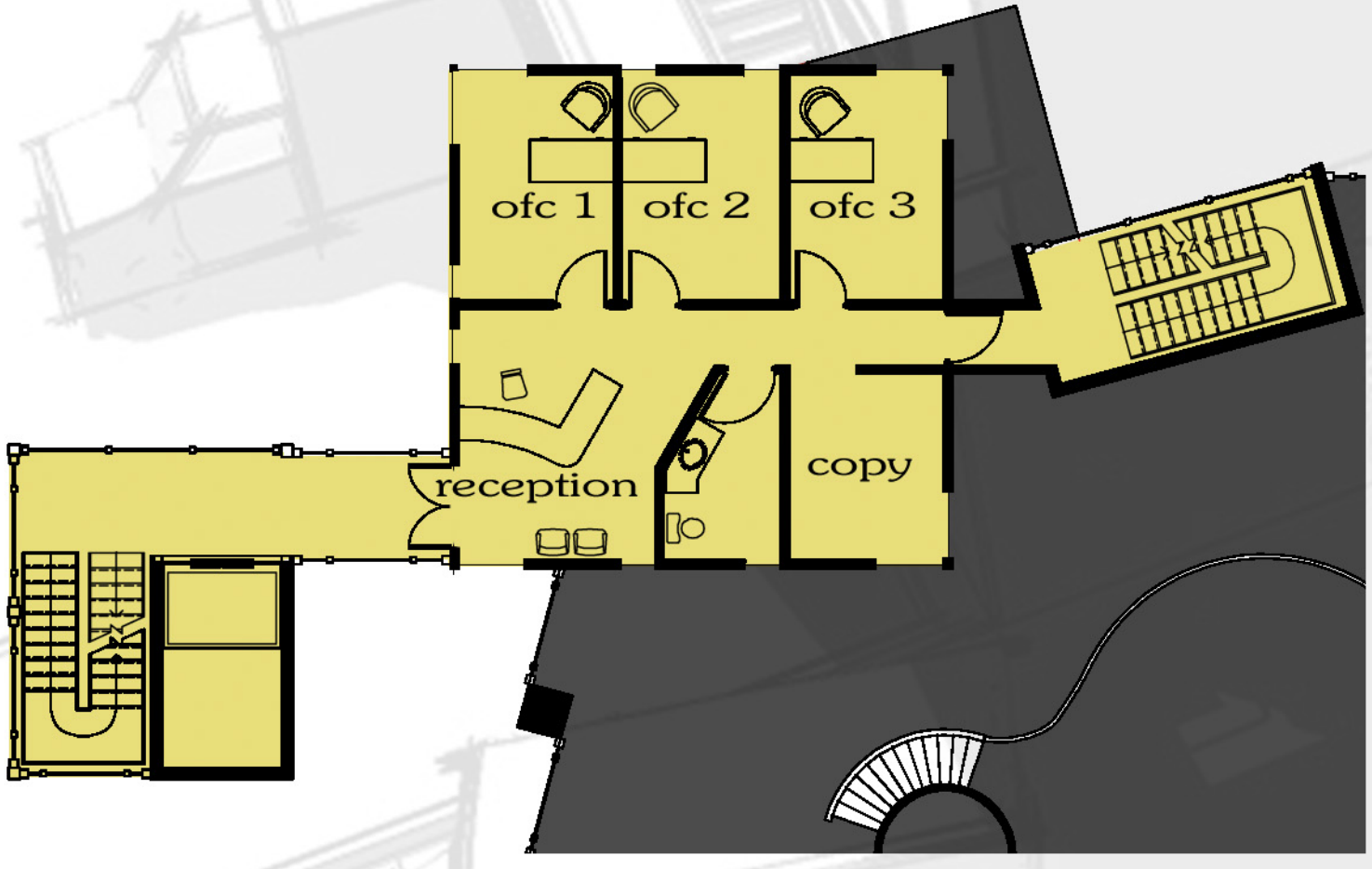
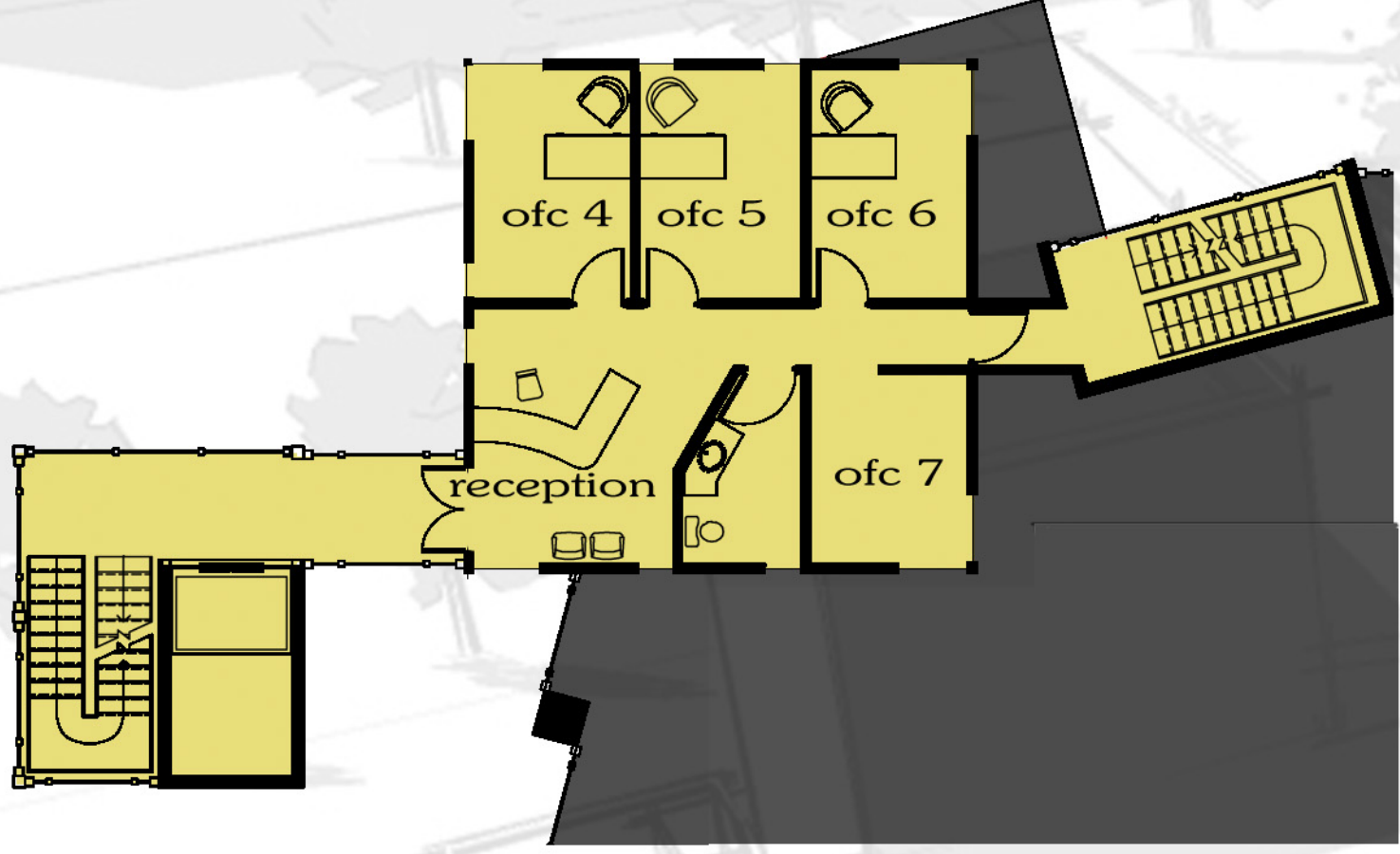
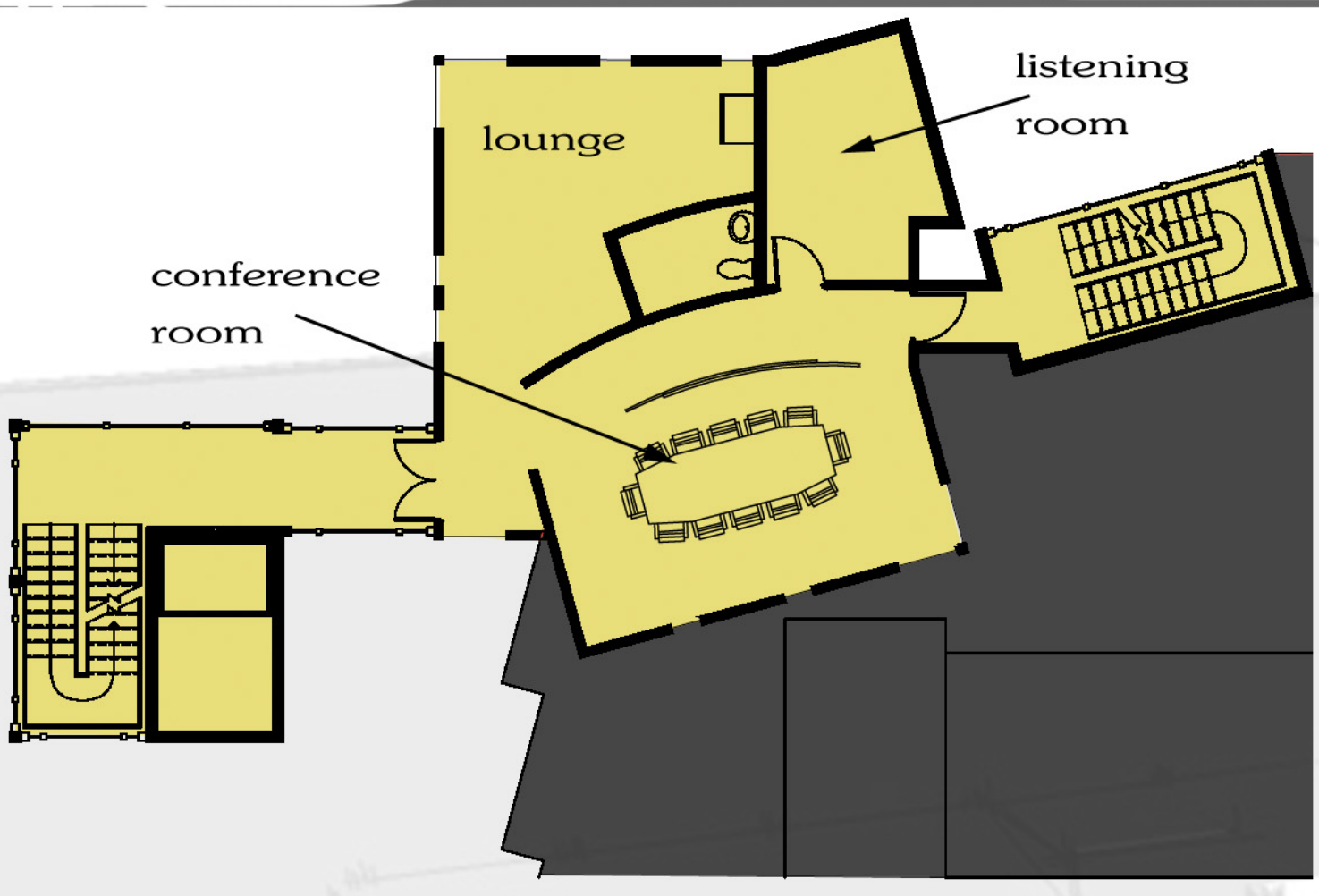
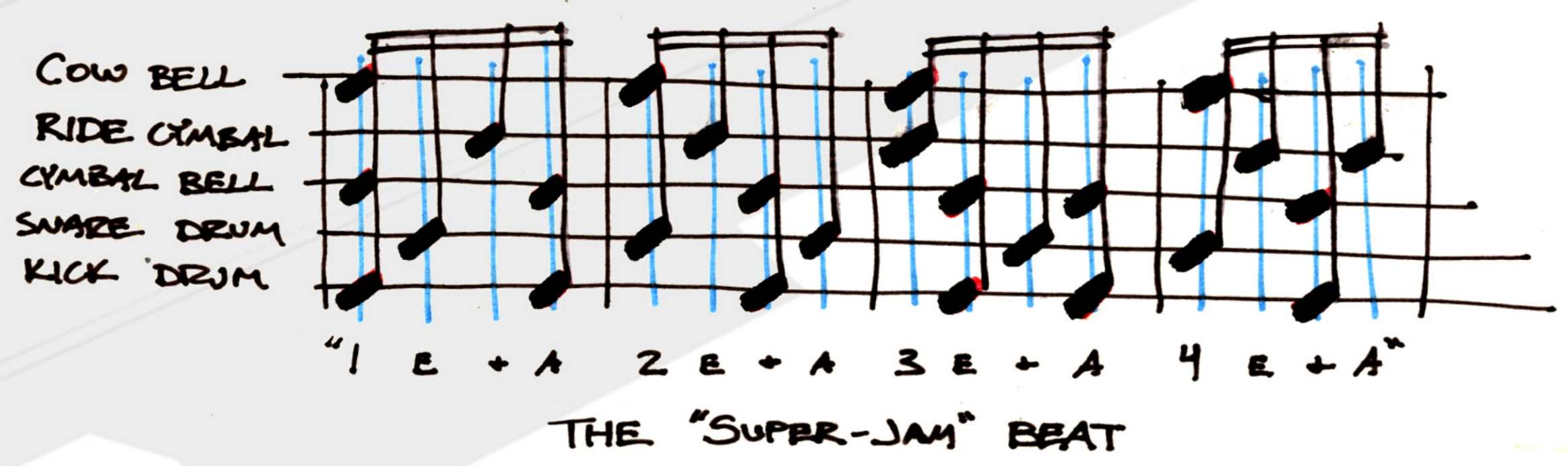
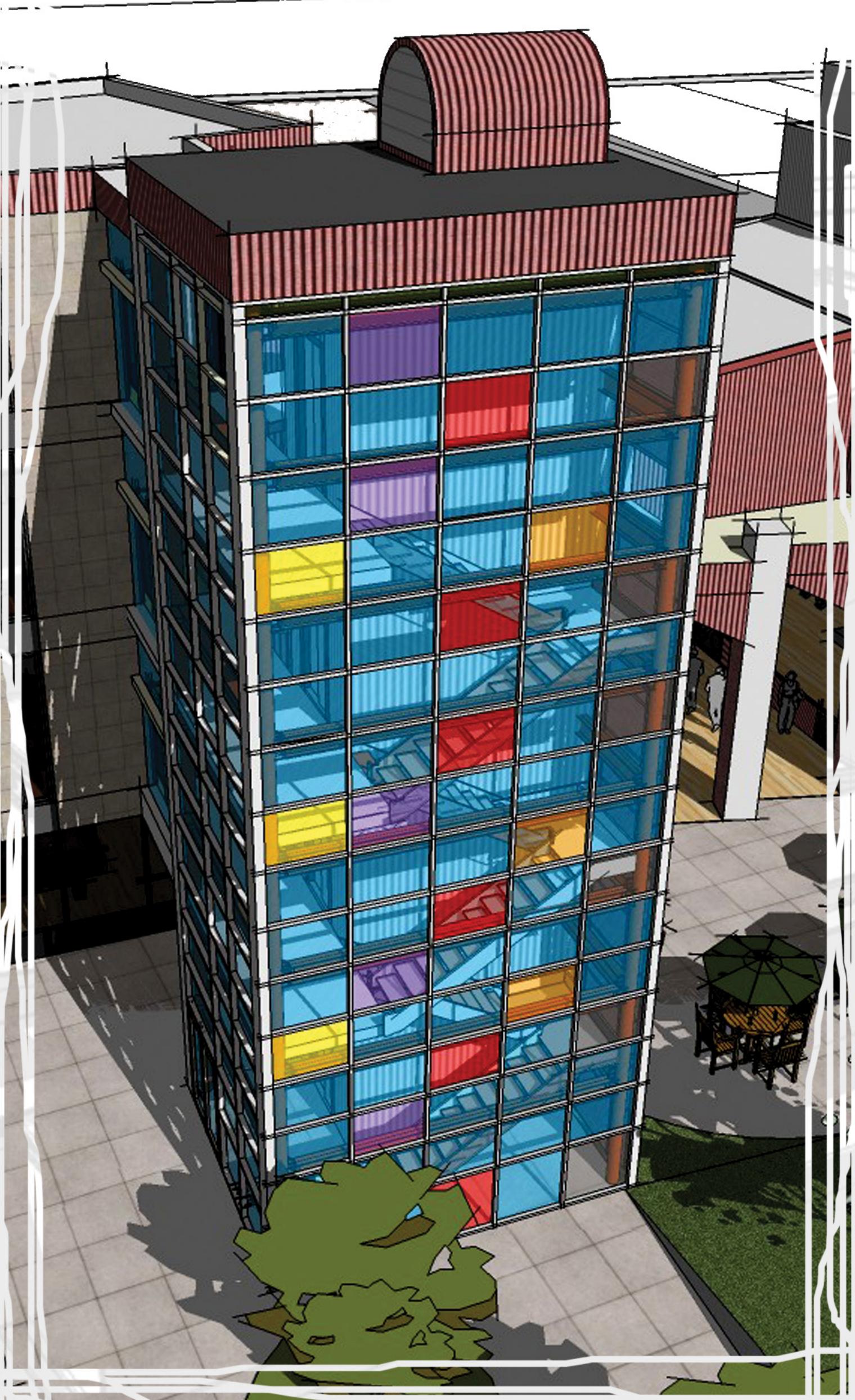


wall section

some very specialized systems need to be in place in order to combine a loud space like a bar with a quiet space like a recording studio. This wall section shows how the "room within a room" system is assembled.

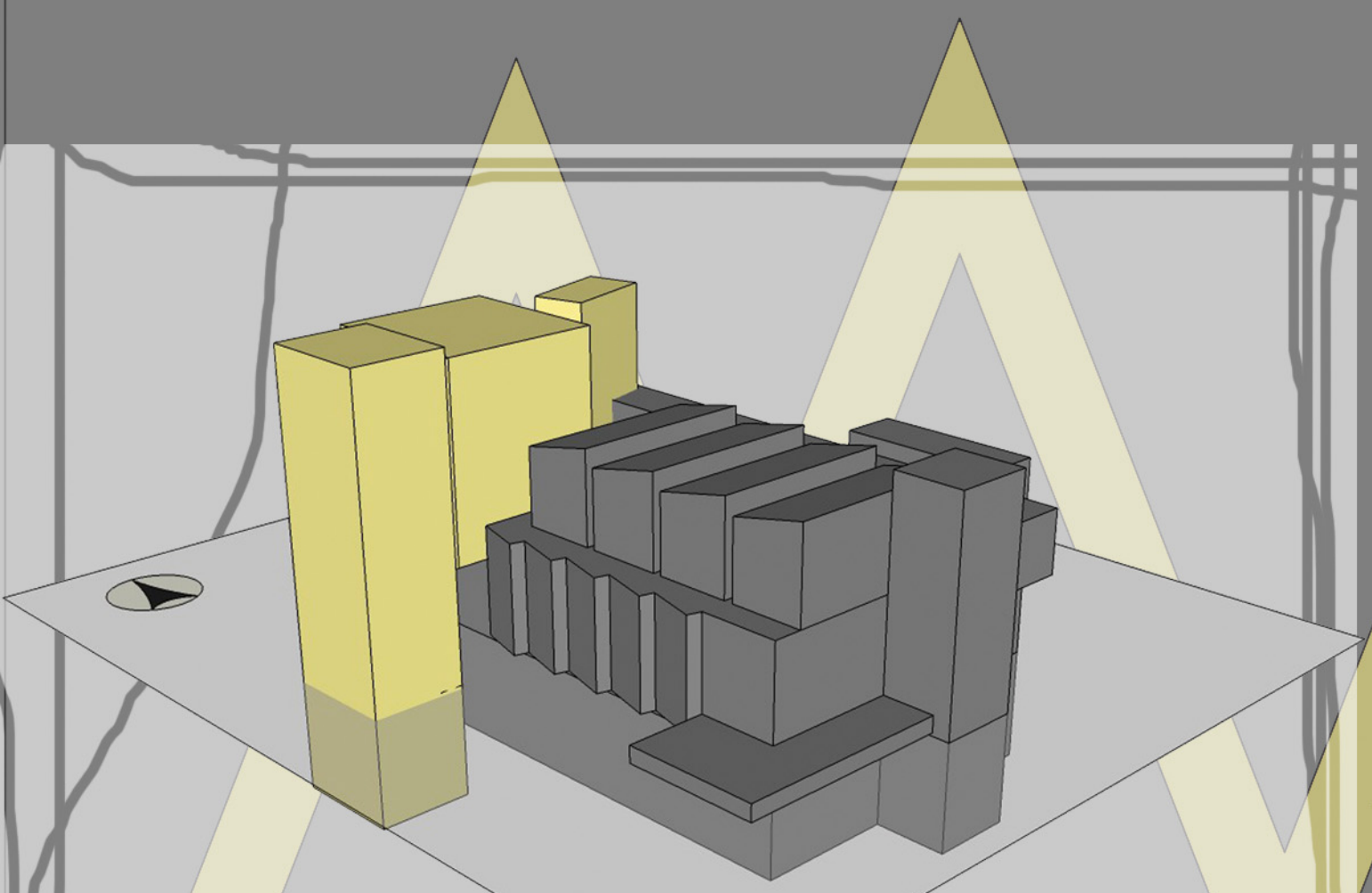
each vertical column in this curtain wall represents one line of a musical staff. each color represents a different percussion instrument. The wall itself is four beats of a drum groove.



# dissonance:

A combination of tones contextually considered to suggest unrelieved tension and require resolution.

deviation from the expected pattern of form leads to dissonance in architecture.



office "cube"

