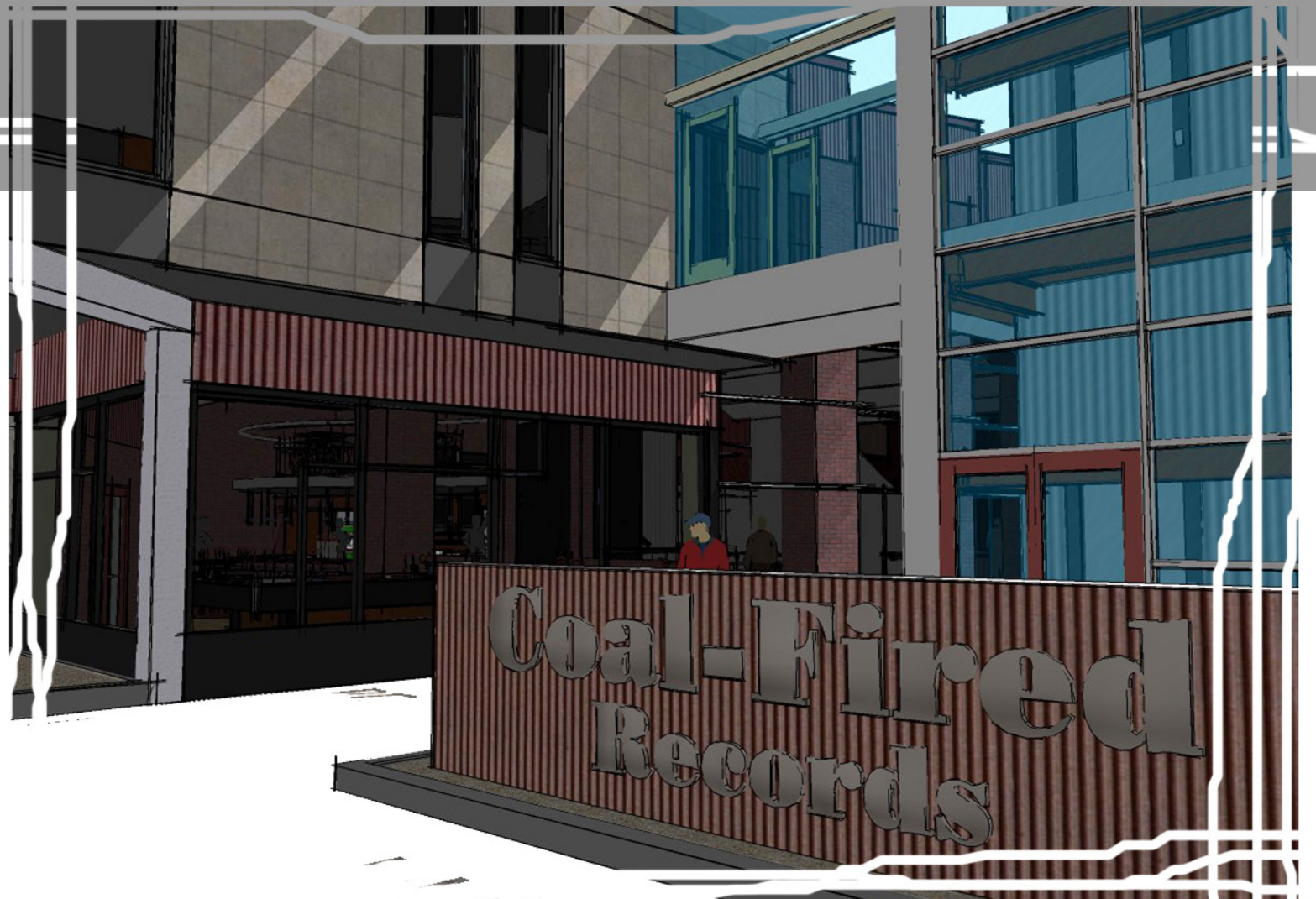
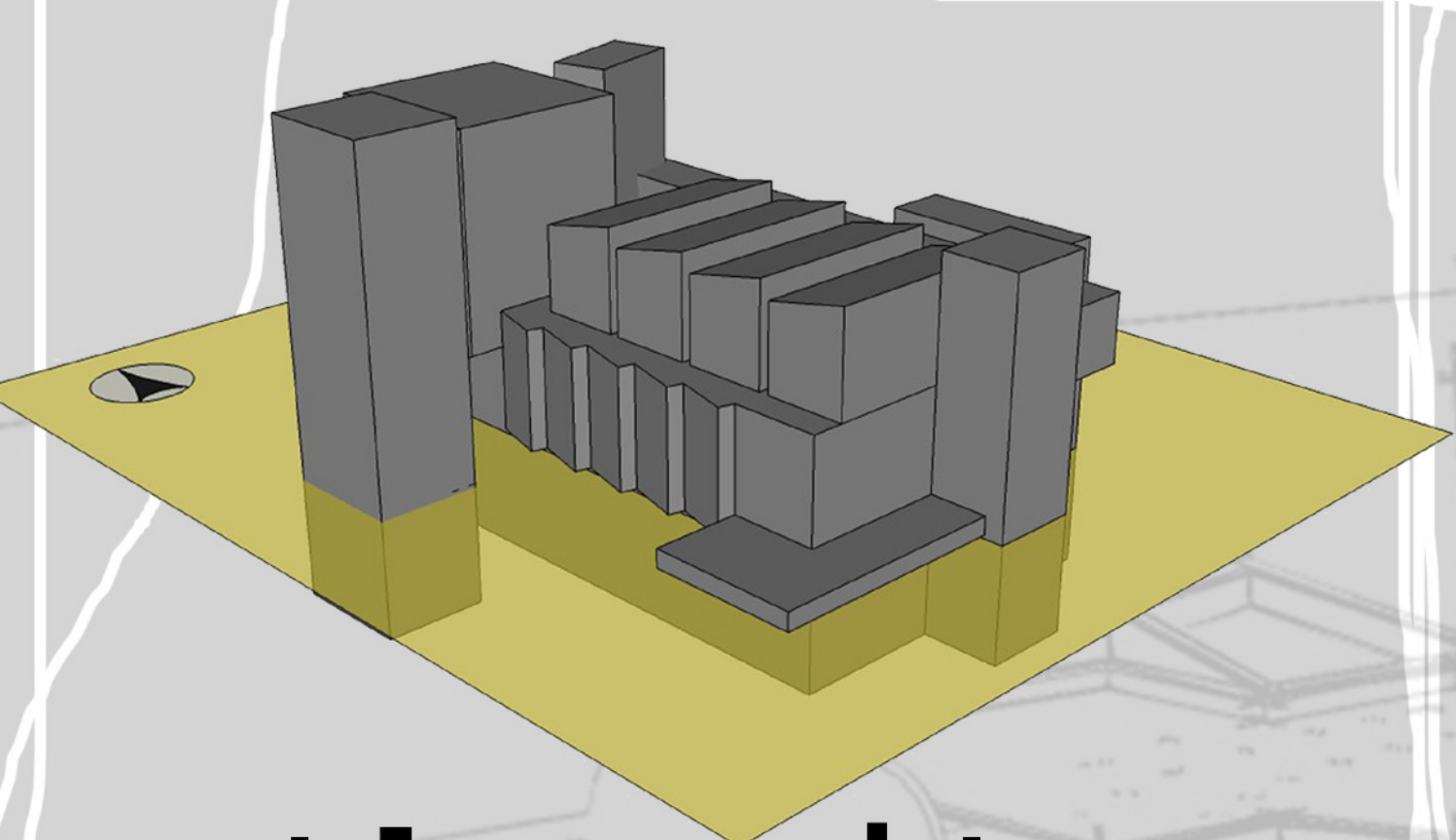




site plan

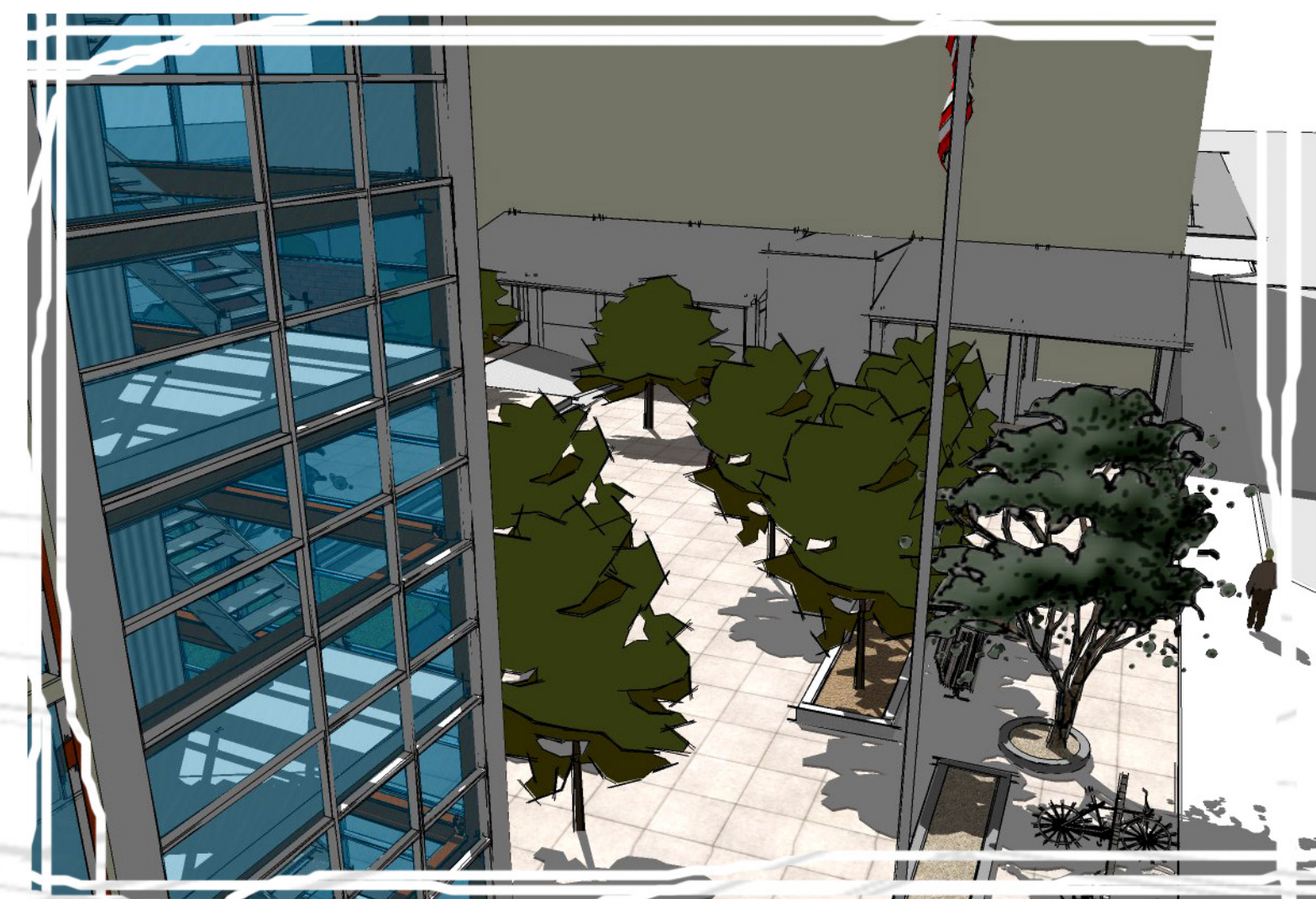


office entry

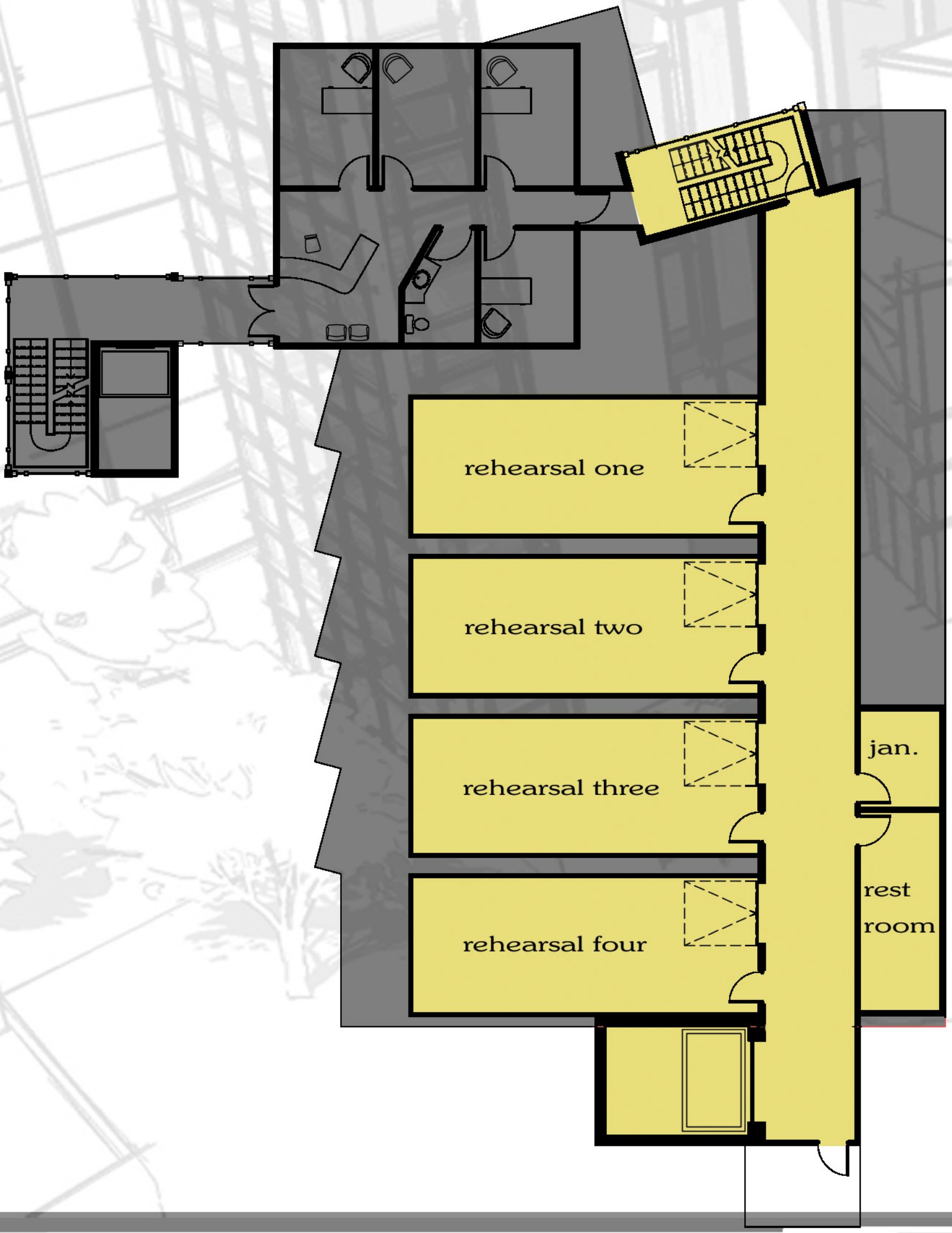


the site

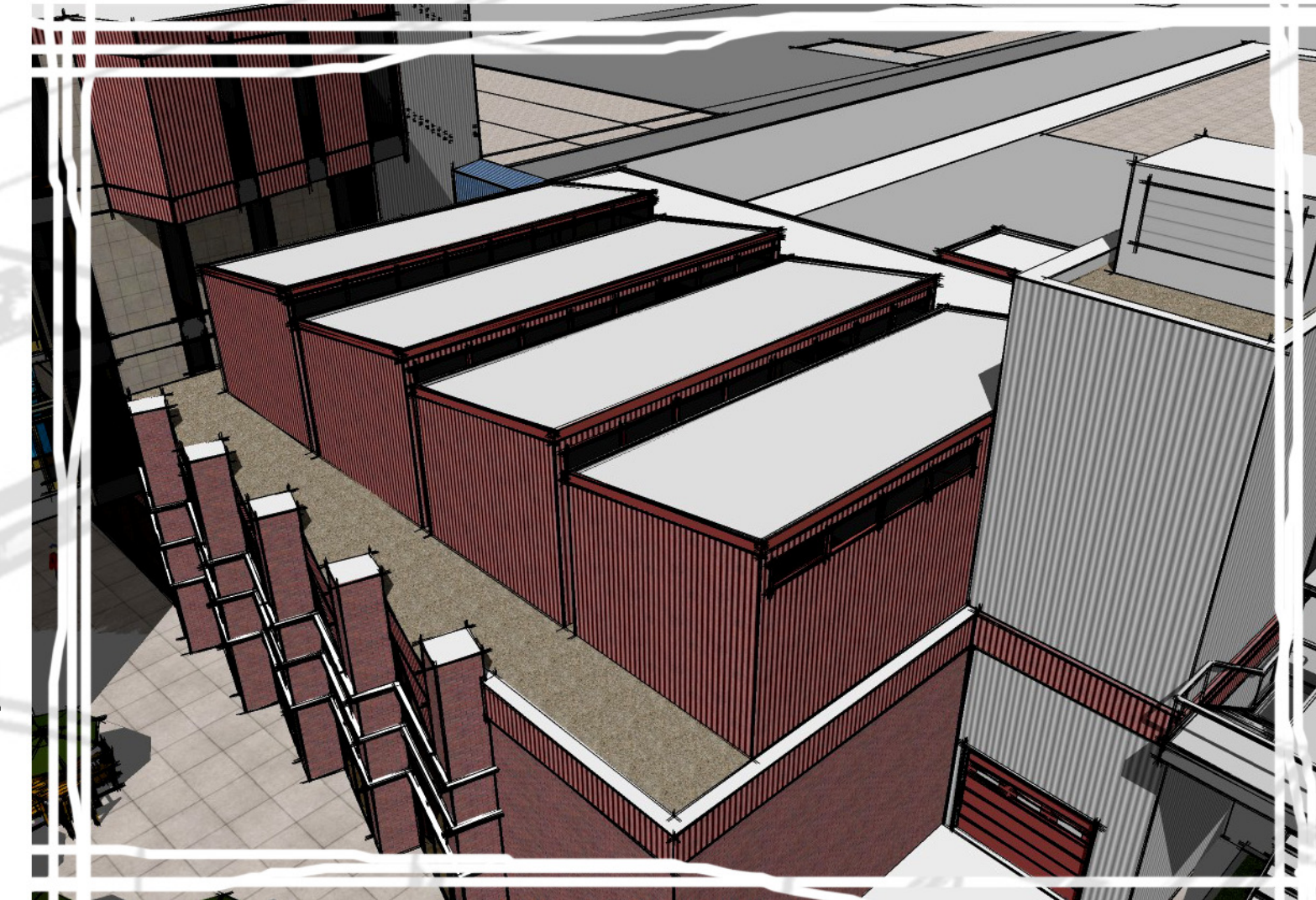
The site is east of NDSU's downtown campus. This design will add to and share the existing plaza which could be used for outdoor shows, or lounge seating.



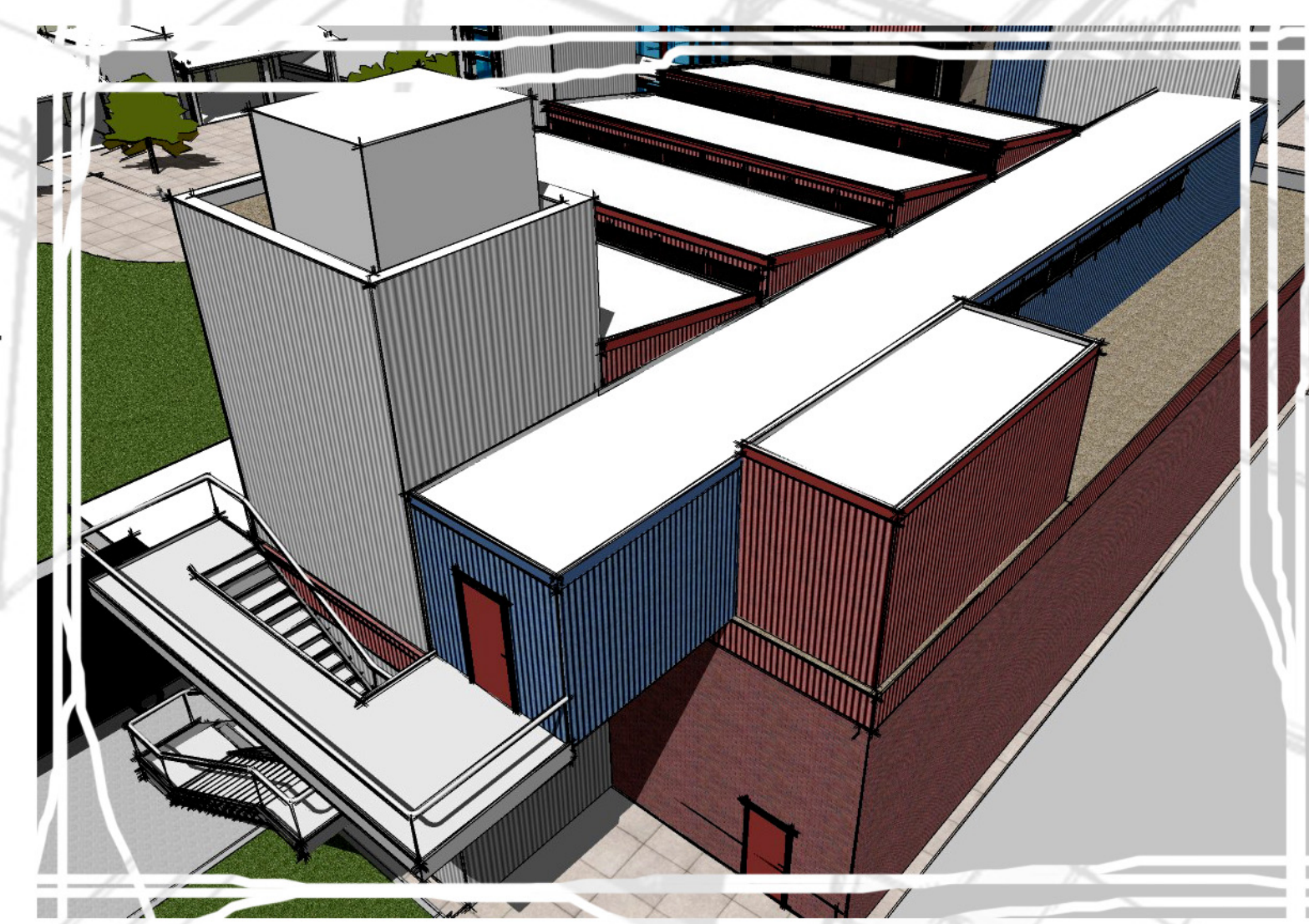
view from office lounge



The rehearsal rooms are designed to allow four bands to practice simultaneously without interfering with each other. This is accomplished by separating them from each other physically, and with materials.



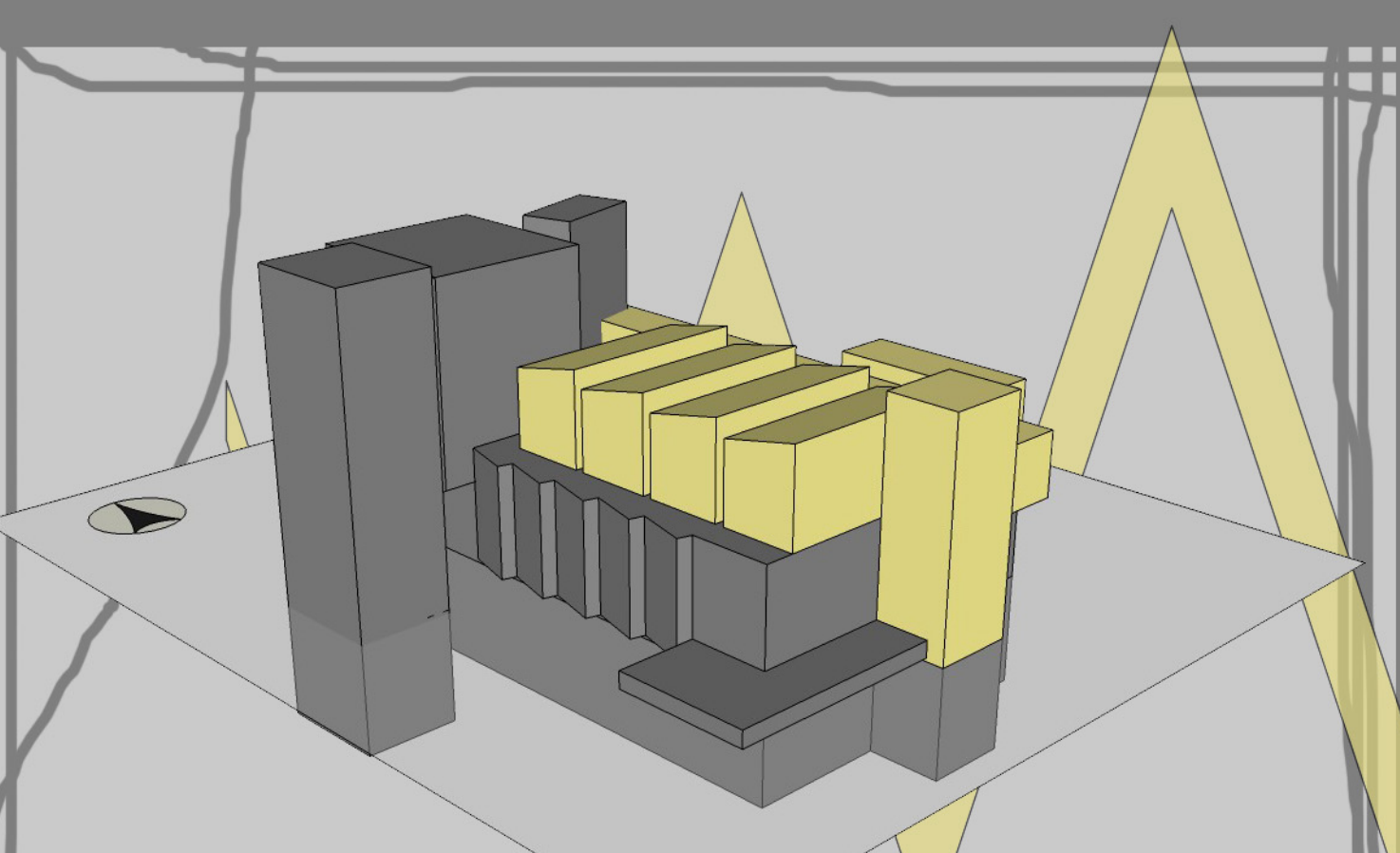
rehearsal rooms



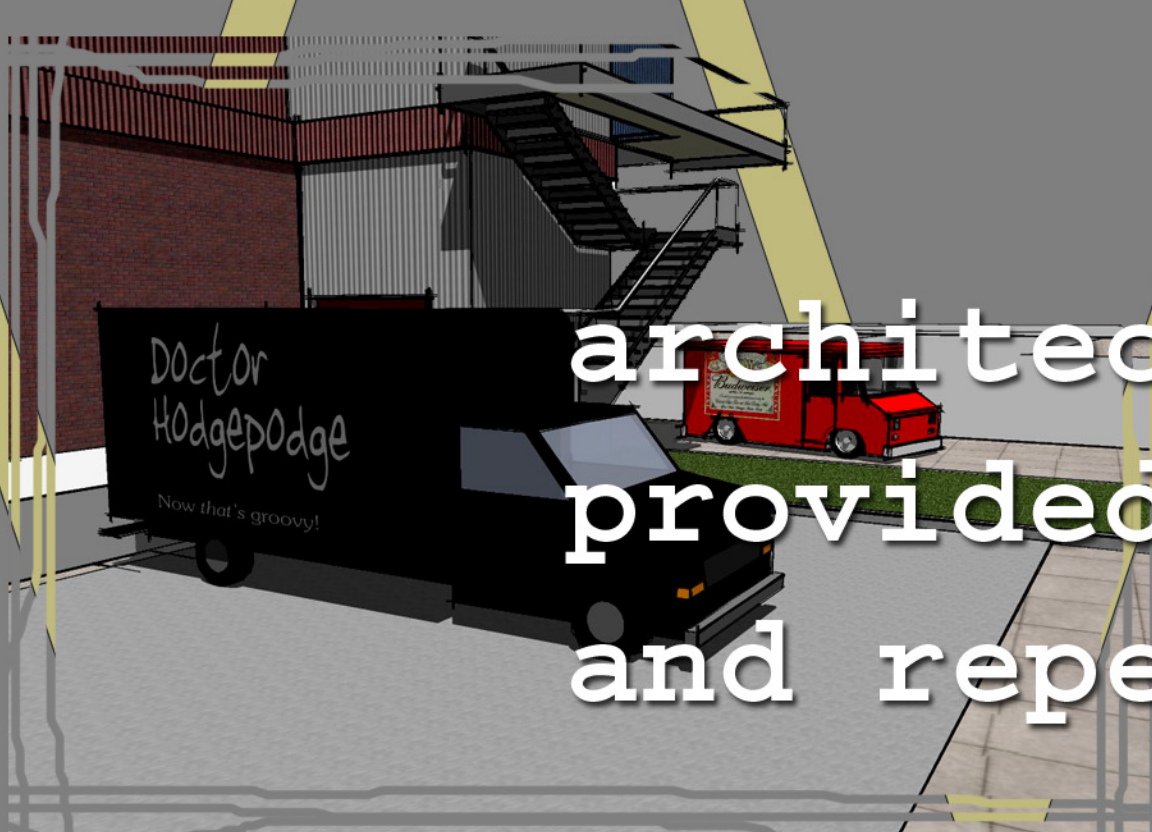
circulation

dynamics:

of or relating to variation of intensity, as in musical sound



rehearsal



architectural dynamics are provided with the use of angles and repetition to imply motion

