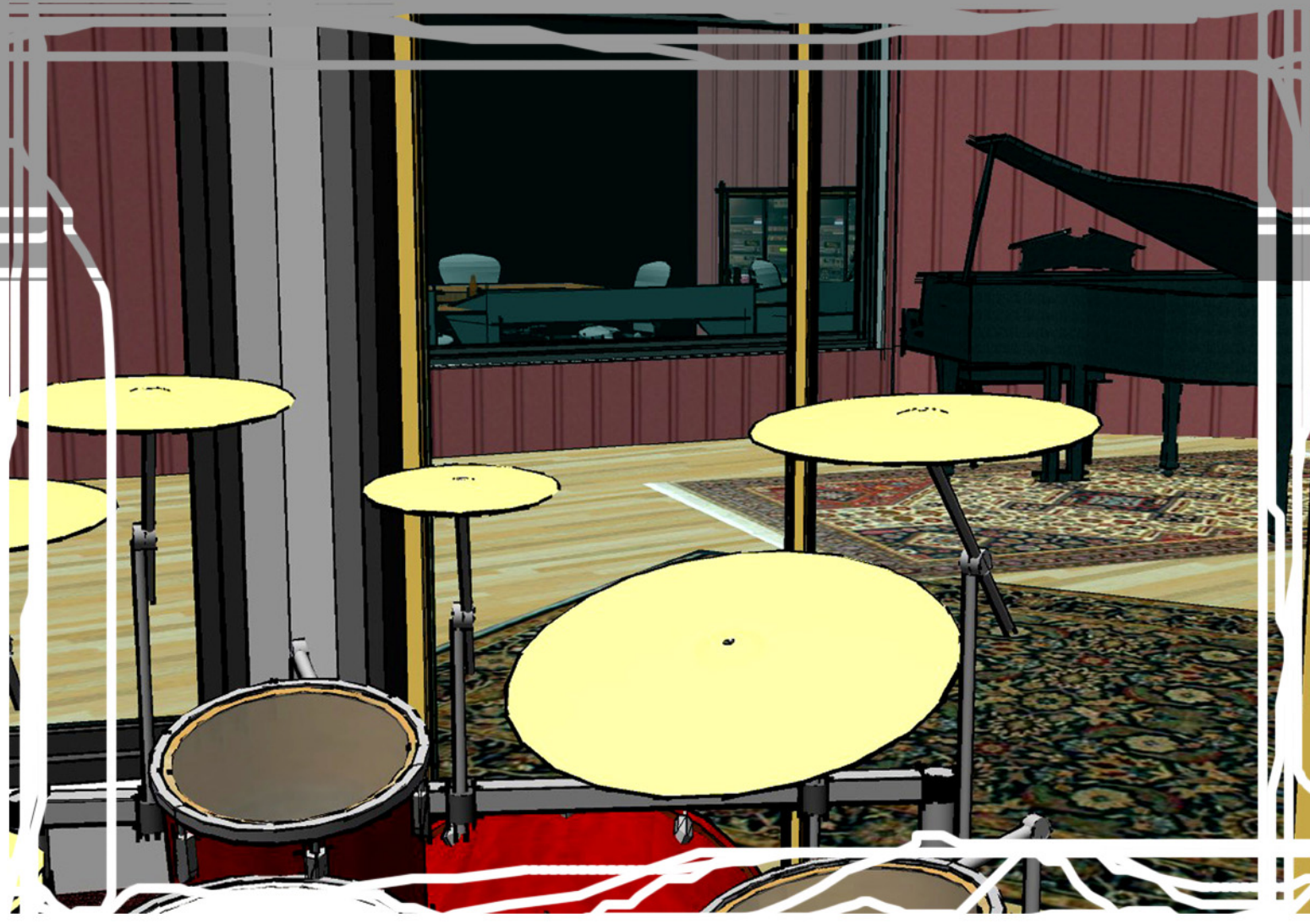
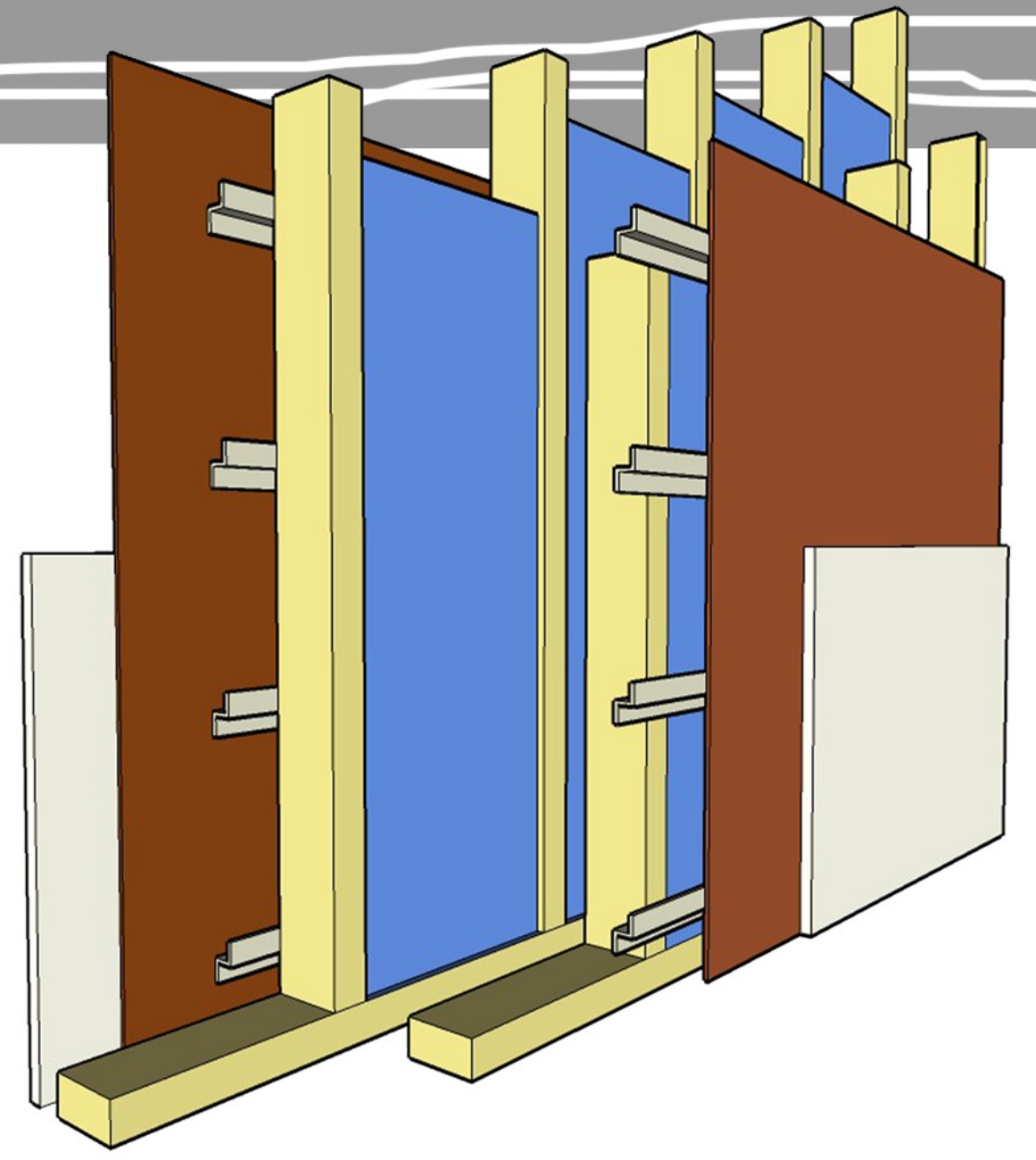


As you can see in the plan, recording studio design is a very complicated field. Every wall in the live room must be at a multiple of 12 degrees from adjacent walls. This is required to cut down on the reverberation to provide the 'deadest' sound possible. The control room's design is similar, but this room must be symmetrical.



from drum booth



Detail showing the double wall construction used in every interior wall in the recording studio. This design nearly eliminates sound transmission, and provides an airspace to decouple each space from the adjacent spaces.



view from control room

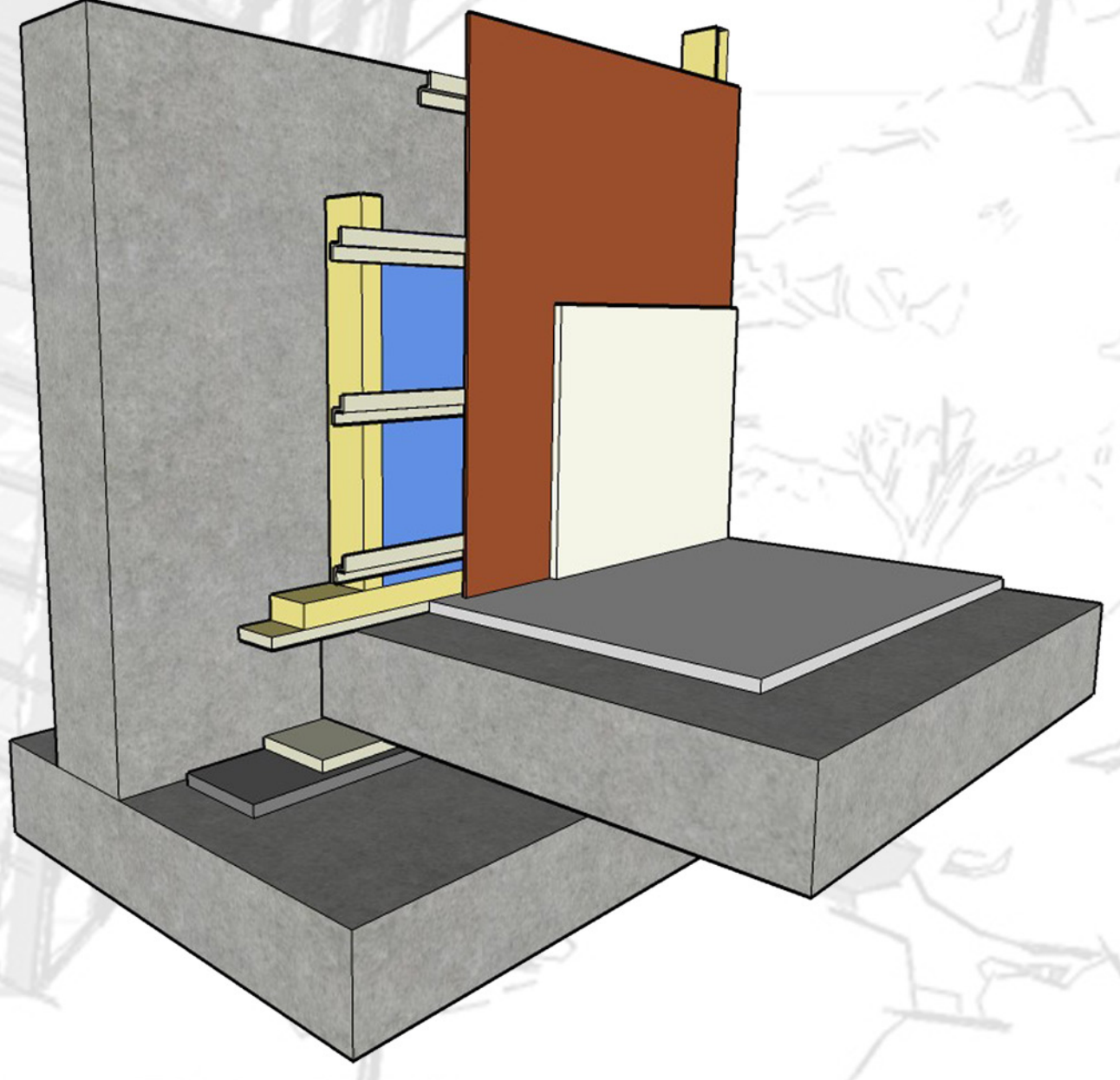


view of control room

Detail showing exterior wall construction for the recording studio. The entire studio is isolated from the foundation creating a "room within a room" situation.



view from live room



harmony:

a pleasing combination of elements in a whole

the studio

contrasting similar forms, dimensions, or themes provides architectural harmony.

