

**A HISTORIC AMERICAN LANDSCAPE SURVEY FOR THE NDSU CAMPUS |
TRACING THE EARLY PLANNING IDEAS OF MORELL & NICHOLS**

NDSU NORTH DAKOTA
STATE UNIVERSITY

Dr. Anna-Maria Visilia, Associate Professor, NDSU

Dominic Fischer, Associate Professor | Chair of Landscape Architecture, NDSU

STUDENT FOCUSED • LAND GRANT • RESEARCH UNIVERSITY



**“FOR THE LAND AND ITS PEOPLE”
SINCE 1890**

STUDENT FOCUSED • LAND GRANT • RESEARCH UNIVERSITY • **NDSU**

OVERVIEW



Introduction to Morell & Nichol's Early Planning Ideas, Campus Plans, and the profession of Landscape Architecture



A Historical Overview of the NDSU landscape with an emphasis on the implementation of Morell & Nichols initial design plan in 1910, and the landscape plans that preceded and followed it.



Significance + Evaluation: Tracing the Early Ideas of Morell & Nichol's on the Development of NDSU Campus + new knowledge of their predecessors.

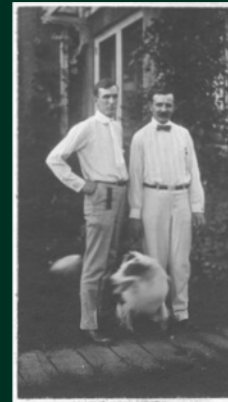


Conclusions: significance, limitations, next steps.

RESEARCH OBJECTIVES

The aim of this study is twofold:

- a) to shed light and expand the discipline's understanding of the Morell & Nichols canon of work in North Dakota and Minnesota with an emphasis on the early years of their planning concepts; and
- b) to study the history and nature of campus/urban/rural development in North Dakota through the lens of landscape architecture.



We examine what are the landscape design concepts and components embedded in the making of the NDSU image as an historic institutional environment.

✓ How visual pleasure and functionalism are addressed in the original landscape master plan by Morrel & Nichols?

✓ Can it be considered a valuable outdoor laboratory for botany and horticulture?

Initial questions

- Answering these questions can direct us to identify, record, and narrate how the landscape setting of the NDSU campus institutes a remarkable Historic American Landscape.

Is there a pedagogical emphasis on plants and ecology?

RESEARCH METHODOLOGY

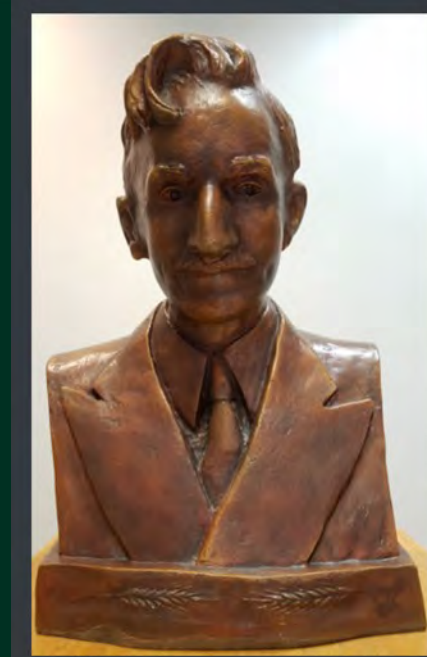
This historical study follows the Historic American Landscape Survey (HALS) format to structure it: Site History, Existing Conditions, Analysis, Significance and Evaluation, Measured Drawings and Recording.



**NDSU Institute for Regional
Studies Archives**

RESEARCH RESULTS

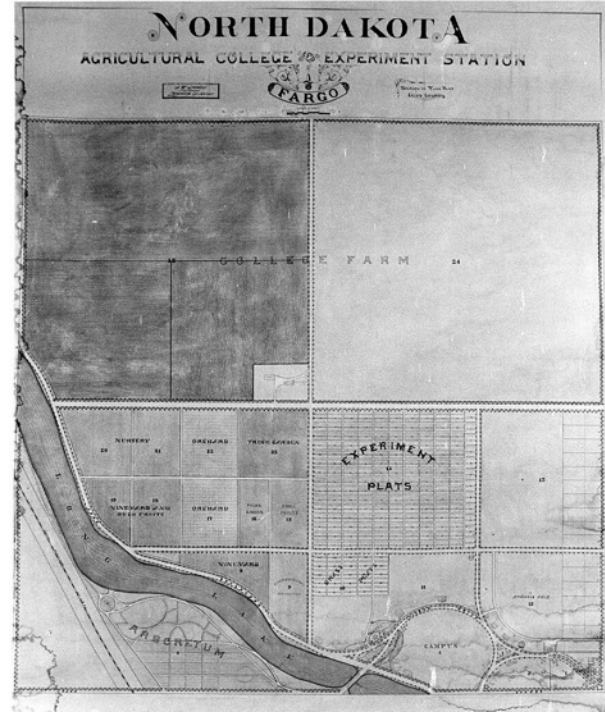
- The current NDSU campus is more significant to American Landscape Architecture than we expected.
- From its inception as the NDAC, the campus was guided by the work of Landscape experts.
- One of those experts was C. B. Waldron, one of the first faculty three faculty members.
- Other links to the profession on a regional and national scale can be shown by tracing plan drawings and the careers of the people who created them.



C.B. Waldron

Professor Clare Bailey Waldron was a prolific “landscape gardner” and in 1934 considered “in charge of Landscape Architecture and Forestry at the NDAC(NDSU)” Bismarck Tribune

THE START OF THE NDSU CAMPUS IN 1890 IS THE START OF NORTH DAKOTA LANDSCAPE ARCHITECTURE.



STUDENT FOCUSED • LAND GRANT • RESEARCH UNIVERSITY **NDSU**

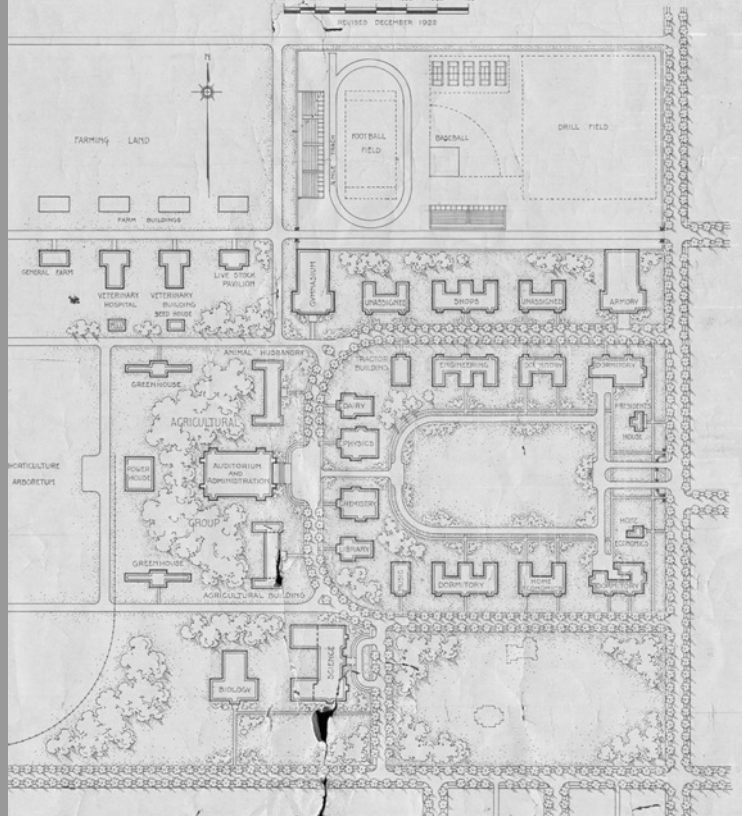
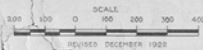
NORTH DAKOTA AGRICULTURAL COLLEGE

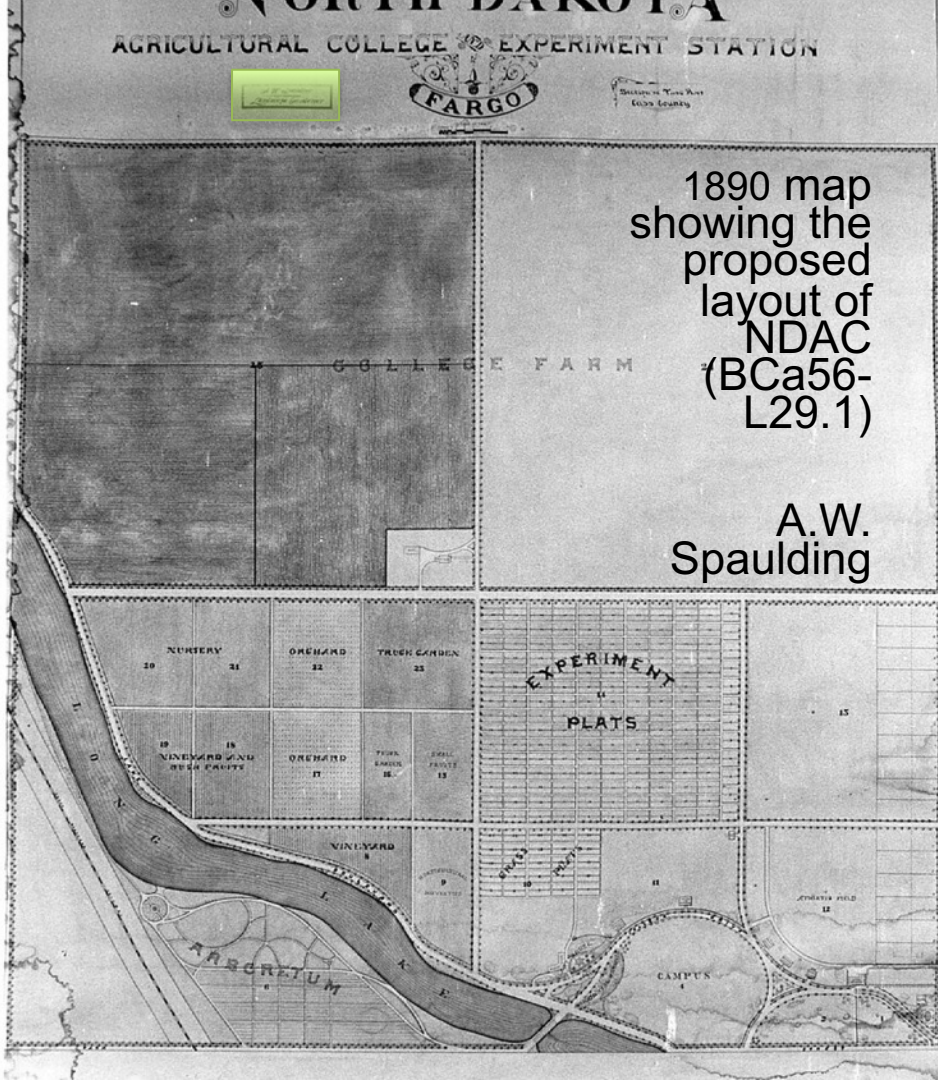
AGRICULTURAL COLLEGE - NORTH DAKOTA

~ PLAN FOR FUTURE DEVELOPMENT OF BUILDINGS & GROUNDS ~

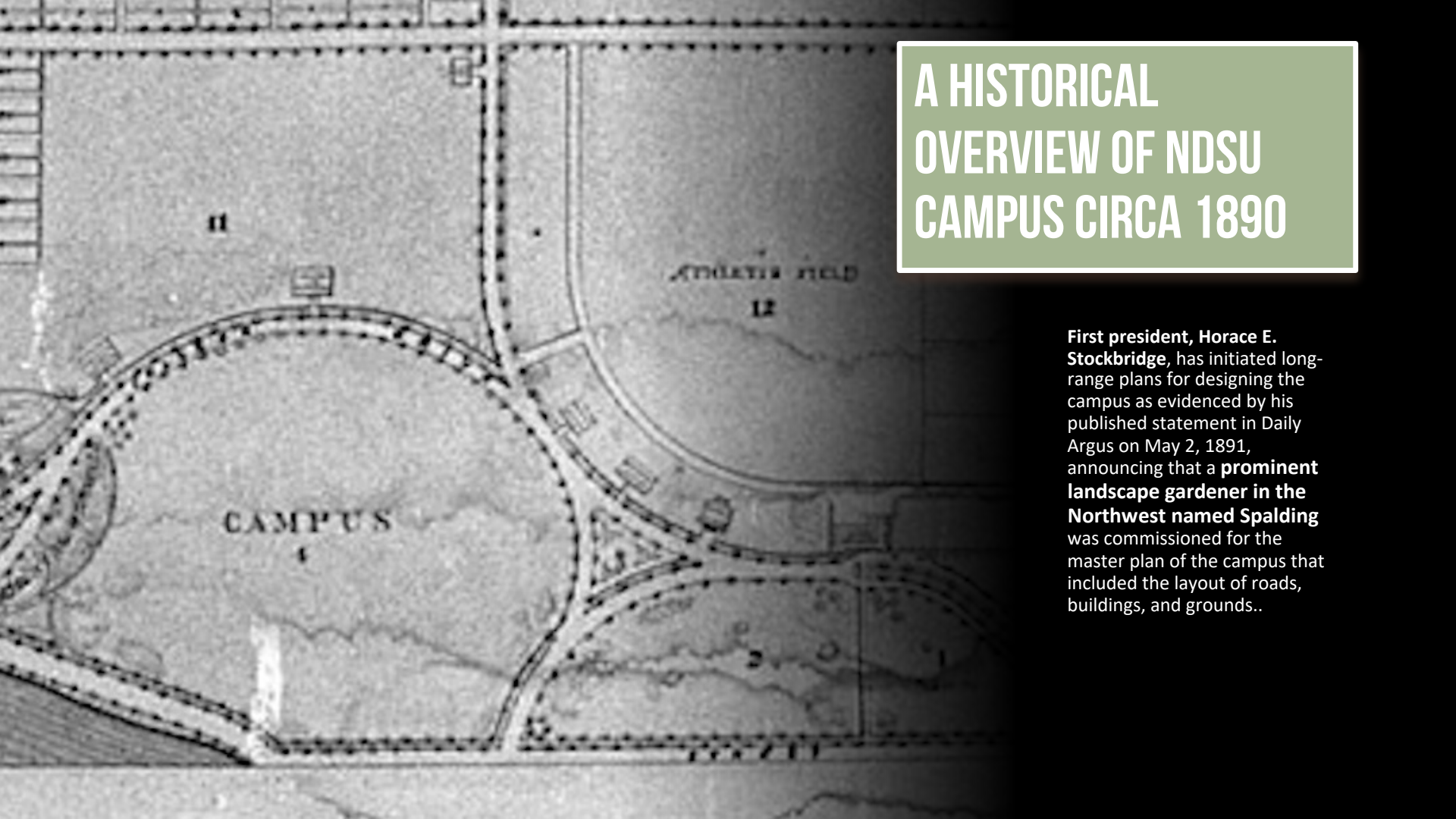
MORELL & NICHOLS
LANDSCAPE ARCHITECTS

MINNEAPOLIS, MINNESOTA
MAY & JUNE 1921







A historical map of the North Dakota State University (NDSU) campus from approximately 1890. The map shows a large central area labeled 'CAMPUS' with a small '1' below it. To the right of the campus is 'ATHLETIC FIELD' with a '12' below it. The map features a network of roads, some with dashed lines, and several small rectangular buildings. The overall layout is somewhat irregular, reflecting the early planning stages of the university.

A HISTORICAL OVERVIEW OF NDSU CAMPUS CIRCA 1890

First president, **Horace E. Stockbridge**, has initiated long-range plans for designing the campus as evidenced by his published statement in Daily Argus on May 2, 1891, announcing that a **prominent landscape gardener in the Northwest named Spalding** was commissioned for the master plan of the campus that included the layout of roads, buildings, and grounds..

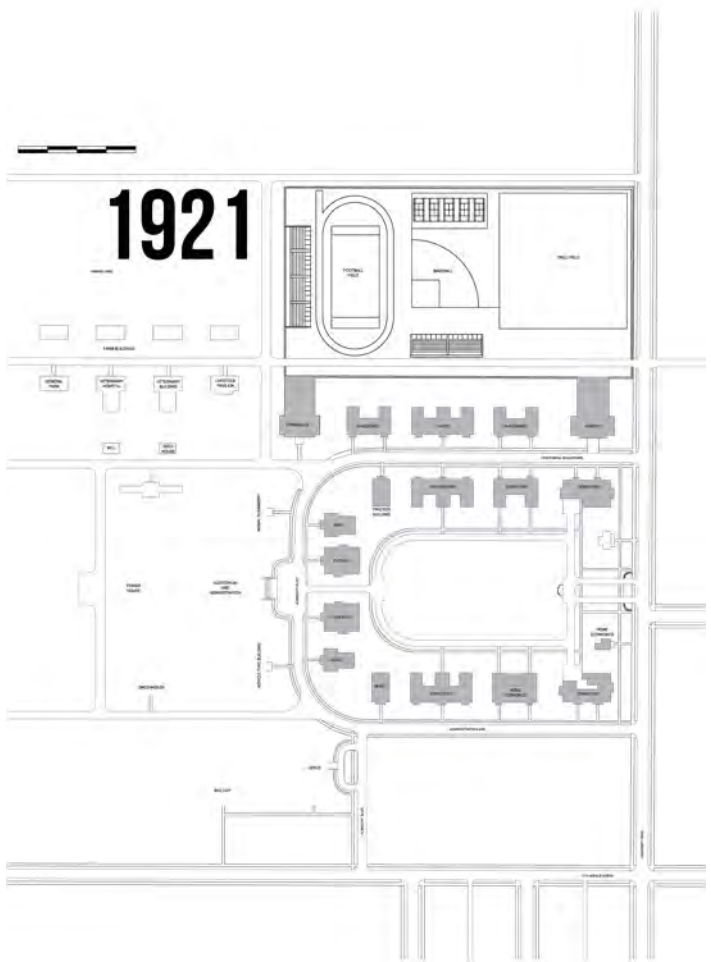
2022



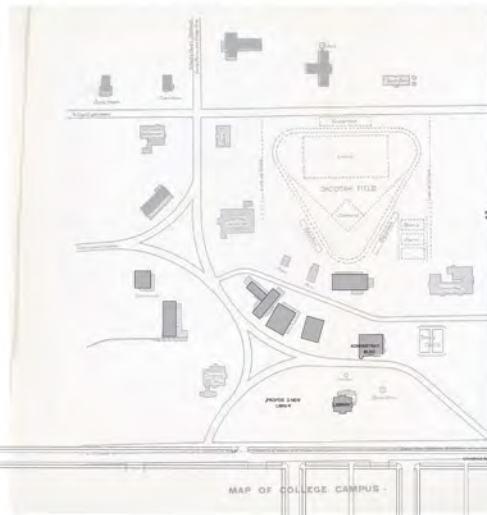
1948



1921



—
1919



—
1910



— 1910
MAP OF COLLEGE CAMPUS

1890



A HISTORICAL OVERVIEW OF NDSU CAMPUS



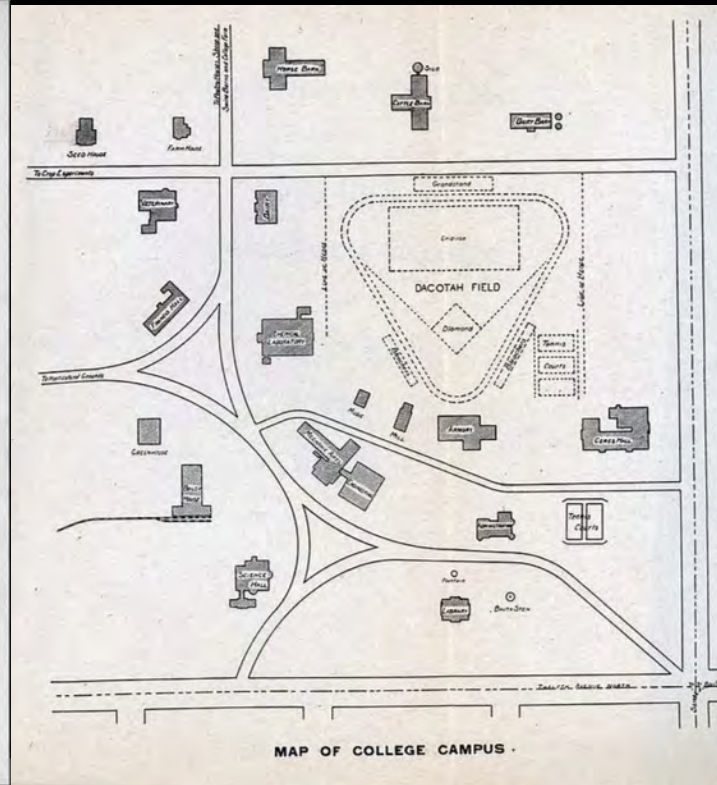
1894 Old Main



Dormitory 1894.



1910 NDAC Campus Map



1919 NDAC Campus Map

- In 1921, Morell & Nichols, a Minneapolis landscape architecture and site planning firm, was commissioned to develop such a plan.

- The first phase of their plan suggested the relocation of a couple of buildings and the establishment of a completely different system of roadways and circulation patterns to redefine the campus form.



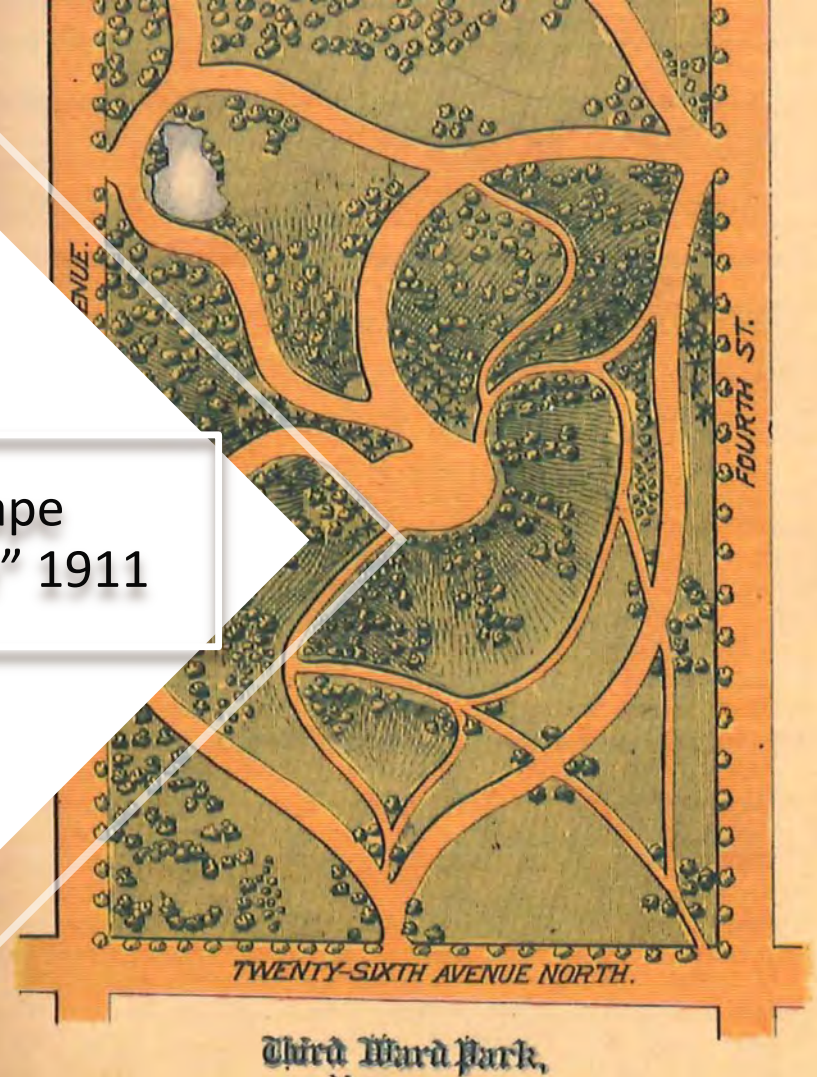


Morell & Nichol's Early Planning Ideas

- Anthony Morell and Arthur Nichols began their partnership in 1909 that came to be one of the first and most prolific landscape architecture practices in Minnesota.



"Landscape
Architecture" 1911



MORELL & NICHOL'S EARLY PLANNING IDEAS

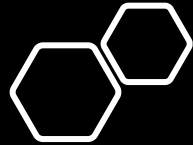


Lakewood Cemetery, Minneapolis, MN - Photo by Barrett Doherty, 2021



- **University of Minnesota - Twin Cities, Minneapolis, MN - Photo by Charles Birnbaum, 2001**





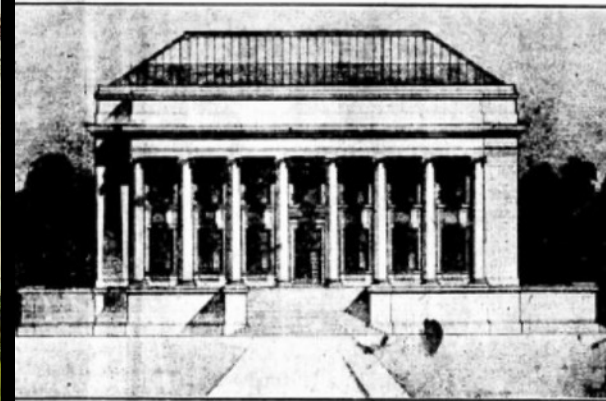
Capitol Mall and Liberty Memorial

- **DESIGNED TO HARMONIZE WITH GENERAL DEVELOPMENT OF CAPITOL GROUNDS.**
- ***“TIE THE CAPITOL GROUNDS AND CITY TOGETHER”***
- **- April 2nd, 1921**

Liberty Memorial Building, Bismarck, N. Dak.



LIBERTY MEMORIAL BUILDING ON STATE CAPITOL GROUNDS TO BE MOST BEAUTIFUL IN NORTH DAKOTA



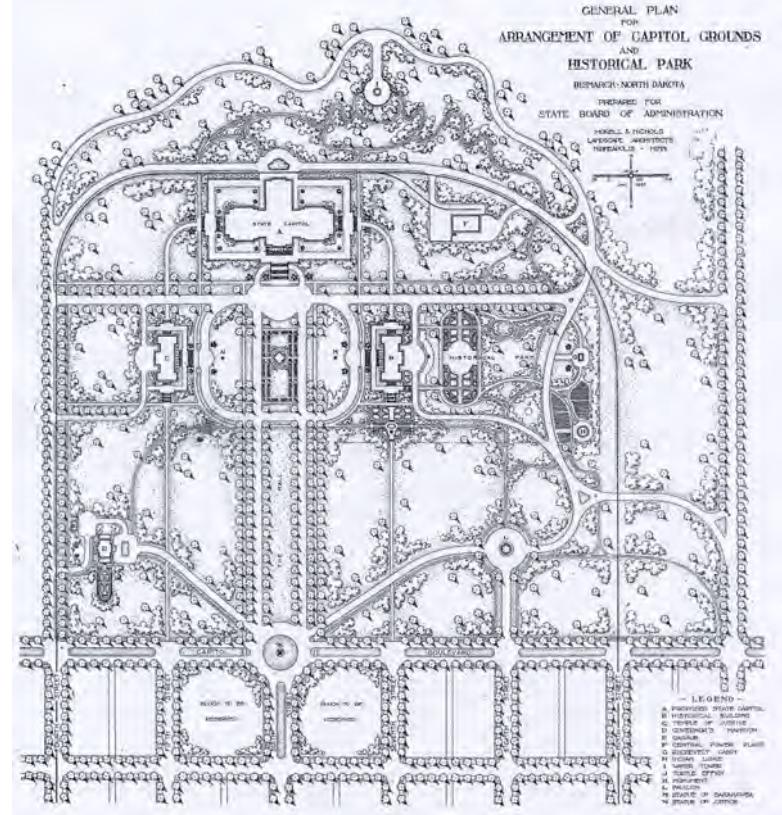
Architect's Drawing of New Memorial Building.

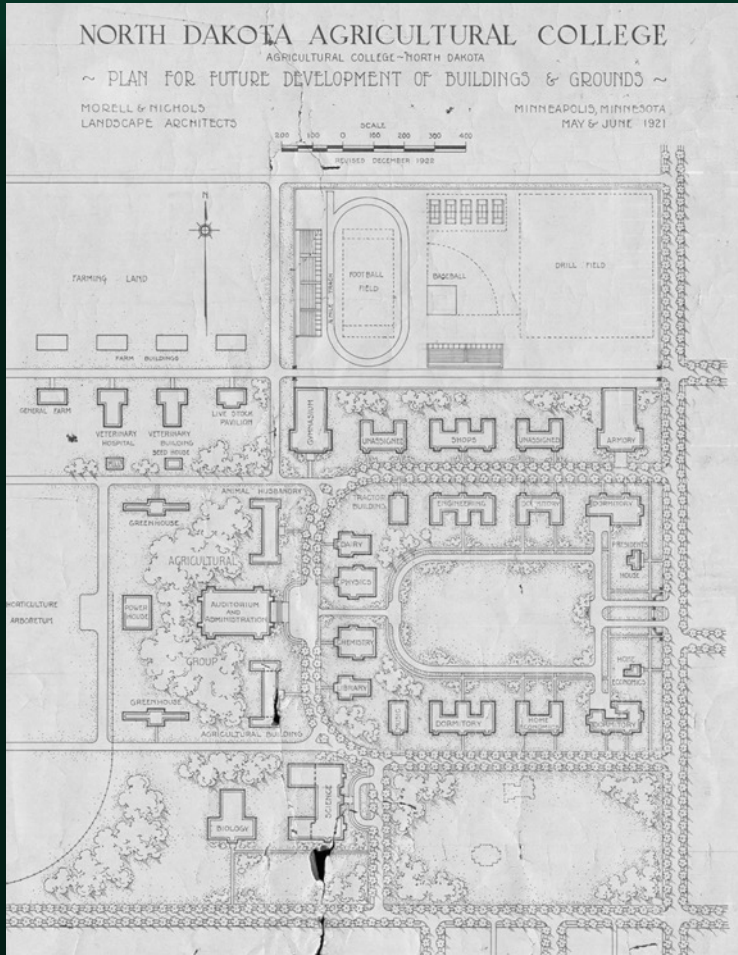
BUILDING OF STRUCTURE IS BEING PUSHED

New Building is Designed to Harmonize with General Development of Capitol Grounds

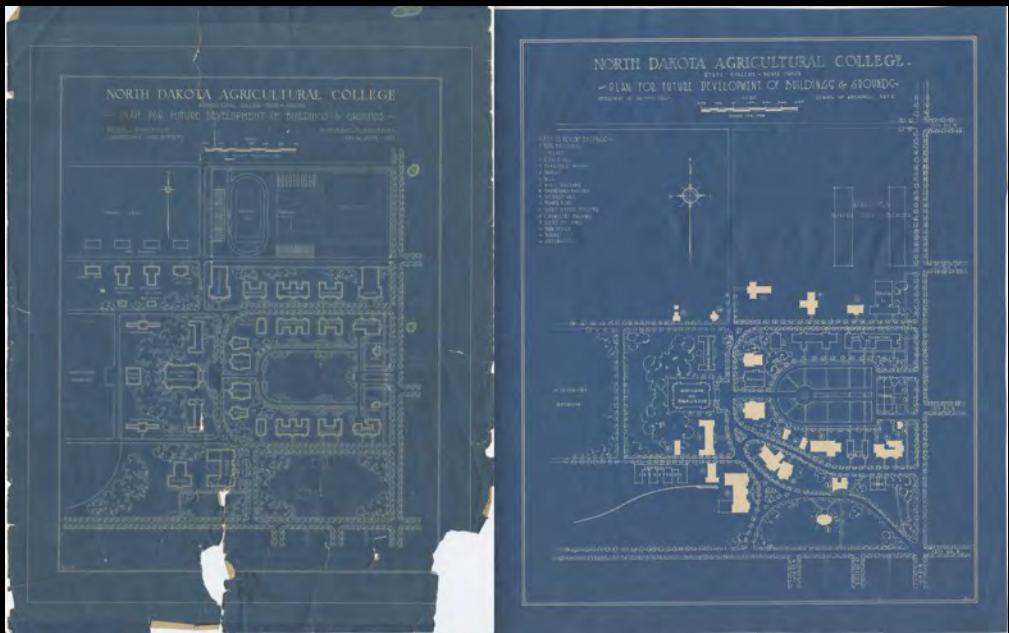
The General Plan for Arrangement of Capitol Grounds and Historical Park

-Morell & Nichols 1920





The development of a comprehensive, integrated park-boulevard system was pivotal.



1921, 1928, and 1948 campus plans

NDAC CAMPUS TO GET LONG RANGE "NEW LOOK"

The arrangement of buildings and grounds for the next quarter century was studied by survey officials recently with an eye to a "new look" for the NDAC campus. The subject's proposed future appearance was prepared by Merrill and Nichols, Minneapolis, the company specializing in campus surveys. The project was authorized by the state board of higher education and has been in preparation for many months, with representatives of the Twin City company visiting the campus on several occasions.

Some features of the program are:

- "A shift northeast of center of the campus activity and traffic flow, with the 12th avenue campus entrance closed and the main campus gate located between 13th and 14th avenues on 13th street north.
- "Removal of several halls.
- "Construction of a new science building along the west grounds, east of Science hall, connecting 12 and 13th avenues.
- "Science hall, now housing the school of pharmacy and depart-

ment of anatomy, was built in 1928. The Music hall was erected two years later. The first section of the engineering laboratories was also built in 1928 with the engineering classroom, main element of the engineering group built in 1937. Dakota hall was erected as the barracks for World War I and now serves as a dormitory.

It has been pointed out that the Merrill-Nichols study is the first such project to consider campus needs during the next half-century, in the light of the present rate of expansion, and in consideration of traffic and parking requirements. One Main, NDAC's oldest building (1892) will remain under its present plan.

"With the addition of the Student Union building and auditorium, the present traffic flow will be along the street running east-west north of the present stadium. Adaptation of the field house will be made, with 20th field stadium and parking plans being further north along 21st street.

The Langwell, former president of NDAC, has pointed out that the construction of the present stadium will permit being placed in sections. It was completed in 1926 as a WPA project, providing seating for 1200 and a sorted quarter-mile track. Planning in its present site was a costly but not tremendous task," Langwell said. Engineers have looked the stadium over and believe it can be served easily and without damage. Much of the present space will be used in a traditional express road, with well-landscaped.



HIGH QUALITY CAKES and COOKIES FOR YOUR COLLEGE PARTIES

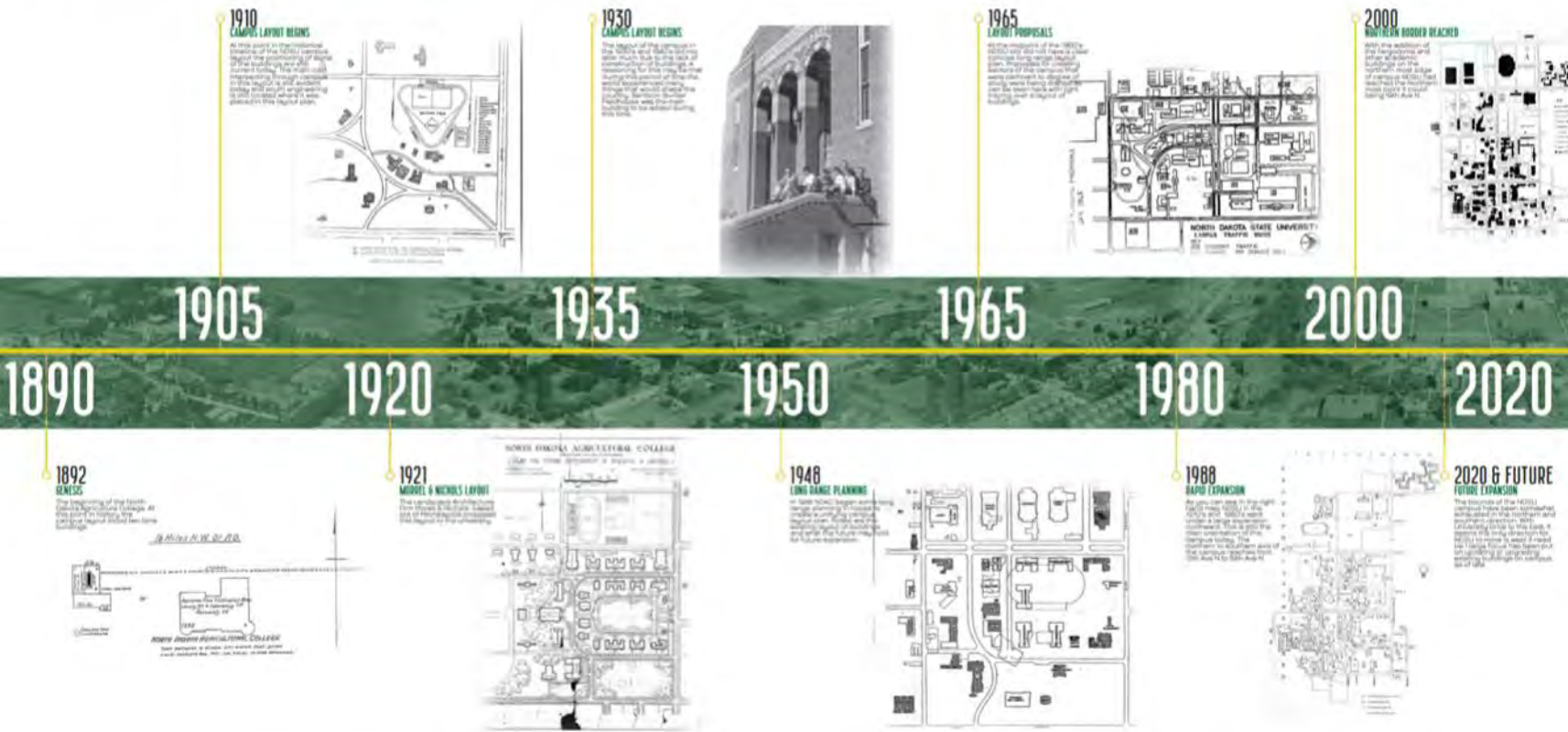
THE DUTCH MAID BAKE SHOP

Phone 4481
15 8th St. South

NORTH DAKOTA STATE UNIVERSITY

CAMPUS LAYOUT TIMELINE | ENTIRE EXPANSION | 1890 - 2020

Building and descriptive information courtesy of North Dakota State University and The NSU Archives



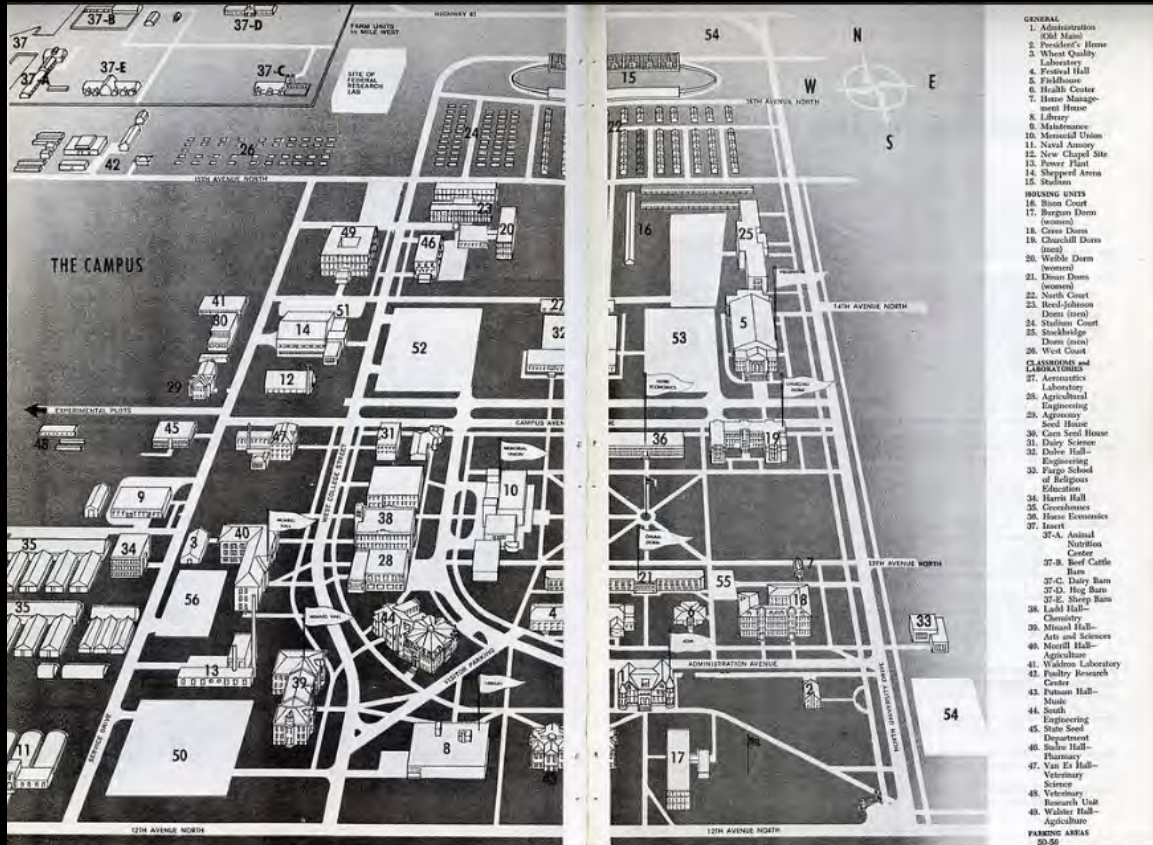
In March of 1947, A.F. Arnason, Commissioner of the North Dakota State Board of Higher Education wrote to J.H. Longwell, President of N.D.A.C,

“On various occasions Board members have talked about the manner in which buildings are located on your campus and personally

I plead guilty to the authorship of a facetious remark to the effect that your layout looks as if the buildings have been dropped more or less at random from a B-29”

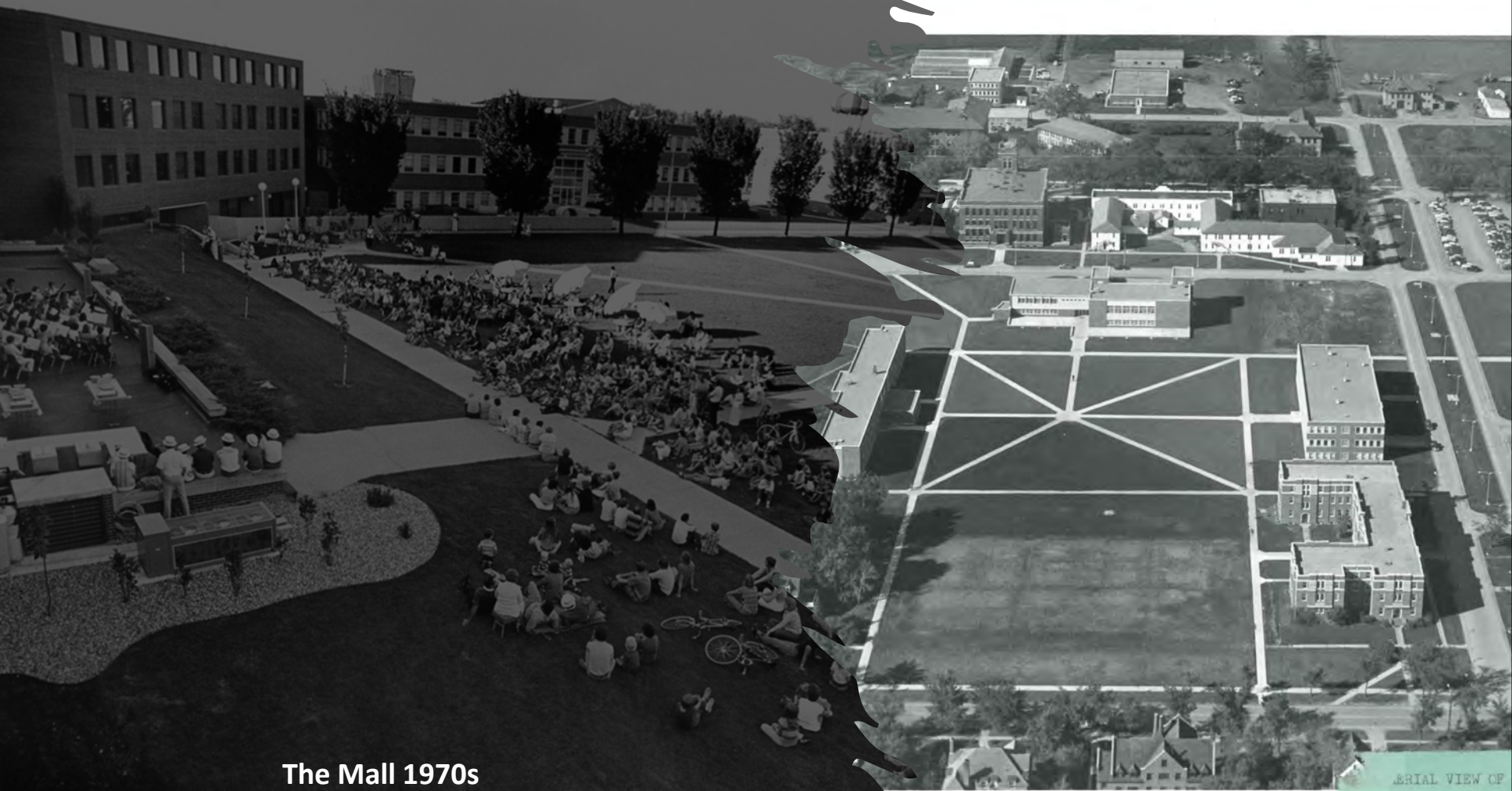
(Foykko, 1980).





Nichols in writing to President Hultz, expressing his *“keen regret over my failure to have made clear the program of planning being recommended with the resultant misunderstanding by your Committee and the Board.”* - 1948

1965 NDSU Campus (Oblique) Map



The Mall 1970s

AERIAL VIEW OF

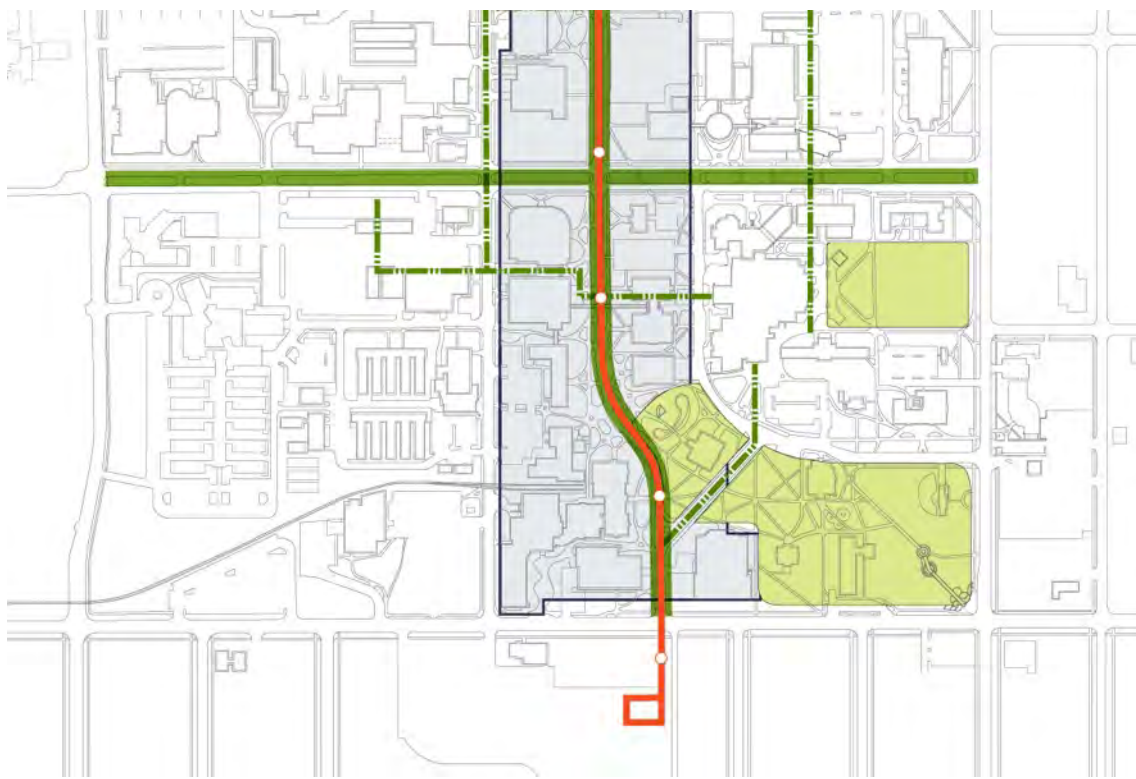
**1980s Aerial
Campus**

**1983
Landscape
Architecture
courses first
instructed by
Professor
Dennis Colliton**





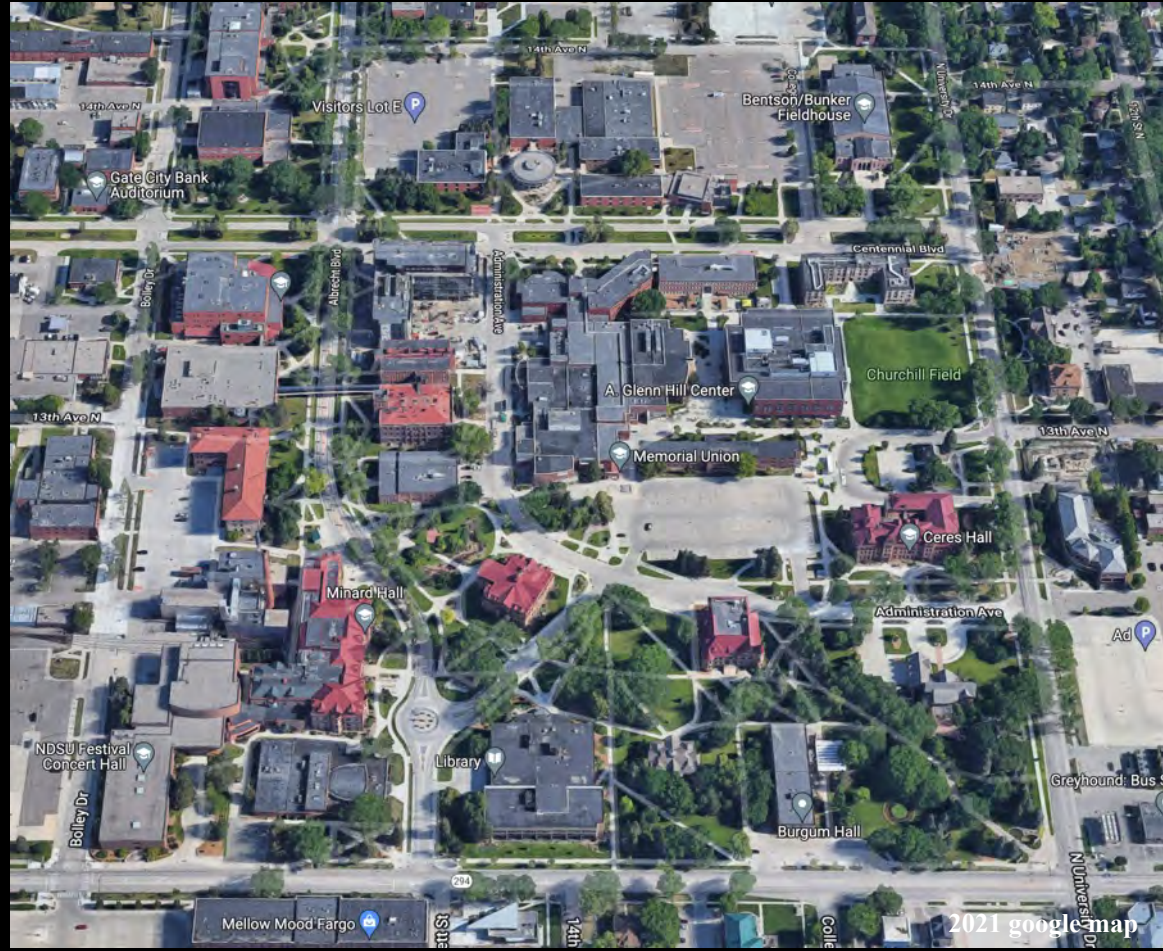




2008 Master Plan

STUDENT FOCUSED • LAND GRANT • RESEARCH UNIVERSITY **NDSU**

2022



SUMMARY + CONCLUSION



1928 Old Main and Gates







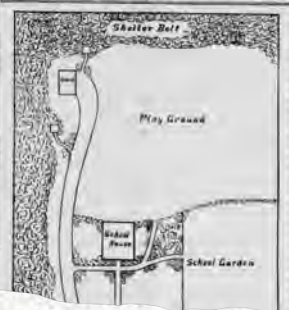
1921 Minard and South engineering

Prof. Waldron Submits Landscape Plans for District School Yards

The need for the improvement of school houses and grounds is so apparent and the benefit to be derived so obvious that we often wonder why progress in this direction has been so slow.

If education means for us the glorious thing we so constantly proclaim, we should make its surroundings and appointments correspondingly attractive.

The reasons for doing so are more far-reaching and important than a mere gratification of order the part of Prof. Waldron's plan is the purpose of a shelter belt superior to the southern atmosphere, was given to the club, and the A. C. E. July 7th and the school was given this year and we with the school and the school garden.



will make the growth. In a soil fairly made for general use, the trees make rapid growth both in the shade and in the sun under all conditions.

In the southern part of the state the soil is made very well. It is a good growth and soil protection. Either the white or the golden yellow is well suited to the portion of the hill. On the lower side to the social center of the community. People would gather there on all occasions and the benefit and stimulus they would derive in their minds.

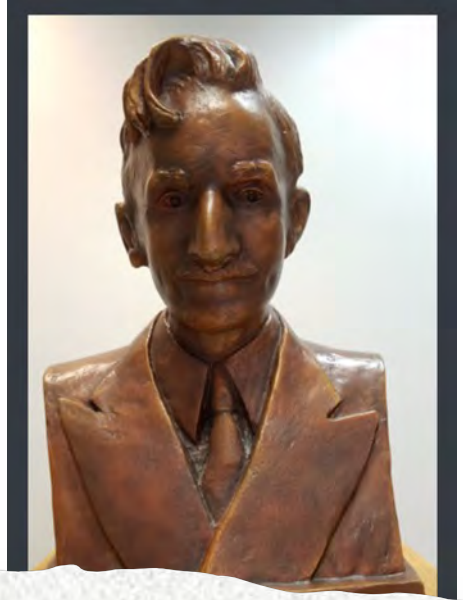
Quite as important as the trees is the shade they receive at the planting and afterward will not thrive in bare soil and they cannot successfully against weeds. The time when they will get enough to keep out and keep the soil moist, but until that is necessary.

Our observation is that there is a good thing

New Forestry Course

In order to meet the demand of those requiring special training at this time to fit them for work in connection with the shelter belt planting project a special course along that line of work will be offered this fall at the North Dakota Agricultural college.

The course, given under the direction of C. B. Waldron, professor of landscape gardening and forestry, will take up the matter of gathering and storing seeds, the growing of forest tree seedlings in nurseries and methods of planting and care of young plantations. Study will also be directed to the different species of trees that will be suited for the shelter belt planting project. The growing demand for this type of training has prompted college officials to install such a course of study which



PROFESSOR C.B. WALDRON — NDSU 1890+, WAS A PROLIFIC LANDSCAPE MAKER ACROSS NORTH DAKOTA. HIS SPIRIT OF SERVICE LIVES ON IN THE NDSU DEPARTMENT OF LANDSCAPE ARCHITECTURE 130+ YEARS LATER.

The last legislative assembly appropriated ten thousand dollars to secure and improve a site for a tuberculosis sanitarium; the site is selected by a board consisting of Dr. G. F. Ruediger, of the Putch Laboratory of the University, Dr. J. L. Grassick, superintendent of the State Board of Health, Dr. Fannis Dunn Quinn of Bismarck, H. J. Lord, of Cando, and the Governor. As provided by law, the board organized, and finally selected a site for such sanitarium on the south side of the Turtle Mountain, where we secured by purchase a gift a large tract of land, protected on the north and west by the high timber, overlooking and extending to a deep freshwater lake to the east, and on the southeast about a mile and a half away, the beautiful little city of Dunseith. The building site proper, while protected by north and west by the hills, is still very high in altitude and is perfect garden spot. The soil is deep and fertile and well adapted to all kinds of gardening. It is surrounded by a fine grove of natural bur-oak trees, while from the side hill immediately adjacent the flows several fine springs of pure water, all flowing into one little stream flowing by the building site.

To the members of the board it seems like an ideal spot—high altitude, pure air, pure water, shade and sunshine and protection from the bleak winds of the north and west.

We have expended altogether \$4,052.25 for the land and \$4,119.40 in laying out roads and improvement of the land. We have about \$1,000 of the appropriation still unexpended. We are under obligations to Prof. Waldron, the landscape gardener from the Agricultural College who did for us the landscape work, accepting for his services his expenses only.

We have expended about \$100,000 in the last two years fighting the disease of animals. Surely we can afford to spend a little fighting the great white plague. It is no longer an experiment. We now that consumptives are being cured every day in sanitariums throughout the land. Let us not be behind the times in this respect. We have



1920 Botany Class





THANK YOU

NDSU NORTH DAKOTA
STATE UNIVERSITY

STUDENT FOCUSED • LAND GRANT • RESEARCH UNIVERSITY

References:

Bender, T. (1984). Designs and Ideals. *Science*, 224, 715–17.

Elet, Y., and Duncan, V. (2019). Beatrix Farrand and campus landscape at Vassar: pedagogy and practice, 1925-29. *Studies in the History of Gardens and Designed Landscapes*, 39(2), 105-136.

Foykko, J. (1980). A History of Campus Planning at North Dakota State University (Nonpublished paper), retrieved physically from the NDSU Archives.

Morell & Nichols (1911). *Landscape Architecture*. Berkley: General Library, University of California.

Nelson, Nancy, & Tony, Dierckins. *Morell and Nichols*. Retrieved from <http://zenithcity.com/archive/people-biography/morell-nichols>, September 16th, 2020.

Remele, L., Striner, R., Bruegmann, R., & Perry, L. (1989). *The North Dakota State Capitol: Architecture and History*. North Dakota: State Historical Society of North Dakota.

Turner, P. V. (1984). *Campus: An American Planning Tradition*. New York: Architectural History Foundation.

Walker, Victor J. (1997). Pioneers of American landscape design: an annotated bibliography and pioneers of American landscape design II: an annotated bibliography. *Landscape Journal*, 16(1), 117–119.

Way, T. (2016). The urban university's hybrid campus. *Journal of Landscape Architecture*, 11(1), 42-55.

Wirth, [quote from Minneapolis Parks website](#).