

HOW DESIGN INFLUENCES LIFESTYLE

BUILT VS NATURAL ENVIRONMENT

CONNER RILEY

HOW CAN THE BUILT ENVIRONMENT IN WHICH YOU LIVE,
INFLUENCE YOUR LIFESTYLE AND WAY OF LIFE?

THEORETICAL NARRATIVE

OVERVIEW

Striving to bridge the gap between the built environment and how inhabitants interact with and are influenced by it.

Focus on the built environment's ability to positively influence lifestyle, overall health, and the mindset of its inhabitants within the typology of single-family homes.

Correlation of Culture, Lifestyle, and Residences of the Midwest and Scandinavian Countries of Finland, Norway, and Denmark.

THREE PRIMARY FOCUS POINTS

Regional climate similarities between the Midwest and Scandinavian Regions

Analysis and integration of Scandinavian single-family home's spatial elements, spatial arrangement, and overall size to inform better overall design solutions.

Integration of nature, sustainable materials, and environmental design decisions to inform better design and healthier living environments.

PREMISE FOR INVESTIGATION

PERSONAL PERSPECTIVE

Desire to provide additional housing options to the region.

Opportunity to develop a solution that is not available currently.

Driving factor for a future of entrepreneurship and design build practice.

THESIS PERSPECTIVE

Lack of option in the housing market for homeowners.

Regional climate similarities between the Midwest and Scandinavia.

World Happiness Report

WORLD HAPPINESS REPORT

Are you familiar with the World Happiness Report?

- Finland at #1 Spot last 3 Years in a row.
- All Nordic Countries Top 5 or Top 10 every year.

THREE PRIMARY CHAPTERS

1. How Environmental Quality Affects Our Happiness
2. Sustainable Development and Human Well-Being
3. The Nordic Exceptionalism: What Explains Why the Nordic Countries are Constantly Among the Happiest in the World

HOW DOES SCANDINAVIAN LIFE & CULTURE
INFLUENCE THEIR BUILT ENVIRONMENT?

FINNISH CULTURE & LIFESTYLE

DESIGN PHILOSOPHIES INFLUENCED BY LIFESTYLE PHILOSOPHIES

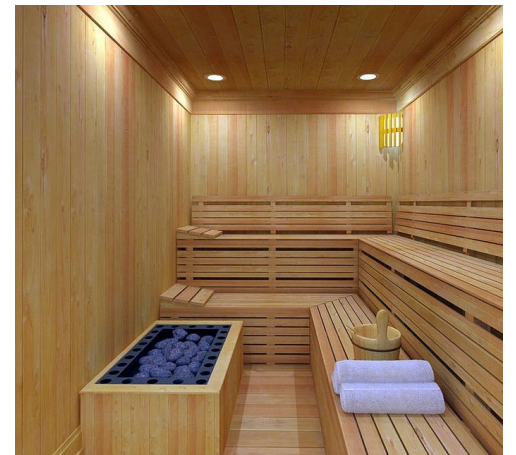
SCANDINAVIAN LIFESTYLE PHILOSOPHIES

- Connection To Nature
- Simplicity
- Trust & Community
- Healthy Lifestyle

REINFORCED BY FINLAND RESIDENT



NATURE &
ENVIRONMENT HEALTH



SAUNA

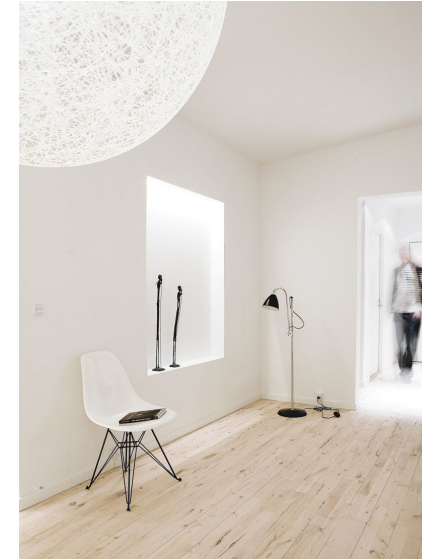
FOCUS ON FINNISH RESIDENCES

DESIGN PHILOSOPHIES

INTERIOR DESIGN ELEMENTS

- Wood, Wood, Wood
- Light, Muted Colors
- Natural Light
- Connection To Nature (Greenery)
- Function Layout And Less Wasted Space

ANNUAL HOUSING FAIR OF FINLAND



PRIMARY FOCUS – RESIDENTIAL DESIGN

SCANDINAVIAN RESIDENTIAL DESIGN



HONKA SAVUKVARTSI – VANTA, FINLAND



HONKA MARKKI - SEINÄJOKI, FINLAND



HONKA HUOMEN

PRIMARY FOCUS – RESIDENTIAL DESIGN

MIDWESTERN RESIDENTIAL MODEL HOMES



CRAFTSMAN RAMBLER – WEST FARGO, ND



TRADITIONAL 2-STORY – WEST FARGO, ND



TRADITIONAL BI-LEVEL – WEST FARGO, ND

CURRENT SITE & NEIGHBORHOOD



CURRENT SITE & NEIGHBORHOOD



SOLUTION

OVERVIEW

4 Bedroom 3 Bath

Finished: 2,300 Sf

Unfinished: 290 Sf

Garage: 610 Sf

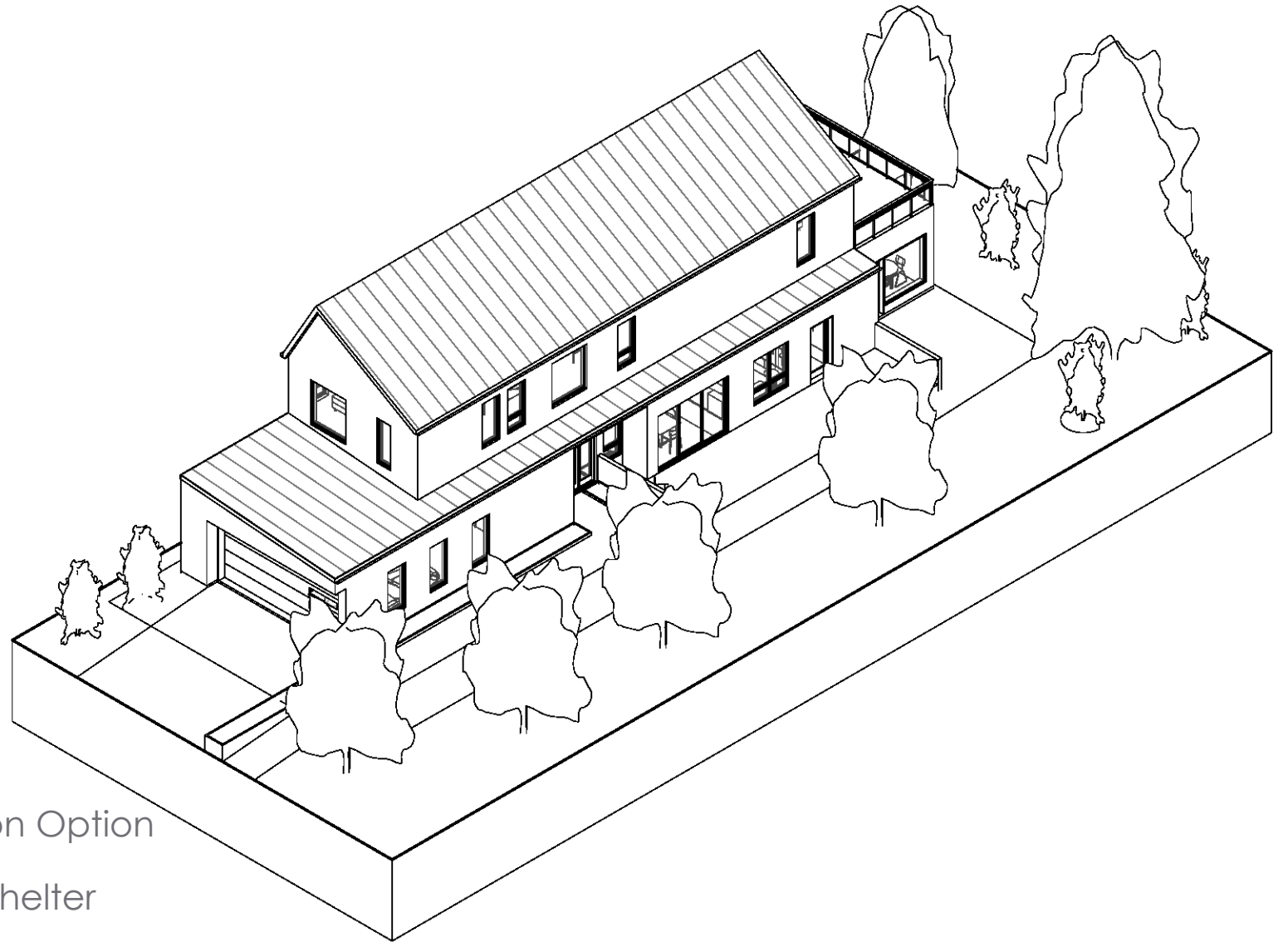
AREAS OF FOCUS

Private Sauna

Interior & Exterior Greenery

Grandparents Suite - Addition Option

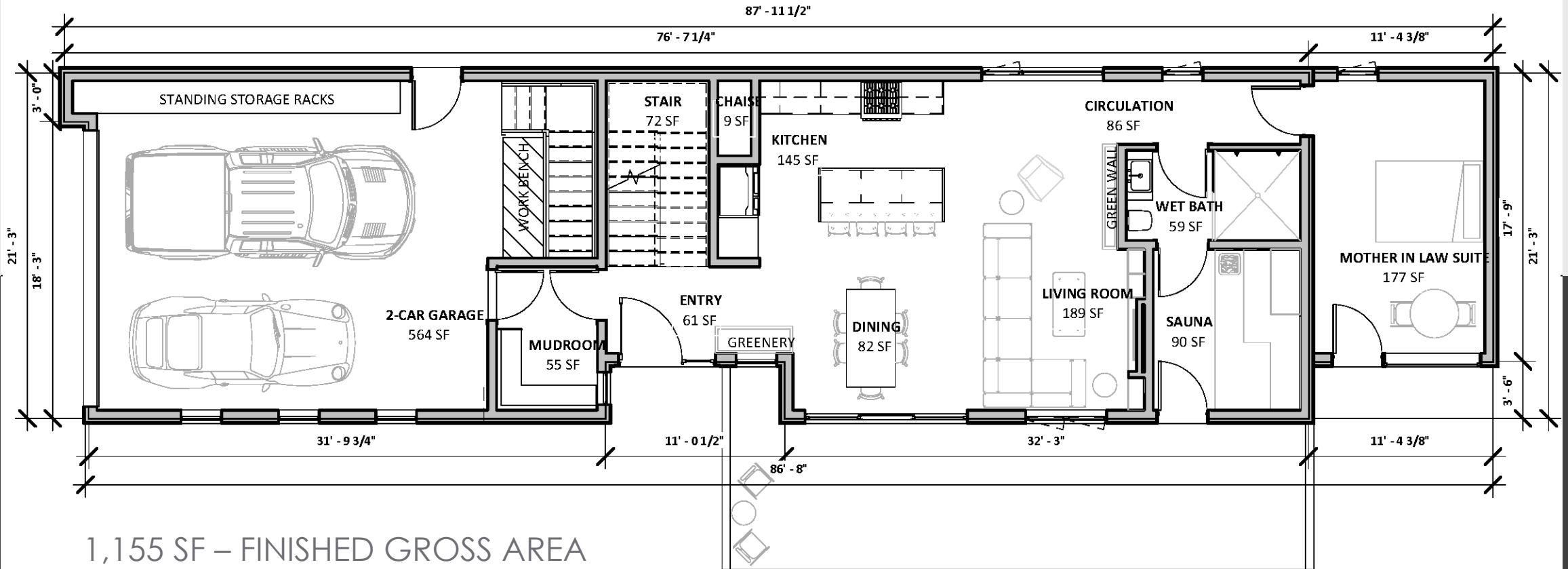
Oversized Garage & Storm Shelter



PRIMARY RENDER

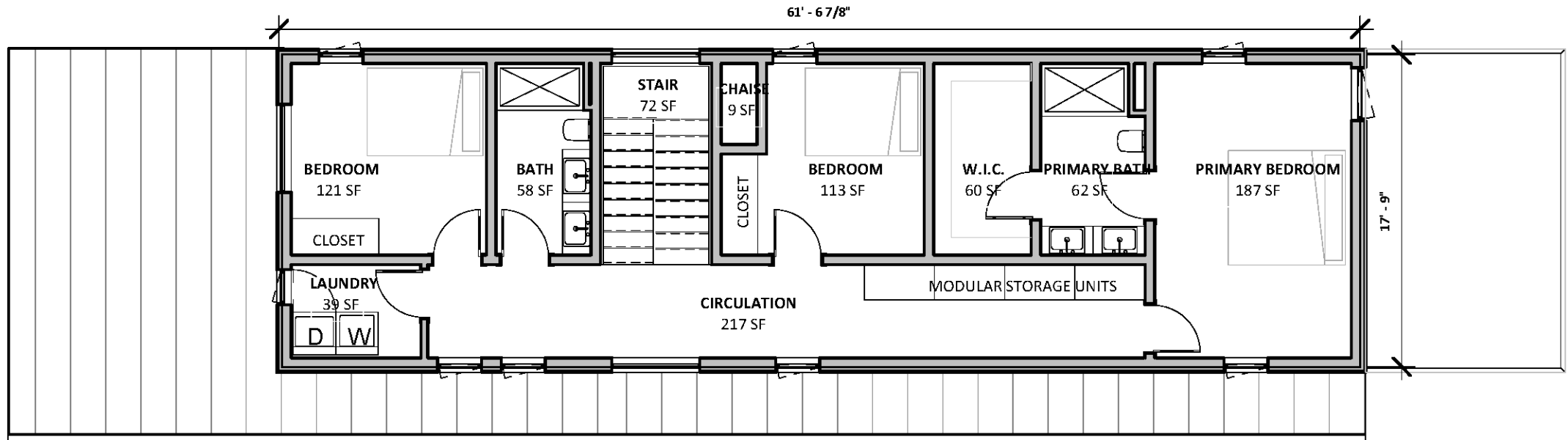


MAIN LEVEL



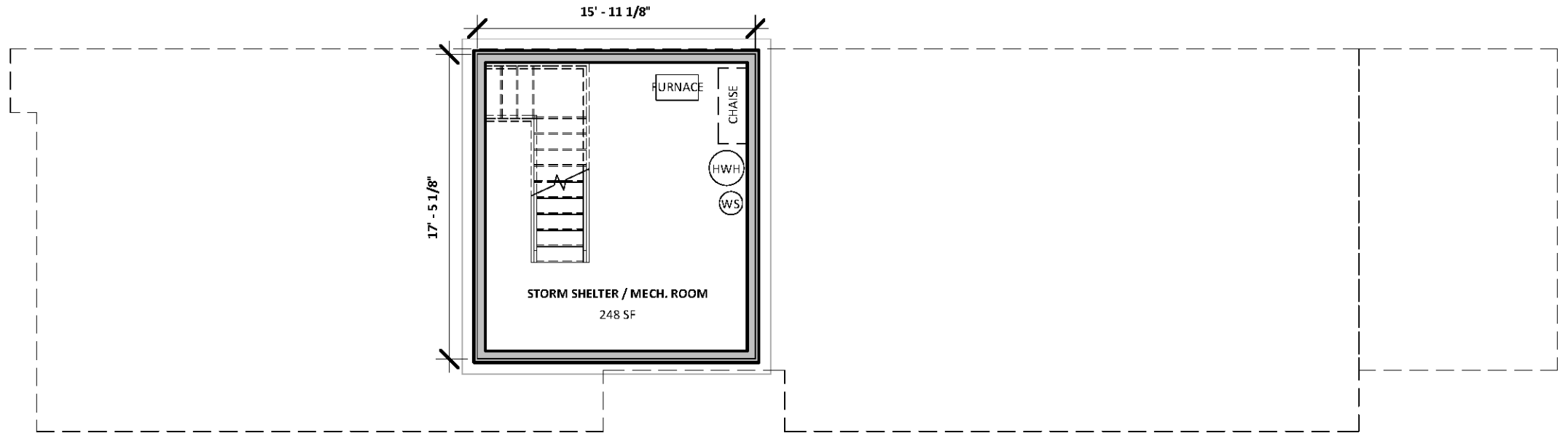
1,155 SF – FINISHED GROSS AREA

UPPER LEVEL



1,145 SF – FINISHED GROSS AREA

SUB LEVEL



290 SF – UNFINISHED GROSS AREA

EXTERIOR ELEVATIONS



NORTH

EAST

EXTERIOR ELEVATIONS

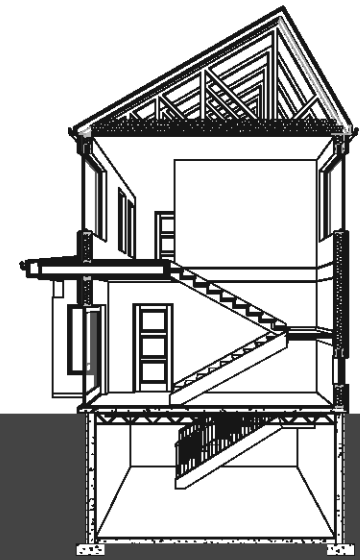


SOUTH



WEST

LONGITUDINAL & TRANSVERSE SECTIONS



SITE PLAN & EXPLODED DIAGRAM

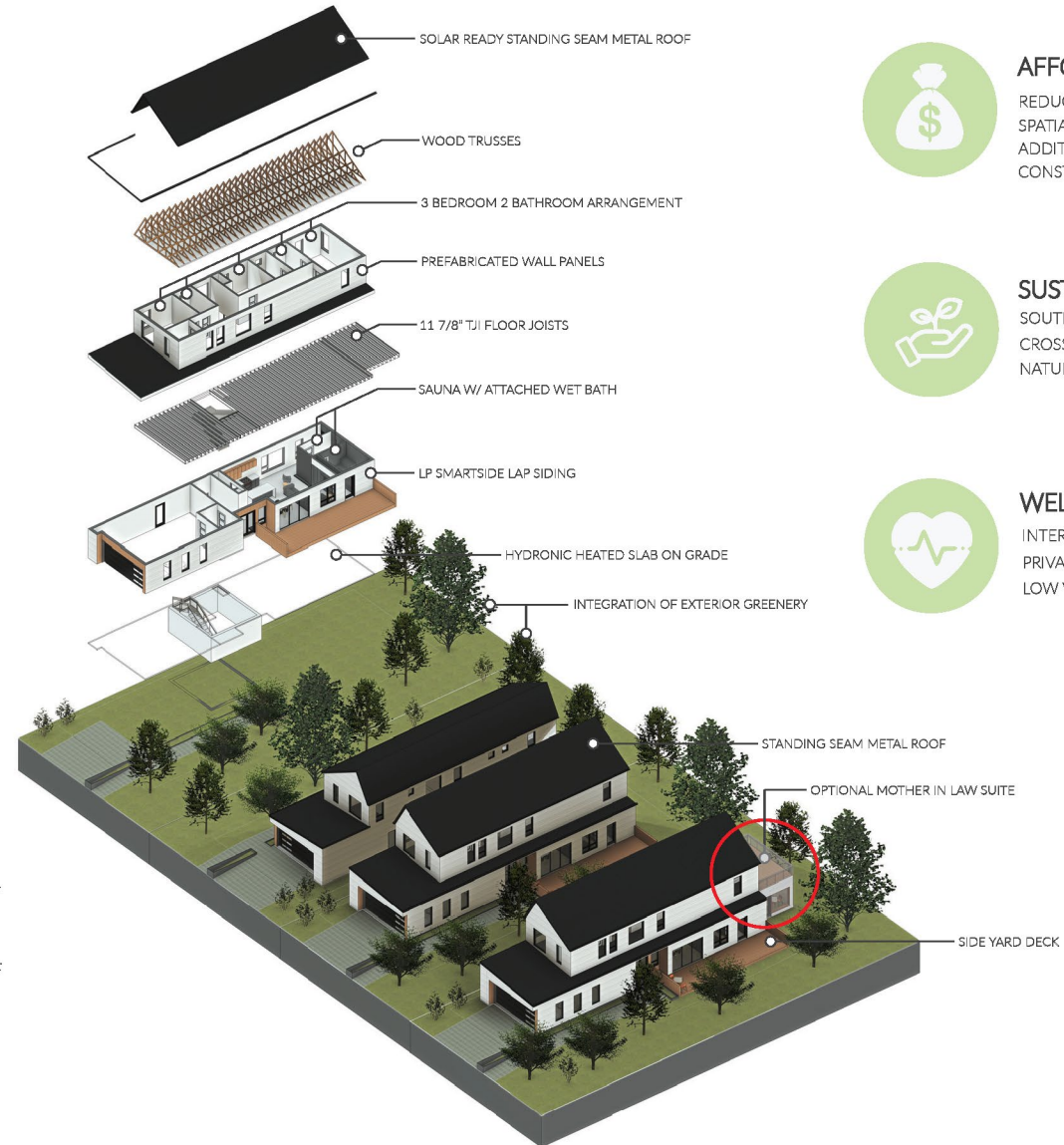
MULTI PARCEL INTEGRATION

FOCUS ON THREE PRIMARY CATEGORIES

COST BREAKDOWN

\$300,000 BUDGET

HOUSE SQUARE FOOTAGE	2,140 SF	GARAGE SQUARE FOOTAGE	630 SF
\$105/SF FINISHED FLOOR AREA	x	\$50/SF CONSTRUCTED FLOOR AREA	x
TOTAL HOUSE COST:	\$224,700 @ \$105/SF	TOTAL GARAGE COST:	\$31,500 @ \$50/SF
PARCEL COST	\$35,000		
TOTAL PROJECT COST	\$291,200		



AFFORDABILITY

REDUCED SQUARE FOOTAGE
SPATIAL EFFICIENCIES
ADDITION POTENTIAL
CONSTRUCTION METHODS



SUSTAINABILITY

SOUTHERN EXPOSURE
CROSS VENTILATION
NATURAL LIGHT



WELLNESS

INTERIOR & EXTERIOR GREENERY
PRIVATE SAUNA
LOW VOC MATERIALS

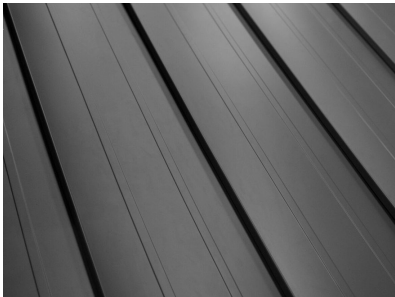
EXTERIOR MATERIAL FINISHES



LP LAP SIDING



BOARD & BATTEN



METAL STANDING SEAM



ENVELOPE AND SYSTEMS

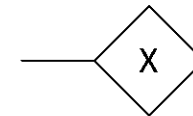
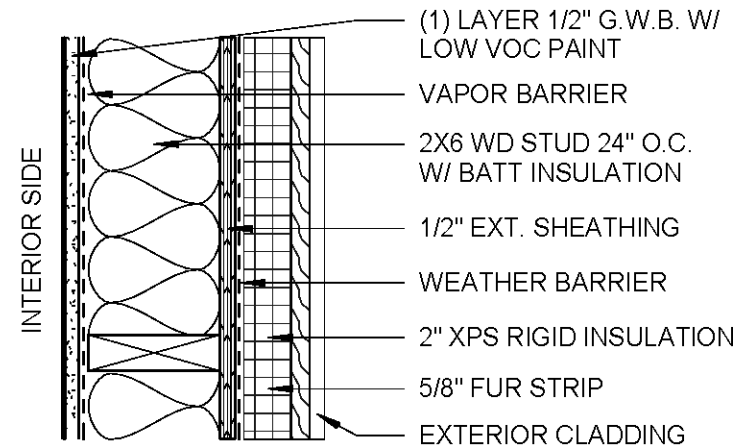
NATURAL SYSTEMS

- CROSS VENTILATION
- SOLAR EXPOSURE
- DAYLIGHTING

MECHANICAL SYSTEMS

- HEAT RECOVERY VENTILATOR
- HIGH EFFICIENCY FURNACE
- OPTIONAL SOLAR PANELS

EXTERIOR ENVELOPE



EXT. WALL TYPE

INTERIOR RENDERS



ENTRY



GREAT ROOM

INTERIOR RENDERS



PRIVATE SAUNA



EXTERIOR DECK

INFLUENCING LIFESTYLE

INTERIOR

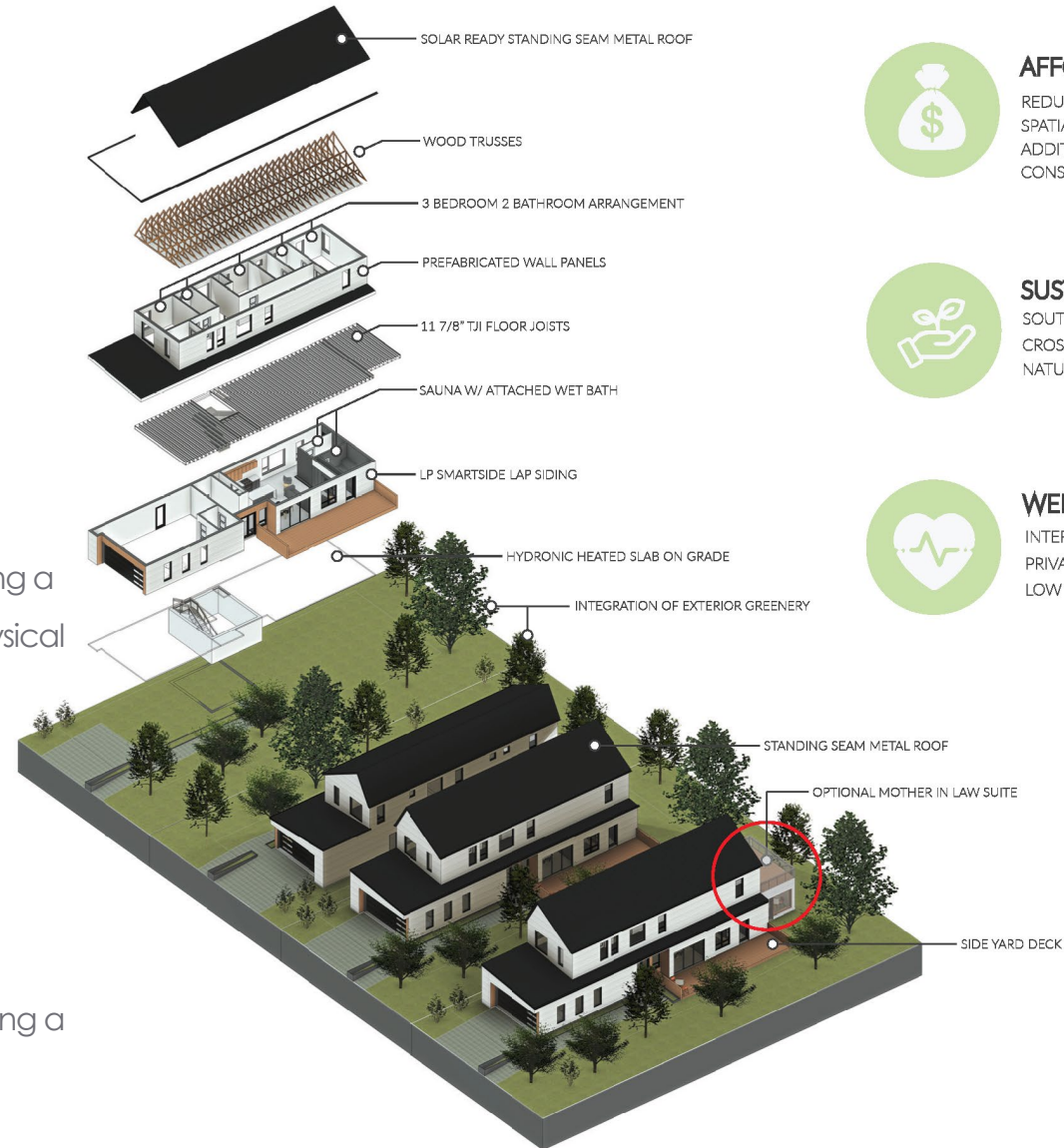
- Abundance of Natural Light
- Operable Windows to maximize Natural Ventilation
- Integration of Interior Greenery
- Private Sauna

All interior factors influence the inhabitant's lifestyle by providing a healthier interior environment year-round increasing both physical and mental wellbeing.

EXTERIOR

- Efficient use of side and backyard area
- Integration of Greenery (Tree and Planted Vegetation)

All exterior factors influence the inhabitant's lifestyle by providing a more communal and private space to enjoy being outside.



AFFORDABILITY

REDUCED SQUARE FOOTAGE
SPATIAL EFFICIENCIES
ADDITION POTENTIAL
CONSTRUCTION METHODS



SUSTAINABILITY

SOUTHERN EXPOSURE
CROSS VENTILATION
NATURAL LIGHT



WELLNESS

INTERIOR & EXTERIOR GREENERY
PRIVATE SAUNA
LOW VOC MATERIALS

HOW CAN THE BUILT ENVIRONMENT IN WHICH YOU LIVE, INFLUENCE YOUR LIFESTYLE AND WAY OF LIFE?