

A NEW PHASE OF AGING

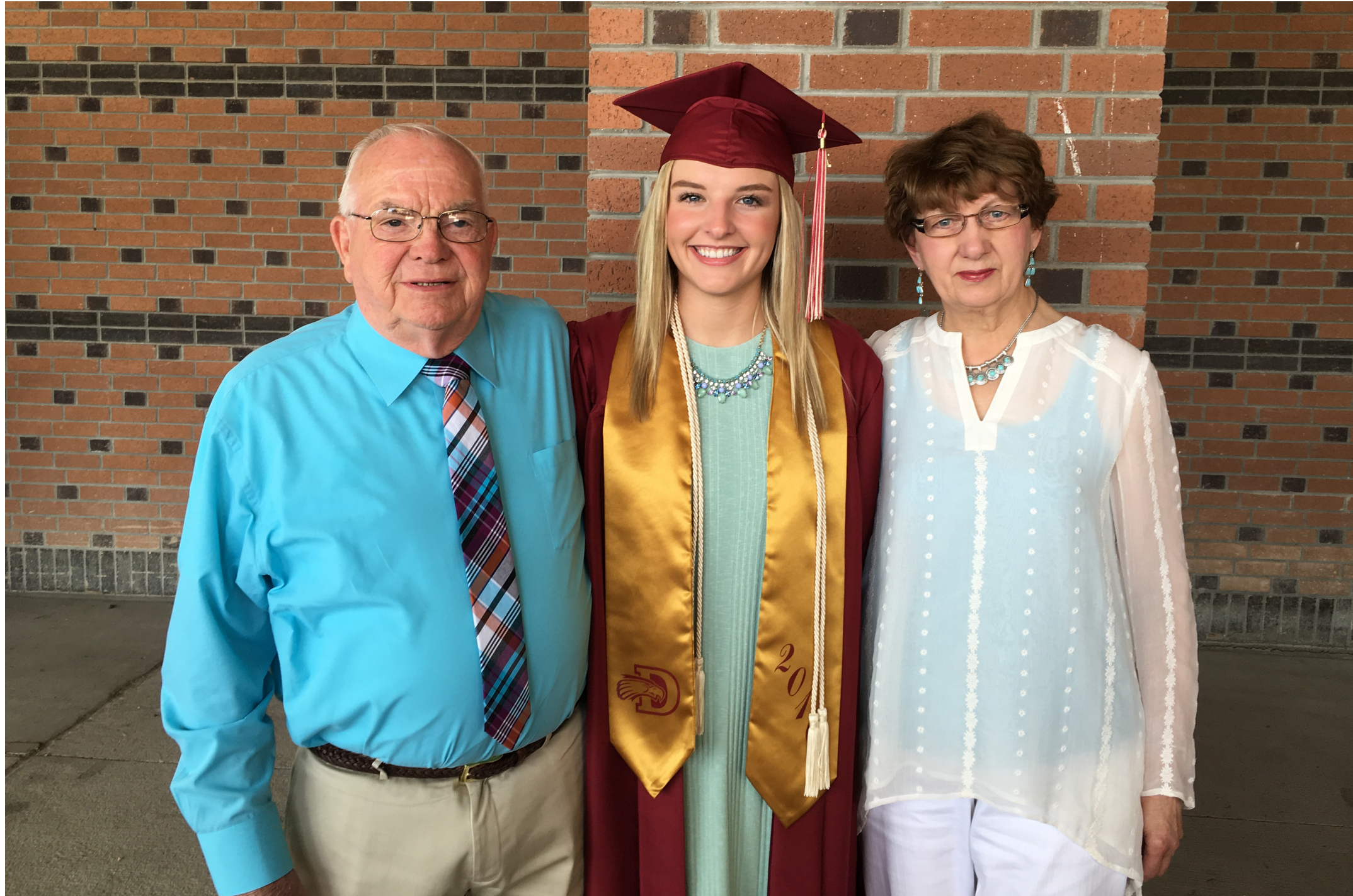
SAMANTHA SCHRADER | SPRING 2021 | FINAL THESIS PRESENTATION



Thesis:

How can reprogramming an underutilized building provide healthy and positive lifestyles for the aging population?

Inspiration



GOAL:

Re-imagination of an underutilized mall to provide a space for aging in place and engagement within society for the seniors in the community.

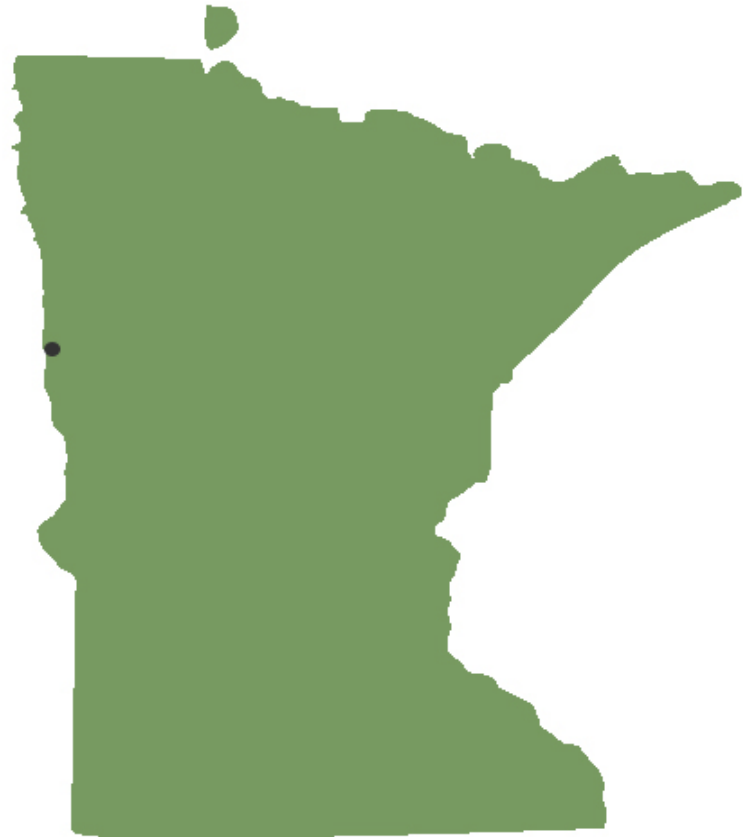
TYOLOGY:

Independent and Assisted Senior Living Community

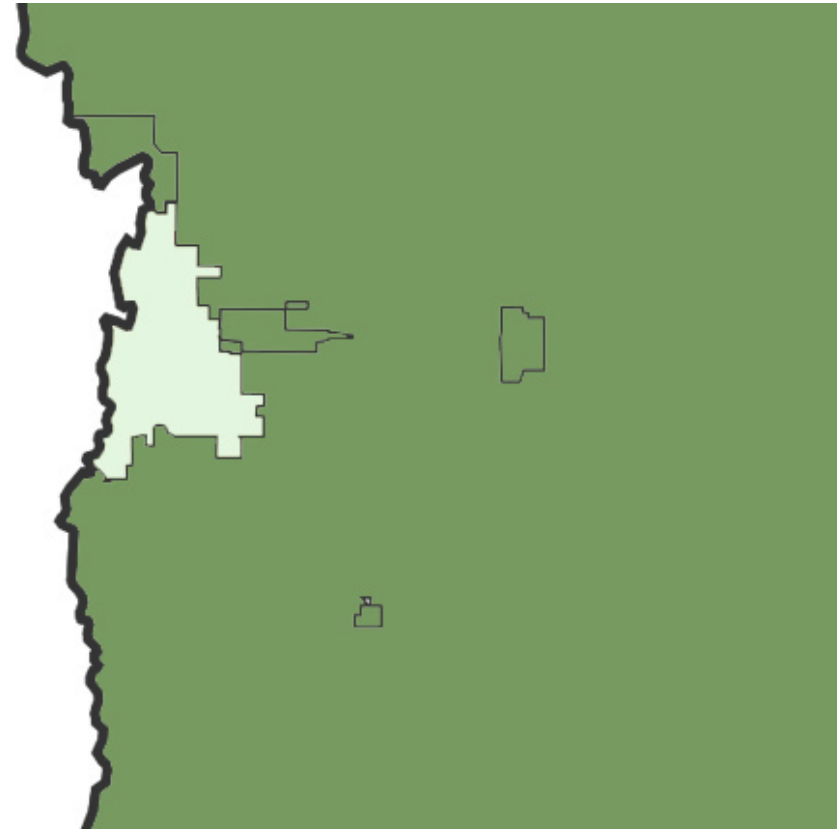
JUSTIFICATION:

- Demand
- Longevity of Life
- Redefining Age

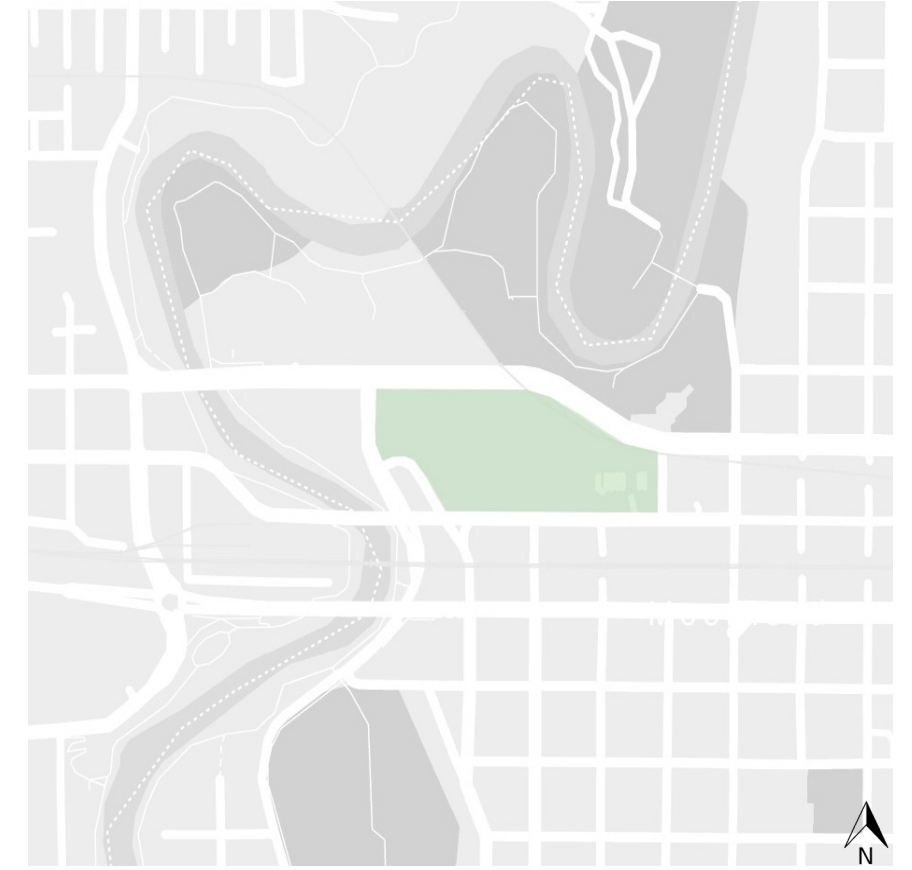
The Site



REGION | MIDWEST, UNITED STATES



CITY | MOORHEAD, MINNESOTA



SITE | MOORHEAD CENTER MALL





North



South



East



West



Biking/ Walking Trails



Existing Parking Ramp



MAT Bus Stops



Red River

Research

Baby Boomers

“A person born in the U.S. following the end of World War II (usually considered to be in the years from 1946 to 1964)”

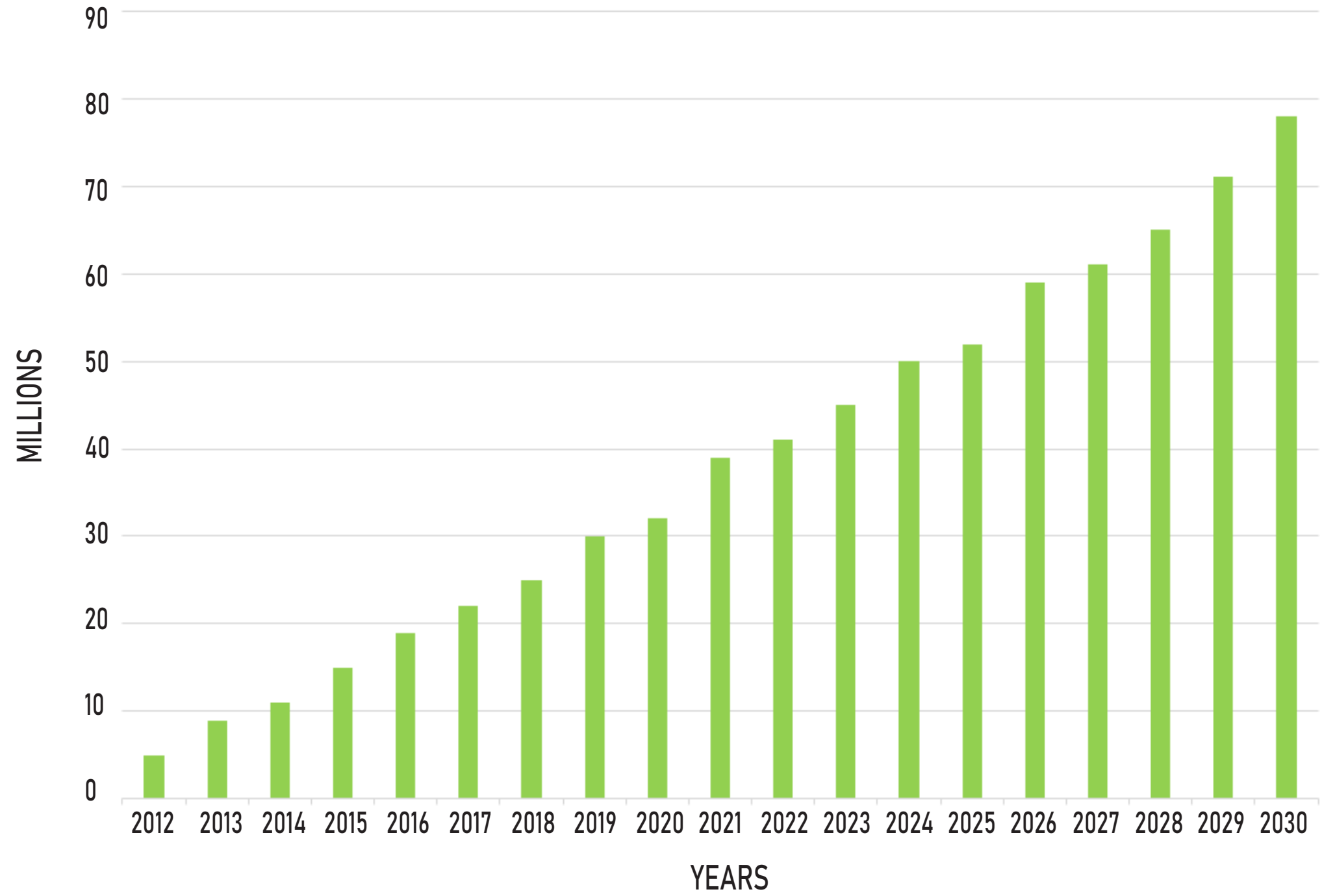
- Merriam Webster Dictionary

Aging in Place

“Allows residents the opportunity to remain in the living communities as they age and adapt to the needs and abilities of the individual.”

- The History of Senior Care

RETIREMENT OF BABY BOOMERS



Needs of the Aging Population:

- Connection with Nature
- Sense of Independence
- Physical Participation
- Sense of Purpose
- New Experiences and Knowledge
- Sense of Belonging
- Engagement & Connection with Society

Process

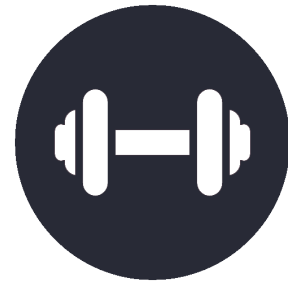


Community

A sense of neighborhood is created by including spaces to gather and socialize around the site for residents and non-residents to enjoy.

Independence

Residents feel a sense of freedom and comfort with the transitional design elements implemented for aging in place.



Healthy Living

The program encourages exercise of one's mind and body with access to a variety of activities within the building.

Accessibility

Safety and convenience for the users is integrated into the design of the building and site.



Engagement

Intimate spaces throughout the building foster a connection between residents and non-residents.

Mindset

The building allows the mentality of aging to be transition into a favorable chapter of life.



.....
Preliminary Site Considerations
.....

- A) Eliminate parking to provide additional green space and vegetation on site
 - B) More efficient vehicular parking layout
 - C) Promote drop offs and visits with easy access to building and site
 - D) Pedestrian friendly site
 - E) Connect building and site with walking/biking trails and river
 - F) Establish entrance for daycare and building staff
 - G) Encourage the use of on site transportation
 - H) Views of Red River
 - I) Enhance the views entering Moorhead
-



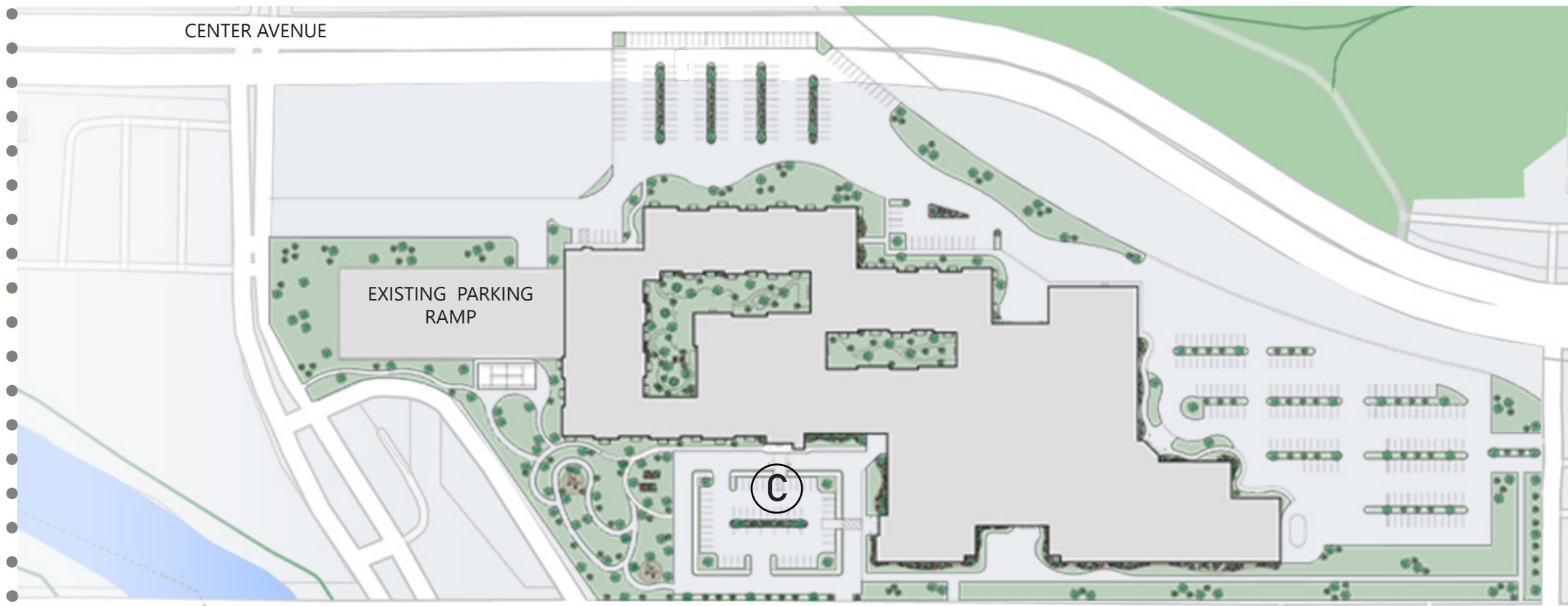
.....
Preliminary Site Considerations
.....

- A) Eliminate parking to provide additional green space and vegetation on site
 - B) More efficient vehicular parking layout
 - C) Promote drop offs and visits with easy access to building and site
 - D) Pedestrian friendly site
 - E) Connect building and site with walking/biking trails and river
 - F) Establish entrance for daycare and building staff
 - G) Encourage the use of on site transportation
 - H) Views of Red River
 - I) Enhance the views entering Moorhead
-



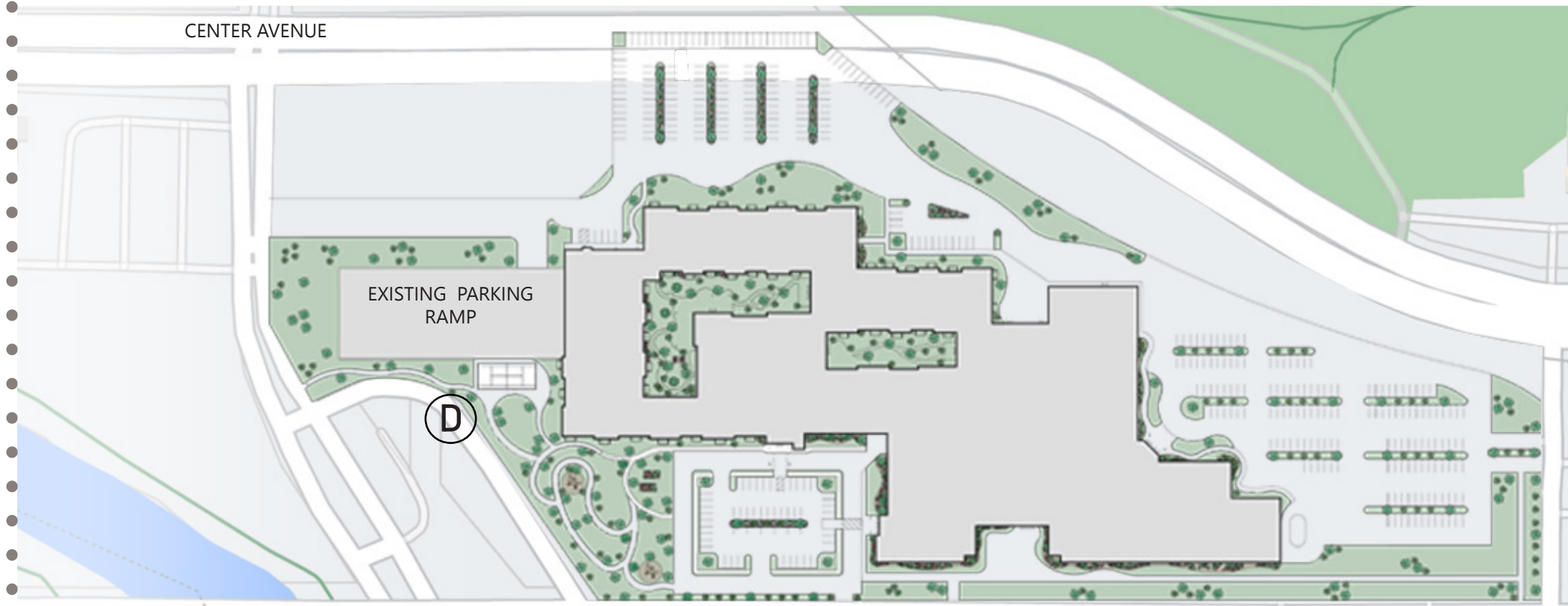
.....
Preliminary Site Considerations
.....

- A) Eliminate parking to provide additional green space and vegetation on site
 - B) More efficient vehicular parking layout
 - C) Promote drop offs and visits with easy access to building and site
 - D) Pedestrian friendly site
 - E) Connect building and site with walking/biking trails and river
 - F) Establish entrance for daycare and building staff
 - G) Encourage the use of on site transportation
 - H) Views of Red River
 - I) Enhance the views entering Moorhead
-



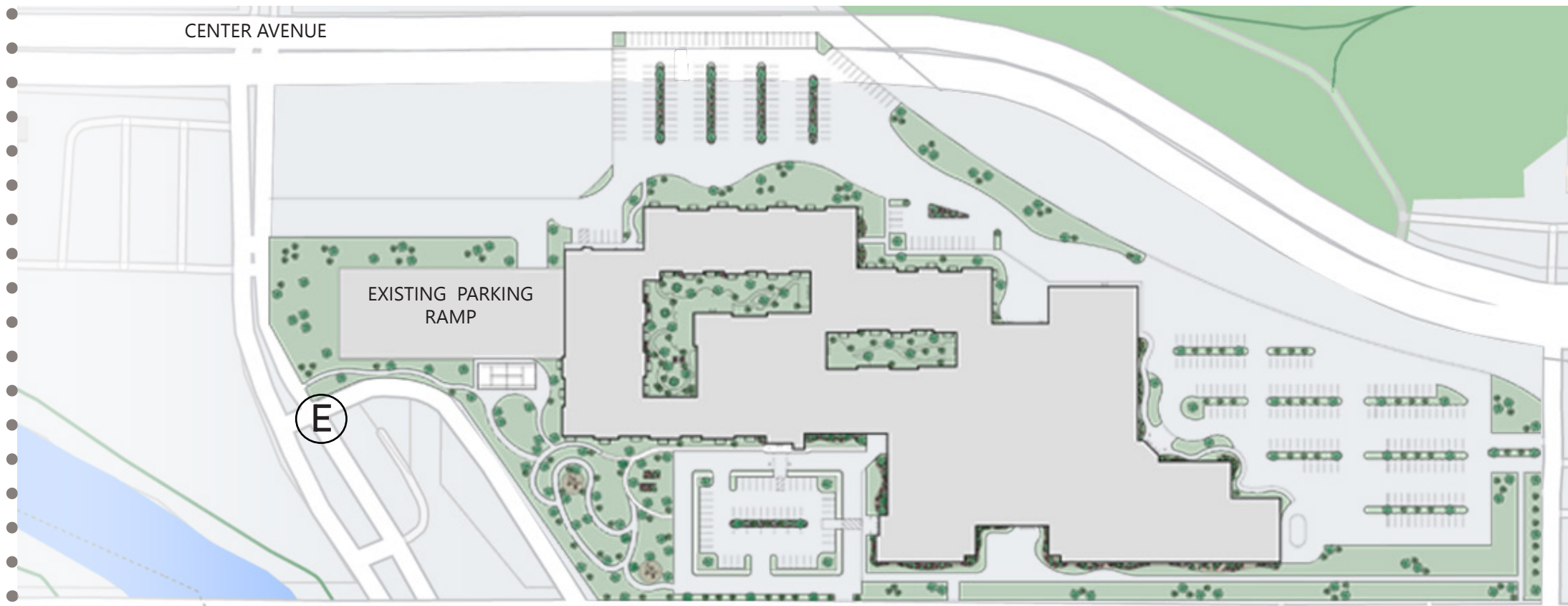
.....
Preliminary Site Considerations
.....

- A) Eliminate parking to provide additional green space and vegetation on site
 - B) More efficient vehicular parking layout
 - C) Promote drop offs and visits with easy access to building and site
 - D) Pedestrian friendly site
 - E) Connect building and site with walking/biking trails and river
 - F) Establish entrance for daycare and building staff
 - G) Encourage the use of on site transportation
 - H) Views of Red River
 - I) Enhance the views entering Moorhead
-



.....
Preliminary Site Considerations
.....

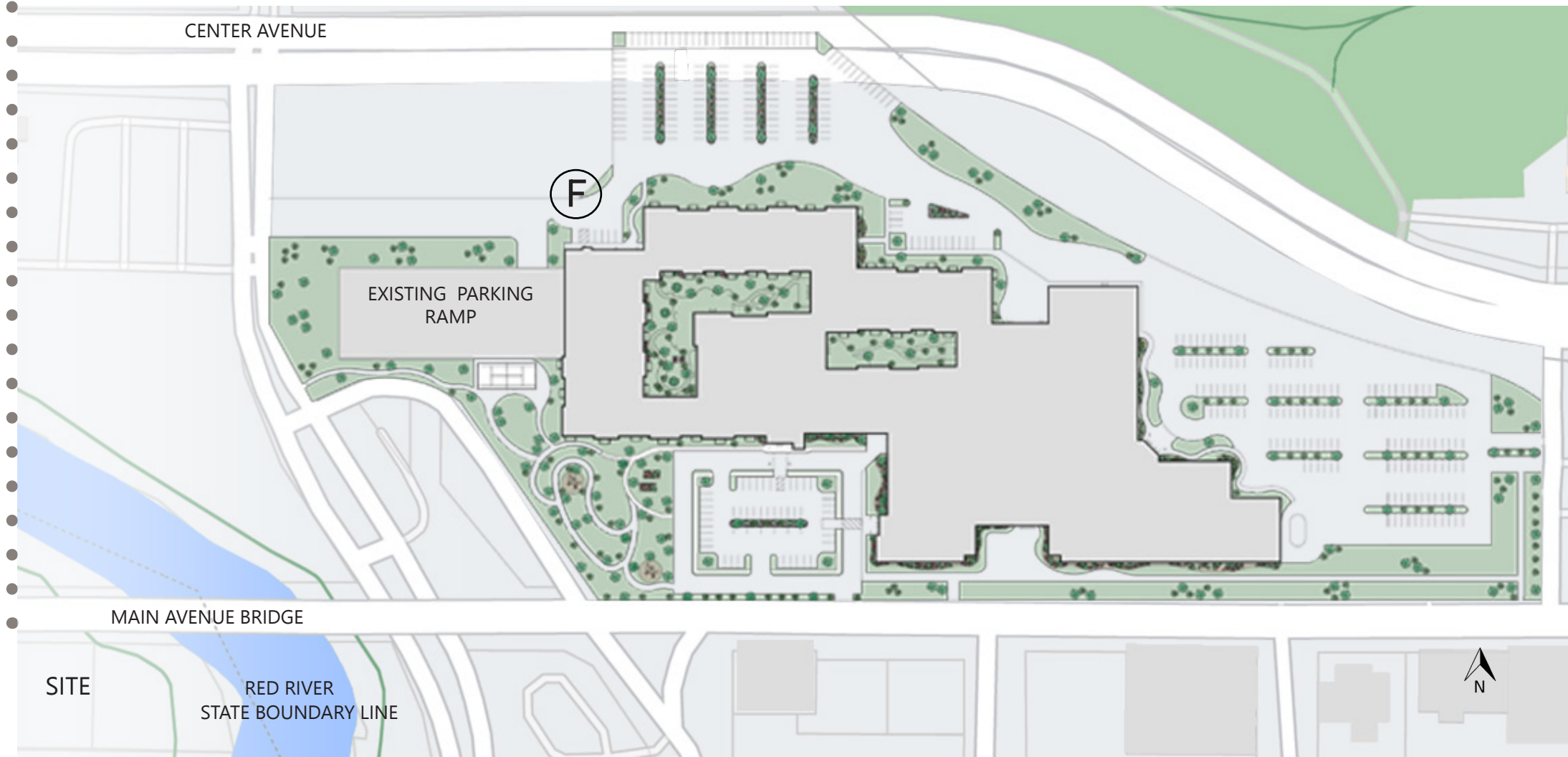
- A) Eliminate parking to provide additional green space and vegetation on site
 - B) More efficient vehicular parking layout
 - C) Promote drop offs and visits with easy access to building and site
 - D) Pedestrian friendly site
 - **E) Connect building and site with walking/biking trails and river**
 - F) Establish entrance for daycare and building staff
 - G) Encourage the use of on site transportation
 - H) Views of Red River
 - I) Enhance the views entering Moorhead
-



.....

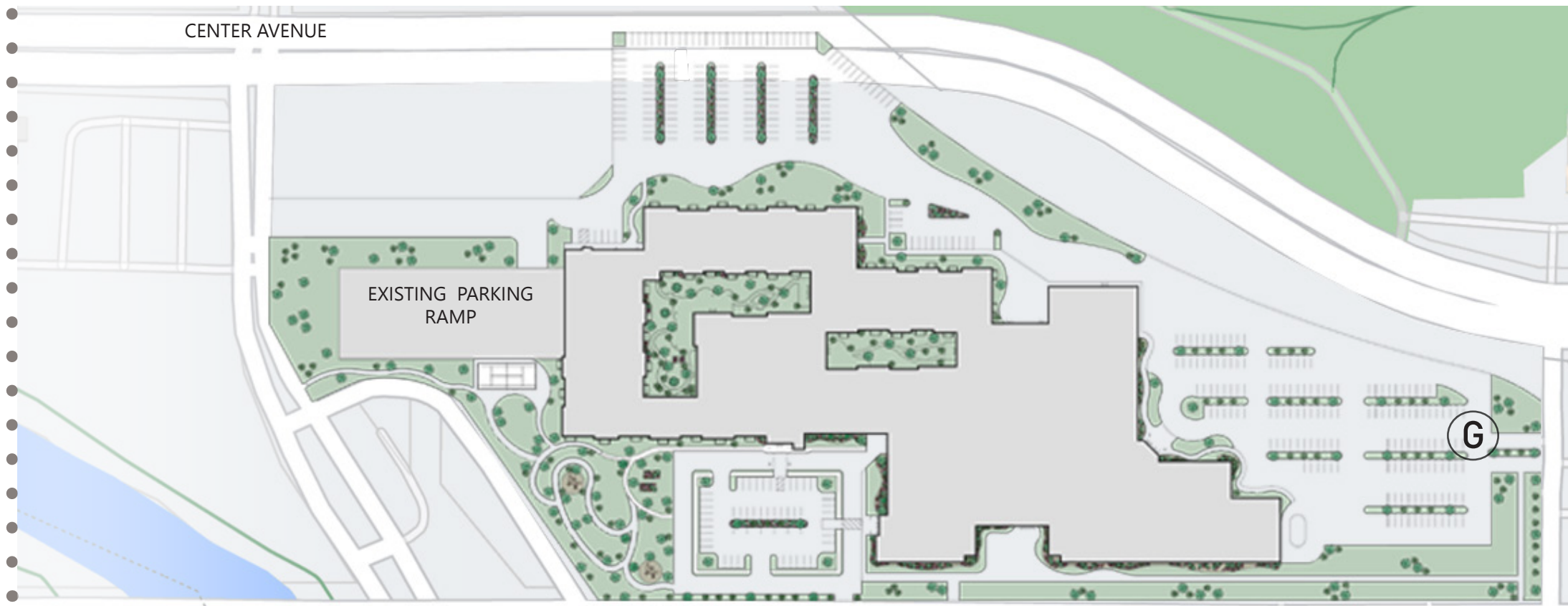
Preliminary Site Considerations

- A) Eliminate parking to provide additional green space and vegetation on site
 - B) More efficient vehicular parking layout
 - C) Promote drop offs and visits with easy access to building and site
 - D) Pedestrian friendly site
 - E) Connect building and site with walking/biking trails and river
 - F) Establish entrance for daycare and building staff
 - G) Encourage the use of on site transportation
 - H) Views of Red River
 - I) Enhance the views entering Moorhead
-



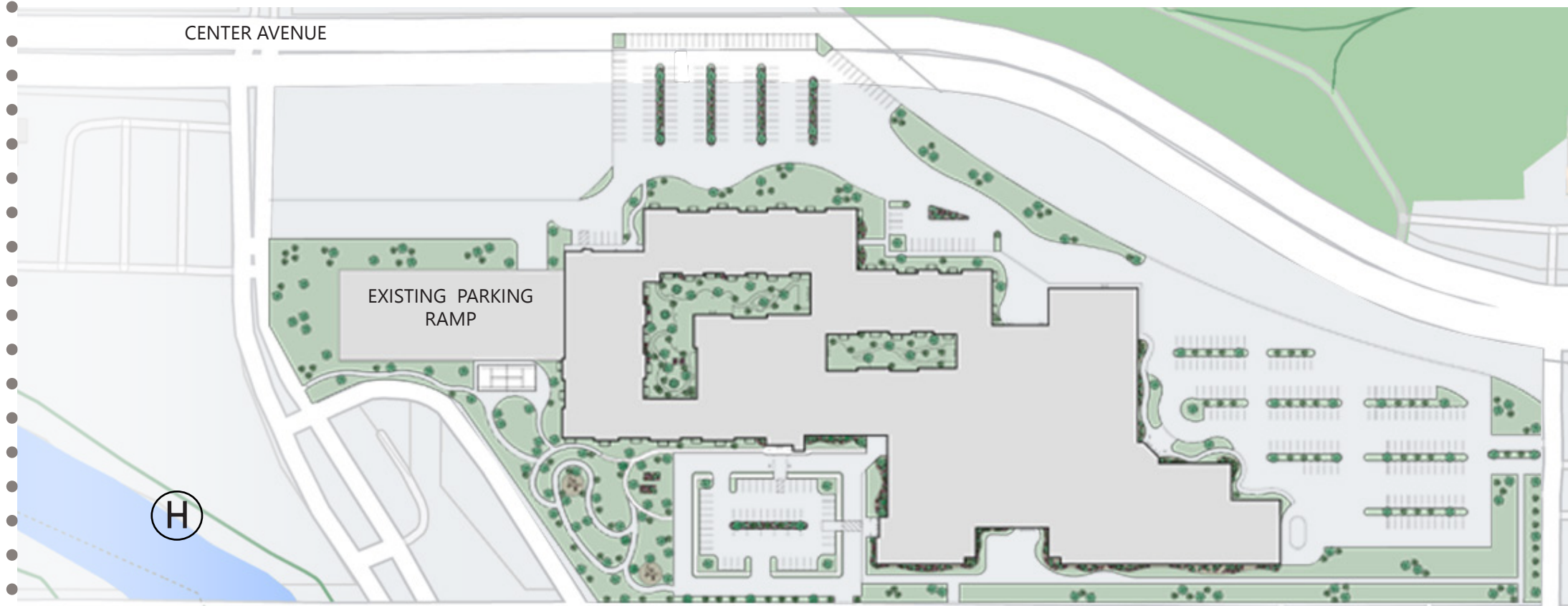
.....
Preliminary Site Considerations
.....

- A) Eliminate parking to provide additional green space and vegetation on site
 - B) More efficient vehicular parking layout
 - C) Promote drop offs and visits with easy access to building and site
 - D) Pedestrian friendly site
 - E) Connect building and site with walking/biking trails and river
 - F) Establish entrance for daycare and building staff
 - G) Encourage the use of on site transportation
 - H) Views of Red River
 - I) Enhance the views entering Moorhead
-



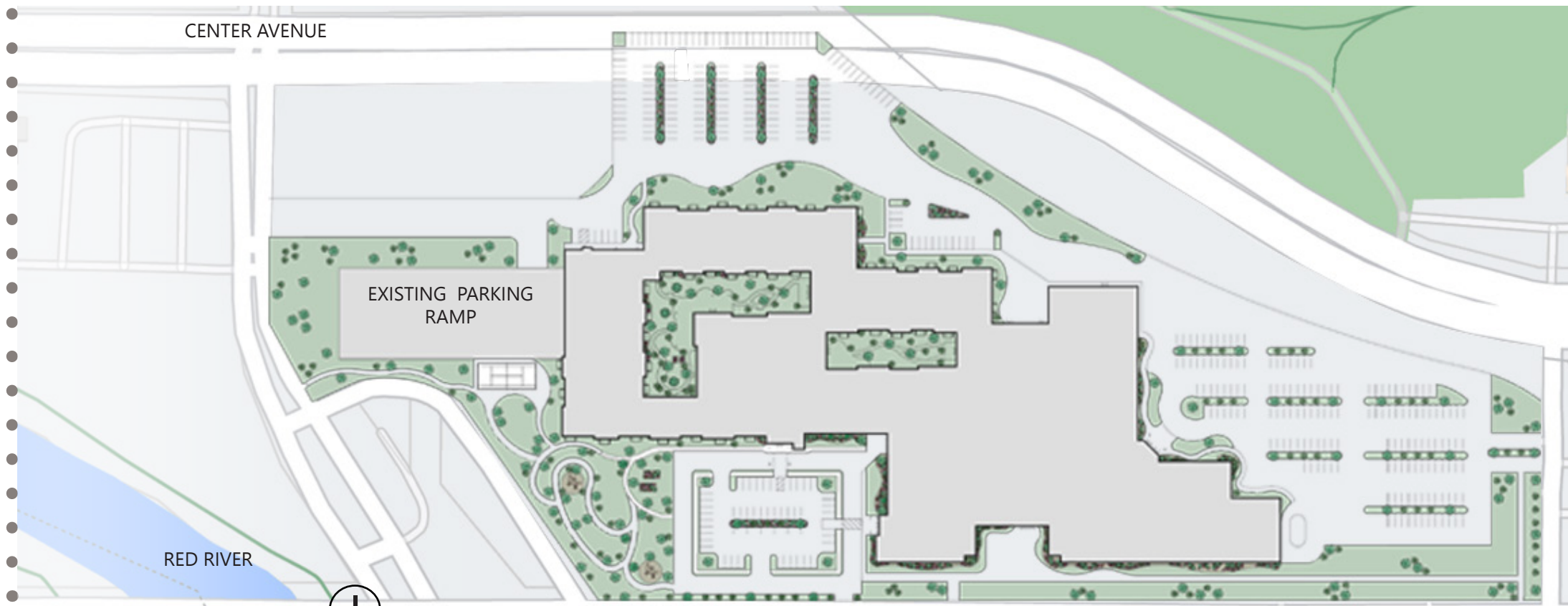
.....
Preliminary Site Considerations
.....

- A) Eliminate parking to provide additional green space and vegetation on site
- B) More efficient vehicular parking layout
- C) Promote drop offs and visits with easy access to building and site
- D) Pedestrian friendly site
- E) Connect building and site with walking/biking trails and river
- F) Establish entrance for daycare and building staff
- G) Encourage the use of on site transportation
- **H) Views of Red River**
- I) Enhance the views entering Moorhead

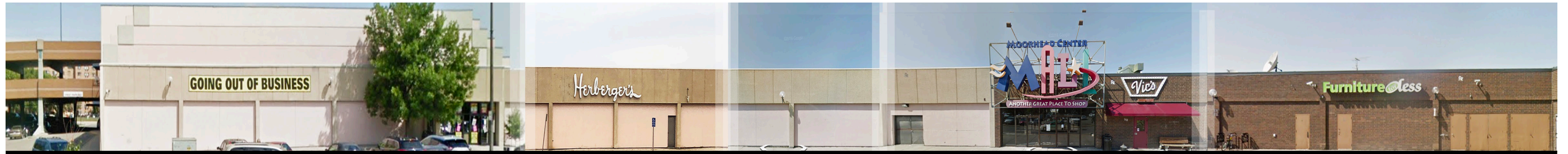


.....
Preliminary Site Considerations
.....

- A) Eliminate parking to provide additional green space and vegetation on site
 - B) More efficient vehicular parking layout
 - C) Promote drop offs and visits with easy access to building and site
 - D) Pedestrian friendly site
 - E) Connect building and site with walking/biking trails and river
 - F) Establish entrance for daycare and building staff
 - G) Encourage the use of on site transportation
 - H) Views of Red River
 - **I) Enhance the views entering Moorhead**
-



Existing vs. New



Existing South Elevation



South Elevation

Existing vs. New

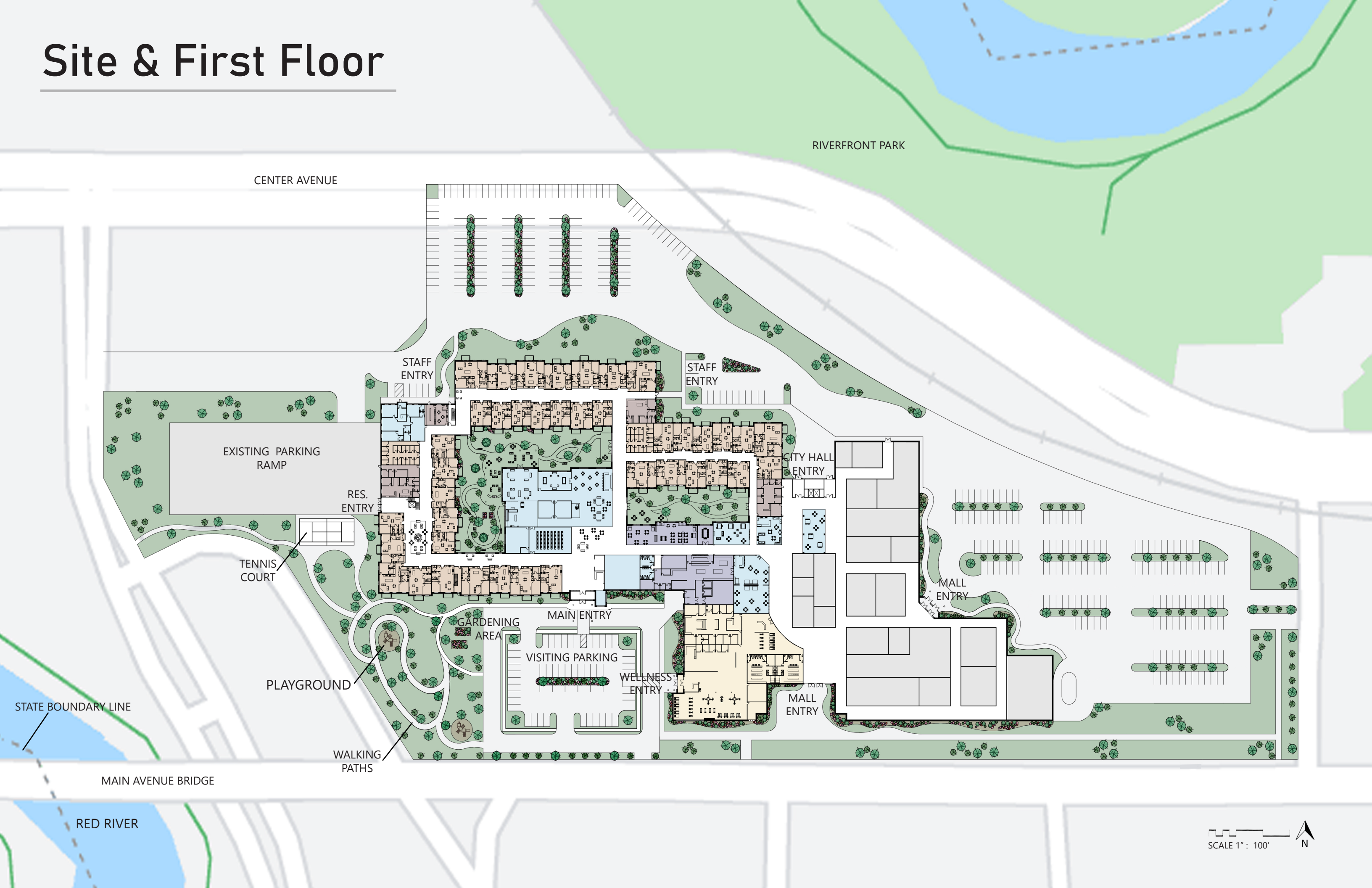


Existing North Elevation



North Elevation

Site & First Floor



CENTER AVENUE

RIVERFRONT PARK

STAFF ENTRY

STAFF ENTRY

EXISTING PARKING RAMP

RES. ENTRY

CITY HALL ENTRY

TENNIS COURT

MALL ENTRY

PLAYGROUND

GARDENING AREA

MAIN ENTRY

VISITING PARKING

WELLNESS ENTRY

MALL ENTRY

STATE BOUNDARY LINE

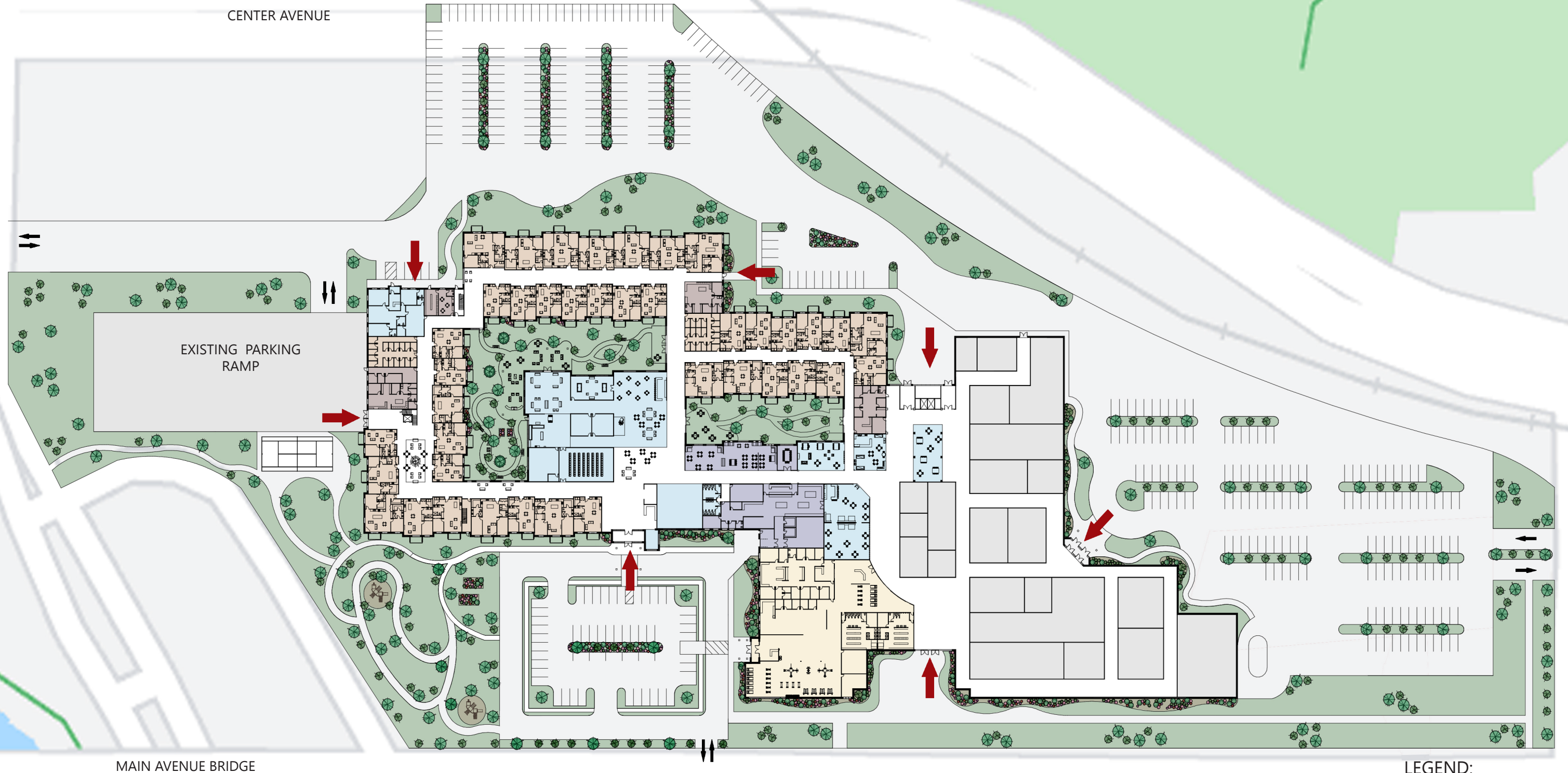
WALKING PATHS

MAIN AVENUE BRIDGE

RED RIVER

SCALE 1" : 100' N

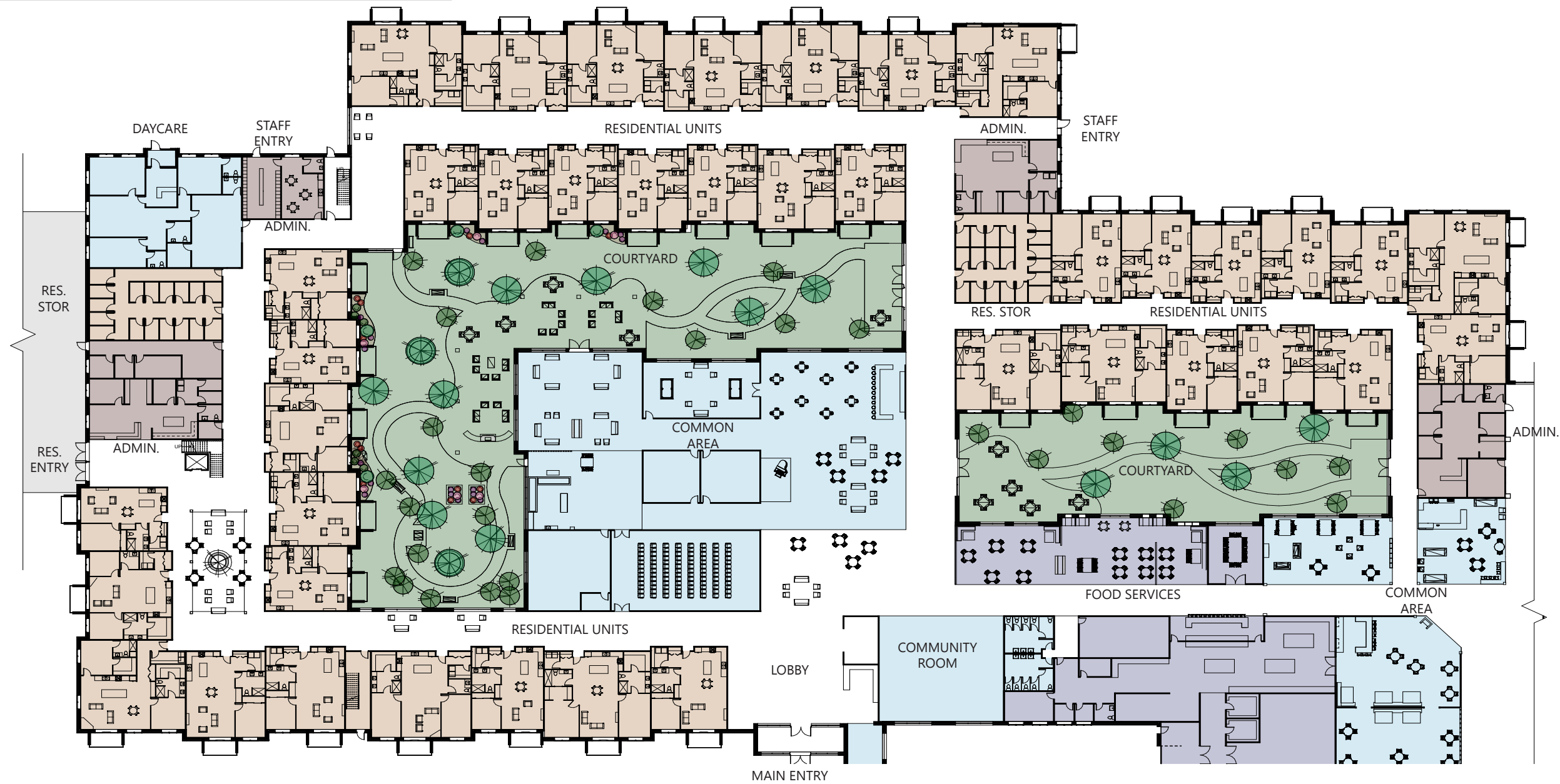
Circulation



LEGEND:

- ↕ VEHICULAR
- ➔ PEDESTRIAN
- SCALE 1" : 100'
- N

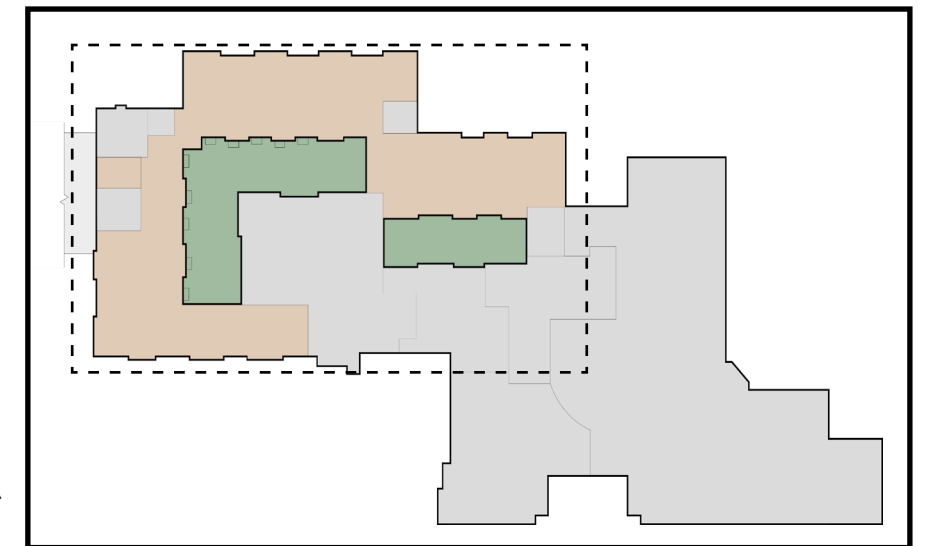
Residential



LEGEND:

- RESIDENTIAL
- ADMINISTRATION
- HEALTH SERVICES
- COMMON AREA
- FOOD SERVICES
- COURTYARD
- RETAIL

SCALE 1" : 45'





Apartment

Administration

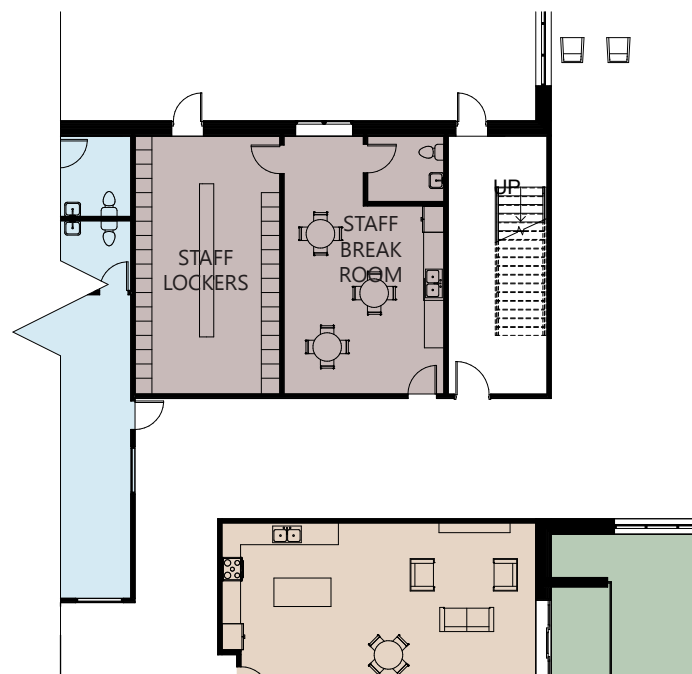
1) Main Administration



2) Nurse Station

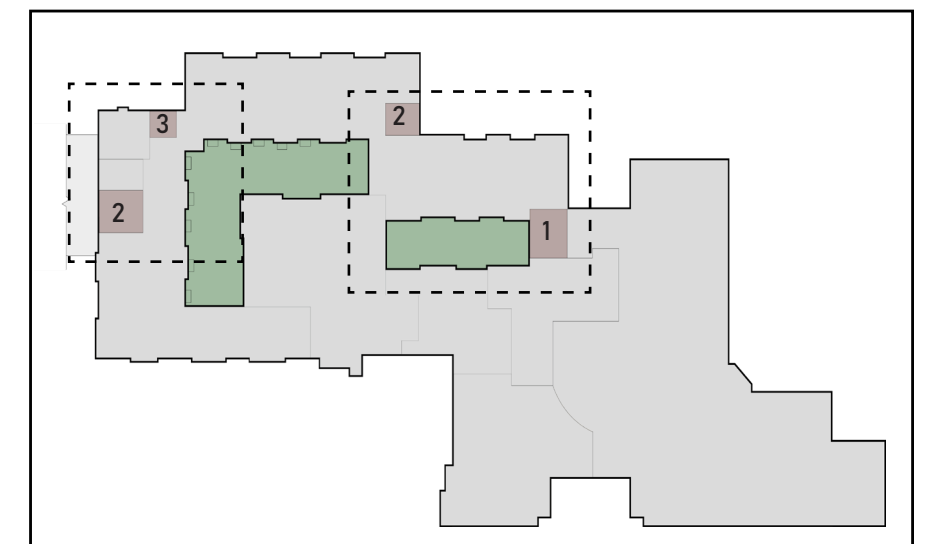


3) Staff Area

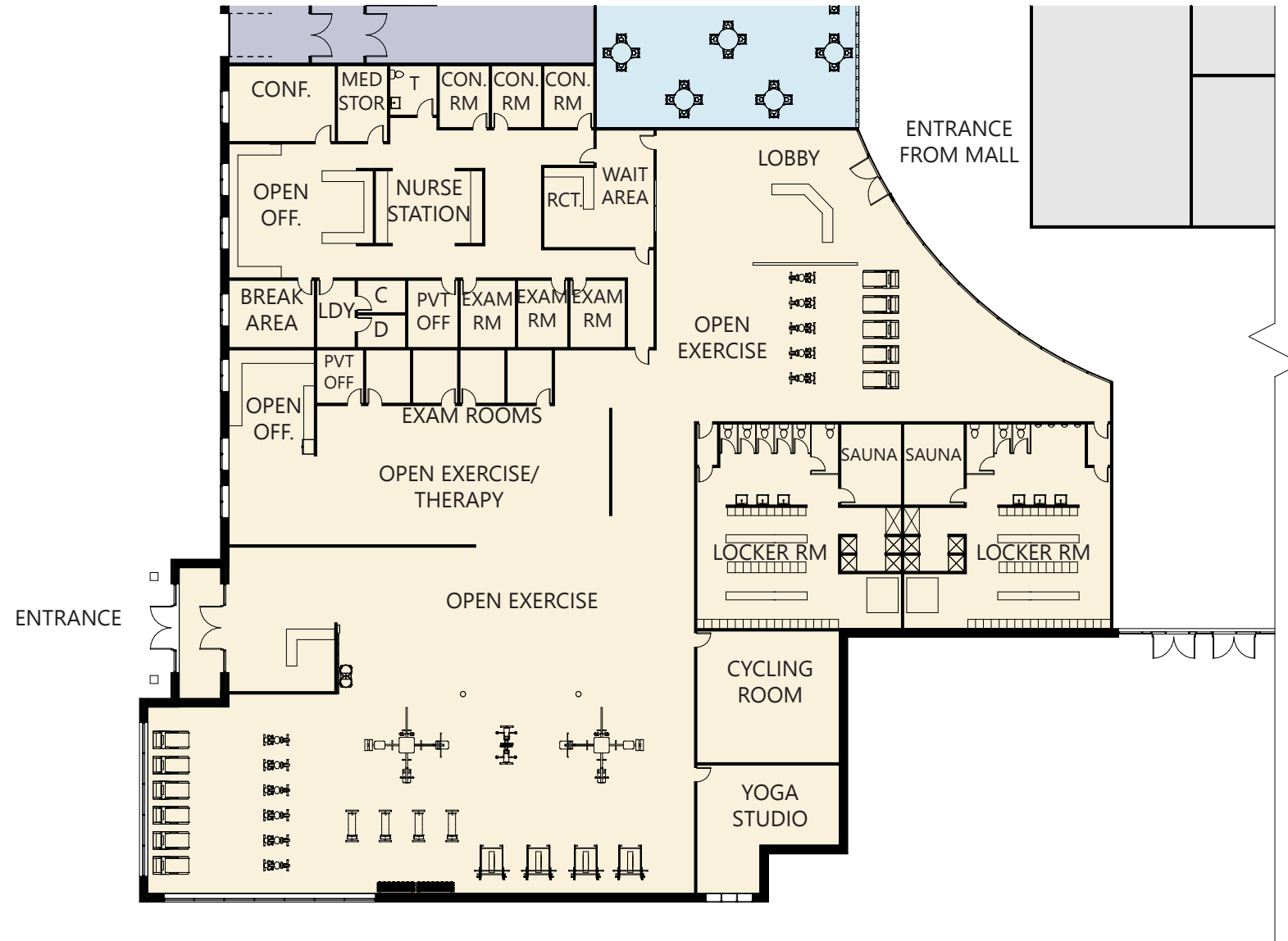


- LEGEND:
- RESIDENTIAL
 - ADMINISTRATION
 - HEALTH SERVICES
 - COMMON AREA
 - FOOD SERVICES
 - COURTYARD
 - RETAIL

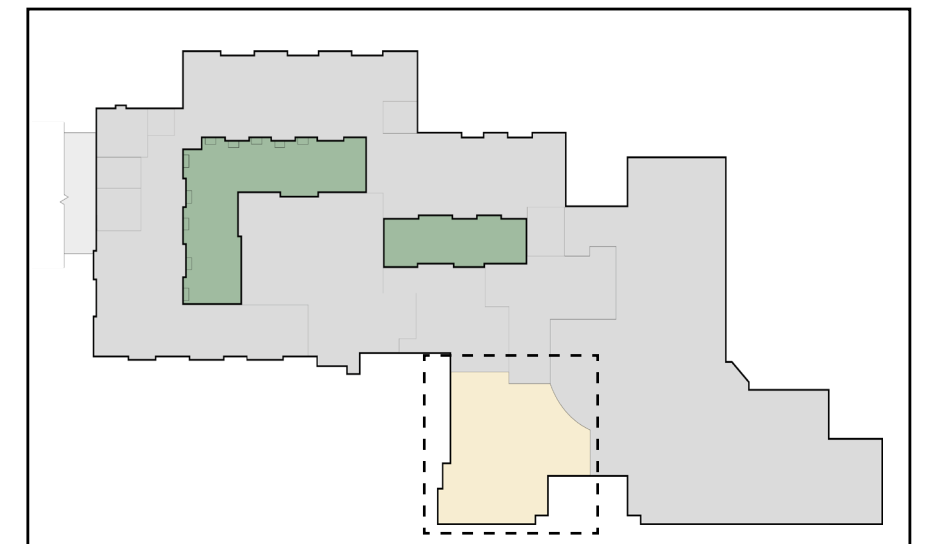
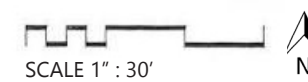
SCALE 1" : 20'



Health Services



- LEGEND:
- RESIDENTIAL
 - ADMINISTRATION
 - HEALTH SERVICES
 - COMMON AREA
 - FOOD SERVICES
 - COURTYARD
 - RETAIL





Wellness Center

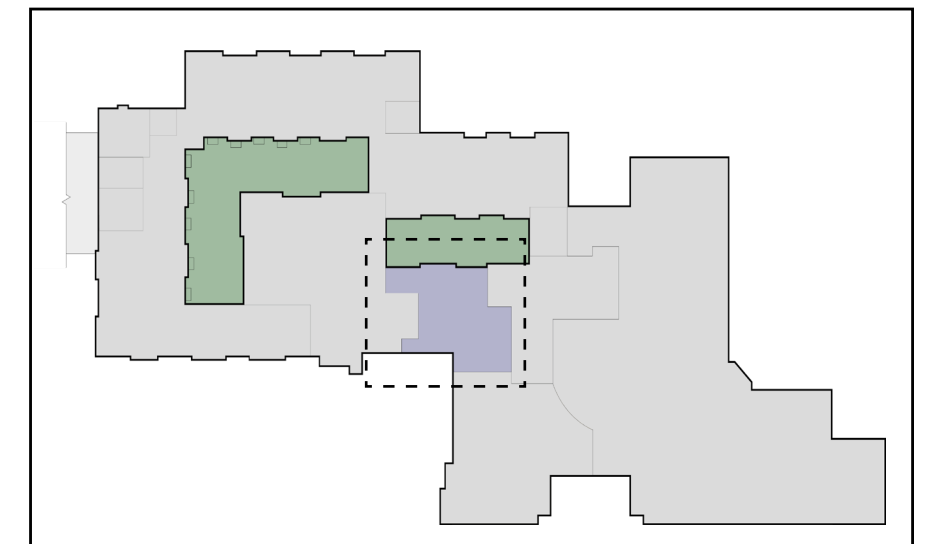
Food Services



LEGEND:

- RESIDENTIAL
- ADMINISTRATION
- HEALTH SERVICES
- COMMON AREA
- FOOD SERVICES
- COURTYARD
- RETAIL

SCALE 1" : 30'

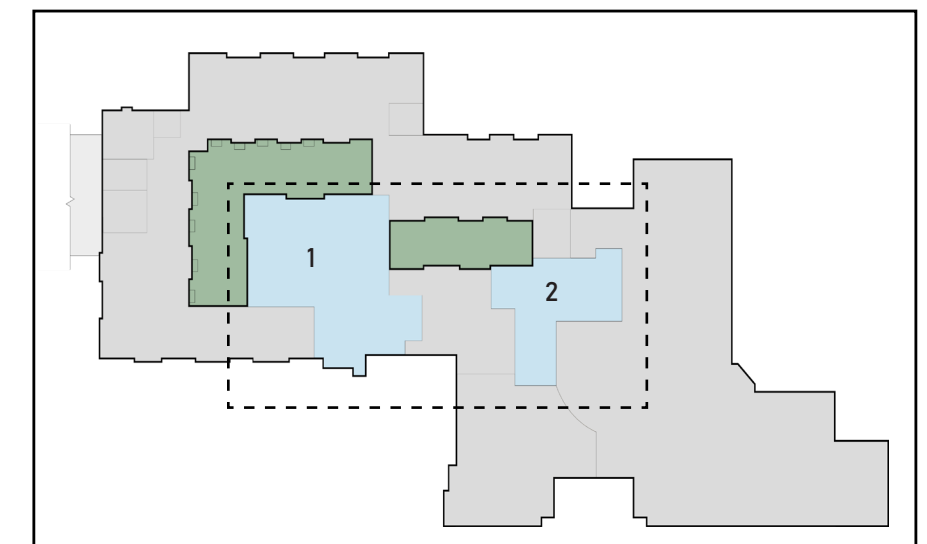
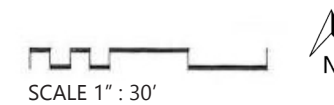


Common Space



LEGEND:

- RESIDENTIAL
- ADMINISTRATION
- HEALTH SERVICES
- COMMON AREA
- FOOD SERVICES
- COURTYARD
- RETAIL



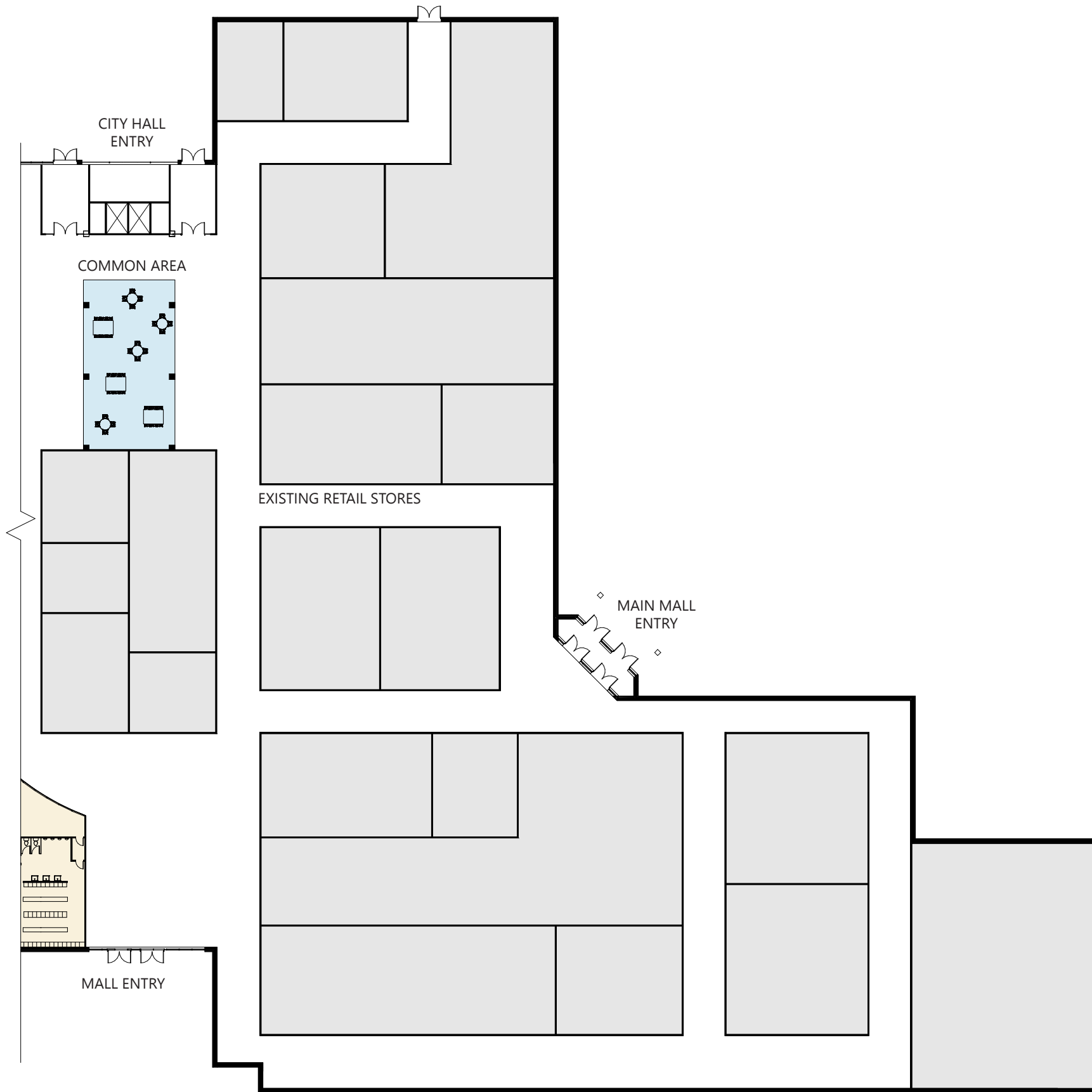


Interior Green Atrium



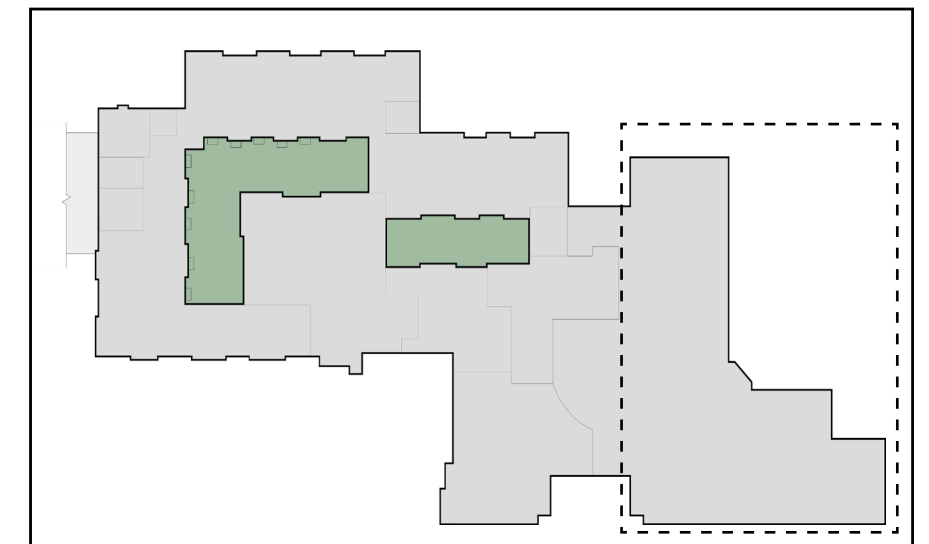
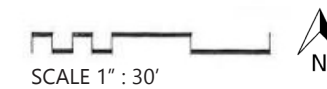
Residential and Retail Connection

Retail

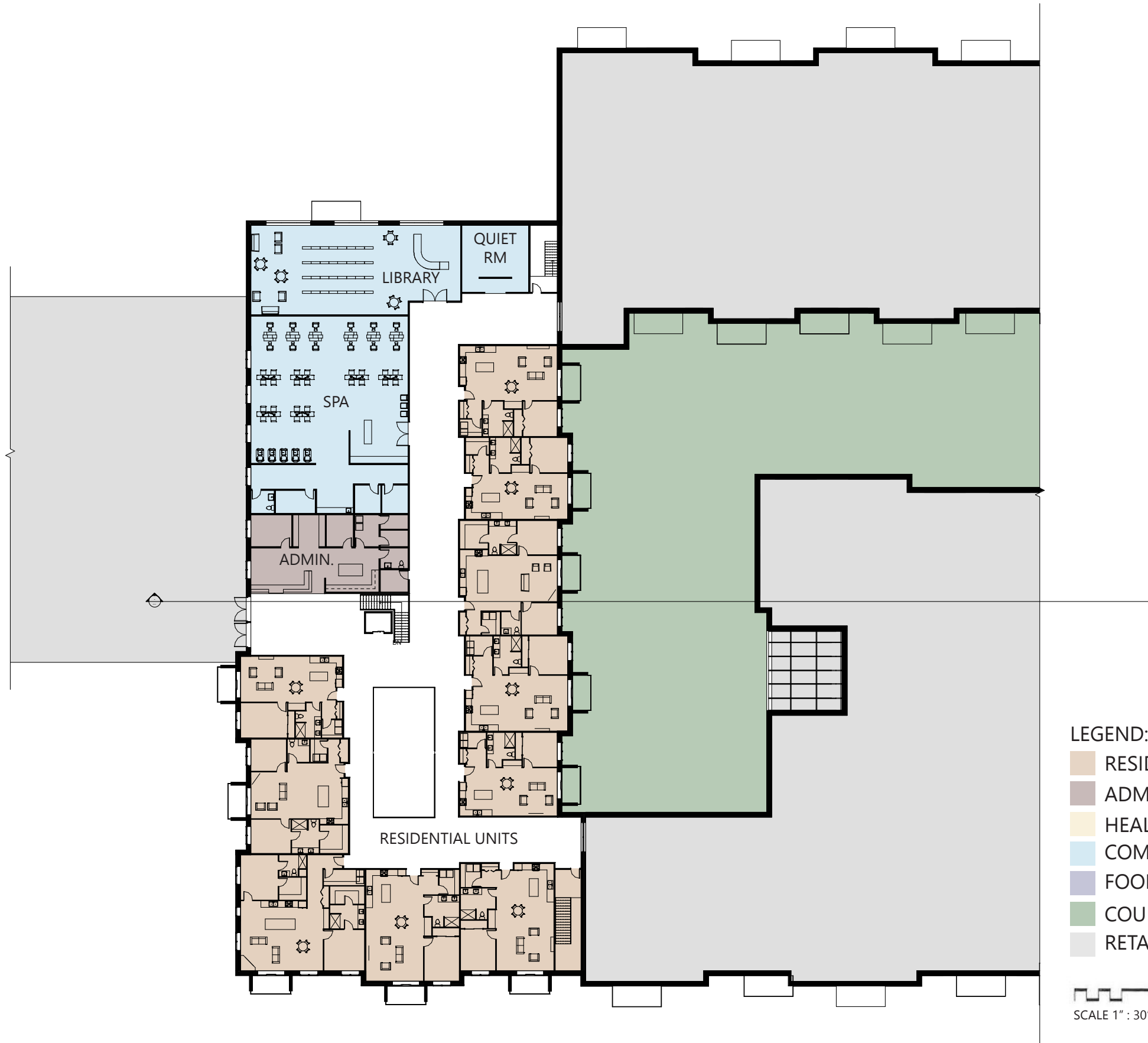


LEGEND:

- RESIDENTIAL
- ADMINISTRATION
- HEALTH SERVICES
- COMMON AREA
- FOOD SERVICES
- COURTYARD
- RETAIL

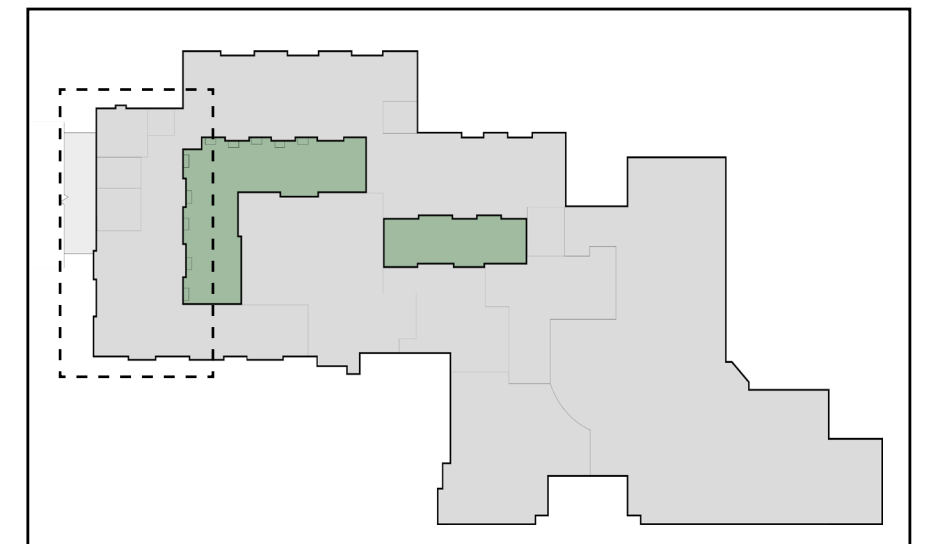


Second Floor

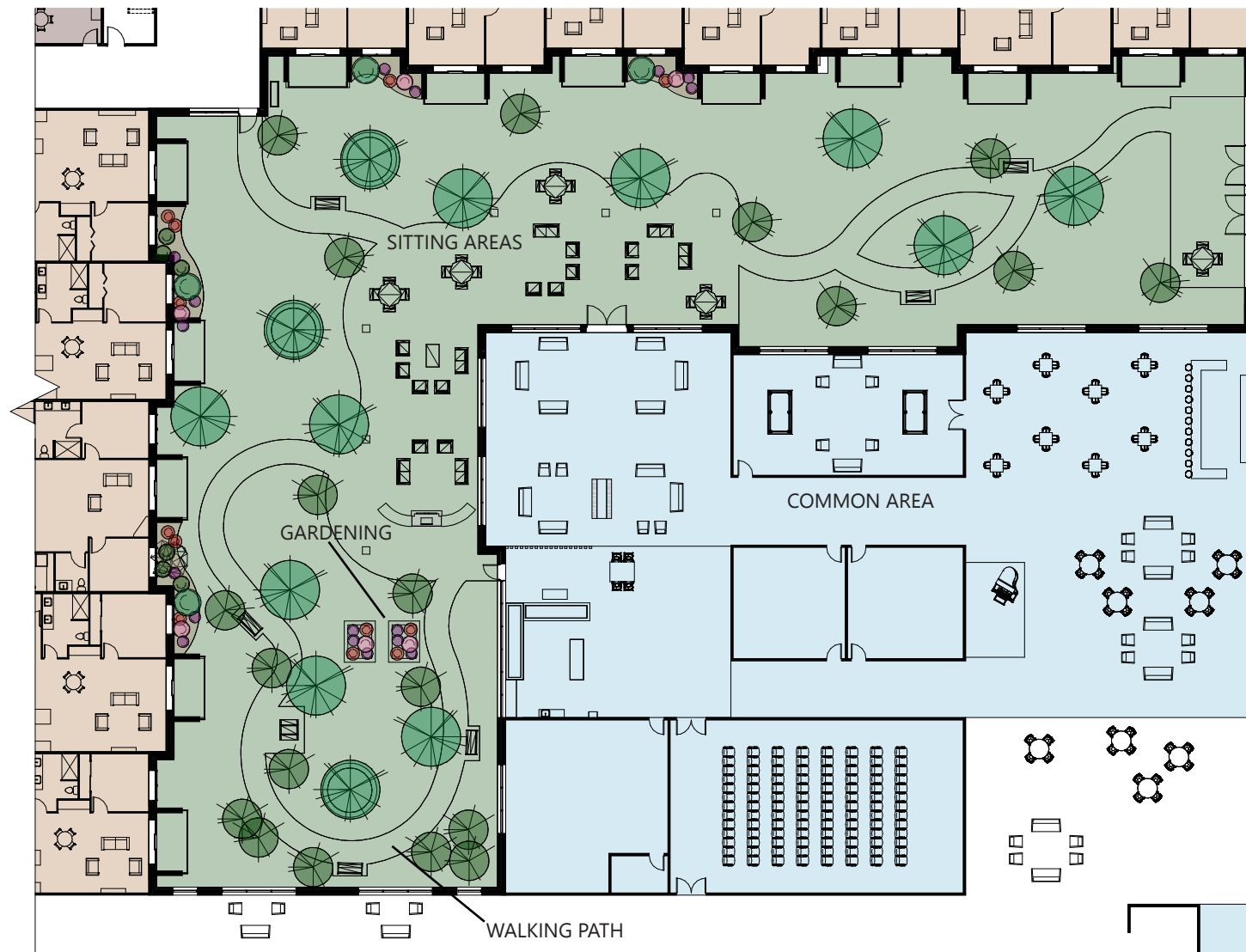


- LEGEND:
- RESIDENTIAL
 - ADMINISTRATION
 - HEALTH SERVICES
 - COMMON AREA
 - FOOD SERVICES
 - COURTYARD
 - RETAIL

SCALE 1" : 30'

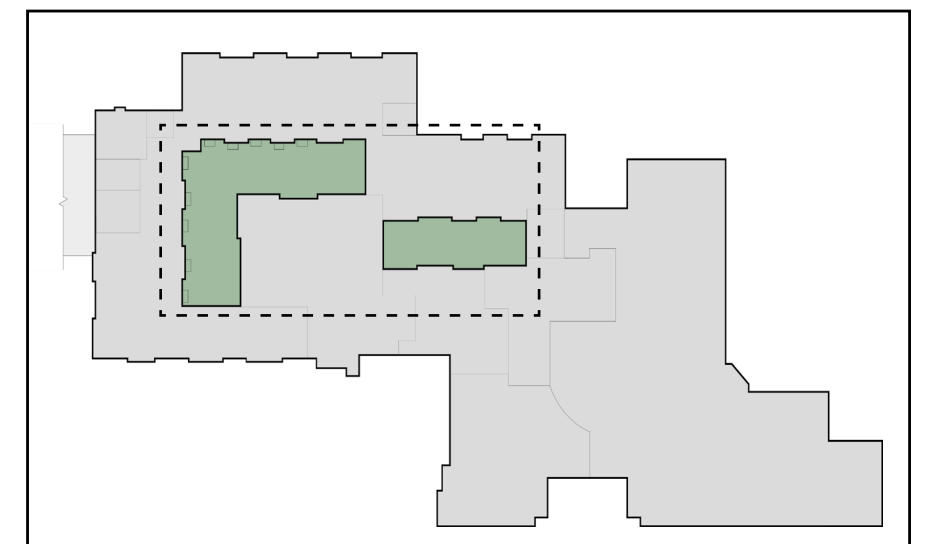
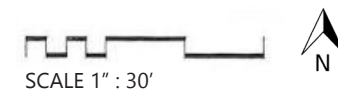


Courtyards



LEGEND:

- RESIDENTIAL
- ADMINISTRATION
- HEALTH SERVICES
- COMMON AREA
- FOOD SERVICES
- COURTYARD
- RETAIL



Section Cut





Courtyard



THANK YOU.