



# Healthy Building Healthy Living

---

Ryan Friesen



# Abstract

Problem

Covid

Potential

Capacity

Purpose

Revitalize

Product

Solution

# Question/Project Elements

---

Question: How can the interconnection of contrasting typologies of a mixed use skyscraper revitalize and expedite quality of life post pandemic?

## 1. Urban Environment

- Urban connective plan that is smart, social, and fuses with the community

## 2. Architectural Design

- Design that is sustainable, durable, and technologically advanced

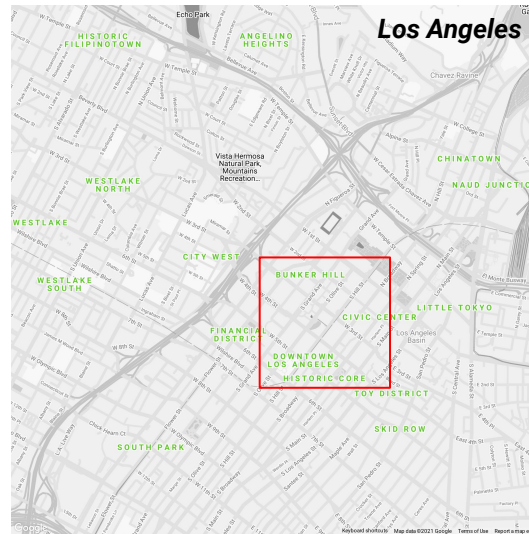
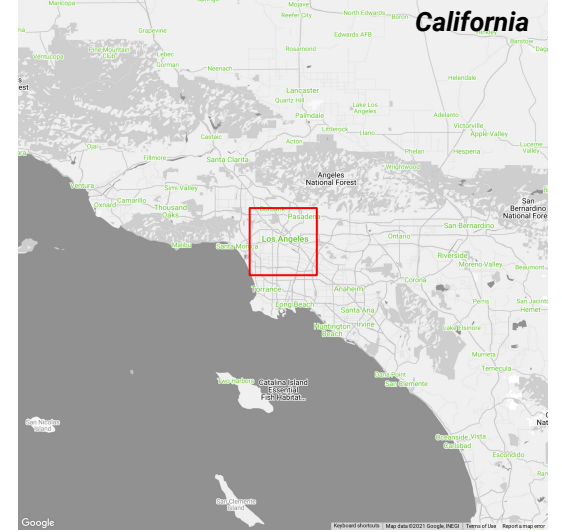
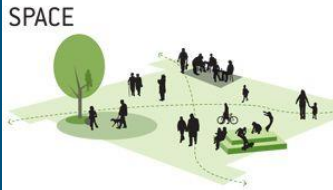
## 3. Physical Spatial Connections

- Taking components that make a city inspiring and interconnecting them within a singular structure

Urban connective plan that is smart, social, and fuses with the community

# Urban Environment

- Location



Urban connective plan that is smart, social, and fuses with the community

# Urban Environment

- Angels Knoll



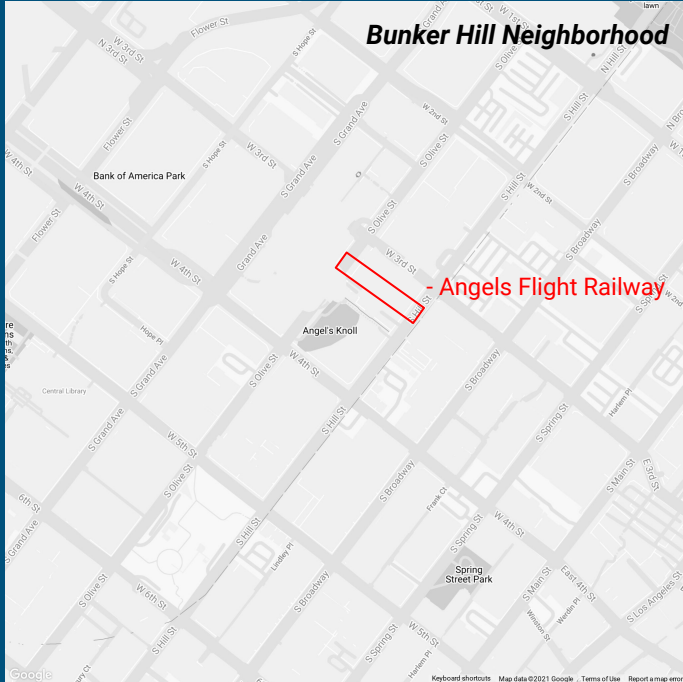
## Bunker Hill Neighborhood



Urban connective plan that is smart, social, and fuses with the community

# Urban Environment

- Angels Flight Railway



**1901**  
Original Angels Flight opens

**1969**  
Shuts down due to redevelopment

**1996**  
Opens in new location

**2001**  
Closes after a fatal accident

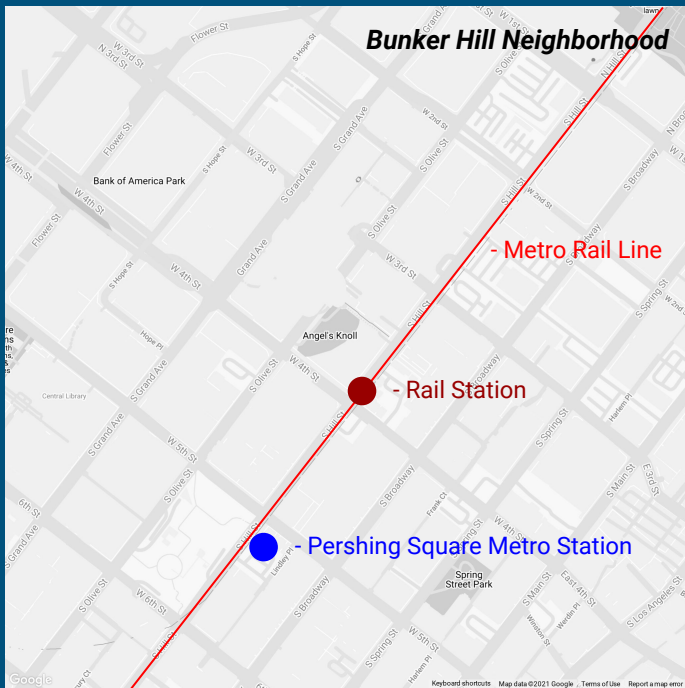
**2010-2014** Reopens and recloses multiple times until it closes indefinitely in '14  
**2017** Plans to reopen announced



Urban connective plan that is smart, social, and fuses with the community

# Urban Environment

- Pershing Square Metro Station & Rail Stop



## Bunker Hill Neighborhood

- Metro Rail Line

- Rail Station

- Pershing Square Metro Station

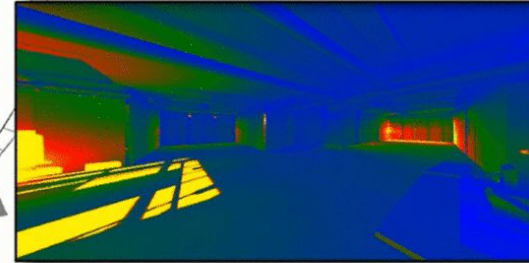
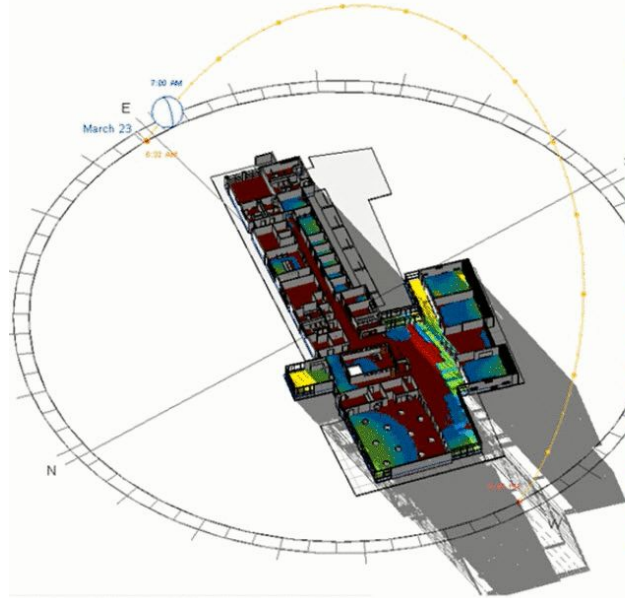
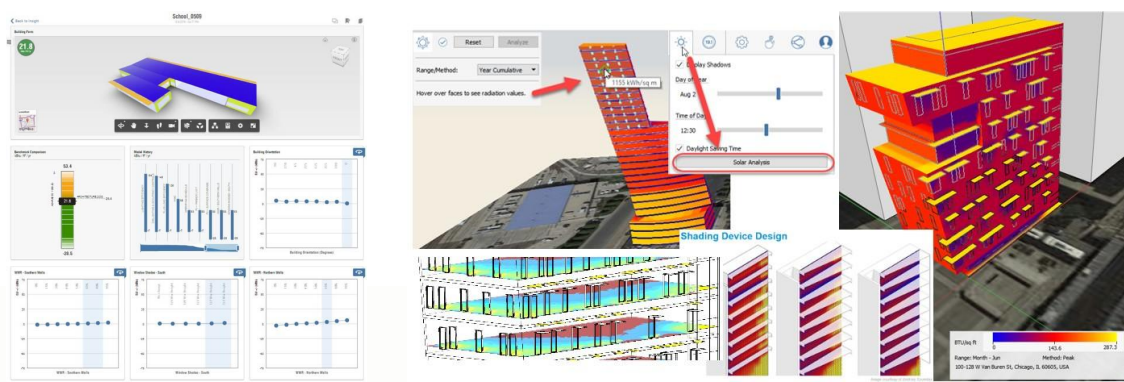
Design that is sustainable, durable, and technologically advanced

# Architectural Design

- Technological Advancements

## Potential Software

- Insight - Autodesk





Taking components that make a city inspiring and interconnecting them within a singular structure

# Physical Spatial Connections

- Interconnecting Components

What makes a city inspiring?

- Building for People
- Open Spaces
- Green Infrastructure



## THE BENEFITS OF GREAT PLACES



Taking components that make a city inspiring and  
interconnecting them within a singular structure

# Physical Spatial Connections

- Building for People

## Connected spaces for people and nature



Taking components that make a city inspiring and  
interconnecting them within a singular structure

# Physical Spatial Connections

- Open Spaces

## Connected spaces for people and nature



## THE BENEFITS OF GREAT PLACES

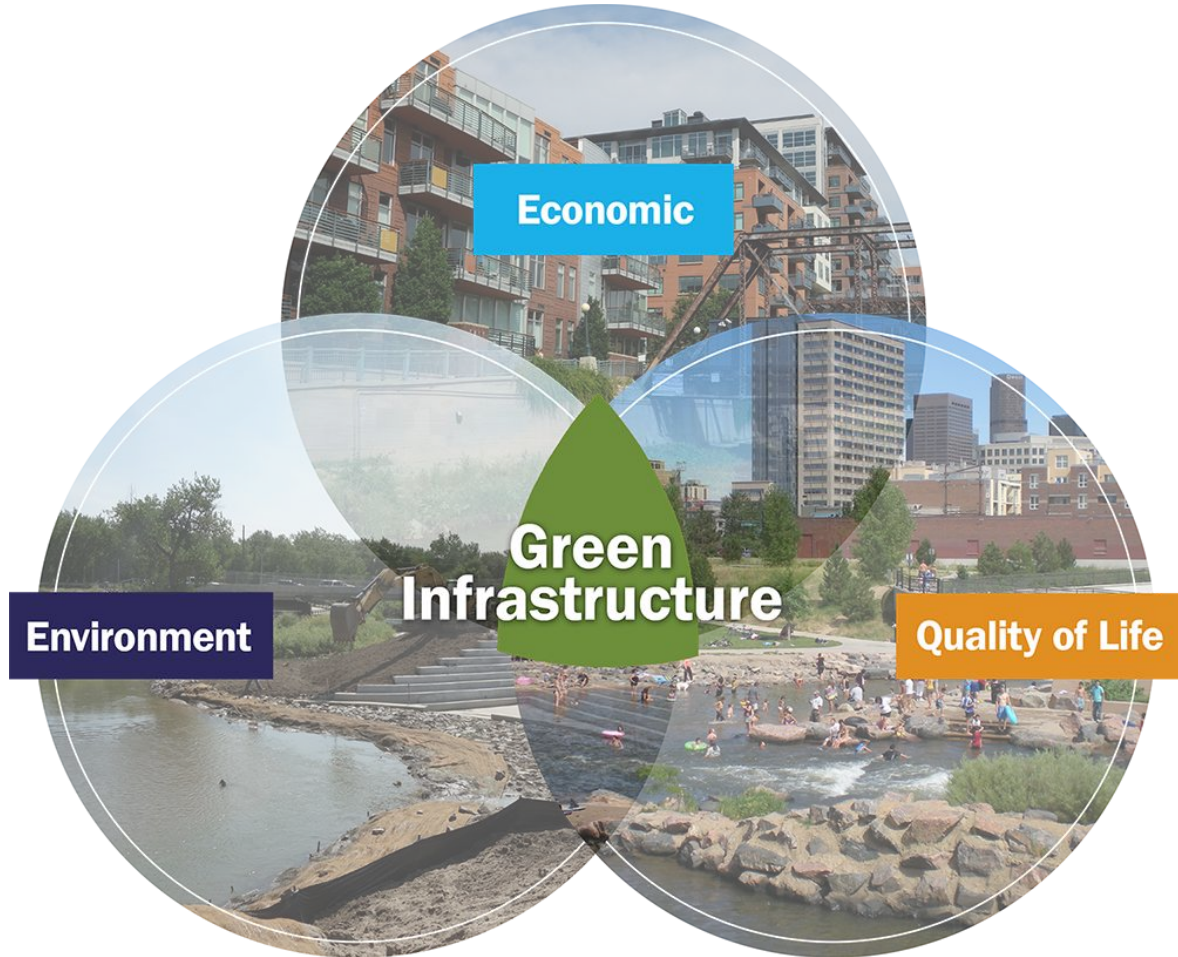


Taking components that make a city inspiring and  
interconnecting them within a singular structure

# Physical Spatial Connections

- Green Infrastructure

Connected spaces for people and nature



# Question/Project Elements

---

Question: How can the interconnection of contrasting typologies of a mixed use skyscraper revitalize and expedite quality of life post pandemic?

## 1. Urban Environment

- Urban connective plan that is smart, social, and fuses with the community

## 2. Architectural Design

- Design that is sustainable, durable, and technologically advanced

## 3. Physical Spatial Connections

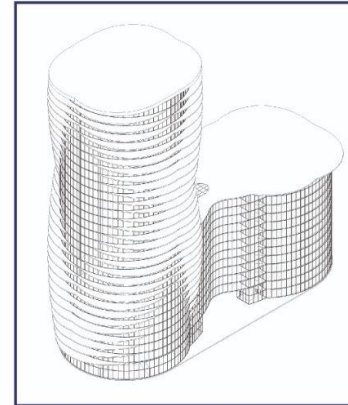
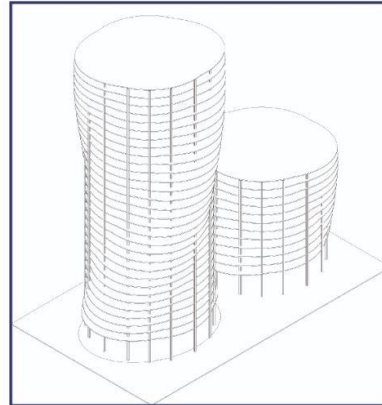
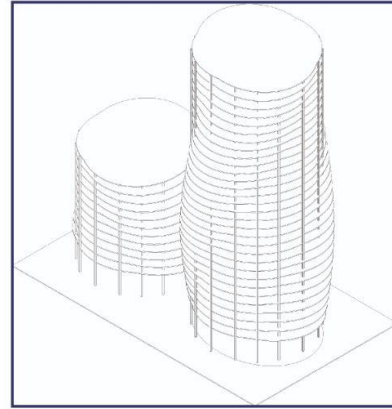
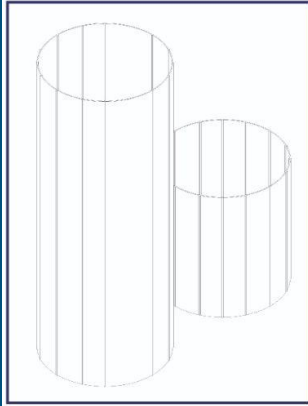
- Taking components that make a city inspiring and interconnecting them within a singular structure



# **Angels Ascent**

# Conceptualization: Sinai & Olivet

Place conceptual  
orthographic view here that  
will be used in future slides to  
show spaces in building and  
movement through spaces



# Program/Users

## Primary Program Typologies:

1. Plaza .....> Social
2. Education .....> Learning
3. Office .....> Work
4. Housing/Apartments ..> Living
5. Shared Facilities .....> ??????

## User Groups:

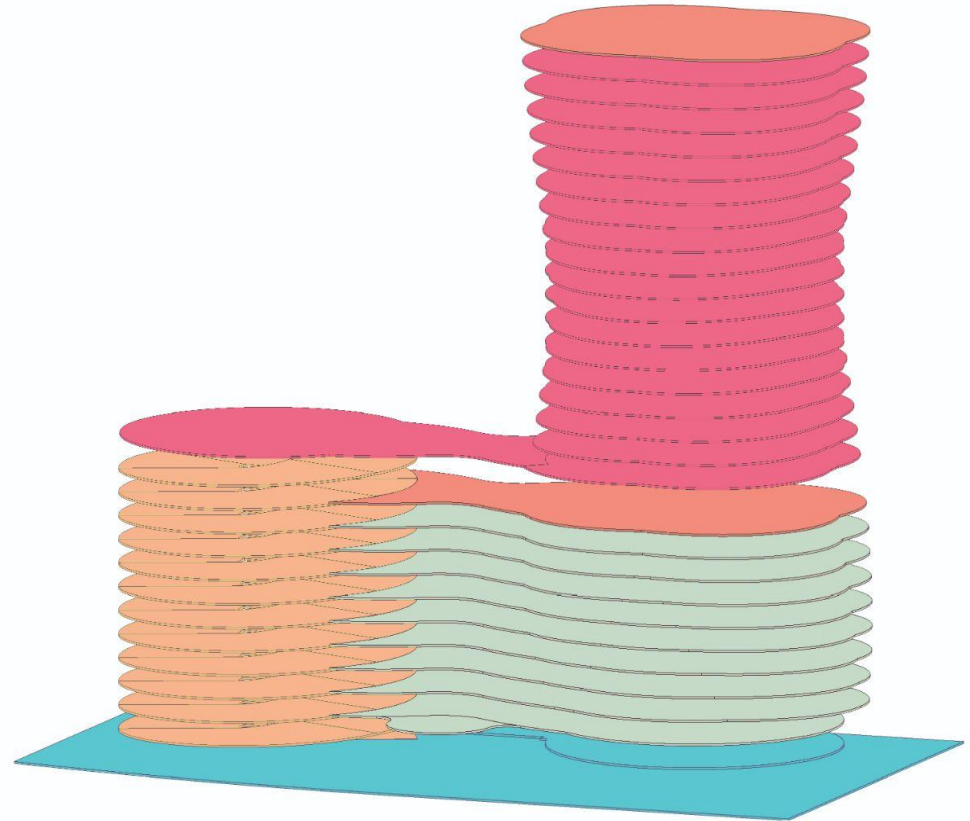
- Los Angeles community
- Students and Educators
- General Public

PROGRAMMING

ORGANI

TIAL

ICAL





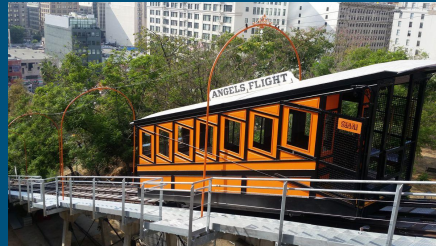
# Public Plaza - Angels Ascent Plaza

Plaza for Angels Ascent

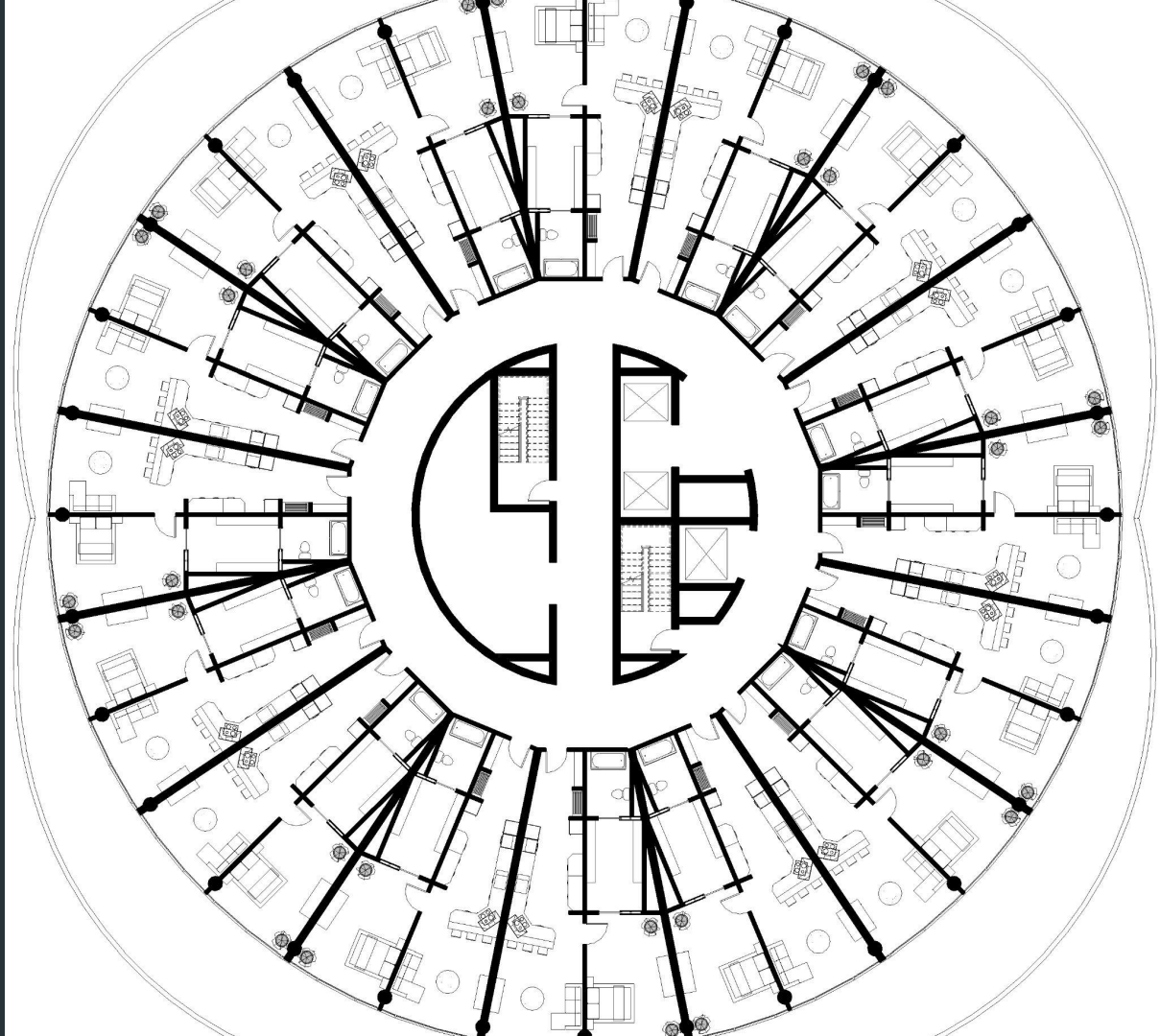


# Plaza Features:

- Publicly Accessible Open Space
  - Encourages Walking
- Angels Flight Monument
  - Honors Angels Flight
- Food Court
  - Accessible for all
- Elevated Terrace
  -
- Rail Line Connection
  -



# 1st Floor Plan



# Publicly Accessible Open Space



Public Space for Socialization



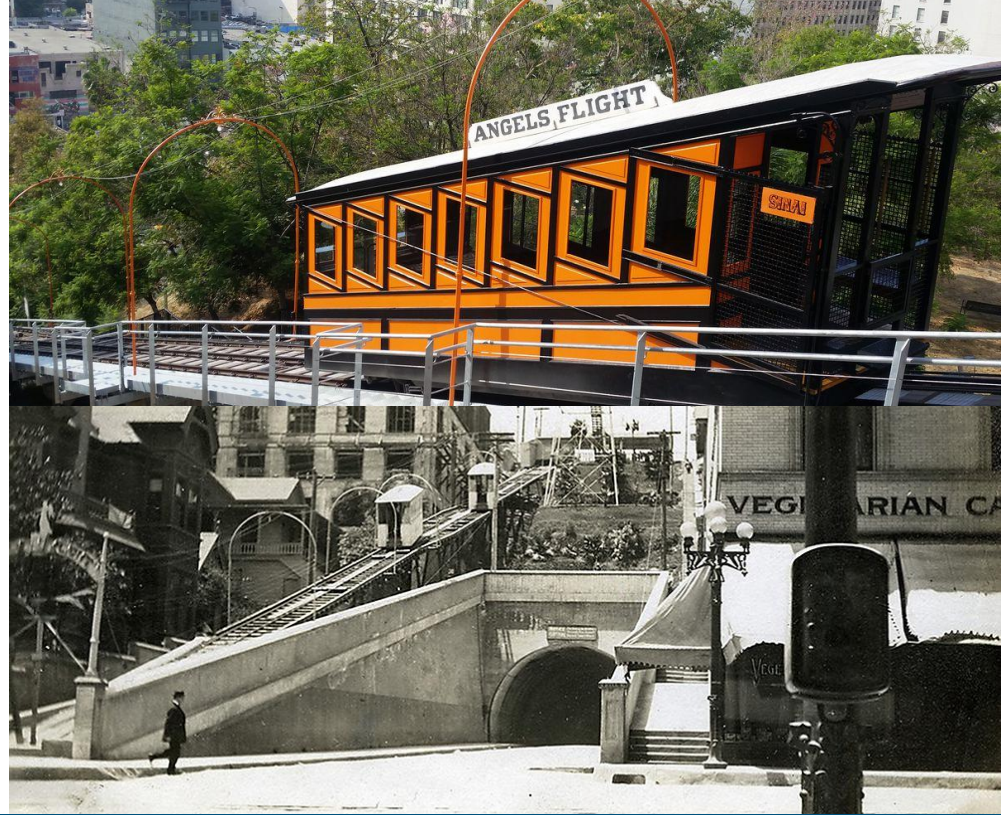
# Publicly Accessible Open Space

Space for Socialization

Text Here

Text Here

# Angels Flight Monument



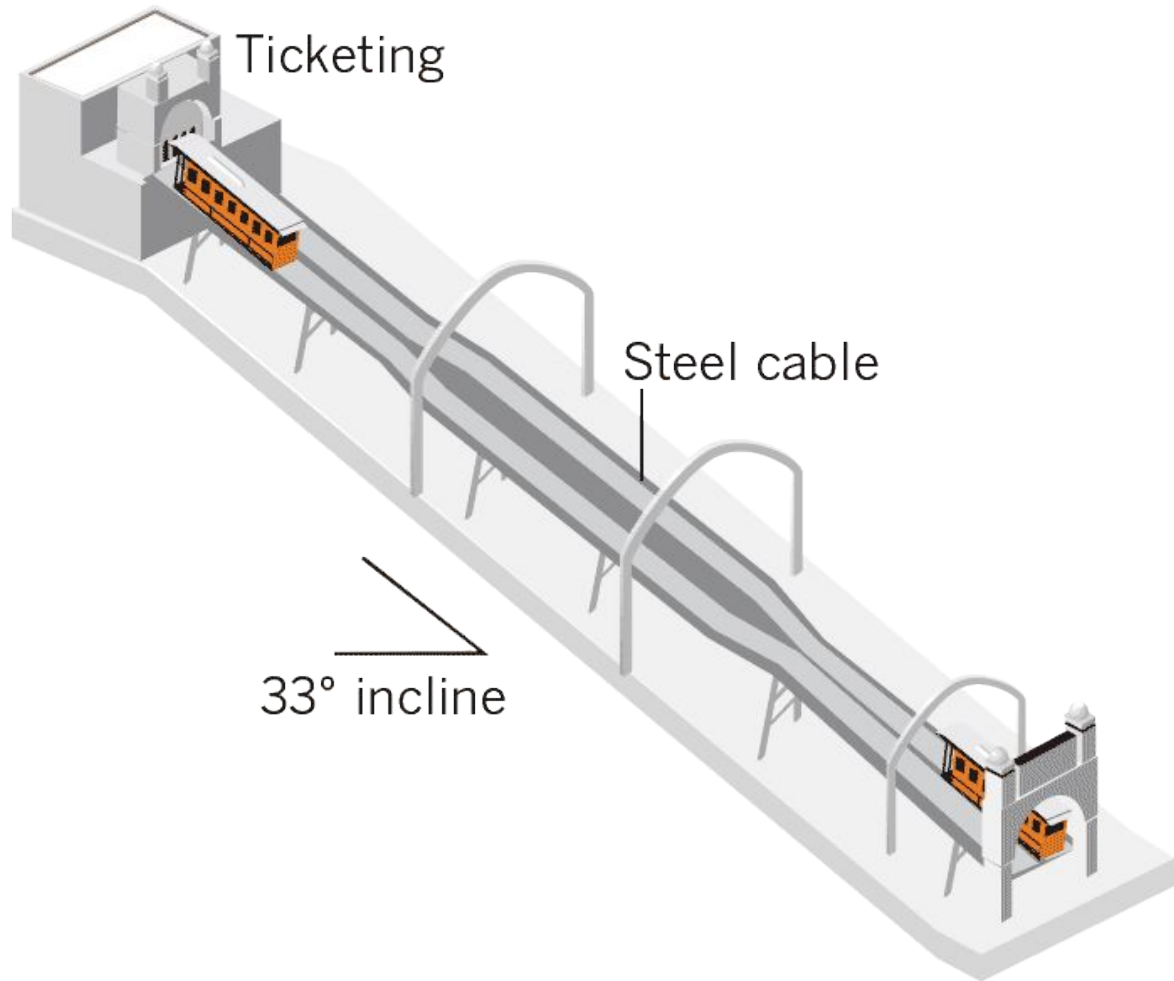
Monument to Honor Angels Flight

# Angels Flight Monument

Monument to Honor Angels Flight

Text Here

Text Here



# Rail Line Connection



A Connection to the Public



# Rail Line Connection

A Connection to the Public

## MAP NOTES

- 1 Universal Studios/City Walk
- 2 John Anson Ford Theater
- 3 Hollywood Bowl
- 4 TCL Chinese Theatre
- 5 Hollywood & Highland Center
- 6 El Capitan Theater
- 7 Pantages Theater
- 8 Barnsdall Park
- 9 Kaiser LA Medical Center - Hollywood
- 10 Children's Hospital of Los Angeles
- 11 Queen of the Angels Hollywood Presbyterian Medical Center
- 12 Los Angeles City College
- 13 Braille Institute
- 14 Wiltern Theatre
- 15 Lafayette Park
- 16 MacArthur Park
- 17 Good Samaritan Hospital
- 18 Los Angeles Convention Center
- 19 Crypto.com Arena
- 20 Music Center
- 21 Los Angeles City Hall
- 22 El Pueblo de Los Angeles
- 23 Patsoura Transit Plaza
- 24 Japanese American National Museum
- 25 Disney Concert Hall
- 26 Museum of Contemporary Art (MOCA)
- 27 LA County Main Jail

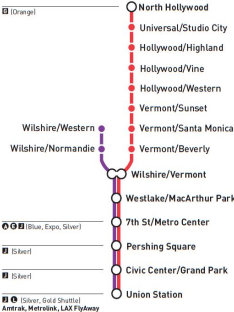
Effective Feb 20 2022

**B** **D**  
**B Line (Red)**  
**D Line (Purple)**

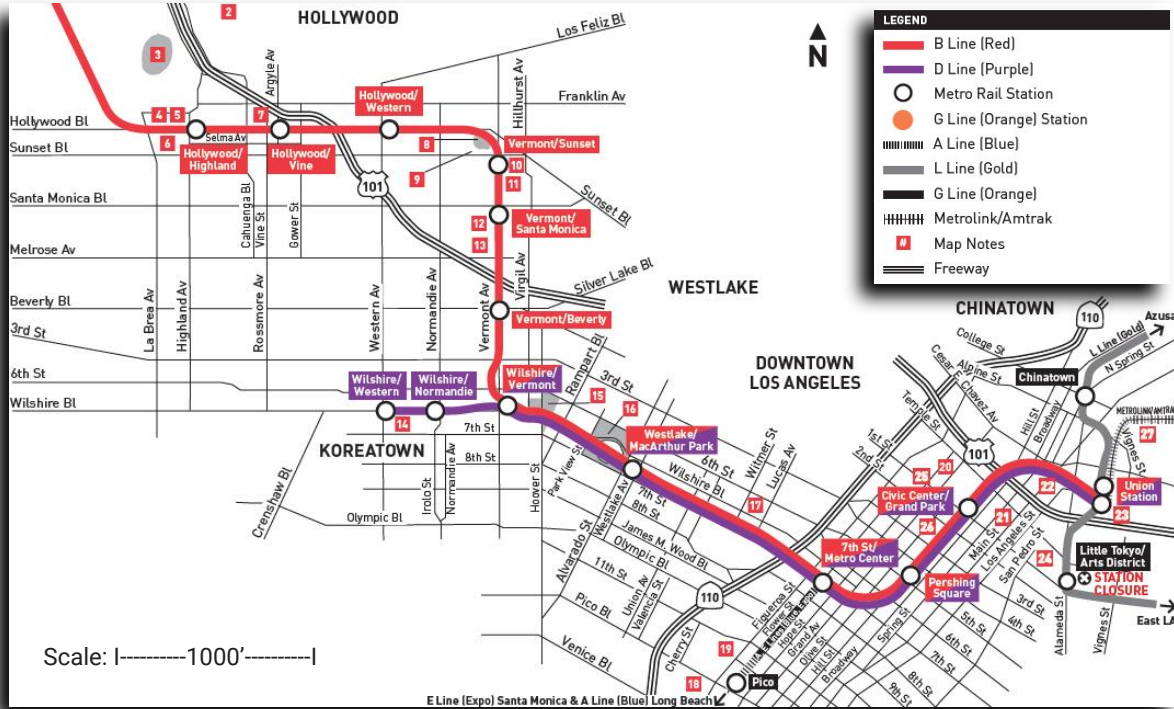
Metro Rail

Union Station - North Hollywood  
 Union Station - Wilshire/Western

metro.net 323.60.METRO  
 Travel Info 511  
 California Relay Service 711



Subject to change without notice  
 Sujeto a cambios sin previo aviso



**LEGEND**

- B Line (Red)
- D Line (Purple)
- Metro Rail Station
- G Line (Orange) Station
- ▬ A Line (Blue)
- ▬ L Line (Gold)
- ▬ G Line (Orange)
- ▬▬▬▬ Metrolink/Amtrak
- Map Notes
- ▬▬▬▬ Freeway

Scale: |-----1000'-----|

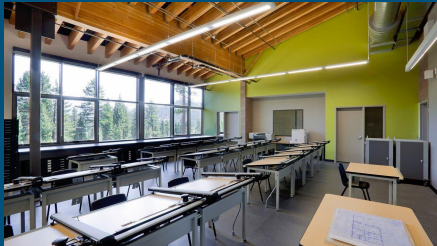
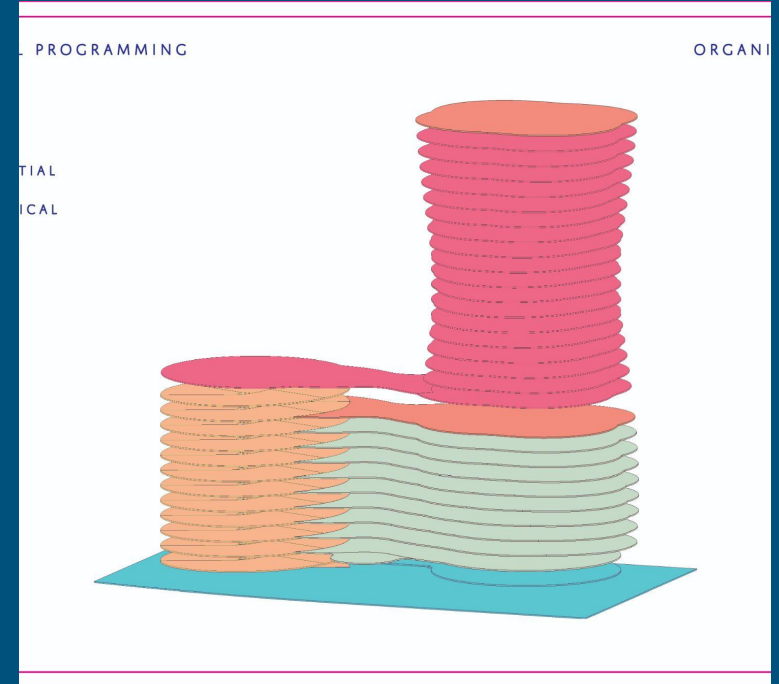
# Education - Los Angeles City College (LACC)

Extension for LACC



# School Incorporations/Facilities:

- Rail Line for Transportation
- Architecture program
- Nursing program
- 
- 
- 



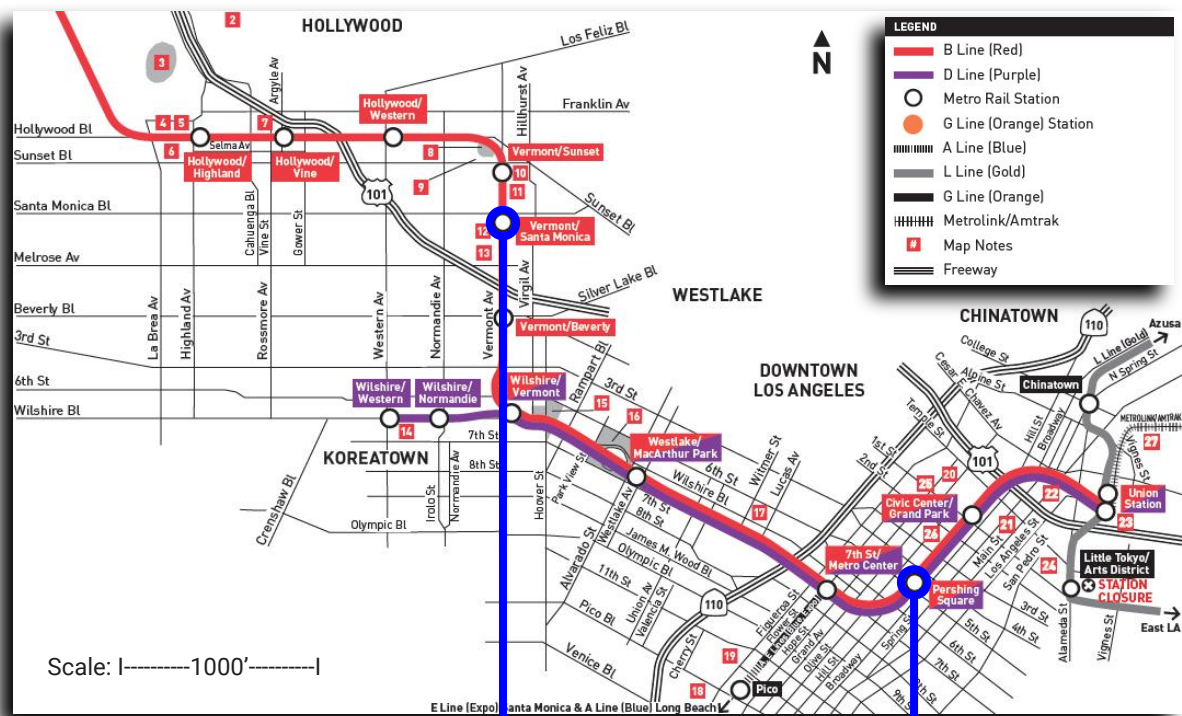
# Rail Line Connection

A Connection to Education

B Line (Red) Schedule -  
Weekday/Weekend

Vermont/Santa Monica → Angels Ascent

- 30 minute Commute
- Schedule: 4:10 am - 12:30 am



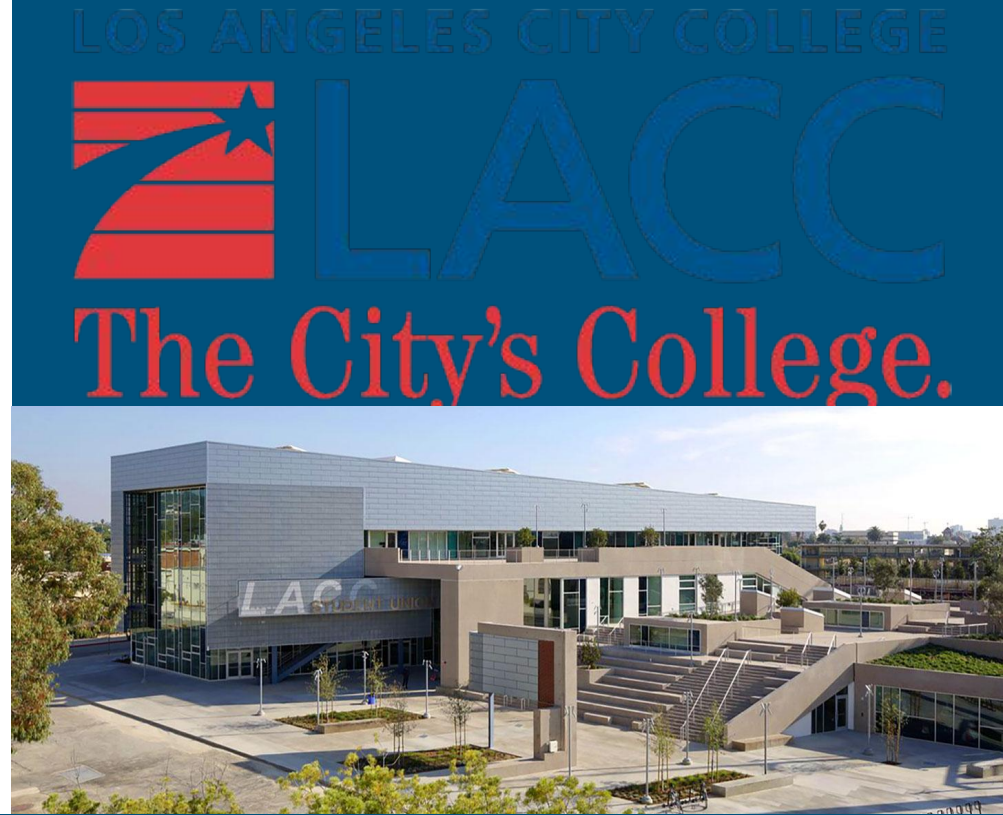
Vermont/Santa  
Monica

Angels Knoll

# Education - Floor Plan



# Program Type #1



Slogan for the schools program



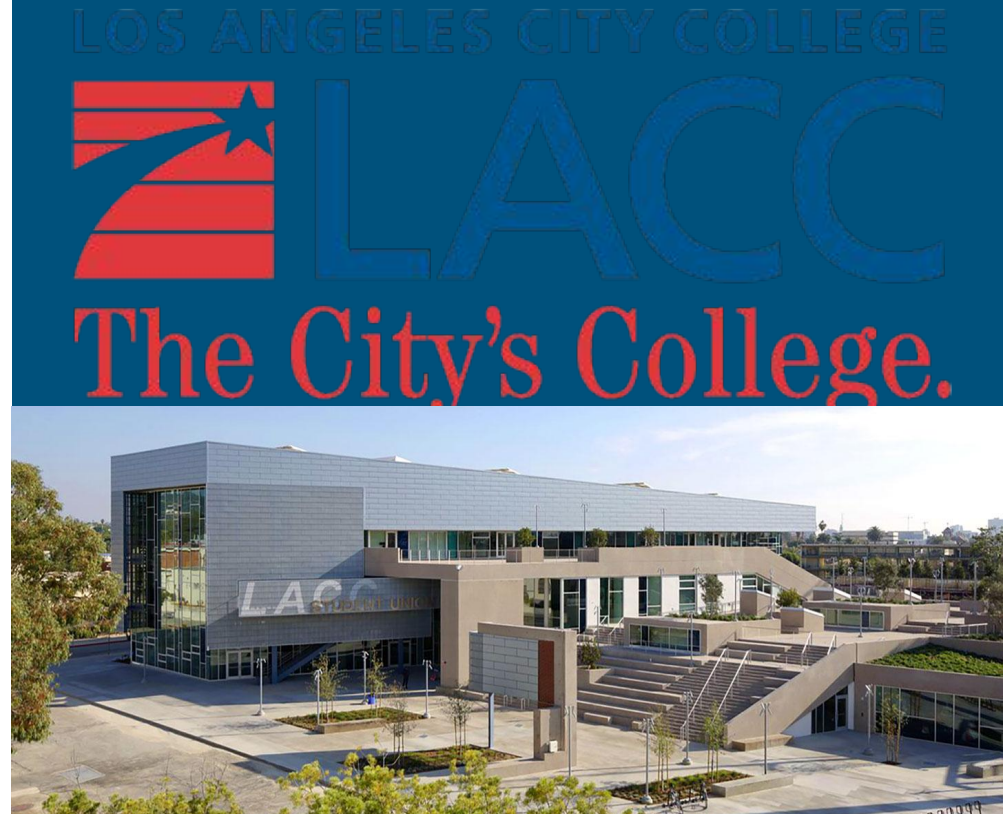
# Program Type #1

Slogan for the schools Program

Text Here

Text Here

## Program Type #2



Slogan for the schools program





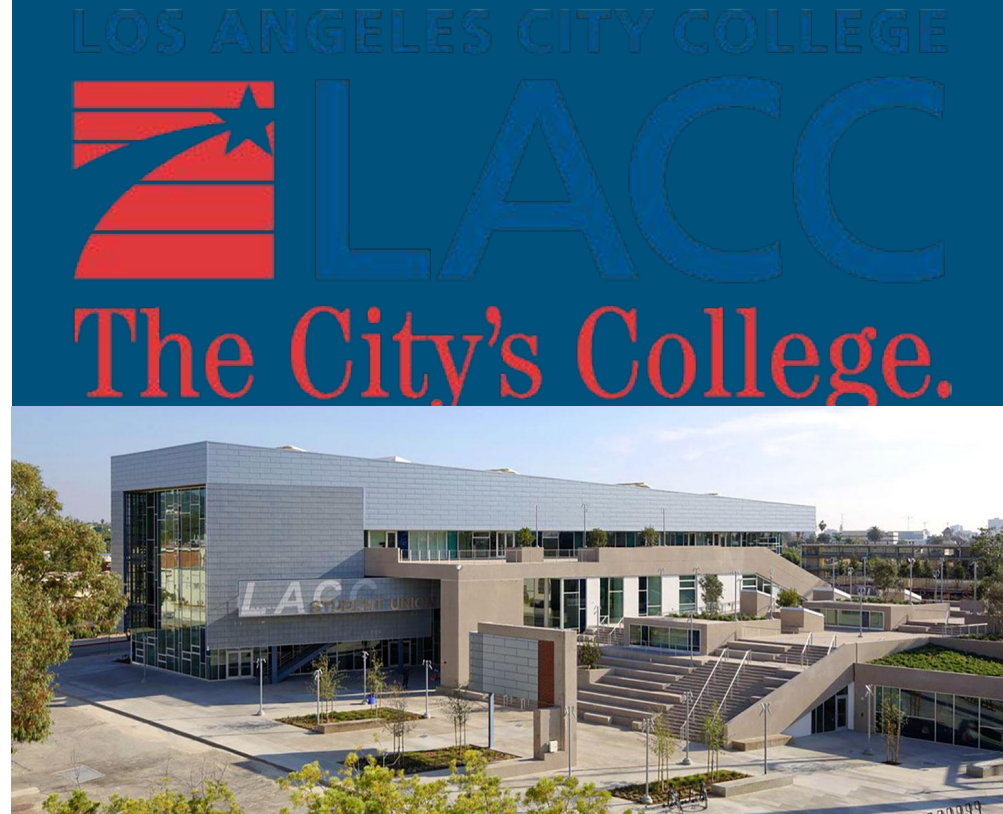
# Program Type #2

Slogan for the schools Program

Text Here

Text Here

# Program Type #3



Slogan for the schools program



# Program Type #3

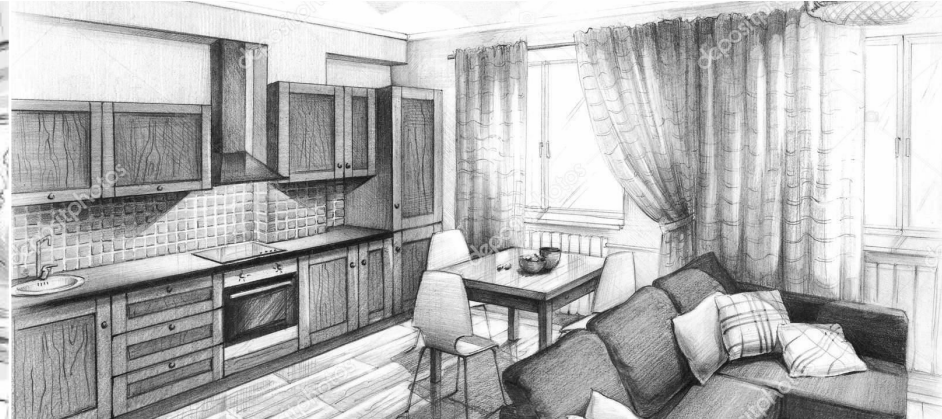
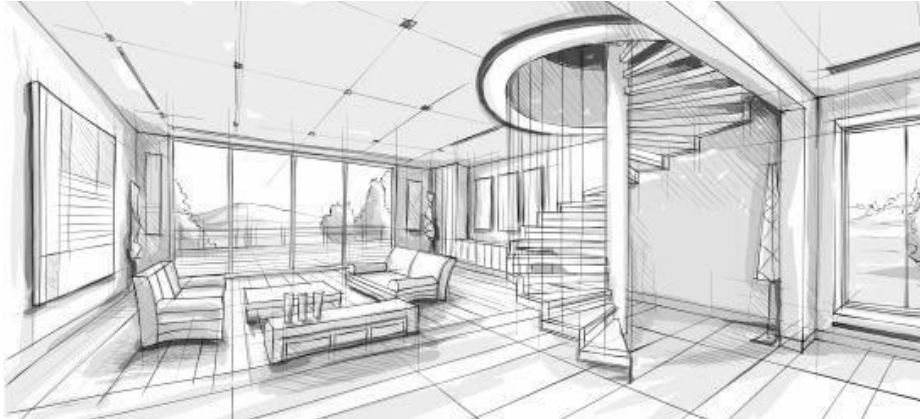
Slogan for the schools Program

Text Here

Text Here

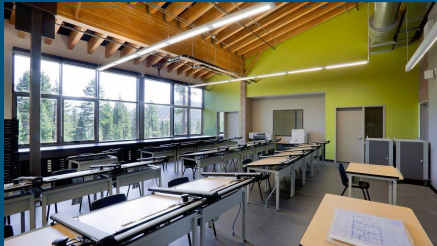
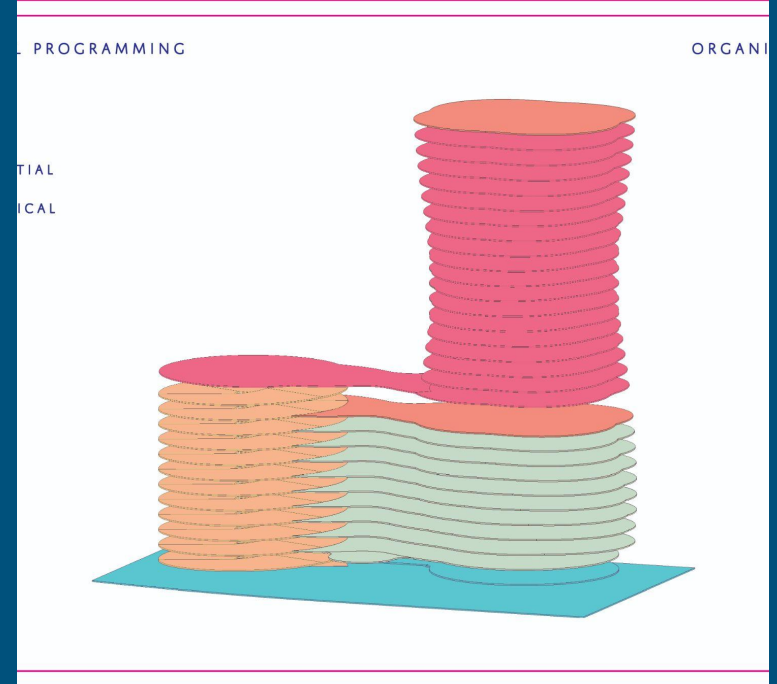
# Housing/Apartments - The Domus

Mixed-Income Living



# Housing Types:

- Condos
- Studio Apartments
- 2 Bed 2 Bath
- 
- 



# Condo



Slogan for Facility #1

# Condo - Floor Plan





# Condo

Slogan for Facility #3

Text Here

Text Here



# Studio Apartment



Slogan for Facility #1

# Studio - Floor Plan





# Studio Apartment

Slogan for Facility #3

Text Here

Text Here

# 2 Bed 2 Bath



Slogan for Facility #1

# 2 Bed 2 Bath - Floor Plan





# 2 Bed 2 Bath

Slogan for Facility #3

Text Here

Text Here

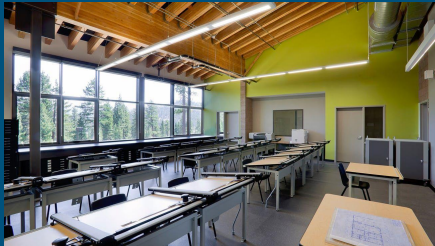
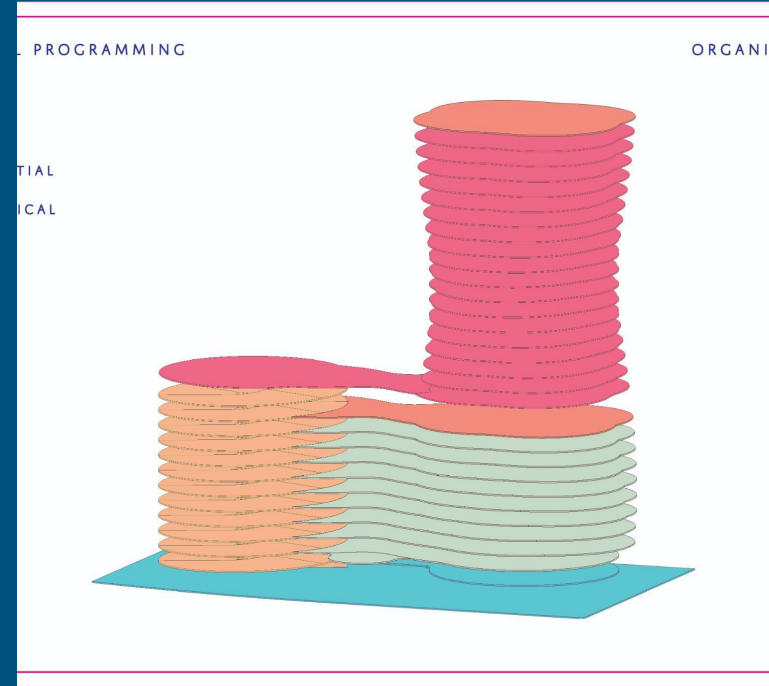
# Office - Bepis Architects

Architecture Firm for the Bois



# Office Facilities:

- Offices
- Conference rooms
- 
- 
- 
- 





# Office - Floor Plan



# Facility #1



Slogan for Facility #1



# Facility #1

Slogan for Facility #1

Text Here

Text Here

# Facility #2



Slogan for Facility #2



# Facility #2

Slogan for Facility #2

Text Here

Text Here

# Facility #3



Slogan for Facility #3



# Facility #3

Slogan for Facility #3

Text Here

Text Here

# Shared Facilities

## Final Connection of the Four Typologies





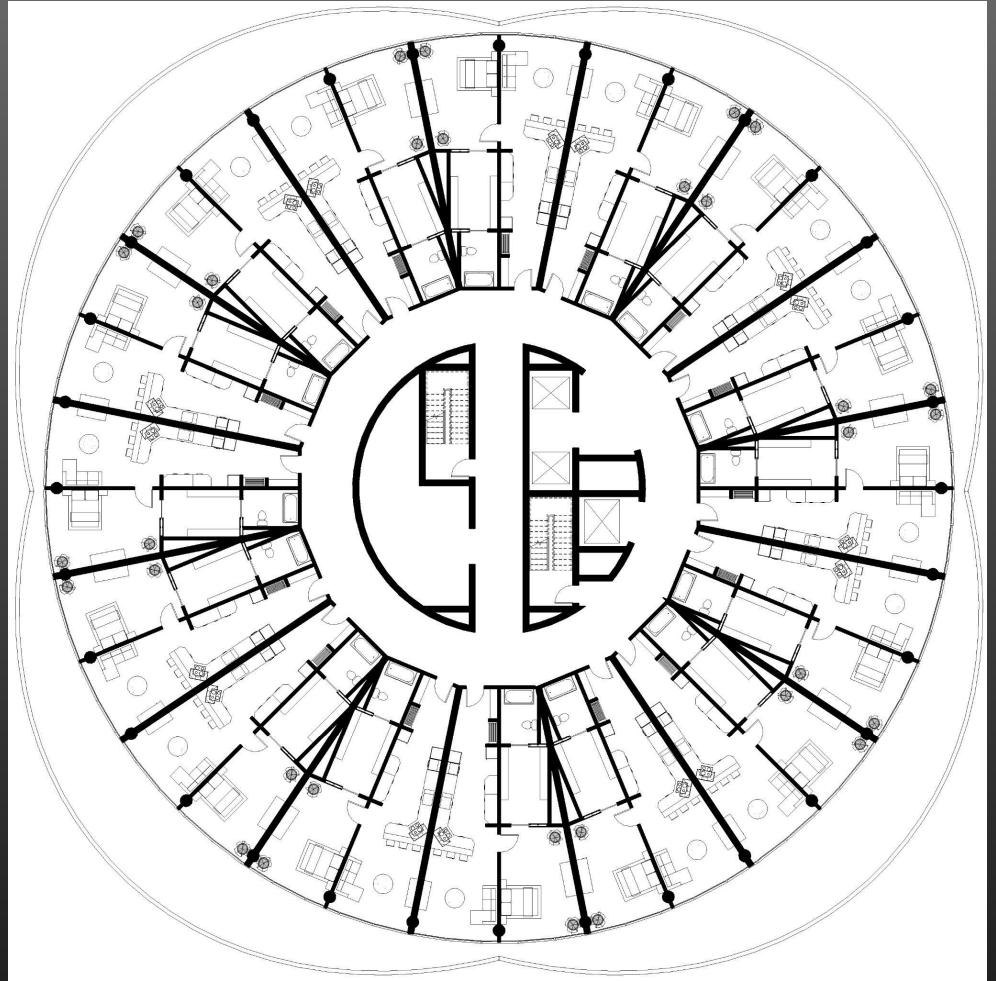
# Shared Facilities

- Wellness Center
- 
- 
- 
- 



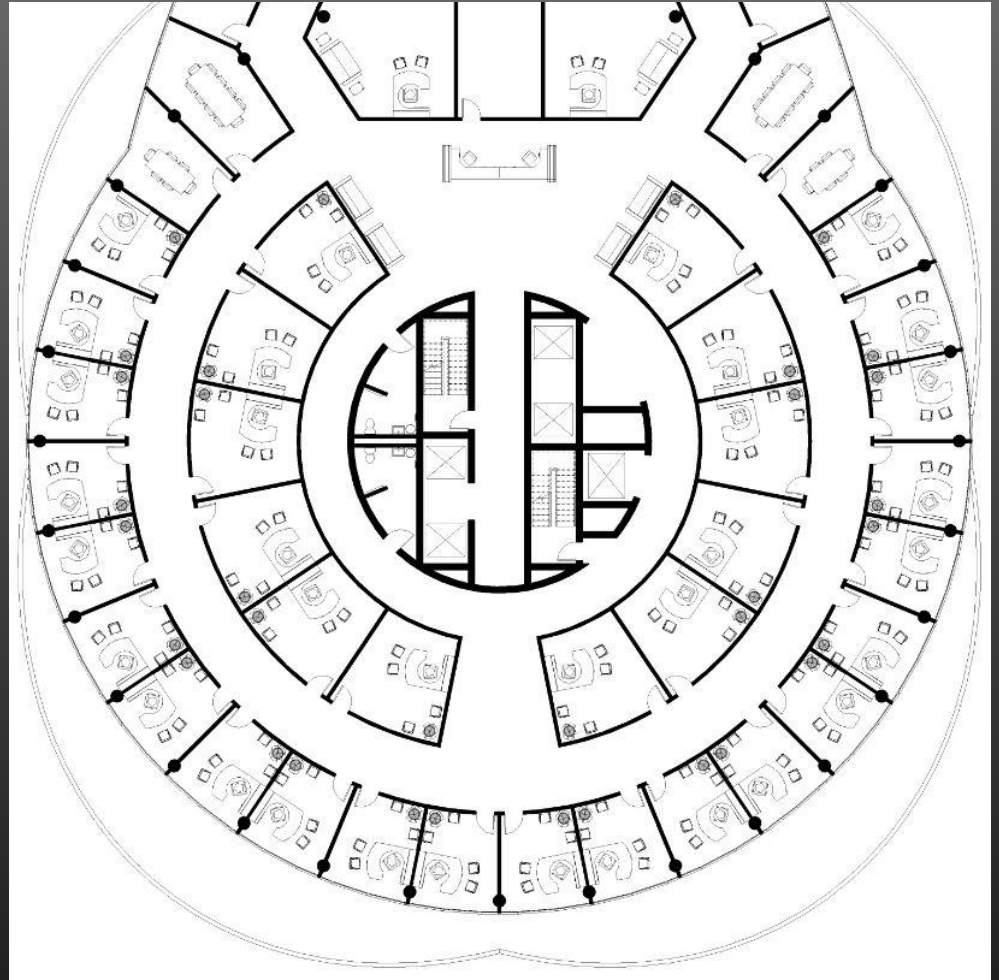
# Floor Plans - Housing/Apartments

- Studio Apartment Floor
  - Laundry
  - Trash Shoot
  - 16 - 1 Bed 1 Bath Rooms
  - Approximately 875 sq ft



# Floor Plans - Education

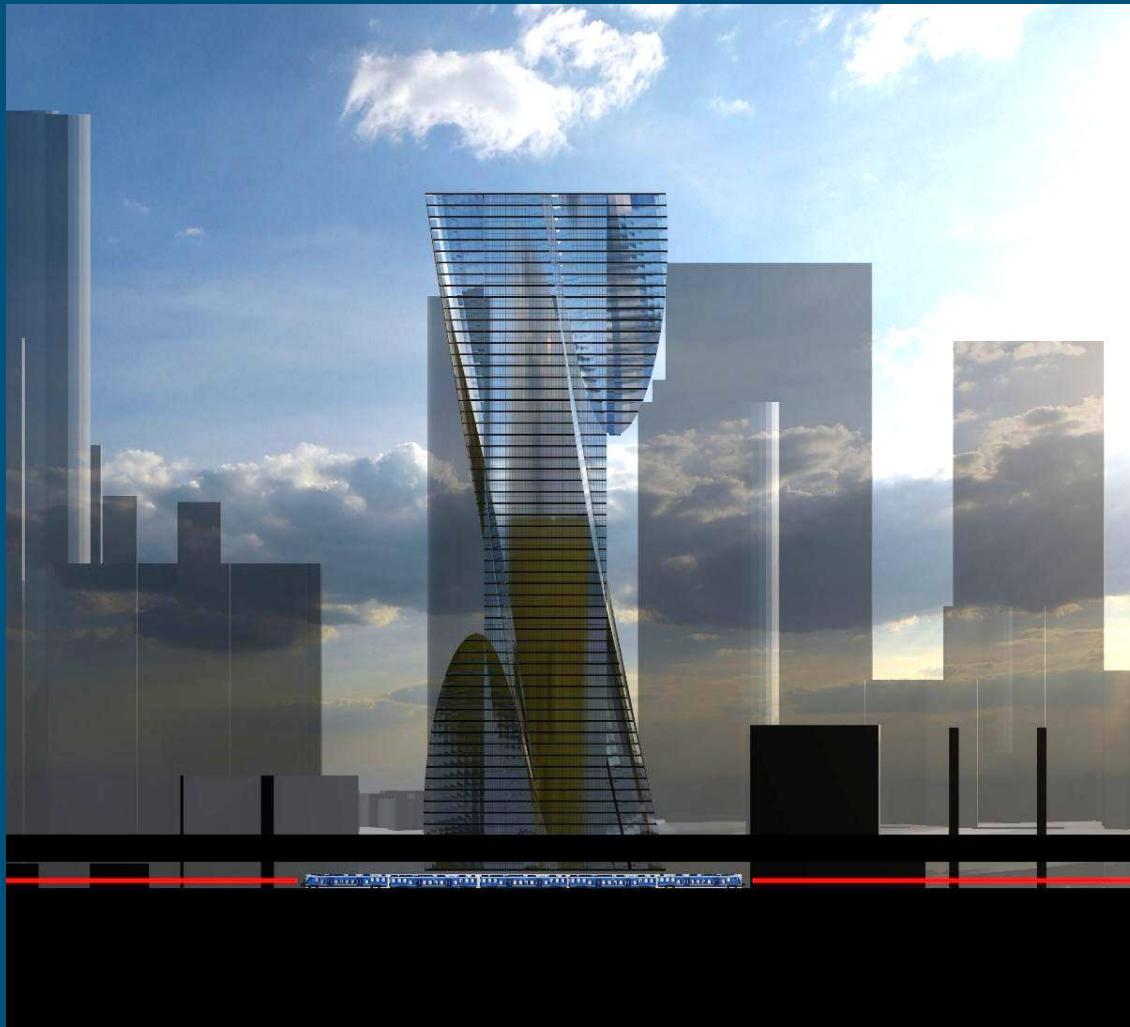
- Work-Place - Studio
  - 22 Small Work Rooms
  - 2 Executive Work Rooms
    - Designed for Teachers/Professors
  - 8 Conference/Classrooms
  - Reception Area



# Section

## *Context:*

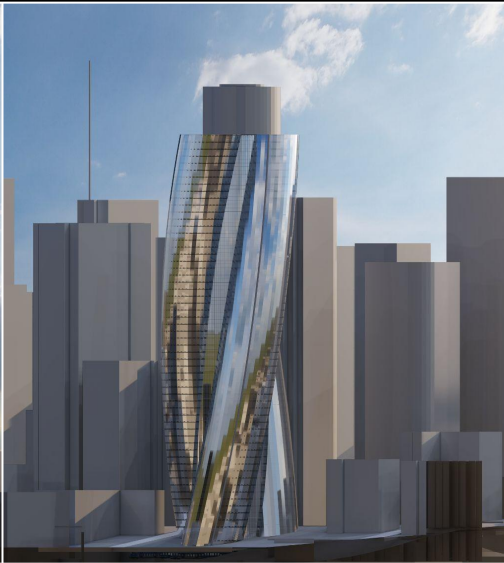
- Los Angeles Metro Rail
  - B-Line
  - D-Line
- Building Height Comparison
  - 900ft - Angels Ascent



*North Elevation*



*East Elevation*



*South Elevation*



*West Elevation*



# Elevations

# Additional Renders



# Additional Renders



Questions or Feedback



# Sources

---

<https://www.hdrinc.com/insights/space-building-connections-digital-world>

<https://www.worldtravelguide.net/features/feature/how-to-build-a-city-in-10-simple-steps/>

<https://la.curbed.com/2017/10/24/16532958/angels-knoll-angels-landing-redevelopment-finalists>

<https://la.curbed.com/search?order=date&q=angels+knoll>

<https://horizonskyline.net/2021/11/23/angels-knoll/>

<http://www.urbandesign.org/elements.html>

<https://www.gensler.com/uploads/document/730/file/Gensler-Annual-Report-2020.pdf>

<https://www.denvergov.org/content/denvergov/en/wastewater-management/stormwater-quality/green-infrastructure.html>

# Plaza

## *Typology Specs:*

- \_\_\_\_\_ Sq Ft in total
- \_\_\_\_\_ Levels

## *Accessibility:*

- Everyone

PROGRAMMING

ORGANI

TIAL

ICAL

