

Architecture In Law Enforcement



Criminal Justice System



Police Stations

Law Offices

Court House

Jails

Prisons

Community Center

Community Support

Social Services

Proactive vs Reactive

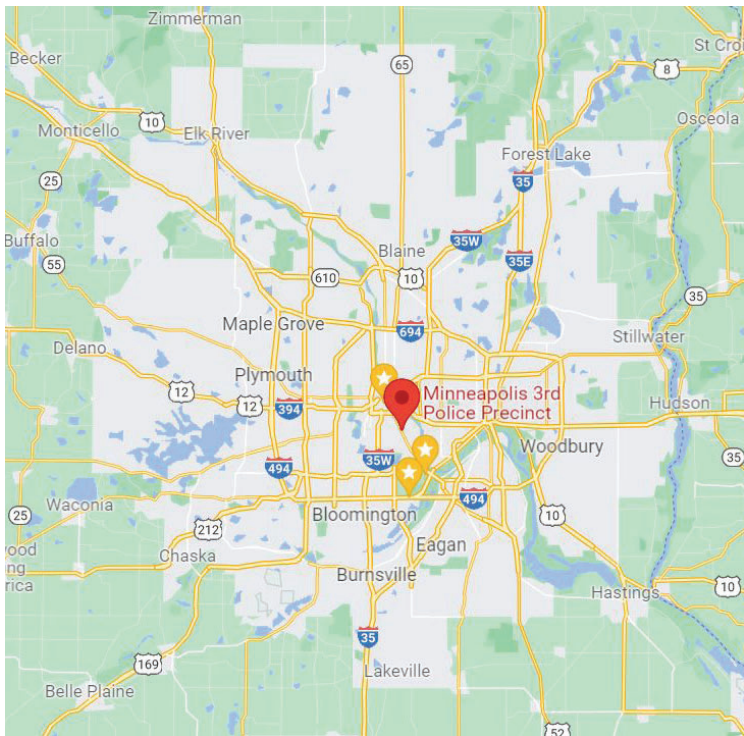
Research & Inspiration

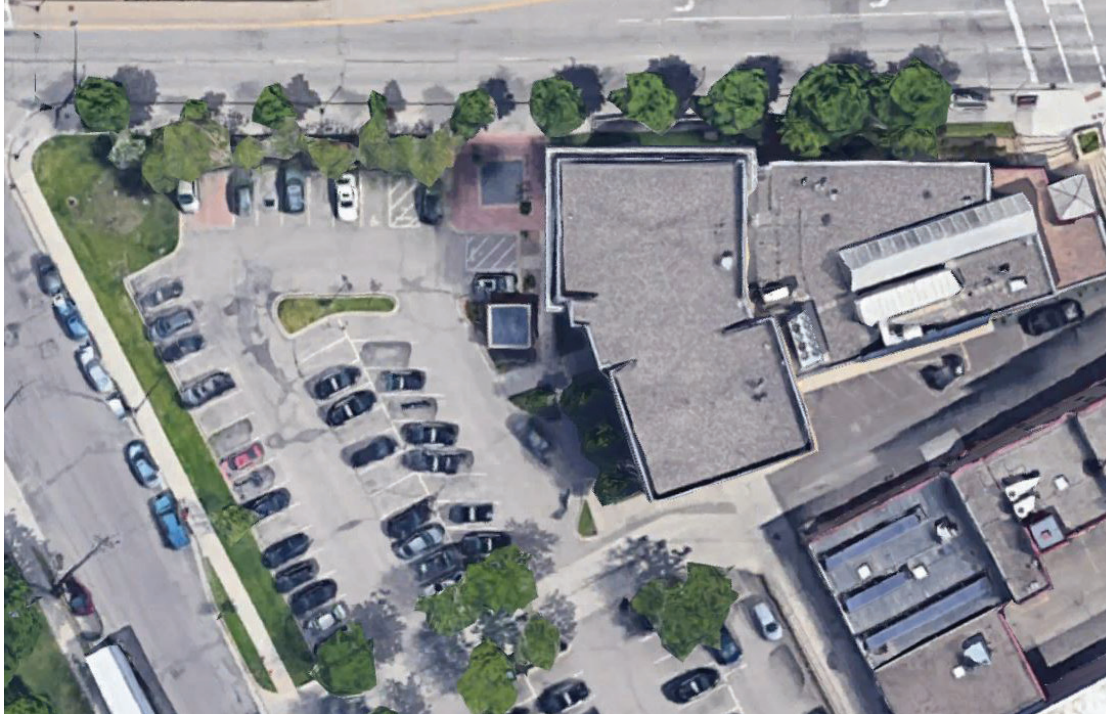
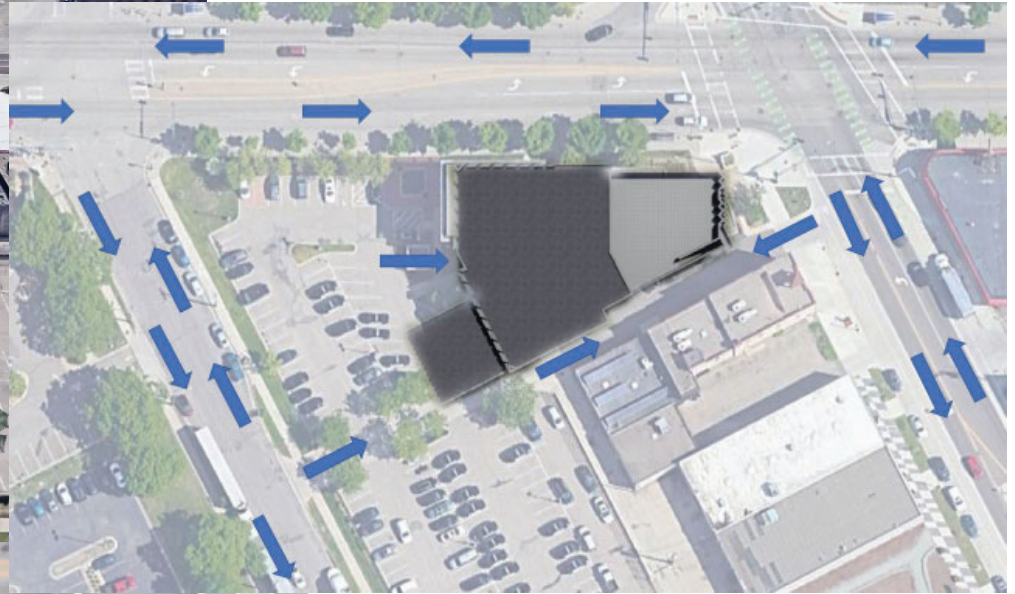
Police Station

Case Studies
Literature Reviews
Interviews
History
Site Studies
Preformance
Personal Experience



Minneapolis, MN





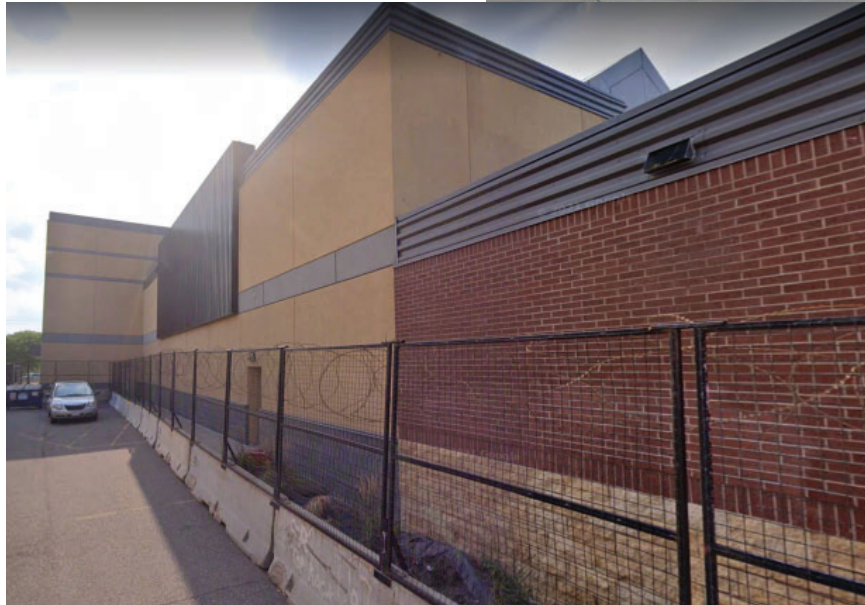
Site

The site is located at 3000 Minnehaha Ave, Minneapolis, MN 55406. This is on the south west corner where Minnehaha Ave meets E Lake Street. The site is triangle in shape and measures approximately 300 feet on the north boundary, 200 feet on the west. The most eastern part of the site is where the building is located, leaving the larger more open area of the site on the west open to parking.

Currently the building and the 3rd Precinct staff includes Patrol Officers and Investigations. This precinct also has a Community Response team and Crime Prevention unit.

Current Site

Location of a new police headquarters or station is key to its ability to serve the community. Oftentimes, citizens want to feel close to the station or want it to be a visible and accessible part of the neighborhood or city—not an unapproachable place at the edge of town. This makes them feel safer and more connected to the force.



Project Emphasis & Goals

1. Improve the criminal justice systems environment
2. Integrate new ideas, innovative design, and educate the public
3. Create a warm and inviting place that is designed for the place
4. Create an effective and well-designed center

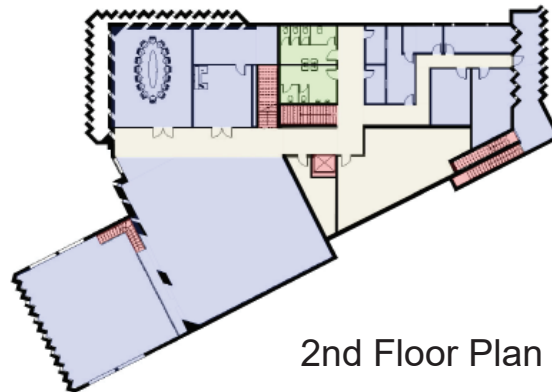




#1 Improve the criminal justice systems environment



1st Floor Plan



2nd Floor Plan



3rd Floor Plan



Materials
Natural Light
Open Space
Reduce Stress
Layout

TRAINING

I imagine creating a space for the police department to train or conduct scenarios for real missions.

EQUIPMENT

An equipment room for technologies, parts, clothing, and gear will make sure the rest of the building stay looking professional

GYM

Physical fitness is a factor when selling yourself for the job and remain a important part in every law enforcement officer.

EDUCATION

All officers need continuing education to keep up with new laws and to maintain their licenses. Have a space to do so is very important.

COMMUNITY

A community room for promotions, awards, and other community event is important to the public.

OFFICES

Offices are a must in a law enforcement center but should be designed in a way that promotes transparency.

INTERVIEW

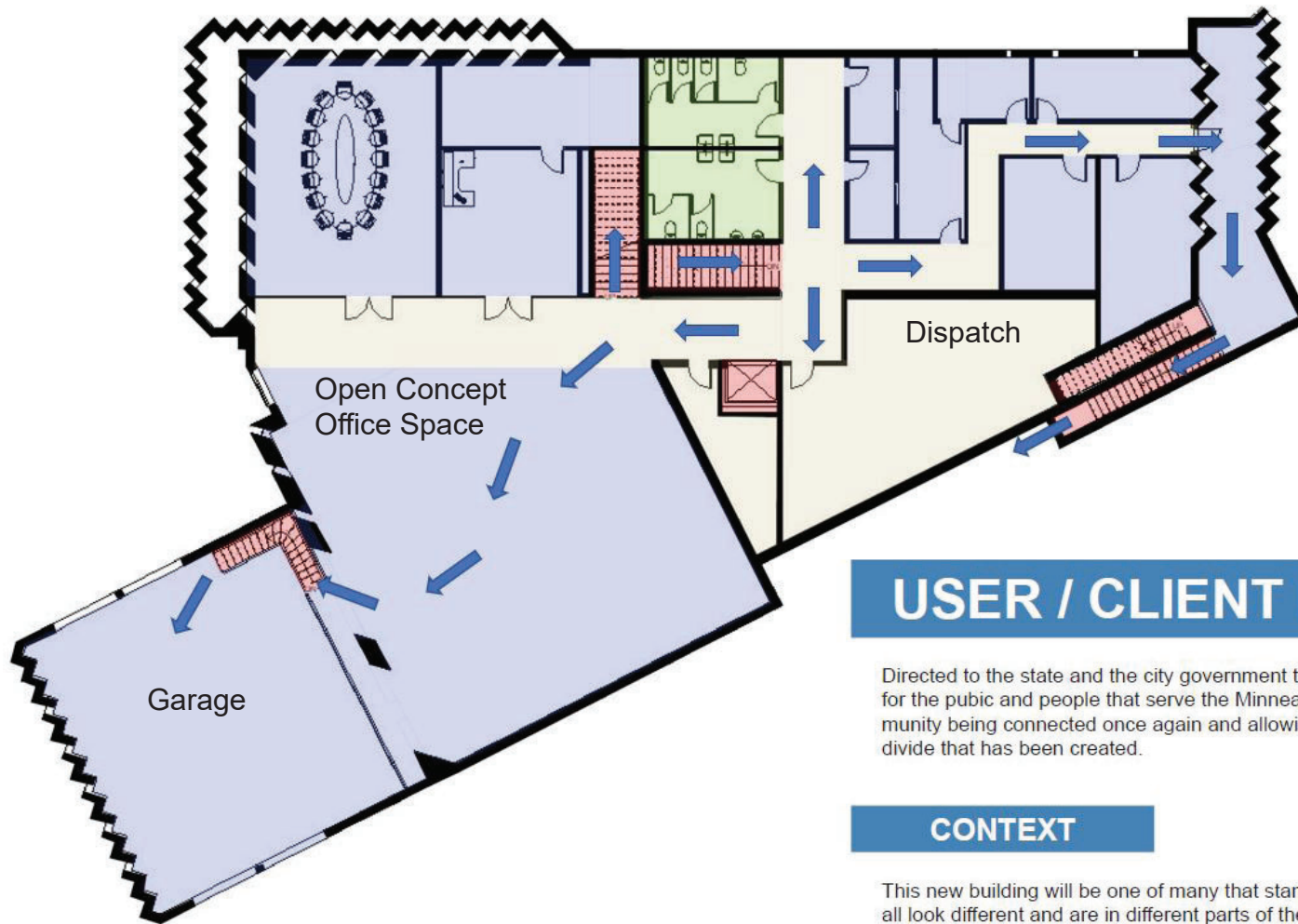
Interview room are design small for good reason but is important for solving crime.

GARAGE

Space to park police vehicles during Minnesota winter is a must.

BREAK

Everyone deserves a break, its actually a law in employment. there is no reason that it can not be a major project element when the work conducted in these centers never stop.



USER / CLIENT DESCRIPTIONS

Directed to the state and the city government that funds public buildings. The project is for the public and people that serve the Minneapolis Minnesota area. I imagine the community being connected once again and allowing the new building mend the gap in the divide that has been created.

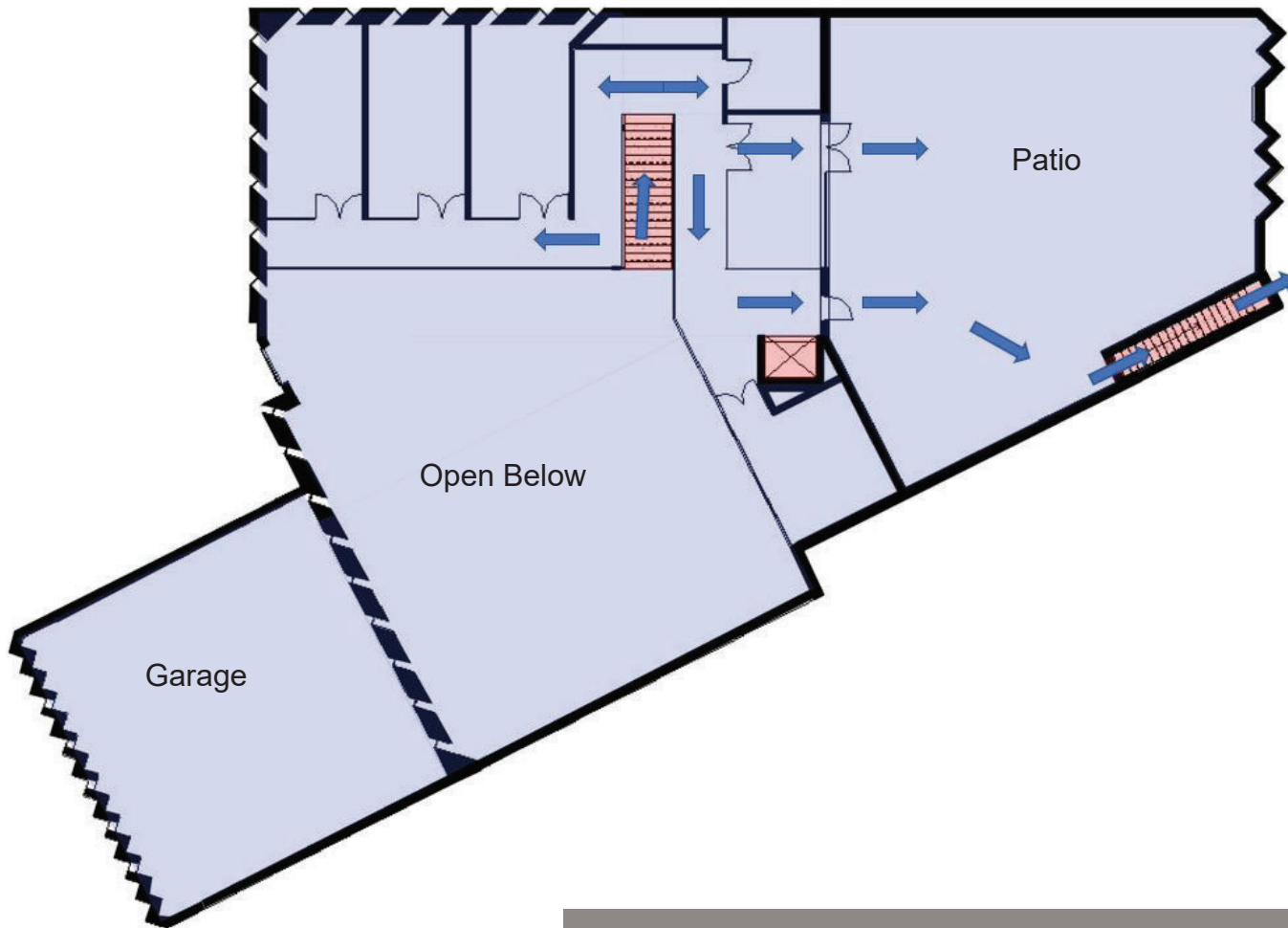
CONTEXT

This new building will be one of many that stand tall in the Minneapolis city limits. They all look different and are in different parts of the city but have common mission. The job of the police are to aid the public and can do so by improving public serves in a building that will be open to all.

PEOPLE

- Police Officers
- Communication Specialists
- Public
- Local Government Officials
- Other Law Enforcement Professionals
- Local, State, and Federal Employees





A crucial component of an effective police station is technology system design. The devices, software, and systems that police departments use are evolving. From dispatch to patrol to forensics, consider all the systems you need in place and operational as





#2 Integrate new ideas, innovative design, and edcate



Program

1. Spaces are organized base on efficiency and intersecting secondary corridors
2. Activates conducted in the station's operational functions and interactions are encouraged among law enforcement personnel, staff, and administrators.
3. The secondary corridor services support spaces.

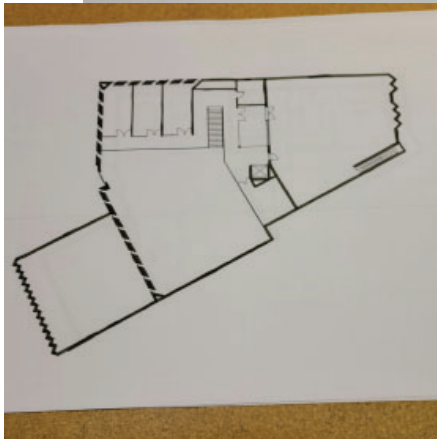
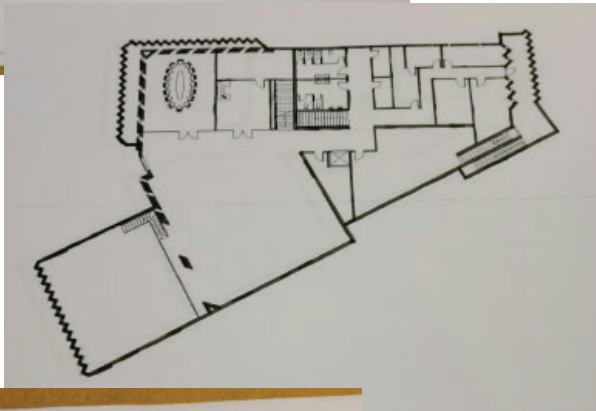
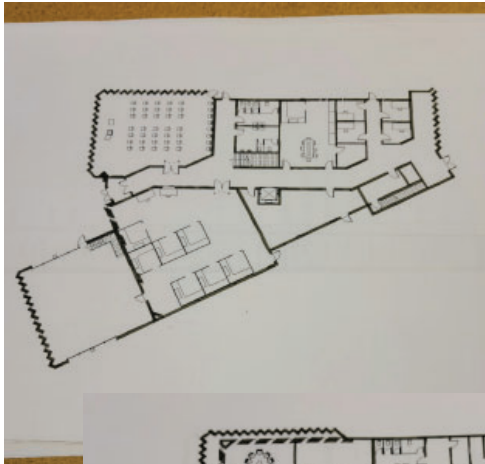
Energy Efficiency

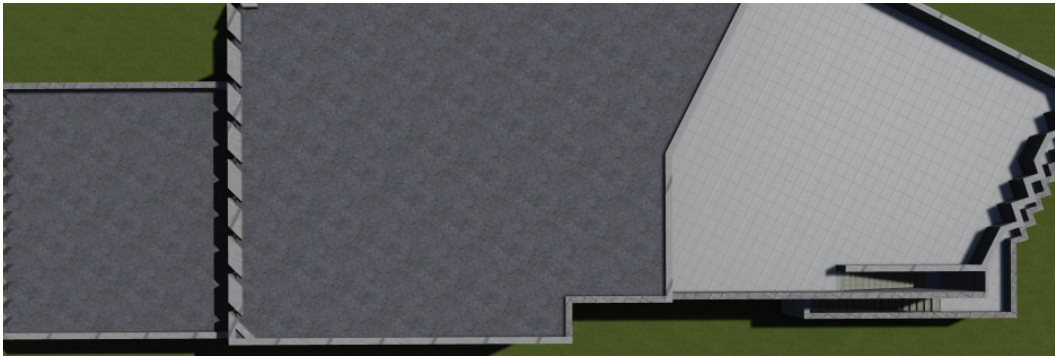
Is targeted through the use of active solar panels, geothermal HVAC systems and passive systems like natural ventilation, natural daylighting is enhanced with glazing and the tall continuous precast concrete walls that allow large strips of light in.

Form

The station is seeparated into five connected forms. The garage functions, the storage, support, admin, operations, and public spaces.

#3 Create a warm and inviting place





#4 Create an effective and well designed center

The design of a police station only addresses a portion of the important issues impacting police and community relationships. But as the physical embodiment of neighborhood safety will set the tone.

Material & Windows

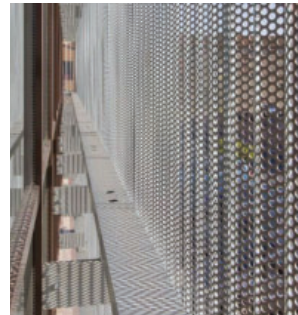
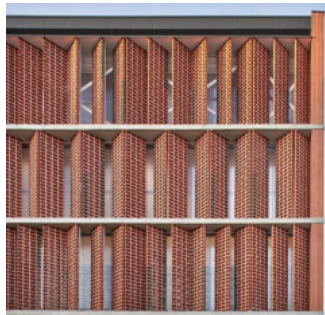


Performance Measure: The Law Enforcement Center’s design will be measured in energy use and number of citizens help relating to the number of calls for service. Lastly the city and the designs will take in consideration of the overall community feedback.

Performance Measure Source: The amount of energy used will be obtain through the power service provider but also with the building’s own meters. The number of citizens help relating to the number of calls for service will be provide the annual reports that the city offi cials do and then fi ltered through what calls were directly related to the new law enforcement center.

Performance Analysis: The kind of analysis that will be done will be created in graphs and drawings. Tools and resources will be generated from online statistics and reports.

Performance Judgement: I will be able to judge the performance that the building meets by taking other police stations and law enforcement centers around the city and averaging the numbers to fi rst clericity that the performance is in the appropriate range of use. Then we will be able to measure the use of the new technologies and alternative energy sources to measure the impact and the diff erence that the new law enforcement center will create.





There is no template or formula for a successful police station design. Many stations have similar components or core functions, but personnel use them in different ways and need them to perform to different standards. For example, it's safe to say every police department needs an evidence room. Based on their operations and case load, however, their needs will vary. One department may need an 800 sq. ft. room, while another needs 3,000 sq. ft. for evidence storage. A department's needs, wants, and vision for the future—as well as the future of the community they serve—all inform their building's design.



In conclusion the choice of materials to the component and technology everything will affect it. making a highly effective police station can be difficult and since every police department has different need you cannot always reuse previous designs. Law enforcement already live a very stressful life and with this design we can address some of the issues and create an inviting, safe place for all users.

Results of the protests

2 deaths

604 arrests

approximately 500 million in damages

over 1500 properties

7123 National Gaurd troops deployed