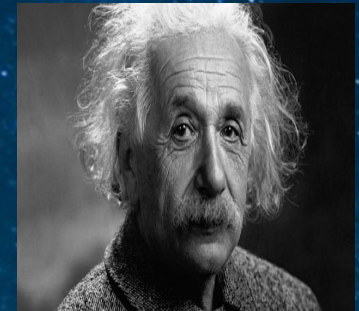


Hindsight 20/20:

*Architectural Exploration of Empathy
for Refugees in a Design Solution.*

*“A bundle of belonging isn’t the
only thing a refugee brings to his
new country.”*

-Albert Einstein



REFUGEES CENTER

Lorem Ipsum
&
SMALL BUSINESS INCUBATOR



Refugees

According to the 1951 United Nations Convention, the term “Refugee” is defined as, “Someone who is unable or unwilling to return to their country of nationality owing to a well-founded fear of being persecuted for reasons of race, religion, nationality, membership of a particular social group, or political affiliation.

The UNHCR or United Nations High Commissioner for Refugees are mandated to protect and seek permanent solution to refugee problem

Refugees

Refugees are people just like you and I born into a family with relatives and friends, but due to circumstance far beyond their control, refugees abandoned their livelihood and settle in a foreign land with the hope of a better life for them and their children.

The refugee experience is one of mental trauma resulting from exposure to violent acts of killings, sexual and physical abuse, and destructions perpetrated against people.

Prior to becoming refugees, they lived a normal life with their families and friends. In fact, others are nurses, teachers, engineers, businesspeople and much more.

Architects

Architects may not be the UNHCR but, as members of this profession, there is something you and I can do collectively to mitigate some of the problems refugees face.

Design Facilities with spaces to mitigate Trauma by providing a Healing environment

Design a facility that will give refugees the platform or avenue where they can leverage their talents, skills, social acumen, and business acumen.

A place where all these are recognized firsthand and leveraged in an easy and quick time frame so refugees can become productive members of the society at a better economic level.



GOALS

REFUGEES CENTER

&

Small Business Incubator

HEAL THE TRAUMA
PROVIDE EDUCATION
ENCOURAGE:
SOCIAL
CULTURAL &
SPIRITUAL
ESTABLISHMENTS



INSPIRATION

“Architects mostly work for privilege people, people who have money and power. Power and money are invisible, so people hire us to visualize their power and money by making monumental architecture. I love to make monuments, too, but I thought perhaps we can use our experience and knowledge more for the general public, even for those who have lost their houses in natural disasters.”

-Shigeru Ban

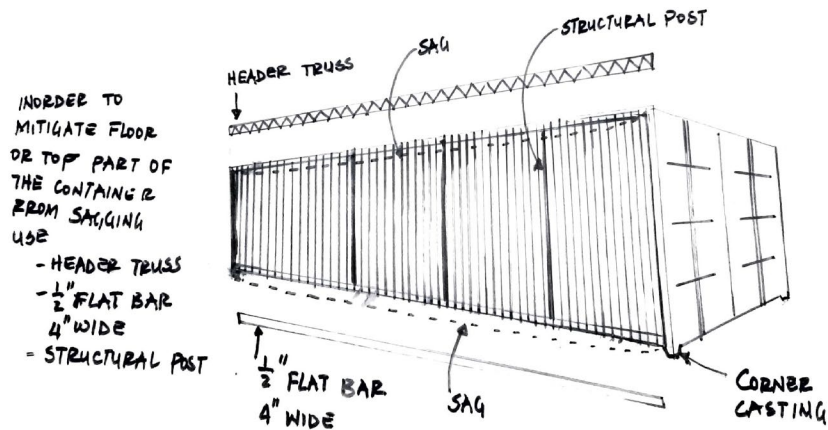
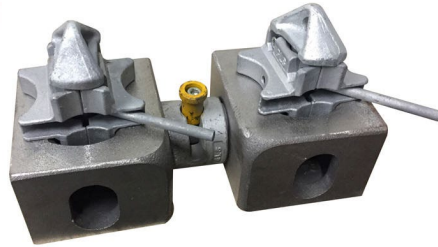
MATERIALS

Traditionally shipping containers are used for shipping goods from point A to point B.

Ironically, most of the refugees who end up in North Dakota came in airplanes which in a way can be related to a shipping container.

In this project however, shipping containers are used as a vessel of transformation

Shipping containers are readily available and are quick to construct. Its frugality is one element seen in refugees' appreciation and respect for the limited resources they have and use it to maximize outcome.



MATERIALS



POLYCARBONATE

- Creates the Greenhouse Effect
- Block 99% of Ultraviolet Rays
- Diffuses Sunlight which saves plants from burns since planting at the RC & SBI happens all year round

MATERIALS

EARTH FROM AFRICA



- Depicts scenes of long-distance walks done by refugees on bare foot. Earth-Body-Heaven connections through the clear polycarbonate roof.
- The believe that when you die, you are buried in the ground with the hope of rising again; therefore treat Mother Earth with Respect.

By using the Photovoltaic Watt calculator, the RC & SBI is located at Latitude 46.81 and Longitude -96.78. The Calculator generated the following variables,

Array Type - Fixed Roof Mount.

System Losses (%) - 14.08

Tilt(Degree) - 20

Azimuth (Degree) - 180

The retail electricity rate for commercial building in this area per the Photovoltaic Watt calculator is \$0.08 kWh

The resulting solar Radiation is 4.51
(kWh/m²/day) = 48.437 (kWh/ft²/day)

The total area of the solar Panel is

51'x16' = 816 sq. ft.

Total area of the RC & SBI building

277'x122' = 33,794 sq. ft.

Therefore 816 sq. ft. x 48.437
will equal to 39,524.592 kWh/day.

Using Xcel figure of 9 kWh/sq. ft/day
multiply by the total area of the building 33794 sq. ft, we'll get
304,146 kWh/day

Therefore 304,146 kWh/day X 365 days = 111,013,290 kWh/year.

And for our solar panel, 39524.592 X 365 = 14,426.08 kWh/year

About 1/10th of the total power required for the whole building.
That fraction would be used to pump the harvested water for indoor
irrigation and other minor operations within the facility.

SOLAR PANEL



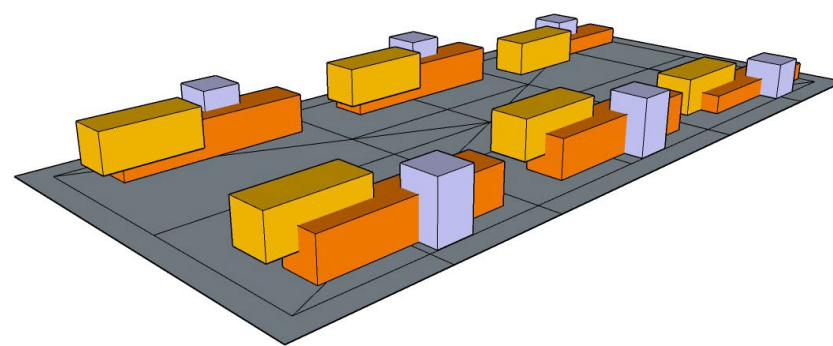
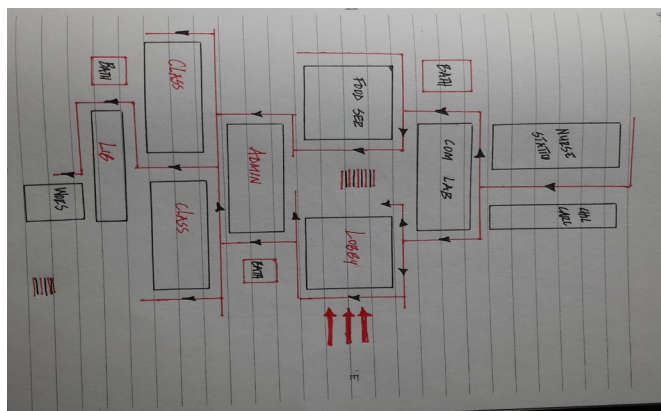
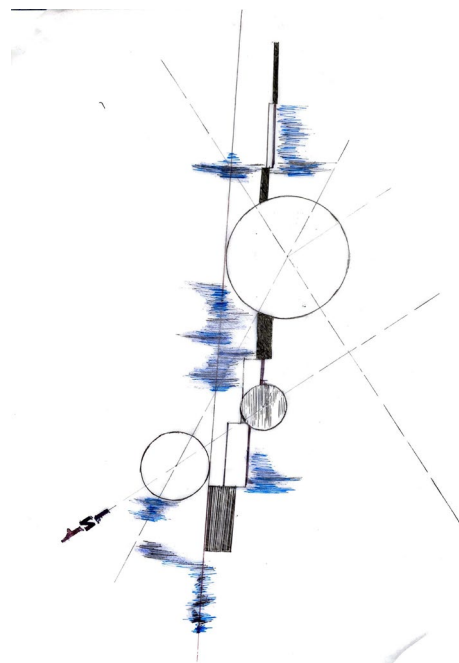
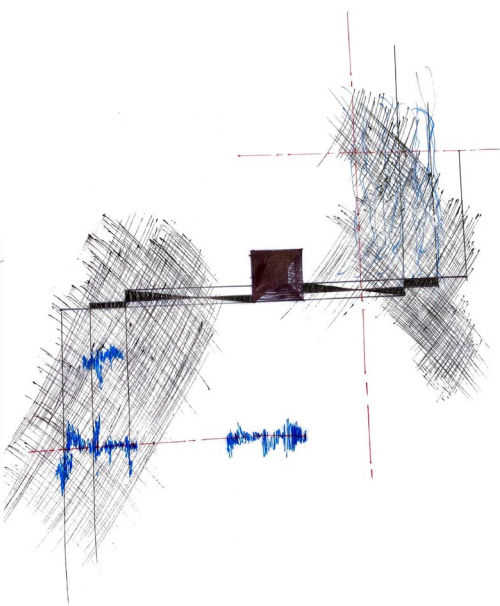
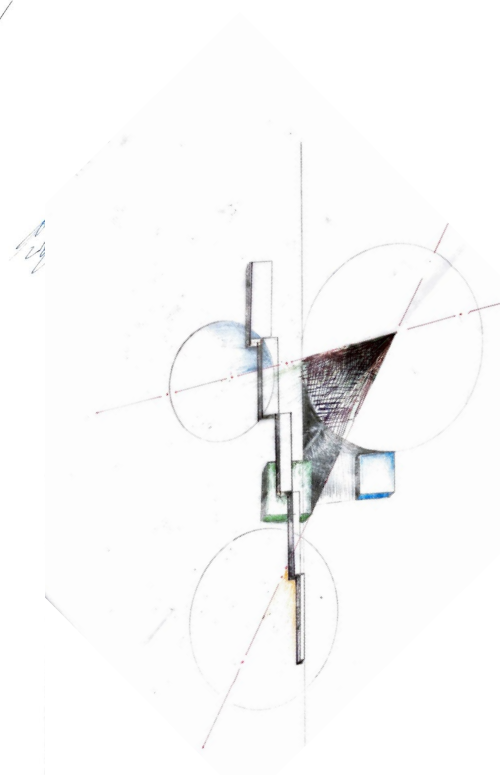
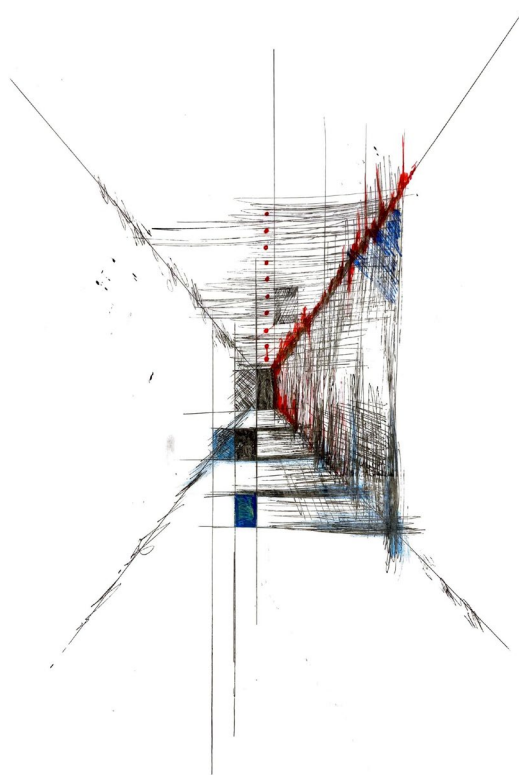
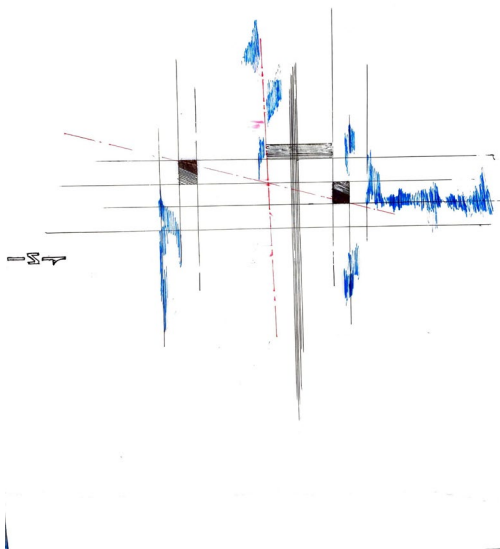


SITE

The proposed site for the RC & SBI is the old Kidz R US Daycare facility at 6102 10th St. South Fargo, ND 58104

The site is bordered by the beautiful Red River to the East and University Drive to the West.

Conceptual Sketches
and Spatial Ideation
using Geometric
Shapes and lines.



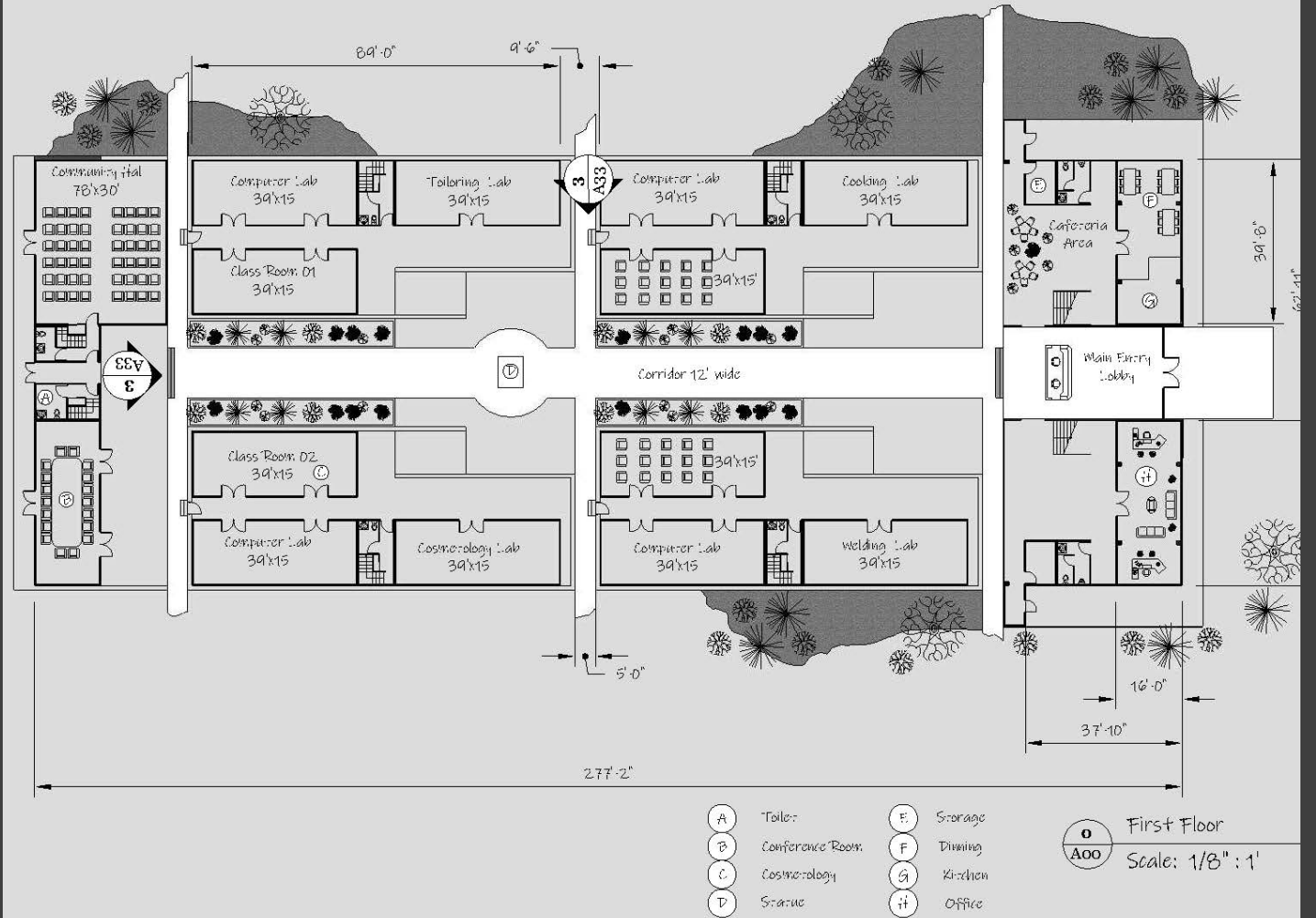
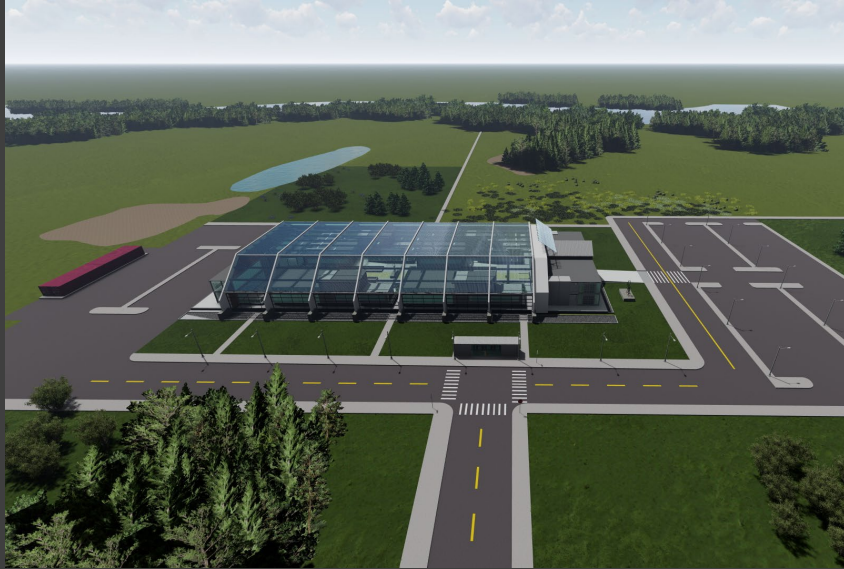


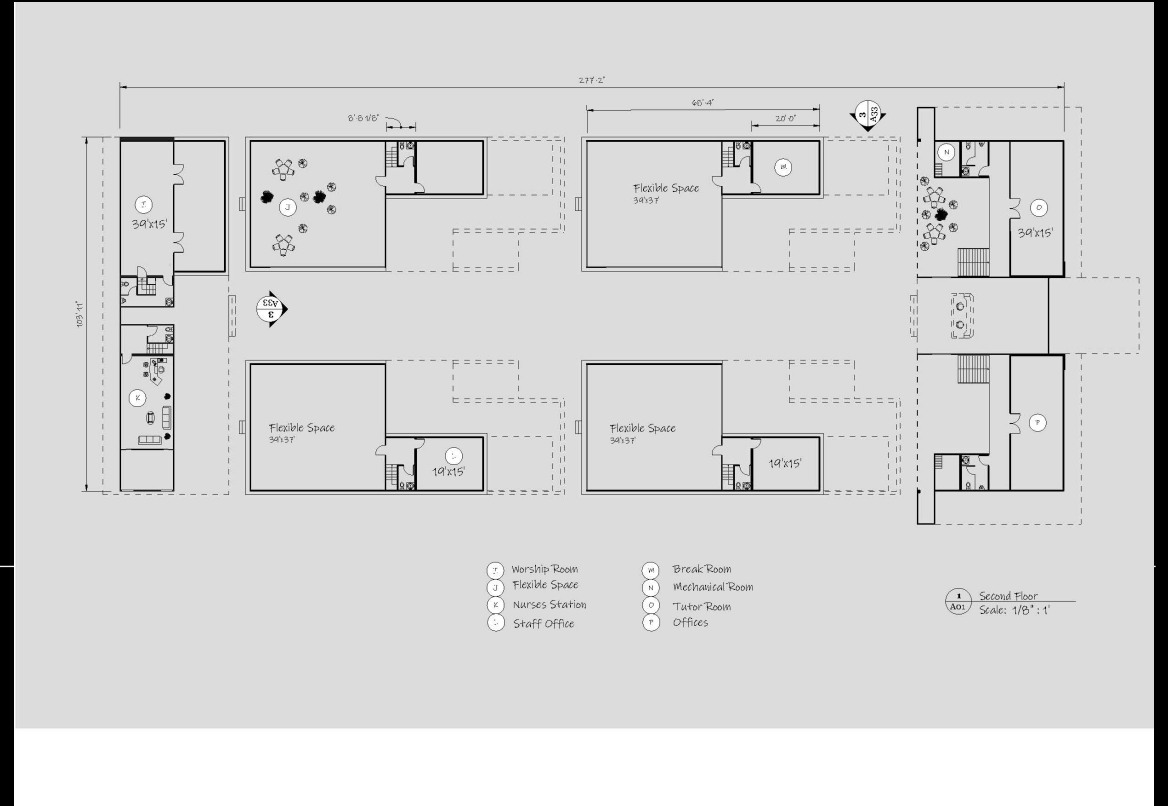
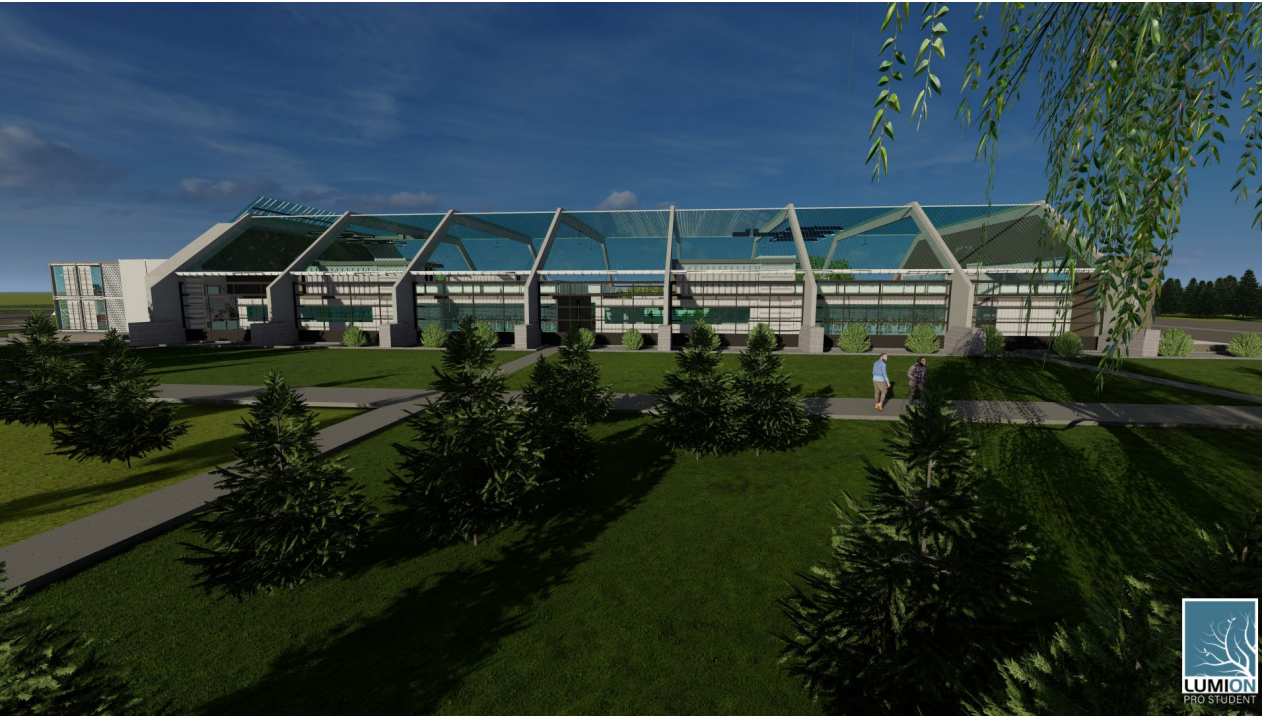
Nomadic
Museum

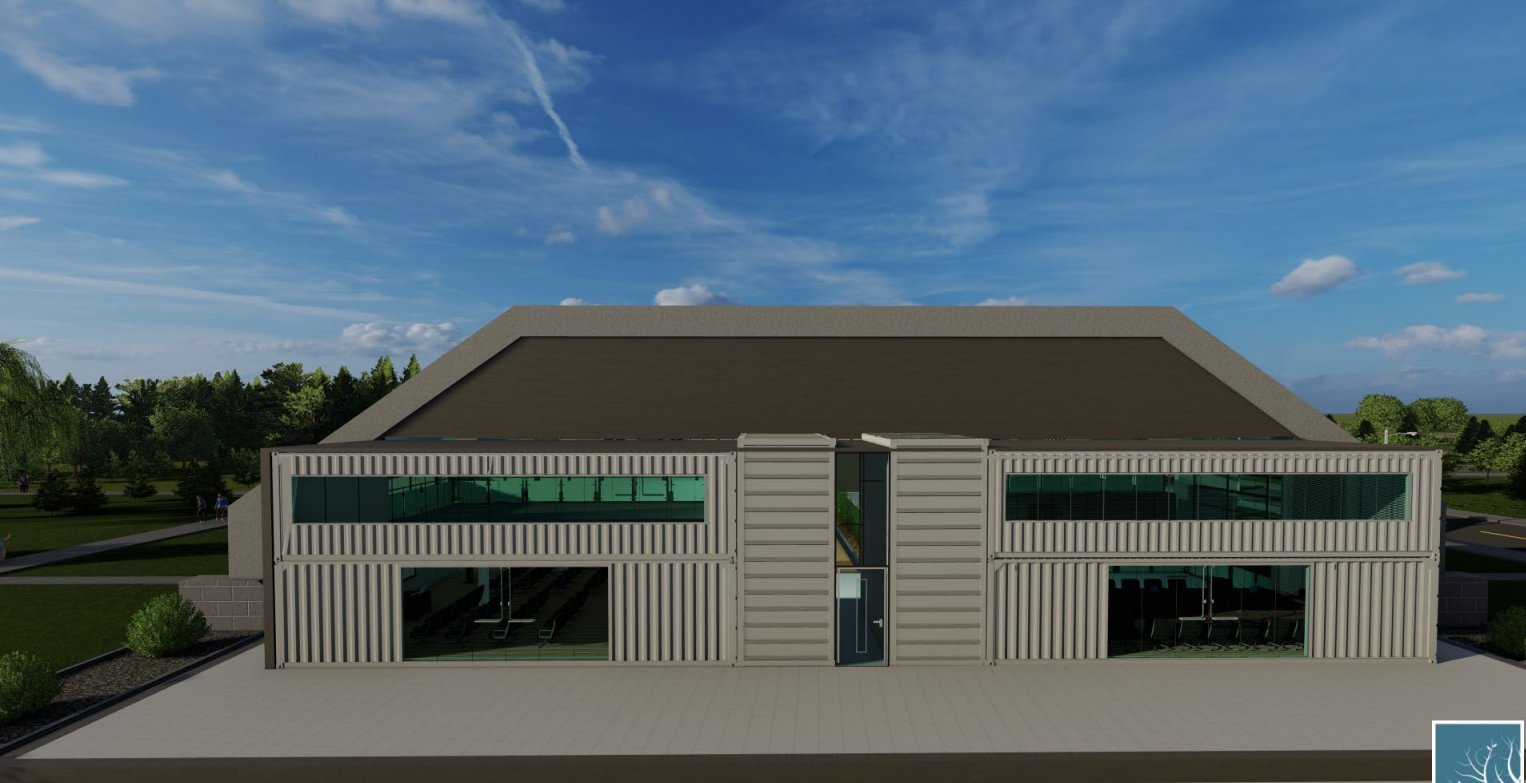
Design Inspirations



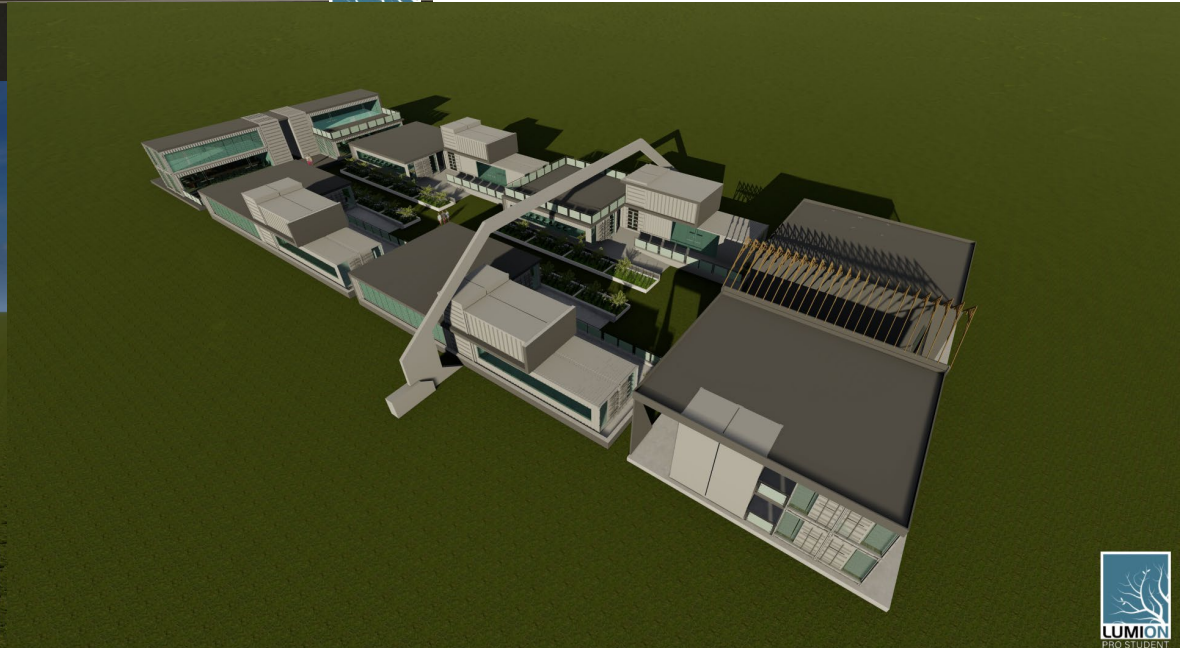
Proposed
Notre Dame





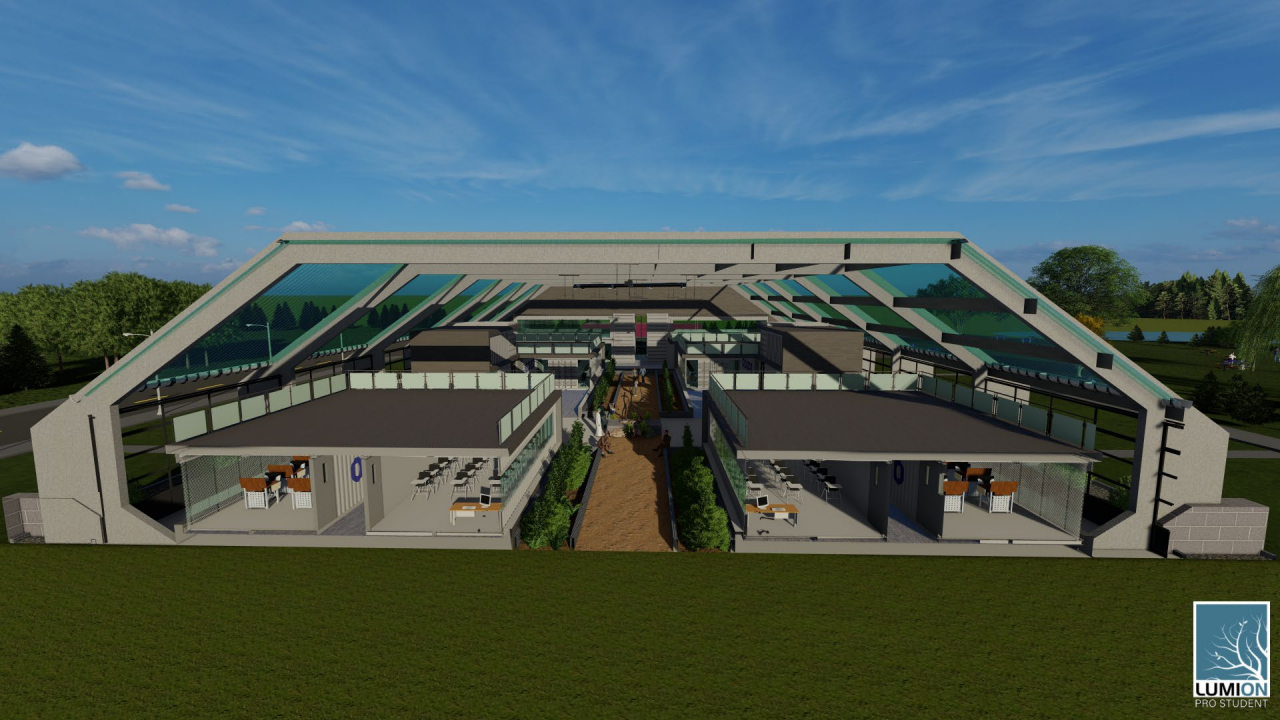
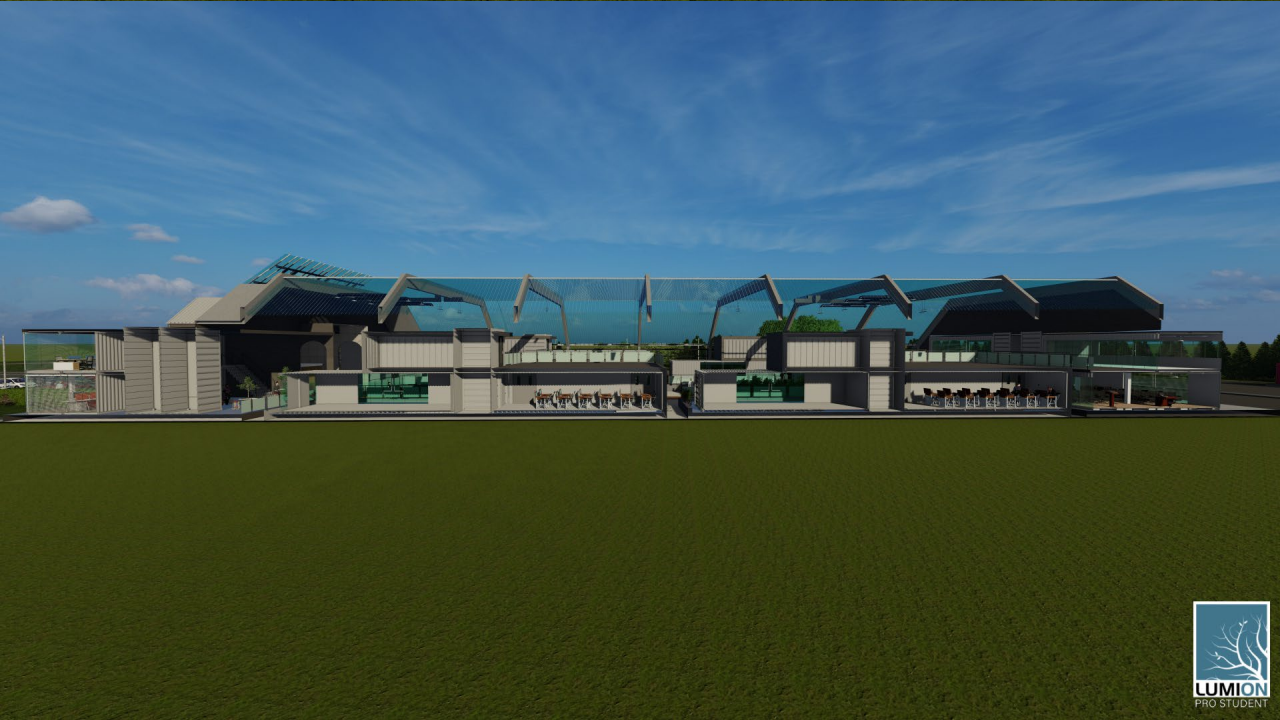


Assembly





Sections





Interior
View

Cafeteria Space



Central Court Statue



Corridor



Apprenticeship



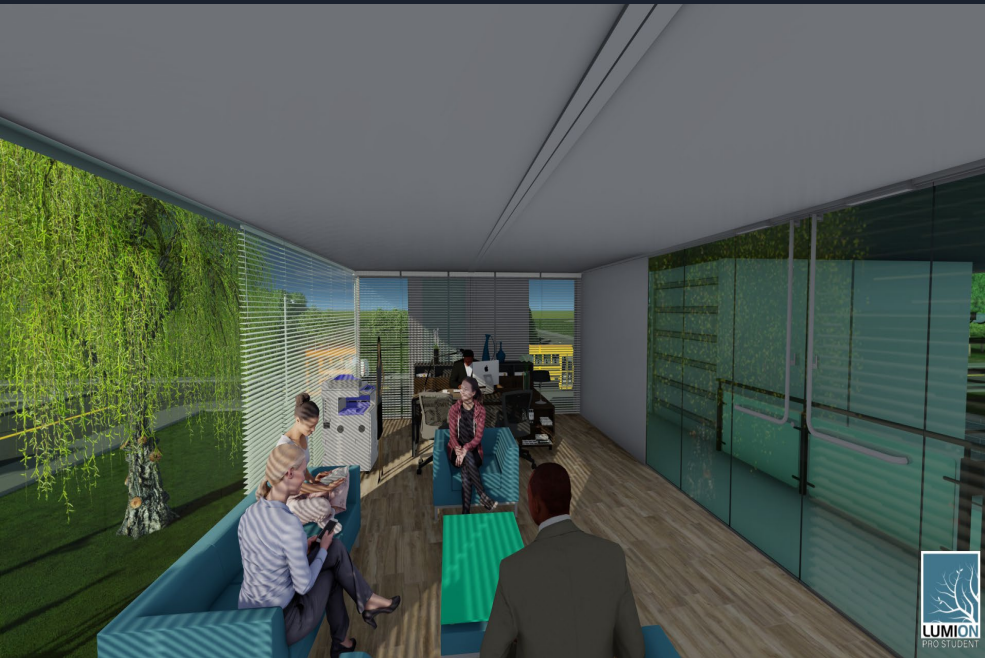
Counseling



Tutoring



Office Staff



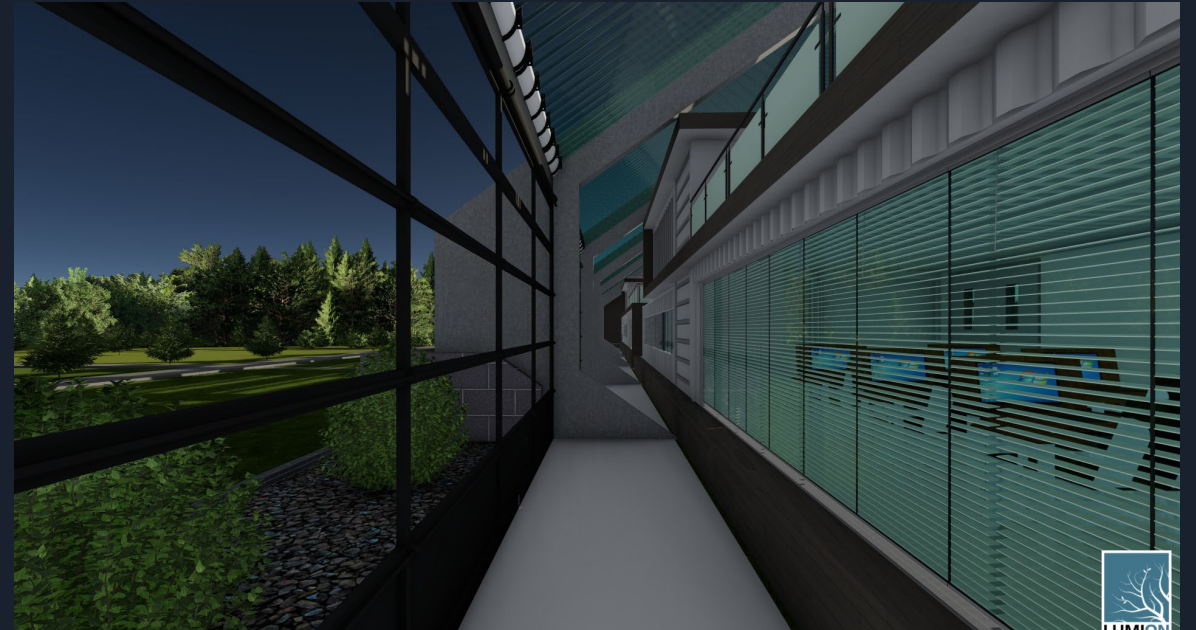
Bus Stop



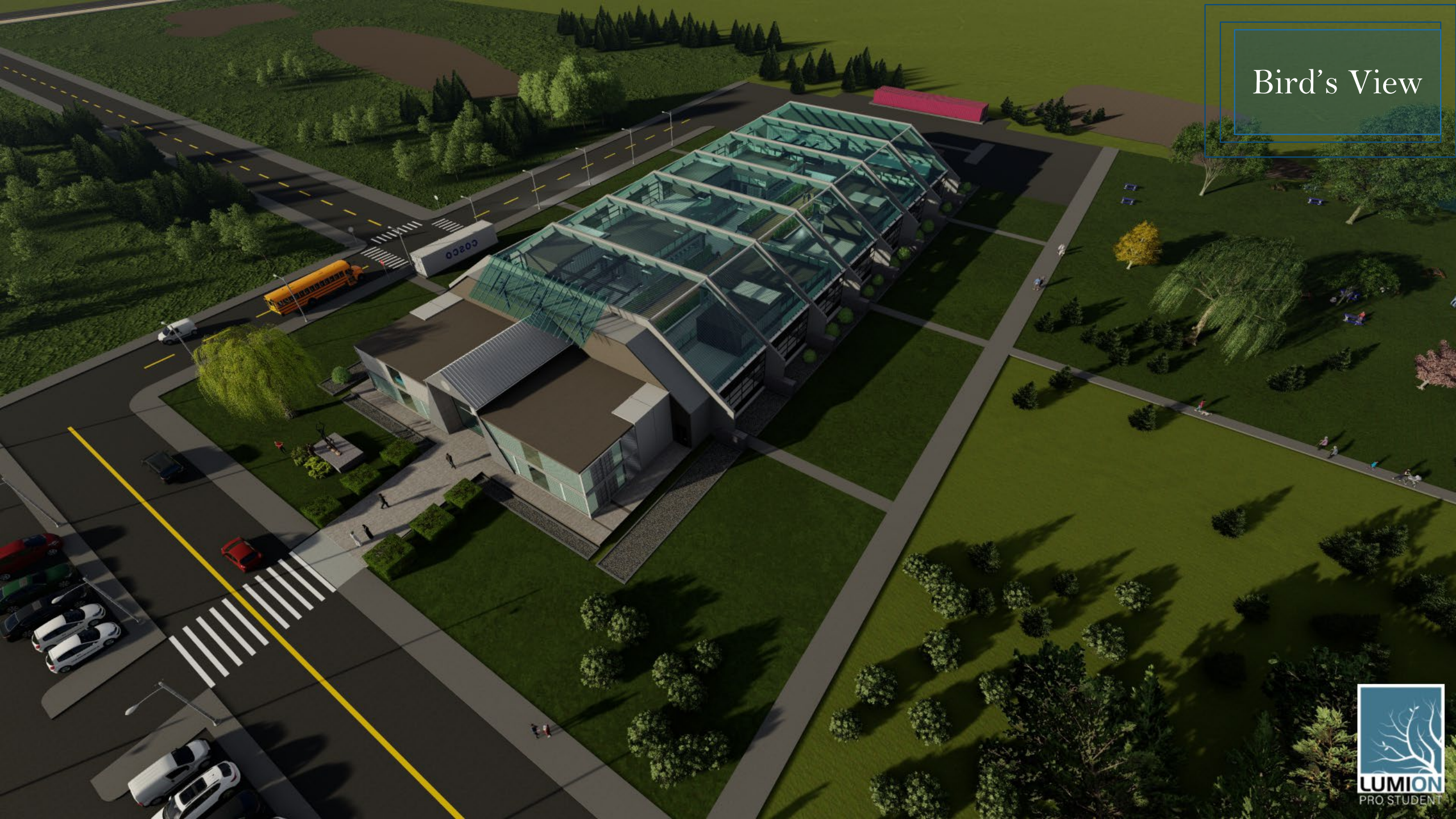
Meeting Room

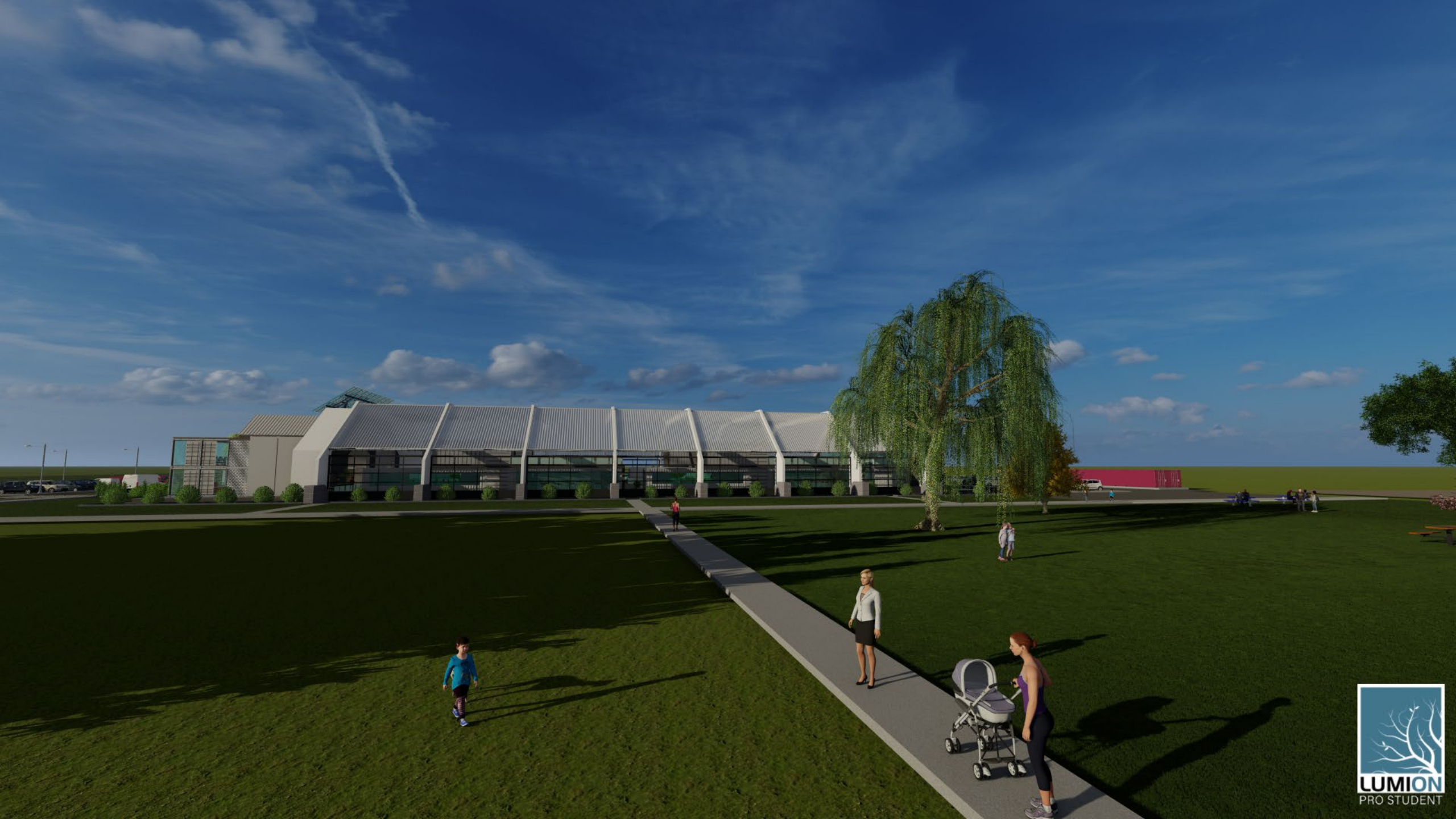


Secluded Area for counseling



Bird's View

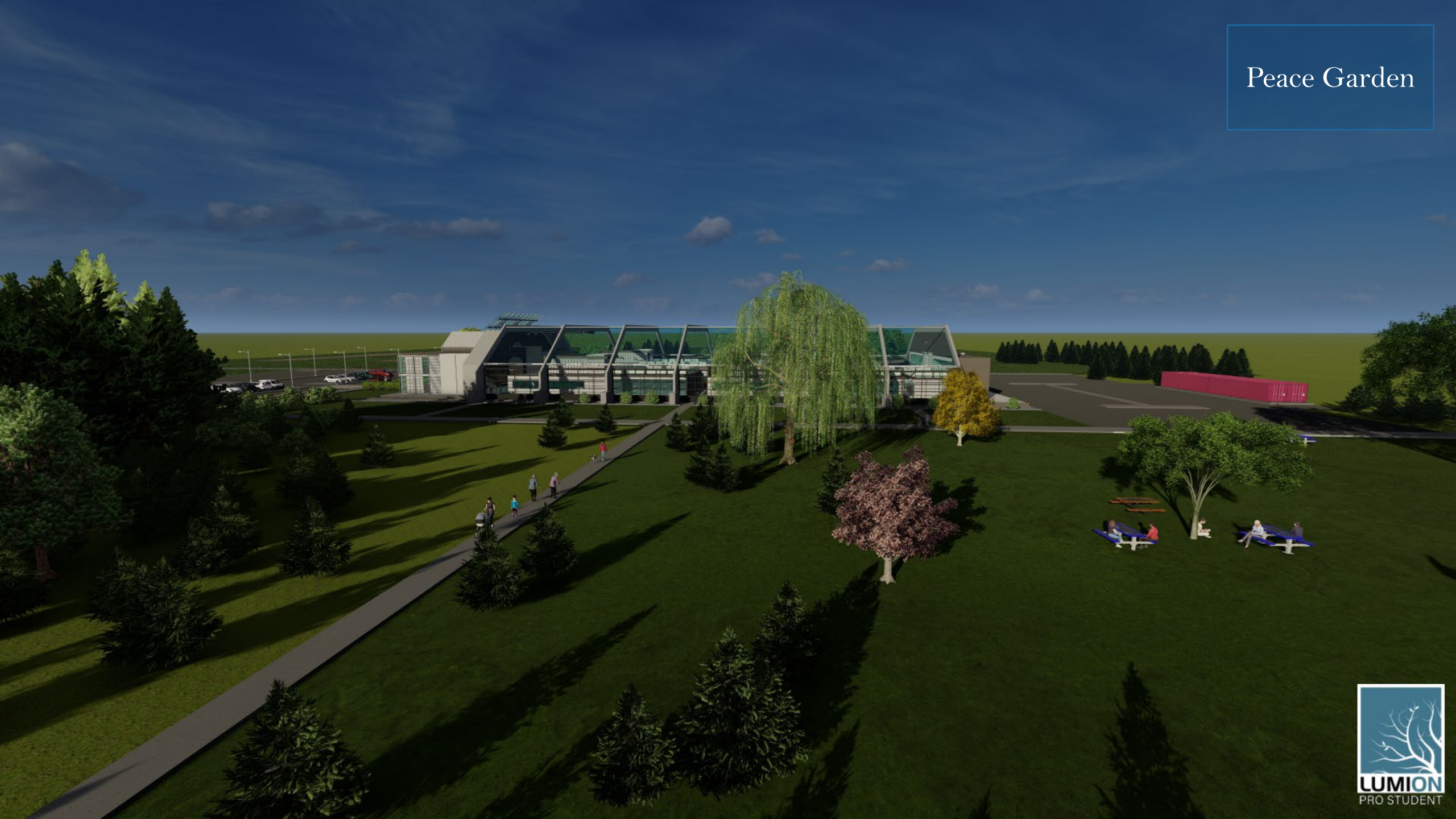




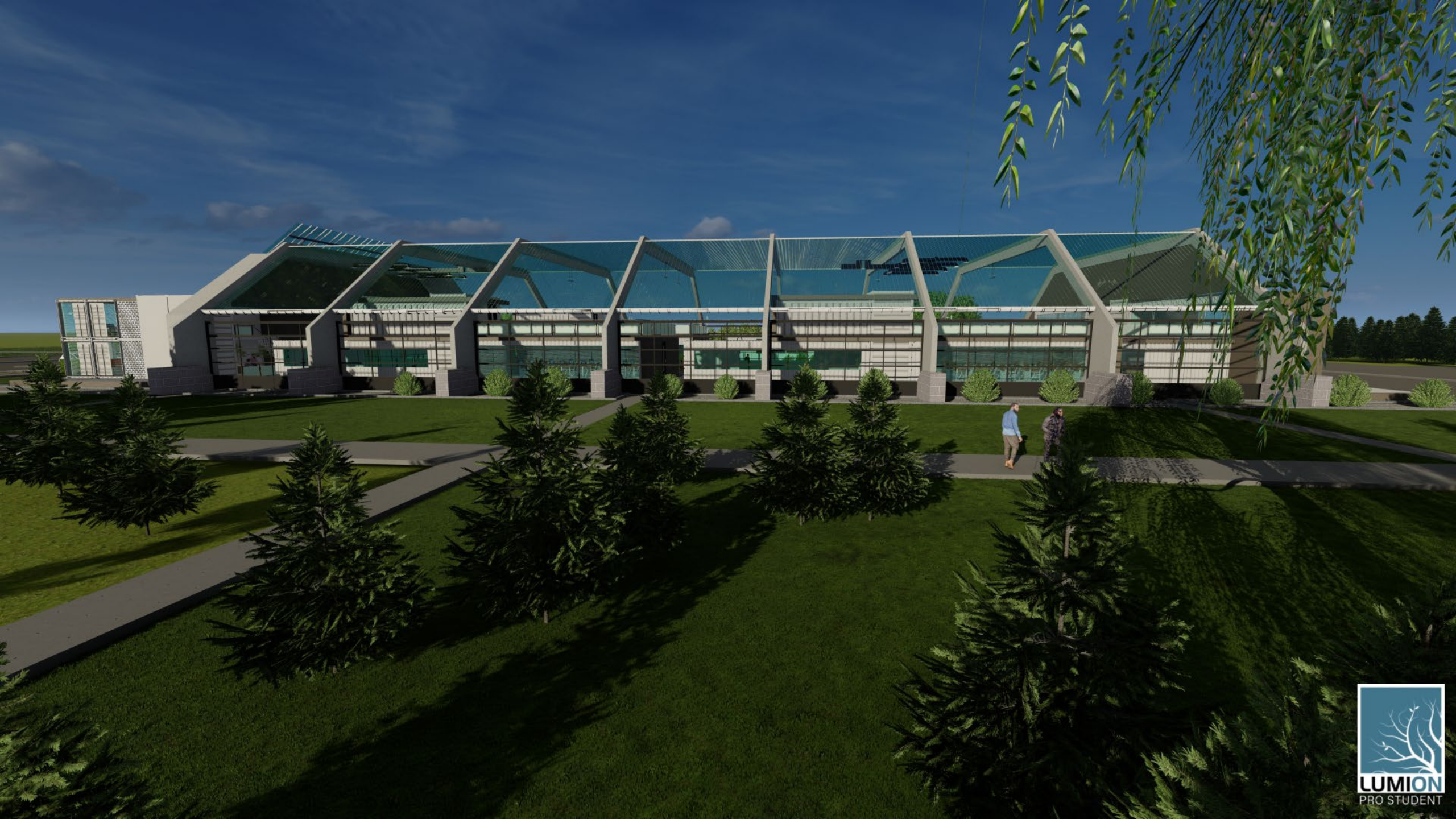
Front Entry



Peace Garden









THANK YOU

