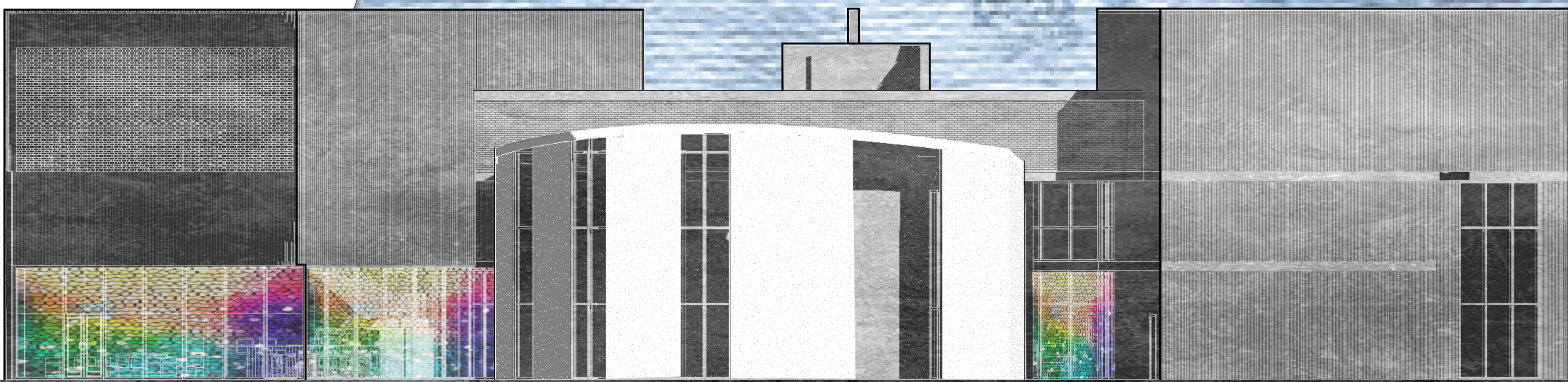


# THE CHURCH

# OF THE



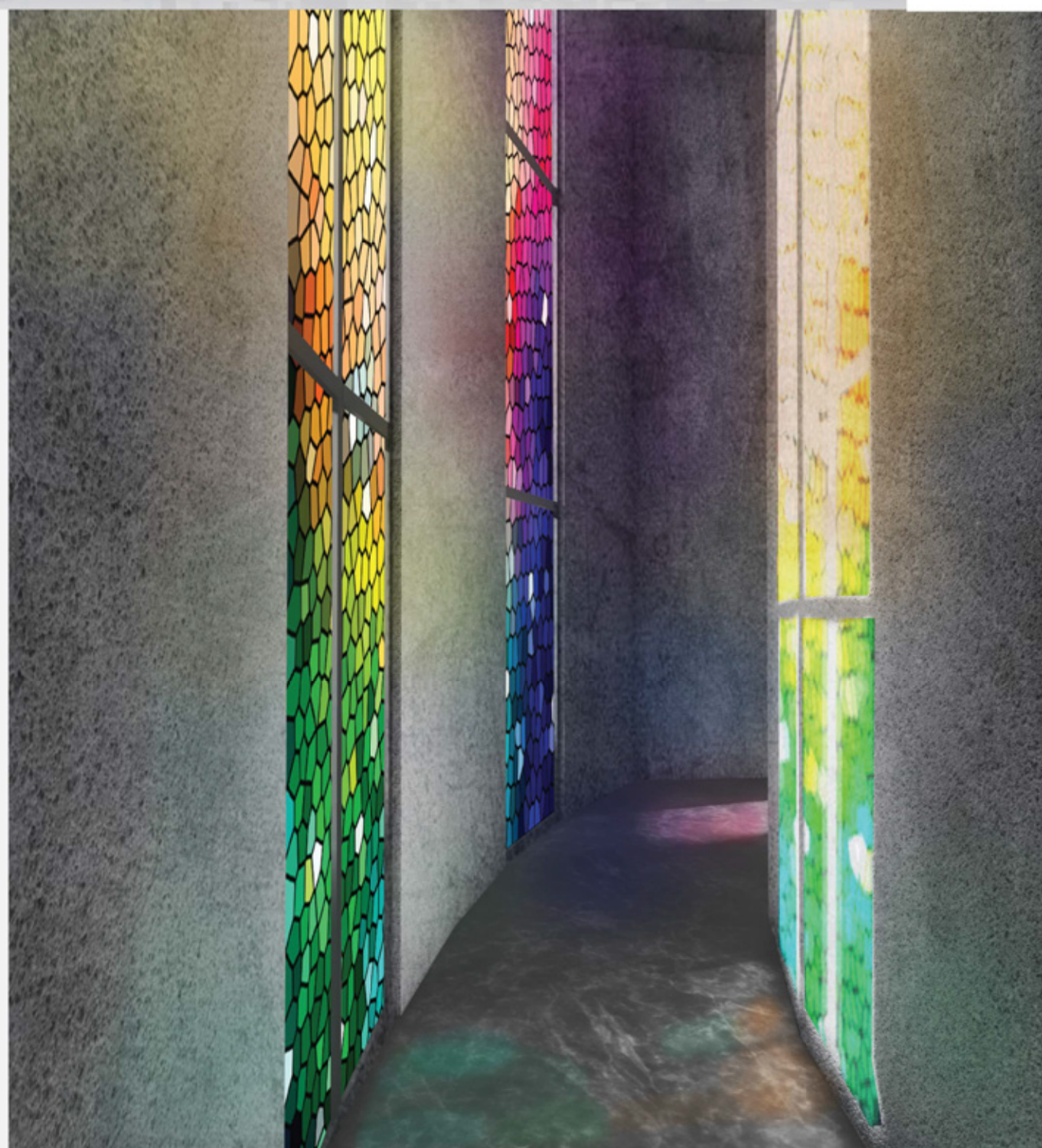
SOUTH EAST ELEVATION

## PROJECT GOALS

- To move people through architecture.
- Design something that houses something greater than it is, however is a reflection of what's inside.
- Design a space that revitalizes the church by taking the original purpose for the church and bringing it into modern context.
- Create an exciting place for people come socialize on a daily basis.



Old cathedrals were a source of inspiration due to their ability to affect people just by stepping foot into the building. Why are these buildings so powerful? their use of light and material are a reminder of God's presence. There are lots of testimonials that these buildings make people feel something despite differential beliefs. Their design was sourced around the metaphors of christian faith.



Light is one of the most important uses of imagery in this design. It's a tangible phenomenon that is critical to life. Without it we could not exist. In the bible God is described as light himself. The stain glass windows are used as a reminder of God's light. When illuminated, it creates color paintings that dance along the floors and walls throughout the building. It is one of the main assets of this design.



The cross was created to inflict the most extreme pain a human can experience. It's intriguing that it is the symbol for hope in the christian faith. It's now a reminder of the death Jesus once experienced. The cross is placed at the center of this design in the chapel. It spans across the whole building supporting the 2nd and 3rd levels. There's an opening of light that shines on the cross illuminating it's shadow on the walls.

Photo by Archidave



DOWNTOWN FARGO, ND

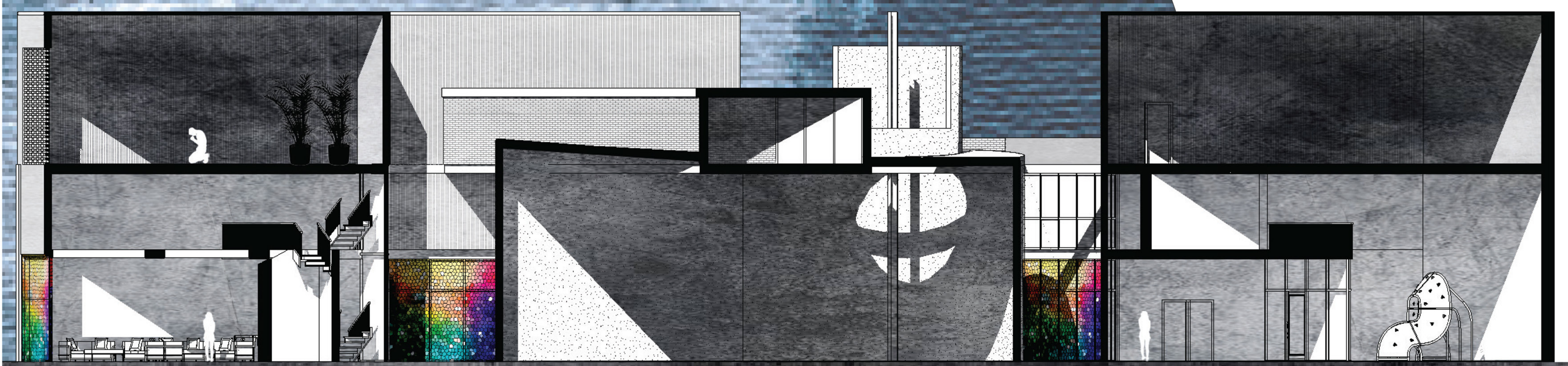
Churches undoubtedly serve as an inspiration for many architects. Their emotional and physical presence to move people is undeniable. However, we can see a shift in their design and meaning through time. As the world changes so does the physical church building and our understanding of their light and material. From the Gothic cathedral to American sprawl, the desire for beauty has more and more turned into rational practicality. This problem not only affected the aesthetics of these buildings but can also has high probability of affecting the spiritual encounter that can happen through their design. The beginning church serves a different purpose than what we see in America today. In the bible we see how the first Christian church functioned, "And all the believers met together in one place and shared everything they had. They sold their property and possessions and shared the money with those in need. They worshipped together at the temple each day, met in homes for the Lord's supper, and shared their meals with great joy and generosity-- all the while praising God and enjoying the goodwill of all the people" (Acts 2:44-47). The design proposal at hand is to take the old and the new to make something that resembles previous times in a modern context. By encouraging people to understand the meaning of the church better through moving architecture by using light as a reminder of God's presence and creating a space for developing everyday community in the heart of the city.



COMMUNITY SPACE

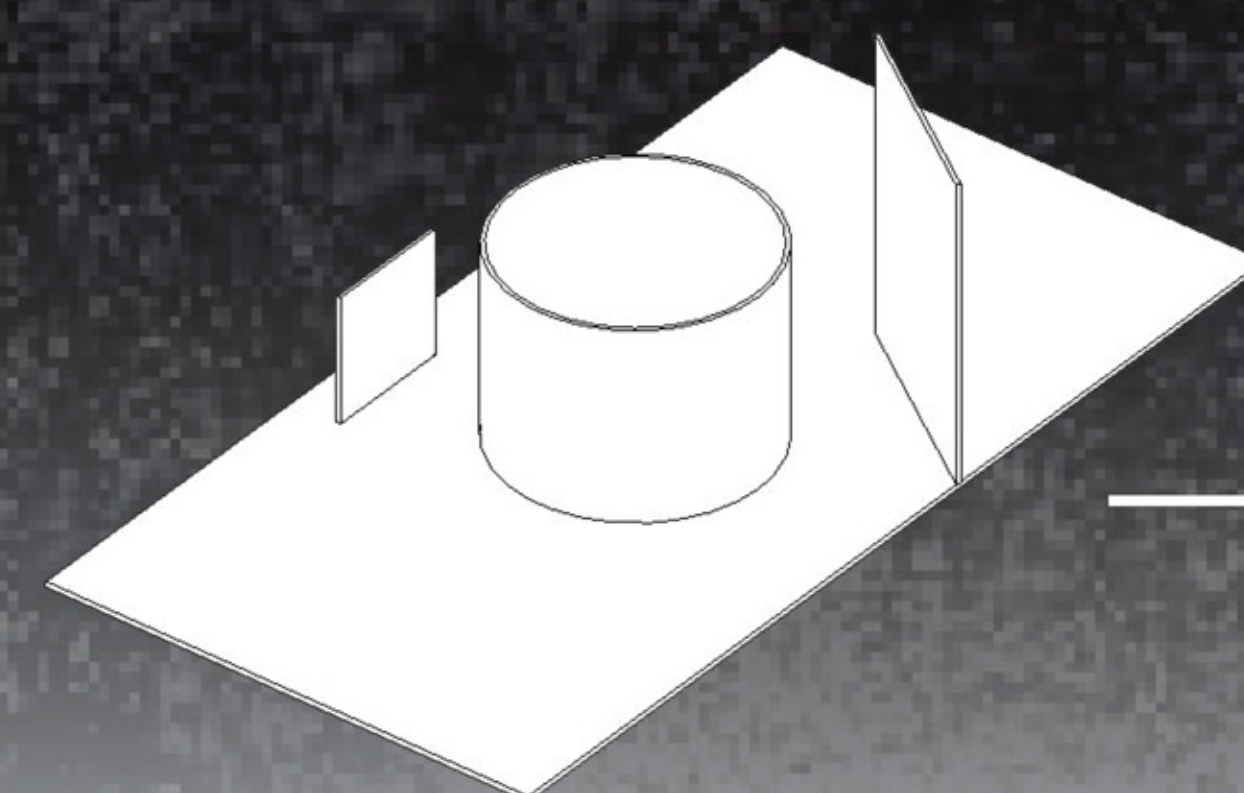
# NEW &

# THE OLD

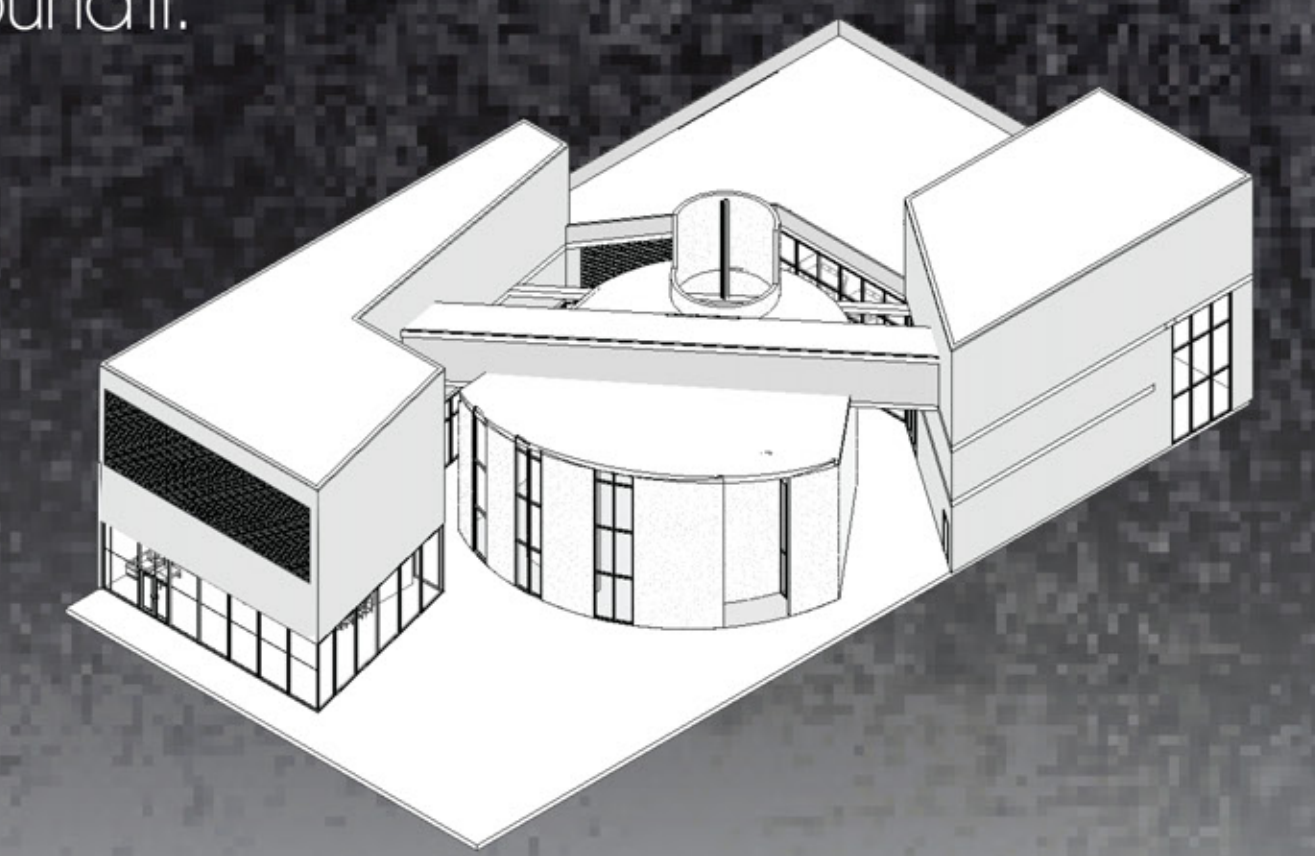


SECTION CUT

The design is focused around designing around the cross, with the chapel space being at the center of the design and the community space revolving around it.

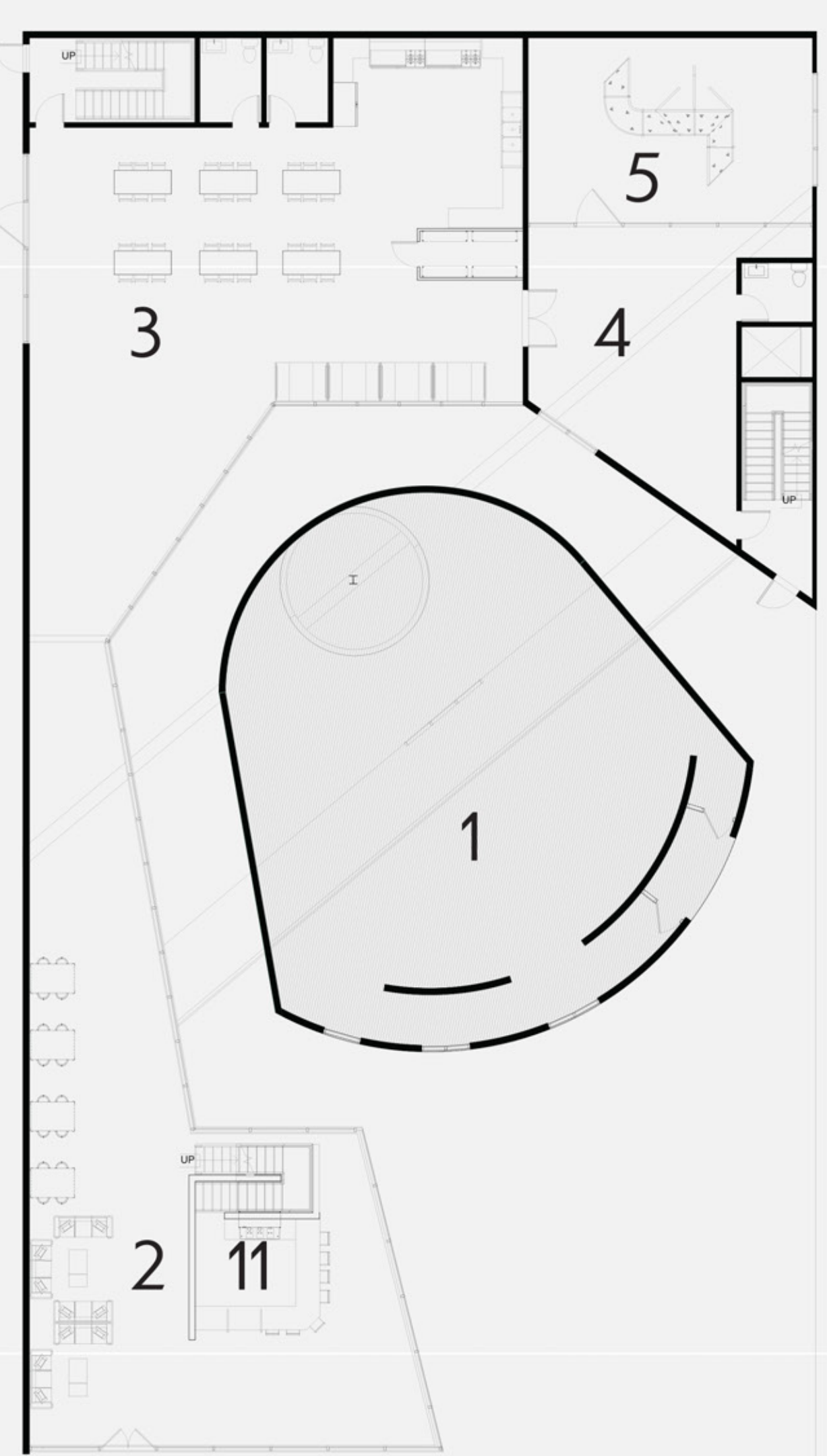


Beginning Stages

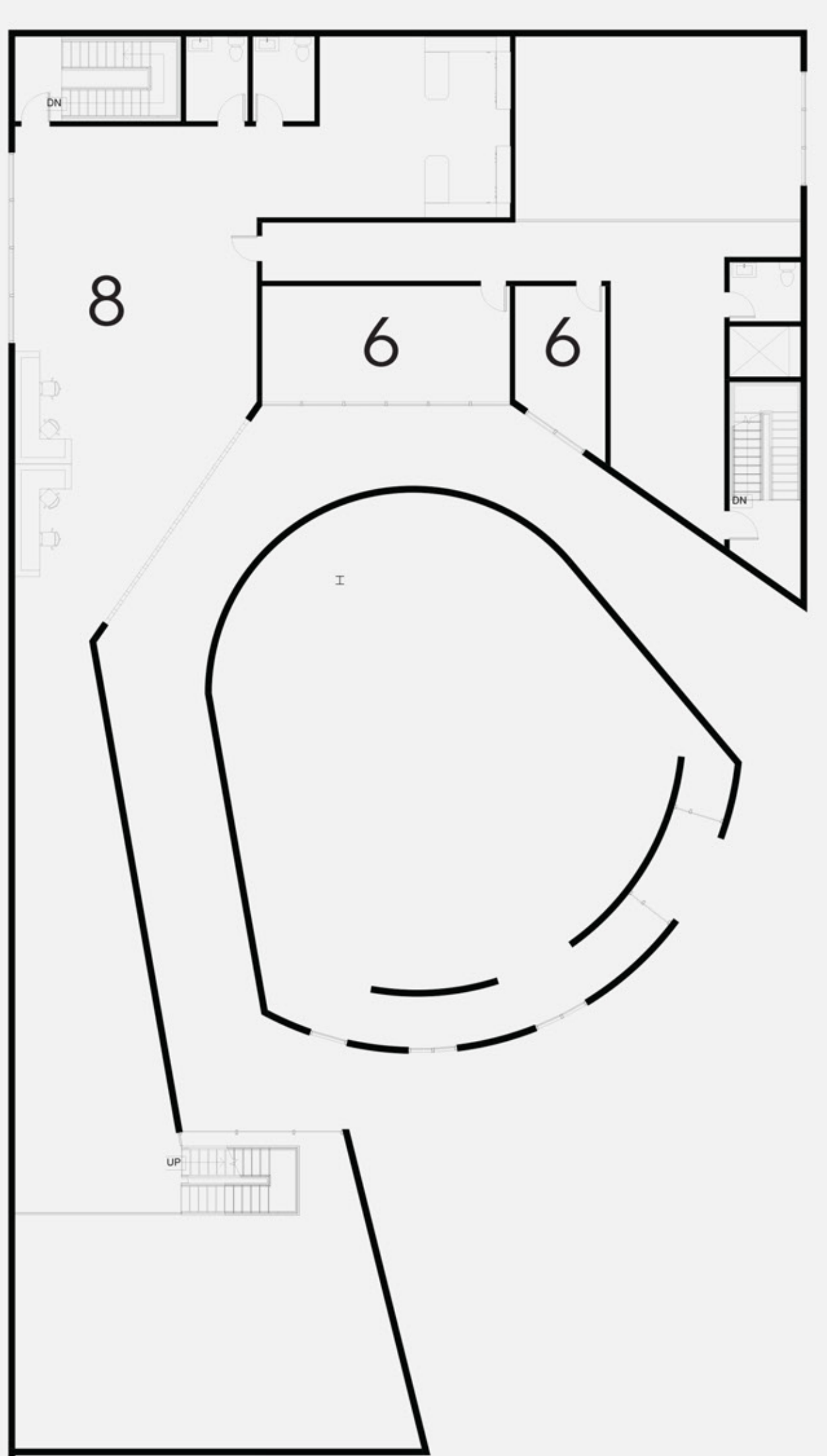


Final Stages

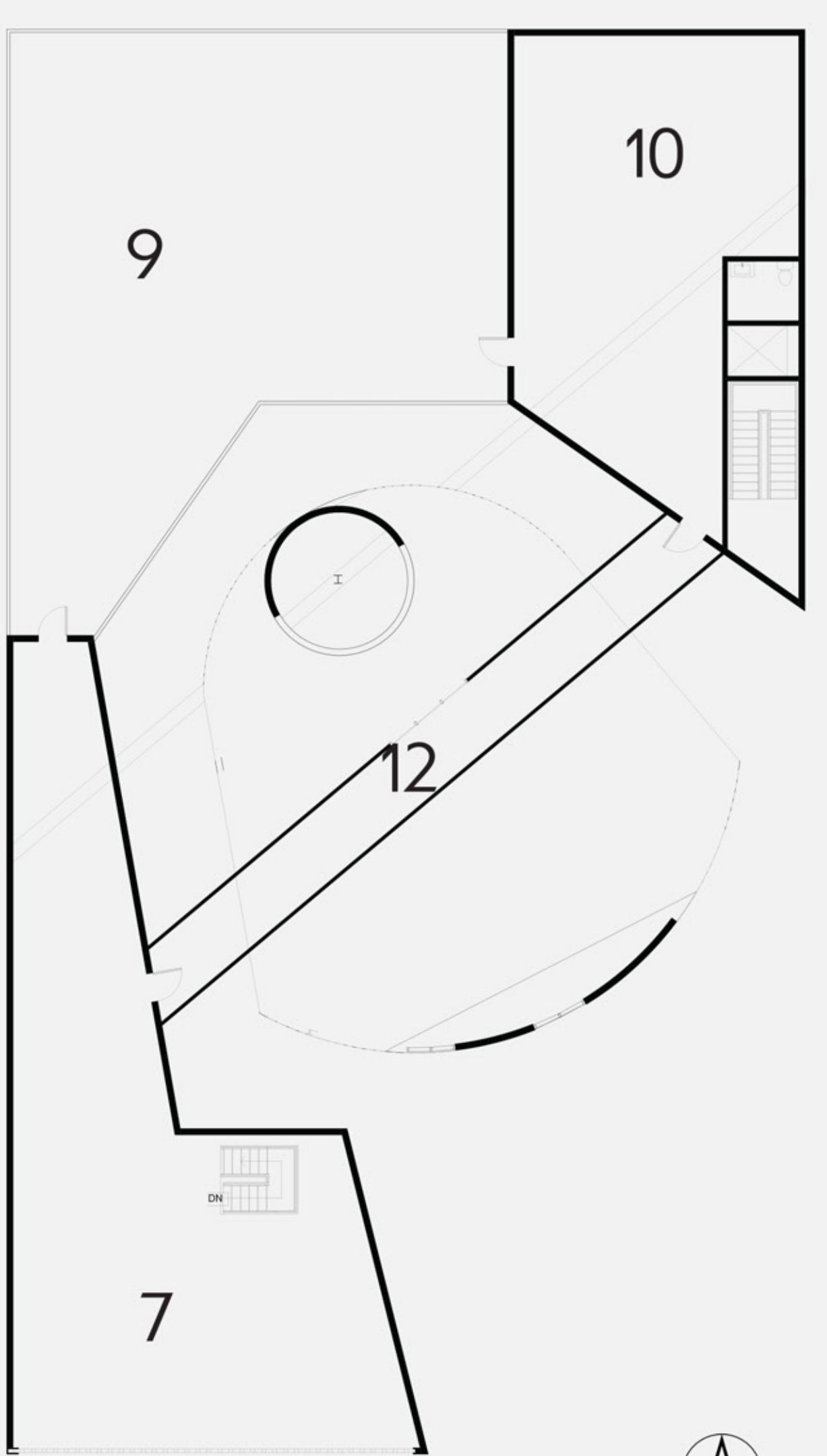
1. CHAPEL
2. COMMUNITY SPACE
3. OPEN KITCHEN
4. KIDS AREA
5. INDOOR PLAYGROUND
6. CLASSROOM
7. REFLECTION SPACE
8. OFFICES
9. OUTDOOR GARDEN
10. GATHERING SPACE
11. COFFEE BAR
12. BRIDGE



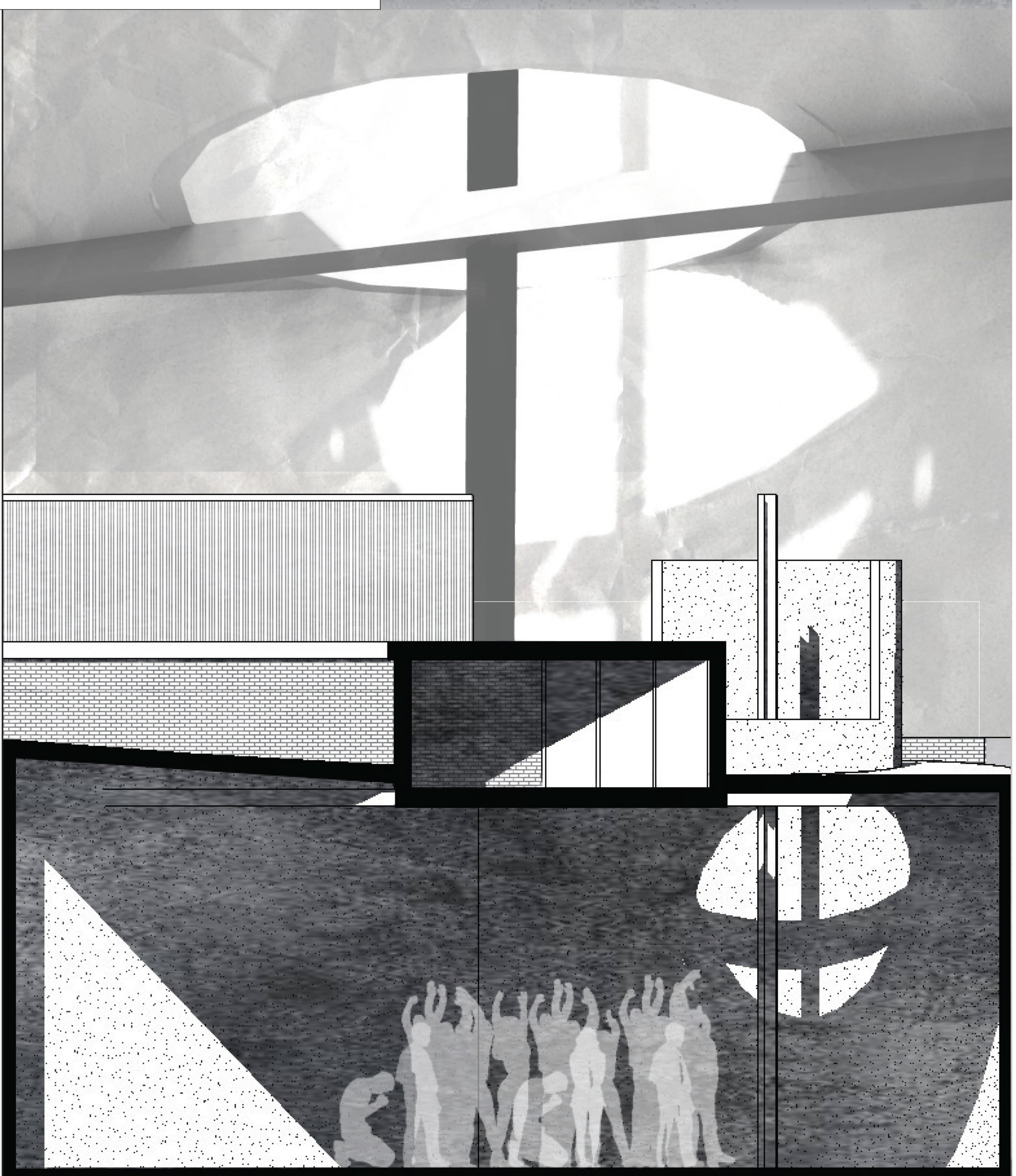
FIRST FLOOR PLAN



SECOND FLOOR PLAN



THIRD FLOOR PLAN



CHAPEL SECTION CUT

In more modern times (after the 17th century) we see that metaphors and overall image of the church changes immensely. This is most likely due to changing outlook on culture and society. Practicality and rationality are two words that could describe this outlook. This has left less room for people to seek out spiritual needs, as well as architecture that caters to this specific need. Churches were used as the town community center, the main place to gather, they are now being turned into apartment buildings, gyms, or left empty until Sunday. This is problematic because it leaves less space for believers to connect, encourage, and worship on a more regular basis. The need for churches has been lost and leaves people with less connection to spirituality. This has happened through a slow progression through time. One of the causes of this, was the sprawl movement. This movement didn't just push people out of cities, but also churches. This resulted in it becoming a destination verses an everyday part of life.

PERFORATED WALL

BRIDGE

STAINED GLASS

SOUTH ELEVATION

