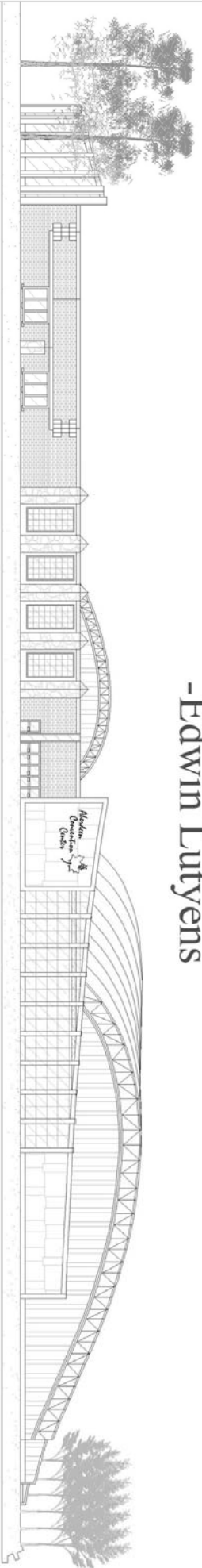
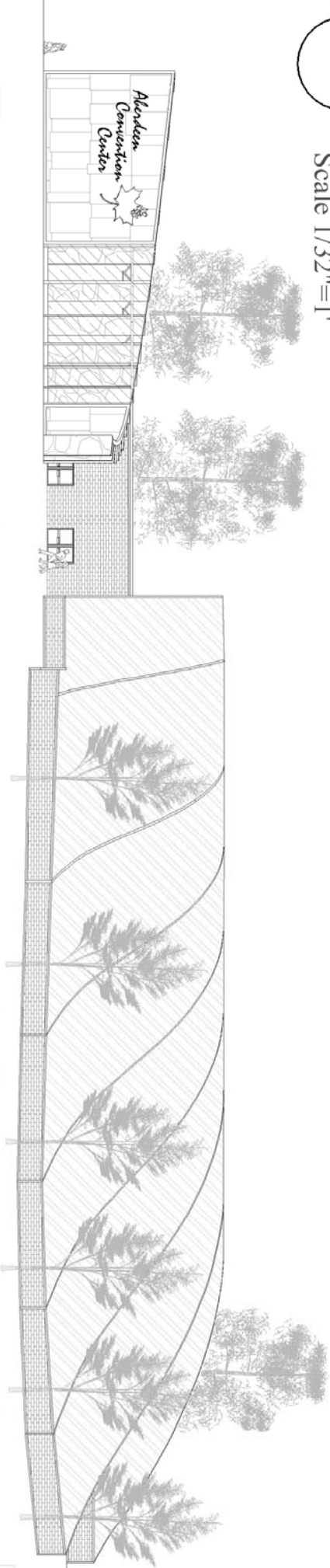


"There will never be great architects or great architecture without great patrons."
-Edwin Lutyens

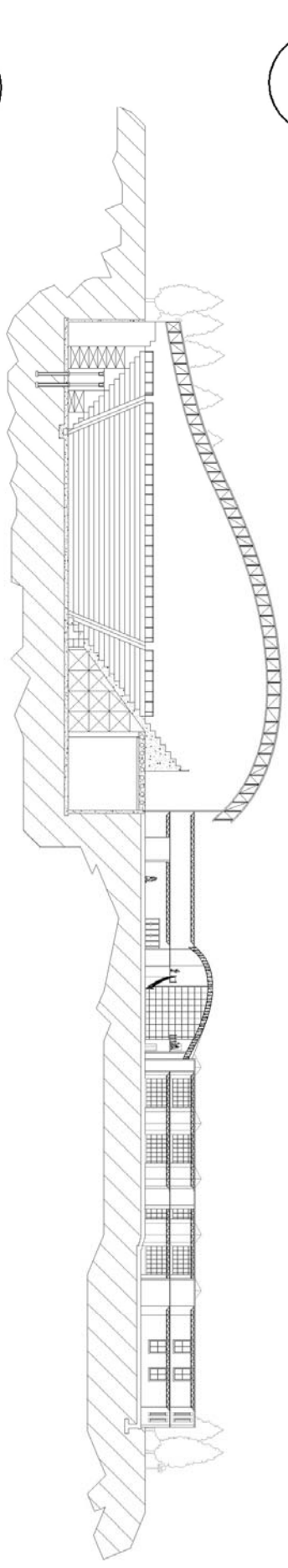


North Elevation

Scale 1/32"=1'



West Elevation

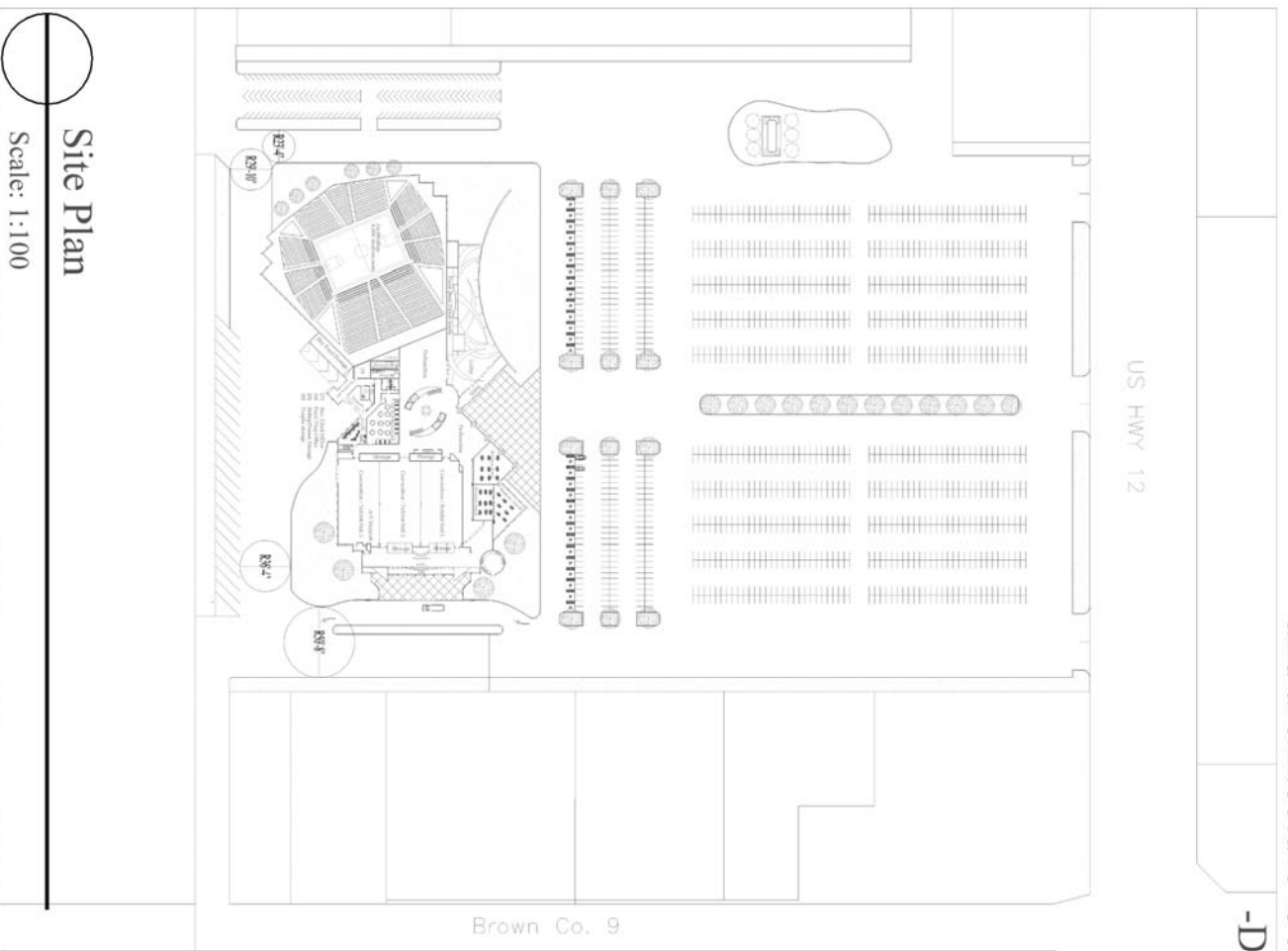


East-West Section

Scale 1:50

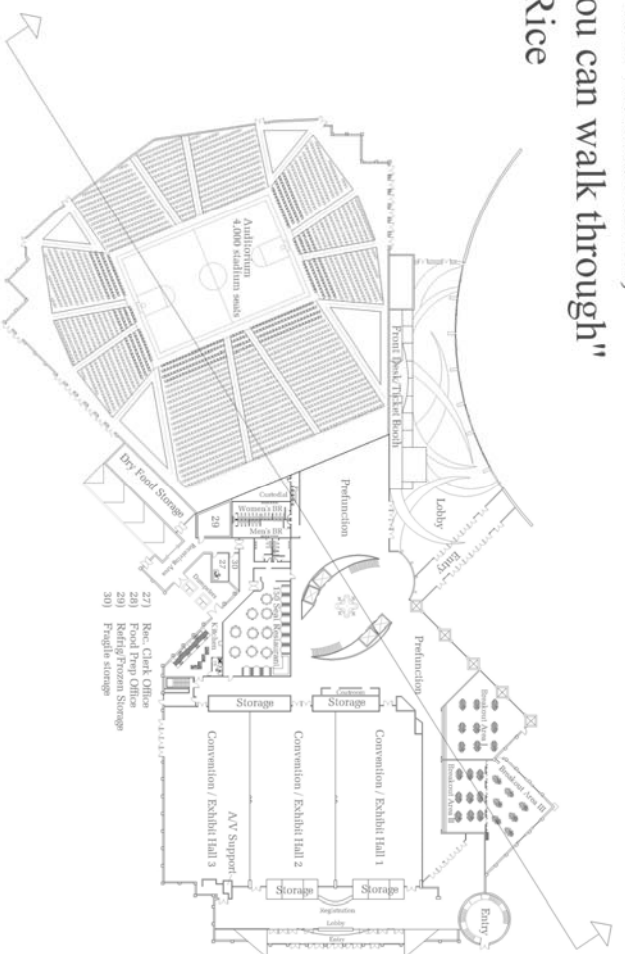
"There are three forms of visual art: Painting is art to look at,
 sculpture is art you can walk around,
 and architecture is art you can walk through"

-Dan Rice



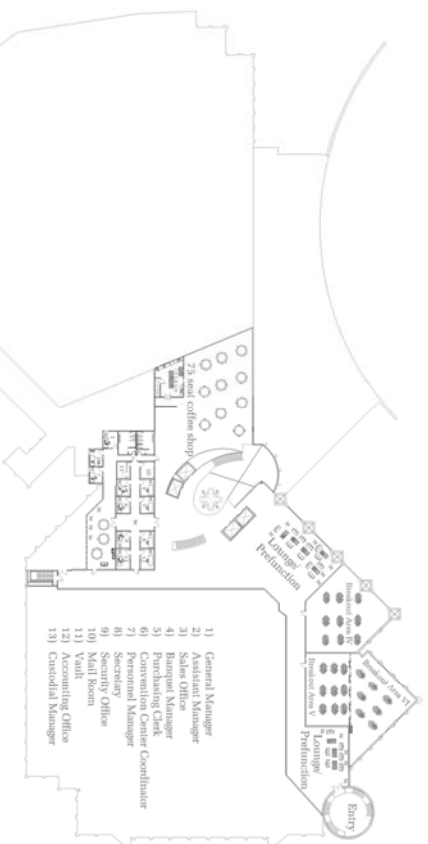
Site Plan

Scale: 1:100



First Floor Plan

Scale: 1/64" = 1'

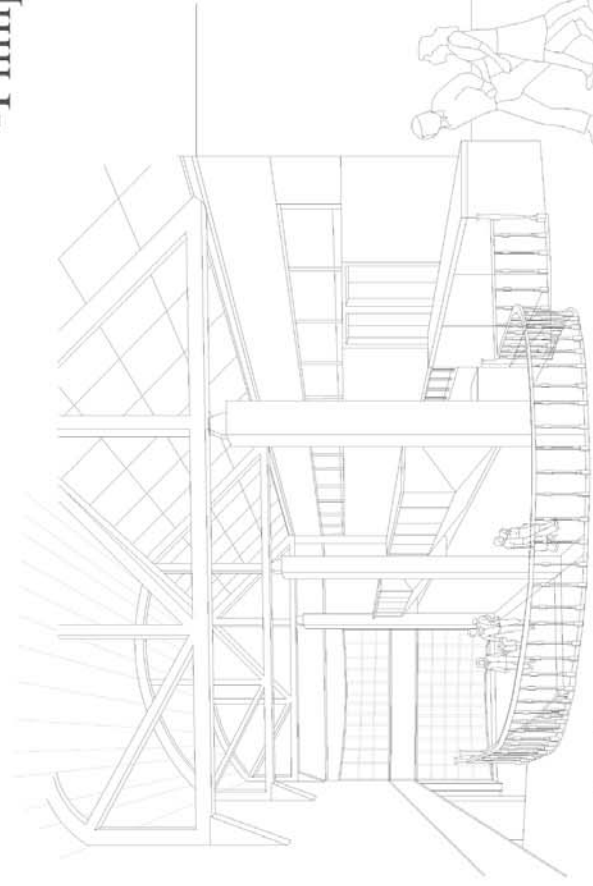


Second Floor Plan

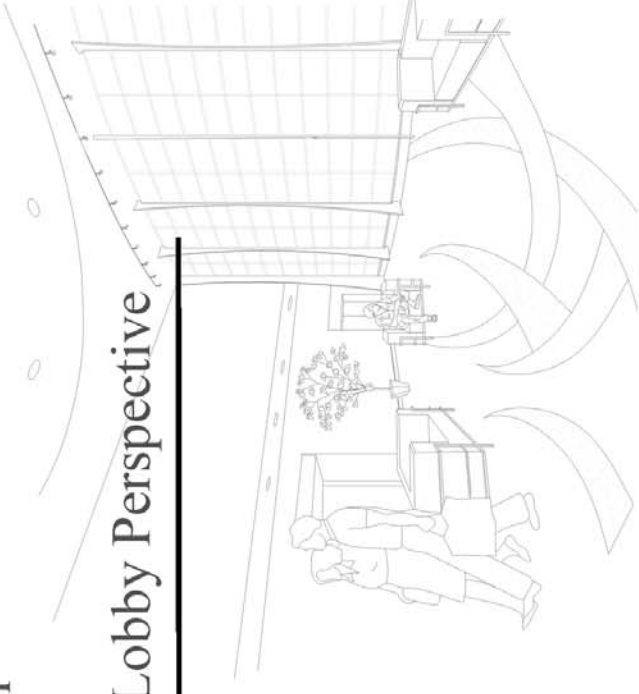
Scale: 1/64" = 1'

"All architecture is shelter, all great architecture is the design of space that contains, cuddles, exalts, or stimulates the persons in that space."

-Philip Johnson



Atrium Perspective



Lobby Perspective



Flexible Arena Perspective

The flexibility of space, the comfort of the user, and the aesthetic of design make each space within the overall design important links that, in themselves, possess unique attributes which ultimately leads to a whole that is greater than a mere sum of its parts.

"Architecture, of all the arts, is the one which acts the most slowly, but the most surely, on the soul."

-Ernest Dimmet



Photovoltaic panels are installed within the roof system utilizing the sun's natural energy to supplement the on-grid energy usage by the building. Since the panels are used as a mere supplement, the load of the 155 watt panels takes over the system only during peak usage hours. This system is monitored by a switch that determines when the system is better supplemented. According to studies of similar instances, the panels could render the building up to 70 percent self-sufficient during peak usage. This is a considerable load relief which not only maximizes cost saving strategy but also moves toward environmental conservation.



Grey water issues become another pressing matter when it is noted that a facility of this size and function can use, during peak times, enough water to supplement 120-130 homes. All of the sinks, fountains and kitchen faucets will supply pristine drinking water-but why use drinking-quality water to flush toilets? Eliminating unnecessary use of drinking water drawn from the municipal system by 50% reduces water returned to the treatment system to almost nothing. The Center's recycled water comes from an on-site treatment system that collects the waste water from all drains, filters and cleans it, and puts it back to use.

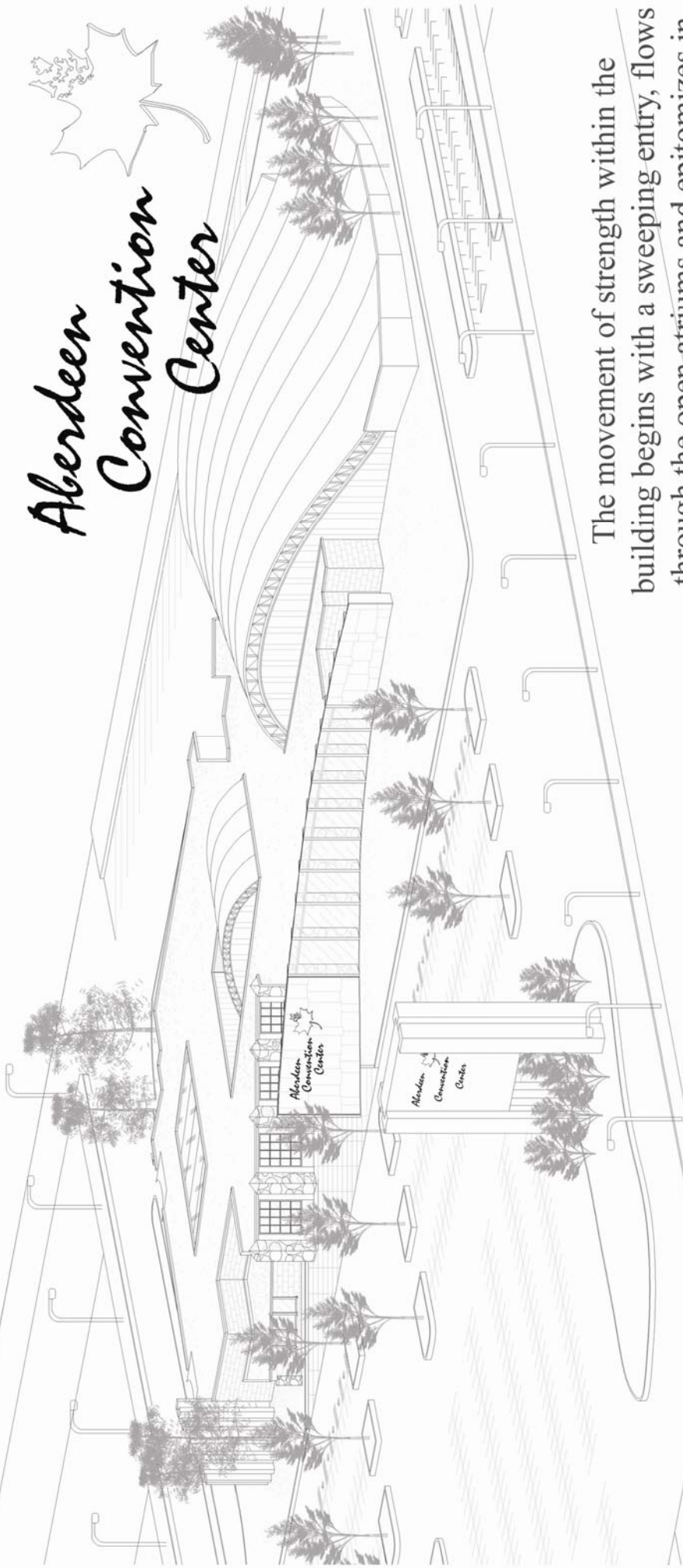
Drinking water from the municipal system is delivered from a central plant to a building, used once, and then returned to another plant for treatment. Moving a single gallon of water through the Aberdeen system requires pumping it through 4 miles of pipe, treating it with 17 milligrams of chemicals and using enough energy to drive a car 25 feet. Most often, that gallon of water is simply used to flush a toilet.



The ultimate goal and overriding concept of this design falls on not only the advancement of the Great Plains ideals but also in preserving the life and environment that engulfs it. The waves on the sea of the Great Plains of South Dakota break with the sweeping winds, reflecting an image on the soul of the land. This feeling is conveyed to the form of the building's design. The rolling wave-like roof, the wisp of the sweeping entry, and the heart of the spaces inside bring together an ultimate good, bringing this unique culture a splendid place.

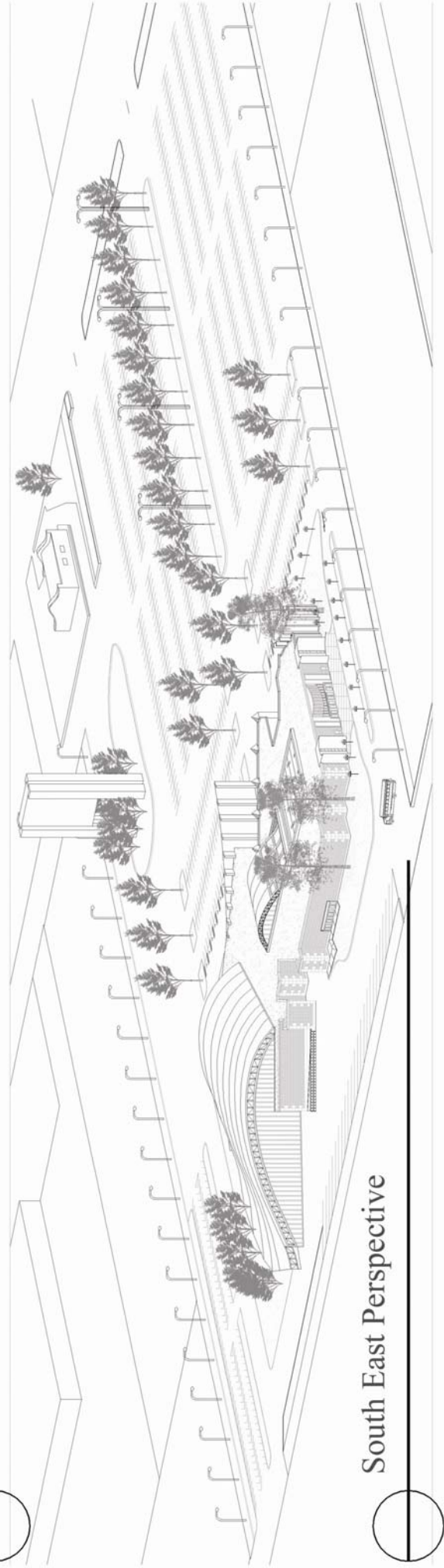
Ryan Schlosser
2005 Thesis
North Dakota State University

Aberdeen Convention Center



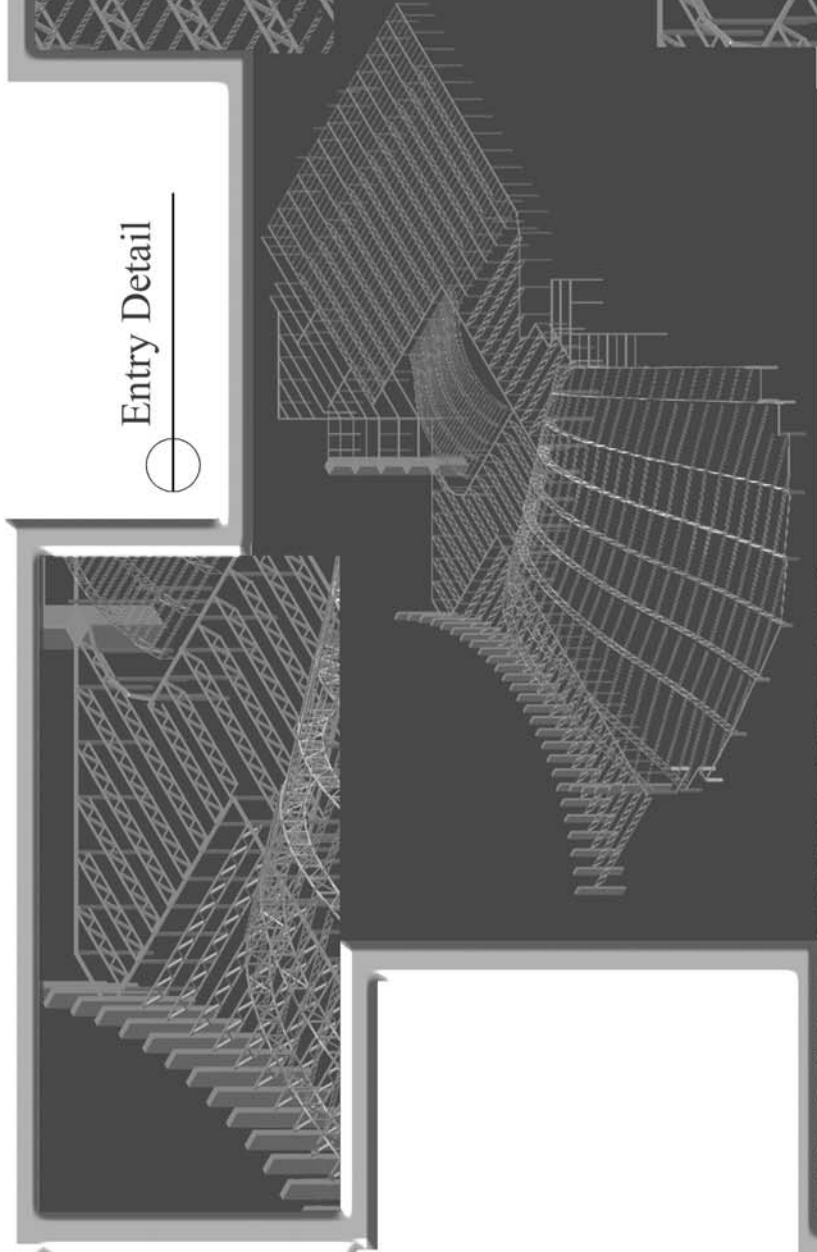
North West Perspective

The movement of strength within the building begins with a sweeping entry, flows through the open atriums and epitomizes in the main function areas.

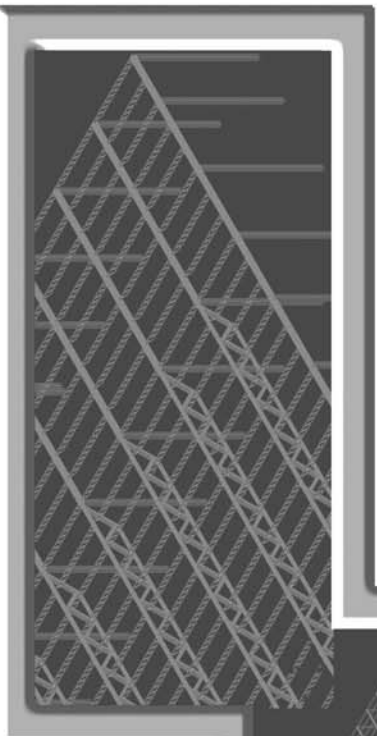


South East Perspective

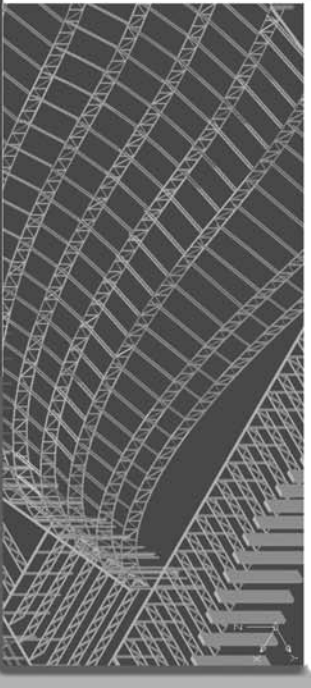
Entry Detail



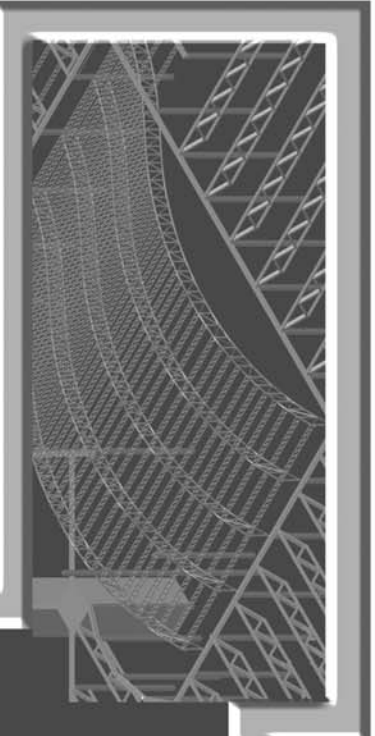
South East Detail



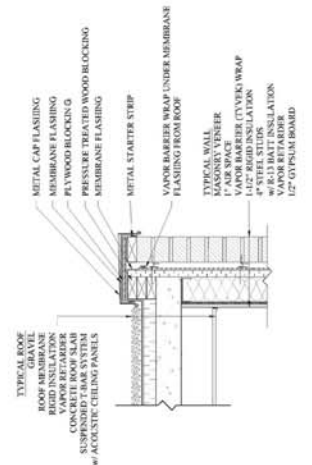
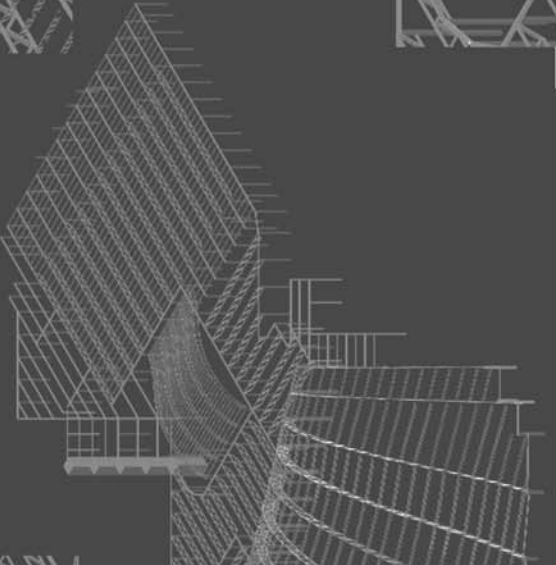
Arena Detail



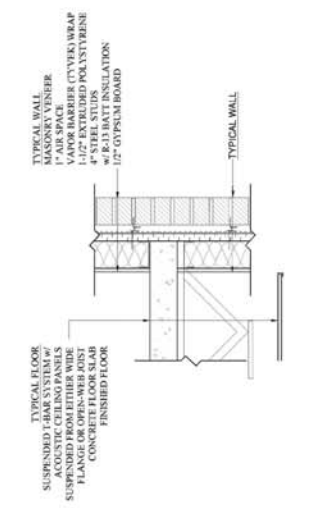
Atrium Detail



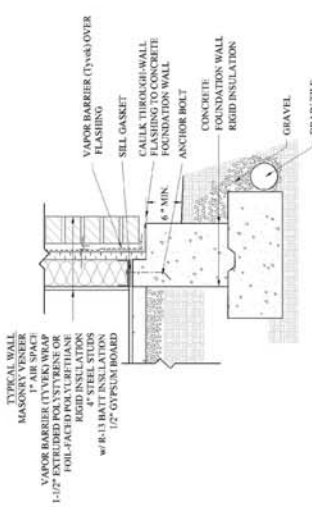
Structure Model Perspective



ROOF/WALL DETAIL



FLOOR/WALL INTERFACE DETAIL



BASE OF WALL DETAIL