

MTNS EDGE COMMUNITY CENTER

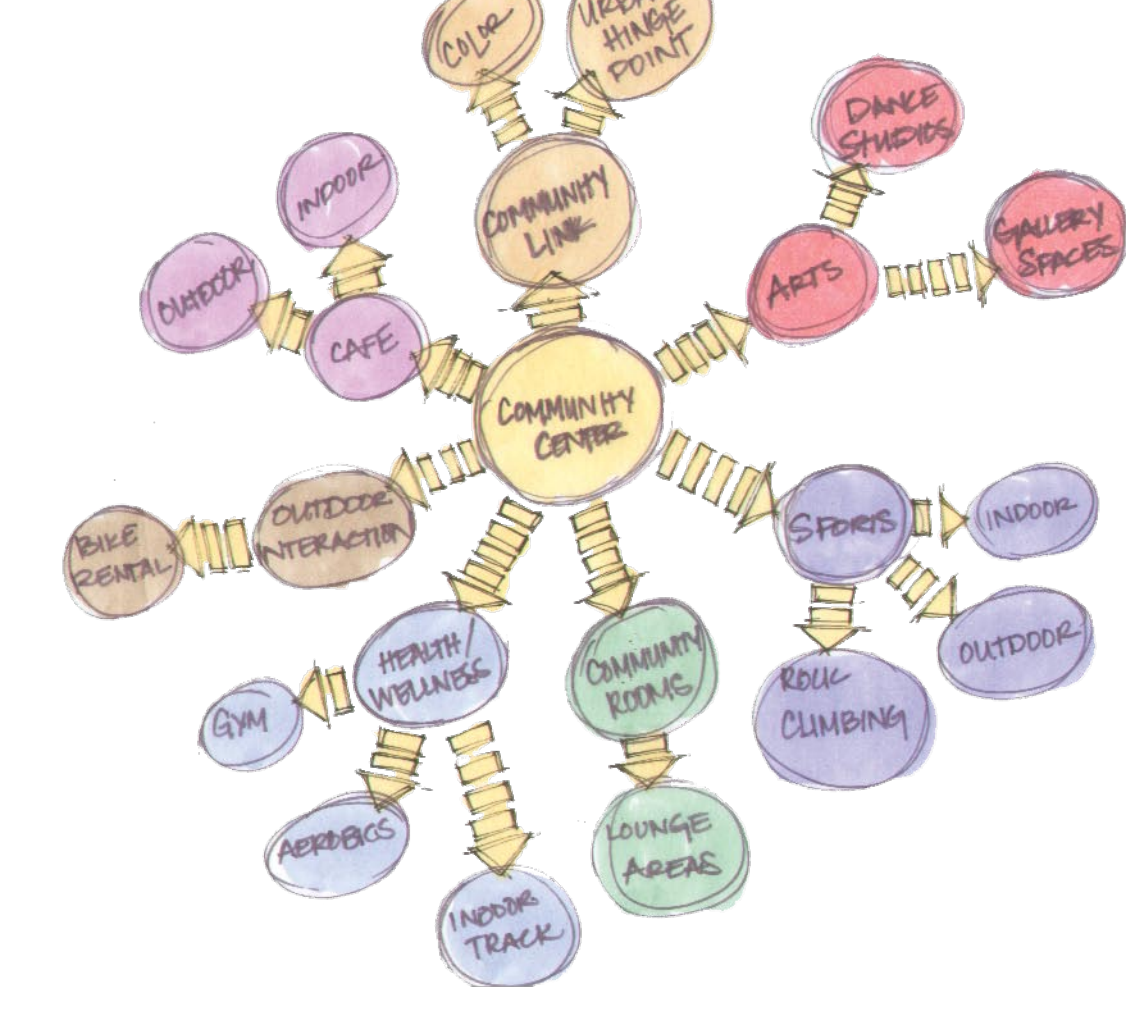
There is a *fountain of youth*: it is your mind, your *talents*, the *creativity* you bring to your **LIFE** and the lives of people around you. When you learn to tap this source, you will truly have defeated age.

Kootenai County, Idaho
Brit Douglas Thesis 2006

VISION

Providing a facility for individuals of all ages to utilize on a daily basis can provide opportunities that may not be available elsewhere. A new community center can help unify, strengthen and interlock the four surrounding cities, as well as provide a new environment in which area groups can participate in a wide variety of activities. The programs proposed cover a wide range of interests, both external and internal. These include athletics and the arts, as well as personal satisfaction, health, and self-esteem.

DESIGN PROCESS



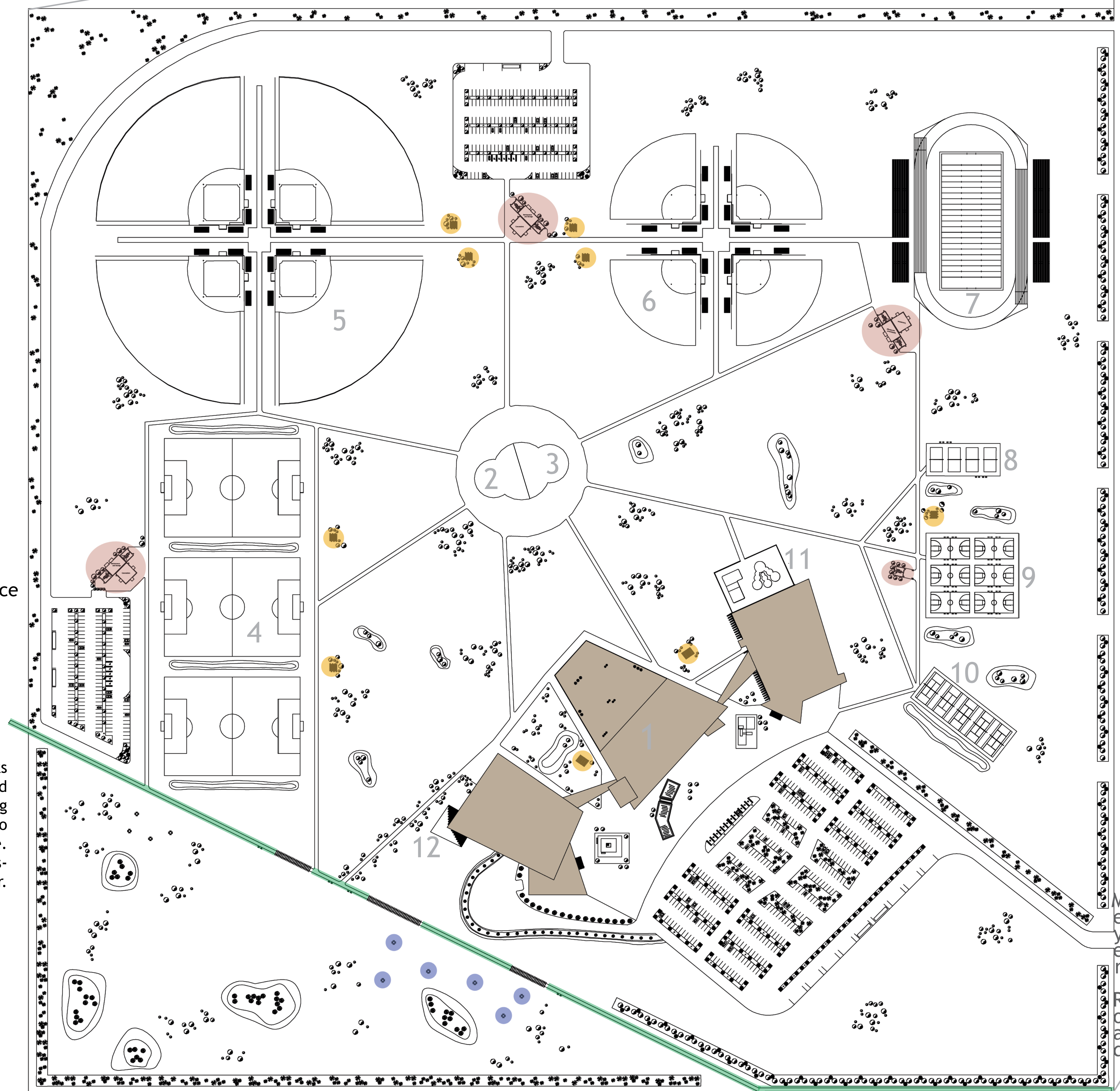
1. Proposed Buildings
2. Playground
3. Skatepark
4. Soccer Fields
5. Baseball Fields
6. Softball Fields
7. Track/Football Field
8. Volleyball Courts
9. Basketball Courts
10. Tennis Courts
11. Swimming Pools
12. Outdoor Eating Space

Outdoor concessions with storage for outdoor maintenance. Included are restrooms for close proximity to outdoor sports and recreation activities.

Abandoned railroad tracks proposed to be converted into a public bike/walking trail that would connect to Downtown Coeur d'Alene. Transform into a cross-country ski trail in the winter.

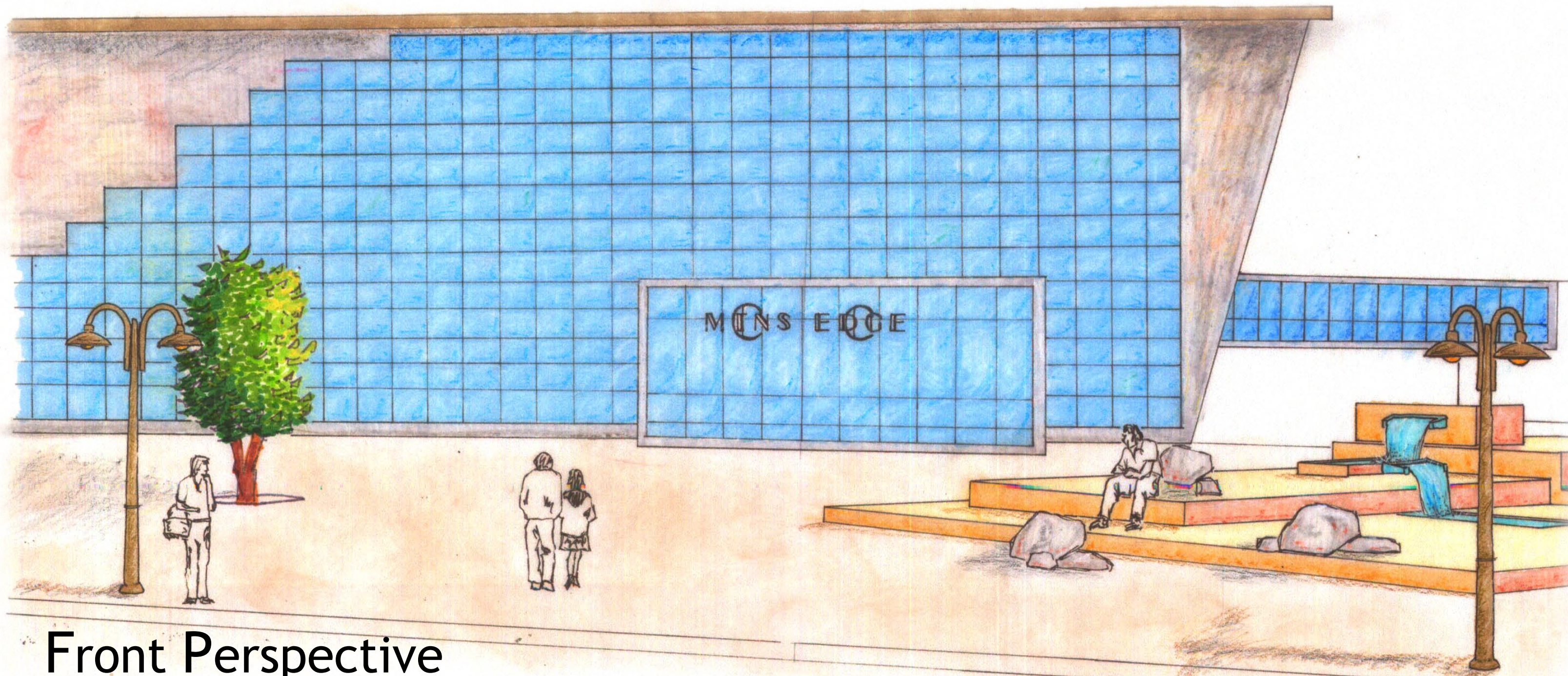
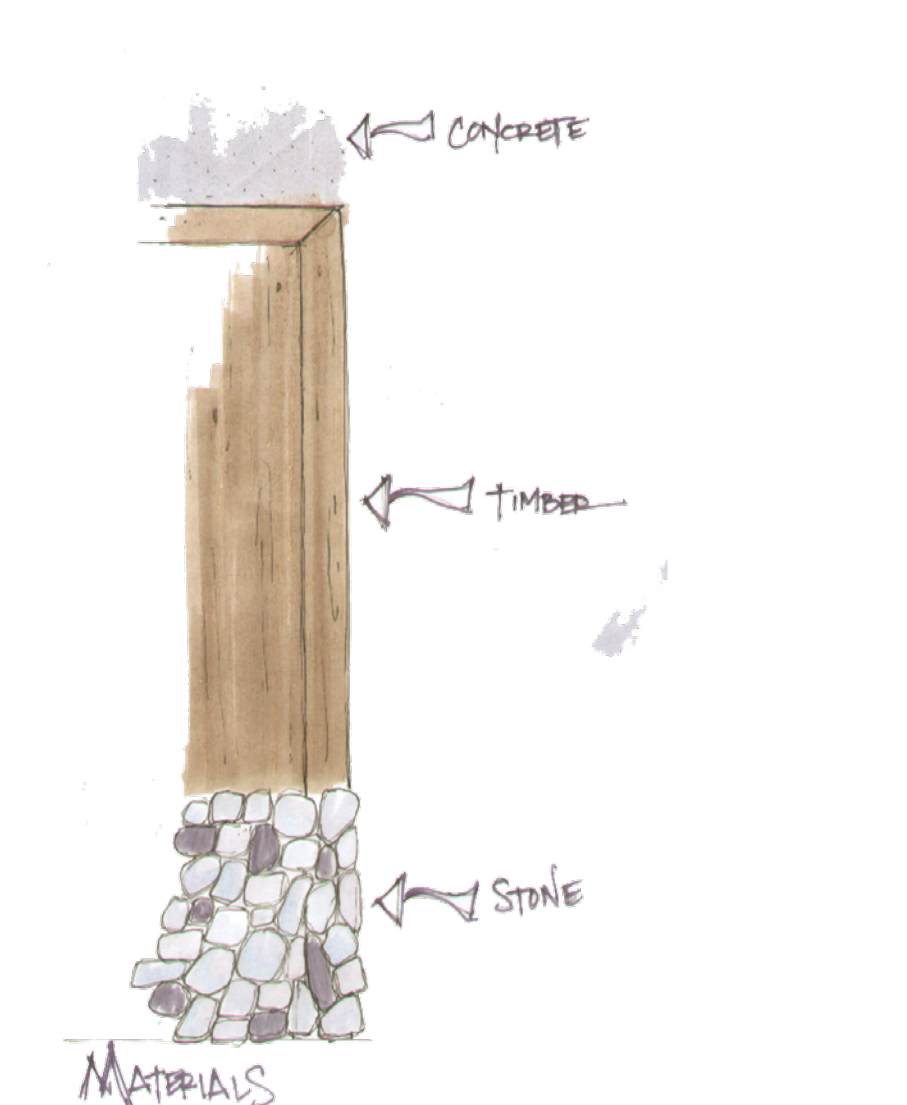
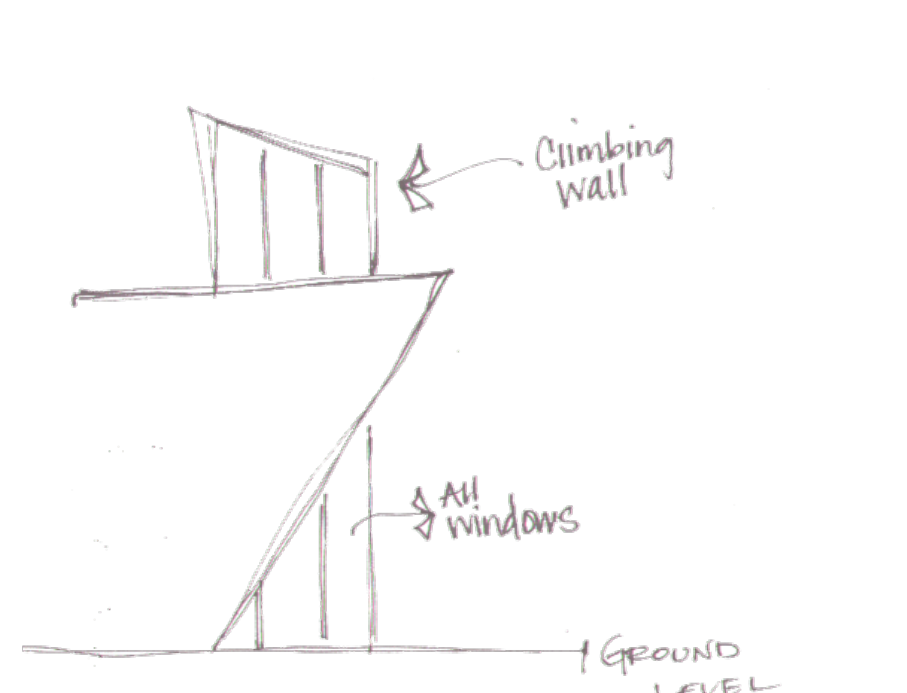
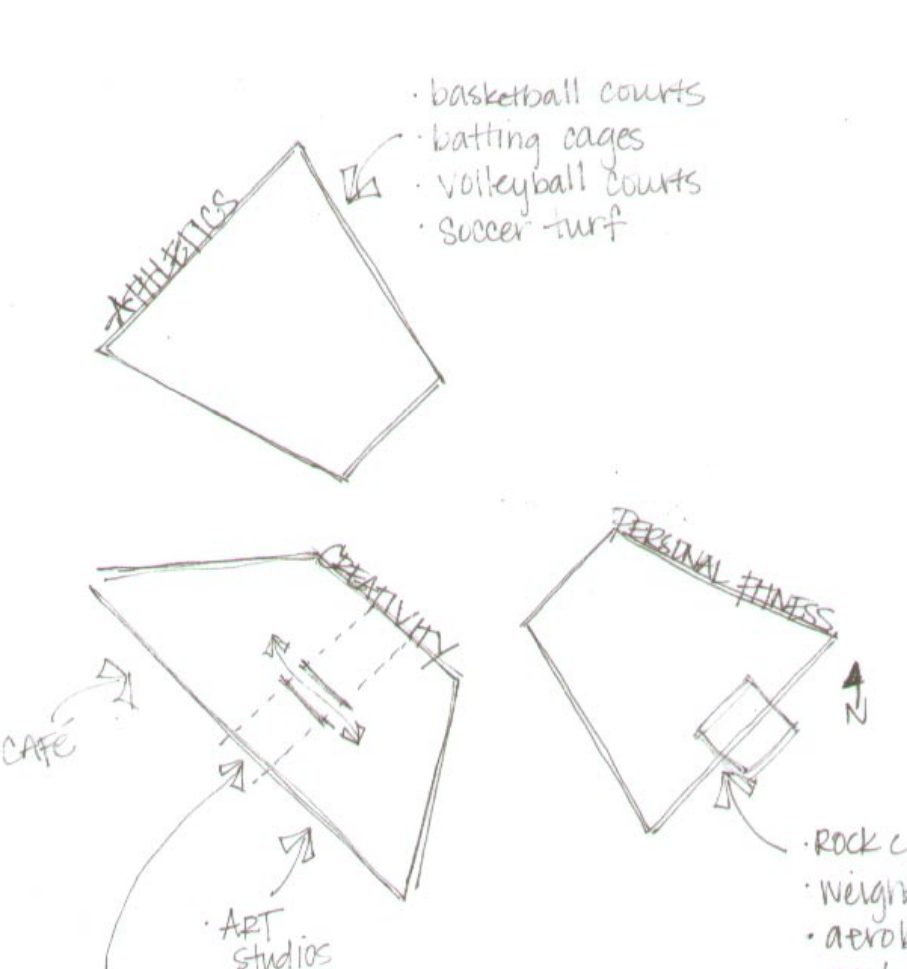
Timber framed pergolas to provide shade and rest areas throughout site.

Picnic areas designed away from outdoor recreational activities to provide privacy and a sense of serenity.

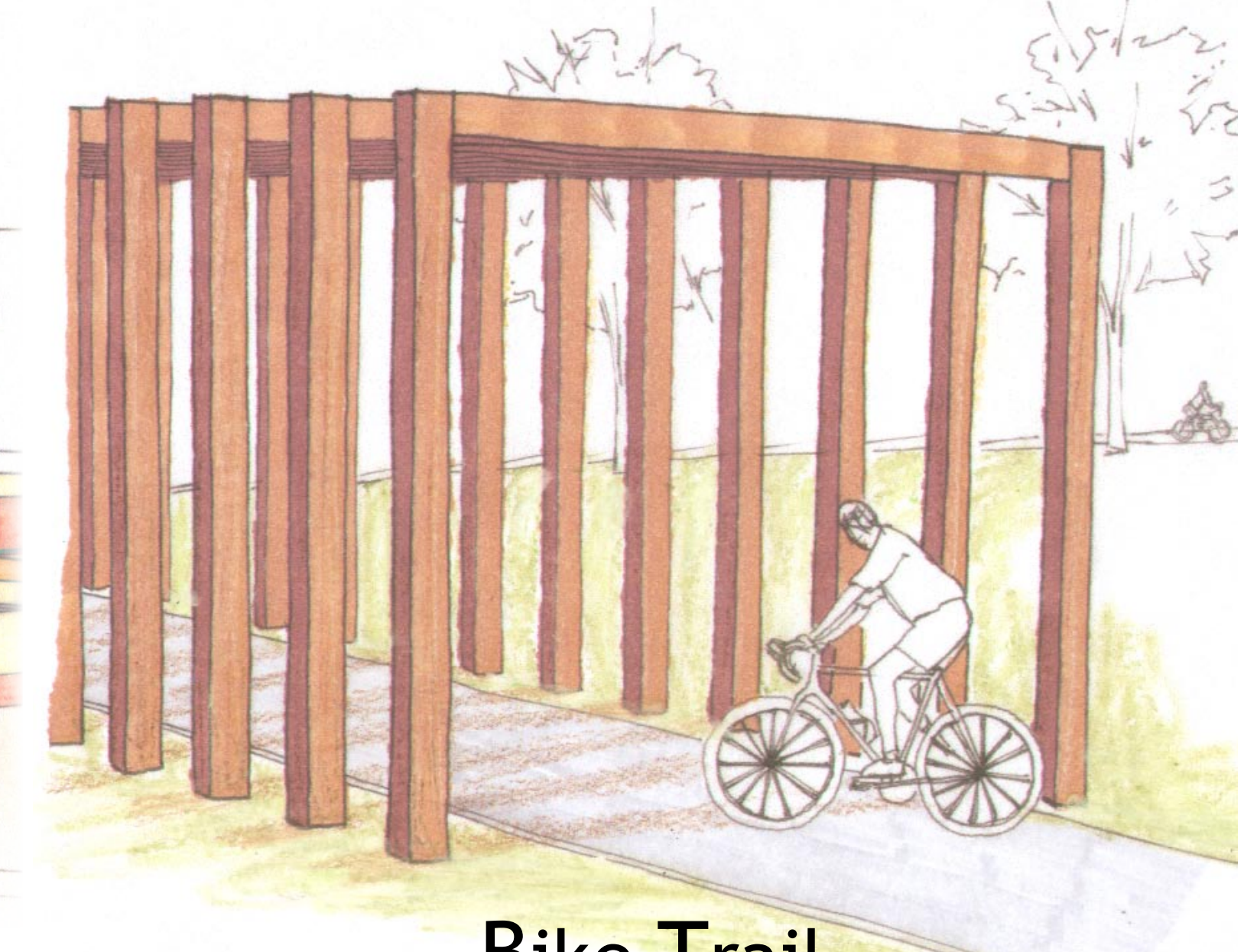


Site Plan

Scale: 0 20' 50' 100'



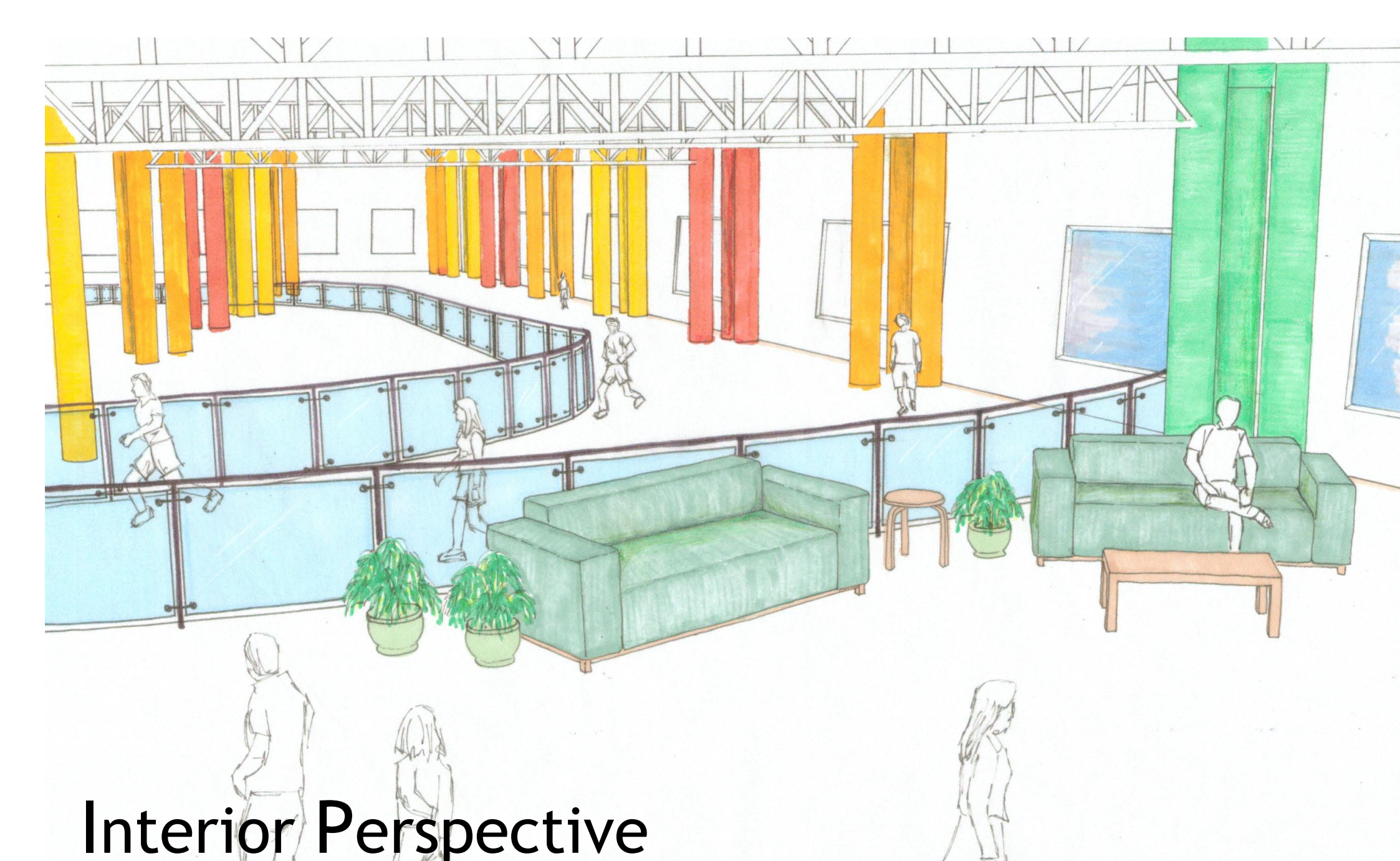
Front Perspective



Bike Trail

The community center has a full menu of recreational activities complimented by spaces for the arts, conference and community rooms that can be rented out for the public use, as well as a drop-in day care. The arrangement of spaces separates the different activities, while still allowing room for shared interaction.

The numerous windows used throughout the buildings provide a good source of natural daylight, as well as adding a very open feeling to the front of the facility. Larger lobby areas aid in reiterating the openness of the spaces.

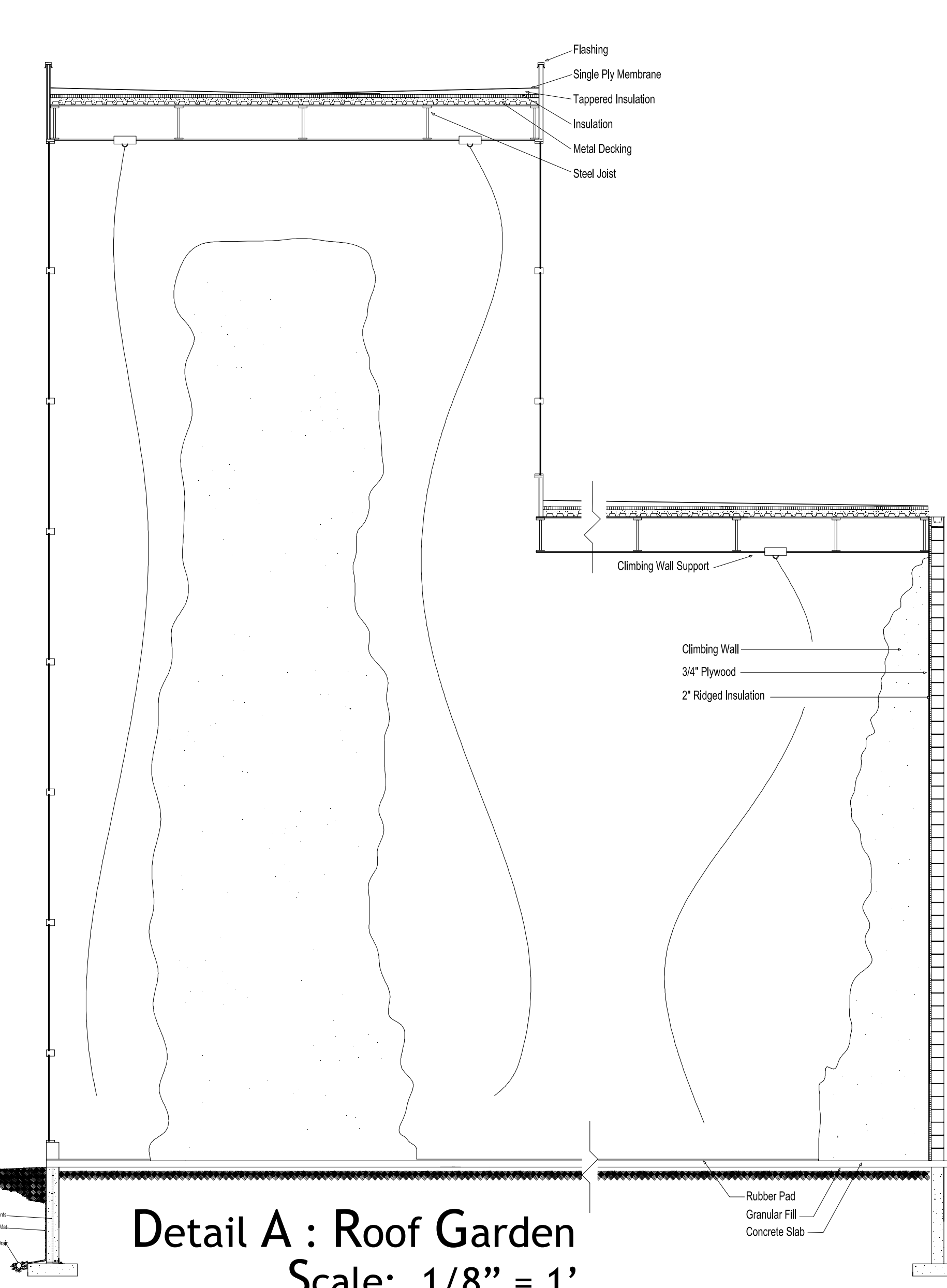


Interior Perspective

Color is energy and has a physical effect on each individual. Each color has fundamental psychological properties that relate respectively to the body, the mind, the emotions and the essential balance between these three.

Red is a powerful color. Its effect is physical; it stimulates us and raises the pulse rate. Representative of physical courage, strength, energy and stimulation. **Yellow** can lift our spirits and our self-esteem. It is the color of confidence and optimism. Representative of emotional strength, friendliness and creativity. **Orange** focuses our minds on issues of physical comfort and sensuality. Representative of warmth, security, passion and fun. **Green** is restful. It is the color of balance. Representative of harmony, rest, equilibrium and peace. **Blue** is the color of the mind and is soothing; it affects us mentally. It stimulates clear thought and calms the mind. Representative of intelligence, communication, and reflection.

Color can play a large role on the activity that occurs in space; it can be a significant factor in determining the emotion and reaction to different spaces.



Detail A : Roof Garden
Scale: 1/8" = 1'

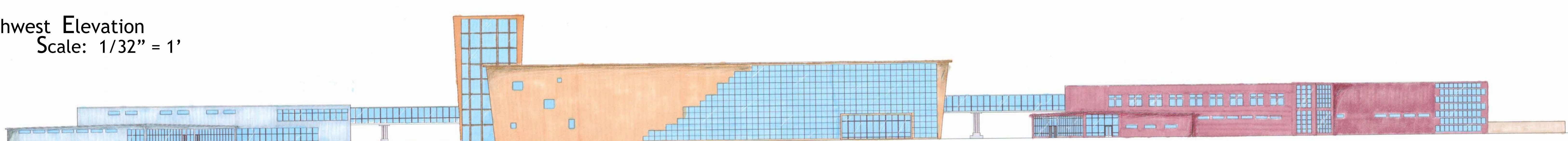


Skate Park

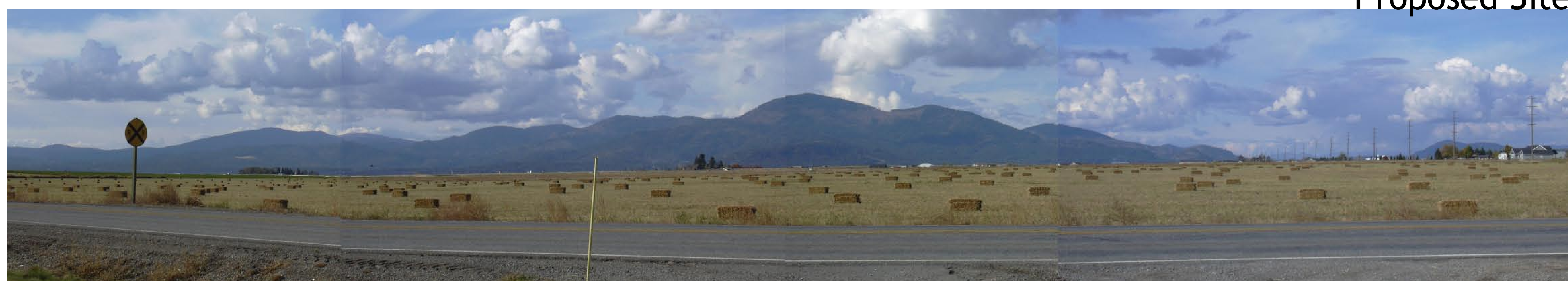


Park

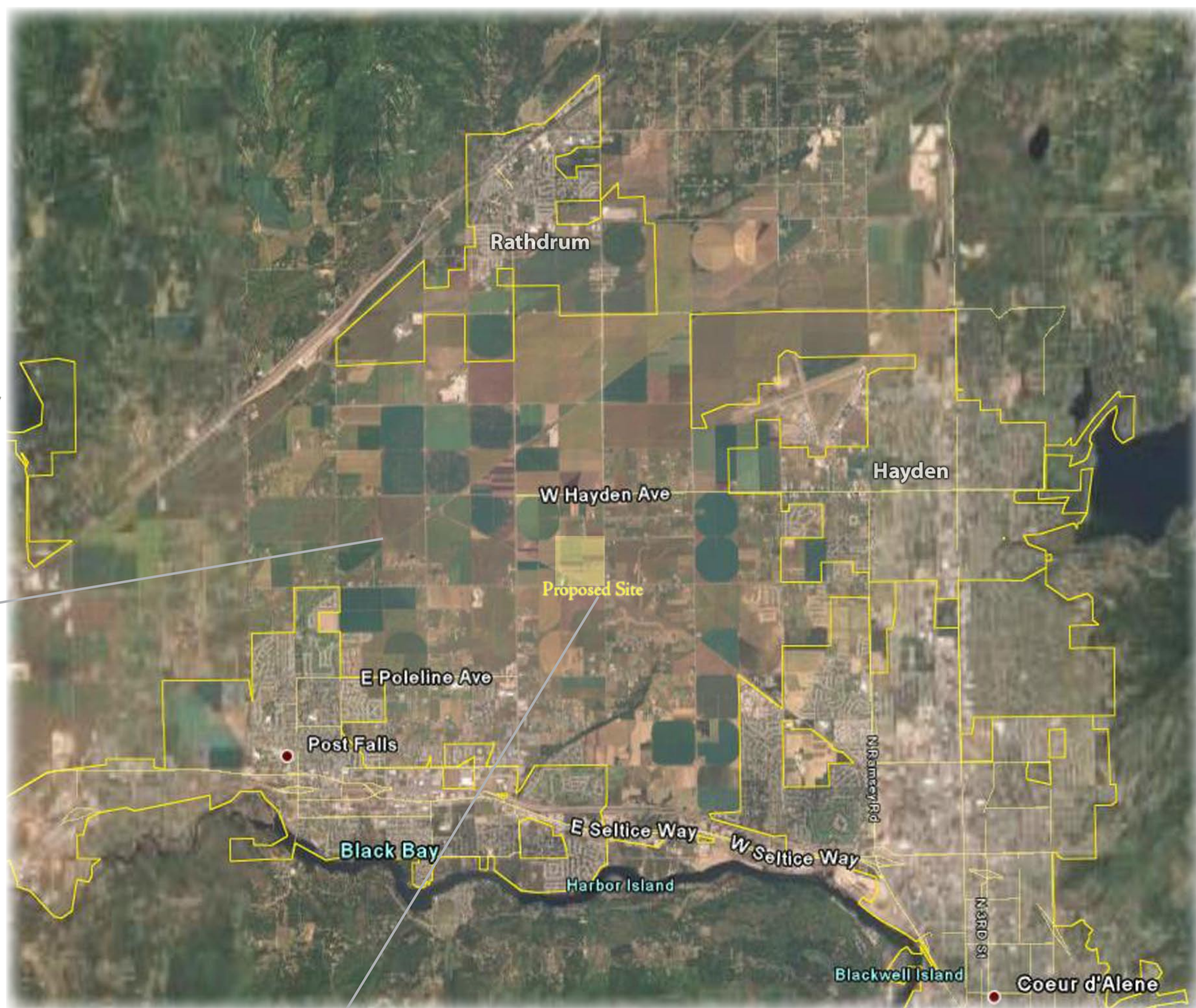
Northwest Elevation
Scale: 1/32" = 1'



Proposed Site



MOTNS EDGE



MOTIVE

Not only is a new community center essential for the residents of Kootenai County, but since the site was chosen on the open prairie, there is potential for the expansion of future projects and the ability to develop and provide a fresh, new urban environment. With new housing developing nearby, a new urban setting can present a unique, innovative design for the never-developed area. The new setting would provide convenience for those living nearby, without taking away from the excitement and animation of the surrounding four cities.

The expansive size of the facility may seem a bit overwhelming at first glance, but the fact that each space has direct connections to other spaces gives it a more comfortable feeling.

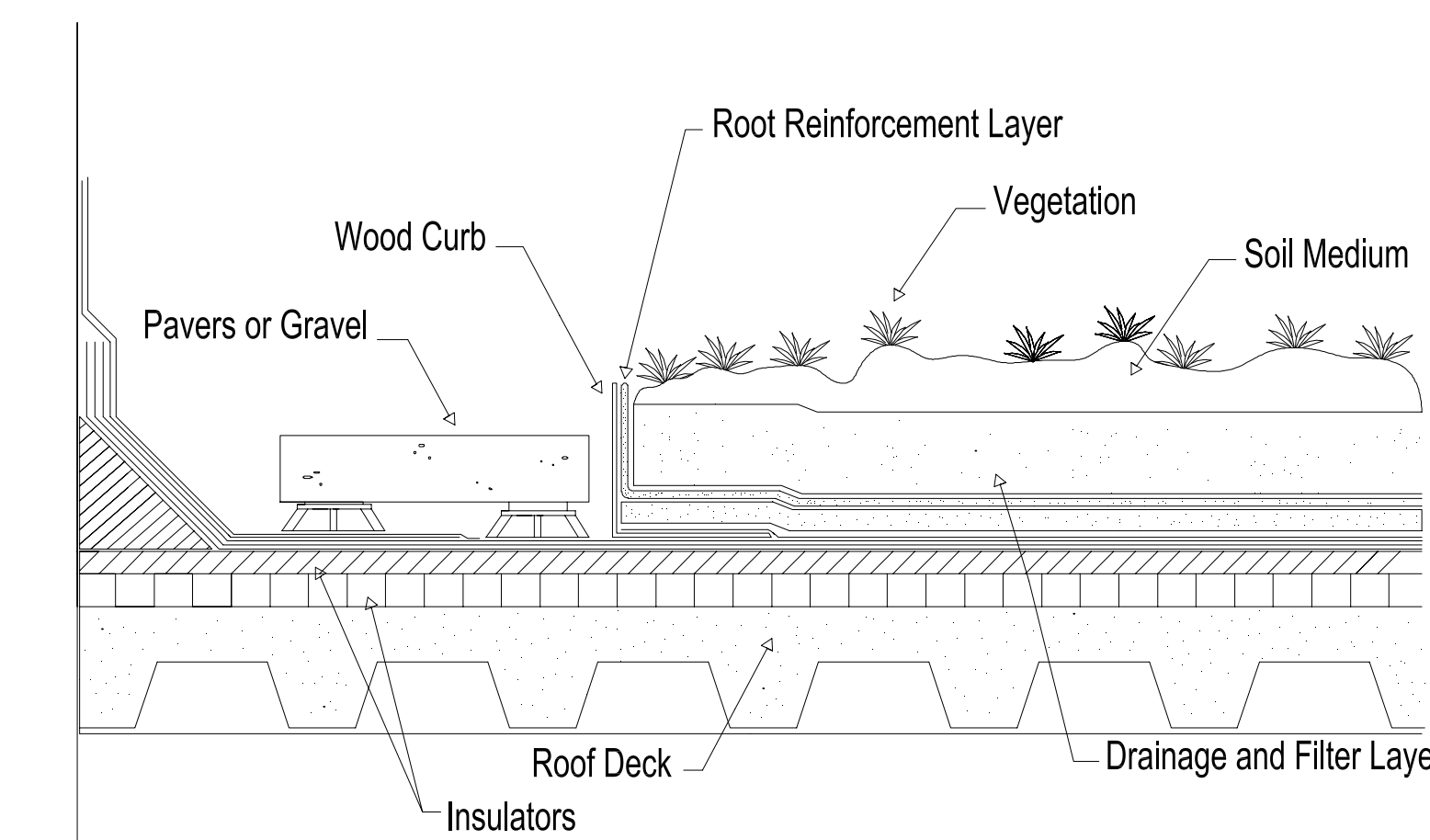
An 86 ft rock climbing atrium protrudes vertically to relate to the surrounding mountains. The rock climbing walls that interlock to the atrium space extend the height of the three floors.

An indoor/outdoor cafe allows for optimal use during all four seasons. A close proximity to the bike path provides an ease of accessibility for pedestrian traffic and bikers. The indoor cafe steps down sixteen inches below grade to offer a more comfortable setting and multiple partitions are used to separate the cafe from the other spaces, while still allowing for visual connectivity. Timber construction along portions of the outside seating area creates a shade/shadow composition that continually changes with the passing of the day.

The structure is supported by three-tiered, steel columns that allow for a minimal need and use of load-bearing walls. These bundled columns provide a wide range of uses for each space and allows for the option to update or redesign different spaces in the future while having a minimal effect on the overall structure of the buildings.

The linking structure that connects all three buildings is designed to create sizable lounge areas and provide transitional spaces between all three buildings on the second floor level. The multiple use of windows along the two sides of the links allows for views of the majestic landscape and visual interaction with the outside environment. The interlocking of these buildings allows for continuous circulation while providing separation among activities.

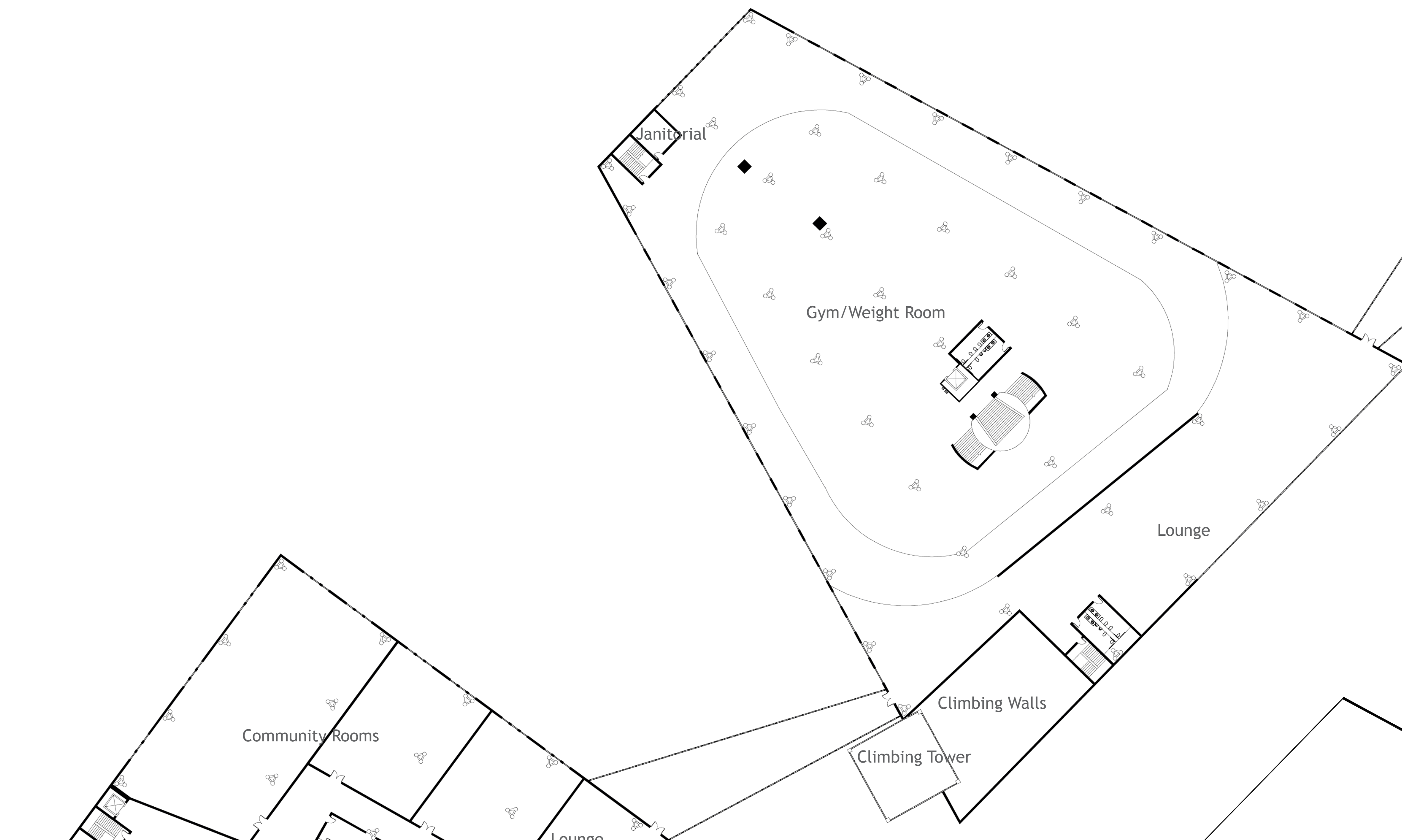
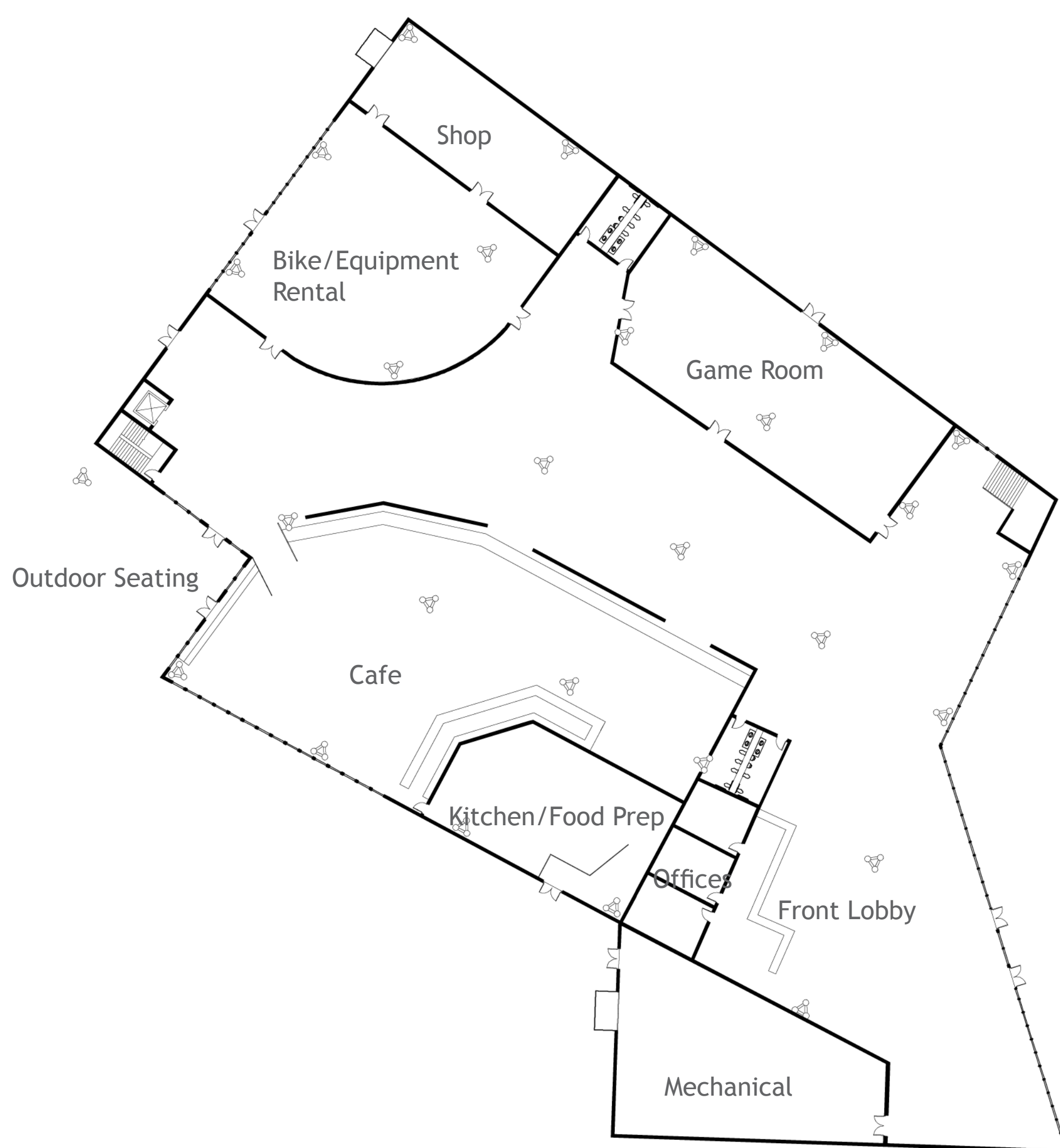
The third floor opens up to a green roof that extends the remaining area of the building. The walls continue to taper as they extend from the shared edge of the third floor to the northwest end of the building. In contrast, a 6 ft steel-framed, glass railing is constructed at the northwest edge of the building and extends towards the third floor until it becomes flush with the height of the wall. This allows for views of the entire site without detracting from the aesthetics of the tapered walls.



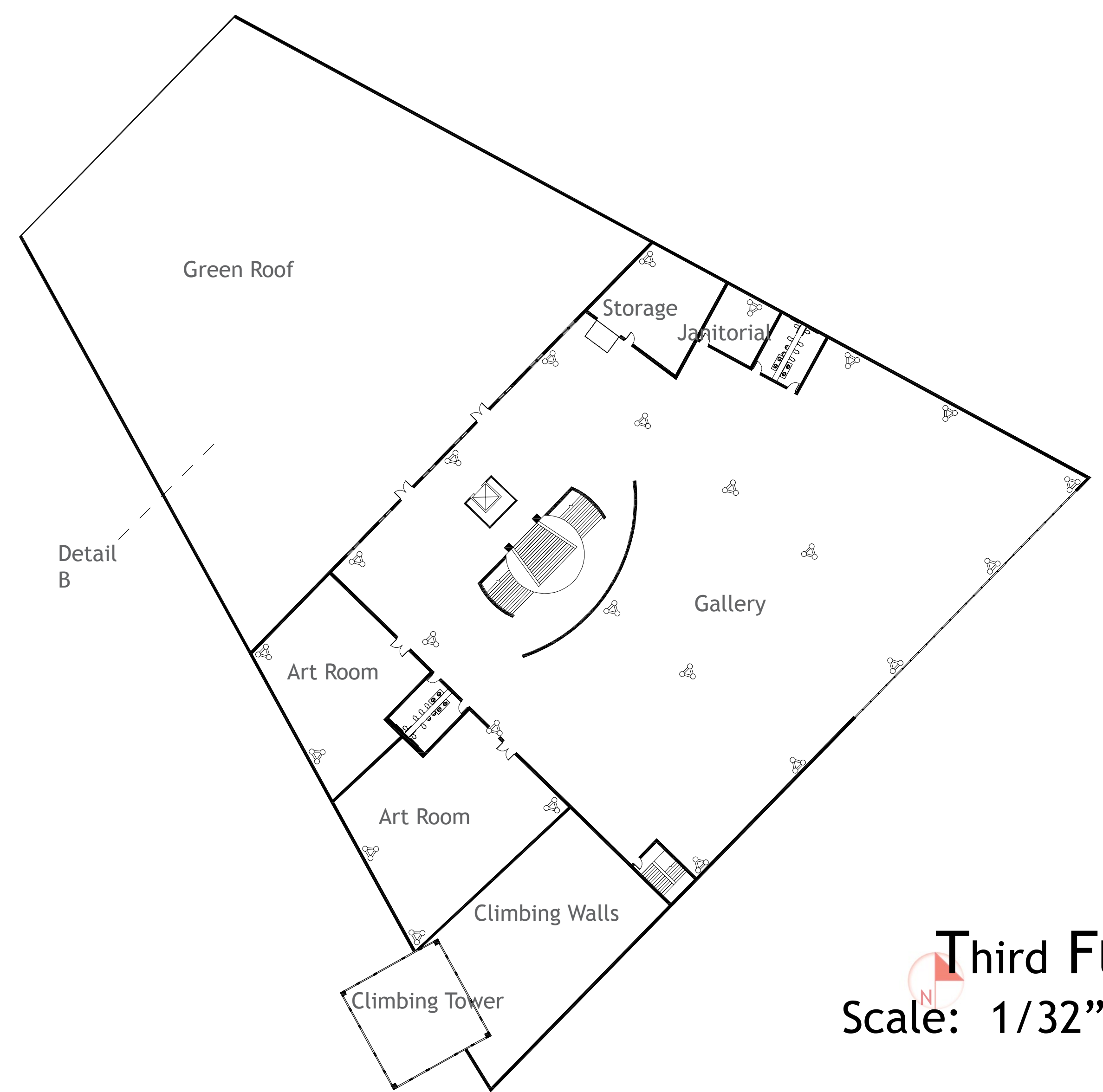
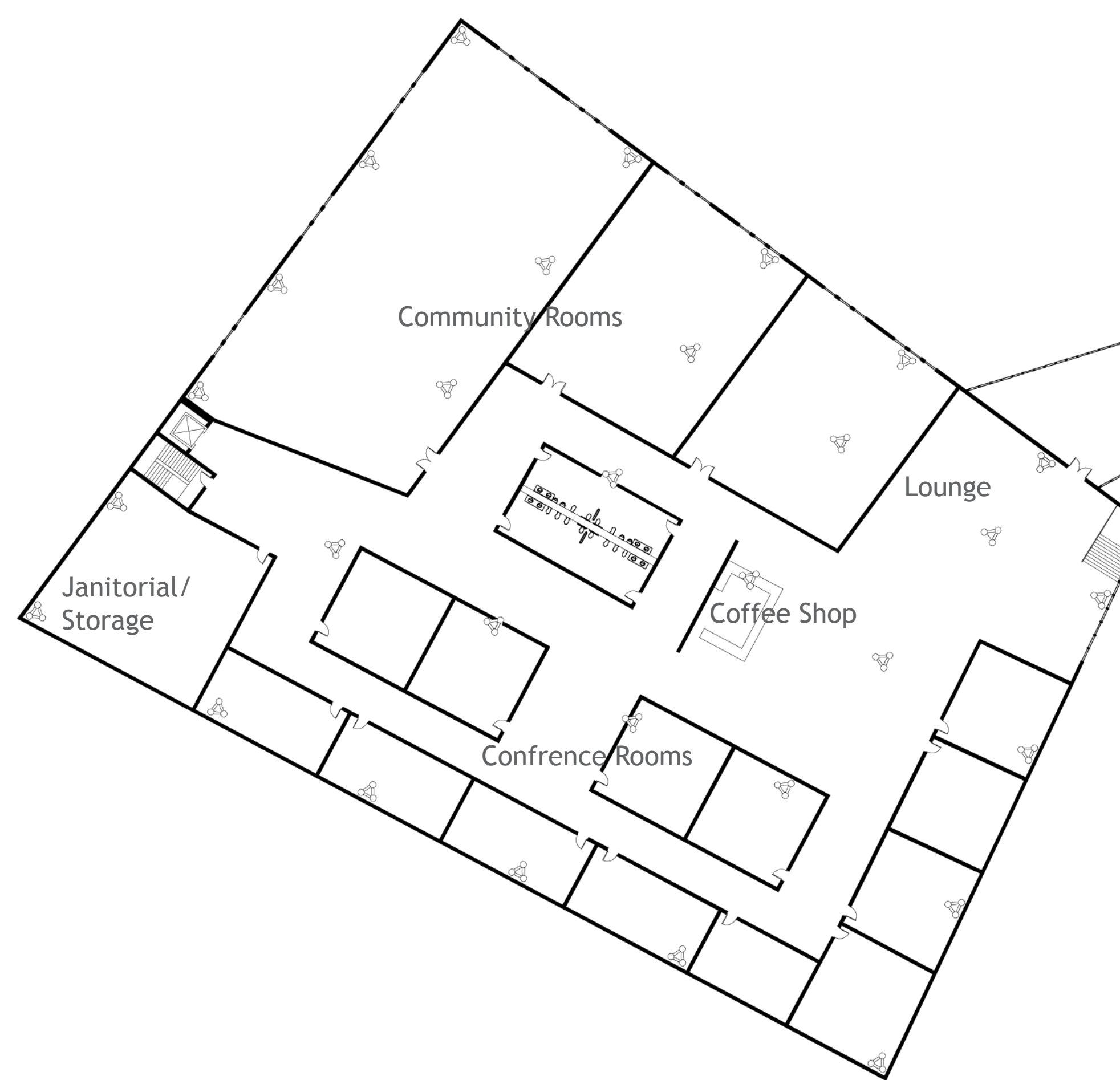
Detail B : Roof Garden
Scale: 1 1/2" = 1'



First Floors
Scale: 1/32" = 1'



Second Floors
Scale: 1/32" = 1'



Third Floors
Scale: 1/32" = 1'

Southeast Elevation
Scale: 1/32" = 1'



Existing Railroad Tracks



Northwest View



North View



South View

