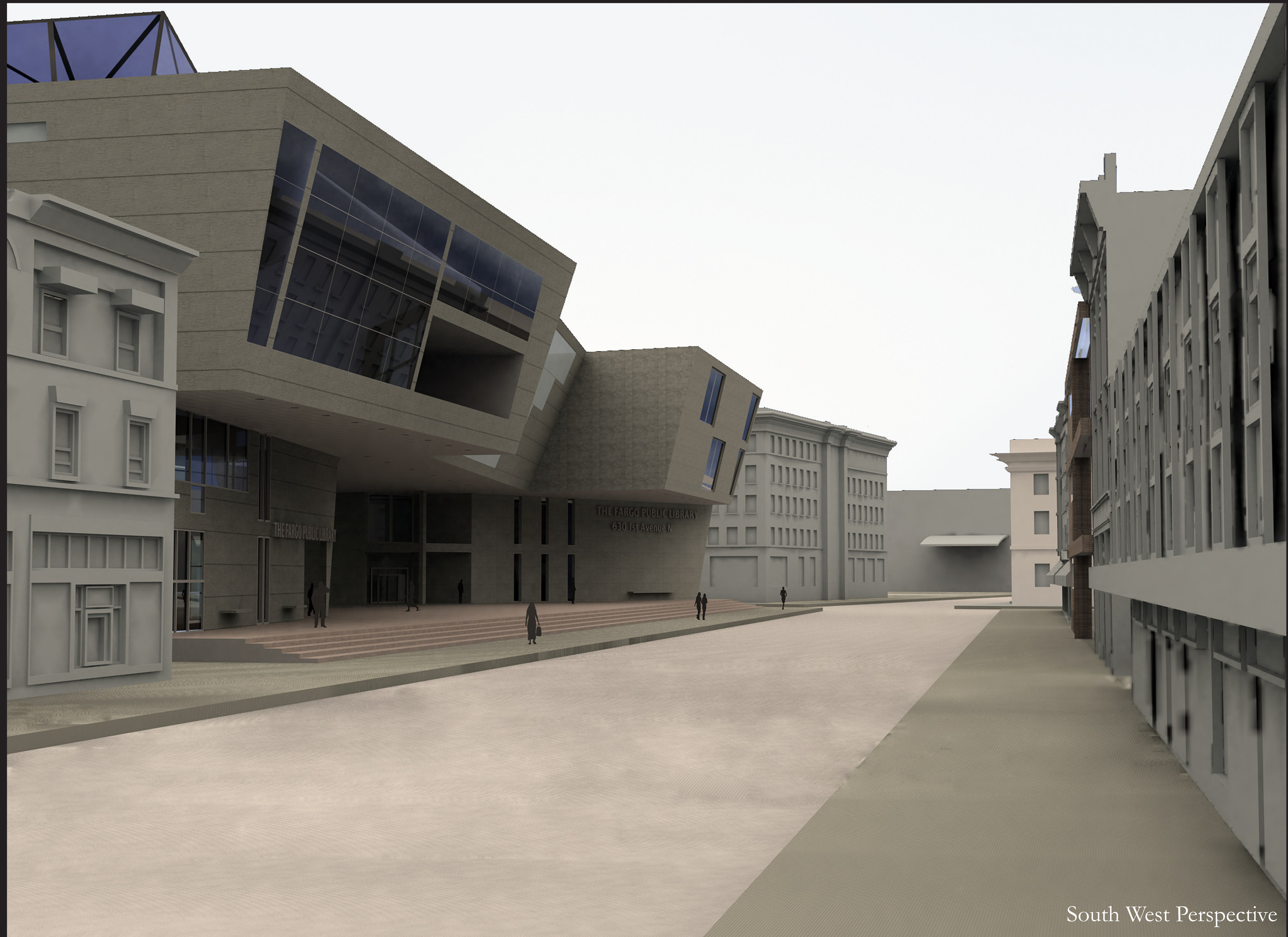


THE CENTER FOR

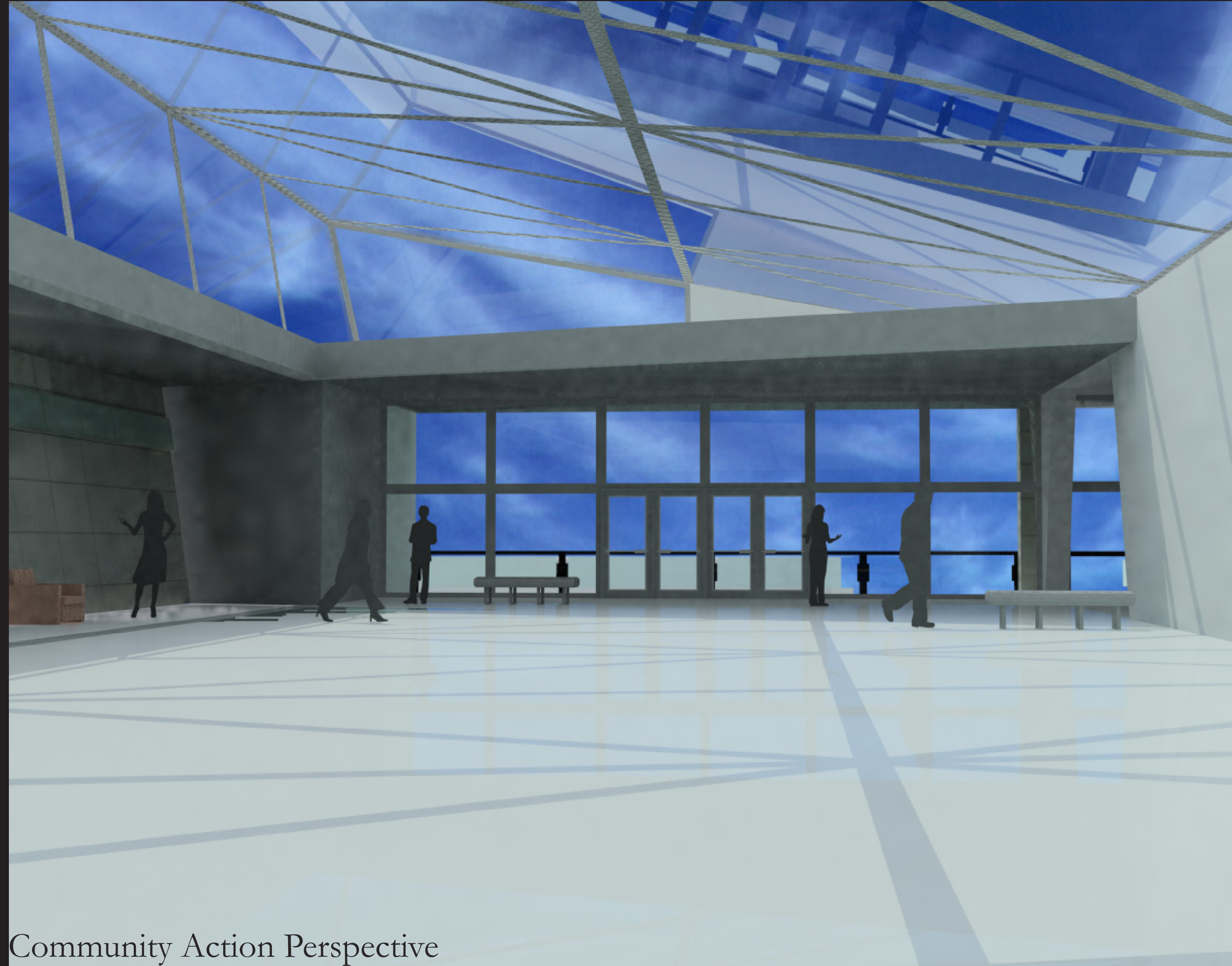
THE REBIRTH OF THE FARGO PUBLIC LIBRARY

Knowledge is built upon the shoulders of the men and women who have come before us. Knowledge is something gained through interaction. In an urban environment this interaction takes on many different roles. The driving forces for this design was the integration of the many different forms of inter activity. The intent in this design was to engage all forms of passersby. Whether it be motorists, pedestrians, or members of the downtown community, the intent of the design was allow you the interactions that we all at times need. The building will become the new Fargo Public Library creating a central point for downtown Fargo. Creating a modern piece in a historic downtown area was a challenge, as was maintaining the blocks figure ground. The Center for Collective Knowledge will be a building that facilitates all types of knowledge. Human interaction, spoken word, written word, as well as audio and visual forms. It is a building that also you to experience as well as learn in your environment.

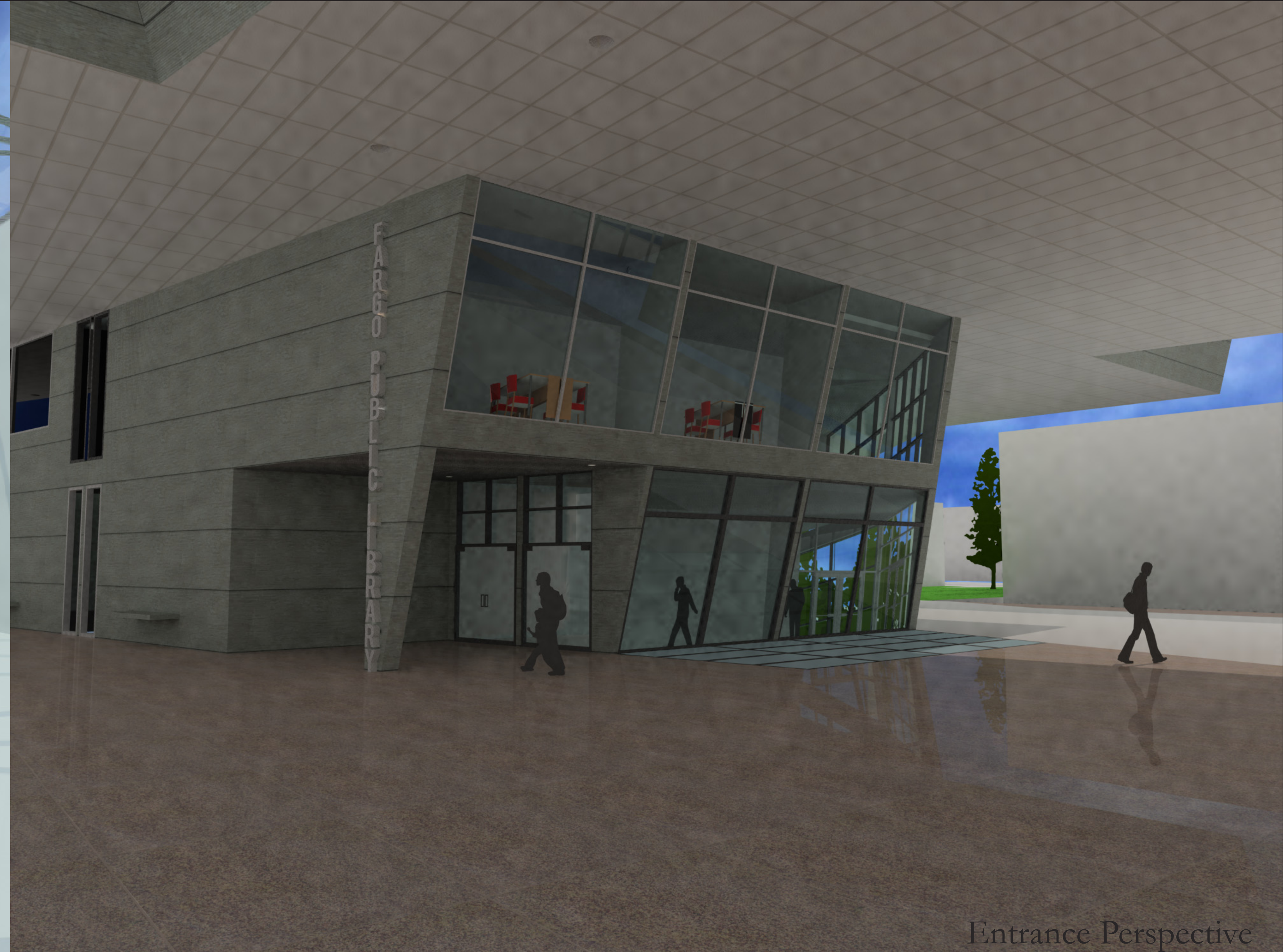


COLLECTIVE KNOWLEDGE

AND THE REVITALIZATION OF DOWNTOWN FARGO



Community Action Perspective



Entrance Perspective

The image on the left is of the Community Action Space. In this space different aspects of community functions can be held as well as library functions as they arise. It is an open space filled with natural light which makes it quite and calming and well as engaging at the same time. The image on the right is of the entrance to the public wing of the building. This public wing houses the teen and children centers, the class rooms, public computer clusters and the community action space. The site its self drove many of the components for this building.

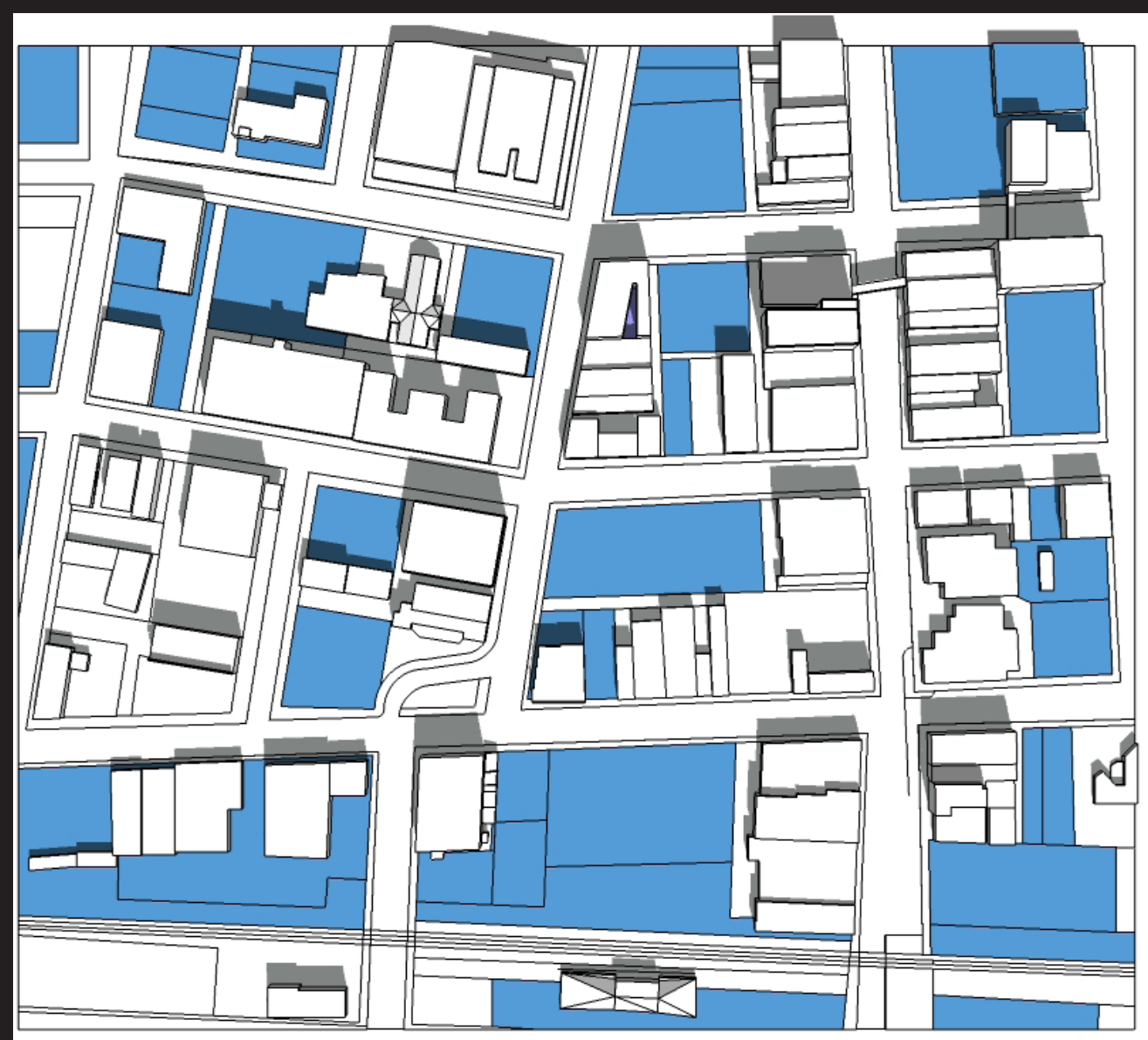
The site lays in Fargo, North Dakota, on the corners of 1st Ave N and Roberts street. It is currently occupied by The Cinema Grill, an abandoned building. When analyzing the site and its surroundings there were a couple of strong points that presented them selves. One, the downtown area, despite its best efforts thus far, is still a broken landscape filled with

parking lots, breaking the continuity of the block. Secondly, from almost every corner on which the abandoned building stood, a person was able to look “through” a block that would have normally blocked to view. The small middle top image shows the views that would be present if the Cinema Grill was not there. The small top middle figure represents the parking lots that litter downtown Fargo in blue. The second image is the actual site, sitting in its surroundings with the third small image showing the views that are possible if the abandoned building was removed. These issues lead me to the solution you see. The large image shows the library being lifted off of its site, allowing for the views to be opened up. By doing this an open parking lot presented its self to be turned into the only green space located in downtown Fargo. Across the street a mixed use building filled another void on the block, and the third building behind that the dark gray one is a parking lot with underground access to the library. This building will act as a focal point for downtown as well as people who live far from downtown. The library will become important in keeping the community informed of what the community is doing.

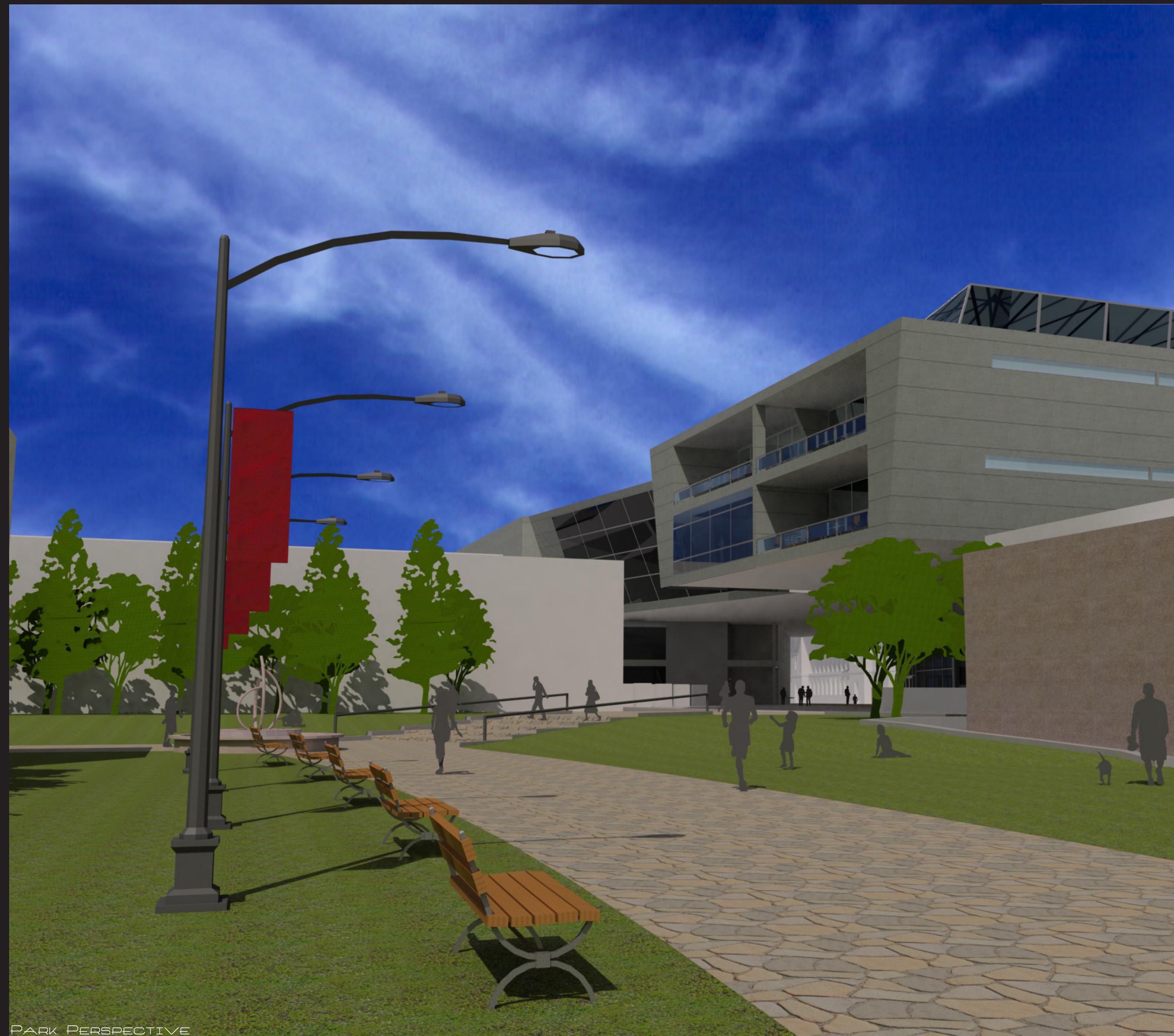




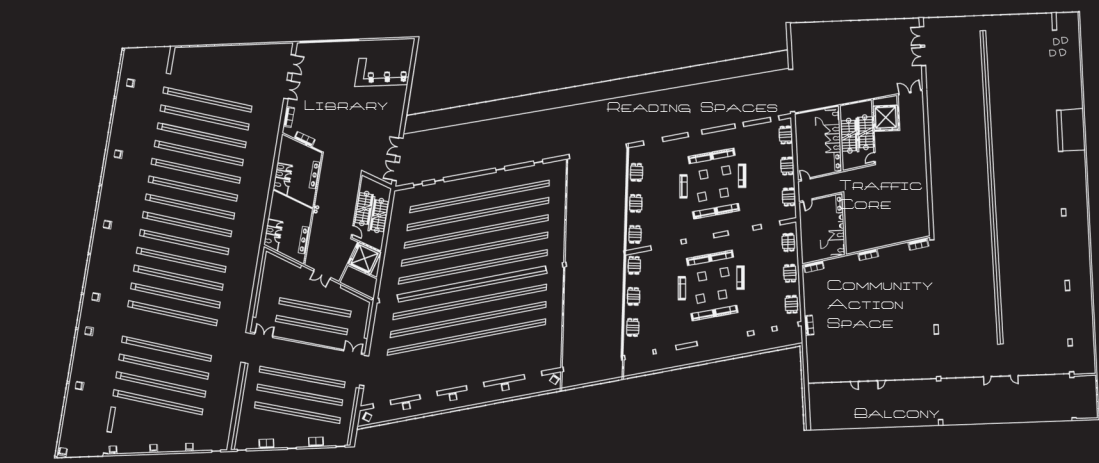
SITE VIEWS



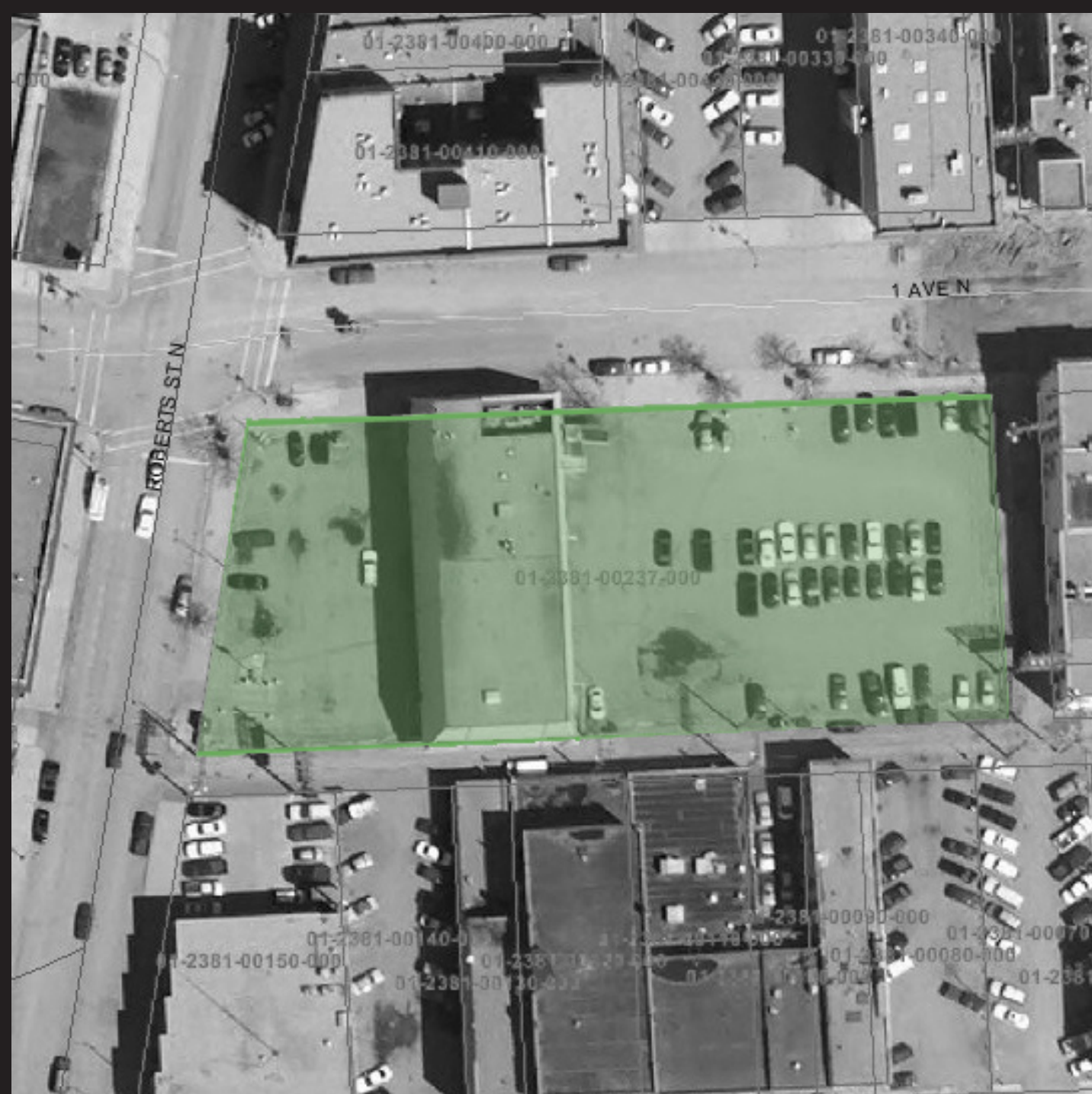
PARKING VOIDS STUDY



PARK PERSPECTIVE



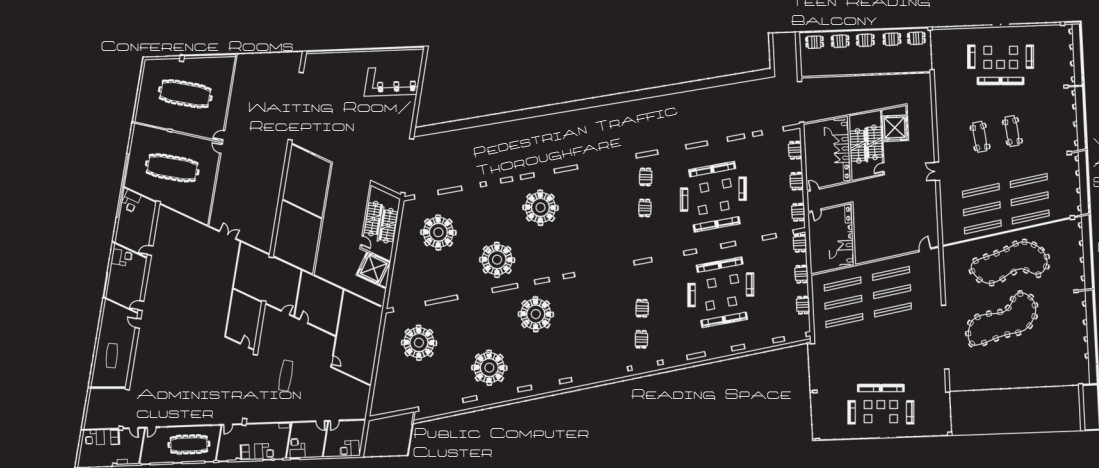
FOURTH LEVEL
SCALE: 1" = 32'



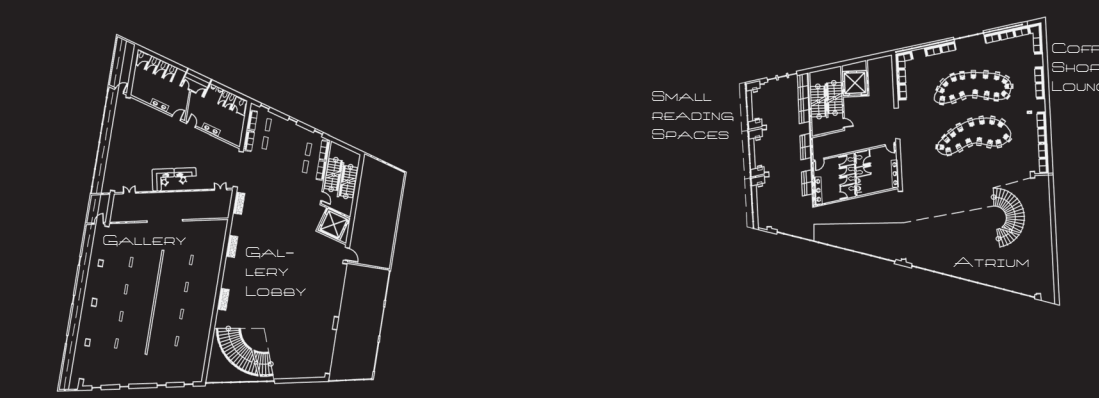
SITE



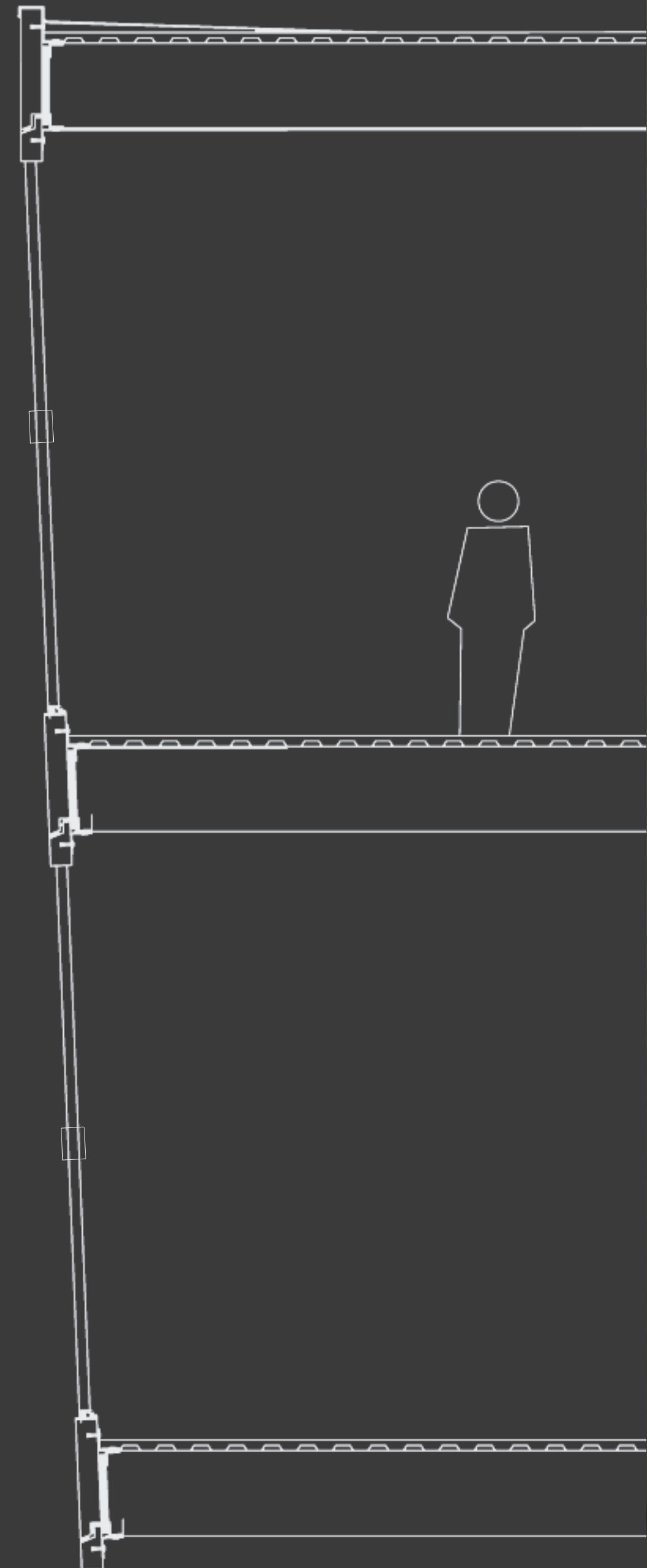
NORTH EAST PERSPECTIVE



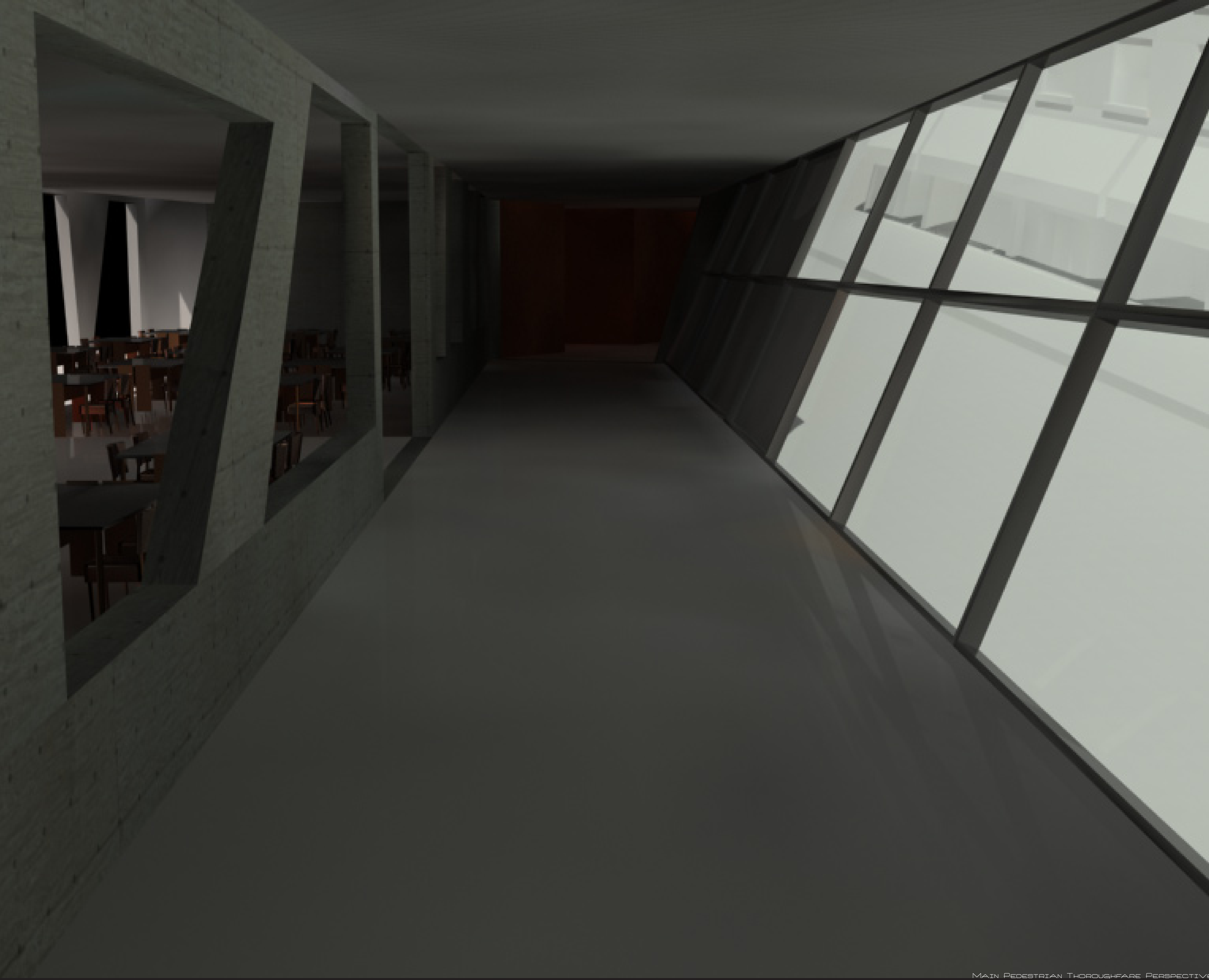
THIRD LEVEL
SCALE: 1" = 32'



SECOND LEVEL
SCALE: 1" = 32'



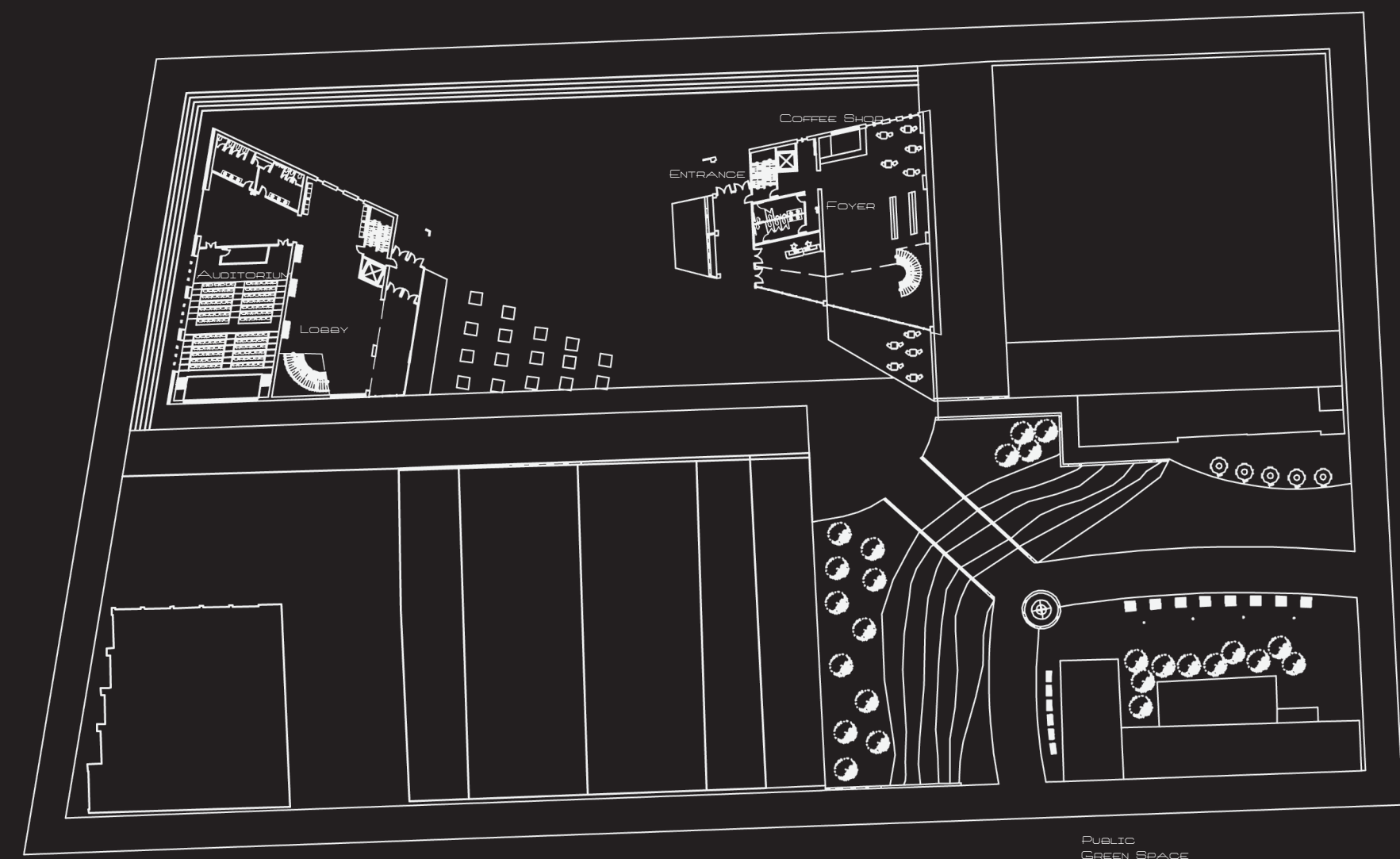
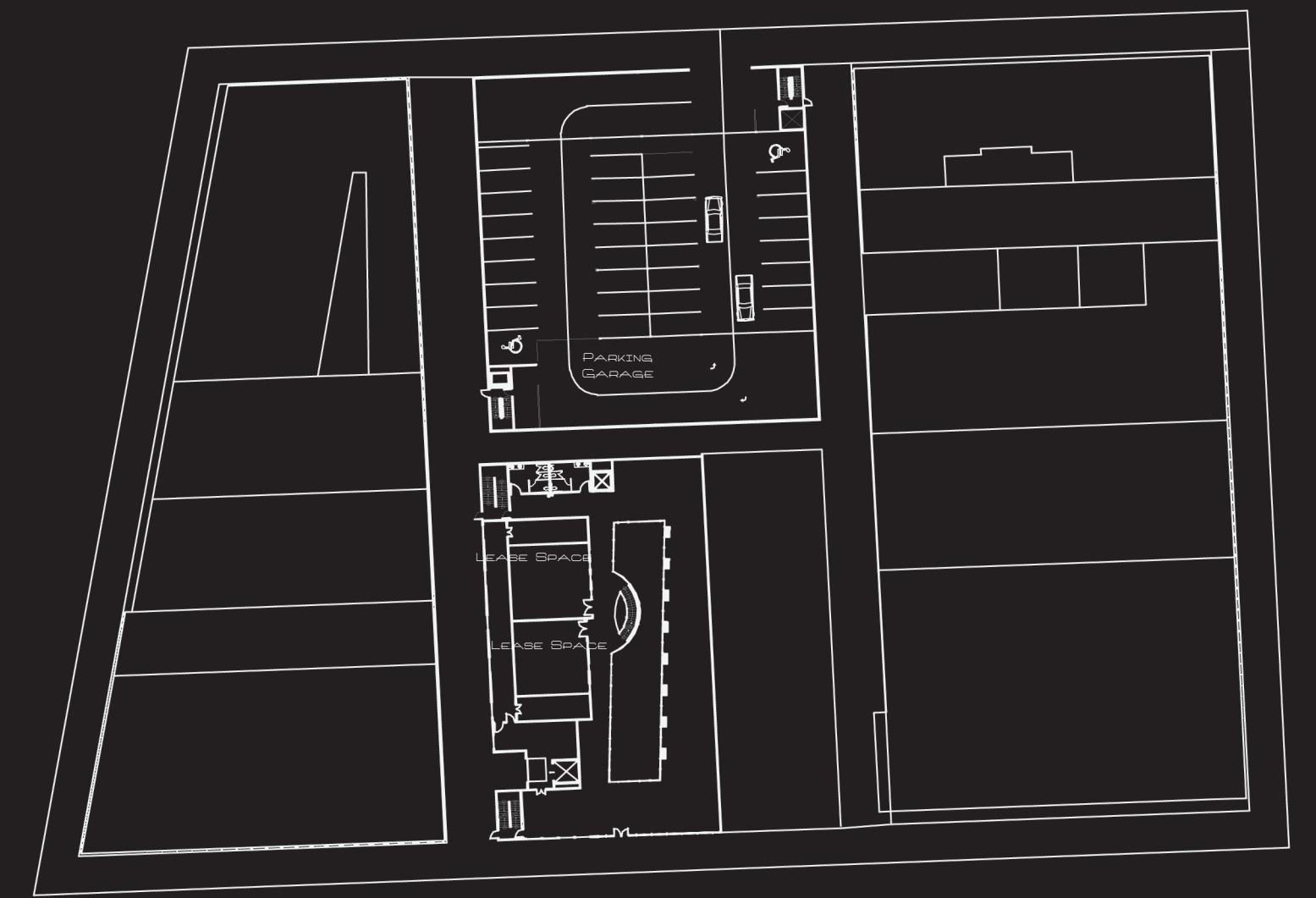
DETAIL OF WALL IN OPPOSITE PICTURE
WALL DETAIL IS 3/8" = 1'



FARGO PUBLIC LIBRARY

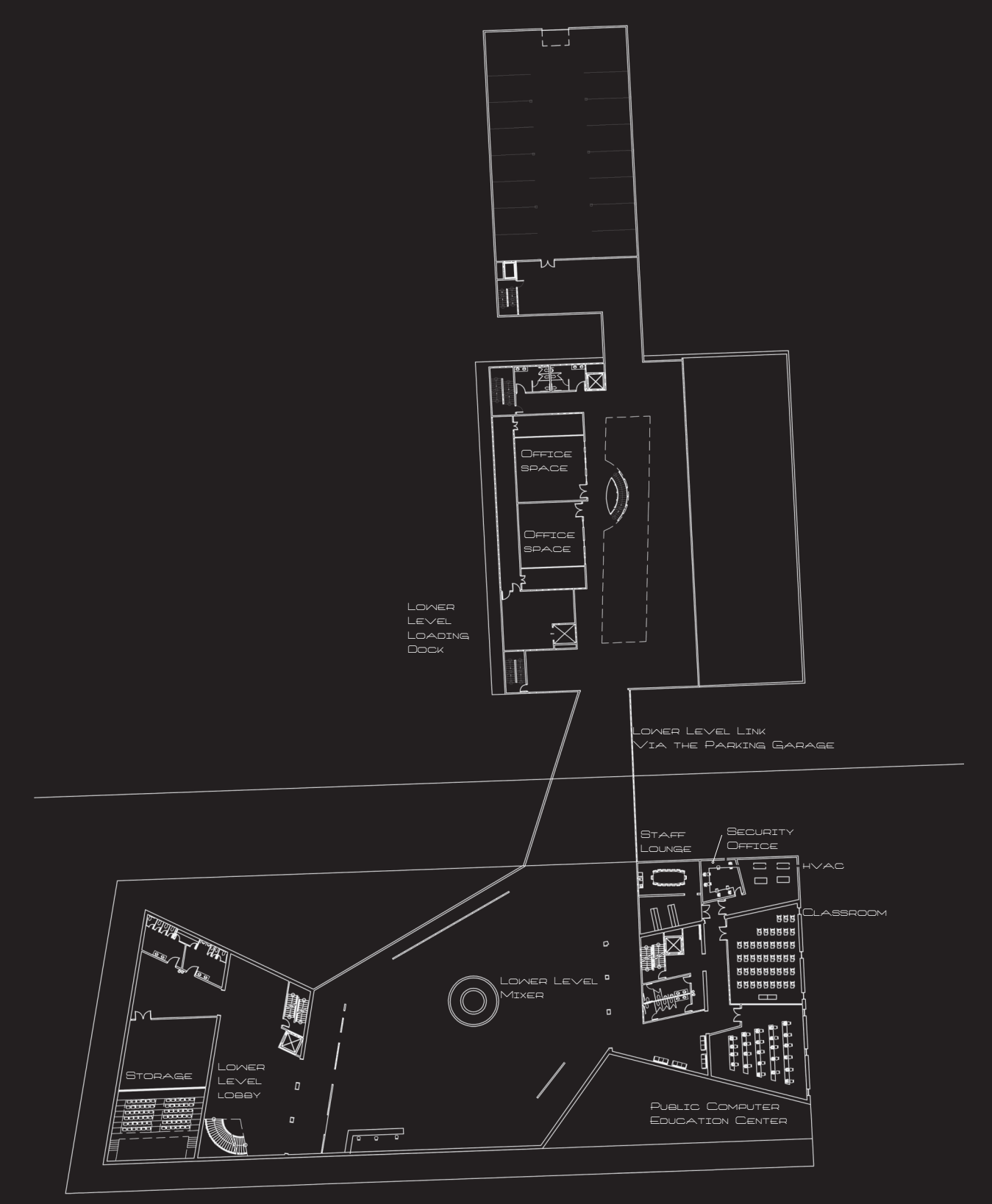
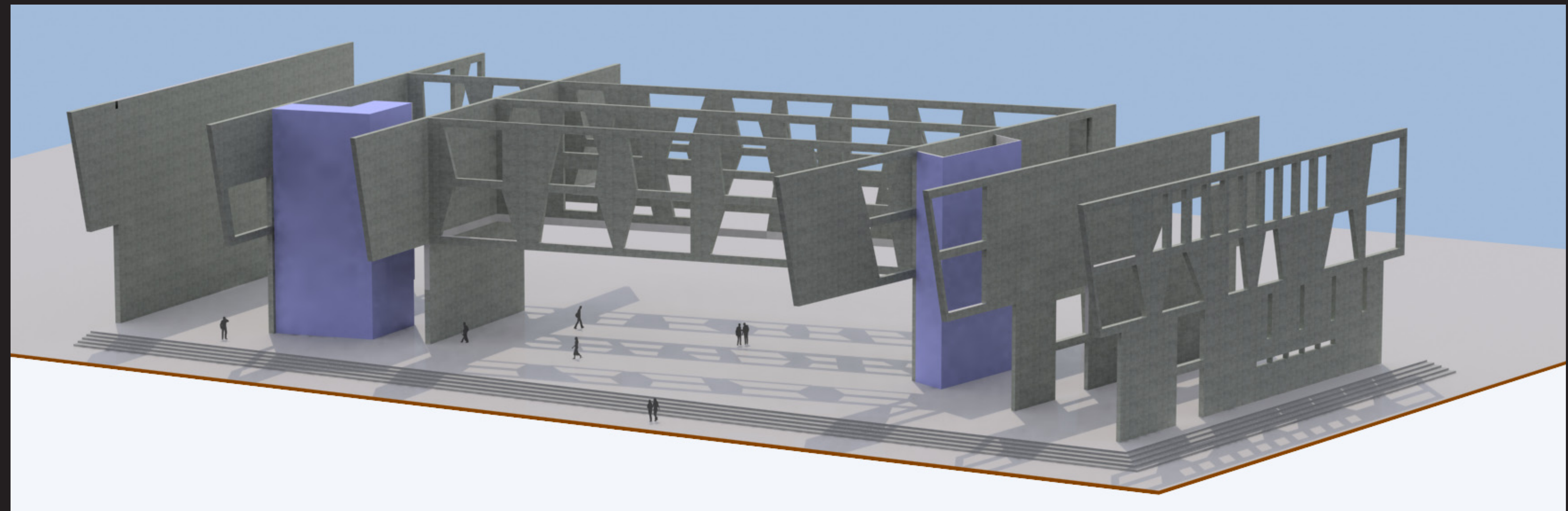


EAST TO WEST SECTION PERSPECTIVE



MAIN LEVEL
SCALE: 1" = 31'

STRUCTURAL DIAGRAMS
CONCRETE VIENDEDEL TRUSSES
BLUE TOWERS REPRESENT VERTICAL TRANSPORTATION CORES



LOWER LEVEL
SCALE: 1" = 32'