



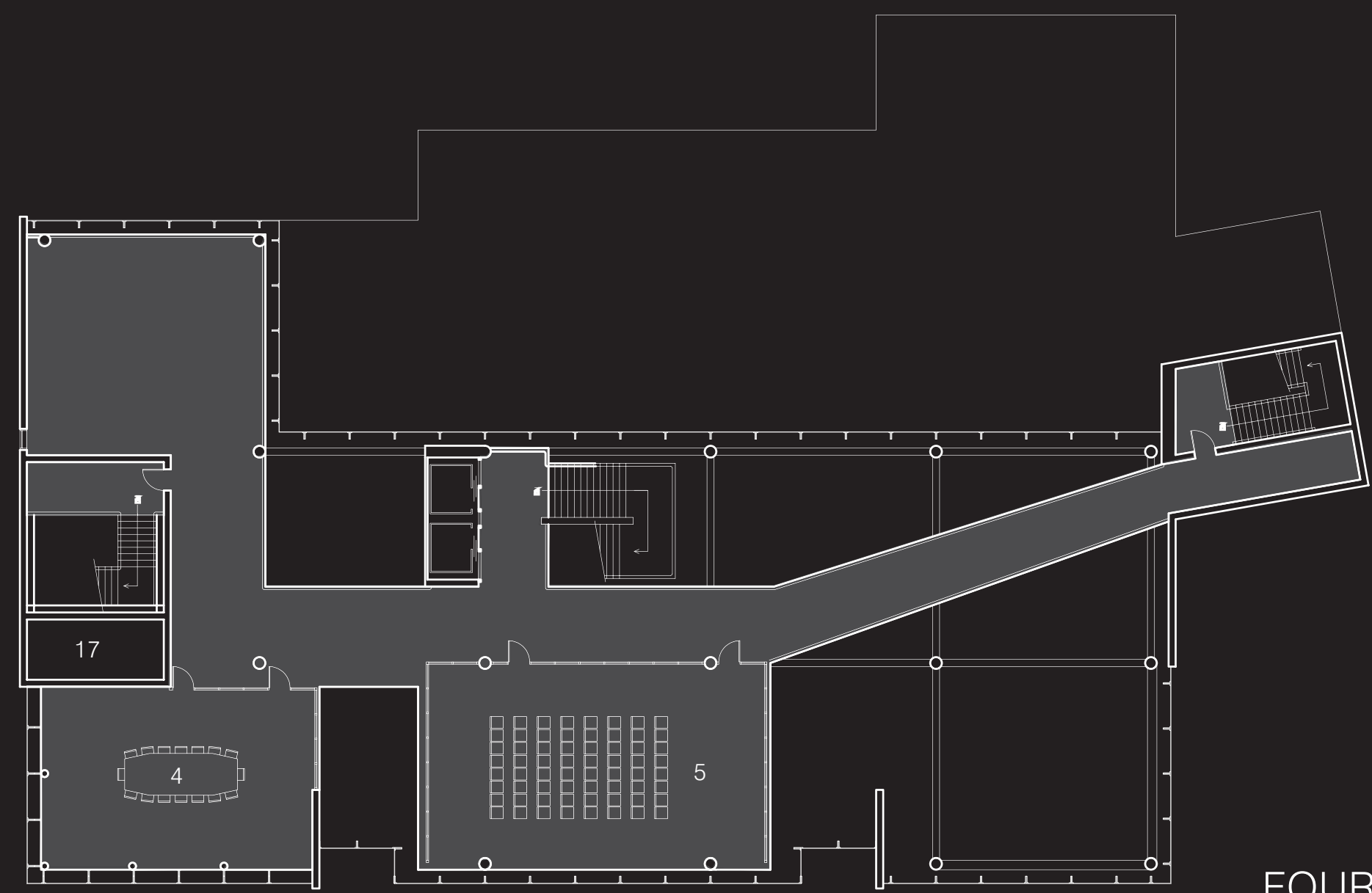
WALKER COMMUNITY LIBRARY

THROUGH INTERACTION COMES THE SPREAD OF KNOWLEDGE

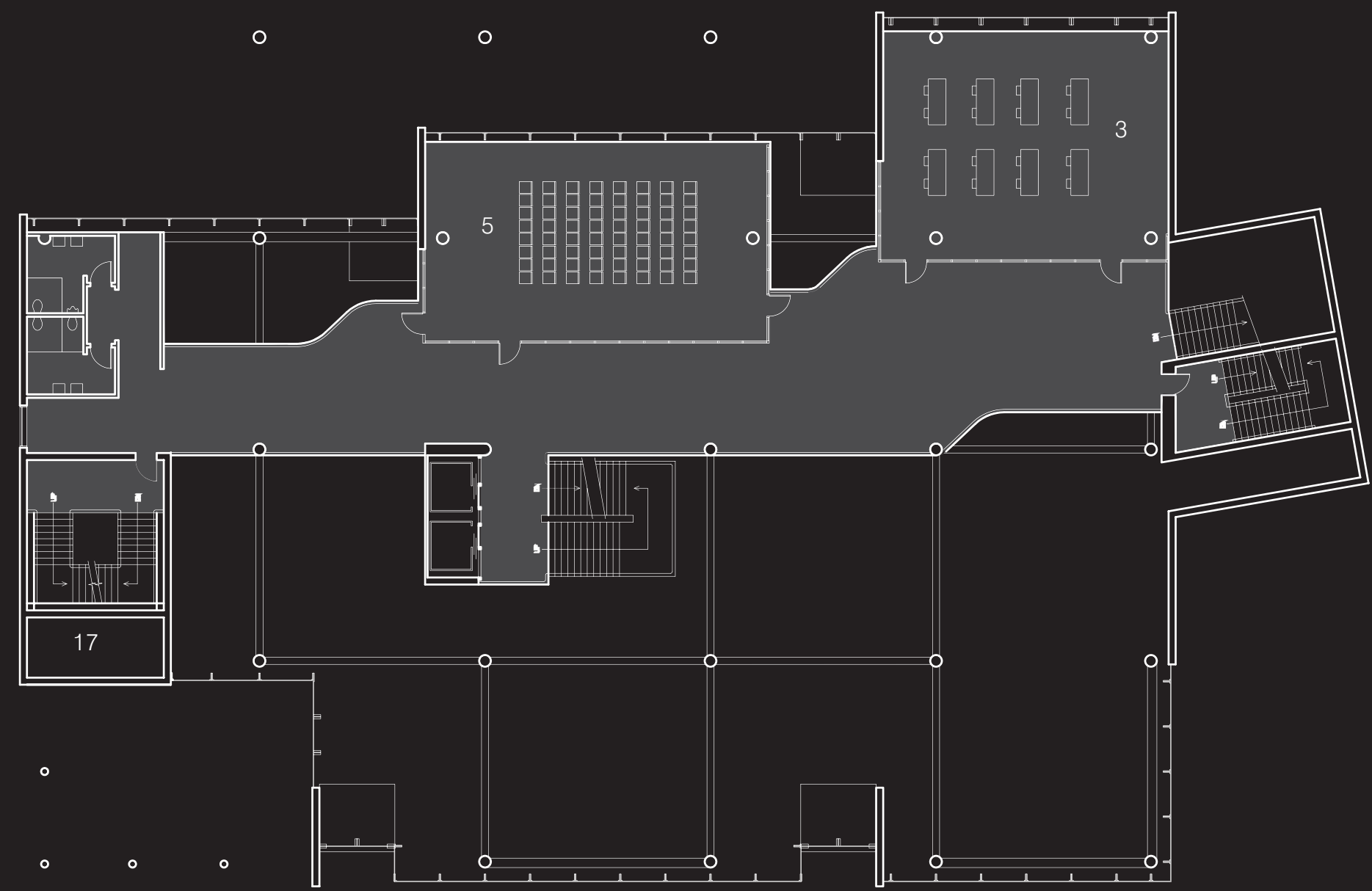
The library today is a destination, a resource used to transfer knowledge to the general public. As we once progressed from oral exchange of ideas to written information, we are now changing from written information to digital information. Information that can be accessed whenever or wherever an individual needs it. So if the physical presence of books is no longer needed, what function does a storage facility, a library have? Essentially the functional space of a library is no longer needed. But the library, as a public destination is still needed.

In a sense we are coming full circle. The idea of a forum, a destination, was once the ideal. A place we could go for answers, discussion, socializing, and ultimately the spread of knowledge and ideas. And as we evolved we separated some of these functions into libraries, markets, and government, but the destinations were still there. But as we lose the common market, become further removed from the internal workings of government, and continually fill the urban fabric, we lose the space to congregate and interact. And that was and still is the function of the library. The library wasn't and still isn't just a place to get a book. It was and still is a public amenity, a destination, a chance for discussion, and that is something we will always need.

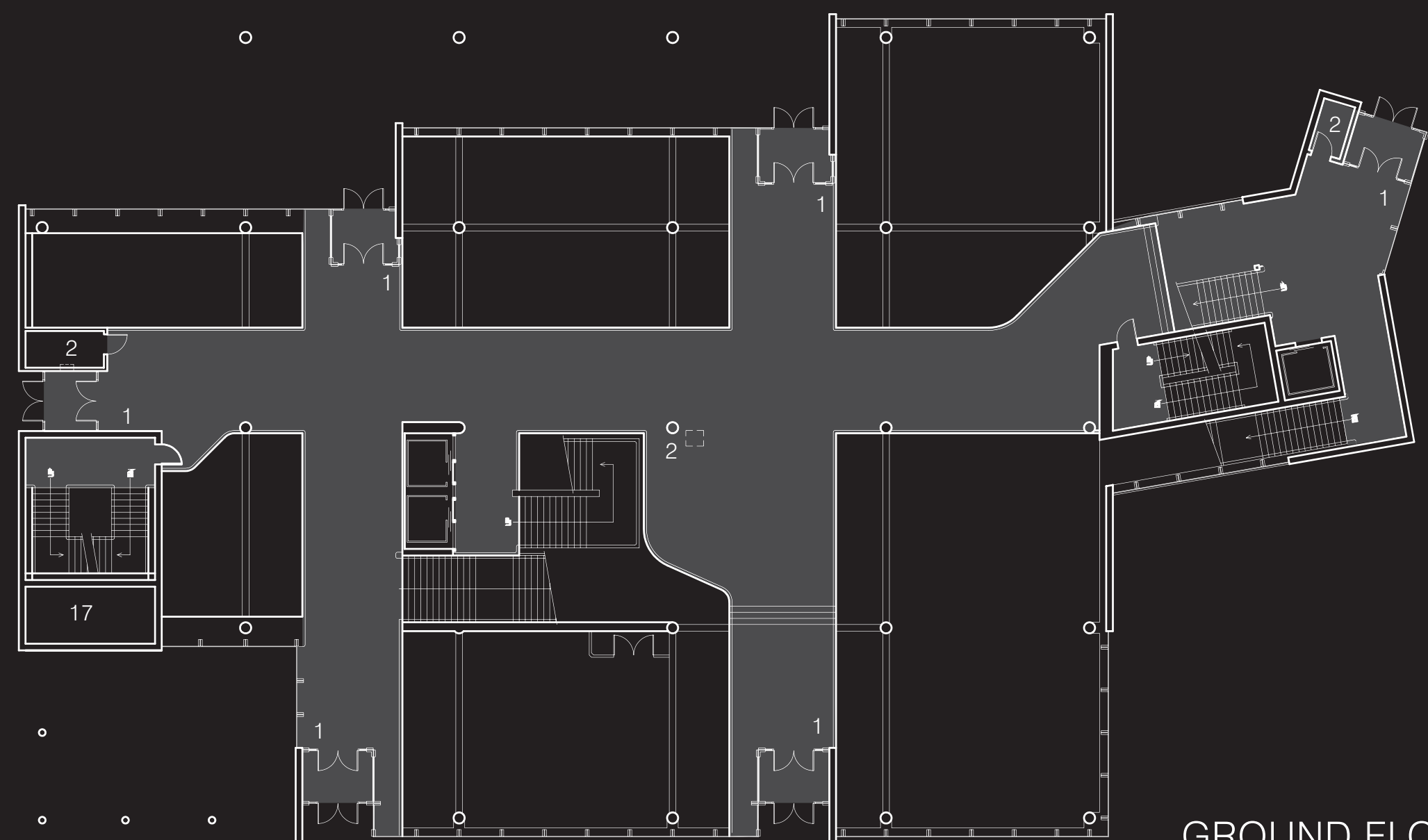
Through interaction comes discussion, and from discussion comes the spread of knowledge, and from the spread of knowledge comes a higher quality of life.



FOURTH FLOOR PLAN
scale: 1:20

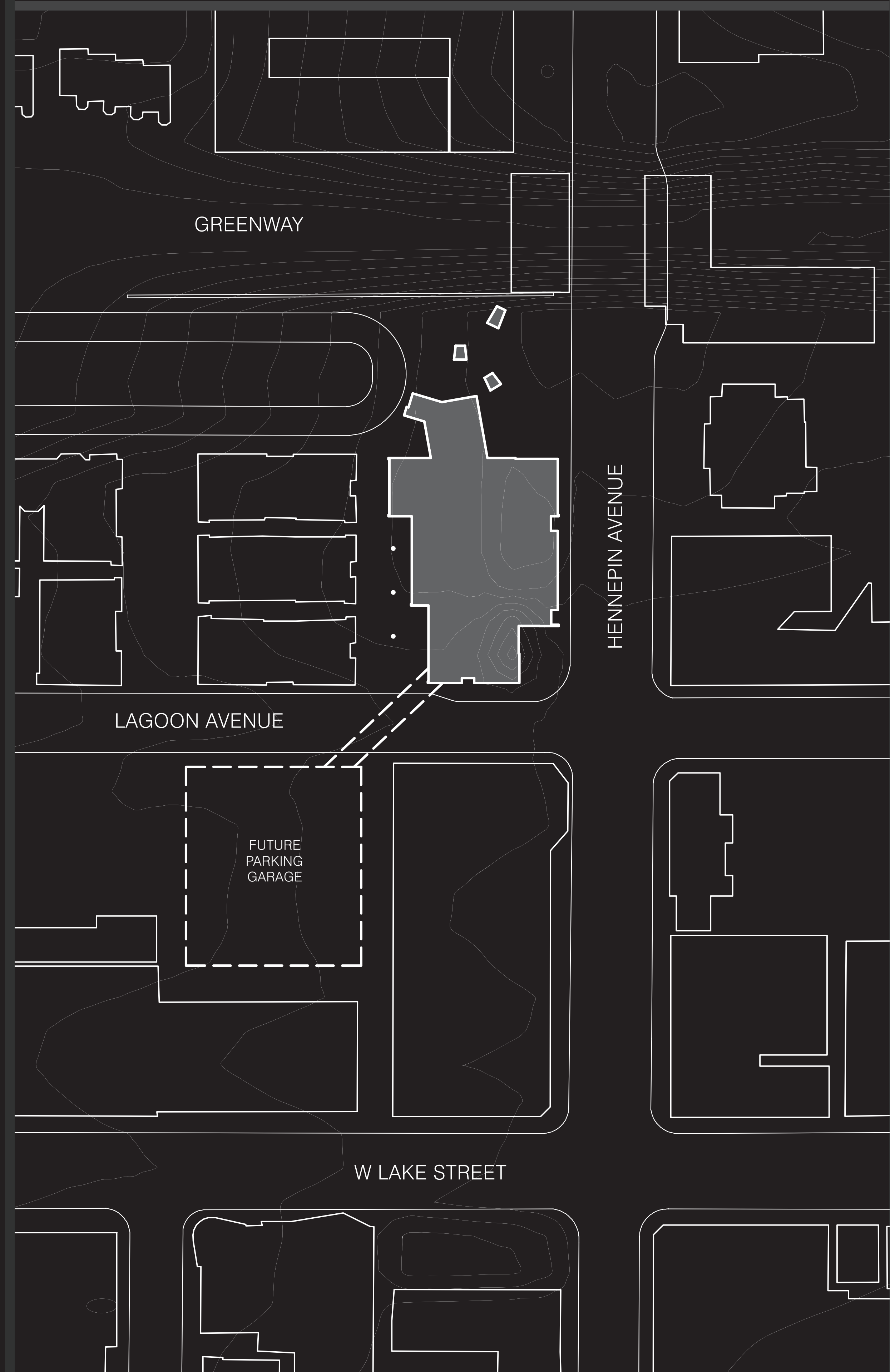


THIRD FLOOR PLAN
scale: 1:20



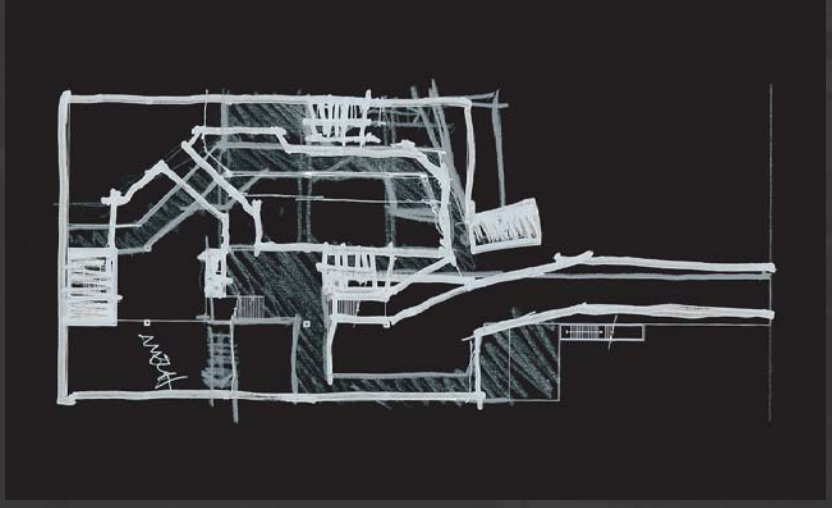
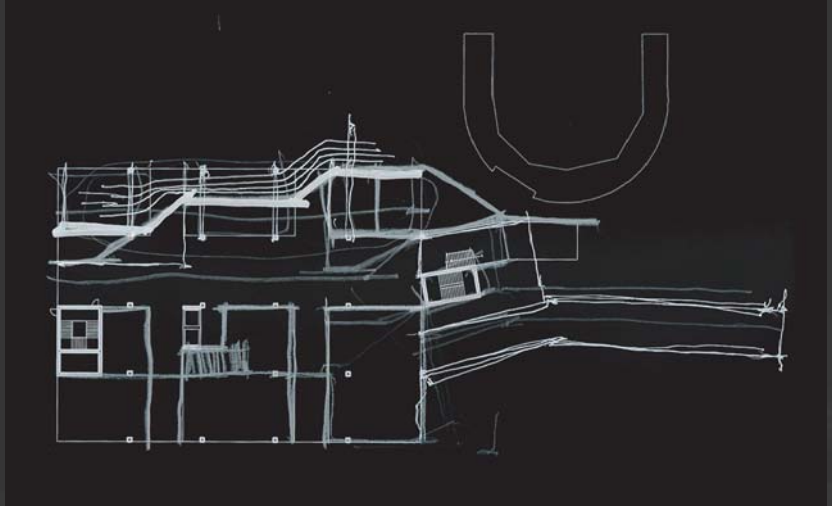
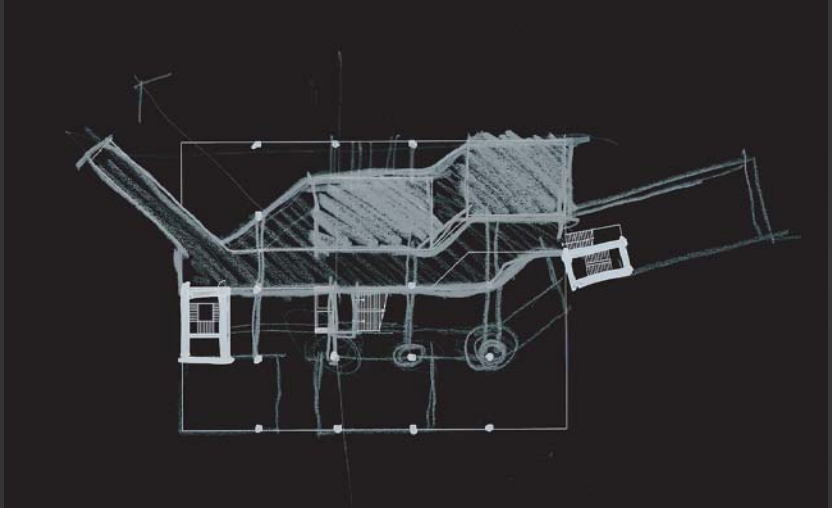
GROUND FLOOR PLAN
scale: 1:20

- 1 ENTRY
- 2 BOOK RETURN
- 3 CLASSROOM
- 4 MEETING ROOM
- 5 LECTURE HALL
- 6 ADULT STACKS
- 7 CHILDRENS STACKS
- 8 CHECKOUT/ HELP DESK
- 9 COMPUTER LAB
- 10 READING
- 11 CAFE
- 12 LINK TO BIKE PATH
- 13 WORK SPACE
- 14 BREAKROOM
- 15 OFFICE
- 16 MECHANICAL
- 17 MECHANICAL CHASE



The Walker Community Library is located at the north end of the Uptown Mall, and one of the first sites visible when approaching the central business district from the north. Across Hennepin Ave. to the east is the old Walker Library, built in 1911 and abandoned for the new site in 1981. Filling out the block to the east is the pub and peanut bar Williams, and the coffee and desert shop Zeno. Across the street to the south is the Uptown Theater, which has one of the symbolic images of the area in its sign rising from the front signifying the word 'Uptown.' The site is then bordered to the west by a three-story brick apartment building, and to the north by a greenway that extends back into the residential neighborhood. The other major structure of importance to the site is the Metro bus stop that is located just to the north of the site on the other side of the greenway.

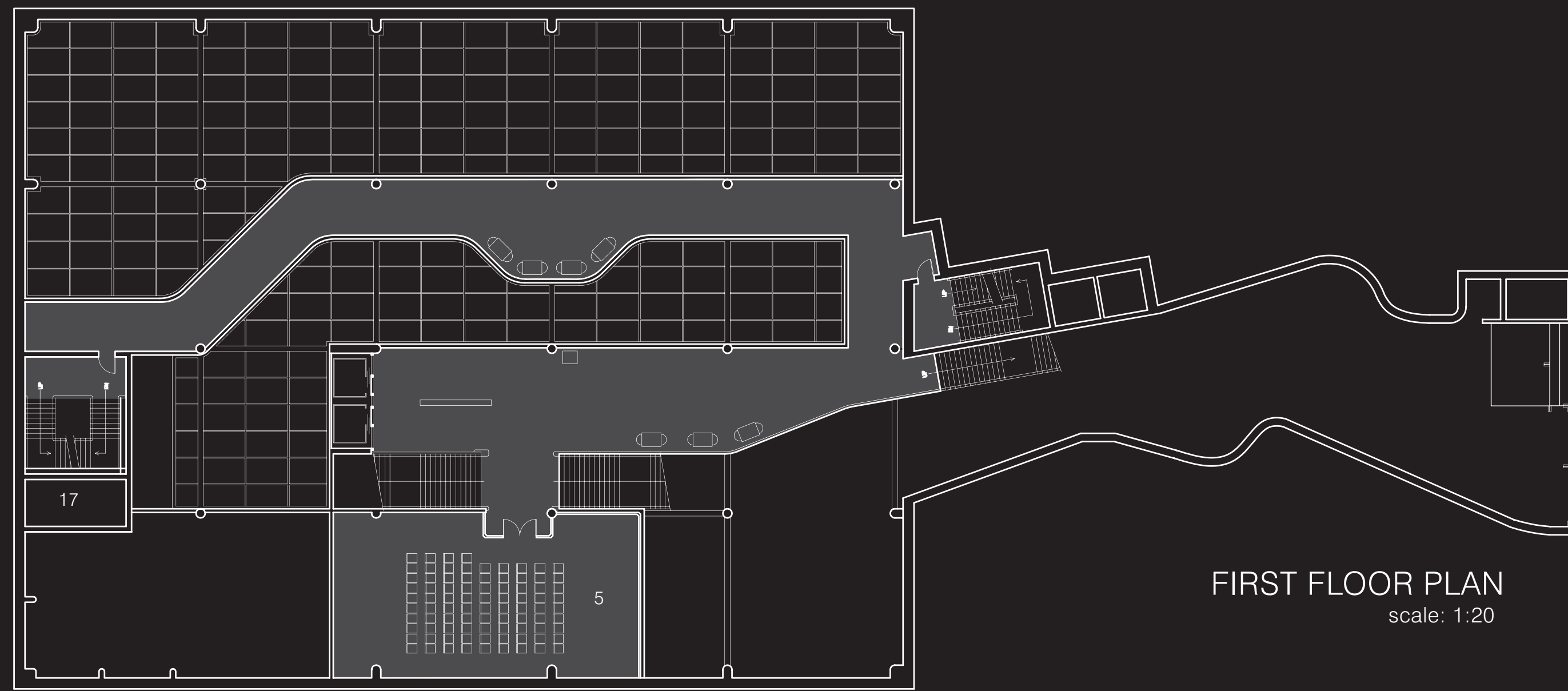




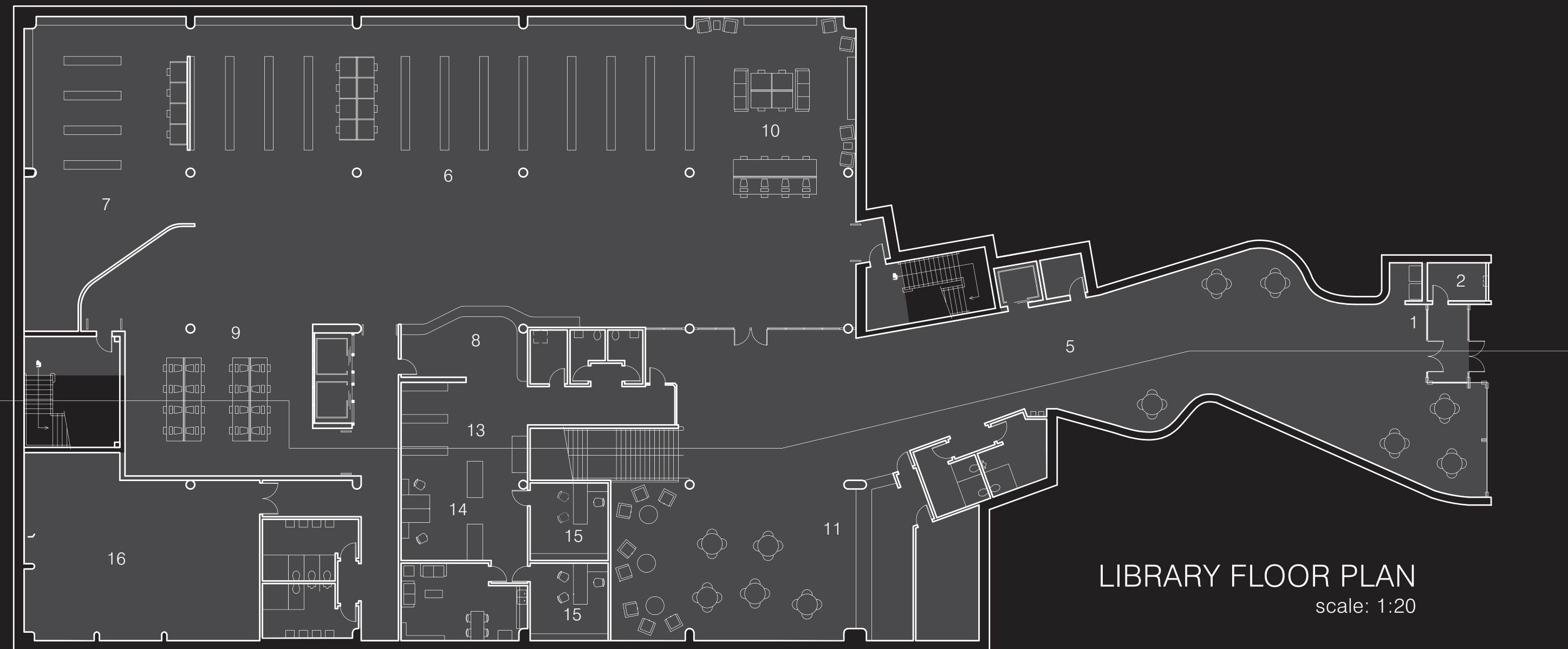
Being one of the first sites visible in the downtown Uptown area, the new Walker Library and the events taking place within it become noticeable to the passerby. The library now takes part in the active nightlife and streetscape of the area, rather than being a dark lot within it.

NORTHEAST PERSPECTIVE

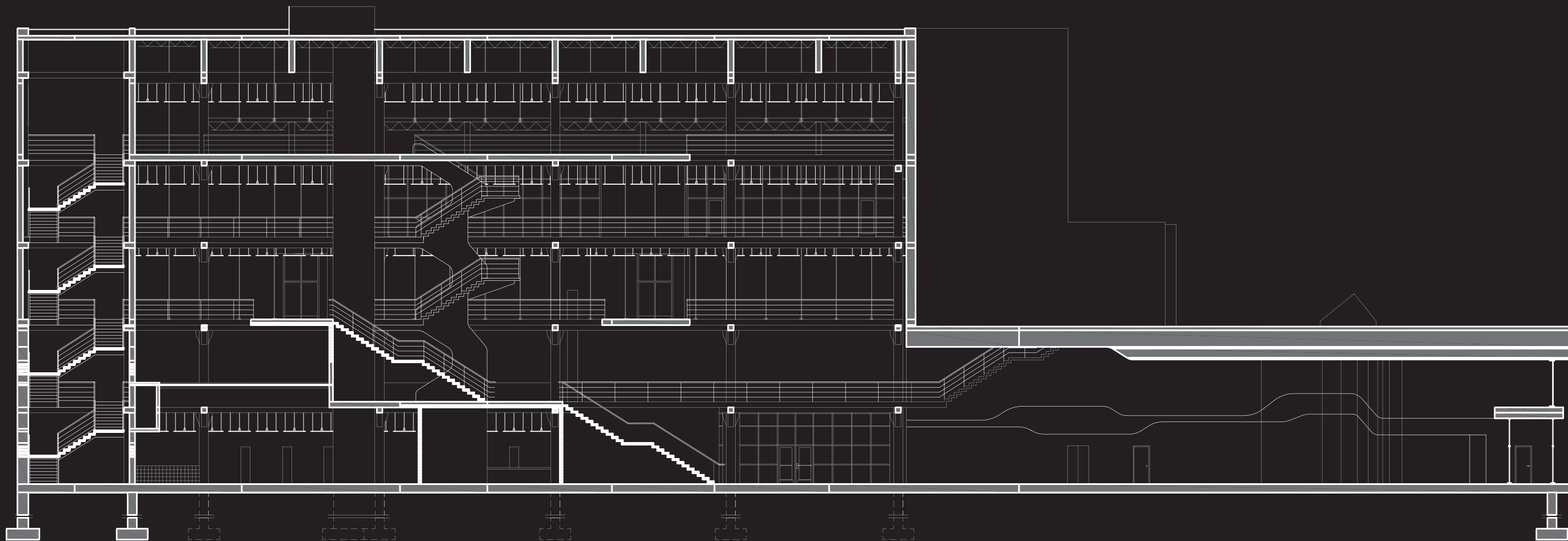




FIRST FLOOR PLAN
scale: 1:20

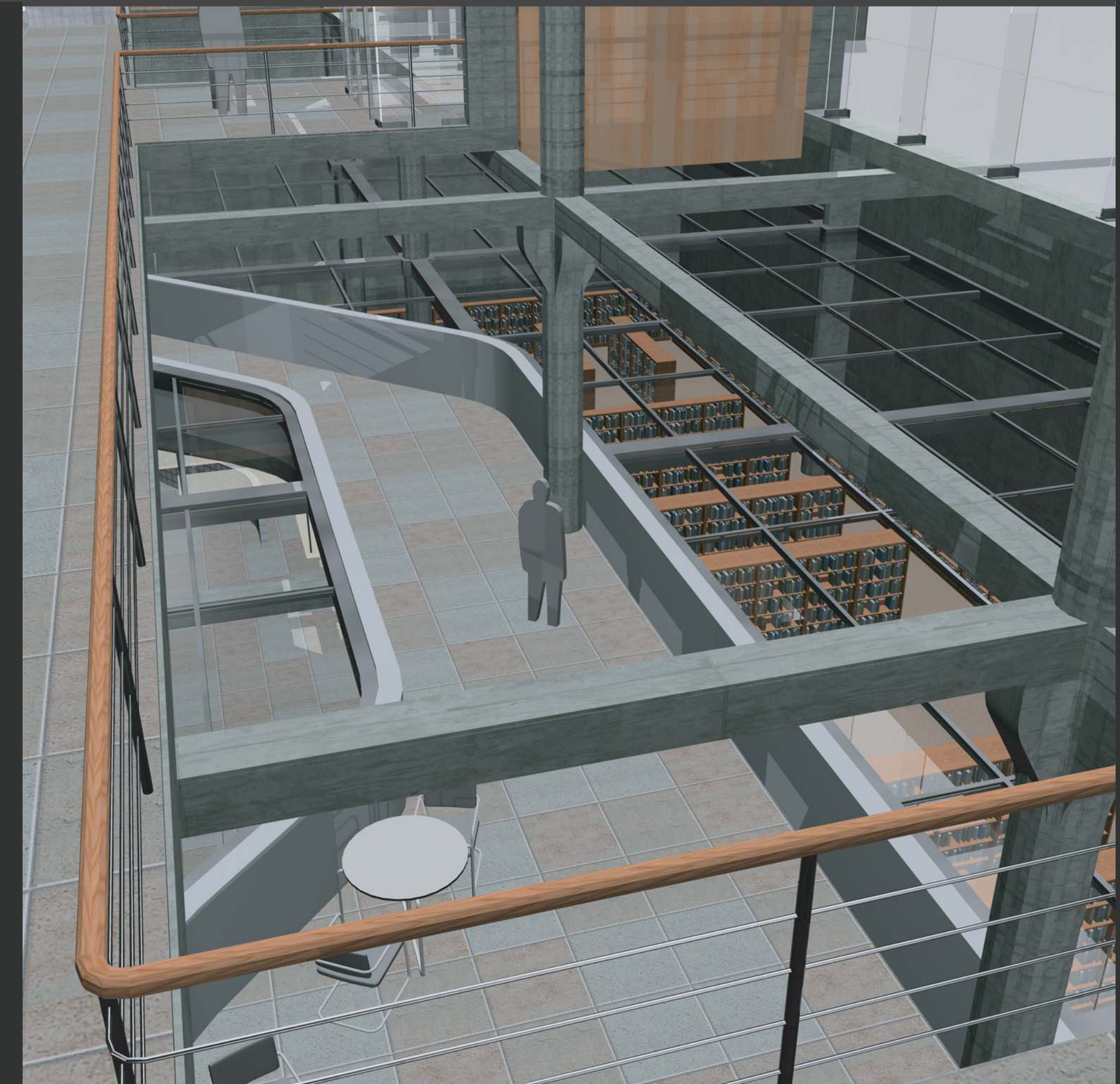


LIBRARY FLOOR PLAN
scale: 1:20



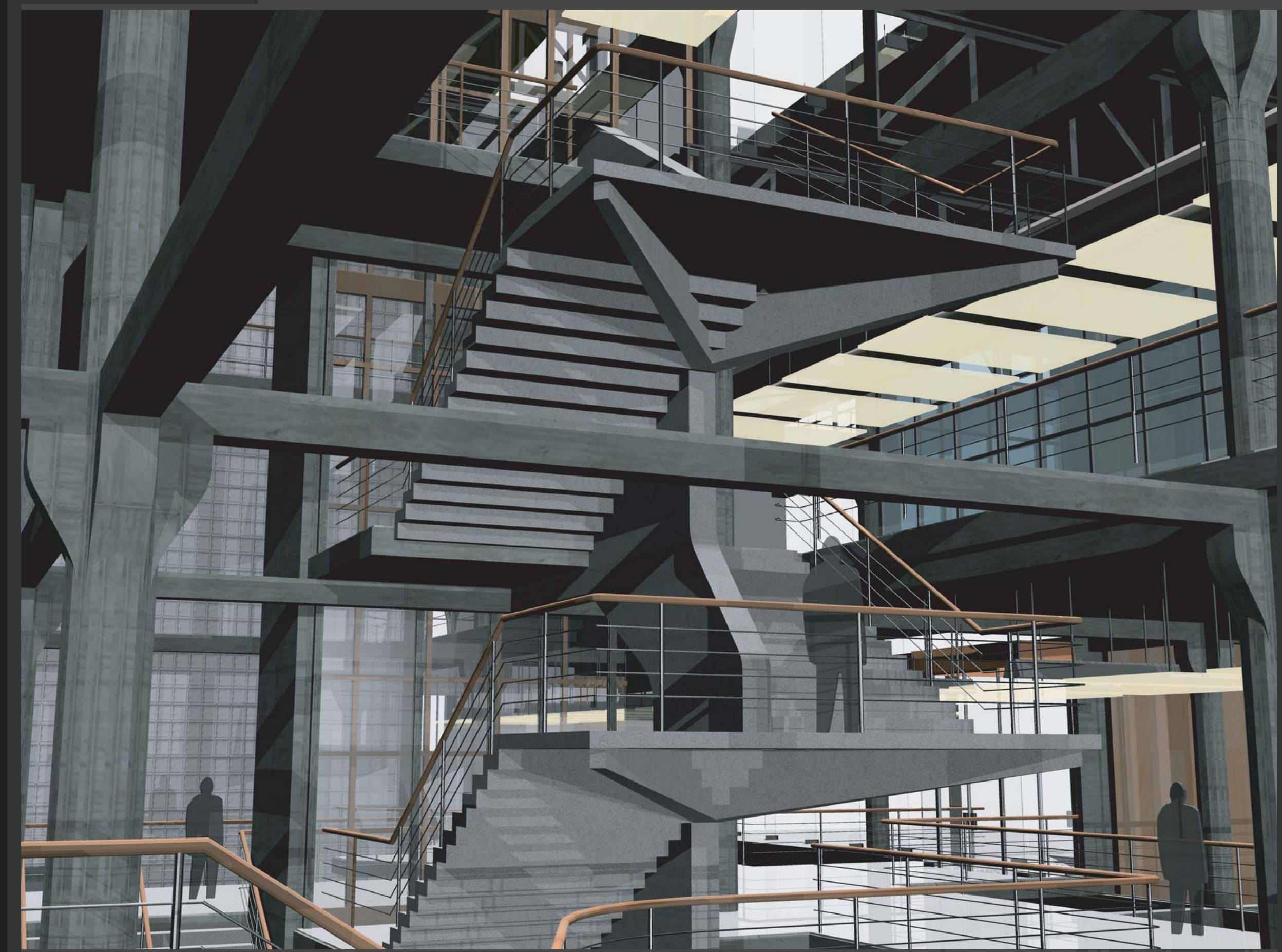
SECTION
scale: 1:20

LIBRARY SKYLIGHT

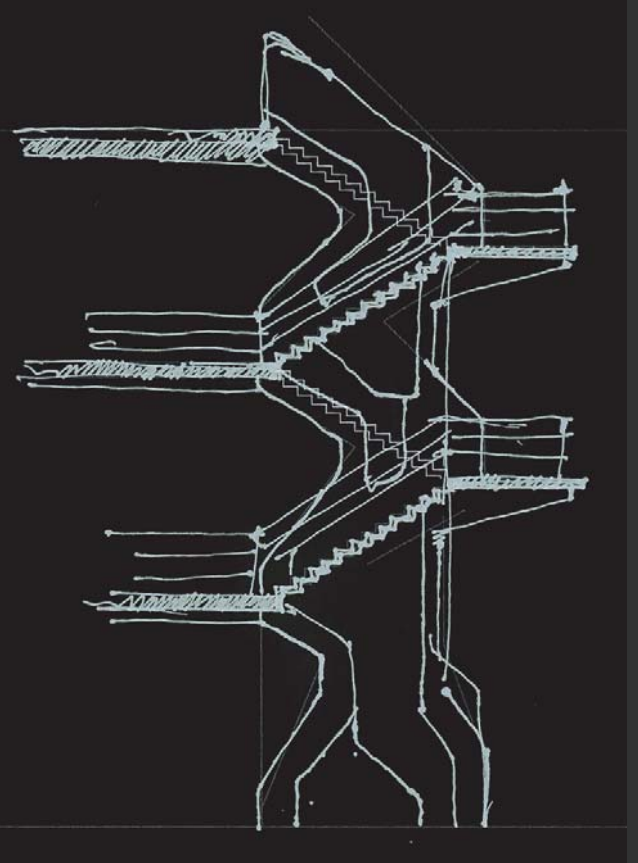


The view to the library below represents one of the many different views created by the voids in the floor plans. Different paths can be seen and then lost due to the plans maneuvering within the frame.

The library skylight is put in place to isolate the the stacks and reading spaces, while still allowing the maximum amount of light into lowest level of the building.

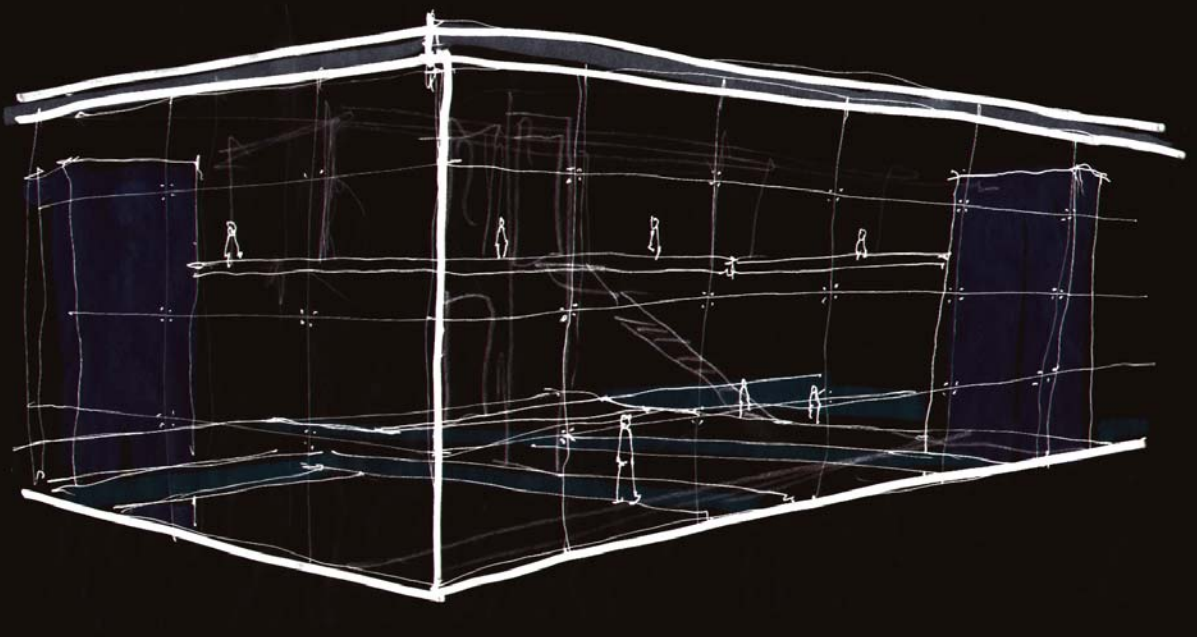


The central stair that rises to the upper floors appears to float free from the rigid frame that surrounds it. The stairway is constructed of site cast terrazzo and hangs from the central wall that rises from below.



CENTRAL STAIRCASE



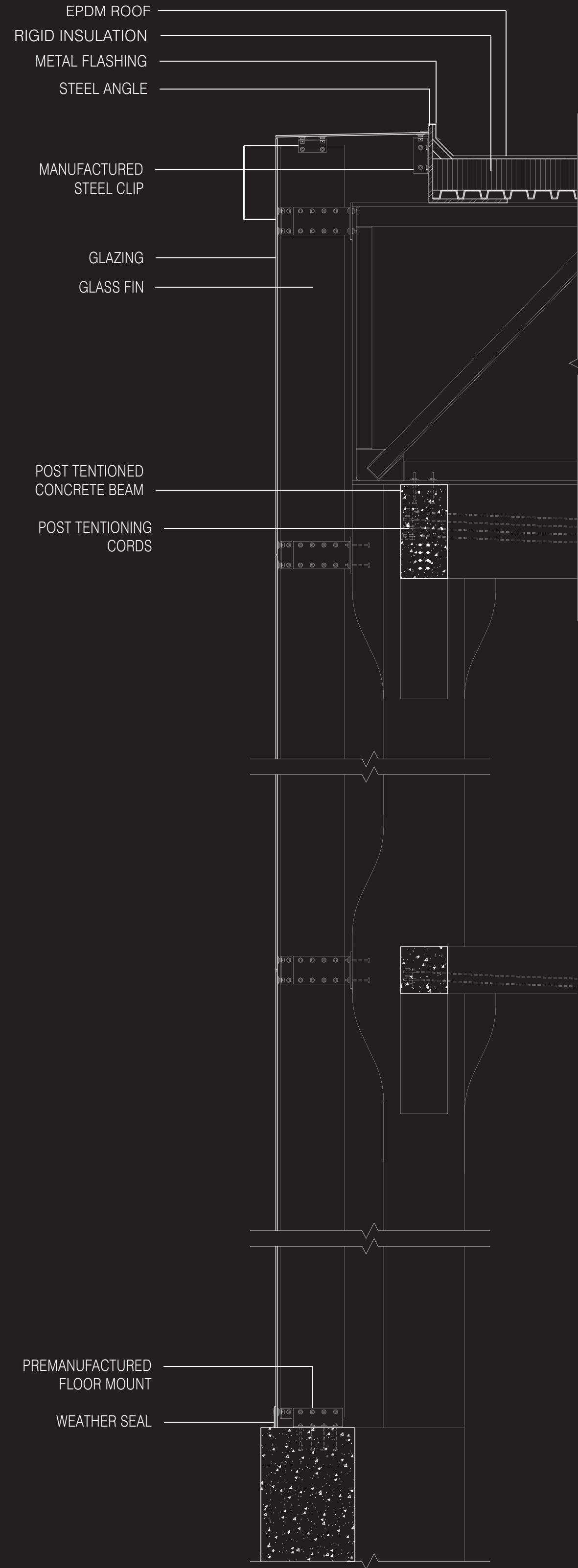


SOUTHEAST PERSPECTIVE

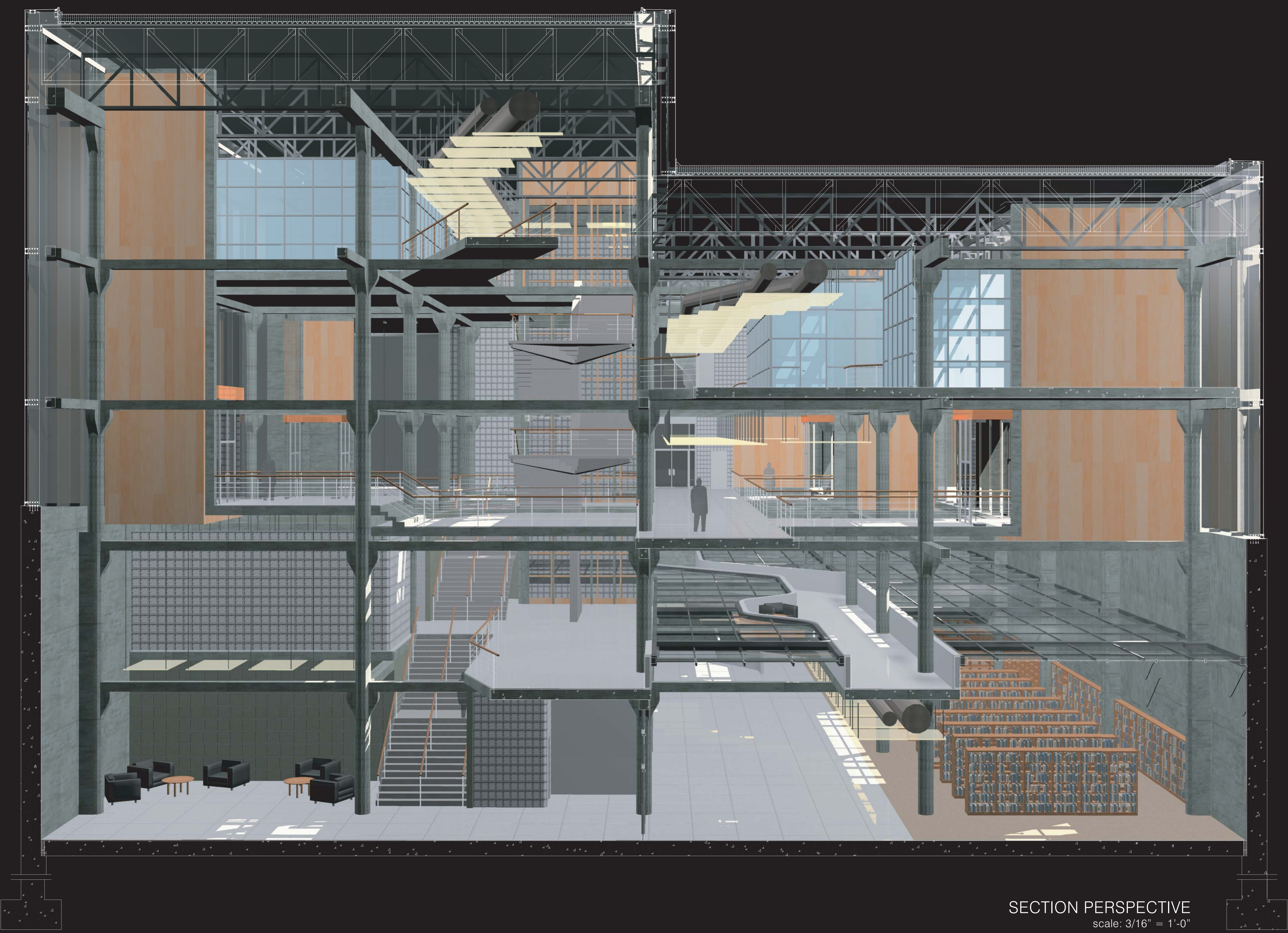
The southeast corner of the new Walker Library eases the previously hard corner with a small covered plaza. At the corner, a natural gathering point, pedestrians are provided a chance for shade or protection from the elements. The space above the plaza creates a unique opportunity for those within the library to stand essentially on the corner of Lagoon Ave. and Hennepin Ave. to gaze upon the Uptown area.

By raising the library to street level, the familiar scene of the brick apartment buildings and the narrow corridors that run between the buildings down to Lake Calhoun would disappear. To account for these well established corridors the concrete shear wall gives the feeling of a hard edge even though surrounded by glass, and the recession of the entry doors to the north provide depth and thus creates the illusion of the corridor.





WALL SECTION
 scale: 1/2" = 1'-0"



SECTION PERSPECTIVE
 scale: 3/16" = 1'-0"

The construction of the rigid concrete frame allowed for two major elements to take place in the design. The first was to have full height curtain walls. The construction of the glass fin curtain wall allows for a maximum amount of light to penetrate and filtrate down into the library along with providing views both in and out of the building.

The second thing the frame allowed for was freedom to move the plan within the building creating a network of spaces. Different floor plans on each level create a 3D network of spaces both in plan and section that can be seen working from both inside and outside the building.

