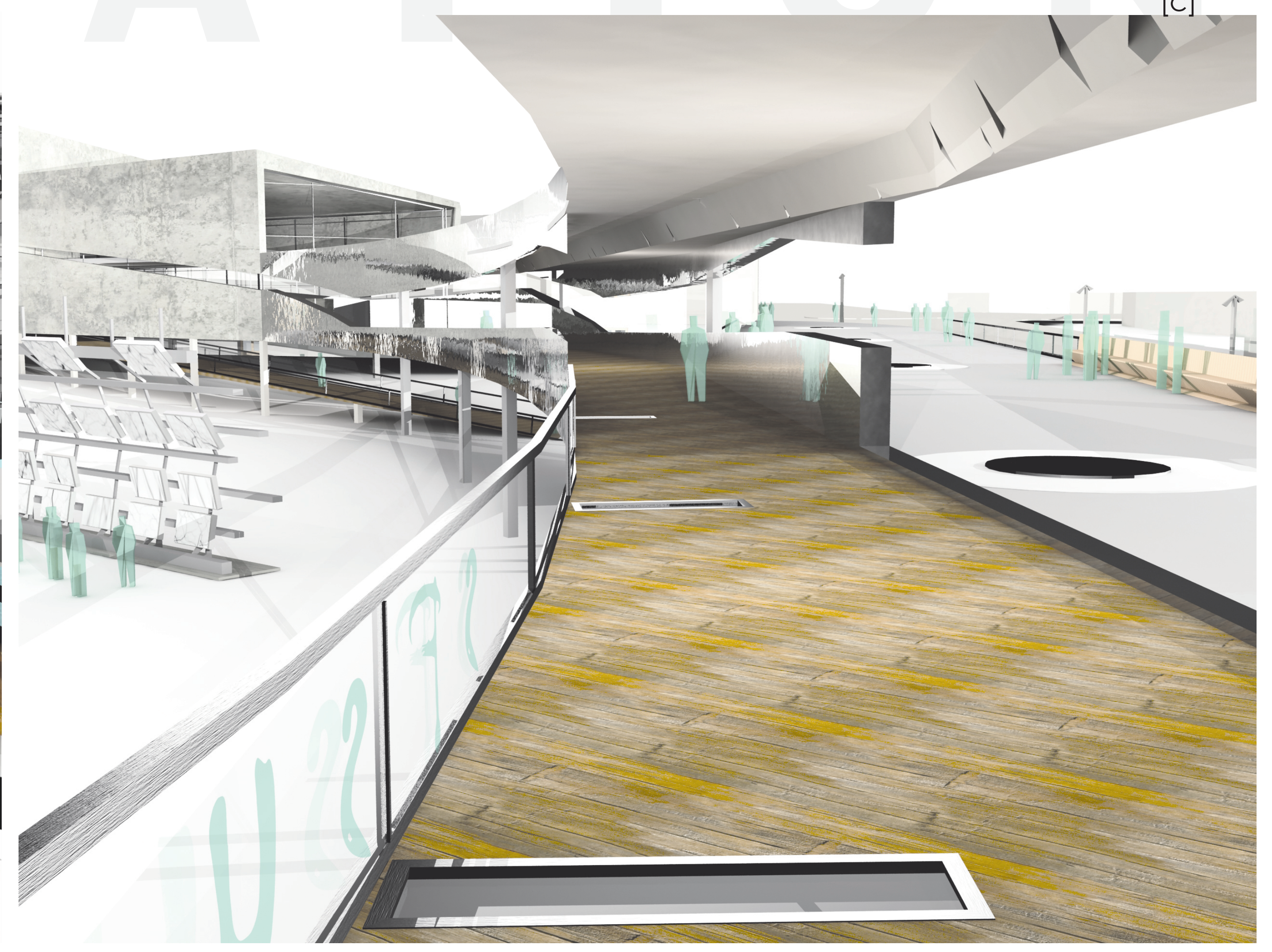
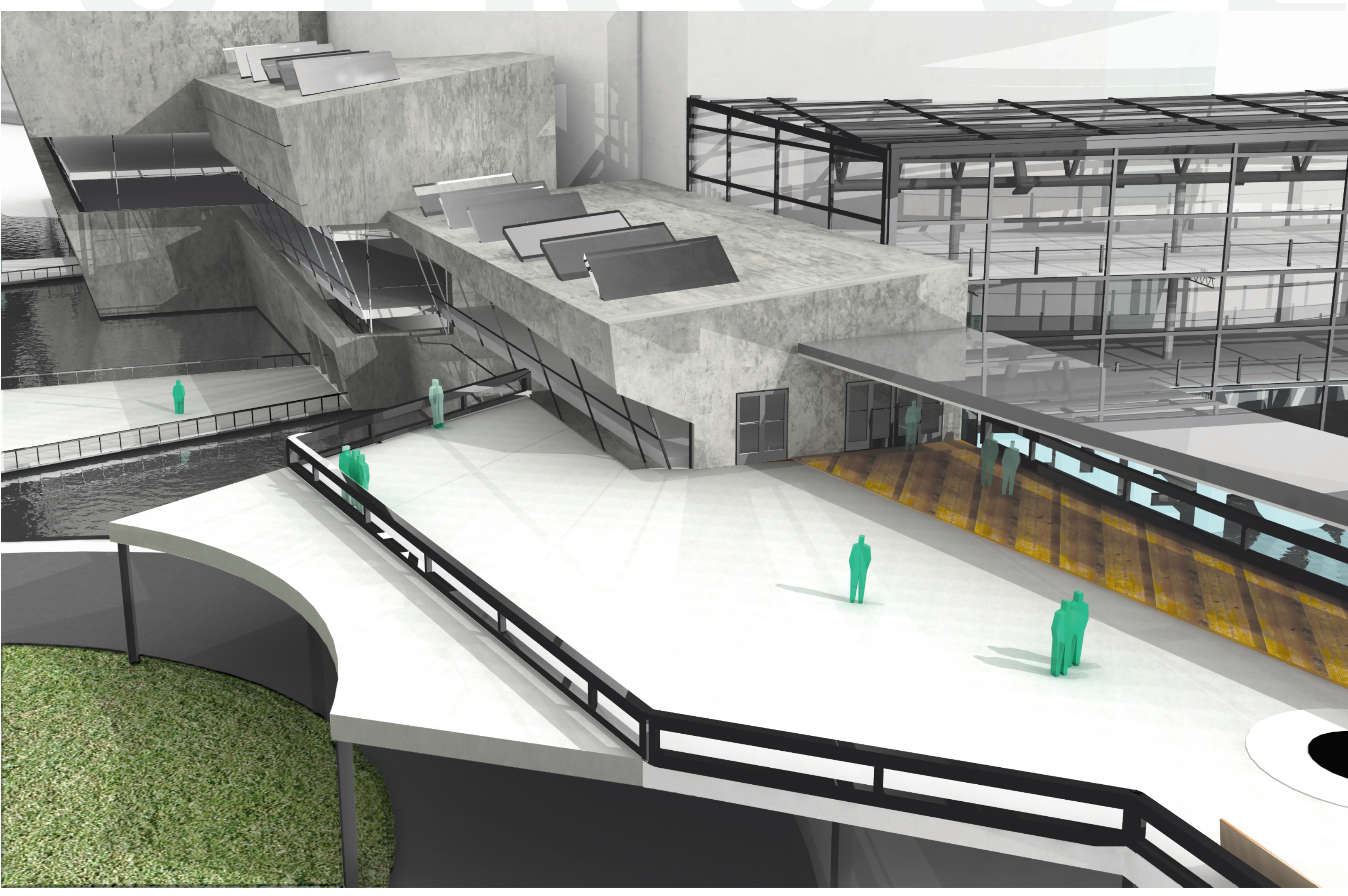


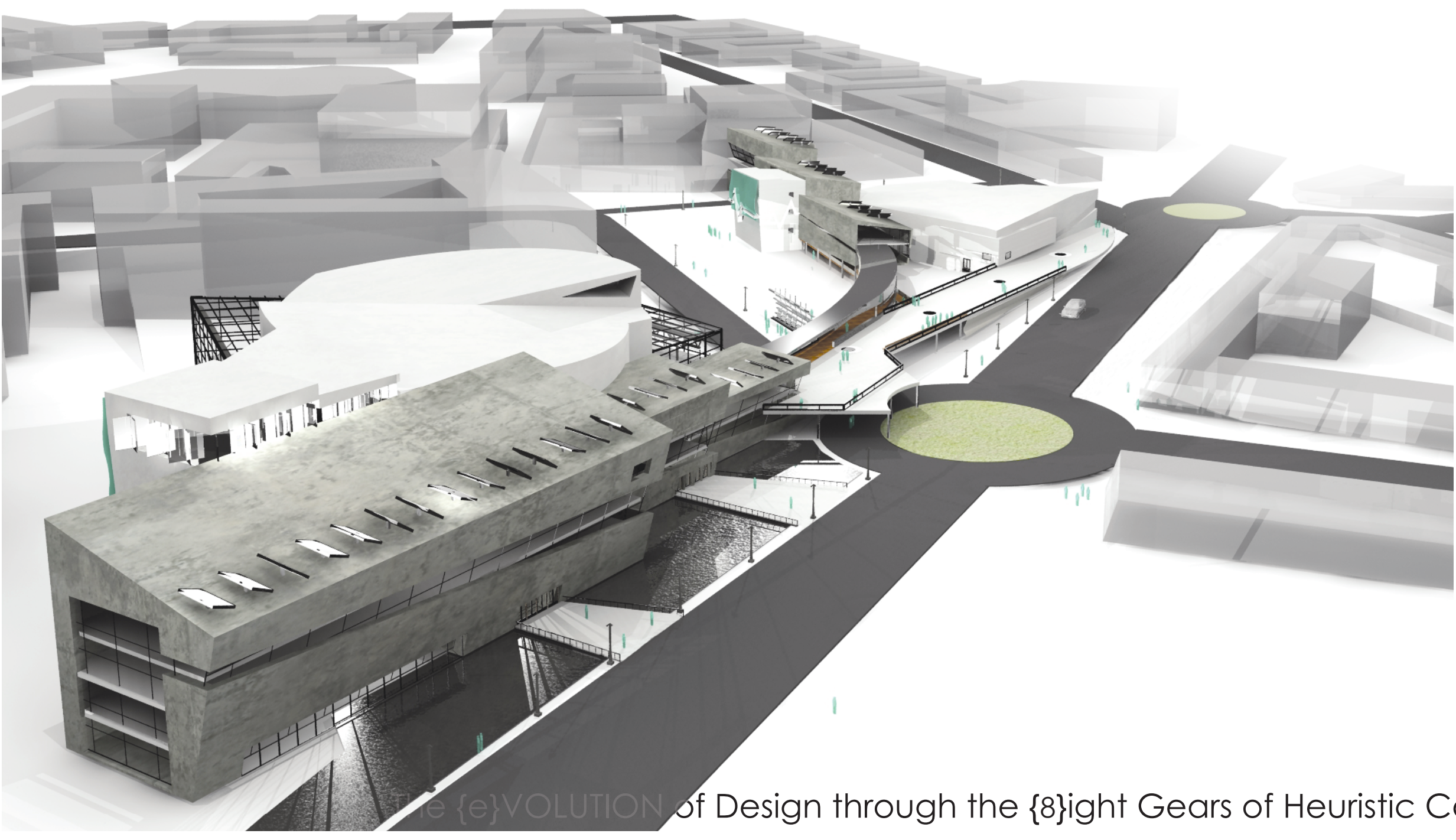
CIRCULATION



Adjoining onto the existing Creative Arts Department The [4]ourth Wall provides the growing department with the facilities that they need today and prepares them for the future.

The *Circulation Link* provides a dynamic bridge between the more private spaces and the more public spaces. This link also incorporates a plaza for relaxation and studies as well as provide overflow for the performance spaces. The link blends circulation from not only the two parts of the complex but also incorporates pedestrian traffic from the street level. Users are subjected to a variety of different view points as well as interacting with the natural phenomena of the site as they travel from interior space to exterior space. This link allows multiple levels of interaction as well as offer multiple scenic vistas and relaxing nodes.

The Multi-Media wall is a node where everybody can see what is happening in the Creative Arts Department, and also a place to present some student work.



...of Design through the (8)ight Gears of Heuristic Consciousness...

