

Architecture of Aging

The Impact of Architecture on Palliative Care and Hospice

Imagine:

receiving news that you only have a few months to a year left to live, where would you want to spend your final moments?

Serenity

peacefulness

quietness

relaxation

tranquility

stillness

restfulness

serene

placidity

calm



Outward Bound Micro Cabins
Location: Rocky Mountains, Colorado



Hospice De Liefde
Location: Rotterdam, Netherlands



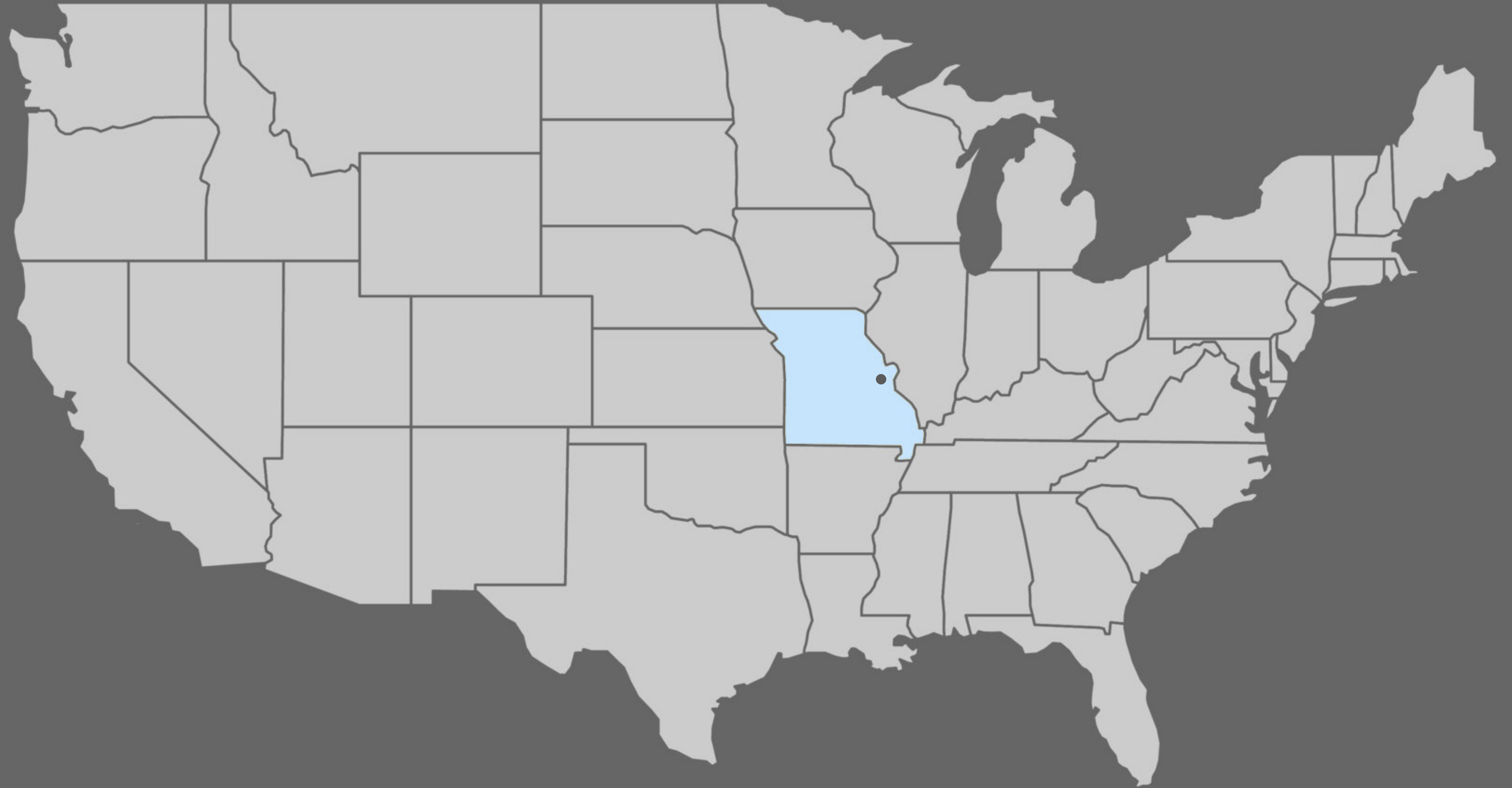


Overall Goal:

to provide a space for terminally ill patients that promotes comfort, mental and physical wellbeing.

Design Process.

Eagles Landing Care Center



Saint Clair, Missouri



Materials.



Design Solution.

Eagles Landing Care Center





Meramec
River

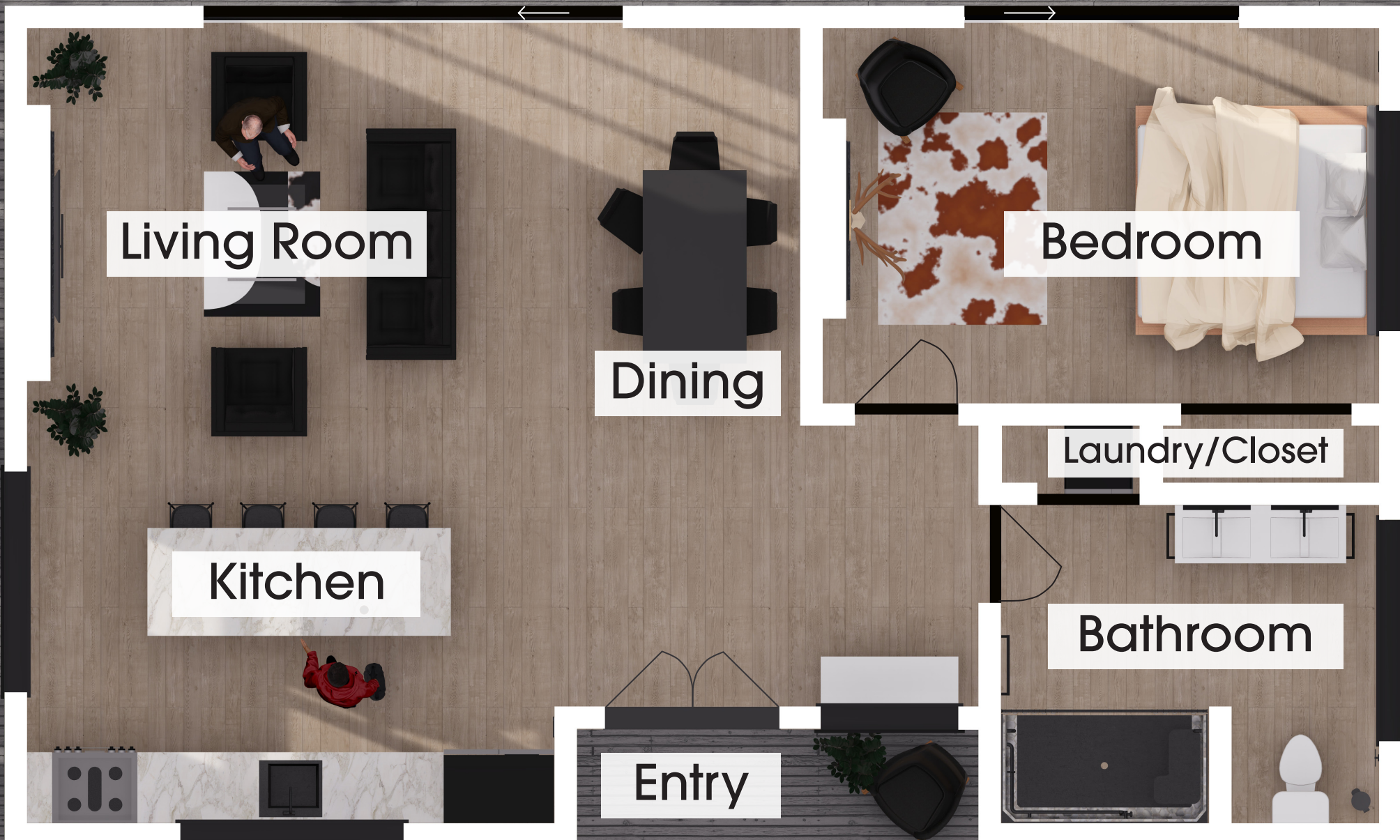
Mill Hill Road

Site Access

North



Care Unit Floor Plan





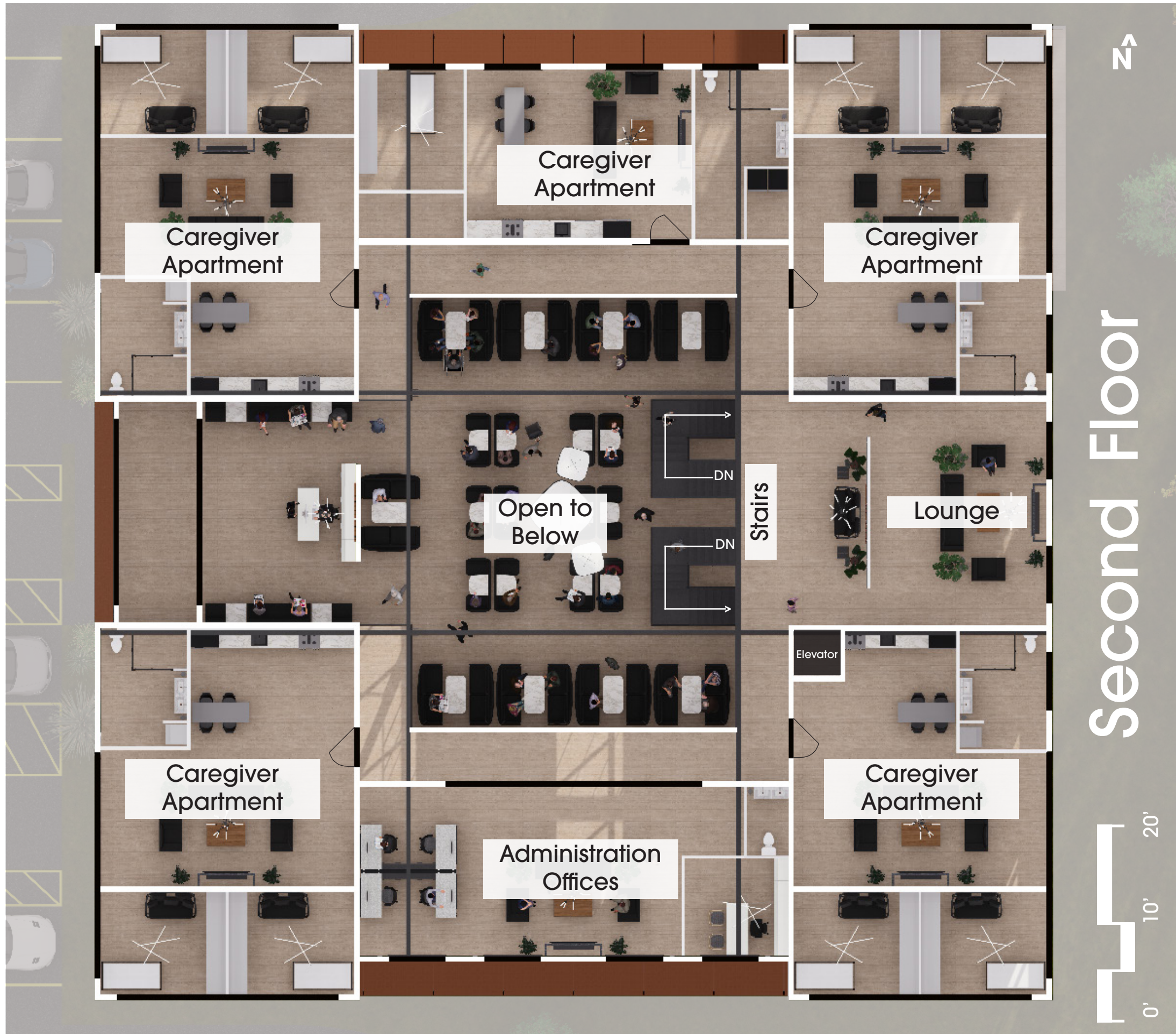


Eagles Landing

800 277







Second Floor





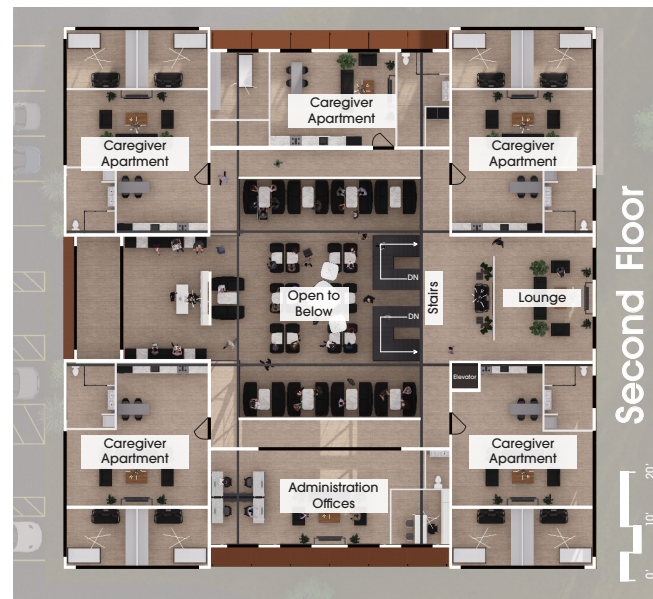
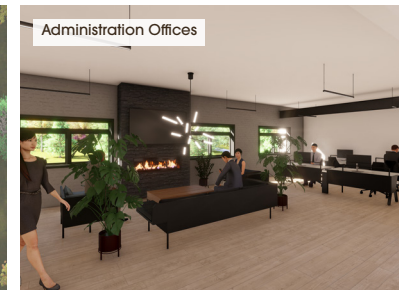




Thank You
For Your Time!

Architecture of Aging

The Impact of Architecture on Palliative Care and Hospice



Slides in medicine are being made every day, the average lifespan, in turn, is also lengthening. The choice of how one spends their final time becomes ever more prevalent. In times of chaos following news of terminal illness and sickness, comes time for contemplation and peace. Meaningful spaces to promote peace and healing, allows one to truly live in the important moments at the end of one's life. Emphasizing a simplistic living space through minimized square footage allows the focus to shift from unimportant tasks in life, to the meaningful moments. Interaction with nature promotes relaxation and time for thought. Therefore, creating these spaces to live within nature, for those in need of palliative and hospice care, brings a renewed sense of strength and life. Creating dynamic healing spaces allows one to live fully and comfortably in their final stage of life, both mentally and physically. Eagles Landing, a hospice and palliative care center, allows one to create a lasting memory that remains with those that live on. Strength and peace brought through nature and minimalist approach to create a place to live when a lifetime becomes limited.

How people die remains in the memory of those who live on. -Dame Cicely Saunders