

# Horace Mann Elementary School | *modernized*

● The **Goal**

● The **Reason**

● The **Audience**

● The **Site** and **Research**

● The **Proposal**

# The Goal

To create a **safe** place for students to grow, build positive relationships and to start their educational career off strong.

# The Goal

To create a **safe** place for students to grow, build positive relationships and to start their educational career off strong.

To design a floor plan that doesn't only accommodate the students but accommodates the staff, the public, and local law enforcement to maintain a positive effect on the community, as well as keep everyone safe.

# The Reason

A school's safety has been a hot topic for the nation for decades, and each year, the amount of school shootings keep increasing year after year.

# The Reason

A school's safety has been a hot topic for the nation for decades, and each year, the amount of school shootings keep increasing year after year.

No student deserves to be scared for their safety when at school, and parents shouldn't be worried about their safety either.

# The Reason

A school's safety has been a hot topic for the nation for decades, and each year, the amount of school shootings keep increasing year after year.

No student deserves to be scared for their safety when at school, and parents shouldn't be worried about their safety either.

Some schools were built so long ago that the classroom styles are out of date and may not be an effective learning space for the students of today.

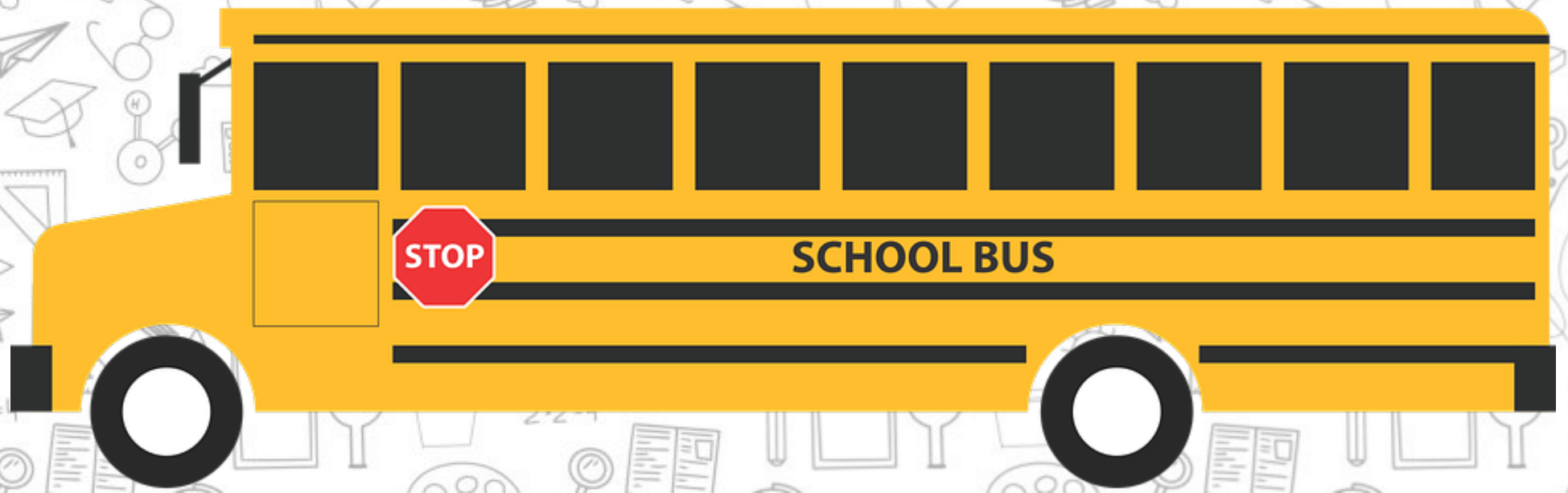
# The My Reason

Kids today are the future; they shouldn't have to worry about being physically attacked at school. Their full-time jobs are to do homework, study for tests, and to simply grow up.

# The My Reason

Kids today are the future; they shouldn't have to worry about being physically attacked at school. Their full-time jobs are to do homework, study for tests, and to simply grow up.

From being a bus driver, I have heard and seen kids share what they think of school many times, and more often this year, I have been asked if they could stay on the bus with me longer.





# The Audience



Fargo Public School District (FPS) of North Dakota, which makes the budget and sets the requirements for the overall structure.

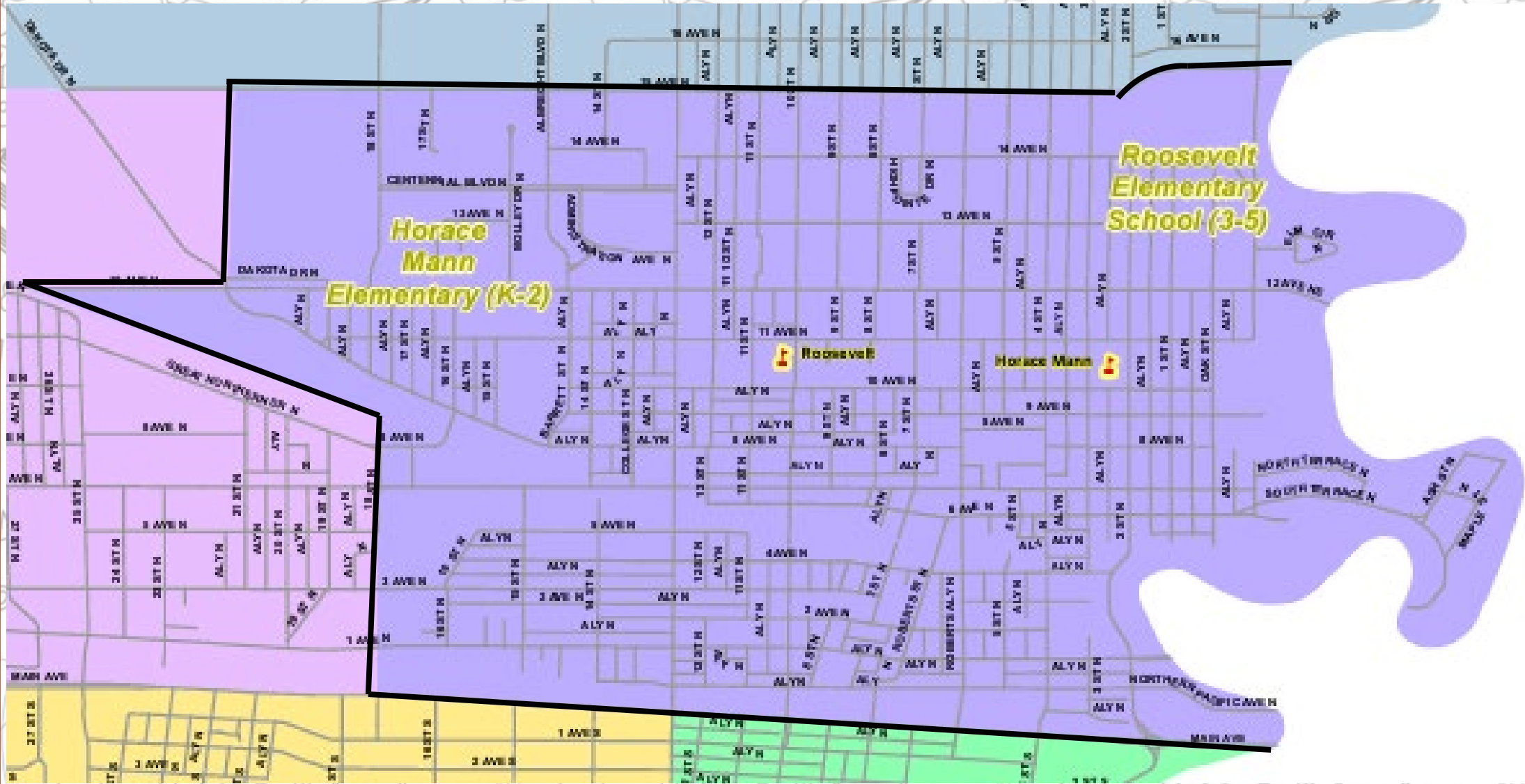
# The Audience



Fargo Public School District (FPS) of North Dakota, which makes the budget and sets the requirements for the overall structure.

However, students, the staff, the community and the local law enforcement were also considered in the design of the interactive building...

# The Community



# The site

1025 3<sup>rd</sup> St. N.  
Fargo, ND 58102



# The site

1025 3<sup>rd</sup> St. N.  
Fargo, ND 58102

Part of North Fargo, the buildable space is 564' by 300' and has the current Horace Mann Elementary School.



# The site



The current Horace Mann Elementary School was built in 1915 and since then, the only remodeling that has occurred, was simply the basic upkeep of such an old building.

# The site



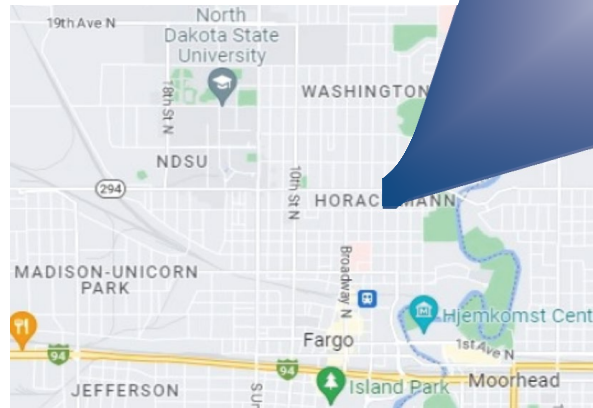
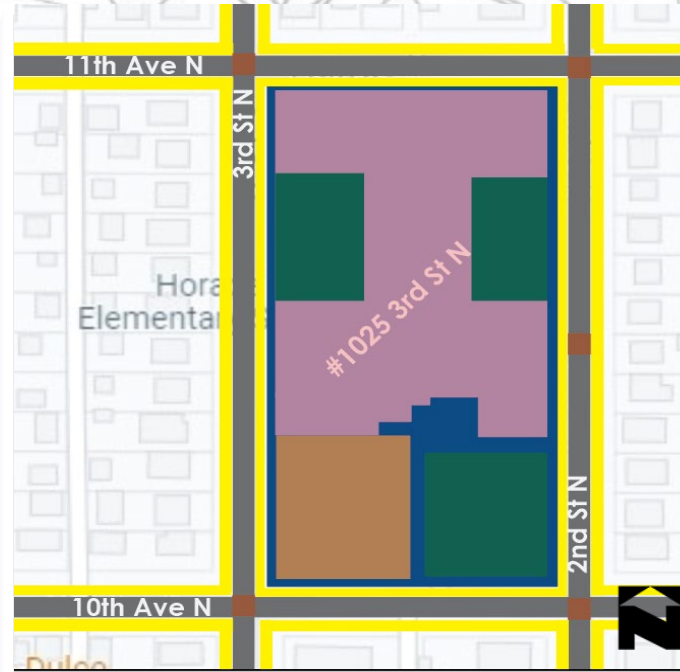
The current Horace Mann Elementary School was built in 1915 and since then, the only remodeling that has occurred, was simply the basic upkeep of such an old building.

The school now only holds Kindergarten through second grade due to the lack of space. Roosevelt Elementary is its partner and takes the third through fifth graders.



# The site

- Lot
- Vehicular Traffic
- Pedestrian Traffic
- Controlled Crosswalk
- Building Footprint
- Greenery
- Parking / Bus Pick Up and Drop Off

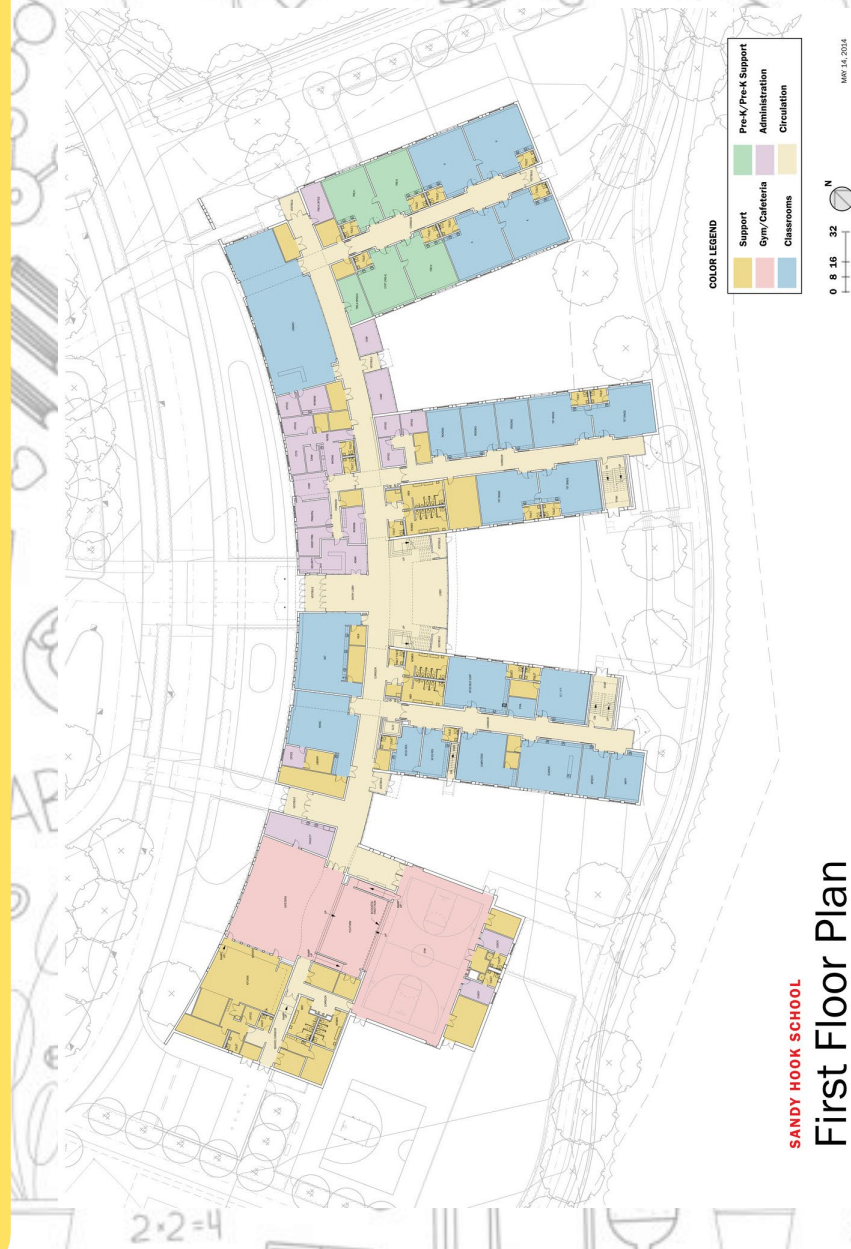


## FUN FACT





# The Research



Safety for the students and staff doesn't always have to mean a big piece of expensive security system, but it can be just the simple automatic doors that lock on a schedule, and which can be locked or unlocked electronically. Systems like this keep a point of access to a minimum, especially during school hours.

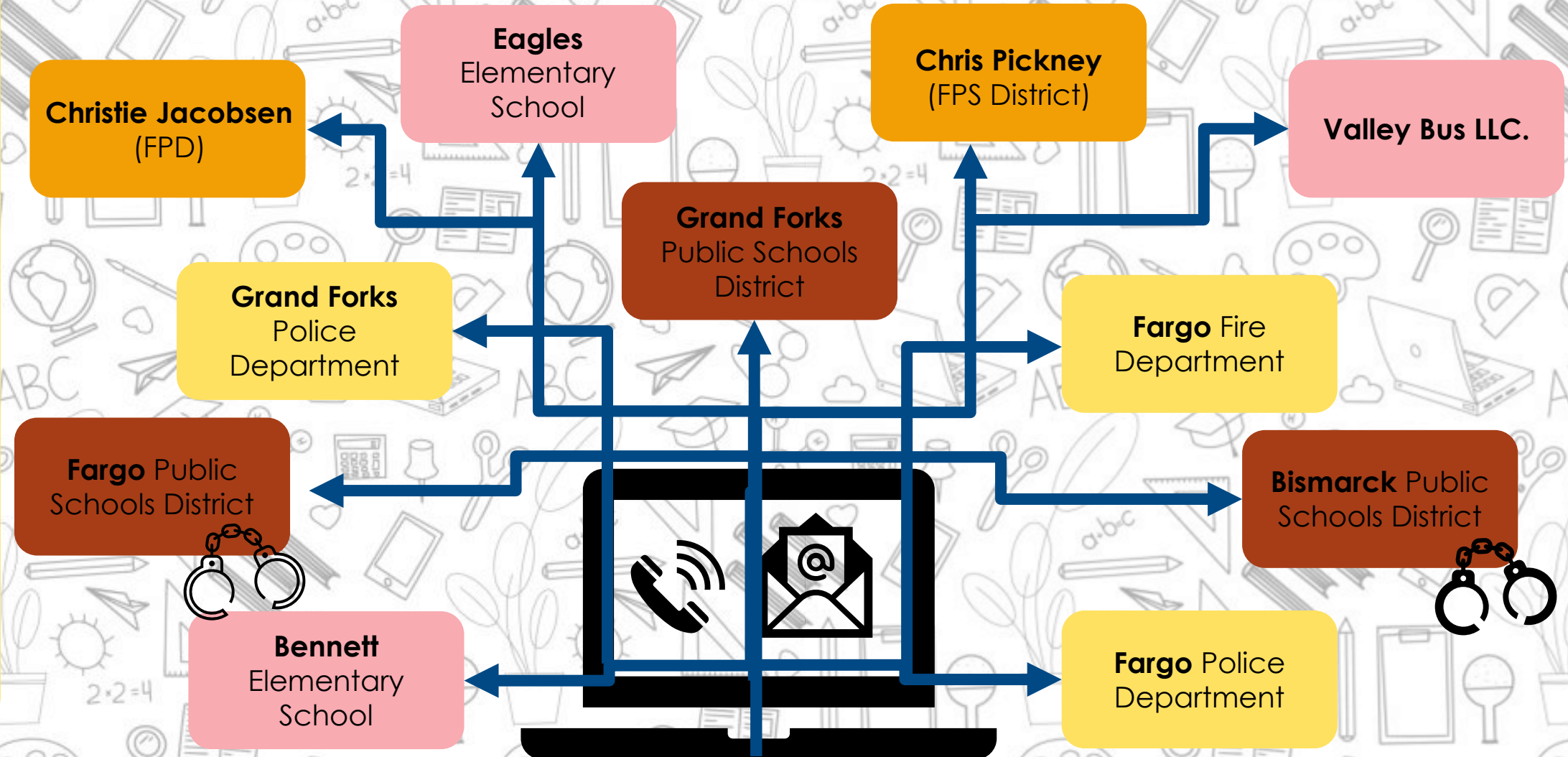
# The Research





# The Research

Other than the normal internet search for information, I made a point to reach out to people who are apart of a school district, specifically in North Dakota.



# The Proposal

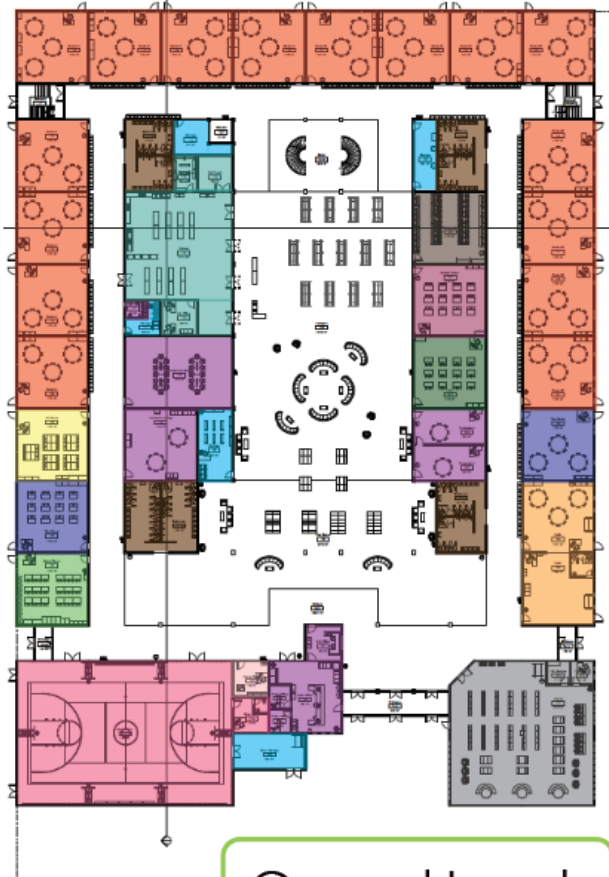
By tearing down the current Horace Mann Elementary School, we can take advantage and build an integrated and safety focused school that can hold more students and be updated with the latest research for an effective learning environment.



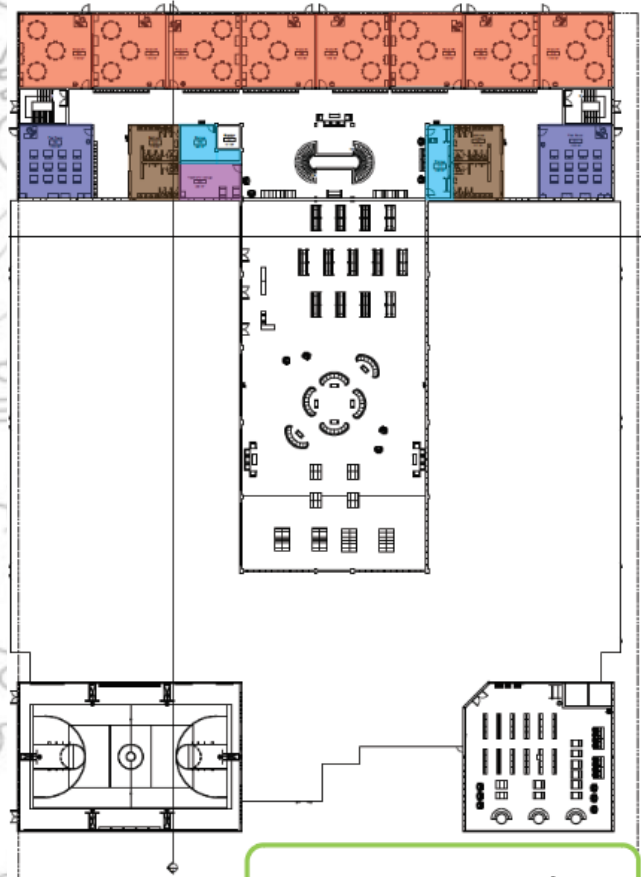


*vimeo*

# Floor Plans



Ground Level



Upper Level

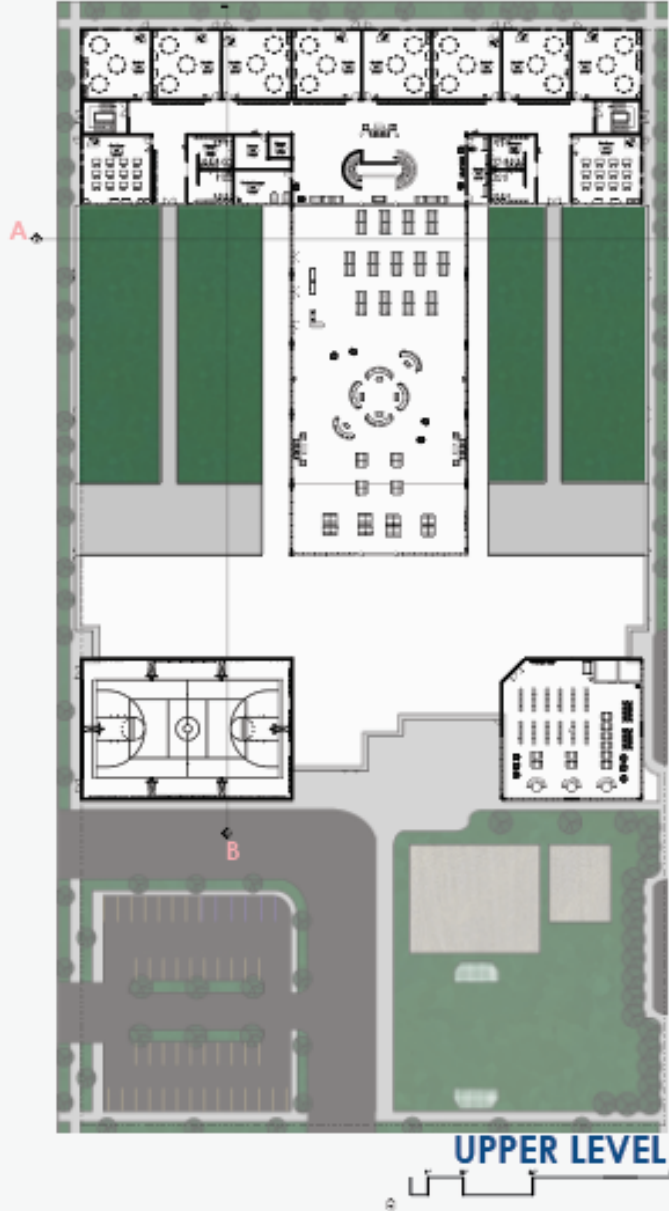
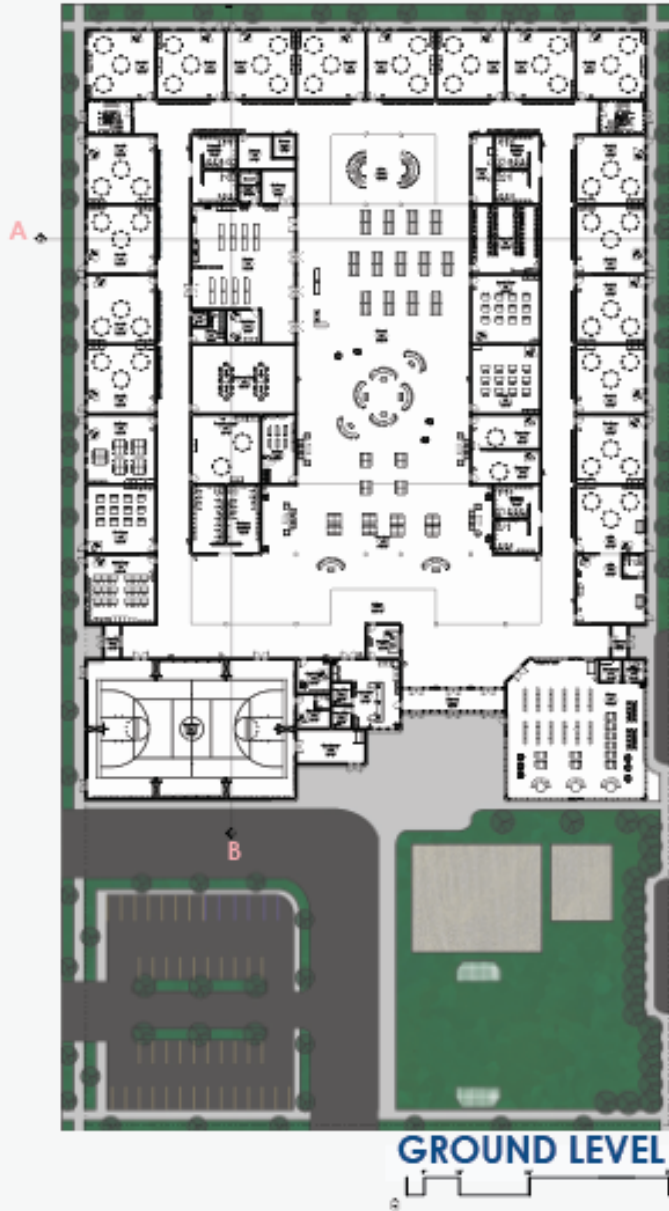
## Space Legend:

- Classrooms (4/grade)
- Kitchen
- Computer Lab
- ILC

- Speech
- Bathrooms
- Administration Spaces
- Art Room
- Copier Room
- Gymnasium

- Storage / Mech. Room
- Library
- Special Education Room
- Music Room
- Flex Rooms

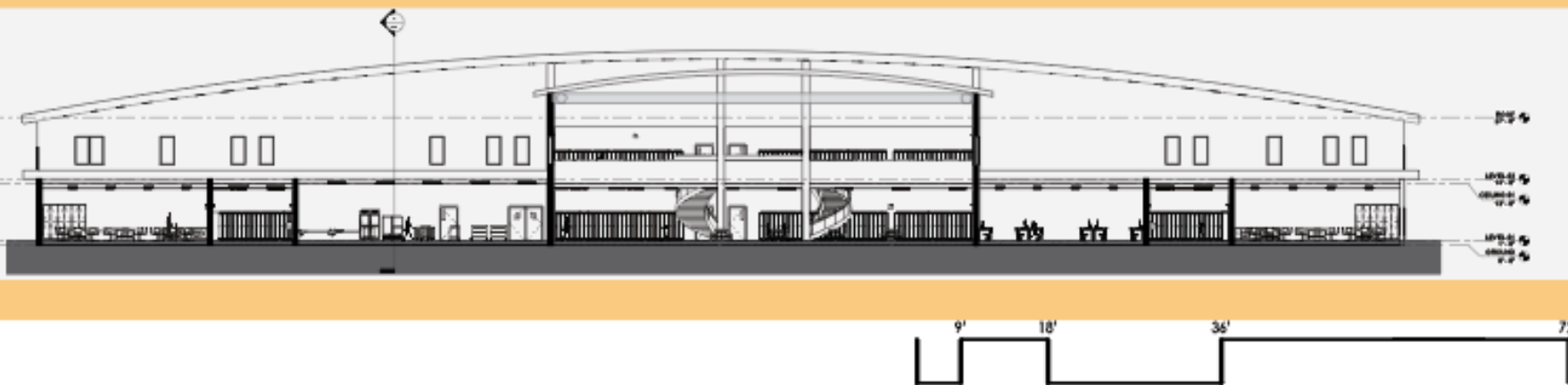
# Floor Plans



TYPES OF SPACES	ND AVERAGE GSF (SQFT)	Design Solution GSF (sqft)
Kindergarten Classrooms (4 Total rooms)	3,800	4,900 1,225 / Classrooms
Grades 1 - 5 Classrooms (4 Rooms / Grade)	18,000	24,500 1,225 / Classrooms
Administration / Offices	8,000	6,806
Storage / Mechanical Space	5,000	3,909
Gymnasium	6,000	7,593
Library	2,000	4,678
Cafeteria	2,500	12,809
Flex Space	2,000	9,709
Outdoor Space	68,170	45,460
Parking	20,000	21,400
Total	135,470	141,764
Total SQFT Available	170,000	169,200



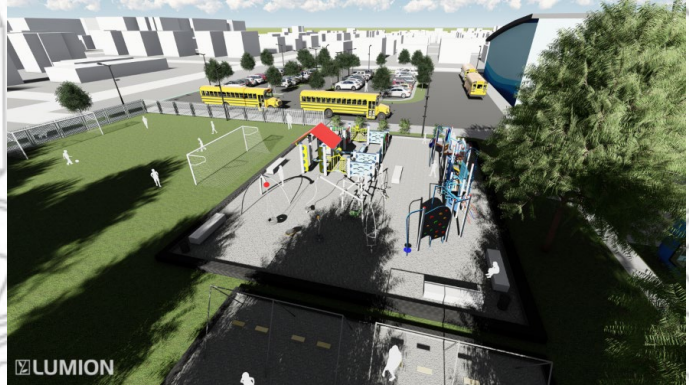
SECTION CUT A



SECTION CUT B



# Outdoor Spaces



Green space is limited compared to the size of the school and as a result, I took advantage of the flat roof and used it for more outdoor space. For the time being, it will be an educational source for the students, but is still available for growth if more classrooms were needed.

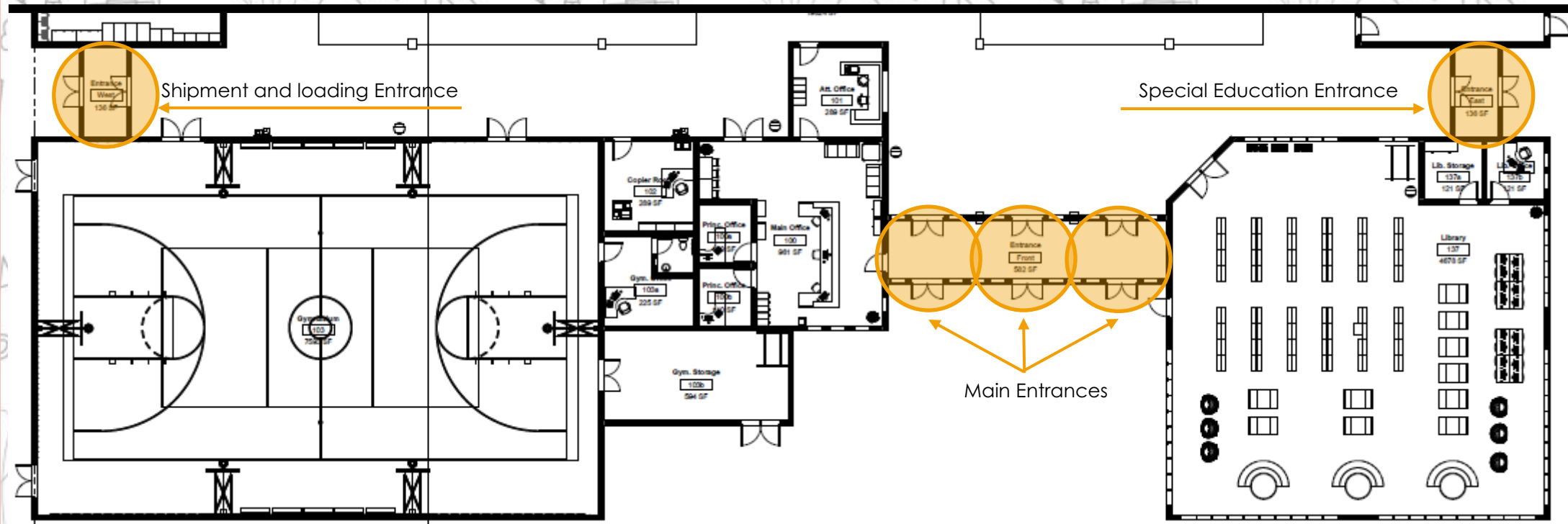


# Playground

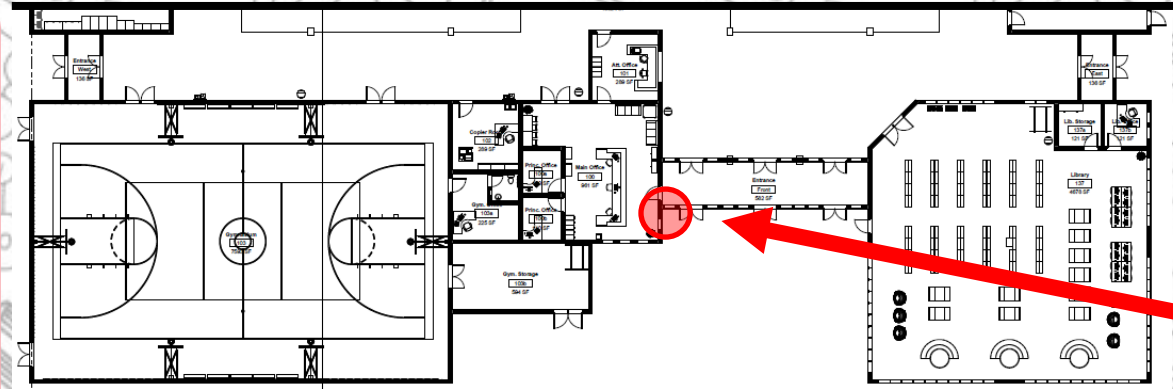


# The Entrances

There are only five entrances to the building, three doors (main entrance) on the south end, and one door on the west and east side for the Special Education class, and for equipment, shipments, etc.



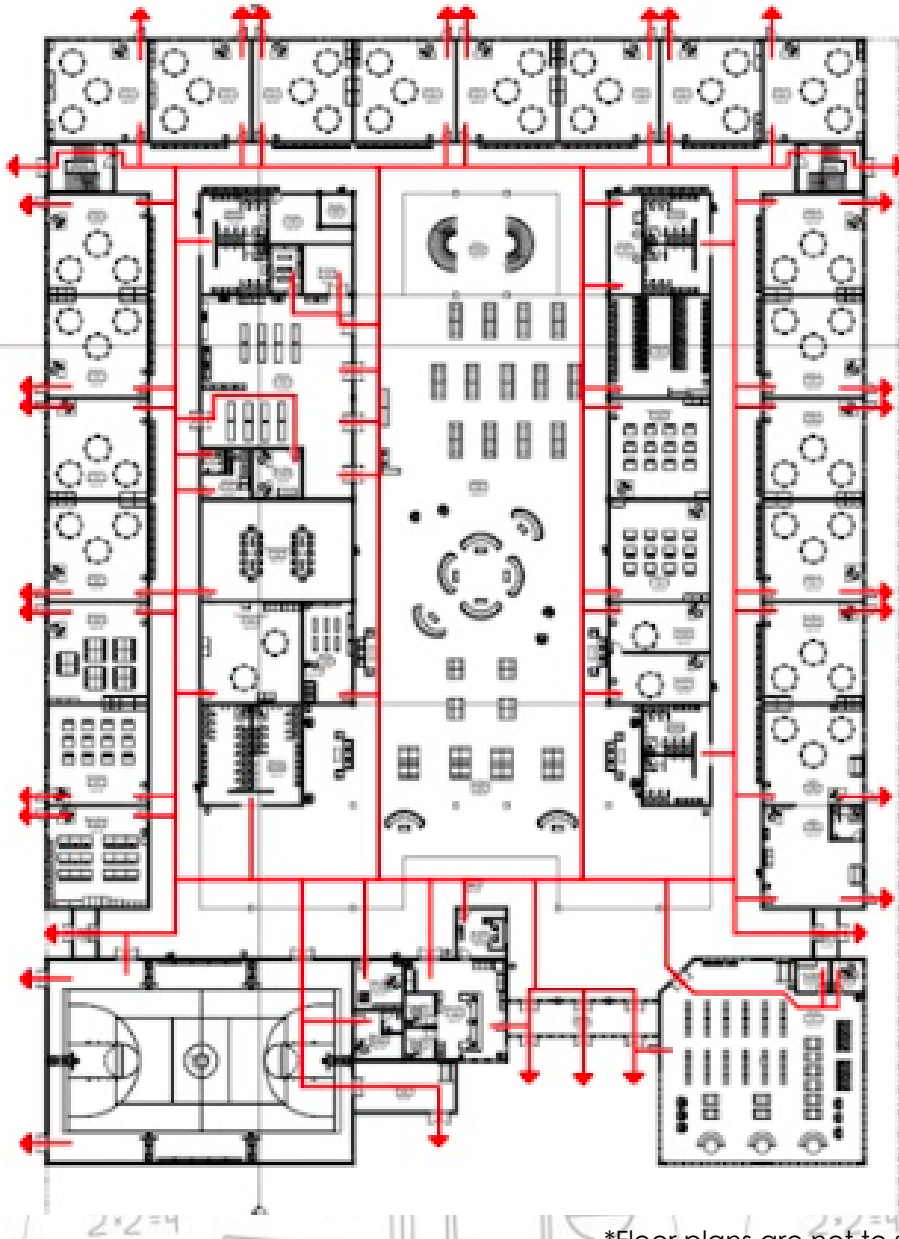
# The Entrances



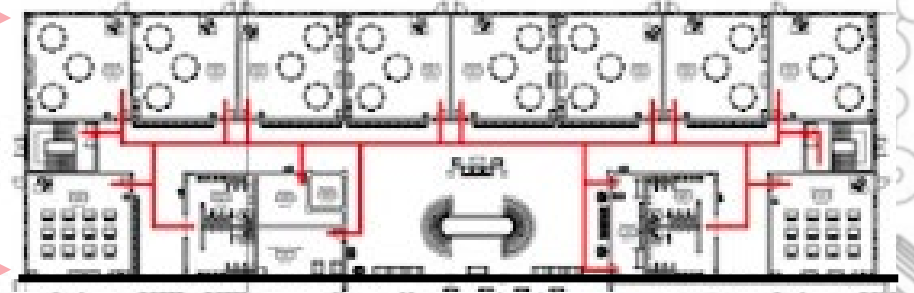
The main entrance, and the Special Education entrance (east side) are the only doors that are open for the beginning of the school day, and the end. Otherwise, the doors are locked and one set of doors at the main entrance can only be unlocked if an office staff allows it to be.



# Safety Routes



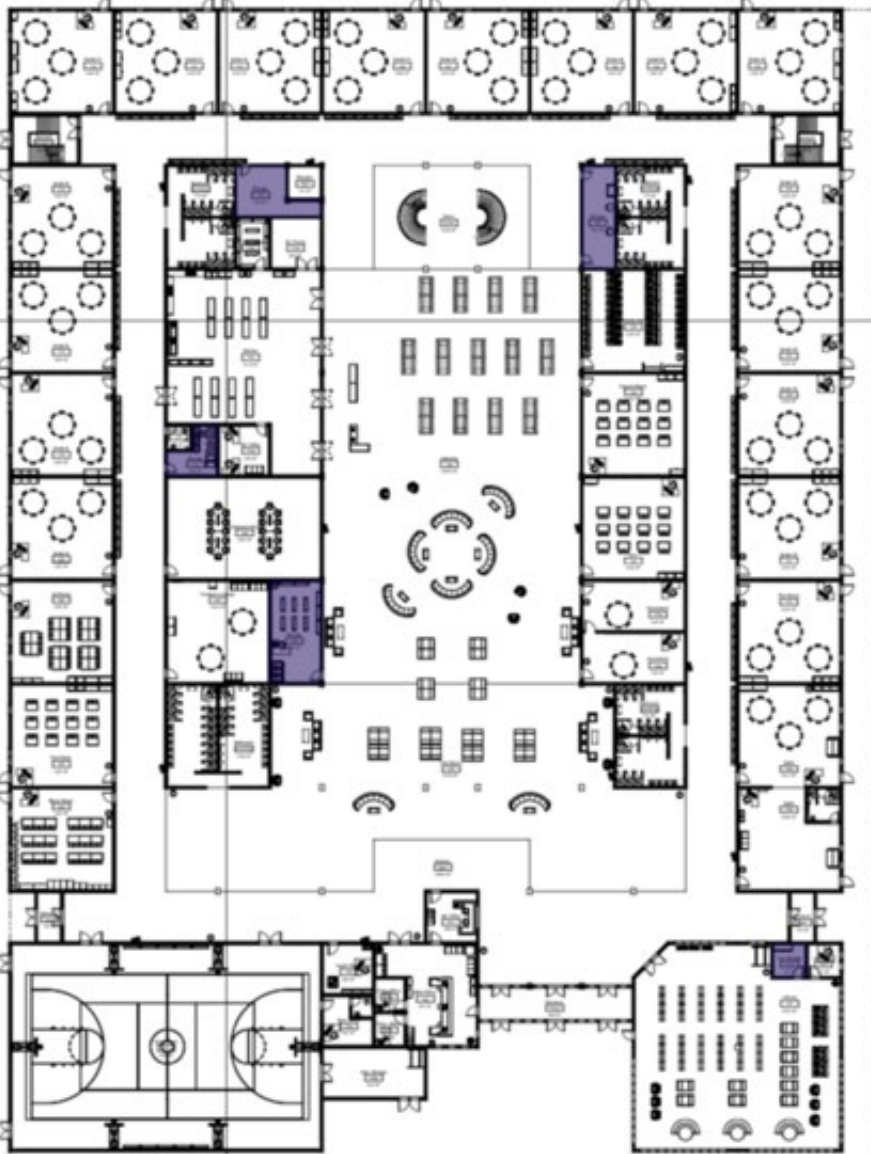
Second  
Level



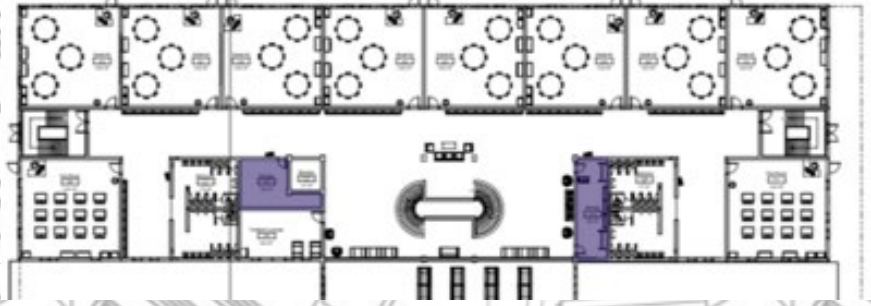
With open discussion classrooms, the space encourages interaction and education, students can be provided a strong foundation to start their learning career, as well as keep them safe with multiple exits, only a few entrances, and places built to keep them hidden if needed.

\*Floor plans are not to scale.

# Safety Rooms



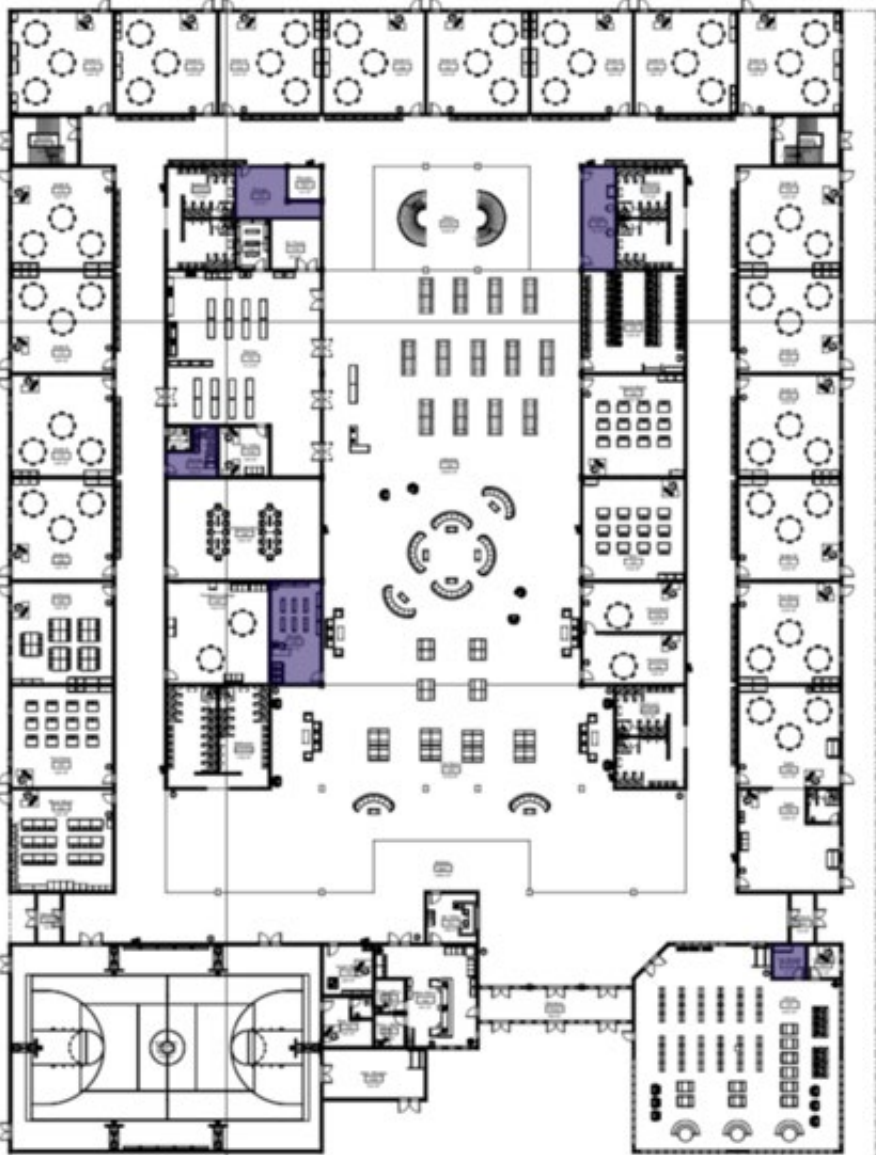
Second  
Level



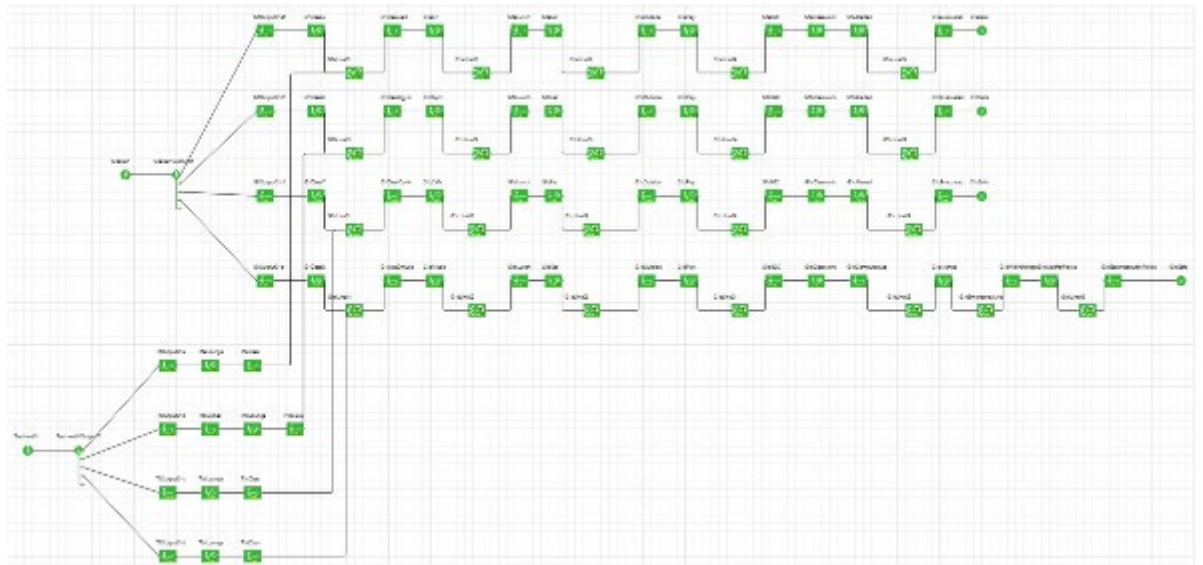
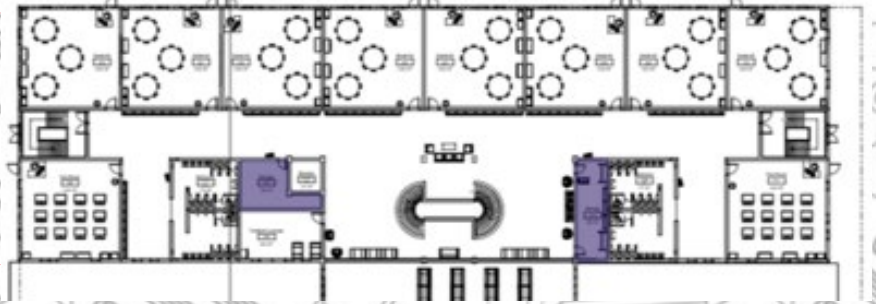
The storage and mechanical rooms are useful day to day, but can be used to hide, or keep students safe, in case of emergencies. The rooms are spread throughout the school, shown in blue, for easy access in case a class or a student can't reach an exit.

\*Floor plans are not to scale.

# Safety Rooms



Second Level



\*Floor plans are not to scale.



# The COMMONS

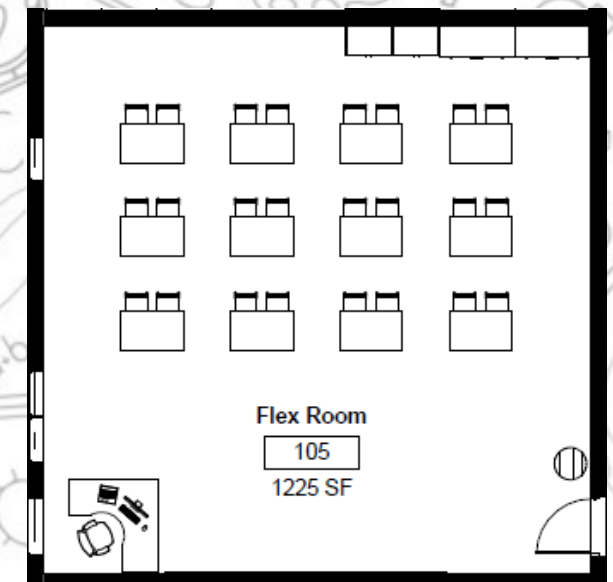
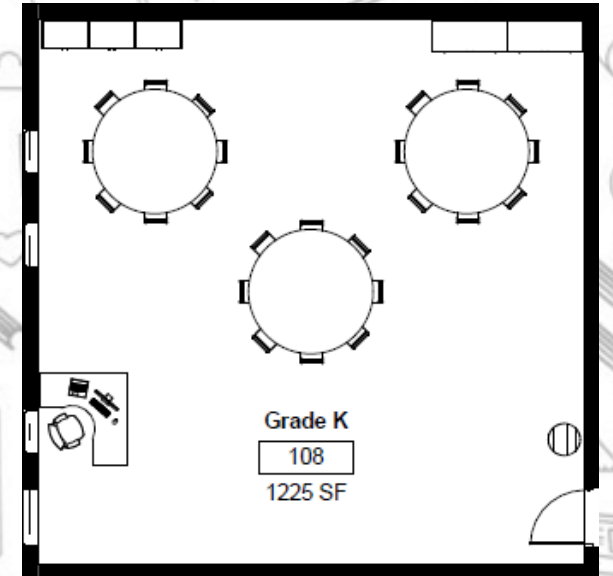


The Commons area in the center of the structure and starts after the entrance. It holds the cafeteria, and many options of different seating, or flex space.

# The Classrooms



Each grade has a total of 4 classes per grade, and they all have the open discussion (top right) layout to encourage team building and growth. However, there are classrooms on each level that have a different layout (bottom right) for activities or special occasions when different tables are needed.



# Other Rooms



Art Room



Music Room

- Other Room Examples:
- ILC
  - Computer Lab
  - Speech

# Other Rooms

Art Room



Music Room



Other Room Examples:  
ILC  
Computer Lab  
Speech

Similarly, to the Commons, the library has plenty of different seating, natural lighting and greenery to encourage students and staff to enjoy their time there.

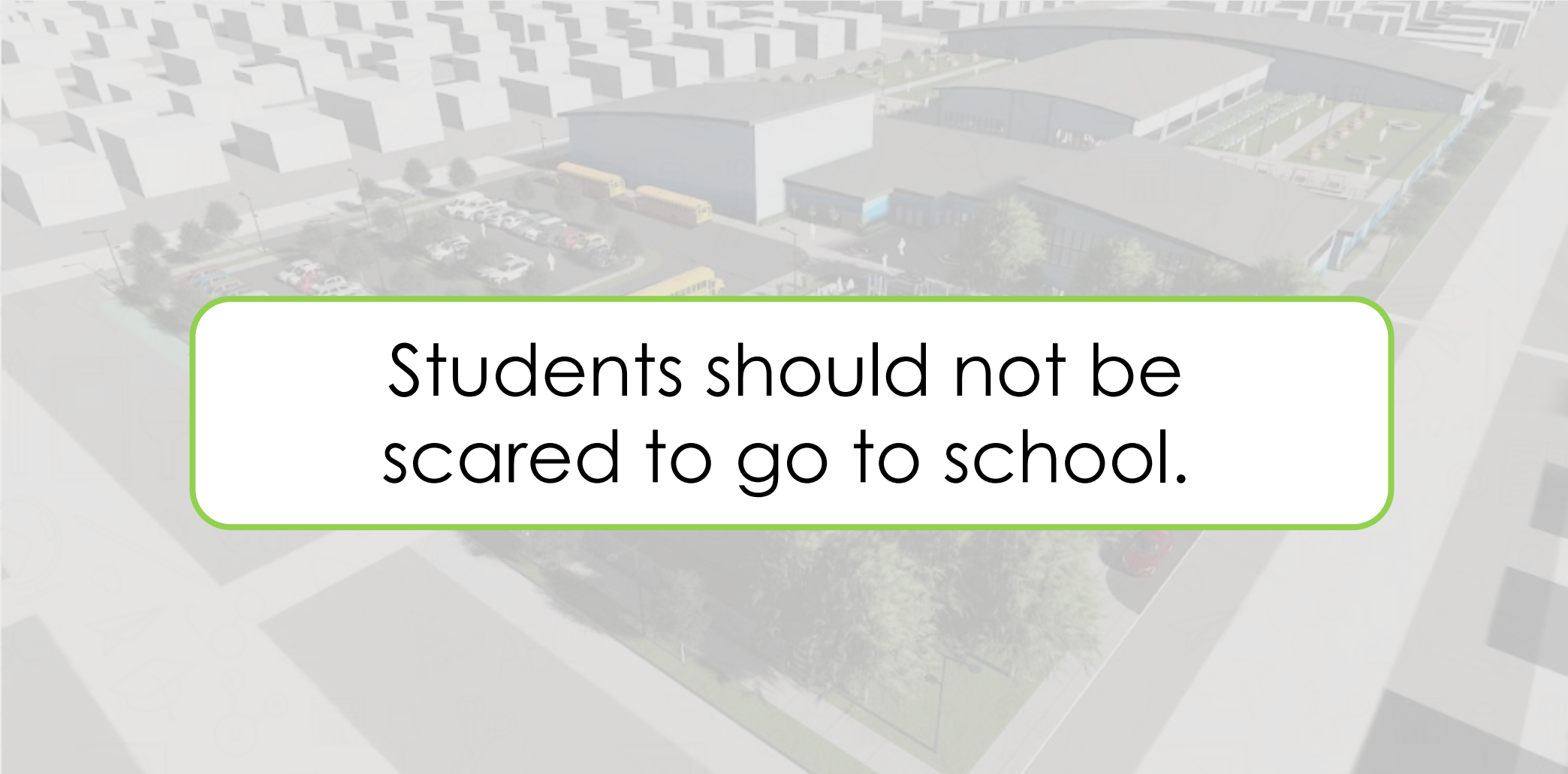


# Wrap Up



Children deserve to have the best possible future and by giving them a safe and steady environment can help.

# Wrap Up



Students should not be scared to go to school.

Children deserve to have the best possible future and by giving them a safe and steady environment can help.

---

Thank

---

You!

---

---