

CELEBRATING THE PAST,
WHILE CREATING THE PRESENT,
& IMAGINING THE FUTURE

THROUGH THE HAMLIN MIDWAY LIBRARY



SAINT PAUL
PUBLIC LIBRARY

Hamline - Midway

1558 W. MINNEHAHA AVE.

Historical Preservation



Types of Historical Preservation

- Preservation

Biltmore Estate



Types of Historical Preservation

- Preservation
- Rehabilitation

Military History Museum



Types of Historical Preservation

- Preservation
- Rehabilitation
- Restoration

The Robie House



Types of Historical Preservation

- Preservation
- Rehabilitation
- Restoration
- Reconstruction



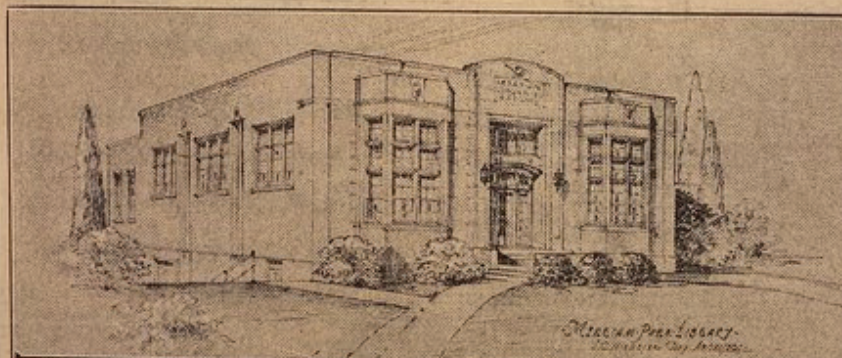
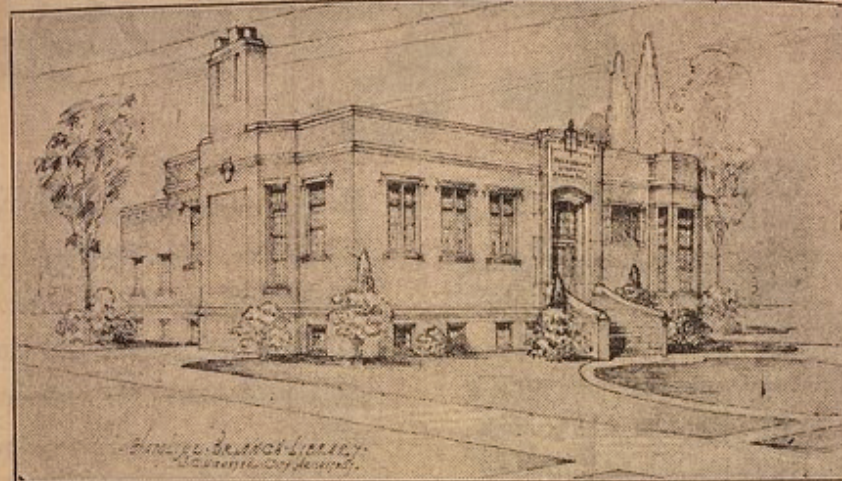
Dresden Frauenkirche

Can we adapt existing buildings while acknowledging their social purpose as the foundation of design and reassessing what is essential to the community instead of tearing down history only to rebuild?

Hamline Midway Library



TWO NEW ST. PAUL BRANCH LIBRARIES
ST. PAUL NEWS February 16, 1930.



Construction will be under way this spring of two branch libraries made possible by the Hale estate \$86,000 funds.

Plans and specifications for the two buildings, each to cost approximately \$43,000, have been completed by the city architect's department, according to Irving C. Pearce, commissioner of parks, playgrounds and public buildings.

The pictures show, at the top, the Hamline branch, to be erected on Minnehaha st. between Snelling and Asbury aves., and at the bottom the Merriam Park branch, to face Marshall ave. near Dewey ave.

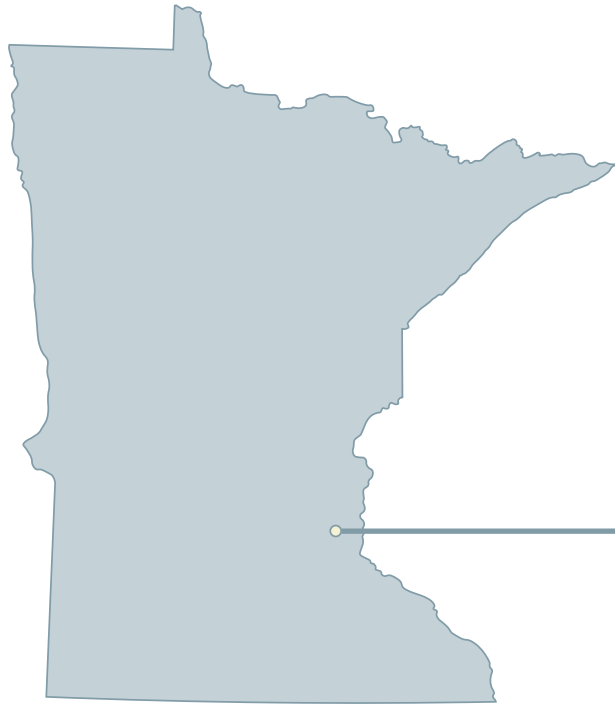




Children's Book Week Exhibit





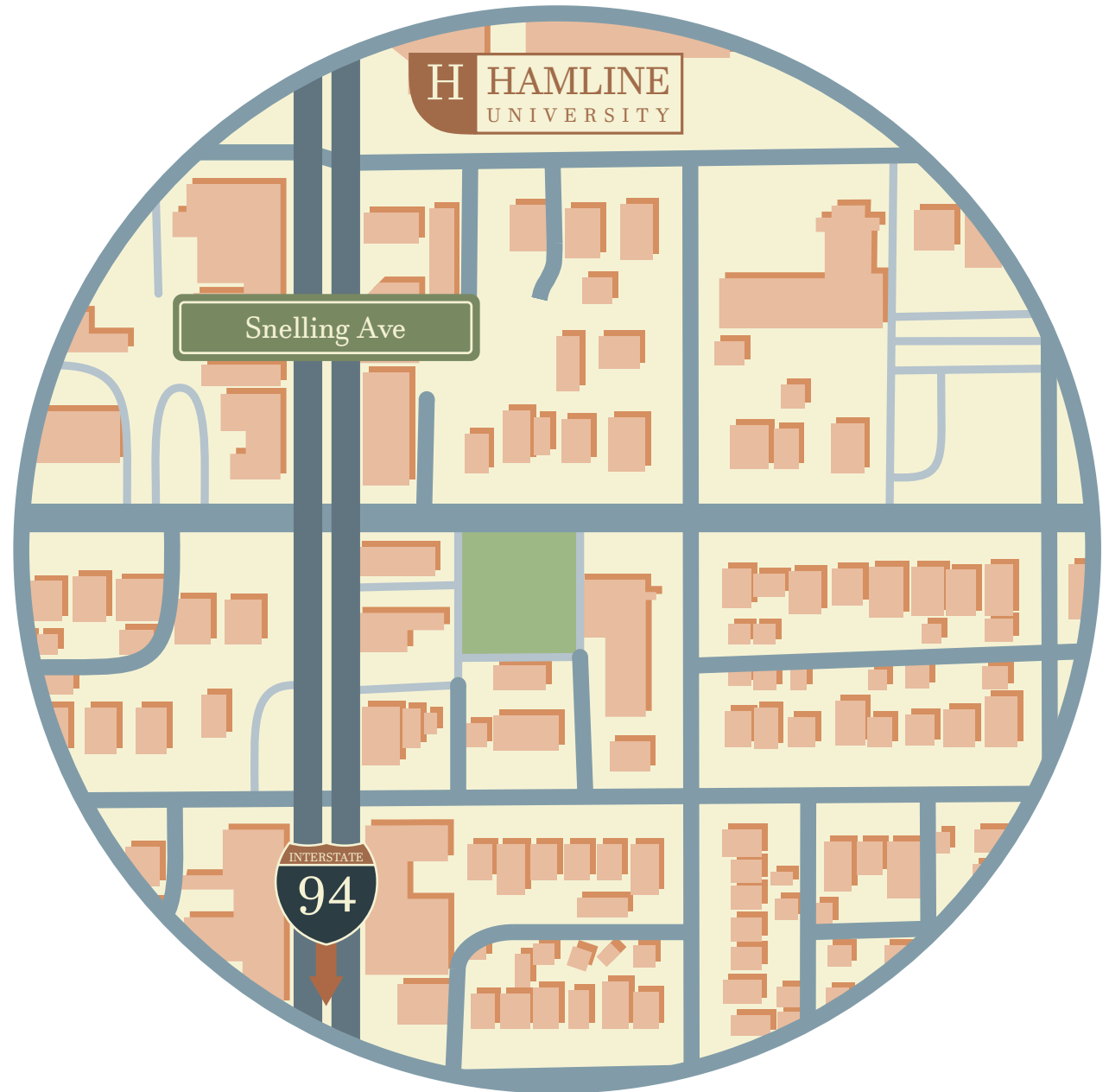


1558 W Minnehaha Ave,
St Paul, MN 55104

Location



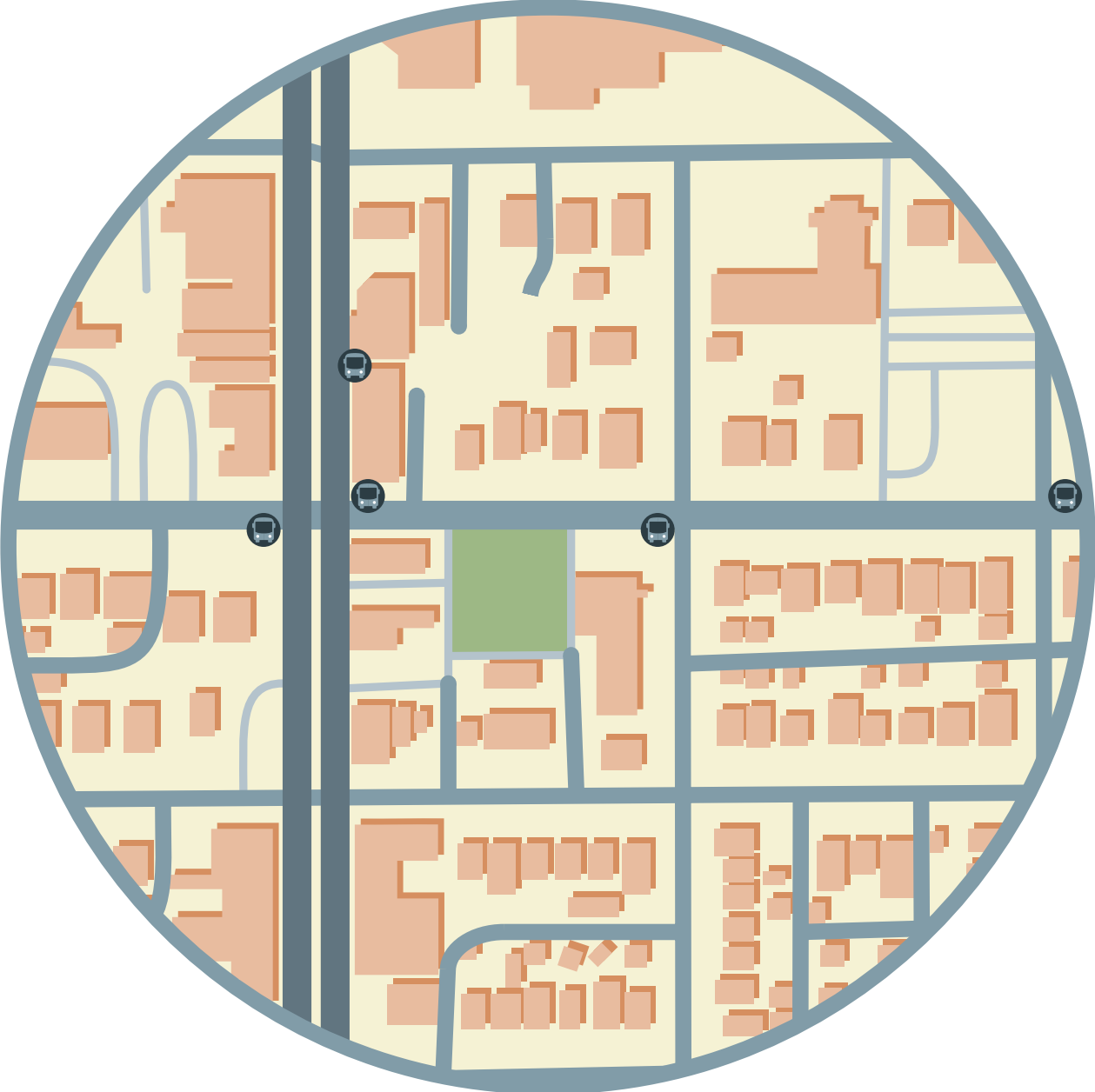
Cafes, Restaurants,
and Other Attractions
along Snelling Ave



Transportation



20 minute walk to the
Light Rail-Green Line

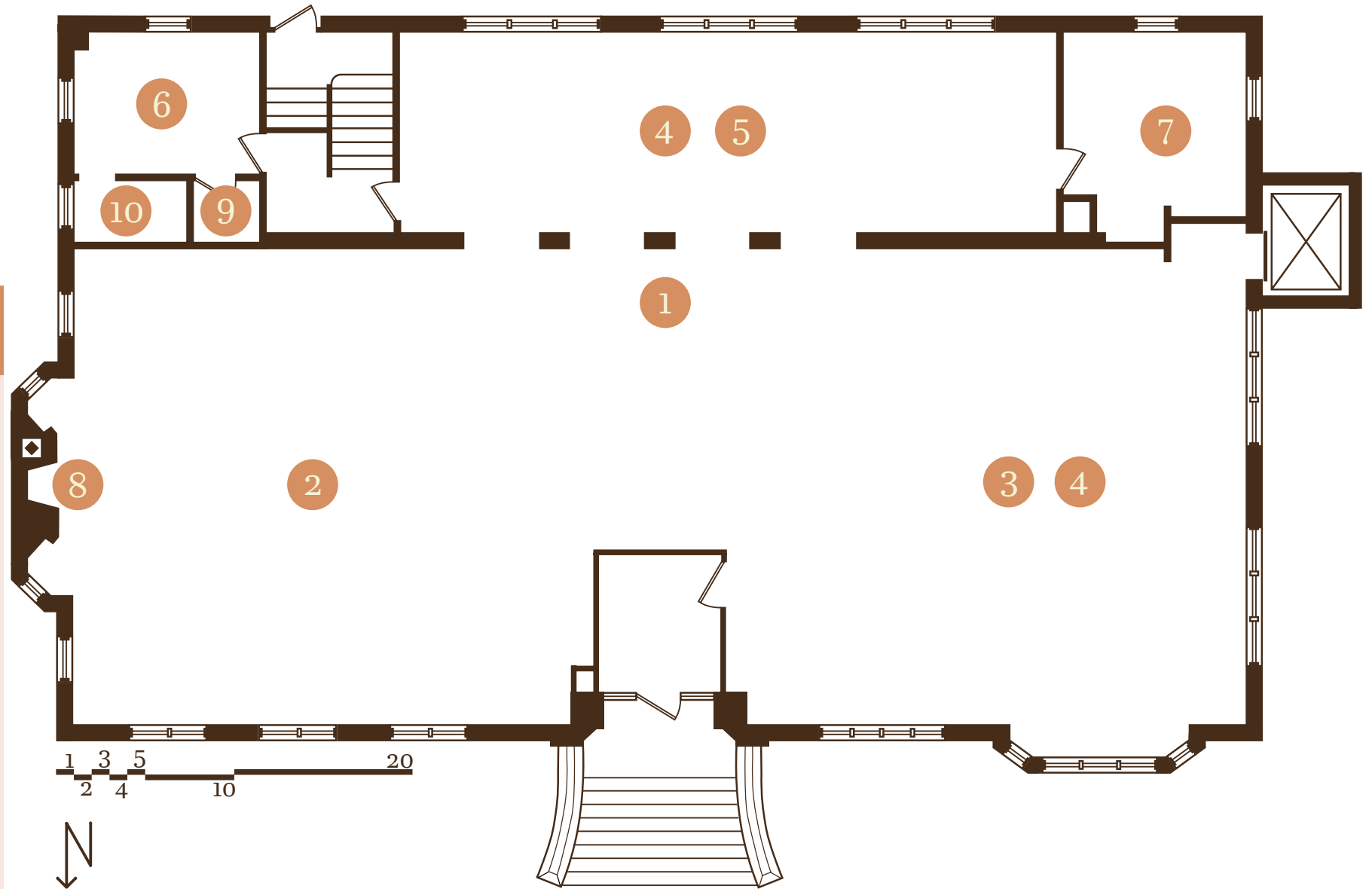




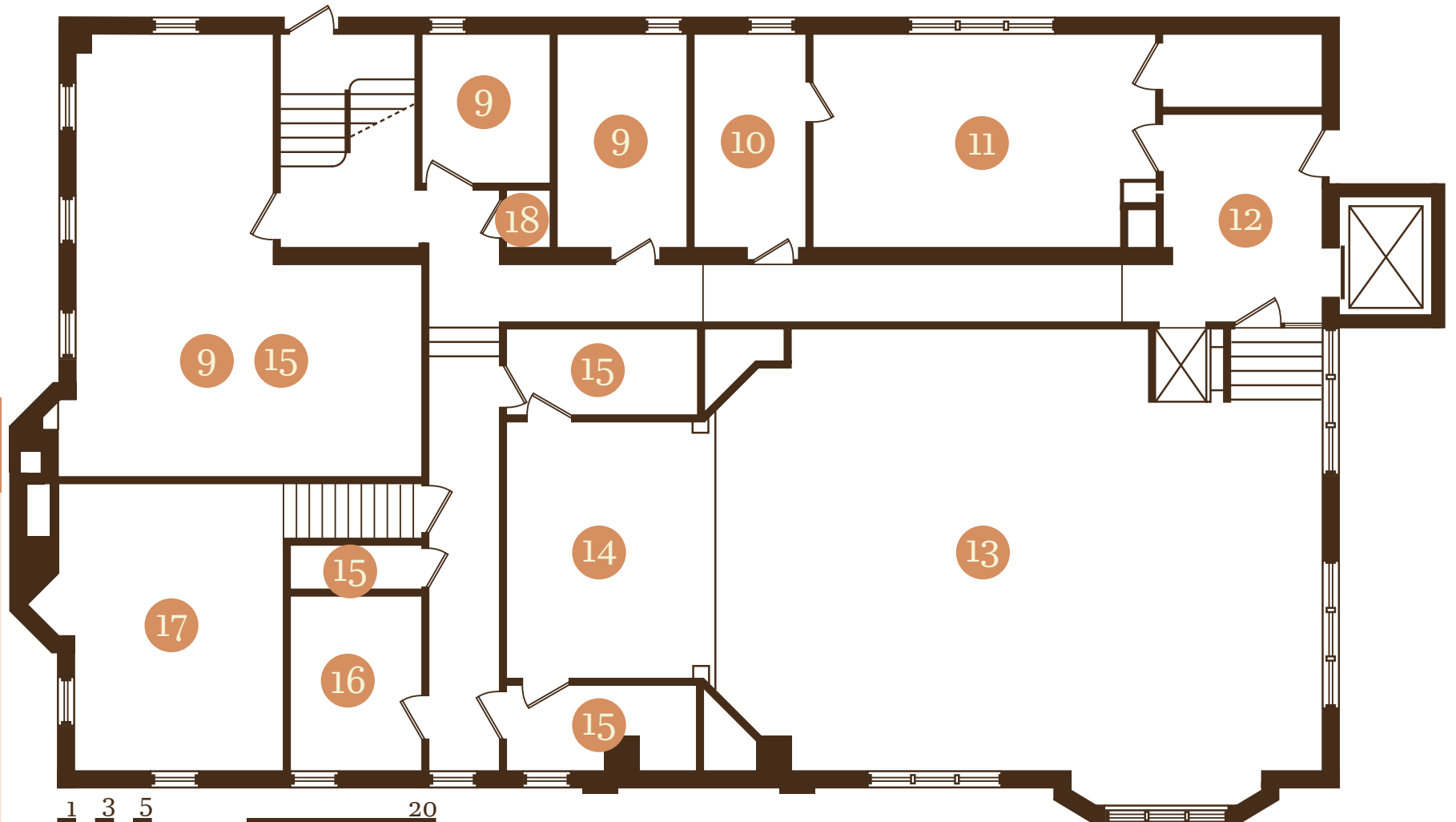
Upper Floor Plan

Legend

- 1 Front Desk
- 2 Kids
- 3 Computer Station
- 4 Collections
- 5 Study
- 6 Breakroom
- 7 Office
- 8 Fireplace
- 9 Restroom
- 10 Kitchenette



Lower Floor Plan



Legend

- 11 Meeting Room
- 12 Entry Hall
- 13 Auditorium
- 14 Stage
- 15 Storage
- 16 Maintenance Office
- 17 Boiler Room
- 18 Janitor Closet



Current Issues



Poor Layout



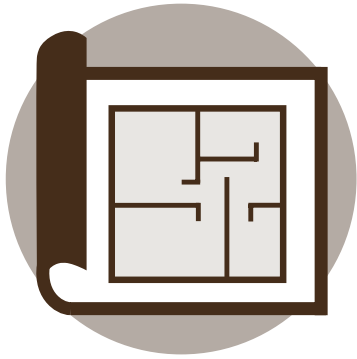
Underutilized Basement



Lacks Designated Space

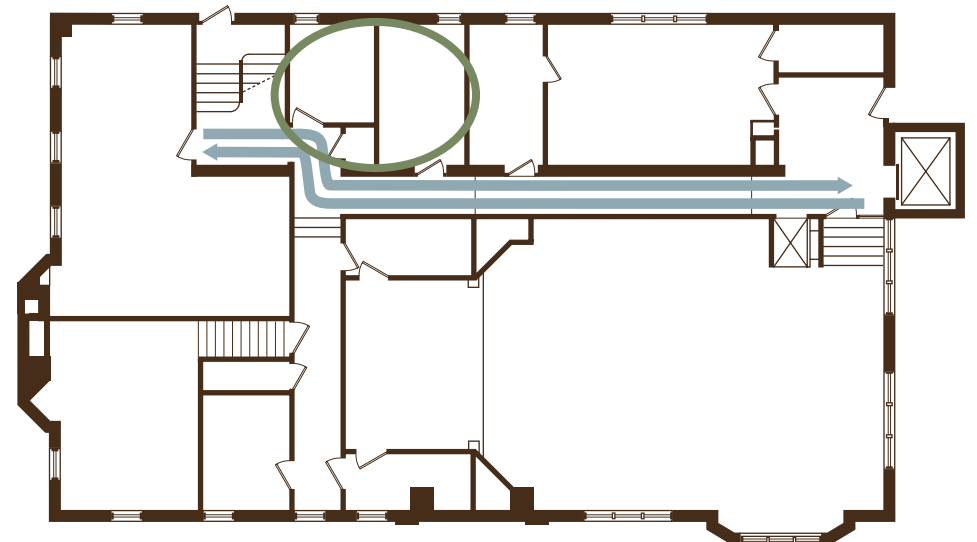
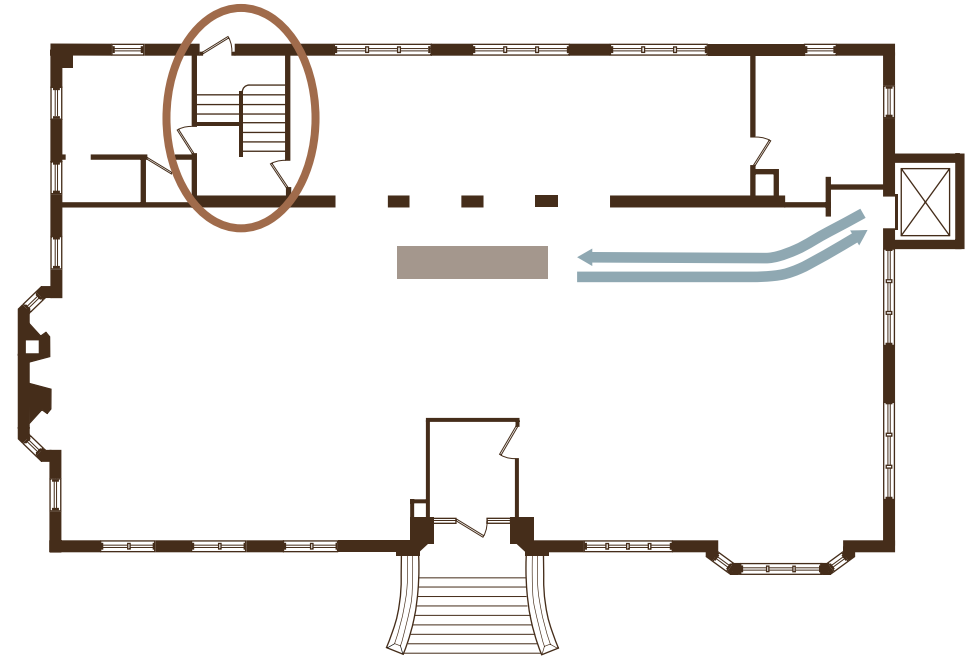


Accessibility



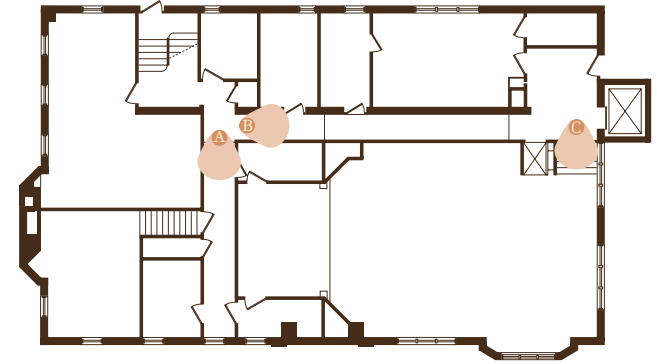
Poor Layout

- The front desk and the staff workroom is on the opposite side of the building
- One fire staircase hidden in through the backroom
- Bathrooms only on the lower level





Underutilized Basement





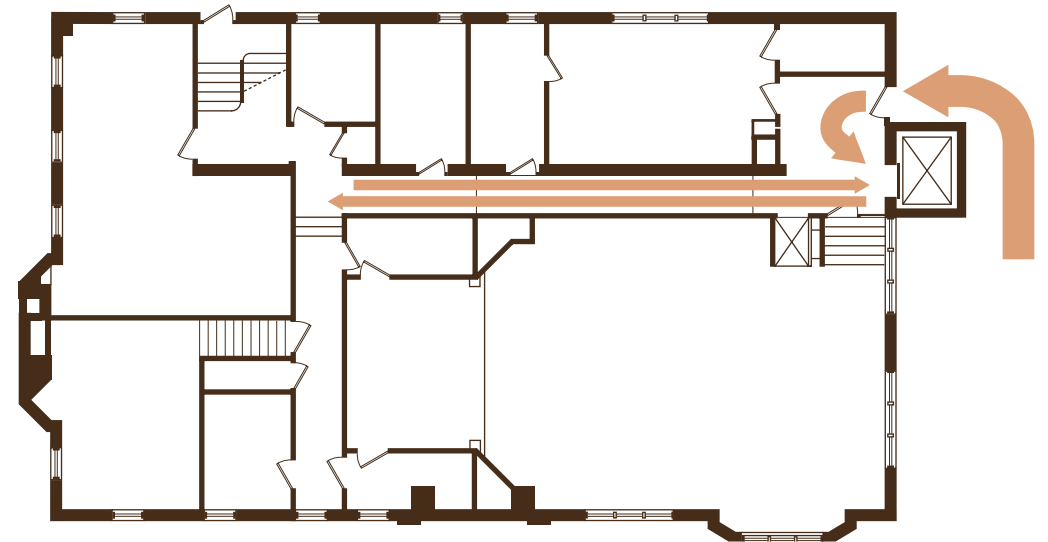
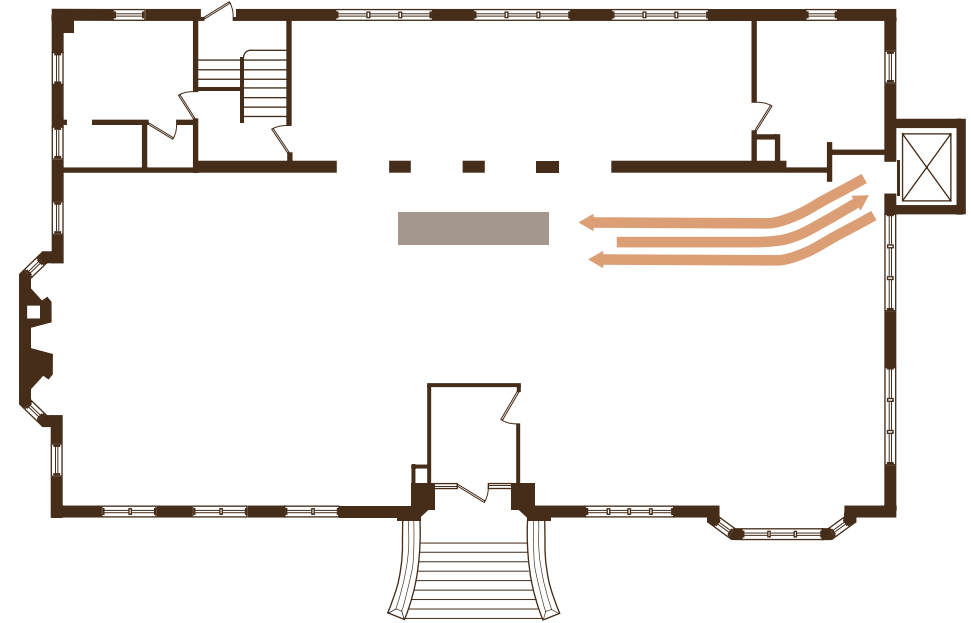
Lacks Designated Space



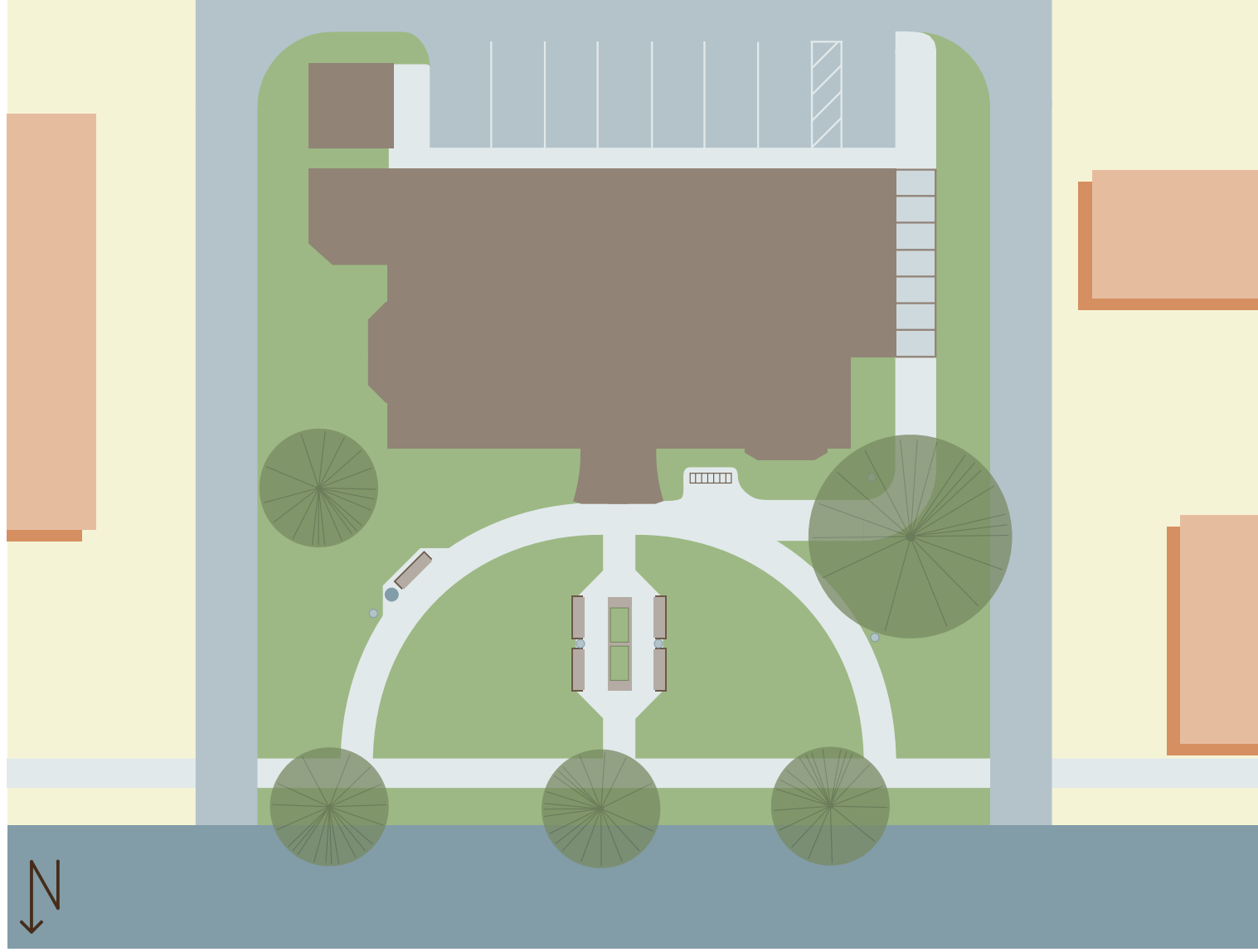


Accessibility

- Elevator access feels like a second thought and an inconvenience
- Security for getting to the entrance
- Bathroom access

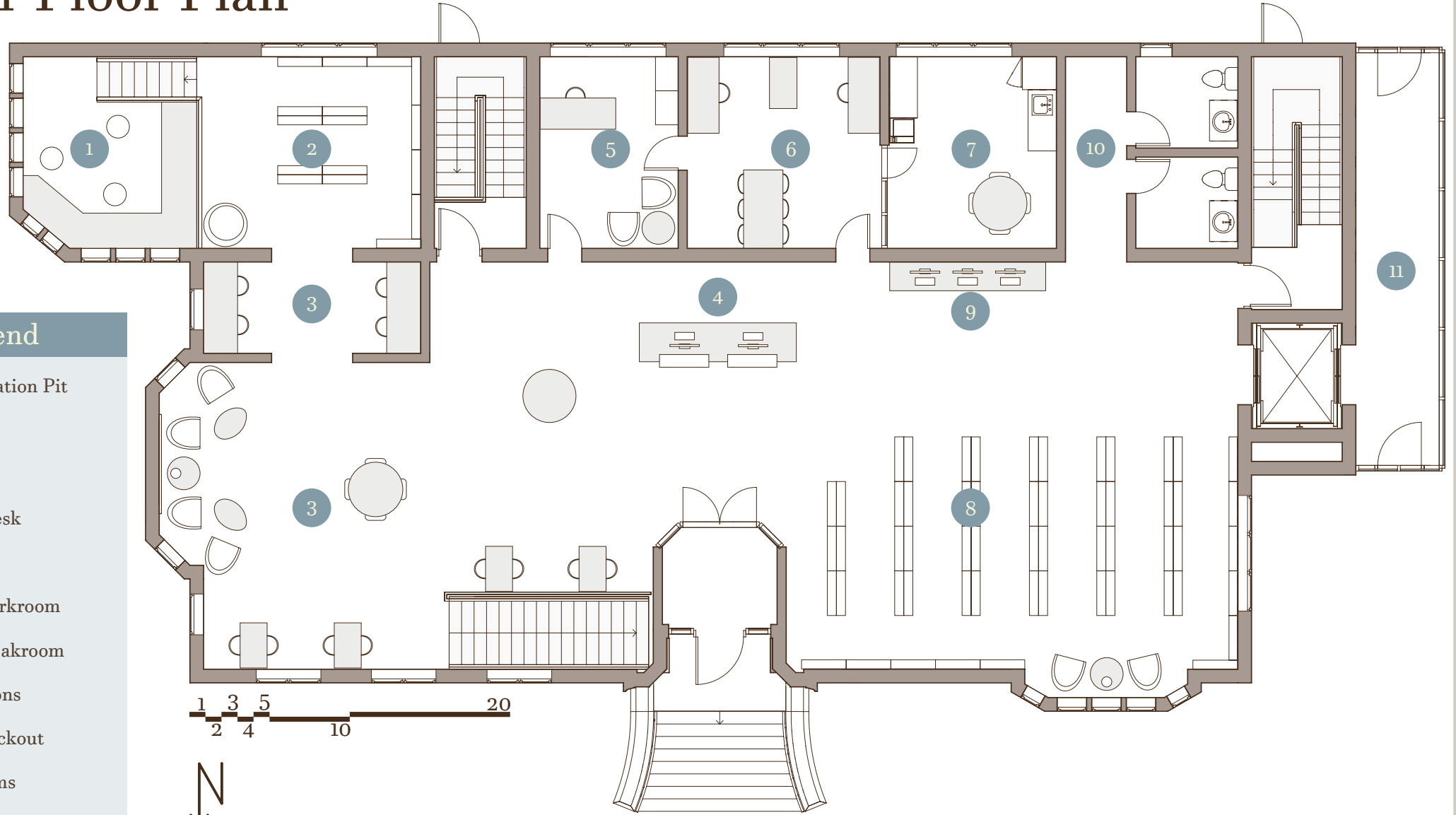


Proposed Design





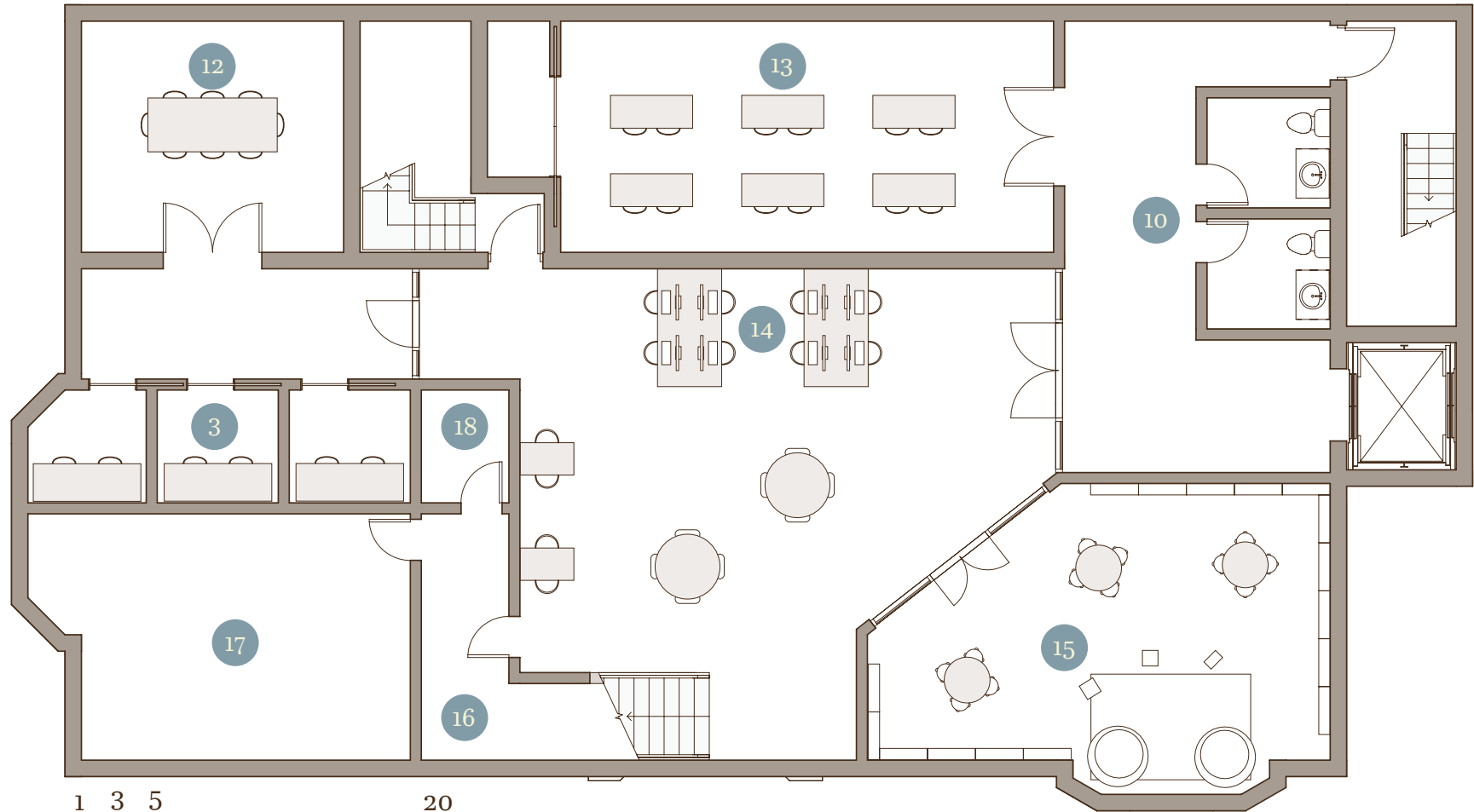
Upper Floor Plan



Legend

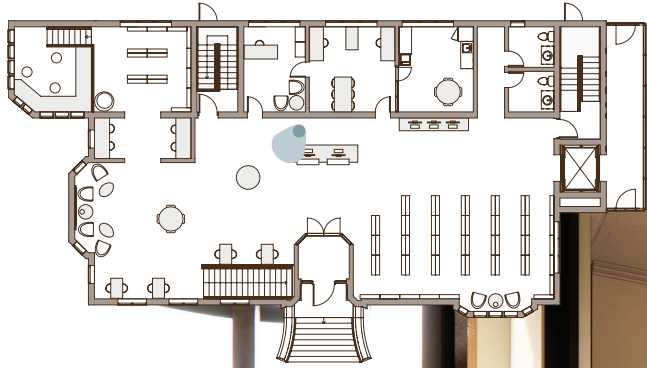
- 1 Conversation Pit
- 2 Teen
- 3 Study
- 4 Front Desk
- 5 Office
- 6 Staff Workroom
- 7 Staff Breakroom
- 8 Collections
- 9 Self Checkout
- 10 Restrooms
- 11 Elevator Vestibule

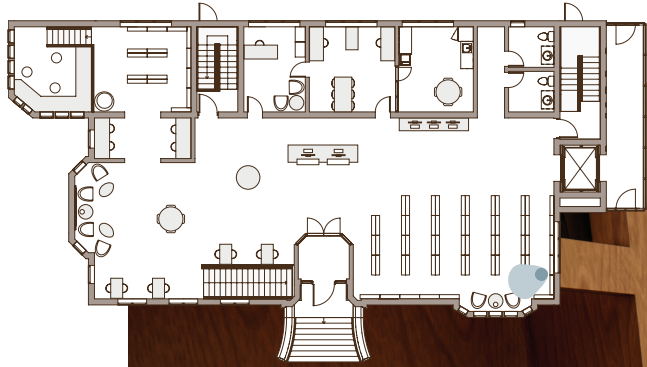
Lower Floor Plan

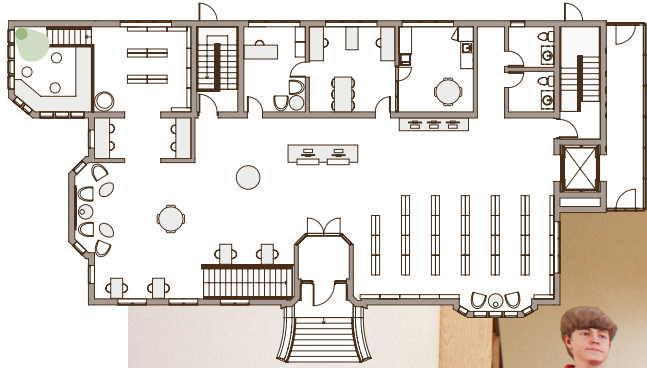


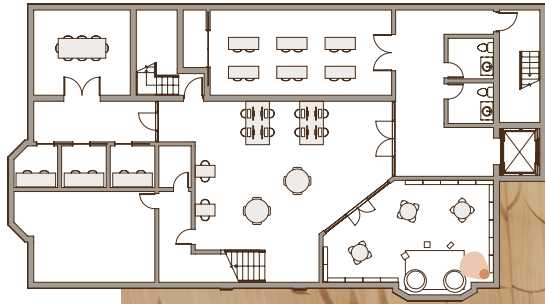
Legend

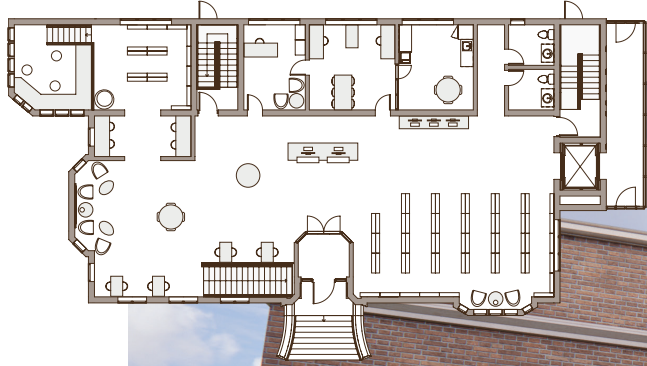
- 3 Study
- 10 Restrooms
- 12 Meeting Room
- 13 Community/Flex Space
- 14 Computer Stations
- 15 Children
- 16 Storage
- 17 Mechanical
- 18 Janitor Closet











“The greenest buildings are the ones that already exist,” wrote Carl Elefante, 2018 AIA President, and iconic places like the Hamline Midway Library possess both the infrastructure to support ongoing community needs and the historic and aesthetic values that enrich our neighborhood.

Renovate 1558 <https://www.renovate1558.org>

Thank You!