

HUDSON HEART

ANIMAL SHELTER & COMMUNITY CENTER

HUDSON HEART IS AN INTEGRATED ANIMAL SHELTER AND COMMUNITY CENTER LOCATED IN HUDSON, WI. HUDSON HEART IS DESIGNED TO SERVE THE POPULATION OF STRAY ANIMALS IN ST. CROIX COUNTY AND ITS SURROUNDING AREAS. THE SHELTER IS 38,000 S.F. AND EQUIPPED TO PROVIDE HOUSING FOR 50 DOGS AND 100 CATS WITH ADDITIONAL HEALTHY, ADAPTABLE SPACES TO ENSURE EACH ANIMAL IS OFFERED THE BEST QUALITY OF LIFE WHILE IN CARE.

THE OVERALL DESIGN OF THE SHELTER FOCUSES ON ANIMAL WELFARE BY PROVIDING THE BEST CARE FACILITIES. THE ANIMALS ARE GIVEN PROPER HOUSING ENVIRONMENTS THAT REDUCE STRESS AND BENEFIT EACH INDIVIDUAL ANIMAL'S WELFARE. THE BUILDING IS DESIGNED INTO DIFFERENT SECTORS TO PROVIDE THE PROPER NECESSITIES FOR STAFF AND ANIMALS. THE DOG AND CAT SECTORS ARE STRATEGICALLY CONFIGURED TO MEET THE NEEDS OF EACH ANIMAL. THE TWO SECTORS HAVE INDEPENDENT FACILITIES TO REDUCE LABOR FOR STAFF AND GIVE THE ANIMALS A LIVING ENVIRONMENT FOCUSED ON THEIR WELL-BEING. THE ANIMAL HOUSING WILL BE CONSTRUCTED OUT OF THE HIGHEST QUALITY MATERIALS TO REDUCE CLEANING TIME FOR STAFF WHILE ENSURING A SAFE, COMFORTABLE LIVING SPACE TO REDUCE STRESS AND DETERIORATION DURING THE ANIMAL'S TIME AT THE SHELTER. THE SHELTER HAS A STRATEGIC LAYOUT THAT PROVIDES EQUAL OPPORTUNITIES TO ALL ANIMALS SEEKING ADOPTION AND ENCOURAGES HUMAN-ANIMAL INTERACTION TO PREVENT FUTURE ANIMAL RELINQUISHMENT.

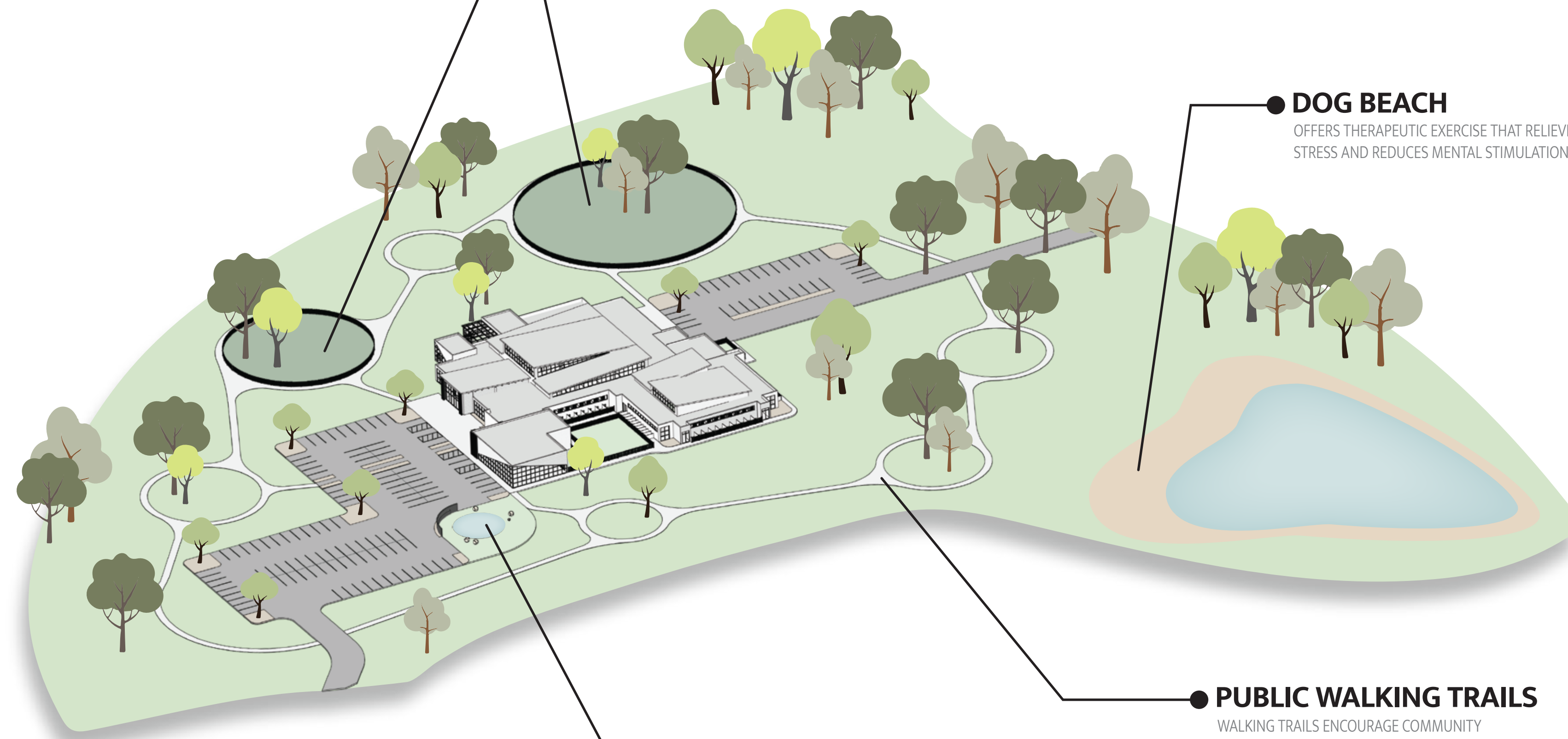
IN ADDITION TO THE STANDARD ANIMAL SHELTER FACILITIES, HUDSON HEART IS DESIGNED TO ENCOURAGE COMMUNITY INVOLVEMENT AS A WAY TO BRING AWARENESS TO THE SHELTER'S FUNDING AND VOLUNTEER EFFORTS. THE SITE UTILIZES WALKING PATHS AND OUTDOOR SPACES TO PROVIDE A SAFE SPACE FOR THE COMMUNITY TO BRING THEIR DOGS FOR PHYSICAL AND MENTAL STIMULATION. THE INSIDE OF THE SHELTER INCLUDES A COMMUNITY CENTER DESIGNED TO HOST ACTIVITIES THAT PROVIDE EDUCATIONAL OPPORTUNITIES AND ANIMAL ASSISTED THERAPEUTIC EVENTS. THE CAT CAFE IS ANOTHER OPEN RESOURCE FOR THE PUBLIC TO HAVE ACCESS TO THE THERAPEUTIC BENEFITS OF ENGAGING IN HUMAN-ANIMAL RELATIONSHIPS WHILE GIVING CATS THE ENJOYMENT OF HUMAN INTERACTION.

PUBLIC FENCED-IN DOG PARKS
PROVIDES A SAFE PUBLIC SPACE FOR DOGS IN THE LOCAL COMMUNITY TO SOCIALIZE AND ENCOURAGE DOG-LIKE BEHAVIOR

DOG BEACH
OFFERS THERAPEUTIC EXERCISE THAT RELIEVES STRESS AND REDUCES MENTAL STIMULATION

PUBLIC WALKING TRAILS
WALKING TRAILS ENCOURAGE COMMUNITY INTERACTIONS ON SITE WHILE PROVIDING PHYSICAL EXERCISE FOR HUMANS AND ANIMALS

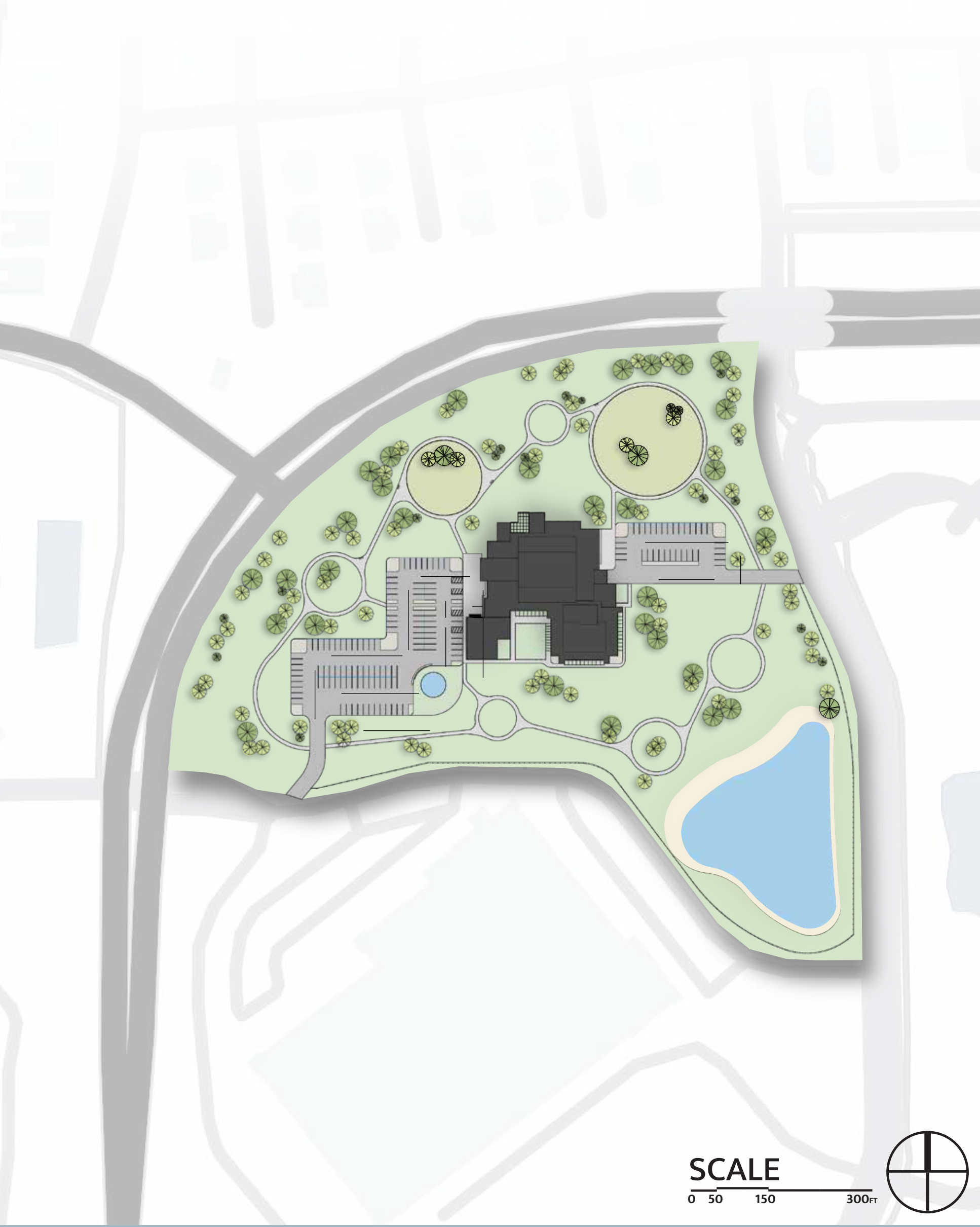
PUBLIC DOG PUDDLE
INTERACTIVE FOUNTAINS AND PLAY AREA TO PROVIDE ENTERTAINMENT AND ENCOURAGE MENTAL STIMULATION



KEY

- | | | | | |
|------------------|--------------------|--------------------|----------------------|-------------------------|
| A LOBBY | G DOG QUARANTINE | M LAUNDRY | S TRAINING ROOM | Y CAT HOUSING |
| B ADMIN | H RESTROOM | N ADOPTION ROOM | T PUPPY ROOM | Z LONG TERM CAT HOUSING |
| C CLINIC | I VOLUNTEER LOUNGE | O STIMULATION ROOM | U DOG INTAKE ROOM | AA COMMUNITY CENTER |
| D OFFICE | J STAFF LOUNGE | P GROOMING | V VISUALIZATION ROOM | AB BREAKOUT ROOM |
| E STORAGE | K MECHANICAL | Q REAL LIFE ROOM | W CAT INTAKE ROOM | AC CAT CAFE |
| F CAT QUARANTINE | L KITCHEN | R DOG RUN | X KITTEN ROOM | AD CAT GREEN SPACE |

SCALE
0 3 9 18'



SCALE
0 50 100'





CAT CAFE

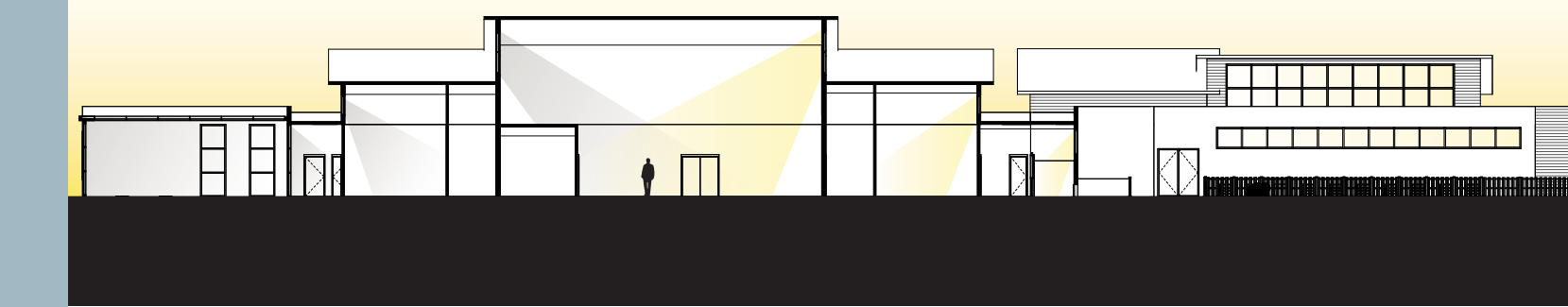


CAT GREEN SPACE



DAYLIGHT

NATURAL LIGHT IS ONE OF THE MOST INFLUENTIAL FACTORS IN MENTAL HEALTH. HUDSON HEART WAS DESIGNED TO HAVE OPEN CLERESTORY WINDOWS TO PROVIDE NATURAL LIGHT TO ALL MAJOR SECTORS LOCATED IN THE CORE OF THE BUILDING TO IMPROVE VITALITY, ATTENTION, INCREASE PHYSIOLOGICAL ALERTNESS, PERFORMANCE ON COGNITIVE TASKS, AND REDUCE SLEEPINESS IN HUMANS AND ANIMALS.




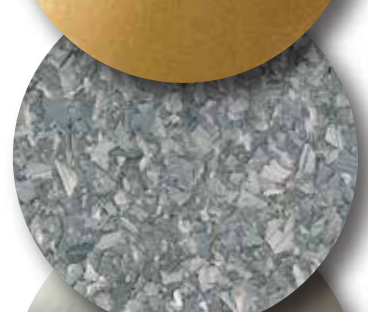
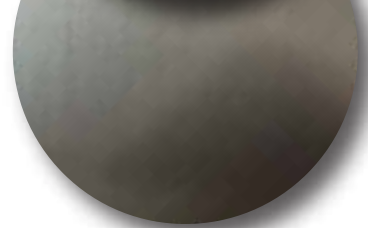


MATERIALS

PROPER SANITATION IN ANIMAL SHELTERS IS KEY TO PROVIDING A HEALTHY LIVING ENVIRONMENT FOR THE ANIMALS. MATERIALS WITHIN HUDSON HEART ARE SELECTED TO PROVIDE EASE OF CLEANING FOR STAFF, ARE SAFE FOR ANIMAL USE, AND ARE DURABLE AGAINST HARSH CLEANING PRODUCTS. THE FACILITY USES MATERIALS THAT ENCOURAGE A SAFE LIVING SPACE FOR THE ANIMALS AND PROVIDE A COMFORTABLE WORKING ENVIRONMENT FOR THE STAFF.



AIR DRAIN ARTIFICIAL DOG TURF

-  PORCELAIN TILE
-  PVC WALL PANELING
-  FIBERGLASS REINFORCED PLASTIC
-  POWDER COATED STEEL
-  SEAMLESS EPOXY FLOORING
-  ALUMINUM



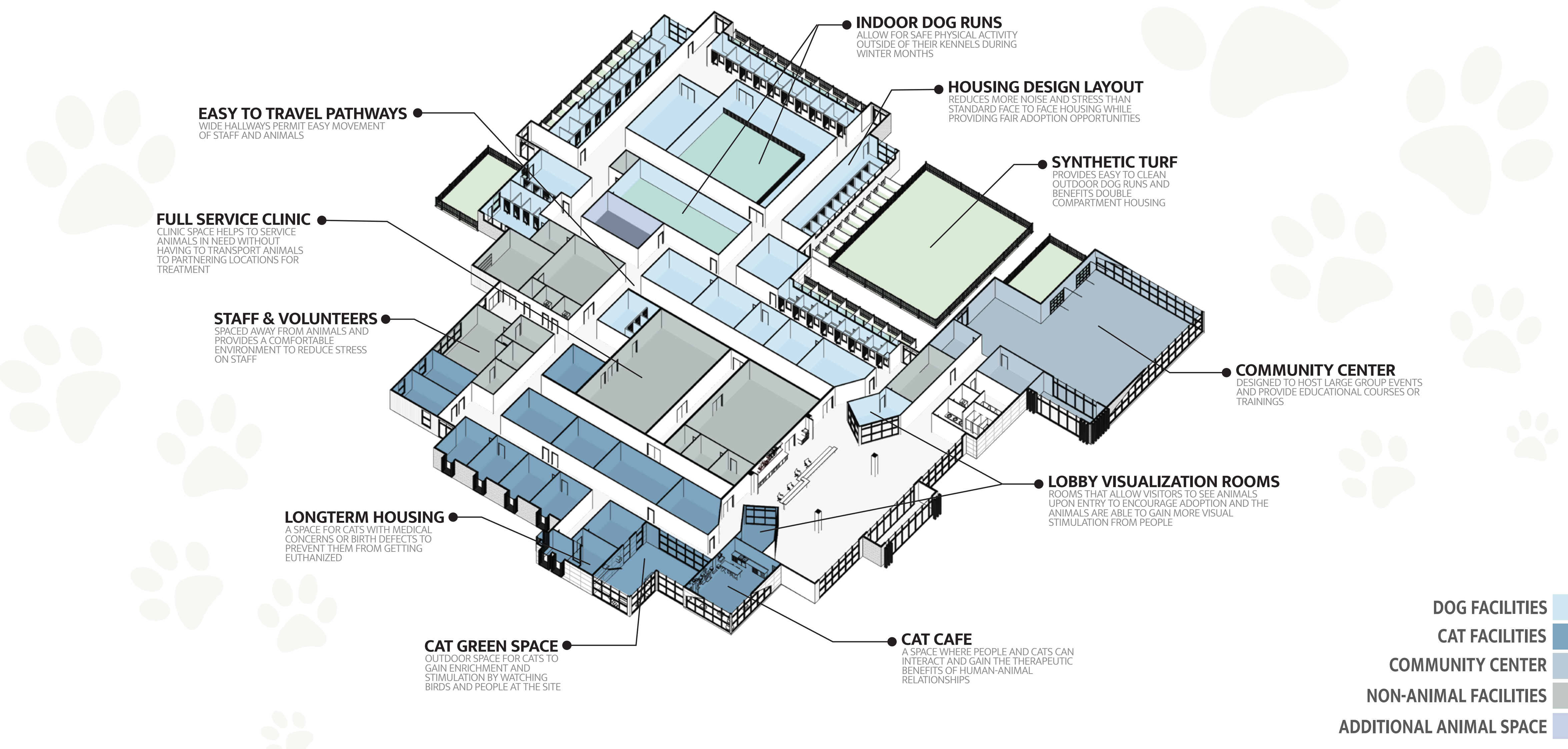
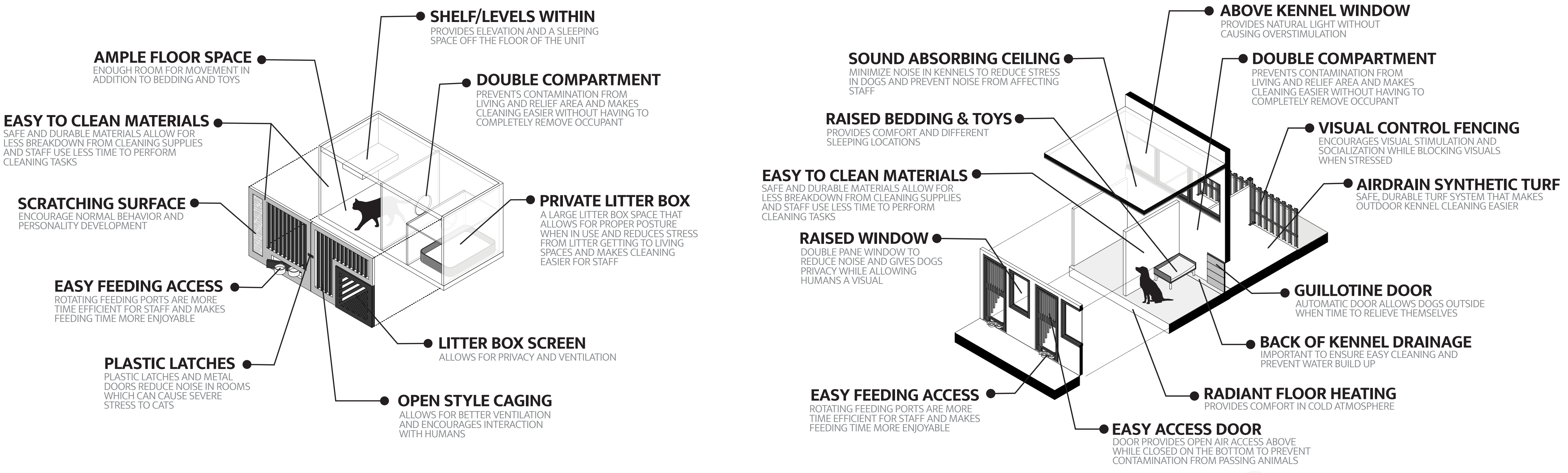
DOG PARK








DOG KENNEL



DOG PUDDLE



-  DOG FACILITIES
-  CAT FACILITIES
-  COMMUNITY CENTER
-  NON-ANIMAL FACILITIES
-  ADDITIONAL ANIMAL SPACE

