
HABITAT UKRAINE

A MODULAR, MASS TIMBER HOUSING APPROACH TO HELP REBUILD UKRAINE

FEAR

DESTRUCTION

SUFFERING

CONFLICT AND DEVASTATION



[HTTPS://ABCNEWS.GO.COM/INTERNATIONAL/IMAGES-SHOW-DESTRUCTION-LEFT-UKRAINE-TOWN-BORODYAN-
KA-RUSSIAN-STORY?ID=83910345](https://abcnews.go.com/international/images-show-destruction-left-ukraine-town-borodyan-ka-russian-story?id=83910345)



[HTTPS://WWW.CNN.COM/EUROPE/LIVE-NEWS/RUSSIA-UKRAINE-WAR-NEWS-06-03-22/H.5329AB94B9238B
C07749AF79B0785894](https://www.cnn.com/europe/live-news/russia-ukraine-war-news-06-03-22/h.5329ab94b9238b07749af79b0785894)



[HTTPS://NEWLINESINSTITUTE.ORG/RULES-BASED-INTERNATIONAL-ORDER/RUSSIAS-CAMPAIGN-OF-URBICIDE-I
N-UKRAINE/](https://newlinesinstitute.org/rules-based-international-order/russias-campaign-of-urbicide-in-ukraine/)

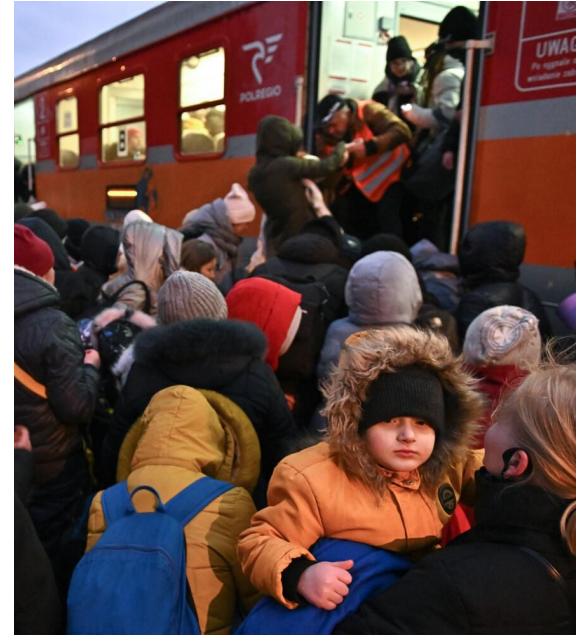
MIGRATION: SUDDEN UPROOTING



[HTTPS://WWW.CNBC.COM/2022/03/07/GOOGLE-WILL-USE-OFFICE-SPACE-IN-POLAND-TO-SUPPORT-UKRAINIAN-REFUGEES.HTML](https://www.cnbc.com/2022/03/07/google-will-use-office-space-in-poland-to-support-ukrainian-refugees.html)

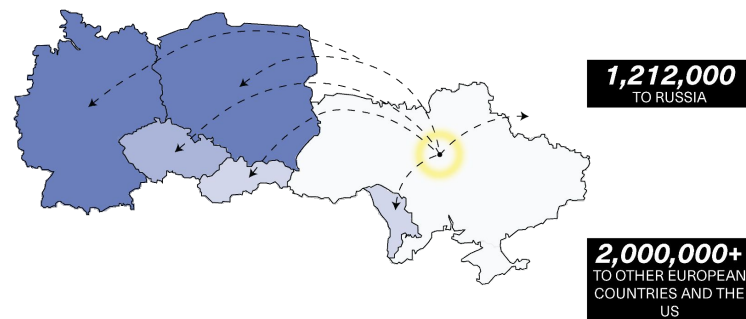
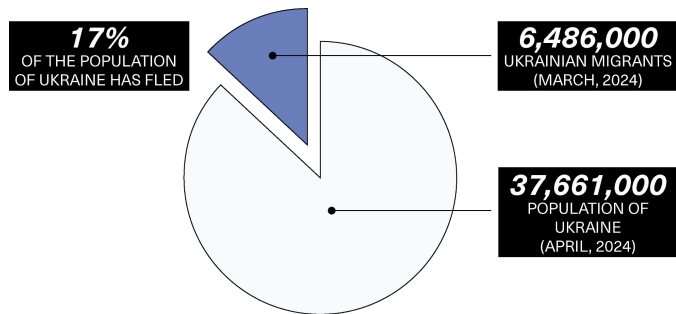


[HTTPS://WWW.NPR.ORG/2022/04/20/1093760280/UKRAINE-REFUGEES-5-MILLION](https://www.npr.org/2022/04/20/1093760280/ukraine-refugees-5-million)



[HTTPS://WWW.LATIMES.COM/OPINION/STORY/2022-03-20/UKRAINE-REFUGEES-MEXICO-IMMIGRANTS-BORDER](https://www.latimes.com/opinion/story/2022-03-20/ukraine-refugees-mexico-immigrants-border)

MIGRATION: THE NUMBERS



HOW CAN WE REHOUSE THESE VICTIMS?

MODULAR

AFFORDABILITY

COMMUNITY-BASED

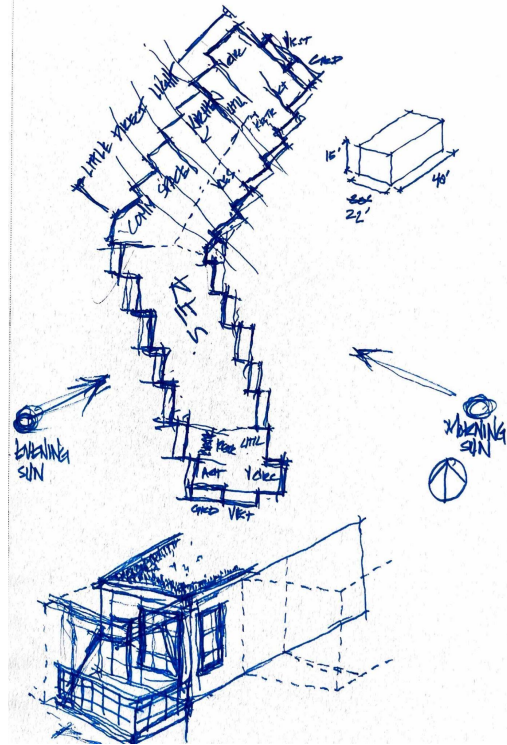
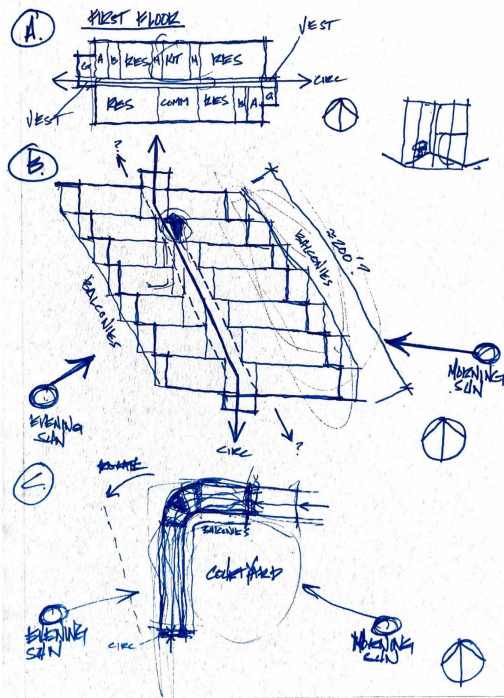
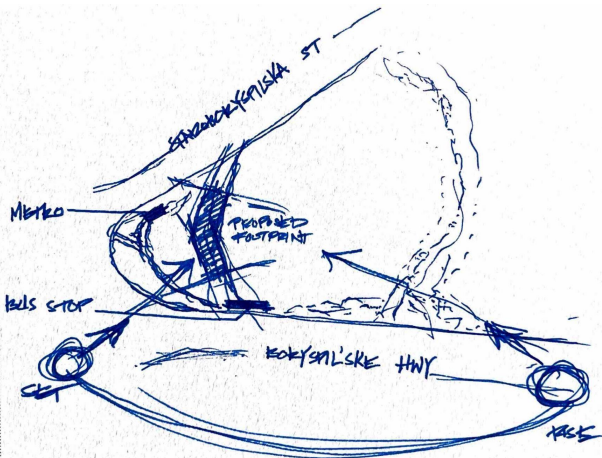
EFFICIENT USE OF RESOURCES

HEALING

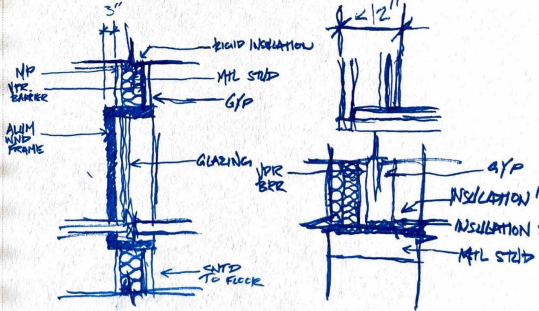
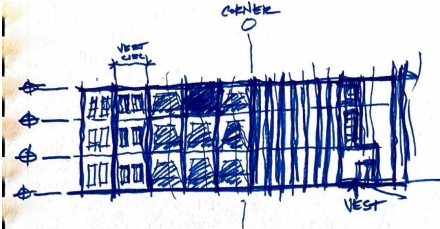
QUALITY LIVING



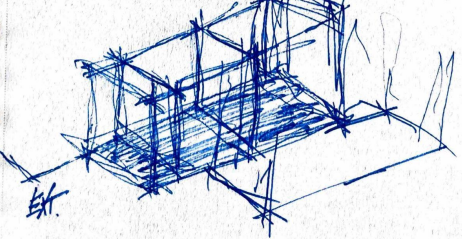
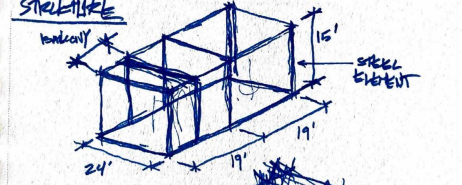
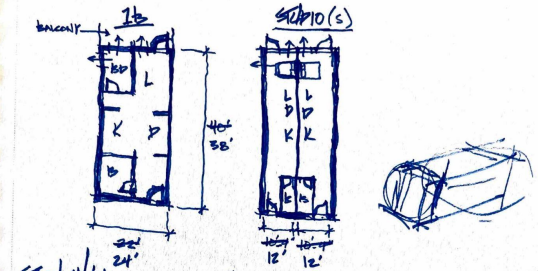
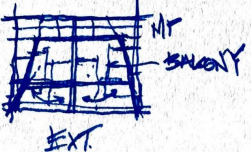
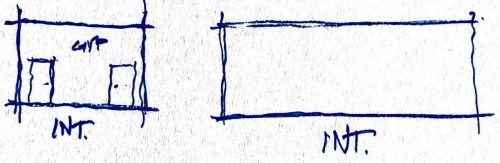
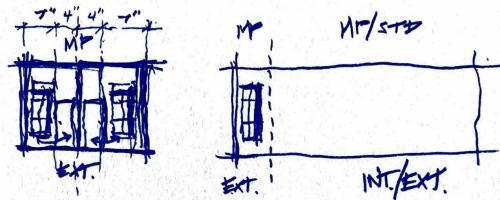
ORIGIN AND PROCESS



ORIGIN AND PROCESS



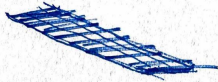
THE MODULE



ORIGIN AND PROCESS

CONSTRUCTION PROCESS

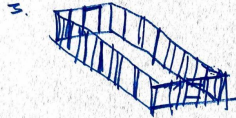
1. FLOOR FRAMING



2. FLOOR SHEATHING



3. WALL STUDS



4. DR/WALL (INT.)



5. INSULATION



6. WALL SHEATHING



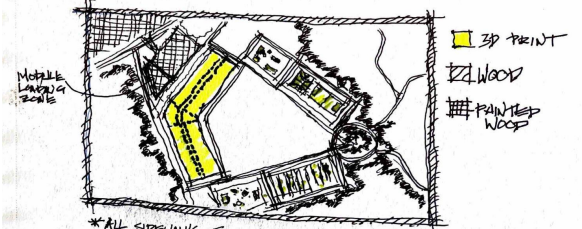
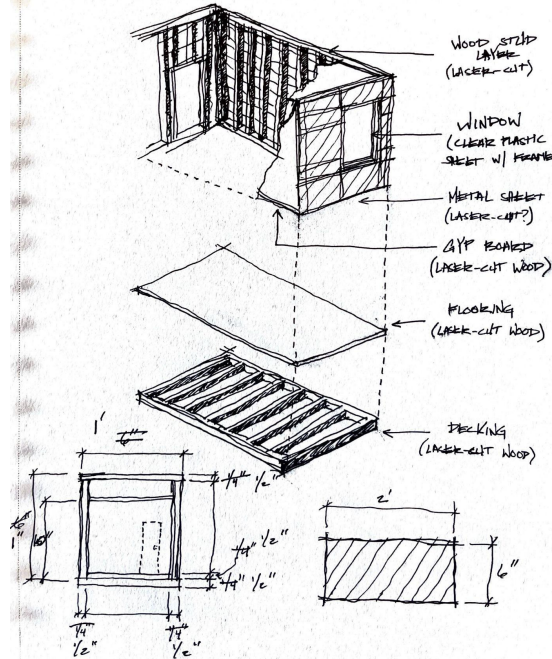
7. AIR BARRIER



8. RAIN SCREEN FRAMING (EXT.)



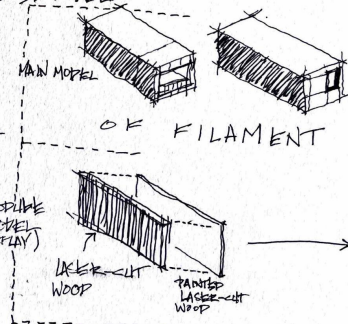
THE MODEL



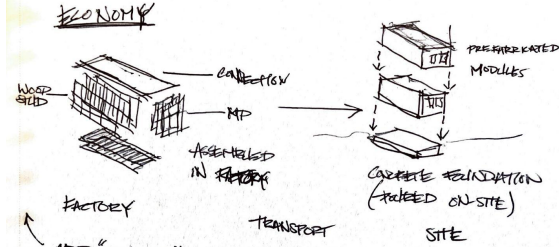
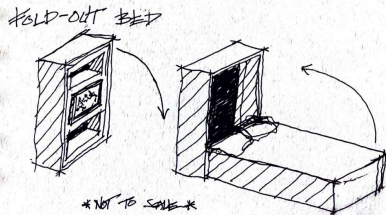
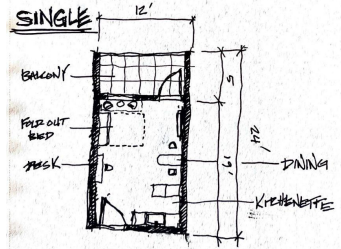
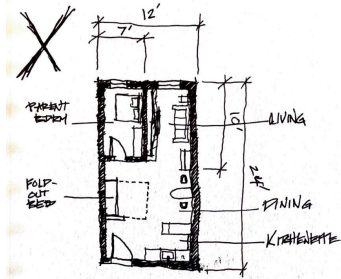
- * ALL SIDING IS TO TOP OF CONCRETE
- * FLOOR FOUNDATION TO TOP OF CONCRETE
- * ALL OTHER INTERMEDIATE SPACE TO TOP OF WOOD PAINTED GREEN WITH STATIC GRASS FINISH
- * ALL TREES TO BE 3D MODELS

MATERIALS NEEDED:

- WOOD
- CRACK-FORG CONCRETE
- GREEN PAINT
- GYPSUM
- STATIC GRASS
- MODEL TREES
- FILAMENT
- * METAL SHEET?



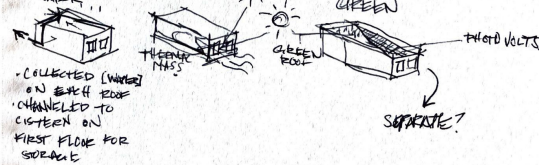
ORIGIN AND PROCESS



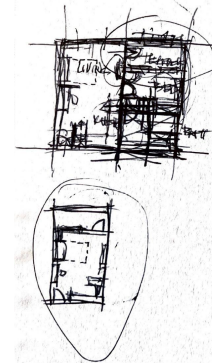
FACTORY
 ADD "SOULS"
 (RECYCLED MATERIALS)
 (REBBIK/PAPERIS FROM LIKFRAME?)

SUSTAINABLE STRATEGIES

- RAINWATER COLLECTION/SNOW
- NATURAL HEATING/VENT
- PASSIVE POWER GEN. (SOLAR PANELS)
- GREEN DESIGN

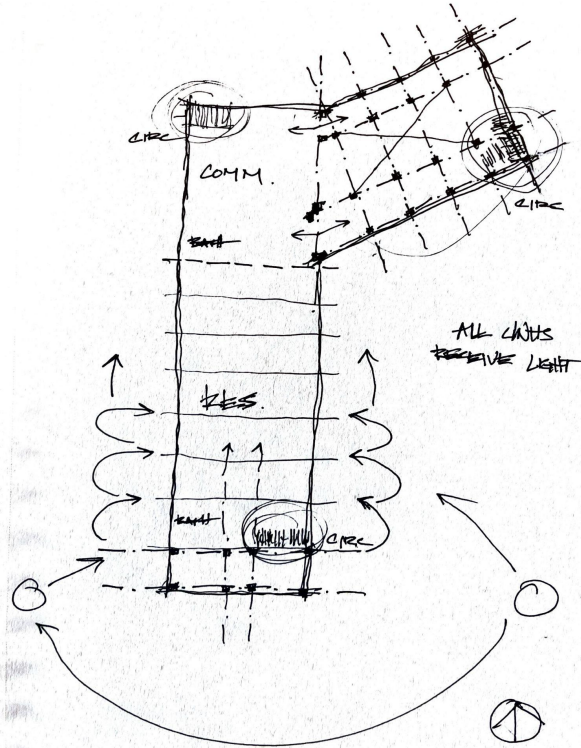
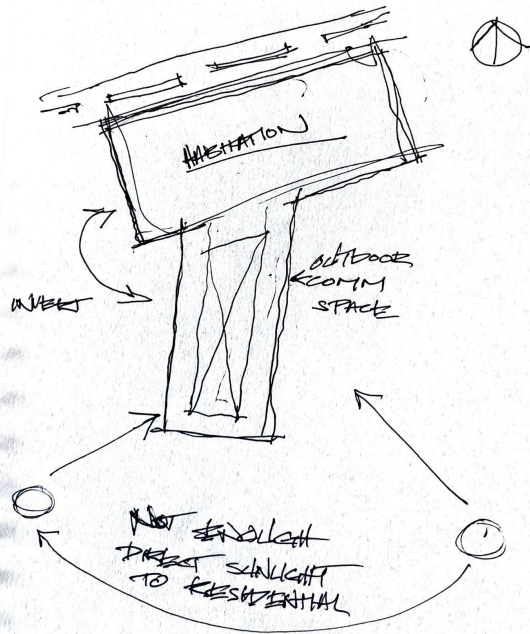


REIDENTIFICATION OF FAMILIES VS. SINGLES

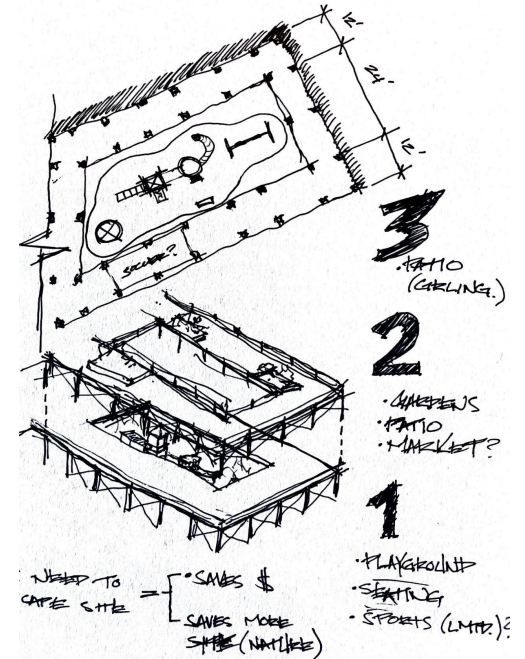


- ENCLOSED BALCONIES
- NO TERRACES NEUTRALLY
- ARCHES
- GYM (ADD WOOD?)
- ENTRY FOR SNOW/MILD w/ STORAGE CLOSET (FAMILIES)
- ADD OVER/SLOVE

TURNING POINT



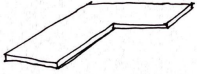
PEN-AIR COMM SPACE



TURNING POINT

Process - BUILDING

1. CONCRETE FOUNDATION



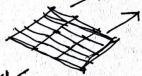
GULLIAMS

2. MASS TIMBER STRUCTURE

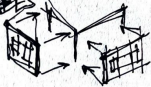


WHERE CROSS BRACING

3. CLT FLOORING



4. PANELS



5. ROOFING



6. SYSTEMS / UTILITIES



7. VEGETATION



WHY CHANGE? (FROM FORMER DESIGN)

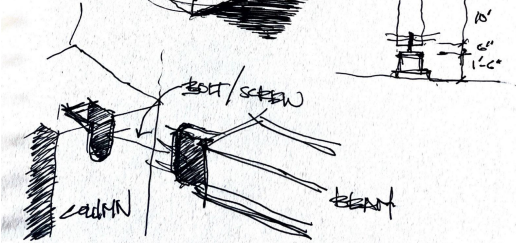
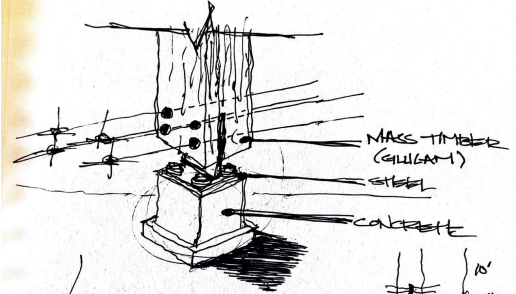
MASS TIMBER

- MAKES BUILDING LIGHTER
- AIDS IN RESILIENT HEALING PROCESS
- STILL BOASTS FASTER CONSTRUCTION TIME THAN TRADITIONAL METHODS
- AIDS MORE CHARACTER TO BUILDING

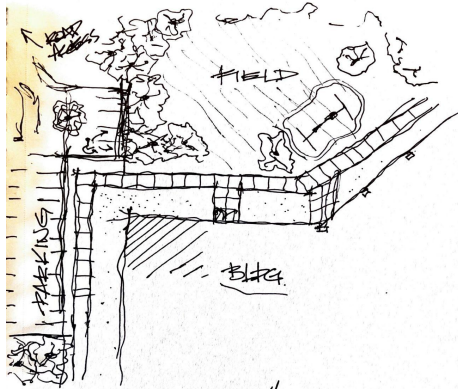
SITE

- LESS INTERFERENCE WITH SITE
- MORE ADAPTABLE TO SMALLER, MORE CHALLENGING SITES

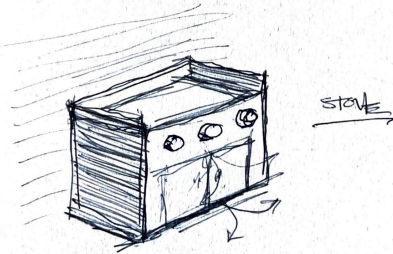
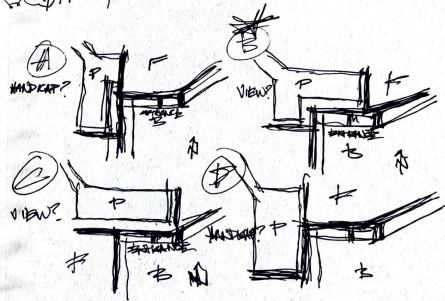
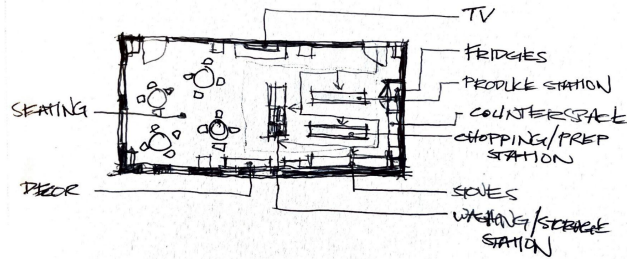
STRUCTURE



TURNING POINT

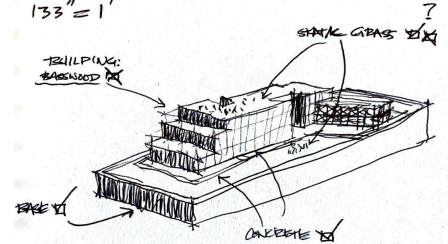


COMMUNITY KITCHEN



MODELING MATERIAL LIST

SCALE MODEL
 1/8" = 1'
 1/4" = 1'
 1/32" = 1'



MATERIALS: (STILL NEEDED)

- BASSWOOD (BUILDING)
- STATIC GRASS?
- PAINT?
- WIRE (CROSS BEARING)
- PAPER CLIPS (FIBERS)

MODULAR CONSTRUCTION



[HTTPS://WWW.CDSMITH.COM/PREFABRICATED-BUILDING-MATERIALS-ON-COMMERCIAL-CONSTRUCTION-PROJECTS](https://www.cdsmith.com/prefabricated-building-materials-on-commercial-construction-projects)



[HTTPS://BLOG.BAIBOP.COM/4-BENEFITS-OF-PANELIZED-CONSTRUCTION-HOMES](https://blog.baibop.com/4-benefits-of-panelized-construction-homes)



[HTTPS://WWW.CDSMITH.COM/PREFABRICATED-BUILDING-MATERIALS-ON-COMMERCIAL-CONSTRUCTION-PROJECTS](https://www.cdsmith.com/prefabricated-building-materials-on-commercial-construction-projects)

MASS TIMBER



[HTTPS://METROPOLISMAG.COM/PROJECTS/3-MASS-TIMBER-SHOPS-PUT-THE-SUPER-BACK-IN-SUPERMARKET/](https://metropolismag.com/projects/3-mass-timber-shops-put-the-super-back-in-supermarket/)

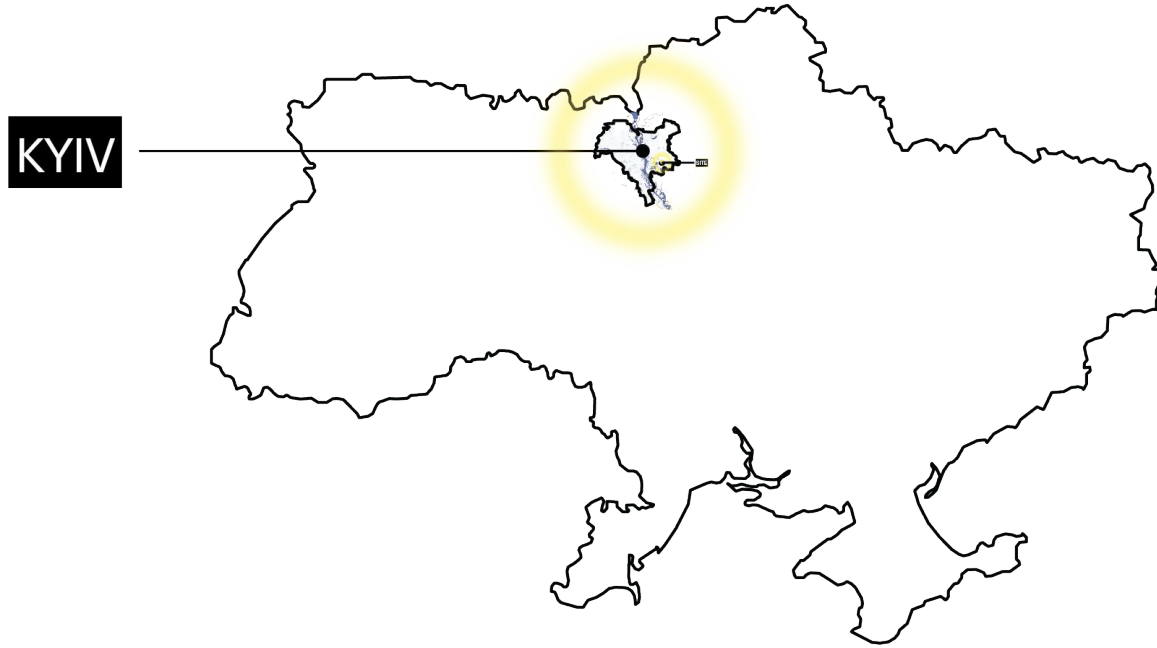


[HTTPS://NEWS.EMASS-TIMBER.COM/2023/03/20/MASS-TIMBER-CONSTRUCTION-A-COMP-REHEARSAL-EPISEDE/](https://news.ema.mass timber.com/2023/03/20/mass-timber-construction-a-comp-rehearsal-episode/)

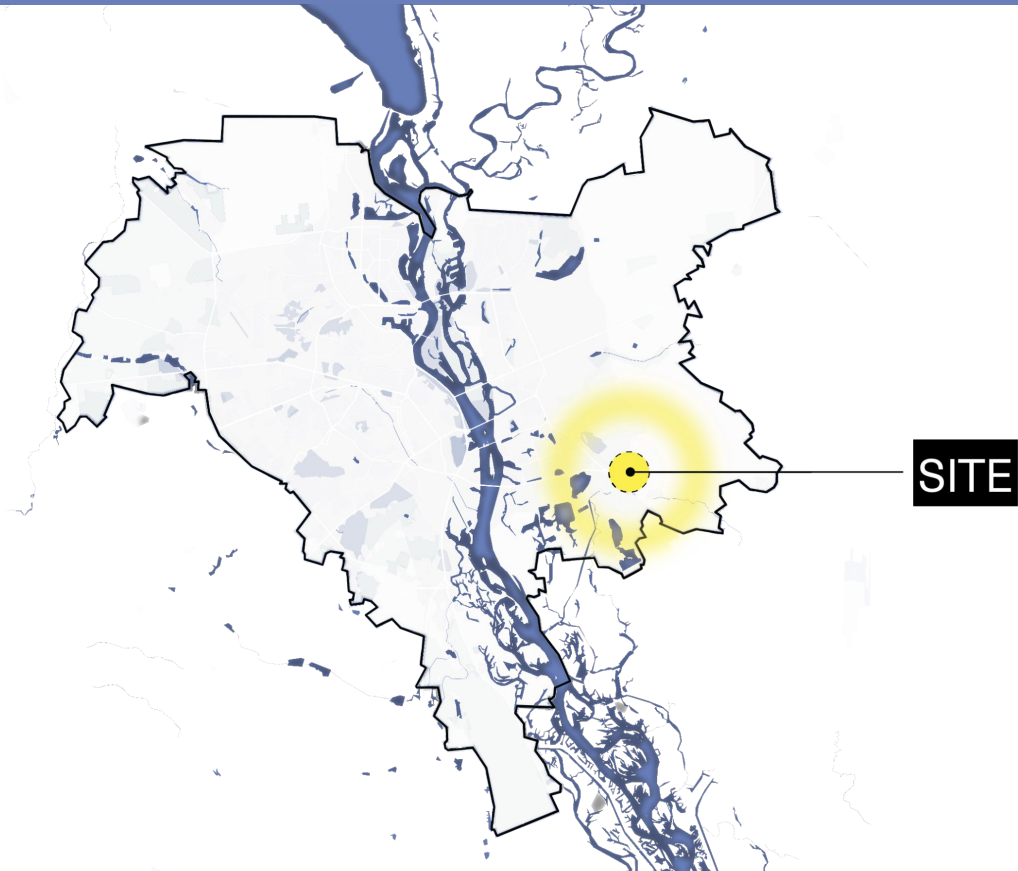


[HTTPS://WWW.ZEELN.COM/2020/10/16/BRUSSEL-S-BODE-MORTIME-CROISS-E-ANTWAF-TIMBER-HERFENING-S-HRED-IA-ARCHITECTS/](https://www.zeelen.com/2020/10/16/brussel-s-bode-mortime-croiss-e-antwaf-timber-herfening-s-hred-ia-architects/)

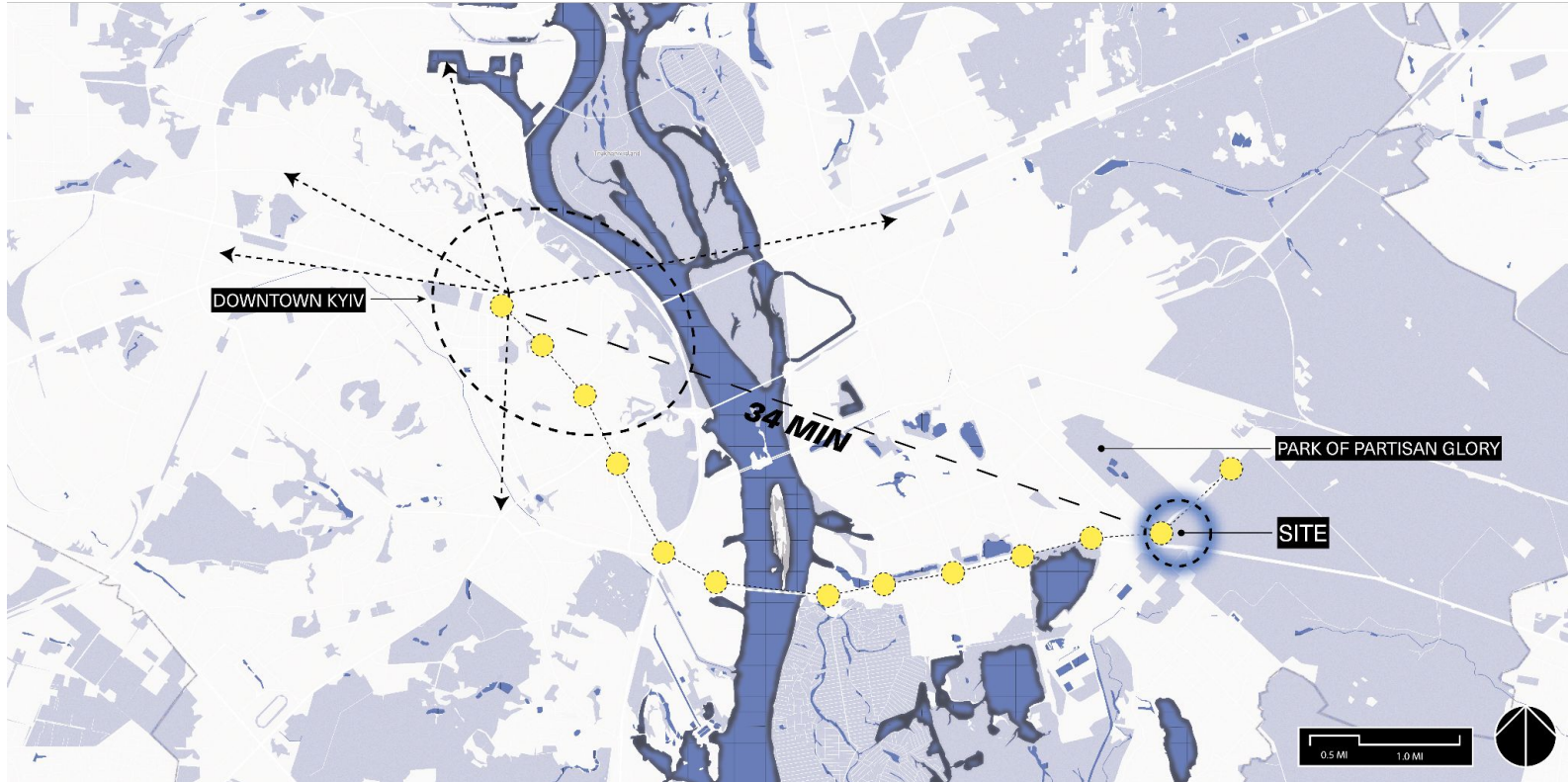
WHERE?



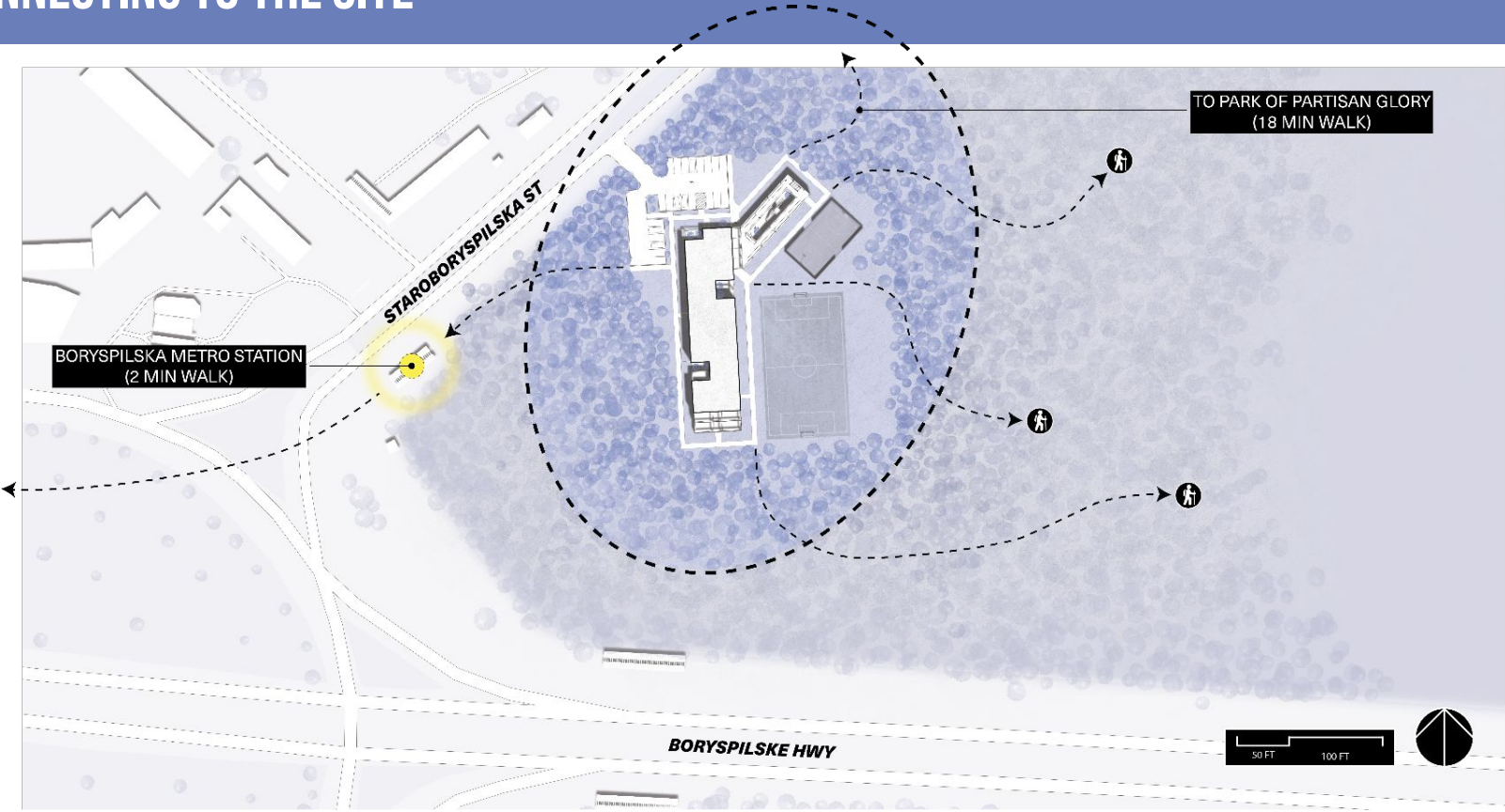
WHERE??



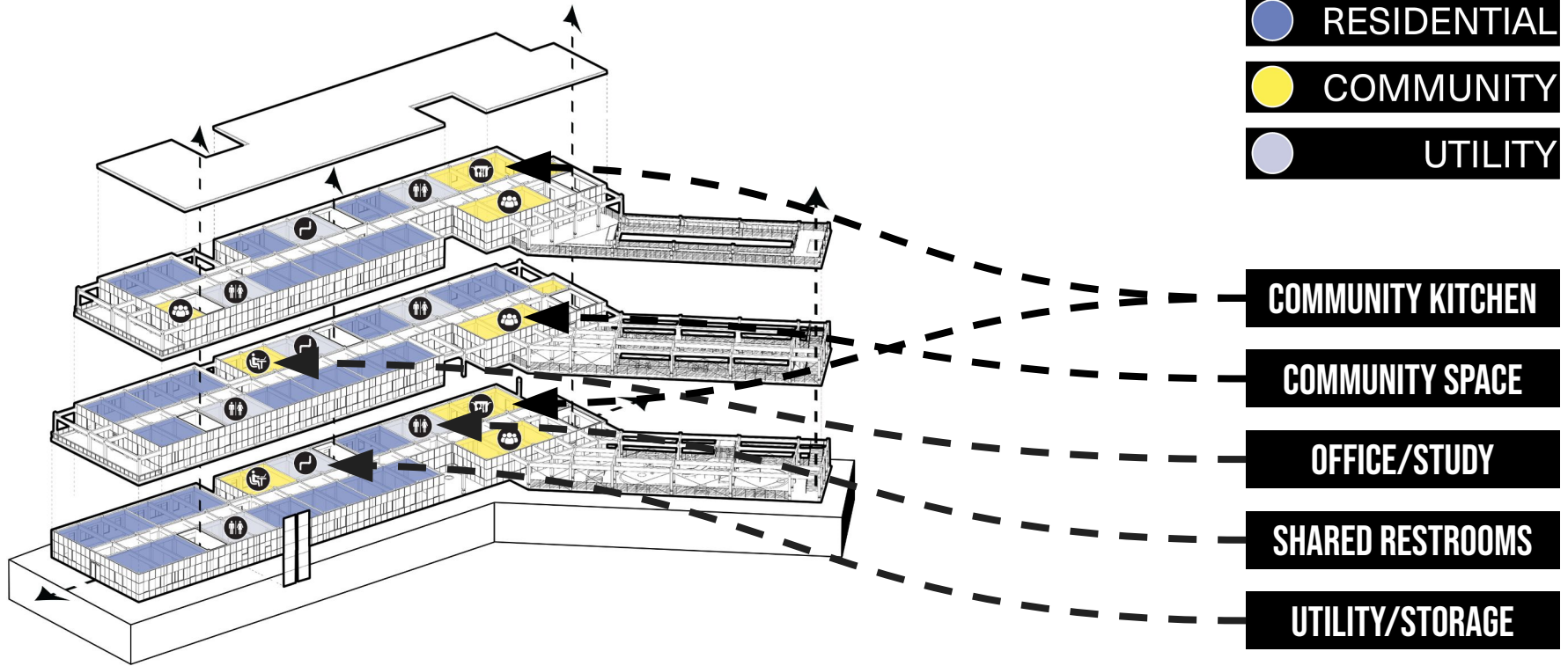
CONNECTING TO THE CITY



CONNECTING TO THE SITE



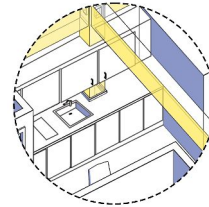
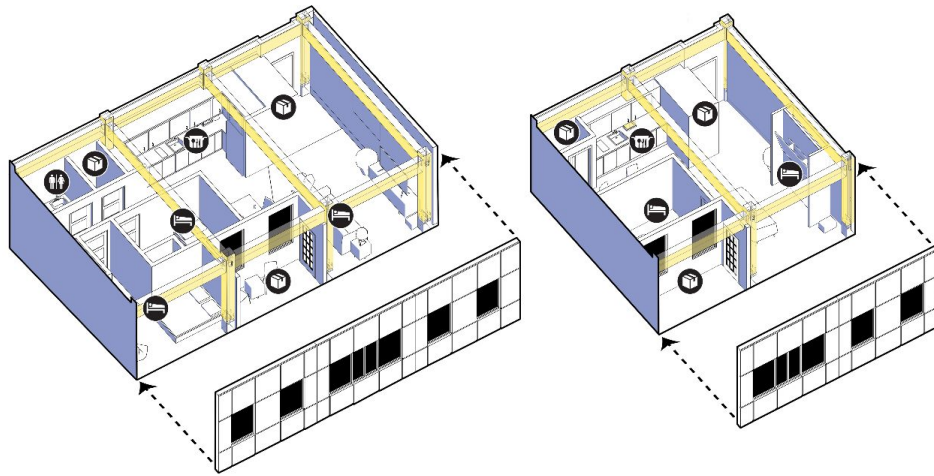
ANATOMY



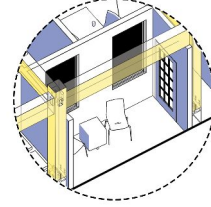
UNITS



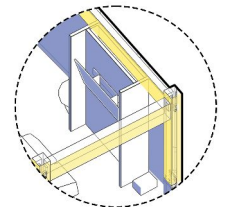
UNITS



 **KITCHENETTE**



 **BALCONY**

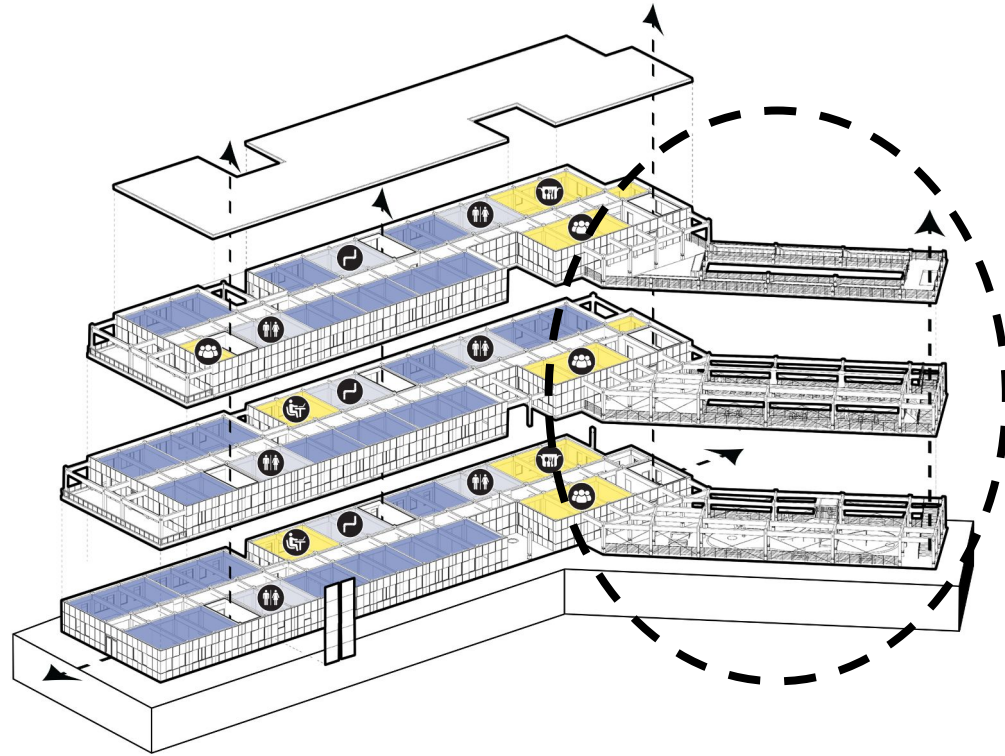


 **HIDDEN BED**

COMMUNITY FOCUS



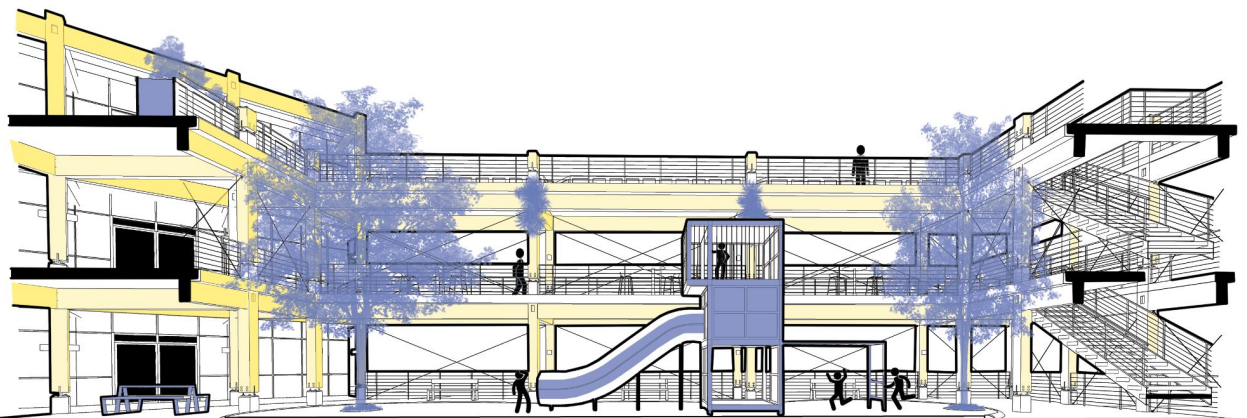
INTERMEDIARY SPACE



INTERMEDIARY SPACE



INTERMEDIARY SPACE

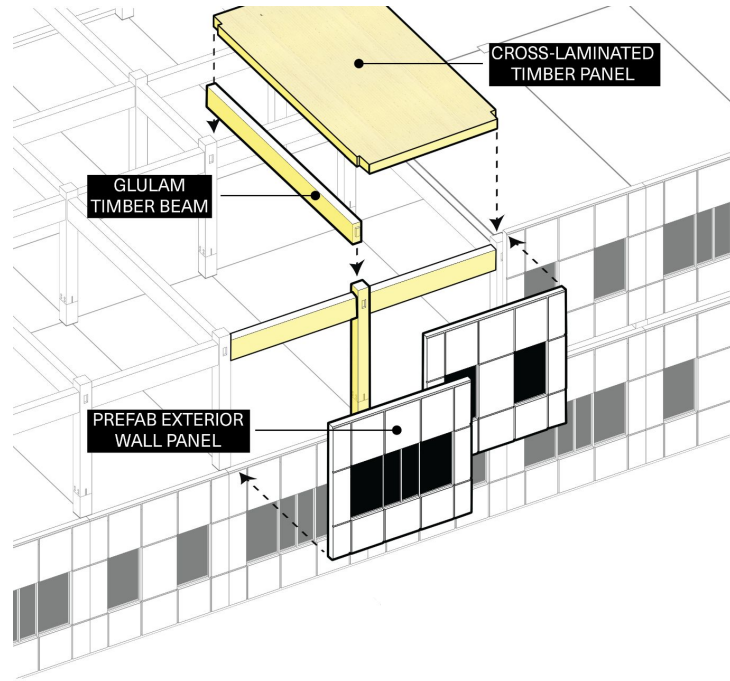


LEVEL 3

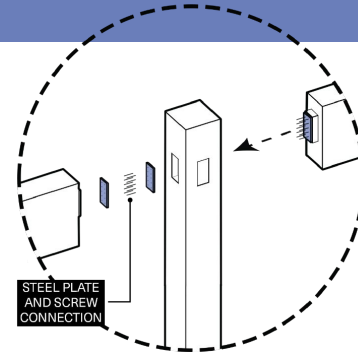
LEVEL 2

LEVEL 1

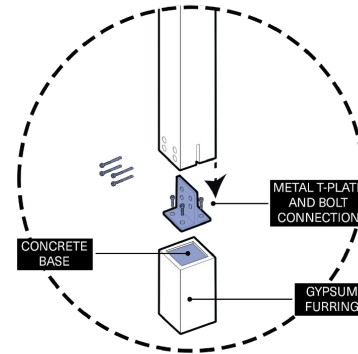
THE DETAILS



BEAM TO COLUMN

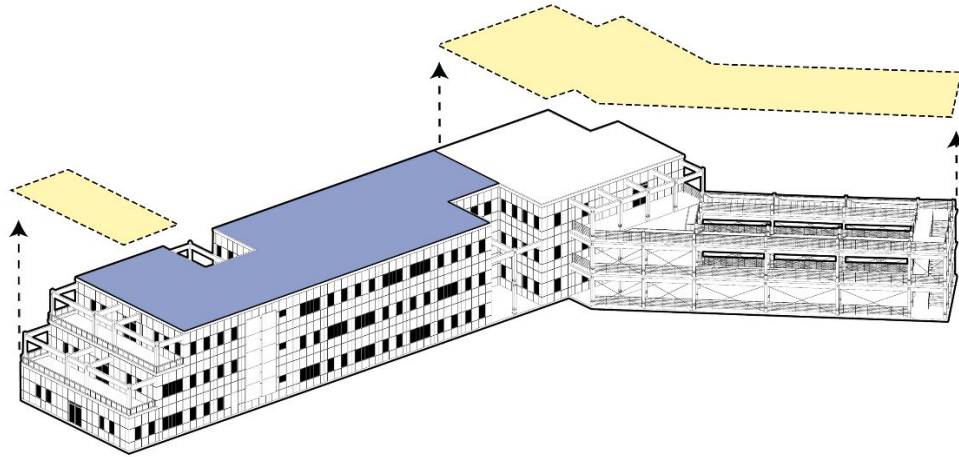


COLUMN TO GROUND



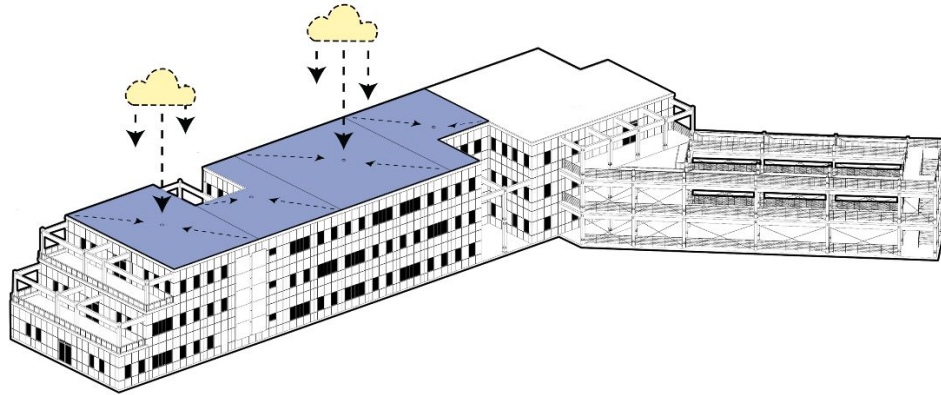
SUSTAINABILITY

GREEN ROOF



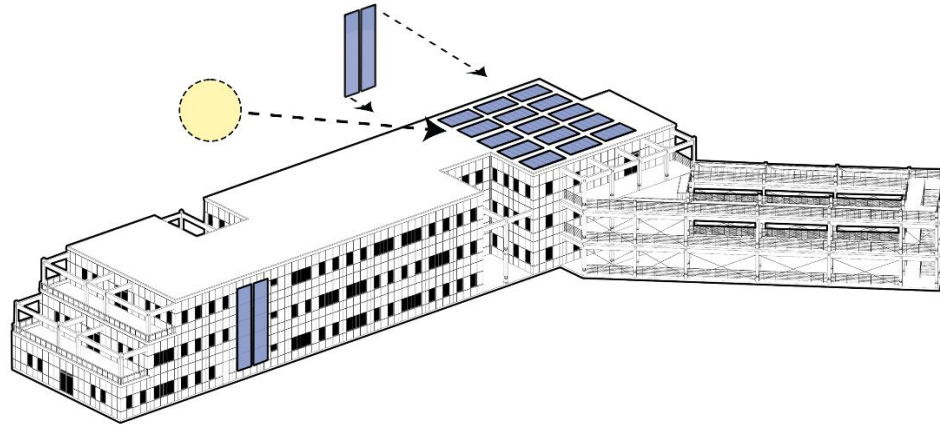
SUSTAINABILITY

WATER COLLECTION



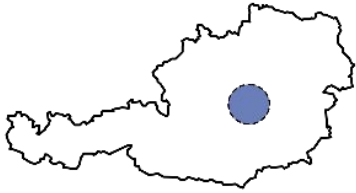
SUSTAINABILITY

POWER GENERATION



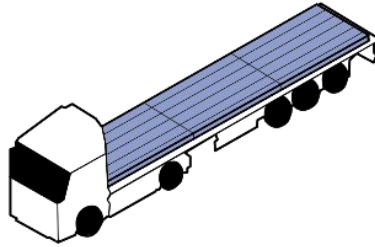
HOW IT IS DONE

SOURCE



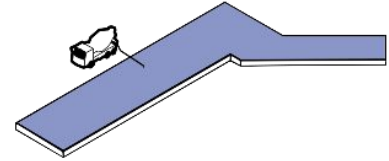
AUSTRIAN TIMBER

TRANSPORT



VIA ROAD AND RAIL

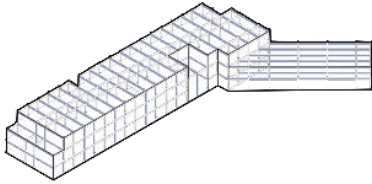
PREPARE



GRADING AND FOUNDATION

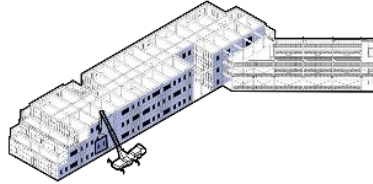
HOW IT IS DONE

STRUCTURE



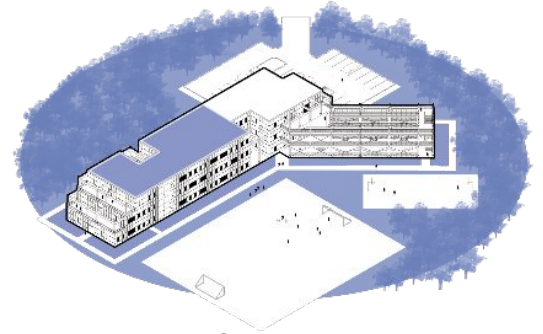
MASS TIMBER

FINALIZE



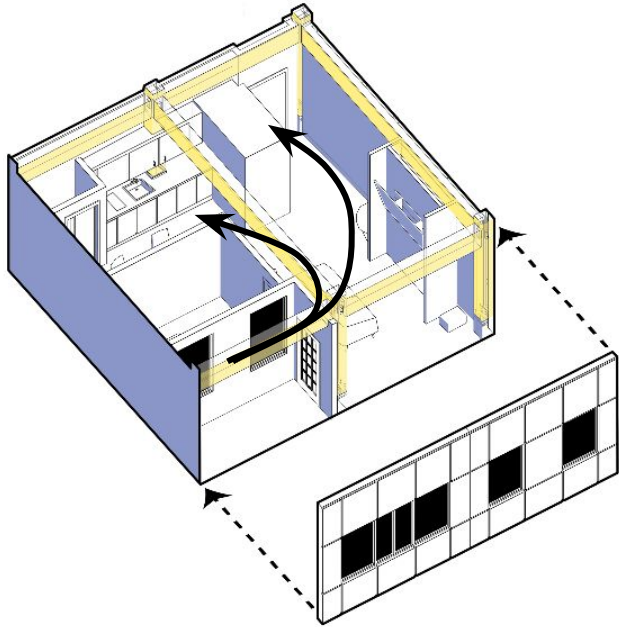
WALL PANELS AND DETAILS

HABITAT



RETURN TO A NEW UKRAINE

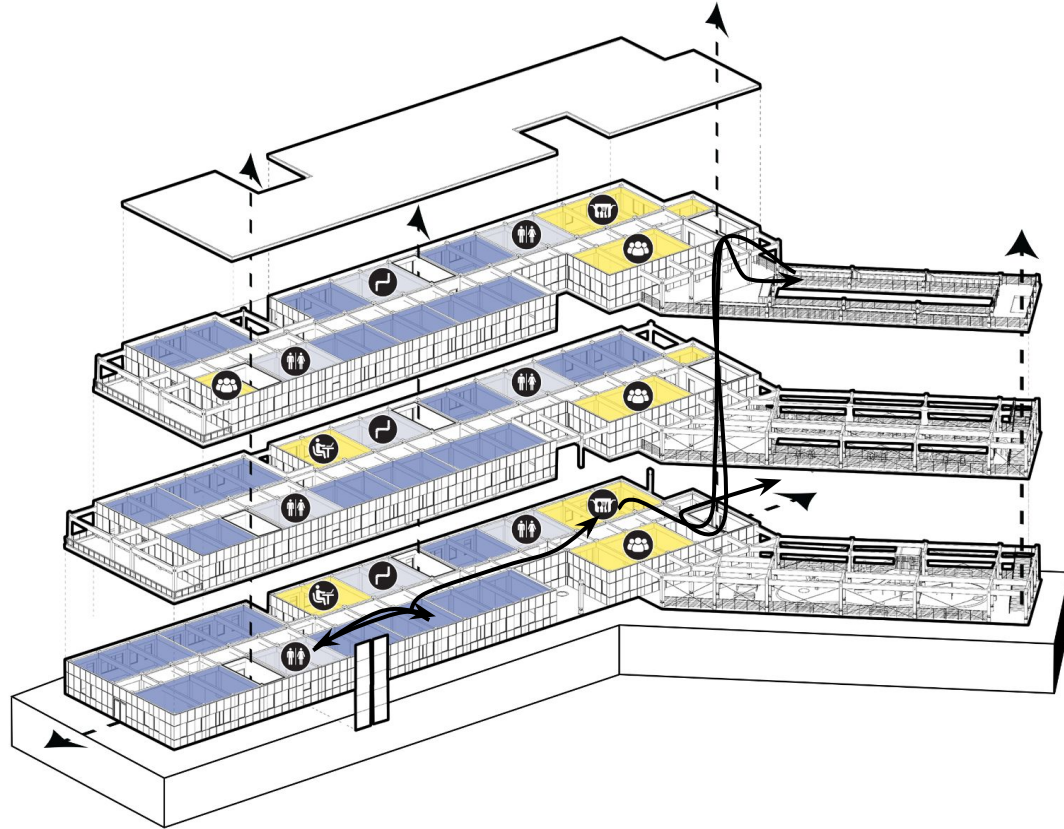
EXPERIENCE



OLADKY



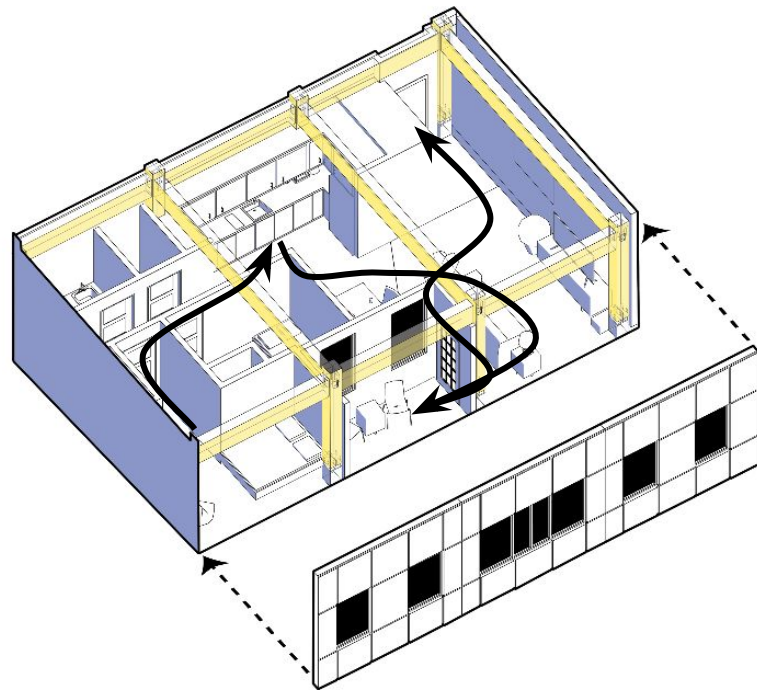
EXPERIENCE



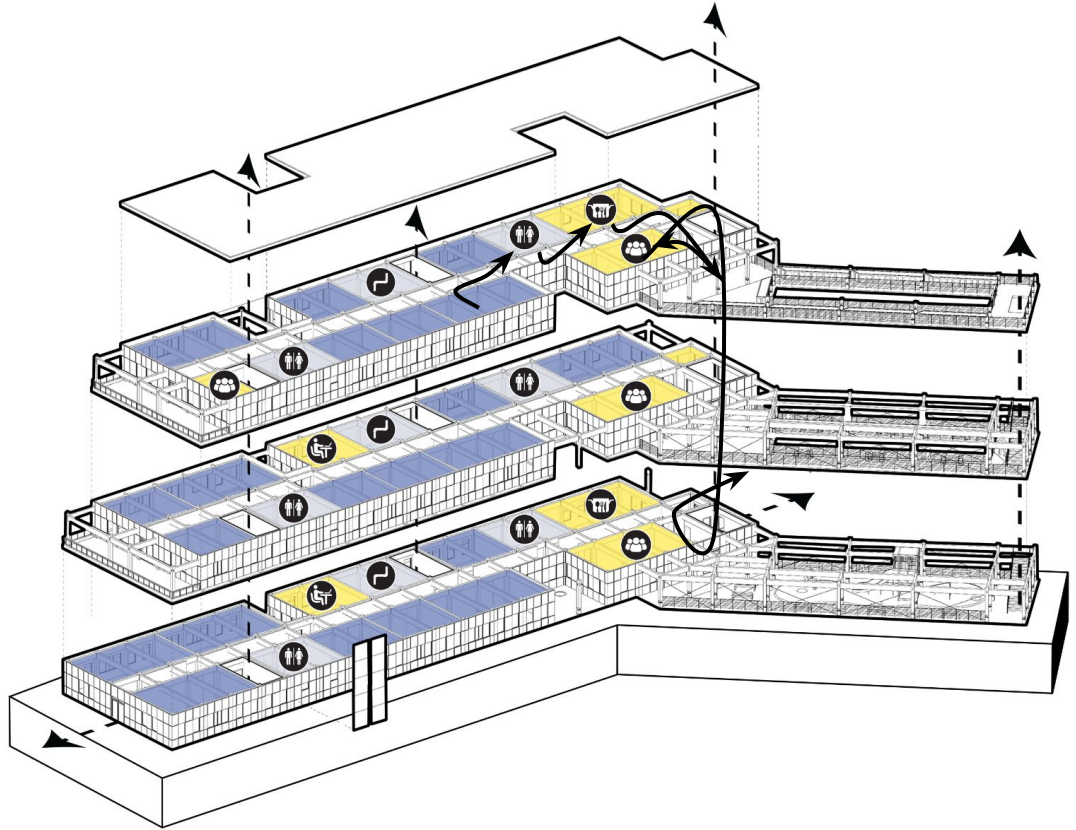
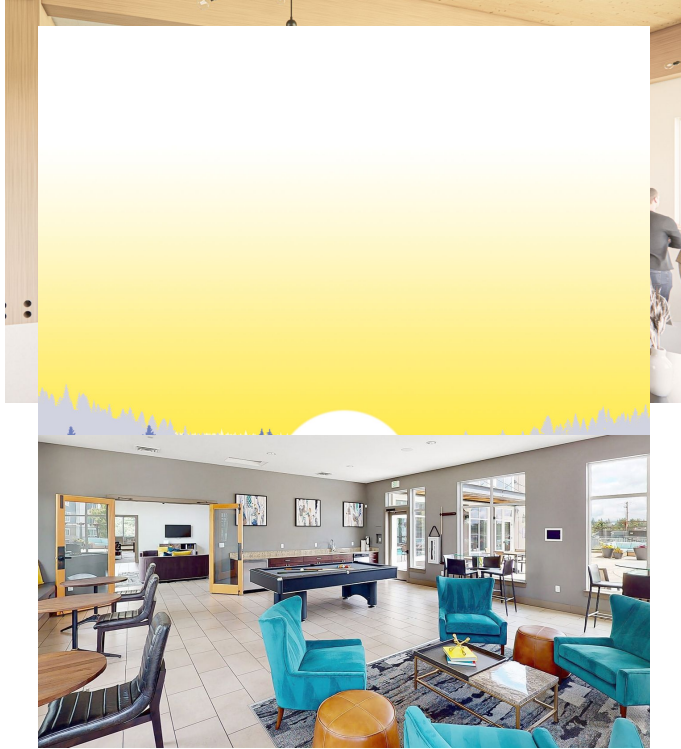
HOLUPSTI



EXPERIENCE

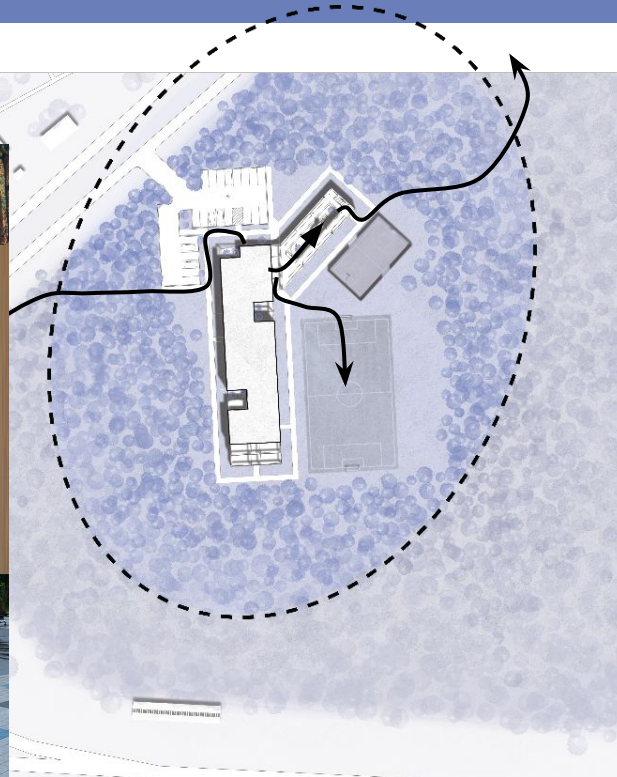


EXPERIENCE



EXPERIENCE

WEEKDAY



WEEKEND



WOUNDS...



[HTTPS://WHYY.ORG/ARTICLES/RUSSIA-UKRAINE-WAR-ANNIVERSARY-ONE-YEAR-WHATS-AHEAD/](https://www.whyy.org/articles/ruussia-ukraine-war-anniversary-one-year-whats-ahead/)



[HTTPS://WWW.CFR.ORG/IN-BRIEF/UKRAINE-HUMANITARIAN-CRISIS-REFUGEES-AID](https://www.cfr.org/in-brief/ukraine-humanitarian-crisis-refugees-aid)

WOUNDS... WILL HEAL



[HTTPS://WWW.MILWAUKEEINDEPENDENT.COM/SYNDICATED/DRONE-IMAGES-IRPIN-SHOW-DEVASTATING-SCOPE-WAR-CRIMES-RUSSIAN-FORCES-TARGETING-CIVILIAN-HOMES/](https://www.milwaukeeindependent.com/syndicated/drone-images-irpin-show-devastating-scope-war-crimes-russian-forces-targeting-civilian-homes/)



[HTTPS://WWW.ATLANTICCOUNCIL.ORG/BLOGS/UKRAINEALERT/REBUILDING-UKRAINE-ONE-HOUSE-AT-A-TIME/](https://www.atlanticcouncil.org/blogs/ukrainealert/rebuilding-ukraine-one-house-at-a-time/)

LET'S REBUILD UKRAINE



WHAT IF YOU WERE IN THEIR SHOES?

THANK YOU

QUESTIONS?
