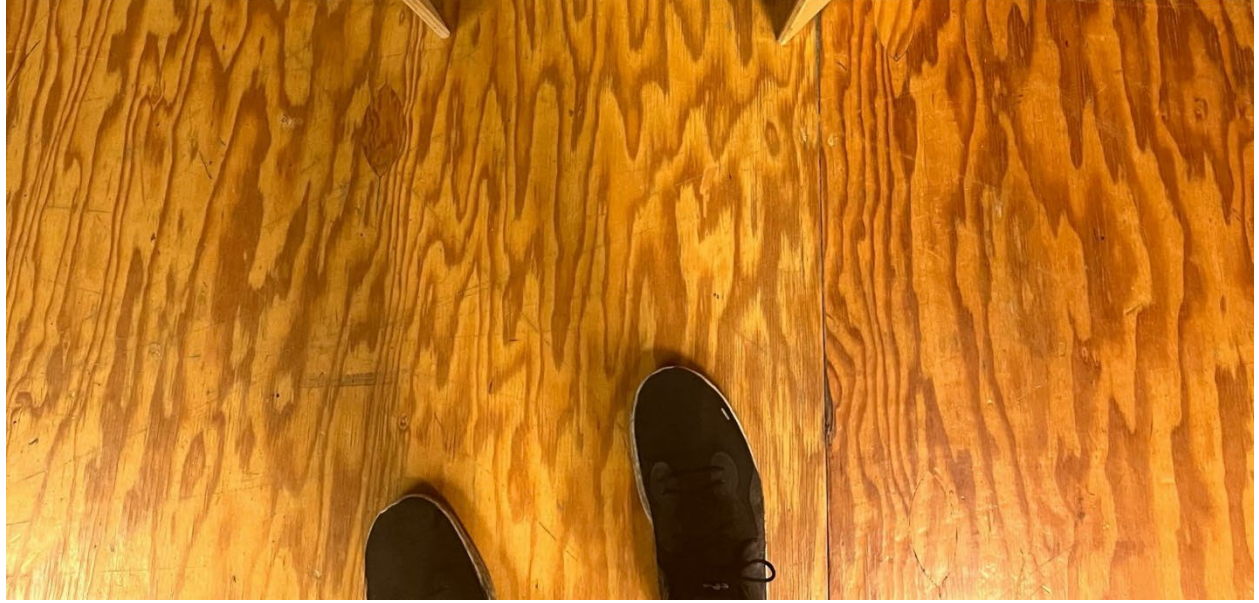
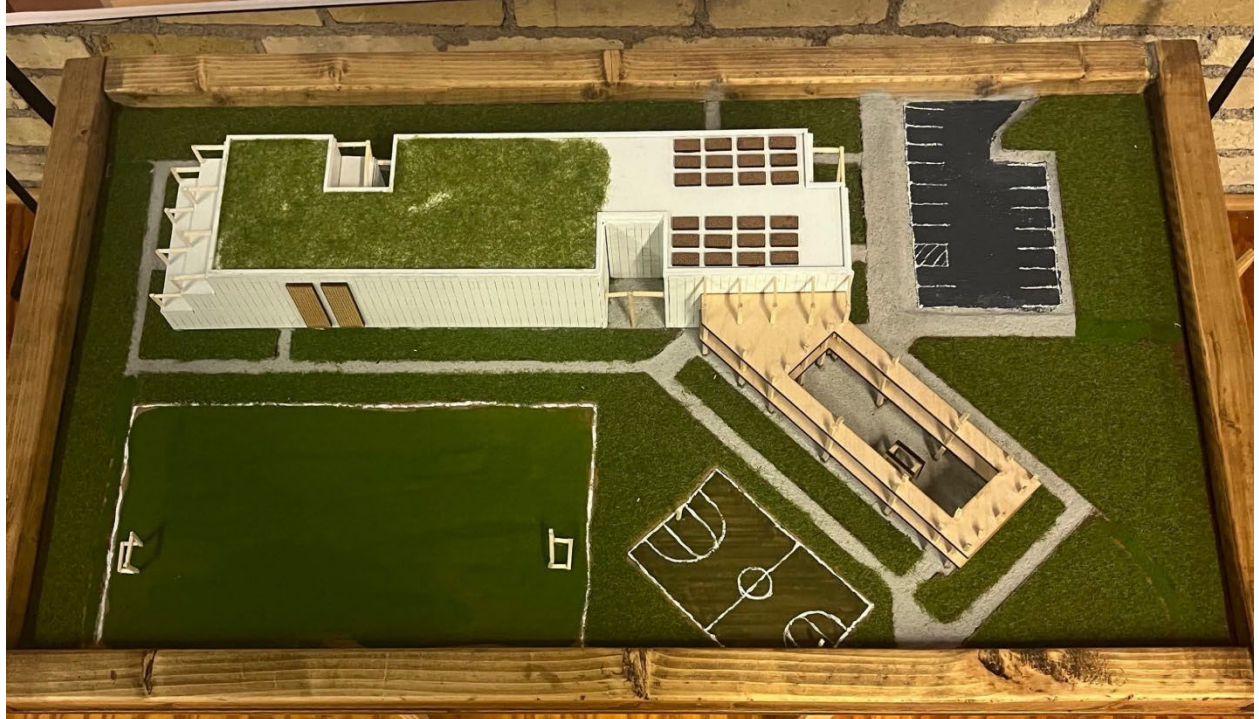


BALCONY
 NEEDED BALCONY SPACE IS
 A KEY FEATURE OF URBAN
 HIGH-DENSITY APARTMENTS.
 WITH PLANTING AND OPENABLE
 SHUTTERS, ITS PRIMARY USE IS FOR
 VISUAL SCREENING, BUT CAN
 ALSO BE UTILIZED AS AN AREA OF
 LEISURE.

MIDWINTER BED
 SOME BEDROOM UNITS FEATURE
 A "MIDWINTER BED" TO PROVIDE
 AN EXTRA SPACE OF REST FOR
 SEVERAL. THIS DEVICE, NORMALLY
 FOLDING AND MOUNTED TO WALLS,
 CAN BE FOLDED AND UNFOLDED WITH EASE
 TO HELP SERVE AS A MANNER IN
 WHICH TO SAVE IN BALCONY SPACE AS
 MUCH AS POSSIBLE.

POWER UTILIZATION
 BOTH ON THE ROOF AND
 ON SPECIFIC ANGLES OF THE
 FACADE, PHOTOVOLTAIC (PV)
 PANELS CAN BE INSTALLED
 TO GENERATE POWER FOR
 COMMON AREAS. THE USE OF
 PV PANELS IS AN IDEAL WAY
 TO REDUCE THE CARBON FOOTPRINT
 OF A BUILDING. PHOTOVOLTAIC
 PANELS CAN BE INSTALLED ON
 THE ROOF OR ON AN ANGLE OF THE
 FACADE TO MAXIMIZE THE
 AMOUNT OF SOLAR RADIATION
 CAPTURED. PHOTOVOLTAIC
 PANELS CAN BE INSTALLED ON
 THE ROOF OR ON AN ANGLE OF
 THE FACADE TO MAXIMIZE THE
 AMOUNT OF SOLAR RADIATION
 CAPTURED. PHOTOVOLTAIC
 PANELS CAN BE INSTALLED ON
 THE ROOF OR ON AN ANGLE OF
 THE FACADE TO MAXIMIZE THE
 AMOUNT OF SOLAR RADIATION
 CAPTURED.

INSPECTION
 SYSTEMS AND ALSO THE
 FINISHING TOUCHES
 NEAR THE END OF THE
 CONSTRUCTION PHASE.
 INSPECTIONS ARE DONE TO
 ENSURE CONSTRUCTION
 QUALITIES ARE AS EXPECTED
 AND TO CORRECT ANY
 DEFECTS BEFORE THE
 BUILDING BEGINS
 OPERATION.



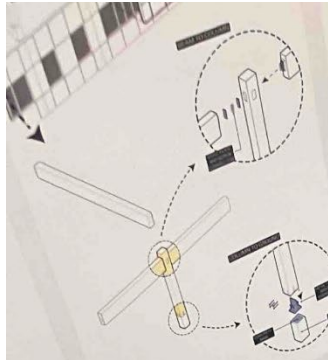






BY
KIM
BAKE
IN THE
KICK AS

PLAYGROUND



POINT TO POINT

BEHIND THE SCENES OF THE PROJECT, WE'VE HAD TO HANDLE A RANGE OF CHALLENGES. FROM THE INITIAL CONCEPT TO THE FINAL DESIGN, WE'VE WORKED CLOSELY WITH THE CLIENT TO ENSURE THAT THE PROJECT IS DELIVERED ON TIME AND WITHIN BUDGET.



COMMUNITY KITCHEN



WHAT IF YOU WERE IN THEIR SHOES?

RETURNING TO A NEW DESIGN...
THE DESIGN TEAM HAS BEEN CHALLENGED TO REIMAGINE THE SPACE TO MEET THE NEEDS OF THE COMMUNITY. THE DESIGN TEAM HAS BEEN CHALLENGED TO REIMAGINE THE SPACE TO MEET THE NEEDS OF THE COMMUNITY.