

# BUILDING BLOCKS TOWARDS NEW EDUCATION

Roosevelt Elementary School  
Fargo, ND  
2nd Floor Redesign

'ORIGINAL' LAYOUT RENDERING



SEMI-OPEN LAYOUT RENDERING



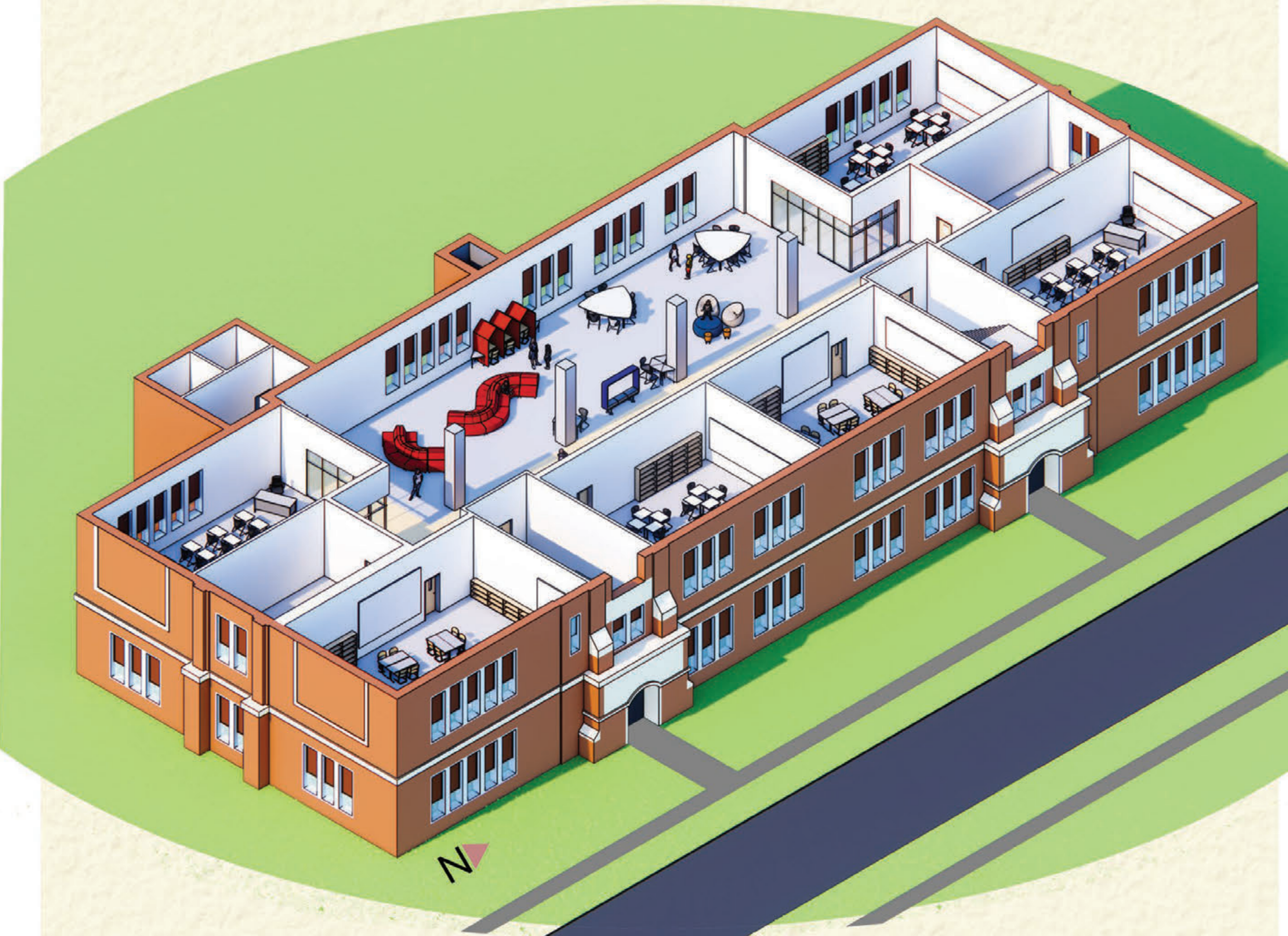
OPEN LAYOUT RENDERING



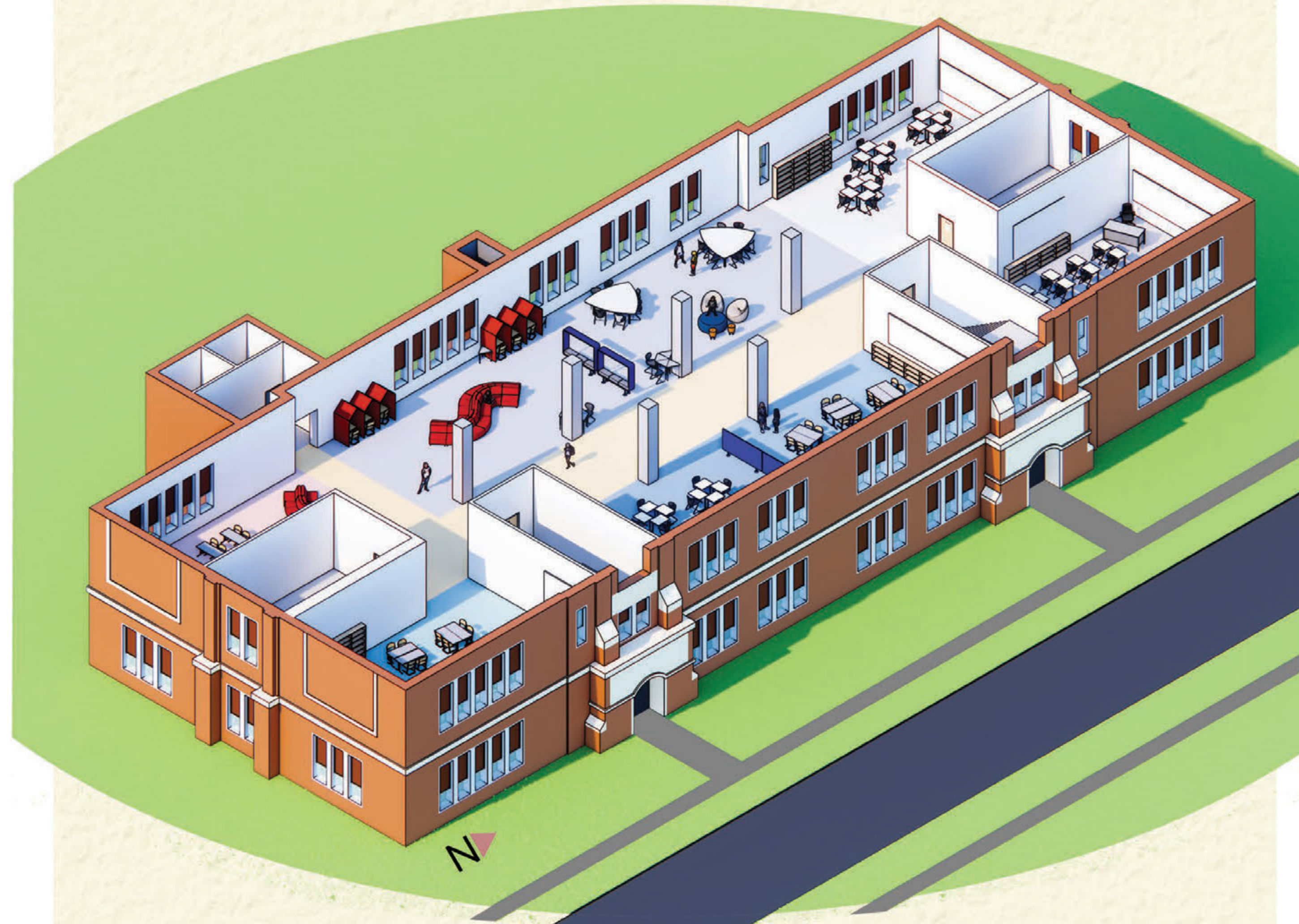
'ORIGINAL' 2ND FLR ORTHOGRAPHIC



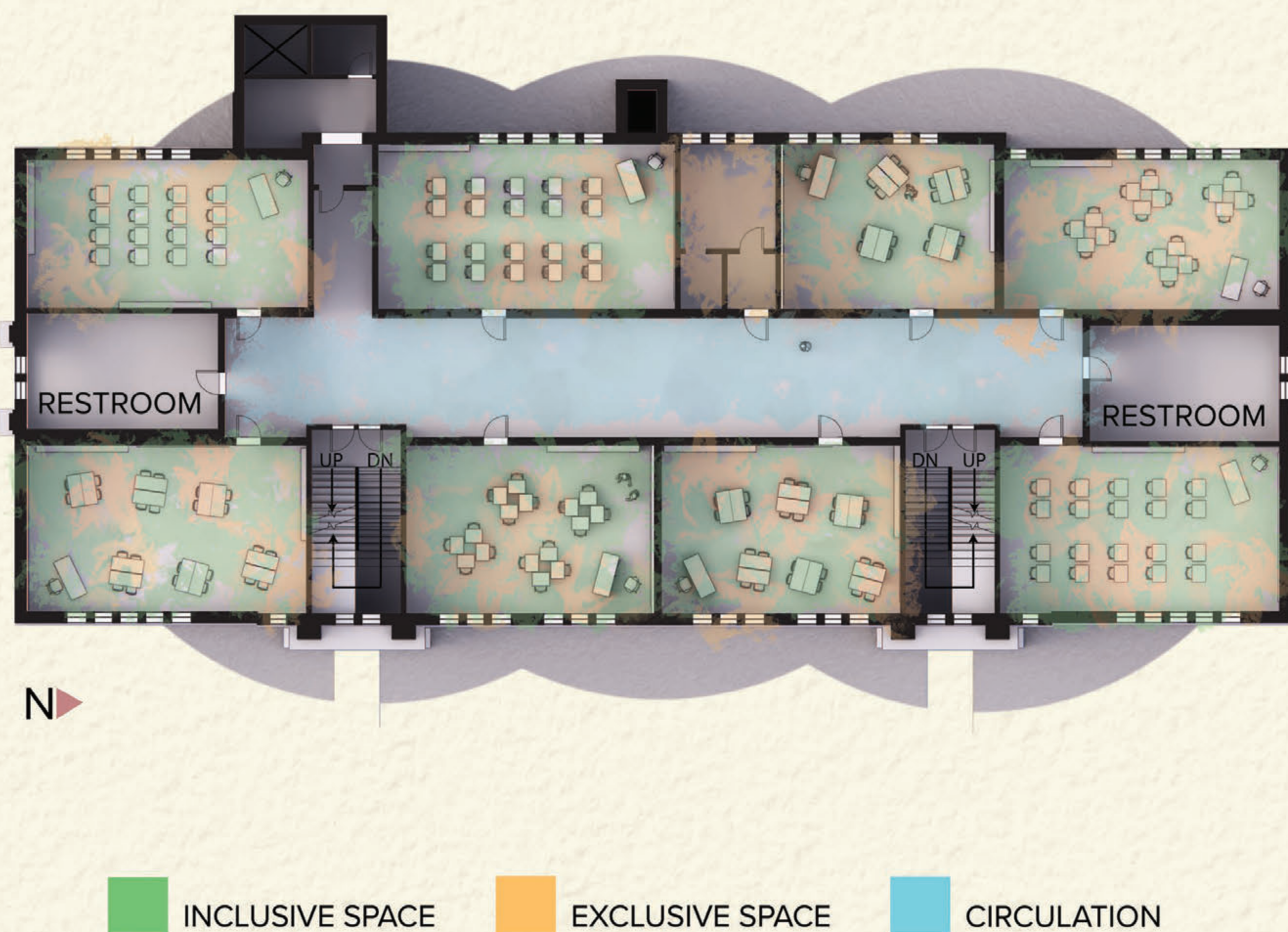
SEMI-OPEN 2ND FLR ORTHOGRAPHIC



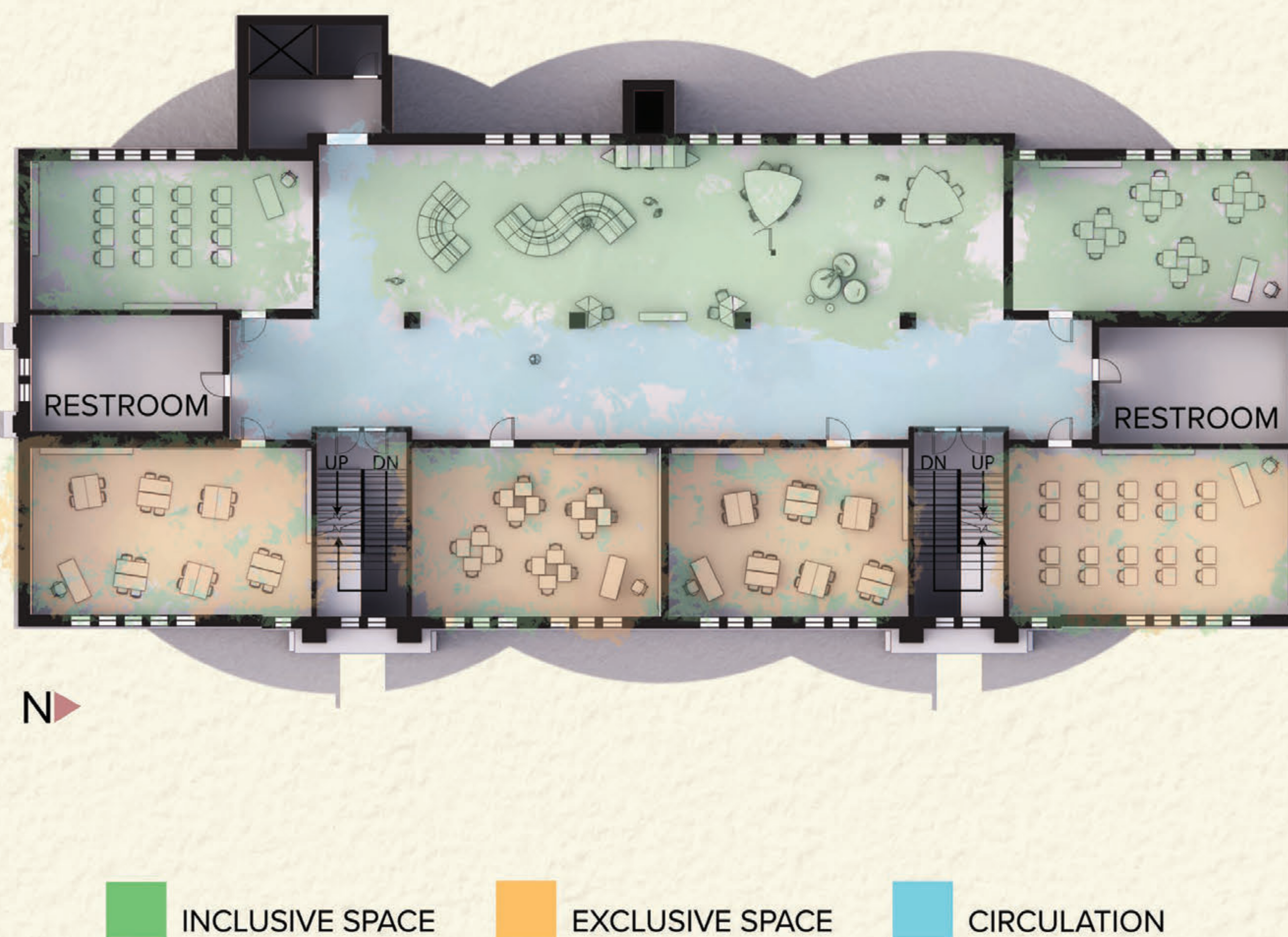
OPEN 2ND FLR ORTHOGRAPHIC



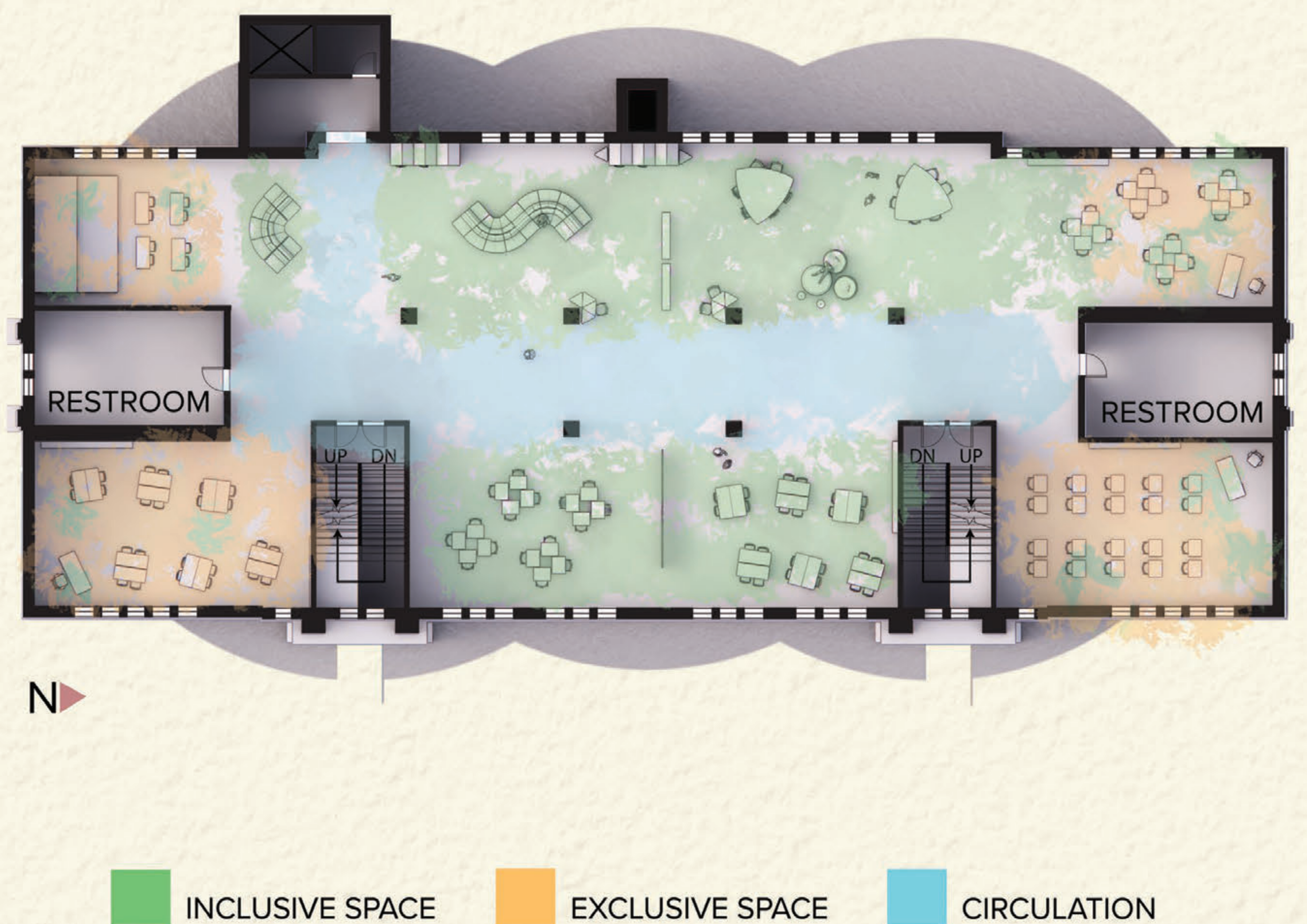
'ORIGINAL' LAYOUT PLAN VIEW



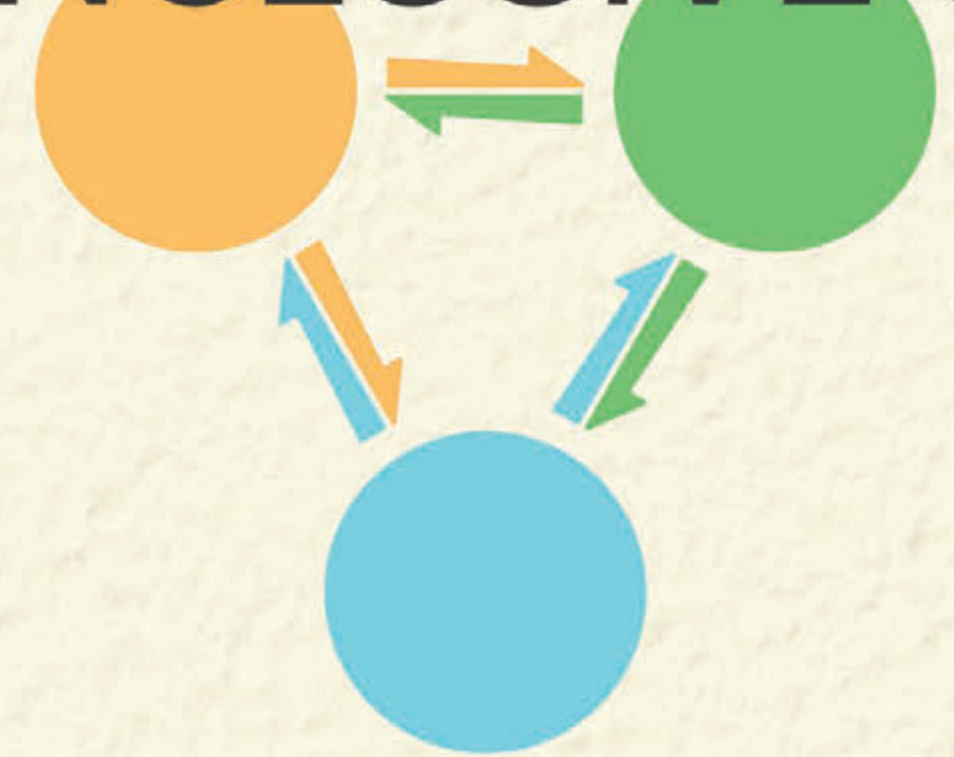
SEMI-OPEN LAYOUT PLAN VIEW



OPEN LAYOUT PLAN VIEW

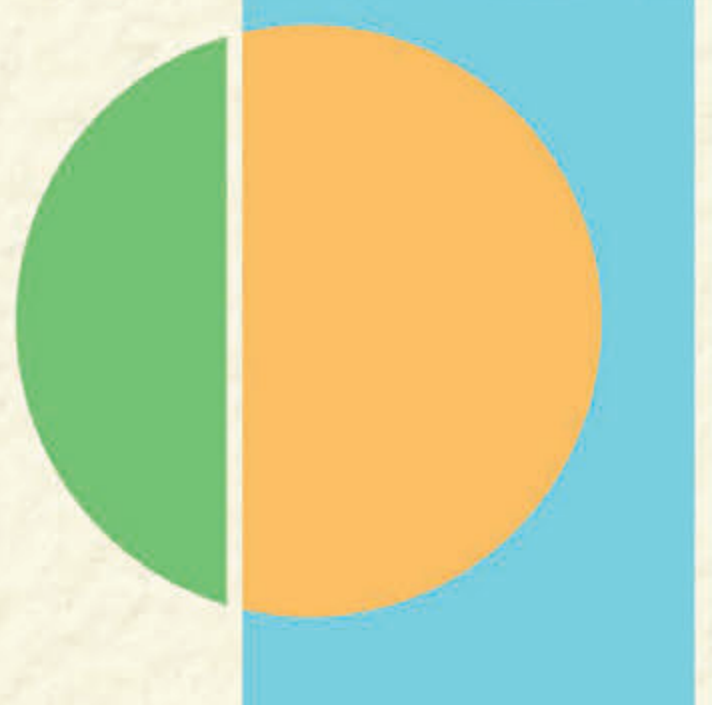


## INCLUSIVE SPACE



'Inclusive rooms' are as Christopher Platt describes from his Journal The Inhabited Perimeter and the Inclusive Room. "[Spaces that] accommodate different activities without relegating them into the distinct spatial divisions of rooms with doors." "No matter where you are in the space you feel included with what is going on."

## EXCLUSIVE SPACE



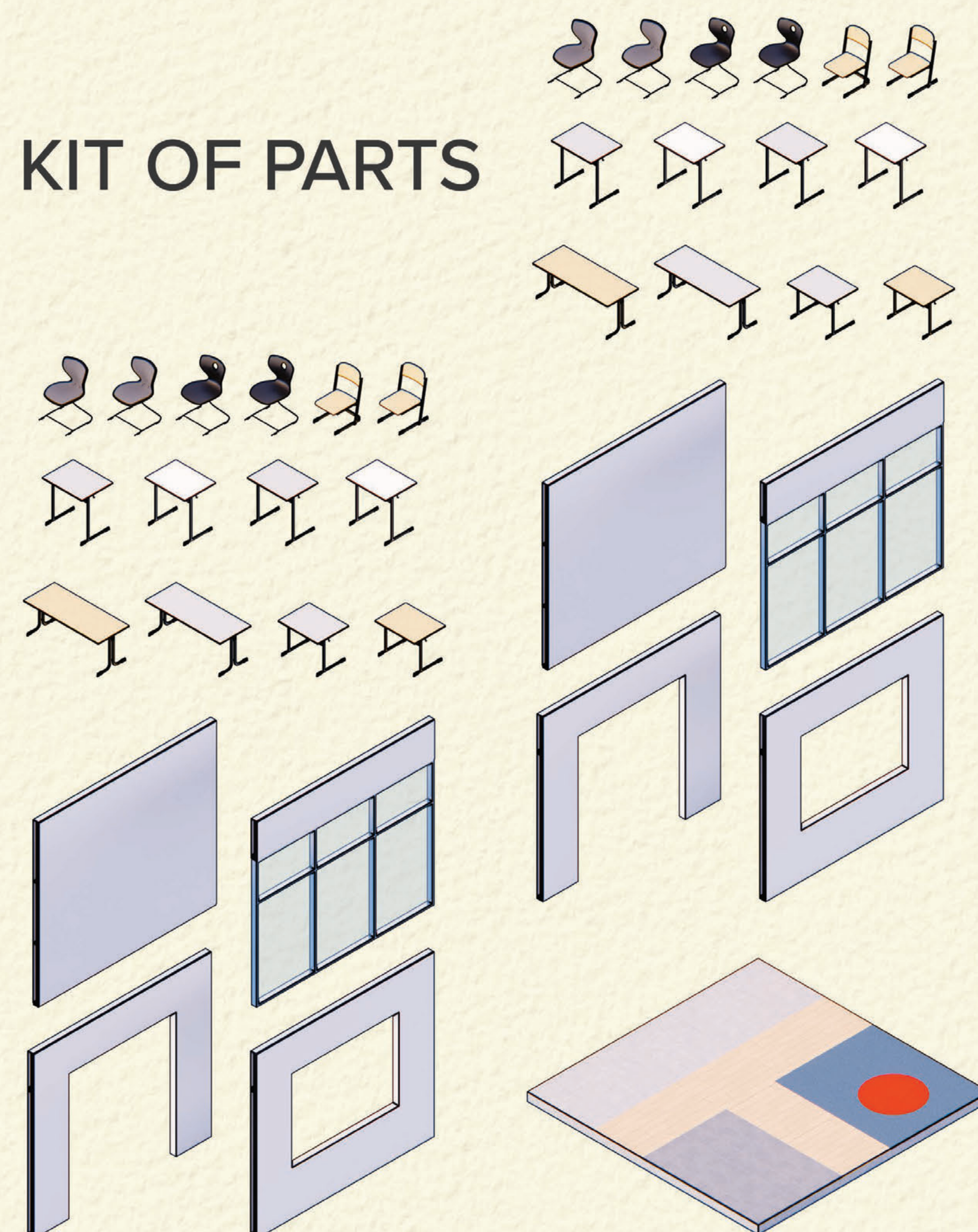
Areas that allow students to get away from the general commotion. Promotes focused learning for students that get easily distracted. While inclusive spaces aim to include you in the activities going on in the space, exclusive spaces aim to provide a little bit of separation from all the business.

## CIRCULATION



Circulation is the road that connects spaces together. While primarily for directing the flow of traffic, this space can also provide opportunities aside from traveling from one place to another. It can be a conduit for interaction between students of different ages or classes. Students can see and be seen while walking on this path.

## KIT OF PARTS



## DESIGN

