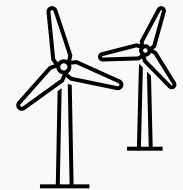
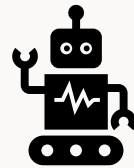


# Building Blocks Towards New Education

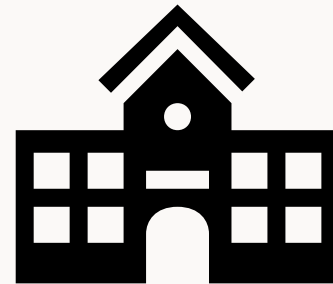
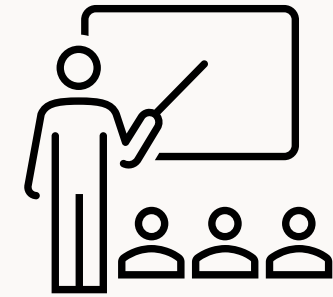
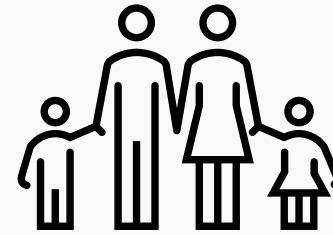


# Introduction





(Grill, n.d.)



# Introduction

Research Question  
Research Objectives

# Background

How has digital technology impacted education?  
What steps have already been taken to address technology within the classroom?  
What are the current trends in classroom design?

# Methodology

Site  
Interview  
Case Study

# Results

# Research Question

With the rapid development of digital technology, how can schools adapt to the effects digital technology has had on education?

## Research Objectives

Studying what impact digital technology has had on education.

Identifying trends in classroom designs.

Proposing a possible method to designing new learning environments with the effects of technology in mind.

# Background

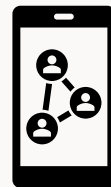
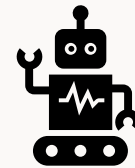
How has digital technology impacted education?

What steps have already been taken to address technology within the classroom?

What are the current trends in classroom design?

“Digital technology refers to electronic tools, devices, and systems that process, transmit and store data in binary form.”

~Marc Berman, Programming Insider



# How has Digital Technology Impacted Education?



Creating inclusive learning environments

Developing teamwork and communication skills

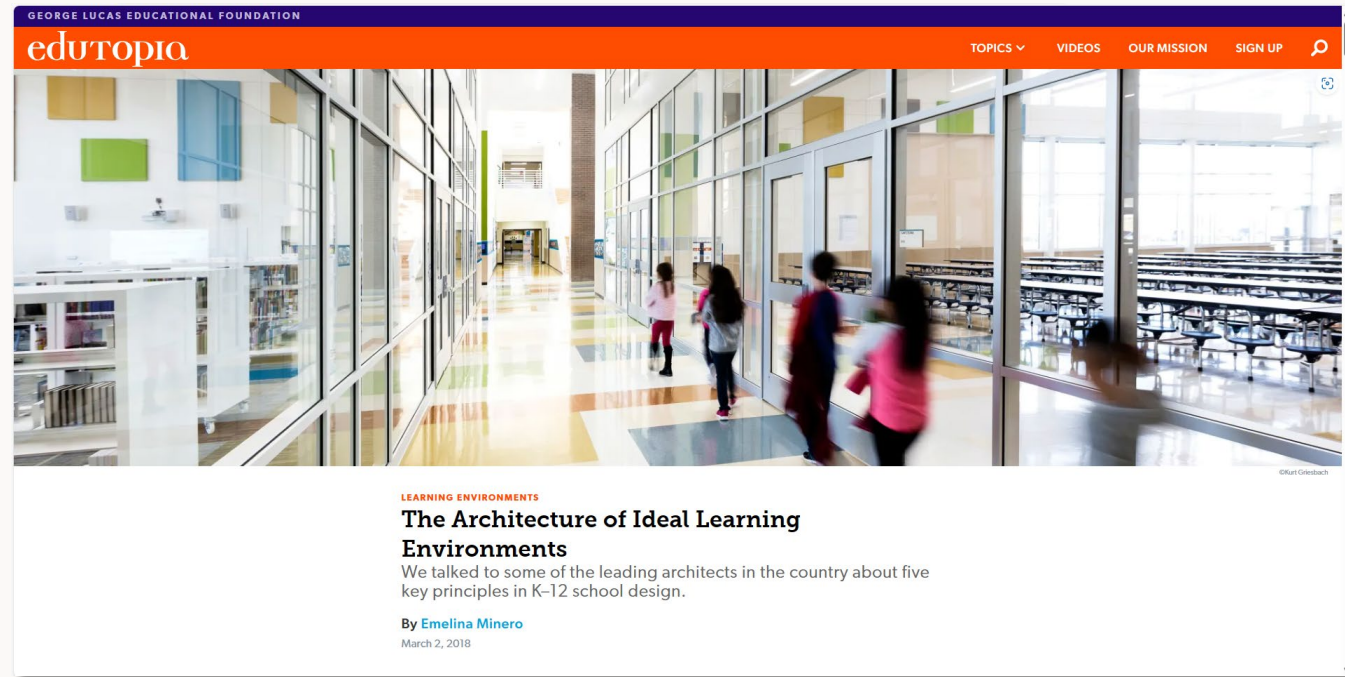
Flexible education

Students gain self-learning abilities

Dynamic learning



# What steps have already been taken to address technology within classrooms?



“The effects can be subversive in all the right ways, reducing students’ dependence on the teacher, promoting peer-to-peer collaboration, and widening the sphere of learning from the confines of the classroom to the whole school grounds.”

# What are the current trends in classroom design?



(Biss, n.d.)



(Knox, 2017)



(Flexible, Open Learning Spaces | WoodSolutions, n.d.)



(Mergler, 2017)



(Kurani, 2016)



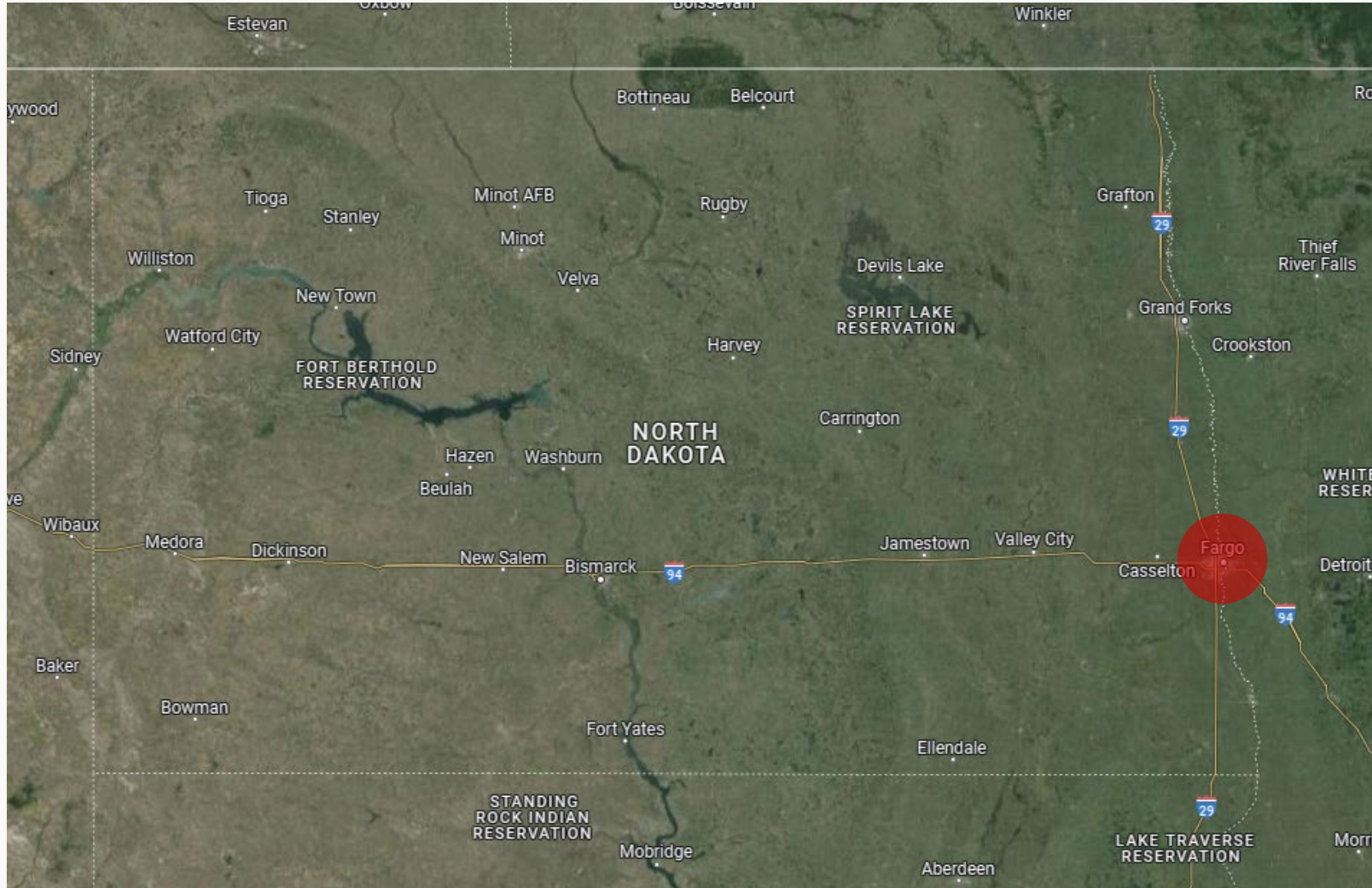
(NorvaNivel, n.d.)

# Methodology

Site  
Interview  
Case Study

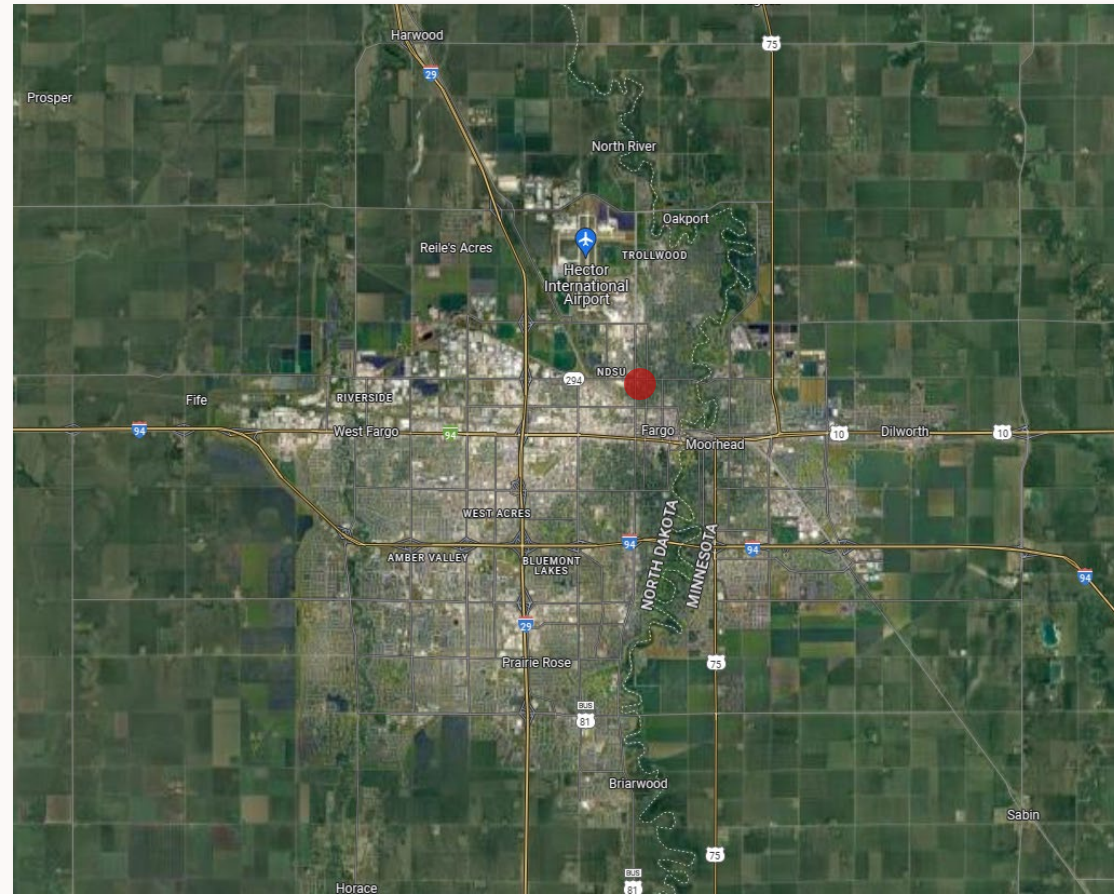
# Site

Fargo, ND



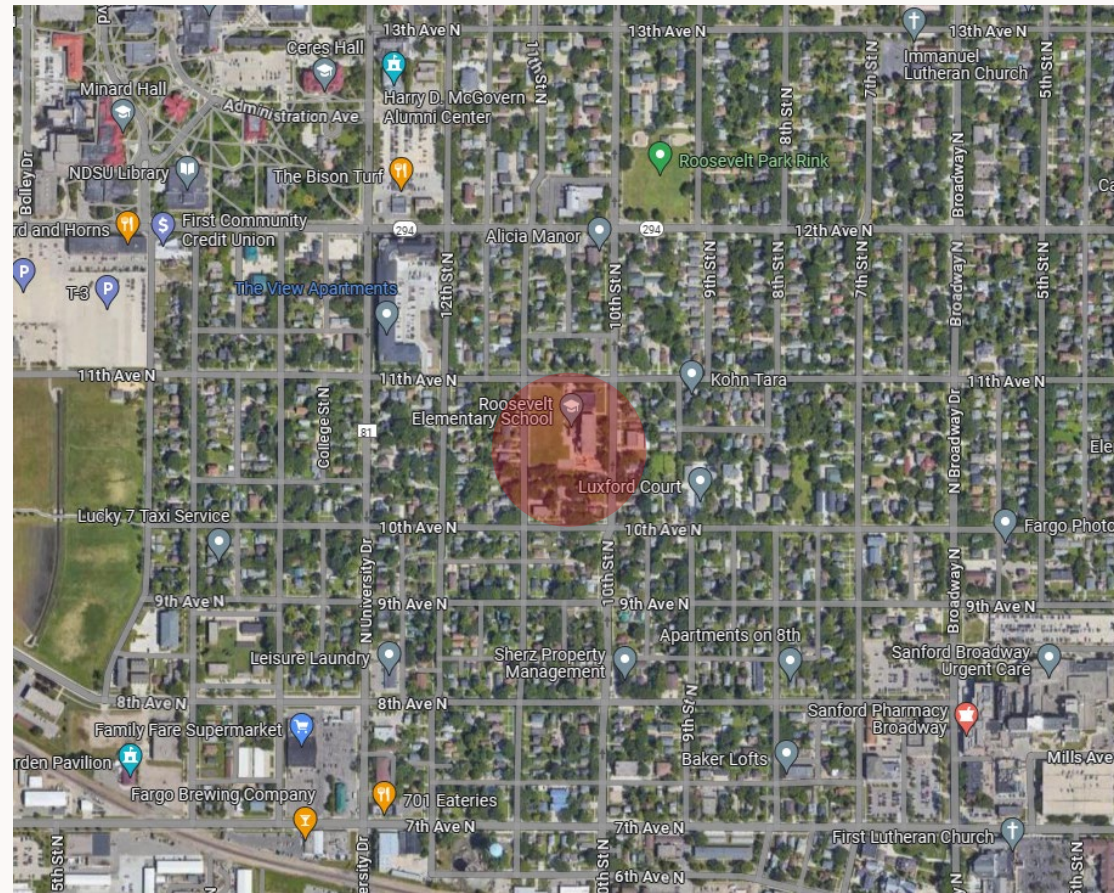
# Site

Fargo, ND



# Site

Fargo, ND



# Fargo Public Schools (FPS)



Self-Directed Learning Academy

Interview with Dr. Gandhi and Dr. Grosz  
(superintendent and associate superintendent respectively)

Provided floors plans for Roosevelt

# Rosan Bosch

“Our design of spaces is based on six principles that connect learning situations to the physical framework. Each describes a constellation for the learners' focus and interaction.”



MOUNTAIN TOP



CAVE



CAMPFIRE



WATERING HOLE



HANDS-ON

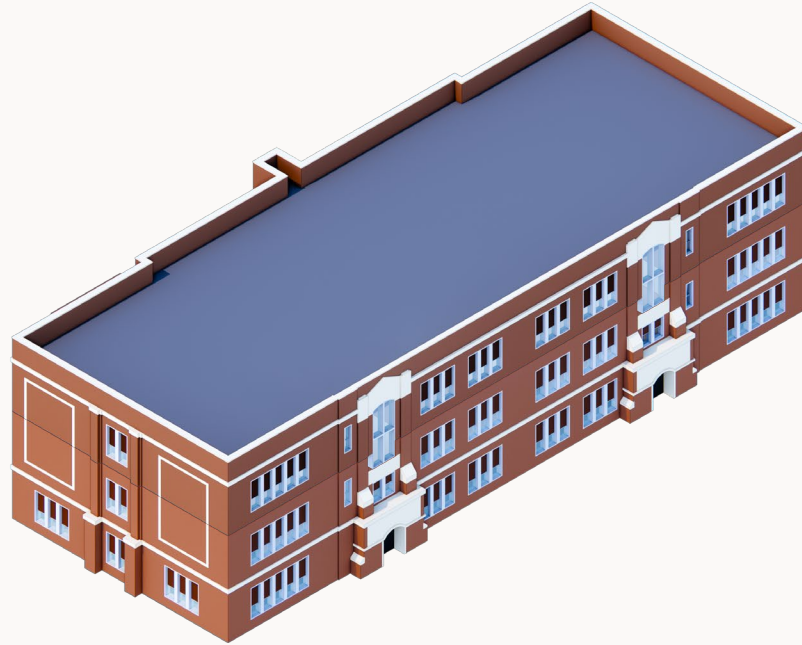


MOVEMENT



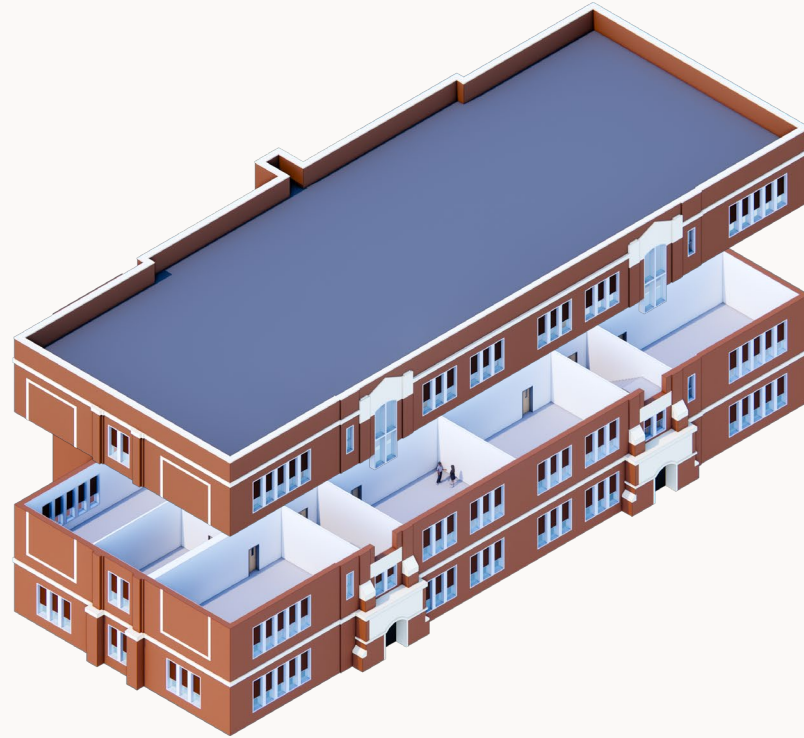
# Kit of Parts

## Retrofitting and Redesigning the 2<sup>nd</sup> Floor of Roosevelt ES



# Kit of Parts

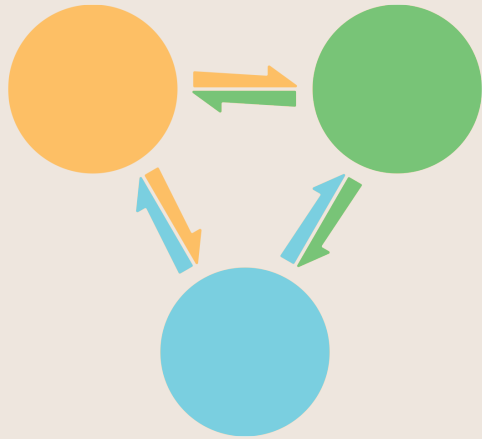
## Retrofitting and Redesigning the 2<sup>nd</sup> Floor of Roosevelt ES



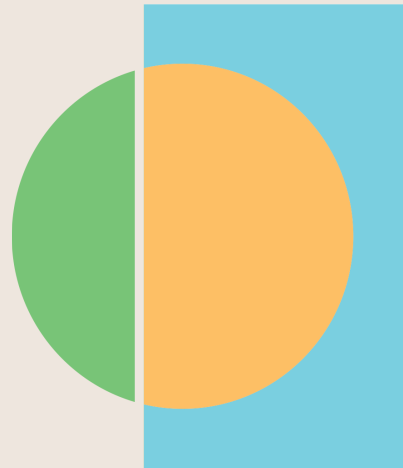
# Results

# Analyze and Plan

Inclusive



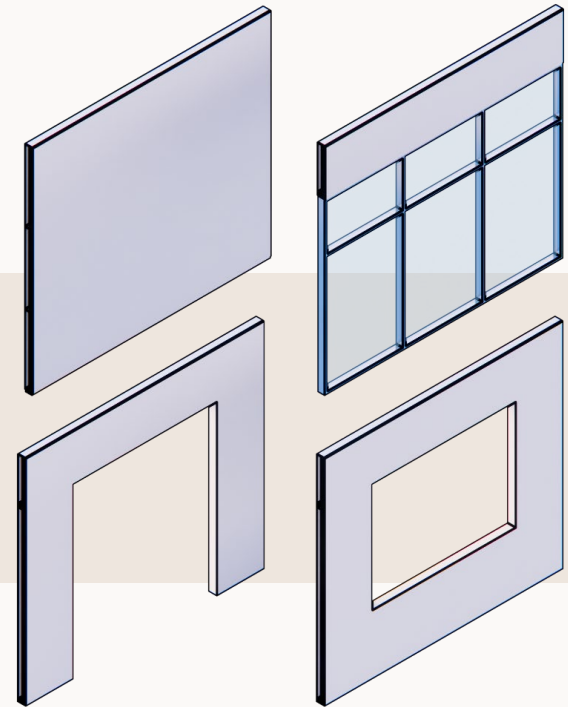
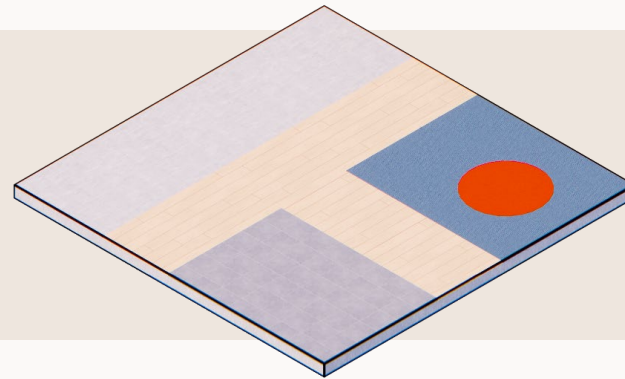
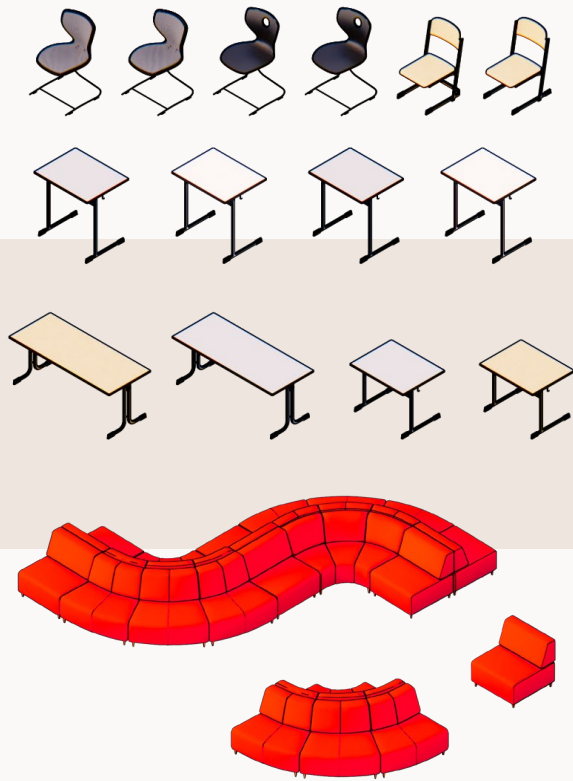
Exclusive



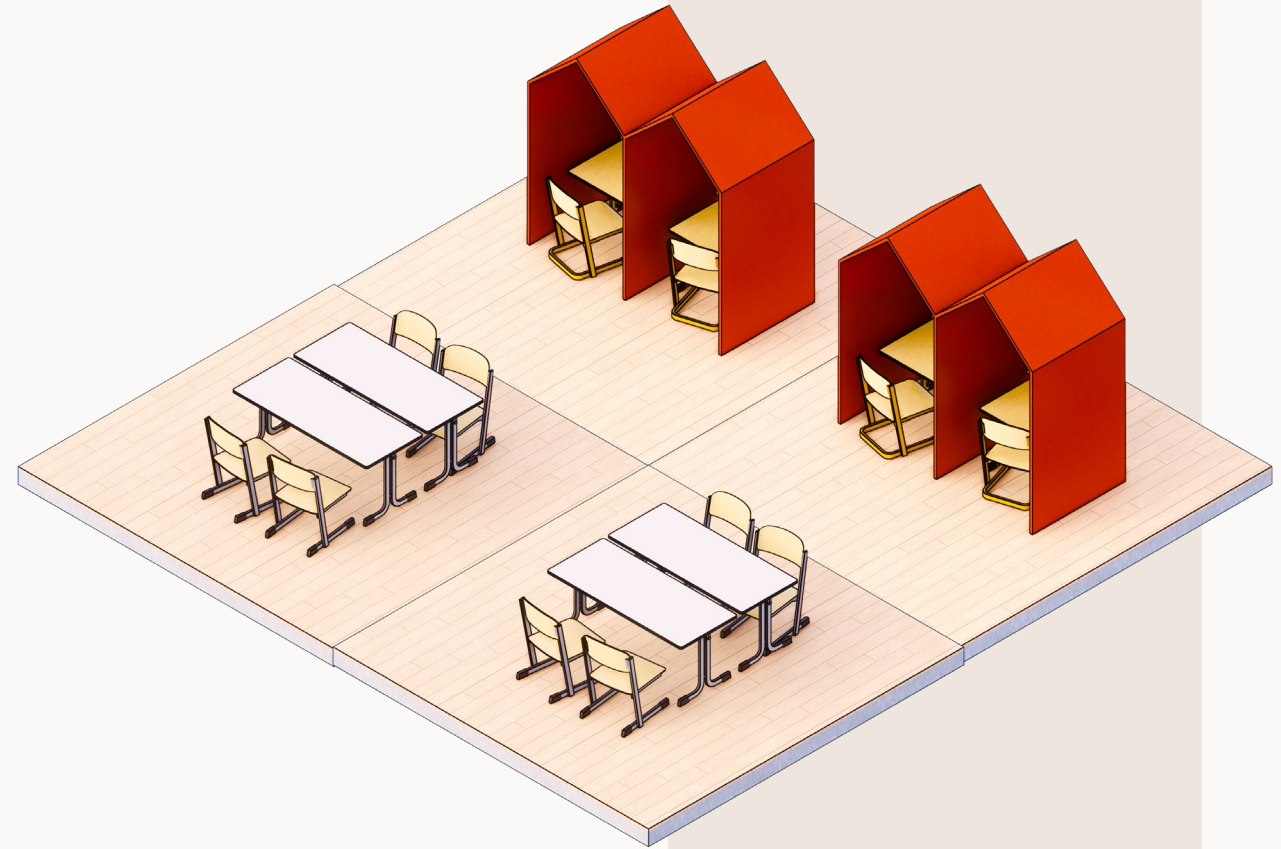
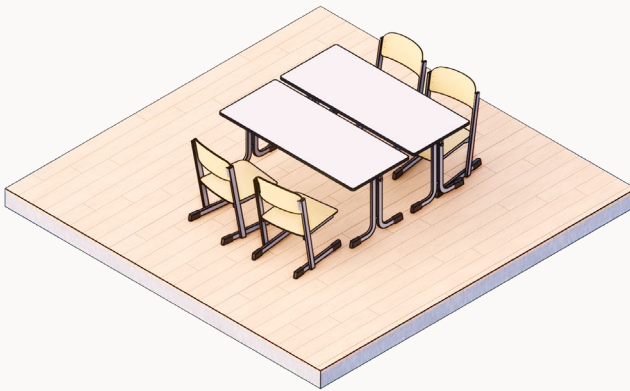
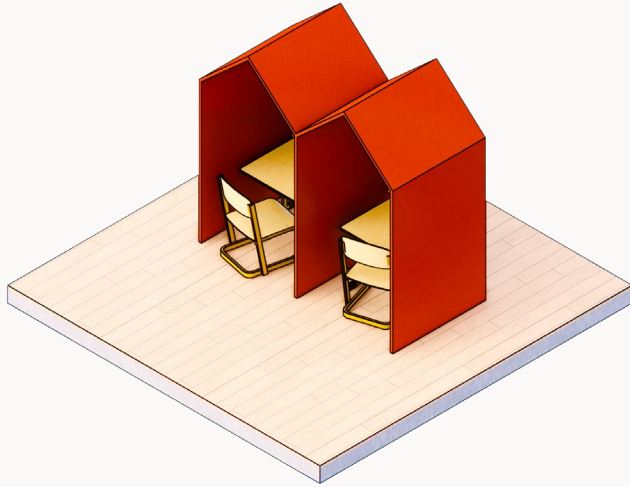
Circulation

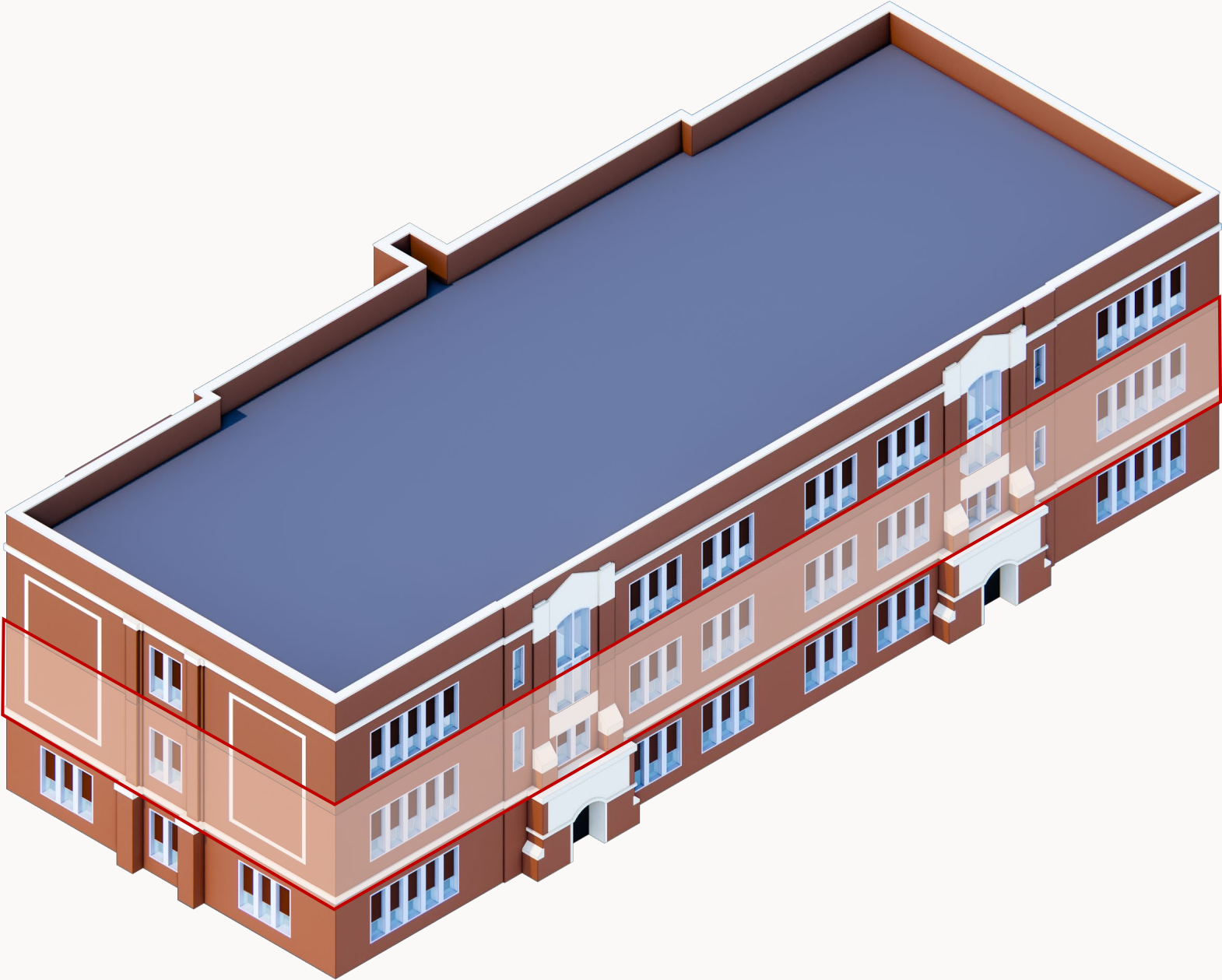


# Kit of Parts



# Kit of Parts



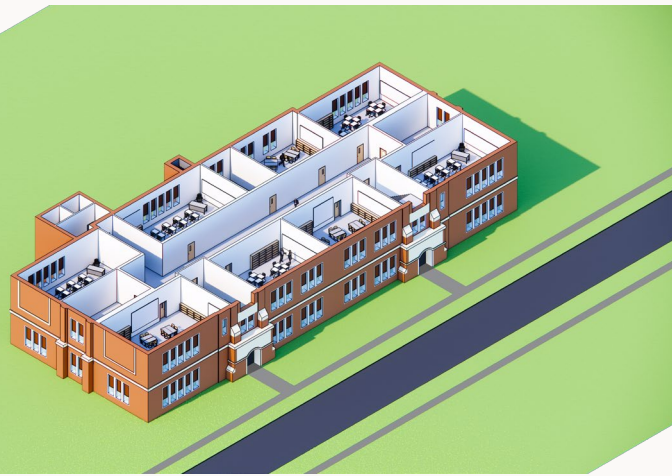








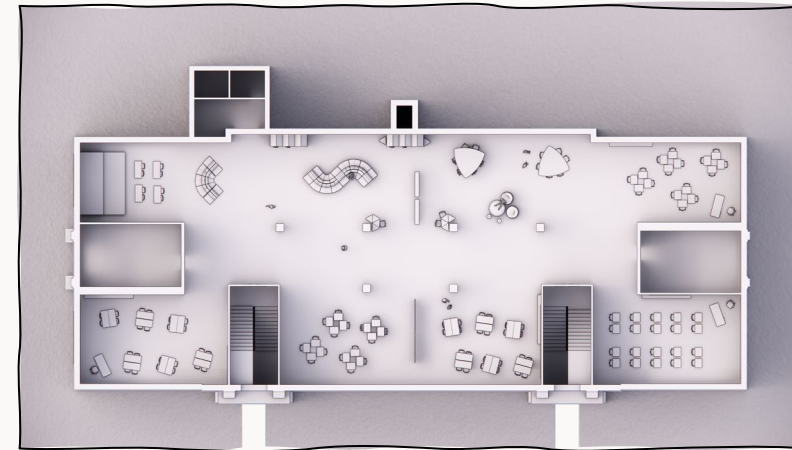
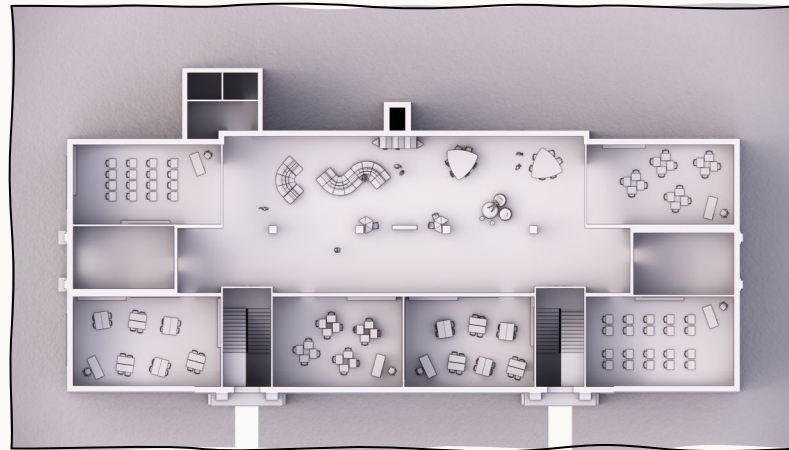
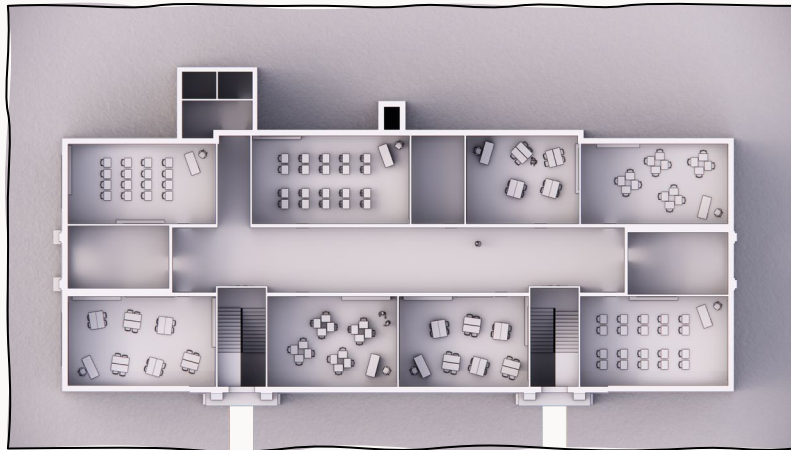
Original



Semi-Open



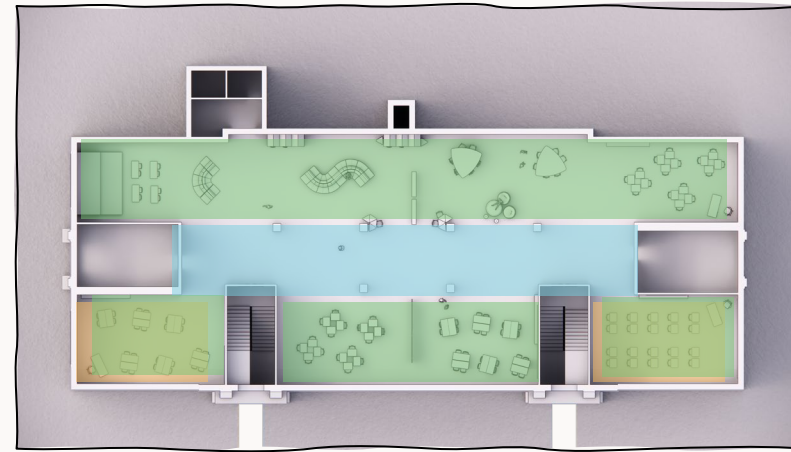
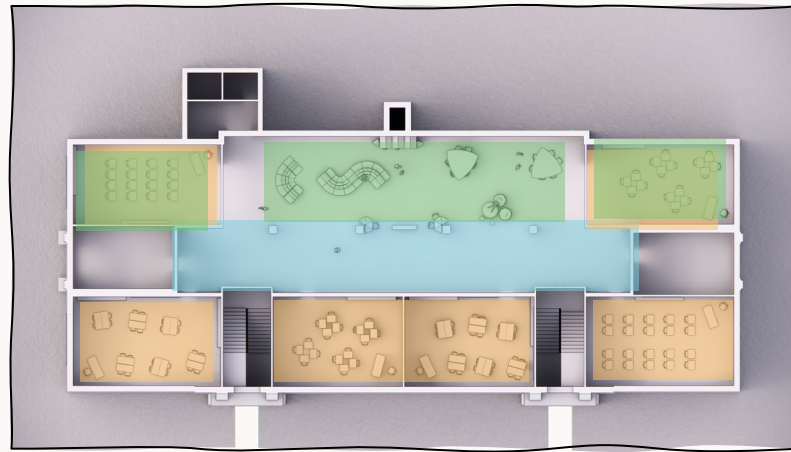
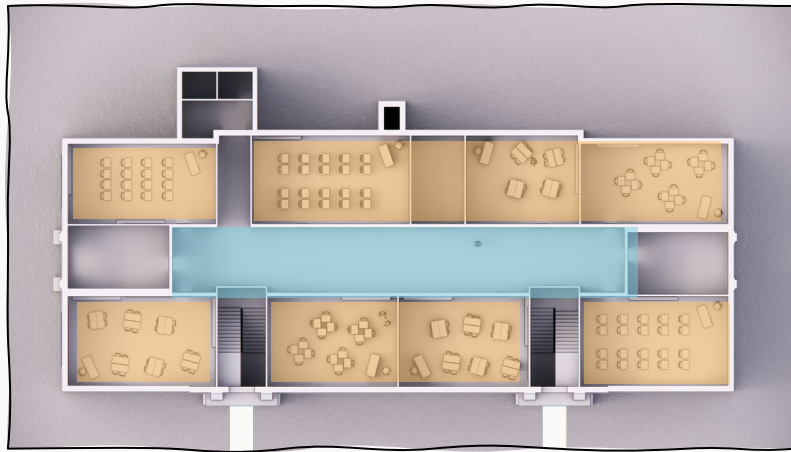
Open



Original

Semi-Open

Open



■ Inclusive

■ Exclusive

■ Circulation

Original



Semi-Open



Open

