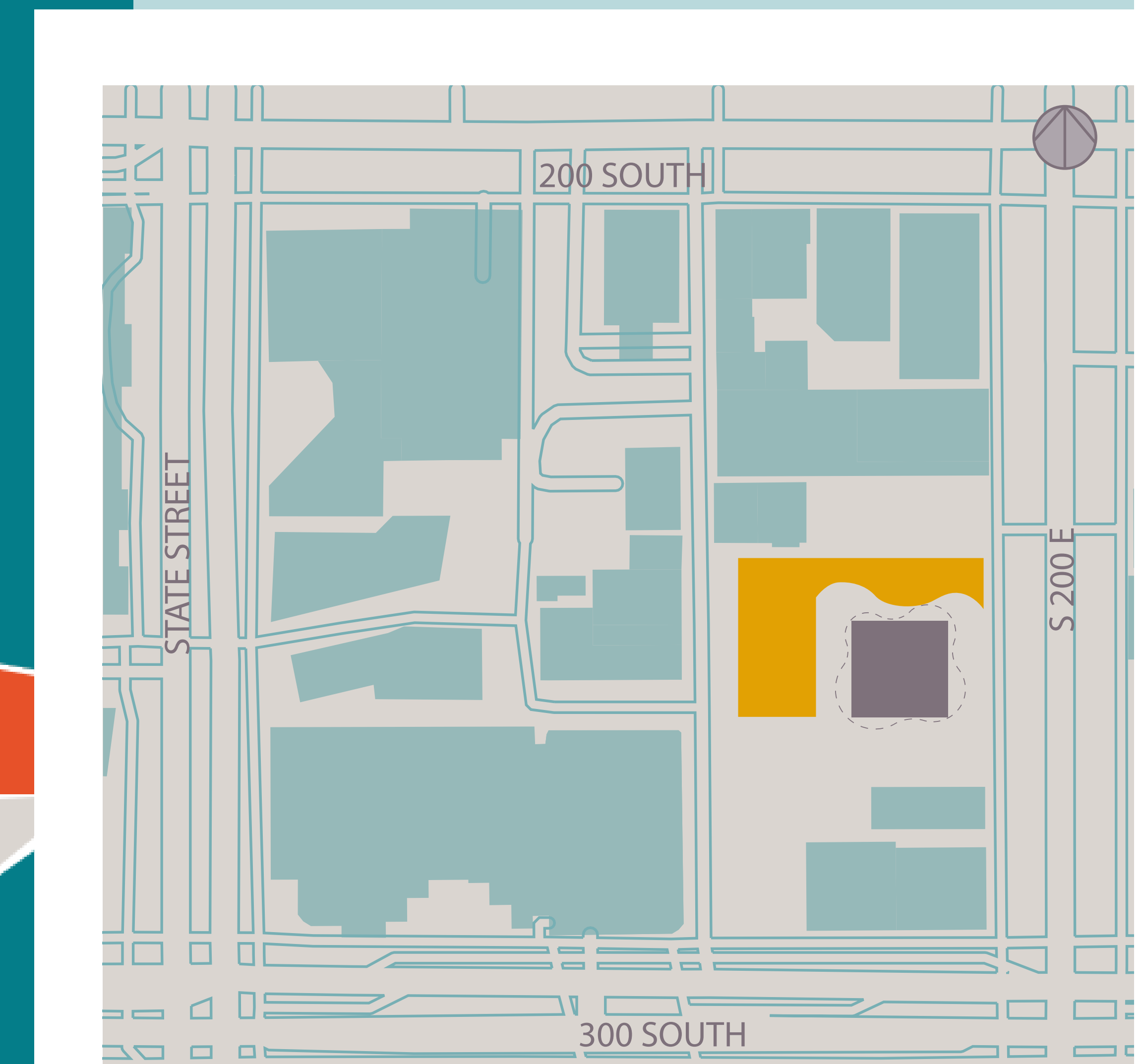
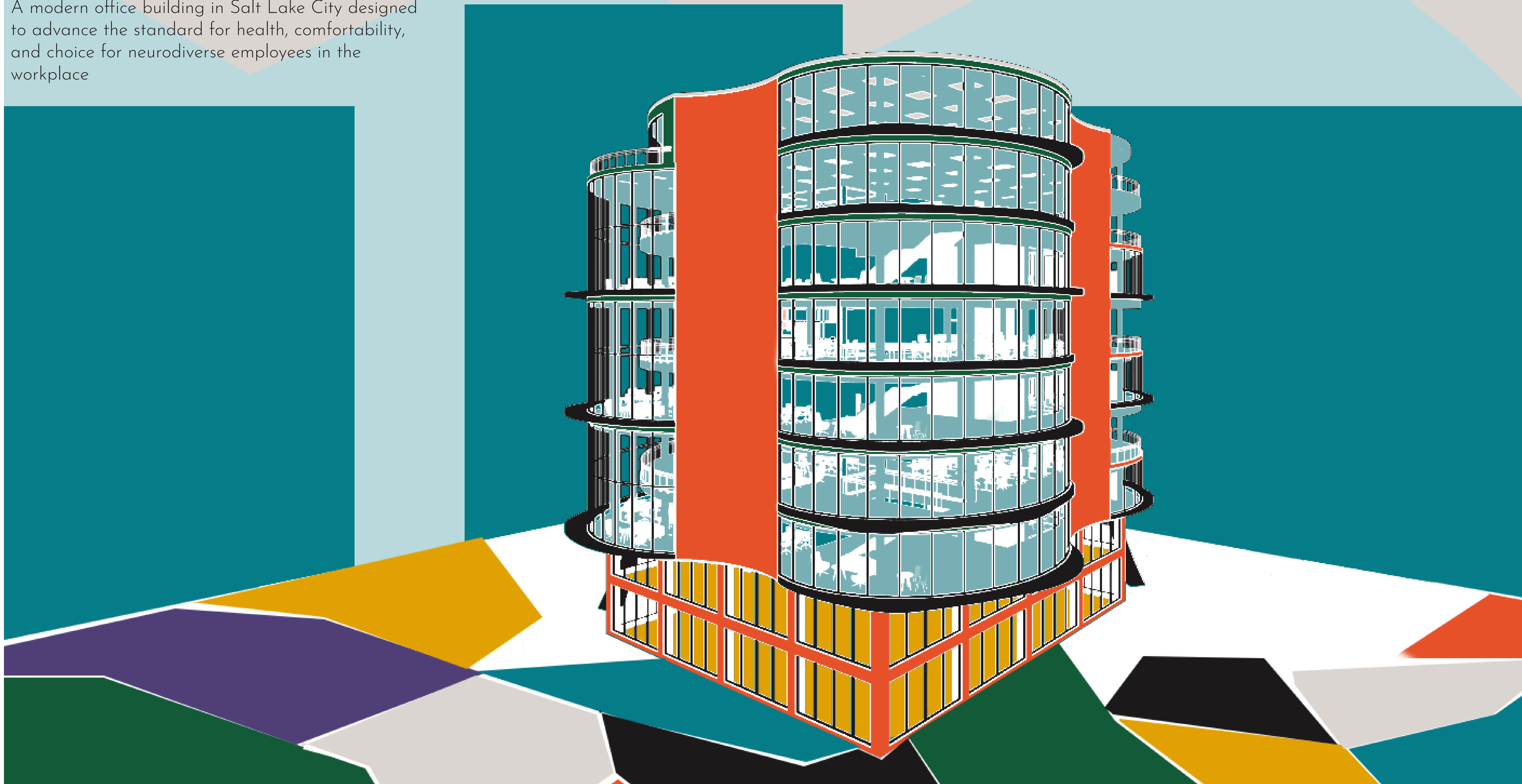


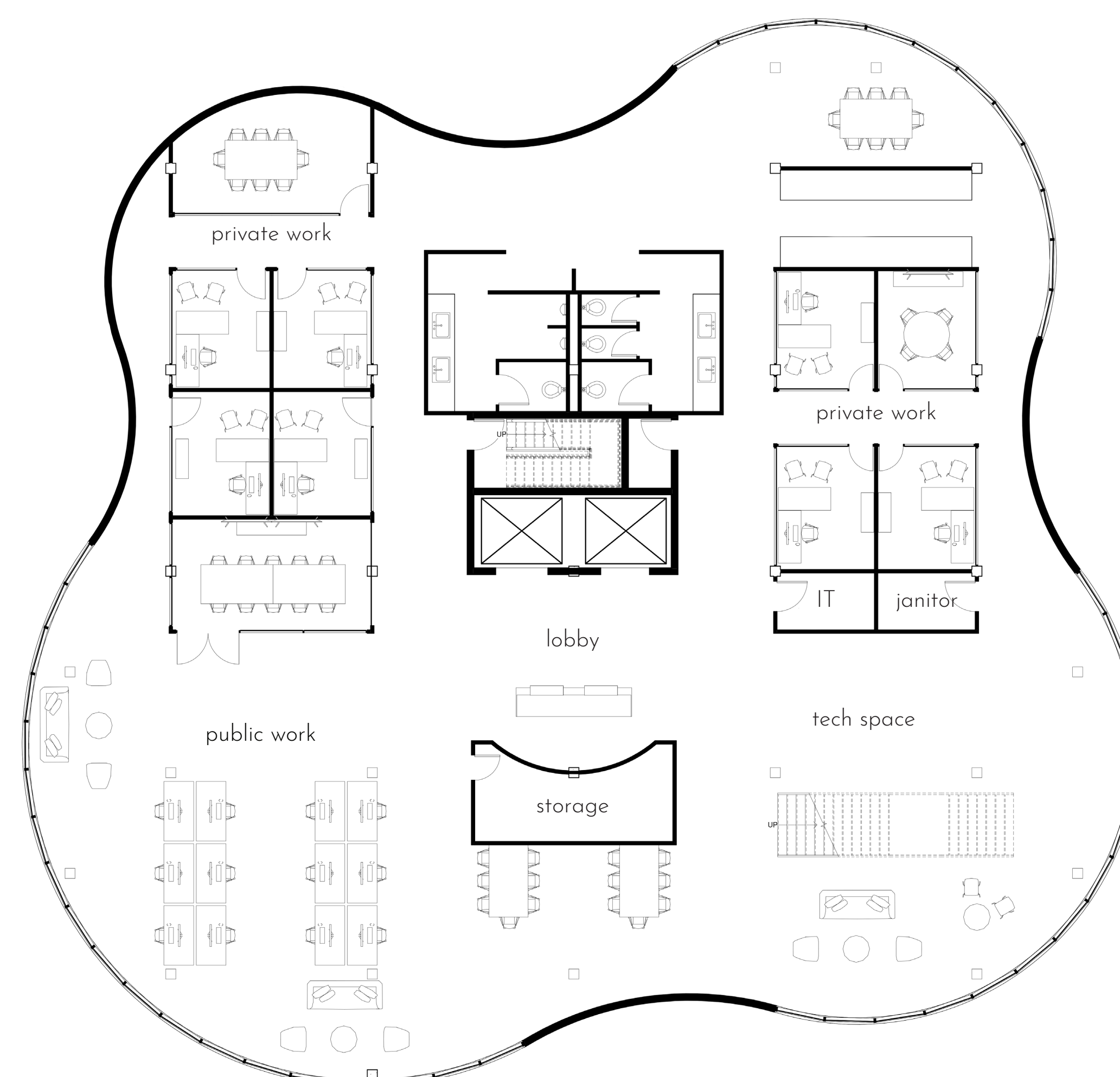
INCLUSIVE ARCHITECTURE

A modern office building in Salt Lake City designed to advance the standard for health, comfortability, and choice for neurodiverse employees in the workplace

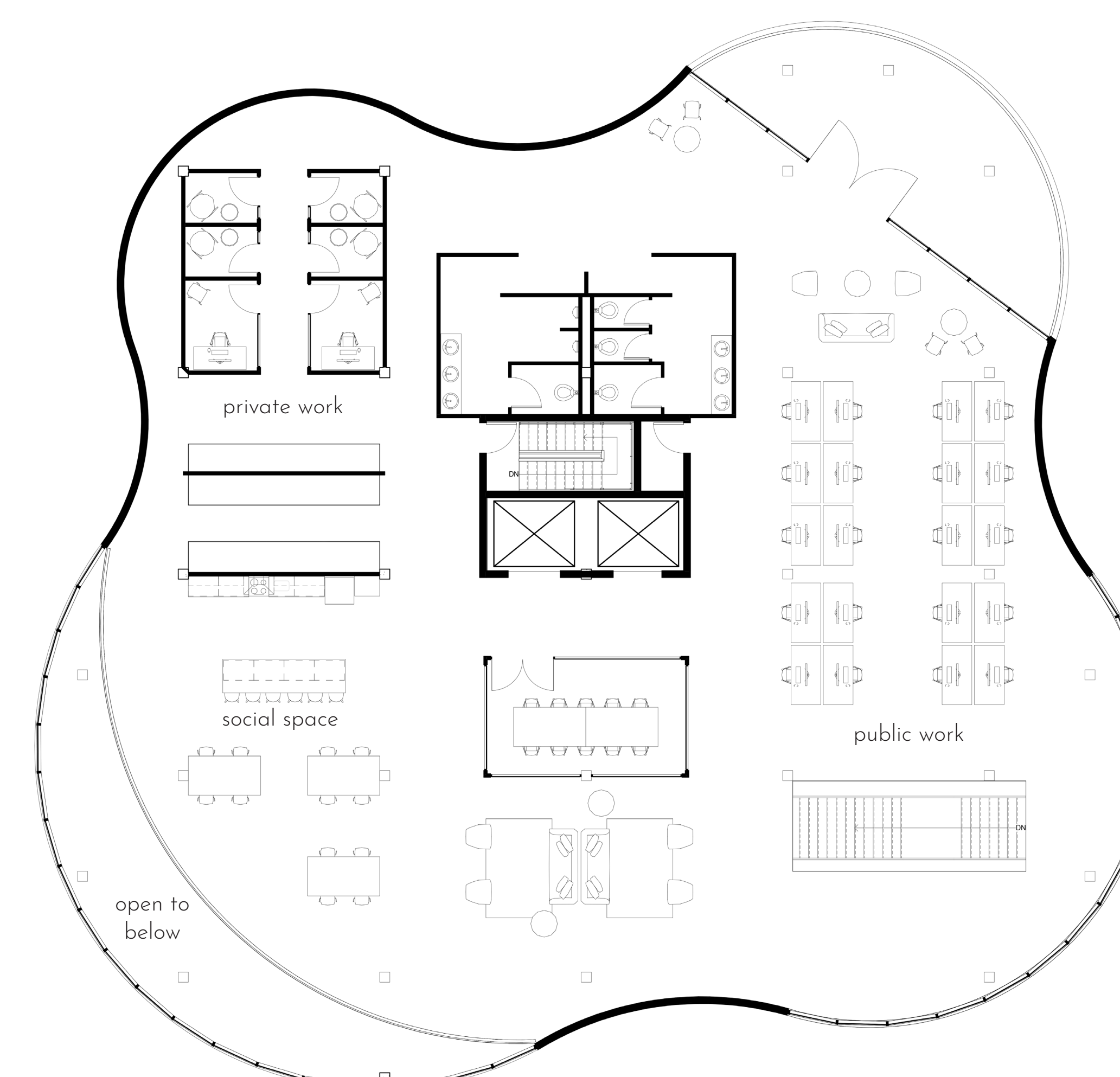


The building consists of one level of underground parking including with bicycle storage, two levels of commercial retail space, three two-level private offices and a public top floor with community amenities. Facilities on the ninth floor include an on site fitness facility, a communal kitchen and open space for events and gatherings. As part of a commitment for tenants to feel safer and healthier, a sunken garden connects the lower level parking with the outdoors.

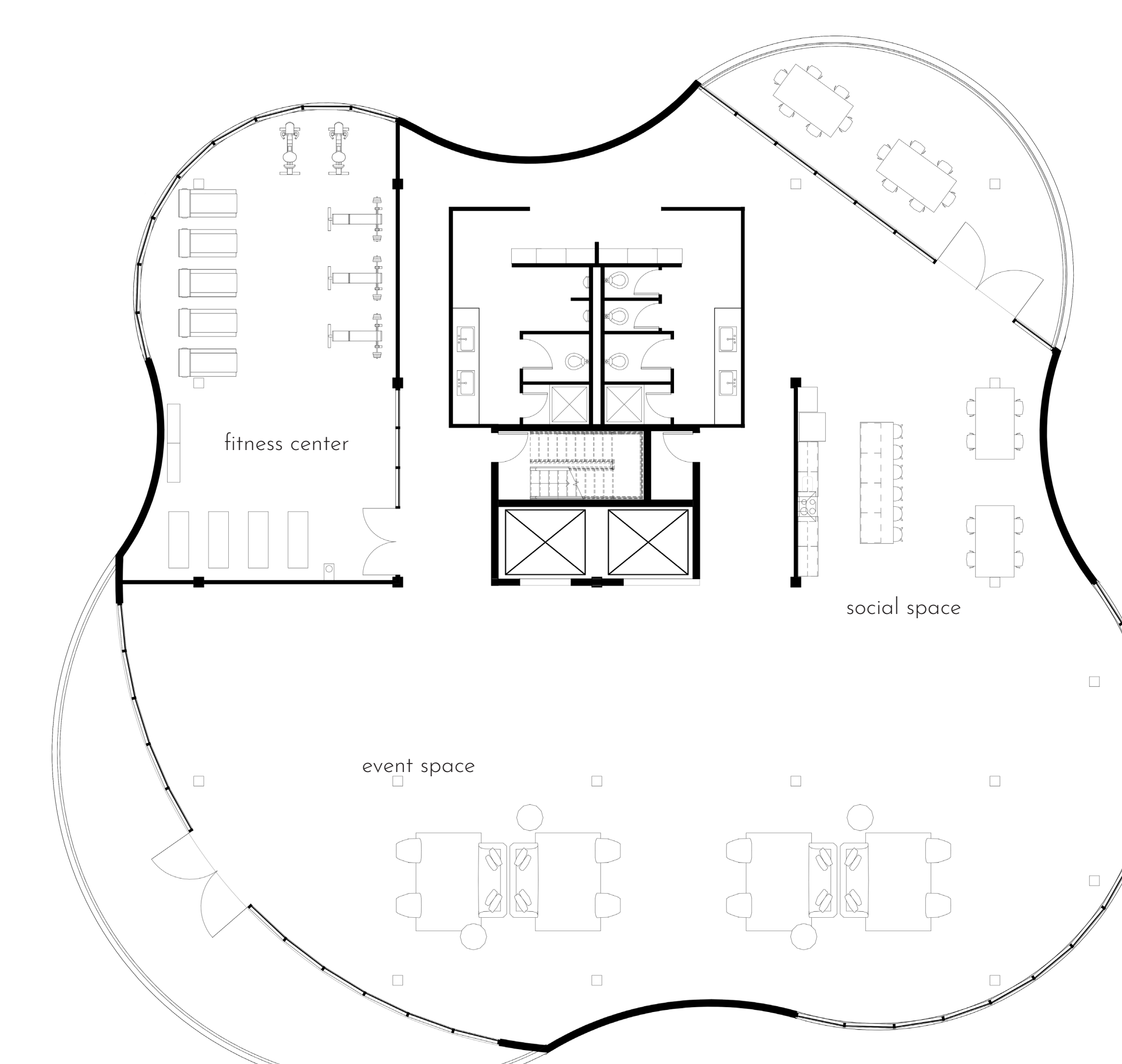
Each office level is designed to engage employees with an environment that supports and values overall health and their connection to the outdoors. This mixed-use approach provides highly flexible work spaces suitable for an array of industries and are adjustable to fluctuations in demand for shared and individual workplaces. Employees receive memorable experiences, convenient amenities and community connectivity throughout the building.



levels 3, 5, 7

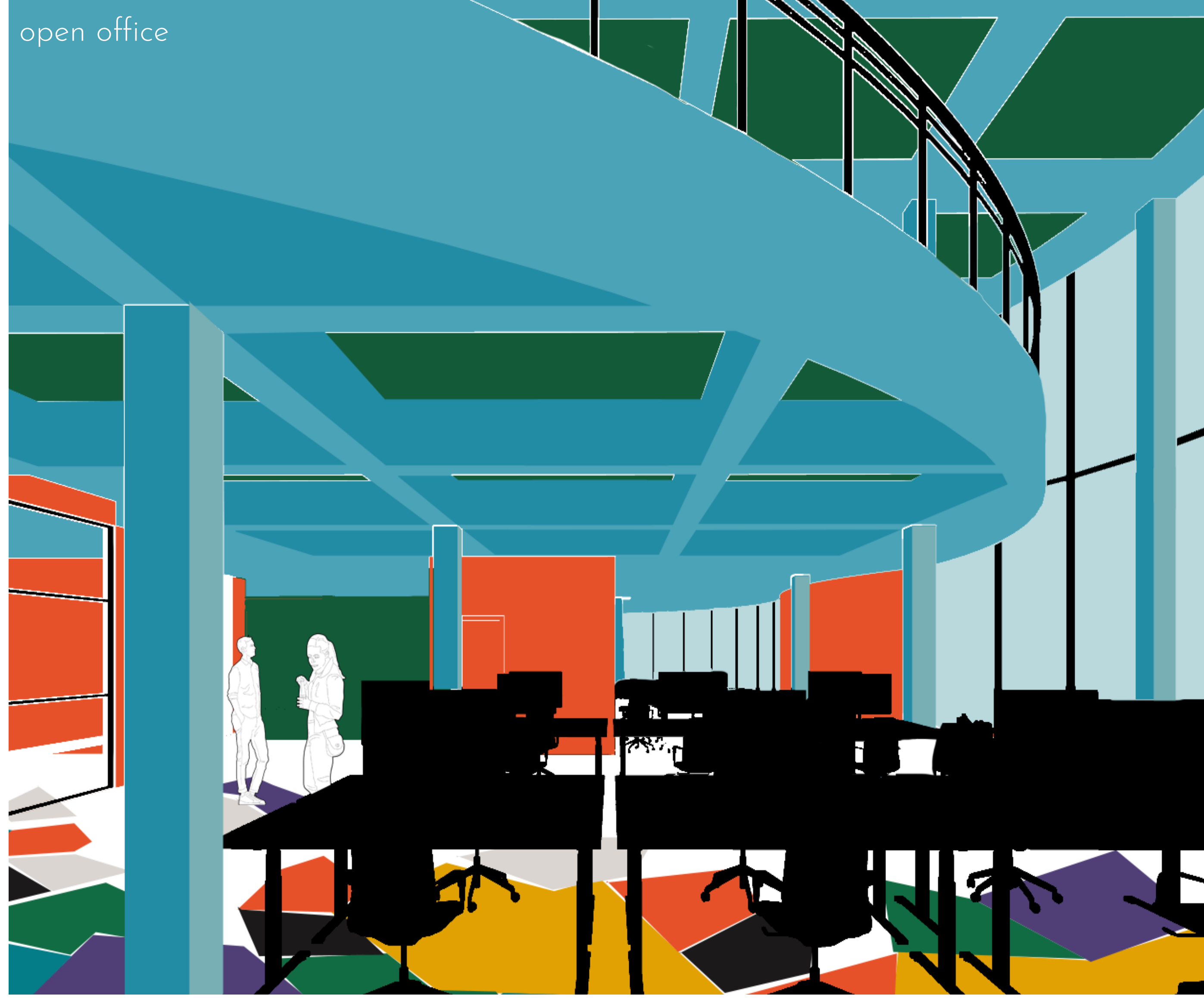


levels 4, 6, 8



levels 9

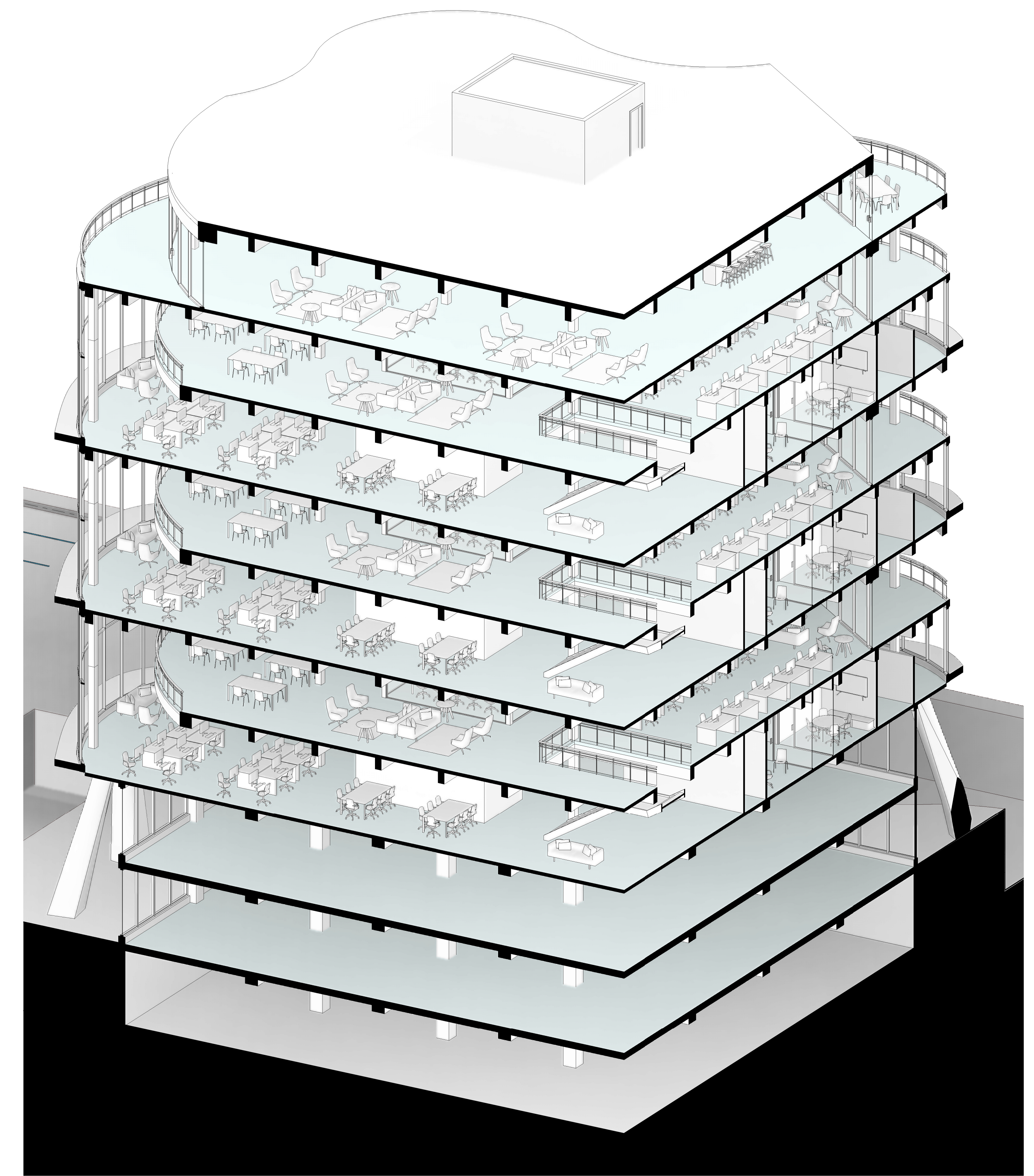
open office



kitchen mezzanine

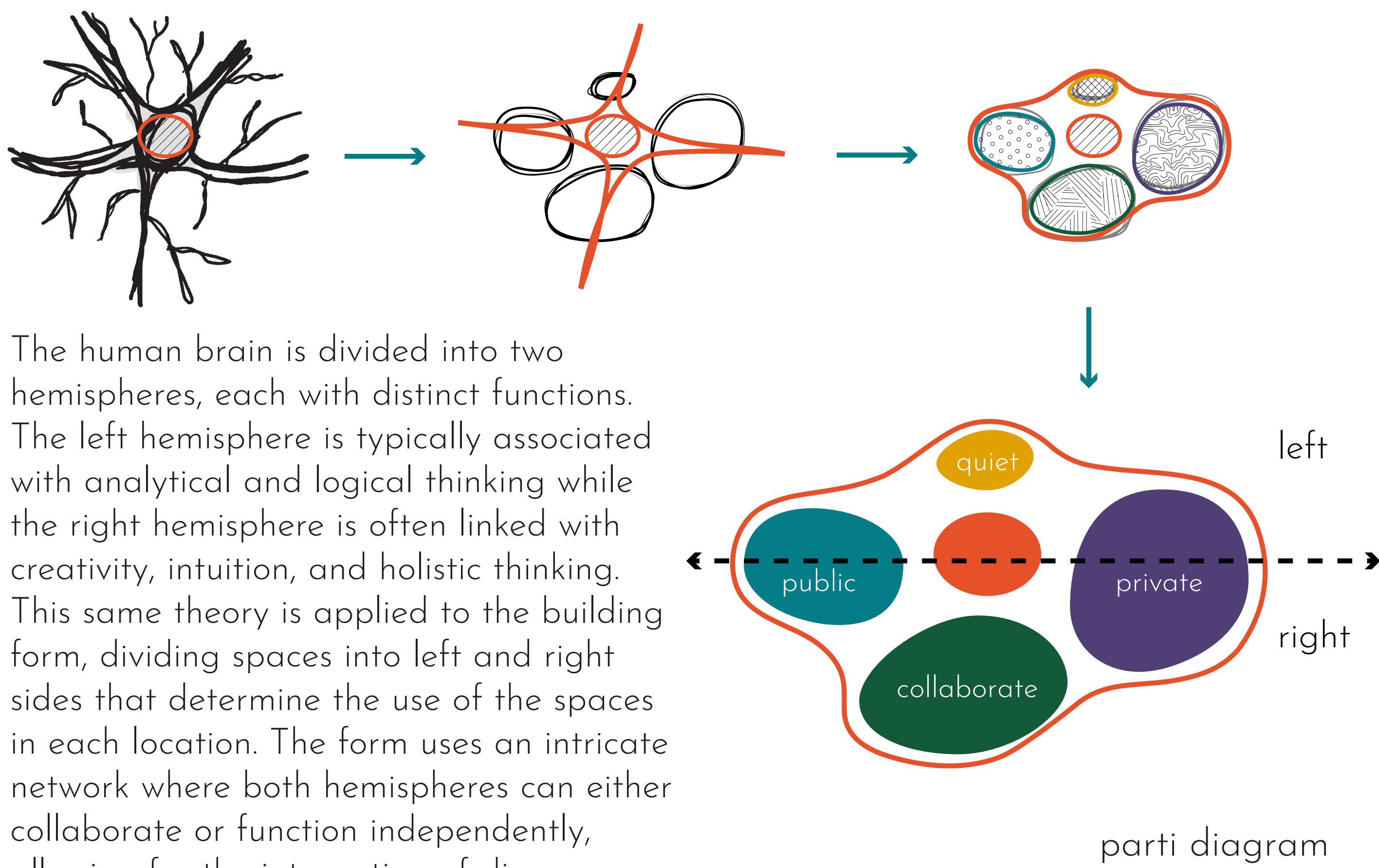


sunken garden



When most people think of inclusive design, they think of those with physical disabilities. As architects, we strive to create inclusive spaces that can be experienced the same no matter if someone is differently-abled, but what about those that have neurological disabilities that are not seen as obviously or as often?

This project expands the typical understanding of what an inclusive workplace should look like by implementing the idea that the key to success is to focus the human experience. This hospitality-oriented office provides an opportunity to personalize the journey people take throughout the workday. Expanding the range of available accommodations offered in an office setting helps create a closer community and find employees with a greater range of diverse skills.



The human brain is divided into two hemispheres, each with distinct functions. The left hemisphere is typically associated with analytical and logical thinking while the right hemisphere is often linked with creativity, intuition, and holistic thinking. This same theory is applied to the building form, dividing spaces into left and right sides that determine the use of the spaces in each location. The form uses an intricate network where both hemispheres can either collaborate or function independently, allowing for the integration of diverse cognitive abilities.

parti diagram

scale 3/16" = 1'



east elevation

south elevation

west elevation

north elevation