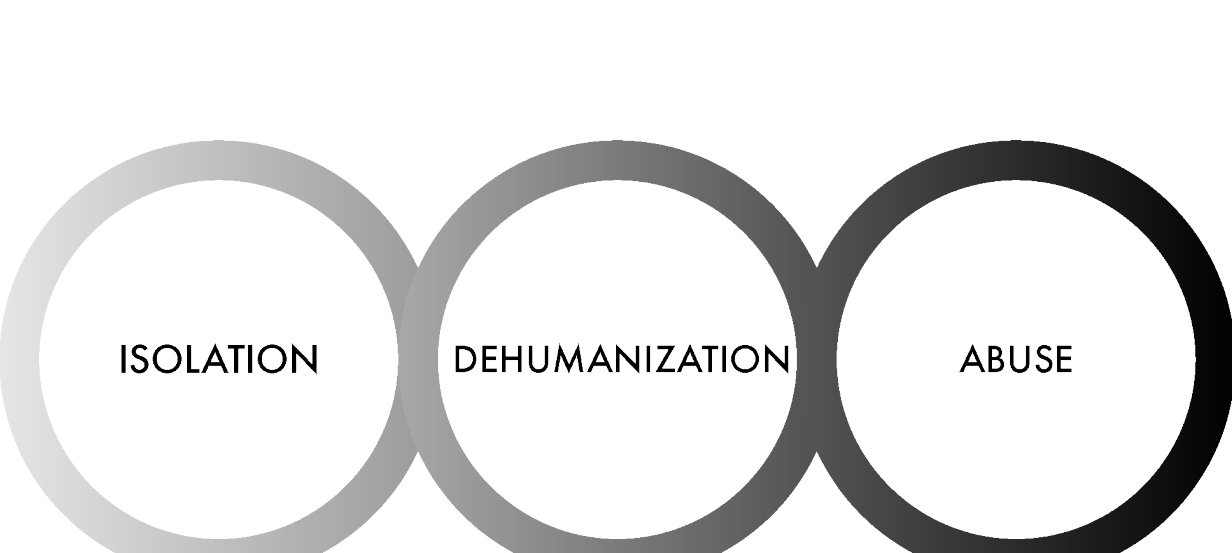




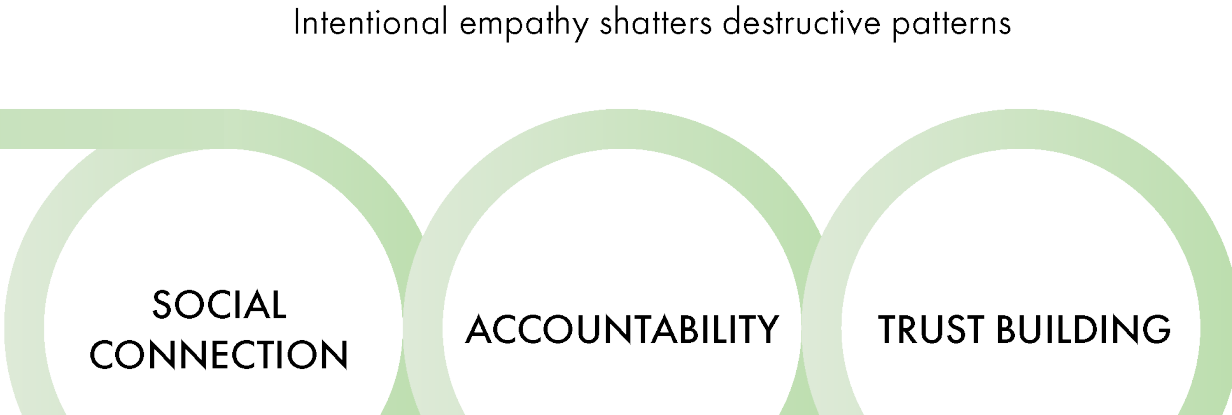
The significance of the relationship between urban communities and law enforcement cannot be overstated, as it directly impacts both the effectiveness of the police and overall safety of the public. In recent years, this relationship has garnered increased scrutiny due to repeated incidents of police brutality, sparking widespread discussion on the role that police play within society as well as necessary police reforms. Despite these discussions taking place, little attention has been given to the architecture that houses the police. The police station is a staple of civic architecture and serves as primary point of interaction through which the public perceives the police as an institution. By reimagining the police station as a tool for making connection and building real trust, this thesis aims push the model of what a police station can be.



Breaking the cycle begins with recognizing the progression.

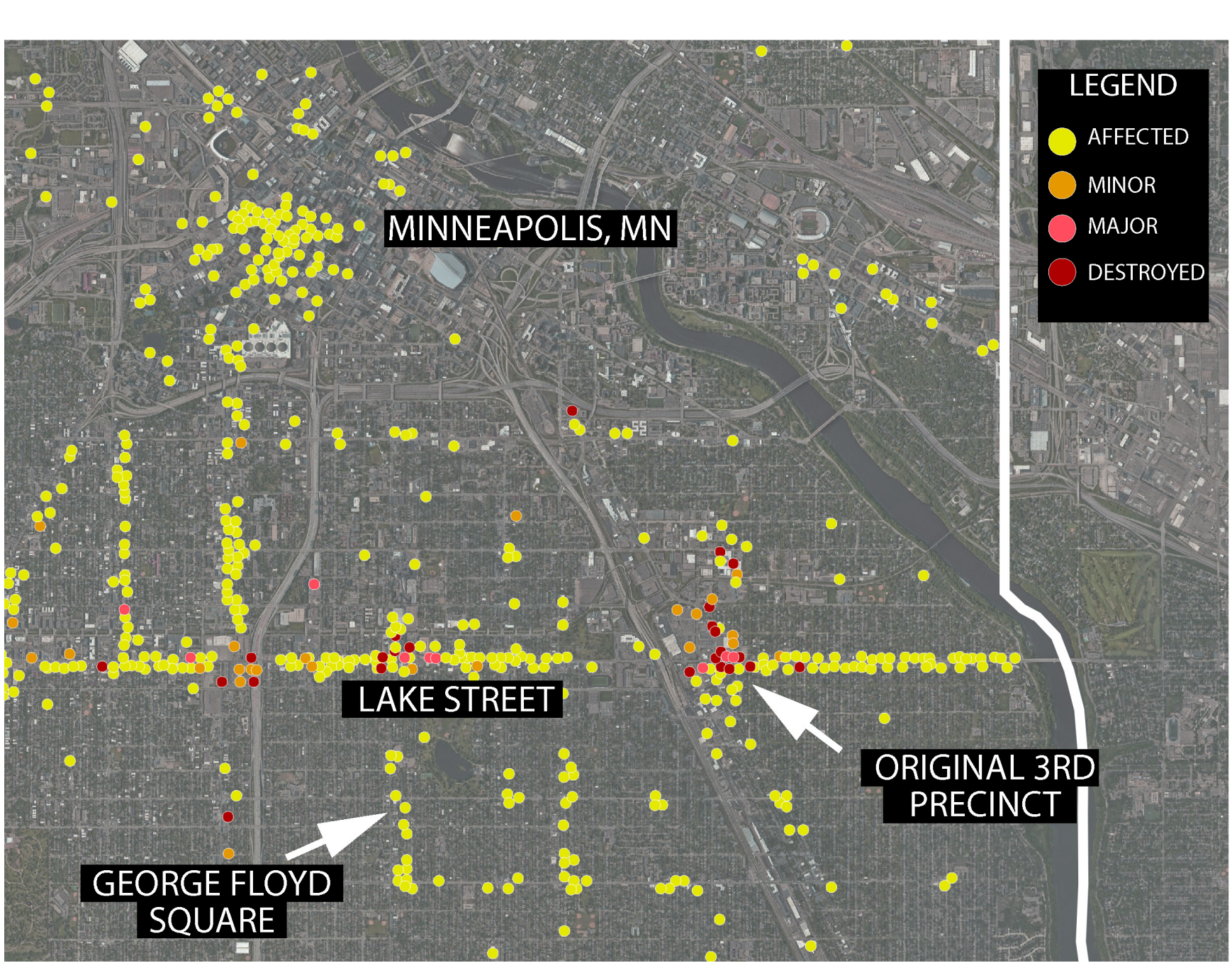


Intentional empathy shatters destructive patterns



Building bridges fosters safety and community resilience."

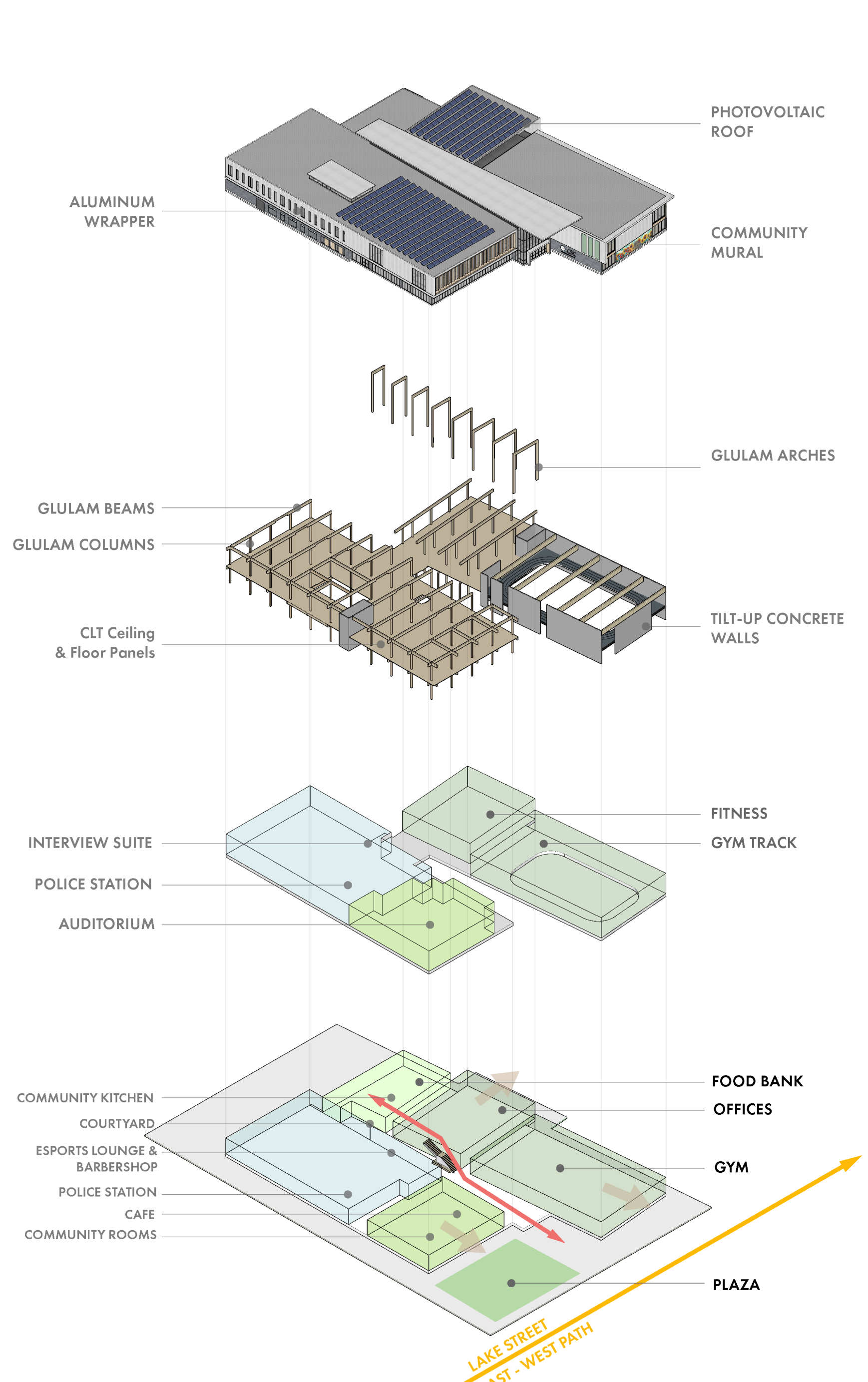
Over the past decade, national trust in the police has steadily eroded, largely fueled by public outrage over repeated instances of police brutality. The tragic death of George Floyd in 2020 served as a catalyst for nationwide protests, some escalating to violence, with Minneapolis bearing significant damage. One of the most pivotal moments during the unrest was the abandonment and subsequent looting and burning of the Minneapolis Police Department's Third Precinct Building.



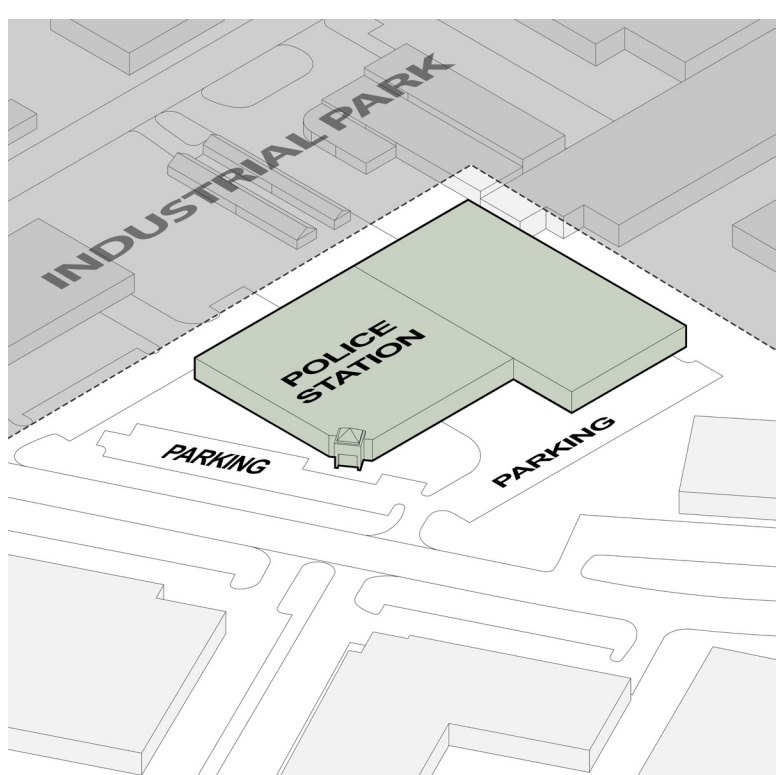
Lake Street in South Minneapolis bore the brunt of the unrest following the tragic death of George Floyd, experiencing the most severe damage. The total damages exceeded well over \$500 million. Historically, Lake Street's neighborhoods have been characterized by a significant immigrant population and numerous small businesses. Many of these businesses were damaged during the unrest.

The police station plays a crucial role in shaping community perceptions of law enforcement as well as fostering positive police-community relations. Through intentional placement of police stations within communities, embracing mixed-use typologies, and crafting welcoming environments that promote relaxed interactions between law enforcement and the public, opportunities emerge to strengthen trust and cultivate meaningful relationships.

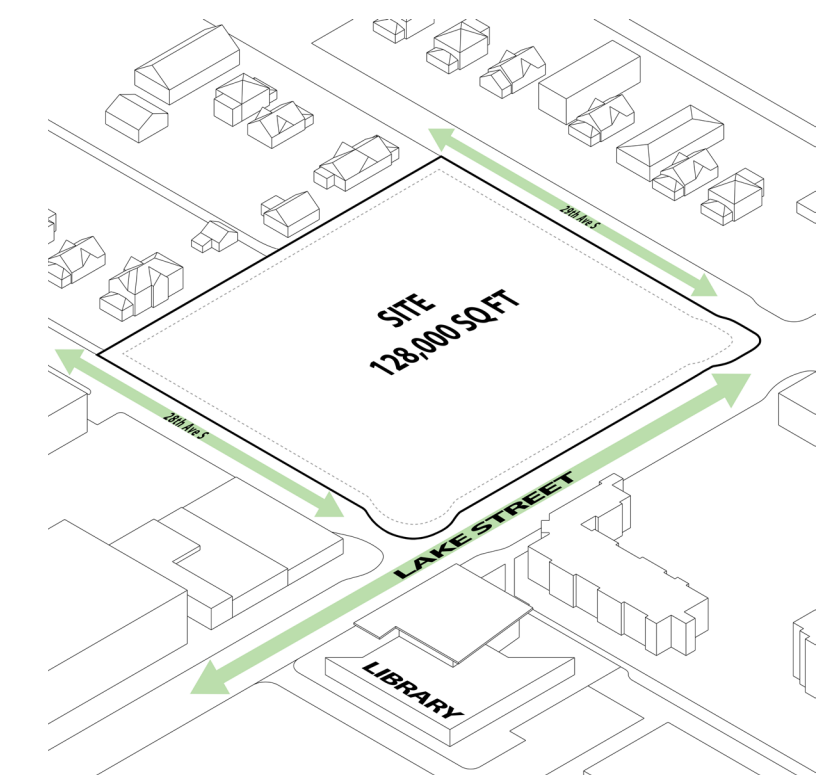
This thesis seeks to shed light on the often neglected role of architecture in shaping perceptions of law enforcement. Through insightful analysis and innovative design proposals, it aims to offer valuable insights into how thoughtful architectural interventions can support positive police-community relations and contribute to building safer, more inclusive communities.



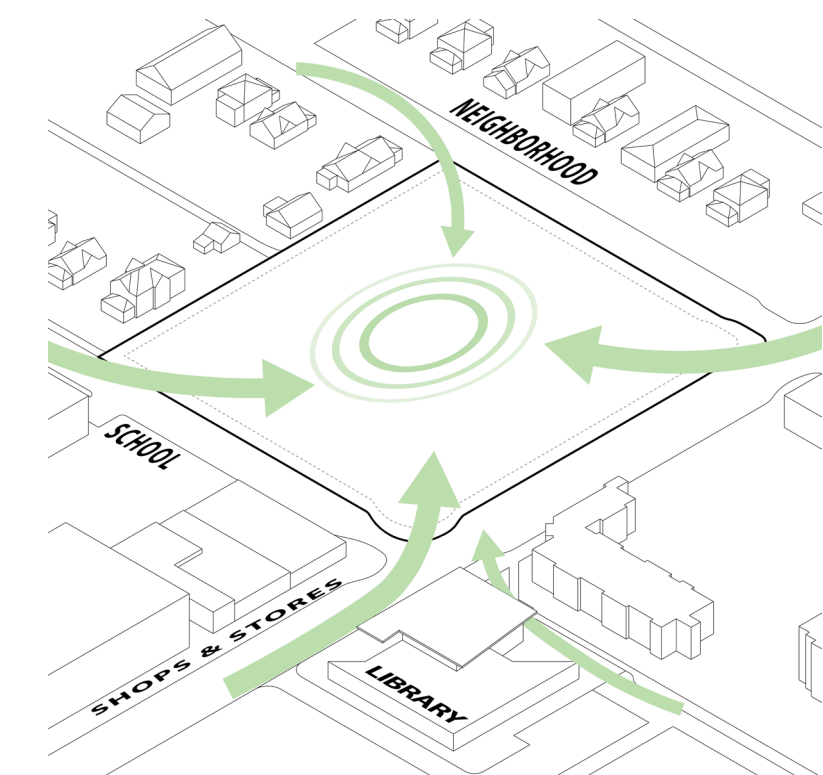
reIMAGINING THE POLICE STATION



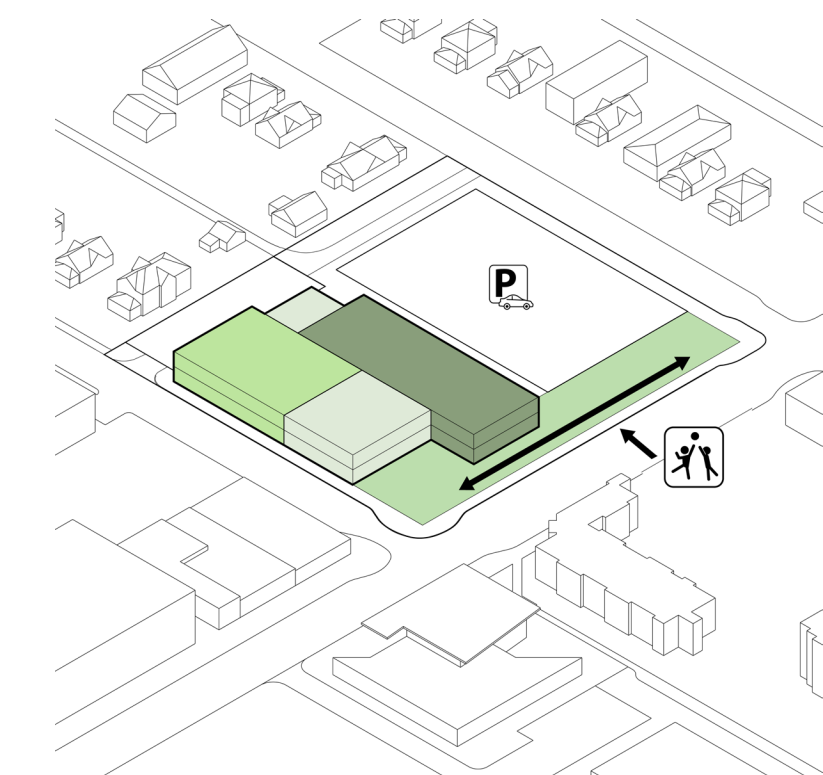
1. TYPICAL POLICE STATION
The prevailing model of police stations prioritizes vehicular access and proximity to roadways over integration with the surrounding community.



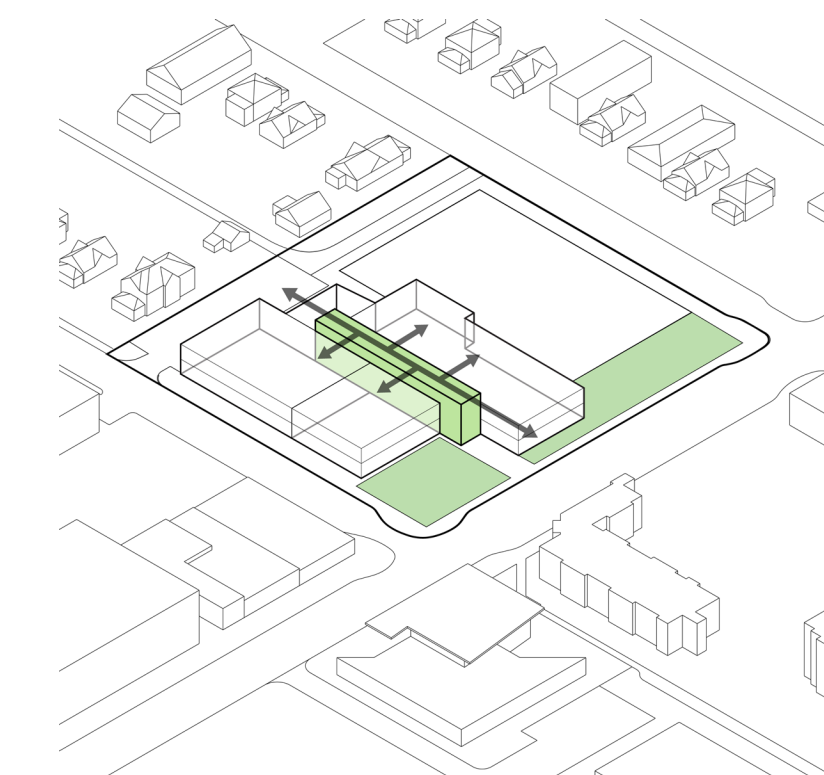
2. PROPOSED SITE
The proposed site is situated along Lake Street in South Minneapolis, surrounded by local shops, with the public library located just across the street.



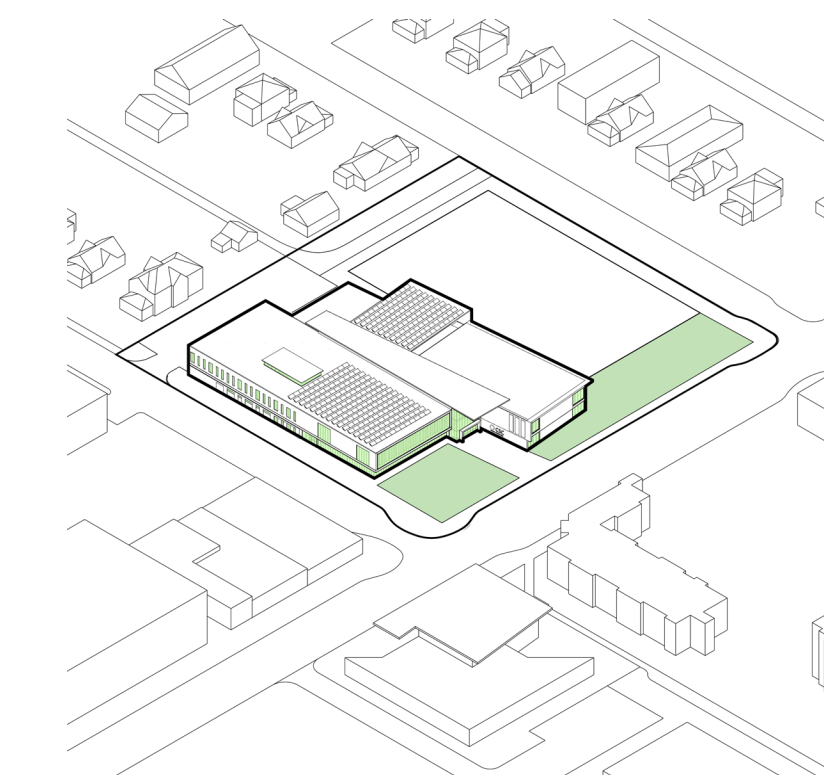
3. SITE RELATIONSHIPS
Sited at a transitional point, the site acts as a link between civic, commercial, and residential nodes.



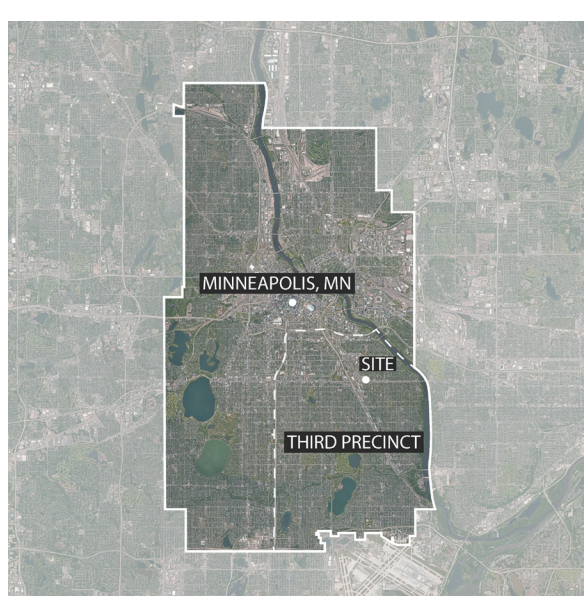
4. BASIC SITE OBJECTIVE
Different functions and spaces are positioned within the building, promoting a mixed-use community center. Public green space is oriented towards Lake Street.



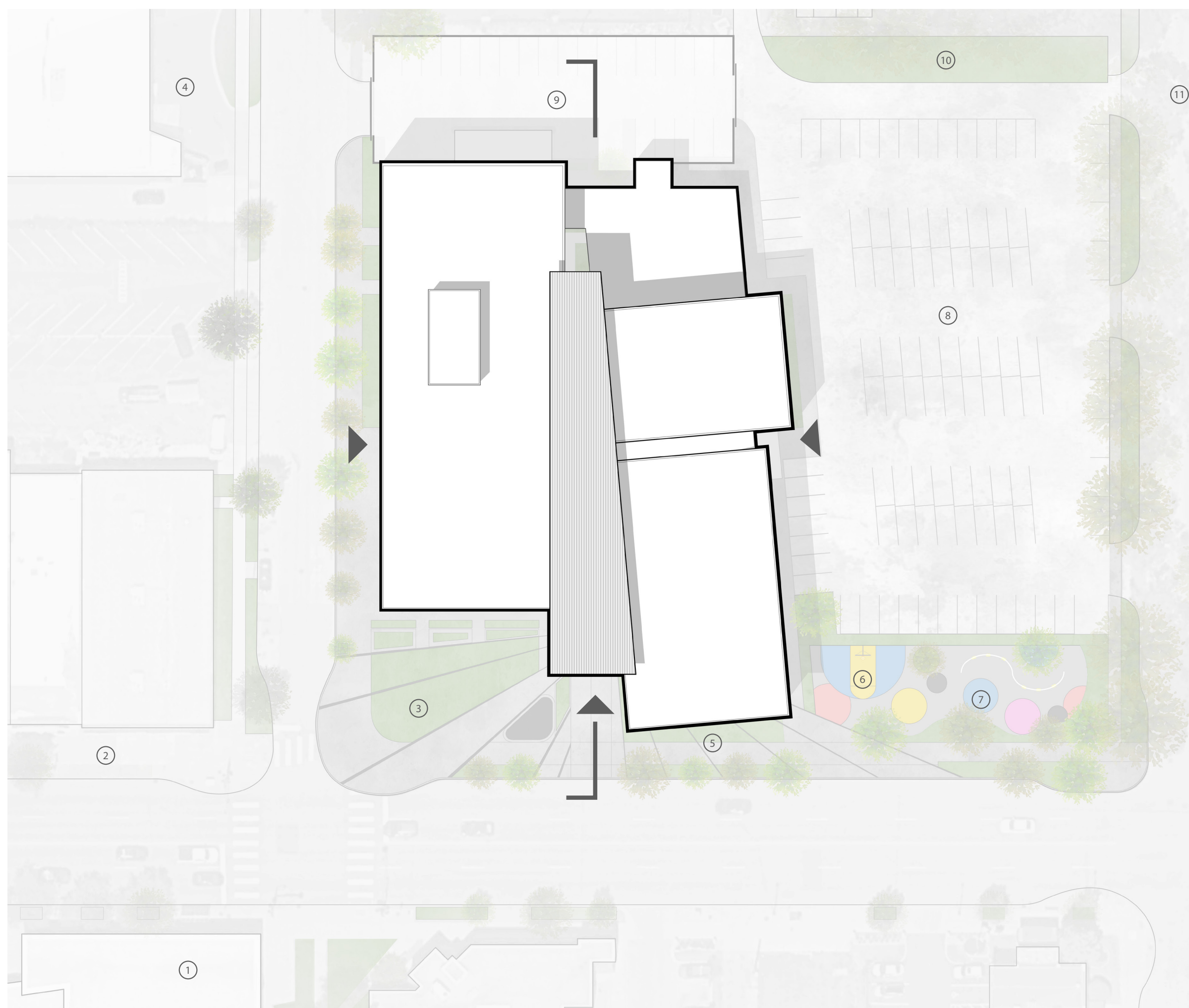
5. CREATING CONNECTIONS
A welcoming control corridor connects the various spaces, encouraging spontaneous interactions amongst users.



6. ACTIVATE MASS
Facade is activated and windows are strategically placed to overlook the public plazas, encouraging visitors to engage with both indoor and outdoor spaces.

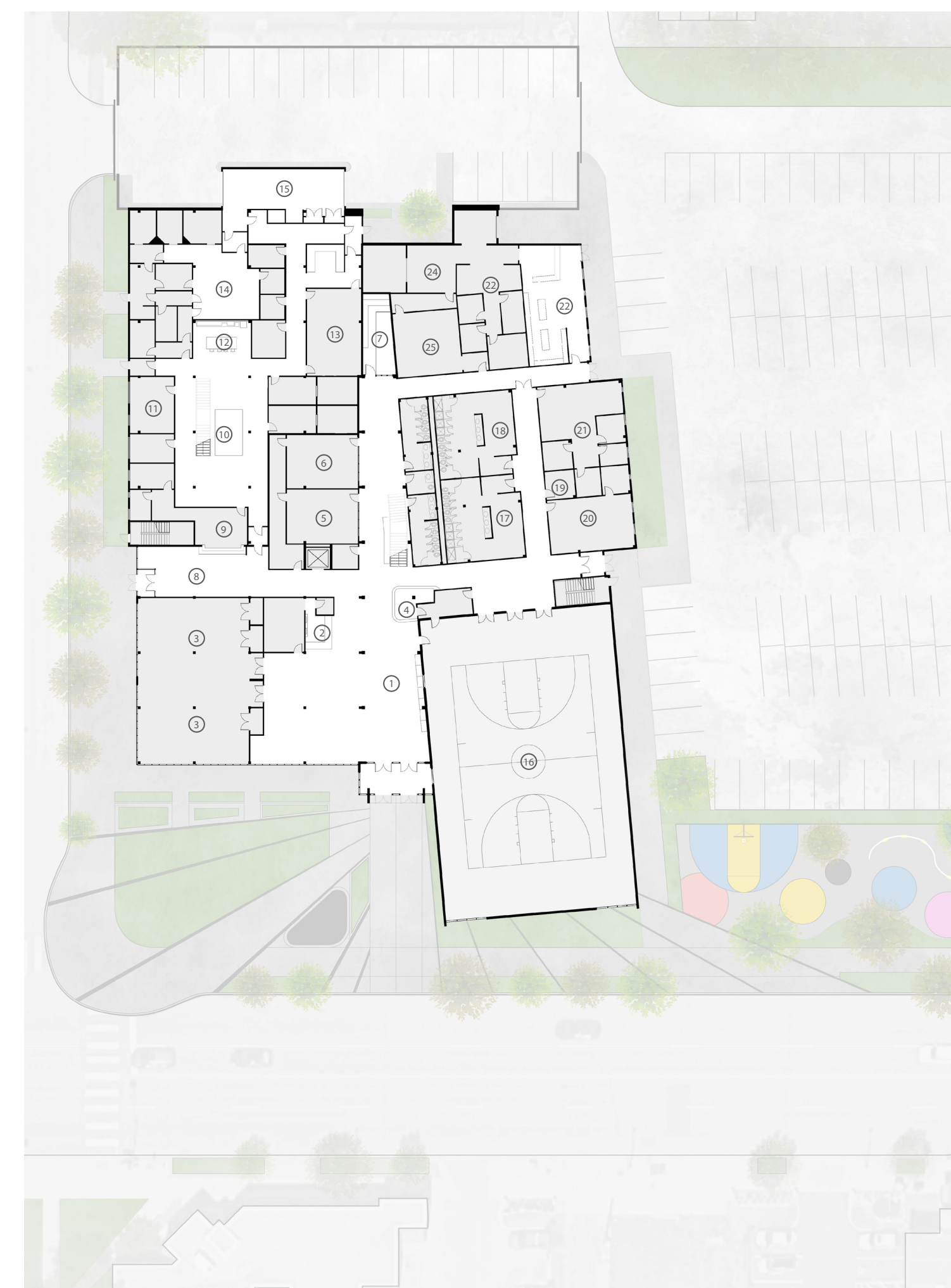
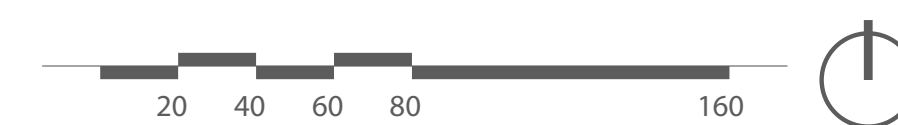


Context



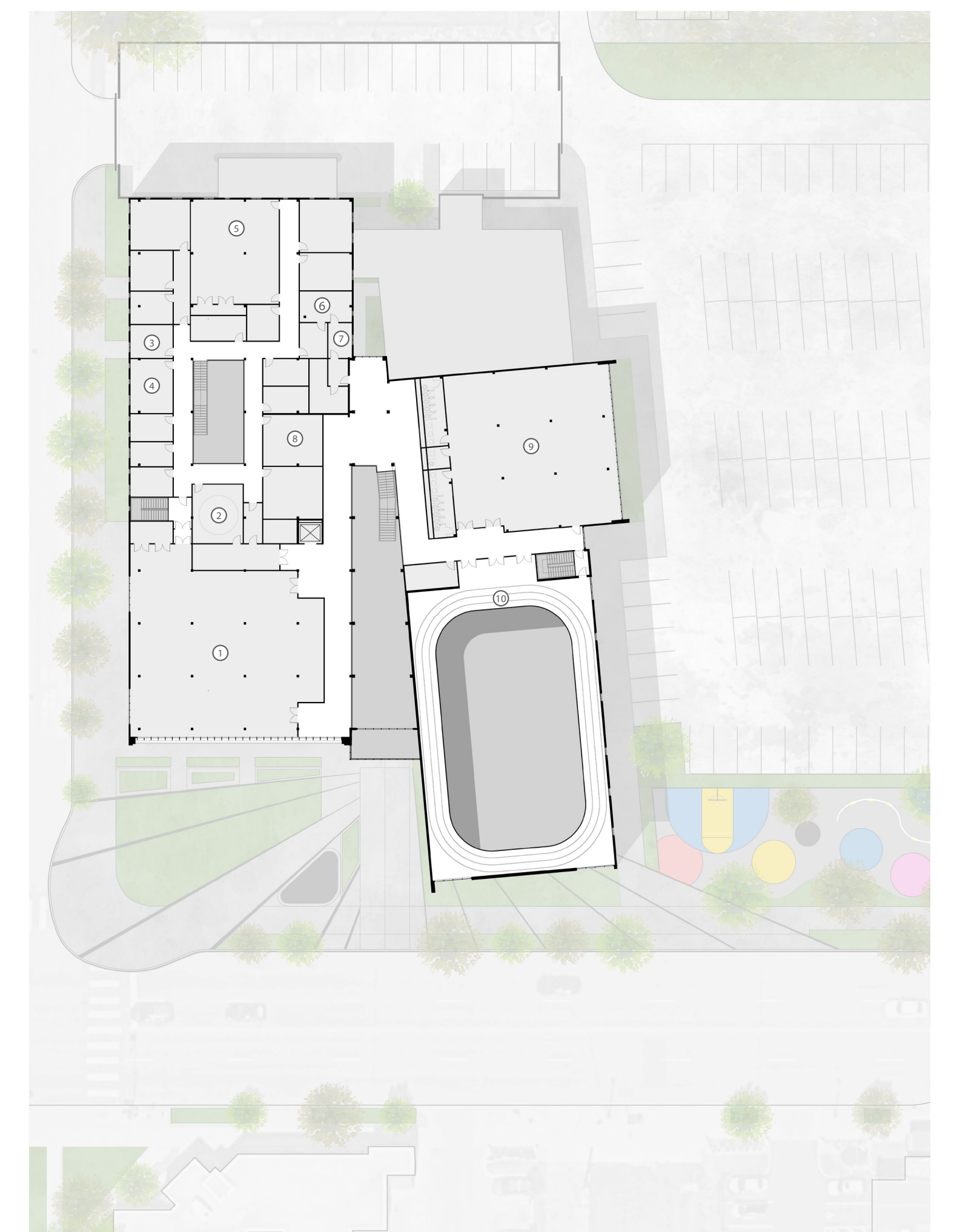
Site Plan

- Public Library
- Lake Street Shops
- Public Plaza
- Charter School
- Community Mural
- Outdoor Basketball Court
- Playground
- Parking
- Secure Police Parking
- Community Gardens
- Residential Neighborhood



First Level Plan

- | | | | |
|---------------------|-----------------|----------------------|-------------------|
| Community | Police | Wellness | Food Bank |
| Corridor Hall | Lobby | Gym | Lobby |
| Cafe | Help Desk | Men's Locker Rooms | Offices |
| Multi-Purpose Rooms | Lounge | Women's Locker Rooms | Storage |
| Help Desk | Offices | Family Locker Rooms | Community Kitchen |
| E-Sports Lounge | Kitchen | Mixed-use Room | |
| Barbershop | Conference Room | Banking/holding | |
| Courtyard | Sally Port | | |



Second Level Plan

- | | | |
|------------------|-------------------------|-----------------|
| Community | Police | Wellness |
| Auditorium | Relaxation Suite | Fitness |
| | Office | Gym Track |
| | Open Offices | |
| | EOC/Training Room | |
| | Investigations Division | |
| | Interview Suite | |
| | Storage | |



West Section

