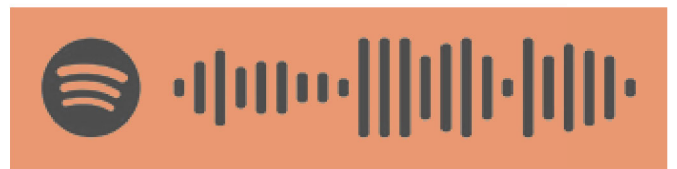


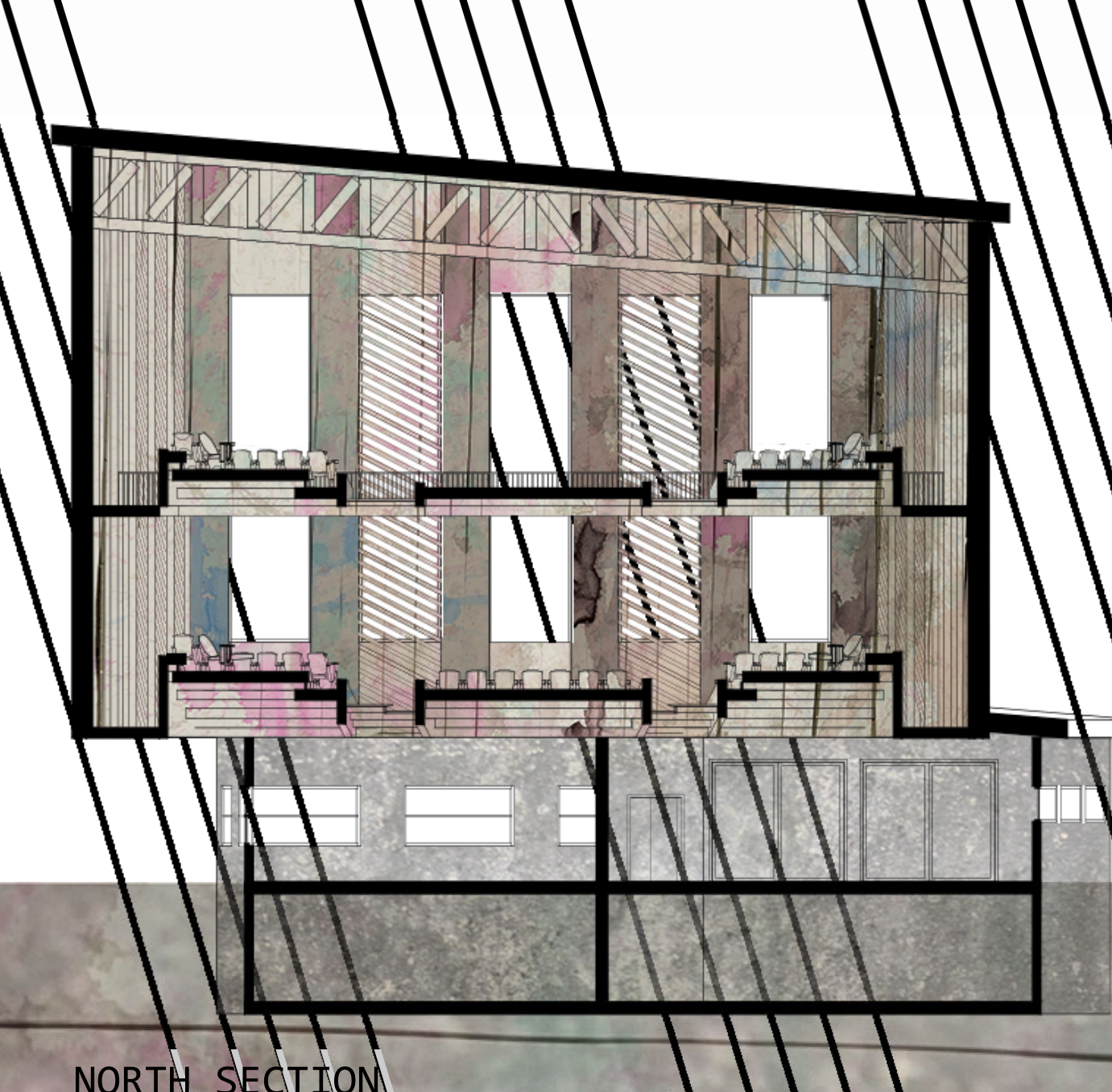
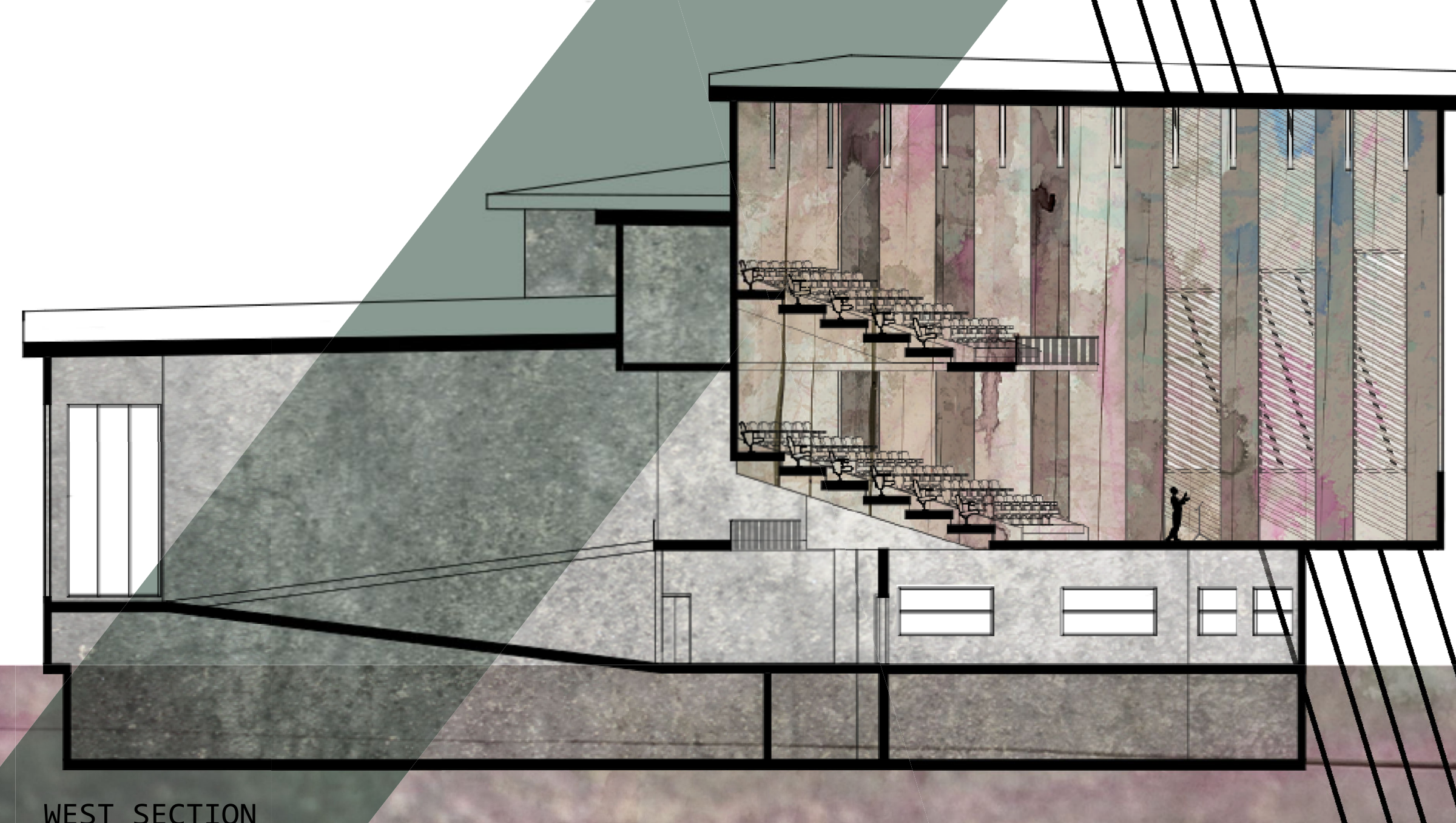
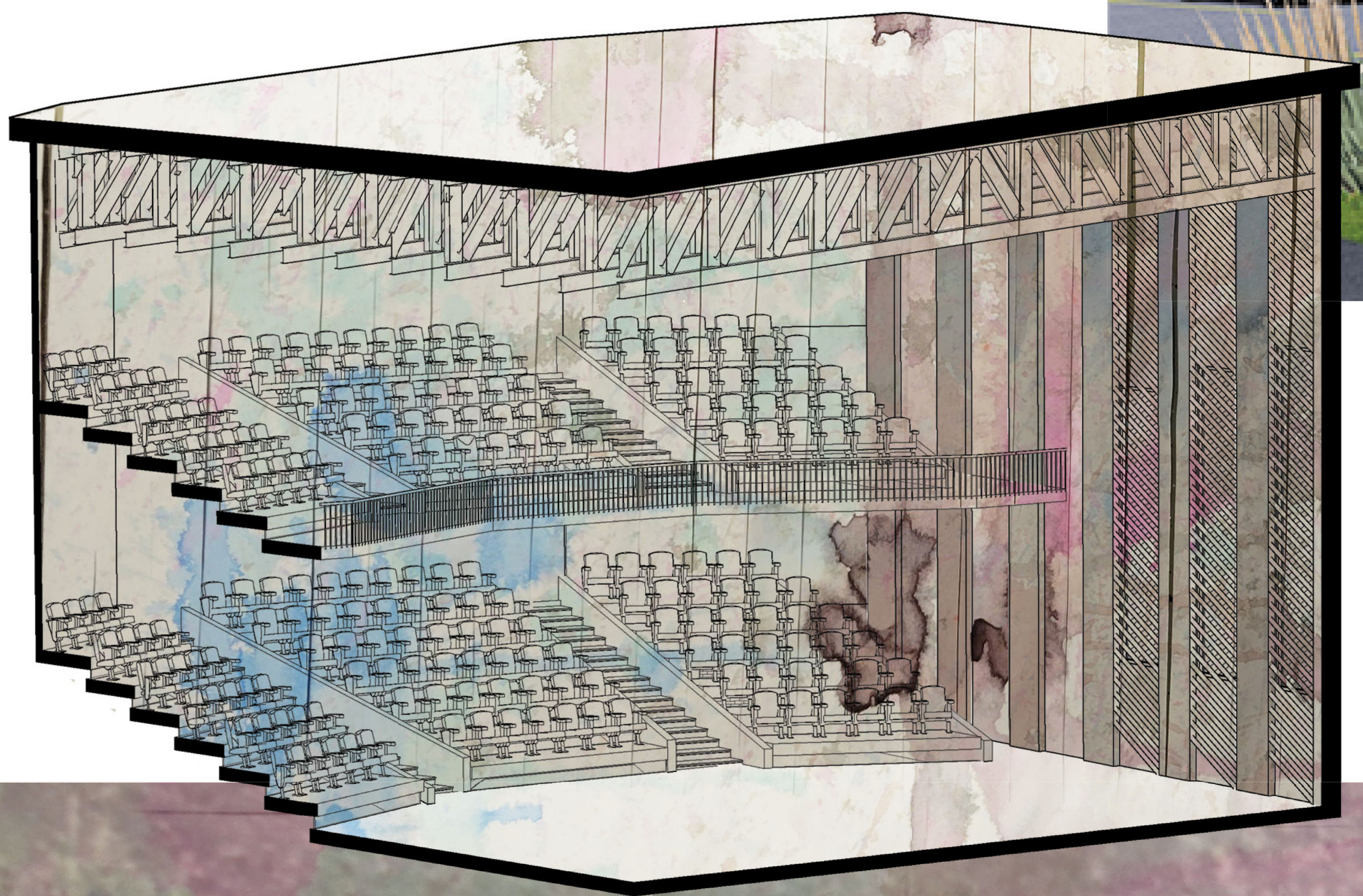
# A TRANSLATION OF ART: HOW ARCHITECTURE INFUSED WITH MUSIC EDUCATES HUMANKIND

During the 18th century, humans started to perceive the world around them differently. Structures were designed and erected with the assumption that the meaning of the building would follow afterwards, instead of building with an initial intent. The world we reside in is now full of buildings that are cheaply constructed, unaesthetic, and not serving the needs of a site or its corresponding community. To return to architecture with embedded meaning, architecture needs to once again be used as a narration for human life. This thesis is a study on how the art of music can be translated into the field of architecture in a way that both educates on the significant effects music has on the individual and the importance of having architecture that is embodied with meaning. Music is something that is deeply connected to human experience, both present and throughout history. It is both particular to each and every individual that experiences it and relates to humankind on a cosmic scale. Music and architecture are both present everywhere in our world, even if we are not always conscious of it. Similar to how light lets us perceive the world that we exist in, music and sound help give meaning to our experiences.

Incorporating concepts from the art of music into the field of design could help us return to having structures that allow for the discovery of stories, moods, emotions, and showcase both the current human experience and past human experiences.

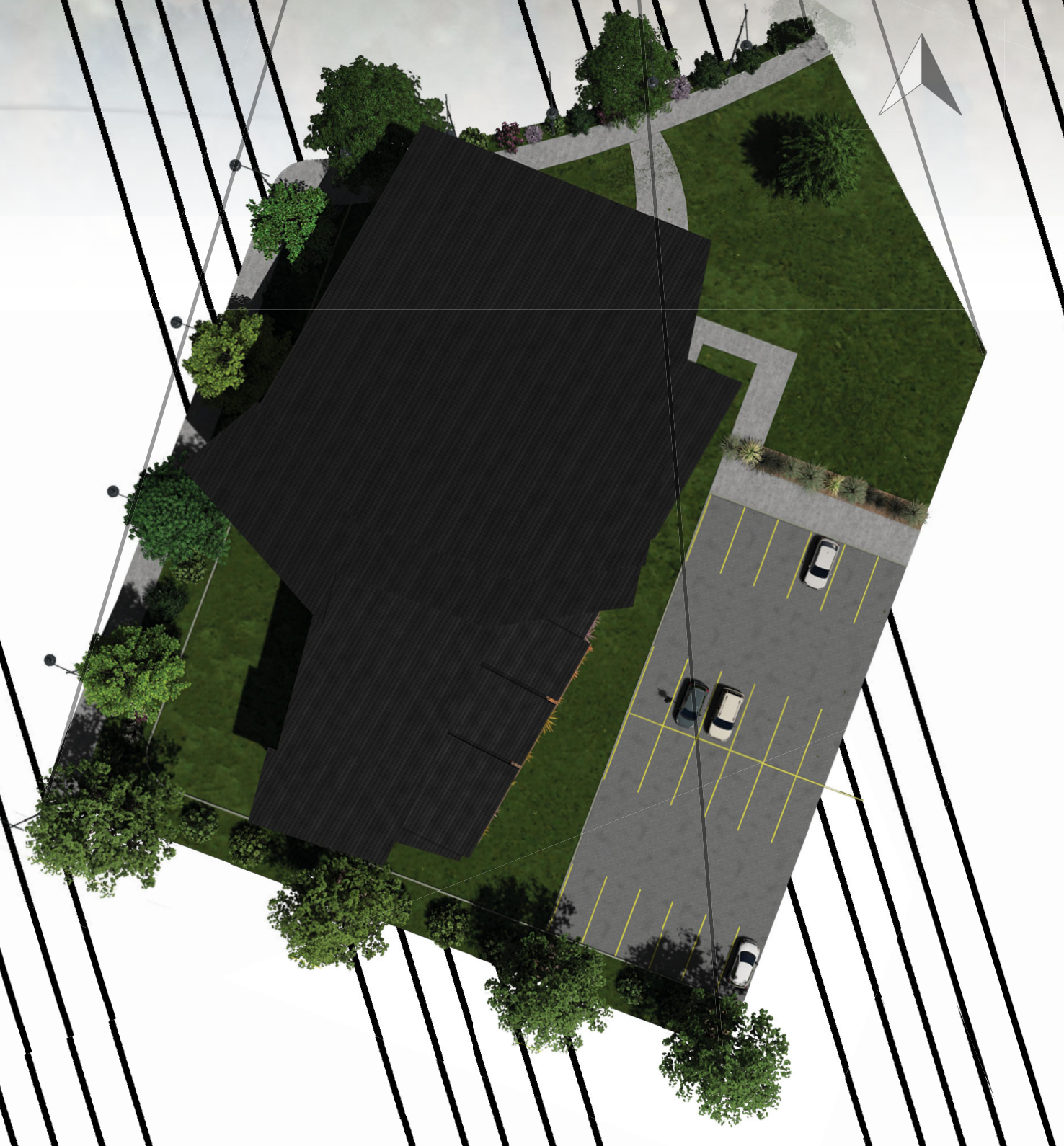


Project inspiration was taken from the song Whitacre: Lux Aurumque which was composed by Eric Whitacre.



This structure is located in Austin, Texas. Austin is known as the Live Music Capital of the World. The city has over 250 live music venues that showcase a wide variety of musical genres. Many of these music venues have also been around since the 1900s, so there is a strong connection between these locations and the culture of Austin. A plethora of music festivals are hosted in the city because of its connection to music and live performances.

This structure will serve two unique but tangential purposes in the city of Austin. It will be a place for people to not only experience live music but also learn about the history and importance of music. The structure is comprised of an orchestral theater, exhibition spaces, and music practice spaces. People can come to this building to experience live music performances, take classes on singing or learning an instrument, learn about music's place in our universe and individual lives, and participate in the creation of stories surrounding music.



When someone enters this structure, they open themselves up to an experience of harmony and dissonance. The individual experiences visual dissonance and tension as they ascend a ramp until they arrive in the orchestral theater, where a release is created with the opening of the space. While traversing the ramp, individuals will encounter cuts of light and sound that filter through the spaces in the tiers of theater seating and shadows of people through the translucent concrete.



The orchestral theater consists of many intersecting pieces to reflect that music is made up of a myriad of layers and perspectives. Windows look out across the street, where the famous concert hall, Armadillo World Headquarters, used to reside before it was torn down in 1981. This structure helped Austin gain its national recognition as the Live Music Capital of the World.

Both music and architecture have strong connections to history and past stories. Both are capable of creating strong atmospheres and strong emotions. Both have a relationship with the idea of harmony and dissonance, music's being auditory harmony and architecture's being visual harmony. Architecture and music both have a unique capability to create atmospheres that affect people's perceptions. Music, similar to architecture, can be created with the intention that it will convey specific moods or stories to the people that interact with it. Human life, musical works, and architecture are all things that are special partially because they are temporary. Yet, they can all relate to very particular events or stories from our history and create those moods and atmospheres that have the ability to impact individuals.

