



mem . or . les . old, And I will re . sa . . . es . made of . The

naught in life to guide me, for life is but a task, And as my love is not real, what can I ask?  
thing I ask is naught to you, its meaning no one knows, I do not want your pi . . .

# A TRANSLATION OF ART: HOW ARCHITECTURE INFUSED WITH MUSIC EDUCATES HUMANKIND

If I could call you mine, dear, There's no-thing I'd not dare, *a tempo.*  
*mf accel. cresc.* *accel.*

Kamryn Brecht

to your eyes, I know you do not care. Our paths will never meet, dear, the

## MY TOPIC

How can the art of music can be translated into the field of architecture in a way that both educates on the significant effects music has on the individual and the importance of having architecture embodied with meaning.

# MUSIC'S STORY

# MUSIC'S ORIGINS

“Chora takes on layered and reflexive significance due to a basic situational duplicity inherent to dramatic representation. Performers often present the “land” in question as “*this* land,” thereby implicating not simply the play’s (often remote) geographical setting...but also, somewhat paradoxically, the very land within and upon which the performers were acting...” (p. 336)

Locations “bore layered significance for the people gathered in the theatre, as each feature was in some way tied to familiar myths, historical events, and common civic practices.” (p. 336)



1.



2.



3.

# A SHIFT AWAY FROM MEANING

Music is no longer created for a purpose

Architecture is no longer created with meaning

Meaning is assumed to come after

Pérez-Gómez, A. (1994). *Chora: The Space of Architectural Representation* (Vol. 1). McGill-Queen's University Press.

Pérez-Gómez, A. (2016b). *Timely Meditations, Vol.2: Architectural Philosophy and Hermeneutics (Selected Essays on Architecture)* (Vol. 2). CreateSpace Independent Publishing Platform.



4.



5.



6.

# MUSIC IN OUR WORLD

# MUSIC'S CONNECTIONS

Individual - Micro

Cosmic - Macro

Godwin, J. (1992). *The Harmony of the Spheres: A Sourcebook of the Pythagorean Tradition in Music*. Inner Traditions International.

Pérez-Gómez, A. (1994). *Chora: The Space of Architectural Representation* (Vol. 1). McGill-Queen's University Press.



# SUPERSTRINGS

Our universe is made of tiny strings that vibrate, both on an individual level and in relation to each other

If the world is made of vibrations, music relates to everything



8.

Kuma. (2016, May 3). Difference Between Fermions and Bosons. Pediaa.Com. <https://pediaa.com/difference-between-fermions-and-bosons/>

Mattson, M. (2021). Imagine the Universe! IMAGINE THE UNIVERSE!  
<https://imagine.gsfc.nasa.gov/science/questions/superstring.html>



# MUSIC'S PRESENCE

Music and sound are present everywhere

Similar to light, music and sound give meaning to our world

Music is made of lots of details and perspectives coming together

Marcolio Facino - “The eye sees nothing else except the light of the sun, for the shapes and colors of bodies are never seen unless they are illuminated with light...The eyes, with the help of a certain ray of their own perceive the light this imprinted: the light itself cannot be a body, since it fills the whole world instantaneously from east to west penetrates the whole body of air and water everywhere without obstruction.” (p.51) (as cited in Pérez-Gómez, 2016a)

# HOW DOES MUSIC RELATE TO ARCHITECTURE

# MUSIC AND ARCHITECTURE

Both connected to history

Both strong in emotions and atmospheres

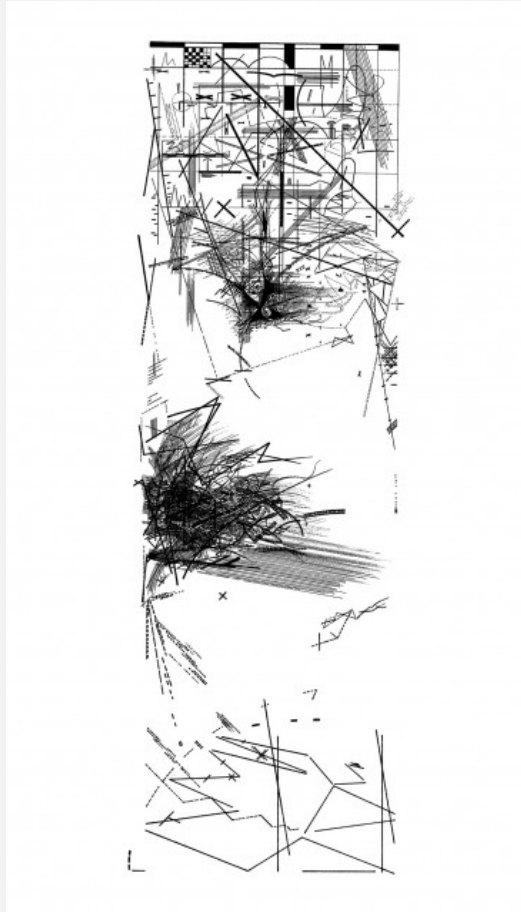
Both relate to harmony and dissonance

Both can relate to proportion and ratios

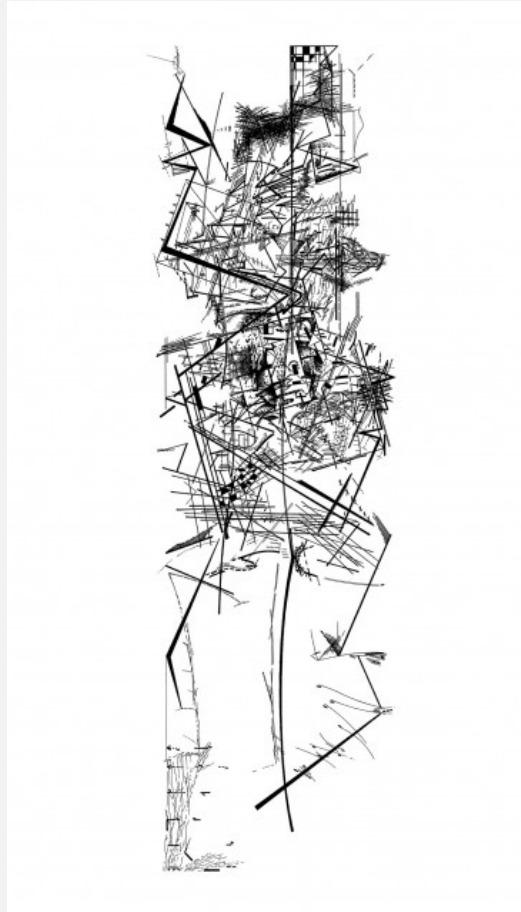


9.

# MUSIC TO ARCHITECTURE



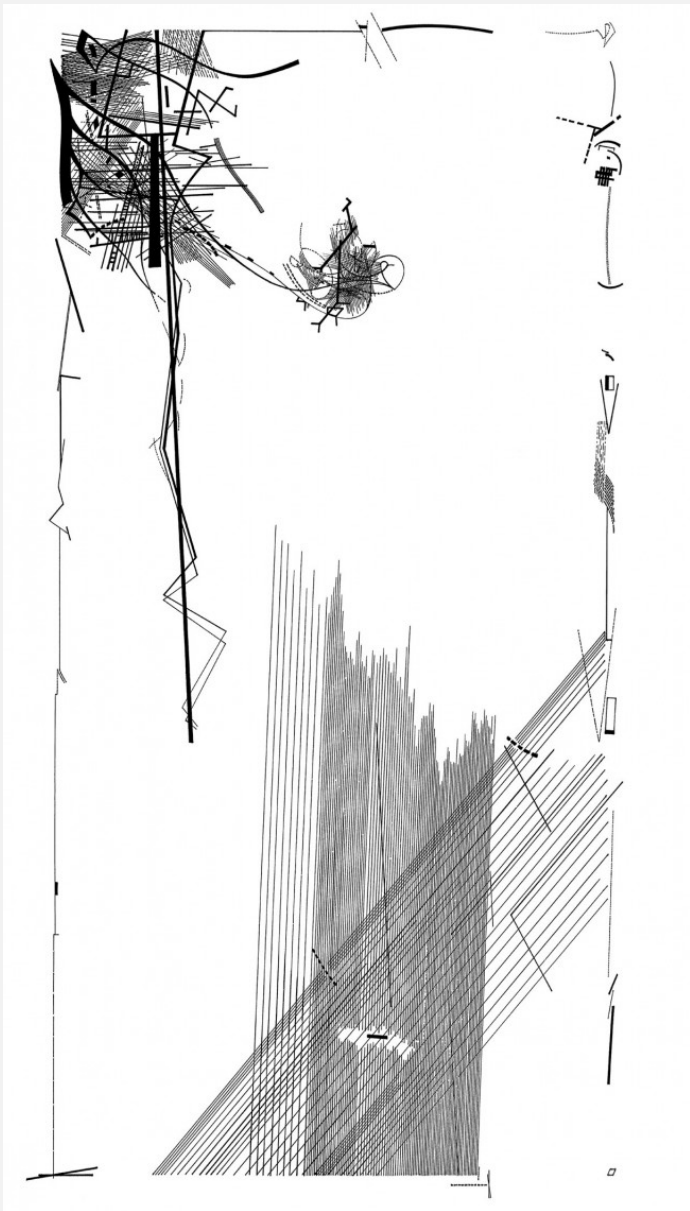
10.



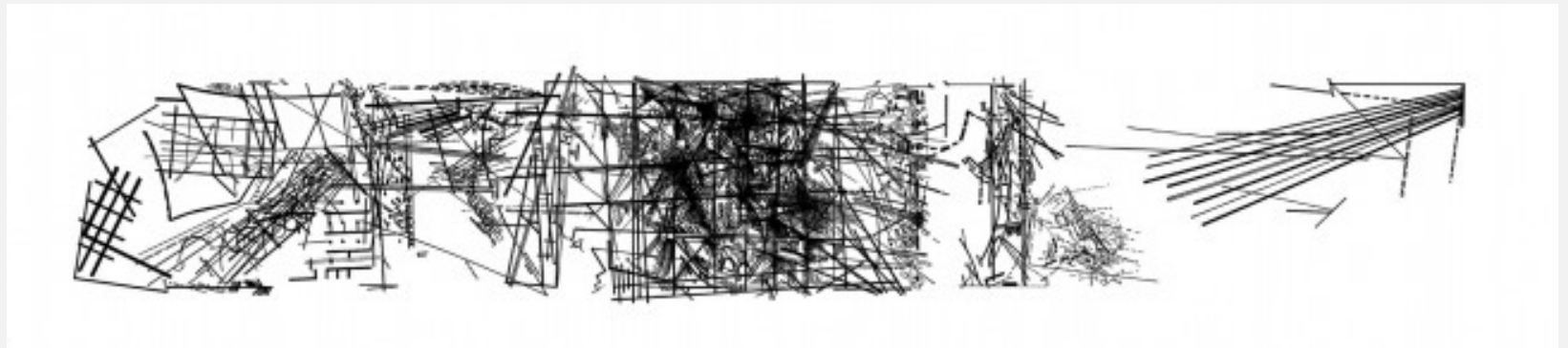
11.



12.



13.



14.



15.



16.

PRECEDENT

# BERLINER PHILHARMONIE

Berlin, Germany

Hans Scharoun

Zohlen, G. (n.d.). Space—Music—People. Berliner Philharmoniker. Retrieved May 8, 2024, from <https://www.berliner-philharmoniker.de/en/about-us/philharmonie/architecture/>

Kroll, A. (2019, January 14). Architecture Classics: Berlin Philharmonic / Hans Scharoun. ArchDaily. <https://www.archdaily.com/108538/ad-classics-berlin-philharmonic-hans-scharoun>



17.



18.

ARTEFACT



# MUSIC - EMOTION - CONNECTION

Literature - Light and Gold (Lux Aurumque)

Music - Whitacre: Lux Aurumque

Art - Watercolor Paintings

Light, Light

Light, Light

Light, Light

Warm

Warm

And Heavy

And Heavy

And Heavy

Pure

Pure Like Gold

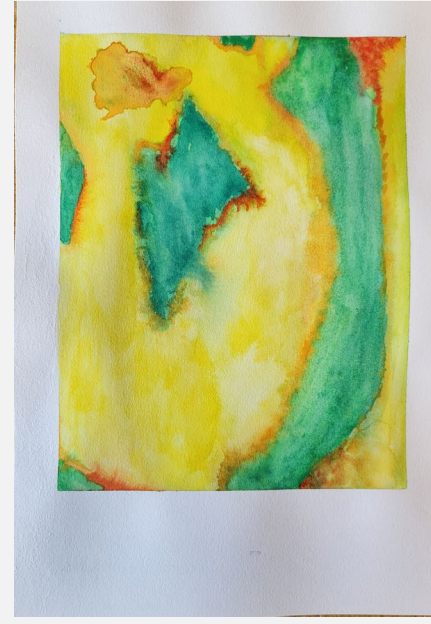
They Sing and Sing and Sing

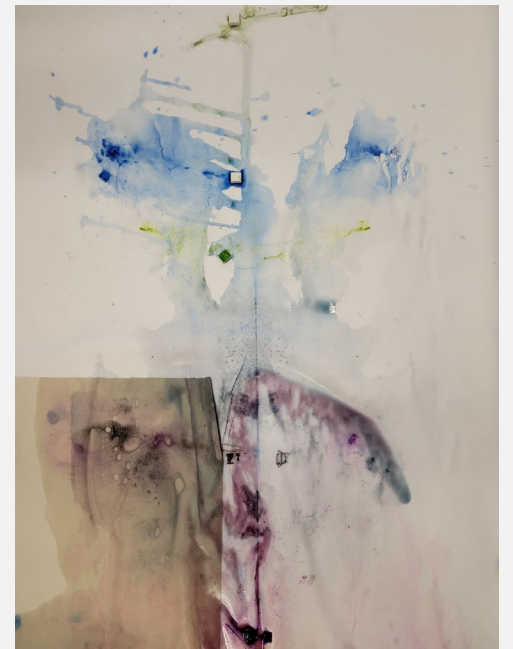
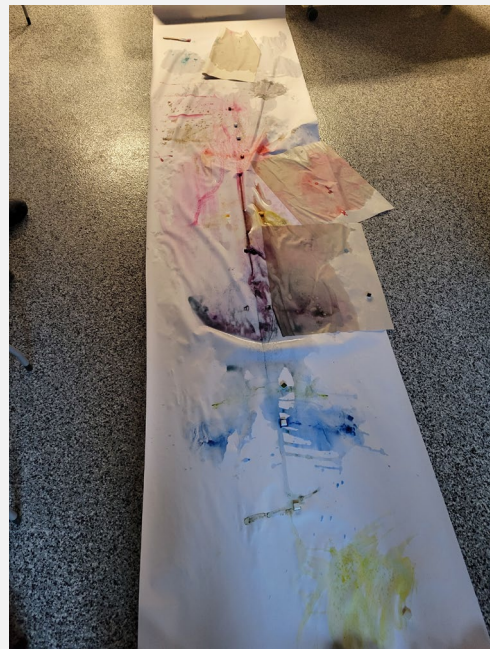
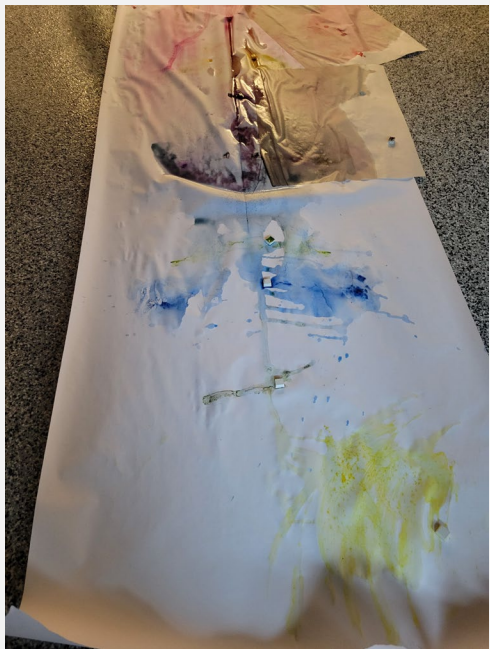
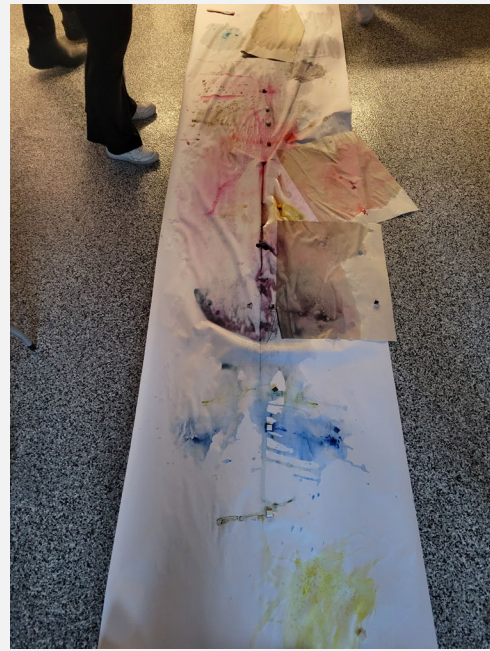
To the Newborn Babe

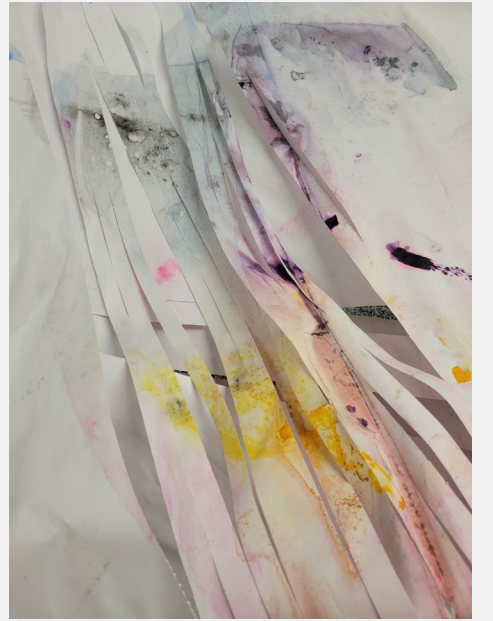
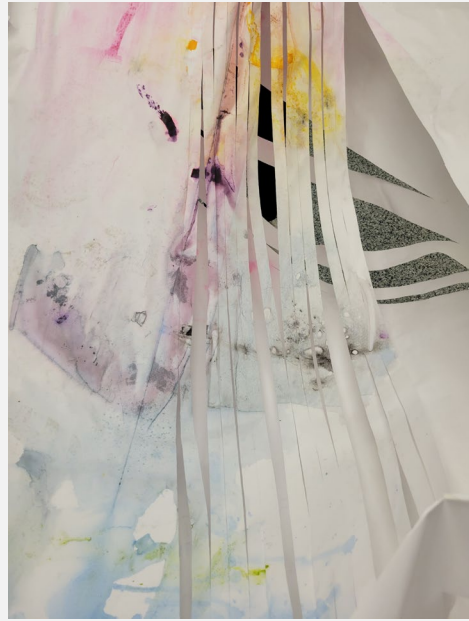
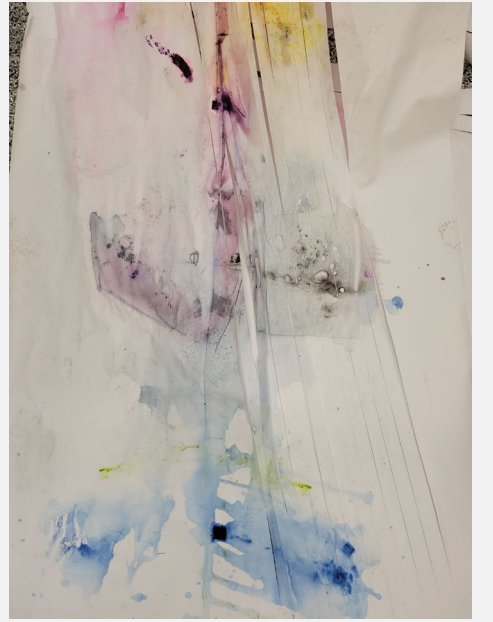
LIGHT AND GOLD

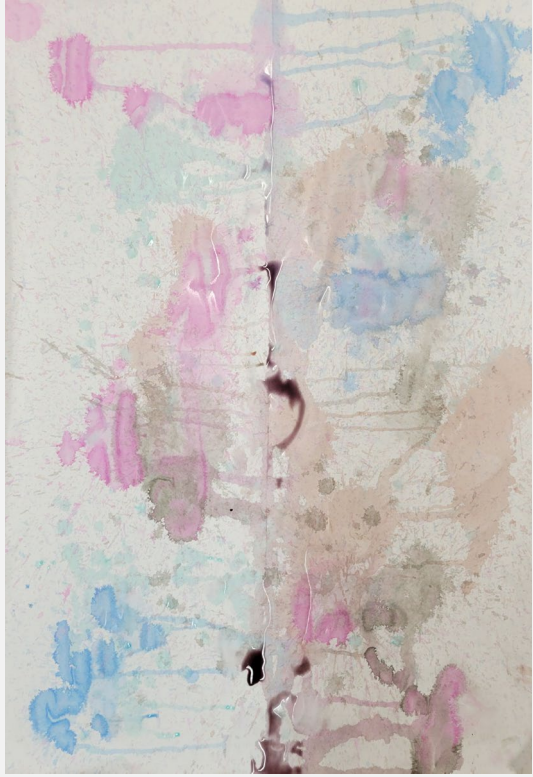
LIGHT, LIGHT  
LIGHT, LIGHT  
LIGHT, LIGHT  
WARM  
WARM  
AND HEAVY  
AND HEAVY  
AND HEAVY  
PURE

PURE LIKE GOLD  
THEY SING AND SING AND SING  
TO THE NEWBORN BABE





















# ARCHITECTURE

# THE BUILDING

A Theater and museum, where people experience atmospheres and learn about them

Tells the story of music

Shows how music relates to humanity

The human experience affects art and art affects the human experience

Music and architecture relate to everyone

How music creates atmospheres, just like architecture

# AUSTIN, TEXAS



19.



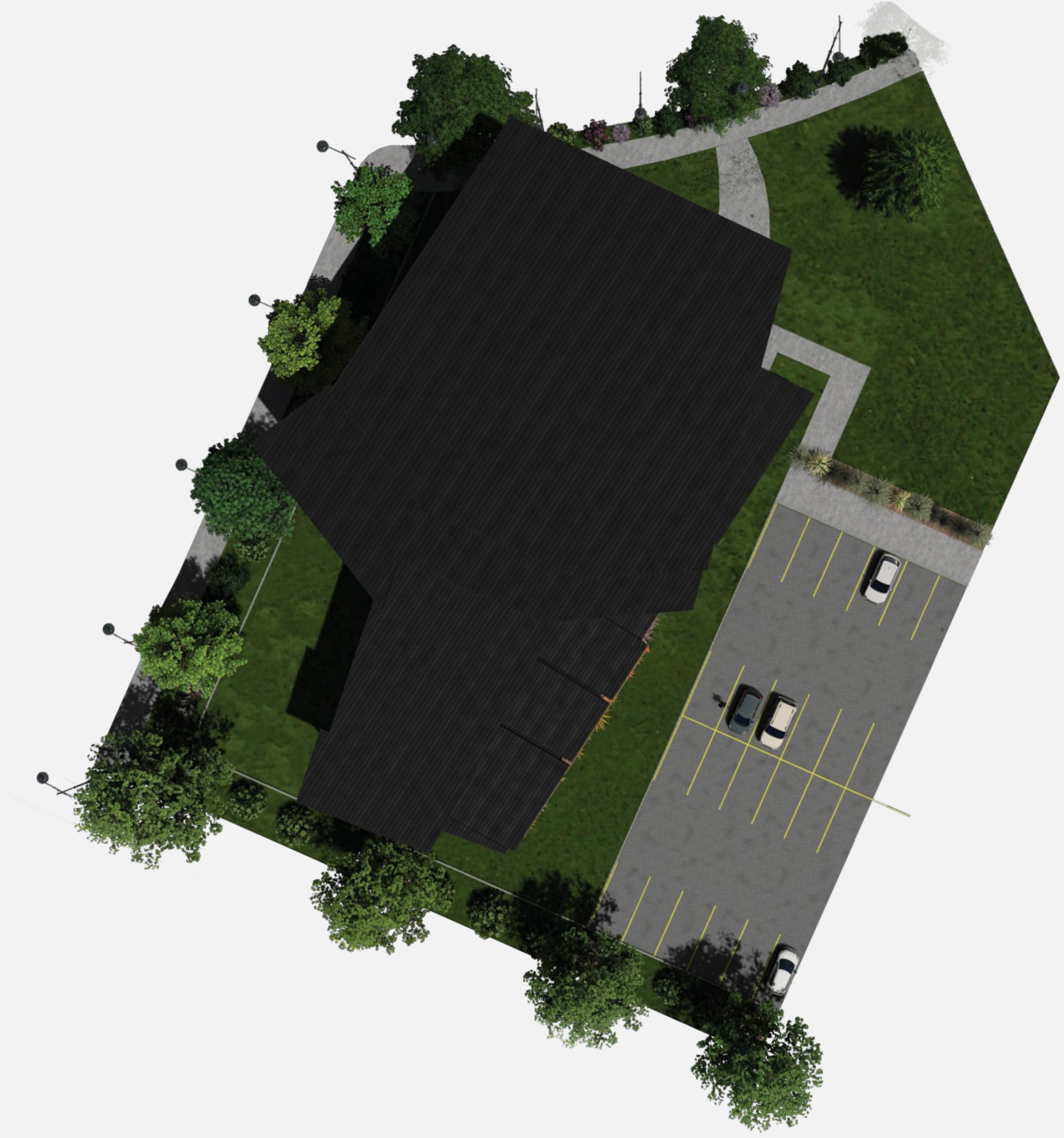
20.

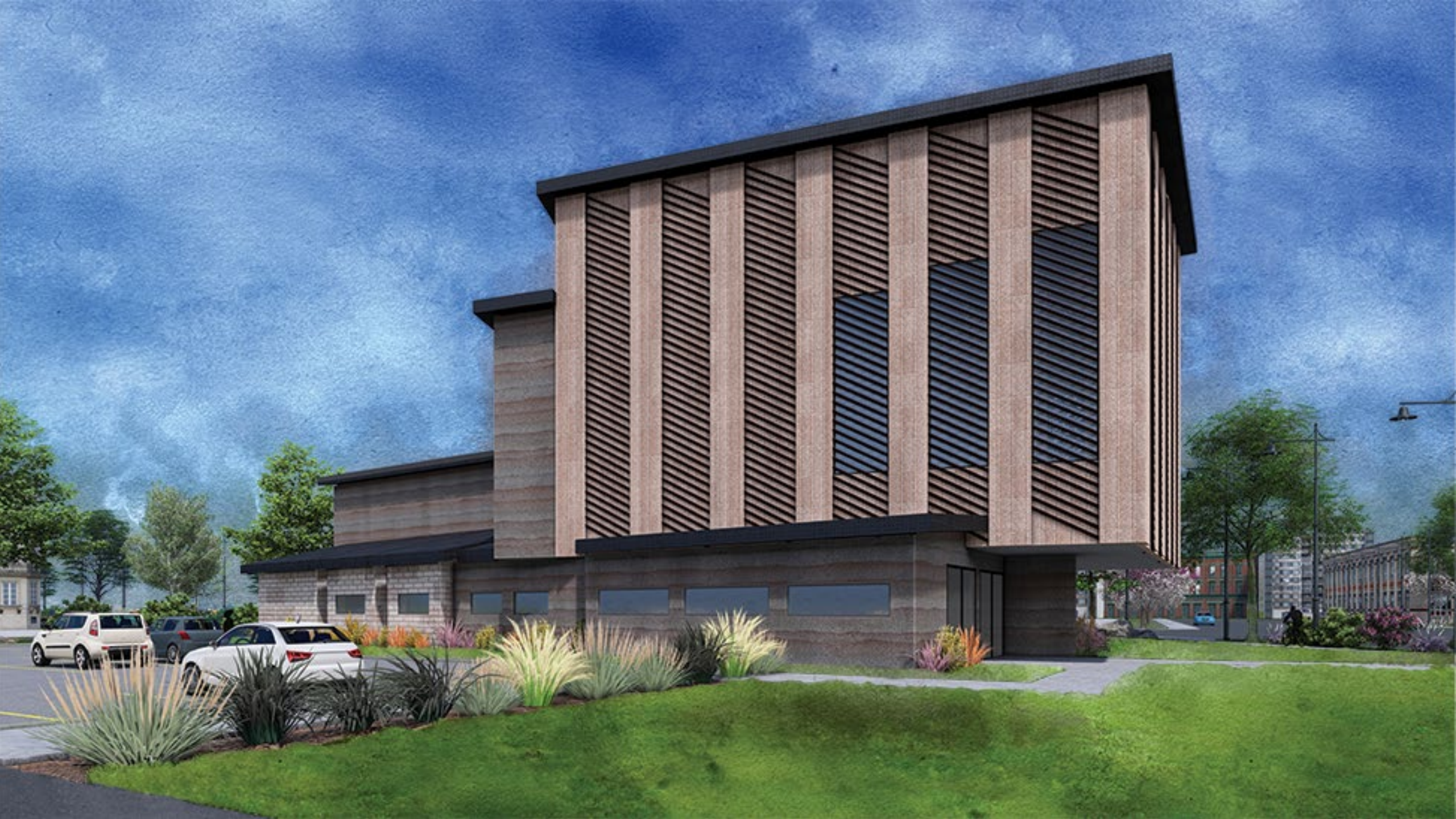


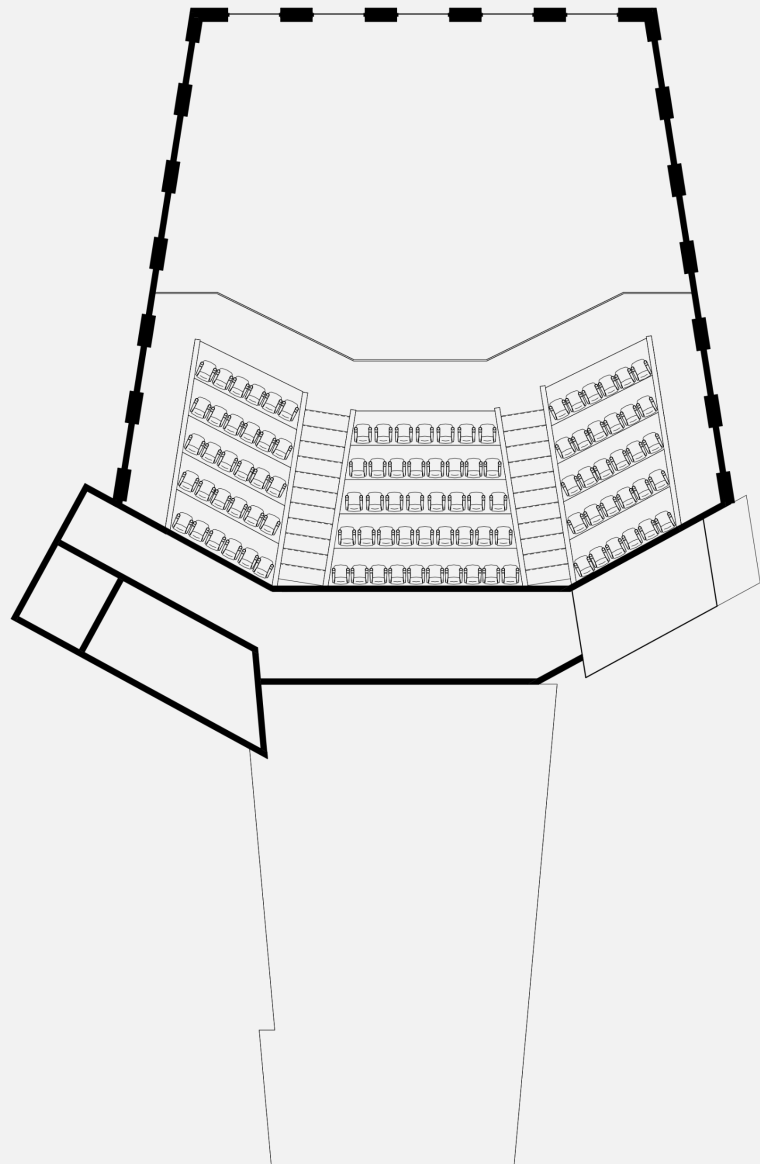
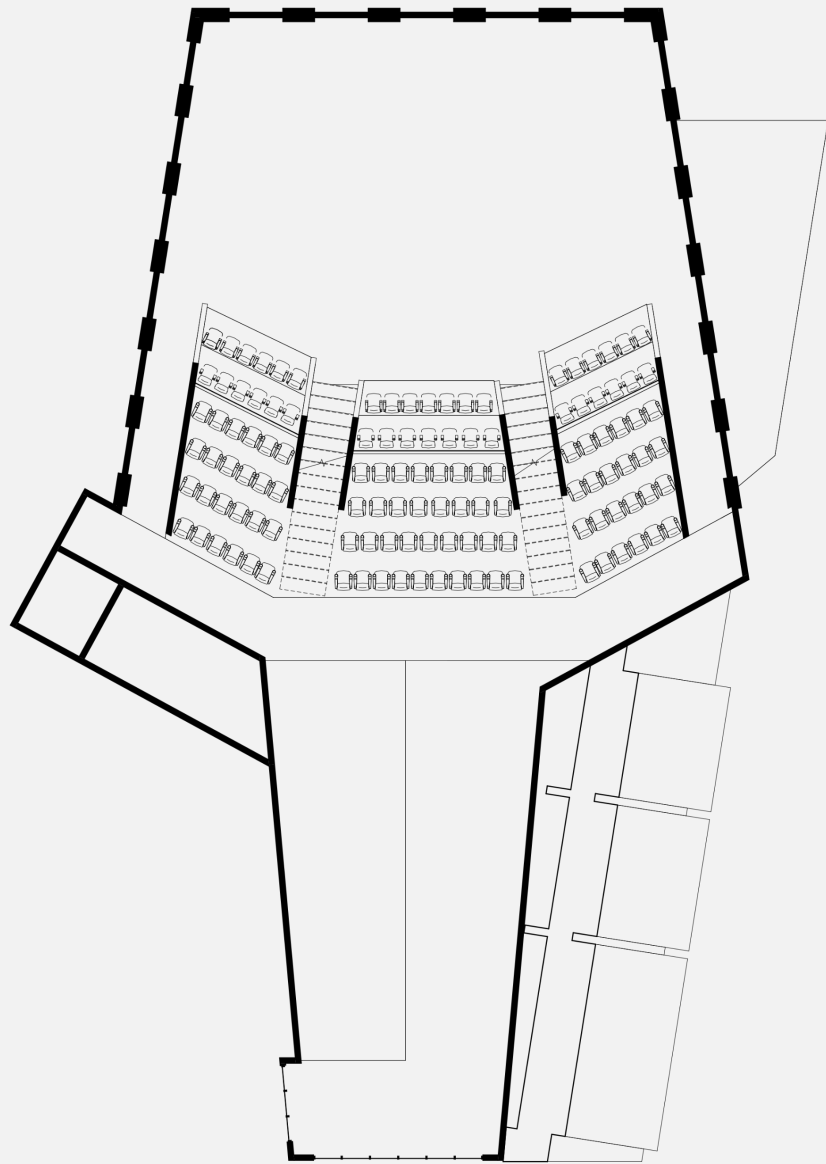
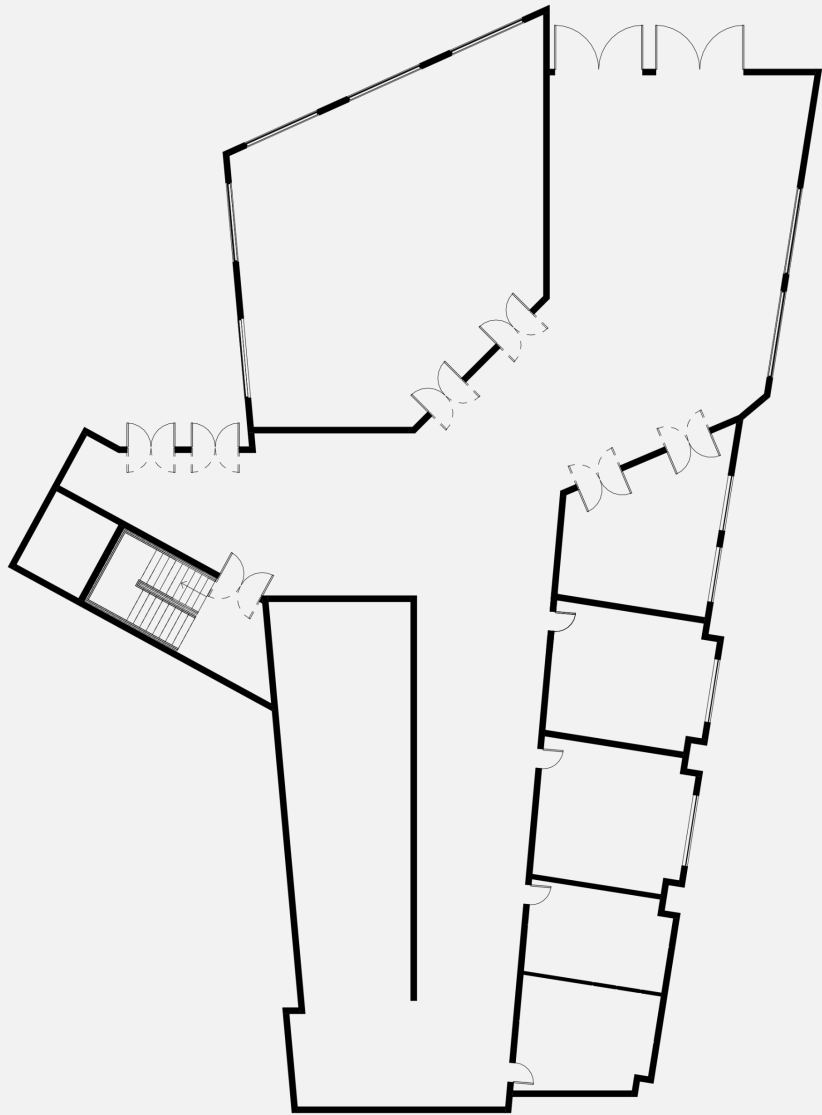
21.



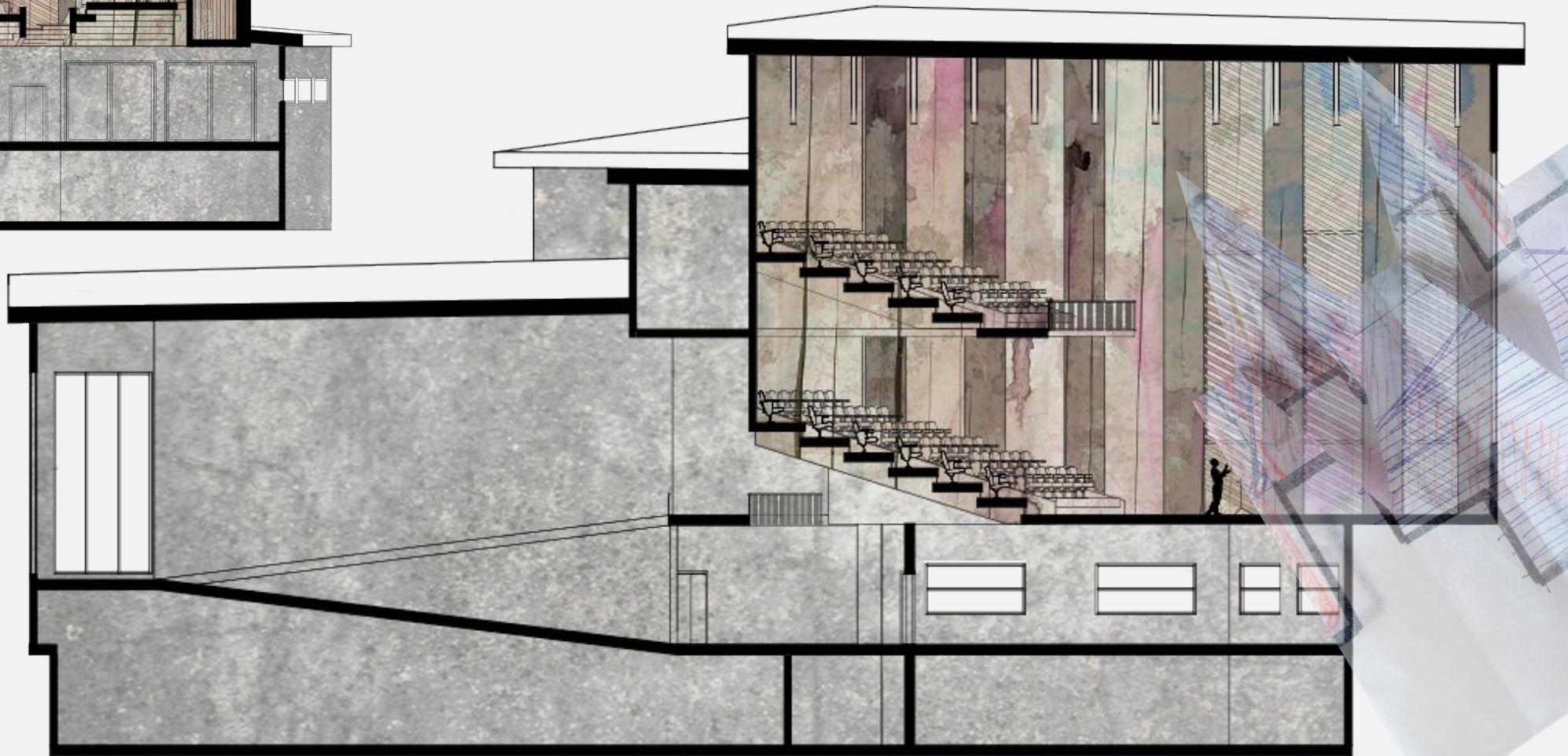
22.





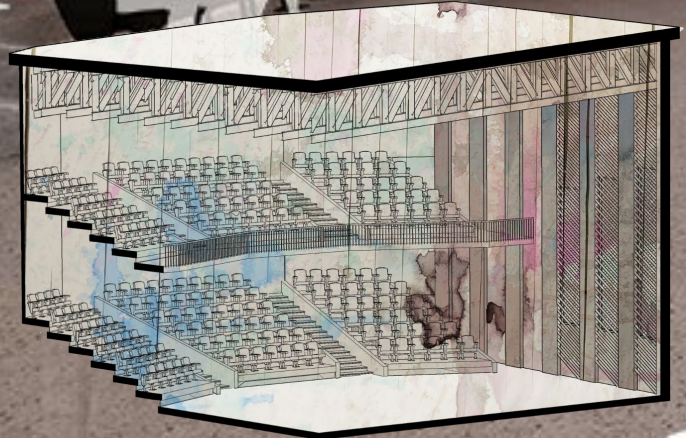














THANK YOU

# REFERENCES

## SLIDE FOUR

1. Landrum, L. (2016). Chōra before Plato: Architecture, Drama, and Receptivity. In A. Pérez-Gómez & S. Parcell (Eds.), *Chora: Intervals in the Philosophy of Architecture* (Vol. 7, pp. 323–358). McGill-Queen's University Press.

## SLIDE FIVE

1. Pérez-Gómez, A. (1994). *Chora: The Space of Architectural Representation* (Vol. 1). McGill-Queen's University Press.
2. Pérez-Gómez, A. (2016). *Timely Meditations, Vol.2: Architectural Philosophy and Hermeneutics (Selected Essays on Architecture)* (Vol. 2). CreateSpace Independent Publishing Platform.

## SLIDE SEVEN

1. Godwin, J. (1992). *The Harmony of the Spheres: A Sourcebook of the Pythagorean Tradition in Music*. Inner Traditions International.
2. Pérez-Gómez, A. (2016a). *Attunement: Architectural Meaning After the Crisis of Modern Science*. The MIT Press.

## SLIDE EIGHT

1. Mattson, M. (2021). *Imagine the Universe! IMAGINE THE UNIVERSE!* <https://imagine.gsfc.nasa.gov/science/questions/superstring.html>
2. Kuma. (2016, May 3). *Difference Between Fermions and Bosons*. Pediaa.Com. <https://pediaa.com/difference-between-fermions-and-bosons/>

## SLIDE NINE

1. Pérez-Gómez, A. (2016). *Attunement: Architectural Meaning After the Crisis of Modern Science*. The MIT Press.
2. Spitzer, M. (2015). *Metaphor and Musical Thought*. The University of Chicago Press.

## SLIDE FIFTEEN

1. Kroll, A. (2019, January 14). *Architecture Classics: Berlin Philharmonic / Hans Scharoun*. ArchDaily. <https://www.archdaily.com/108538/ad-classics-berlin-philharmonic-hans-scharoun>
2. Zohlen, G. (n.d.). *Space—Music—People*. Berliner Philharmoniker. Retrieved May 8, 2024, from <https://www.berliner-philharmoniker.de/en/about-us/philharmonie/architecture/>

# REFERENCES

## SLIDE SEVENTEEN

1. Eric Whitacre—Lux Aurumque—English translation. (n.d.). Lyrics Translate. Retrieved May 7, 2024, from <https://lyricstranslate.com/en/lux-aurumque-light-and-gold.html>
2. Lux Aurumque. (2023). In Wikipedia. [https://en.wikipedia.org/w/index.php?title=Lux\\_Aurumque&oldid=1164794913](https://en.wikipedia.org/w/index.php?title=Lux_Aurumque&oldid=1164794913)

## SLIDE TWENTY-NINE

1. Armadillo World Headquarters. (2024). In Wikipedia. [https://en.wikipedia.org/w/index.php?title=Armadillo\\_World\\_Headquarters&oldid=1219930011](https://en.wikipedia.org/w/index.php?title=Armadillo_World_Headquarters&oldid=1219930011)
2. Buchele, M. (2016, September 21). How Did Austin Become The “Live Music Capital Of The World”? KUT Radio, Austin’s NPR Station. <https://www.kut.org/austin/2016-09-21/how-did-austin-become-the-live-music-capital-of-the-world>
3. Morthland, M. (n.d.). Iconic Austin Music Venues. Visit Austin. Retrieved May 7, 2024, from <https://www.austintexas.org/music-scene/iconic-austin/>
4. Music of Austin, Texas. (2024). In Wikipedia. [https://en.wikipedia.org/w/index.php?title=Music\\_of\\_Austin,\\_Texas&oldid=1219043926](https://en.wikipedia.org/w/index.php?title=Music_of_Austin,_Texas&oldid=1219043926)

# FIGURES

1. [The Theater of Dionysus Seating]. (n.d.). [Photograph]. Retrieved April 29, 2024, from <https://tr.pinterest.com/pin/318840848604215309/>
2. [The Theater of Dionysus Back View]. (n.d.). [Photograph]. Retrieved April 29, 2024, from <https://www.timetoast.com/timelines/greek-theatre-35b489df-948f-4020-bfd8-19d346fbb6f7>
3. [Overlook of the Theater of Dionysus]. (n.d.). [Photograph]. Retrieved April 29, 2024, from <https://www.pinterest.com/pin/811985007803050440/>
4. Roberts, T. (2011). [The Berlin Philharmonic Hall] [Photograph]. Retrieved April 29, 2024, from <https://www.thrillist.com/travel/nation/the-9-worst-designed-cities-in-the-us>
5. [Aerial View of Los Angeles Streets]. (n.d.). [Photograph]. Retrieved April 29, 2024, from <https://www.thrillist.com/travel/nation/the-9-worst-designed-cities-in-the-us>
6. [Poor Public Space in Miami, Florida]. (n.d.). [Photograph]. Retrieved April 29, 2024, <https://www.miamiherald.com/news/local/community/miami-dade/article219336640.html>
7. Kircher, A. (1650). Musurgia Universalis [Print]. [https://www.researchgate.net/figure/Frontispiece-of-Athanasius-Kircher-Musurgia-universalis-1650\\_fig1\\_348011707](https://www.researchgate.net/figure/Frontispiece-of-Athanasius-Kircher-Musurgia-universalis-1650_fig1_348011707)
8. Kiefer, A. (2019). Superstrings [Painting]. <https://www.whitecube.com/gallery-exhibitions/superstrings-runes-the-norns-gordian-knot>
9. [Overlook of the Theater of Dionysus]. (n.d.). [Photograph]. Retrieved April 29, 2024, from <https://www.pinterest.com/pin/811985007803050440/>
10. Libeskind, D. (2000). Chamberworks [Drawing]. <https://libeskind.com/work/chamber-works/>.
11. Libeskind, D. (2000). Chamberworks [Drawing]. <https://libeskind.com/work/chamber-works/>.
12. Libeskind, D. (2000). Chamberworks [Drawing]. <https://libeskind.com/work/chamber-works/>.
13. Libeskind, D. (2000). Chamberworks [Drawing]. <https://libeskind.com/work/chamber-works/>.
14. Libeskind, D. (2000). Chamberworks [Drawing]. <https://libeskind.com/work/chamber-works/>.
15. Libeskind, D. (2000). Chamberworks [Drawing]. <https://libeskind.com/work/chamber-works/>.
16. Libeskind, D. (2000). Chamberworks [Drawing]. <https://libeskind.com/work/chamber-works/>.



# FIGURES

17. Gora, A. (n.d.). [The Berlin Philharmonic Hall] [Photograph]. Retrieved April 29, 2024, from <https://www.tip-berlin.de/berlin-besucher/sehenswuerdigkeiten/philharmonie-berlin-geschichte-besucherinfos/>
18. [The Berlin Philharmonic Hall Interior]. (n.d.). [Photograph]. Retrieved April 29, 2024, from <https://philharmonie.com/en/venue/philharmonie-berlin>.
19. Yaetes, S. (1997). Armadillo world headquarters [Painting]. <https://www.samyetes.net/prints-and-posters-available>.
20. Google Earth. (n.d.). [Austin, Texas] [Satellite Map]. Retrieved October 12, 2024, <https://earth.google.com/web/search/S+1st+St+%26+Barton+Springs+Rd+AUSTIN+TX/@30.25859116,-97.75009452,137.59606429a,897.99179707d,35y,30.12106149h,0t,0r/data=CigiJgokCe1UgLsNQz5AEbCo5rguQT5AGbT7aPSub1jAITR1R8pUcFjAOgMKATA>
21. Google Earth. (n.d.). [Austin, Texas] [Street Map]. Retrieved October 12, 2024, <https://earth.google.com/web/search/S+1st+St+%26+Barton+Springs+Rd+AUSTIN+TX/@30.25848015,-97.75027256,138.95619202a,0d,60y,140.45736487h,86.90531855t,0r/data=CigiJgokCe1UgLsNQz5AEbCo5rguQT5AGbT7aPSub1jAITR1R8pUcFjAlhoKFlk2NGtobnprRWhxUjNVU2lfeE5SSIEQAjoDCgEw>
22. Google Earth. (n.d.). [Austin, Texas] [Street Map]. Retrieved October 12, 2024, <https://earth.google.com/web/search/S+1st+St+%26+Barton+Springs+Rd+AUSTIN+TX/@30.25848015,-97.75027256,138.95619202a,0d,60y,140.45736487h,86.90531855t,0r/data=CigiJgokCe1UgLsNQz5AEbCo5rguQT5AGbT7aPSub1jAITR1R8pUcFjAlhoKFlk2NGtobnprRWhxUjNVU2lfeE5SSIEQAjoDCgEw>