

A LANDSCAPE FOR PLAY

An Exploration of Sensory Architecture Solutions for Children with
Autism Spectrum Disorder

Judith Frelich
School of Design, Art and Architecture
Master of Architecture



Dionne Quintuplets
Ontario, Canada
1935



Donald Triplett

The First American Child to Receive a Diagnosis of Autism

Triplett Family Archive



The Preventorium
Sanatorium, Mississippi

Autism Spectrum Disorder (ASD) is a neurological and developmental disorder that affects how people interact with others, communicate, learn and behave.

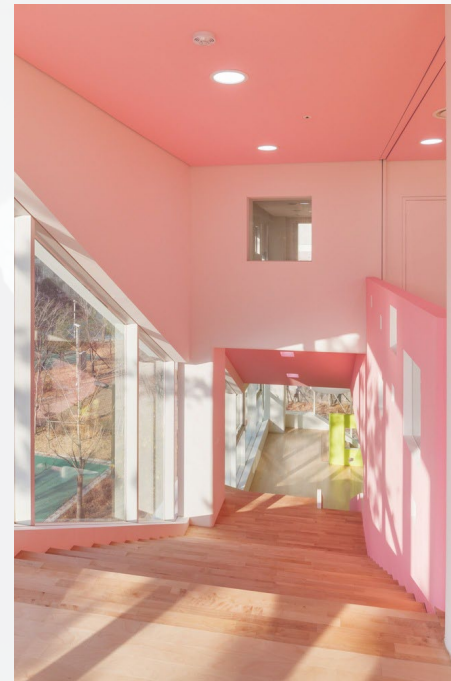
Sight



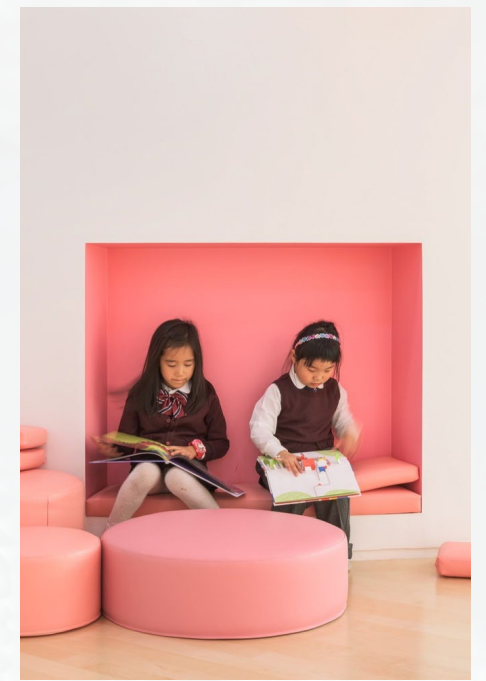
Acoustics



Touch



Vestibular and Proprioceptive



“...**sensation** as a unit of experience...”

Phenomenology of Perception
Maurice Merleau-Ponty

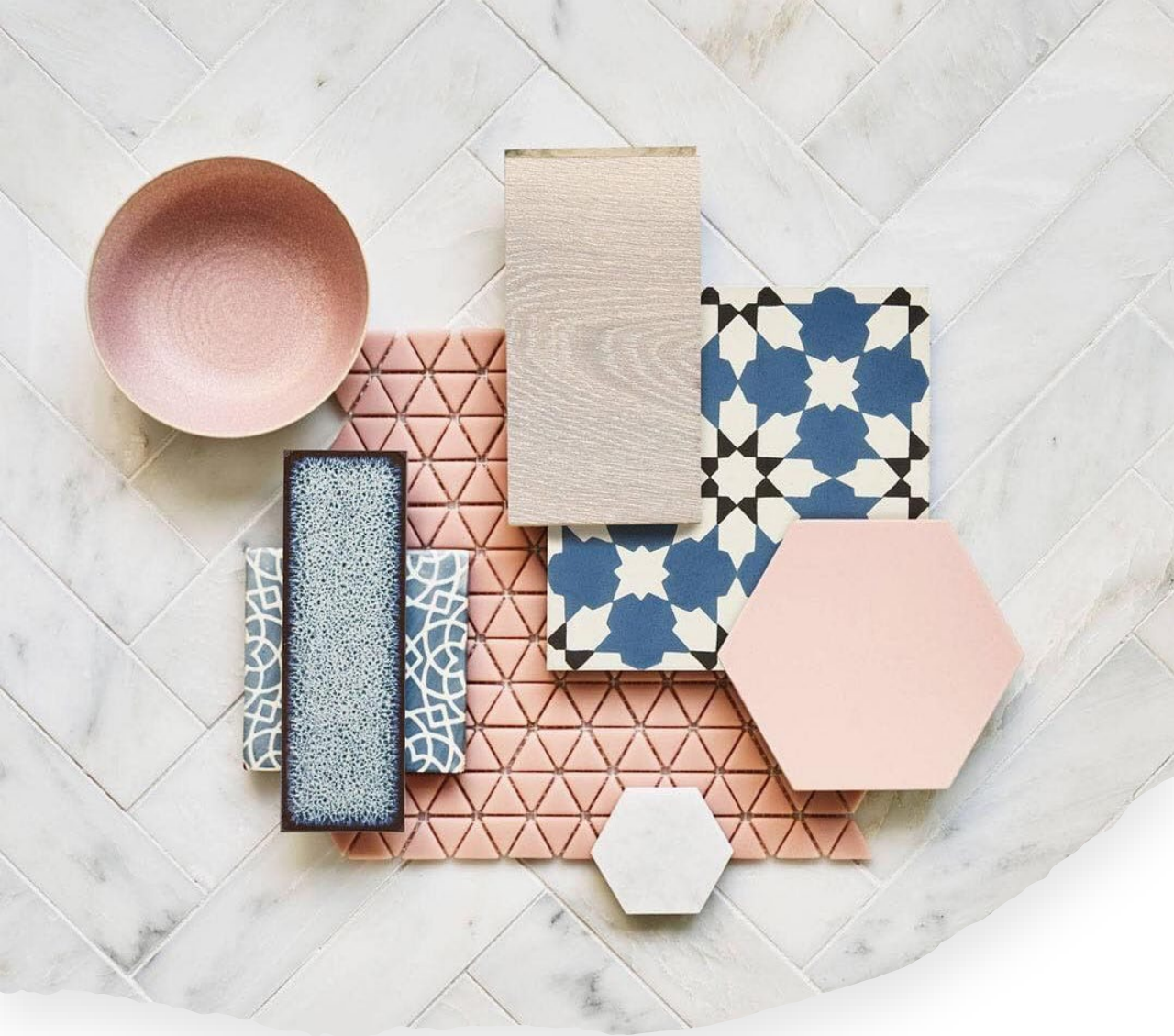
“...the presence, permanence, and continuity of our experiential world is established and maintained as an embodied and haptic understanding of **‘the flesh of the world’** that we share with our bodily existence...”

In Praise of Vagueness
Juhani Pallasmaa

“...the sense of self and the world could, in fact, be regarded as one of our sensory systems...”

In Praise of Vagueness

Juhani Pallasmaa



Stimmung

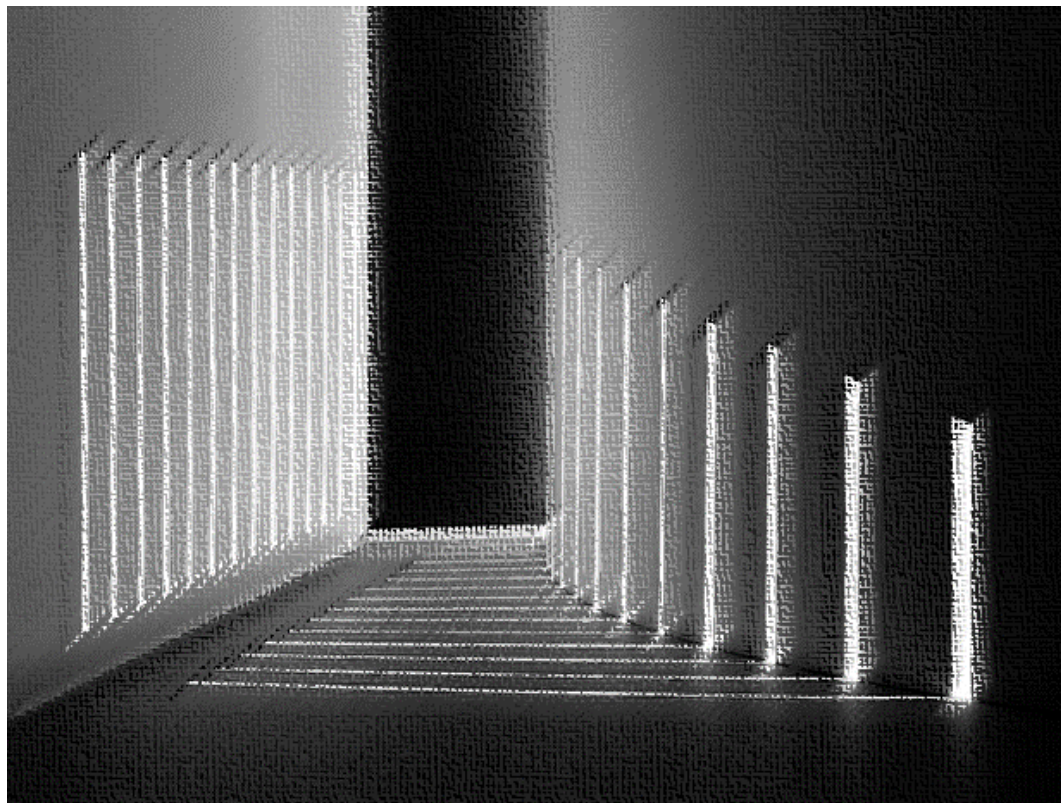
shti-mún

GERMAN NOUN

attunement : mood : atmosphere

Martin Heidegger





“...the **play** of light...”

Phenomenology of Perception
Maurice Merleau-Ponty



“...the **play** of the waves...”

Phenomenology of Perception
Maurice Merleau-Ponty



“What a remarkable thing it is that a slight pitch in balance counts as nothing that **we can tilt until almost falling** and then swing back into equilibrium. Yet, on the other hand, whenever we go beyond this point of balance, we fall into irreversible misfortune.”

The Enigma of Health
Hans-Georg Gadamer

“...there are ‘**outer**’ and ‘**inner**’ sides of embodiment...”

The Embodied Mind: Cognitive Science and Human Experience
Francisco J. Varela, Evan Thompson, and Elenor Rosch

The Embodied Mind: Cognitive Science and Human Experience

Embodiment: The mind is not separate from the body, but deeply interconnected with it. They argue that the body plays a central role in shaping cognitive processes and experiences.

Enaction: Cognition is not just about mental representations or passive processing of information. Instead, it arises through active engagement and interaction with the environment. They emphasize that the mind is enacted through an organism's ongoing engagement with the world.

Embeddedness: Cognition is situated and inseparable from the context in which it occurs. It is strongly influenced by the environment, social interactions, and cultural factors. The mind is not isolated but embedded within its surroundings.

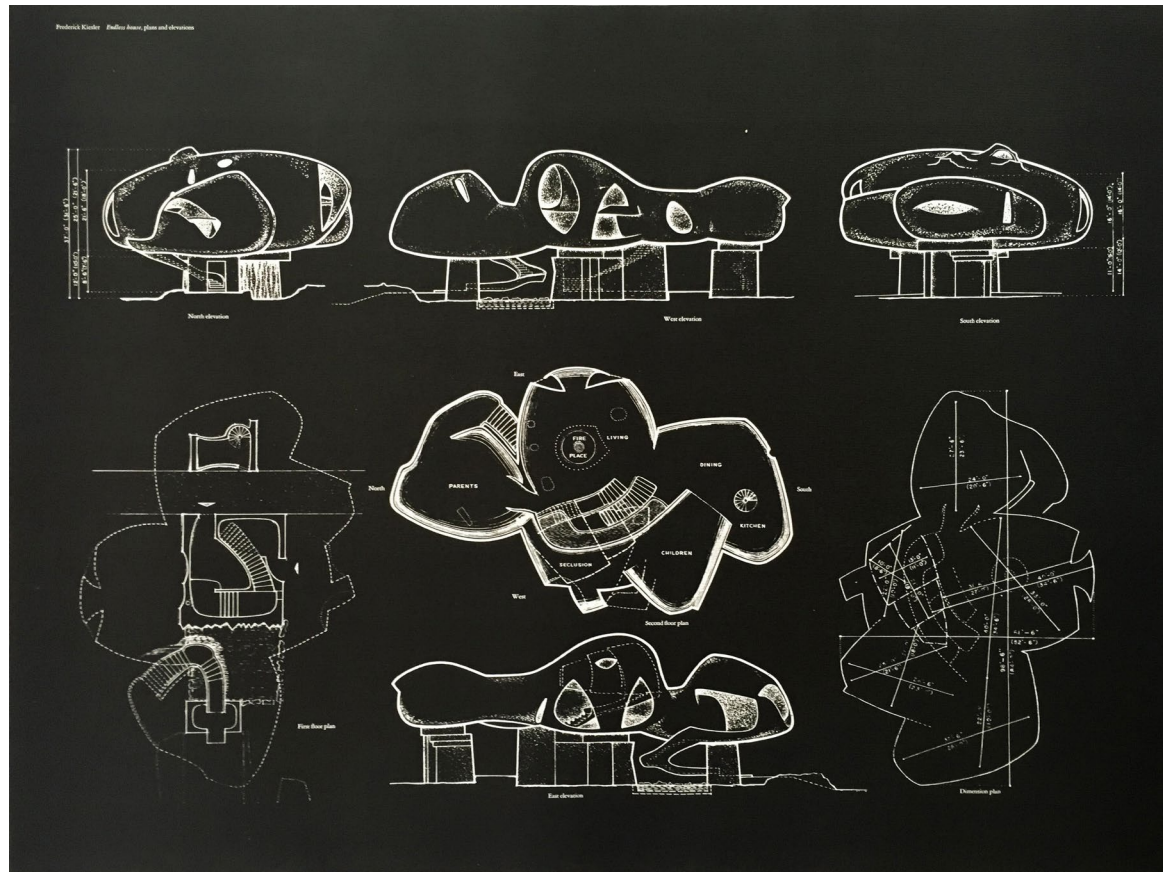
Dynamic Systems: They propose that cognition is a dynamic system, constantly evolving and changing through the interaction between the body, mind, and the environment. The mind emerges from this complex, interdependent system.



Hidden Architecture

Douglas Cardinal

St. Mary's Roman Catholic Church, Red Deer, Alberta, Canada



Elastic Spatial Concept

Friedrich Kiesler

The Endless House, 1950



“...these laughs, these babblings are, it seems, the **childhood language** of Nature...”

Water and Dreams: An Essay On the Imagination of Matter
Gaston Bachelard



A Landscape for Play

Sensory Integration
Motor Skills Development
Social Interaction
Routine and Structure
Improved Focus and Attention
Self Confidence and Esteem

Aerial Site Plan

Sanchez Elementary School

Everett Middle School

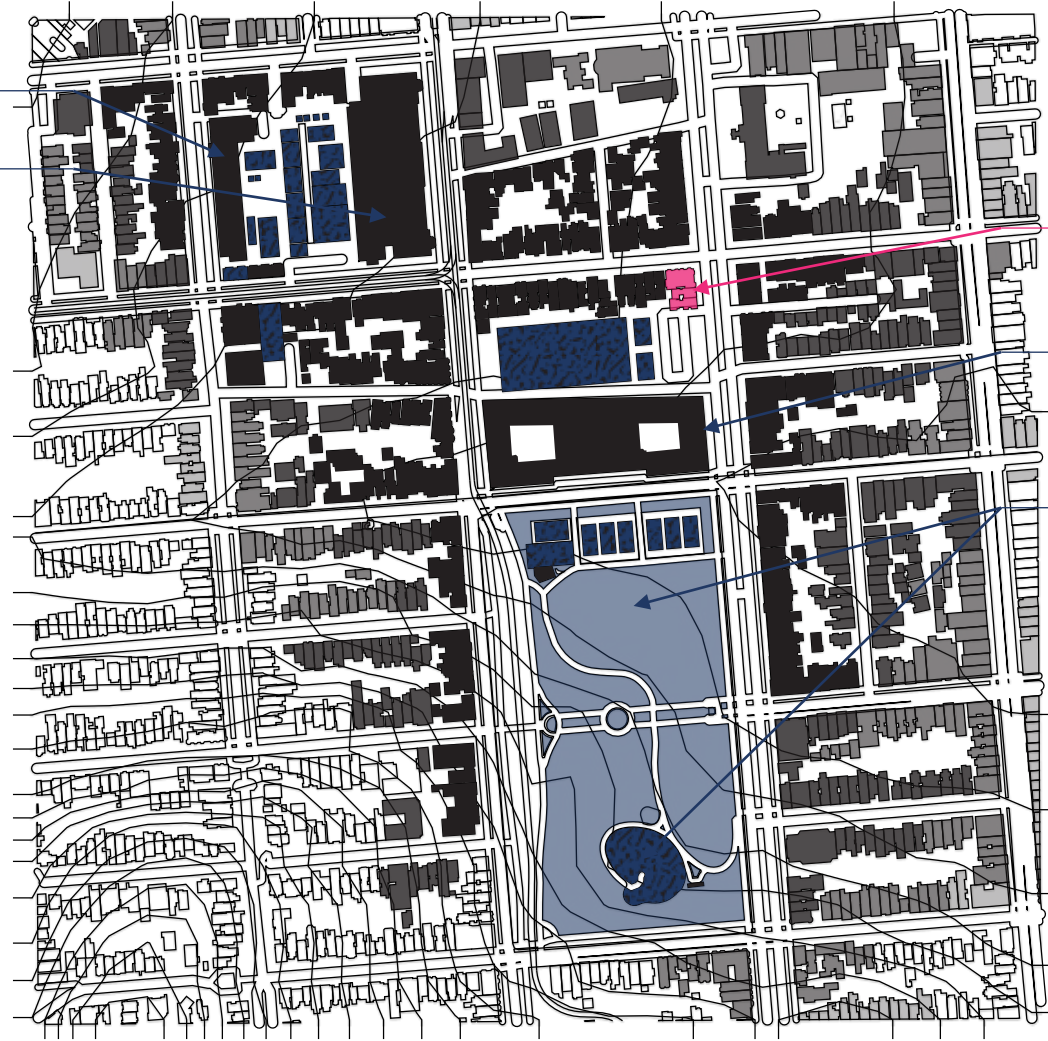
Proposed Site

Children's Playscape Learning Center

Mission High School

Dolores Park

Mission Dolores - Helen Diller Playground

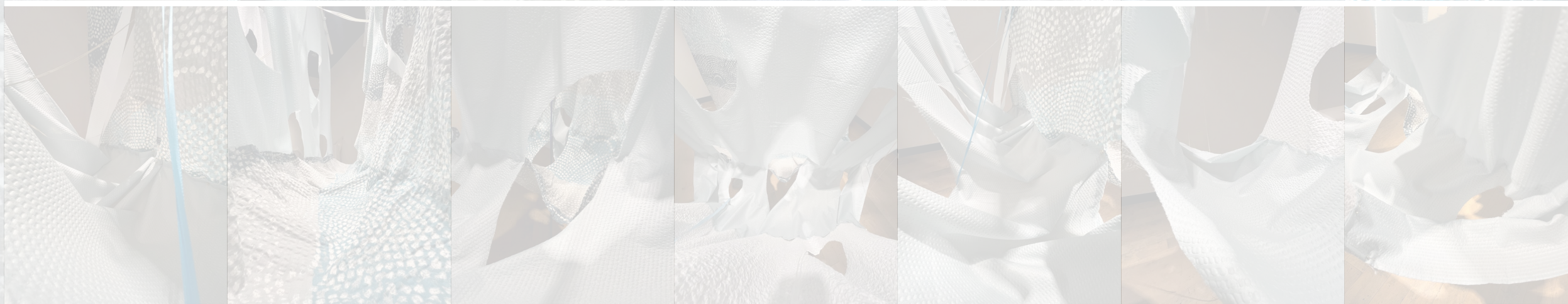
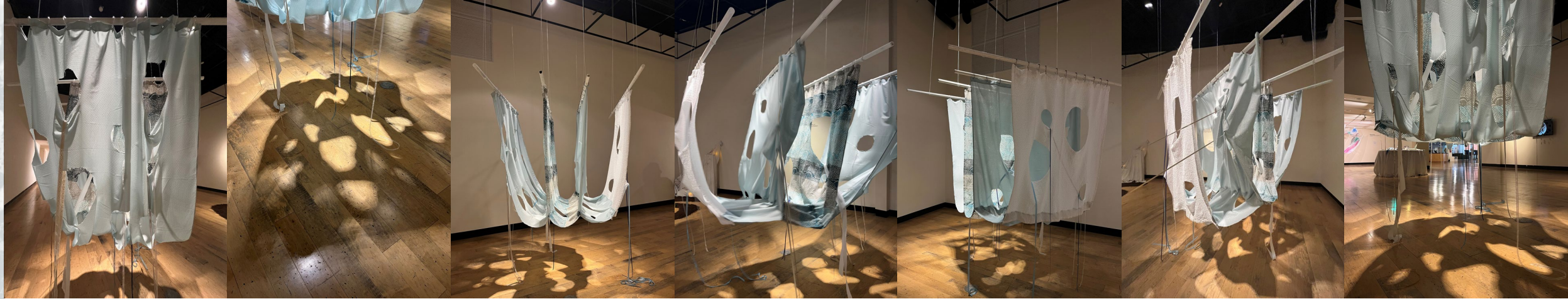


San Francisco, California

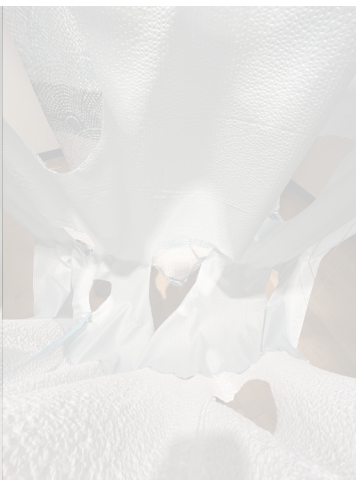
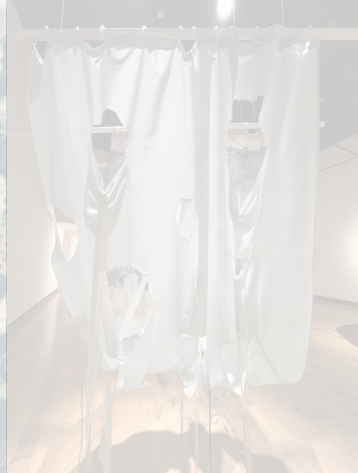
The Artefact
...and the ideas of what could be...







PERSPECTIVE





PERSPECTIVE

FORM



PERSPECTIVE

FORM

SPACE









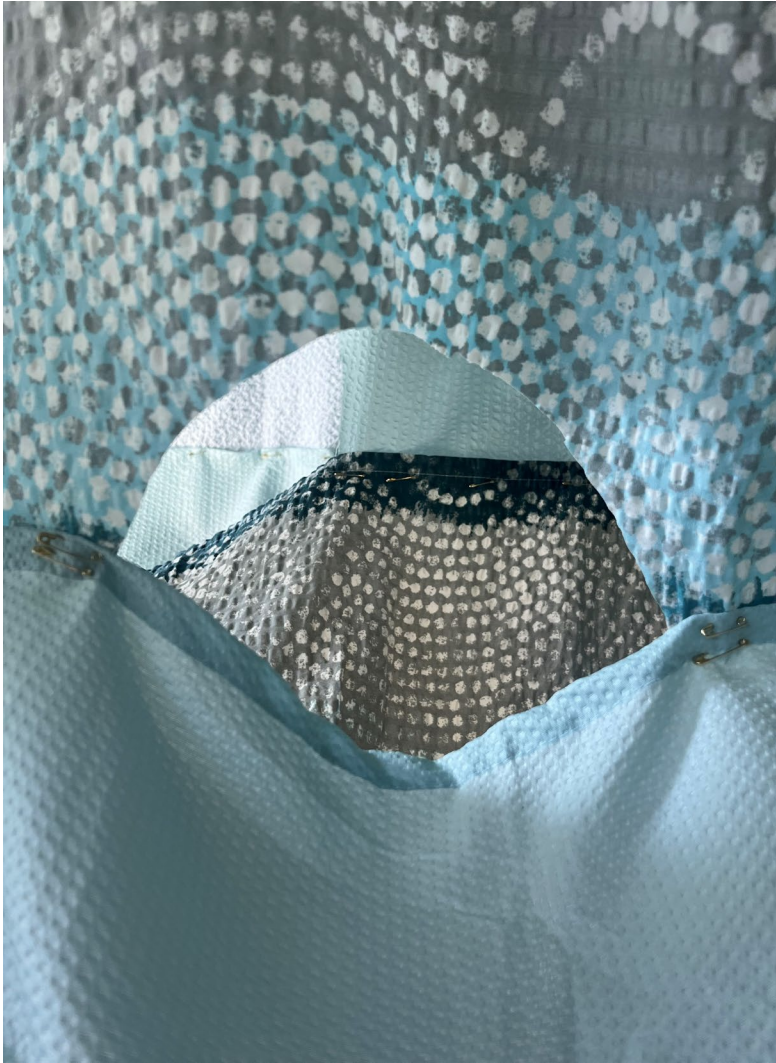


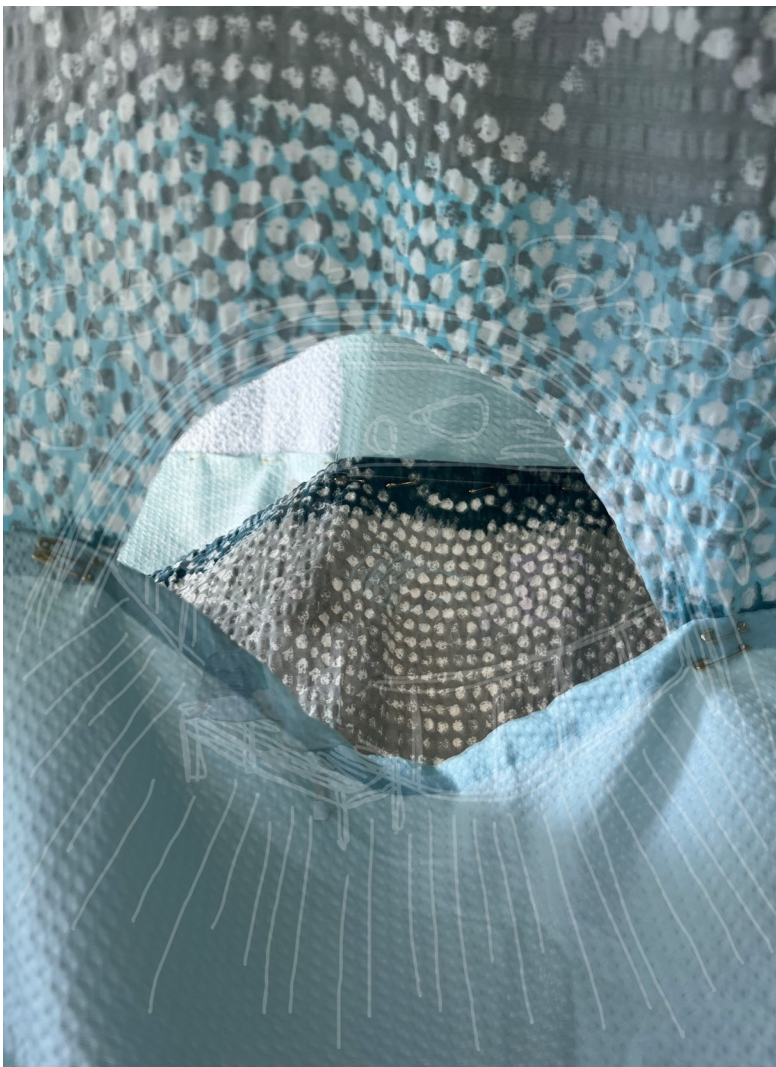


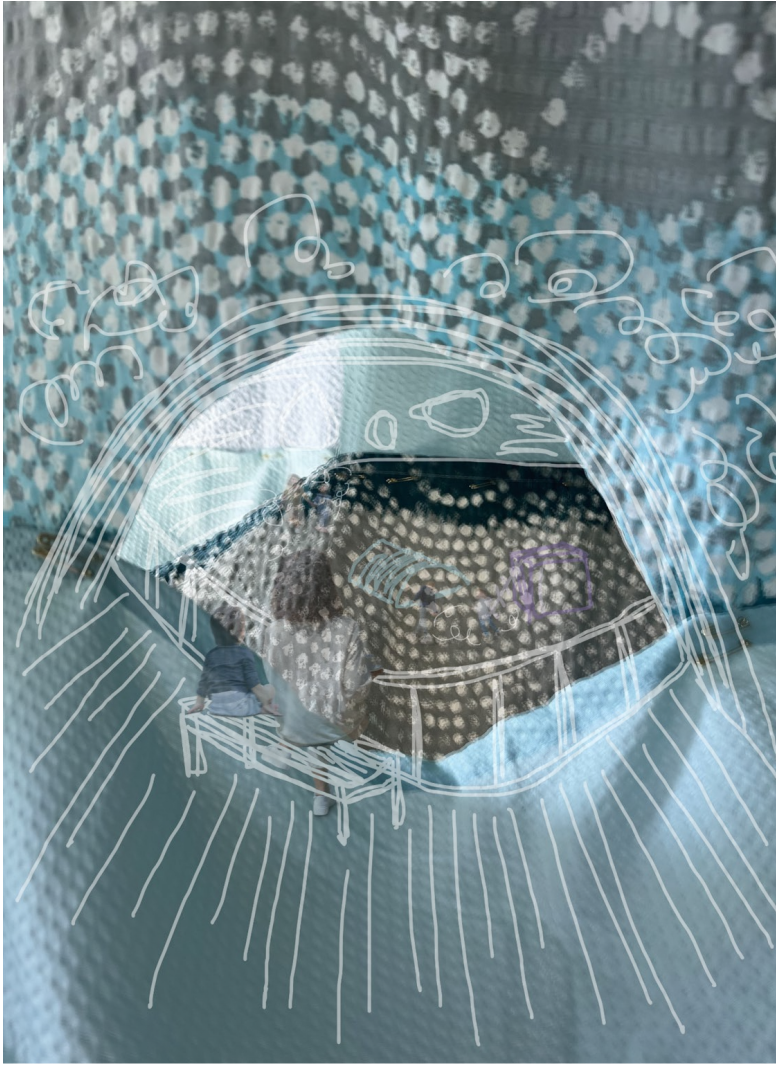


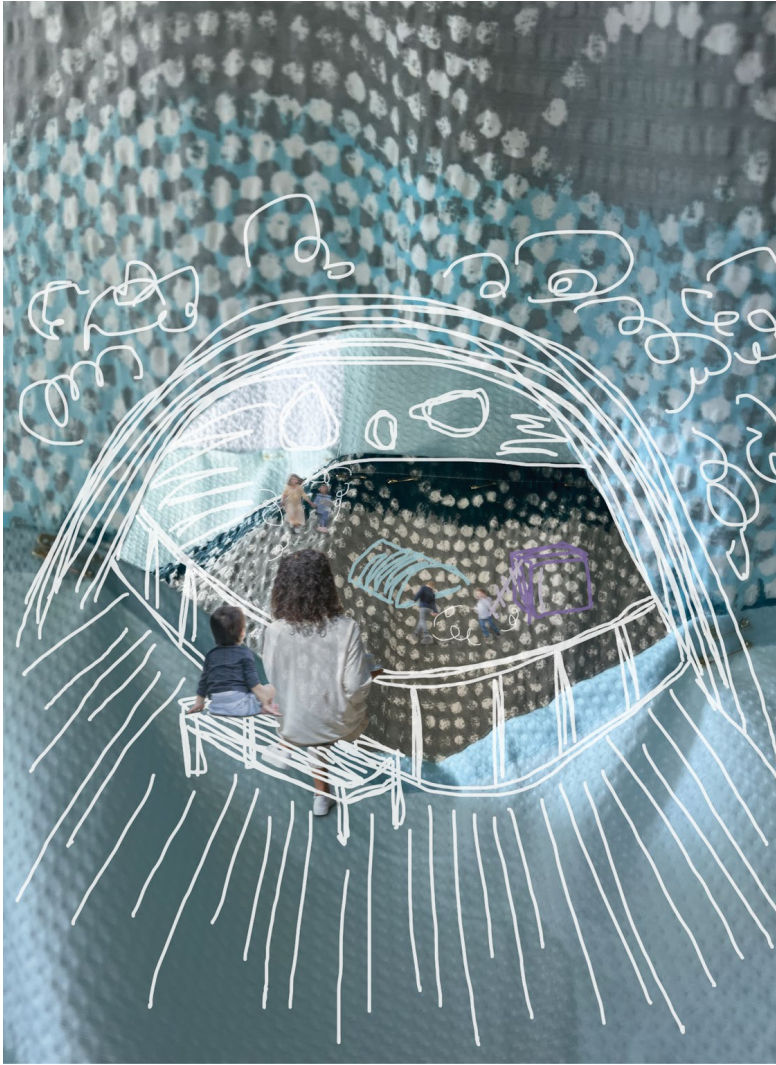


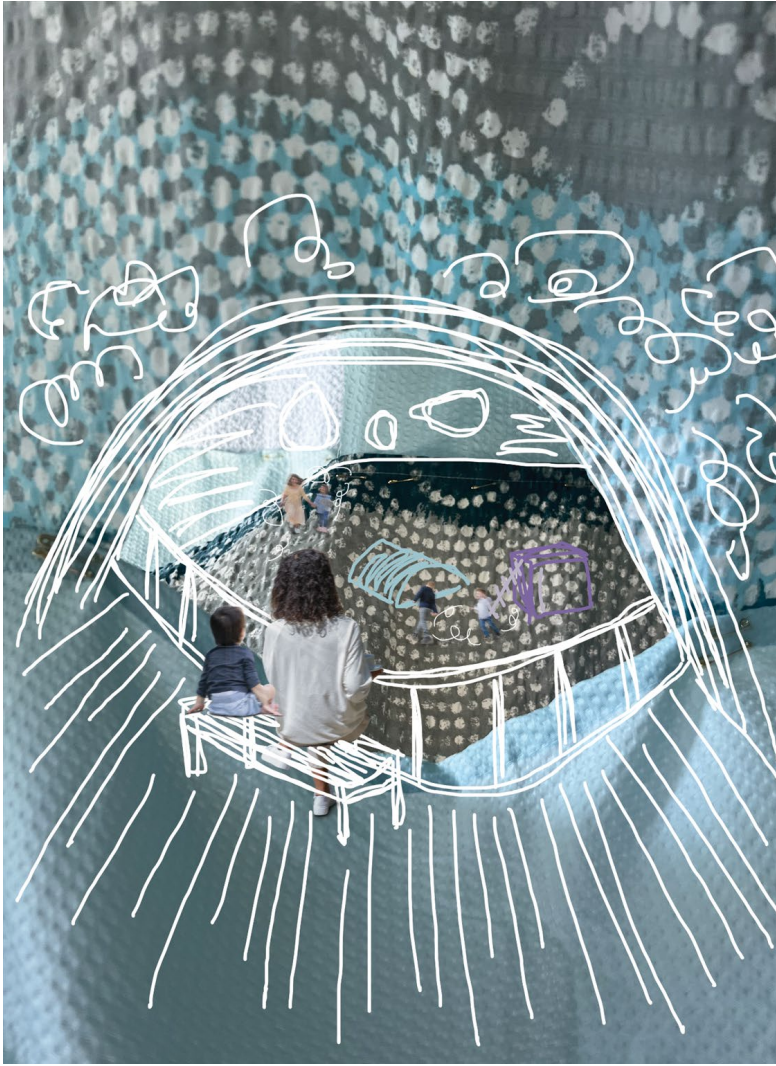


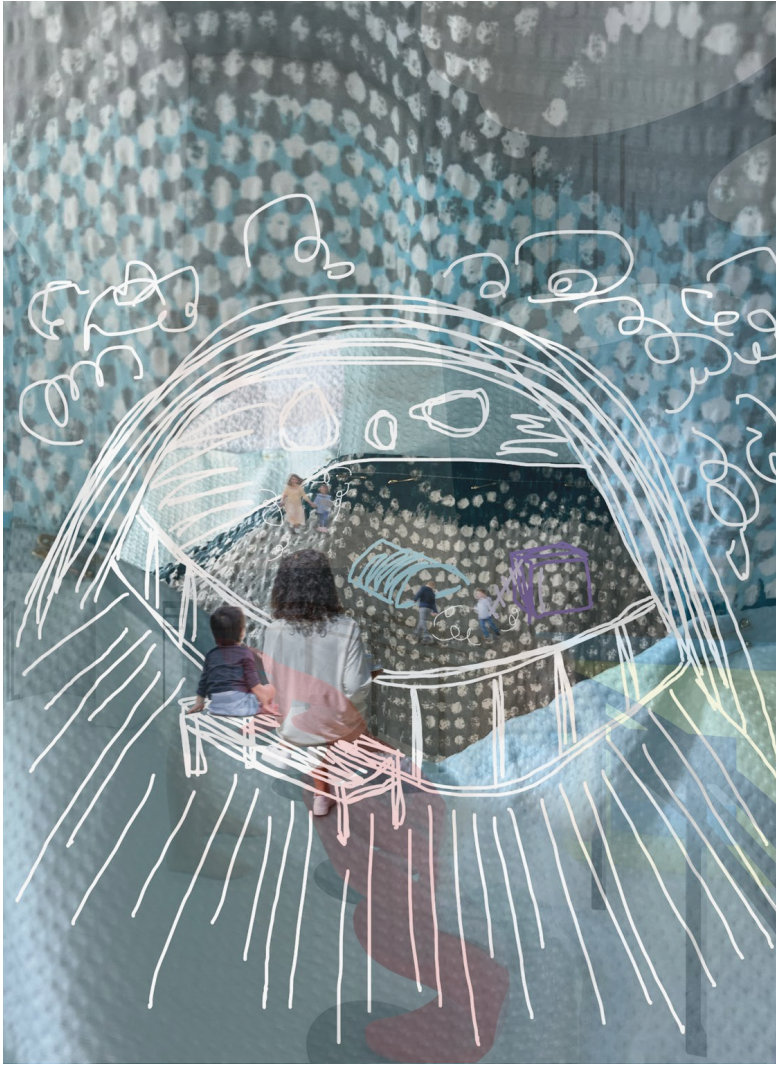












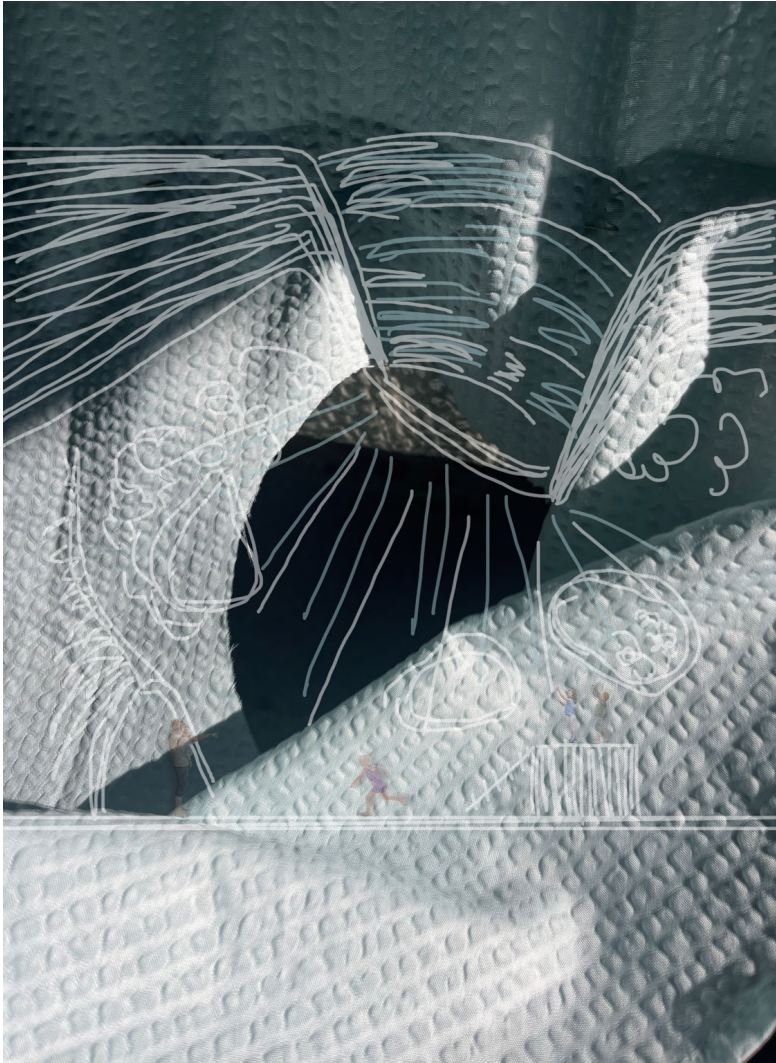


























Learning Stairs



Spectator Balcony



Sensory Play Landscape

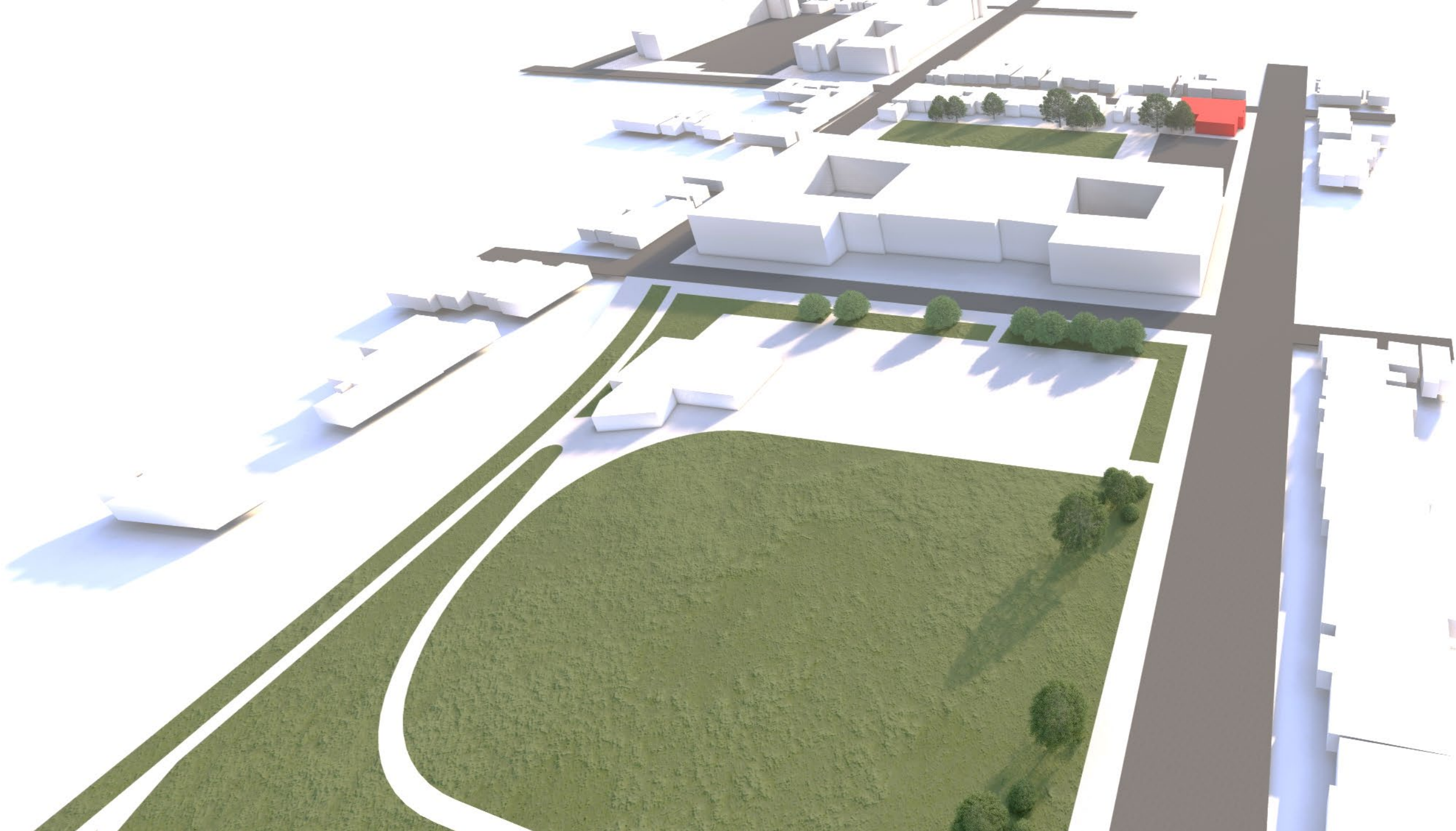
“...the **play** of light...”

“Play is the most elementary function of human life, and culture is quite inconceivable without this element.”

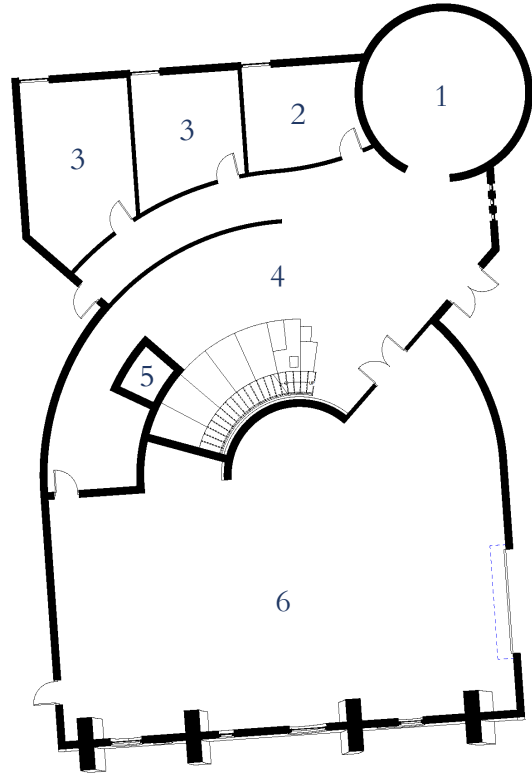
*The Relevance of the Beautiful
and Other Essays*

Hans-Georg Gadamer



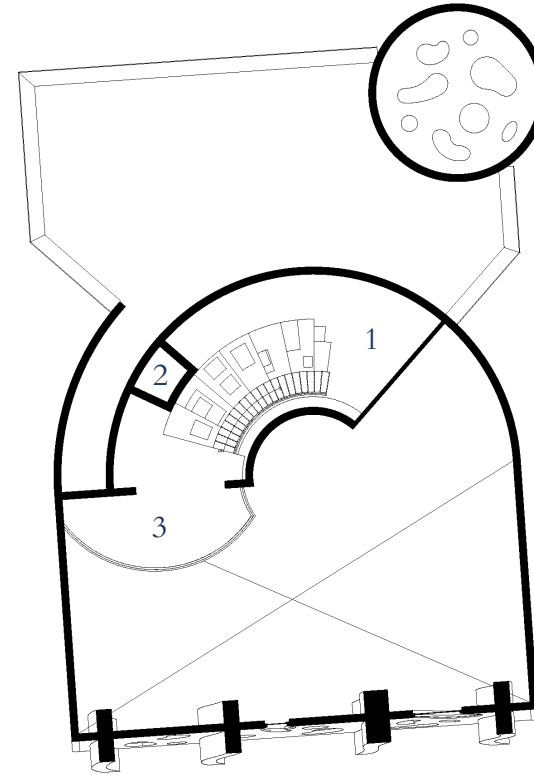






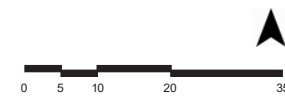
GROUND LEVEL

- Reception Area 1
- Office Space 2
- Locker Room 3
- Learning Stairs 4
- Elevator 5
- Sensory Play Landscape 6



UPPER LEVEL

- Learning Stairs 1
- Elevator 2
- Spectator Balcony 3





East Elevation



