

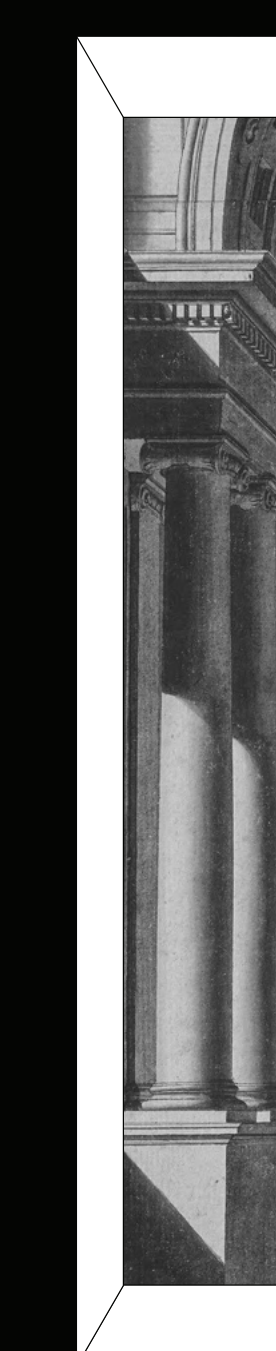
ILLUMINATING CONNECTIONS

A Theatrical Intervention in Urban Loneliness

Amidst the hustle of urban life, an epidemic of loneliness grips our modern cities, casting shadows upon the once vibrant display of community. Before the 19th century, public spaces thrived as stages where every encounter was a theatrical exchange, a space to recognize oneself through the presence of others. However, with time, the cityscape shifted, veiling the human connection behind privatization and specialization.

This project intertwines theater and urban intervention to capture the fleeting moments of human connection. Each scene serves as a bridge between solitude and community, inviting audiences to rediscover the beauty of shared experiences. Through storytelling, we can reignite the flame of interaction, breathing life into forgotten urban corners.

Located in the once-vibrant neighborhood of Cabrini-Green in Chicago, IL, this project will act as a new foundation for this redeveloping community, offering a beacon of hope amidst its storied past. It will function as a community hub, a stage for the play of urban life, where all are invited to participate. This redevelopment marks a unique opportunity to honor the past while forging a new path forward, bridging divides, and fostering belonging for generations to come.



GALLI BIBIENA DRAWINGS

Inspiration for this project comes from historical examples from before the 19th century, which helps us to understand the differences in how people interacted and how poetic language influenced design. One of these examples comes from the Bibiena family who were most famously recognized for their ornamental theatrical settings and other spaces across Europe in the 17th and 18th century.

Another example is the origins of pictures and painting through shadow tracing. A famous story of a woman tracing the outline of her loved one who was going abroad, so she could remember him more clearly. This project uses shadows and outlines to remember what was once located on this site, four towers of the Cabrini-Green neighborhood, which was once a strong community that has since been removed.

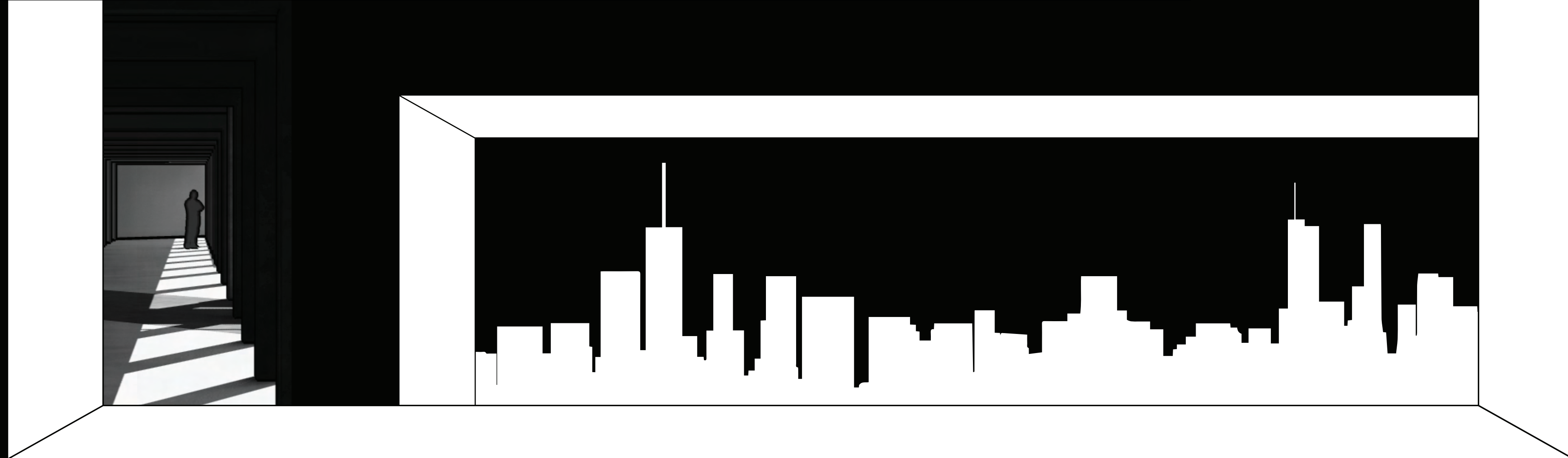
Shadow is also used to capture the layered theatrical interventions throughout the site to show connections between people and their communities. Creating a space for members of a community to regularly cross paths and interact with one another is important for it to flourish and stay connected, which is exactly the main idea behind this project.



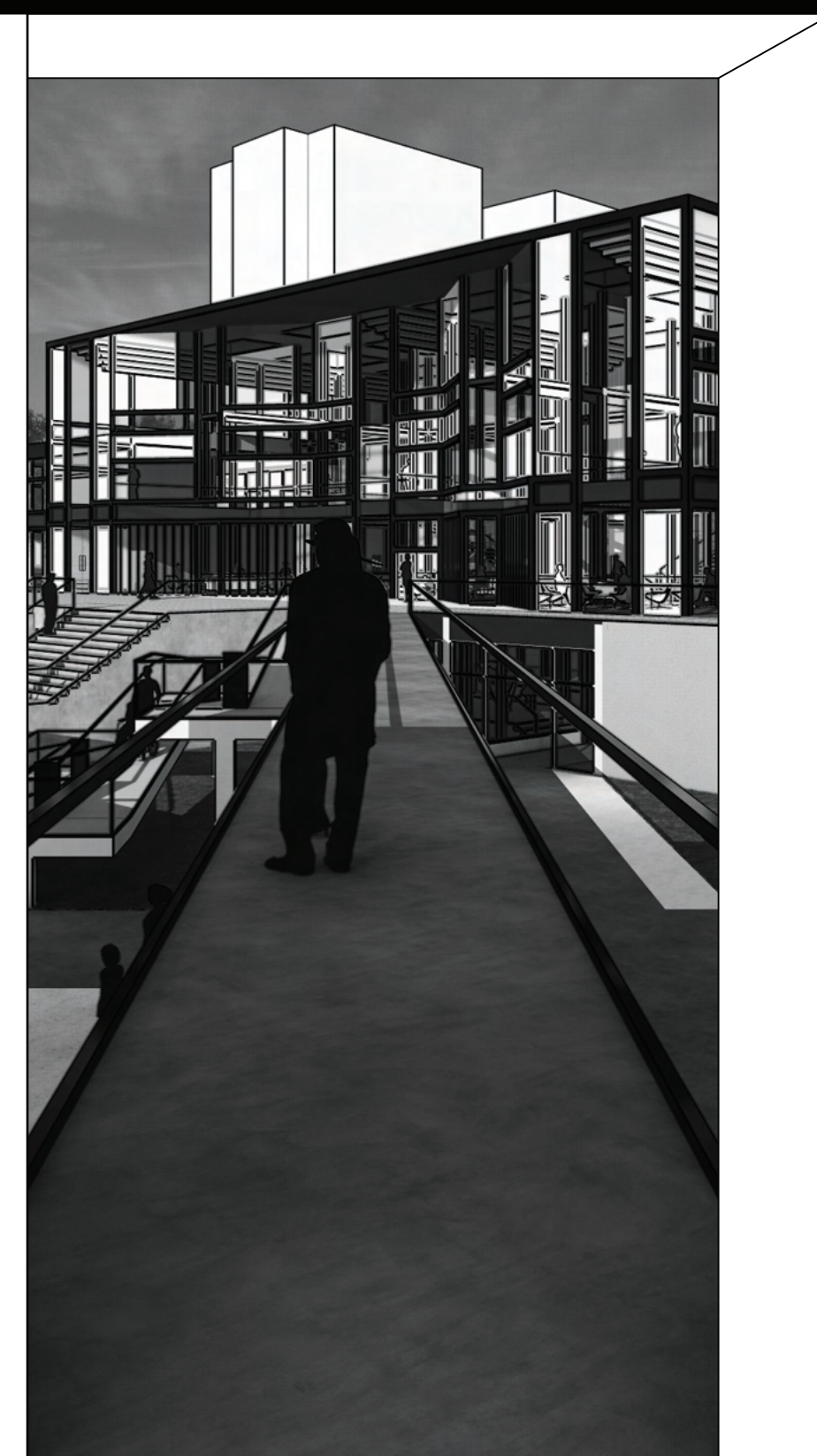
1.

2.

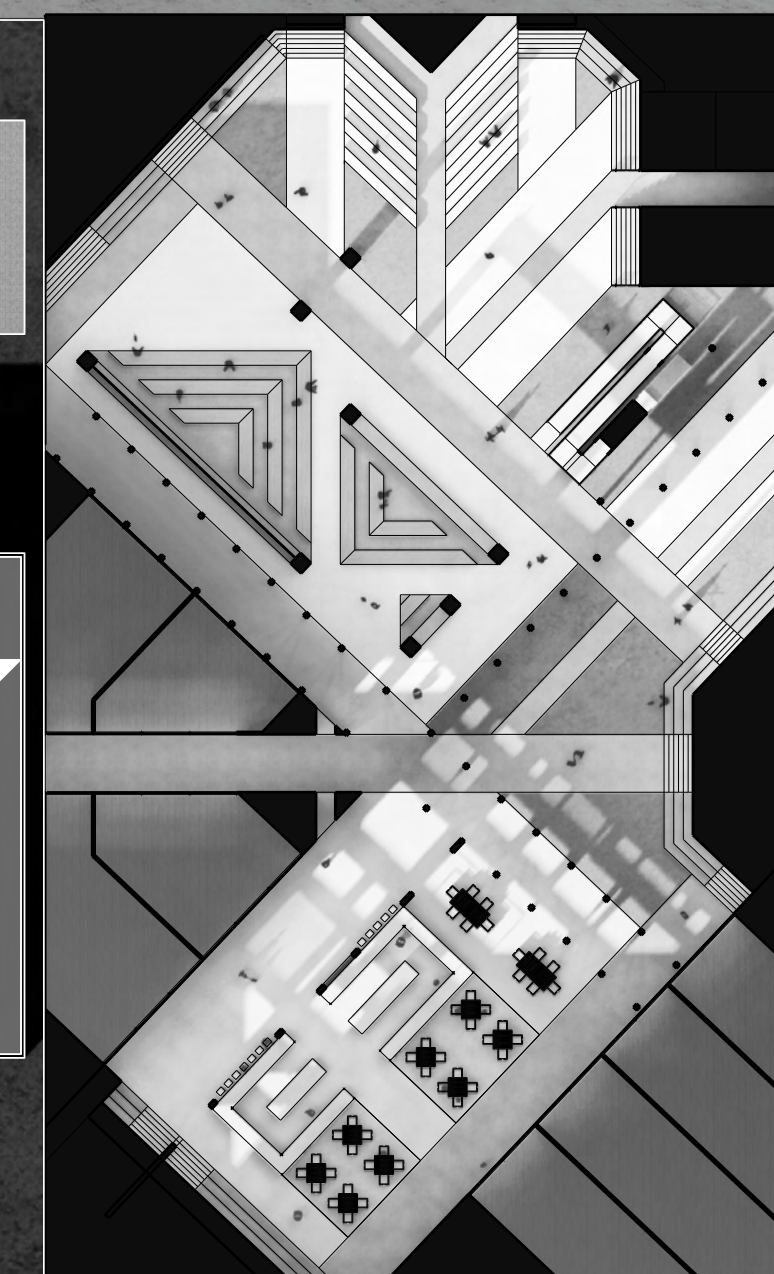
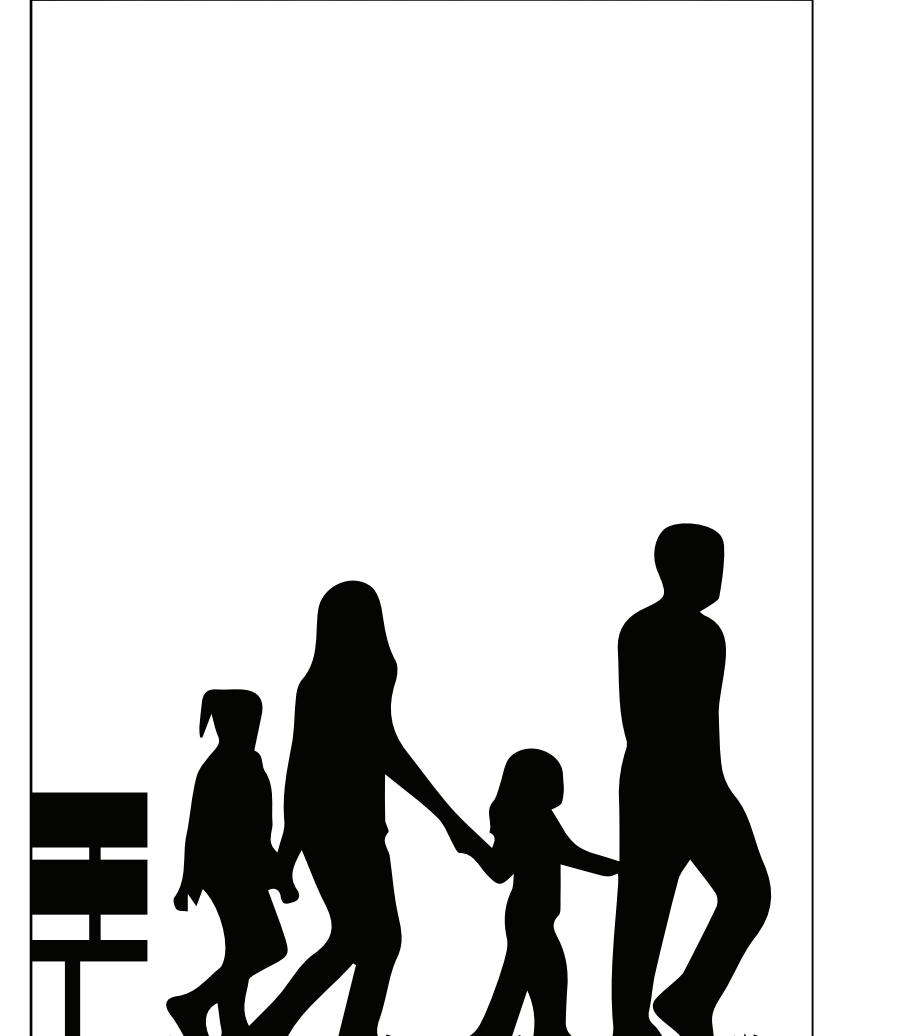
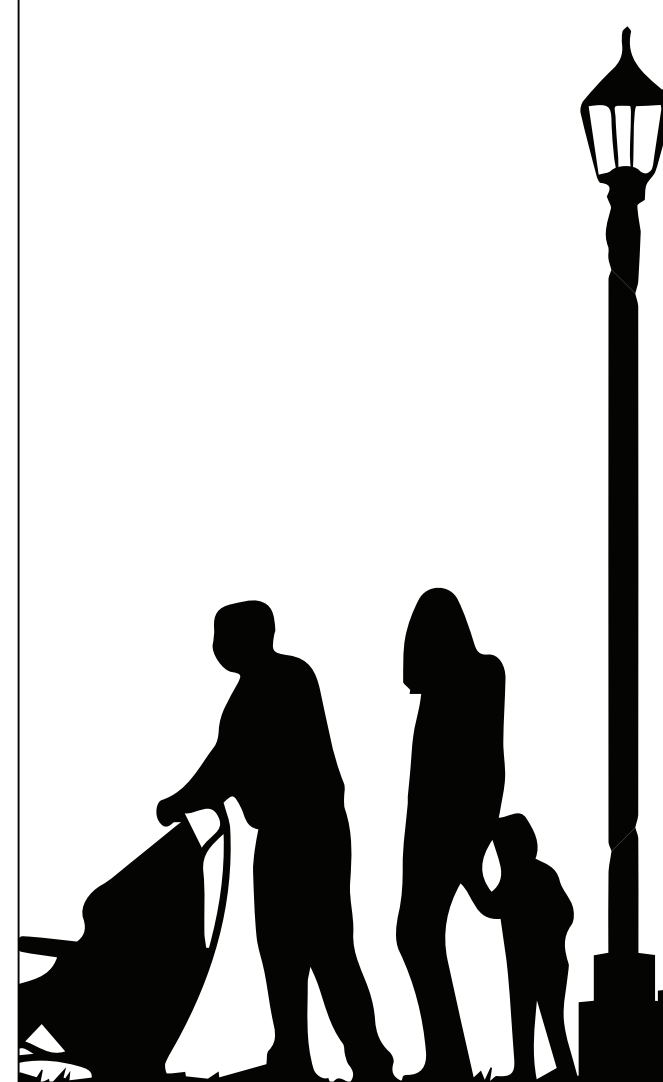
3.



Throughout this project, screens are intentionally positioned to enhance our awareness of presence, absence, and return. This concept is inspired by the site's history, which once housed a vibrant community rich in connections. Unfortunately, flawed urban planning led to the community's displacement. Now, with this project, the aim is to restore and strengthen these bonds.



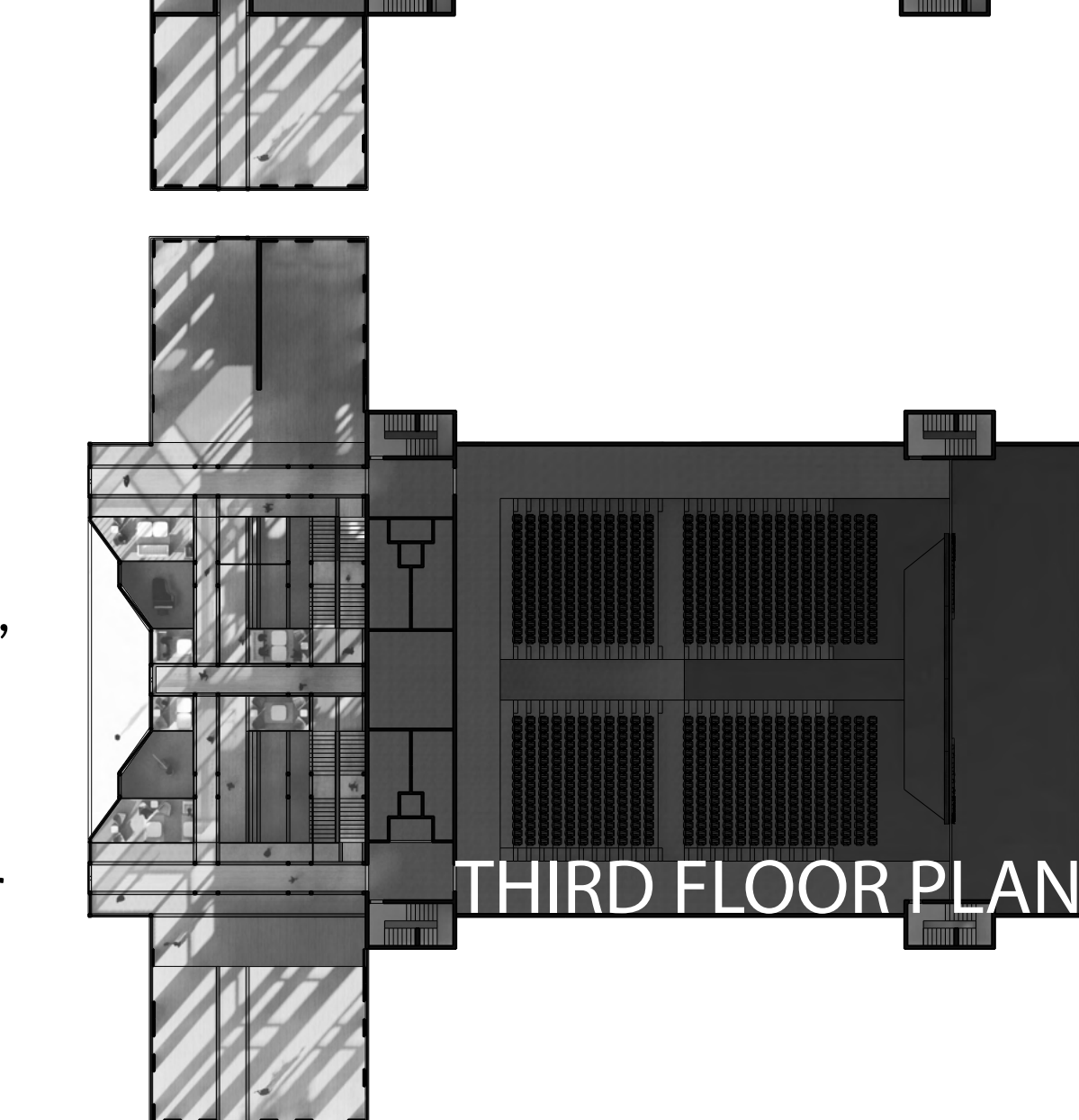
This project frames everyday urban interactions to highlight the evolution of theater and public spaces. Before the 19th century, theater was a communal activity, mirroring the inclusive nature of public life where everyone actively participated. In contrast, modern theater typically involves an audience quietly observing from their seats—a reflection of today's public life, where individuals often move through spaces in silence.



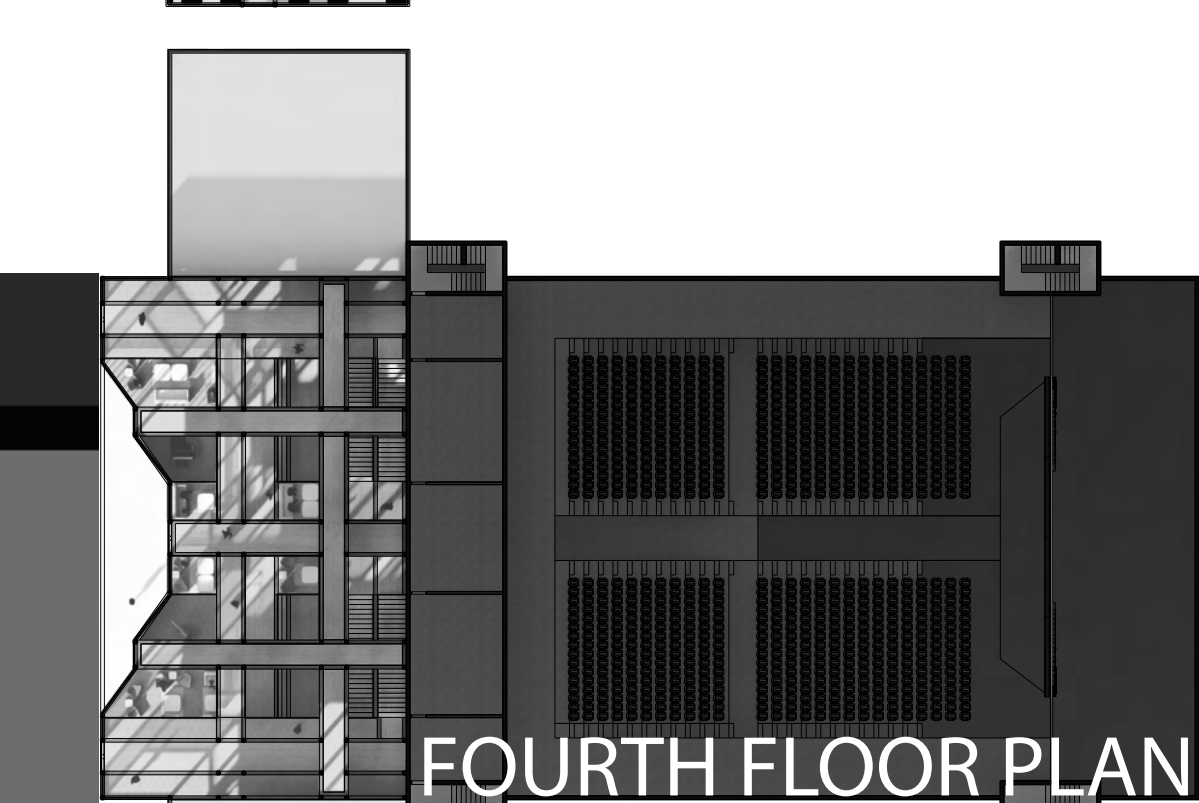
FIRST FLOOR PLAN



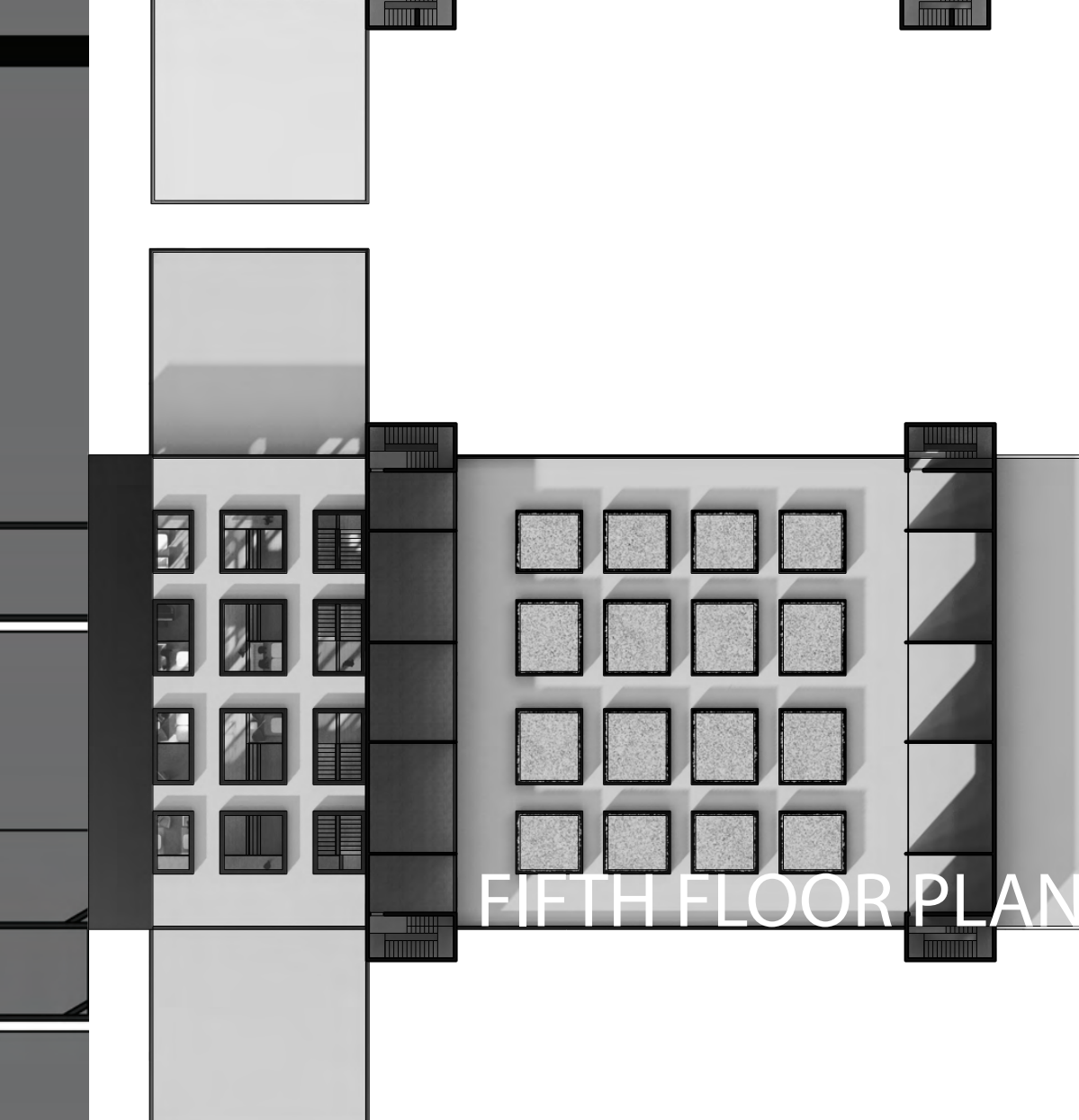
SECOND FLOOR PLAN



THIRD FLOOR PLAN



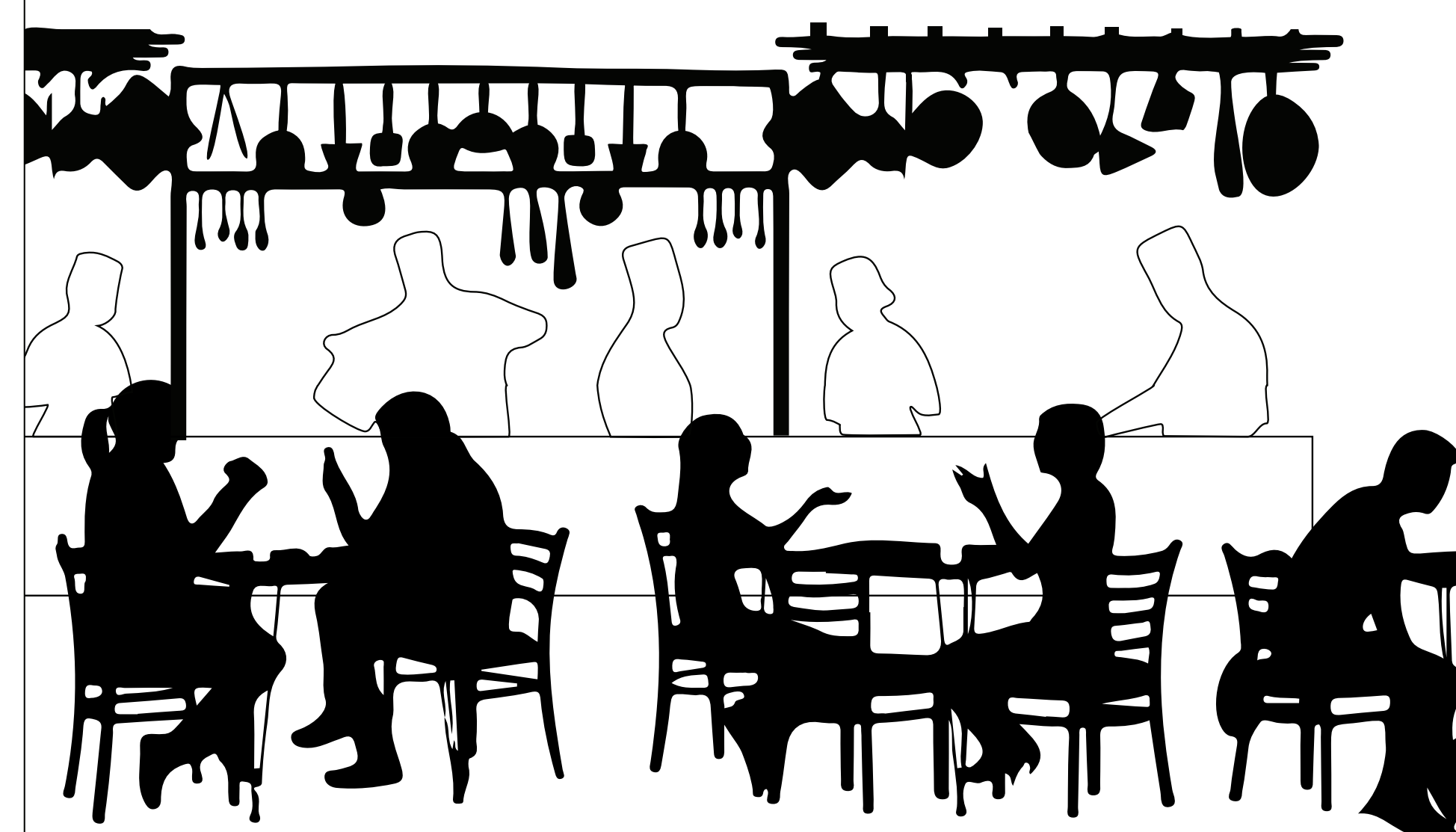
FOURTH FLOOR PLAN



FIFTH FLOOR PLAN

The Cabrini-Green Performing Arts Center features a grand lounge area where guests can gather before and after performances, creating a welcoming atmosphere for social interaction. Additionally, the center has multiple practice spaces, an intimate performance area, and a large theater with seating for approximately 1,000 people, accommodating a range of events from small recitals to grand productions.

The southern half of the site is a blur between indoor and outdoor space which houses two community kitchens with seating nearby. Surrounding these kitchens are studio and teaching spaces for artists to create and community members to build new skills. These spaces serve as hubs for artistic expression and skill sharing, fostering community growth by offering a diverse array of both practical and artistic learning opportunities.



4.