



MEETING INEVITABILITIES;

How Architecture Can Aid in Our Acceptance of Death and Improvement of Life

Caitlyn Kolling

ARCH 772 Thesis Advisor: Stephen Wischer

BACKGROUND

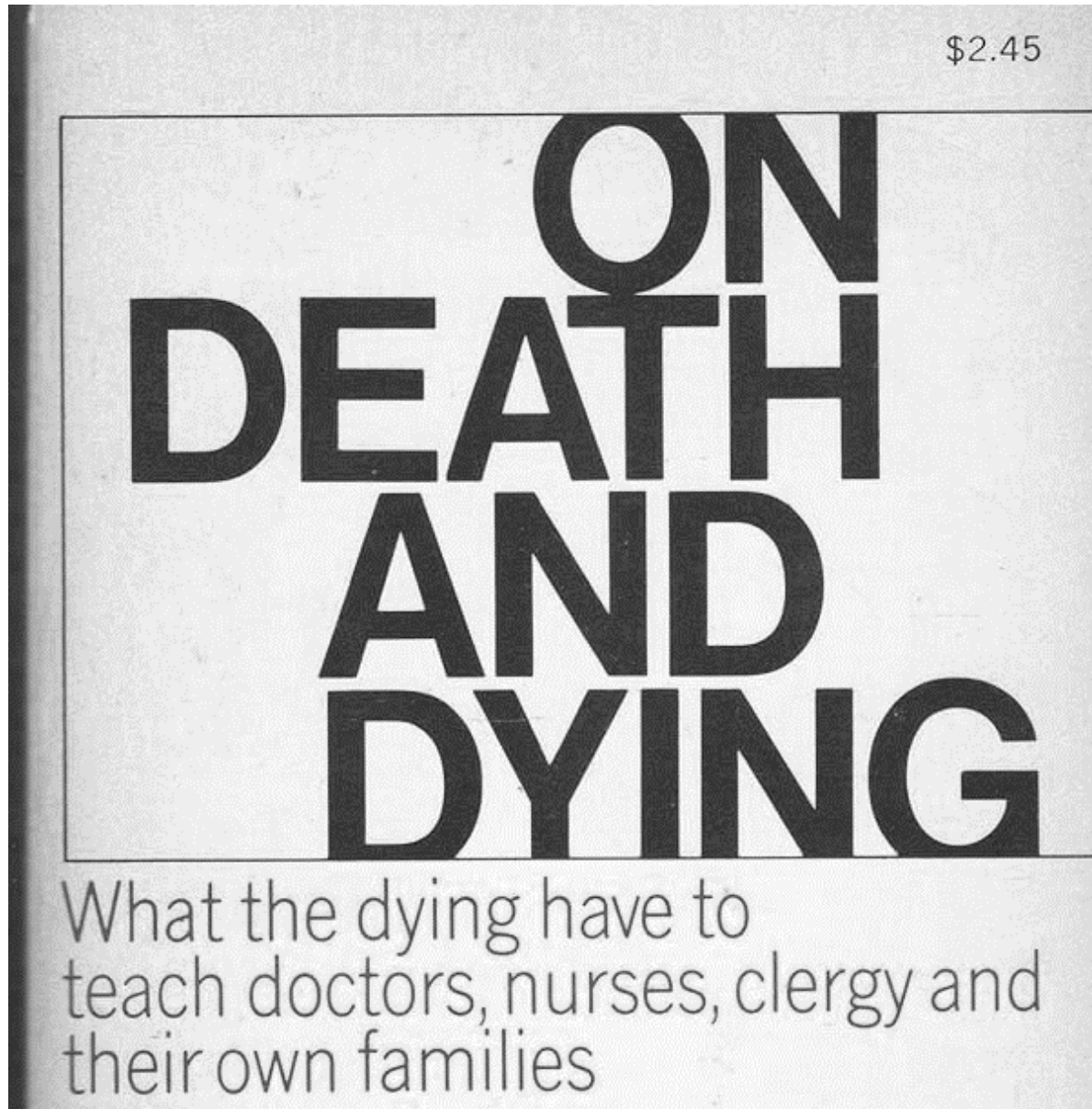


Figure 1.1

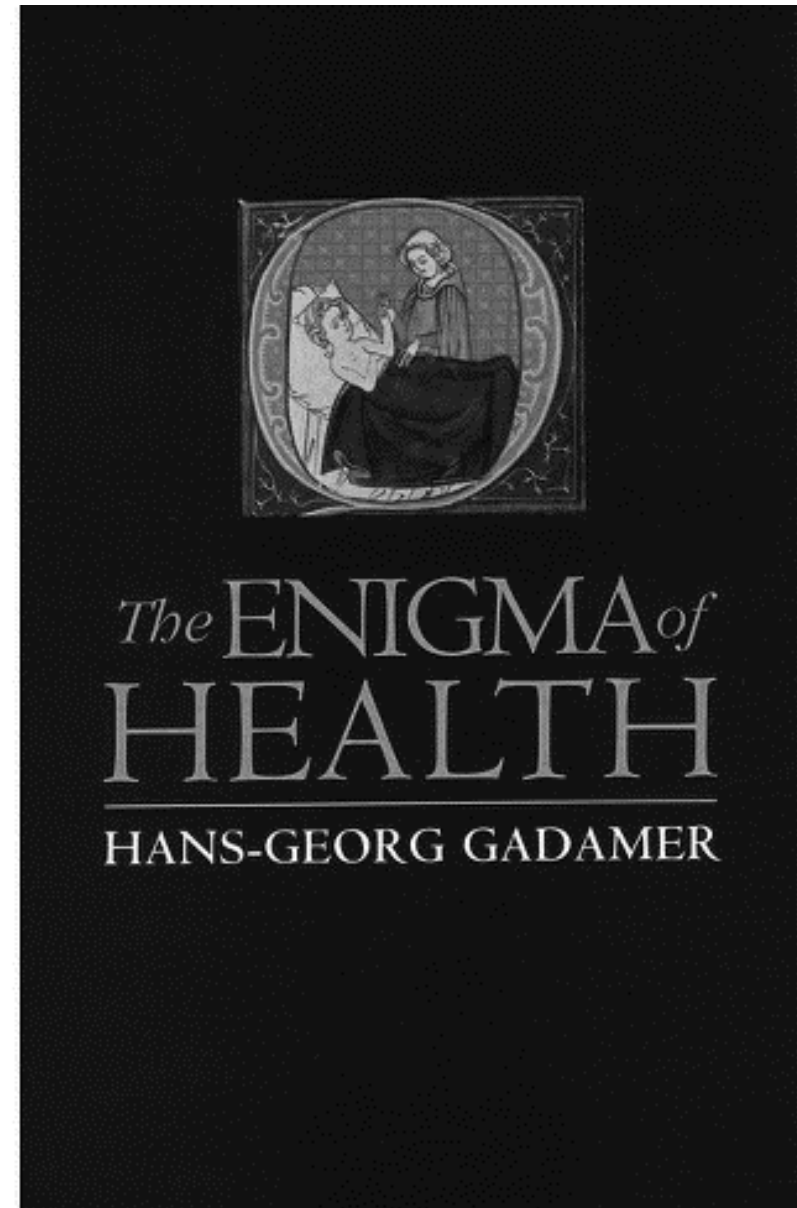


Figure 1.2



Figure 1.3



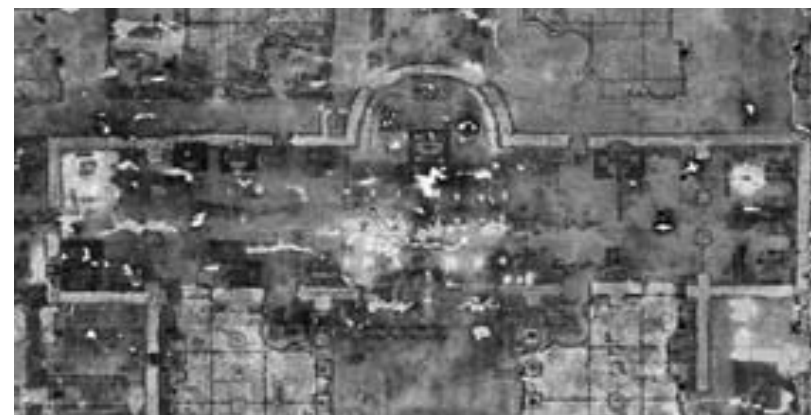
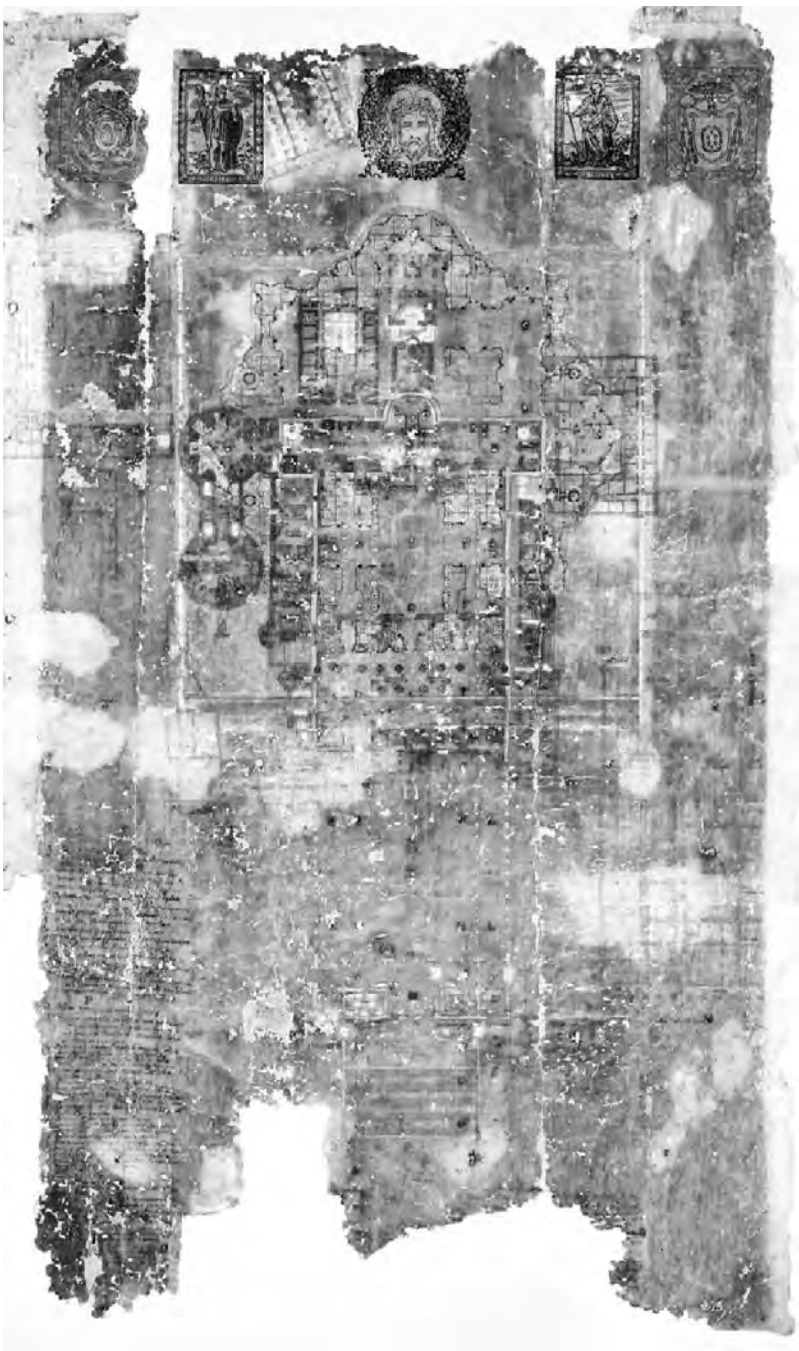
Figure 1.4



Figure 1.5



Figure 1.6

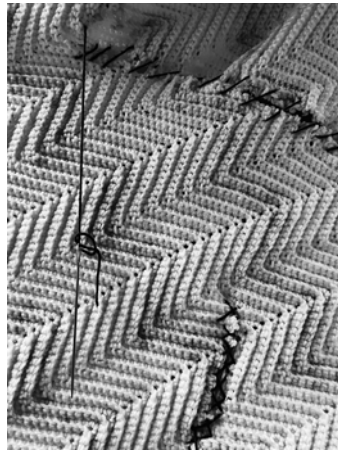
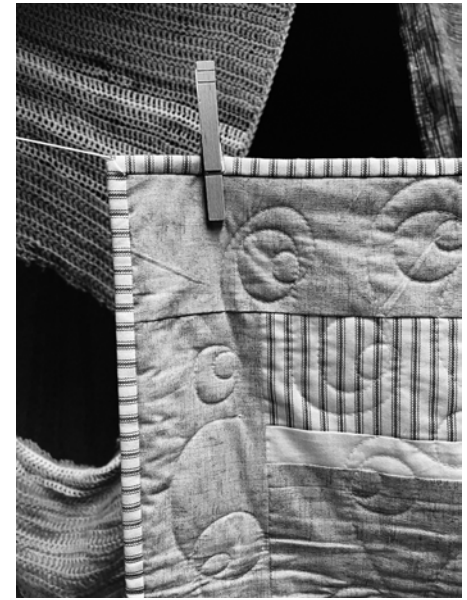
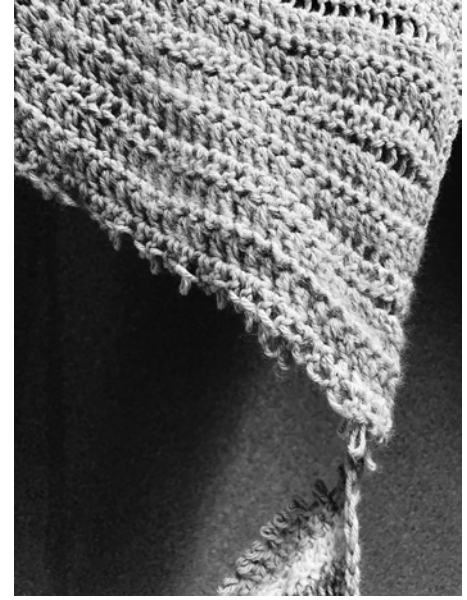
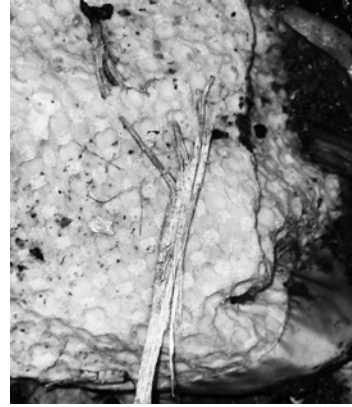


Figures 1.7



Figure 1.8

ARTEFACT

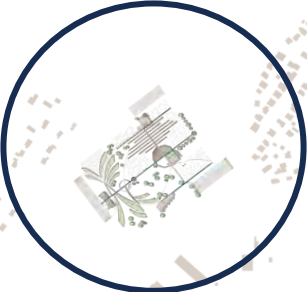




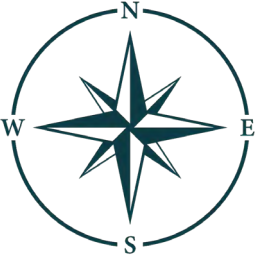
SITE LOCATION

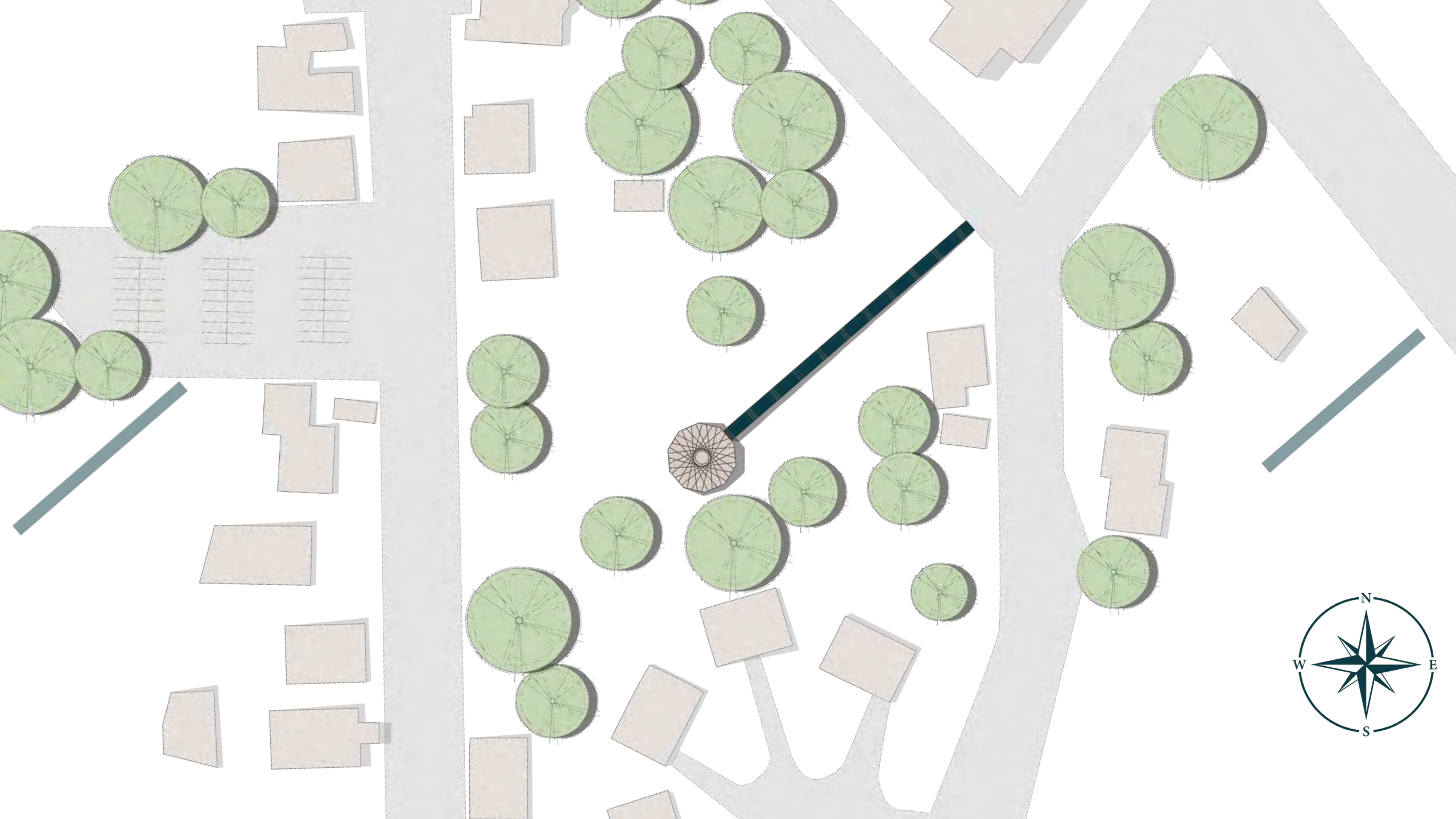


FORT LEE



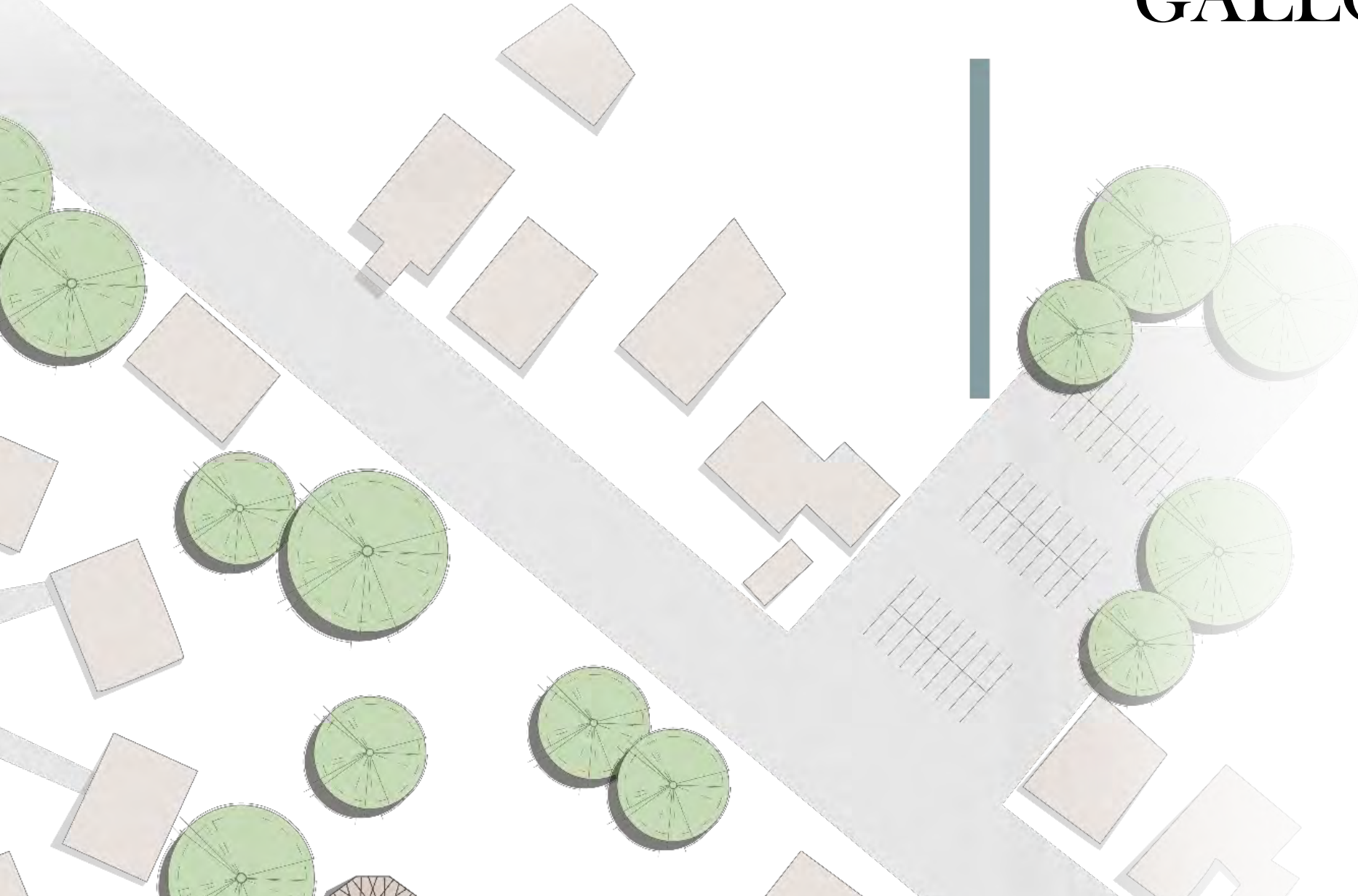
PROCTOR'S LEDGE



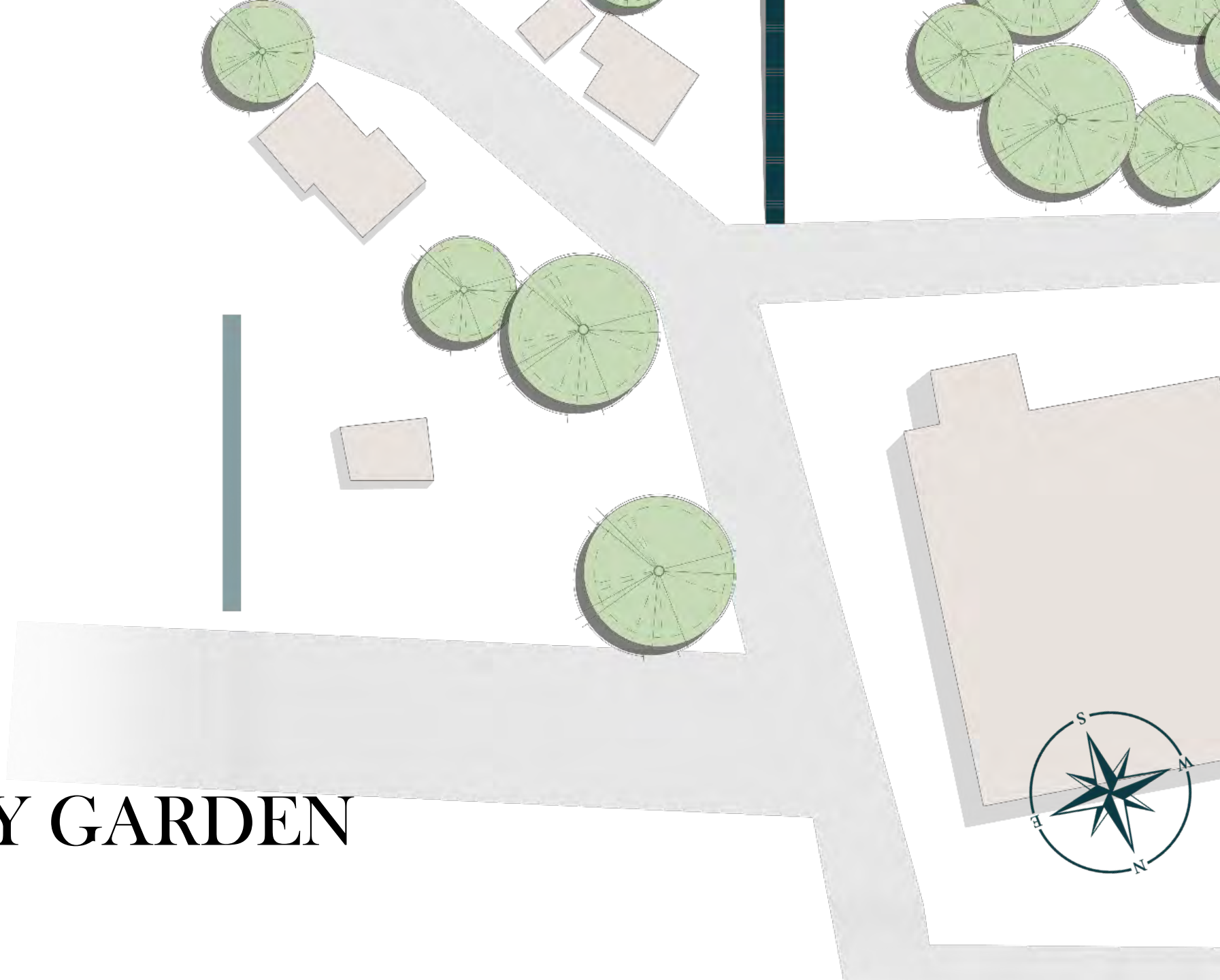




GALLOWS HILL



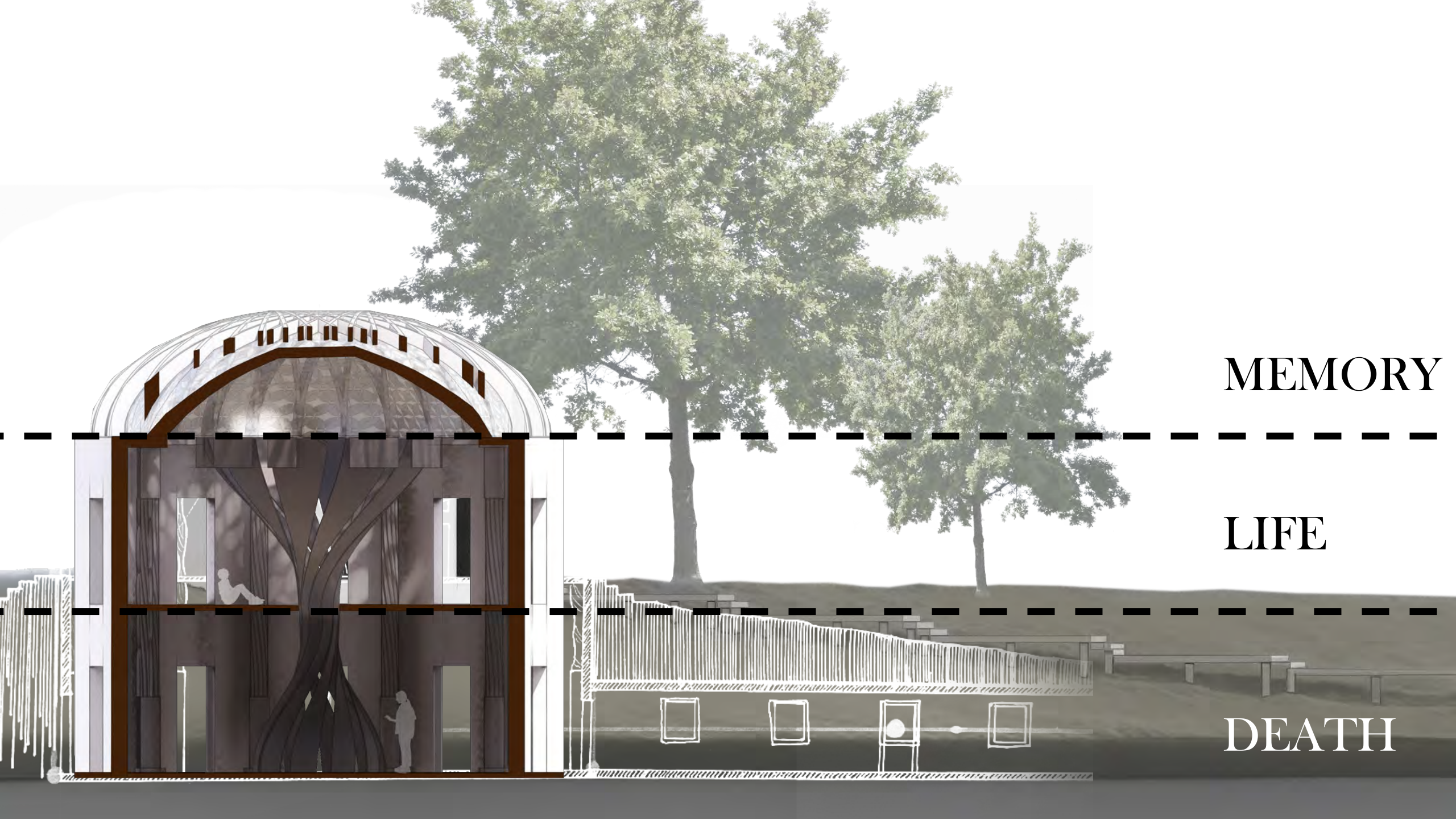
COMMUNITY GARDEN







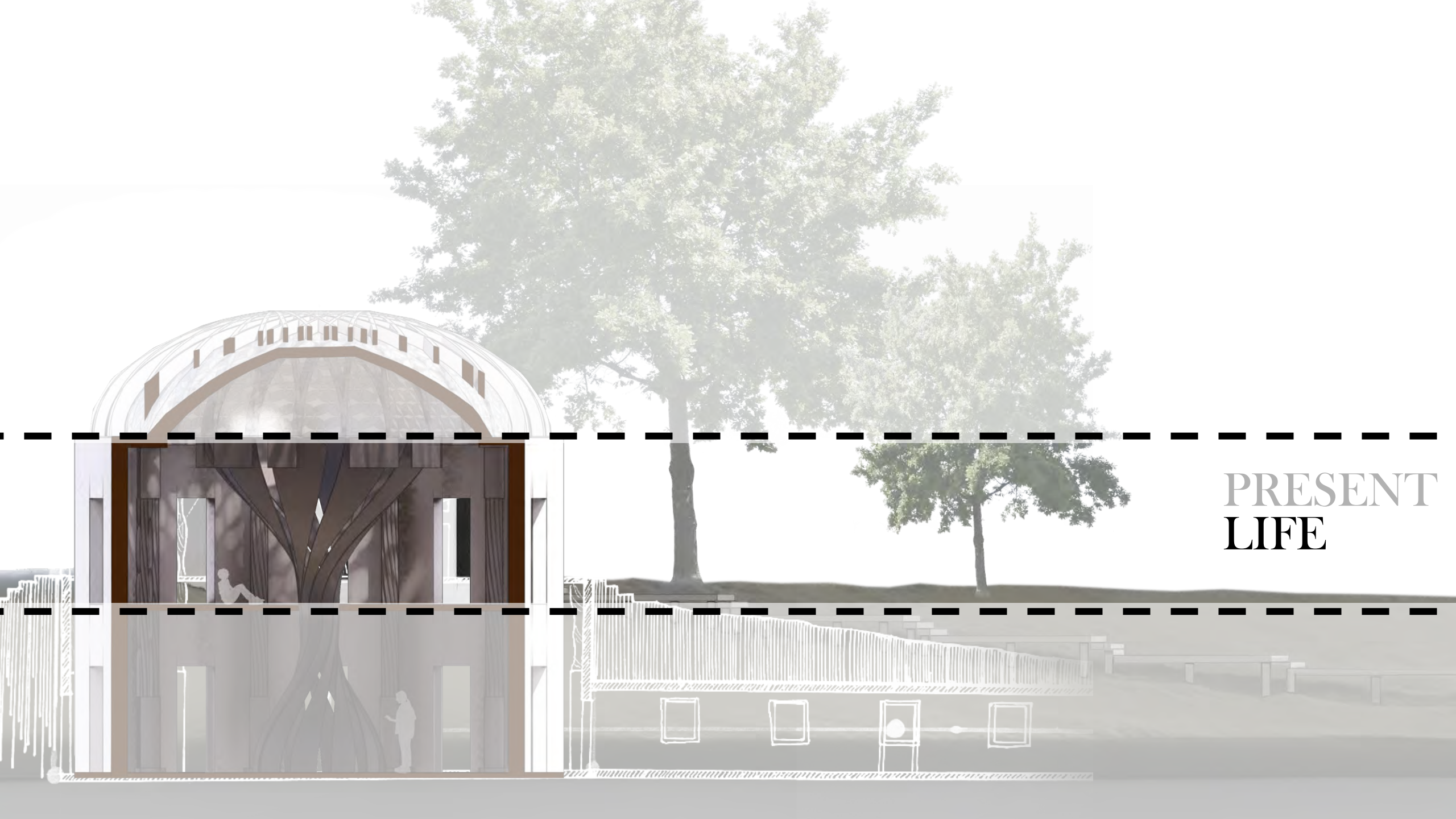




MEMORY

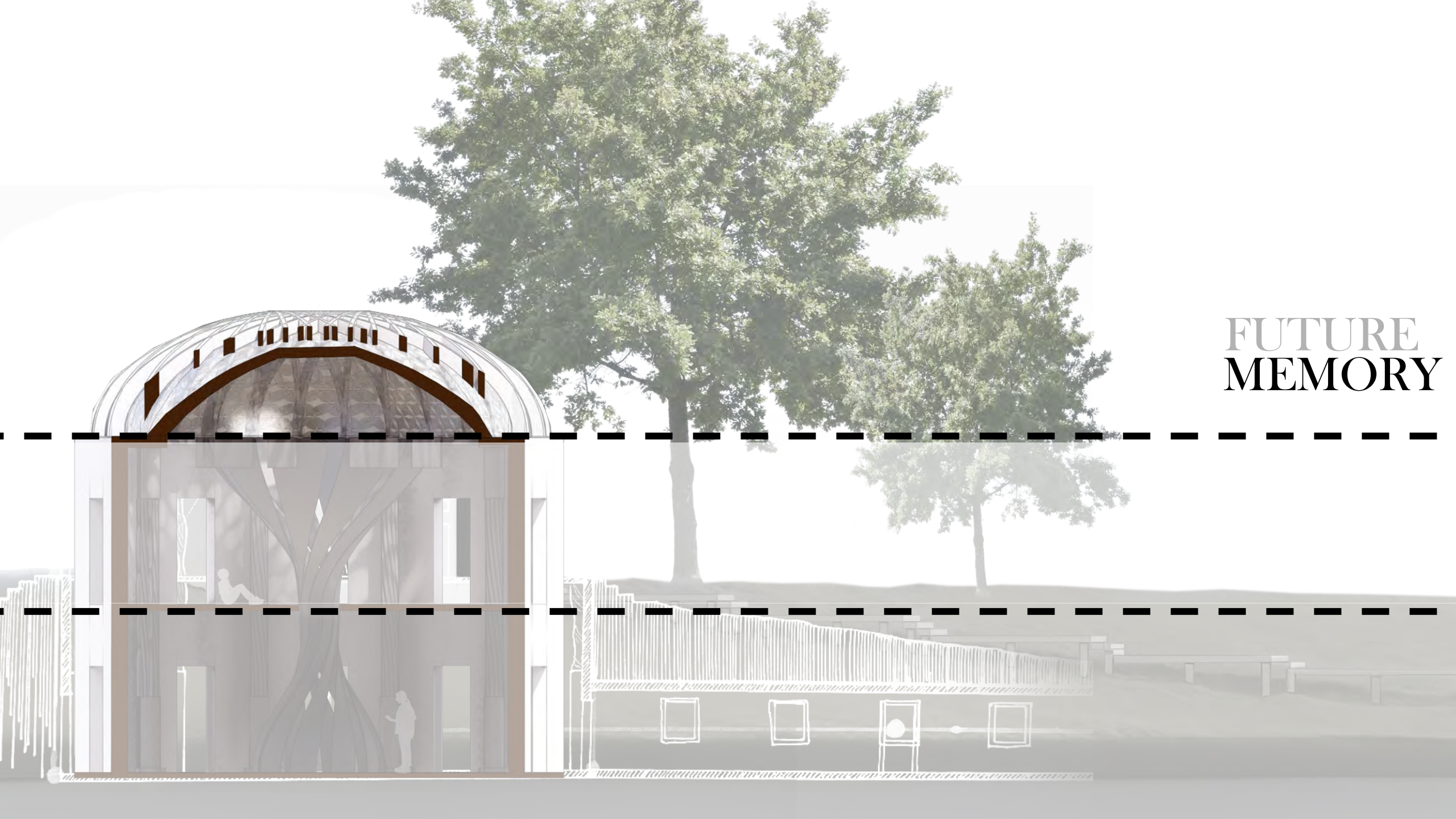
LIFE

DEATH

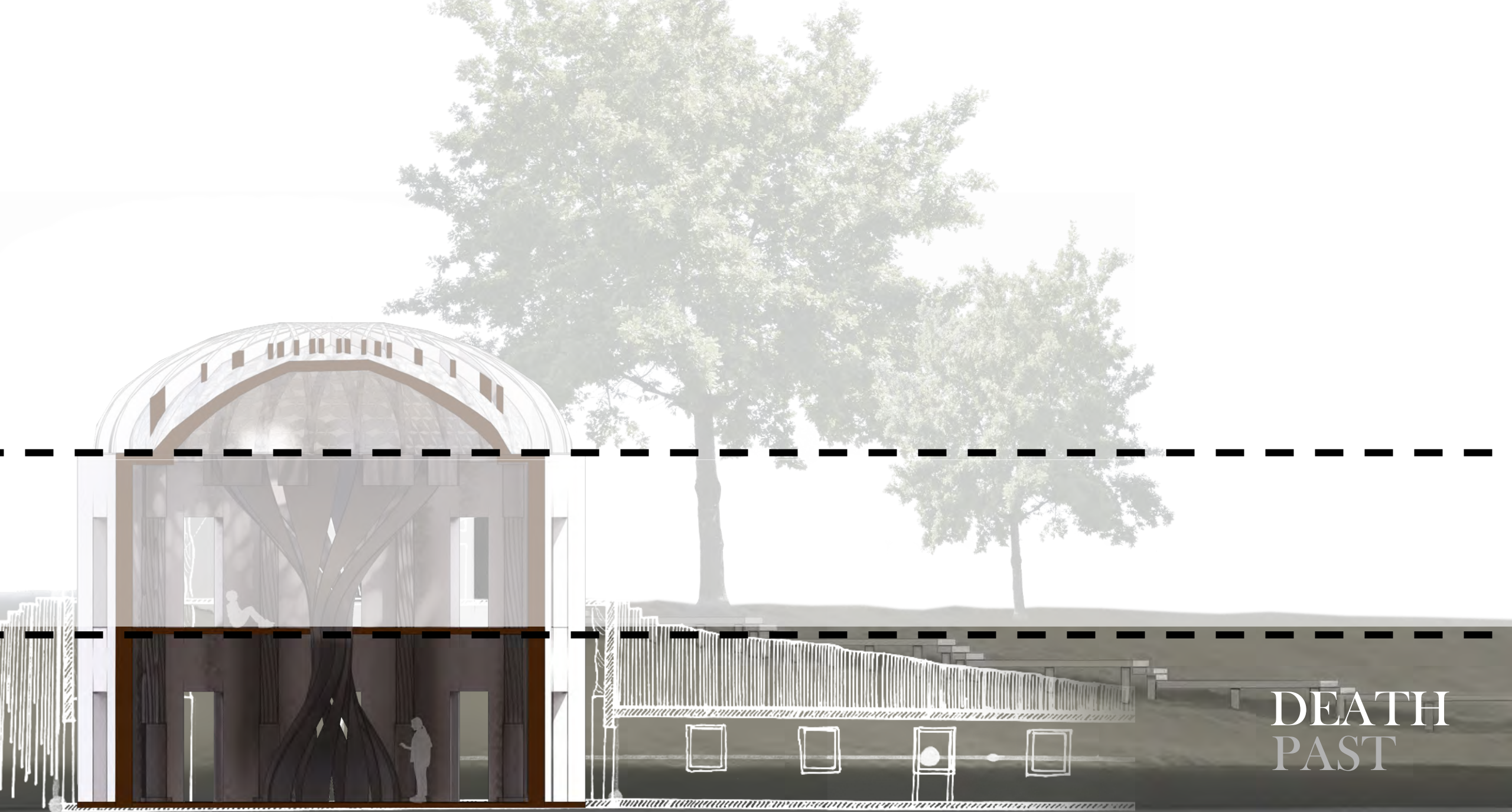


PRESENT
LIFE

FUTURE MEMORY







DEATH
PAST



PROCTOR'S LEDGE



FORT LEE

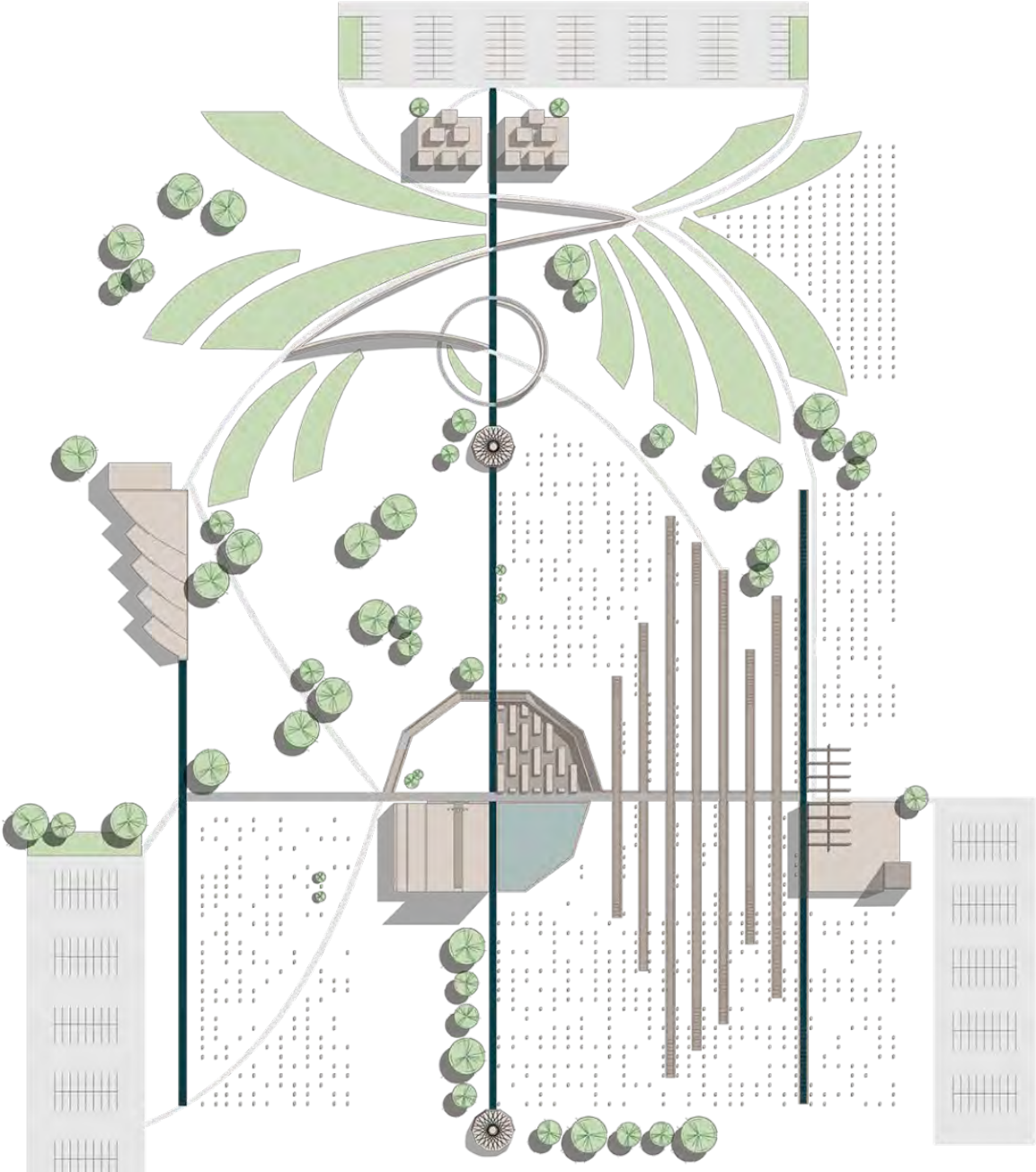
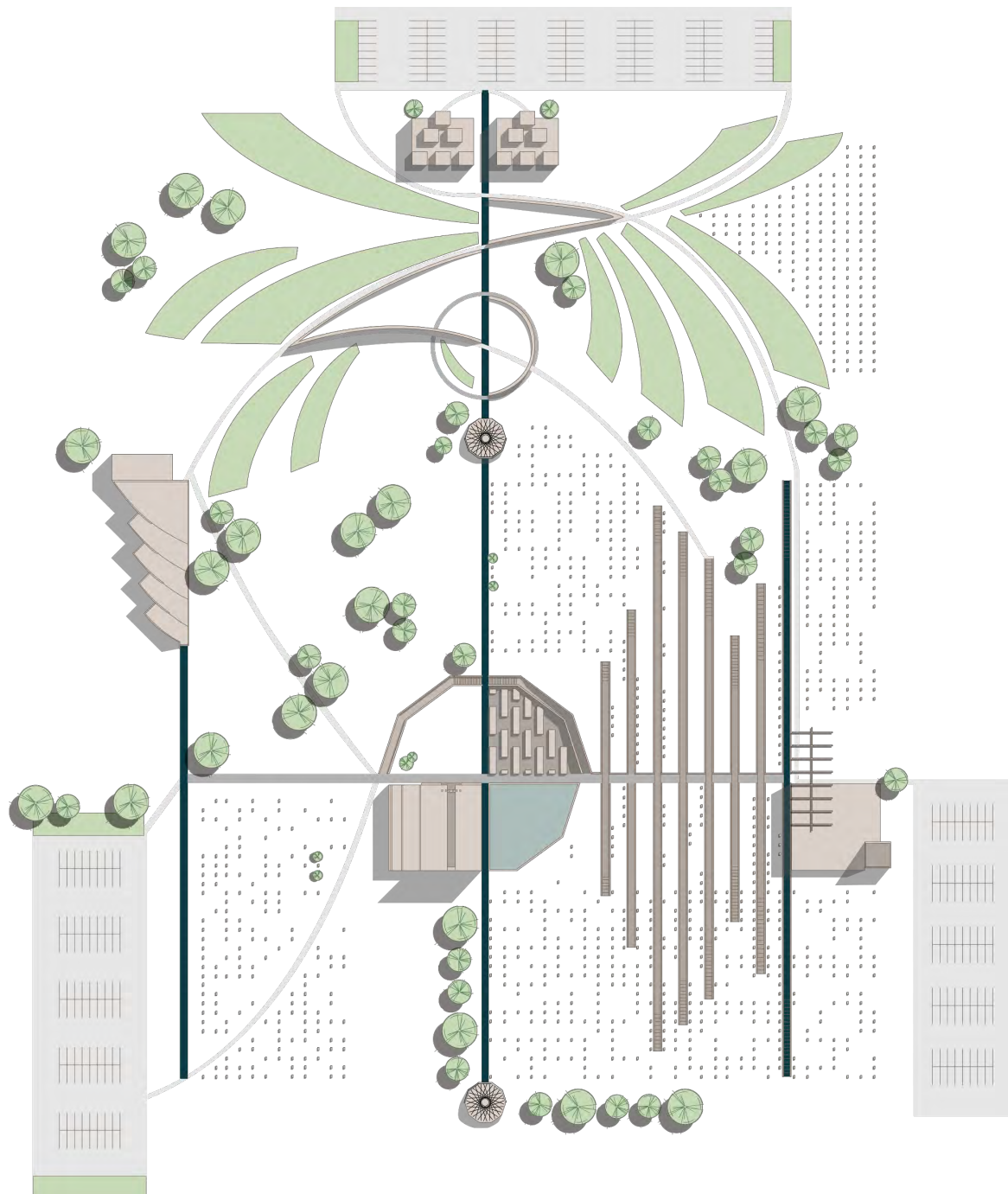
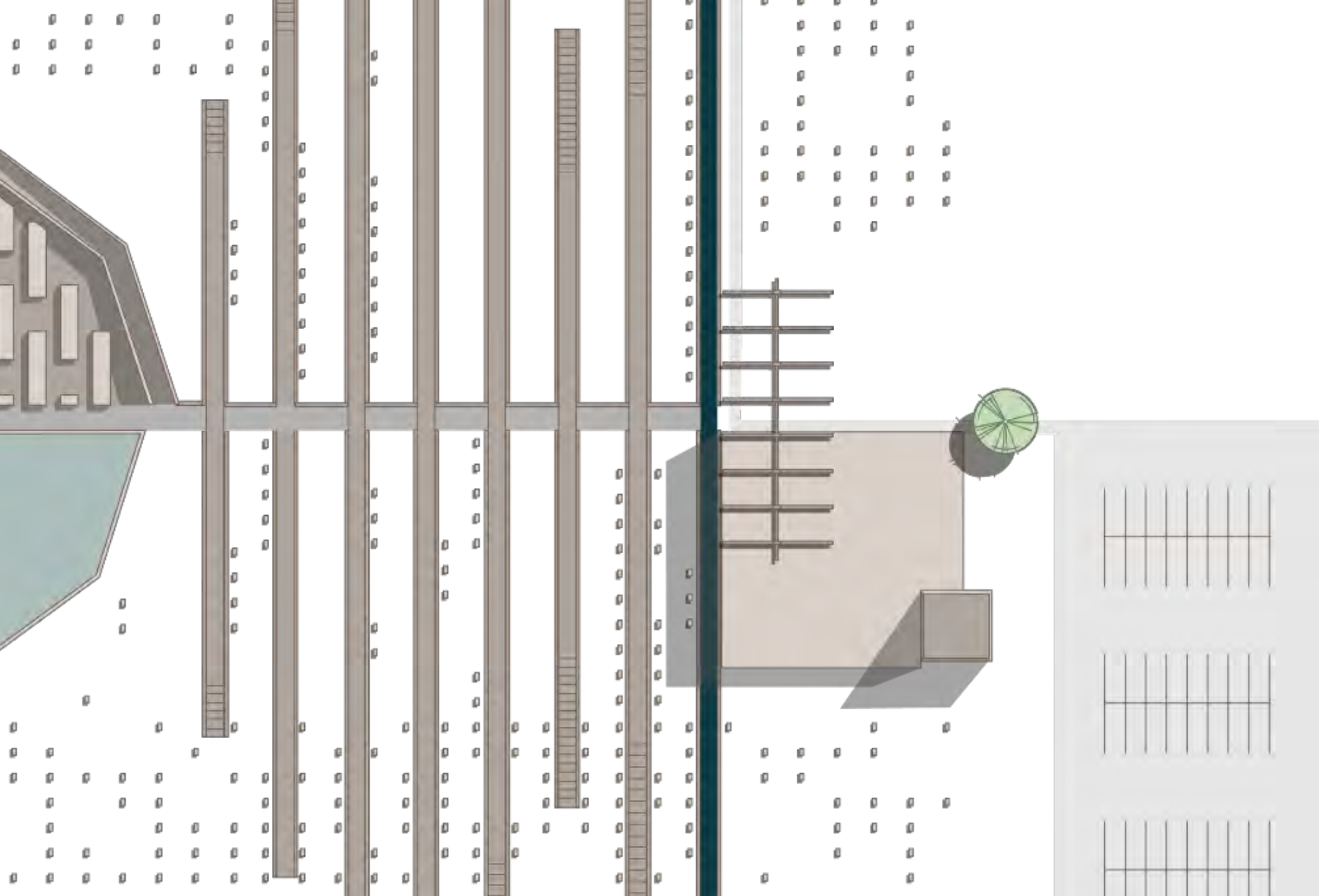


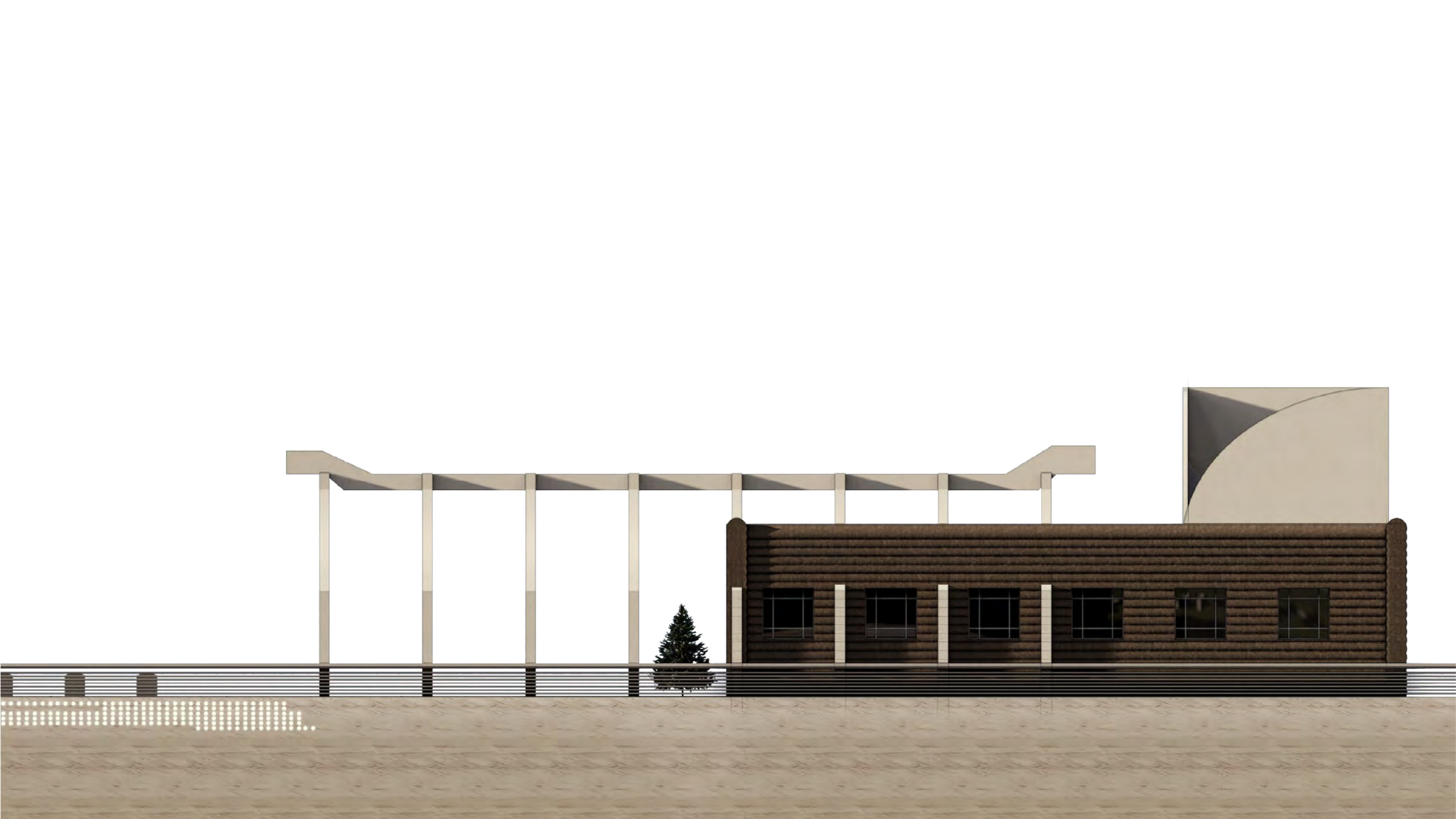


Figure 2.1



PROTHESIS





EKPHORA

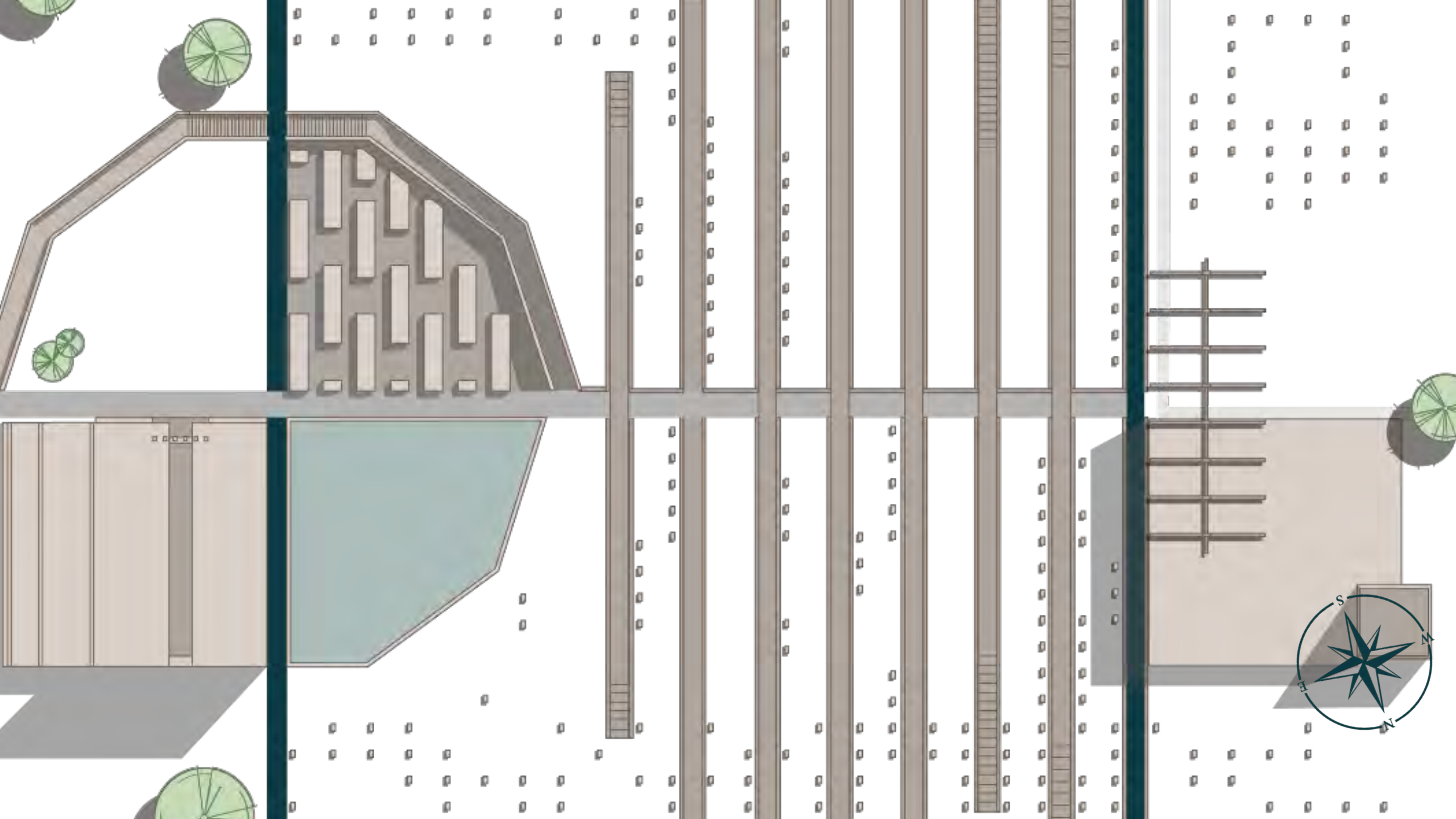
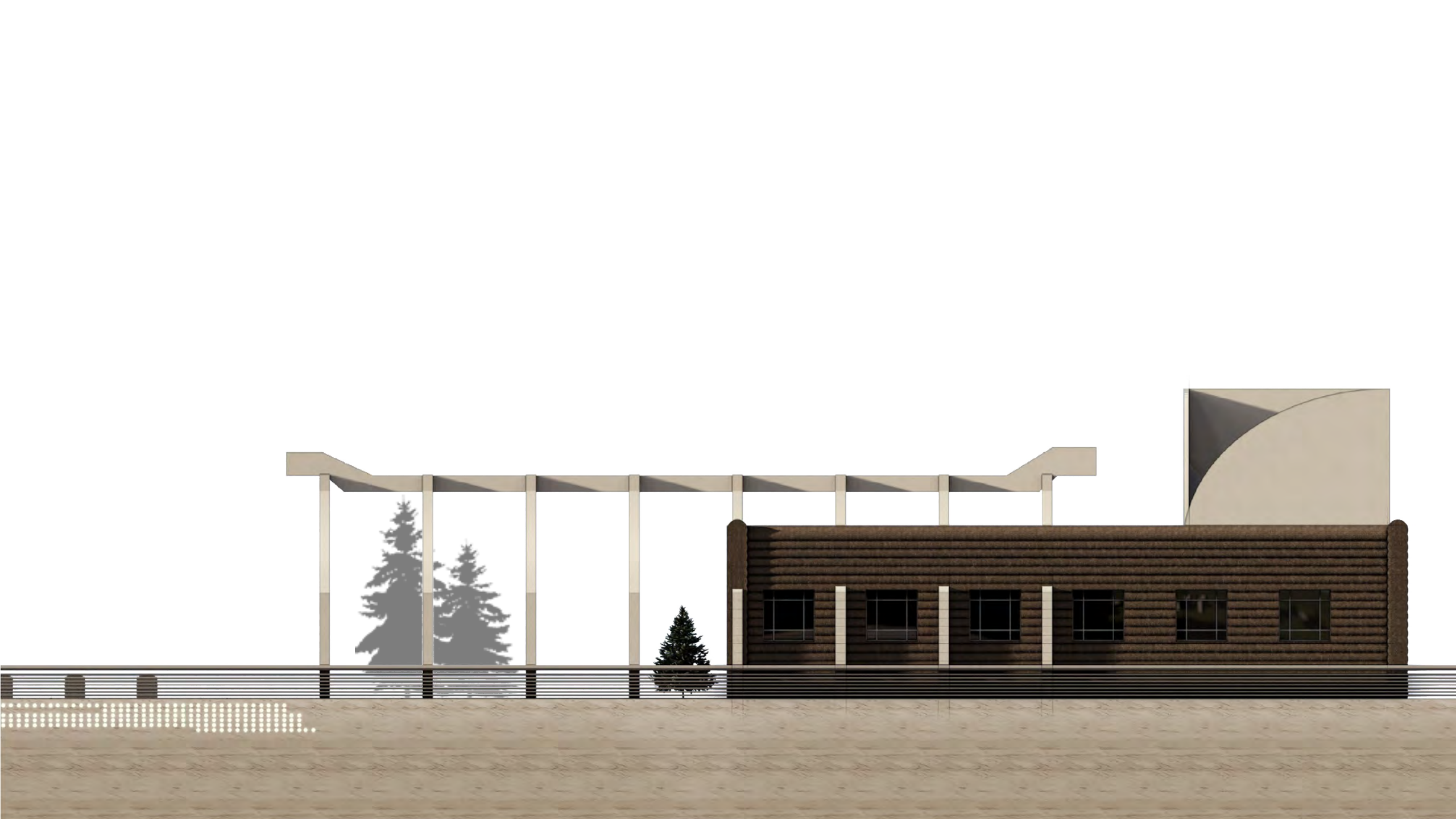
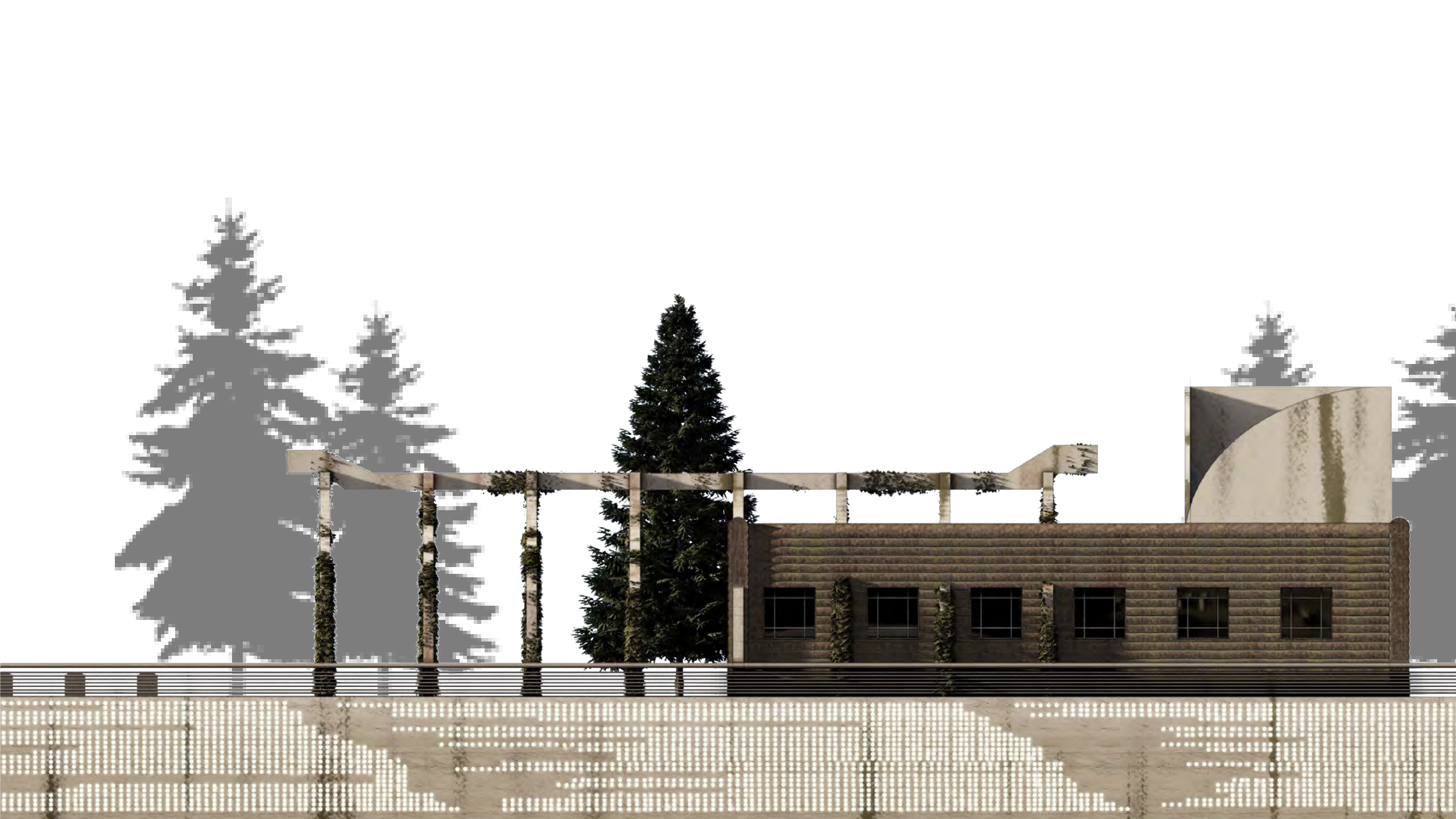


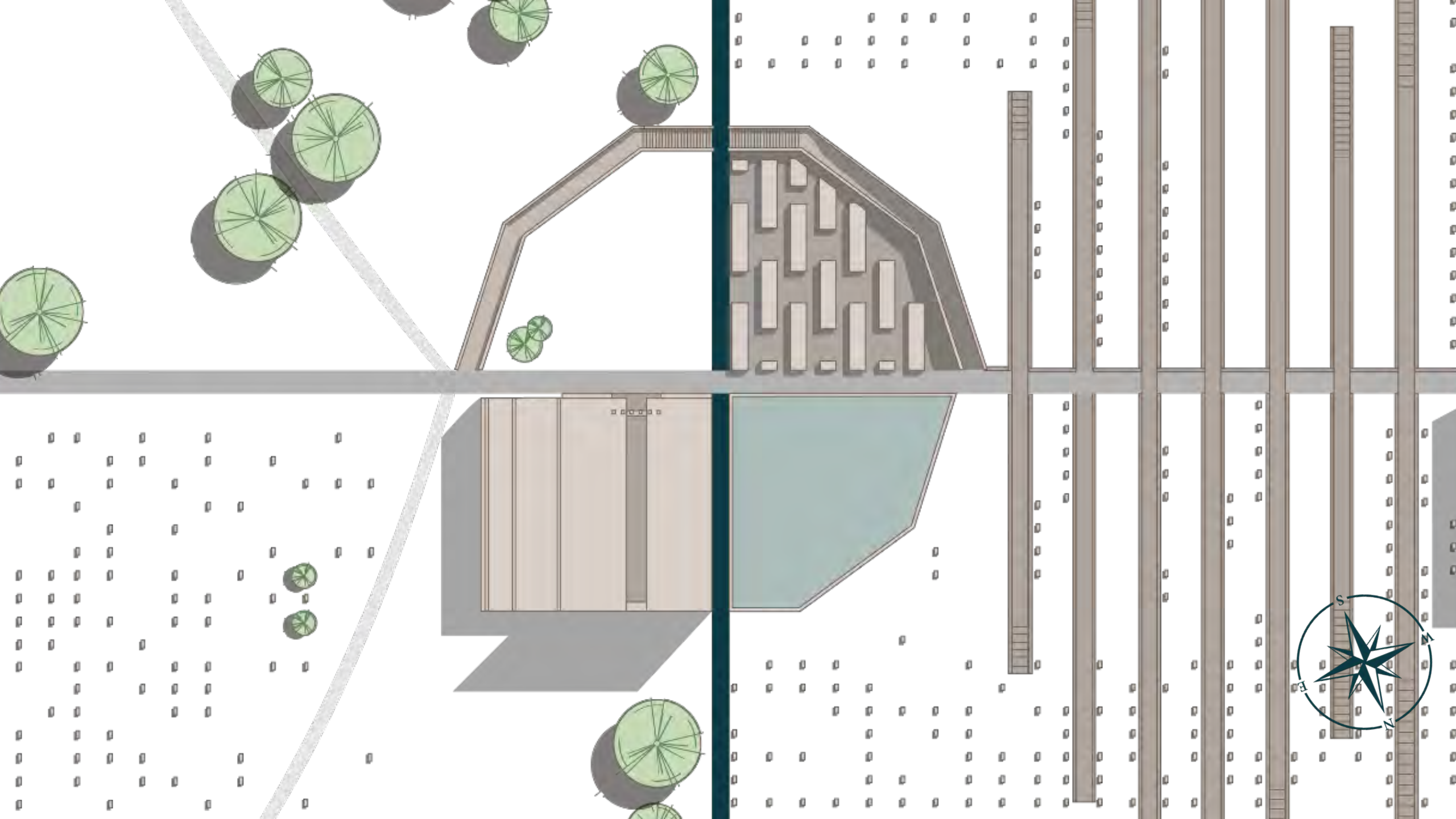
Figure 2.2

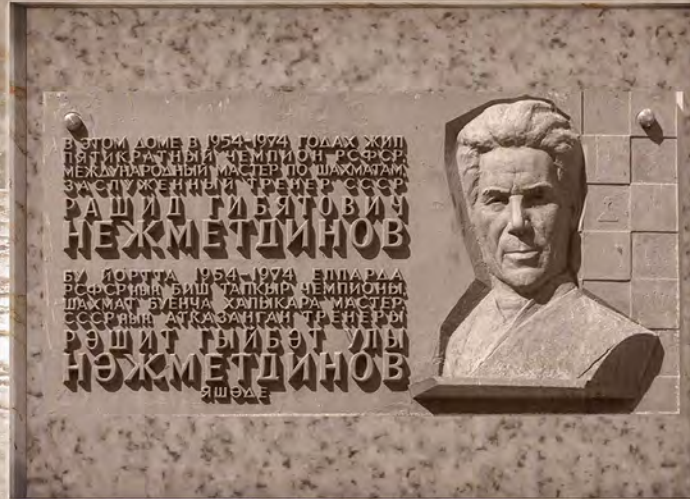












PERIDEIPNON



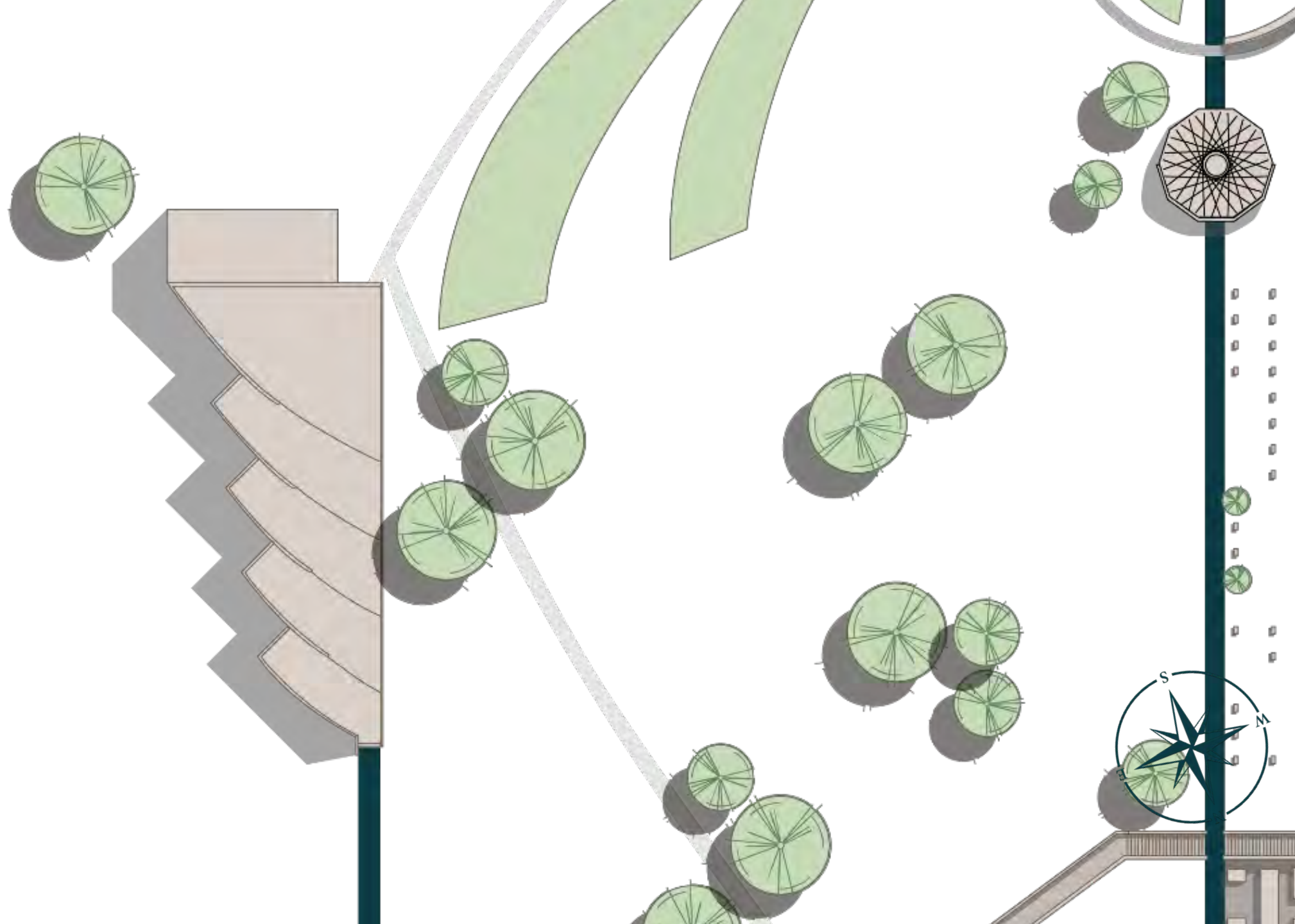
WIFE OF
JAKEN HANSCHEIDT
2008

WIFE OF
JAKEN HANSCHEIDT
2008

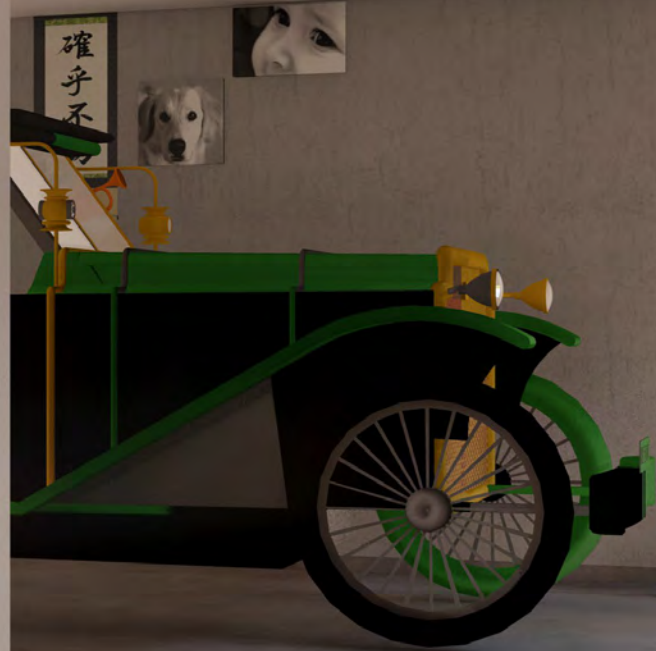
WIFE OF
JAKEN HANSCHEIDT
2008



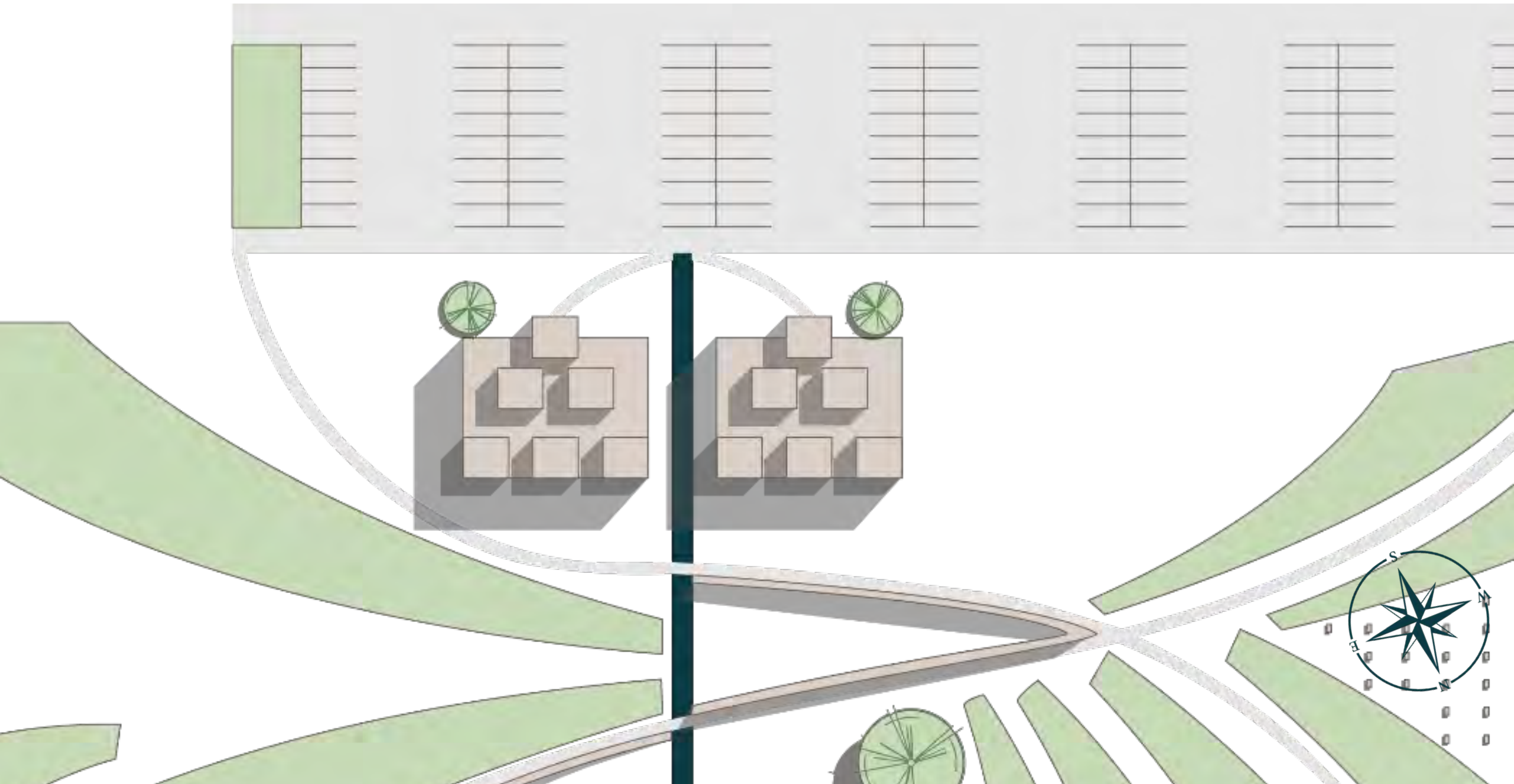
ACTS OF REMEMBRANCE













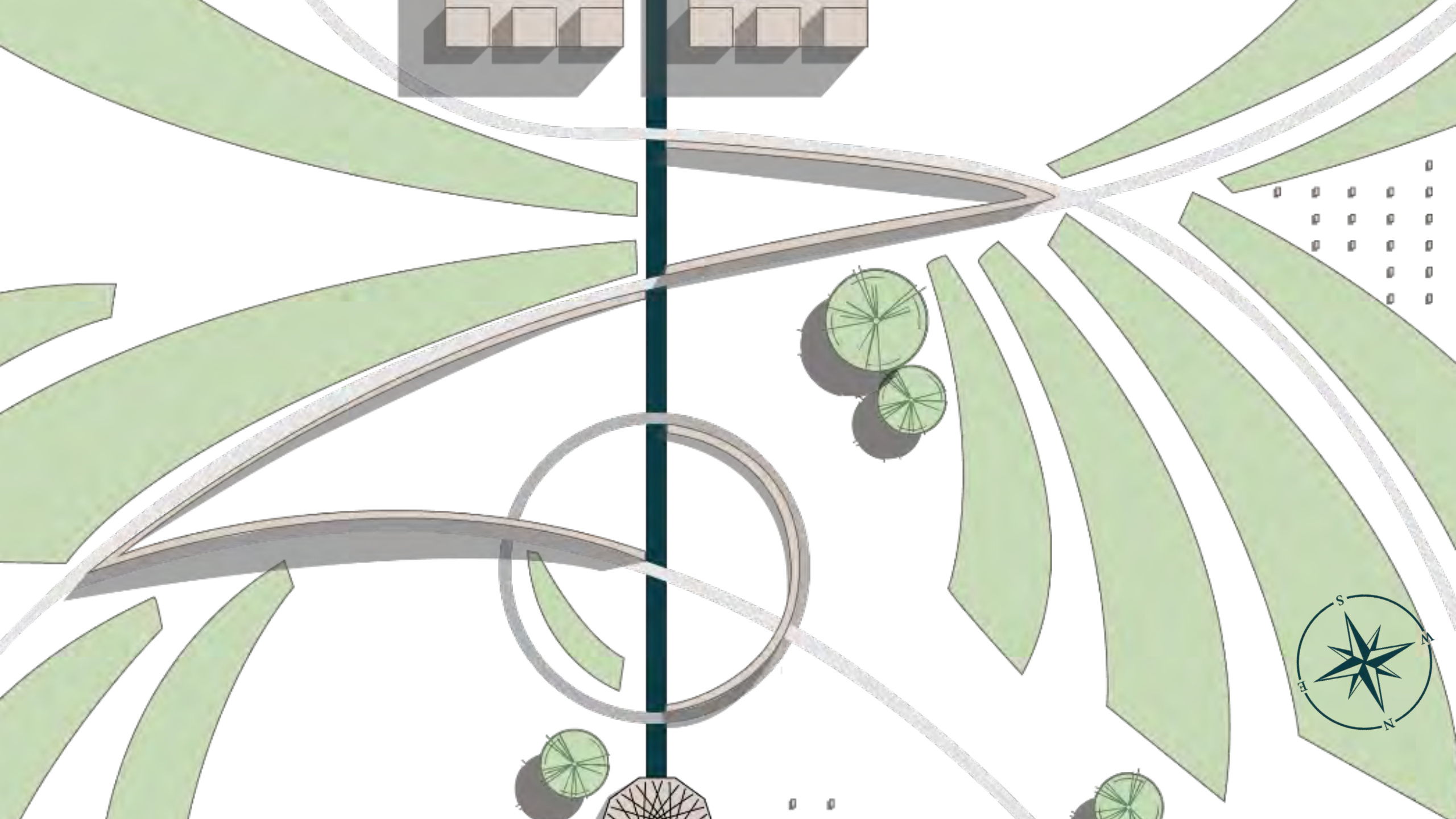






Figure 2.3

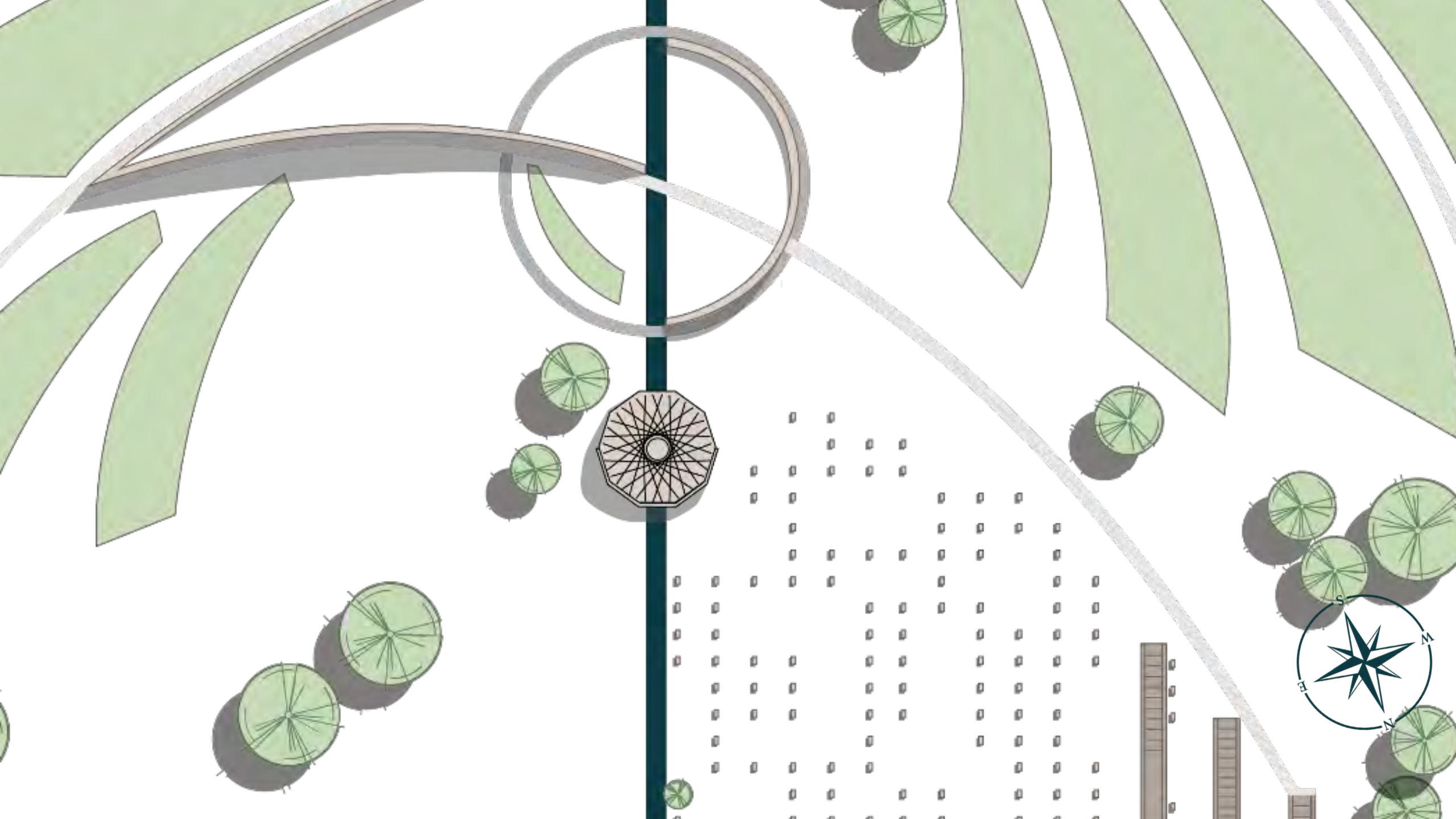






Figure 2.1

DYING WELL
IS TO HAVE
LIVED WELL

THANK YOU

Figures

- 1.1- Kubler-Ross, E. (1969). *On Death and Dying*. Macmillan Publishing Co., Inc.
- 1.2- Gadamer, H.-G. (n.d.). *The Enigma of Health*.
- 1.3- Installation view of the Underworld *Krater* from Altamura, South Italian, made in Apulia, 360–340 BC; terracotta. Attributed to the Circle of the Lycurgus Painter. National Archaeological Museum of Naples
- 1.4- Antique print, titled: ‘Mnemosine’, A statue of Mnemosyne, the Greek titaness, the personification of memory. Artists and Engravers: Anonymous.
- 1.5- Gordon, K. (n.d). *Mnemosyne*. [digital].
- 1.6- Cicero (55 BCE). *Method of Loci*
- 1.7- Alfarano, Tiberio. (1571). *Iconographia*. [Graphite]
- 1.8- Baker, Joseph. (1892). *The witch no.1*. [Drawing] Library of Congress
- 2.1- Hugh C. Leighton Co. (n.d.). *Old Fort Lee, Salem Willows*. [Postcard] <https://www.cardcow.com/957242/salem-massachusetts-old-fort-lee-willows/>
- 2.2- Greek, Attic (ca. 520-510 BCE). *Terracotta funerary plaque*. [Terracotta] <https://www.metmuseum.org/art/collection/search/254801>
- 2.3- Cousins, Frank (ca. 1865-1925) *Salem, Washington Square, views, Salem Common, west* [Photograph] <https://www.digitalcommonwealth.org/search/commonwealth:2b88rg32n>