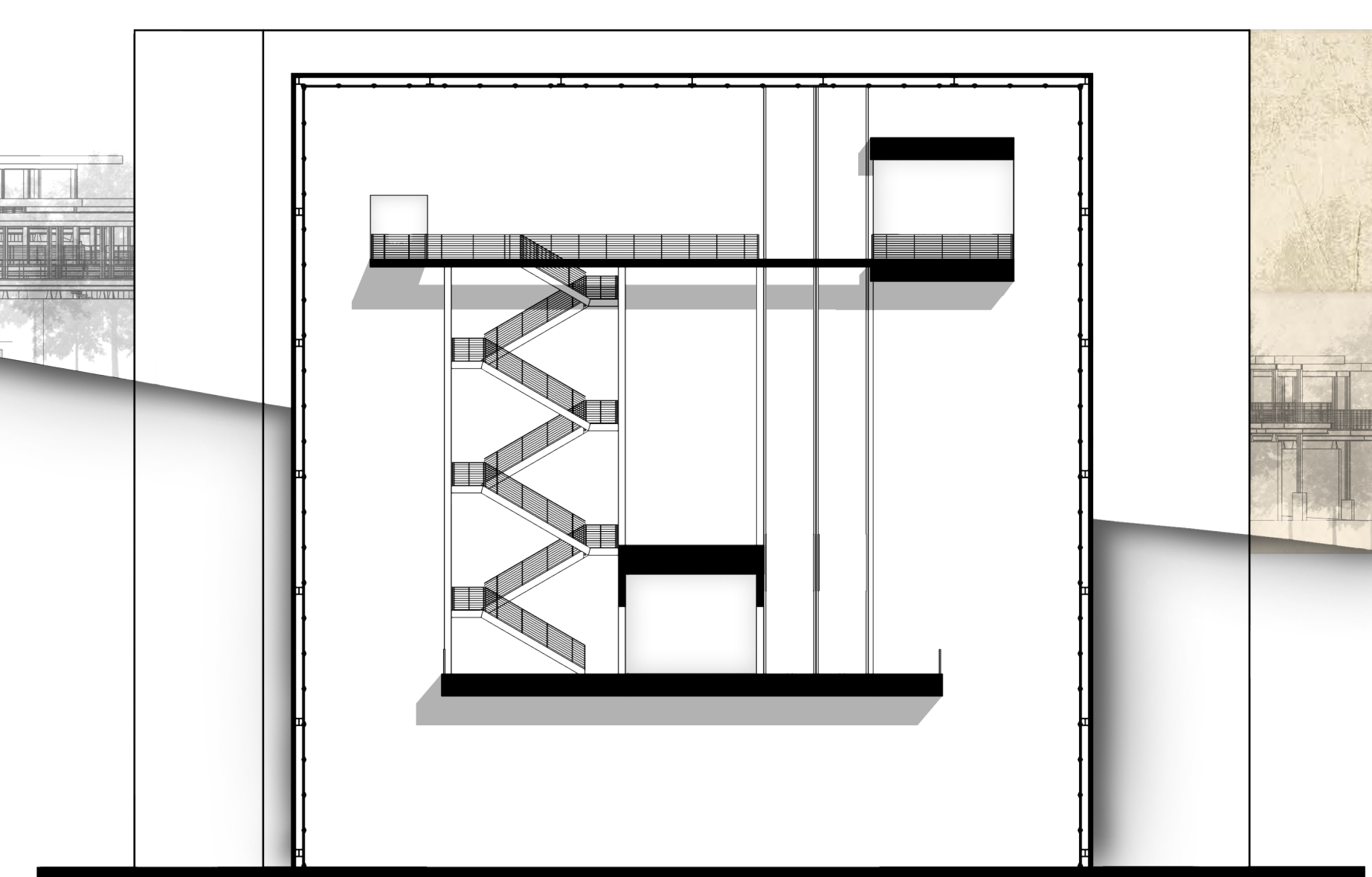


# STORIES OF SEPARATION

REUNIFYING THE EMOTIONAL BORDER OF THE KOREAN 38TH PARALLEL



**ARTEFACT**  
An artefact was created to provoke dialogue on how storytelling becomes the catalyst to reach across emotional divisions through its understanding of the other. Its physical construction consists of two silhouettes made from stenciled concrete and placed on a canvas of hanji paper washed with water and strings of red paint. Further lines are suspended in the space surrounding it pointing in various directions. Unifying narratives are displayed as the figures align with each other and isolated narratives are exhibited as the figures align with lines existing beyond their canvases. Both the construction techniques and the representations of the artefact manifest in the architecture of this project.

**PROJECT BRIEF**  
When encountering conditions that exist outside our sensory perceptions, it is impulse to occupy it with experiences and memories to alleviate feelings of the unknown. Historically, humanity applied the medium of storytelling to understand the unknown conditions of the world. Through documenting stories of the past, an imagination of the future is presented to us.

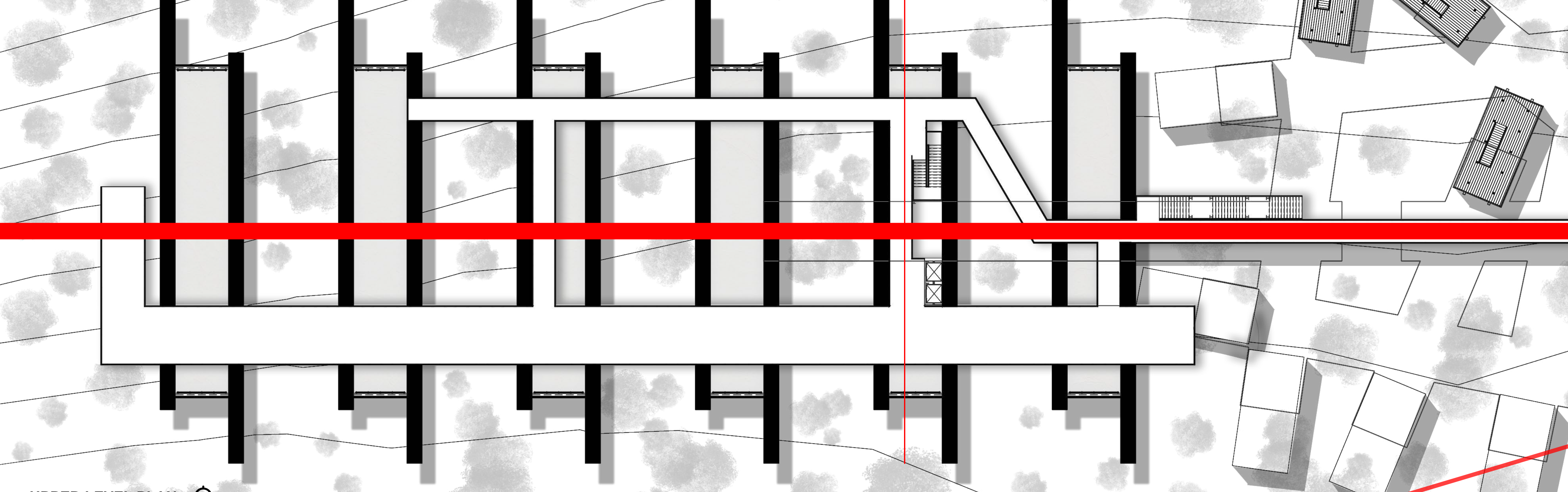
Following World War II, the 38th parallel marked the line dividing Korea before its development into the demilitarized zone. Contrasting the stagnant characteristics of this physical division, the emotional division in Korea continuously evolves. Addressing this border now is critical as generational memories fade.

Designed along the invisible line of the 38th parallel, the architecture archives and reveals Korean history to its visitors. The architectural experience rooted in stories provokes an understanding of the other side of an emotional border through imparting a lasting influence on perceptions and memories.

A RENEWED EMOTIONAL CONNECTION IS MADE ACROSS A PHYSICAL BORDER THROUGH SHARED STORIES OF THE PAST

CONNECTION

**MOUNTAIN SITE**  
The proposed architecture is oriented on a mountain north of Seoul in South Korea that intersects the 38th parallel. The project engages Korea's mountainous geography by distributing architectural experiences above and below grade connecting to both the physical and emotional connections existing between the North and the South. Mountainous topography on a human scale creates scenarios of discovery and shifting perspectives as one ascends and descends among the pavilions. Further development of the project would entail a second proposal of identical design and programming on a mountain in North Korea also intersecting the 38th parallel. However, because of their intense similarities in design and programming, the South Korean site was chosen as a focus for the purpose of proposing the thesis.

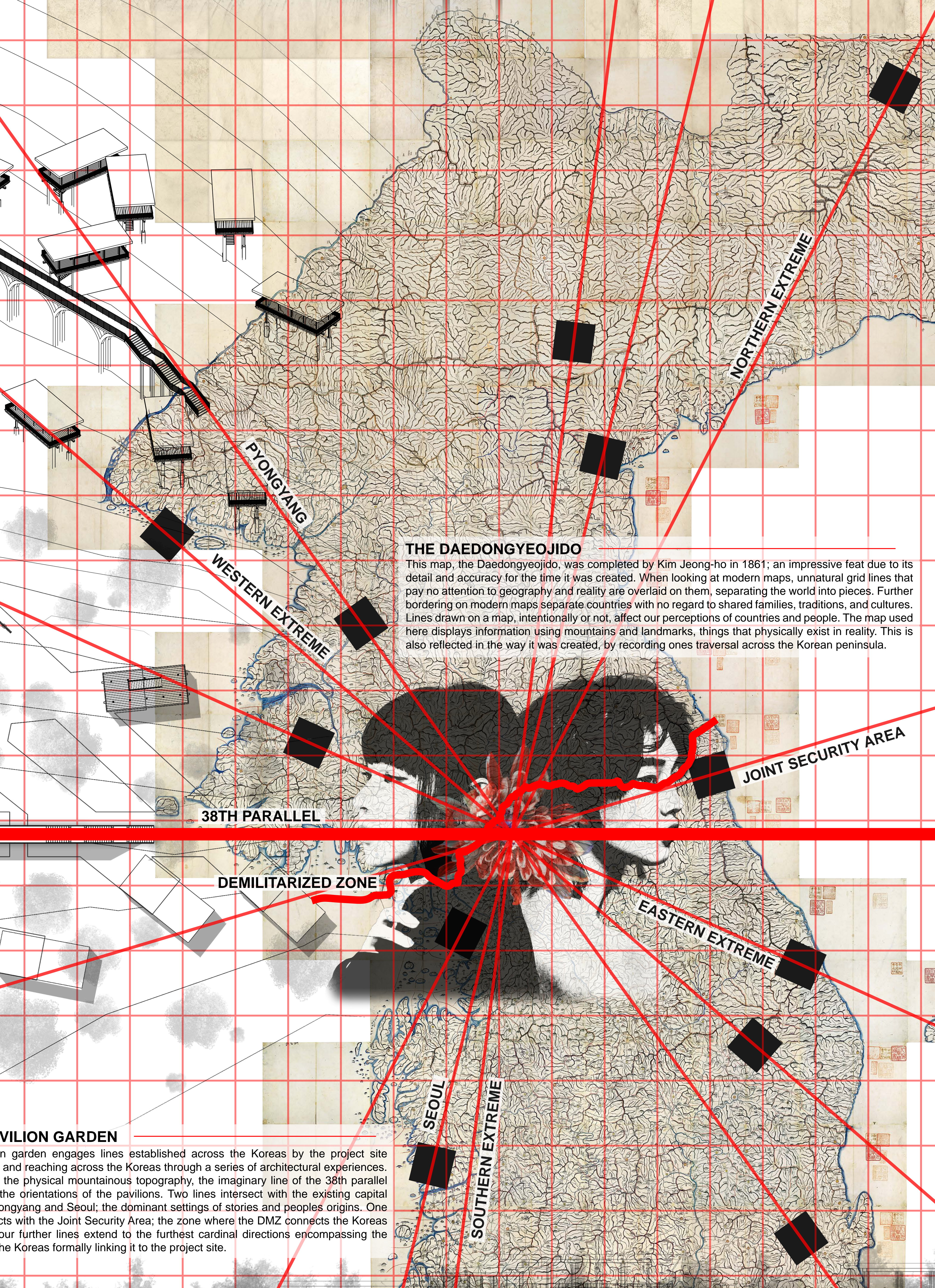


UPPER LEVEL PLAN

**VOIDS AND FRAMES**  
Voids cleaved into the mountain and framed with concrete construction reveal pieces of the buildings programming in ones procession towards the archive exhibitions and pavilion garden. The subtle uniqueness of each void engages with the sense of curiosity in constant reveals from empty space to the architectural connections of the project. Board-formed concrete suppresses views and force perspectives as you pass through them and hanji paper screens fit between the concrete to create an intimate canvas of stories in each frame.



LATITUDINAL SECTION



**THE DAEDONGYEOJIDO**  
This map, the Daedongyeojido, was completed by Kim Jeong-ho in 1861; an impressive feat due to its detail and accuracy for the time it was created. When looking at modern maps, unnatural grid lines that pay no attention to geography and reality are overlaid on them, separating the world into pieces. Further bordering on modern maps separate countries with no regard to shared families, traditions, and cultures. Lines drawn on a map, intentionally or not, affect our perceptions of countries and people. The map used here displays information using mountains and landmarks, things that physically exist in reality. This is also reflected in the way it was created, by recording ones traversal across the Korean peninsula.

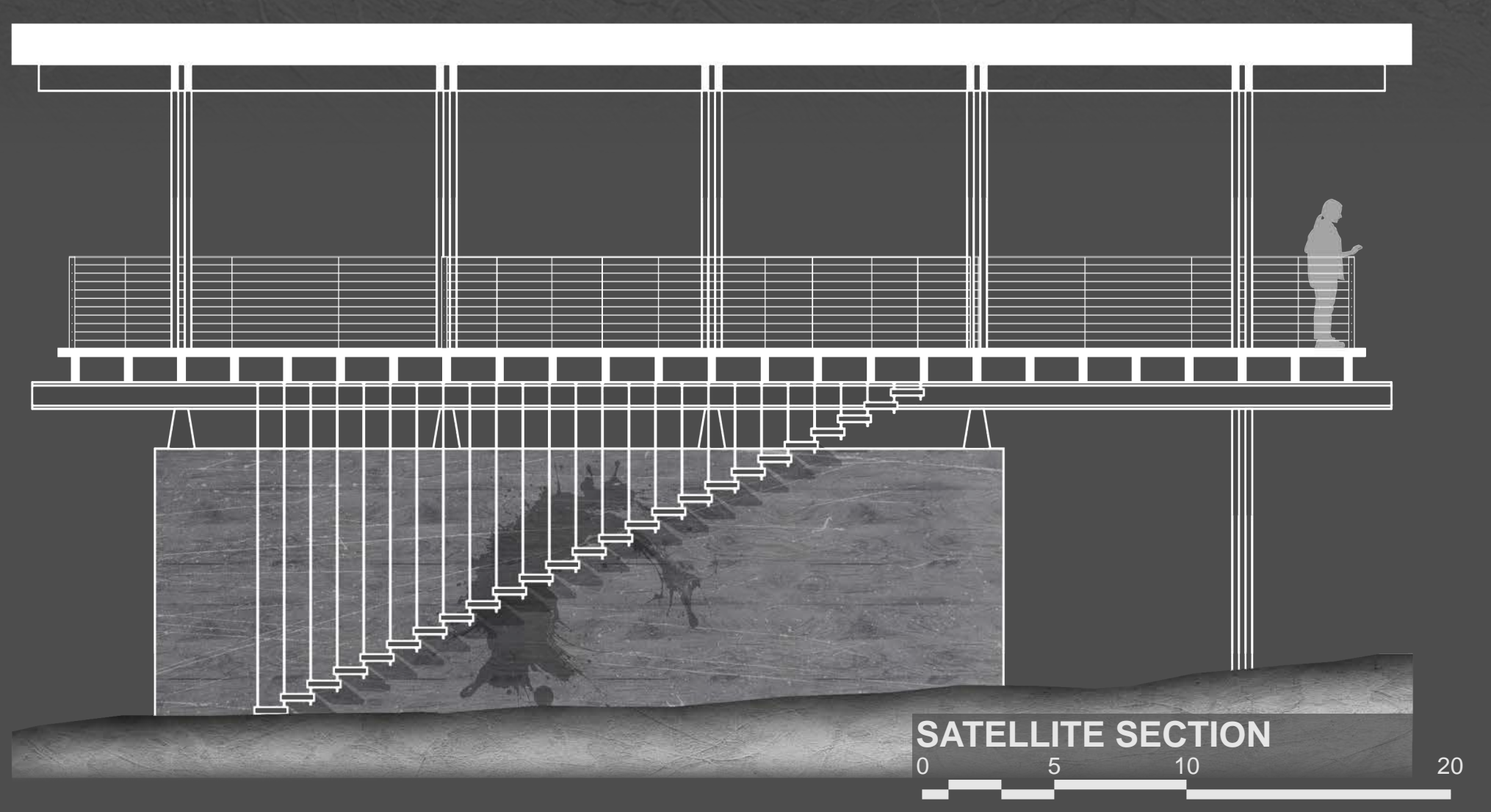
**SITE PAVILION GARDEN**  
The pavilion garden engages lines established across the Korea by the project site intertwining and reaching across the Korea through a series of architectural experiences. Paired with the physical mountainous topography, the imaginary line of the 38th parallel dominates the orientations of the pavilions. Two lines intersect with the existing capital cities of Pyongyang and Seoul, the dominant settings of stories and peoples origins. One line intersects with the Joint Security Area; the zone where the DMZ connects the Korea together. Four further lines extend to the furthest cardinal directions encompassing the entirety of the Korea formally linking it to the project site.

**UNDERGROUND EXHIBITION HALL**

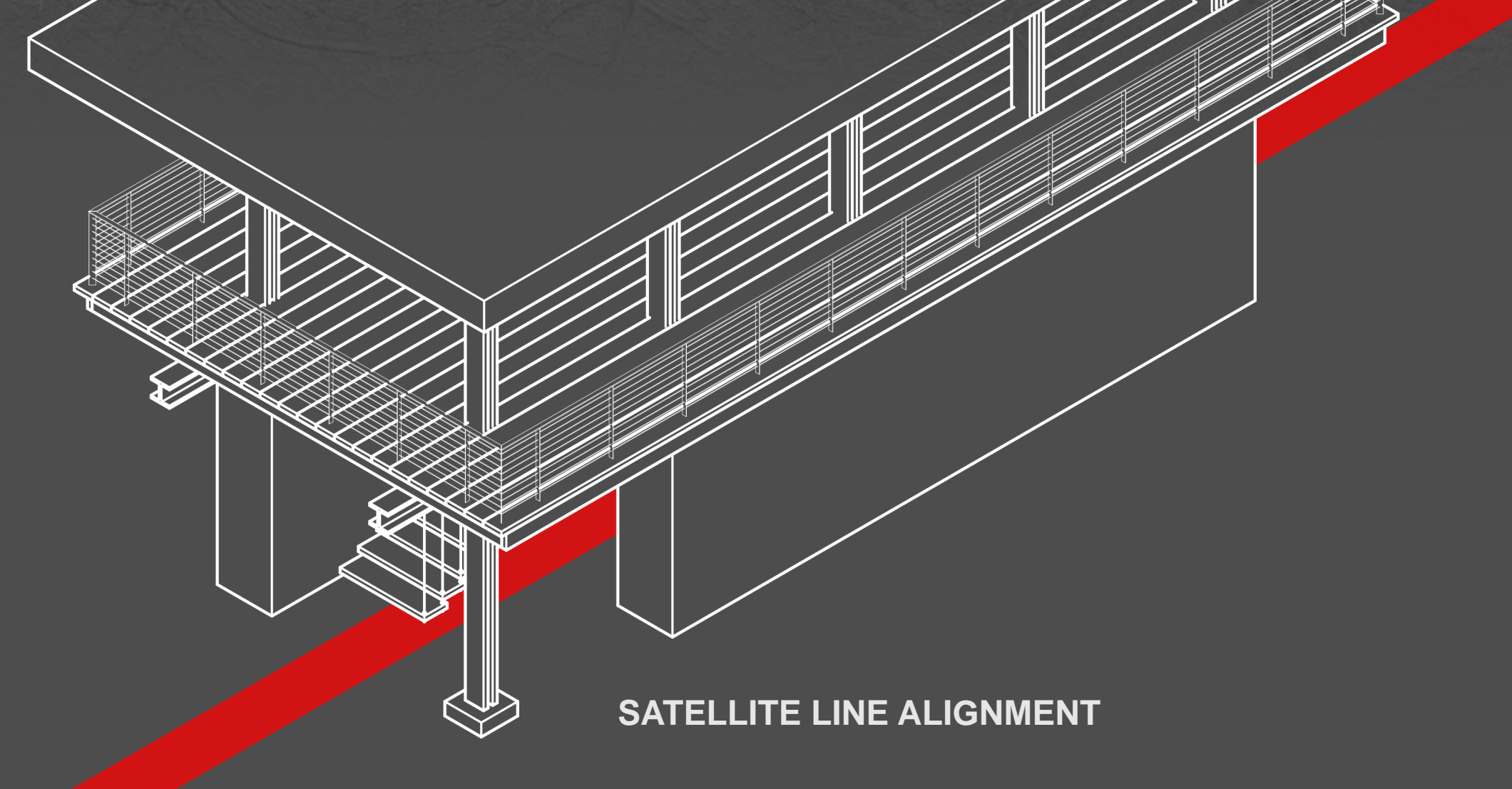
The architectural experience of the 38th parallel becomes tangible in the exhibition hall underneath the pavilion garden. Across the frames and pavilion garden the 38th parallel is established but it is in the exhibition of the stories that it truly manifests and is brought into existence. This is achieved by clearly marking its path with an expressive installation of suspended hanji paper strips that simulate breathing and life through movement. People walking along the hallway are drawn to the suspended paper by projections of the other and of the self rippling across the moving paper. This movement allows people to see through to the other side of the 38th parallel in the exhibition space. The living installation reflects the still existing connections between the Korean people and will remain breathing as long as the hope of reunification exists.

**SATELLITE PAVILIONS**

Proposed in 14 different places of the Korea shown by red lines; their architecture aligns with and extends the lines that are manifested in the pavilion garden and archives of the project. Through this, the project site extends up to and through the satellite pavilions, encompassing the entirety of the Korea. The lines created by this architecture are only visualized and understood from looking at a map overlaid with the connections purposefully making arbitrary and meaningless borders. The revealing of this provokes conversation on the meaning of drawn borders, and extends to the origin of the lines in the 38th parallel.



SATELLITE SITE PLAN



SATELLITE LINE ALIGNMENT