

An anatomical drawing of a muscular arm, rendered in a detailed, etched style. The arm is shown from the shoulder down to the hand, with intricate musculature and tendons. The hand is holding a cluster of mushrooms with gills, which are also rendered in a detailed, etched style. The background is a textured, light-colored surface, possibly a rock face or a wall, with some faint, darker markings.

# CHRYSOPOEIA

A TRANSCENDENTAL METAMORPHOSIS  
OF CONSCIOUSNESS

By Parker Wold

Chrysopoeia: A Transcendental  
Metamorphosis of Consciousness  
*ARCH 772 Design Thesis*  
*PowerPoint*

*Figure 1. Edited version of "Flesh of the Gods" by Alex Grey.*

A black and white photograph of a wall with peeling paint and a dark, shadowed area, possibly a hole or a shadow of a person. The text "MENTAL HEALTH" is overlaid in a large, black, serif font, enclosed in quotation marks.

“MENTAL HEALTH”



At the time of this presentation the world is facing a mental health crisis according to the World Health Organization (WHO)



HOW ARE WE UNDERSTANDING MENTAL  
HEALTH?

# “THE ENIGMA OF HEALTH” BY GADAMER

- Gadamer claims the practice of healing and medicine is no longer an art and focuses on treating the issue rather than the person
- The person can often go overlooked in an attempt to isolate the issue rather than seeing the issue and person as part of a whole
- This objective view to healthcare can lead to mistreatment and issues of medical misdiagnosis

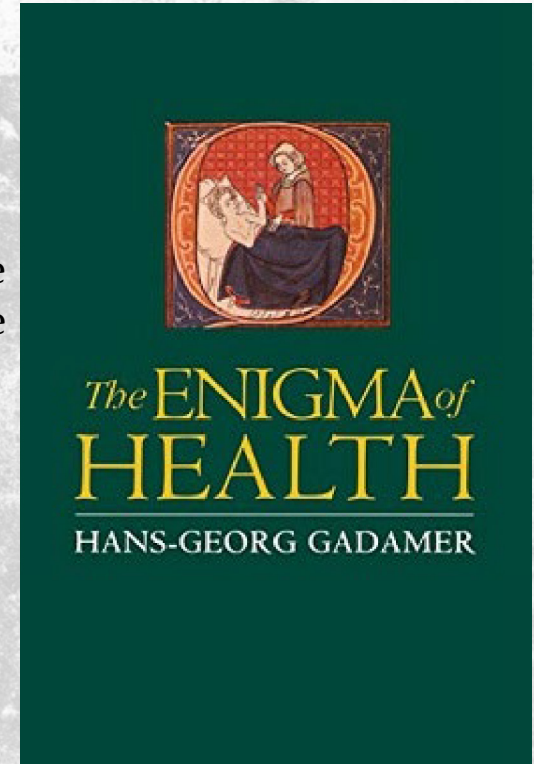


Figure 2. Cover of the book “The Enigma of Health”

# BRIEF HISTORY OF MENTAL ILLNESS



*Figure 3.* An illustration of the Bedlam Insane Asylum, from an 18th-Century engraving by William Hogarth



*Figure 5.* Patients sit inside Ohio's Cleveland State Mental Hospital in 1946.



*Figure 4.* Patients at Willowbrook State School, on Staten Island, in January 1972

# HEIDEGGER ON GELASSENHEIT

- Heidegger warns us that there is a “growing thoughtlessness” which needs to be addressed.
- Calculative thinking leads to a “flight from thinking”
- We need a paradigm shift in the way we think... to do this, we must turn to meditative thinking.
- Meditative thinking requires patience, practice, and a certain effort...
- “It belongs to the being, and listens to it” and it is concerned with the truth of being.



Figure 6. Headshot of Martin Heidegger



Figure 7. Iceberg illustration representative of the conscious and unconscious mind



# CARL JUNG AND THE UNCONSCIOUS MIND

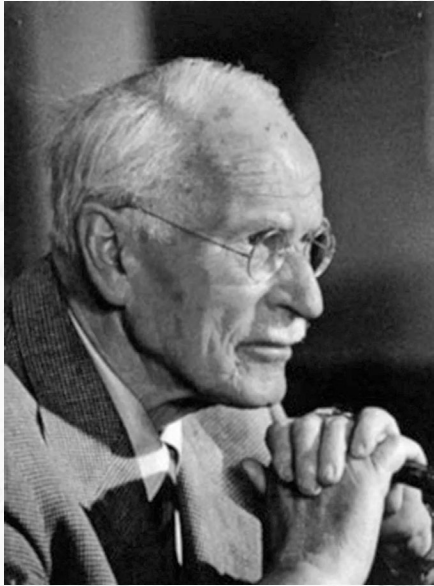
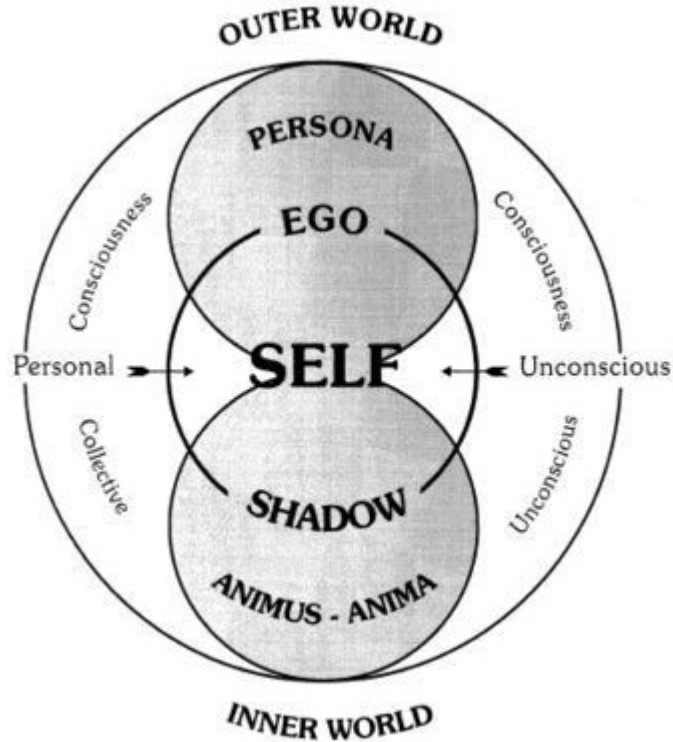


Figure 8. Headshot of Carl Jung

“Only by discovering alchemy have I clearly understood that the Unconscious is a process and that the ego’s rapport with the Unconscious and its contents initiate an evolution, more precisely, a real metamorphosis of the psyche.”

– Carl Jung

# THE COLLECTIVE UNCONCIOUS AND ARCHETYPES



## “Shadow Work”

“No tree, it is said, can grow to heaven unless its roots reach down to hell.”

– Carl Jung

Figure 9. Diagram of Carl Jung's primary archetypes

# A PSYCHEDELIC RENAISSANCE



Figure 10. Image of "Flesh of the Gods" by Alex Grey



Figure 11. Image of "Wonder" by Alex Grey





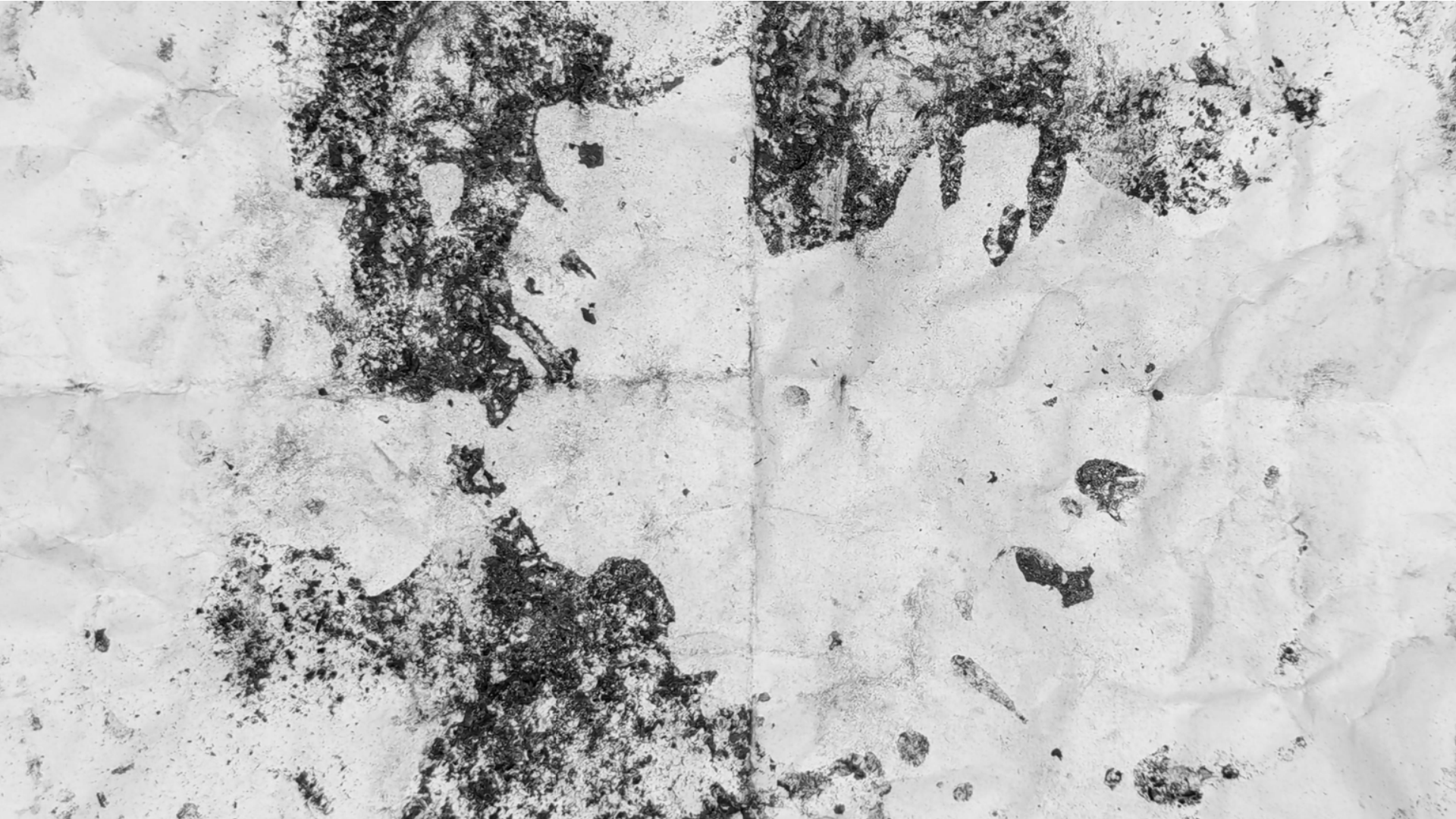


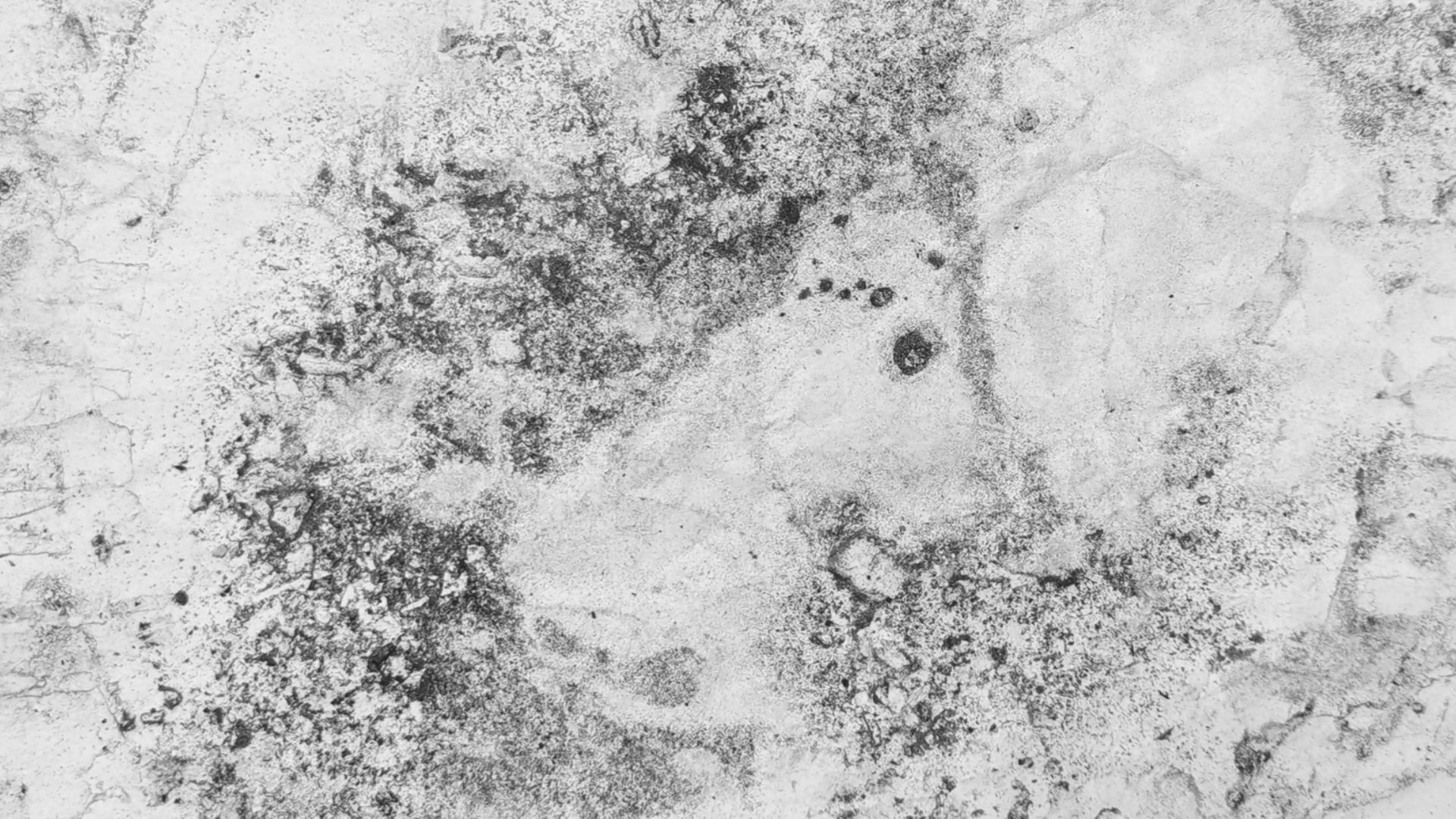




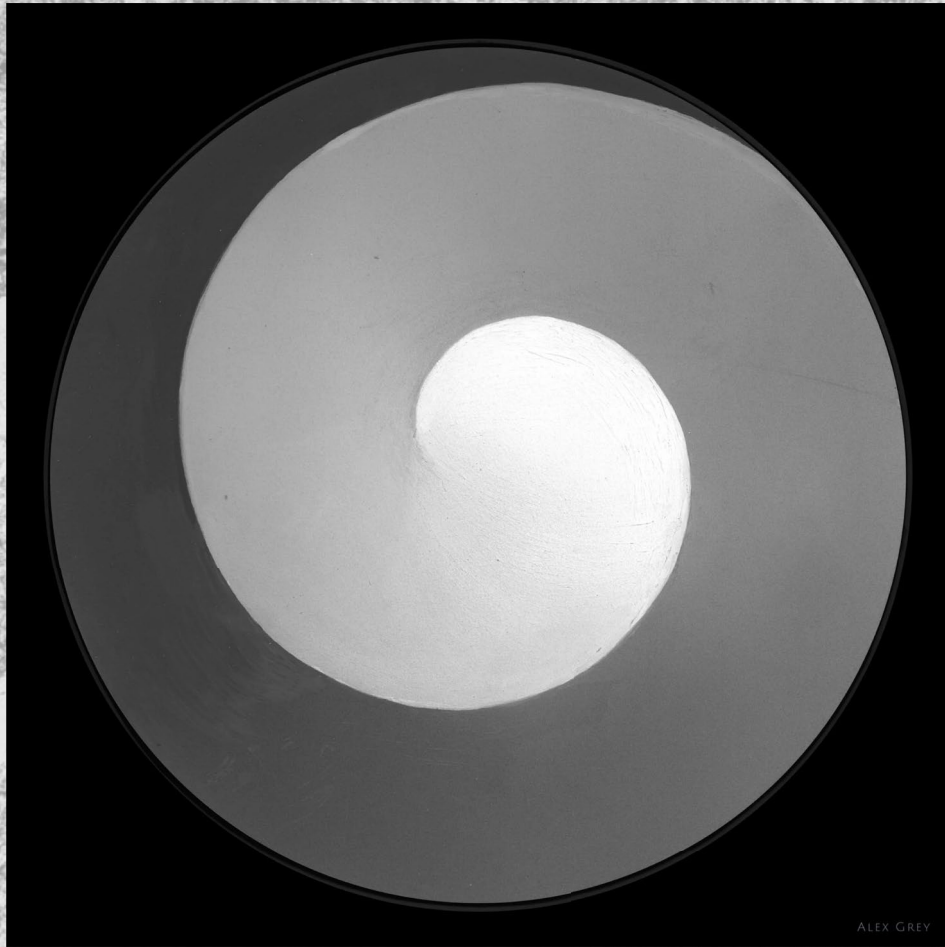












ALEX GREY

*Figure 12. Image of Alex Grey's "Polar Unity Spiral"*

# A PLACE FOR TRANSFORMATION

I am proposing a mental wellness rehabilitation center that focuses on holistic healing to foster a metamorphosis of consciousness. A place that allows for people to have a complete healing experience that will not limit them on their journey to attain better mental health. I believe that design and architecture holds a potential key for people to get the mental health care they deserve by creating a facility that provides the right amenities to act as tools for people to use to transform their psyche.

Architecture can “offer the gift of psychosomatic completeness, true health and well-being for the social body, a space of appearance consonant with its actions and habits.”

- Alberto Perez-Gomez

# OREGON

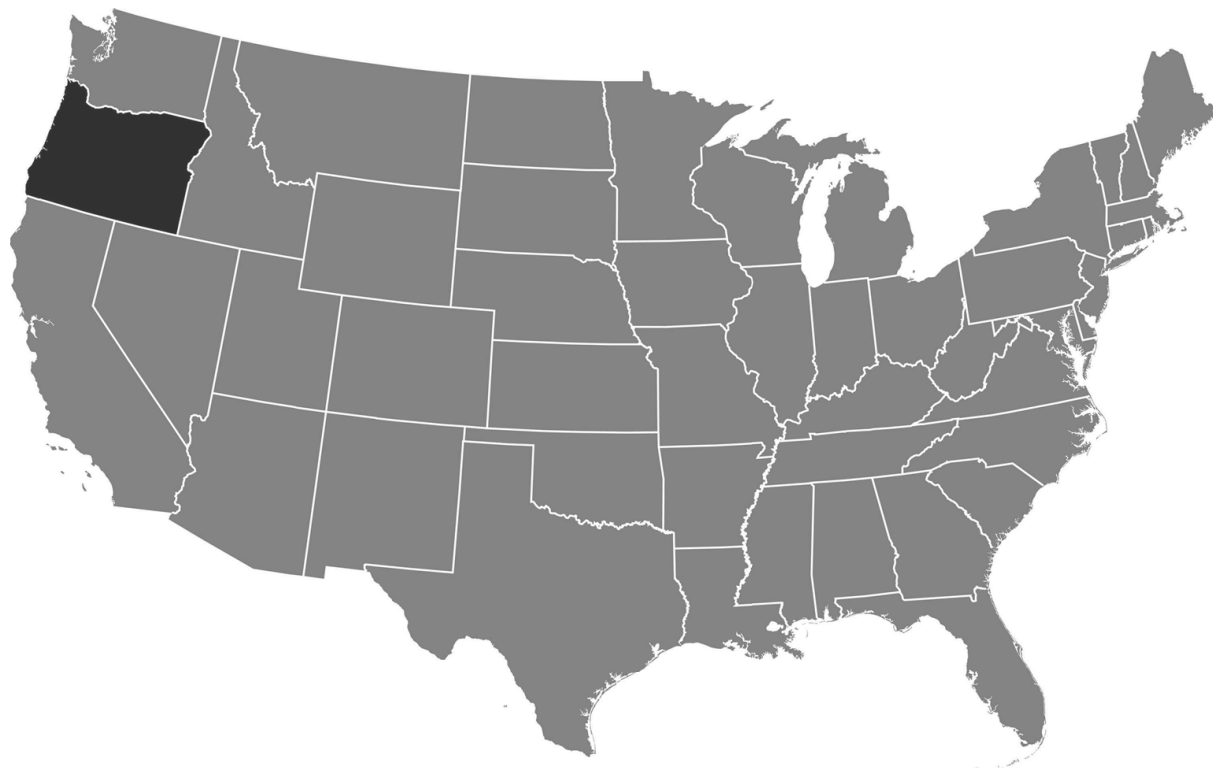


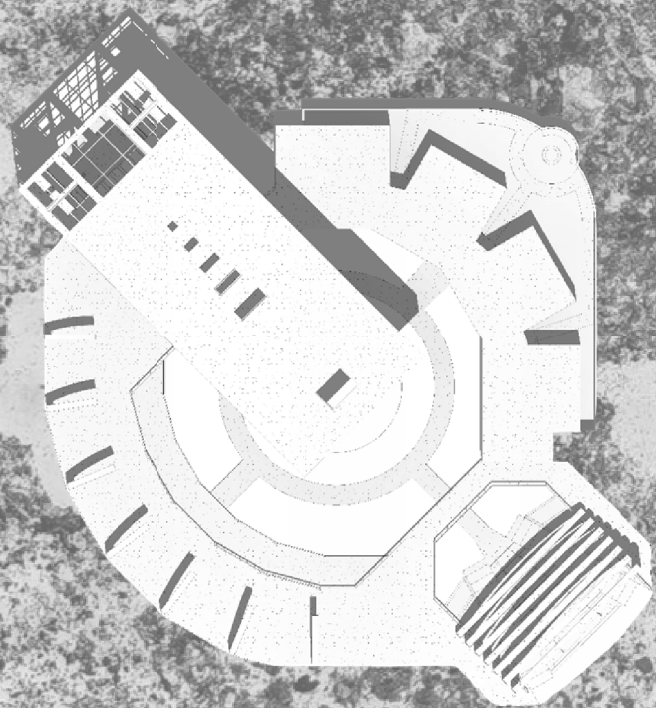
Figure 13. Map of the United States with Oregon highlighted

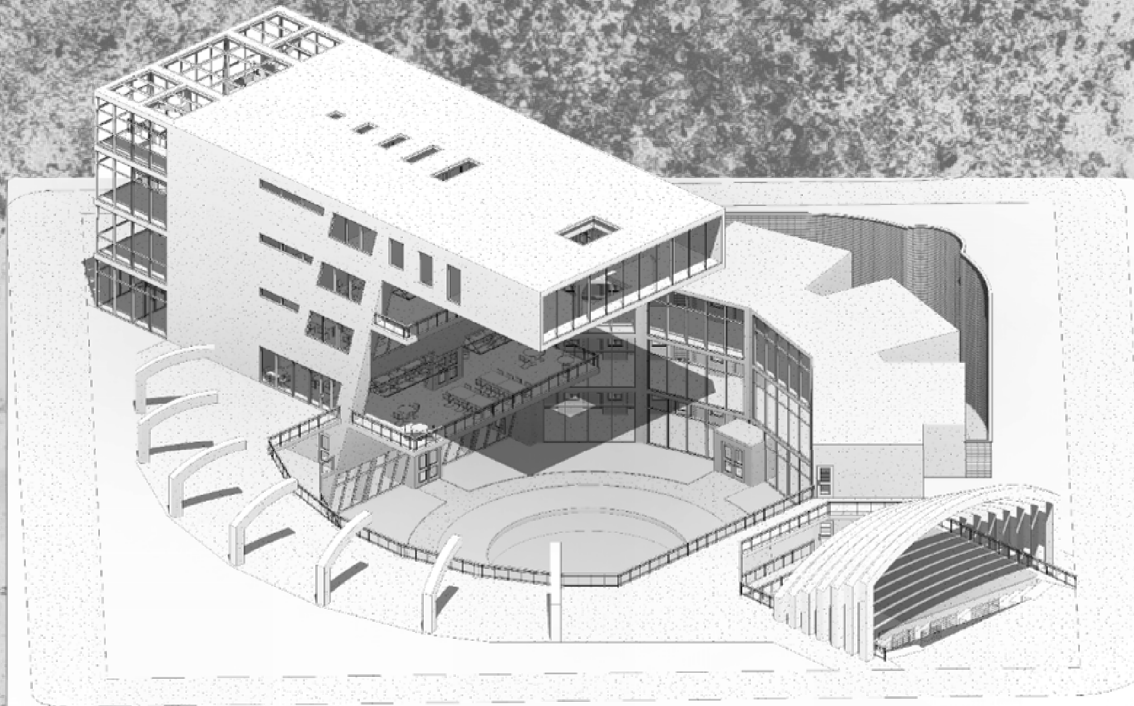
# SITE #1 – THE AETHER: 500 NW BROADWAY (OLDTOWN), PORTLAND, OR

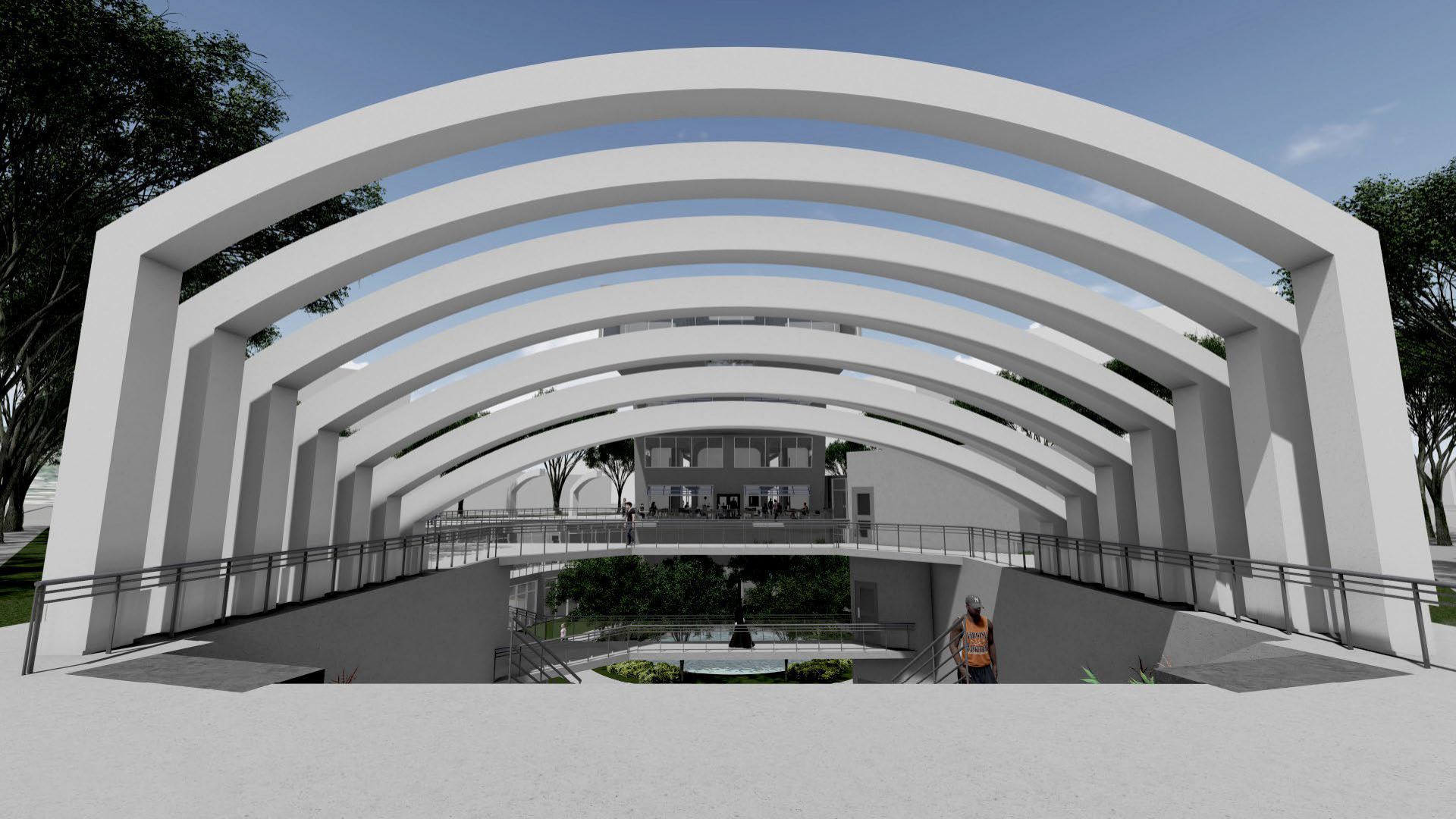


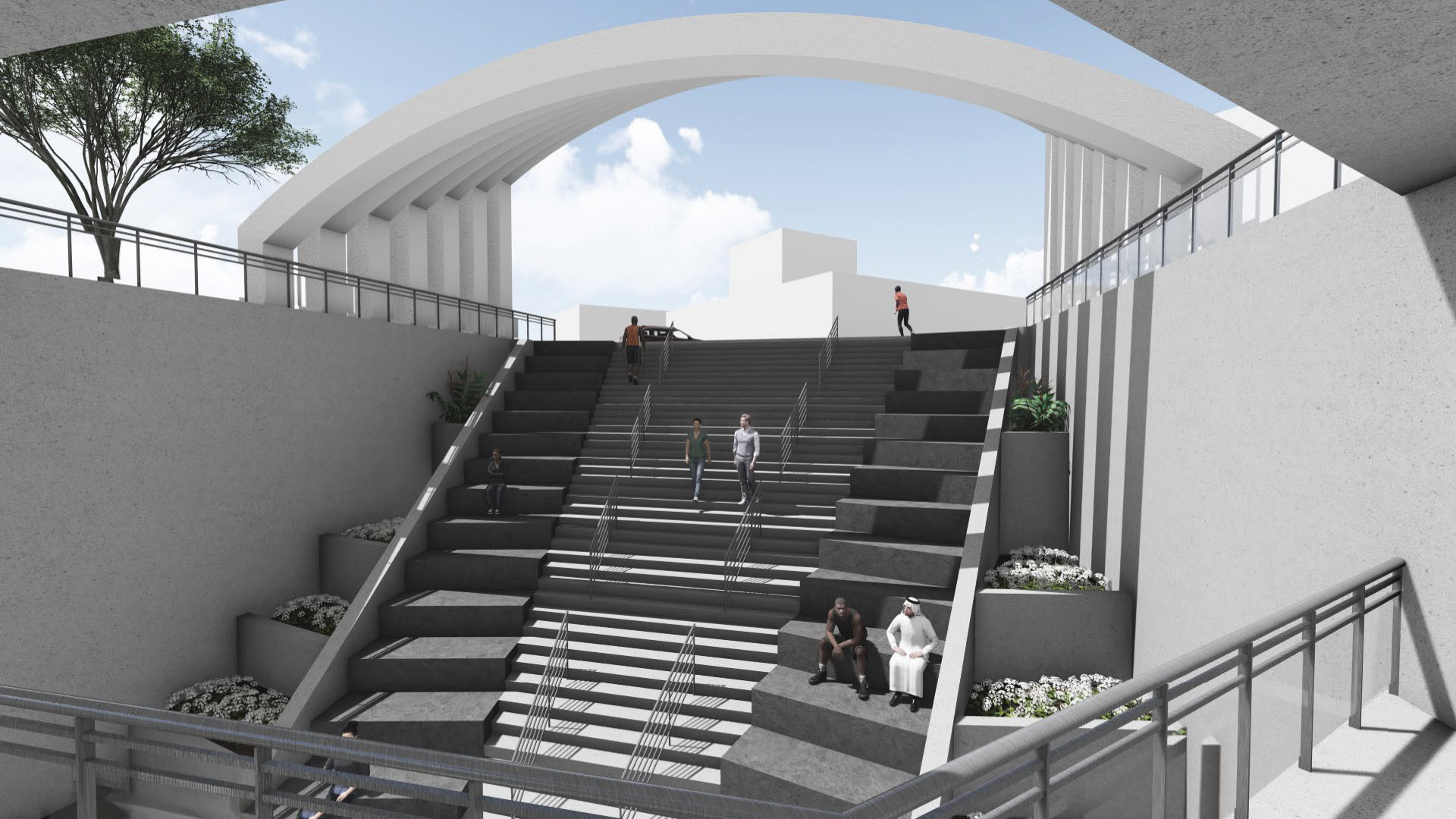




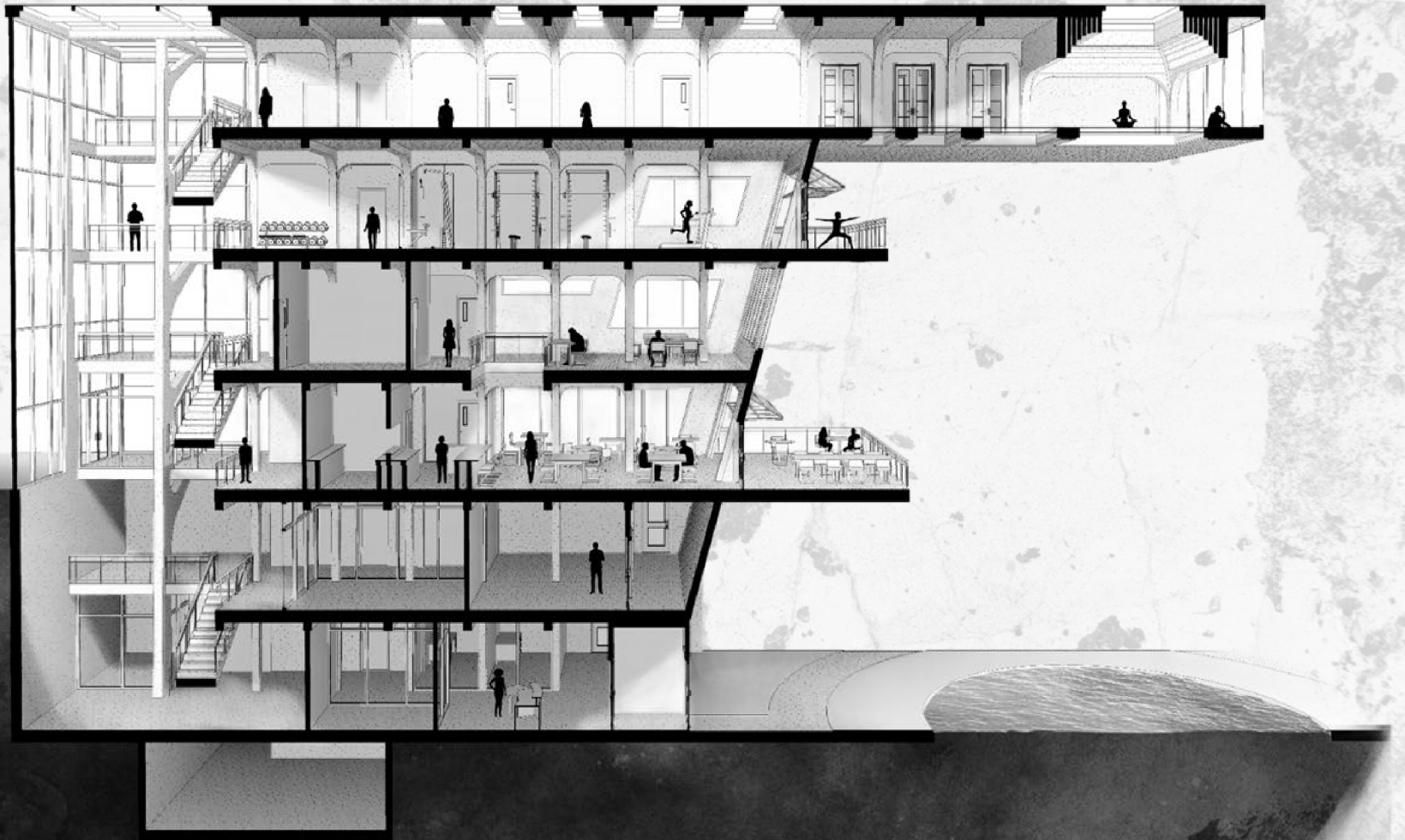


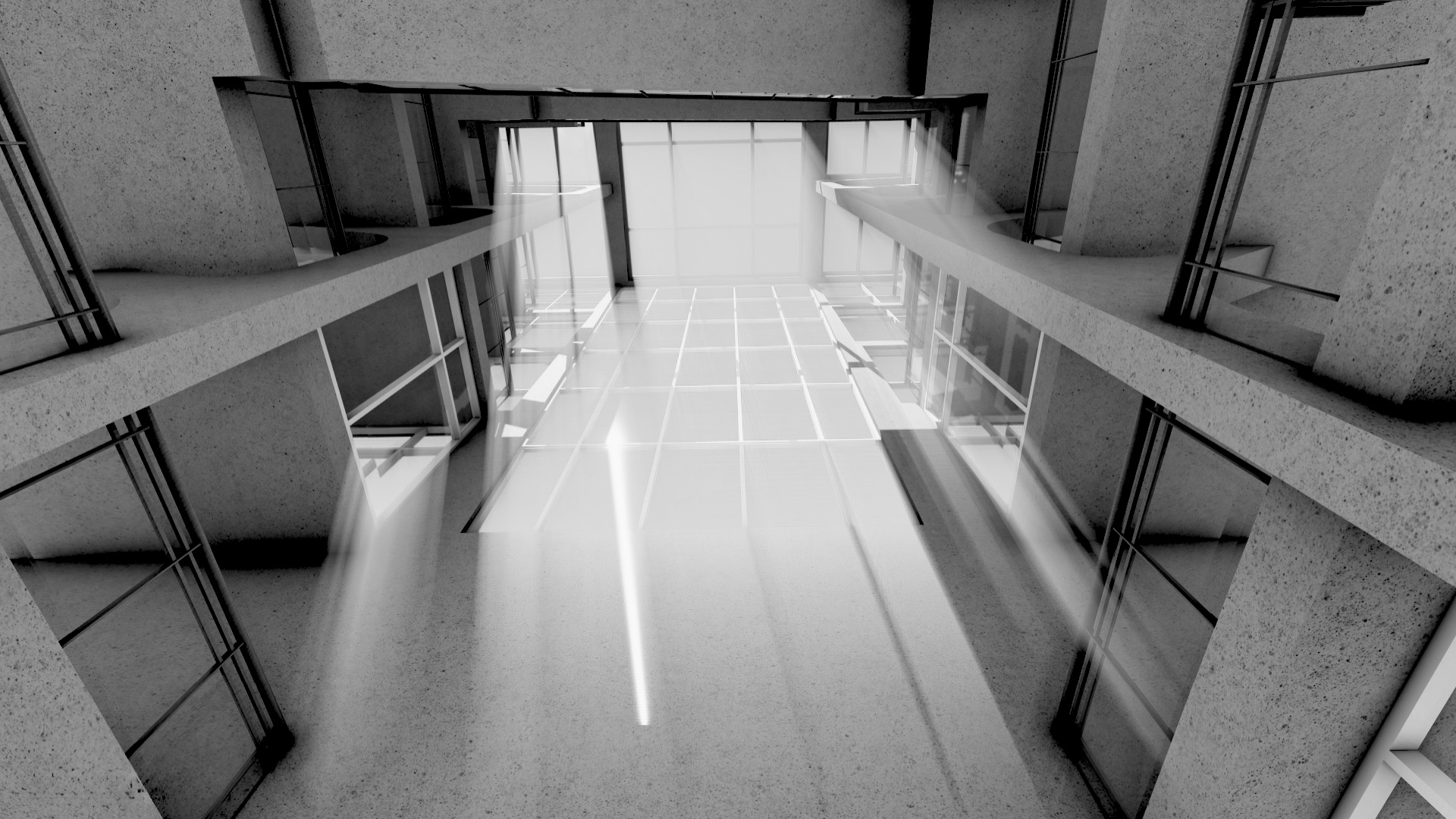




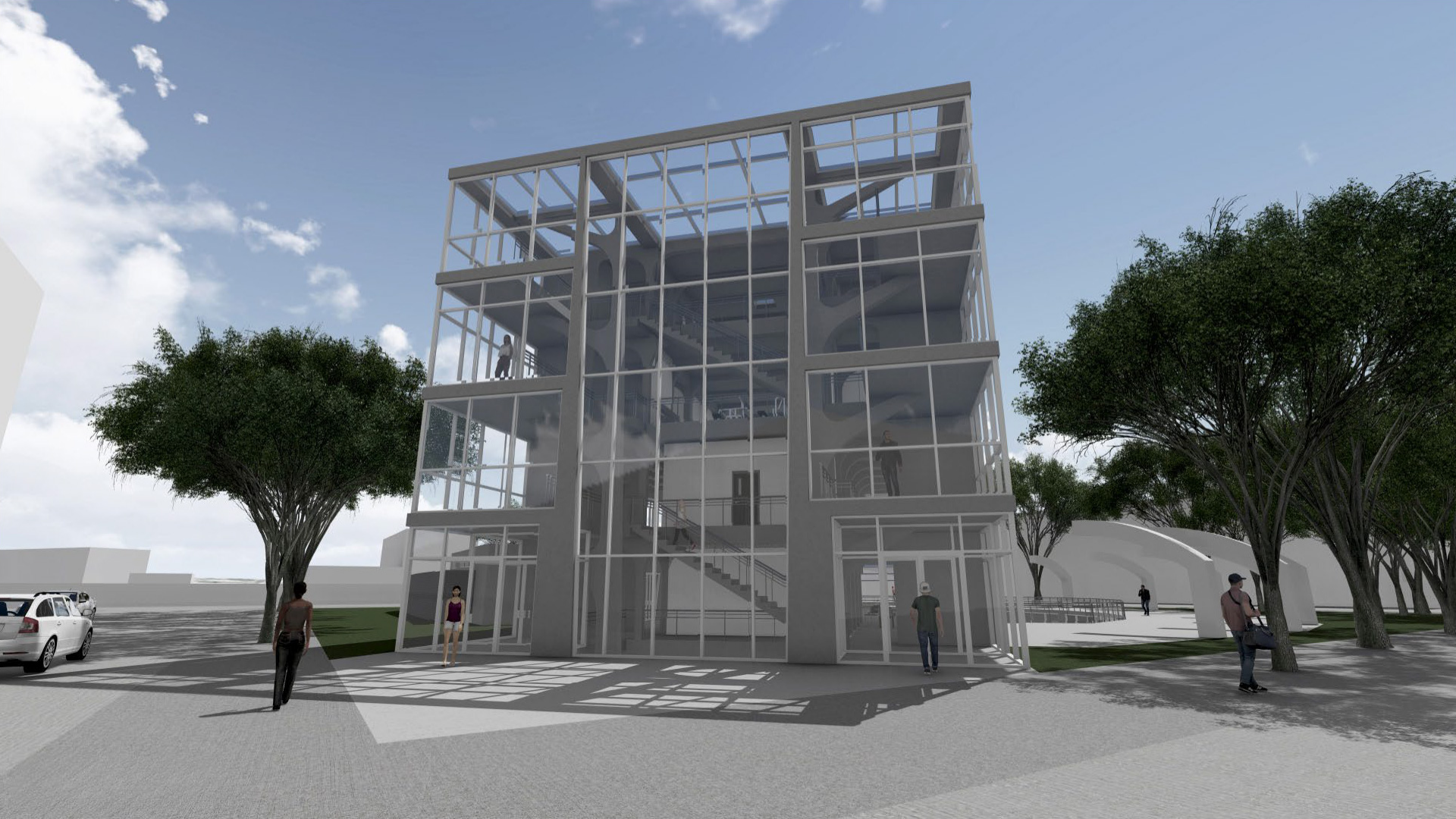




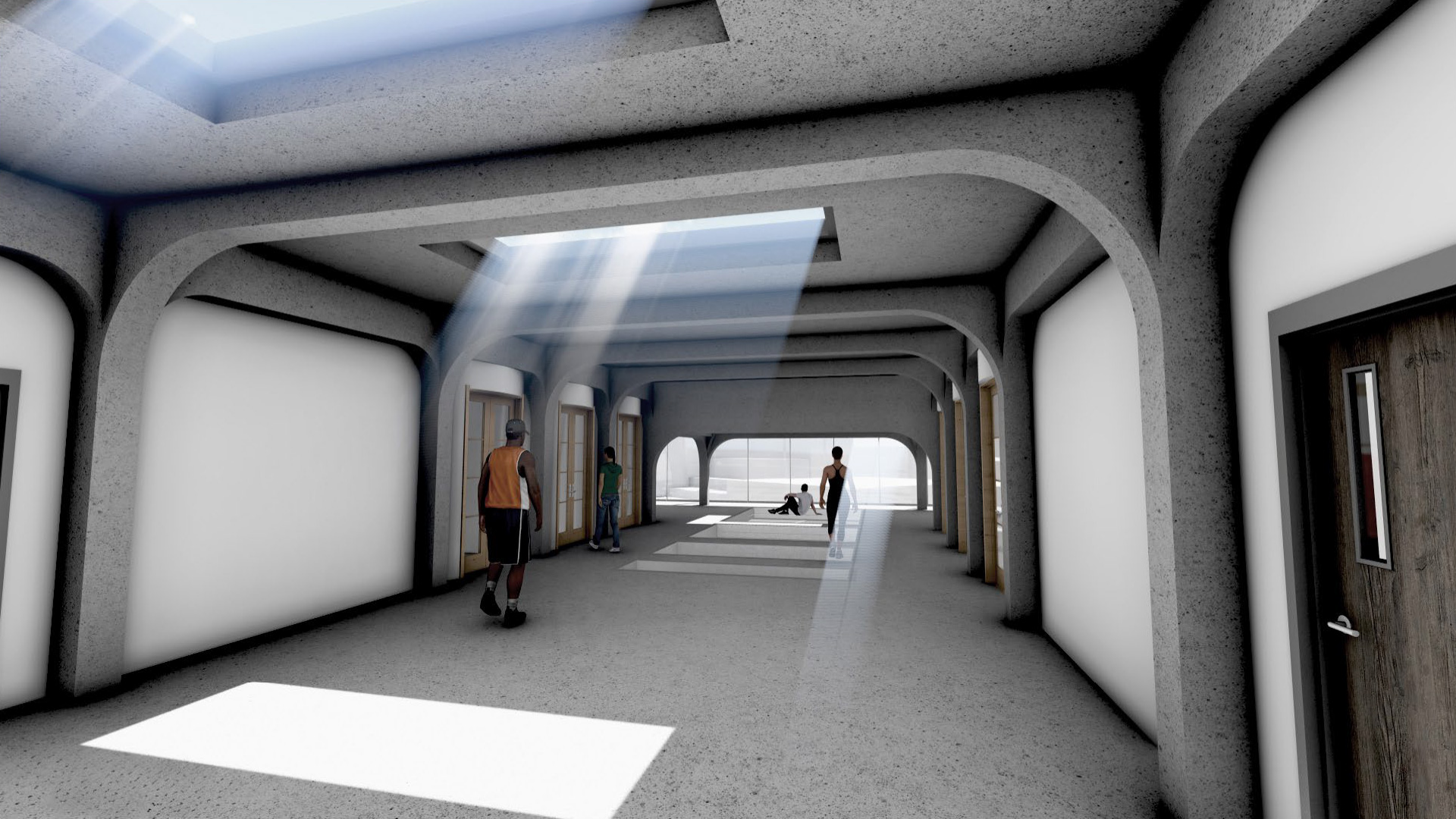






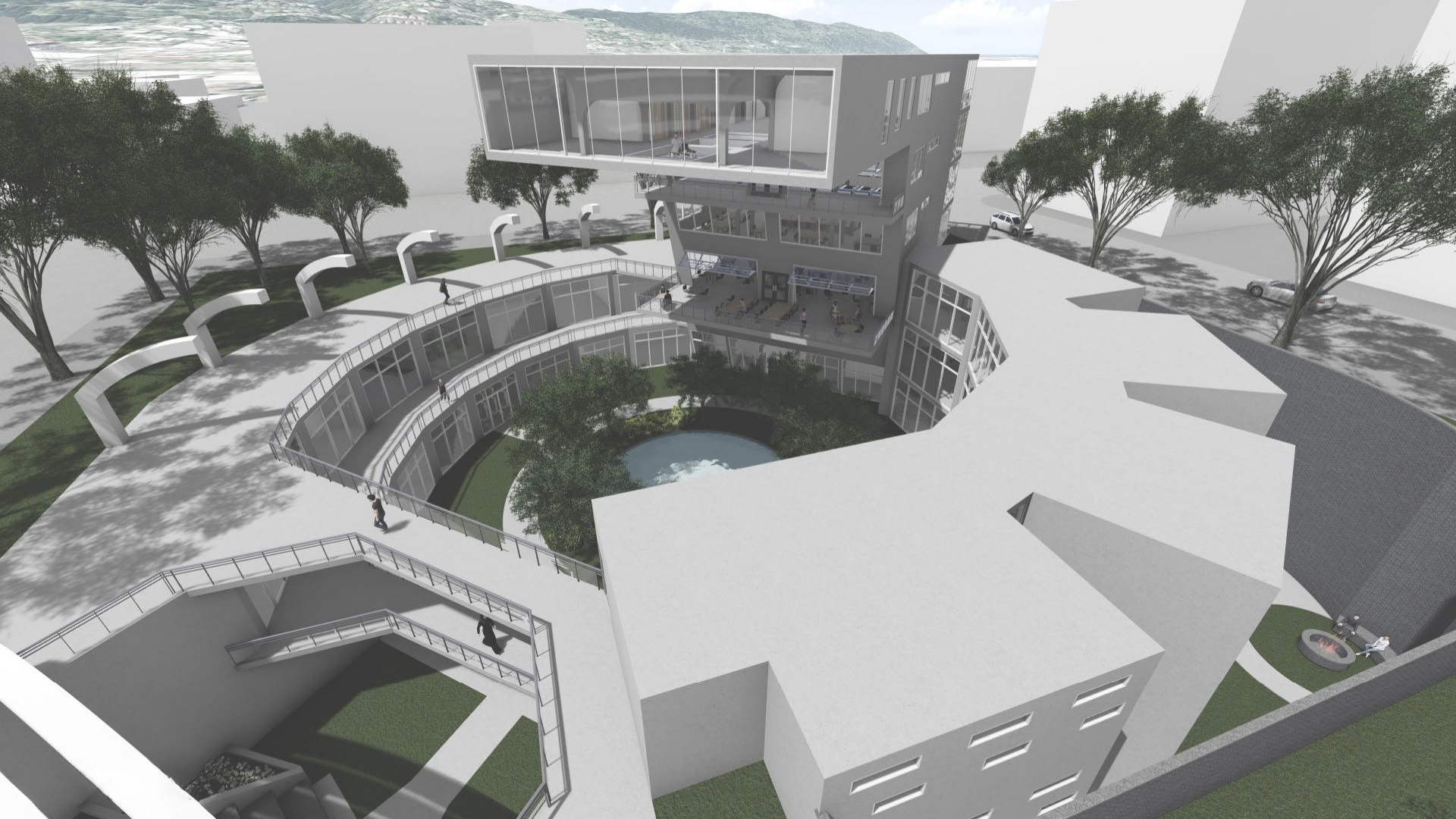




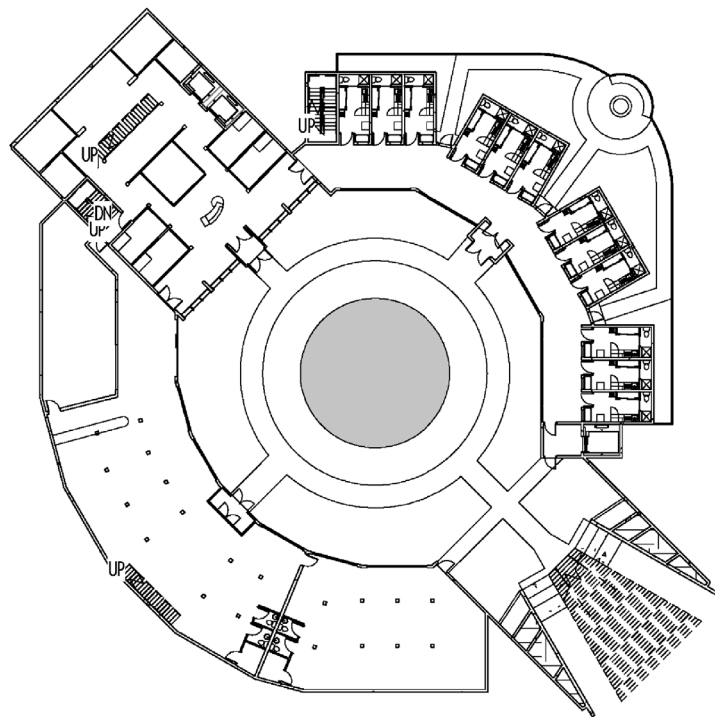




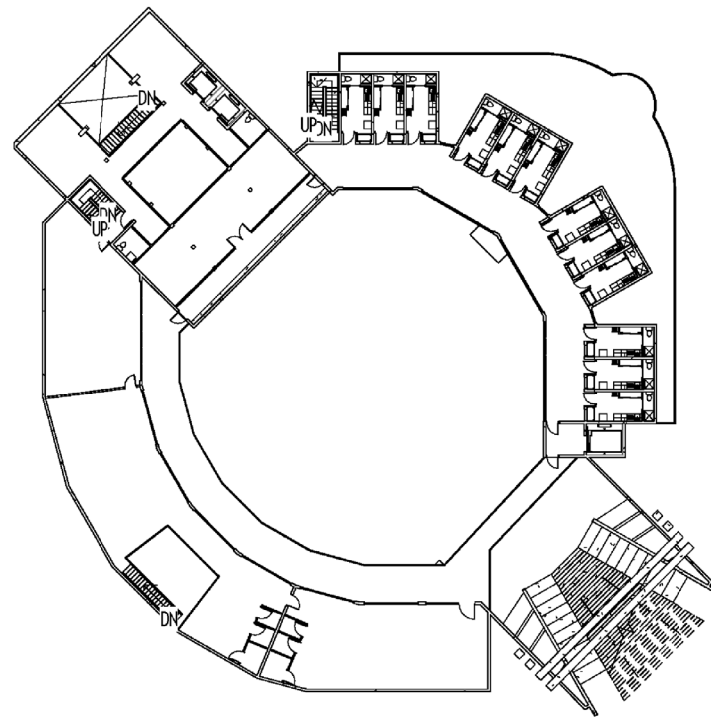




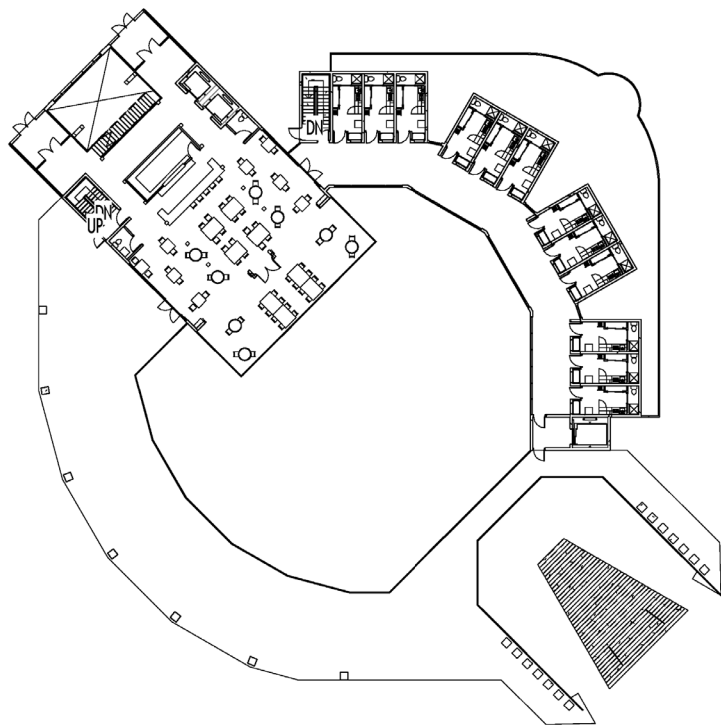
Level B2



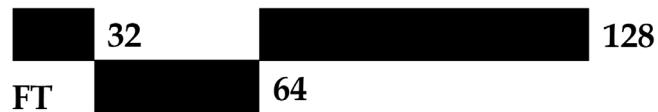
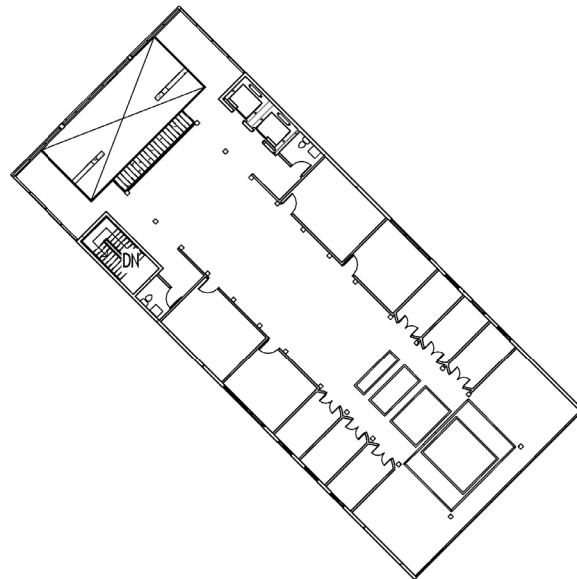
Level B1



# Level 1 (Ground)

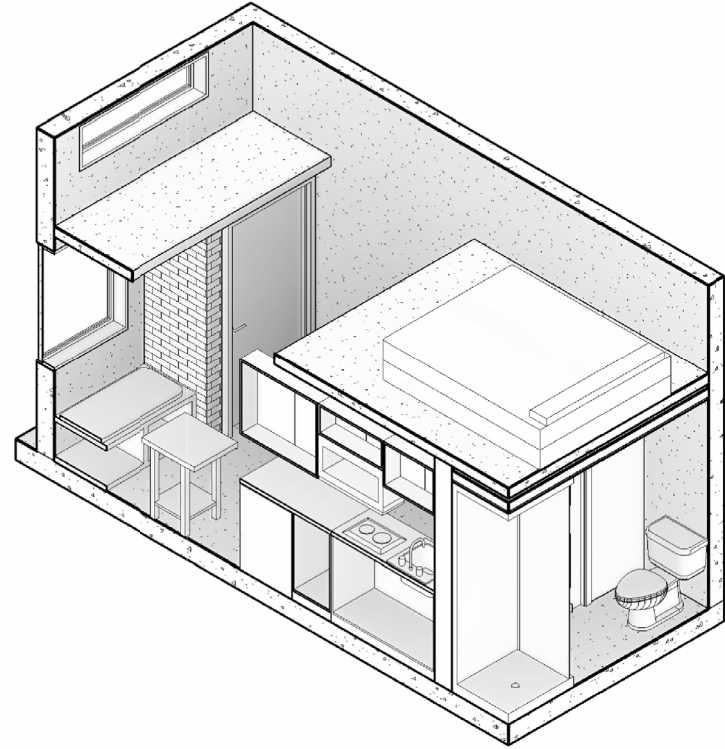
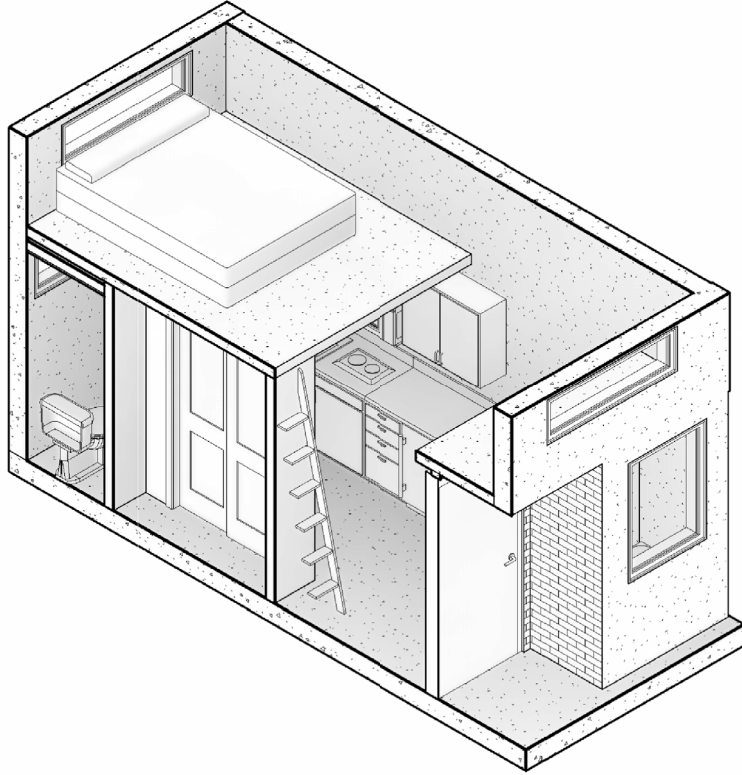


# Level 4 (Top Floor)

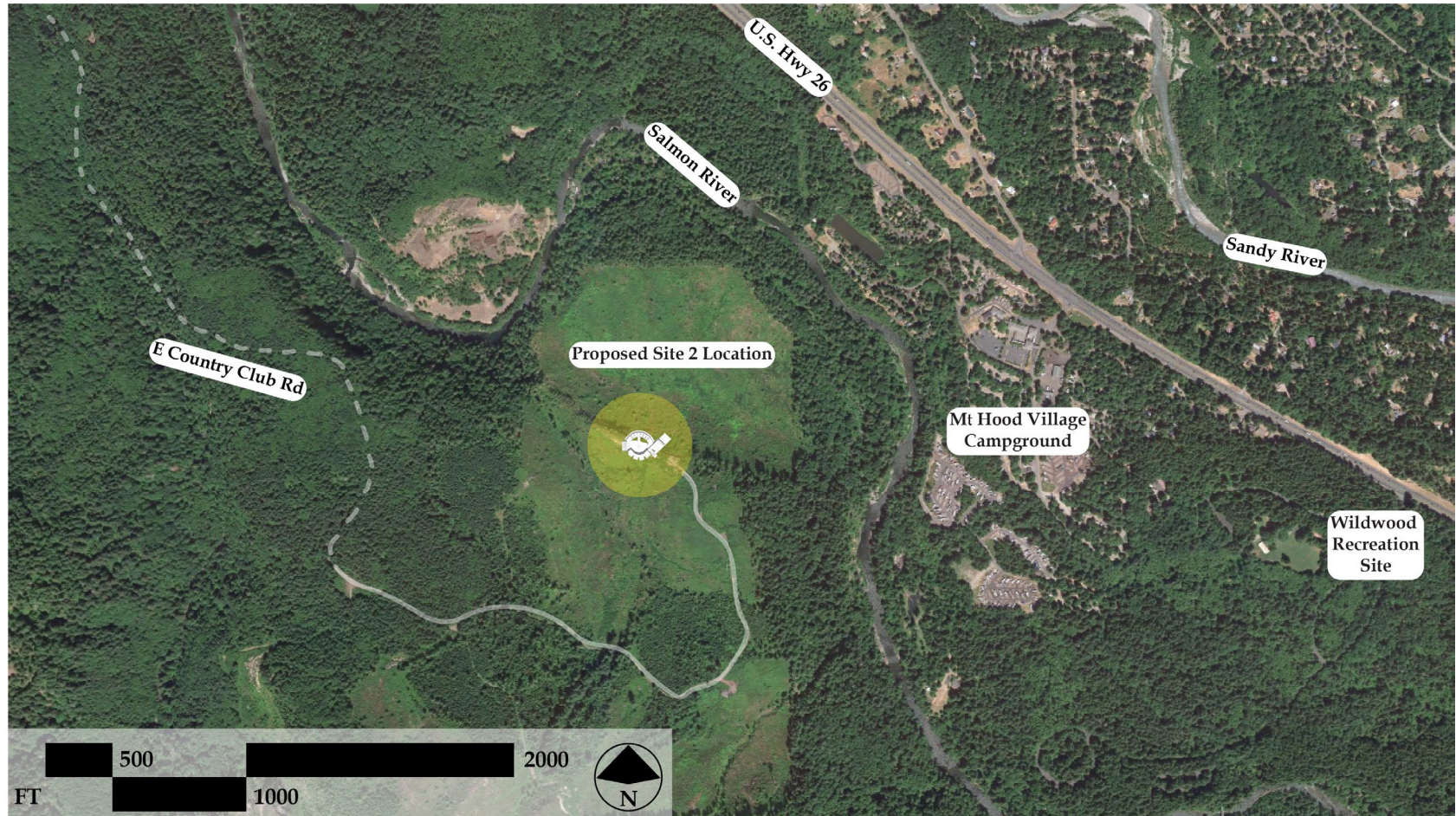




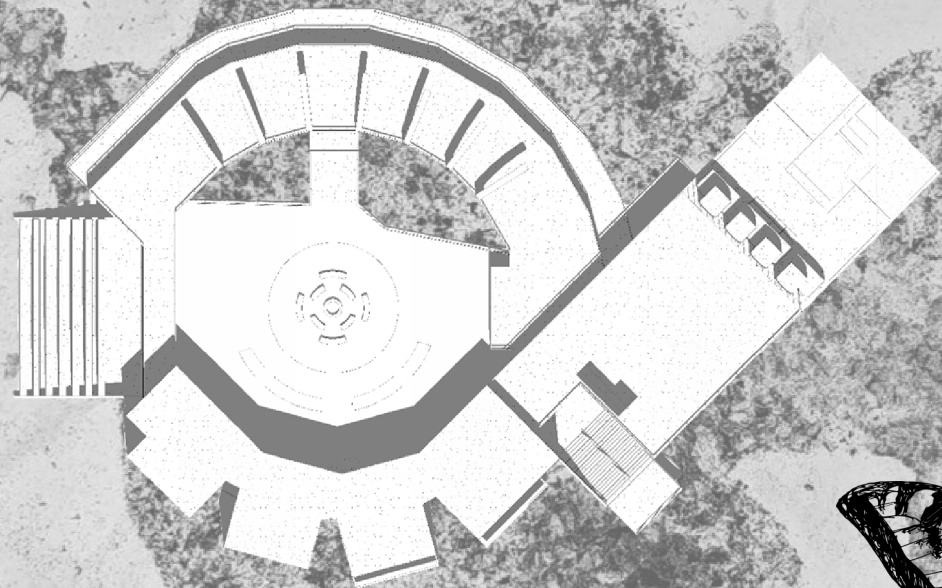
# Axonometric View of Living Pods

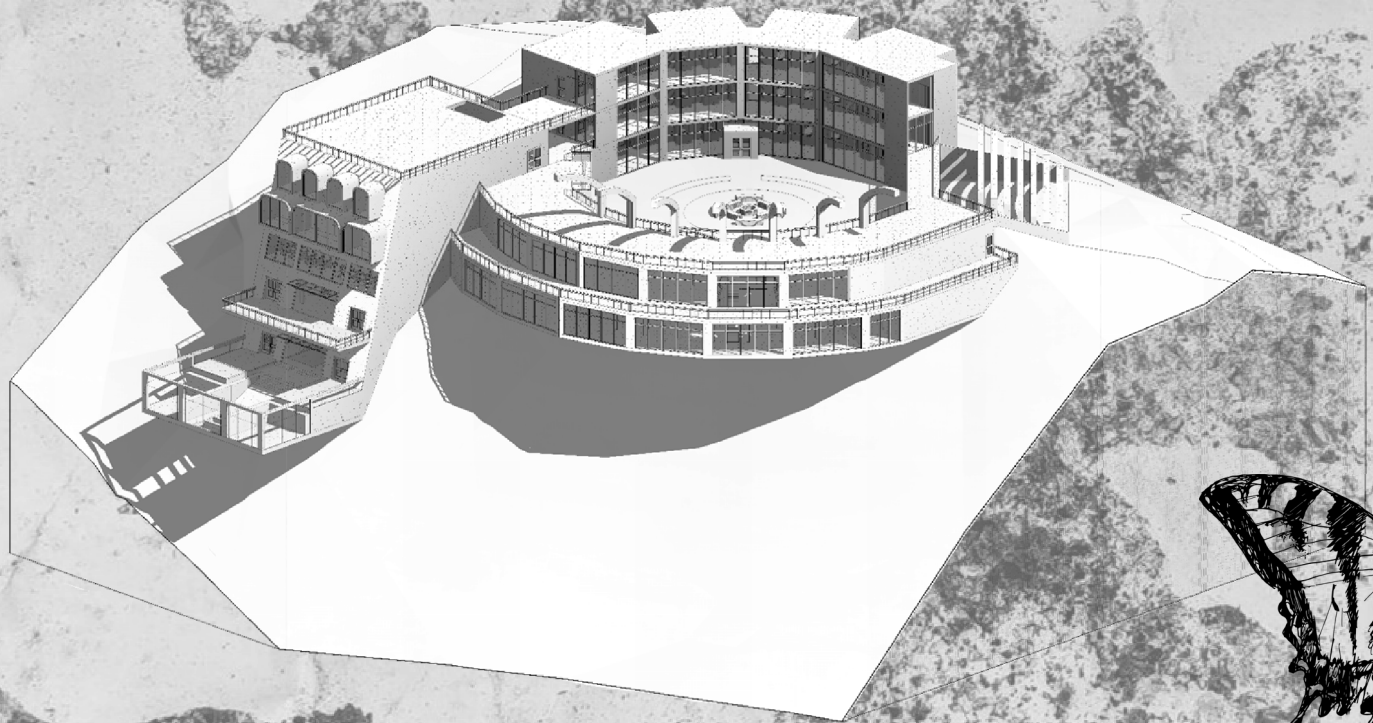


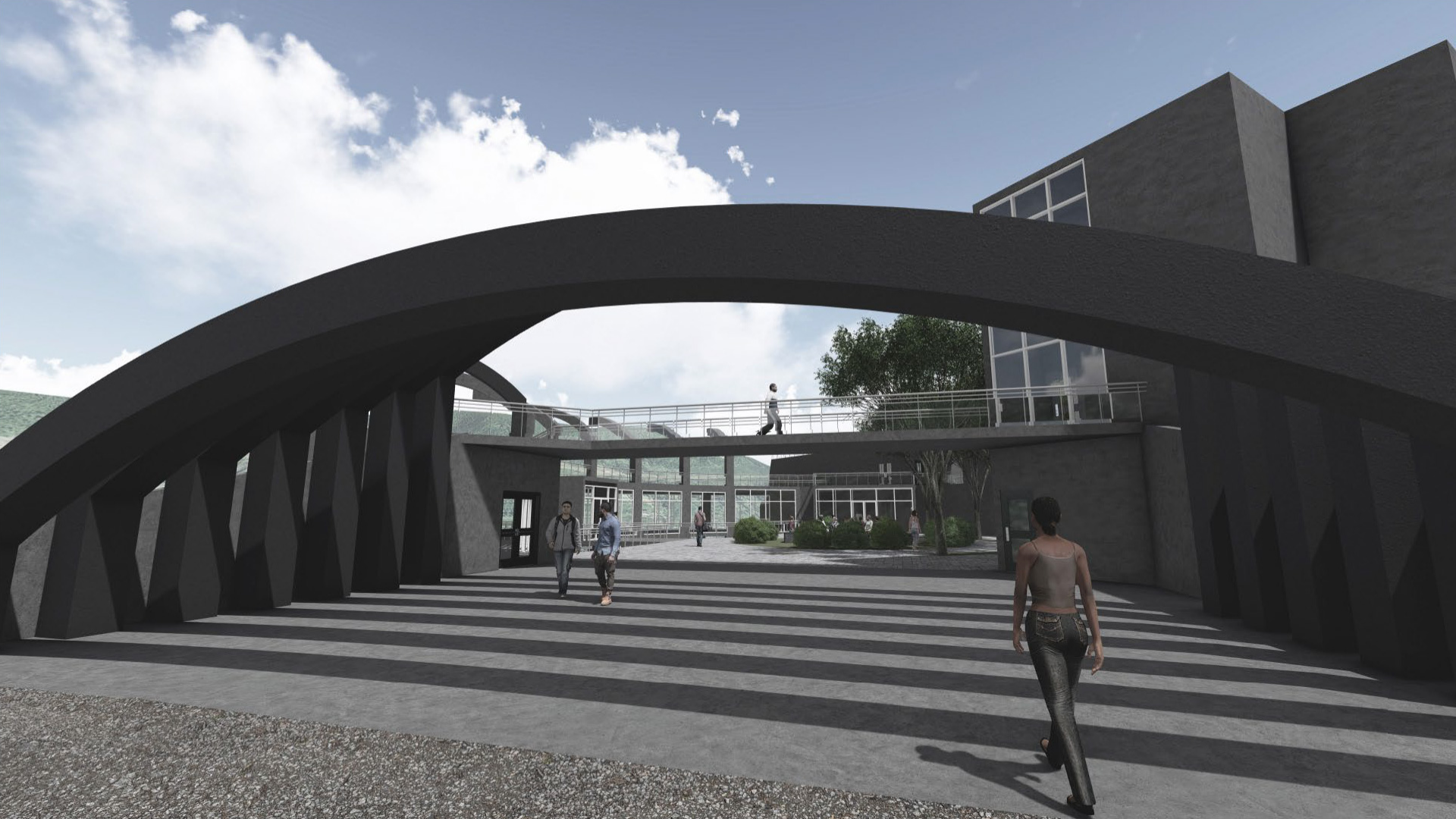
SITE #2 – THE NETHER: 45° 21'34"N 122° 00'37"W, OUTSIDE OF MT. HOOD VILLAGE, OR

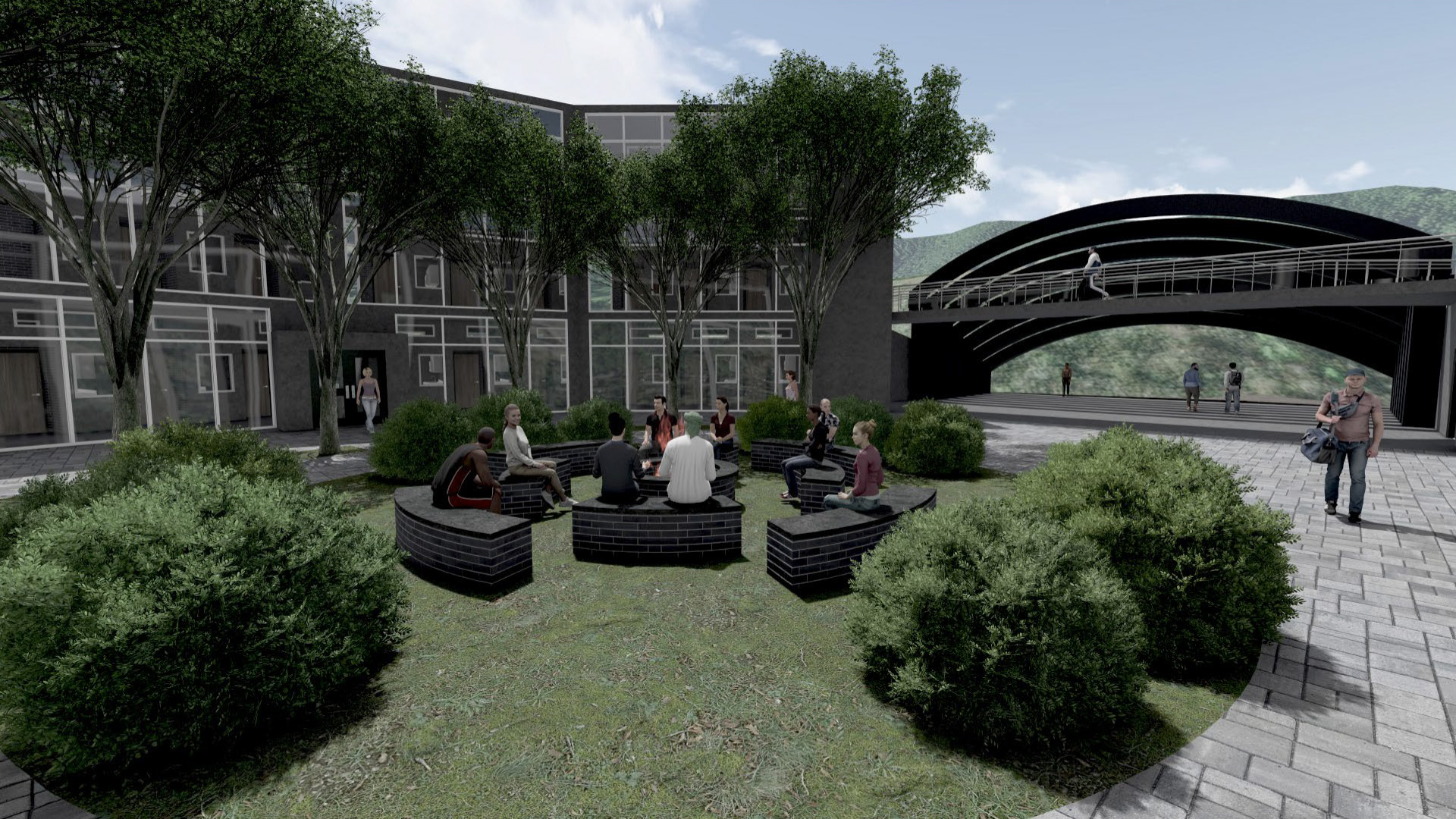


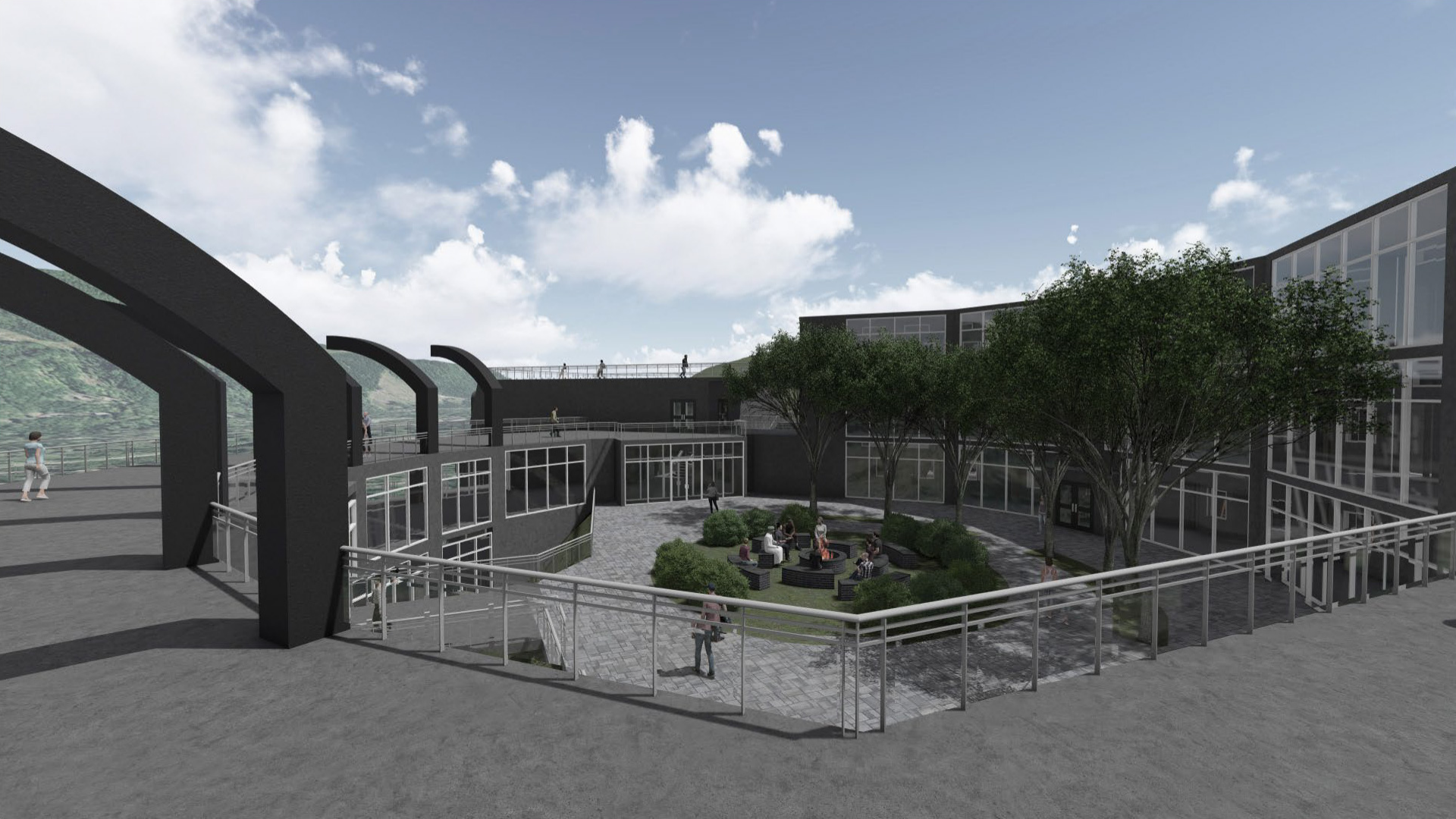






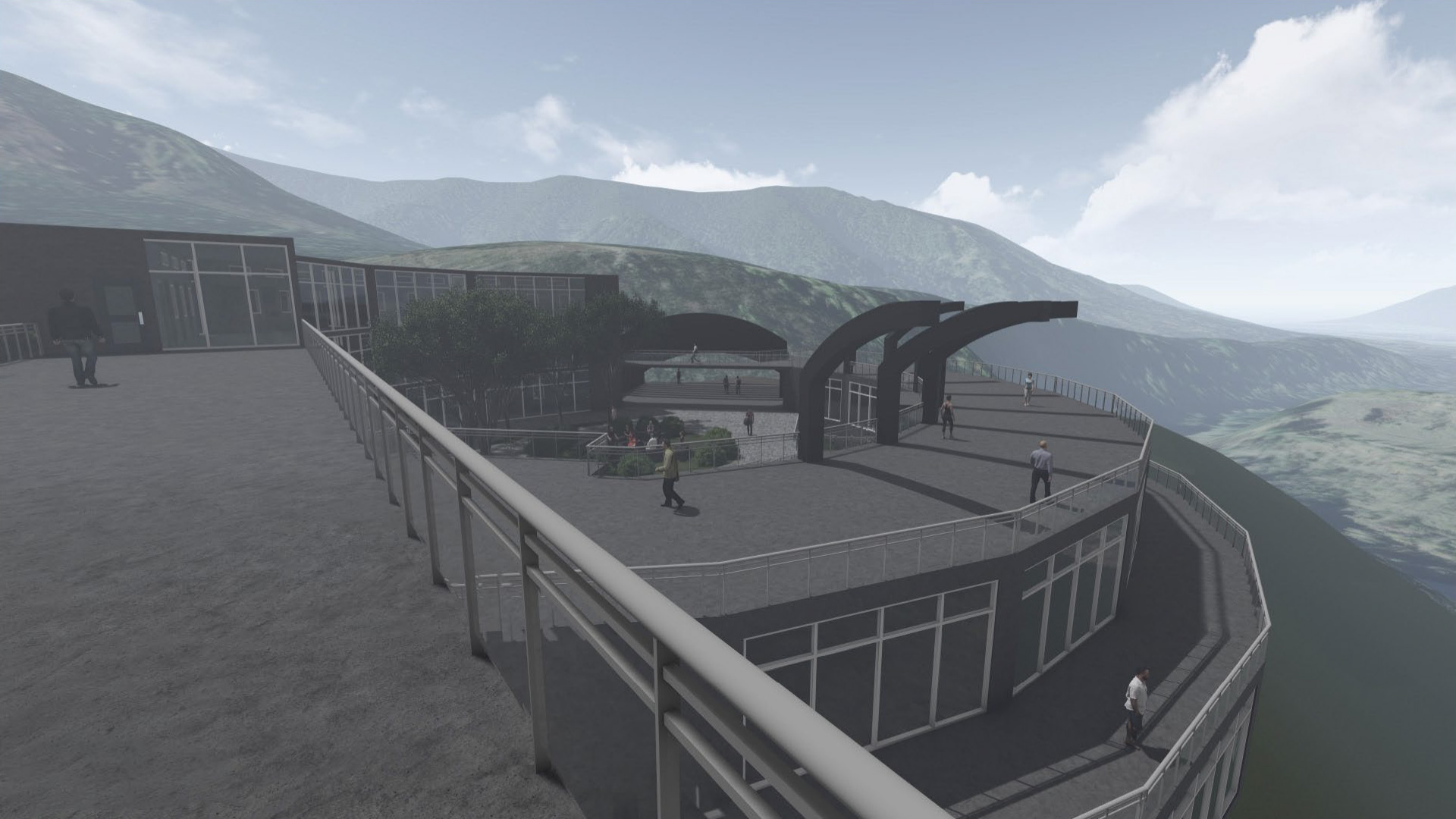










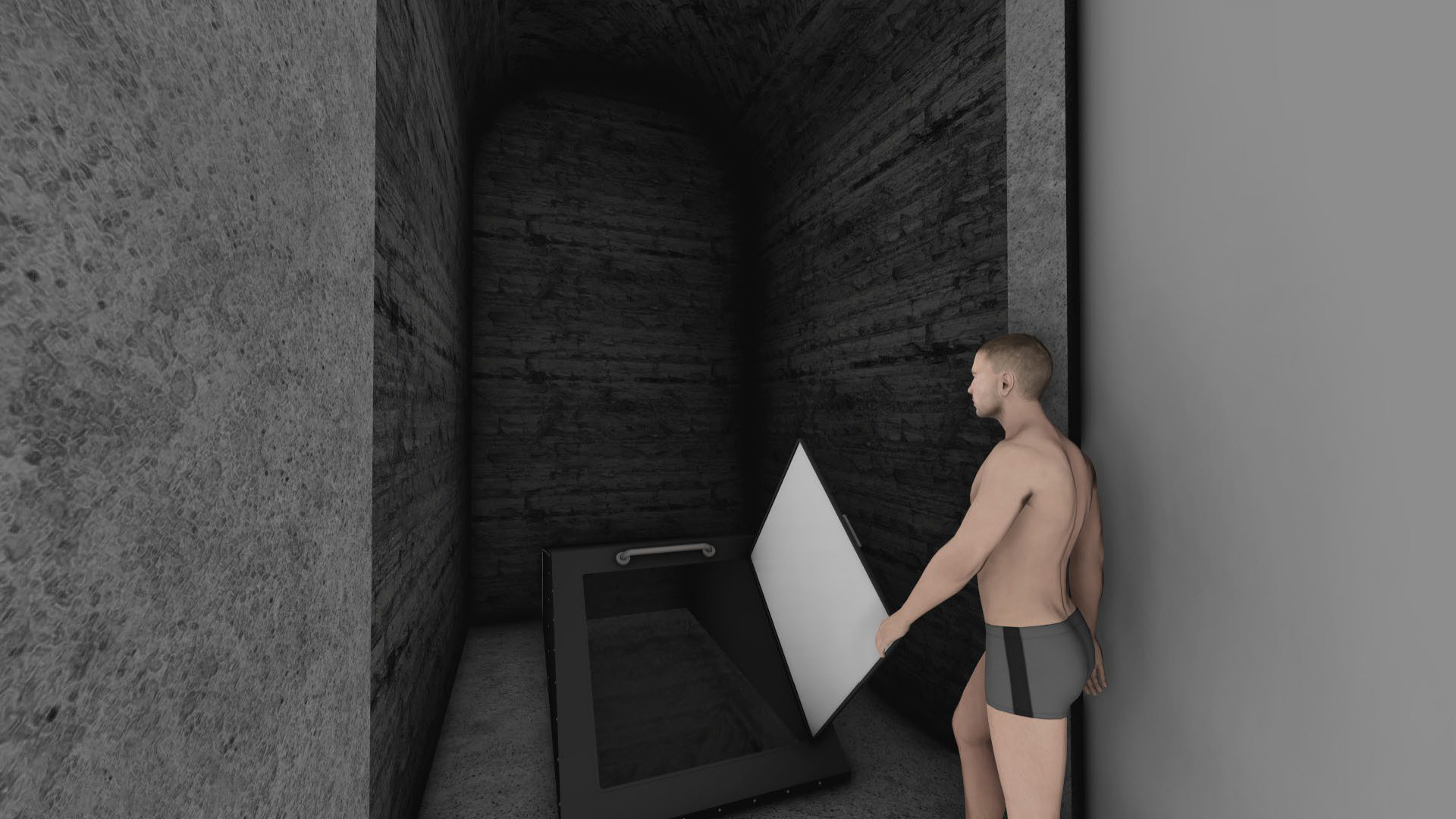


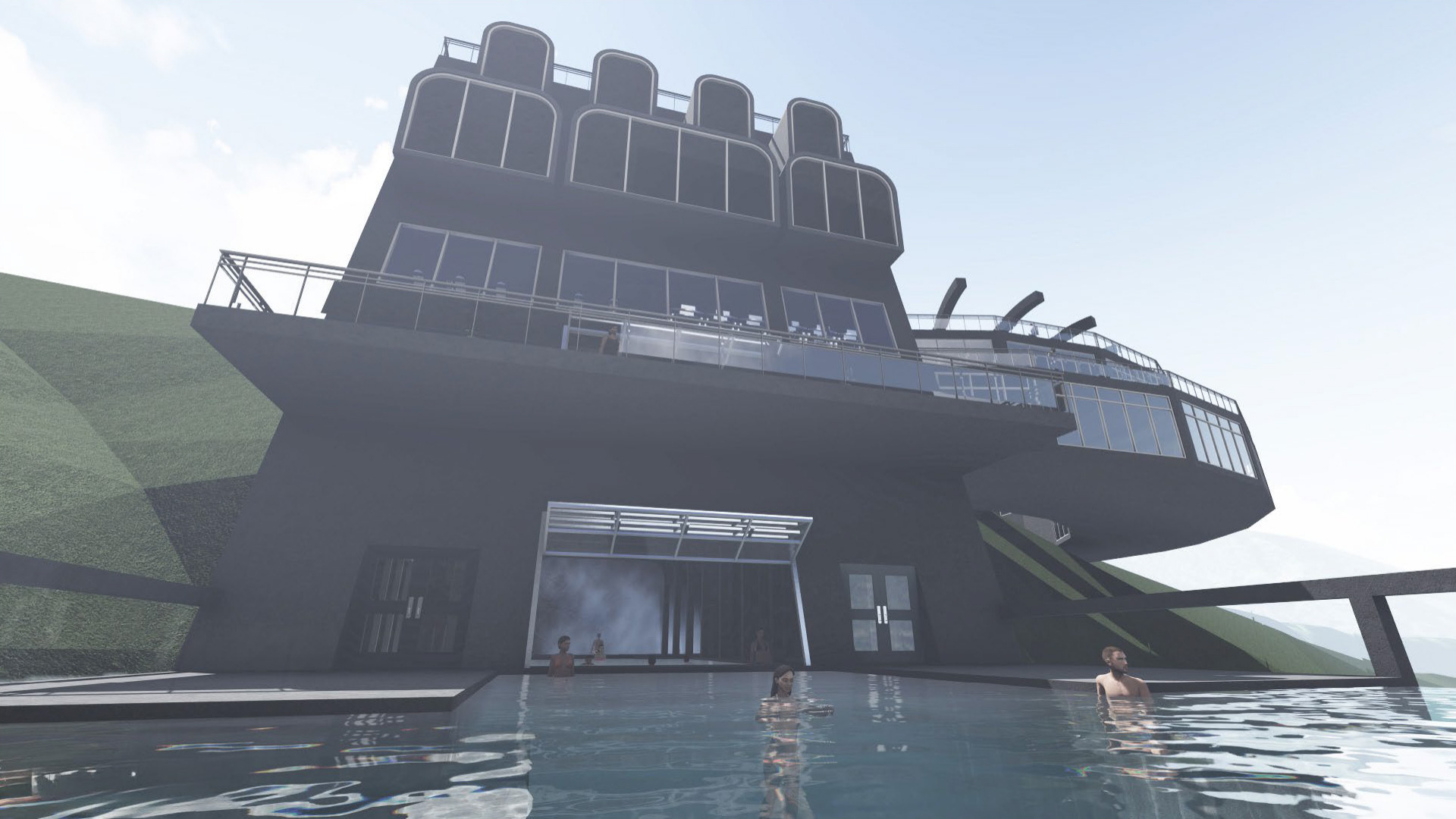






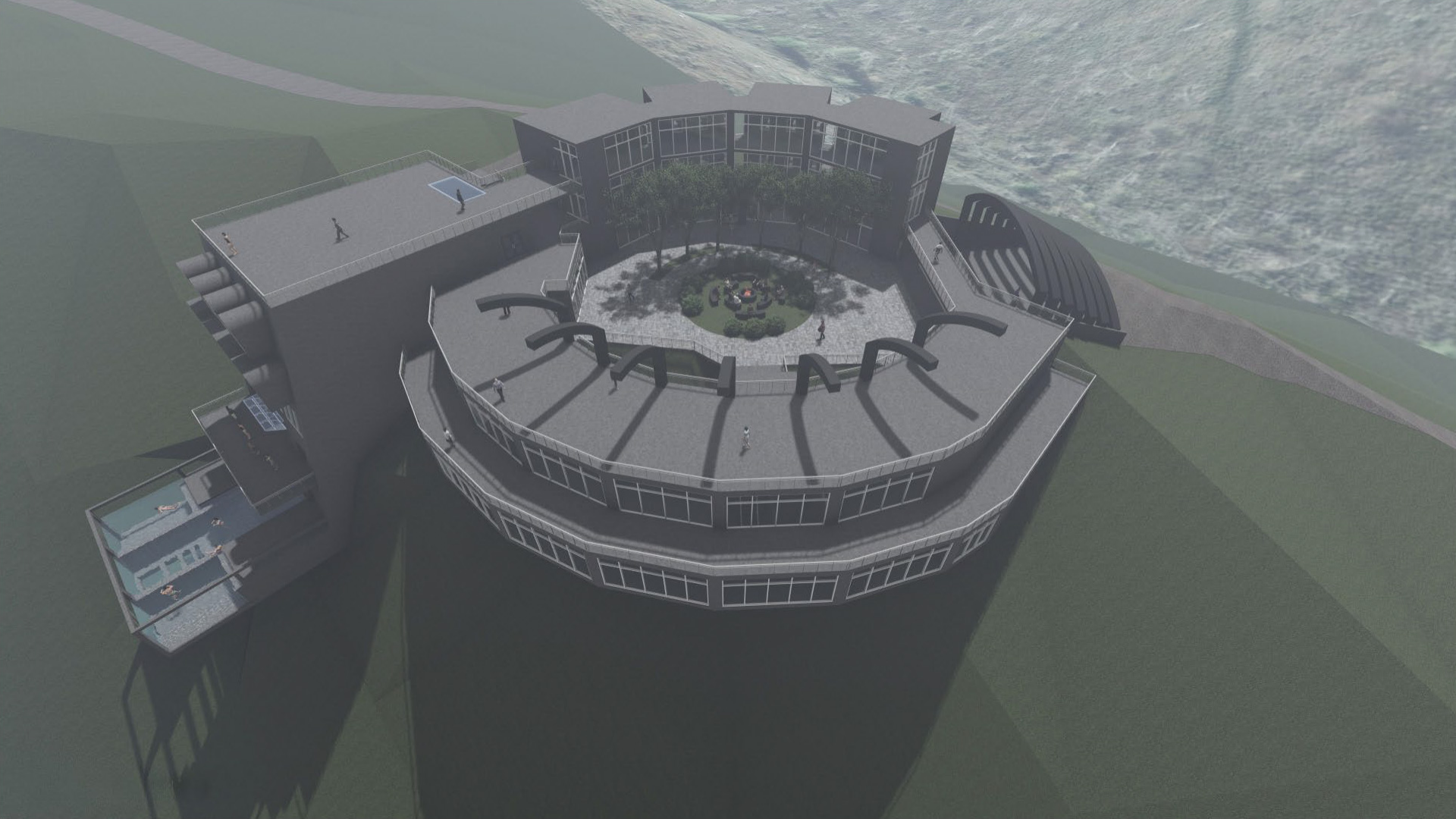






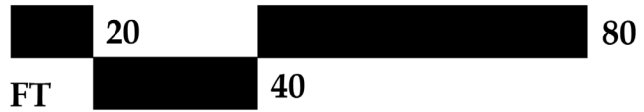
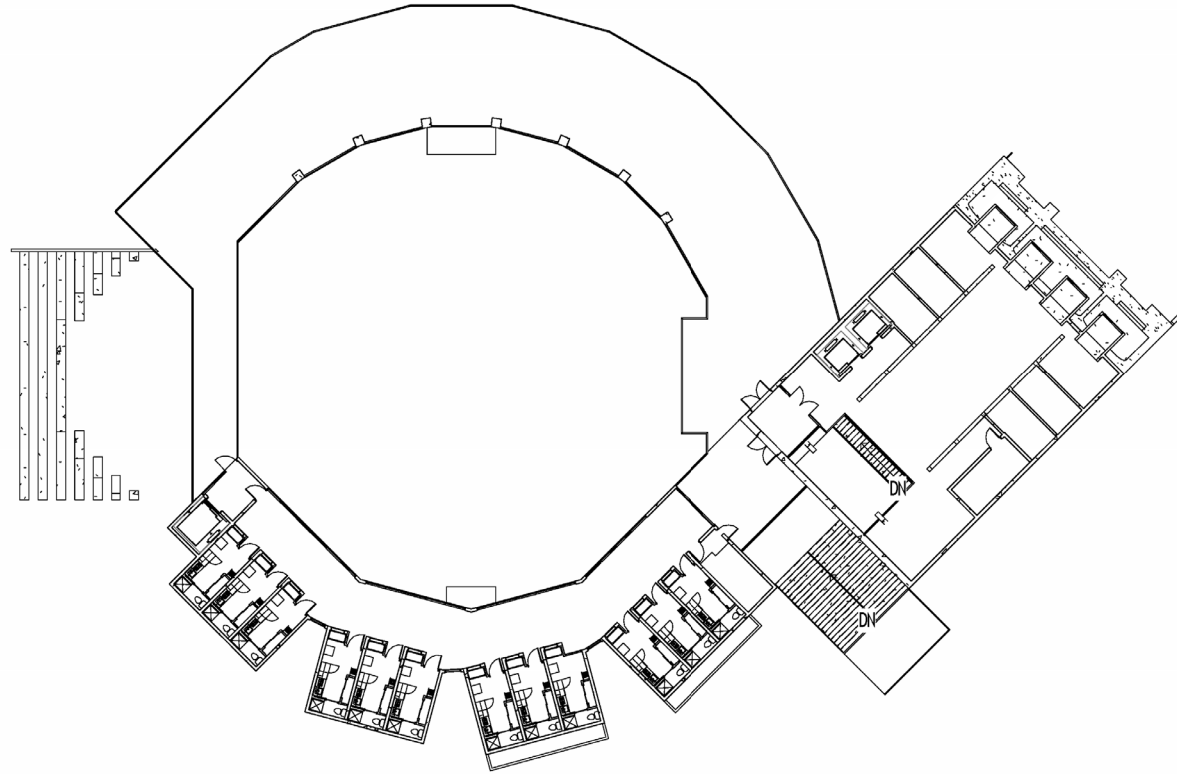




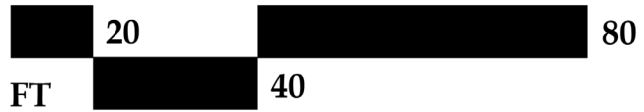
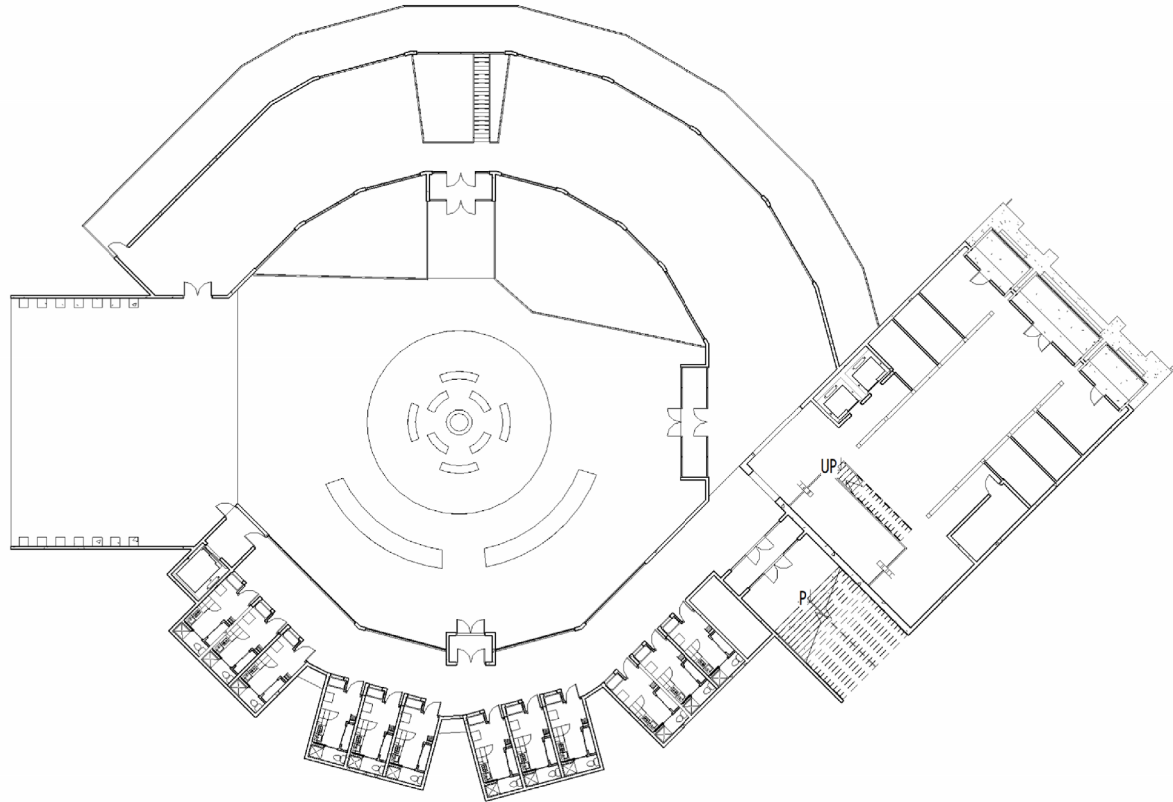




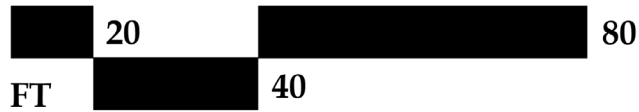
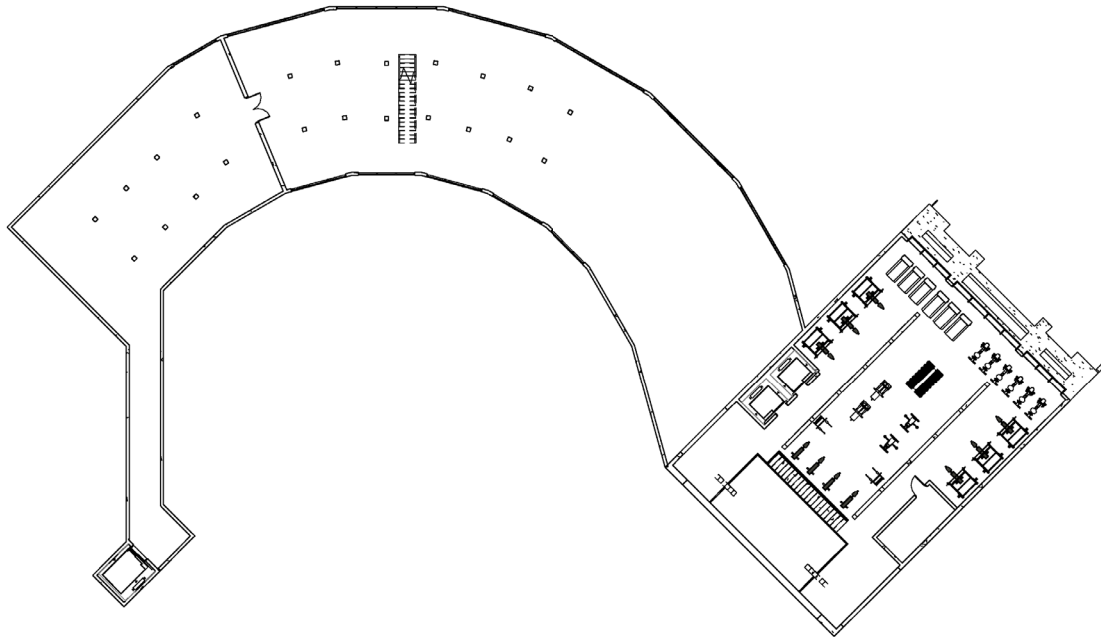
# Level 2



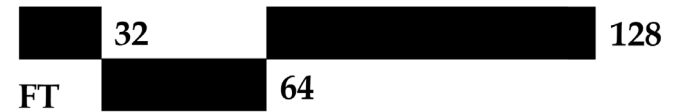
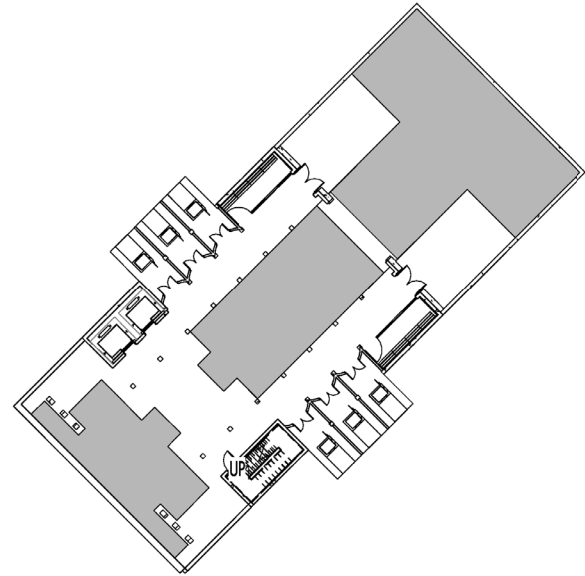
# Level 1 (Ground)

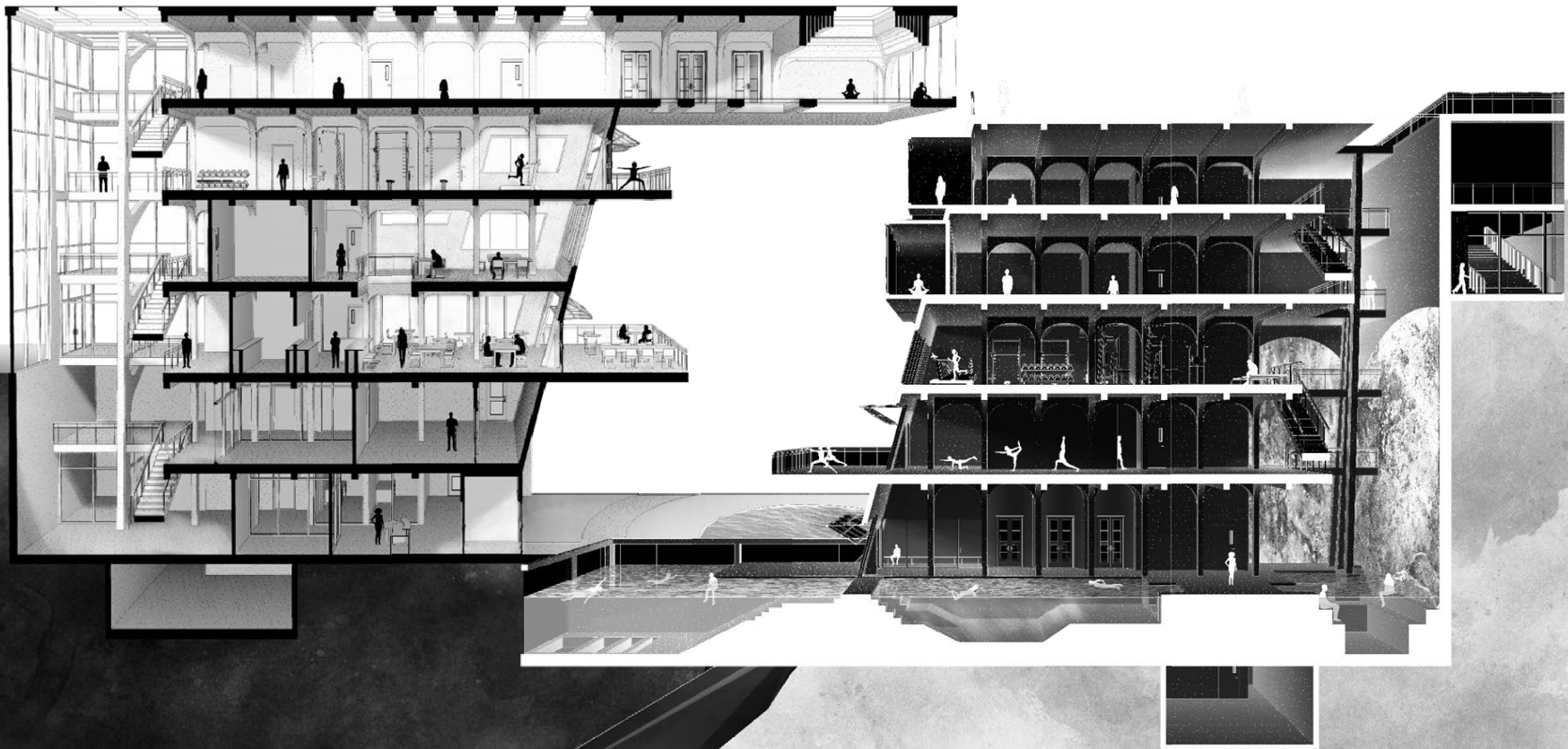


# Level B1



# Level B3 (Bottom Floor)







# FINAL THOUGHTS





THANK YOU!

# FIGURE CITATIONS

- *Figure 1.* Edited version of “Flesh of the Gods” by Alex Grey. Adapted from “Flesh of the Gods,” by Alex Grey, 2021, Retrieved from <https://www.alexgrey.com/art/nature-field/flesh-of-the-gods>
- *Figure 2.* Cover of the book “The Enigma of Health”. Adapted from “The Enigma of Health: The Art of Healing in a Scientific Age,” by Hans-Georg Gadamer, 1996, Retrieved from <https://www.sup.org/books/title/?id=2120>
- *Figure 3.* An illustration of the Bedlam Insane Asylum, from an 18th-Century engraving by William Hogarth. Adapted from “Illustration of Bedlam,” by William Hogarth, 1735, Retrieved from <https://www.abc.net.au/news/health/2016-08-02/mental-illness-and-insanity-a-short-cultural-history/7677906>
- *Figure 4.* Patients at Willowbrook State School, on Staten Island, in January 1972. Retrieved from <https://www.nytimes.com/2018/03/12/opinion/asylums.html>
- *Figure 5.* Patients sit inside Ohio's Cleveland State Mental Hospital in 1946. Retrieved from <https://allthatsinteresting.com/mental-asylums#10>
- *Figure 6.* Headshot of Martin Heidegger. Retrieved from <https://www.thefamouspeople.com/profiles/martin-heidegger-4970.php>
- *Figure 7.* Iceberg illustration representative of the conscious and unconscious mind. Retrieved from <https://www.pinterest.ph/pin/479985272789075393/>
- *Figure 8.* Headshot of Carl Jung. Retrieved from <https://www.britannica.com/biography/Carl-Jung#/media/1/308188/222646>
- *Figure 9.* Diagram of Carl Jung’s primary archetypes. Retrieved from <https://www.carolspearson.com/about/about-archetypes-c-g-jung-and-depth-psychology>
- *Figure 10.* Image of “Flesh of the Gods” by Alex Grey. Adapted from “Flesh of the Gods,” by Alex Grey, 2021, Retrieved from <https://www.alexgrey.com/art/nature-field/flesh-of-the-gods>
- *Figure 11.* Image of “Wonder” by Alex Grey. Adapted from “Wonder,” by Alex Grey, 1996, Retrieved from <https://www.alexgrey.com/art/transcendental/wonder>
- *Figure 12.* Image of Alex Grey’s “Polar Unity Spiral”. Adapted from “Polar Unity Spiral,” by Alex Grey, 1975, Retrieved from <https://www.alexgrey.com/art/transcendental/polar-unity-spiral/>
- *Figure 13.* Map of the United States with Oregon highlighted. Retrieved from <https://www.guideoftheworld.com/map-of-oregon.html>