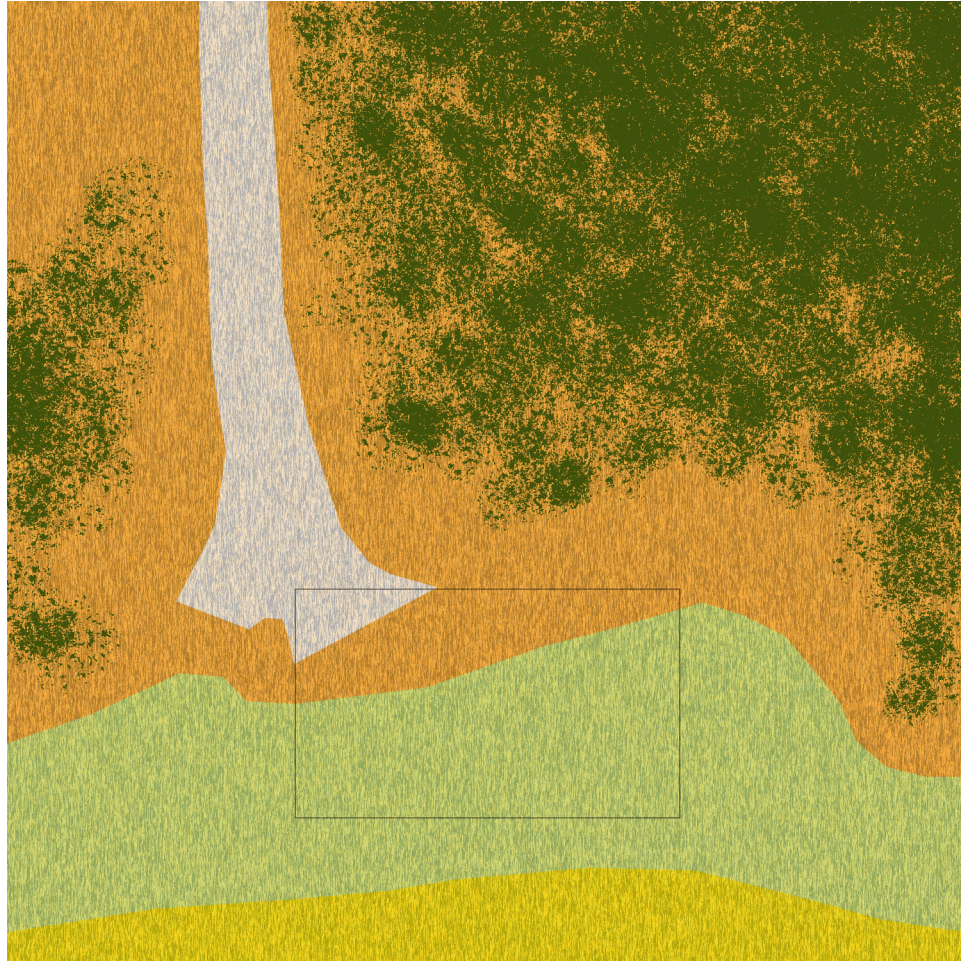


The residential architecture realm primarily exists in high-end real-estate. The versatility and cost effectiveness of timber construction expands to fully custom buildings, providing owners with affordable and sustainable material choices. This helps designers and builders embellish the material and ethicize their process, increasing the value of their work.

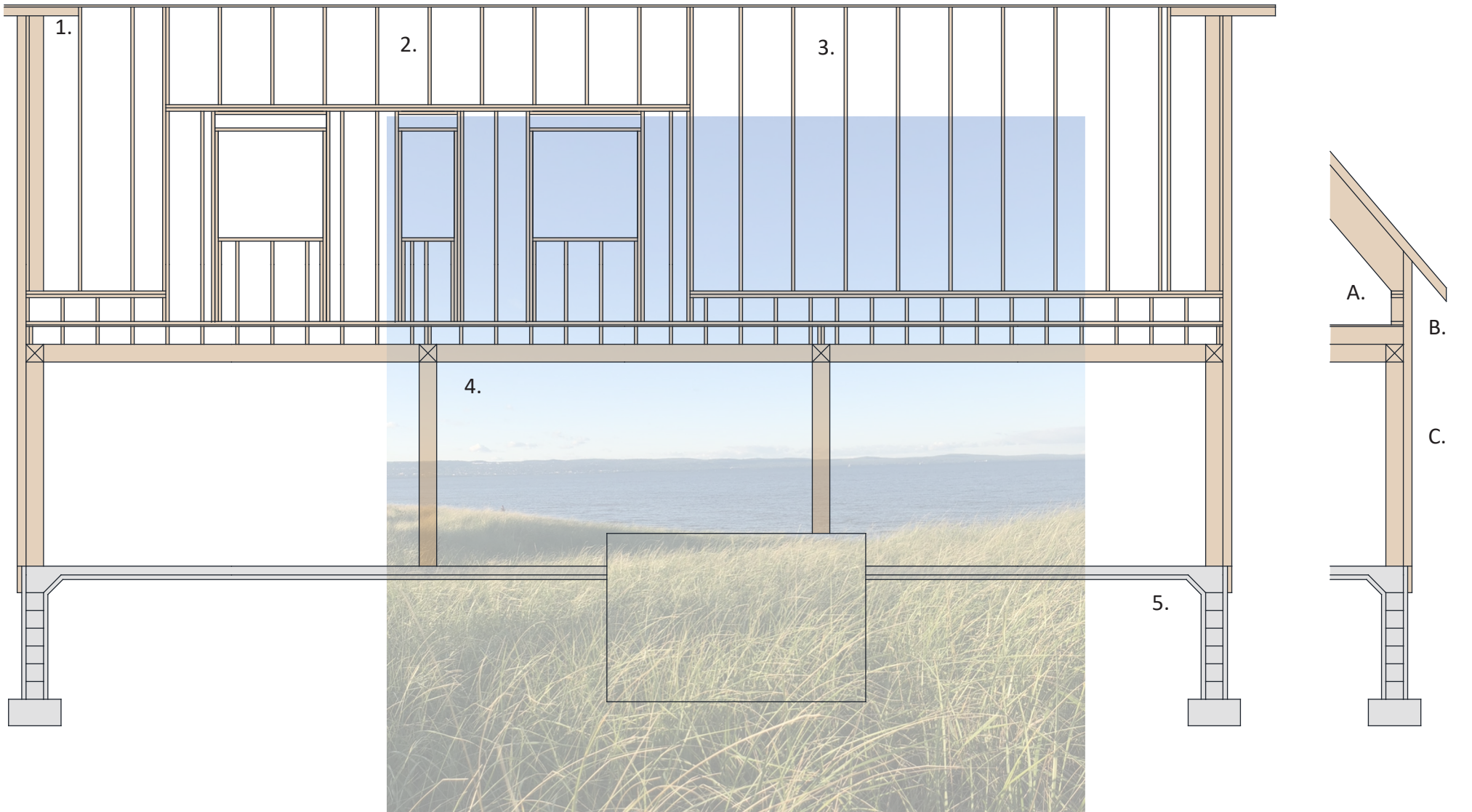


N U V O L E



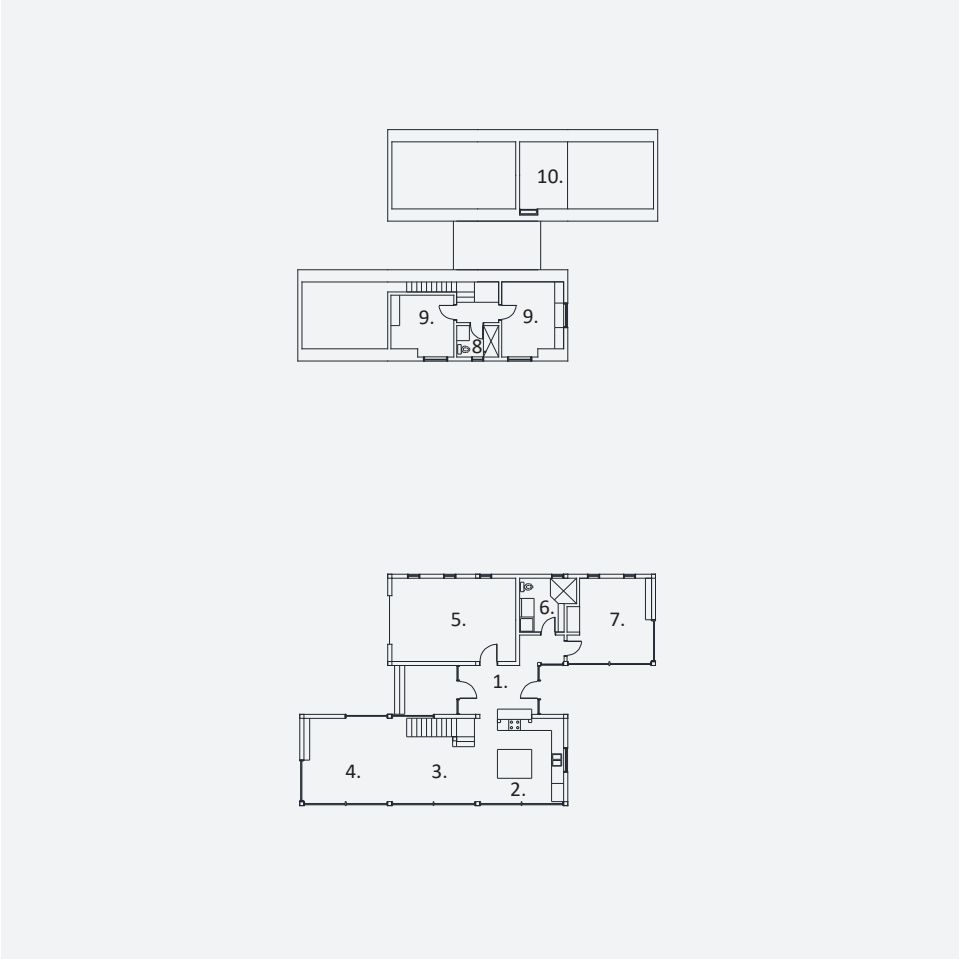
15XX Minnesota Ave W, Duluth MN, 55802





1. Exterior walls balloon framed to lookouts
2. Prefabricated trusses above dormer with 16" energy heel
3. Prefabricated trusses
4. Square-cut logs form grid structure supporting second level
5. Slab on CMU foundation with filled center for stability

- A. Trusses sit on stud wall
- B. Framed eave extension
- C. Wooden siding and vapor barrier attached to log structure



- 1. Entrance
- 2. Kitchen
- 3. Dining
- 4. Living Room
- 5. Garage

- 6. Bathroom / Utility
- 7. Primary Bedroom
- 8. Bathroom
- 9. Bedroom
- 10. Loft

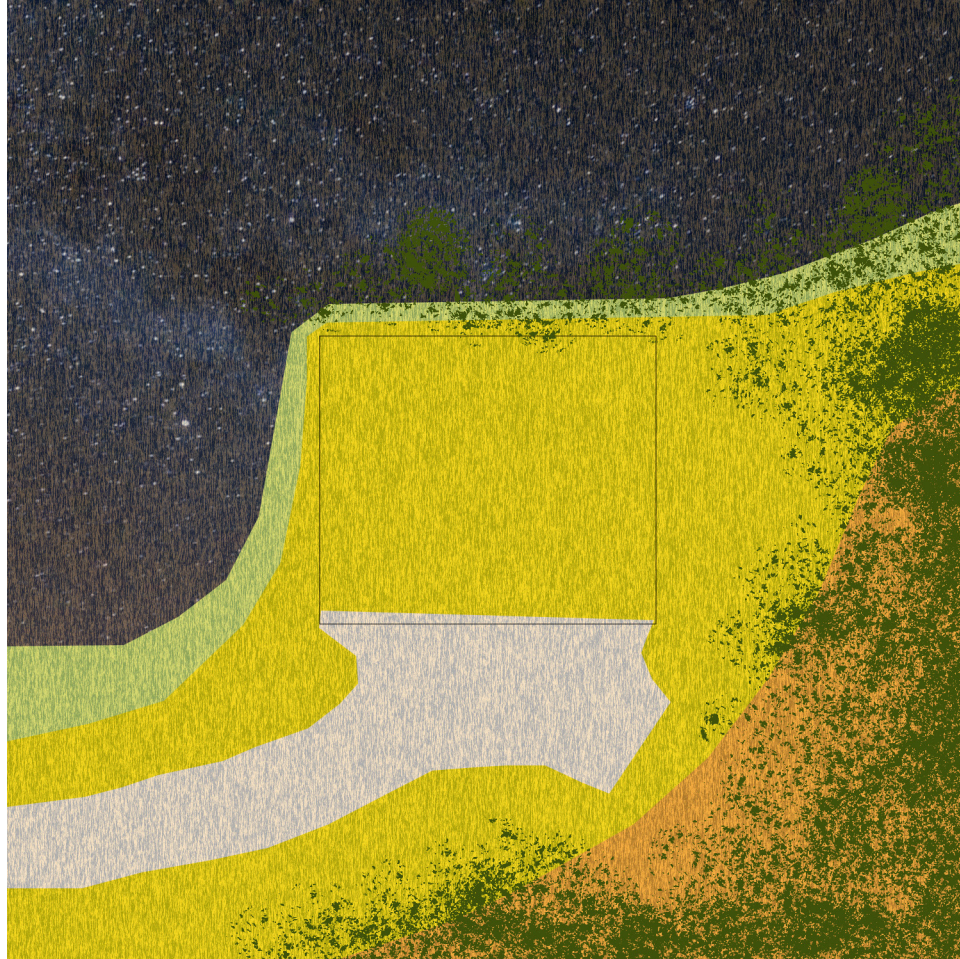






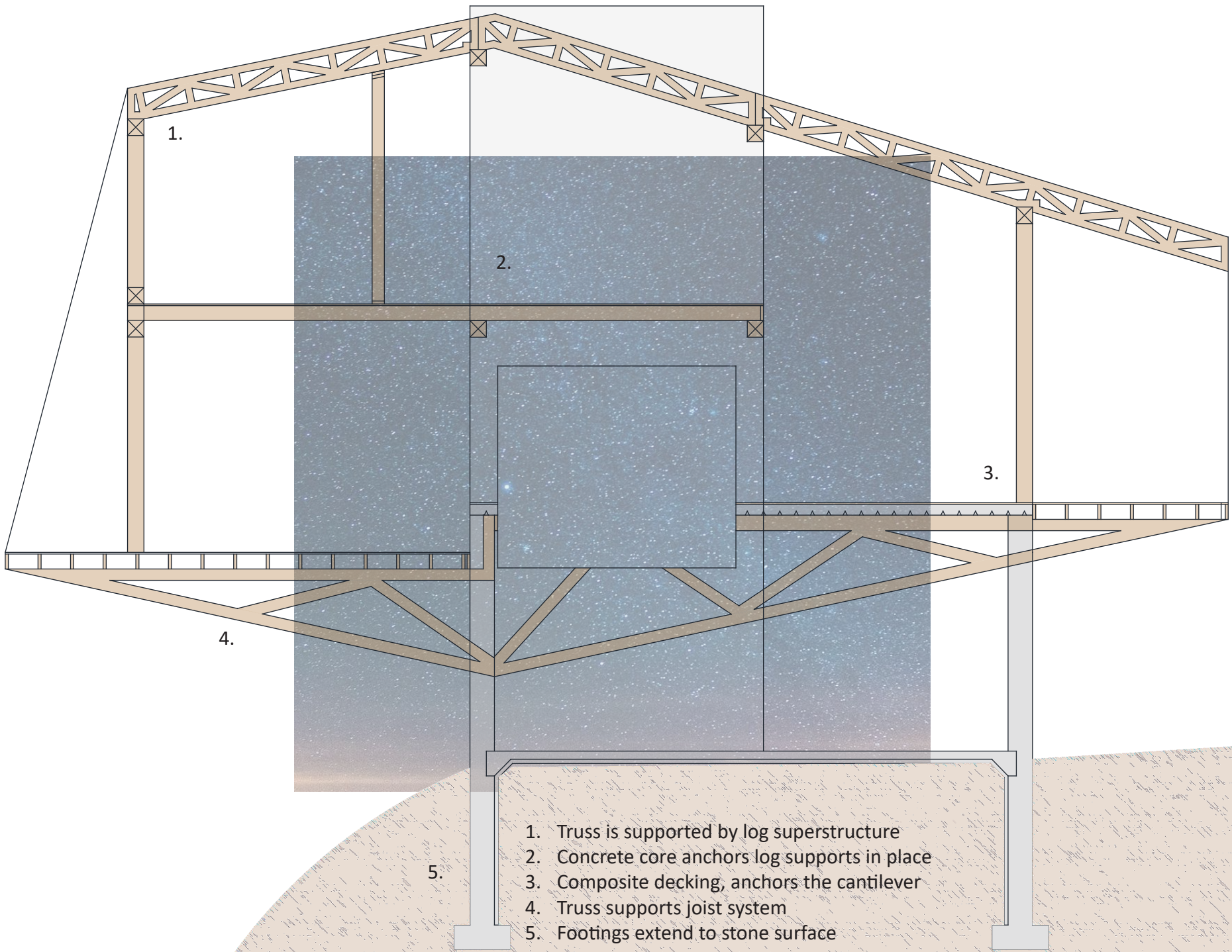
THE WEIRD MACHINE



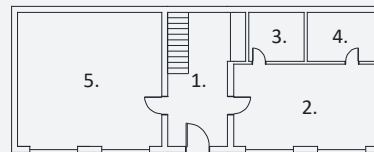
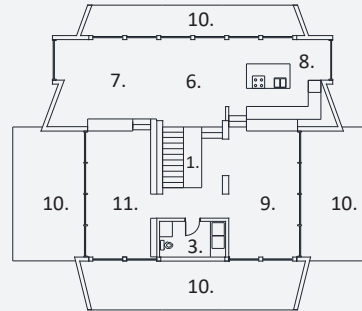
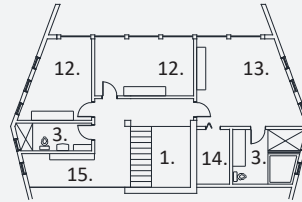


11XX W 8th St, Duluth MN, 55806





- 1. Truss is supported by log superstructure
- 2. Concrete core anchors log supports in place
- 3. Composite decking, anchors the cantilever
- 4. Truss supports joist system
- 5. Footings extend to stone surface



- 1. Stair Hall
- 2. Lounge
- 3. Bathroom
- 4. Utility
- 5. Garage

- 6. Dining Room
- 7. Living Room
- 8. Kitchen
- 9. Family Room
- 10. Deck

- 11. Library
- 12. Bedroom
- 13. Primary Bedroom
- 14. Closet
- 15. Upper Library



