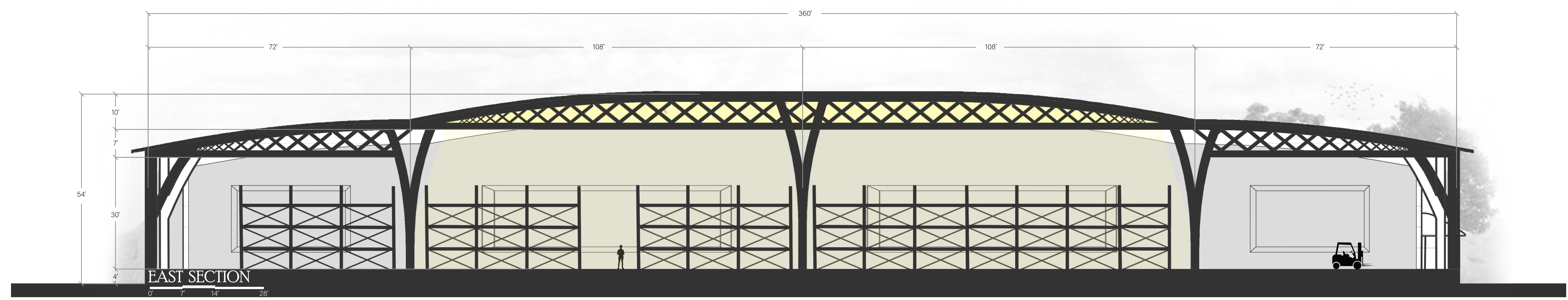
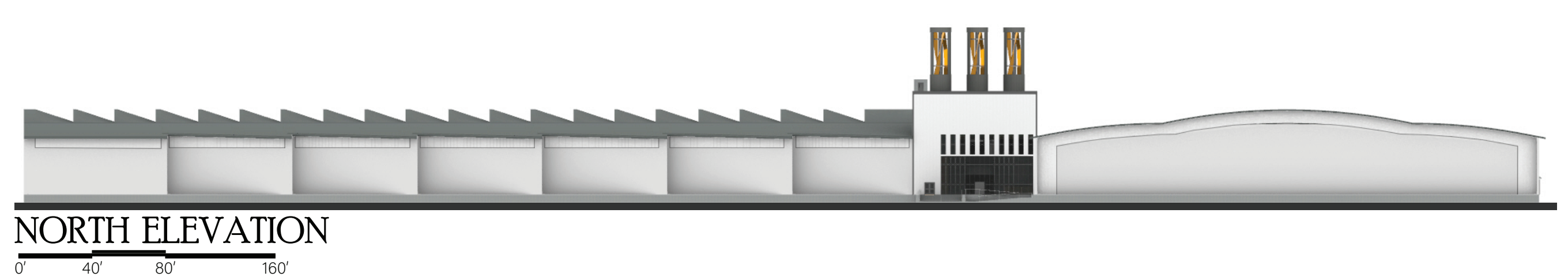



SOLAR HARBOR

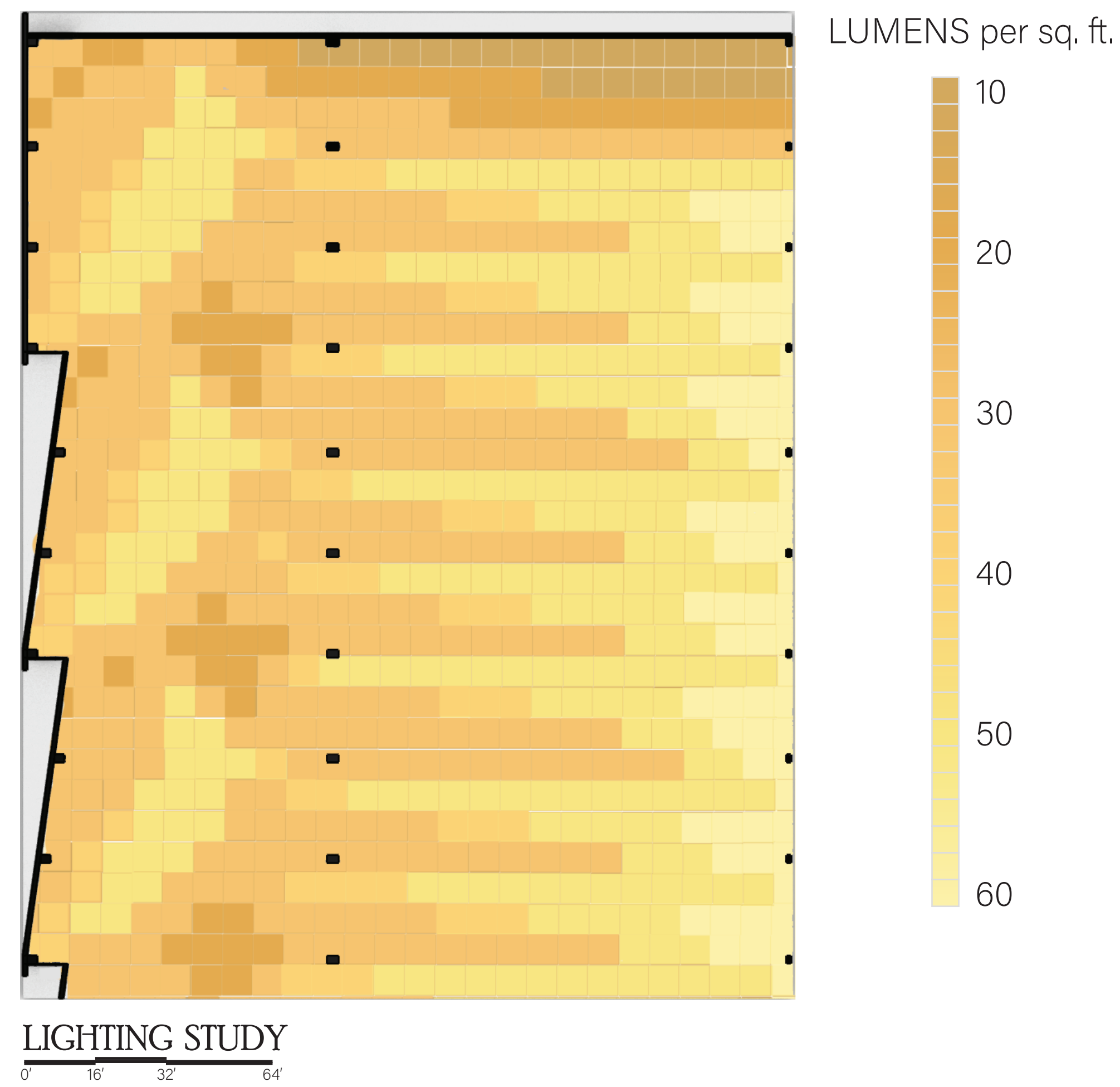
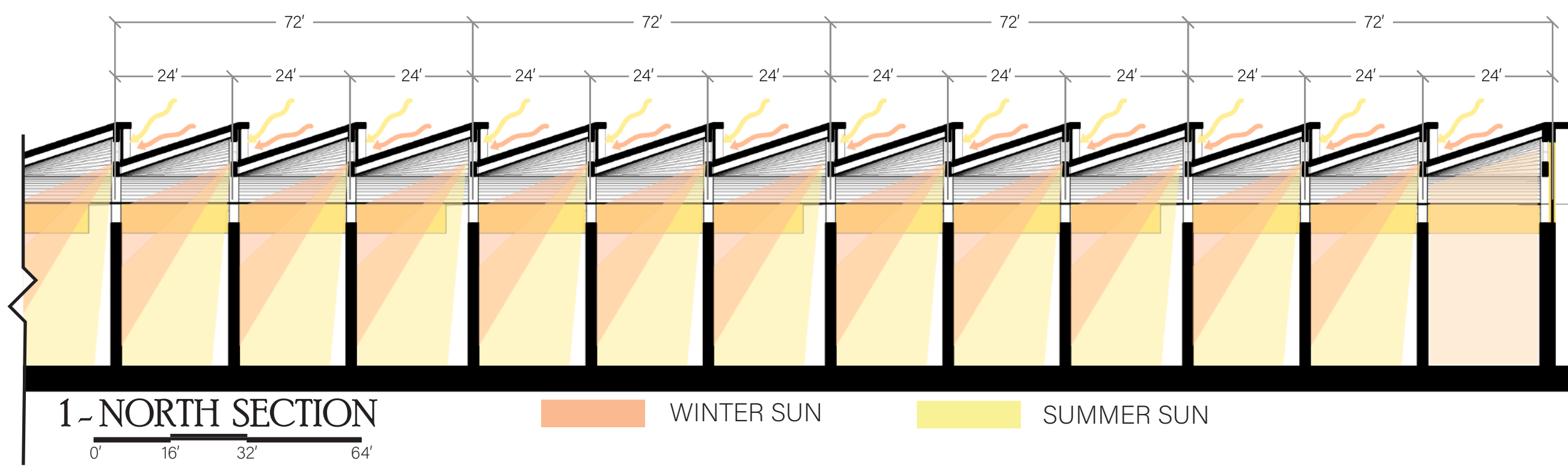
NURTURING NATURE IN INDUSTRIAL DESIGN

Solar Harbor is a 420,000 square foot warehouse where tradition meets transformation. Nestled amidst the plains of North Dakota, this facility redefines the industrial landscape by prioritizing the well-being of its workforce and the health of the planet. Shifting the focus of the industry from efficiency and cost reduction to health is the undeniable way of the future, and this design places itself at the forefront of this revolution.

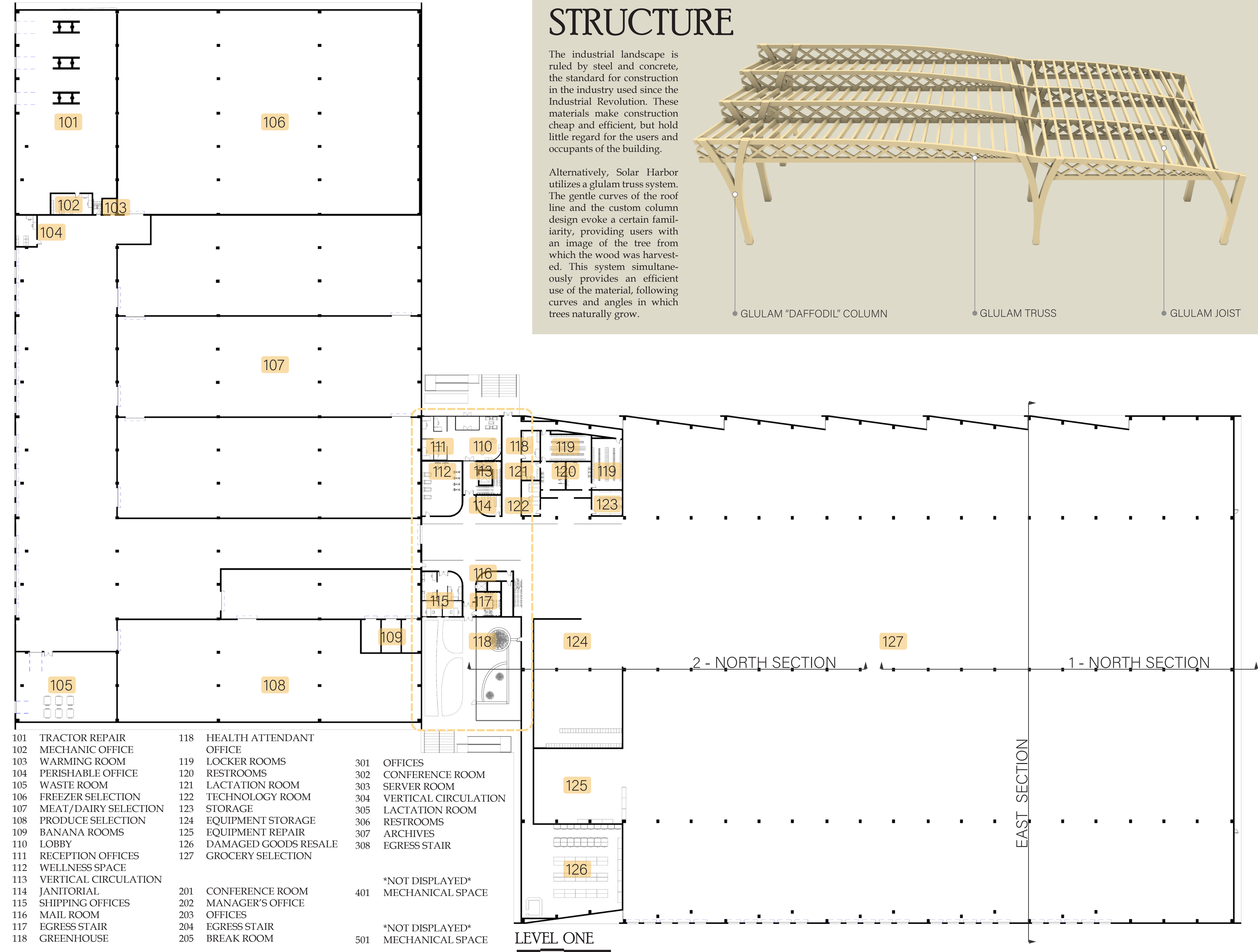
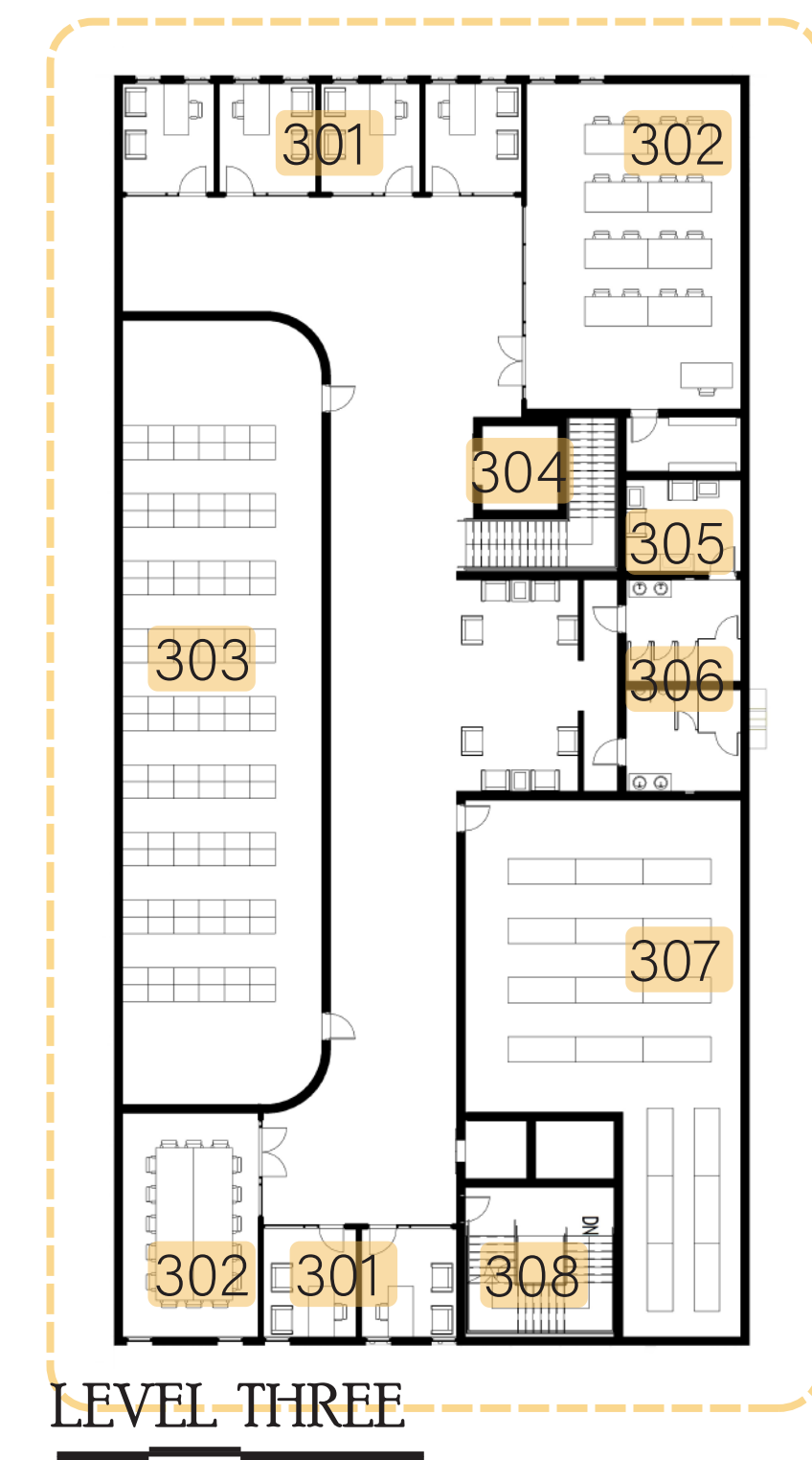
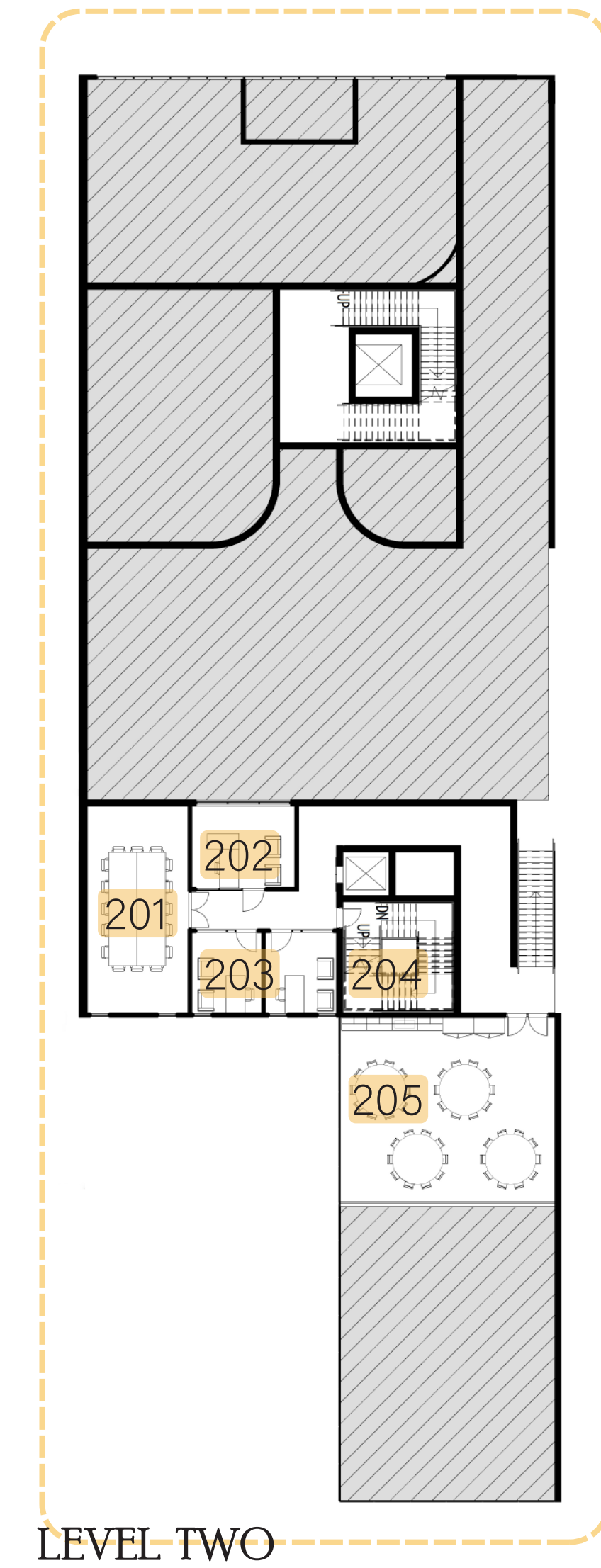
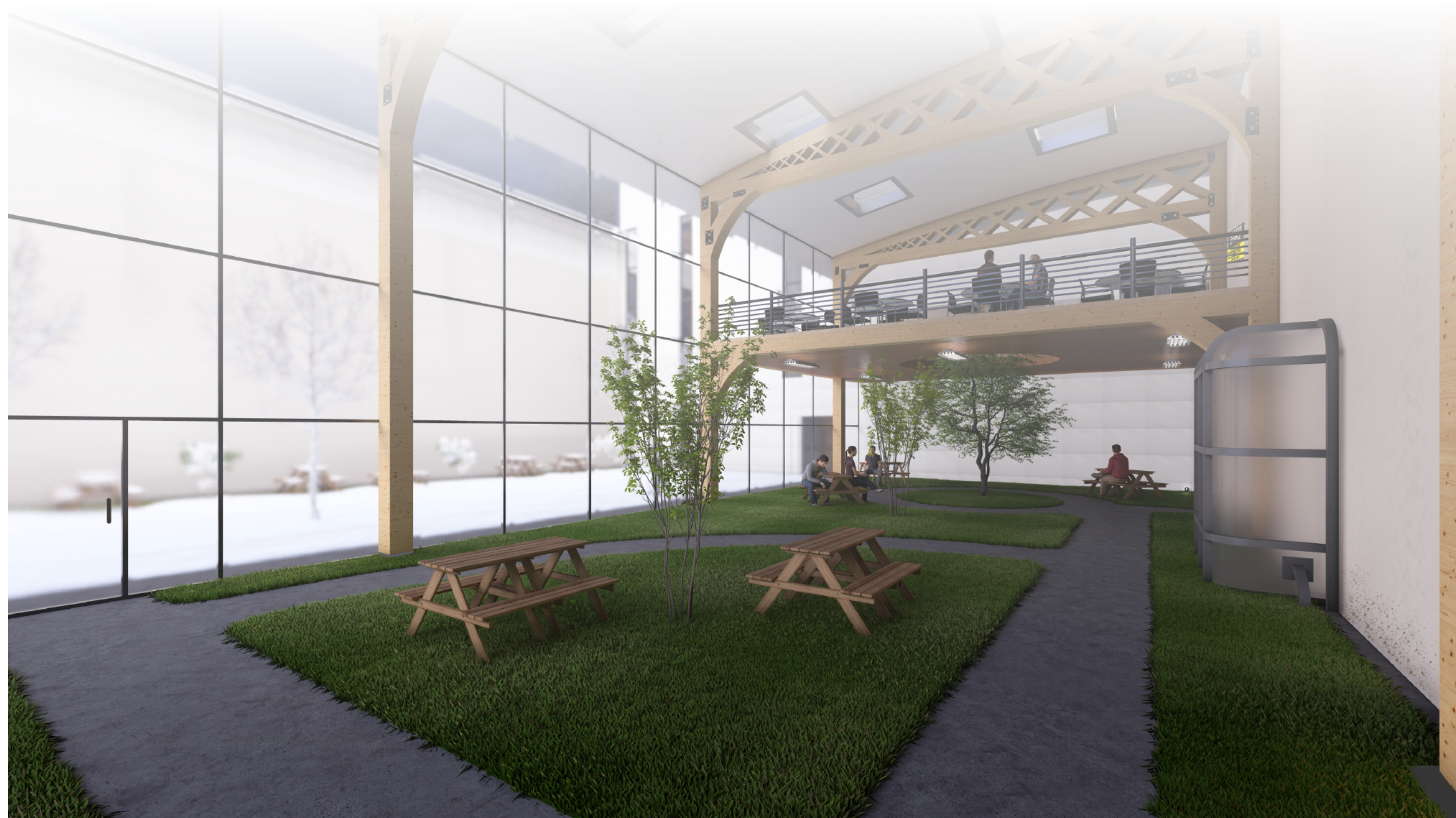




Unlike conventional warehouses, natural light floods every corner, creating an uplifting ambiance that boosts productivity and enhances mood. By harnessing sunlight, this workplace not only illuminates workspaces but also brightens the lives of employees, fostering a more energized environment, increasing mental health, and facilitating workflow.

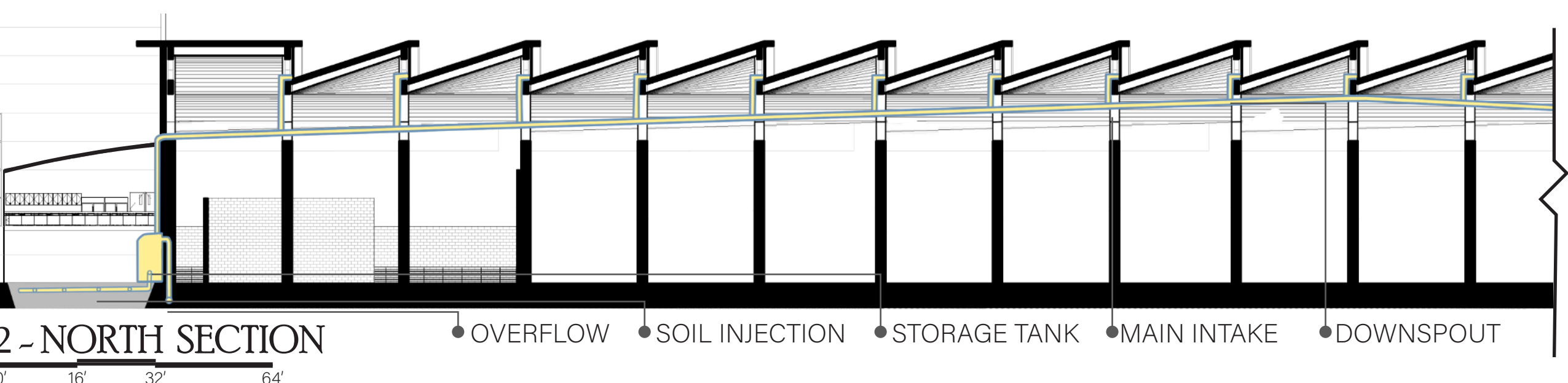
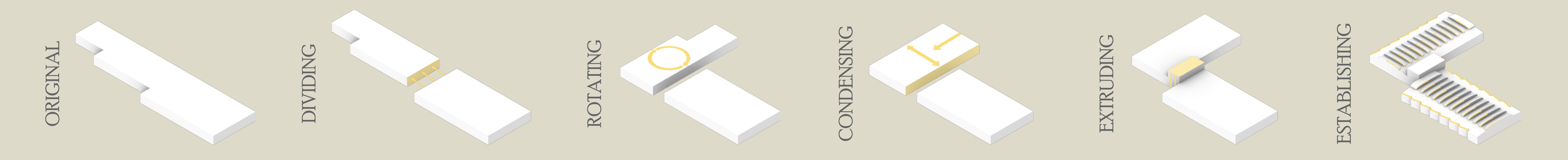


The commitment to well-being extends beyond lighting. On site health assessors, spacious break areas, and wellness amenities promote physical comfort and mental rejuvenation, ensuring that employees and users thrive each day.

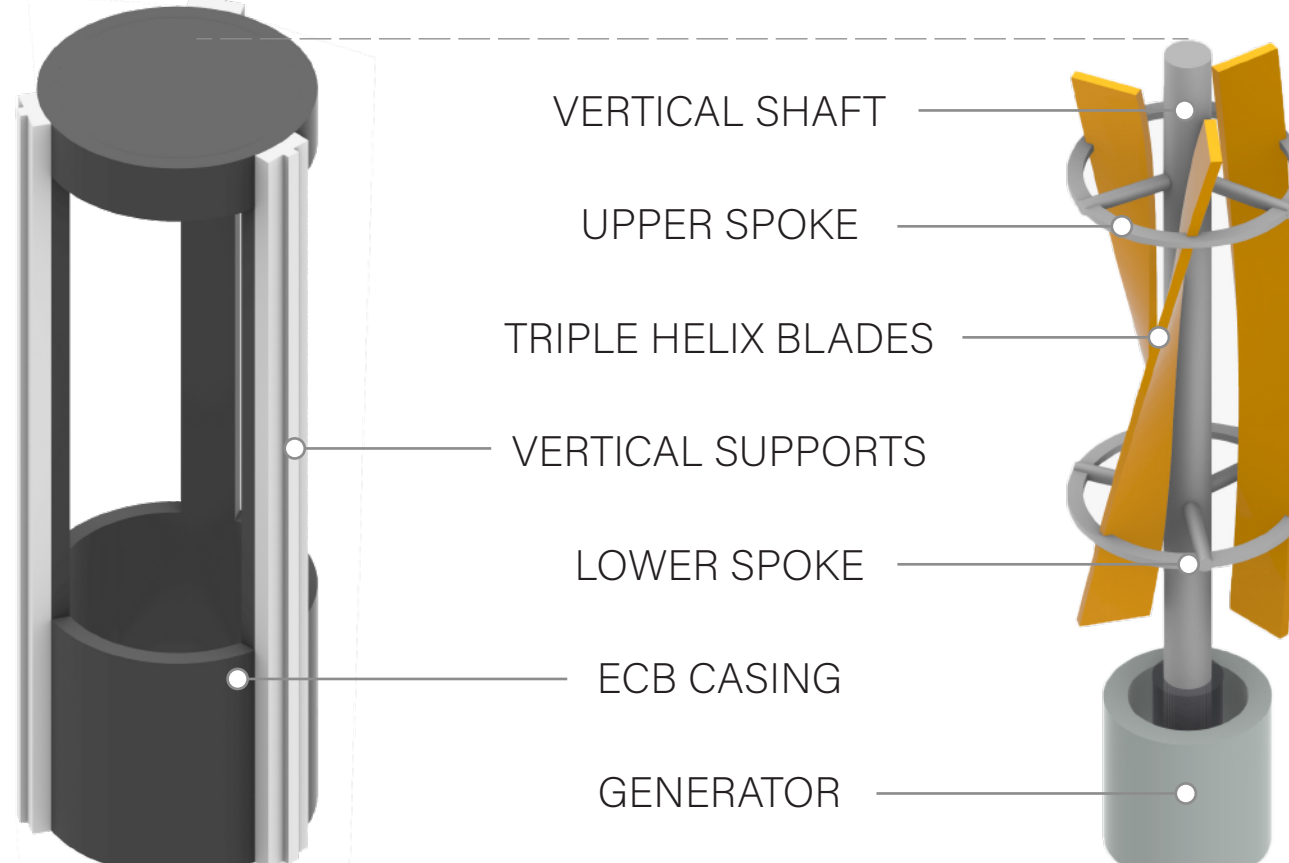


- | | | |
|--------------------------|-----------------------------|--------------------------------------|
| 101 TRACTOR REPAIR | 118 HEALTH ATTENDANT OFFICE | 301 OFFICES |
| 102 MECHANIC OFFICE | 119 LOCKER ROOMS | 302 CONFERENCE ROOM |
| 103 WARMING ROOM | 120 RESTROOMS | 303 SERVER ROOM |
| 104 PERISHABLE OFFICE | 121 LACTATION ROOM | 304 VERTICAL CIRCULATION |
| 105 WASTE ROOM | 122 TECHNOLOGY ROOM | 305 LACTATION ROOM |
| 106 FREEZER SELECTION | 123 STORAGE | 306 RESTROOMS |
| 107 MEAT/DAIRY SELECTION | 124 EQUIPMENT STORAGE | 307 ARCHIVES |
| 108 PRODUCE SELECTION | 125 EQUIPMENT REPAIR | 308 EGRESS STAIR |
| 109 BANANA ROOMS | 126 DAMAGED GOODS RESALE | |
| 110 LOBBY | 127 GROCERY SELECTION | |
| 111 RECEPTION OFFICES | | |
| 112 WELLNESS SPACE | 201 CONFERENCE ROOM | 401 *NOT DISPLAYED* MECHANICAL SPACE |
| 113 VERTICAL CIRCULATION | 202 MANAGER'S OFFICE | |
| 114 JANITORIAL | 203 OFFICES | 501 *NOT DISPLAYED* MECHANICAL SPACE |
| 115 SHIPPING OFFICES | 204 EGRESS STAIR | |
| 116 MAIL ROOM | 205 BREAK ROOM | |
| 117 EGRESS STAIR | | |
| 118 GREENHOUSE | | |

FLOOR PLANS



VERTICAL WIND HARVESTERS

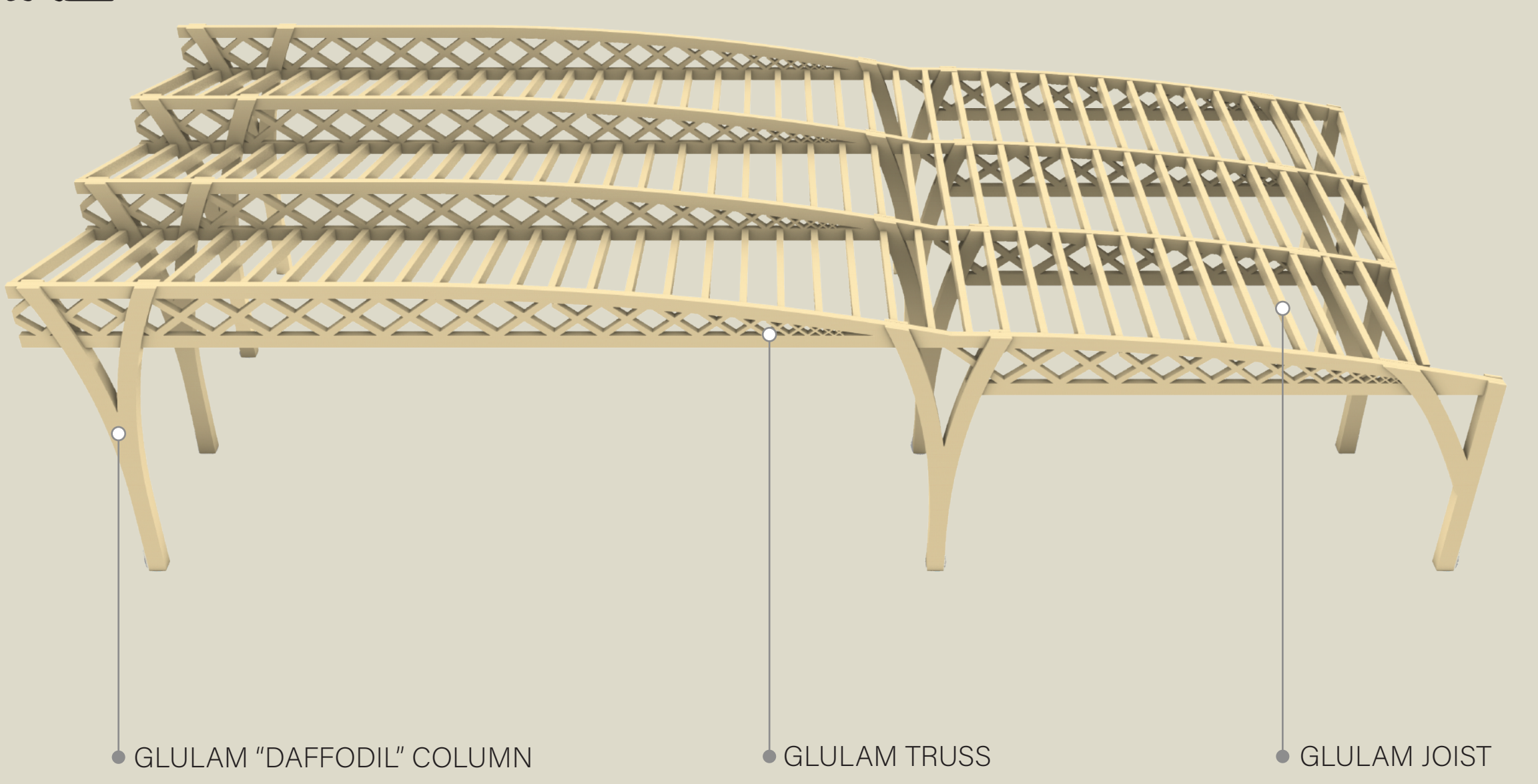


Sustainability is at the core of the design philosophy. Solar panels adorn the grounds, rainwater is collected, and wind is utilized for energy needs. The structure employs curves and forms found in nature to minimize its material usage and consumption. This warehouse is not just reimagining spaces; it's setting a standard for shaping a brighter, greener future for generations to come.

STRUCTURE

The industrial landscape is ruled by steel and concrete, the standard for construction in the industry used since the Industrial Revolution. These materials make construction cheap and efficient, but hold little regard for the users and occupants of the building.

Alternatively, Solar Harbor utilizes a glulam truss system. The gentle curves of the roof line and the custom column design evoke a certain familiarity, providing users with an image of the tree from which the wood was harvested. This system simultaneously provides an efficient use of the material, following curves and angles in which trees naturally grow.



TRANSLUCENT PANELING

