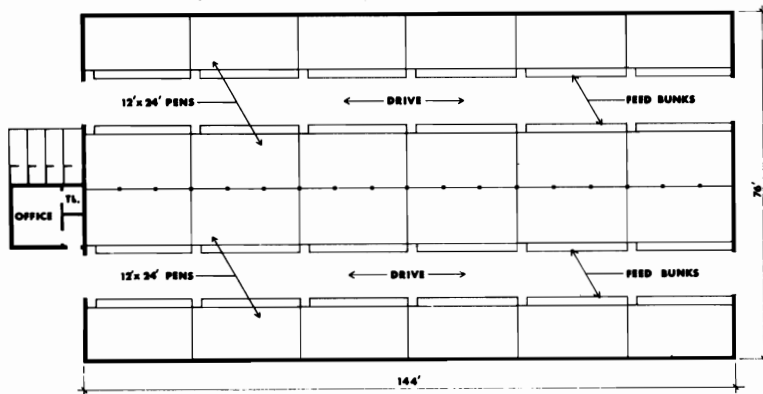
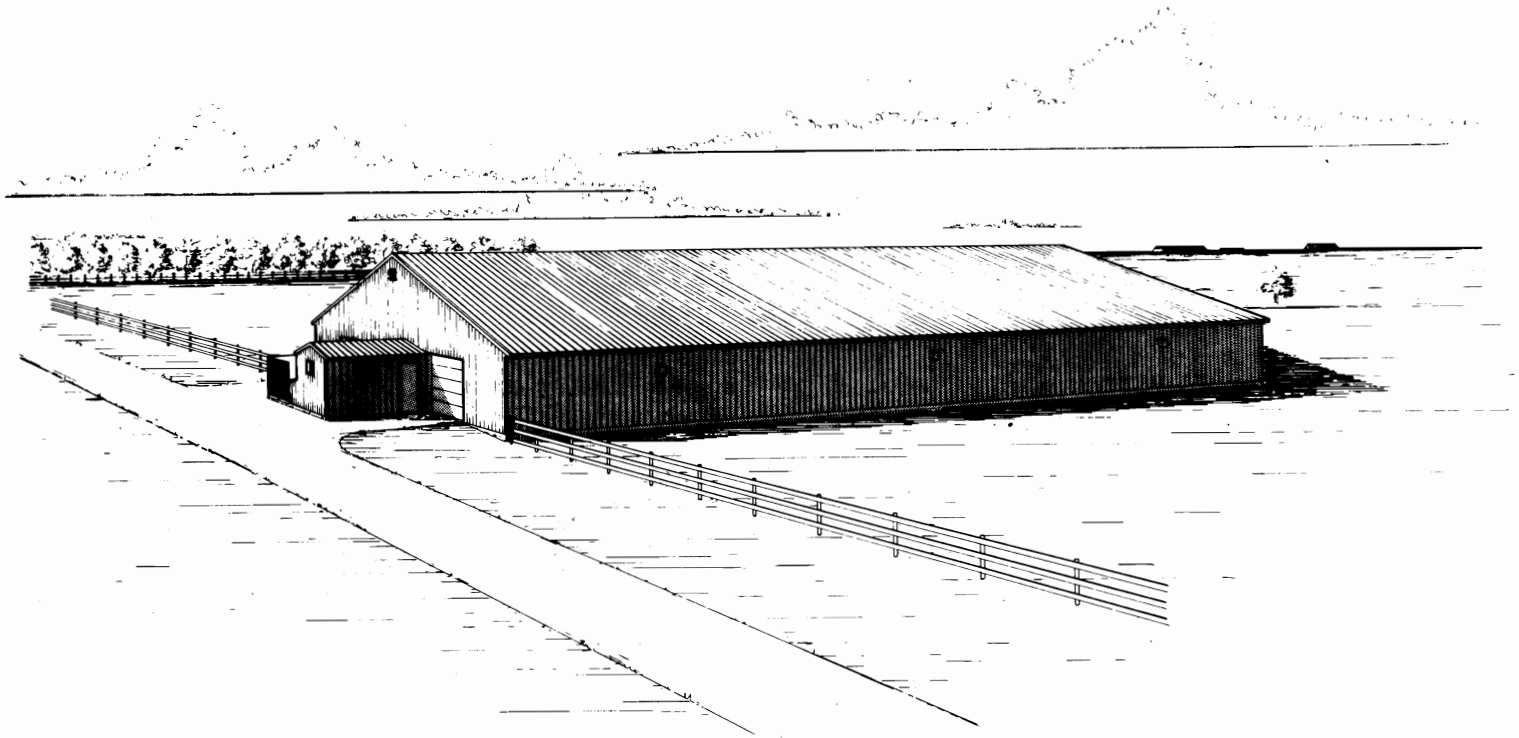


Confinement Sheep Barn at Hettinger Station

by
Richard L. Witz



The Agricultural Engineering Department has recently completed the design for a new experimental confinement sheep barn at the Hettinger Branch Experiment Station. Sheep normally do not require a totally confined type of housing but heavy losses have indicated a need for complete protection from predators.

The Hettinger building will be 76 x 144 feet, has 24 experimental pens and is expected to house up to 480 ewes or 816 lambs. Construction uses a special 76' trussed roof which is clear span except for the support at the center. The details for the truss construction were provided by the Civil Engineering Department.

The building is steel clad both inside and out. Ventilated attic space helps to control moisture from accumulating in the roof and wall insulation. Ventilation is expected to be a problem because moisture production of sheep is rather high.