

Anthrax

Charles L. Stoltenow, DVM, DACVPM
Extension Veterinarian

Carrie J. Hammer, DVM, PhD
Equine Specialist

Anthrax occurs worldwide and is associated with sudden death of cattle and sheep. Anthrax can infect all warm-blooded animals, including humans.

The anthrax organism (*Bacillus anthracis*) has the ability to form spores and become resistant to adverse conditions. Pasteurization or ordinary disinfectants may destroy anthrax organisms in animals or their secretions. However, if the animal carcass is opened and the organisms are exposed to air, they will form spores. Sporulated anthrax organisms are highly resistant to heat, cold, chemical disinfectants and drying. The anthrax spore may live indefinitely in the soil of a contaminated pasture or yard.

Herbivores – particularly cattle, bison and sheep – are susceptible to anthrax. Horses, swine and humans are less susceptible than cattle or sheep. Wild ruminants such as deer and elk also may become infected. Dogs, cats, and birds have been infected experimentally.

Sources of Infection

Outbreaks typically occur when livestock are grazing on neutral or slightly alkaline soil. Infection in animals usually is the result of grazing on infected pasture land. The organisms mainly enter through the mouth, and occasionally enter via nose or skin injury. Following ingestion or inhalation, the organisms spread rapidly throughout the entire body.

Dead animals that are opened and not burned or buried provide an ideal source of the organism. **Cremating diseased carcasses (burning them to ashes) is imperative.** If cremation is not possible, the carcasses should be buried deep and covered with quicklime before covering them with soil. Quicklime is calcium oxide (CaO) and people should use it with extreme care as it can cause severe burns. Quicklime will react quickly with water and form calcium hydroxide ($\text{CaO} + \text{H}_2\text{O} \rightarrow \text{Ca}(\text{OH})_2$). Quicklime pulls water from plants, bacteria, fungi and any other living organism.

Flooding pastures with contaminated water or dumping infected carcasses in streams or ponds also may spread anthrax spores. Flooding readily contaminates low-lying ground or marshy areas, and resultant stagnant water holes may serve as a source of infection. Hay infested with spores may account for outbreaks of anthrax during the winter months. However, anthrax predominantly is a warm-weather

disease and rarely is diagnosed in North Dakota during the winter.

The safest use of soil infected with the anthrax organism is to raise cultivated crops.

Anthrax also may be spread through wounds that blood-sucking insects, dehorning or castration causes. Outbreaks have occurred because of contaminated feed, particularly through bone meal, meat scraps and other animal protein products. Present regulations pertaining to the manufacture and importation of such animal products virtually eliminate these as a source of infection.

Humans may become infected by handling contaminated hides or wool, or by examining infected carcasses.

Symptoms

Symptoms associated with anthrax depend to a certain degree on the species involved and the route of infection. When the anthrax organism enters the animal's body through the mouth or nostrils, the symptoms occur soon after infection (acute form) and death follows rapidly. When infection takes place through the skin because of injury or insect bites, it appears localized at the site of injury in the initial stage.

The affected area initially is hot and swollen and becomes cold and insensitive. Later, the infection can become generalized.

43
7
8
NDSU
Extension Service

North Dakota State University
Fargo, North Dakota 58105

MARCH 2006

Anthrax usually is a fatal disease with no symptoms observed. Upon or near death, blood oozes from the body openings. This blood is heavily laden with anthrax organisms. The carcass has a marked bloating and decomposes rapidly.

If the infection is less acute, the animal may stagger, have difficulty breathing, tremble, collapse and die. In horses, colic may be observed. Edema and swelling may be seen over the body, particularly at the brisket. Illness is observed for one or two days, but it may last five days; symptoms are preceded by fever, with a period of excitement in which the animal may charge anyone nearby. This is followed by depression in cattle or sheep.

Sometimes the anthrax organism localizes itself in the throat area. The tongue, throat and neck are extremely swollen and a frothy blood-tinged discharge comes from the mouth. Though this is the typical form of anthrax observed in swine, it also may occur in cattle and sheep.

Diagnosis of Anthrax

Not all cases of "sudden death" are anthrax, but if livestock owners suspect anthrax, they need to have a confirmatory laboratory examination.

If anthrax is suspected, do not perform a necropsy. Using aseptic technique, have a veterinarian collect a jugular sample of venous blood and send or deliver it to the diagnostic laboratory in a sealed, sturdy, leak-proof, iced container with an accompanying history identifying it as an anthrax suspect. The veterinary diagnostic laboratory at North Dakota State University has anthrax specimen collection kits available for veterinarians to submit samples safely.

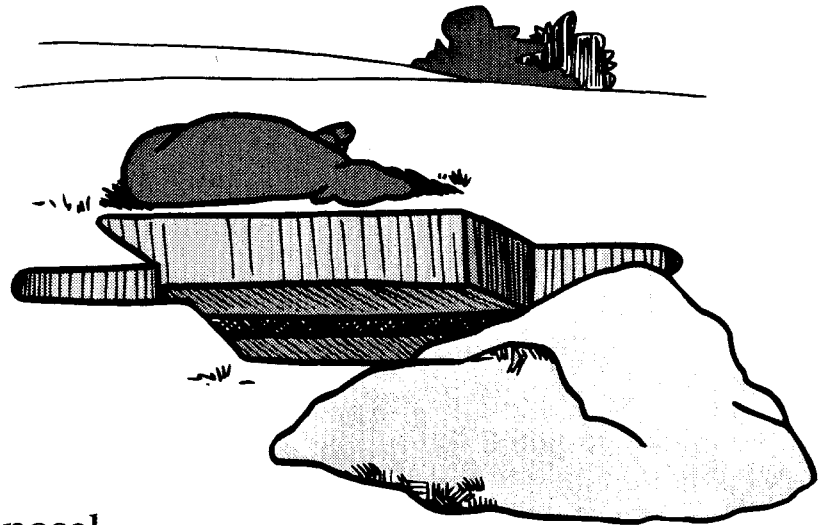
Isolation of the anthrax organism becomes very difficult if the animal has been dead for 48 hours or more. Saprophytic bacteria may overgrow *Bacillus anthracis*. Therefore, having a negative diagnosis from an animal that has died from anthrax is possible.

Treatment and Control

Anthrax is highly fatal and treating affected animals is difficult. Penicillin is the antibiotic of choice. Response to treatment may vary; best results are obtained when drugs are administered early during an outbreak. If using antibiotics, vaccination with an anthrax vaccine should be delayed for two to five days depending on antibiotic used. The vaccine is a spore vaccine and antibiotics may interfere with proper immunization of the animal. However, when faced with an outbreak situation, administering an antibiotic and a vaccine concurrently has been effective. Consult your local veterinarian for a recommendation.

An effective vaccine is available (nonencapsulated, Sterne 34F2 strain). Since anthrax is a reportable disease, details on the use of the vaccine should be coordinated through the office of the state veterinarian. It is relatively safe and provides effective protection on most species of livestock. Use caution when administering it to horses. Cases of *Clostridial* infections have been reported in horses at the injection site where the horses were vaccinated during a rainfall, or when the horses had wet hair coats.

If using the anthrax vaccine, follow all label directions for proper withdrawal times, including withholding of milk and meat products from the market.



Disposal

The carcass and all materials associated with the carcass should be destroyed and the ground should be disinfected. This can be very difficult. **The preferred method of destruction would be incinerating the carcass.** If incineration or cremation is not possible, burying the carcass deep (at least 6 feet) and covering it with quicklime still is acceptable.

The following are general recommendations for burning a 1,000-pound carcass: Dig a pit about 2 feet deep and exceeding the length and breadth of the carcass by about 1 foot on each side (Figure A). Dig a trench 1 foot by 1 foot along the length of the center of the pit extending beyond the ends of the pit by about

3 feet; this serves as an air duct for the fire under the carcass (Figure B). Fill the trench and cover the bottom of the pit with straw and soak them with an accelerant (kerosene or diesel fuel) (Figure C).

Cut heavy timbers such as railroad ties or pallets to fit across the trench and within the sides of the pit and place them on top of the straw. Add other pieces of wood (or coal) until the pit is filled to the level of the ground surface. Depending on the location of the carcasses and the environmental rules in place and only in extenuating circumstances, tires have been used in addition to or in place of wood (or coal). Saturate all of this with accelerant.

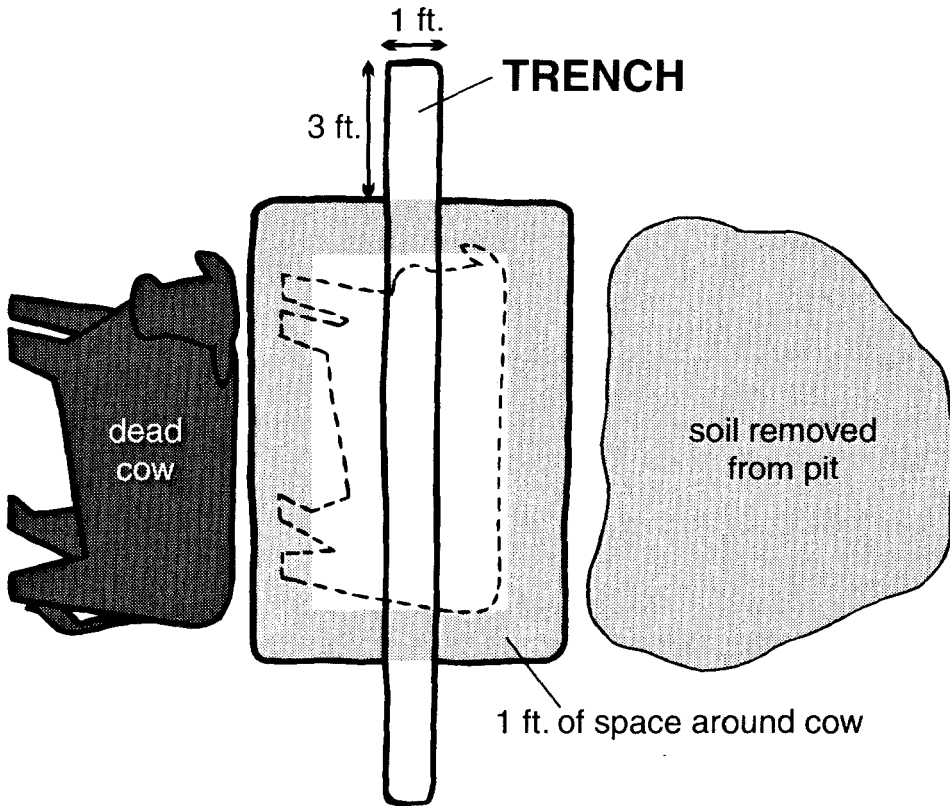


Figure A. Top view.

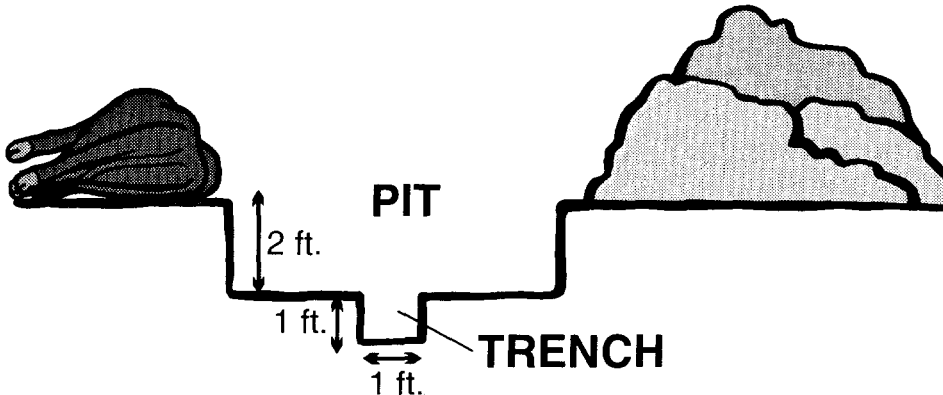


Figure B. Cross section.

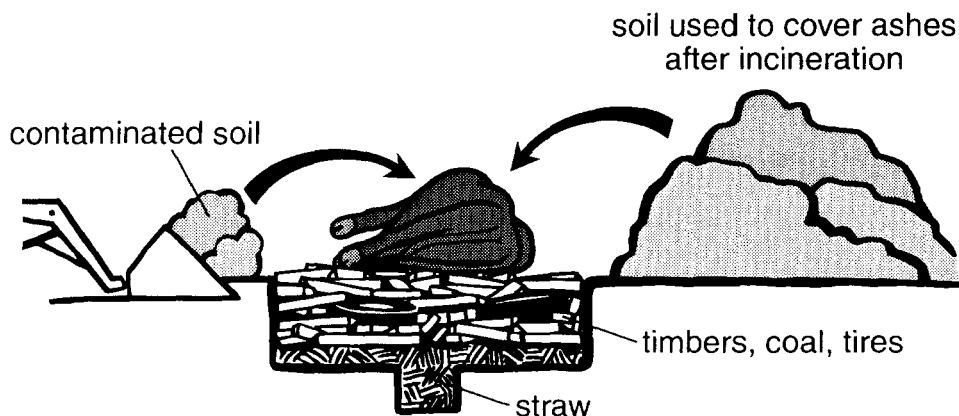


Figure C. Cross section of pit ready for burning.

The carcass then can be lifted or drawn onto the pyre (combustible heap). Pour further accelerant over the carcass. Ignite the fire at either end of the trench. Once the incineration is well under way (probably after the first hour), cover the pyre with corrugated metal or other metal sheeting to retain heat but not lose ventilation.

If blood and body fluids have contaminated the ground and material under the animal, they should be incinerated as well. Remove soil deep enough to collect any blood and body fluids that have seeped into it. This could be up to 6 inches. This material can be placed on top of the carcass prior to igniting the pyre (Figure C).

The approximate quantities of fuel that will be needed are 100 pounds of straw, 2½ gallons of accelerant and 2 tons of wood or ½ ton of wood and ½ ton of coal. Anecdotal evidence would indicate that at least 18 automobile tires are needed for good incineration.

If soil and other related materials cannot be incinerated, it can be disinfected with 5 percent formaldehyde solution at 50 quarts per square yard.

After incineration, cover ashes and contaminated soil with soil removed from pit.

Personnel Protection

If producers suspect anthrax, have a veterinarian aseptically collect a jugular blood sample for culture. **DO NOT NECROPSY THE ANIMAL.**

Producers should take every precaution to avoid skin contact with the potentially contaminated carcass and soil. They should use protective, impermeable clothing and equipment such as rubber gloves, rubber apron and rubber boots with no perforations. Do not expose any skin, especially that compromised with wounds or scratches. Disposable personal protective equipment is preferable,

but if not available, wash any exposed equipment in hot water and detergent to achieve decontamination. Burn and bury disposable personal protective equipment with the carcass.

To clean equipment used for digging the pit and moving the carcass, remove dirt, blood, hair and other materials with water (preferably hot) and detergent. Divert the wash water from the equipment into the pit for incineration. A diluted bleach solution (one part bleach to 10 parts water) can be sprayed on the clean equipment to further decrease the likelihood of anthrax being present. Allow this solution to remain on the equipment for three minutes. The risk of anthrax being spread via equipment used to dig the pit is unknown, but most likely is very small. The site where the animal died is not necessarily where the animal acquired the infection.

The *Bacillus anthracis* organisms range from 0.5 to 5 micrometers in size. Veterinarians and producers working with anthrax suspects or confirmed cases should wear respiratory equipment capable of filtering this size of particle. They should use a National Institute for Occupational Safety and Health (NIOSH) and Mine Safety and Health Administration (MSHA)-approved high-efficiency respirator, such as a half-face disposable respirator with a high-efficiency particulate air (HEPA) filter, when conducting soil remediation and burial and applying quicklime to soil.

Human Implications

Anthrax is a zoonotic disease (disease that can affect both humans and animals). Anthrax in humans can take three forms: cutaneous, respiratory and intestinal.

The cutaneous or skin form occurs when anthrax spores invade a cut or abrasion. Initially, the site will itch, followed by swelling and discoloration of the affected area. Pain usually is not present. If left untreated, cutaneous anthrax eventually can become septicemic and lead to death. Antibiotic therapy is very effective for the cutaneous form of anthrax.

The respiratory form of anthrax occurs when the spores are inhaled and then infect the lung tissue. Initial symptoms are mild and may resemble the flu or common cold. The disease will progress at a rapid rate with shock developing within three to five days, followed shortly by death. Once shock has developed, any therapy provides limited success.

The intestinal form of anthrax occurs when spores are ingested, primarily through consuming contaminated meat. It is a very rare condition and almost always involves an explosive foodborne outbreak where many individuals are involved. These cases usually are reported from underdeveloped countries where people sometimes salvage dead animal carcasses for human food. Symptoms include fever, abdominal distress, shock and death.

Regulation Pertaining to the Control of Anthrax

NDCC § 36-14-19.

Disposition of carcass of animal dying from contagious or infectious disease.

Any animal which is found dead must be presumed to have died from a contagious or infectious disease until the contrary is shown unless another cause of death is apparent. The owner or person in charge of any domestic animal or nontraditional livestock which dies within this state from or on account of any contagious or infectious disease shall dispose of the carcass of such animal as follows:

1. If the animal died of anthrax, as determined by a licensed veterinarian, the carcass must be completely burned at the place where it died if possible. If the carcass must be moved, it may not be dragged over the ground but must be moved only on a suitable conveyor and all body openings in the carcass must be plugged with cotton saturated with a strong antiseptic solution.

NDCC § 48-04-01-08.

Control of Anthrax.

All livestock on farms where anthrax has been diagnosed shall be vaccinated. All animals shall be quarantined for thirty days after the death of the last animal or thirty days following vaccination. Sale of hides removed from animals infected with anthrax is prohibited.

This publication may be copied for noncommercial, educational purposes in its entirety with no changes.

Requests to use any portion of the document (including text, graphics or photos) should be sent to permission@ndsuxent.nodak.edu.

Include exactly what is requested for use and how it will be used.

For more information on this and other topics, see: www.ag.ndsu.edu

