

Doc.
Y 3.

missouri river basin commission • annual report 1975

M69/2:
1/975



NORTH DAKOTA
STATE UNIVERSITY
NOV 15 1976
LIBRARY



Missouri River Basin



Missouri River Basin Commission
Suite 403, 10050 Regency Circle, Omaha, Nebraska 68114

THE CHAIRMAN'S LETTER

To the Governors of Colorado, Iowa, Kansas, Minnesota, Missouri, Montana, Nebraska, North Dakota, South Dakota and Wyoming and to the U.S. Water Resources Council for transmittal to the Congress through the President of the United States:

It is my pleasure to submit the 1975 fiscal year annual report of the Missouri River Basin Commission for transmittal through the President to the Congress of the United States in accordance with Title II, Section 204(2), of the Water Resources Planning Act of 1965.

This fourth annual report of the commission reflects the progress that has been made in achieving coordination and cooperation in water and related land resources planning among states and federal agencies and local interests in the Missouri River Basin.

Successful coordination of water and related land planning is directly dependent upon the willingness of all agencies at all levels of government, as well as private interests, to commit themselves to public objectives and goals beyond their own institutional interests.

The ability of the commission to make major strides toward increased state and federal agency cooperation in water and related land planning programs and activities has in a very large part been the result of the support received from the ten basin state's governors and congressional delegations.


We look forward to the opportunity of continuing to provide you with the essential information base through federal and state program reviews, recommendations of water resources use alternatives and recommended priorities for special studies, planning research, basic data collection, implementation

studies, regional planning programs and implementation projects.

These commission programs are directed to assist you as decision-makers in making the difficult choices that will ensure the future wise use of water and related land resources.

Your continued interest and expressed desires to bring about prudent utilization, management and conservation of our basin's natural resources through joint state-federal planning and coordination efforts are essential to our progress.

Sincerely,



John W. Neuberger
Chairman

MISSOURI RIVER BASIN COMMISSION

State Members and Alternates

Colorado.....Fred E. Daubert
Felix L. Sparks
 Iowa.....William C. Brabham
Fred A. Priewert
 Kansas.....Keith S. Krause
John M. Dewey
 Minnesota.....Archie D. Chelseth
Donald R. Rye
Andy Kozak
Joseph Sizer
 Missouri.....James L. Wilson
Robert L. Dunkeson
 Montana.....John E. Acord
William Throm
 Nebraska.....Thomas K. Eason
Dayle Williamson
 North Dakota.....Vernon Fahy
Gordon Gray
 South Dakota.....Vern W. Butler
Keith Harner
 Wyoming.....George L. Christopoulos
Joseph C. Lord

Federal Members and Alternates

Department of Agriculture.....Wilson J. Parker
William B. Patterson
 Department of the Army.....Col. Harry F. Mumma
Gus J. Karabatsos
Col. C. H. Charles
 Department of Commerce.....Elroy C. Balke
Herman Mondschein
 Department of Health, Education & Welfare.....Max M. Mills
John P. Bailey
 Department of Housing & Urban Development.....Elmer E. Smith
Charles B. Huyett
Myron G. Eckberg
 Department of the Interior.....William L. Rogers
Paul L. Harley
Harold M. Boeker
 Department of Transportation.....Cmdr. Ralph W. H. Bartels
Raymond H. Hogrefe
 Energy Research & Development
 Administration.....Walter G. Belter
Randolph Newton
 Environmental Protection Agency.....Jerome H. Svore
John A. Green
Carl Clopeck
 Federal Power Commission.....Lenard B. Young
Orel Haukedahl

Interstate Compacts

Yellowstone River Compact Commission.....Orrin Ferris
 Big Blue River Compact Administration.....Guy E. Gibson
Marion Ball

Canadian Observer

Environment Canada.....E. F. Durrant



John W. Neuberger
 Chairman



Keith S. Krause
 Vice-Chairman

GOVERNORS '75



Montana
Gov. Thomas Judge



Wyoming
Gov. Ed Herschler



Minnesota
Gov. Wendell R. Anderson



Missouri
Gov. Christopher S. Bond



Nebraska
Gov. J. James Exon



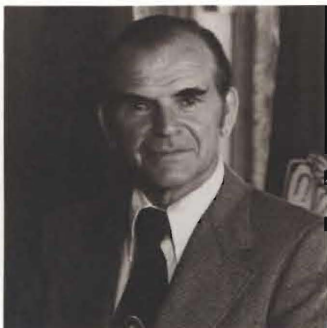
Kansas
Gov. Robert F. Bennett



South Dakota
Gov. Richard F. Kneip



Colorado
Gov. Richard D. Lamm



North Dakota
Gov. Arthur A. Link



Iowa
Gov. Robert D. Ray

The windmill on the cover of this year's annual report is a reminder of the importance of water to the westward expansion of this great nation. Perhaps nothing had greater influence on early settlers and their descendents over time than the abundance or the lack of water.

Since early attempts to harness the wind to pump water for life's basic needs, residents of the Missouri River Basin have taken great strides in the development of water resources for irrigation, power generation and other beneficial purposes.

With the increased demand for water has come the realization that the potential for future development is limited by the availability of that precious resource. The result has been an emphasis on planning to meet future needs.

MISSOURI RIVER BASIN COMMISSION

The Missouri River Basin Commission (MRBC) was established by the President in 1972 to serve as the principal agency for the coordination of federal, state, interstate, local and nongovernmental plans for the development of water and related land resources in the vast Missouri River Basin.

The responsibilities of river basin commissions were set forth in the Water Resources Planning Act of 1965 and include preparing and maintaining a comprehensive, coor-

minated joint plan (CCJP) for water and related land resources in the basin and recommending schedules of priorities. Commissions also may foster and undertake studies of water and related land resources problems in the basin as are necessary in the preparation of the CCJP.

Besides the states of the Missouri River Basin, members of the Missouri River Basin Commission include ten federal agencies which were determined by the President to have a substantial interest in the work to be undertaken in the basin. Two interstate agencies created by interstate compacts to which the consent of Congress had been given and whose jurisdiction extended to tributaries of the Missouri River also are members.

The final member of the Missouri River Basin Commission is the chairman, appointed by the President to serve as chairman and coordinating officer of the federal members of the commission and to represent the federal government in federal-state relations on the commission.

A vice-chairman is elected by state members to serve also as chairman and coordinating officer of the state members of the commission and to represent state governments in federal-state relations on the commission.

The commission employs an independent staff, members of which are appointed by the chairman with the concurrence of the vice-chairman.

In the work of the commission every reasonable endeavor is made to arrive at a consensus of all members on substantive issues.

COORDINATION

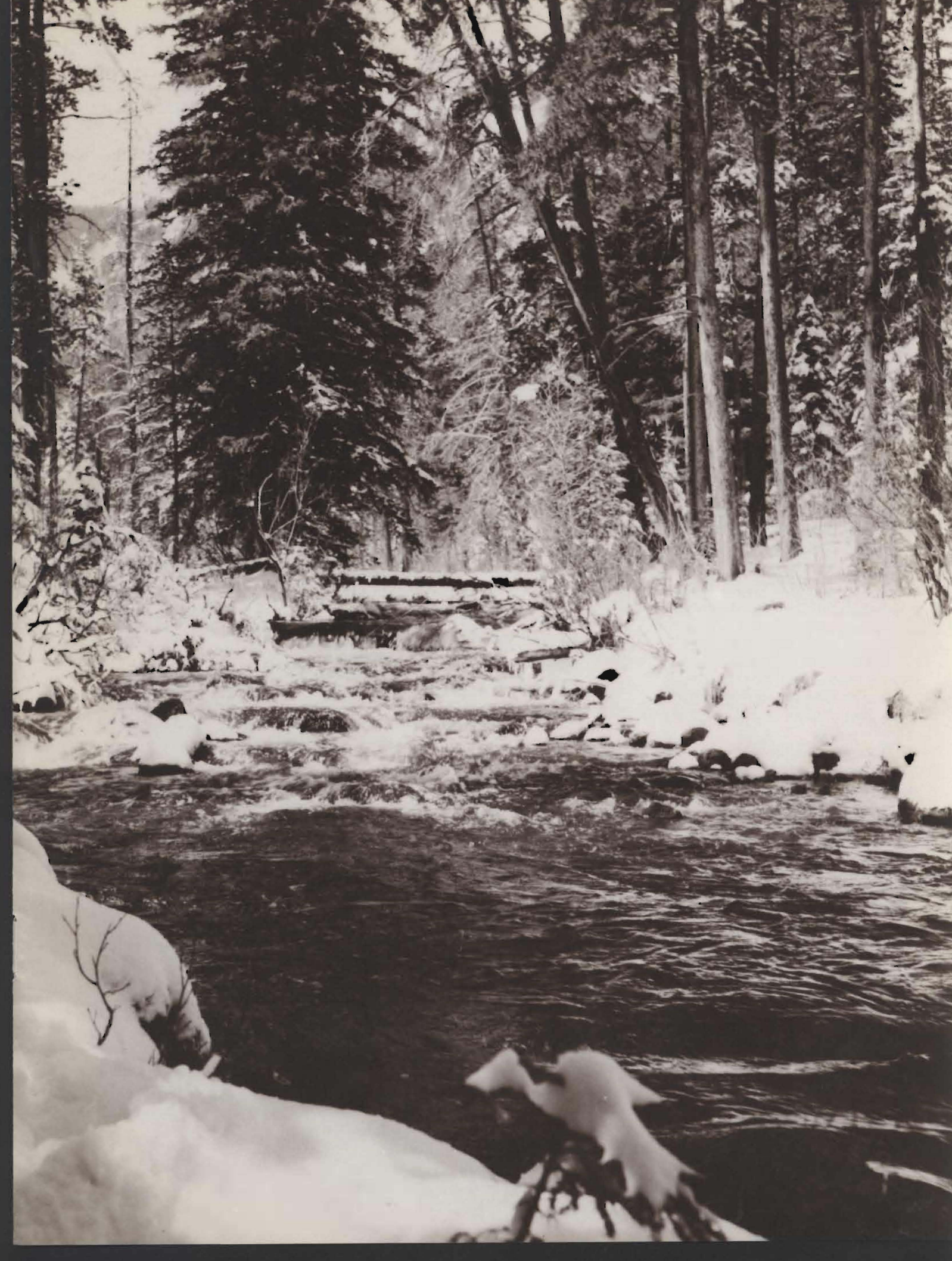
River basin commissions have the challenging task of coordinating water resources planning to incorporate the collective water interests and needs of ten basin states and the federal government. MRBC views joint participation as the best means of achieving this goal.

Primary tools of joint participation used by MRBC in FY 75 were priority listings, state and federal program reviews and the commission's regular quarterly meetings.

Priorities

The Water Resources Planning Act (P.L. 89-80) requires that river basin commissions "recommend a long-range schedule of priorities..." This mandate, together with a policy for implementation of such a program, is incorporated in the MRBC bylaws.

The commission with the assistance of its Priorities Committee has developed guidelines and an objective evaluation process for determining priorities. A report published in FY 75 was titled "Second Annual Report, Basin Priority Listings of Proposed Water and Related Land Resources Activities."



The first part of the priorities report contained MRBC's recommendations for basinwide priority ranking of proposals submitted by the states in these six categories of water and related land resources activities: 1) basic data collection, 2) planning related research, 3) special studies, 4) regional or river basin planning, 5) implementation studies, and 6) implementation programs or projects.

These relative rankings were determined by the Priorities Committee using four criteria: 1) geographic impact of the proposal; 2) the level of support for the proposal; 3) need for the proposal; and 4) feasibility tests, to some extent.

The second part of the report contained the original state proposals for their respective priority water and related land resources activities.

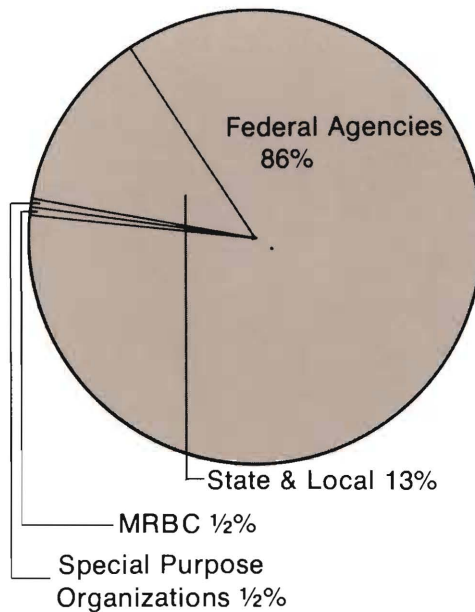
The FY 75 priorities report was sent to the governors of the ten states in the Missouri River Basin and to the U.S. Water Resources Council for transmittal to the Congress through the President.

Program Reviews

The MRBC staff combined the state and federal program review for the first time in FY 75. Previously the reviews had been conducted separately. Purpose of the combined program review is to better enable basin states and federal agencies to coordinate water resource planning activities.

The report documented more than 800 state and federal water and related resources planning, development and management activities both present and planned. The report showed a total amount budgeted for those activities in FY 76, including the transition period of July-September, of \$280 million. Field estimates for FY 77 project a need for more than \$383 million.

This pie graph shows by percentage the total 1975 government investment in water resources planning and construction in the Missouri River Basin.



Meetings

Quarterly meetings in FY 75 were held in Sioux Falls, South Dakota, and Kansas City, Missouri, in addition to the two regularly scheduled each year in Omaha, Nebraska. Purpose of meeting away from the headquarters city twice a year is to foster communication between MRBC and residents of the individual states.

Meeting agendas established by the MRBC members assist in coordination by assuring thorough discussion of timely issues. The consensus required for commission decision making is achieved on substantive issues only after considerable preparation and deliberation at home and in caucus as well as during the meeting itself.

CCJP

The comprehensive, coordinated joint plan (CCJP) is the recommended plan adopted by MRBC, which serves currently as a basis or guide for the management and development of water and related land resources in the Missouri River Basin.

The CCJP provides recommendations on water and related land resources that incorporate the results of federal, state, interstate, local and nongovernmental planning. The CCJP is developed

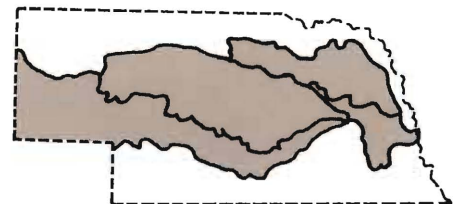
through a continuous and dynamic procedure and is evolved in stages.

MRBC had three major activities underway in fiscal year 1975 directly related to producing a CCJP for the Missouri River Basin. Those activities were the Platte River Basin Level B Study in Nebraska, an update of the 1969 Missouri River Basin Framework Study and the regional portion of the National Assessment.

Platte Level B

The field draft report on the Platte River Basin Level B Study was published in FY 75, essentially completing the study that was initiated August 1, 1972.

The report contained a plan for future water management in the Platte River Basin of Nebraska, focusing on the period 10 to 25 years in the future. The plan contained more than 100 structural and nonstructural elements requiring many different actions by various state, federal, and local governments and organizations. Construction cost of the structural elements and the capitalized cost of the nonstructural elements for which cost estimates could be completed will total approximately \$530 million based on 1974 costs.



Platte Level B Study Area

The report contained 33 recommendations for action necessary to begin and follow through on implementation of the plan as presented. Implementation of the recommendations will require action by local, state and federal agencies and by the elected bodies of the state and federal governments.

Special effort was made during the study to provide opportunity for public input and to utilize public participation in our planning process. Four subbasin citizens' advisory committees made up of nearly 100 residents of the Platte River Basin provided advice and counsel to study participants during the entire course of the study.



In addition to many meetings held with the citizens' advisory committees, a series of public meetings was held across the basin at three different times. The first was a series of seven meetings held at the beginning of the study to provide opportunity for citizen input in identifying study objectives, scope, and goals. Approximately 250 people attended.

The second series of meetings followed development of alternative plans for national economic development and environmental quality. Twelve meetings were held and approximately 1,000 people attended and participated.

The third and last series of meetings was after the recommended plan had been developed in July 1975. Six meetings were held and approximately 650 people attended, made comments, and asked questions. Opportunity was also provided for written comments following the last two series of meetings and nearly 200 comments were received in this manner.

In June 1975, 200 copies of the first draft report were prepared and circulated for review and comment by state and federal agencies participating in the study, the States of Colorado and Wyoming and local and private organizations which had displayed interest in the study. Approximately 70 sets of review comments were received on that first draft and were considered in preparation of the field report.

MRBC acknowledged the cooperation of all state and federal agencies involved in the Platte River Basin Level B Study. It commended especially the fine effort and cooperation displayed by members of the study's planning board and planning team. Task force leaders in various agencies also had a great deal of responsibility for preparation of the technical papers. Nebraska state agency representatives provided input and leadership throughout the study.

Framework/Assessment

MRBC, acting through its Framework Updating Committee, finalized plans for and initiated work on a coordinated effort aimed toward updating the 1969 Missouri Basin Comprehensive Framework Study (published in 1971 by the Missouri Basin Interagency Committee). The commission also consummated a memorandum of agreement with the U.S. Water Resources Council (WRC), whereby the commission assumed the regional sponsorship for the 1975 National Assessment of Water and Related Land Resources.

At its March meeting, the commission acted to integrate the framework update program with the 1975 national assessment. Both studies are scheduled for 1977 completion. In fulfillment of a contract with WRC, the commission staff developed and submitted an example regional report for the national assessment to assist the council's regional efforts. The staff also developed a series of water and related land resources problem and issue statements and conducted an extensive analysis of water and related land resources uses and associated socio-economic data which was prepared at the national level.

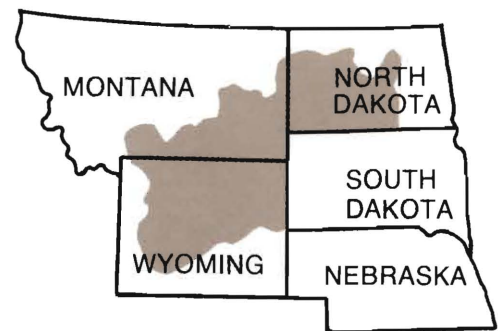
LOOKING AHEAD

The Missouri River Basin Commission is prepared to embark upon two new programs in FY 76 that will have significant impact for years to come—a comprehensive, coordinated joint planning (CCJP) budget request and the Yellowstone River Basin and Adjacent Coal Field Area Level B Study in Montana, Wyoming and North Dakota.

The concept of a CCJP budget—a budget that would include direct funding to a commission to

conduct special studies identified through a commission established priority process as necessary elements of a CCJP—originated with MRBC. MRBC believes water and related land resource planning can be made more responsive to the needs and desires of people in the region by the timely implementation of recommended priorities through a consistent CCJP budget.

In addition to CCJP budget special studies, major comprehensive river basin studies will continue to be funded by Congress through the U.S. Water Resources Council on an individual basis. One that has been endorsed by the President for Congressional funding in FY 76 is the energy-related Yellowstone River Basin and Adjacent Coal Field Area Level B Study.



Yellowstone Level B Study Area

More than one-half of the known recoverable coal reserves in the nation are located in southeastern Montana, northwestern Wyoming and western North Dakota. Development of those resources would place significant demands on the water resources of the region. Many water development issues will need to be resolved if such energy development is to take place.

In addition to the studies required for completion of the Missouri River Basin's CCJP, the commission will continue to strive toward meaningful coordination of water resource planning programs throughout the basin.



ROCK BLUFF
PORT OF HOUSTON, TEXAS.

AUDITOR'S REPORT

ARTHUR YOUNG & COMPANY

1850 ONE FIRST NATIONAL CENTER
1620 DODGE STREET
OMAHA, NEBRASKA 68102
TELEPHONE 346-9494

To the Chairman
The Missouri River Basin Commission

We have examined the accompanying statement of cash receipts and expenditures and unobligated cash balances of the Missouri River Basin Commission at and for the year ended June 30, 1975. Our examination was made in accordance with generally accepted auditing standards, and accordingly included such tests of the accounting records and such other auditing procedures as we considered necessary in the circumstances. We have previously made a similar examination for the prior year.

In our opinion, the statement mentioned above presents fairly the unobligated cash balance of the Missouri River Basin Commission at June 30, 1975 and 1974 and its cash receipts and expenditures for the years then ended in accordance with the basis described in Note 1, which basis is consistent with that of the preceding year.

August 14, 1975

MISSOURI RIVER BASIN COMMISSION
 STATEMENT OF CASH RECEIPTS AND EXPENDITURES
 AND UNOBLIGATED CASH BALANCES

Years ended June 30, 1975 and 1974

	Operating fund	Platte River Basin study	National assessment	Special assignments and study proposals	1975 total	1974 total
Cash balance at beginning of year	\$ 54,422	\$ 82,115	\$ —	\$ 10,474	\$147,011	\$106,957
Receipts:						
United States Government	125,000	93,000	51,000	4,500	273,500	225,500
Colorado	12,900	—	—	—	12,900	20,164
Iowa	8,638	—	—	—	8,638	11,363
Kansas	12,238	—	—	—	12,238	9,790
Minnesota	10,225	—	—	—	10,225	8,180
Missouri (Note 4)	36,844	—	—	—	36,844	—
Montana	14,306	—	—	—	14,306	11,445
Nebraska	15,331	—	—	—	15,331	12,265
North Dakota	12,088	—	—	—	12,088	5,217
South Dakota	12,587	—	—	—	12,587	10,070
Wyoming	11,044	—	—	—	11,044	16,316
Rent and expenses reimbursed	1,756	—	778	—	2,534	—
	<u>272,957</u>	<u>93,000</u>	<u>51,778</u>	<u>4,500</u>	<u>422,235</u>	<u>330,310</u>
Expenditures:						
Salaries and benefits (Note 3)	160,579	42,707	24,326	11,922	239,534	167,073
Travel and transportation	8,930	2,208	5,618	6,584	23,340	17,513
Rent, communications and utilities	34,155	11,976	2,250	—	48,381	35,354
Printing and reproduction	18,319	6,637	675	440	26,071	17,901
Other services	1,813	23,108	—	300	25,221	34,695
Supplies and materials	6,857	1,425	303	13	8,598	8,264
Equipment (Note 1)	9,120	2,395	957	—	12,472	9,456
Repayment of U.S. Government advances (Note 4)	58,200	—	—	—	58,200	—
	<u>297,973</u>	<u>90,456</u>	<u>34,129</u>	<u>19,259</u>	<u>441,817</u>	<u>290,256</u>
Cash balance at end of year (Note 5)	29,406	84,659	17,649	(4,285)	127,429	147,011
Less:						
Unpaid obligations at end of year	(6,598)	(1,389)	(1,493)	(3,212)	(12,692)	(23,723)
Advances from federal government on state funds received (Note 4)	—	—	—	—	—	(36,356)
Unobligated cash balance at end of year (Note 5)	<u>\$ 22,808</u>	<u>\$ 83,270</u>	<u>\$ 16,156</u>	<u>\$ (7,497)</u>	<u>\$114,737</u>	<u>\$ 86,932</u>

See accompanying notes.

MISSOURI RIVER BASIN COMMISSION
 NOTES TO FINANCIAL STATEMENT

June 30, 1975 and 1974

1. Accounting Policies

Revenue and disbursement recognition—The records of the Missouri River Basin Commission are maintained on the cash accounting basis. Cash balances are modified by unpaid obligations to arrive at the unobligated cash balance at the end of the year.

Equipment—Property and equipment acquired are expensed during the period purchased and consequently no depreciation is recorded on fixed assets. Certain items of furniture are provided at no cost by the General Services Administration.

Income taxes—The Commission is exempt from federal income tax under Section 501(c) (3) of the Internal Revenue Code and is treated as an organization which is not a private foundation.

Services provided by other agencies—The salary and related fringe benefits of the Commission chairman is provided by the Water Resources Council and these costs are not included in the financial statement.

2. Leases

The Commission leases office space under long-term non-cancellable leases. Rental expense amounted to \$35,599 in 1975 and \$27,425 in 1974. Rentals under these leases for future years by location follows:

	1976	1977	1978	1979	Total
Omaha	\$ 28,835	\$ 30,999	\$ 30,999	\$ 2,583	\$ 93,416
Lincoln	5,653	882	—	—	6,535
Billings.....	1,764	—	—	—	1,764
Bismarck	2,400	—	—	—	2,400
	<u>\$ 38,652</u>	<u>\$ 31,881</u>	<u>\$ 30,999</u>	<u>\$ 2,583</u>	<u>\$104,115</u>

3. Employee Benefits

The Commission has a pension plan covering most of its employees. The Commission and the employee must contribute specified amounts to the plan as defined in the pension trust agreement. Cash expenditures by the Commission for fiscal 1975 and 1974 totaled \$10,868 and \$8,521 respectively. There are no unfunded past service costs at June 30, 1975 or 1974. The effect, if any, that the Employee Retirement Income Security Act of 1974 will have on pension expense has not been determined at this time.

4. Unremitted Federal Government Advances Received From States

The federal government had advanced funds in behalf of certain states covering their respective shares of the 1973

and 1974 budget allocations. The Commission repaid funds received from these states to the federal government in 1975. The following is a summary of the obligation for unremitted federal government advances received from the states:

	1975	1974
Advances received—cumulative	\$ —	\$58,200
Balance due from Missouri at June 30	—	<u>21,844</u>
Obligations for unremitted federal advances received from states	<u>\$ —</u>	<u>\$36,356</u>

5. Subsequent Event

In July 1975, the Commission received \$8,852 from the Water Resources Council covering expense reimbursements of certain 1975 expenses charged to special assignments and study proposals. Had these reimbursements been received by June 30, 1975, deficits in the cash balance and the unobligated cash balance for special assignments and study proposals would have been eliminated.

MRBC COMMITTEES

Policy

Keith S. Krause, Kansas, Chairman

Priorities

Paul L. Harley, Interior, Chairman

Framework Updating

John M. Dewey, Kansas, Chairman

Middle and Lower Missouri Flood

Plain Issues

William C. Brabham,

Iowa, Chairman

Action Task Force on the Yellowstone

River Basin

Chris Garvey, Army, Chairman

James River Basin

Paul L. Harley, Interior, Chairman

Saline Seeps

Van K. Haderlie,

Agriculture, Chairman

MRBC STAFF

Nicholas L. Barbarossa

Director of Planning and
Technical Services

Richard E. Brown

Executive Secretary-Director
of Administration

William C. Ramige

Information Officer

Gerald R. Zimmerman

River Basin Planner

Alan S. Hersch

River Basin Planner

Donald A. Becker

River Basin Planner

Rosemarie M. Schweigart

Administrative Assistant

Linda J. Stillinger

Secretary to the Chairman

Sherie E. Hansen

Secretary to the Director
of Planning

Janet L. Bean

Principal Mag Card II

Operator/Secretary

M. Jane Shoemake

Secretary/Receptionist

Linda J. Bramer

Librarian

National Assessment

A. C. Griesel

Regional Study Director

William B. Hutchinson

Assistant Regional Study Director

Rosemary Mills

Secretary

Platte Level B Study

Carroll M. Hamon

Director

Teresa J. Simmons

Secretary

Yellowstone Level B

Coordination Team

Robert H. Madsen

Manager

Emma M. Cotter

Secretary

Keith H. Corrigall

Assistant Manager, Montana

Donald L. Ohnstad

Assistant Manager, North Dakota

Lorna R. Sanders

Secretary

Paul Shore

Assistant Manager, Wyoming

Bessie B. Munns

Secretary

MRBC COMMITTEES

- Policy
 - Keith S. Krause, Kansas, Chairman
- Priorities
 - Paul L. Harley, Interior, Chairman
- Framework Updating
 - John M. Dewey, Kansas, Chairman
- Middle and Lower Missouri Flood Plain Issues
 - William C. Brabham, Iowa, Chairman
- Action Task Force on the Yellowstone River Basin
 - Chris Garvey, Army, Chairman
- James River Basin
 - Paul L. Harley, Interior, Chairman
- Saline Seeps
 - Van K. Haderlie, Agriculture, Chairman

MRBC STAFF

- Nicholas L. Barbarossa
 - Director of Planning and Technical Services
- Richard E. Brown
 - Executive Secretary-Director of Administration
- William C. Ramige
 - Information Officer
- Gerald R. Zimmerman
 - River Basin Planner
- Alan S. Hersch
 - River Basin Planner
- Donald A. Becker
 - River Basin Planner
- Rosemarie M. Schweigart
 - Administrative Assistant
- Linda J. Stillinger
 - Secretary to the Chairman
- Sherie E. Hansen
 - Secretary to the Director of Planning
- Janet L. Bean
 - Principal Mag Card II Operator/Secretary
- M. Jane Shoemake
 - Secretary/Receptionist
- Linda J. Bramer
 - Librarian

National Assessment

- A. C. Griesel
 - Regional Study Director
- William B. Hutchinson
 - Assistant Regional Study Director
- Rosemary Mills
 - Secretary

Platte Level B Study

- Carroll M. Hamon
 - Director
- Teresa J. Simmons
 - Secretary

Yellowstone Level B Coordination Team

- Robert H. Madsen
 - Manager
- Emma M. Cotter
 - Secretary
- Keith H. Corrigall
 - Assistant Manager, Montana
- Donald L. Ohnstad
 - Assistant Manager, North Dakota
- Lorna R. Sanders
 - Secretary
- Paul Shore
 - Assistant Manager, Wyoming
- Bessie B. Munns
 - Secretary

