

CIRCULAR A-1

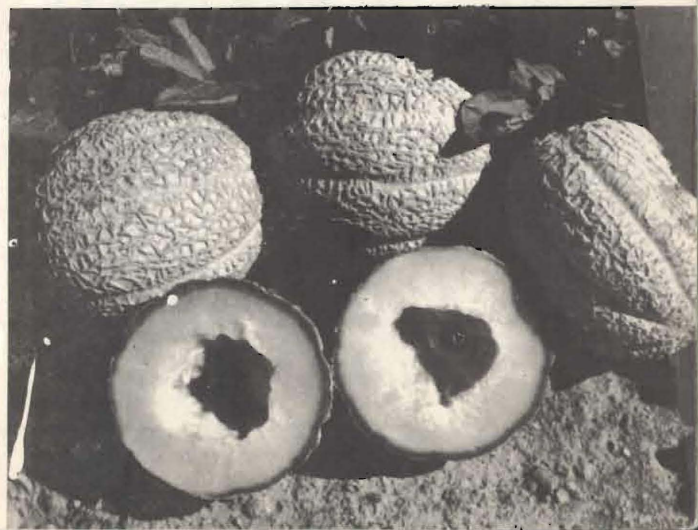
Cooperative
North Dakota State University
Extension Service
Fargo, North Dakota/

Garden Varieties

Robert G. Askew
Extension Horticulturist

Earl Scholz
Assistant Horticulturist

Neal Holland
Associate Horticulturist
Agricultural Experiment Station



RECOMMENDED VEGETABLES

VEGETABLE	DAYS	VARIETAL DESCRIPTION AND USE	VEGETABLE	DAYS	VARIETAL DESCRIPTION AND USE
BEANS (GREEN)* Topcrop *(Freezing, See p. 4)	49	Pods round, medium green, somewhat curved; use fresh, frozen.	BROCCOLI*		Plant transplants. Use while buds are small and tight; do not allow heads to flower.
Provider	50	Dependable, heavy early yields; pods straight and smooth, fully round.	Cleopatra	55	Hybrid, large, compact central head; vigorous side shoots. Long period of production.
Wade	53	Pods round, dark green, straight; long harvest season. Use fresh or frozen.	Spartan Early	55	Dark green head, short stem; spring or fall planting.
Improved Tendergreen	54	More productive than Tendergreen type. Pods set well off the ground.	BRUSSEL SPROUTS*		Requires aphid control. Plant transplants.
BEANS (WAX)* Topnotch Golden Wax	50	Improved Golden Wax, pods thick-flat, golden-yellow, stringless. Use fresh or frozen. Early.	Jade Cross Hybrid	85	Plants tall; sprouts firm, medium size.
Pencil Pod Black Wax	56	Popular for home freezing. Very productive.	CABBAGE		Plant transplants. (Early varieties may be direct seeded.)
BEANS (POLE)* Blue Lake	67	Good climber with pod set from base to top of plant. Excellent for freezing.	Stonehead	60	Extra early, extremely solid interior, very compact six inch heads 3½ lbs. Family size.
BEANS (LIMA)* Henderson Bush	65	Dependable. Very uniform growth. Table or freezing.	Golden Acre YR	63	Round, light green, small (3 lbs.) Family size.
BEETS*		Beet greens are an excellent source of Vitamin A.	Market Topper	73	Good quality, uniform heads and has the ability to stand without bursting.
Ruby Queen	52	Round with smooth shoulders and crown. Small tap root.	Market Prize	76	Vigorous, uniform hybrid. Blue-green color.
Detroit Dark Red	58	Globe shaped, skin dark red, flesh deep blood red.	Savoy King	82	Hybrid Savoy. Large, uniform heads, flattened, globe-shaped. Good quality. Split resistant.
Sweetheart	60	Extra sweet, tender, solid red color, good for pickling.	CABBAGE (CHINESE)		
			Michihli	75	Heads long and cylindrical, crisp, tender. Mild flavor. Used chiefly for salads. Plant seed June 1-10.

CASE

S
5
N9
A8X
70.1

VEGETABLE	DAYS	VARIETAL DESCRIPTION AND USE	VEGETABLE	DAYS	VARIETAL DESCRIPTION AND USE
CARROTS*		Excellent source of Vitamin A.	CUCUMBERS		
Nantes (Coreless)	68	Narrow cylindrical shape; medium long with slight taper and blunt tip. Crisp and tender.	Slicing:		
Red Cored Chantenay	68	Reddish-orange, uniform, tender and sweet. Core about same color as flesh. For storage, freezing and canning.	Spartan Valor	60	Gynoecious hybrid. Dark green, 8-9 inches long. Good producer.
			Princess	60	Gynoecious hybrid. Early; good yielder, fruits slim, dark green, quite long. Pick often.
			Gemini	61	Gynoecious hybrid. Heavy yielder.
			Marketer	66	Dark green, smooth. Good color, long, slim shape and firm flesh.
CAULIFLOWER*		Set out transplants about May 15-20. All must be tied as soon as curd is visible.	LETTUCE (BUTTER-HEAD)		
White Horse	55	Very uniform with deep mounded firm snow white heads.	Summer Bibb	62	Slow bolting; can be grown almost throughout the season.
Snowball Variety M.	59	Extra vigorous, large smooth white heads, well protected by inner fold leaves. Be certain to choose type M.	Buttercrunch	64	Vigorous, very attractive, delicious leaves with tender ribs.
SWISS CHARD			LETTUCE (HEAD)		
Lucullus	50	Leaves yellowish green, heavily crumpled with cream colored slender midrib.	Pennlake	72	Head medium to small. Interior crisp and firm. Best variety.
SWEET CORN*			LETTUCE (LEAF)		
Earliking	66	Ears 7" long, 12 row and well filled. Excellent first crop.	Black Seeded Simpson	44	Large, upright, compact, leaves light green, broad and frilled. Good quality.
Golden Rocket	67	Early market corn. Good quality.	Grand Rapids	45	Popular loose leaf variety capable of continuous growth under adverse conditions.
Spring Gold	67	Medium ears, 12-16 rows of small yellow kernels; good tip fill.	Slobolt	48	Grand Rapids type. Stands longer than other loose leaf types.
Morning Sun	72	Sweet tender kernels, outstanding in maturity class.			
Golden Beauty	73	Uniform ears, 6 to 7½ inches long. Does well in short season areas.	MUSKMELON		Set out 20 day old transplants for early crop. For more earliness and higher yield, use clear plastic mulch.
Barbecue	75	Slim ears, 12 rows, short plant; good quality. Use fresh or frozen.	Minnesota Midget	60	Early, small fruited (4 inch) short vine type.
Golden Cross Bantam	84	Plant tall, good quality; standard hybrid sweet corn. Fresh or freeze.	Delicious 51	Seeds 90 Transplants 78	Large oval to round fruits; coarsely netted. Orange flesh; quality good in warm seasons.
CUCUMBERS			Gold Star Hybrid	Seeds 94 Transplants 80	Oval fruit, medium size, heavily netted with firm rind; flesh orange. High quality despite adverse weather.
Pickling:					
Spartan Dawn	50	Gynoecious hybrid. Semi-blocky, slightly tapered toward blossom end, dark green, dark spines.			
Crusader	52	Gynoecious hybrid. This "all female" character often results in high yields.			

VEGETABLE	DAYS	VARIETAL DESCRIPTION AND USE	VEGETABLE	DAYS	VARIETAL DESCRIPTION AND USE
ONIONS		Direct seed or transplant for larger size.	RADISHES		
Early Yellow Globe	98	Medium large, globe to flattened globe, skin tough, light yellow, flesh firm and white.	Cherry Belle	24	Globe to round, bright cherry-red; solid and crisp.
Ebenezer (sets)	105	Medium size thick-flattened, small neck. Skin yellow, flesh fine textured, mild, very firm.	Champion	28	Large, remains crisp and firm to fairly large size.
Epoch	108	Medium large, deep round in shape, firm flesh and dark yellow skin.	White Icicle	30	Roots 4½ - 5 inches long, smooth, slender, tapering. White skin, mild.
Southport Red Globe	110	Medium large, deep globe shaped small neck, skin dark glossy red, flesh fine grained.	SPINACH		
Southport White Globe	110	Medium size, globe shaped. Skin pure white, flesh ivory-white, fine grained, mild flavor.	King of Denmark	45	Leaves medium sized, smooth, long petioles. Withstands heat.
PARSNIPS*			American	52	Leaves glossy, thick, dark green, rounded, heavily savoyed. Slow bolting type.
Improved Hollow Crown	95	10 inches long by 3 inches thick at the shoulder. Vigorous, good quality.	SQUASH*		
PEAS*			<u>Summer:</u>		
Little Marvel	62	Plants about 1½ feet tall; productive. 7-8 peas per pod.	Early Prolific Straightneck	51	Plants bush, fruits straight, tapered; skin fairly smooth, lemon yellow. Fresh or frozen.
Lincoln	66	Large vine, pod 3-3½ inches. 5-7 per pod. Long season harvest.	Seneca Butterbar	51	Hybrid, long cylindrical shape. Bush plants. Yellow fruit, productive.
Wando	70	Large upright vine, peas medium large; good quality.	<u>Winter (Storage):</u>		
PEPPERS*		Set out transplants	Gold Nugget	90	Bush type. Fruits small, flattened, medium thick, golden yellow flesh. Hard orange skin. Bake whole.
Merrimack Wonder	63	Very early. Yields under adverse conditions.	Buttercup	100	Large vine - green skin with turban. Excellent quality.
Vinedale	64	Small plants, medium size; tapered; use for early red peppers.	Kindred	100	Short vine, productive. Fruits red-orange; medium size.
Lincoln Belle	65	Sets good quality fruit during cooler early summer season. Large, blocky, high quality.	TOMATOES		
POPCORN		May not mature well in northern half of state.	Early Chatham	55	Small compact plants. Fruits globe shaped, medium size.
Burpee's Peppy Hybrid for trial	90	High yielding hybrid, white kernels, hullless.	New Yorker for trial	59	Early, medium size fruits. Very susceptible to leaf diseases. Keep sprayed with fungicide.
Japanese Hullless	95	Good yielder.	Starfire	65	Early determinate variety - globe shaped fruits.
PUMPKIN*			Sheyenne	66	Medium to large fruits, globular, smooth. Very productive - main crop tomato.
Cheyenne Bush	100	Small, bright orange, flesh solid, deep golden yellow - excellent for pies.	Cavalier	66	Sheyenne (above) is an improved Cavalier.
Sugar Pie	108	6-8 lbs., dark orange. Excellent for canning and pie.	Firesteel	68	Scarlet, large, smooth flattened to deep globe, firm flesh.
			Spring Giant	68	Hybrid, vigorous vines. Large, deep globular fruits.
			Small Fry	68	Hybrid cherry tomato. Color is bright, 1-inch fruit, marble round in shape.

VEGETABLE	DAYS	VARIETAL DESCRIPTION AND USE	VEGETABLE	DAYS	VARIETAL DESCRIPTION AND USE
WATERMELON			Sugar Baby	88	Ice box variety, oval-round; skin black green with faint darker strips. Very attractive when cut.
New Hampshire Midget	80	Fruits small (2-4 lbs.) oval-round, skin medium green, darker green netting. Fair quality, seedy.	F ₁ Hybrid Top Yield for trial	90	Vigorous, disease resistant. Oval shaped, light-green skinned, about 20 lbs. Good quality. High yielding and early production when transplanted on clear plastic mulch.
Takii Gem	80	"Ice Box Type", sweet, red flesh. Seeds are small and few. Good quality.			

USEFUL GARDEN INFORMATION

PLANT IN FIELD	VEGETABLE VARIETIES	SEED IN HOTBED	DISTANCE BETWEEN ROWS	DISTANCE BETWEEN PLANTS
HARDY VEGETABLES: Sow seed or transplant hardened plants as early as ground is ready to work well in spring (Average about April 20 for 2/3 of state)	Asparagus		4 ft.	24 in.
	Broccoli	Apr. 1	3 ft.	18 in.
	Cabbage (early)	Apr. 1	3 ft.	18 in.
	Cabbage (late)		3 ft.	18-24 in.
	Onions (seed)		1½ ft.	2 in.
	Onions (transplanting)	Apr. 1	1½ ft.	4 in.
	Peas		2 ft.	2 in.
	Radishes		1½ ft.	1 in.
	Rhubarb		5 ft.	4 ft.
	Rutabaga		2 ft.	6 in.
Spinach		2 ft.	4 in.	
HALF-HARDY VEGETABLES: Sow seed or transplant hardened plants a week or two before average date of last killing frost in your area. (Average about May 10 for 2/3 of state)	Beets		2 ft.	2 in.
	Carrots		2 ft.	2 in.
	Cauliflower	Apr. 1	3 ft.	18 in.
	Lettuce (leaf)		2 ft.	8 in.
	Lettuce (head)	Mar. 15	2 ft.	15 in.
	Parsnips		2 ft.	4 in.
	Potatoes		3 ft.	12 in.
	Swiss Chard		2 ft.	6 in.
TENDER VEGETABLES Sow seed or transplant plants when soil is warm and after average date or danger of last killing frost in your area. (Average about May 25 for 2/3 of state)	Beans (wax and green)		2 ft.	4 in.
	Beans (dry and field)		2 ft.	4 in.
	Beans (lima)		2 ft.	4 in.
	Cucumbers		5 ft.	1 ft.
	Muskmelons		8 ft.	1 ft.
	Peppers	Apr. 1	3 ft.	18 in.
	Popcorn		3 ft.	12 in.
	Pumpkins		10 ft.	2 ft.
	Squash (summer)		3 ft.	2 ft.
	Squash (winter)		10 ft.	2 ft.
	Sweet Corn		3 ft.	12 in.
	Tomatoes	Apr. 20	5 ft.	4 ft.
Watermelons		8 ft.	1 ft.	

● Plant peas in paired rows 6" - 12" apart with 2 foot aisles between double rows.

●● Vine crops, though commonly planted in hills, would be best grown in rows with plants spaced one to two feet apart.

Although many strains and varieties of garden vegetables may be acceptable, some have consistently performed well under our conditions. Suggested vegetable varieties for North Dakota are listed in order of maturity (number of days required to produce a usable product) for each kind of vegetable. Seasonal weather conditions and growing location can influence the amount of time required to mature a given vegetable. We suggest selection of short season varieties for northern sections of the state. Vegetables starred (*) suitable for freezing; all varieties acceptable.