

# RANGE SHELTER

## For Chickens



Raising chicks can be made much easier and safer by the use of a range shelter. The primary purpose of the wire-floored, screened-in range shelter for rearing chickens is *sanitation*. It also provides shelter and protection from sun and rain. Birds "locked-up" in a range shelter are protected from vermin such as skunks, minks, etc., yet have an abundance of fresh air.

The range shelter is a valuable piece of equipment for use in a sanitary rearing program and is recommended by the NDAC Extension Service for that purpose.

NORTH DAKOTA AGRICULTURAL COLLEGE  
EXTENSION SERVICE  
Fargo, North Dakota

5  
544.3  
.N9  
A8  
no. 100

544.3  
.N9  
A8  
no. 100

# This Range Shelter Can Be Constructed

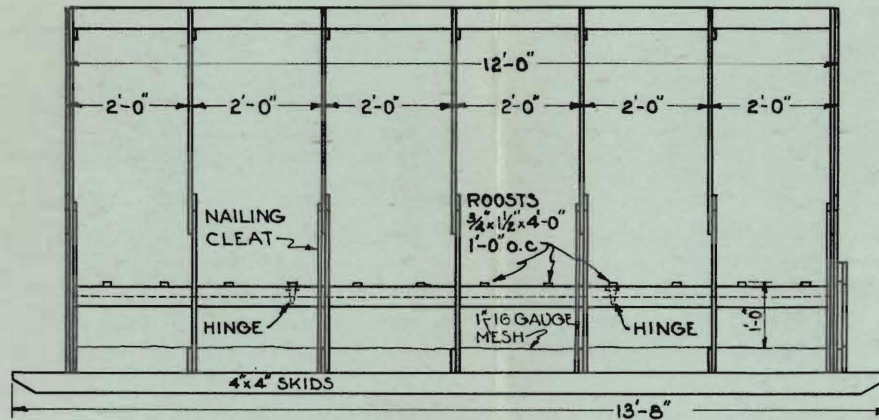
This range shelter can be constructed:

1. With side and end panels as shown.
2. With side panels on hinges so the sides can be opened.
3. With side panels removable.
4. Without side or end panels.

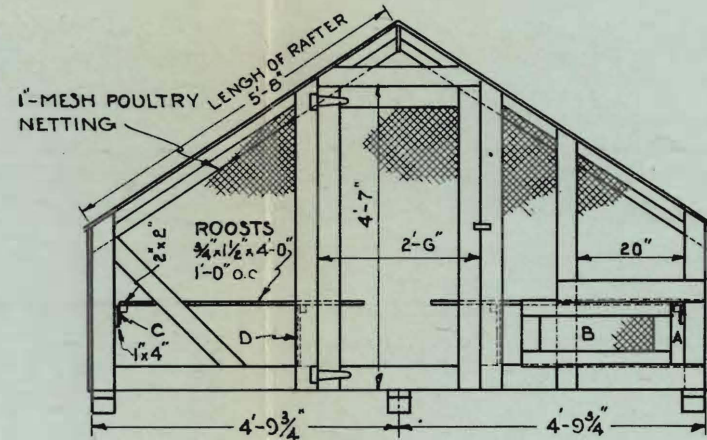
The dimensions of the plan shown make it possible to cut one roof and one side section from a standard 4' x 8' sheet of any suitable weather proof building material. The overall dimensions and bill of materials should be adjusted as required if building materials of any other size are used or if no side panels are used. If sheet metal is used for roofing

use dimensions that will eliminate having to cut the sheets.

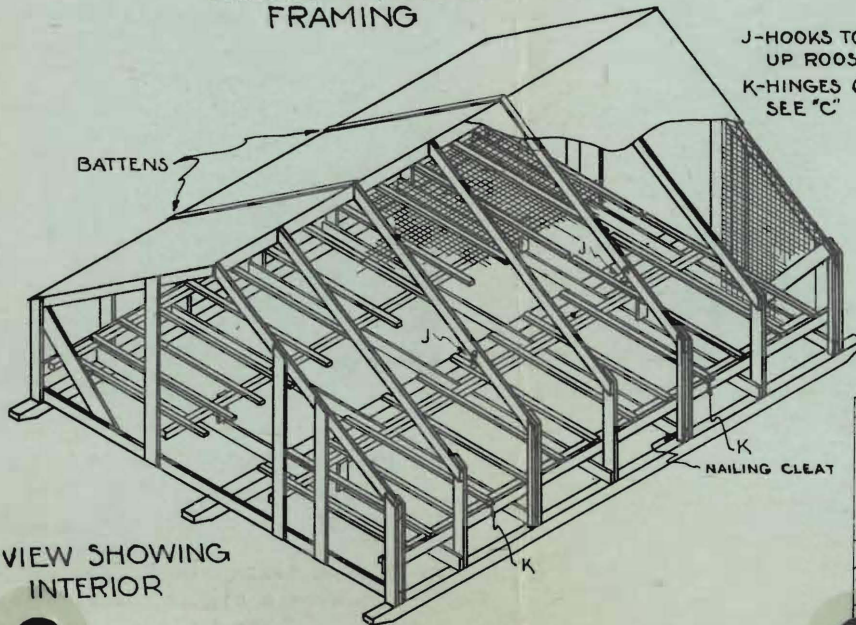
If side and end panels are not used burlap, canvas or some other suitable material should be used to provide some protection from the weather.



SIDE ELEVATION-OF FRAMING



FRONT ELEVATION

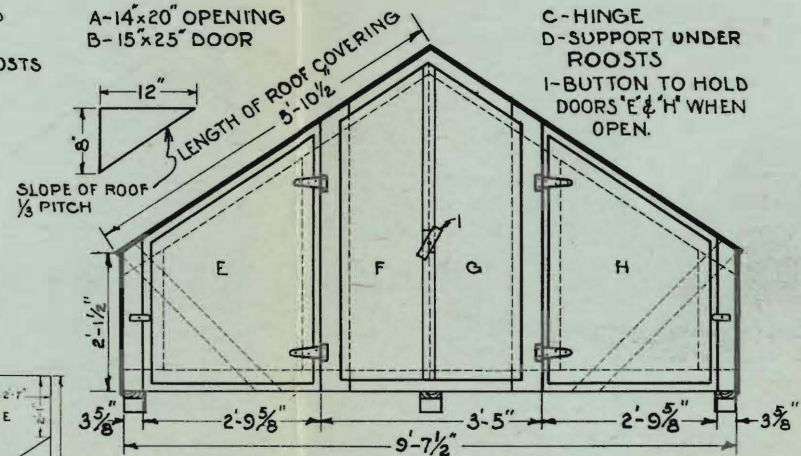


VIEW SHOWING INTERIOR

J-HOOKS TO HOLD UP ROOSTS.  
K-HINGES ON ROOSTS SEE "C"

A-14'x20" OPENING  
B-15'x25" DOOR

C-HINGE  
D-SUPPORT UNDER ROOSTS  
I-BUTTON TO HOLD DOORS 'E' & 'H' WHEN OPEN.

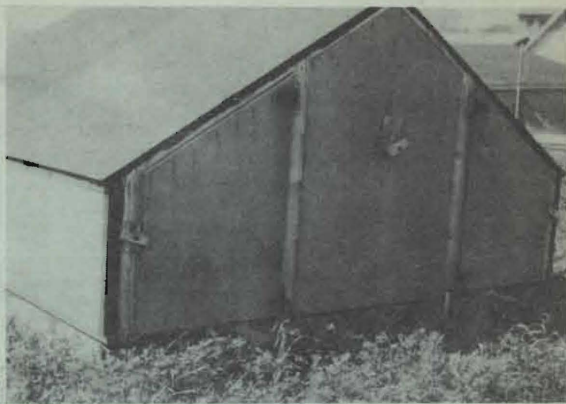


REAR END ELEVATION





# What A Range Shelter Will Do



1. Separates the young growing pullets from the old hens. (This is the first "commandment" in a successful sanitation program.)

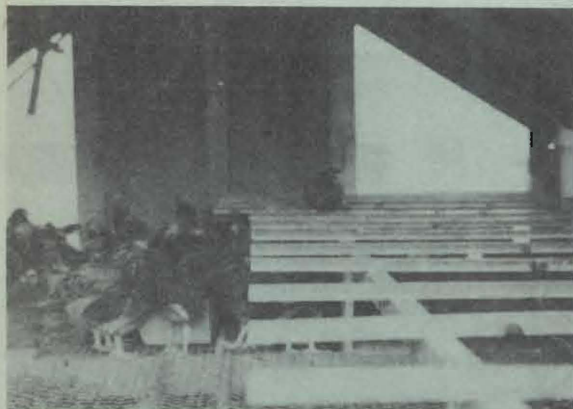
2. Permits full use of poultry pasture. It is on skids and can be moved easily. In order to get chickens to eat the maximum amounts of pasture, and save feed, juicy tender grasses must be growing just outside their front door.



3. Produces better pullets. Pullets grown on clean, green pasture in an open range shelter are better pullets.

4. Lowers death loss. Poultry producers can grow a higher percentage of chicks started. There is less loss from disease and farm accidents.

5. Saves labor. Young chickens grown in a range shelter require much less labor, than where they have the "run" of the place.



## BILL OF MATERIALS

5 pcs 1"x4"-12' ridge boards, doors, roosts  
14 pcs 1"x4"- 6' rafters  
15 pcs 1"x4"-10' studs, floor joists, brace  
3 pcs 4"x4"-12' skids  
4 pcs 2"x2"-12' roosts  
20 pcs 1"x2"- 4' roosts  
6 pcs 1"x2"-4½' roosts  
1 pcs 1"x2"- 5' batten  
32 lin. ft. roof and side battens  
7 sheets 4'x8' weather proof building material

## HARDWARE

10 4" T Hinges  
4 sets screw hooks  
116 sq. ft. 1" mesh, 16 gauge hardware cloth  
10 ft. 36" width, 1" mesh poultry netting  
5 ft. 30" width, 1" mesh poultry netting  
3 lbs. 6 penny box nails  
2 lbs. poultry netting staples

BY

ARTHUR H. SCHULZ, EXTENSION ENGINEER  
J. EARL COOK, EXTENSION POULTRYMAN