



A **Museum** of Architectural Elements

By Shawn Crowley



What is the **language** of architecture, and how can it be
understood by **non-designers**?



□ Claim:

- Architects communicate through the innovation, adaption and organization of elements like: structure, materials, motifs, signs, symbols and forms with a society who's members are diverse in their understanding of these elements

❑ Premises:

- Architects have a unique language consisting of many elements that are not all readily understood by members of society.
- Communication can be defined as the interchange or transmission of thoughts, ideas, opinions or information.
- By viewing a building, society communicates with the architect who designed it, but each person will interpret the conversation based on their understanding of the elements in the language of architecture.
- The changing or reordering of architectural elements can alter the message that is received by the viewer.

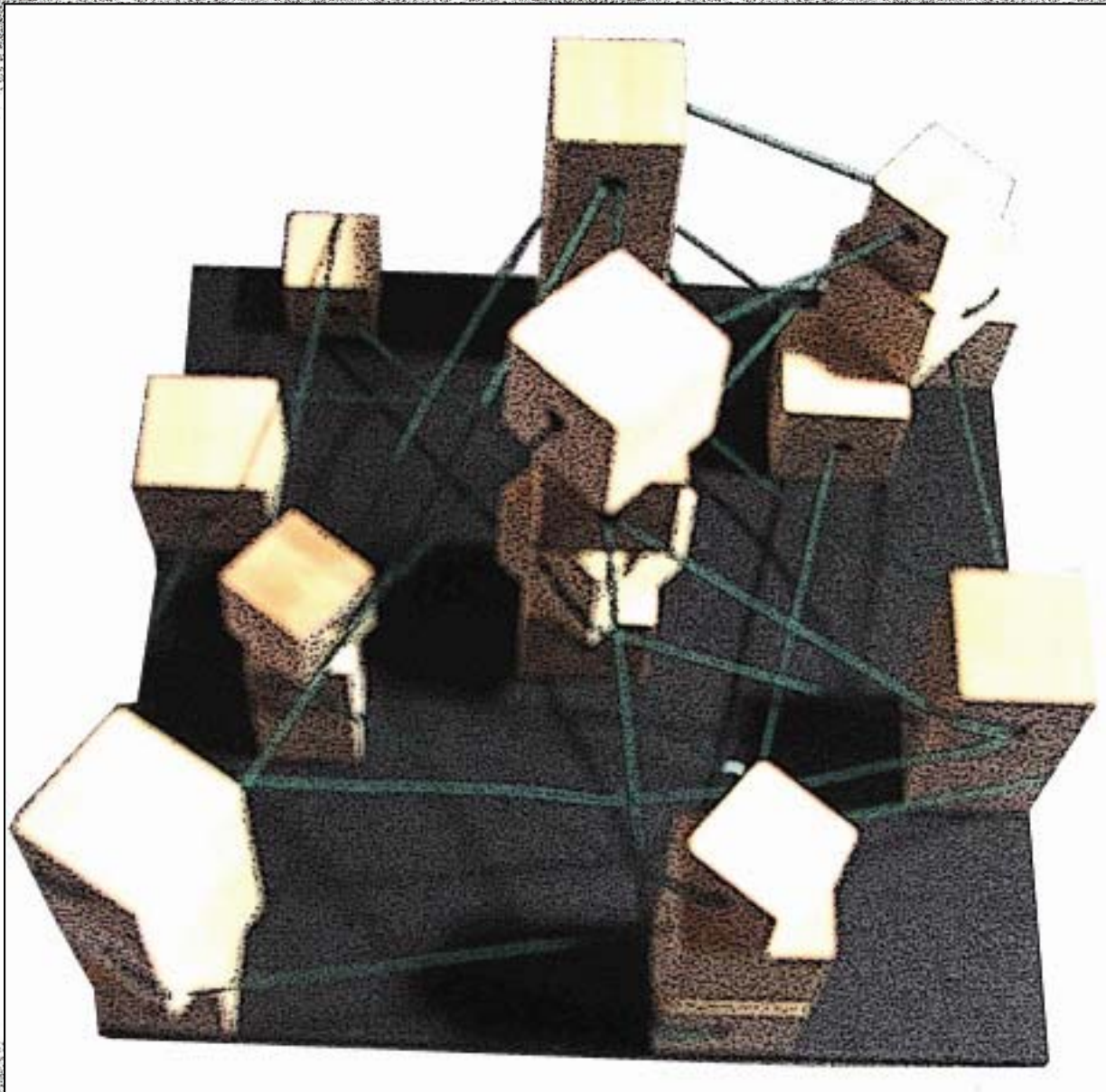
❑ Theoretical Premise/Unifying Idea:

- Communication using the language of architecture is multifaceted and not completely understood by any single person. Designers can use architectural elements understood by people as a way of closing the gap in communication.

❑ Project Justification:

- There are more non-designers in this world than there are designers, so buildings should be designed with this larger group in mind. Architecture is used by many different people in society so it is also important that it is understood by many different people.

How do we **understand** the elements of Architecture?



Parti

Classroom/Meeting Spaces

Multi-use Space

Temporary Exhibits

Gallery Spaces

- Interpretation
- Form
- Materials
- Virtual Reality
- Light Quality

Office Space

Gift Shop

Building Analog/Sculpture
Plaza



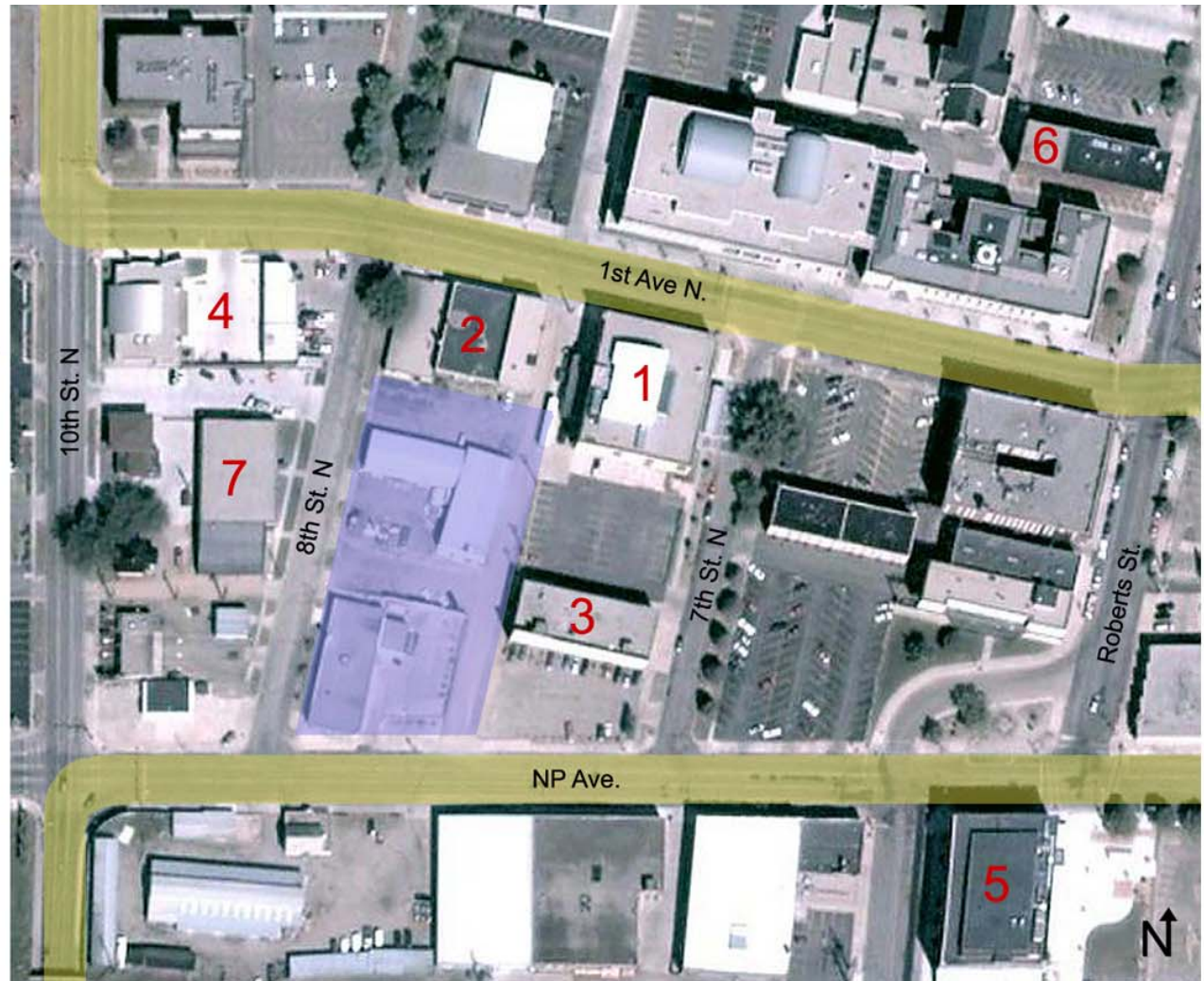
Fargo

Site

Site Location – Fargo, ND

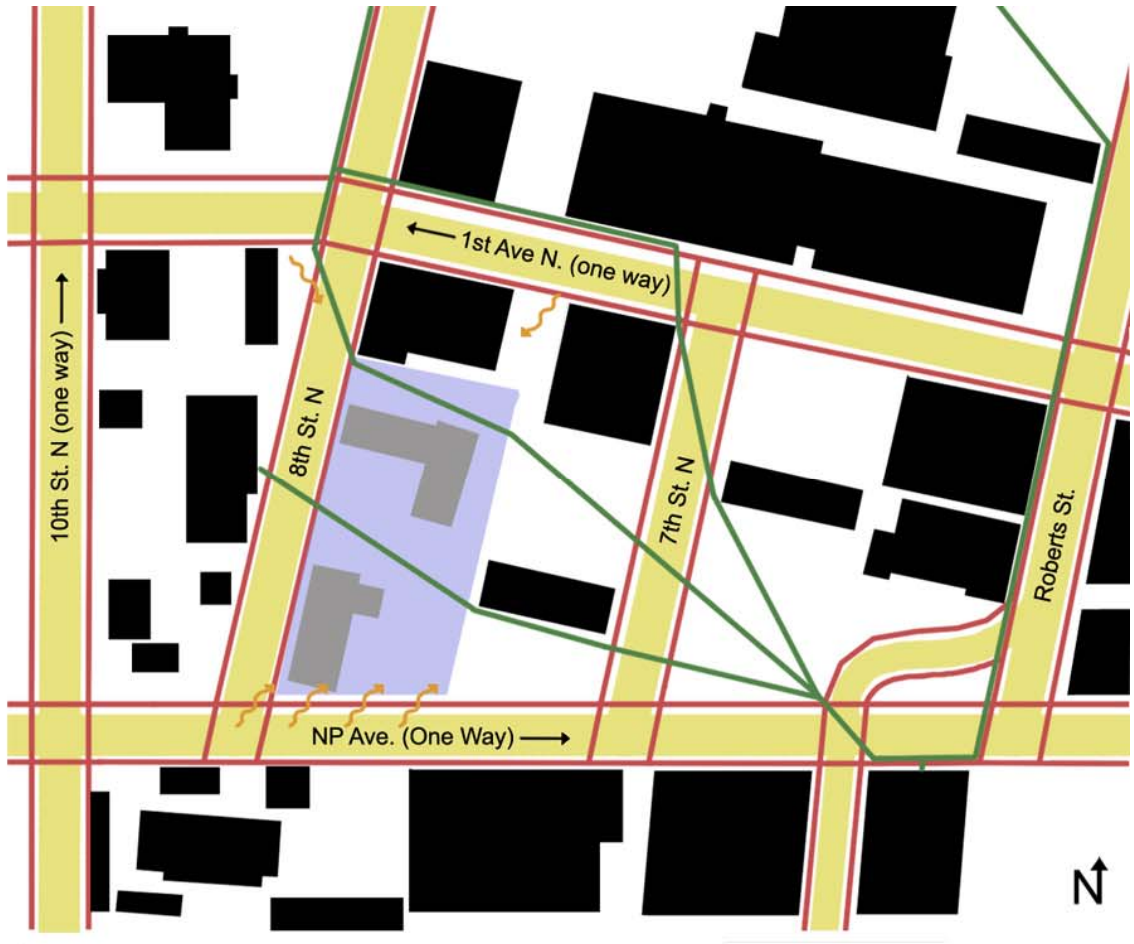
- Site Boundries
- Context
- Bus Routes

- 1.Plains Art Museum
- 2.Planned PAM expansion
- 3.T.L. Stroh Architects
- 4.Foss Architects
- 5.NDSU Rennaisance Hall
- 6.EAPC Architects
7. 8th St. Lofts



Site Location – Downtown Fargo, ND

- Site Boundries
- Buildings to be Demolished
- Designated Pedestrian Paths
- Observed Pedestrian Paths
- Automobile Paths
- Noise



Traffic Diagram





Lumber Storage

[Back to Site Context](#)



Labor Ready

[Back to Site Context](#)









Center for Creativity

[Back to Site Context](#)



Existing Mural Wall

[Back to Site Context](#)



Plains Art Museum

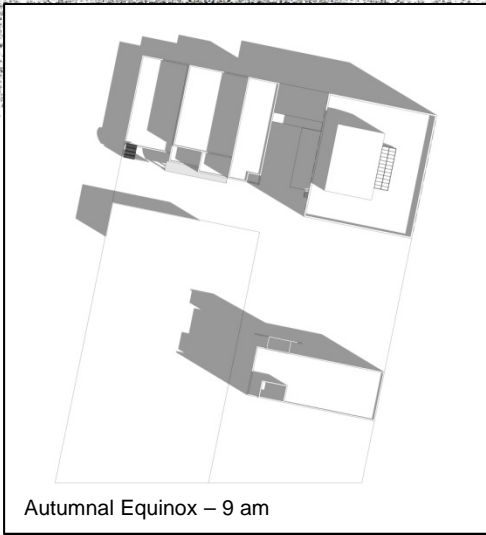
[Back to Site Context](#)



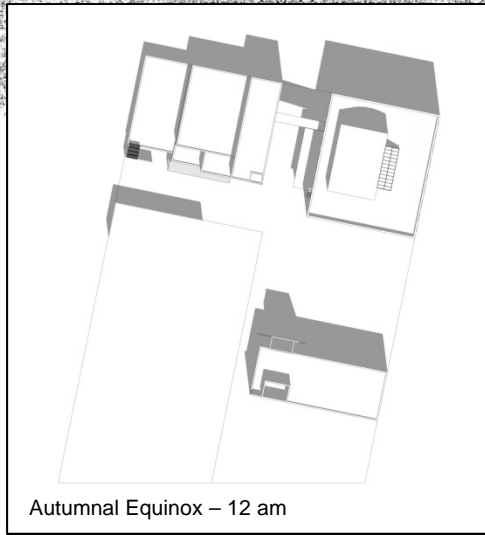
T.L. Stroh's Office

[Back to Site Context](#)

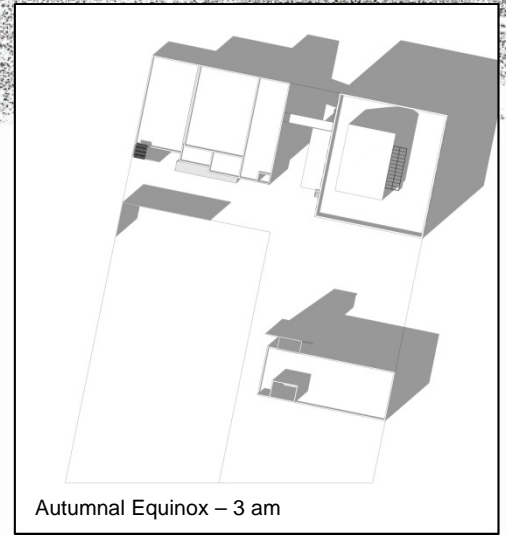
- ❑ Relate my building to the existing buildings around my site.
- ❑ Prevent my building from blocking daylight to surrounding buildings.
- ❑ Maintain as much of the existing Kung Fu Panda Mural as possible.
- ❑ Connection through a skywalk to the Center of Creativity.
- ❑ Address and maintain the existing pedestrian path across my site.
- ❑ Create a building with unique experiences throughout.



Autumnal Equinox – 9 am



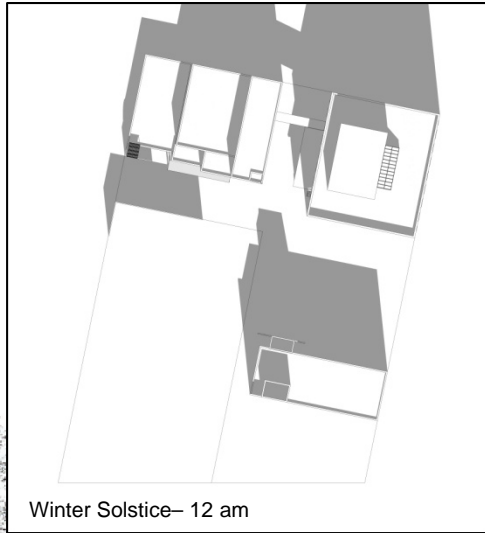
Autumnal Equinox – 12 am



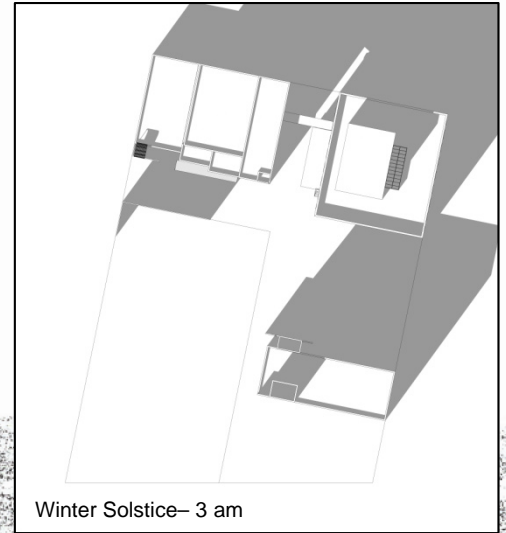
Autumnal Equinox – 3 am



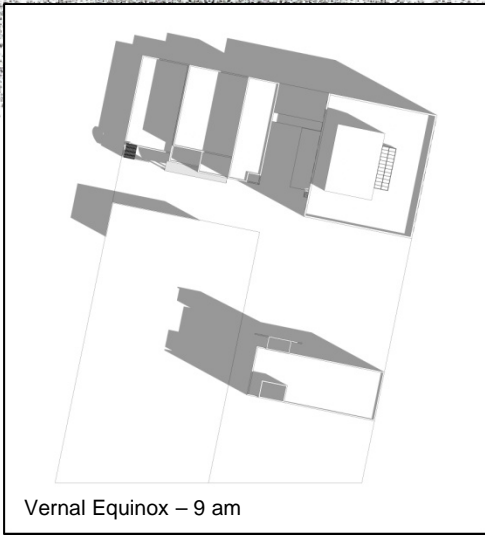
Winter Solstice– 9 am



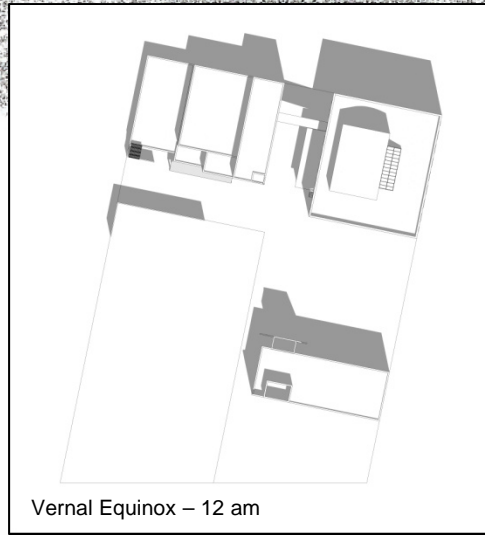
Winter Solstice– 12 am



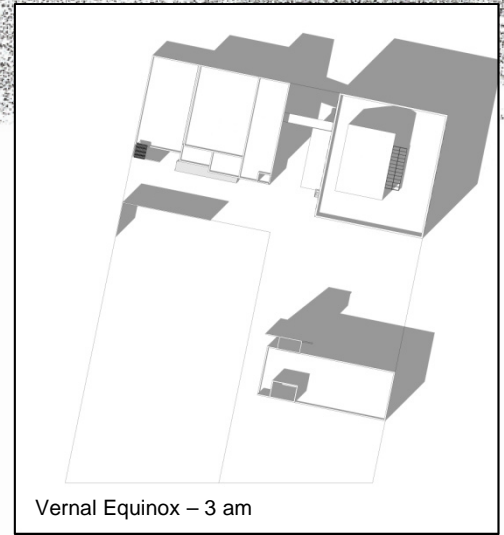
Winter Solstice– 3 am



Vernal Equinox – 9 am



Vernal Equinox – 12 am



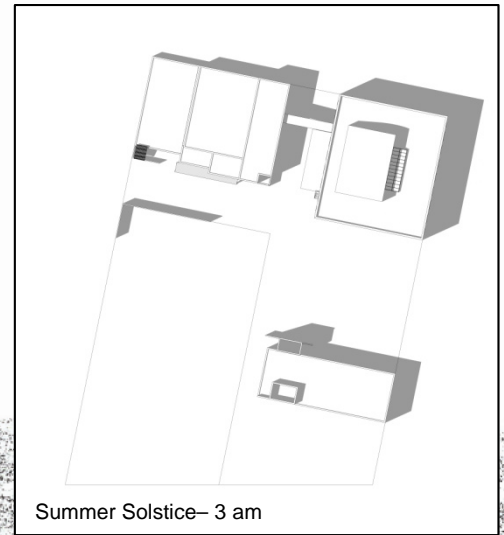
Vernal Equinox – 3 am



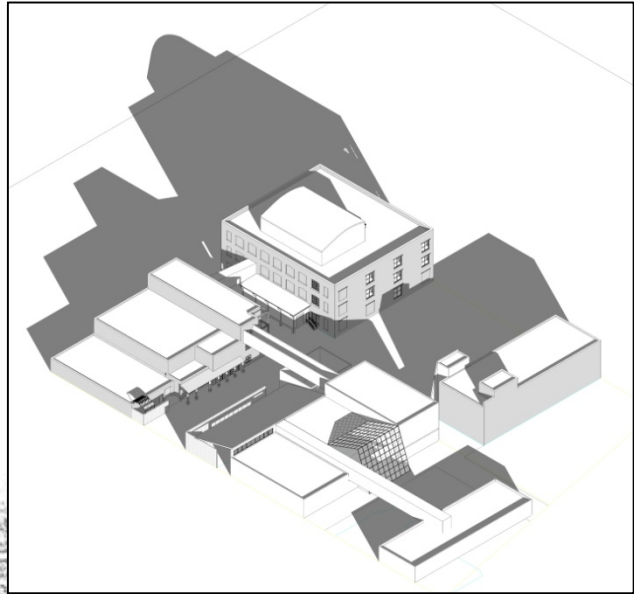
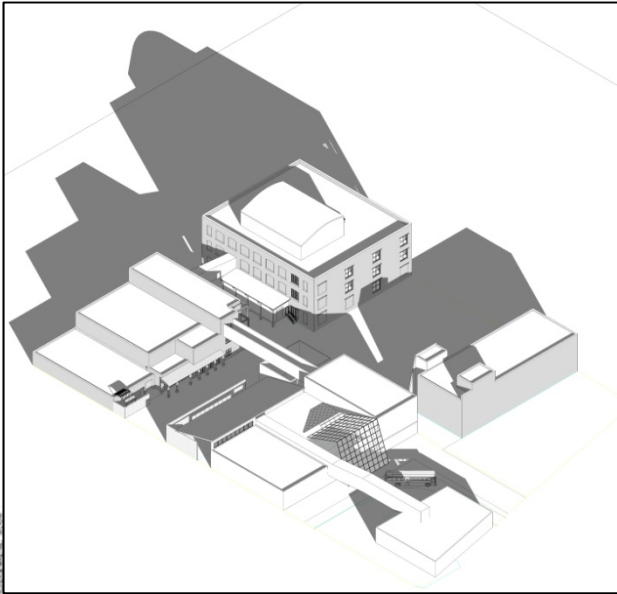
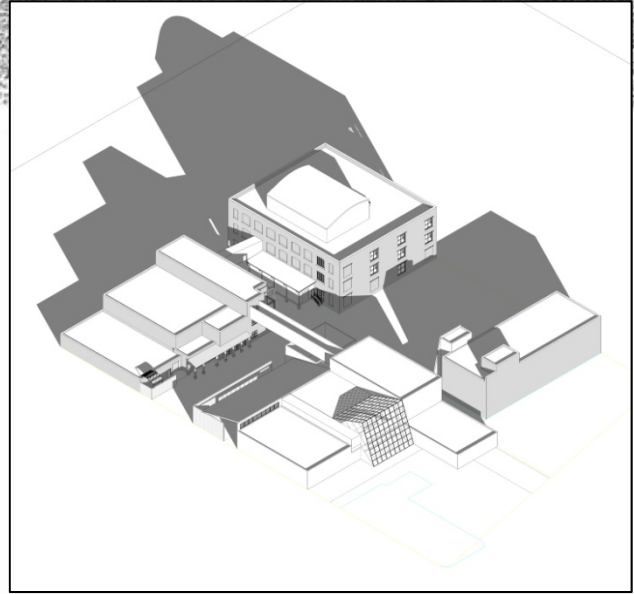
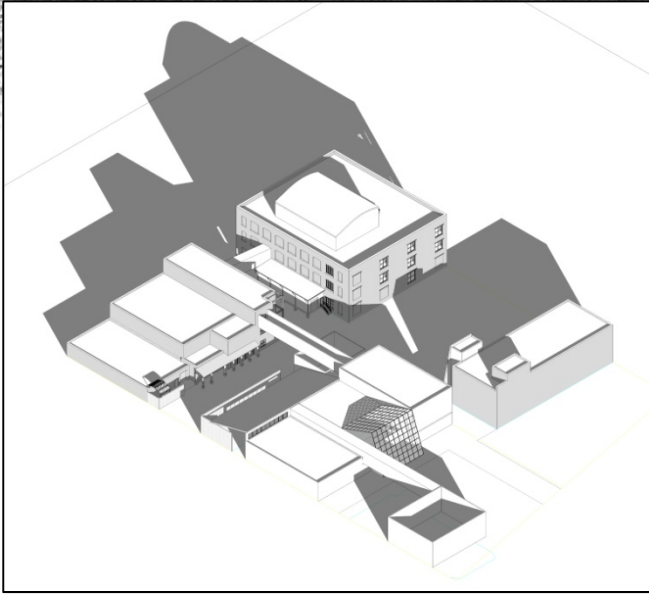
Summer Solstice– 9 am



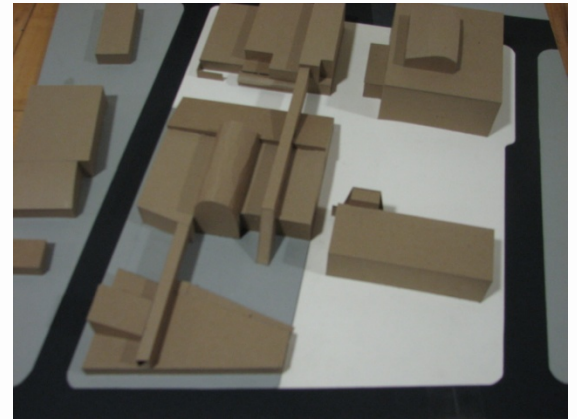
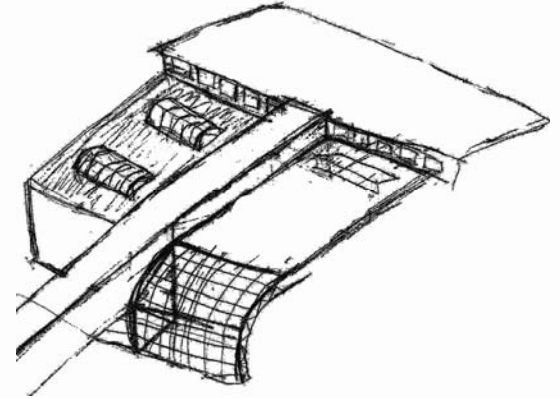
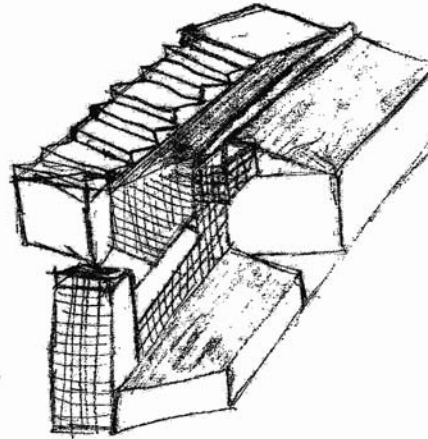
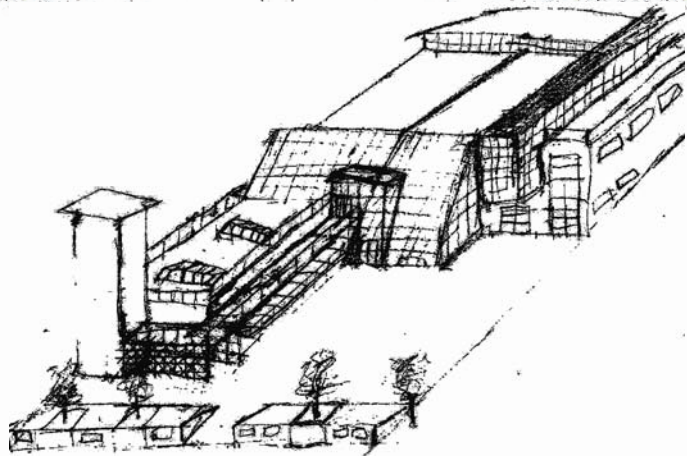
Summer Solstice– 12 am



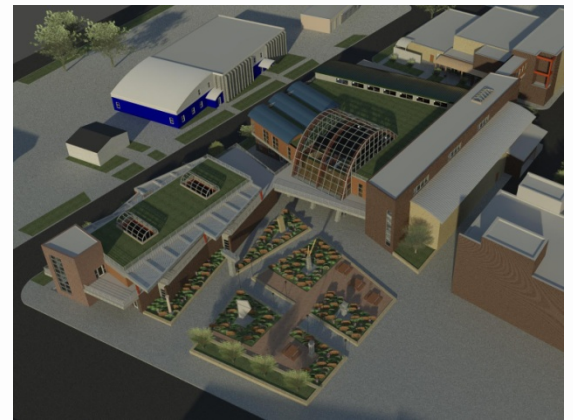
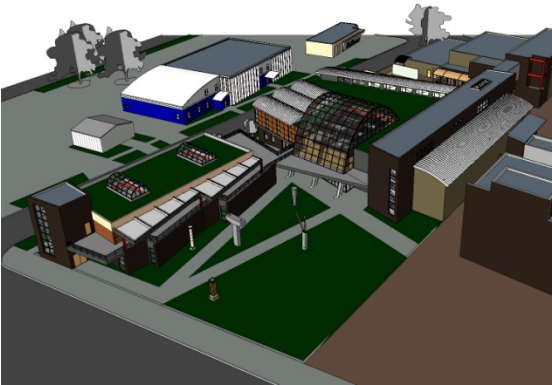
Summer Solstice– 3 am



Early Concepts



Process Sketches/Models

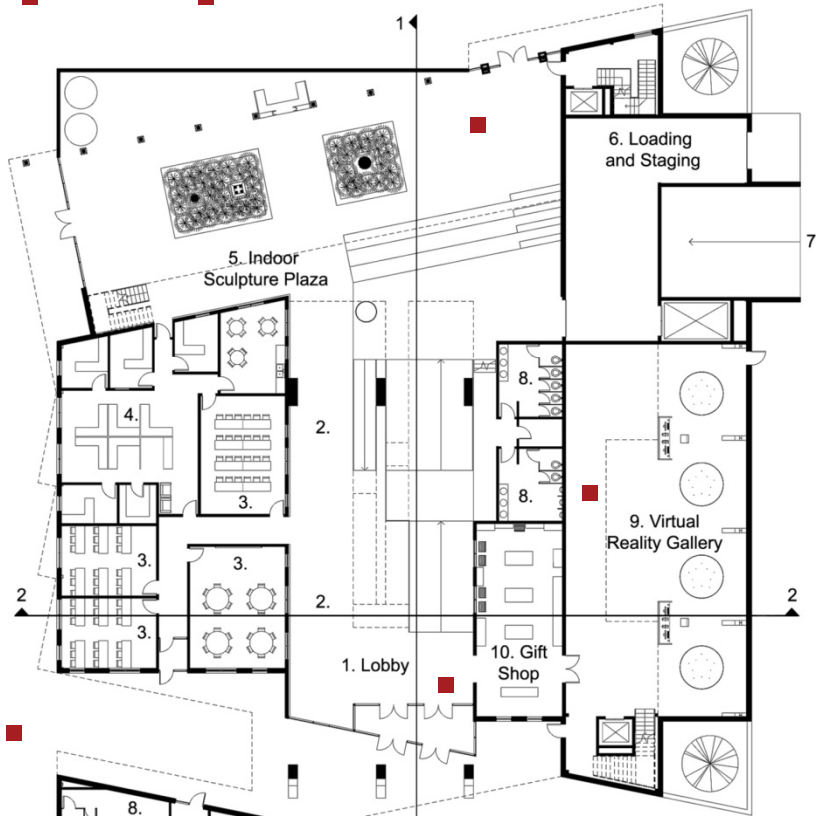


Process Sketches/Models



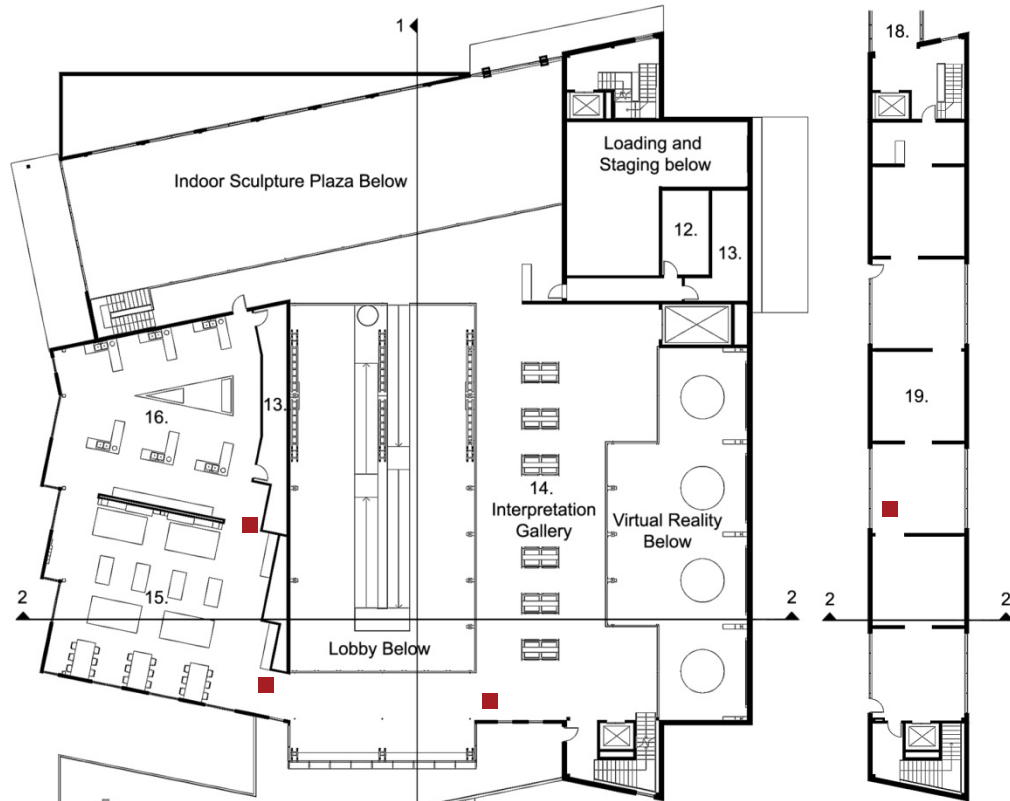
Site Plan

To Plans



First Floor

- 1. Lobby
- 2. Temporary Exhibition Space
- 3. Classroom/Meeting Space
- 4. Office Space
- 5. Indoor Sculpture Plaza
- 6. Loading and Staging
- 7. Garage Entrance
- 8. Bathrooms
- 9. Virtual Reality Gallery
- 10. Gift Shop
- 11. Multi-Use Space



Second Floor

- 12. Security
- 13. Storage
- 14. Interpretation Gallery
- 15. Form Gallery
- 16. Material Gallery
- 17. Outdoor Patio



Third Floor

- 18. Skywalk
- 19. Light Quality Gallery

To Section One
To Section Two



Entrance Perspective

[Back to Plans](#)



Southwest Perspective

[Back to Plans](#)



Northwest Perspective

[Back to Plans](#)



Altered Mural Wall

[Back to Plans](#)



Lobby Entrance

[Back to Plans](#)



Indoor Sculpture Plaza

[Back to Plans](#)



Multi-Use Space

Back to Plans



Outdoor Walkway

[Back to Plans](#)







[Material Gallery](#)

[Back to Plans](#)



[Virtual Reality Gallery](#)

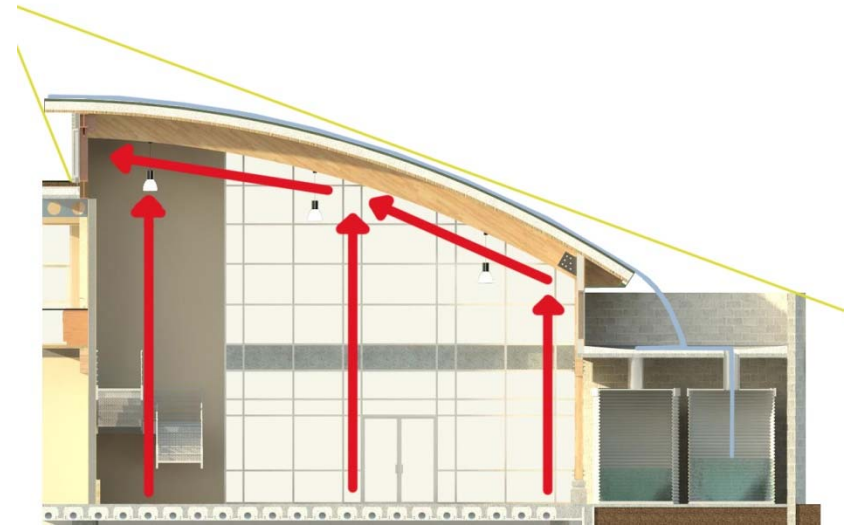
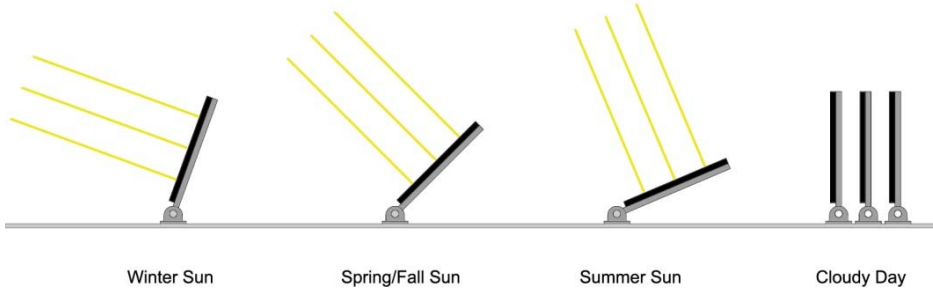
[Back to Plans](#)



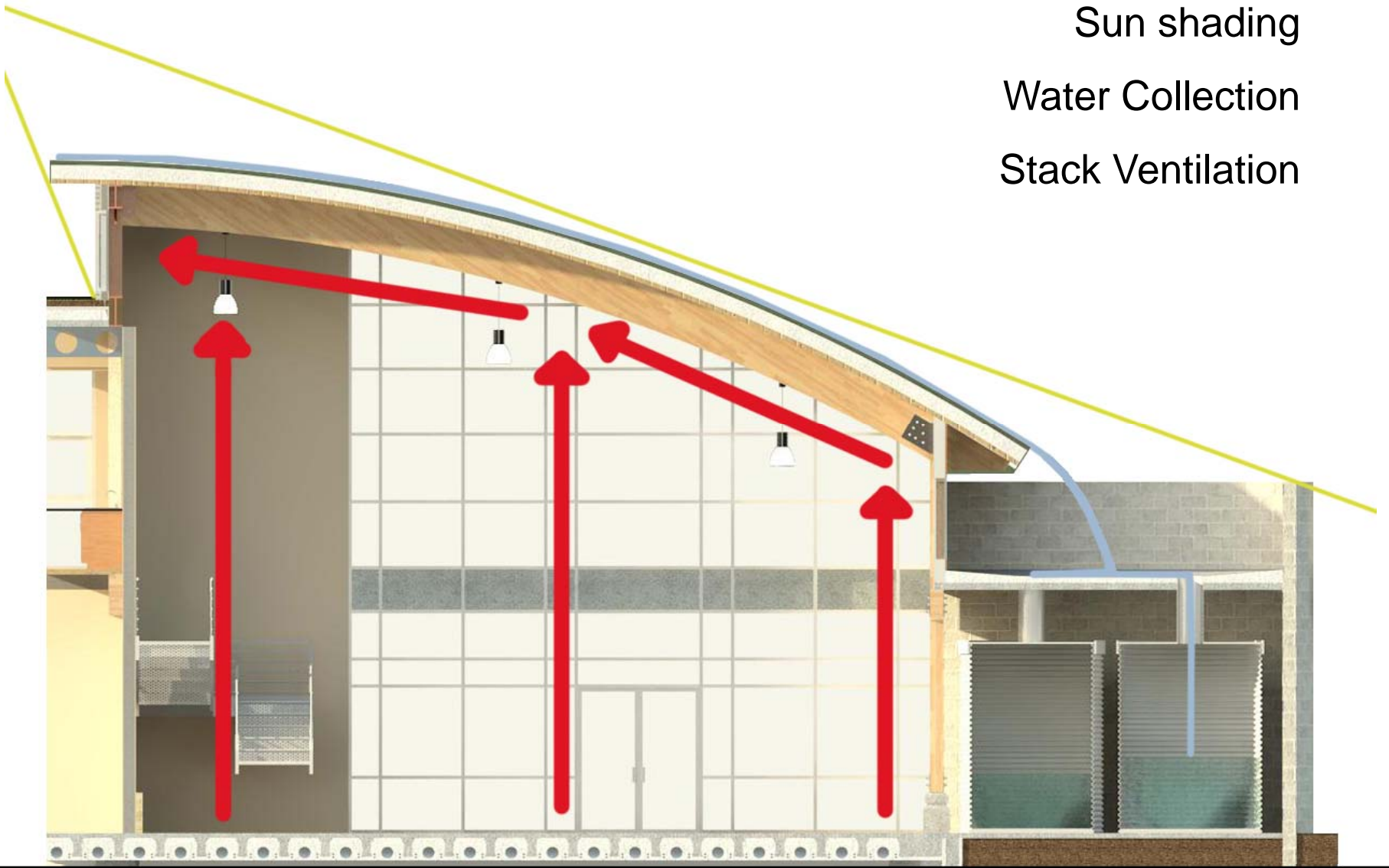
Light Quality Gallery

[Back to Plans](#)

Solar Panel/Sunshade Configurations

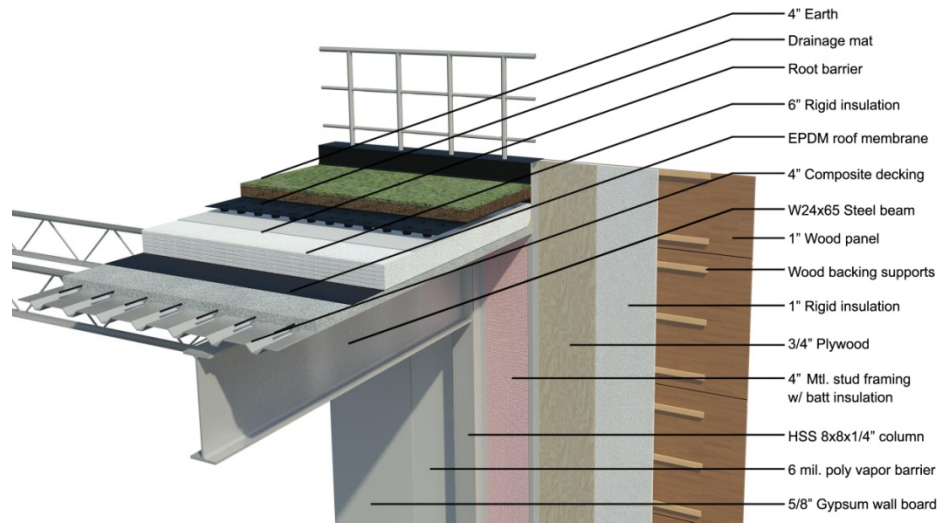
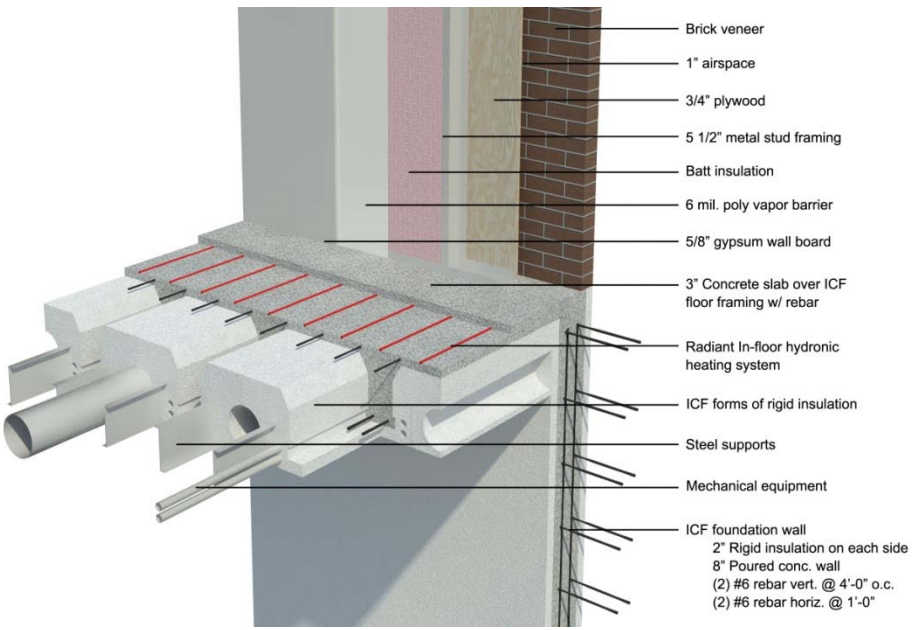


Sun shading
Water Collection
Stack Ventilation



Passive Strategies

Back to Section One





South Perspective

Any Questions?

