

PROBLEM STATEMENTS:

WHAT IS THE RELATIONSHIP OF PHYSICAL, SOCIAL, AND EMOTIONAL ATTRIBUTES IN A DESIGN?

- DESIGN IS COMBINATION OF A COMPLETE BUILDING AND SOMETHING ELSE
- IN DEPTH STUDY ON HOW FEELINGS AND EMOTIONS ARE PORTRAYED AND HOW THESE FEELINGS AND EMOTIONS DICTATE HOW ONE MOVES AND DESIGNS.

WHAT IS THE CORRELATION BETWEEN PHYSICAL, SOCIAL, AND EMOTIONAL ATTRIBUTES?

PROJECT TITLE

REHABILITATION THROUGH ENVIRONMENTAL ATTRIBUTES

SPACES

GENERAL SPACES

WAITING ROOM	- 250 sq.ft.
SOCIAL AREA	- 900 sq.ft.
MULTIPURPOSE	- 2000 sq.ft.
CAFETERIA	- 2000 sq.ft.

AQUA THERAPY DEPARTMENT

CHANGING	- 500 sq.ft.
THERAPY POOL	- 2000 sq.ft.

GENERAL SUPPORT SPACES

MECHANICAL	- 1200 sq.ft.
CIRCULATION	- 4000 sq.ft.
COMP. SUPPORT	- 1000 sq.ft.
RECEIVING	- 200 sq.ft.
JANITORIAL (4)	- 600 sq.ft. (150)
LINEN STORAGE	- 200 sq.ft.
STAFF LOUNGE	- 300 sq.ft.
OUTDOOR STORAGE	- 500 sq.ft.

SPORTS MEDICINE DEPARTMENT

OFFICES (3)	- 300 sq.ft. (100)
EXERCISE	- 600 sq.ft.
EXAMINATION (6)	- 540 sq.ft. (90)

BACK THERAPY DEPARTMENT

OFFICES (2)	- 200 sq.ft. (100)
EXERCISE	- 400 sq.ft.

ADMINISTRATION DEPARTMENT

RECEPTION	- 150 sq.ft.
ACCOUNTING	- 200 sq.ft.
DIR. OFFICE.	- 200 sq.ft.
ASS. DIR. OFFICE	- 150 sq.ft.
CONFERENCE	- 200 sq.ft.
OFFICE (10)	- 1000 sq.ft. (100)

OCCUPATIONAL DEPARTMENT

OFFICES (2)	- 200 sq.ft. (100)
LIBRARY	
TRAINING	- 1500 sq.ft.

MEDICAL DEPARTMENT

CONSULTANTS OFFICE (3)	- 600 sq.ft. (200)
EXAMINATION (8)	- 800 sq.ft. (100)
DIAGNOSTICS (8)	- 800 sq.ft. (100)
LABATORY	- 200 sq.ft.

NEUROLOGICAL DEPARTMENT

OFFICES (3)	- 300 sq.ft. (100)
LIBRARY	- 200 sq.ft.
MEDITATION	- 200 sq.ft.
TREATMENT (6)	- 600 sq.ft. (100)

PHYSICAL THERAPY DEPARTMENT

HEAD THERAPIST	- 150 sq.ft.
THERAPIST (8)	- 300 sq.ft. (100)
TREATMENT (12)	- 1200 sq.ft. (100)
UTILITY	- 100 sq.ft.
EXERCISE	- 1200 sq.ft.

CHARACTERISTICS OF THE SITE

ROLLING
SHARP INCLINES/DECLINES
WOODED (SHRUBS+TREES)
UNLIMITED
WILDLIFE
FREEDOM
NATURAL



REHABILITATION

- To restore to a condition of good health, ability to work,
- To restore to good condition, operation, or management.
- To reestablish the good reputation of.
- To restore formally to former capacity, standing, rank, rights, or privileges.

Synonyms

SALVAGE
RESTORE
RECONDITION
RECONSTRUCT
REFURBISH

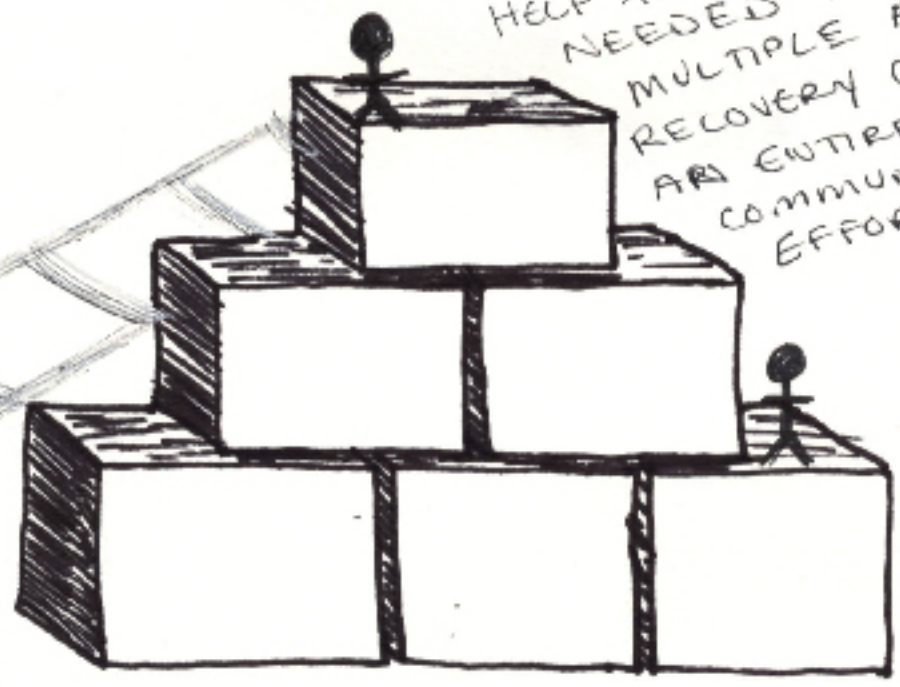
CONTEXT DESCRIPTIVES

LADDER
HIERARCHY
STEPPING STONES
PEAKS AND VALLEYS
LEVELING

TREATMENT DONE ON AN INDIVIDUAL BASIS IS USUALLY LONG AND DRAWN OUT COMPARED TO THE HELP OF OTHERS WHEN IT COMES TO SUPPORT.



NEED HELP TO GET TO THE NEXT LEVEL. RECOVERY IS NOT A SINGLE INDIVIDUAL IDEA, HELP AND SUPPORT IS NEEDED FROM MULTIPLE AREAS. RECOVERY CAN BE AN ENTIRE COMMUNITY EFFORT.



TREATMENT OF AN INDIVIDUAL IS SEEN THROUGH THE COOPERATION OF SEVERAL.

BRIDGES NEED TO BE DEVELOPED IN ORDER TO GET FROM ONE STEPPING STONE TO THE NEXT. BRIDGES IN THIS CASE ARE THE METHODS OF TREATMENT. INDIVIDUALS ARE ABLE TO DEVELOP WAYS OF TREATING AND FIXING THEMSELVES. BUT GROUPS OF INDIVIDUALS HAVE GREATER SUCCESS WHEN IT COMES TO THESE SITUATIONS.



DIFFERENT LEVELS OF TREATMENT AND TO THE RECOVERY PROCESS. EACH LEVEL IS A DIFFERENT METHOD OF TREATMENT AND TAKES A DIFFERENT AMOUNT OF TIME. THE TRANSITION BETWEEN

LEVELS OF TREATMENT MAY BE EASY OR DIFFICULT, DEPENDS ON WHAT THE LEVELS ARE AND THE METHOD OF PASSING.

HELP IS IN MANY FORMS WHEN IT COMES TO SUPPORT.

THERE IS THE INDIVIDUAL, FAMILY, FRIENDS, DOCTORS, AND ~~STAFF~~ STAFF OF THE TREATMENT FACILITY.

THE ACT OF TREATMENT IS A GROUP EFFORT, AND NEEDS TO BE APPROACHED THAT WAY.

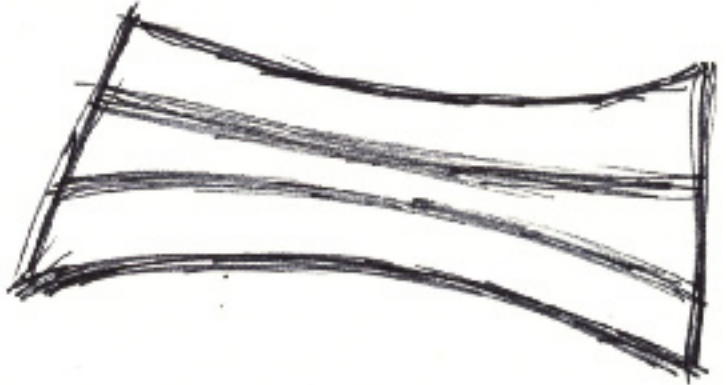
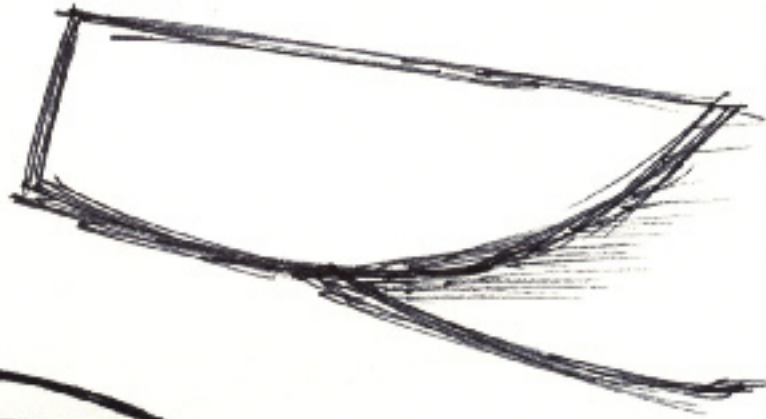


BRANCHING OUT AND CREATING A NETWORK OF SUPPORT AND HELP. CREATING A SAFETY NET CREATES ~~WORKS~~ A HIGHER SUCCESS RATE. EVERY BRANCH/LINE CAN BE SEEN AS A DIFFERENT INDIVIDUAL, IN THE HEALING PROCESS. HEALING ALL ASPECTS OF AN INDIVIDUAL IS A GROUP PROJECT IN HELPING THOSE AFFECTED BY IMPAIRMENTS TO BECOME A FUNCTIONAL MEMBER OF A COMMUNITY SOCIETY.

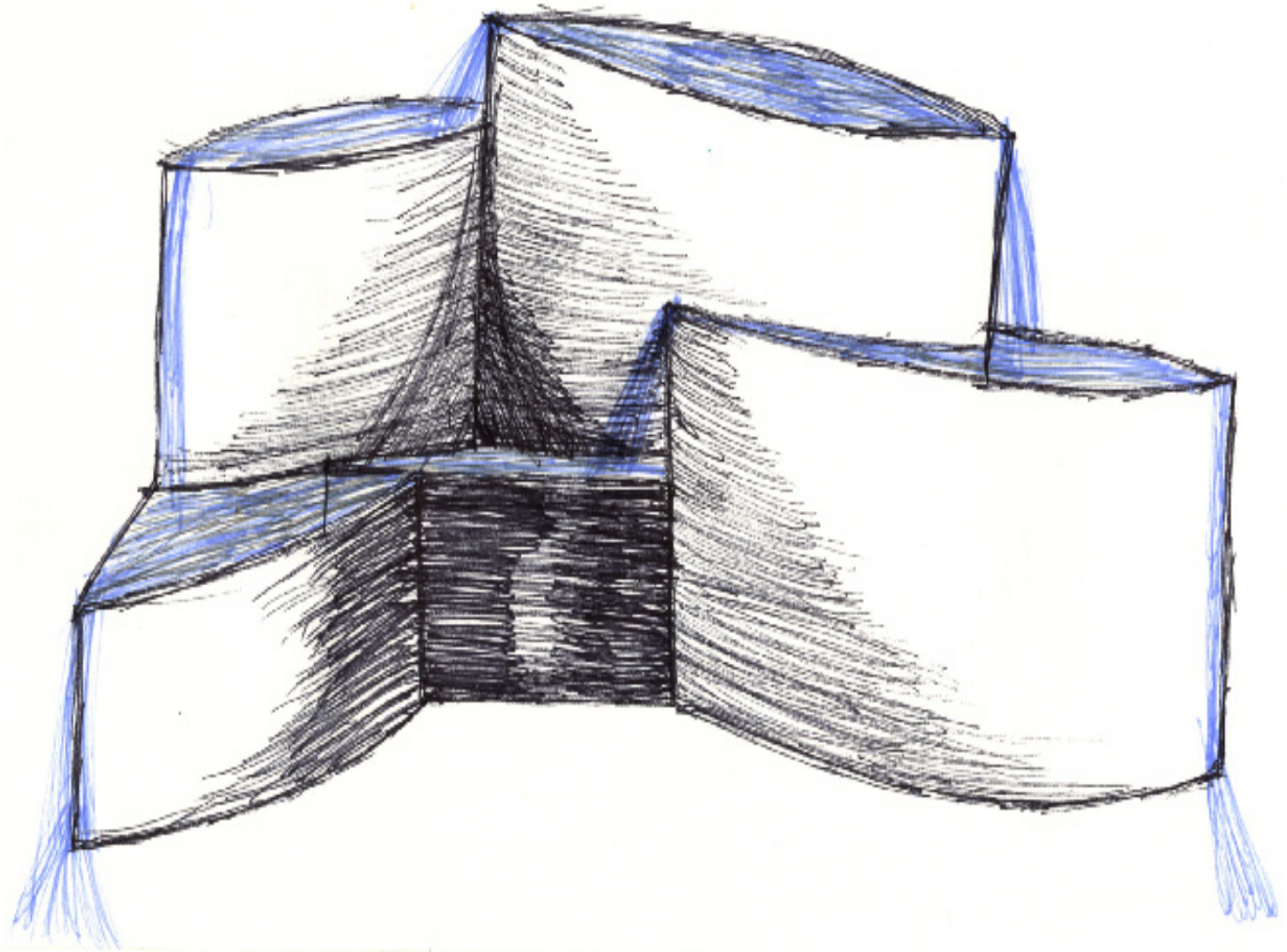
WATERFALLS

WATER FLOWING OVER THE JAGGED ROCKS WHICH HAVE BEEN SMOOTHED OVER. THE OVERALL SURFACE OF DULUTH IS VERY JAGGED DUE TO THE FORMATION AND TYPE OF HARD BEDROCK.




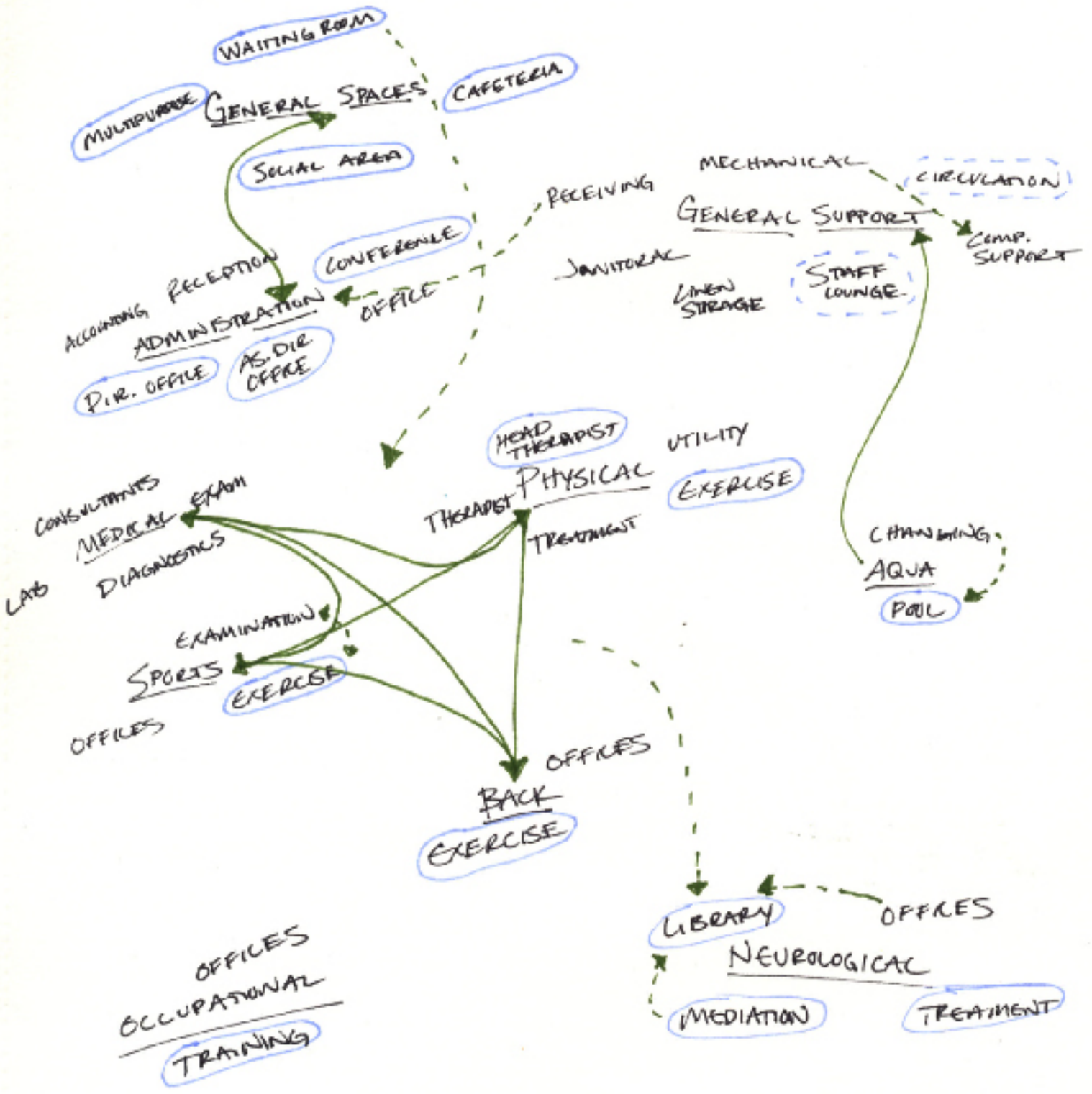






 = SOME TYPE OF ENVIRONMENTAL ACCESS

 = SOME TYPE OF CONNECTION



AQUA

OCC

NEURO

BACK

PHYSICAC

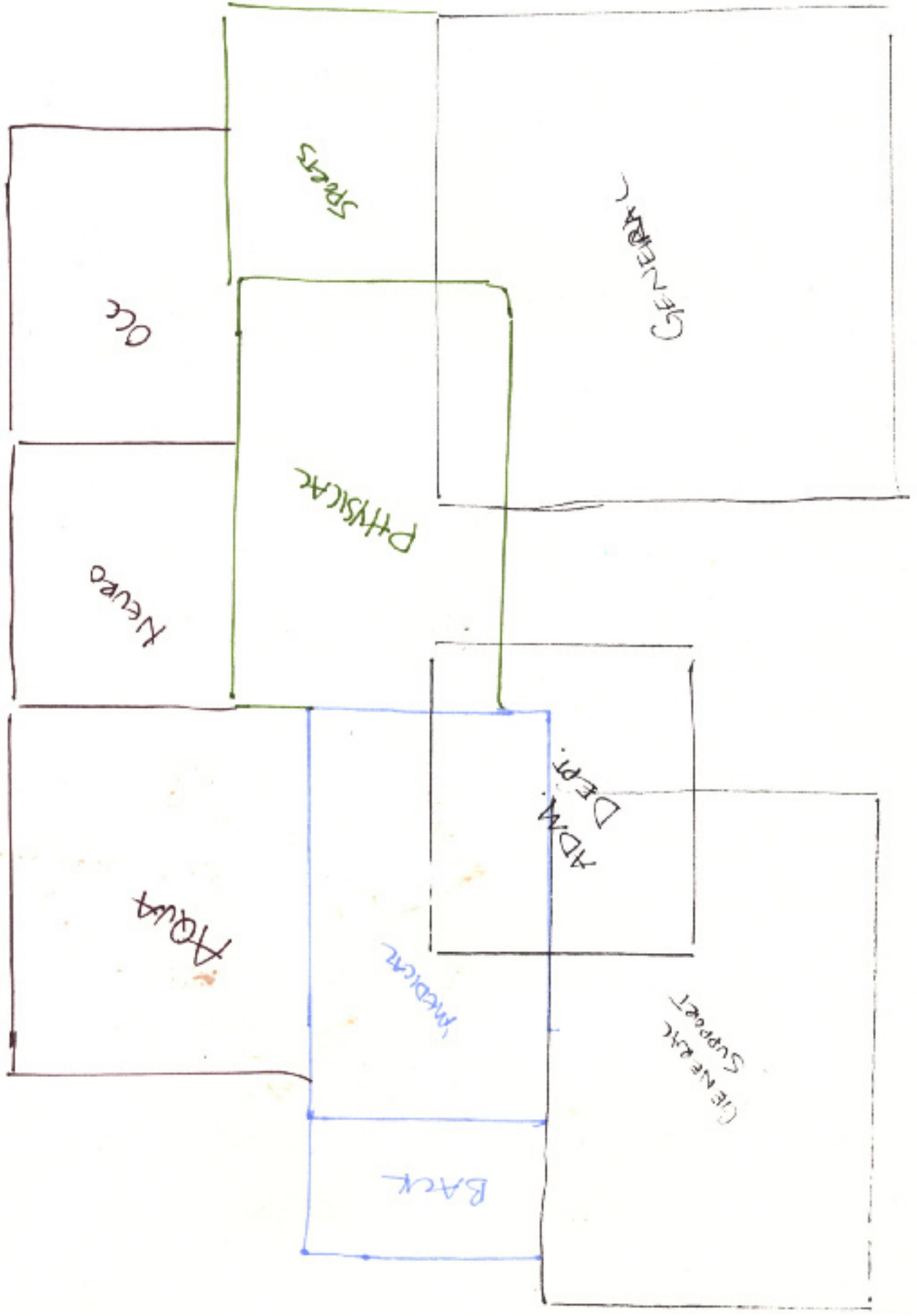
MEDICAL

SPORTS

ADM.

GENERAL
SUPPORT

GENERAL





MATERIALS + STRUCTURE

STONE (INDIGENOUS)

- GRANITE
- ~~FIELD~~
- QUARTZ

CLEAN + CRISP

JAGGED + OFF

SLAB

[FIELD STONE
• COBBLESTONE

CURTAIN WALLS

SOUTH SIDE

PART WALL - FULL WALL

~~EARTH~~

CONCRETE

PRECAST
SITE CAST

TILE

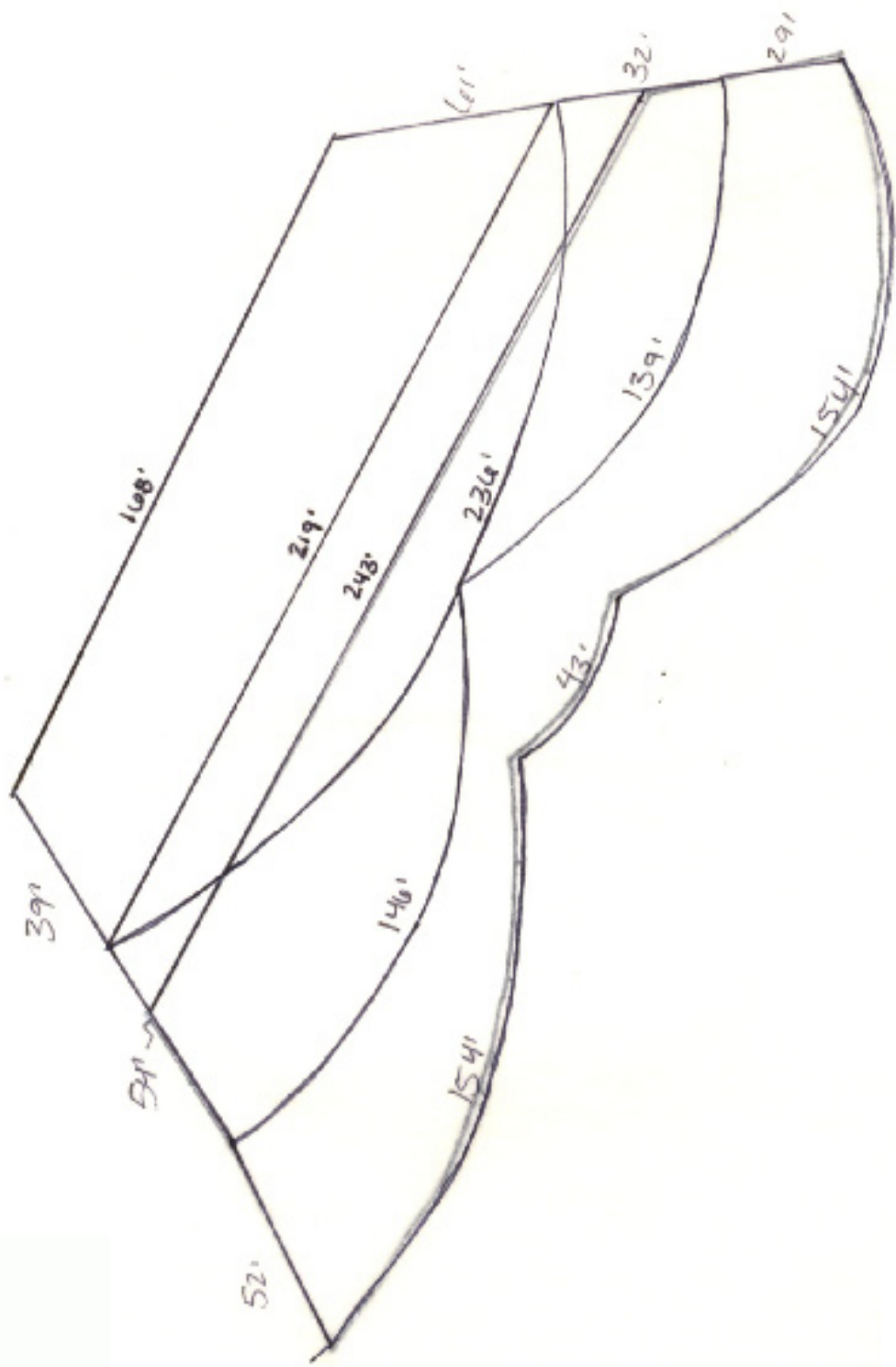
STEEL

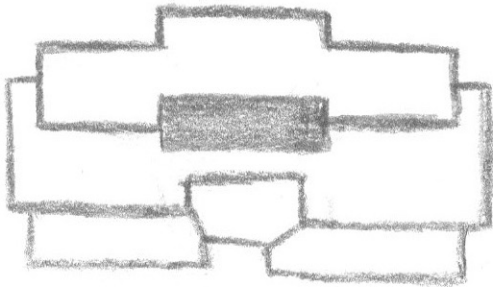
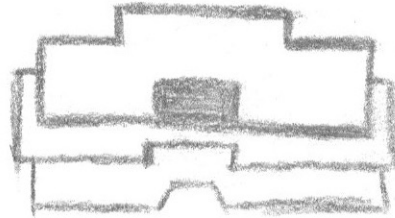
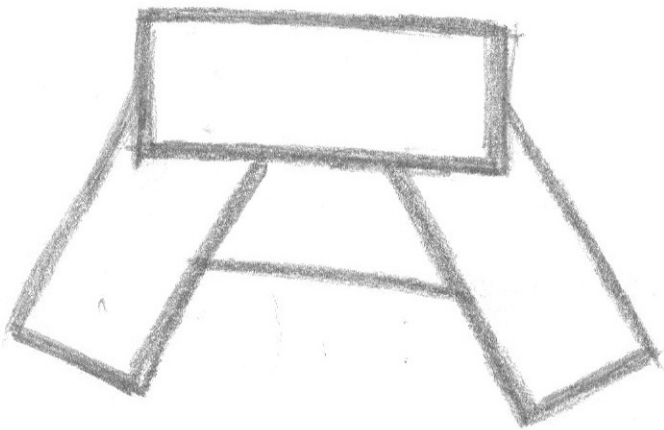
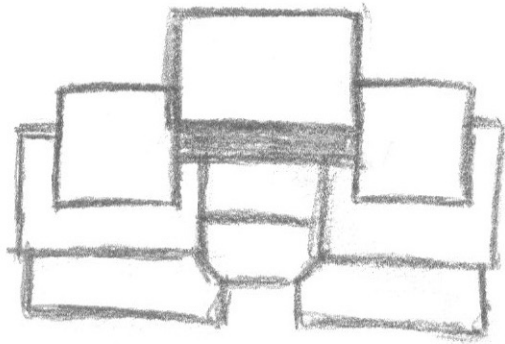
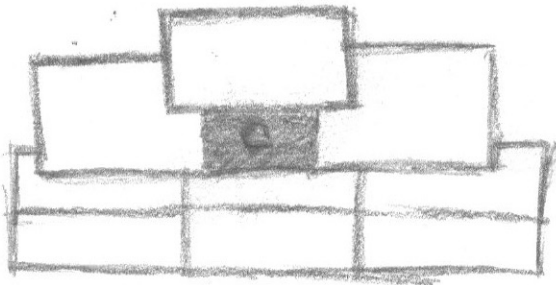
FOUNDATION

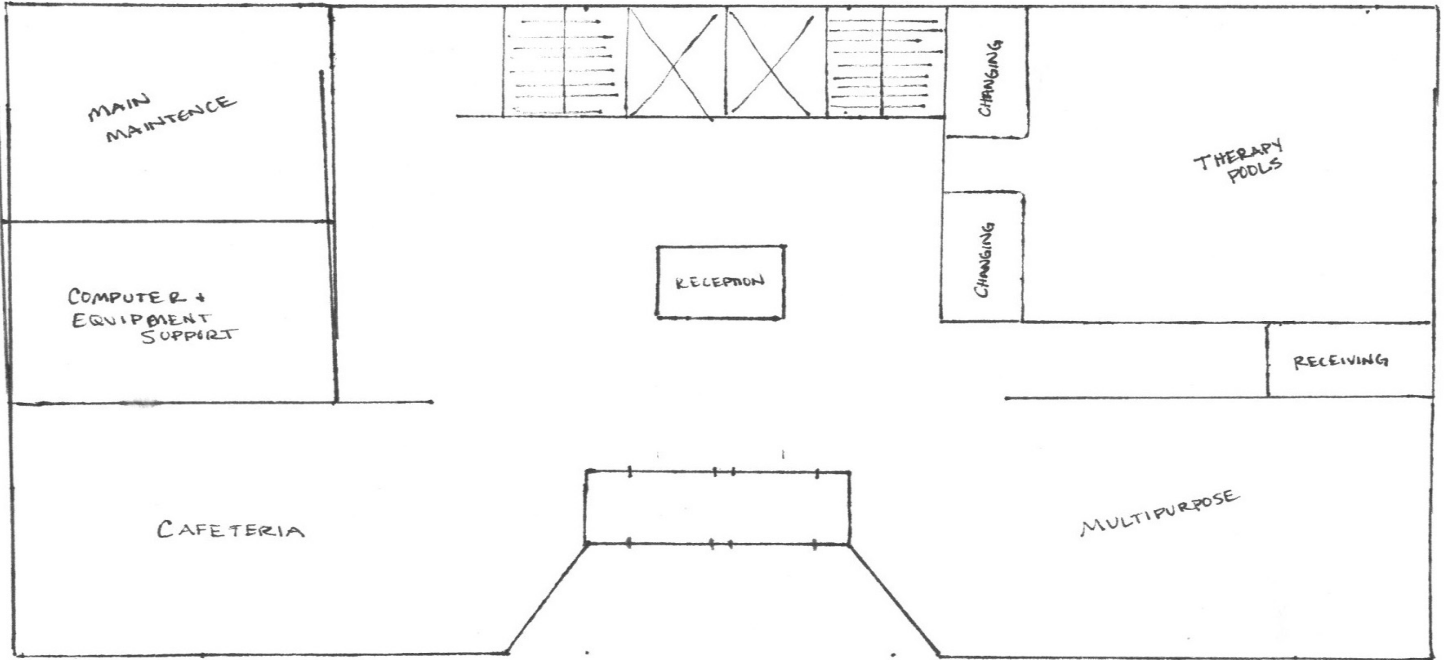
CONCRETE + BEDROCK FOUNDATION

PONDS + WATER FEATURE W/IN DESIGN?

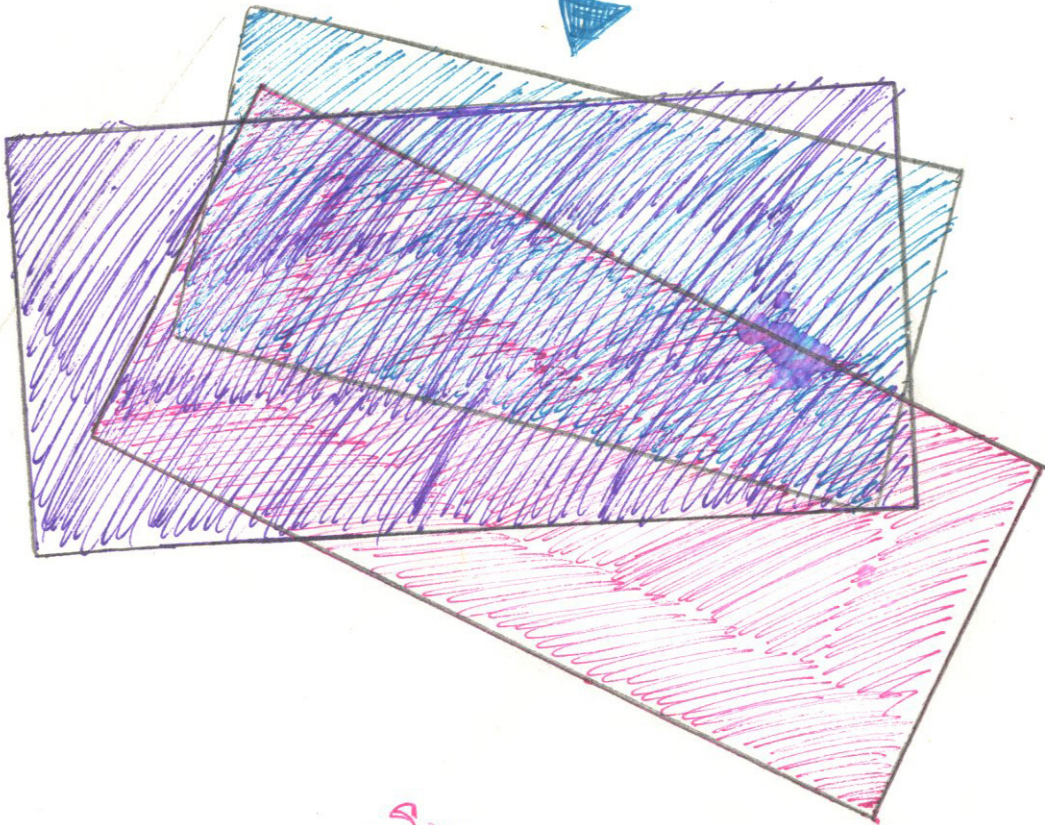
CREATING A SENSE OF WARMTH, INVITTING, + FUNCTION





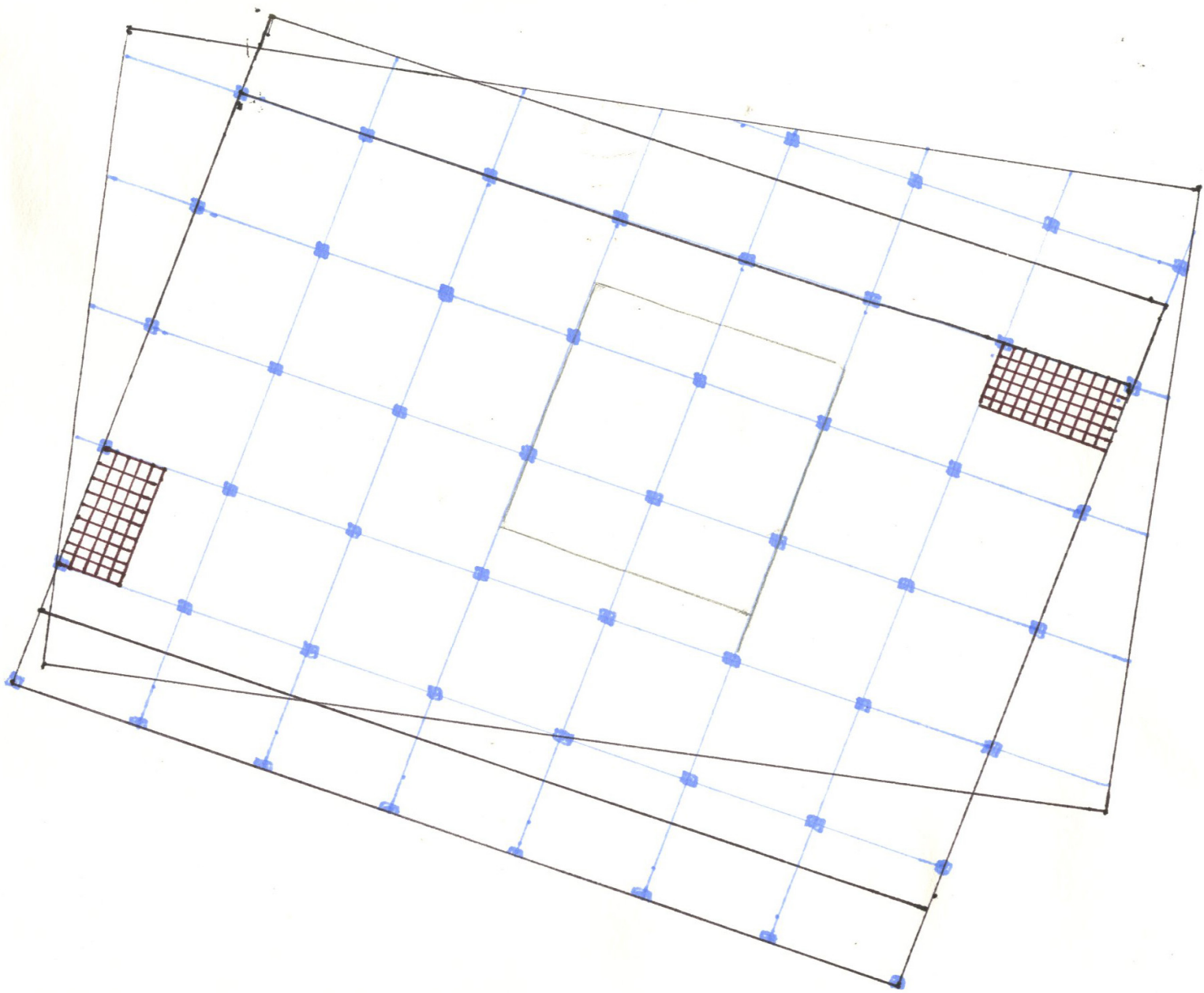


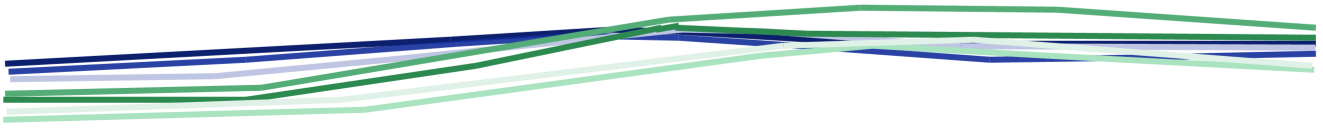
ENTRY



SOUTH





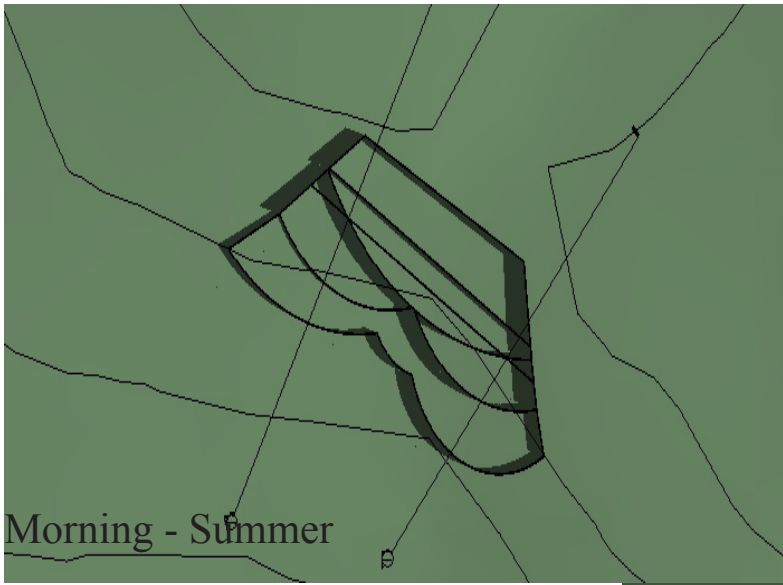


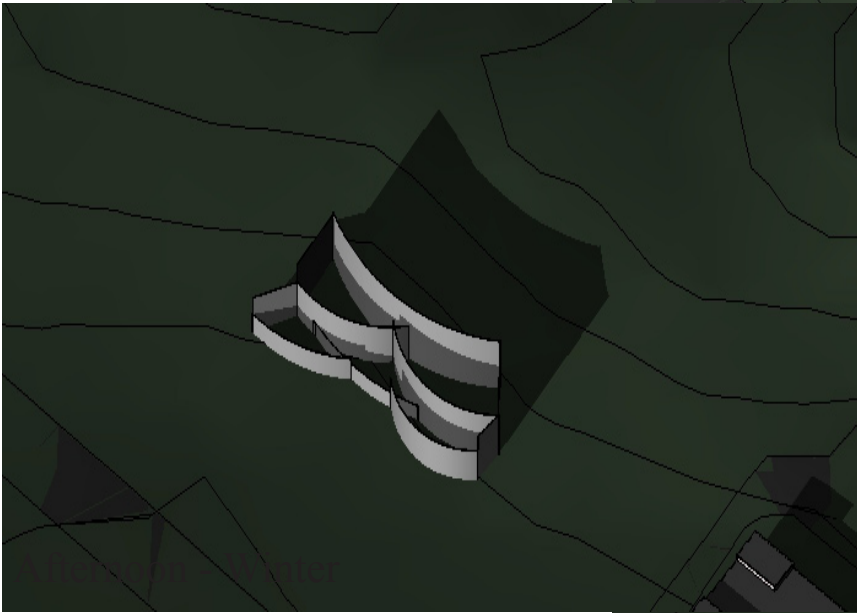
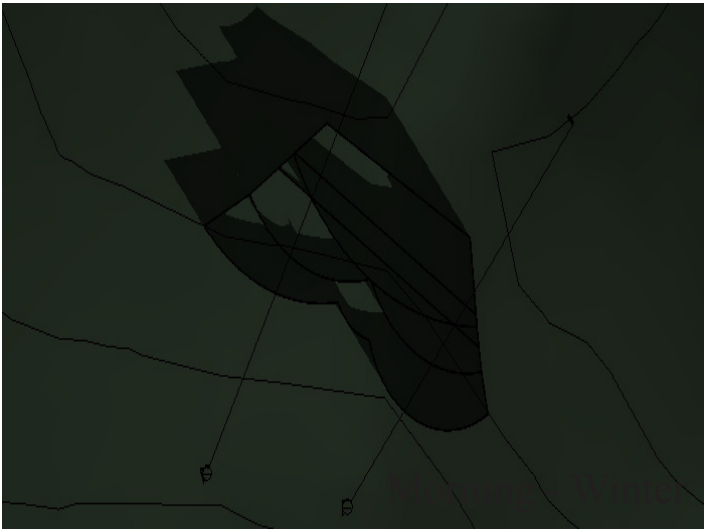
East - West Section

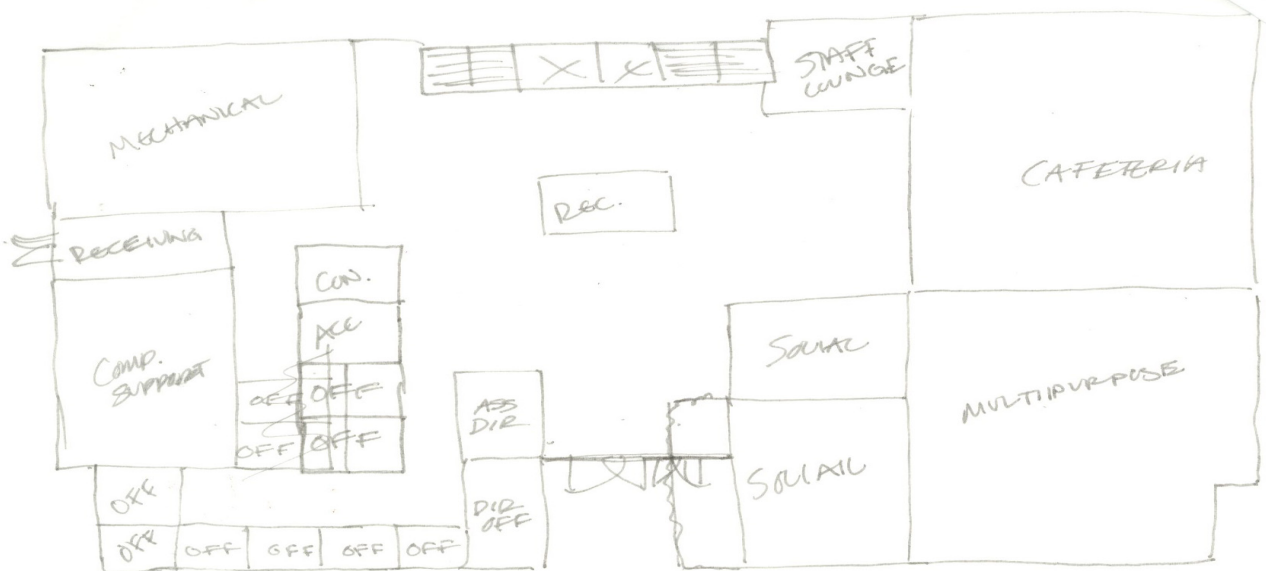
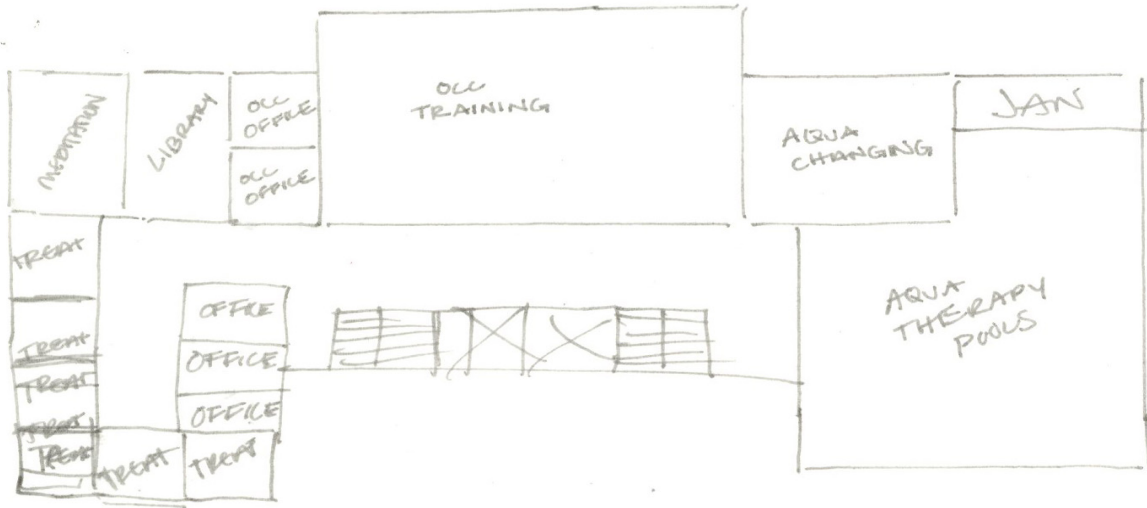


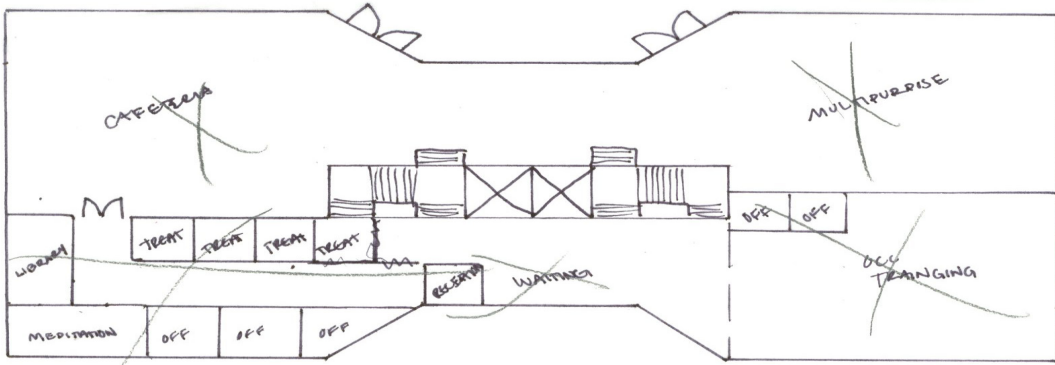
South - North Section



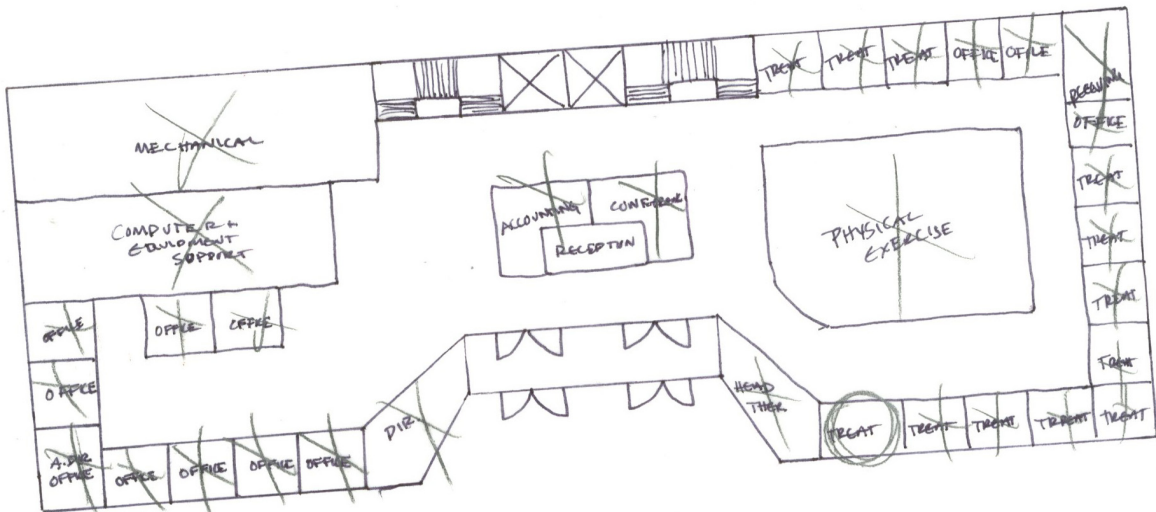
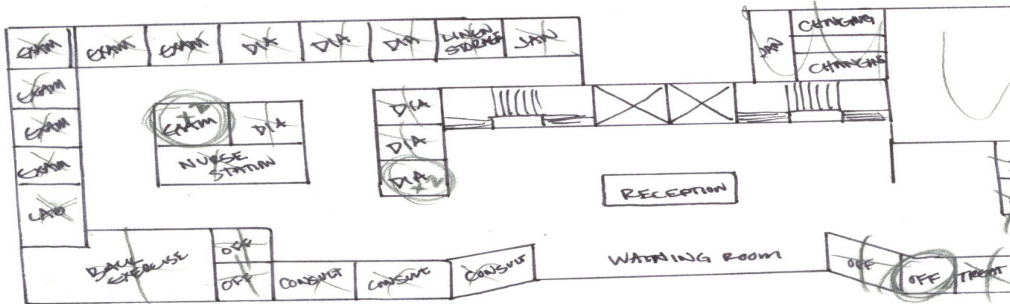


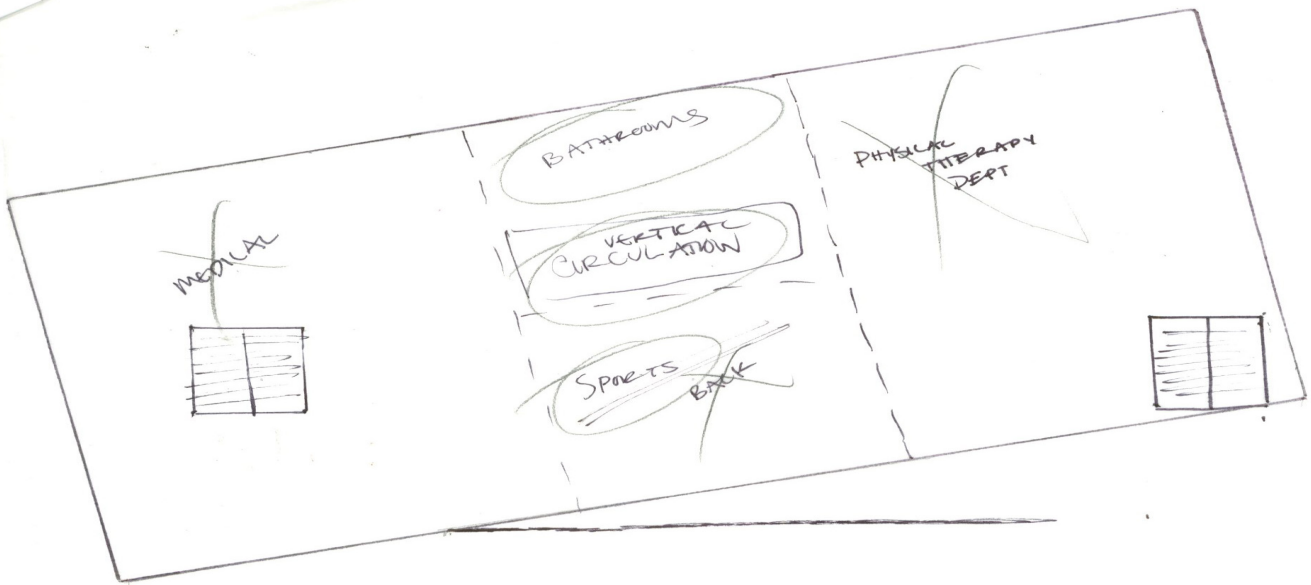
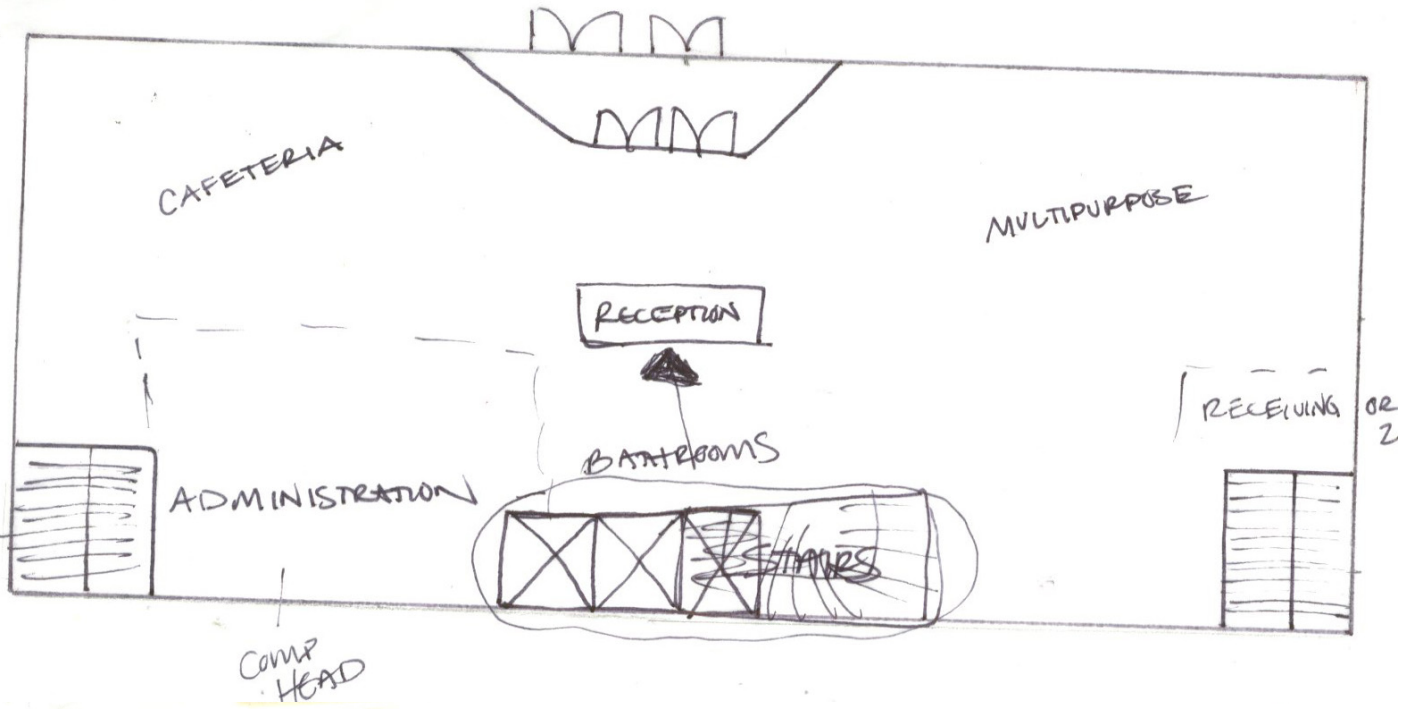


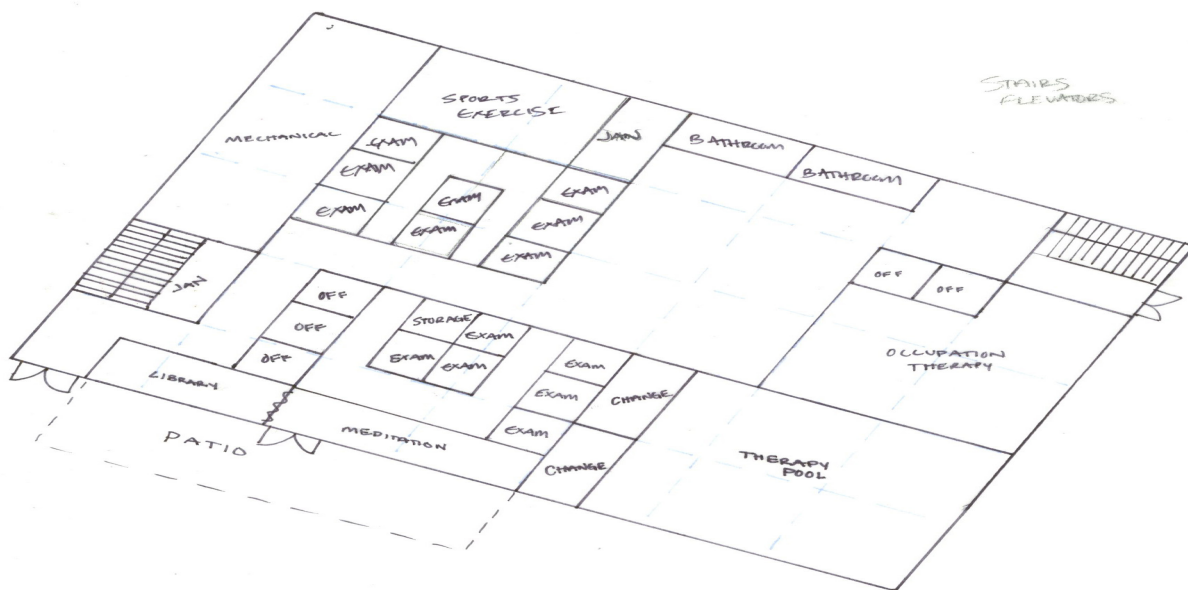
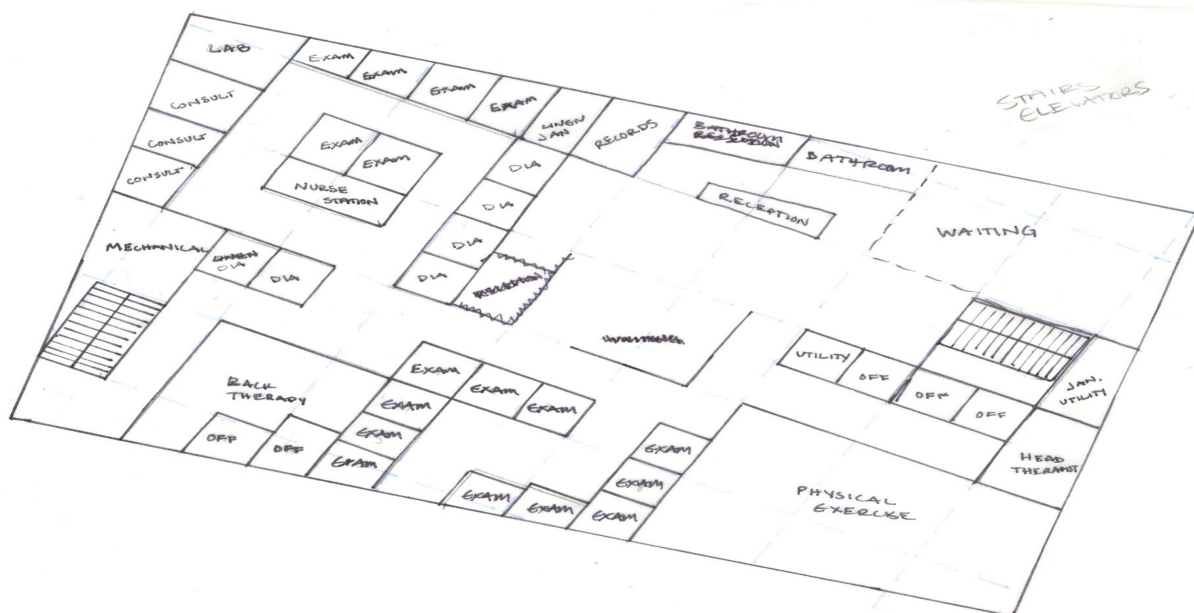
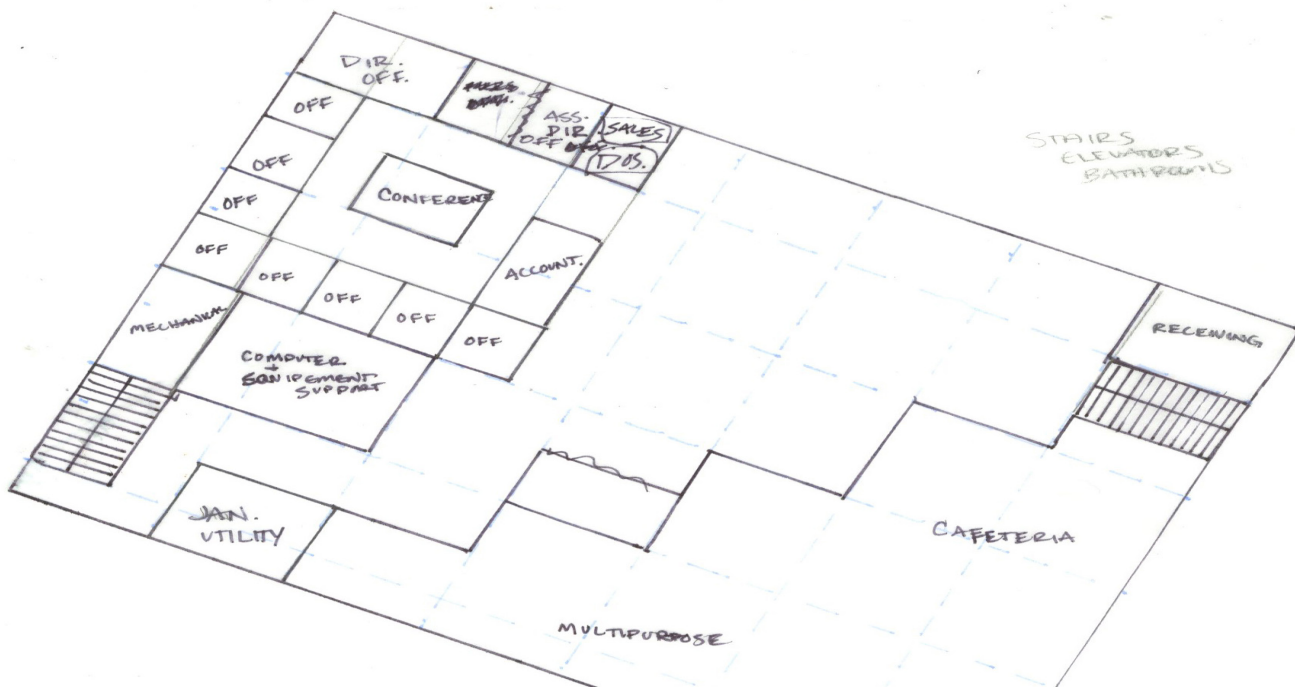




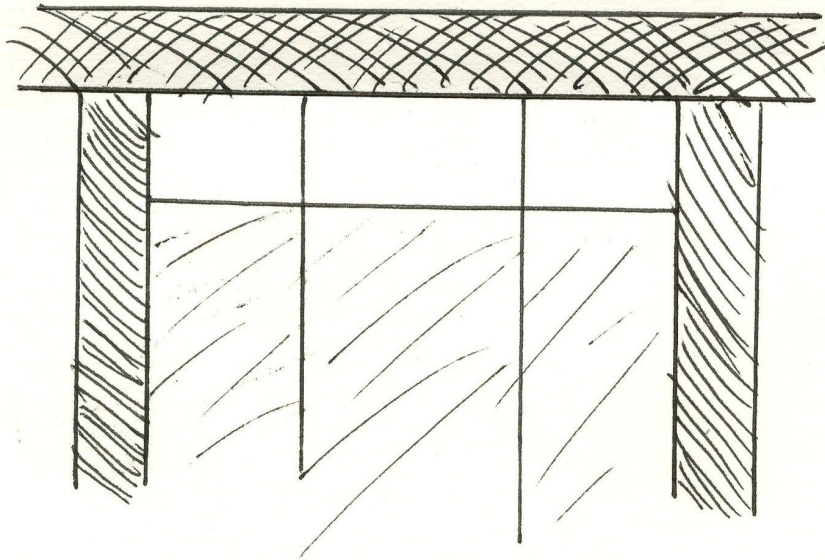
BATHROOM
EGRESS STAIRS





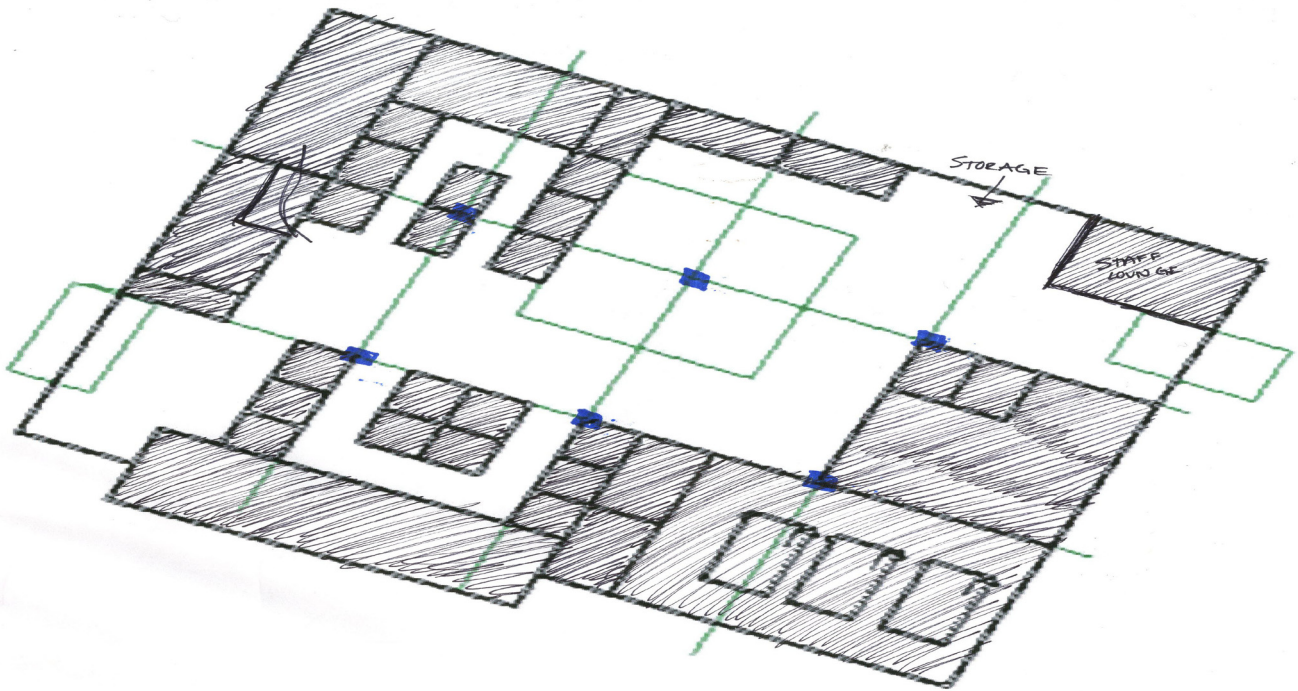
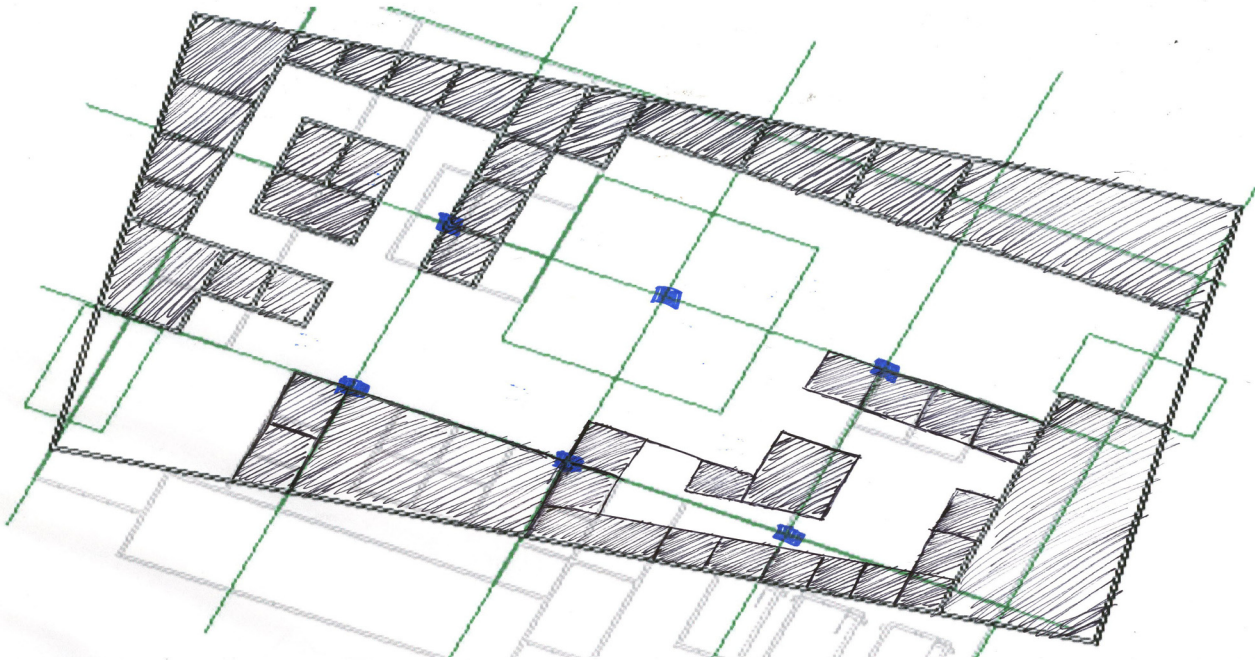
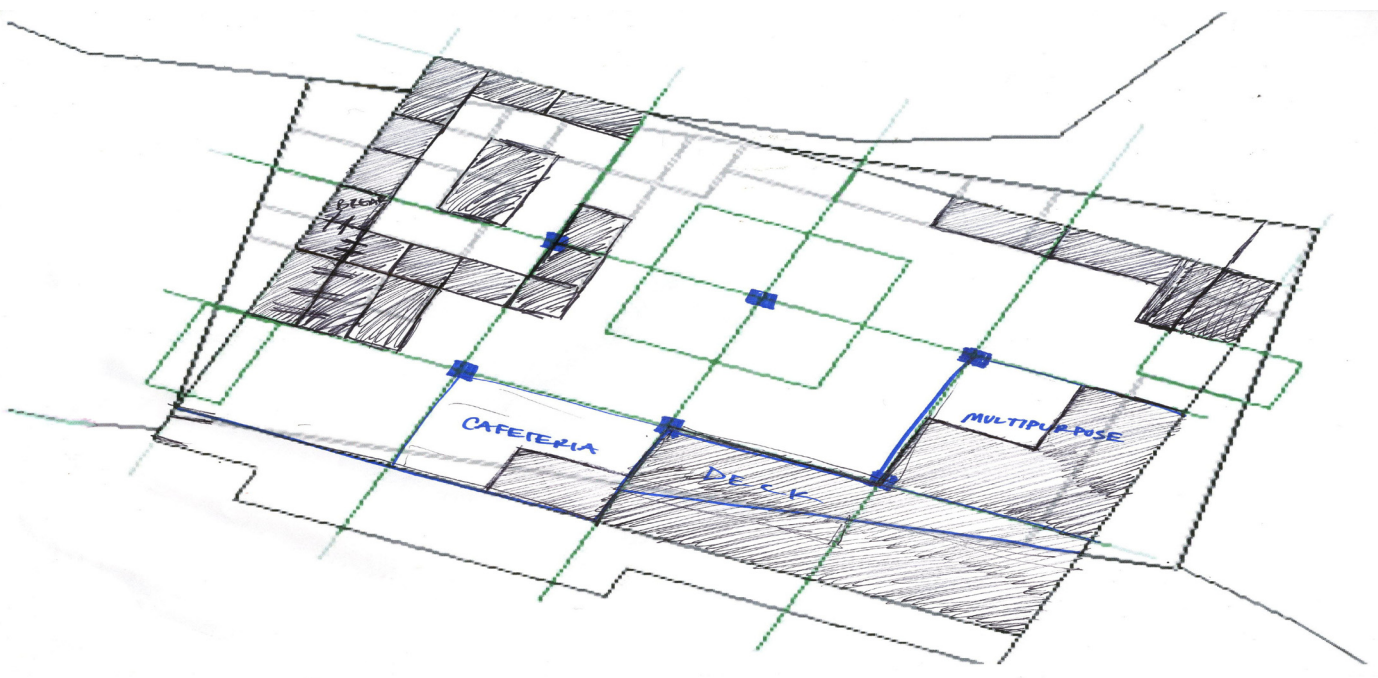


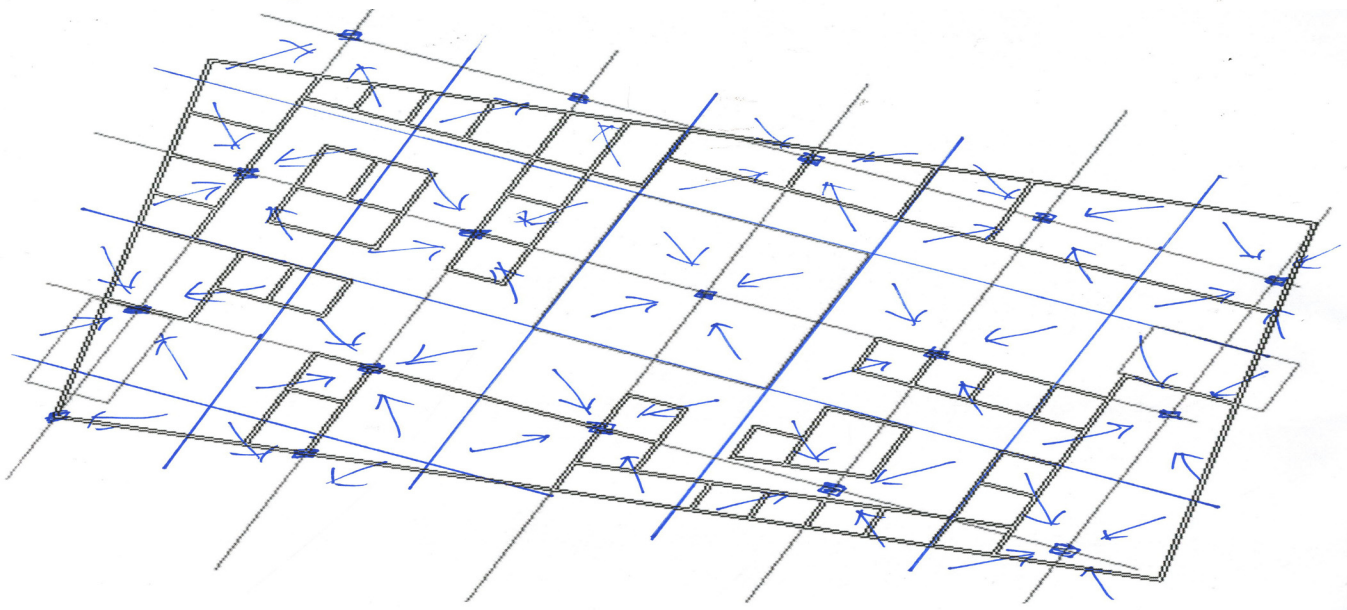
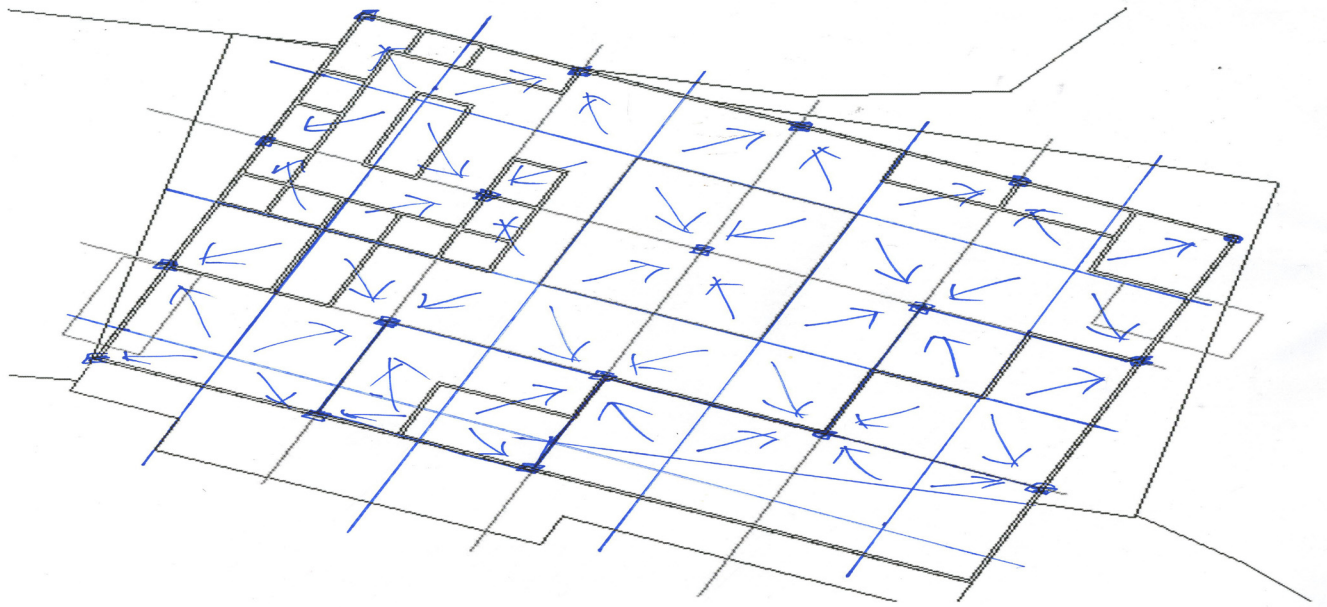
KALWALL + NANOGEEL



WORKS WITH AREAS ON EXTERIOR WITH COLUMNS.

WHAT ABOUT AREAS W/OUT COLUMNS.





• STRUCTURAL STEEL BEAMS AND GIRDERS
SPAN 40' = 20" BEAMS

STEEL FLOOR AND ROOF DECKING

• OPEN-WEB STEEL JOISTS
SPAN 40'

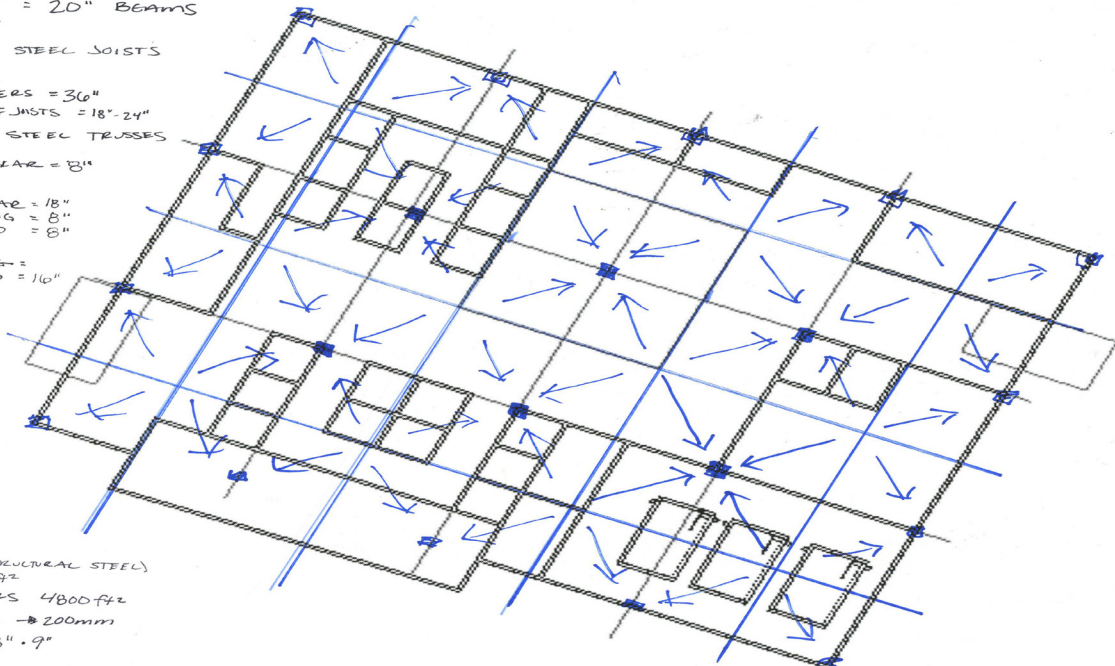
JOIST GIRDERS = 36"
FLOOR + ROOF JOISTS = 18" x 24"

• STRUCTURAL STEEL TRUSSES

SPAN 40'
TRIANGULAR = 8"

SPAN 100'
TRIANGULAR = 18"
BOULDER = 8"
PAR. CHORD = 6"

SPAN 160'
BOULDER = 16"
PAR. CHORD = 16"



COLUMNS (STRUCTURAL STEEL)
AREA 1000 FT²
↳ 3 FLOORS 4800 FT²
WB → 200mm
8" x 9"

