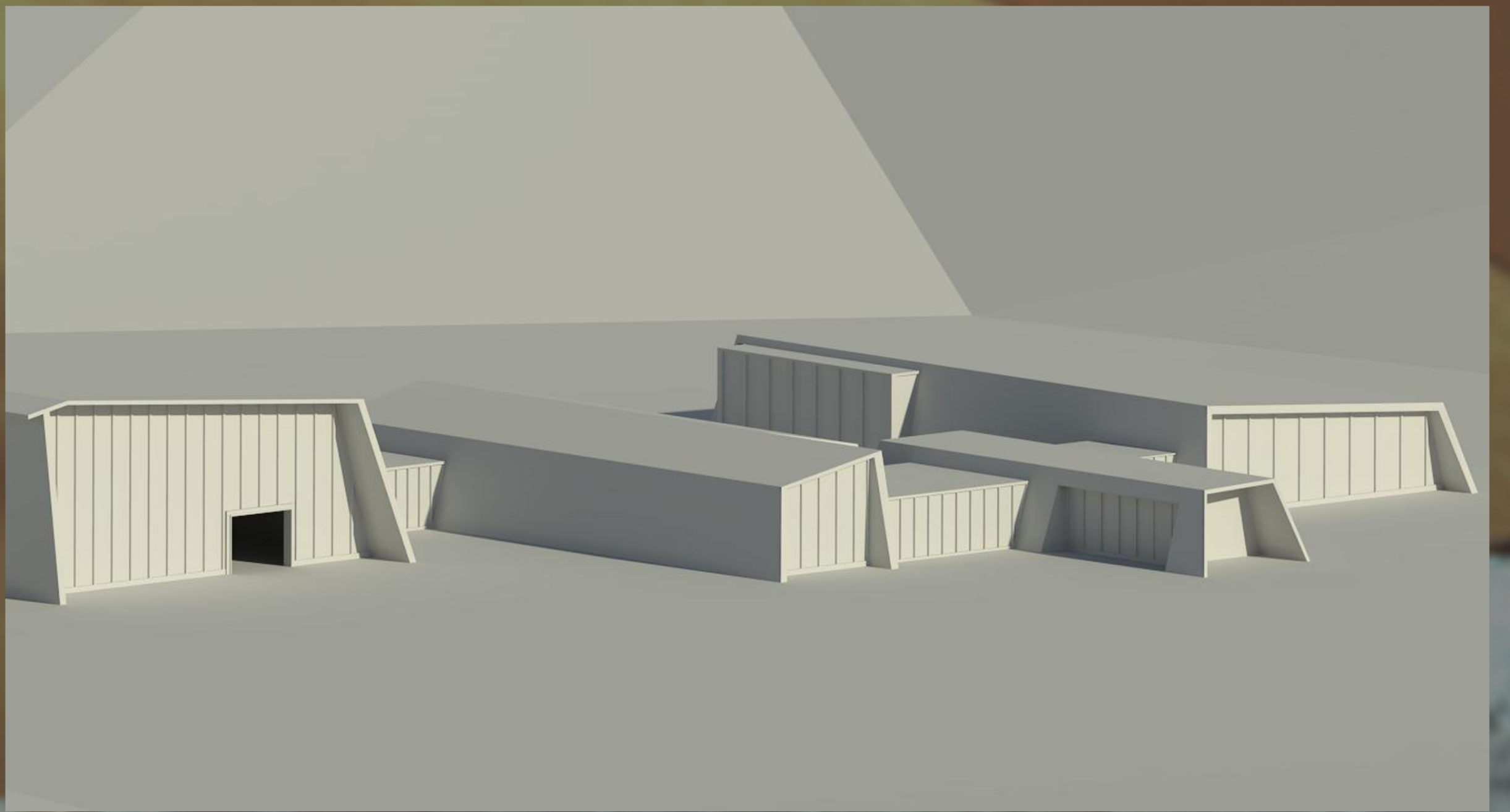


the present project was created in response to the local need for downhill skiing place.

addressed are the local condition and future development, function of this type of construction, views and orientation, access to site, local and area available materials, reuse of materials, sustainability, natural light - solar use and prevention, energy issues, embedded energy, local energy production, saving and use of energy, water use, consumption and collection, ventilation and natural convection, framing, construction and soil bearing, and many other ideas.



the goal was to create a mountain-like feel, functional and relatively inexpensive entity able to sustain and support itself.

this is considered initial study of an idea ...

from the architect

