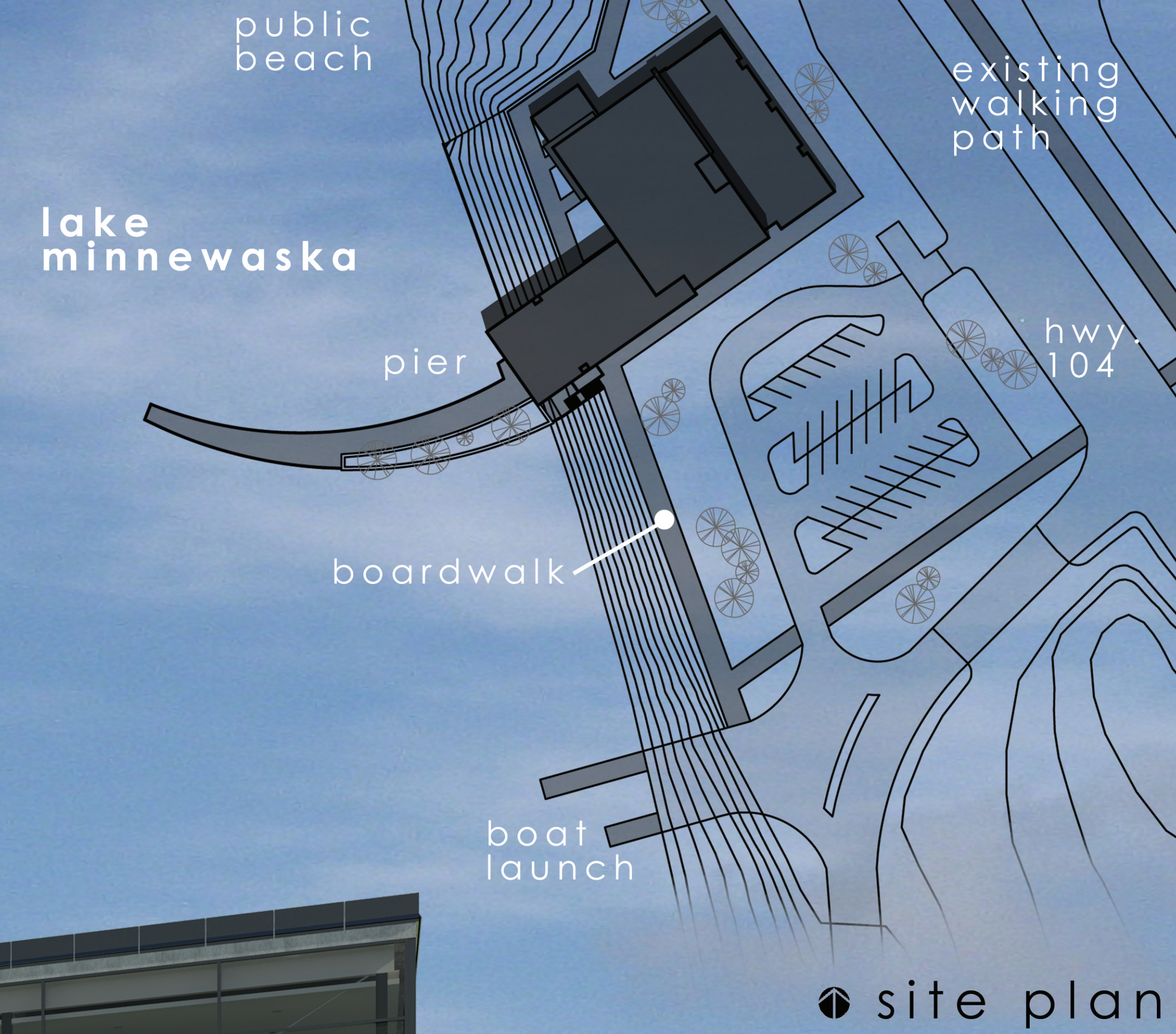


the wave

sustaining rural communities:
a mixed-use project for glenwood, minnesota



Designer: Justin Douvier
Thesis Instructor: Mark Barnhouse
ARCH 772 Design Thesis, Spring 2010
Dept. of Architecture and Landscape Architecture,
North Dakota State University
Revit 2010, AutoCad 2010, In-Design

beach perspective



- spaces:
- a. retail space
 - b. lobby
 - c. storage
 - d. hotel office
 - e. mechanical room
 - f. elevator mech.
 - g. public beach changing/toilets
 - h. beach storage
 - i. maid lounge/storage
 - j. janitor
 - k. food prep.
 - l. storage
 - m. hotel suite
- ** fan coil unit per each hotel rm



building entry



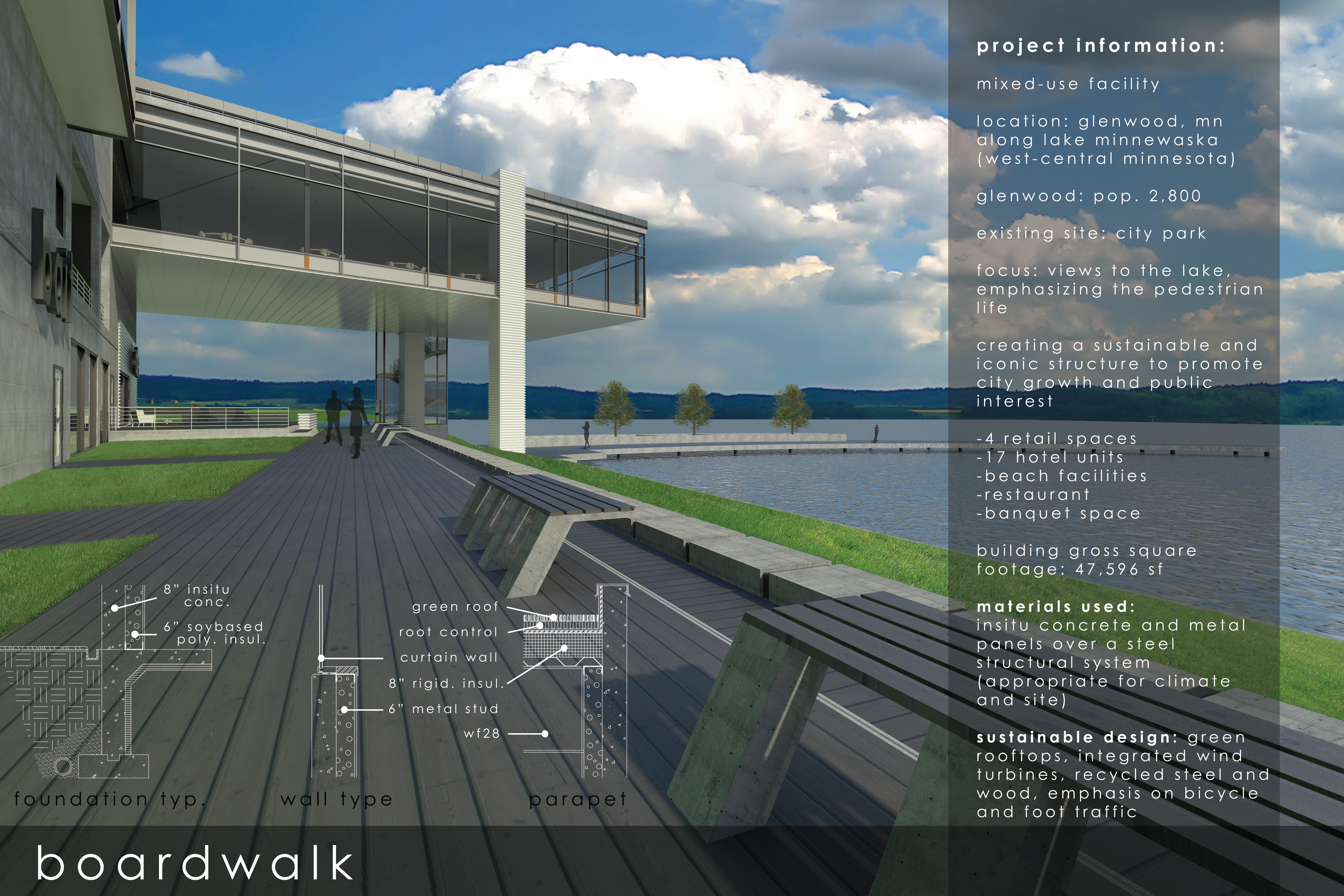
hotel suite



the
wave

hotel

mixed-use lobby



project information:

mixed-use facility

location: glenwood, mn
along lake minnewaska
(west-central minnesota)

glenwood: pop. 2,800

existing site: city park

focus: views to the lake,
emphasizing the pedestrian
life

creating a sustainable and
iconic structure to promote
city growth and public
interest

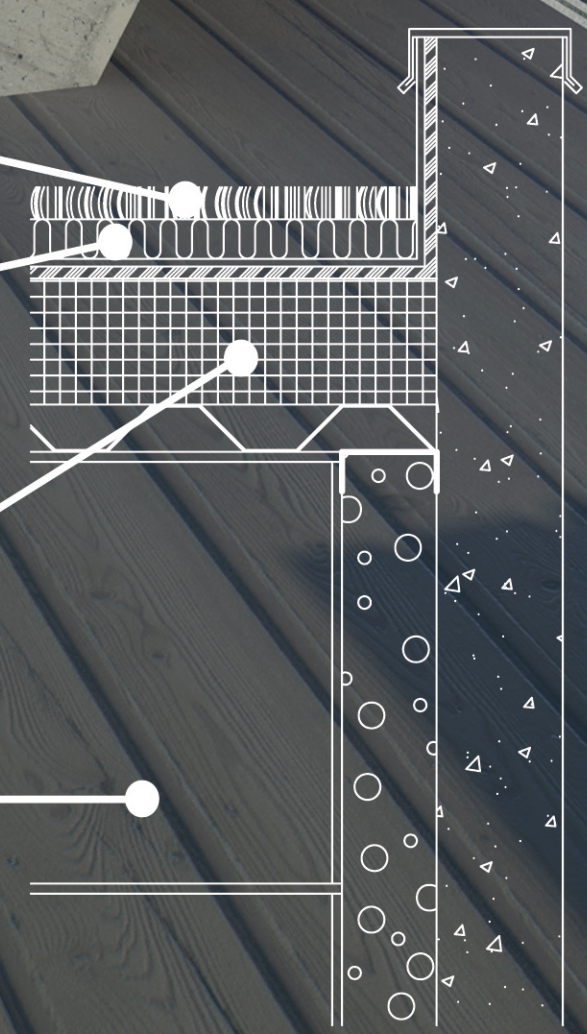
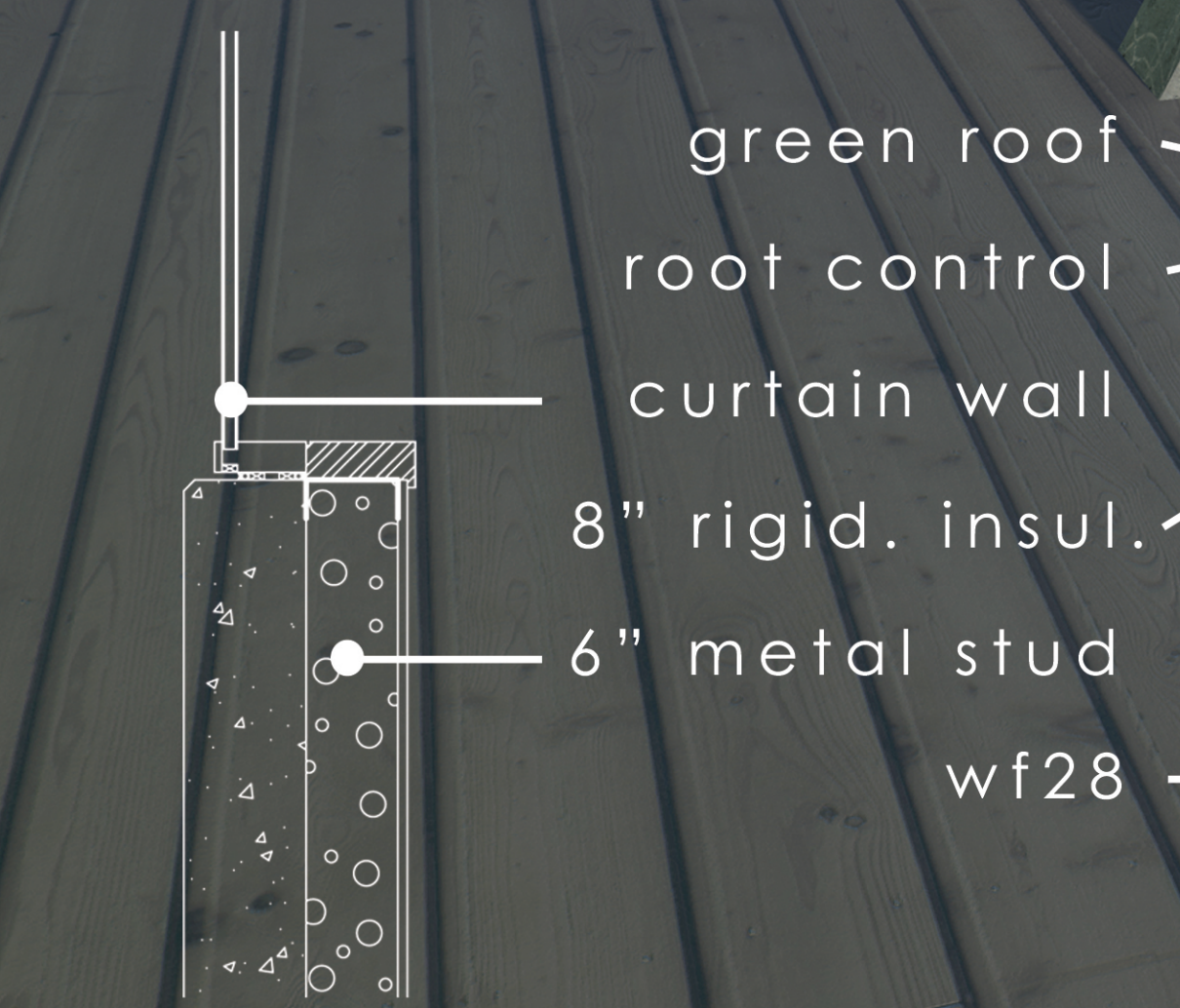
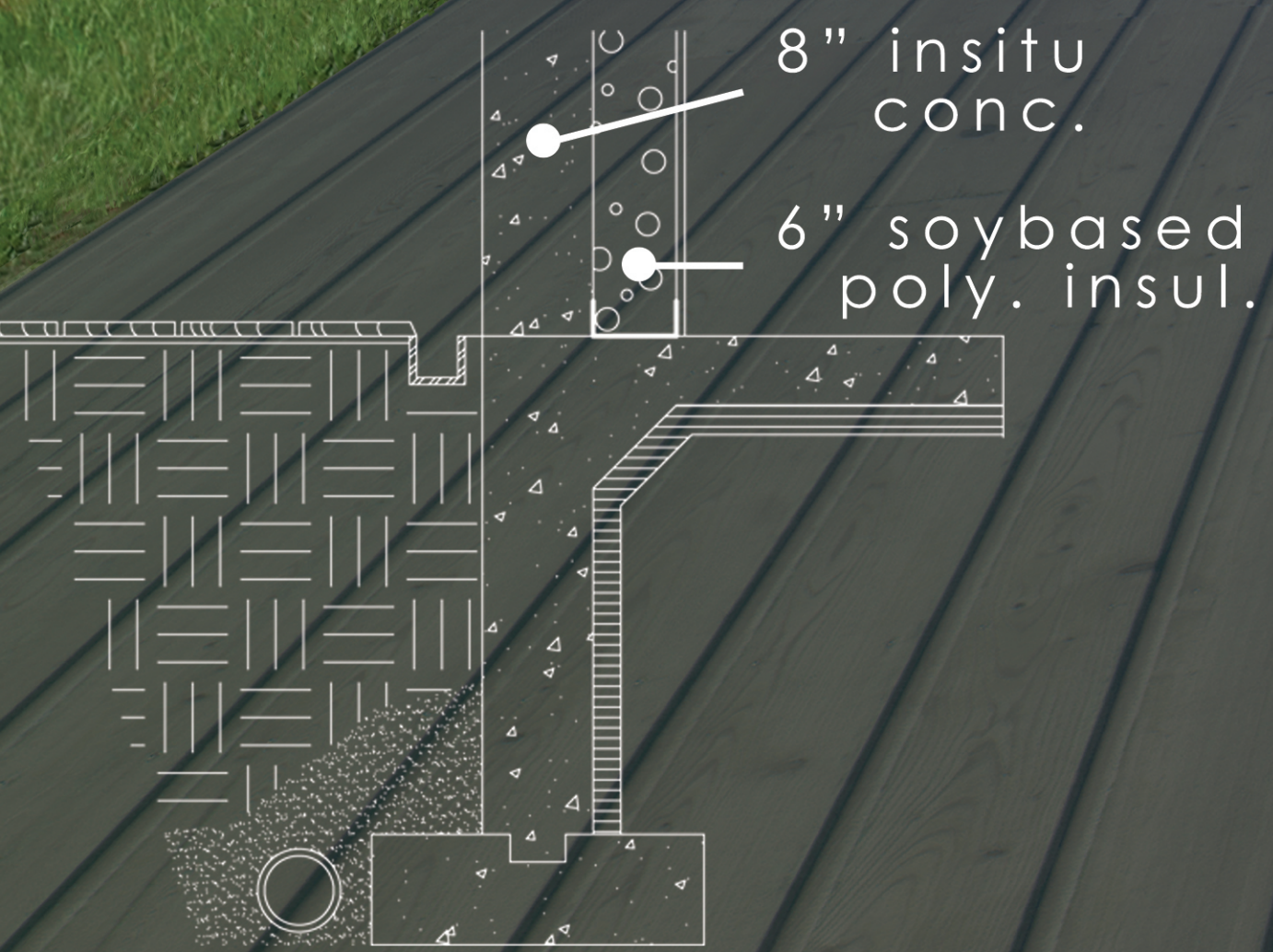
- 4 retail spaces
- 17 hotel units
- beach facilities
- restaurant
- banquet space

building gross square
footage: 47,596 sf

materials used:

insitu concrete and metal
panels over a steel
structural system
(appropriate for climate
and site)

sustainable design: green
rooftops, integrated wind
turbines, recycled steel and
wood, emphasis on bicycle
and foot traffic



foundation typ.

wall type

parapet

boardwalk

The Wave is a project based off of the idea that architecture can promote and encourage the sustainability of rural communities. Solutions to this problem will come from the help and cooperation of the community and society as a whole. Survival of the community results from the adaptability of the citizens, while ensuring the necessities of life and happiness. The design is situated on the shoreline of Lake Minnewaska, which is the main asset to the city. Through sustainable strategies and local building materials, the wave promotes growth, inspiration, and pride. The mixed-use design encourages flexible and adaptable spaces, allowing each individual space to benefit from one another.

The design intention was to create a building which properly serves the community and aids in its survival. Promoting growth and tourism to the city is paramount.



retail