



# Elements of the office Workspace

Design Thesis  
Michael Stueven

# Problem Statement

- How does the natural environment affect the work conditions in the built environment?



# Topology

- Commercial Corporation Office Structure

## Theoretical Premise

- Productivity in a workplace depends on the quality of the space within a working environment and the interaction with the people who work there.



# Research

- Office productivity
  - Office is a place to work not talk
  - Relationship of the building and the user
  - Personal control of the office environment

# Program

- Reception/Gathering
- Office/Work Space
- Experiment Labs
- Conference
- Storage Filing
- Dining/ Cafeteria
- Delivery

# Site

- Maple Grove, MN



# Site

Building of the community with Arbor Lakes



- Source: commons.wikimedia.org, opuscorp.com



# Site

Great River Energy



# Site

Figure 2.7 Net Developable Land

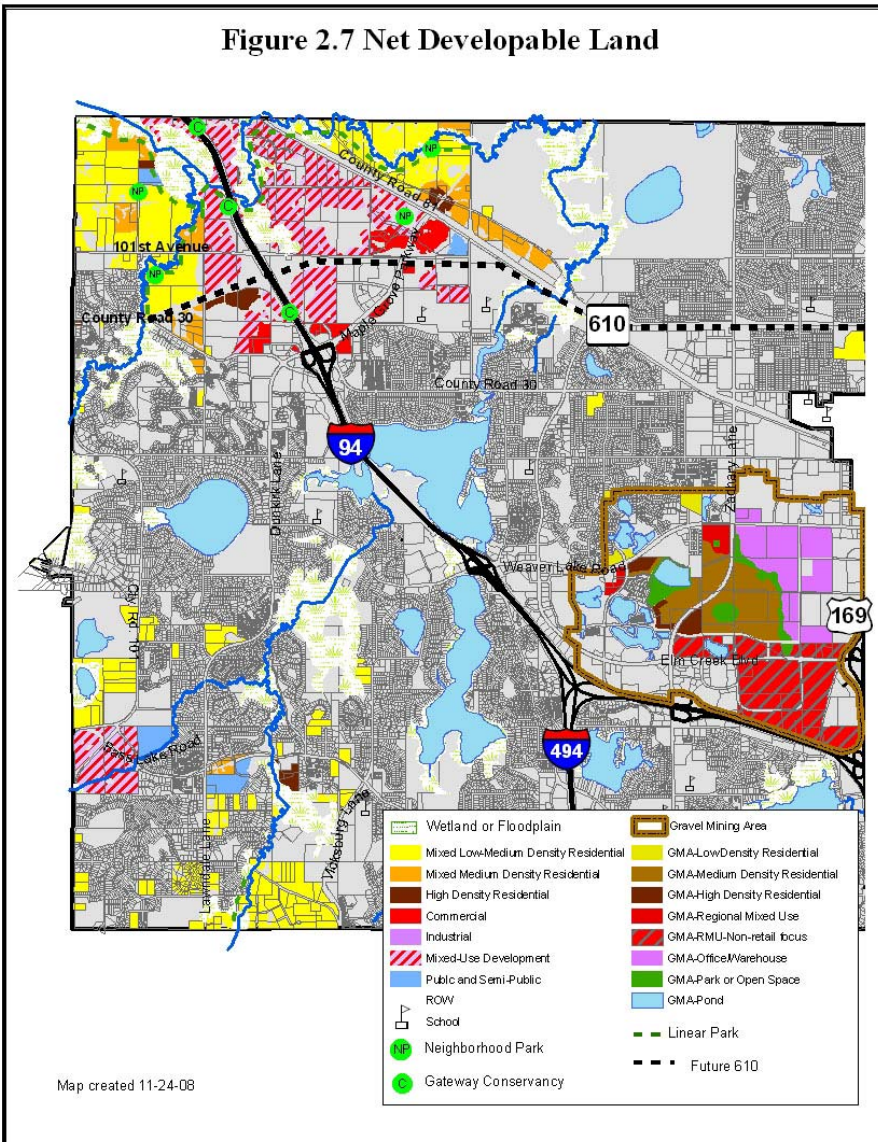
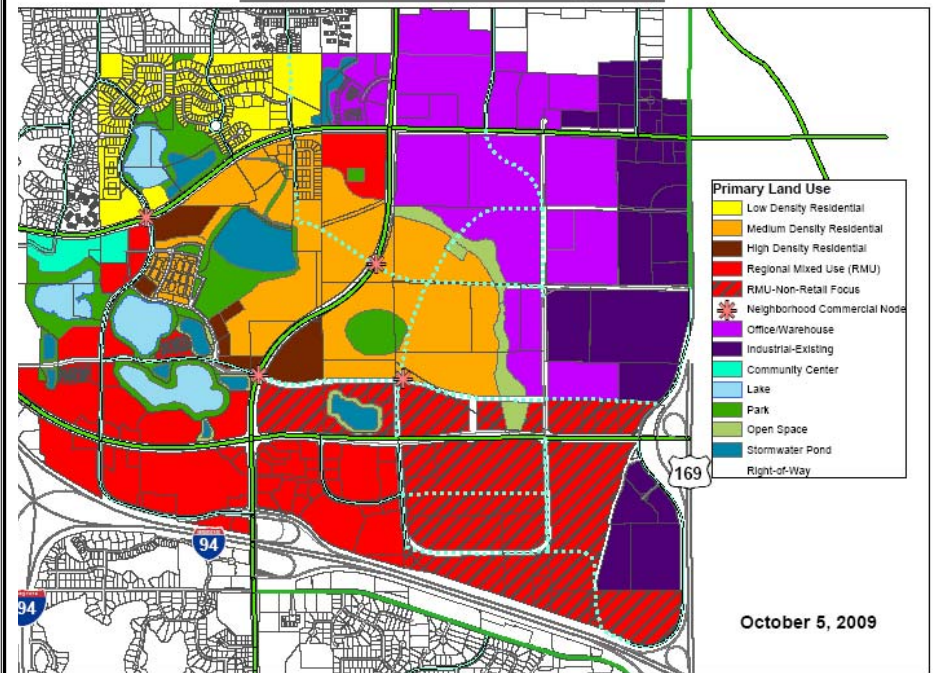


Figure 2.4

Maple Grove Gravel Mining Area



Source: City of Maple Grove



# Site

Figure 2: Major Uses Maple Grove Gravel Mining Area

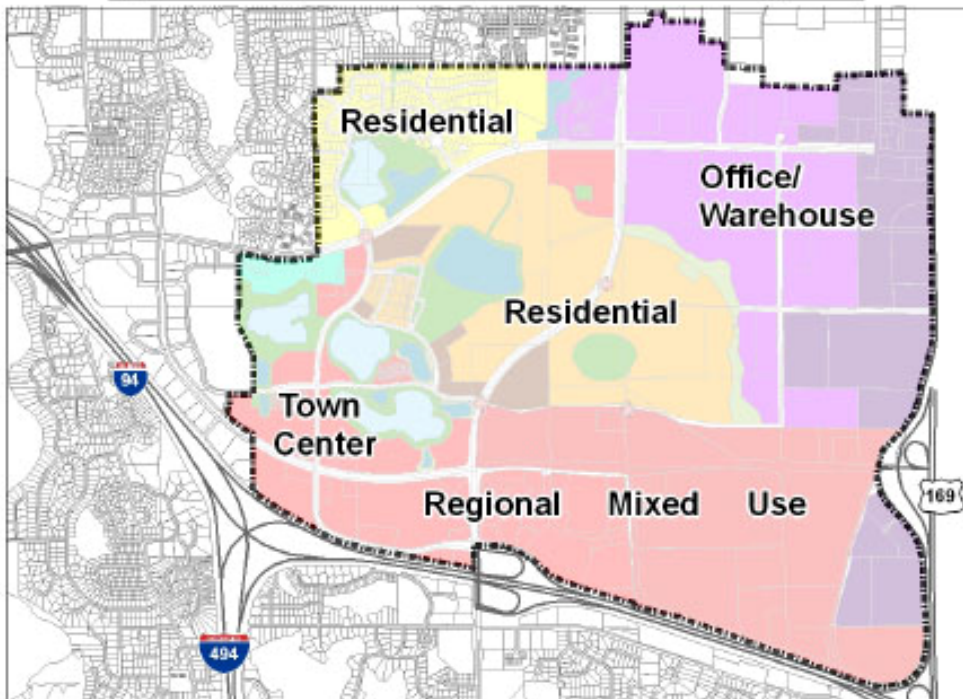
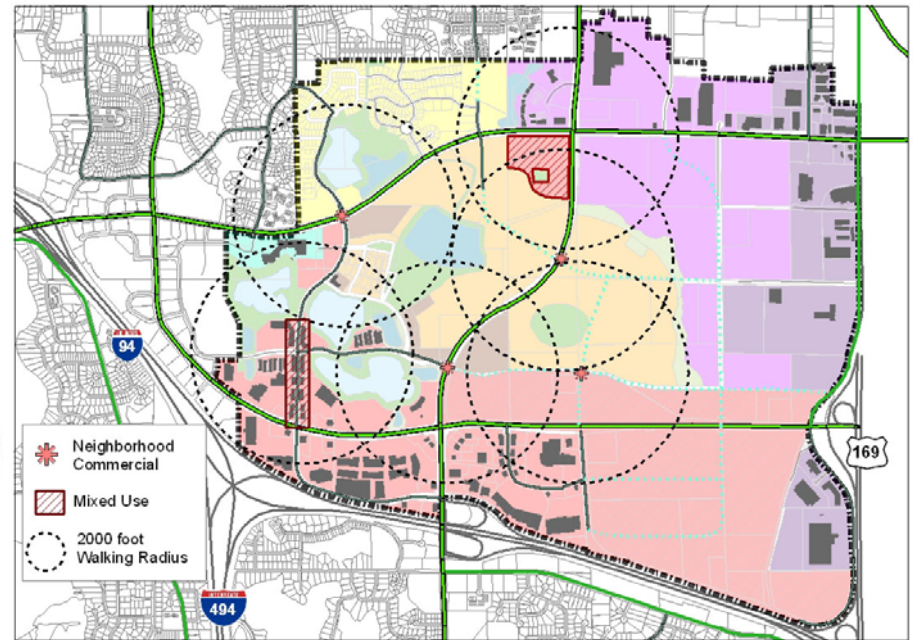


Figure 5: Neighborhood Commercial Maple Grove Gravel Mining Area



# Site

Figure 10: Ponds Maple Grove Gravel Mining Area

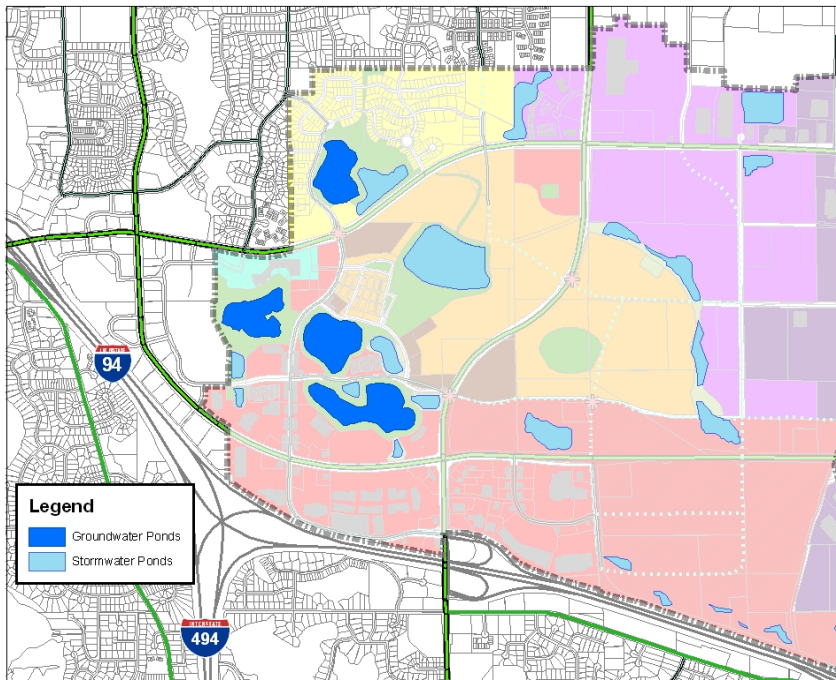
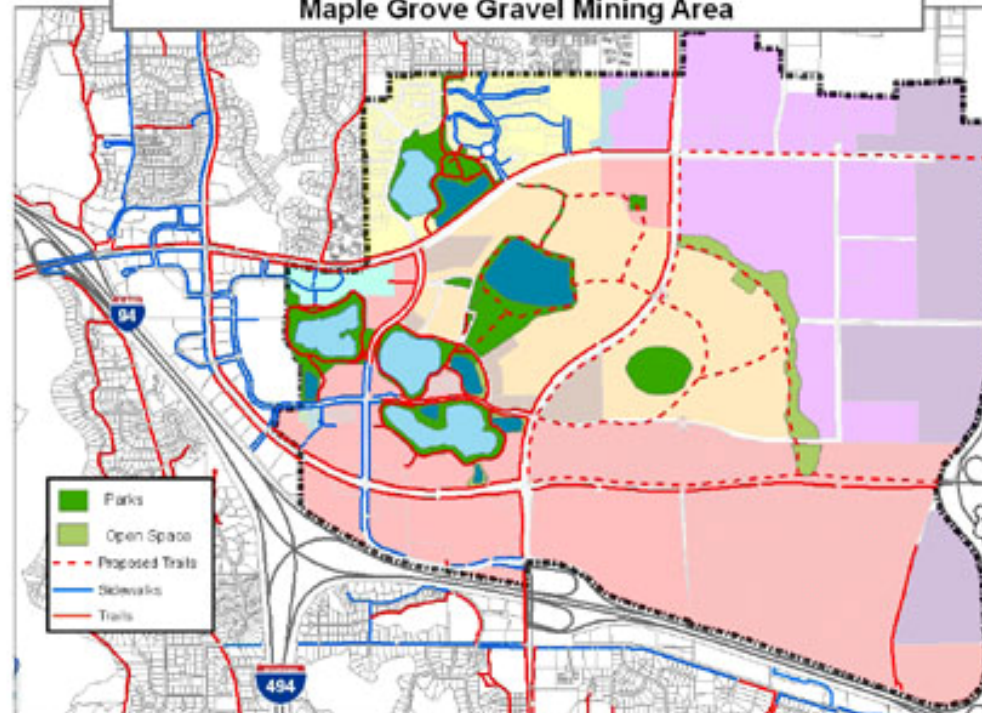


Figure 15: Parks, Open Space, and Pedestrian Connections Maple Grove Gravel Mining Area





# Site





# Site



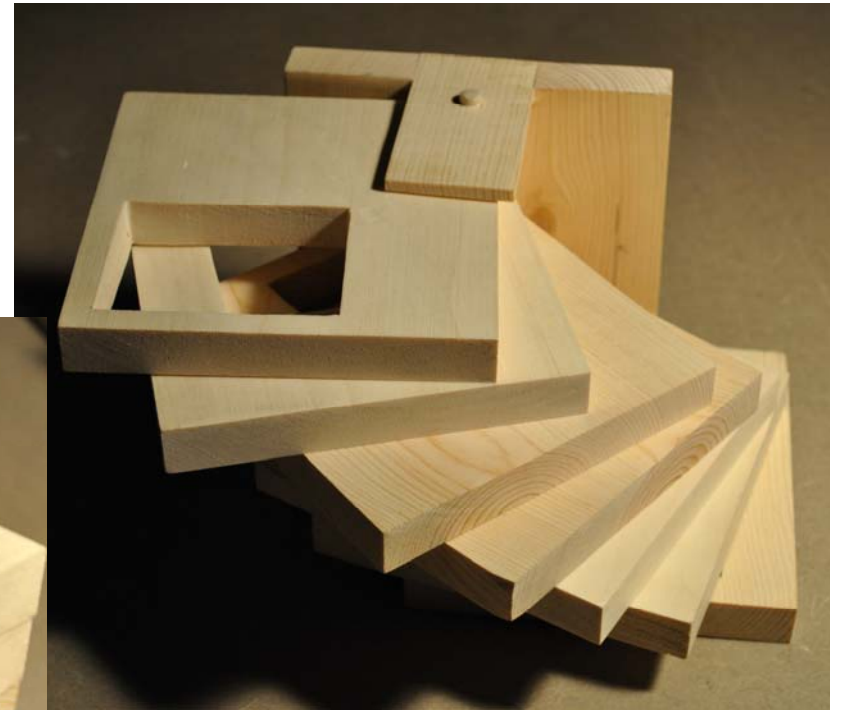
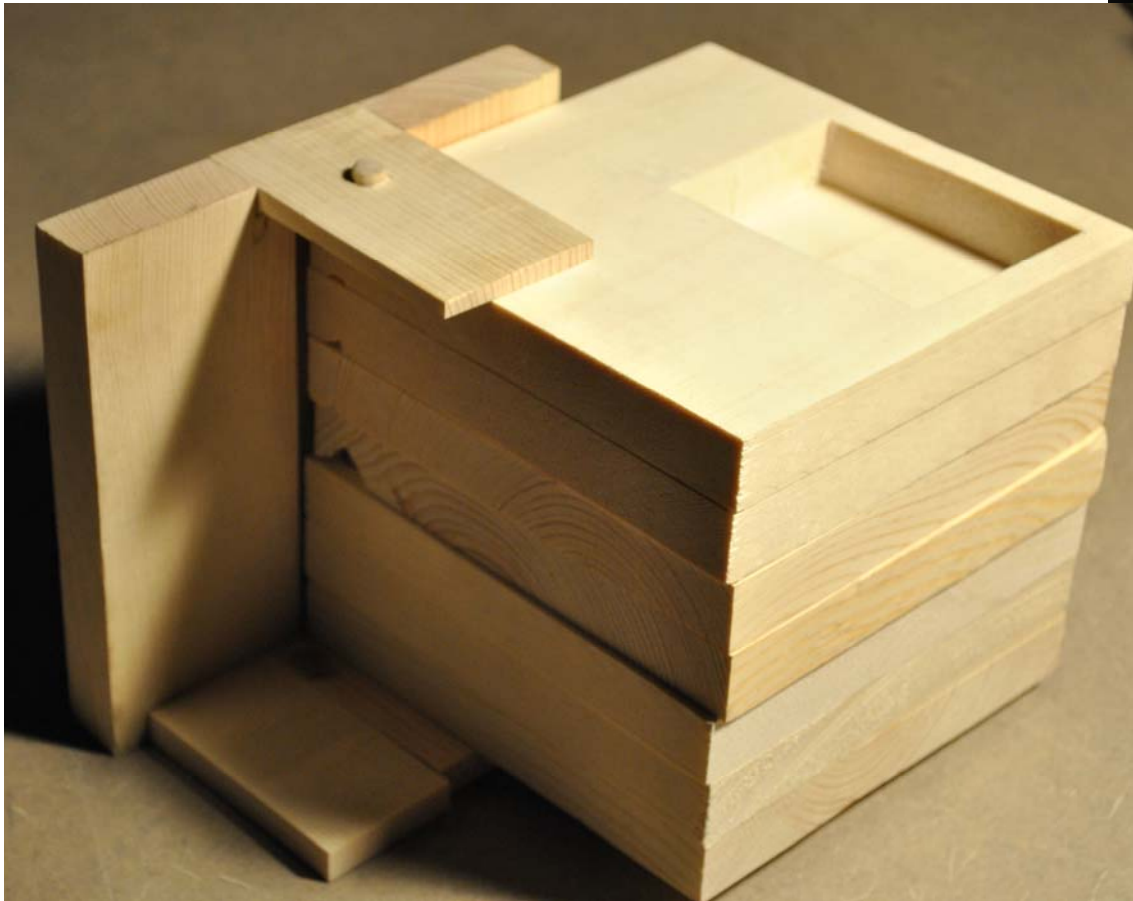
# Site







# Process

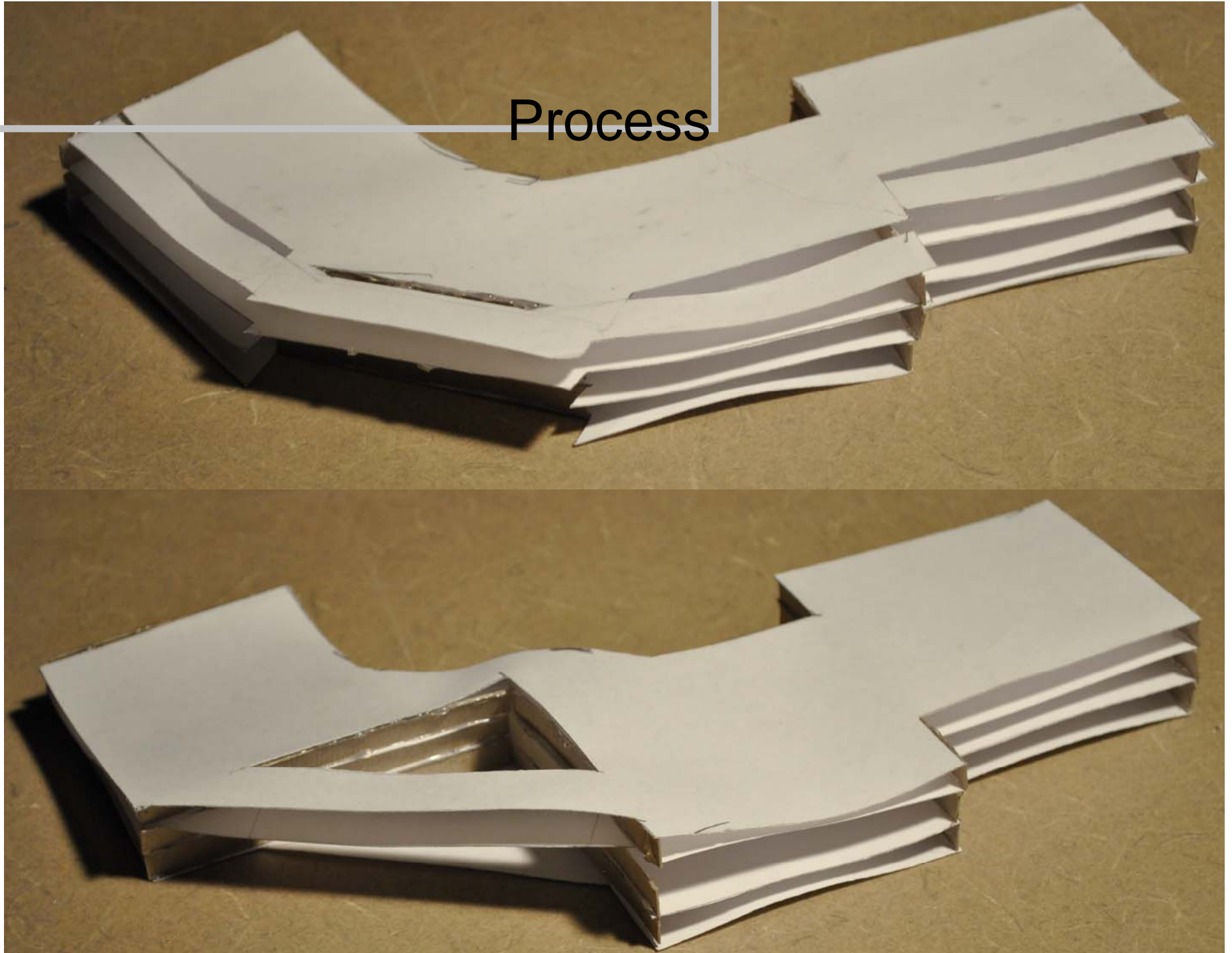


Parti

# Process

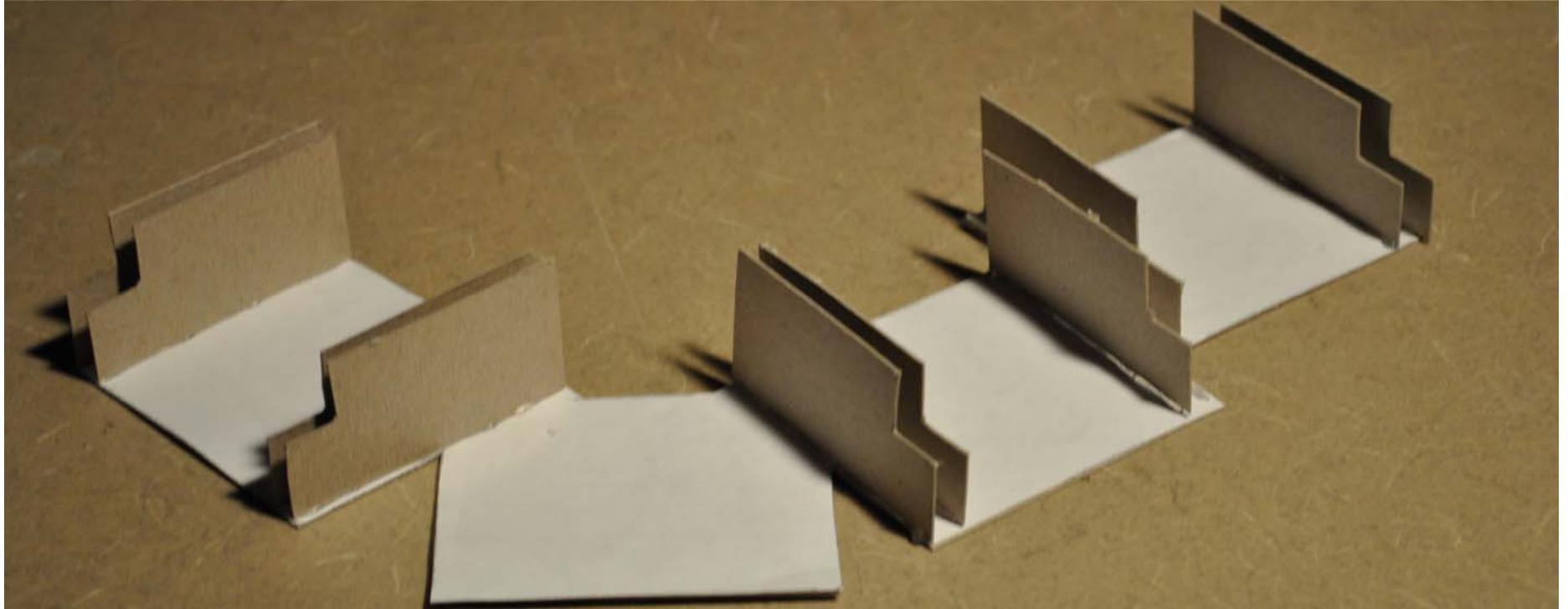
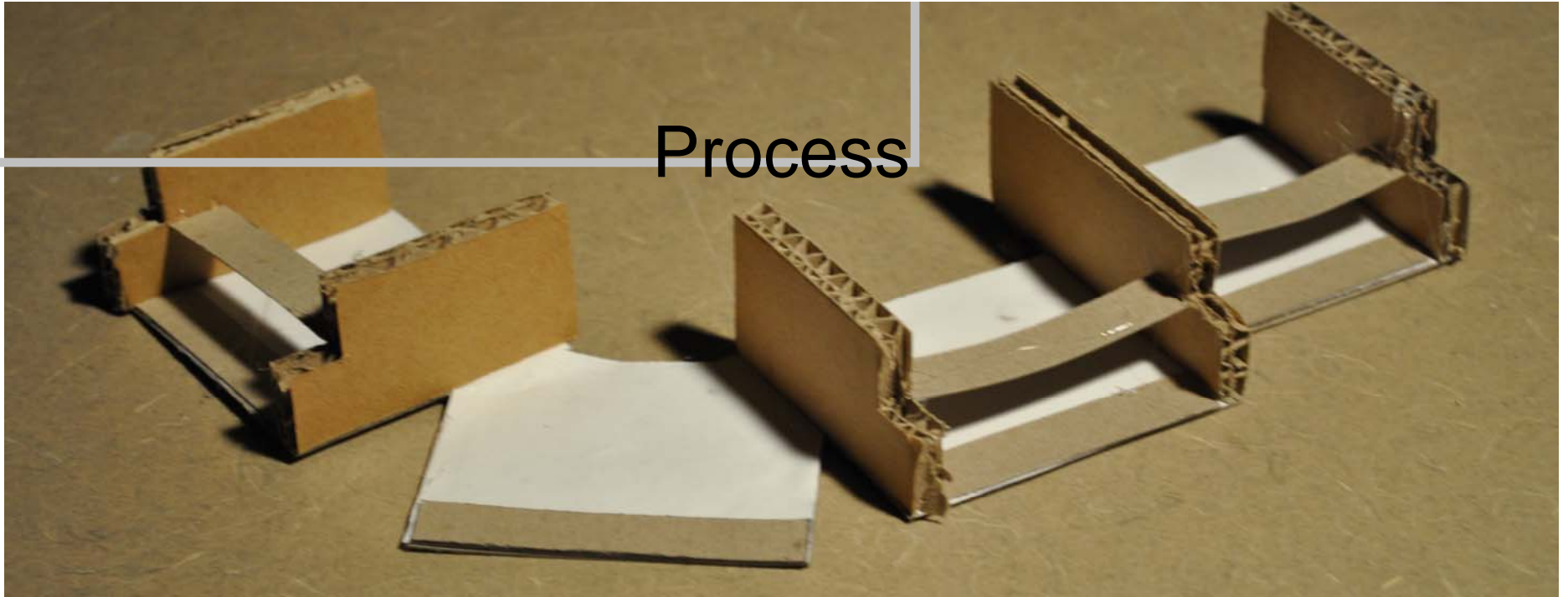


Process





# Process



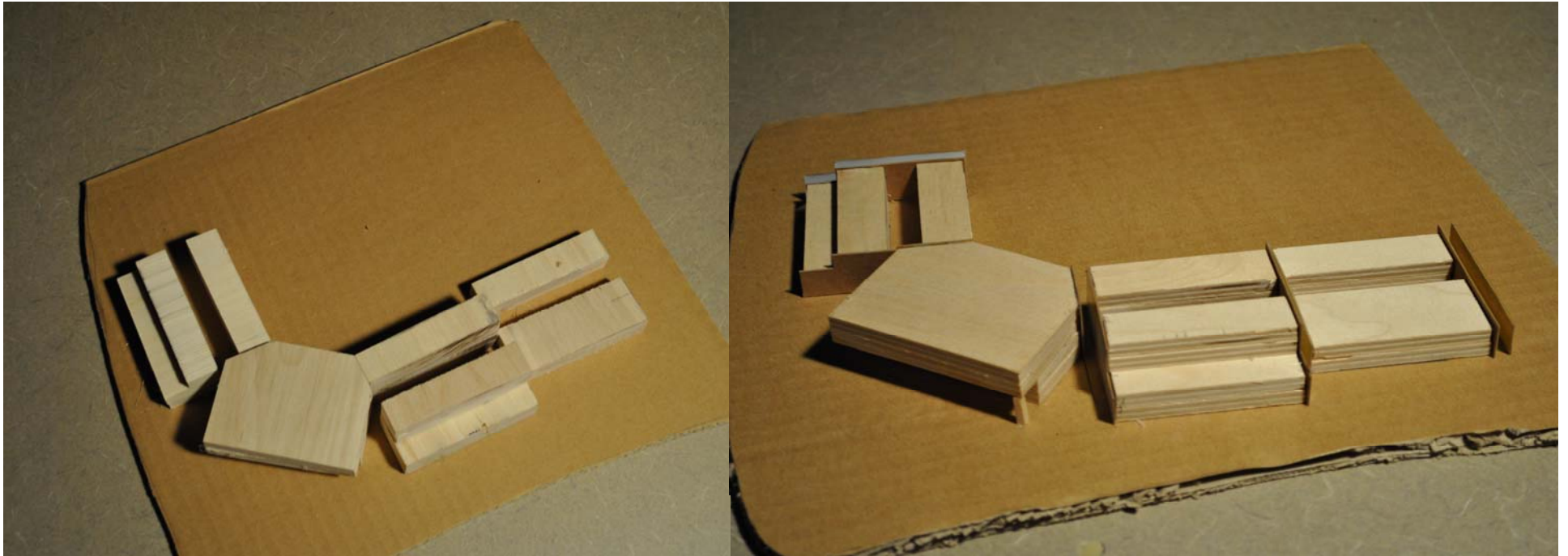


## Process

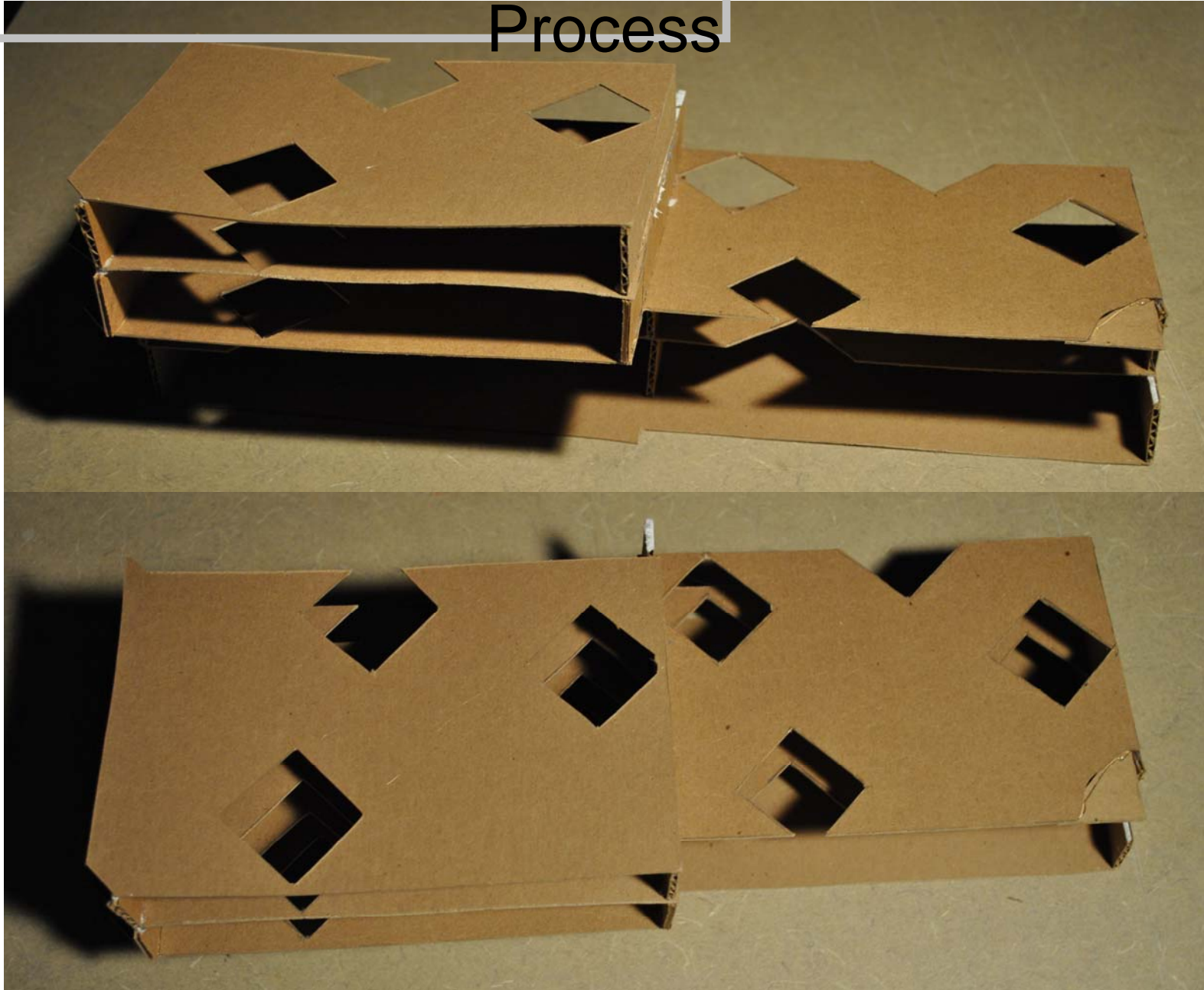
- Mainstreet as a central place to gather and change the setting of the office environment.
- Working with views to the exterior
- Giving everyone the exterior views

# Process

Atriums

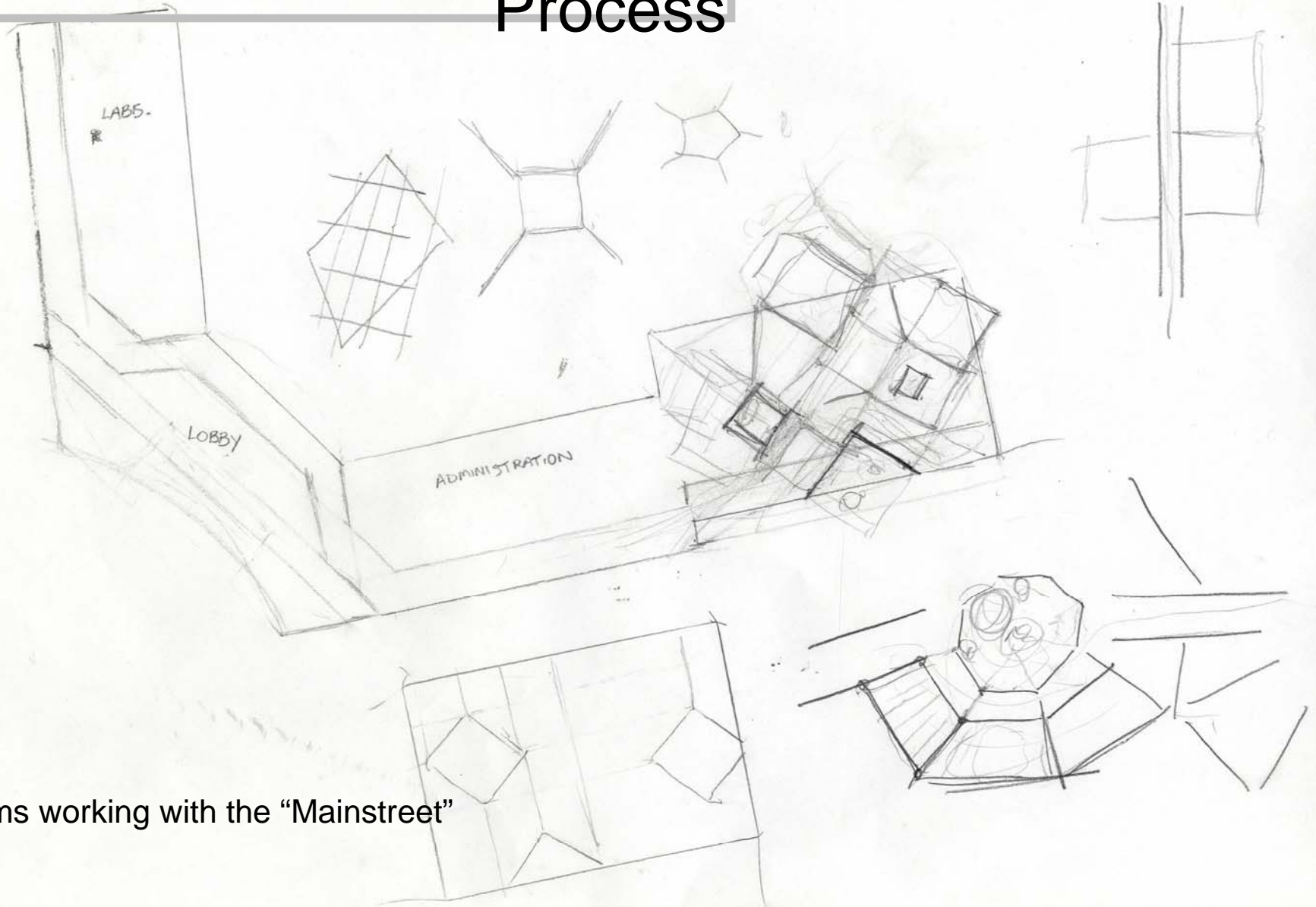


# Process





# Process

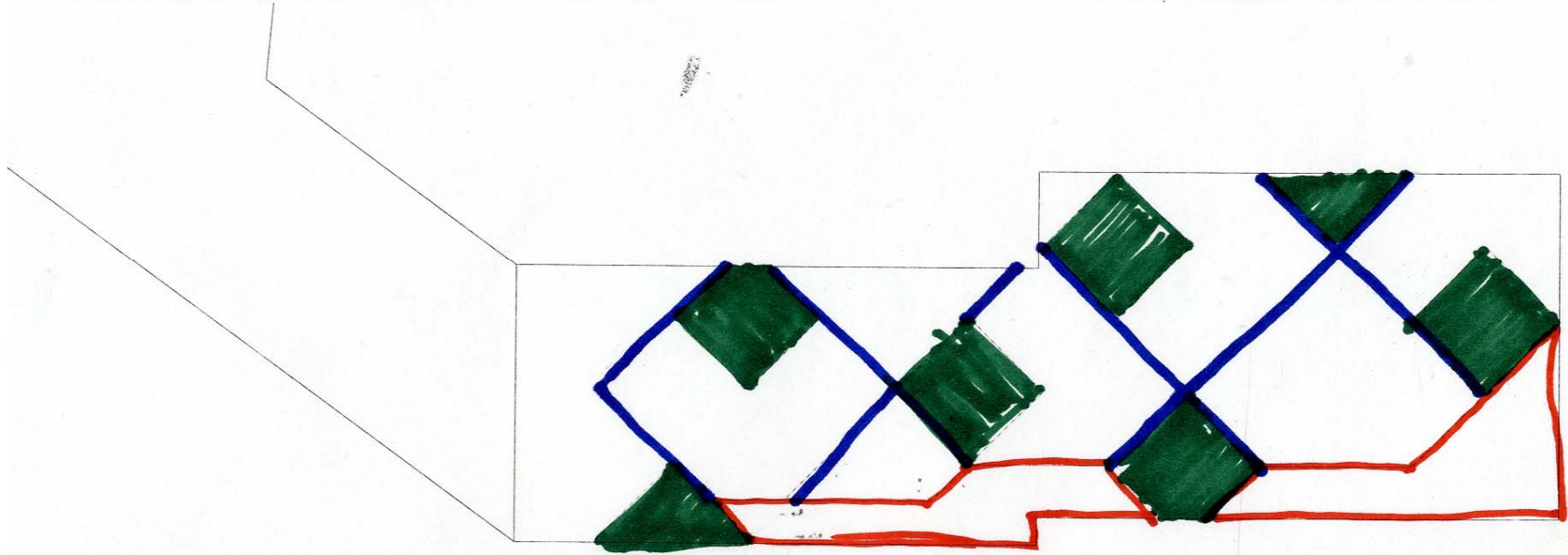
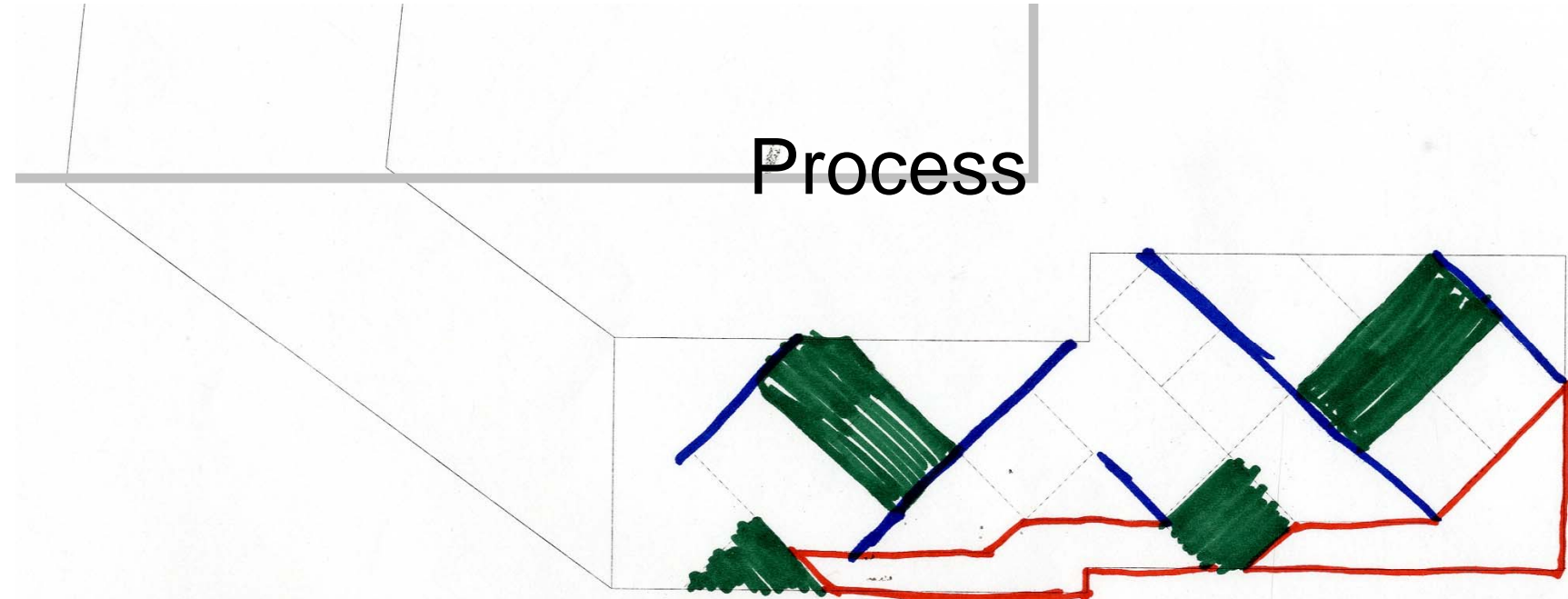


Atriums working with the "Mainstreet"



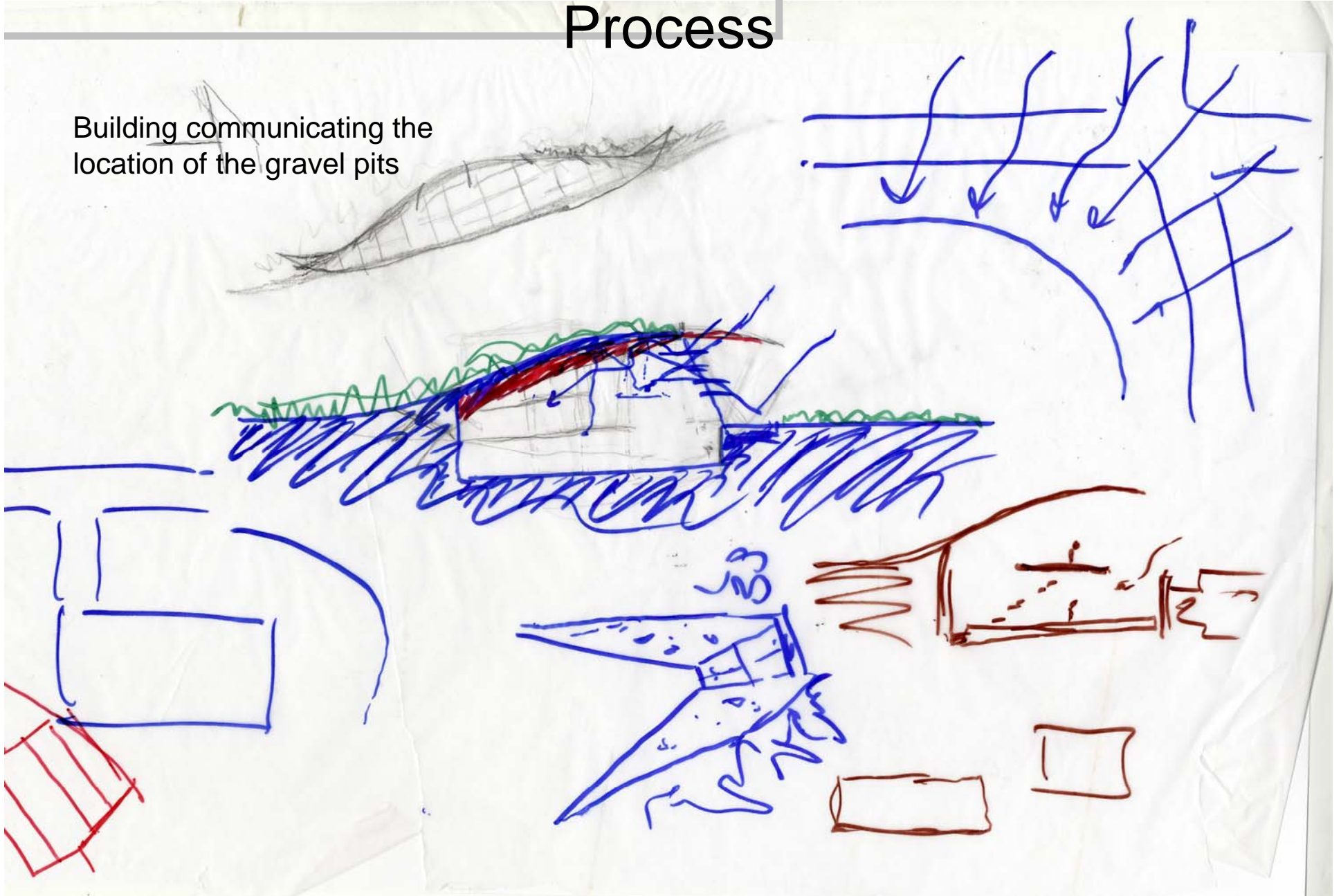
# Process

A

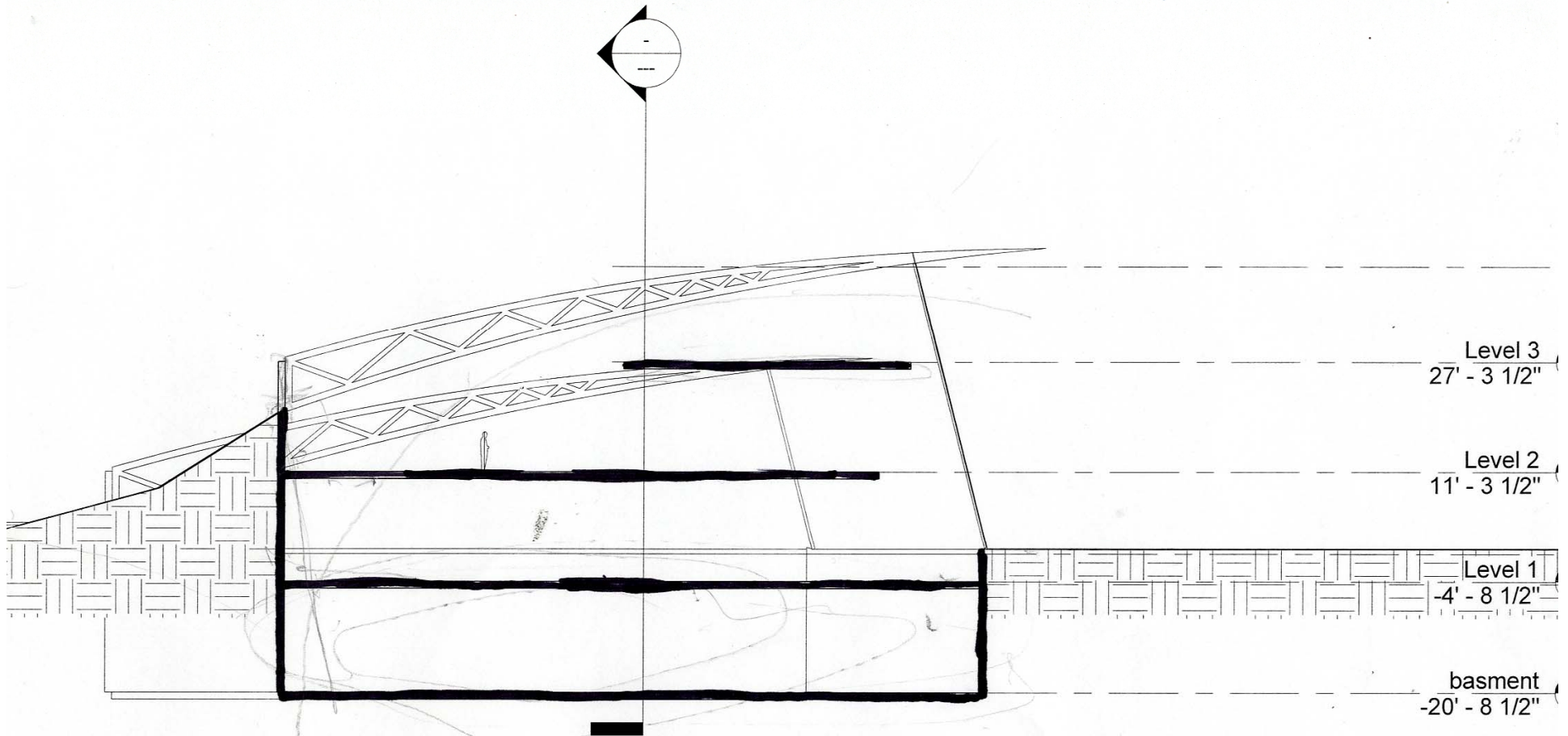


# Process

Building communicating the location of the gravel pits



# Process

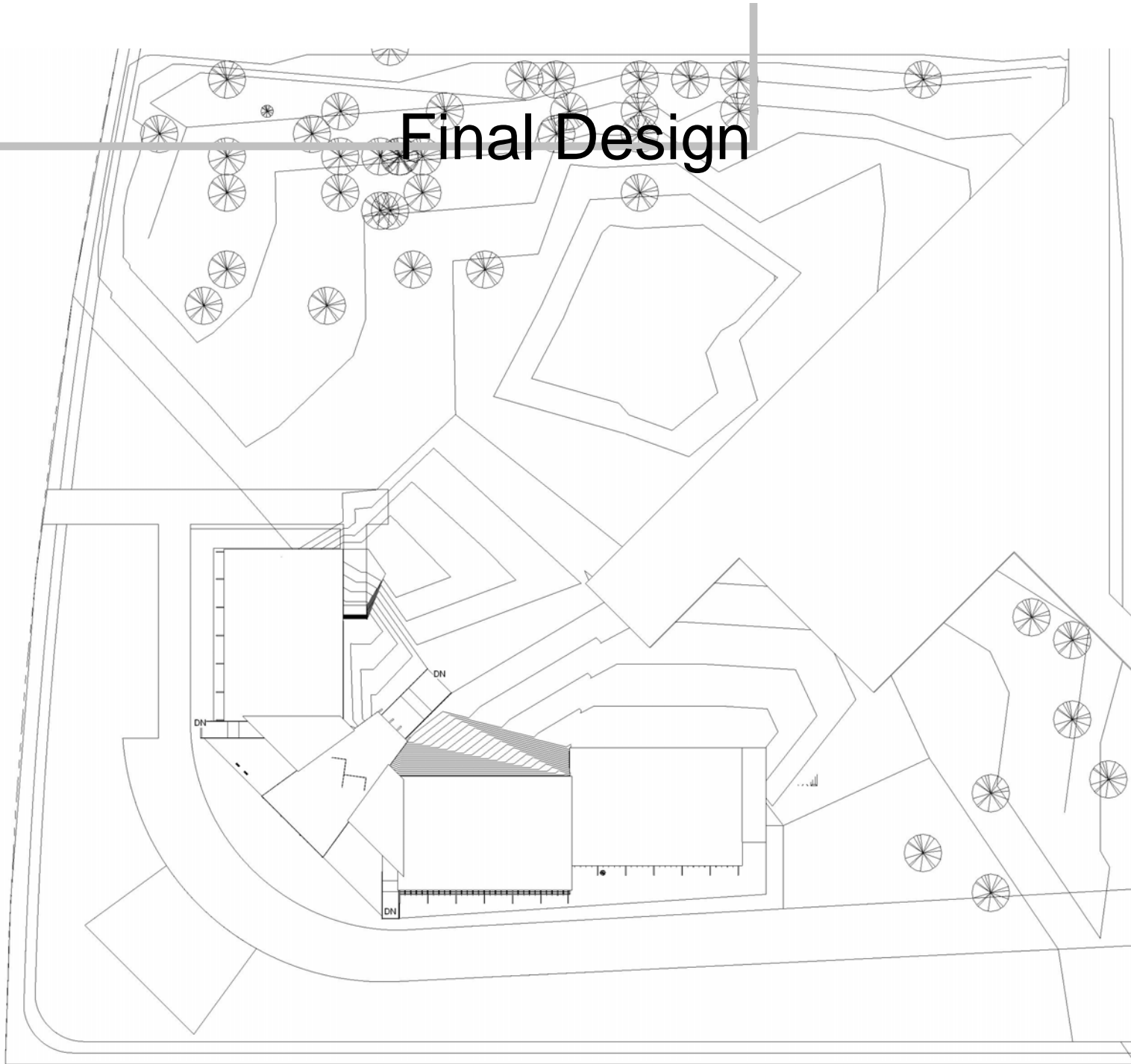




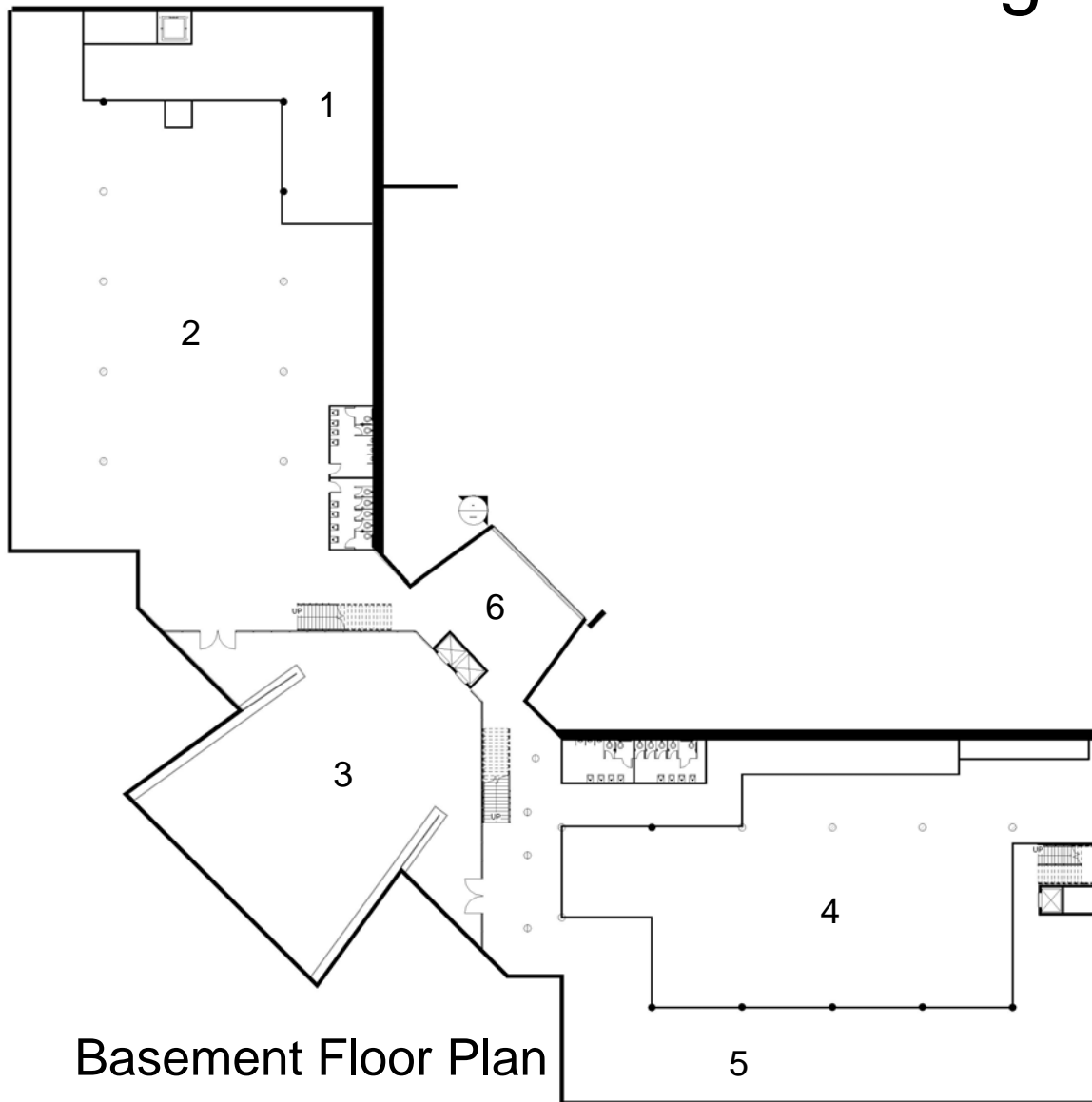
# Building Statistics

- 140,000 sq. ft.
- Typically occupied by 400 people, 50 hours per person per week; and 100 visitors per week, 2 hours per visitor per week
- Geothermal heating and cooling

# Final Design



# Final Design



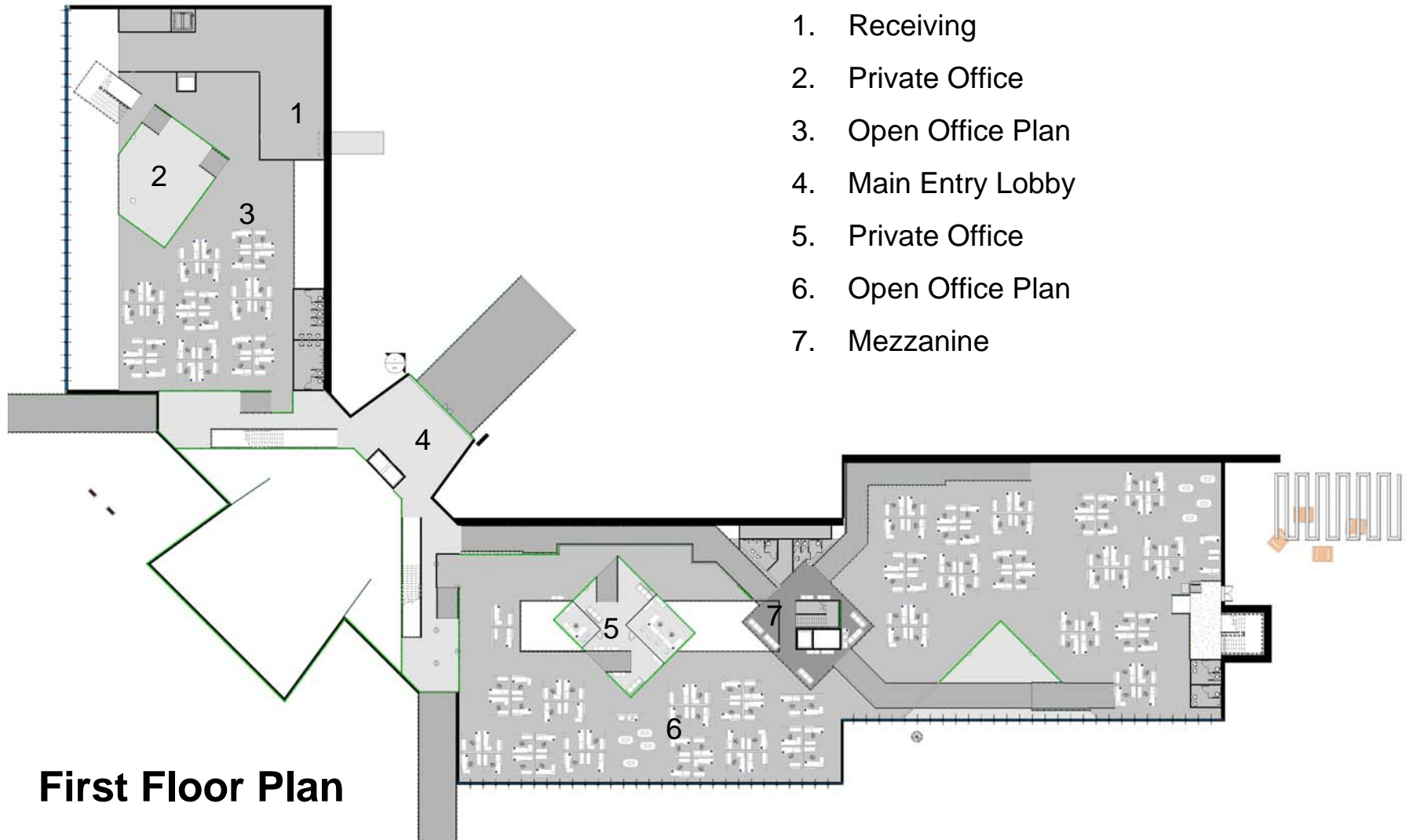
Basement Floor Plan

1. Storage/  
Mechanical
2. Lab/  
Experimental
3. Tour Lobby
4. Mechanical
5. Public Tour  
Circulation
6. Employee  
storage





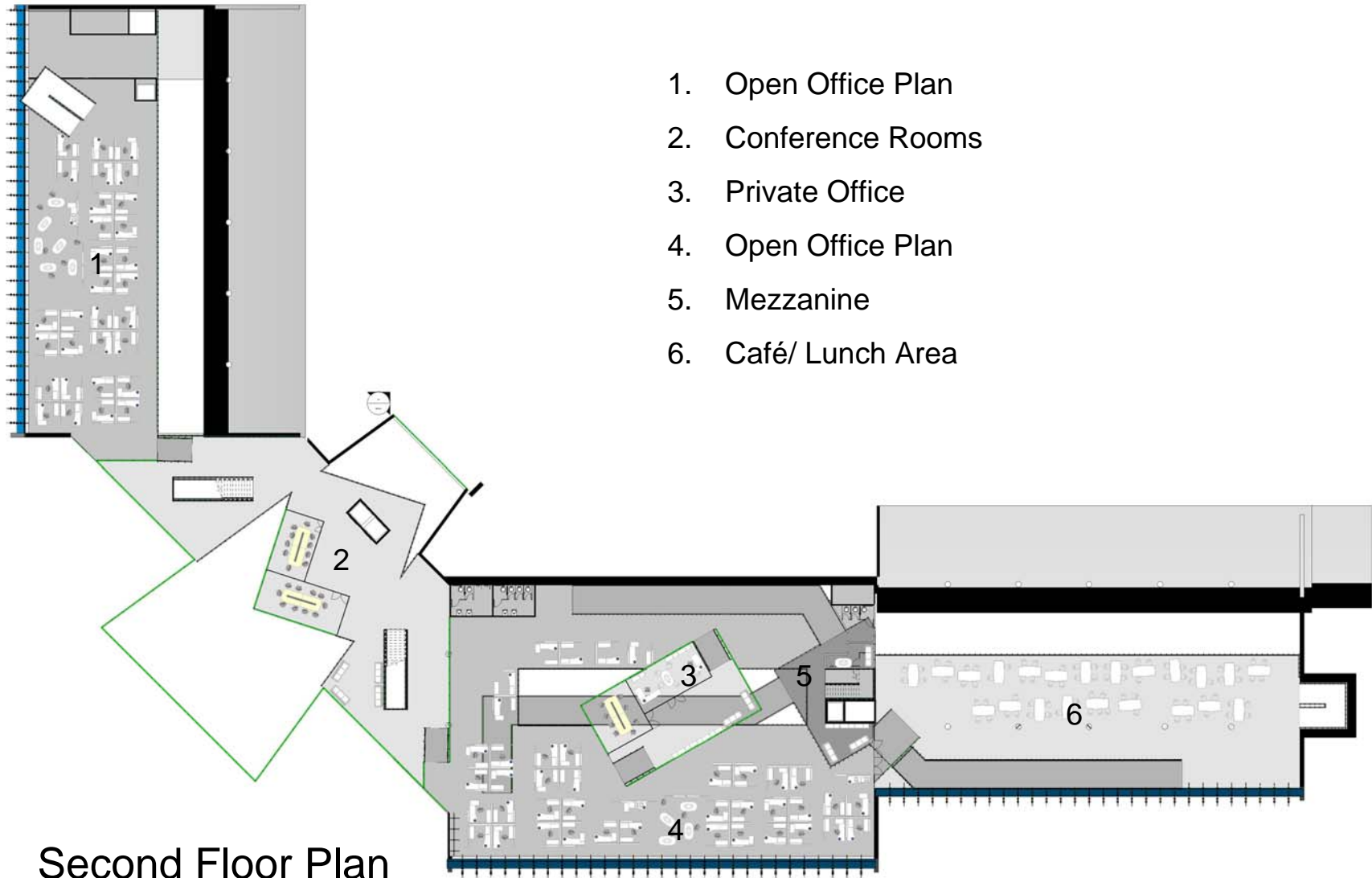
# Final Design



**First Floor Plan**



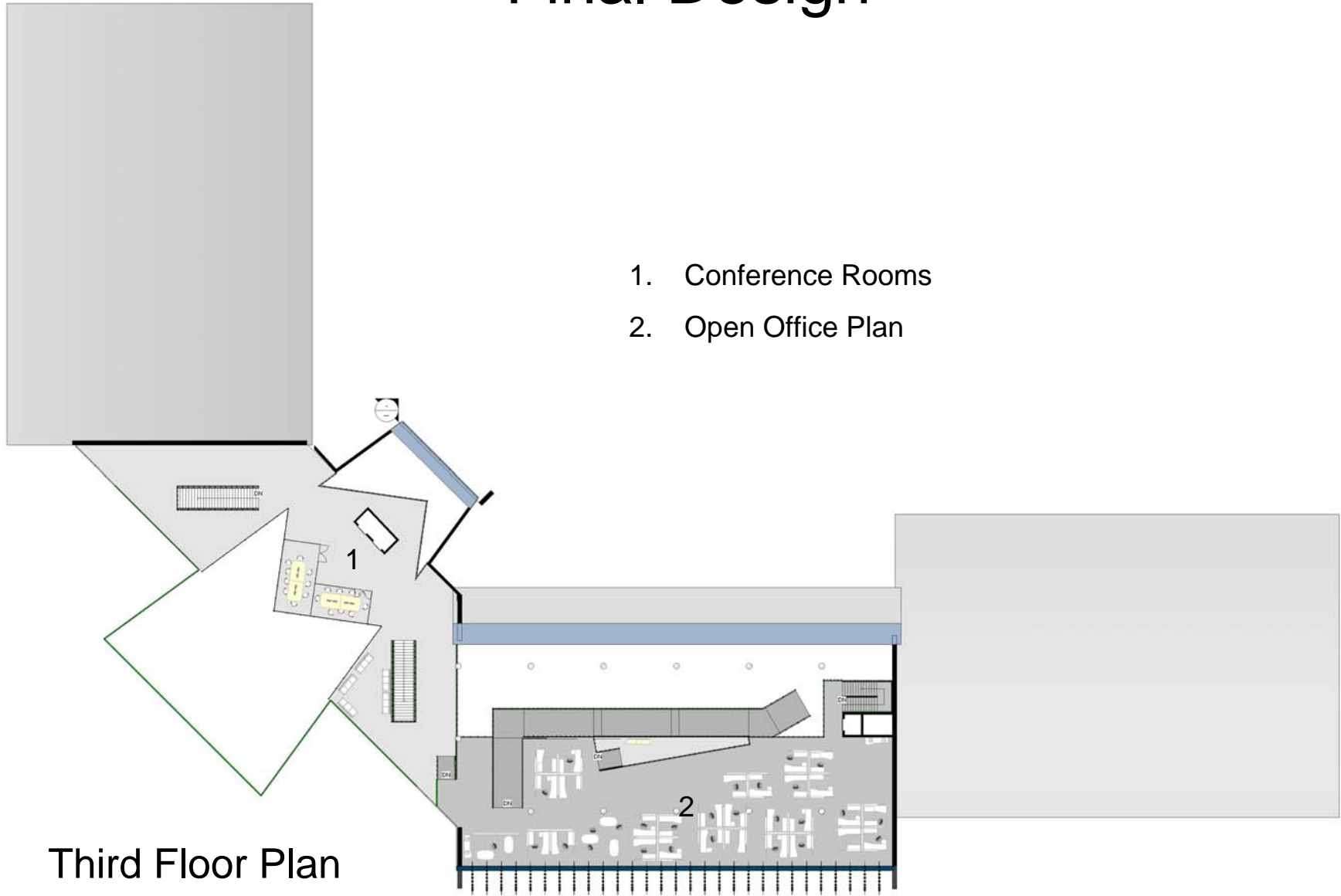
# Final Design



Second Floor Plan

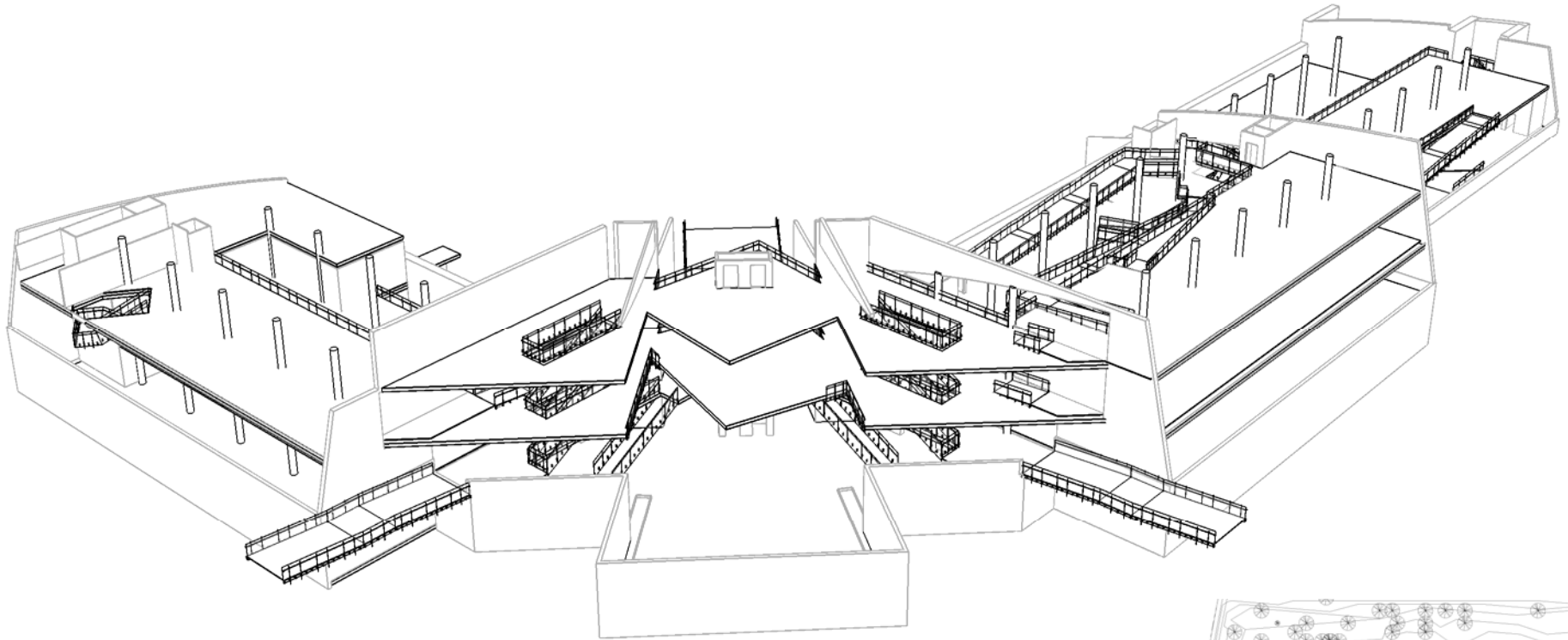
# Final Design

1. Conference Rooms
2. Open Office Plan

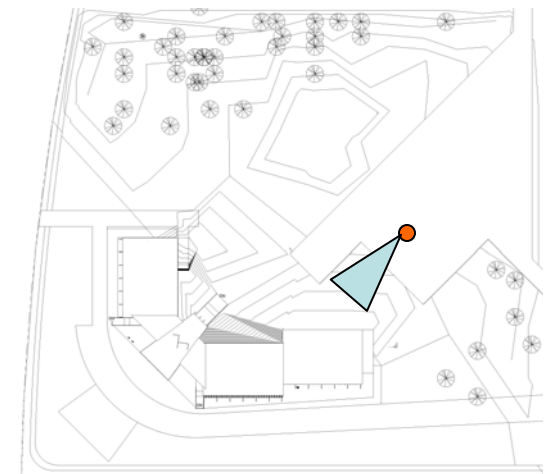
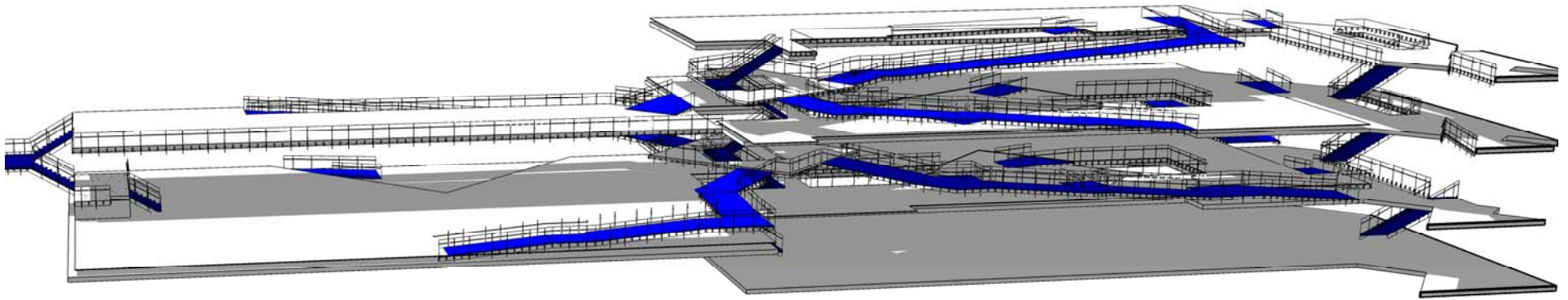


Third Floor Plan

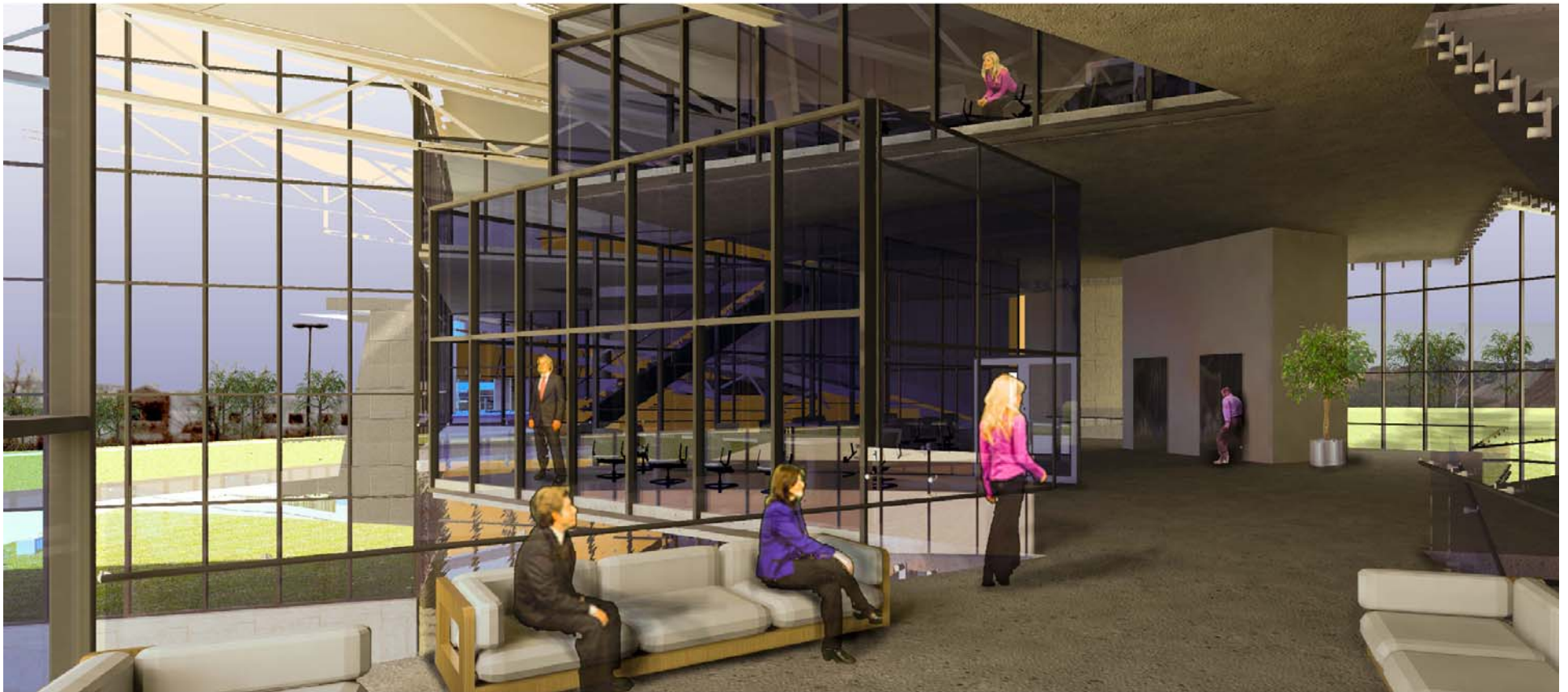
# Final Design



# Final Design



# Final Design





# Final Design



# Final Design

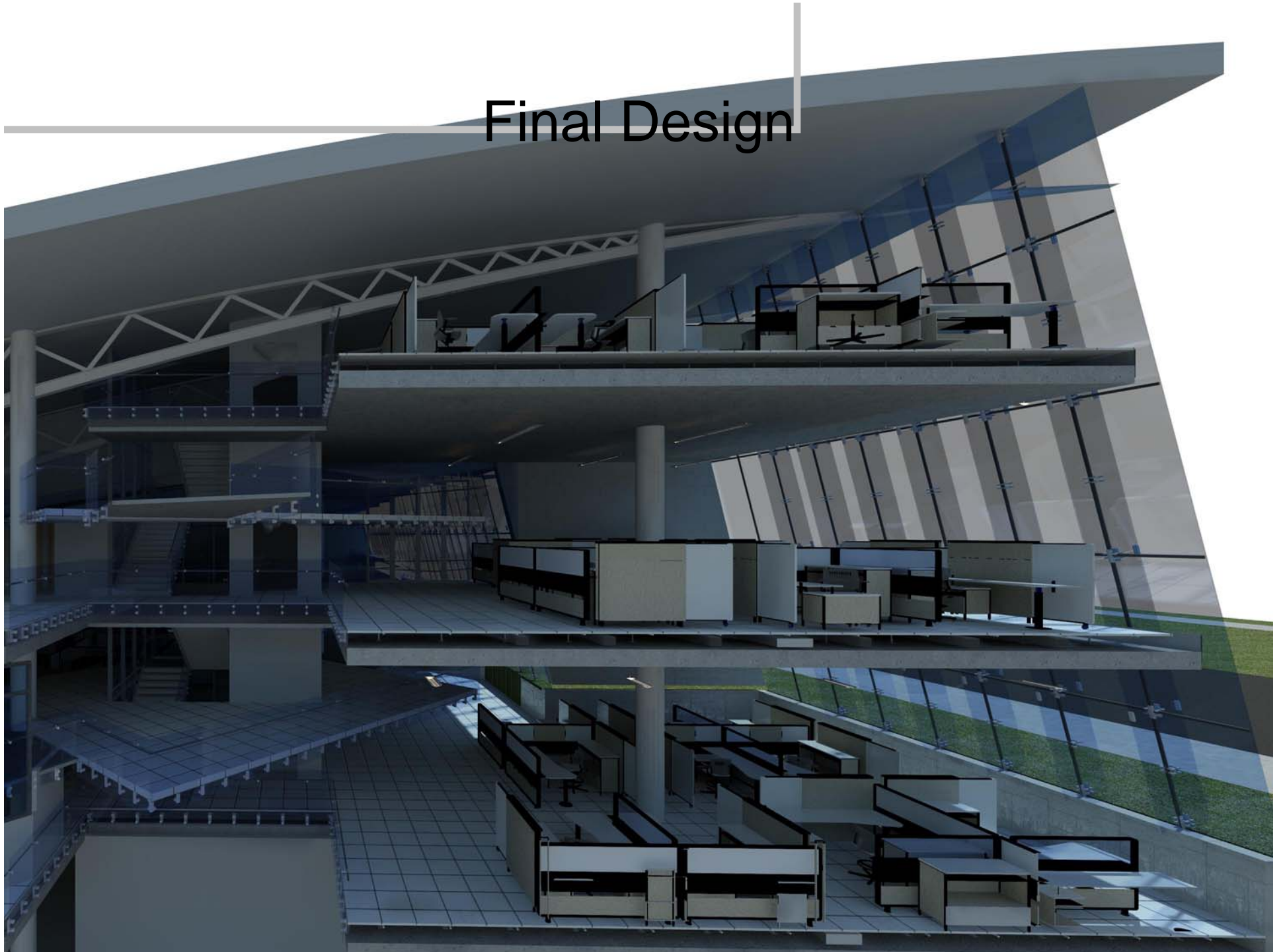


Office Furniture

source: coalesse.com



# Final Design





# Final Design

