

# Immigrant Entrepreneurial Development Center

**SAINT CLOUD MINNESOTA**

Architecture 772 Design Thesis, Spring 2010 Department of Architecture and Landscape Architecture, North Dakota State University



## Intent

The Immigrant Entrepreneurial Development Center will aim to improve the quality of life for immigrants living in St. Cloud, as well as lessen the environmental impacts using sustainable strategies within the structure and surrounding site.

To address the issue of urban sprawl, I located a site in downtown St. Cloud to bring new life and culture into the area. The Immigrant Entrepreneurial Development Center will allow Immigrants to develop skills needed to start a new business, learn communication skills, learn to grow food, better the economy and develop a new way of life in St. Cloud.



# Residential Units



The residential units consist of five different layouts. Each layout has a different exterior finish making the entire south facade unique to the area.

The push and pull on the south facade creates opportunities for green roofs and additional balcony spaces. Inspiration for this form was created from unevenly stacked granite which is found around the area of St. Cloud.



# West Entrance





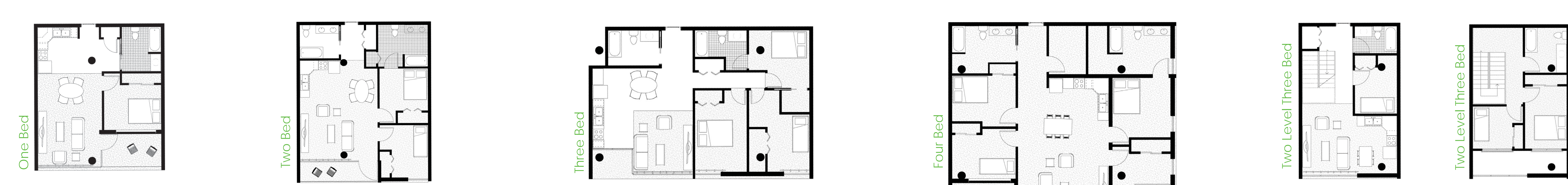
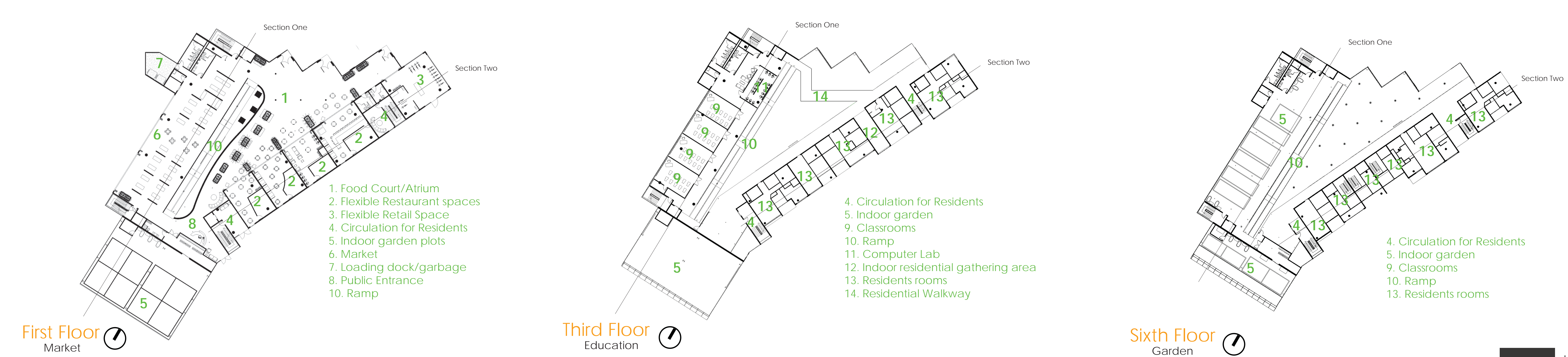
## Central Atrium Space

The atrium space is centrally located in the heart of the building. The vibrant colors, water features and circulation stemming from this space create an enjoyable place to occupy.

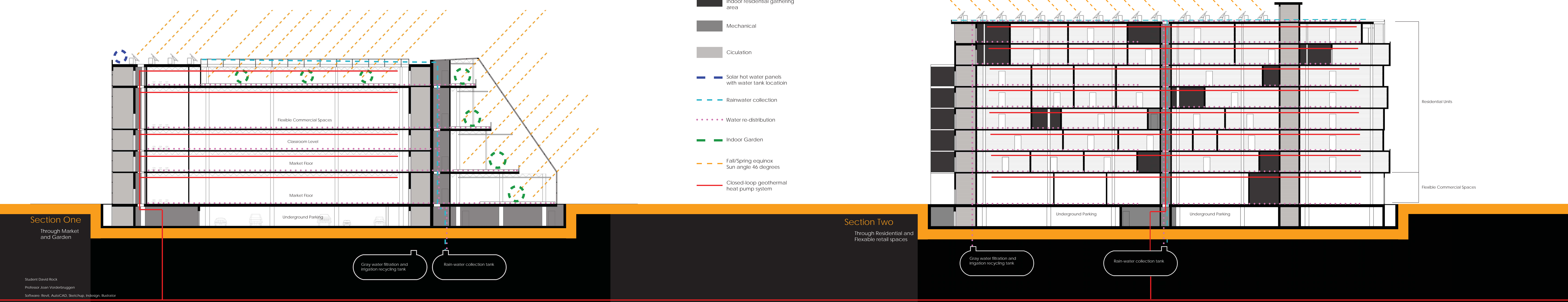
The West side is connected through a series of ramps, while the East side houses the residential corridors. Both circulation spaces are open to the atrium.

# North Entrance





- Indoor residential gathering area
- Mechanical
- Circulation
- Solar hot water panels with water tank location
- Rainwater collection
- Water re-distribution
- Indoor Garden
- Fall/Spring equinox Sun angle 46 degrees
- Closed-loop geothermal heat pump system



Student David Rock  
 Professor Joan Vorderbruggen  
 Software: Revit, AutoCAD, Sketchup, Indesign, Illustrator