



Welcome

David Rock
Design Thesis 2010





Thought process

Movement

The American Dream

The economy

St. Cloud

Immigration





Can architecture redefine the American Dream by assisting immigrants to establish themselves in a community?





Inspiration

HDC (Neighborhood Development Center)

"...help emerging entrepreneurs develop successful businesses that serve their community, and to help community groups build a stronger neighborhood economy."





Typology

Mixed-Use building

Immigrant Entrepreneurial Development Center

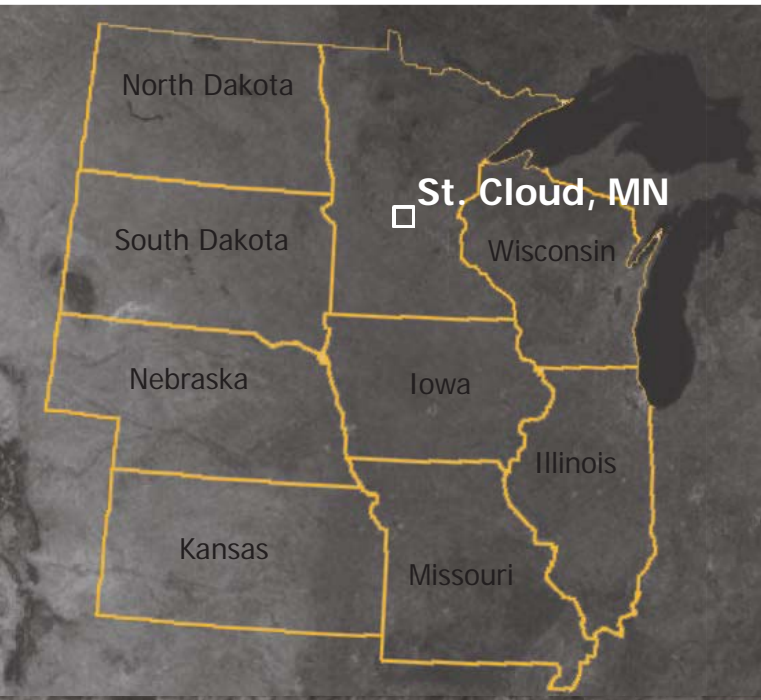
live-work-play





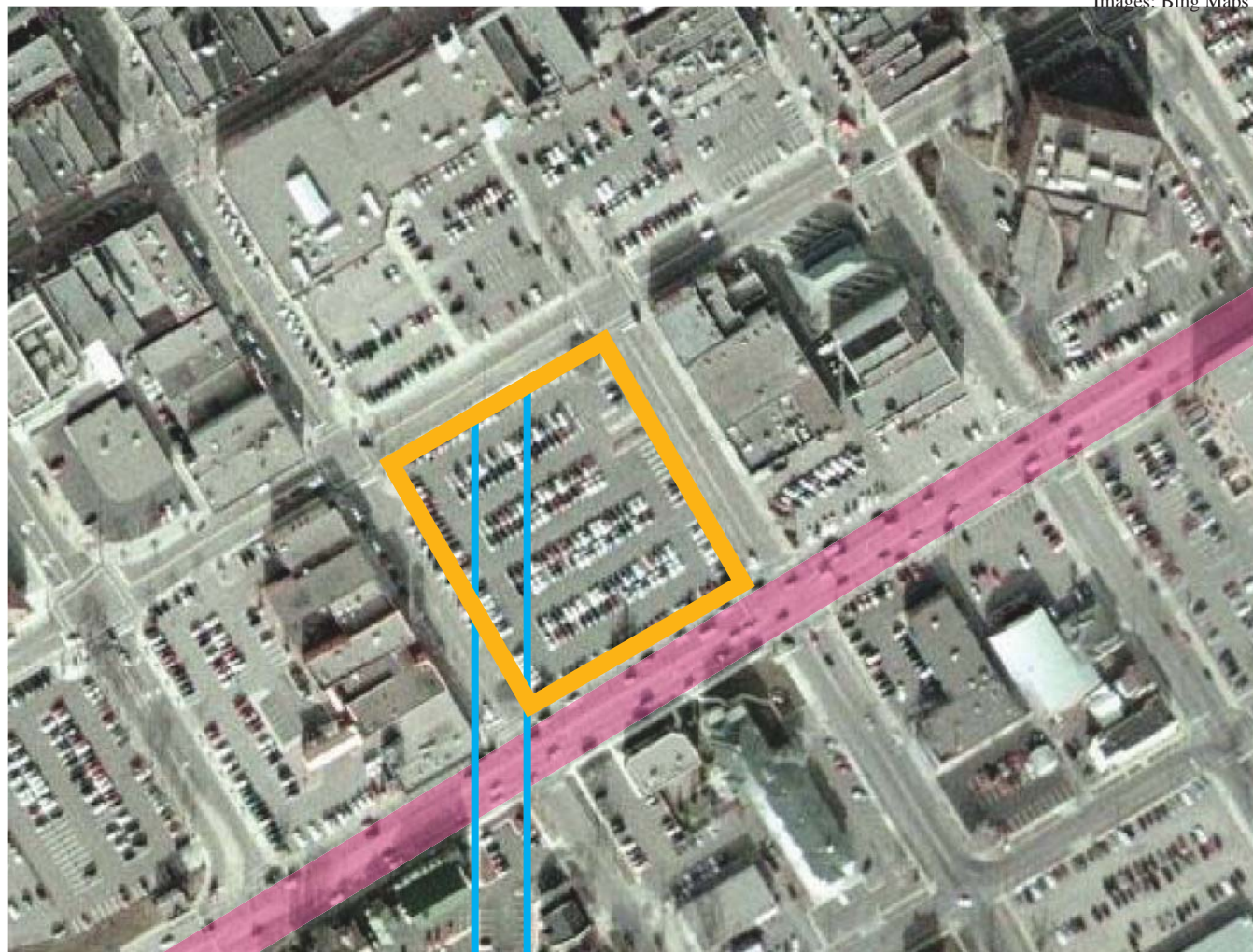
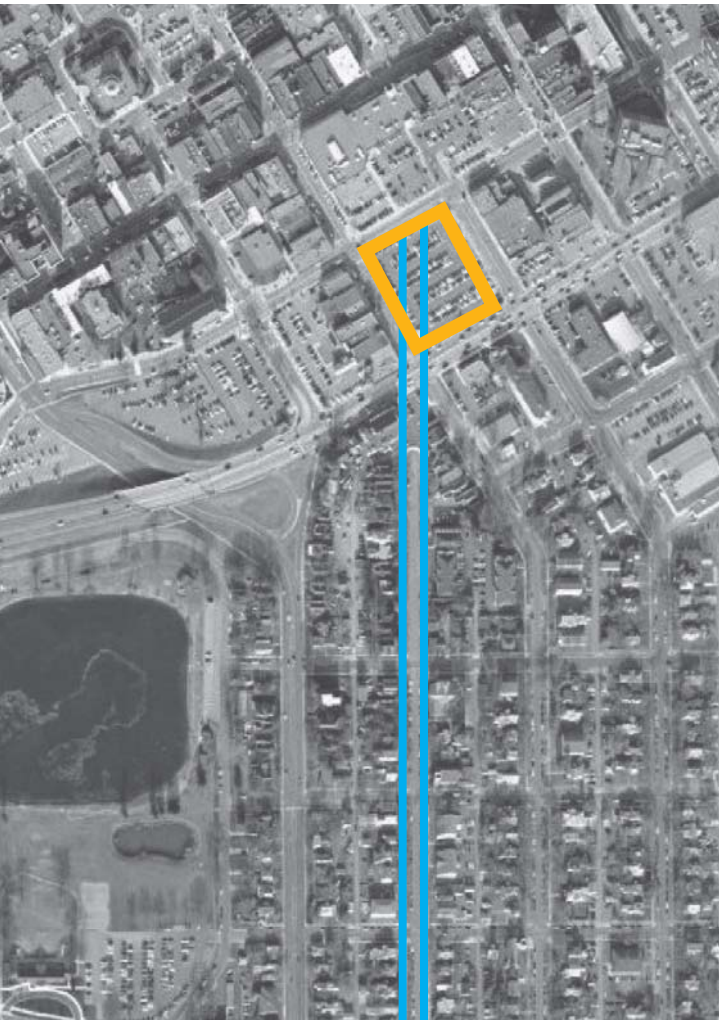
Site - downtown St. Cloud, Minnesota

Images: Bing Maps





Site - Connect residential neighborhood to downtown



Images: Bing Maps





Case study - Unites d'habitation Marseilles, France Le Corbusier

embrace all aspects of life

live/work/play

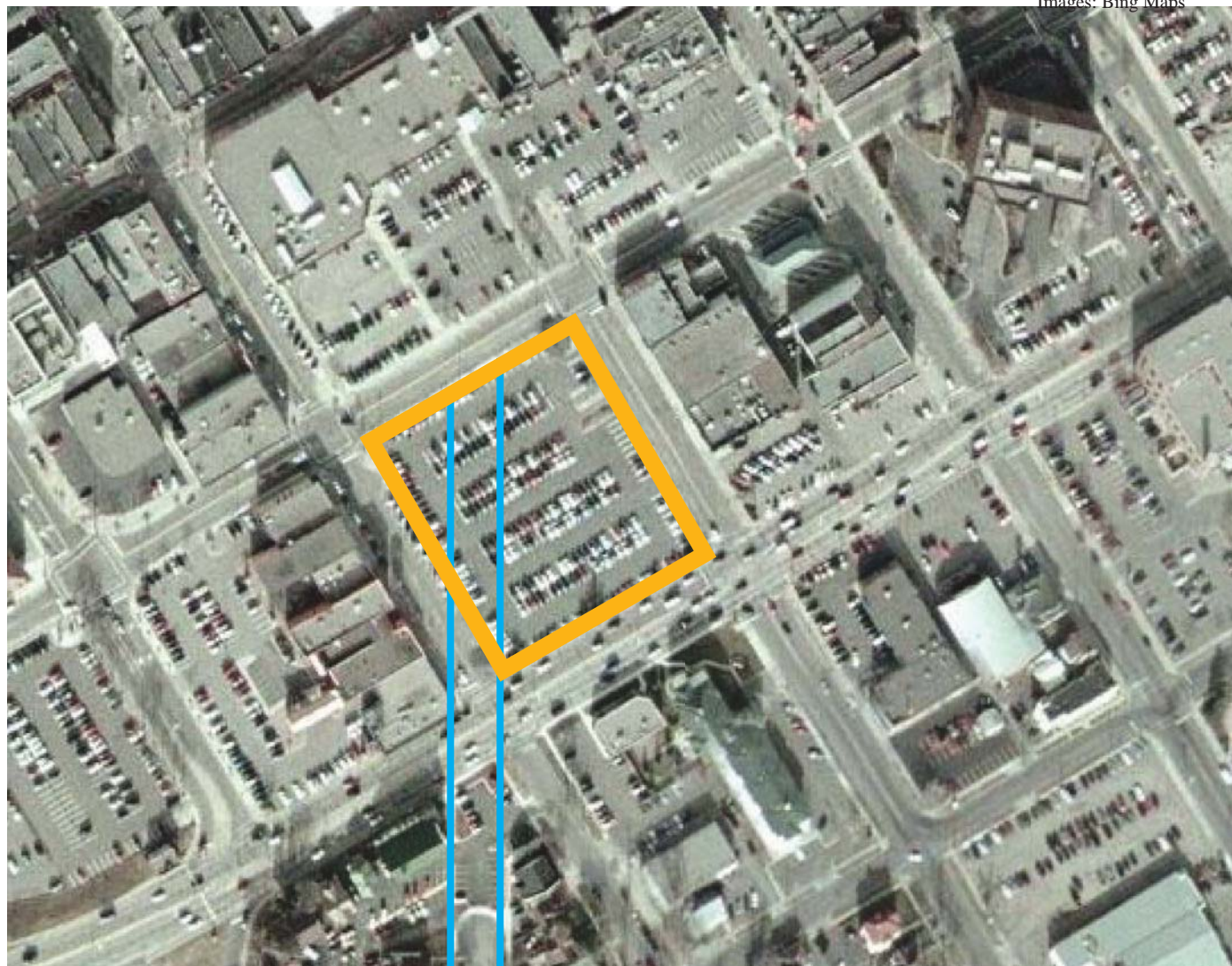
solved issues

“main street”



"main street"

Connection





Case study - Midtown Exchange Minneapolis, MN

embrace all aspects of life

live/work/play

international market

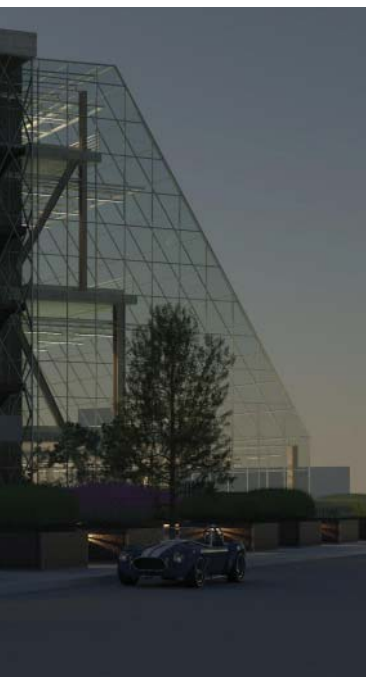
sense of community





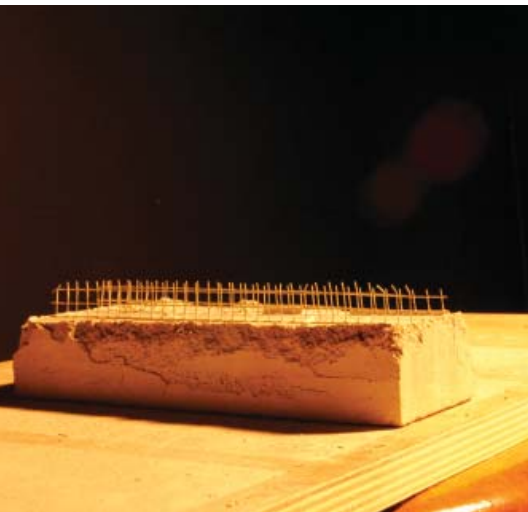
Program

- residential housing
- retail/commercial spaces
- food court
- market
- vertical gardens
- green spaces
- classrooms

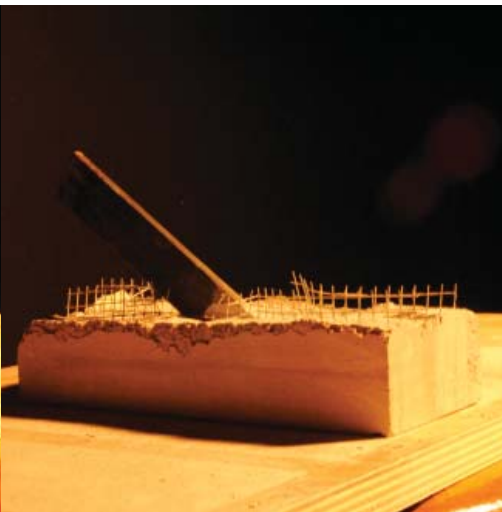




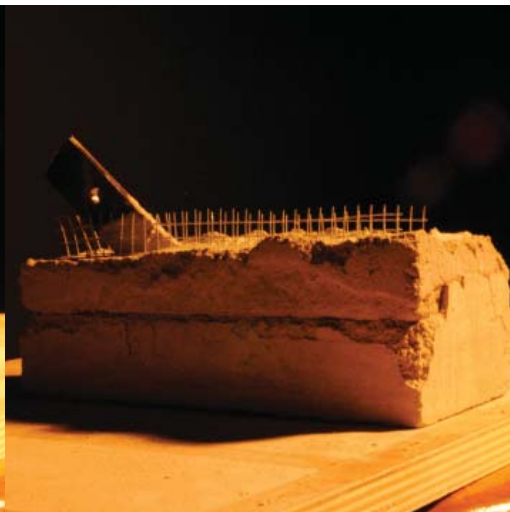
Parti



same



courage



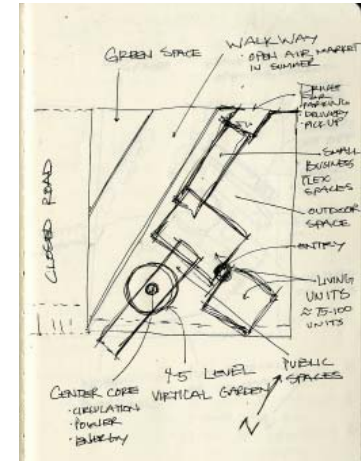
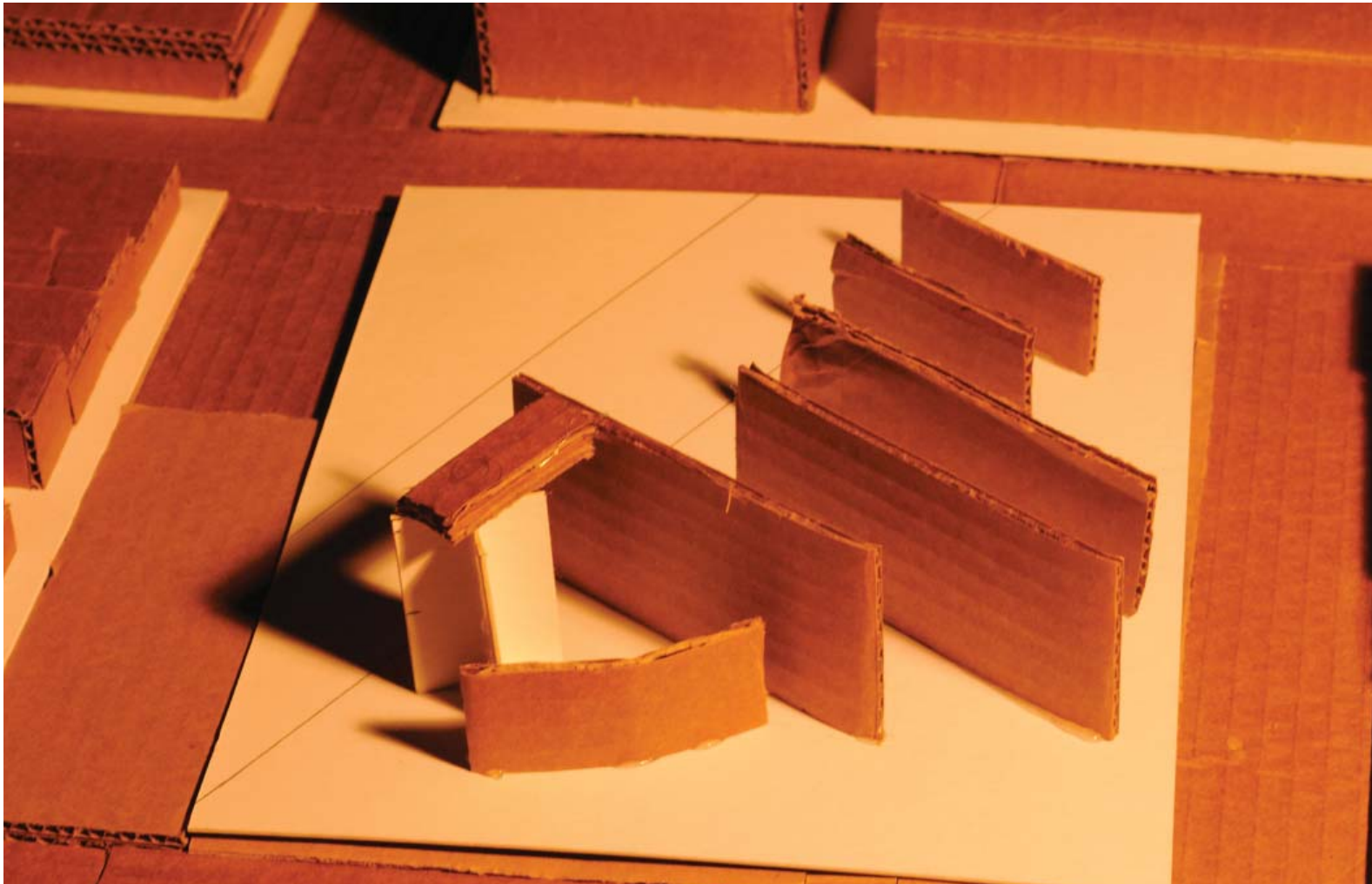
embedded



accepted

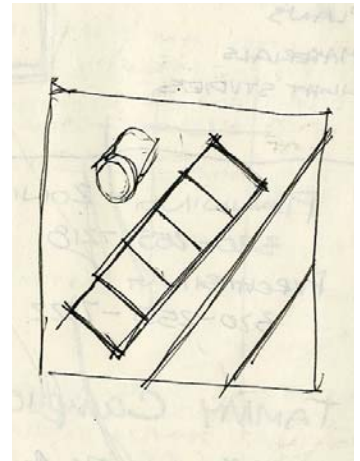
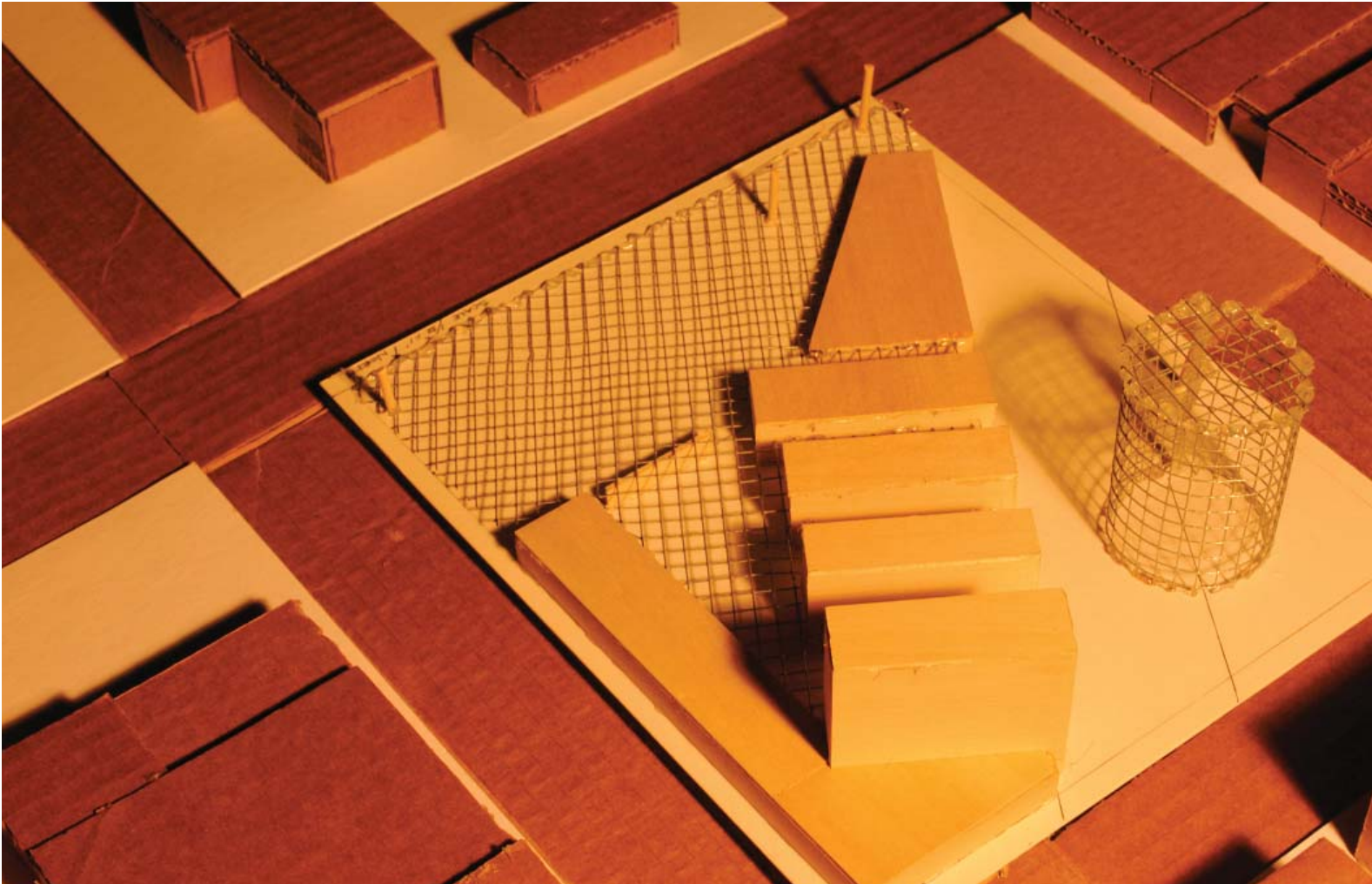


Process model/sketches



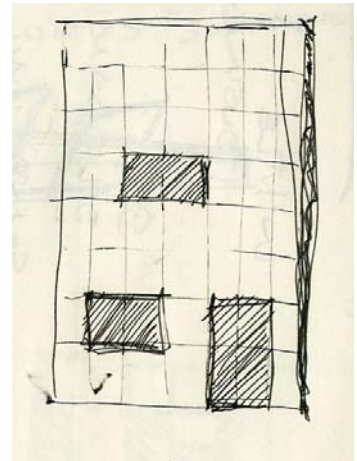
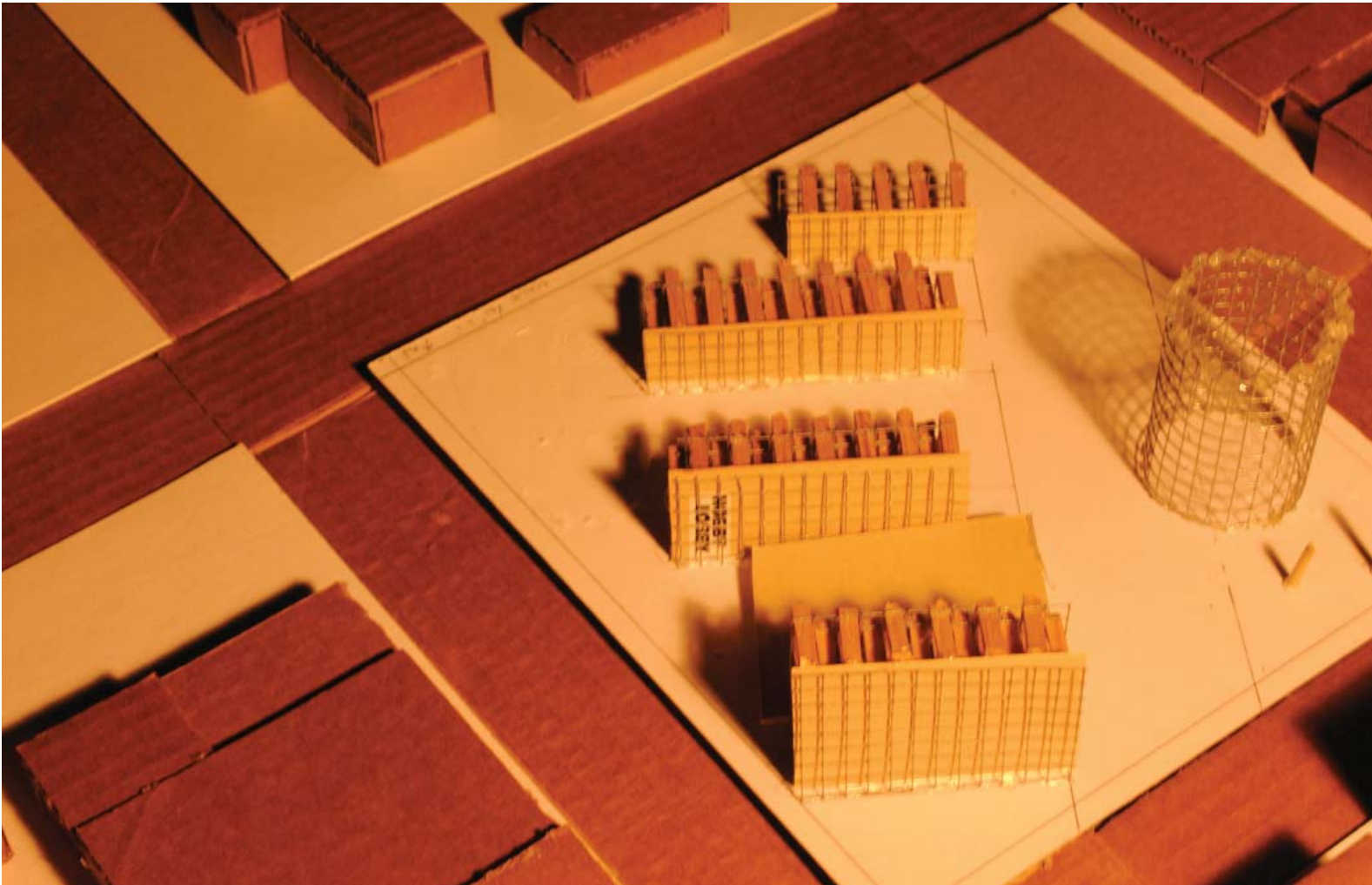


Process model/sketches



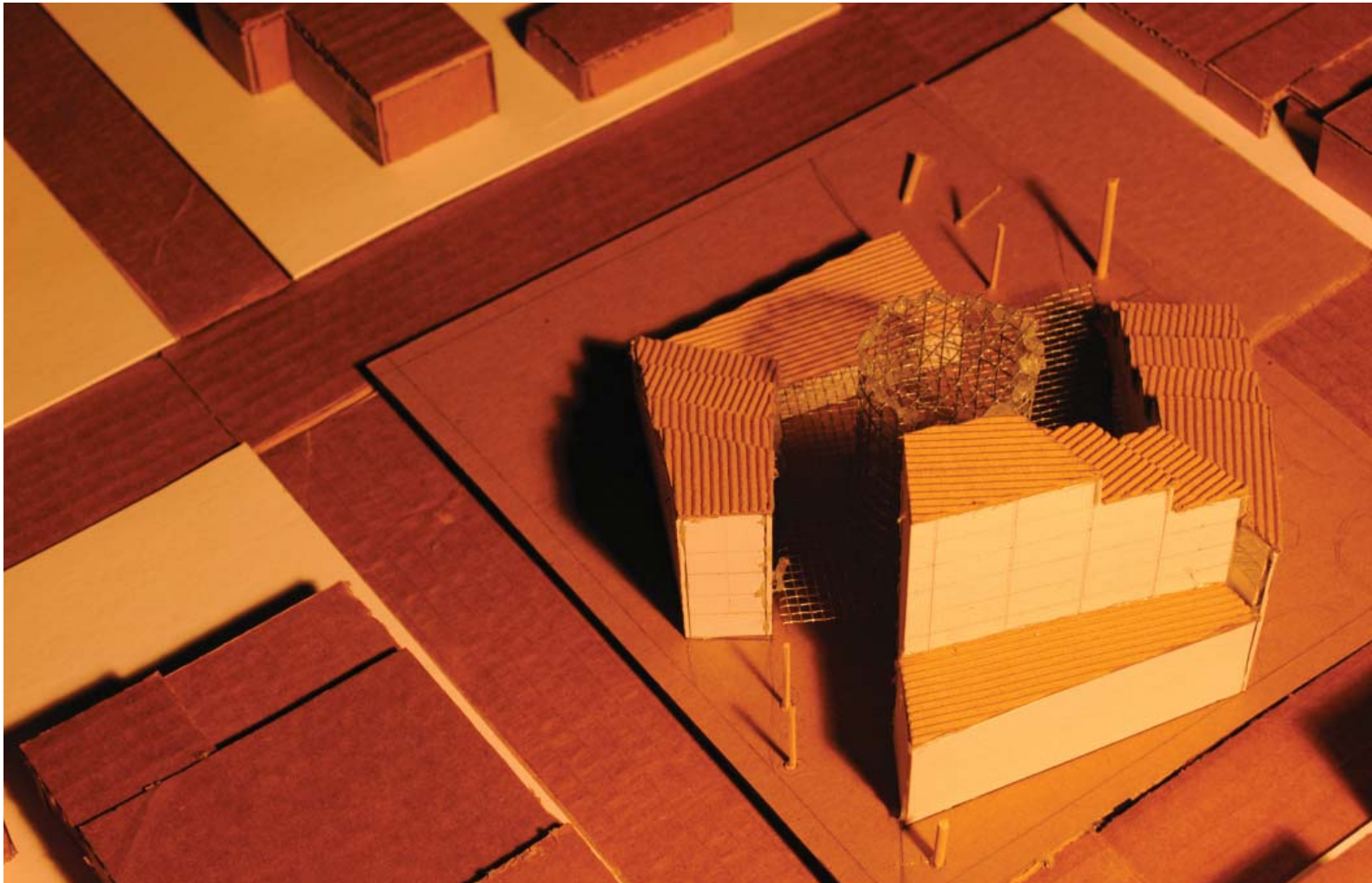


Process model/sketches



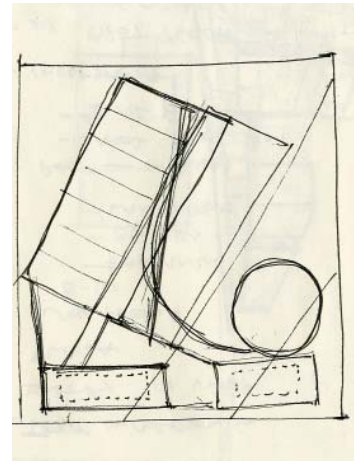


Process model/sketches





Process model/sketches





Process model

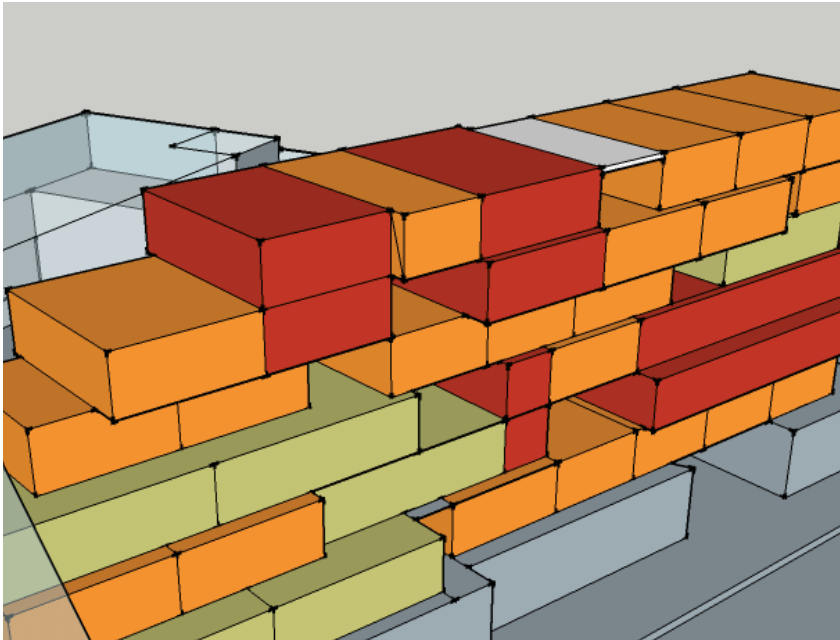
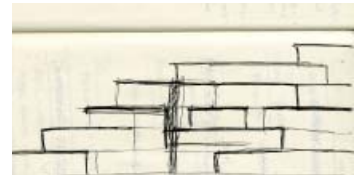
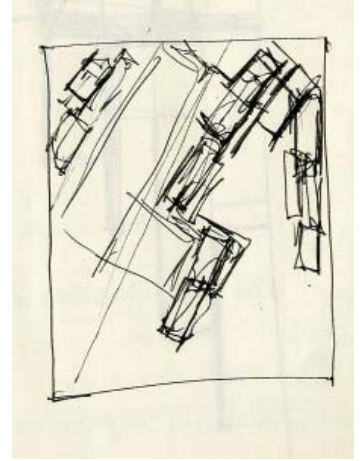


Image: http://www.galenfrysinger.com/vermont_granite_mining.htm

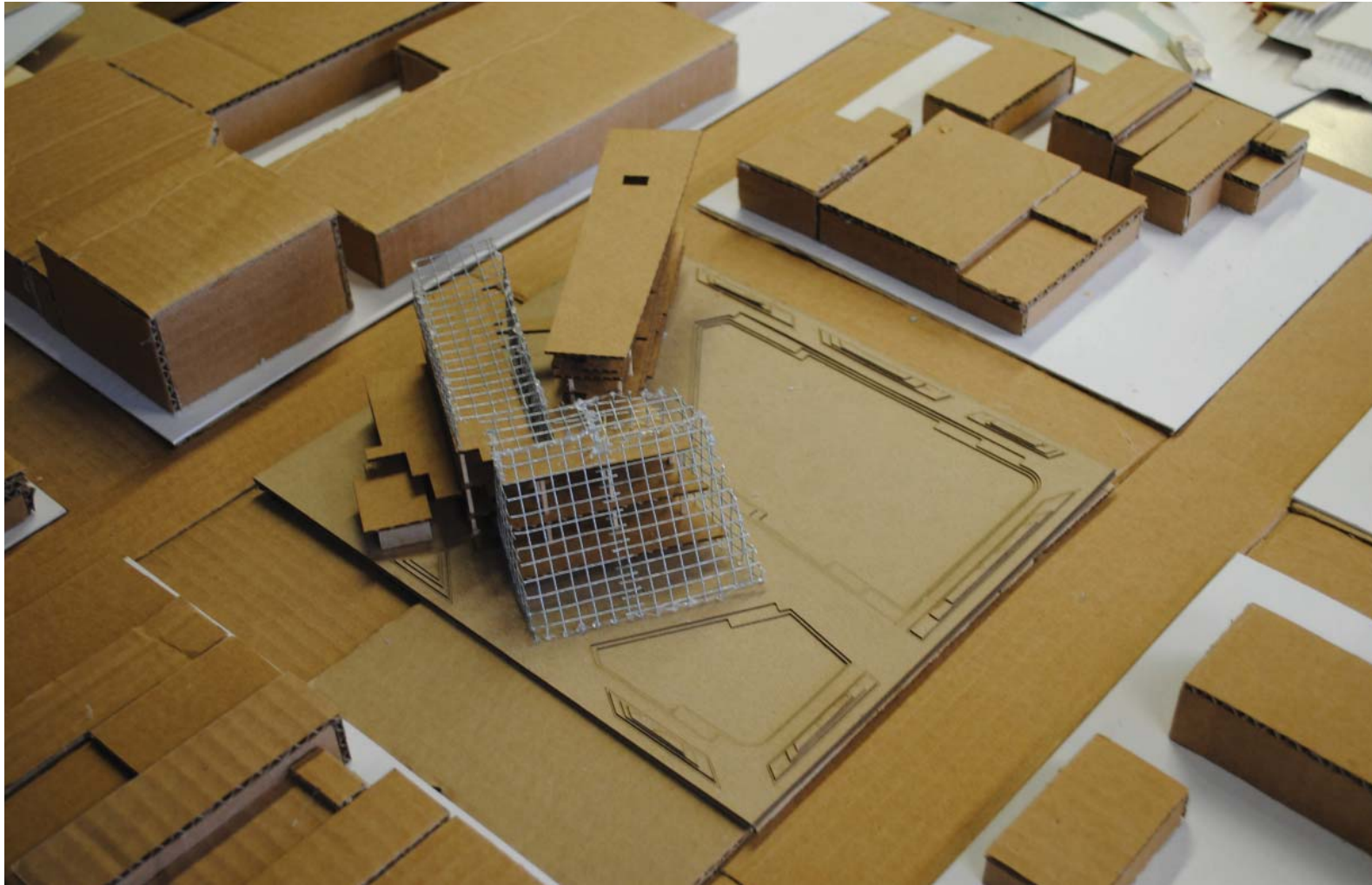


Process model/sketches



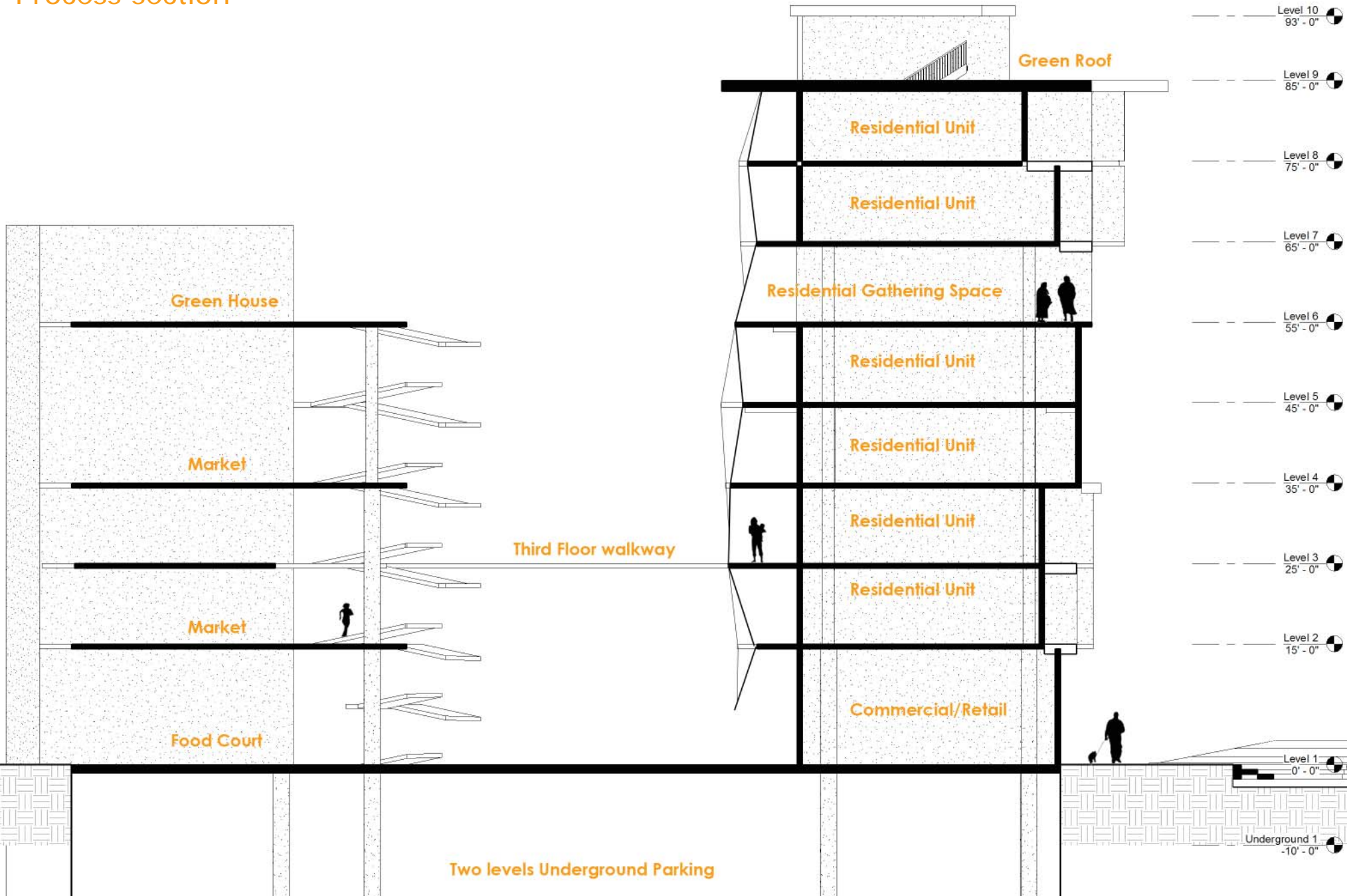


Process model/sketches





Process section



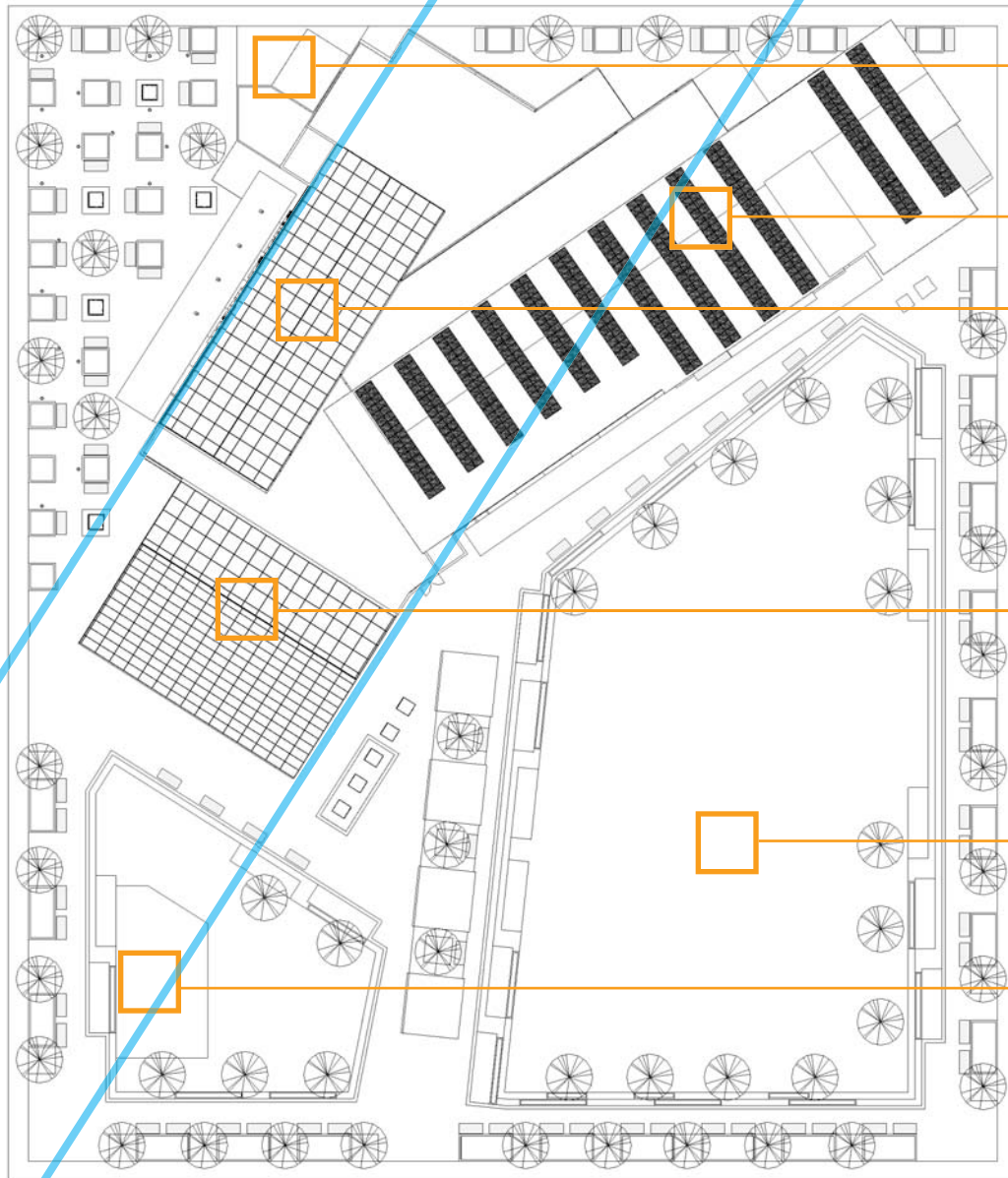


Final design





Site plan



"main street" connection

Underground parking & garbage pick-up

Solar hot water heaters on green roof

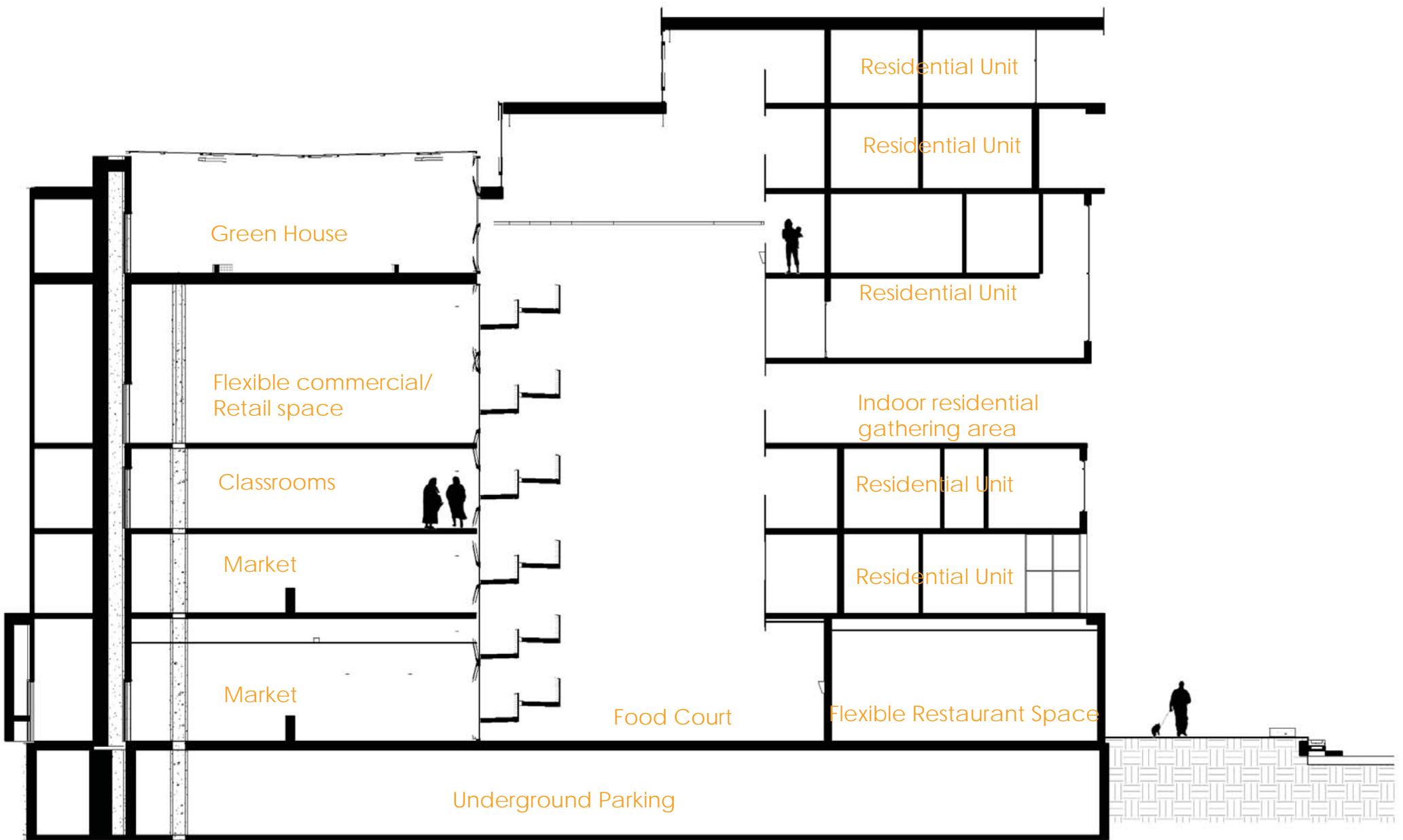
Sixth floor green house

Vertical garden spaces

Open playing field

Playground







Section One

Section Two

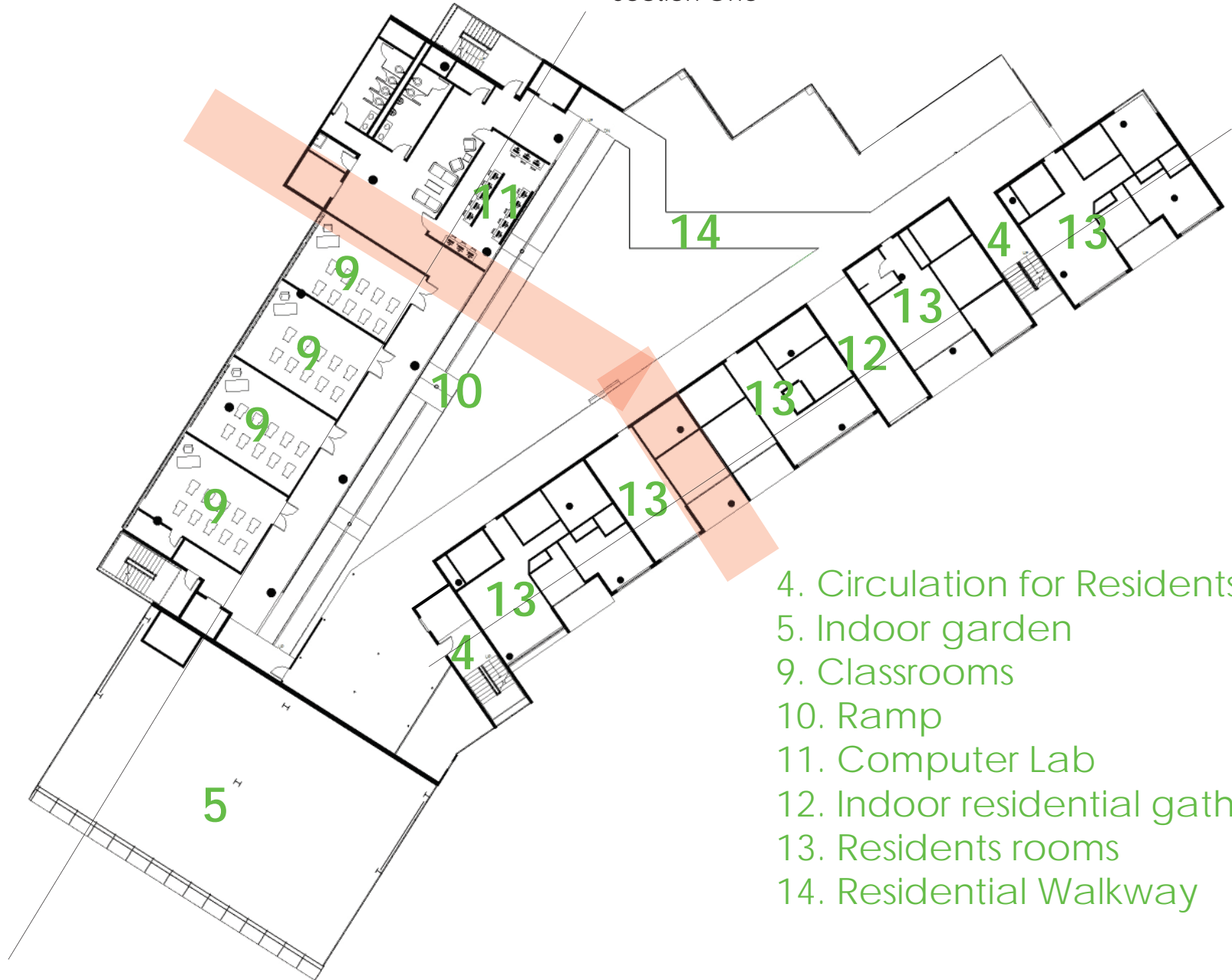


- 1. Food Court/Atrium
- 2. Flexible Restaurant spaces
- 3. Flexible Retail Space
- 4. Circulation for Residents
- 5. Indoor garden plots
- 6. Market
- 7. Loading dock/garbage
- 8. Public Entrance
- 10. Ramp



Section One

Section Two



- 4. Circulation for Residents
- 5. Indoor garden
- 9. Classrooms
- 10. Ramp
- 11. Computer Lab
- 12. Indoor residential gathering area
- 13. Residents rooms
- 14. Residential Walkway

Third Floor
Education



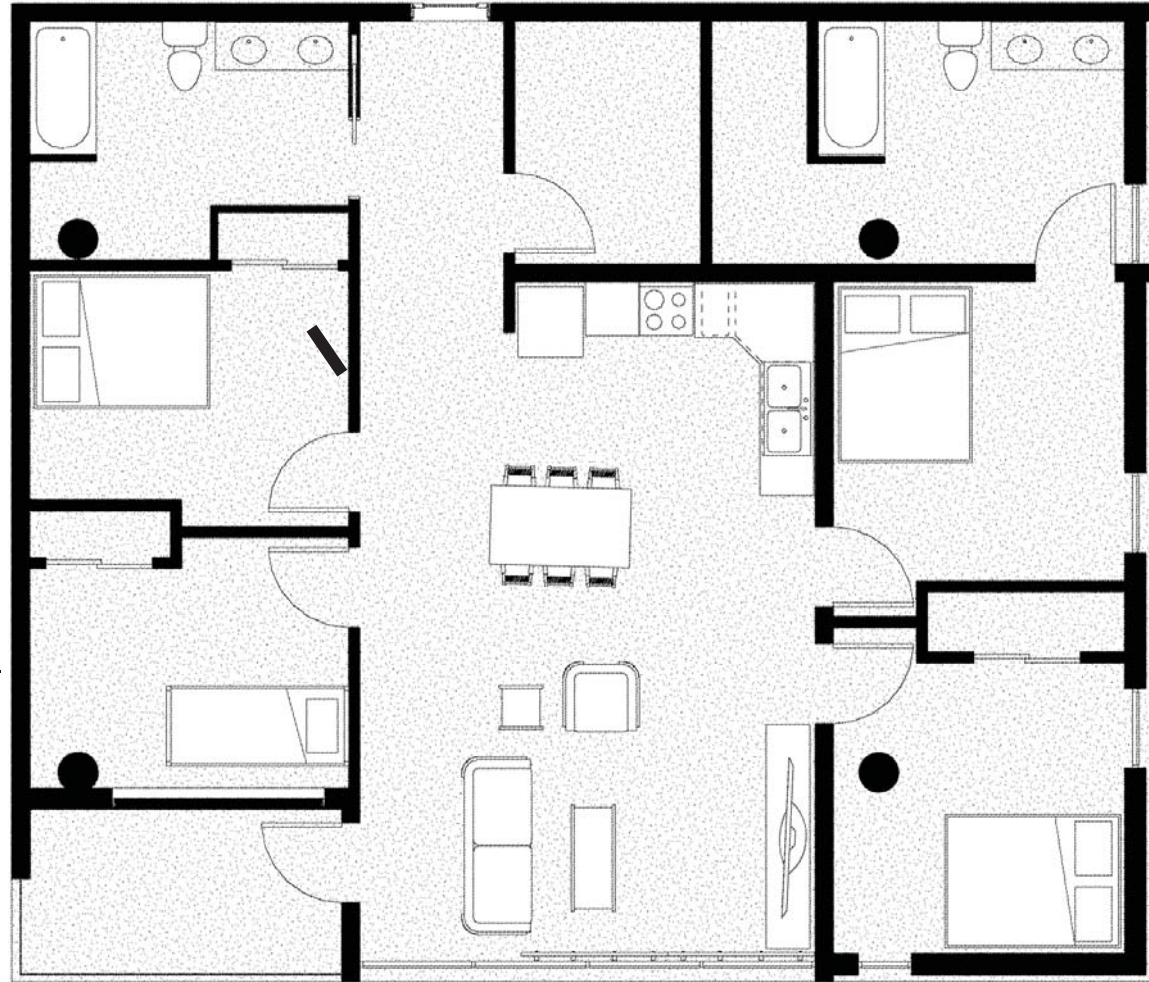


Sixth Floor
Garden



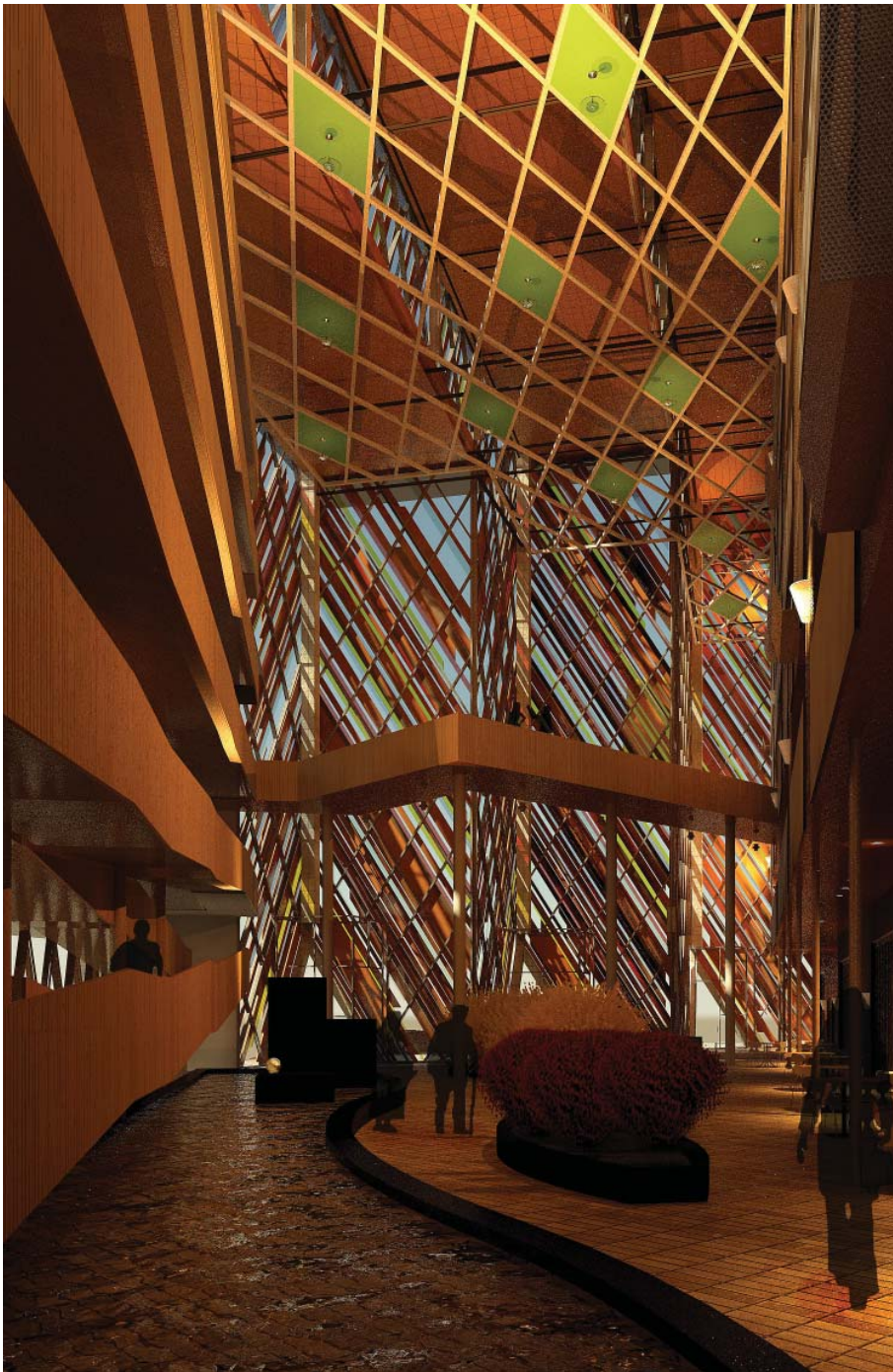


Residential units





Atrium/community space





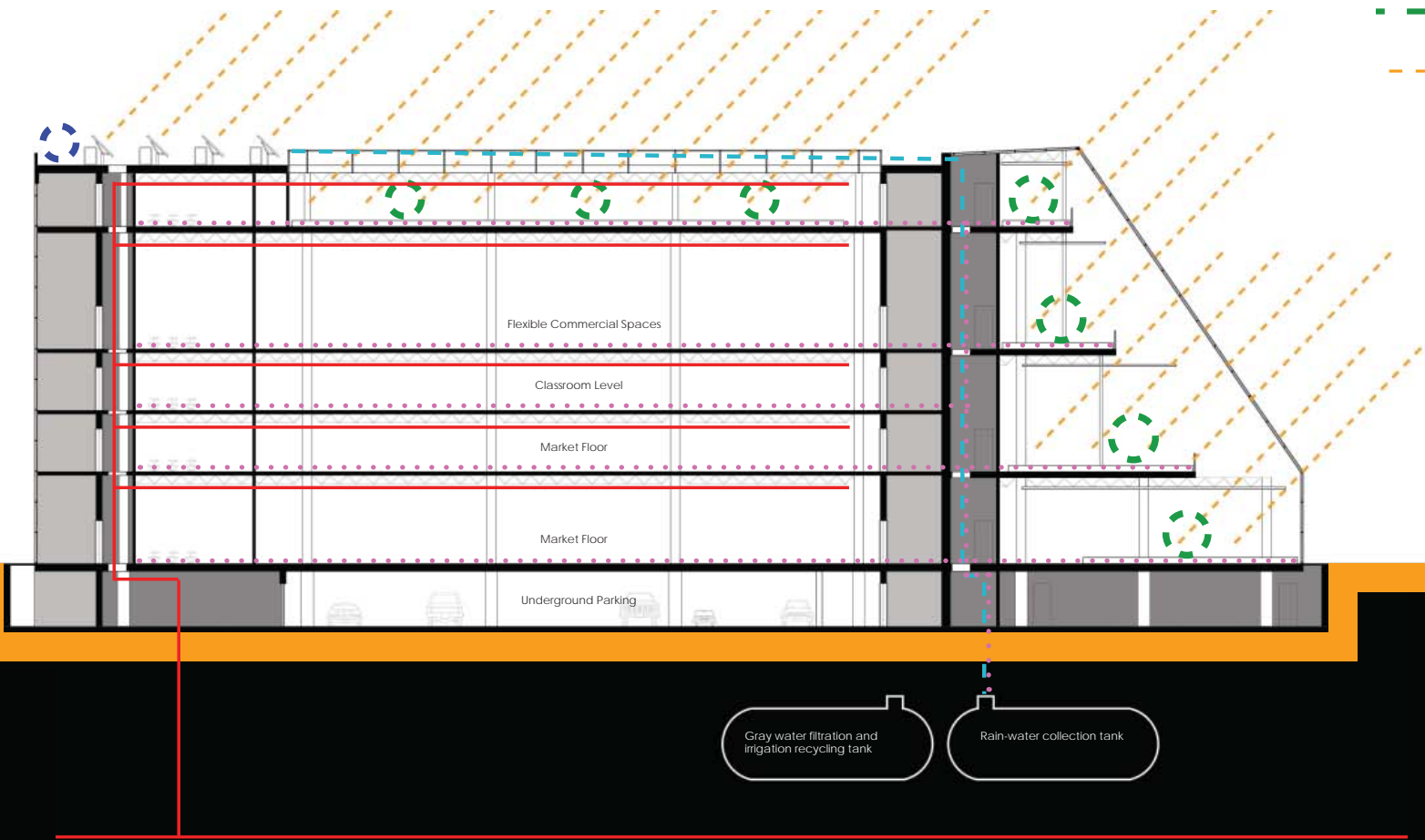
Atrium/Residential walkway





Systems/sustainability

- Indoor residential gathering area
- Mechanical
- Circulation
- Solar hot water panels with water tank location
- Rainwater collection
- Water re-distribution
- Indoor Garden
- Fall/Spring equinox Sun angle 46 degrees



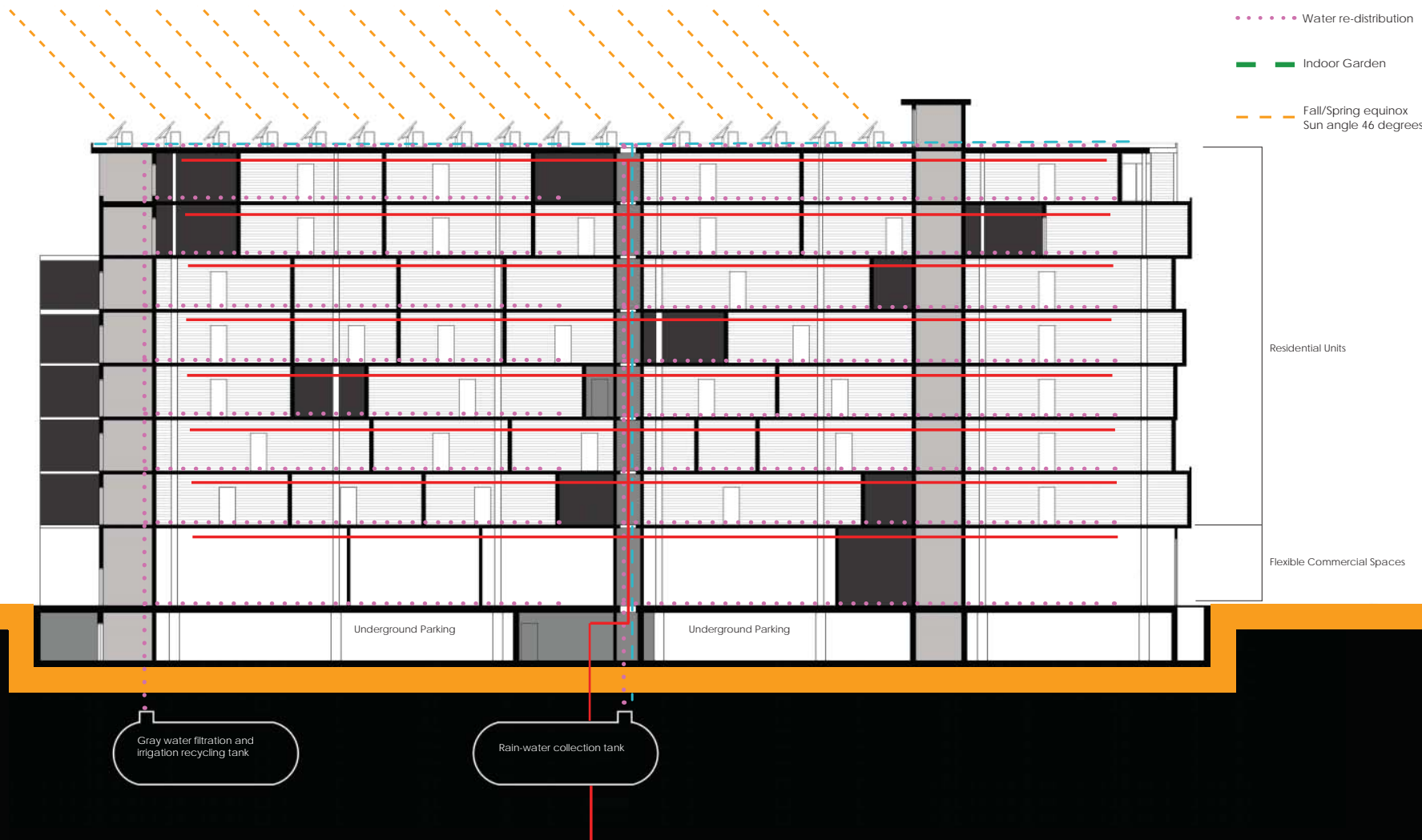
Gray water filtration and irrigation recycling tank

Rain-water collection tank



Systems/sustainability

- Indoor residential gathering area
- Mechanical
- Circulation
- Solar hot water panels with water tank location
- Rainwater collection
- Water re-distribution
- Indoor Garden
- Fall/Spring equinox Sun angle 46 degrees







Bibliography

Bing Maps

EPA, (2006, August). Former sears building. Retrieved from http://www.epa.gov/brownfields/success/minneapolis_mn_BRAG.pdf

French, hilary. (2008). Key urban housing of the twentieth century. New York, NY: W.W. Norton Company.

http://www.galenfrysinger.com/vermont_granite_mining.htm

