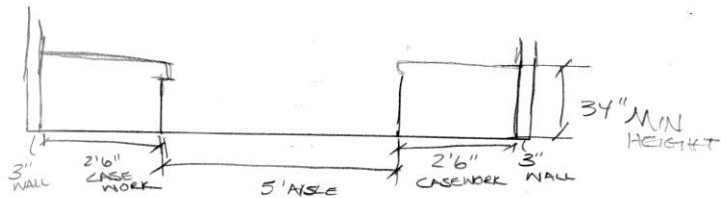


ReArrange

Process

# 2.10.10

## BASIC LAB MODULE



- 10'6" - SINGLE MODULE
- 21' - 2 MODULES - MORE ARRANGABLE
- 32'6" - 3 MODULES

DEPTH  
28' - 33'  
BASED ON  
FF&E

MOST EFFICIENT - 3-DIMENSIONAL

↳ ALLOW FOR FLOOR TO FLOOR RELATIONS

$$5 \times 17.91 \times 239.96$$

ARCHITECTURAL STABILITY & INSTABILITY

- DEFINE SKETCHES

## STABILITY - POSITIVE

- RELIABLE
- PATTERN
- RHYTHM
- WEDGE

## STABILITY - NEGATIVE

- FIXATED
- STAGNANT

## INSTABILITY - NEGATIVE

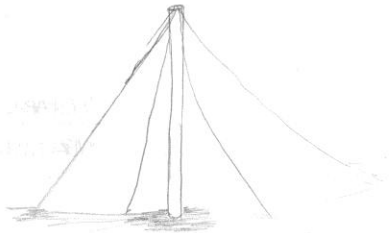
- FAILURE
- COLLAPSE
- SILTS

## INSTABILITY - POSITIVE

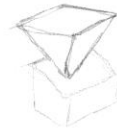
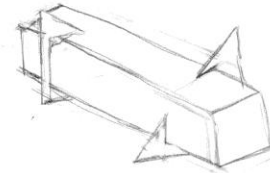
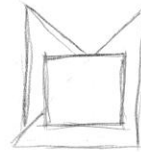
- VERTISTILE
- MOVEMENT

# 2.10.10

CAN BE SEEN AS A POLE REMAINING STANDING THROUGH THE USE OF GUY WIRES. ONE DEPENDS ON THE OTHER. POLE ALONE IS UNSTABLE, AS WIRES SERVE NO PURPOSE WITHOUT THE POLE THEY NEED EACH OTHER.

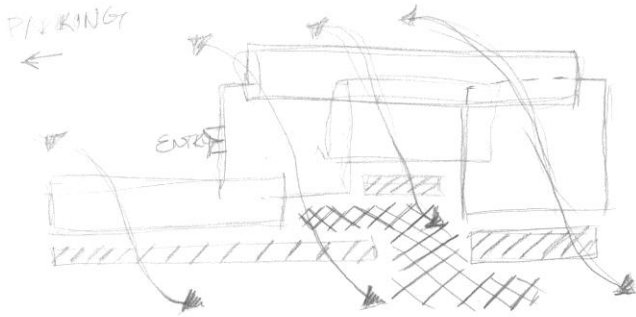


RUNNING FENCE



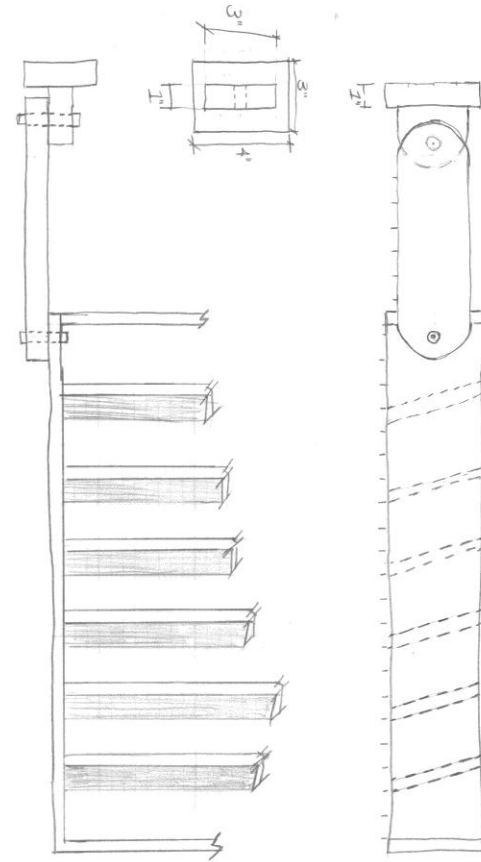
- ARCHITECTURAL STABILITY ENCOMPASSES MANY DIMENSIONS
- IT CAN BE A EMOTIONAL FEELING THAT IS FELT UPON APPROACH AND ENTRY TO A BUILDING.
  - IT CAN BE A PHYSICAL BARRIER WHEN CHANGE IS REQUIRED

# 2.10.10



DIVISION LINE - BUSH/TREE - LONG DELIVERY  
ENTRY

SHADING ELEMENTS ON SOUTHERN EXP  
PROMOTE THE VENTILATION THROUGH  
VERTICAL SHADING ELEMENTS

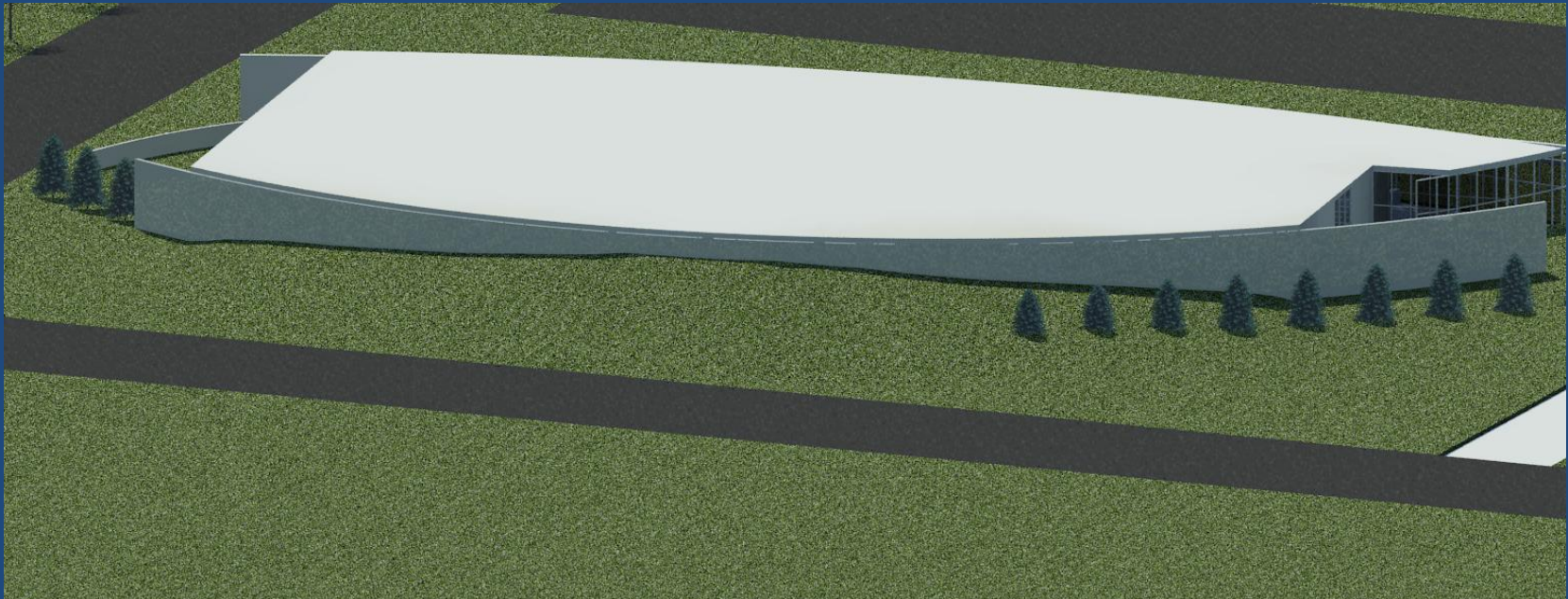


1/2 INCH

SHADING DEVICE

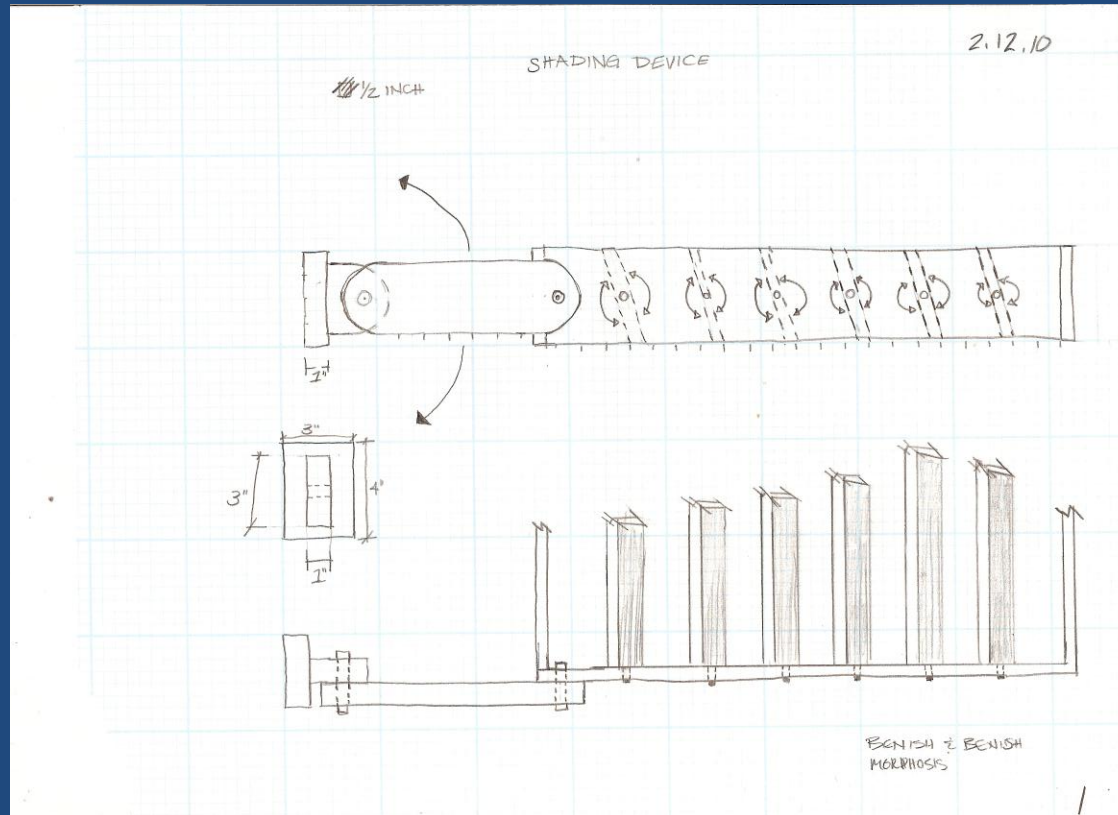
# 2.12.10

- Introduction of the berming



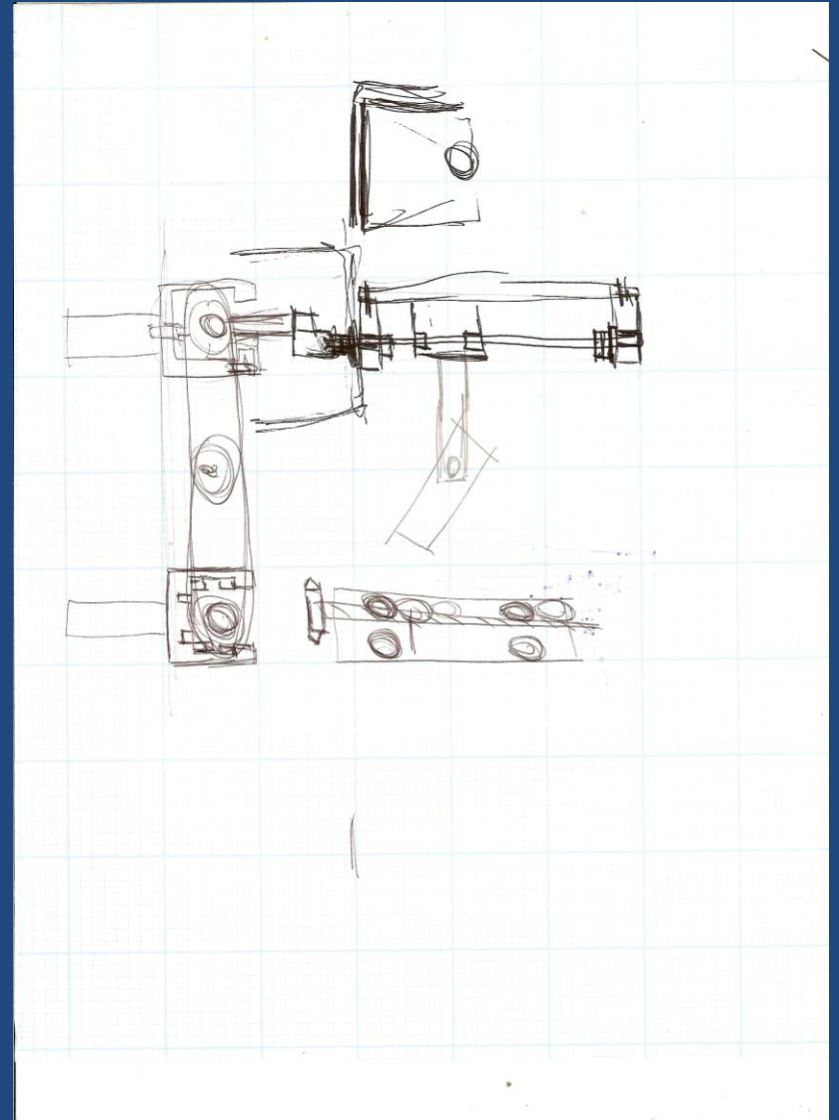
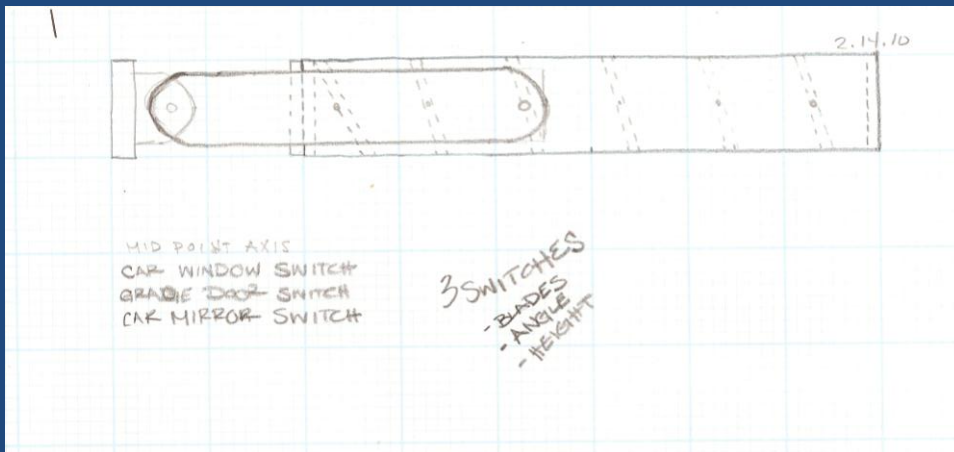
# 2.13.10

- Sunshade experimentation



# 2.13.10

- Sunshade





# 2.13.10

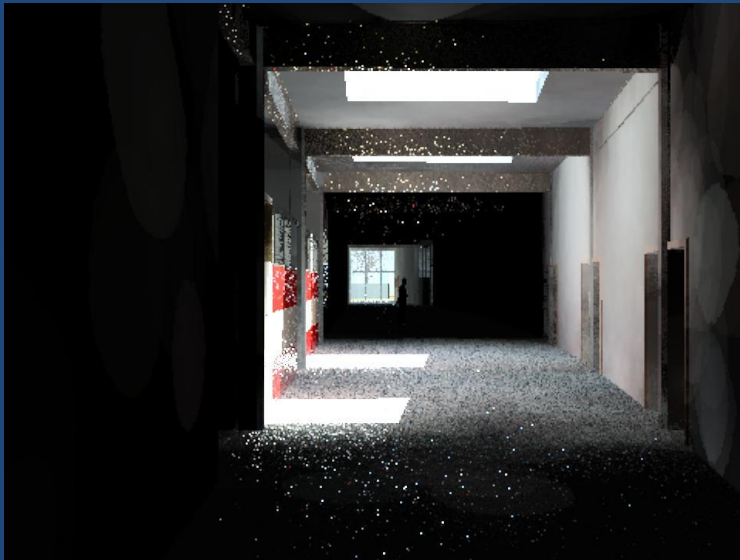
- Sunshade



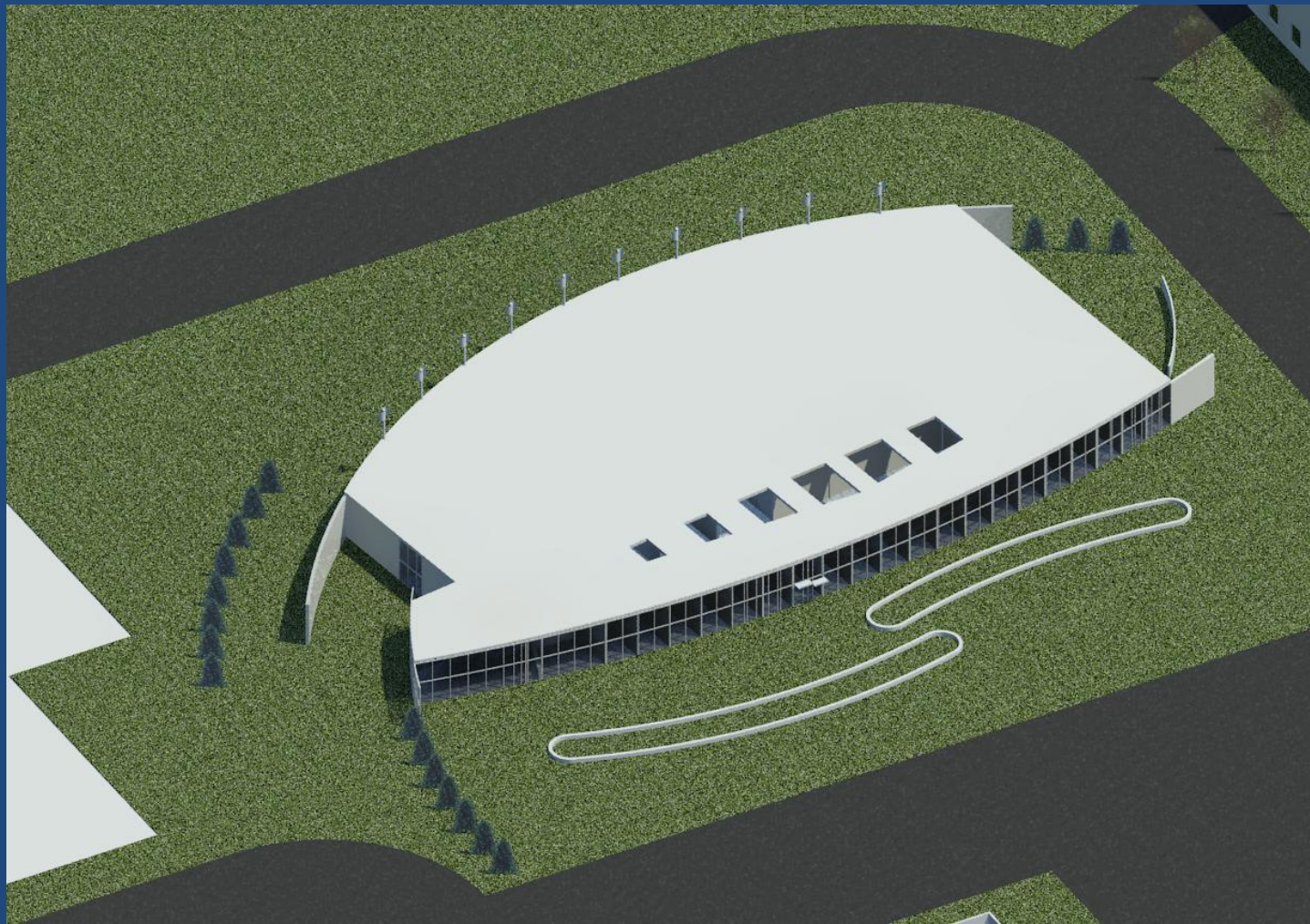


# 2.17.10

- Addition of a Skylight



2.19.10



# 2.19.10

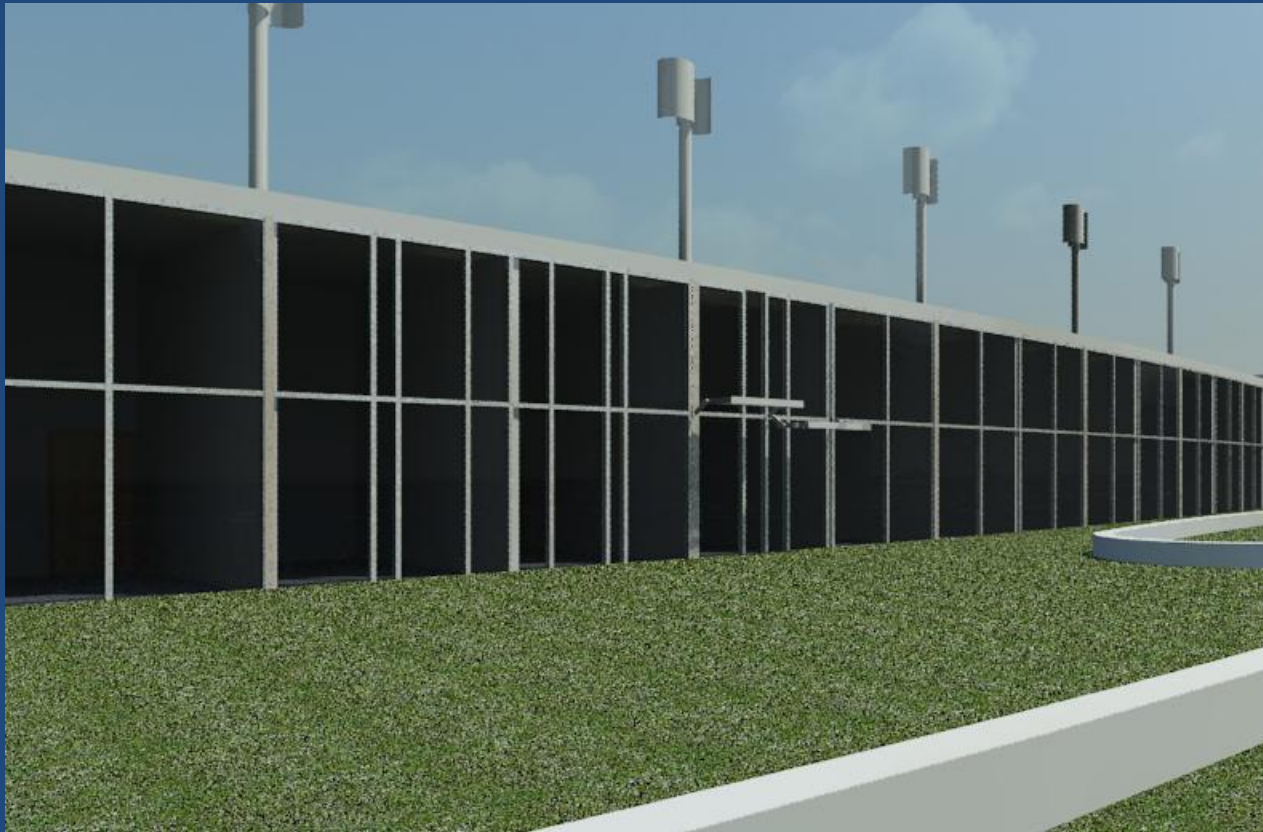
- Berm with turbines





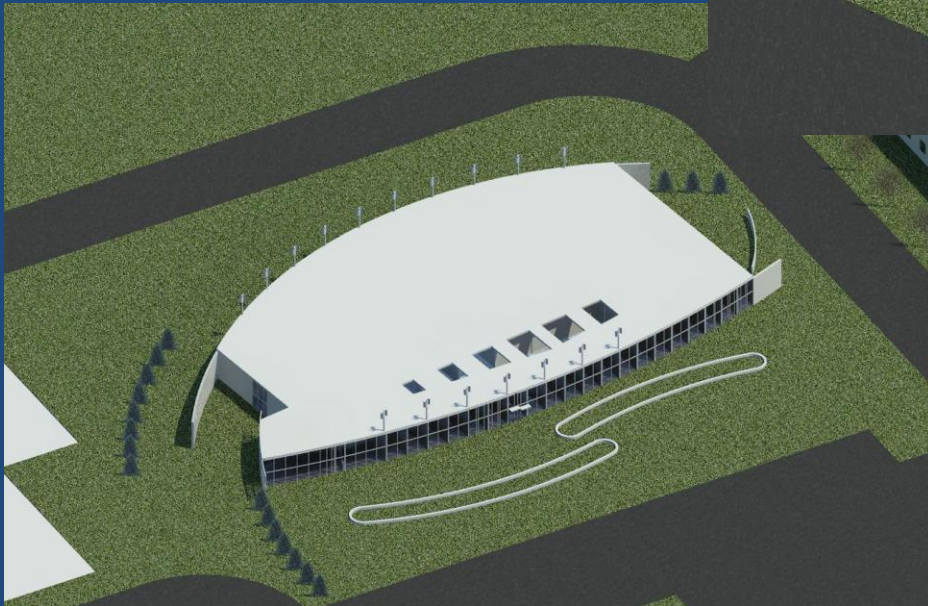
# 2.19.10

- Front with shade study



2.19.10

- Skylight Study



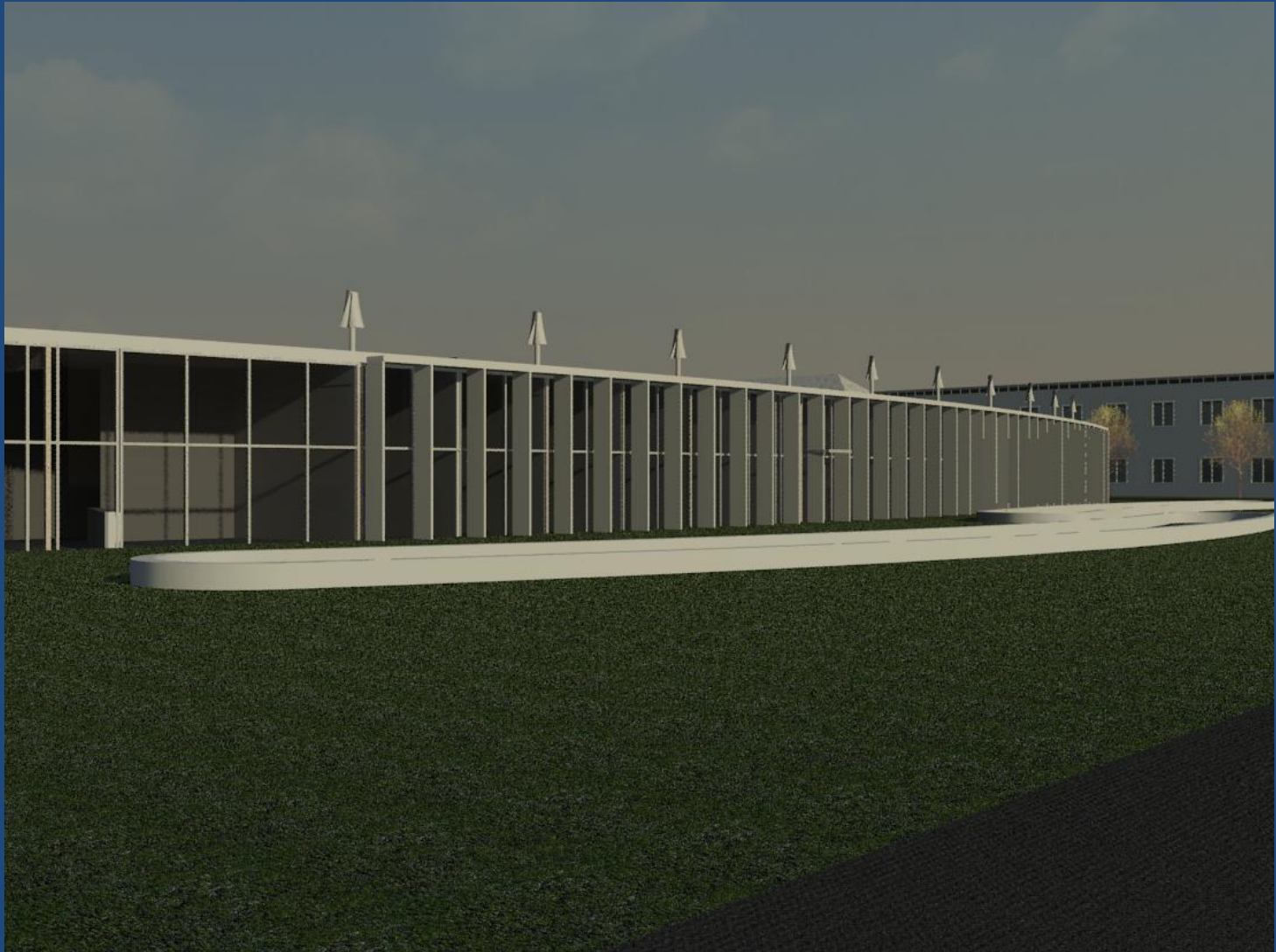


# 2.21.10

- Shroud Sunscreen Introduced



2.21.10





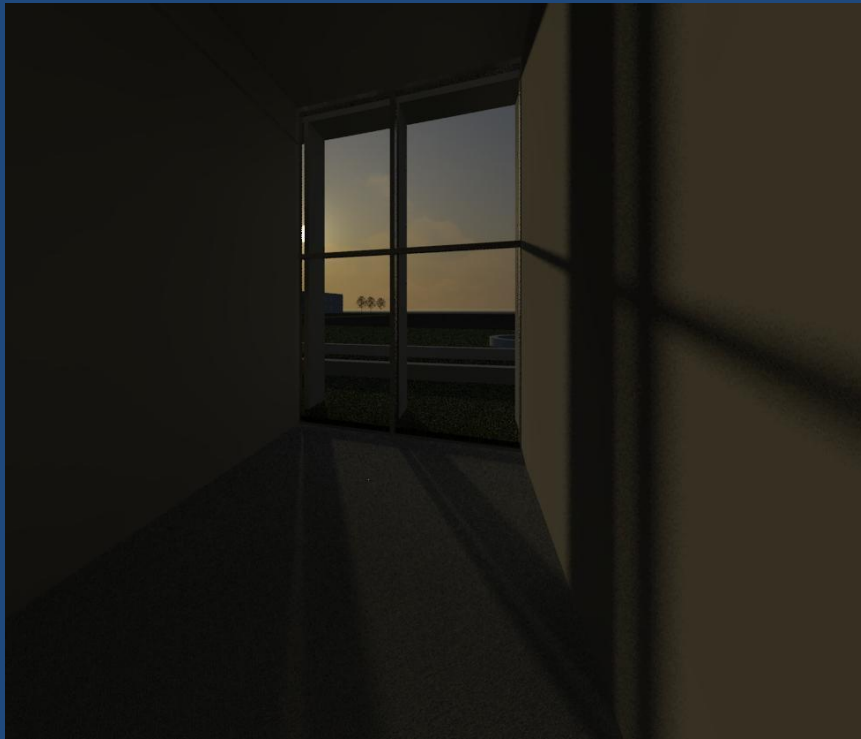
# 2.21.10

- Office Hall Development



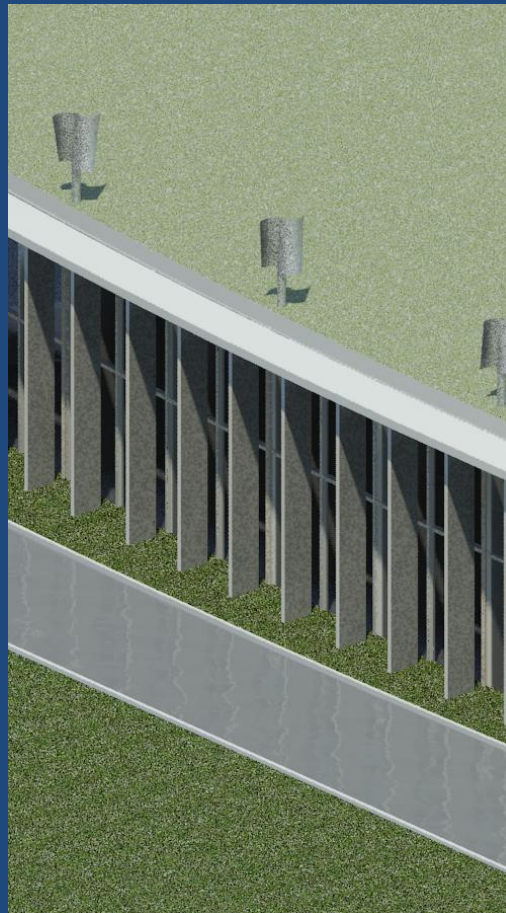
# 2.21.10

- New Shroud Analysis



# 2.22.10

- Shroud with turbines



# 2.22.10

- Shroud Studies
- 4ft Test





# 2.22.10

- Shroud Studies
- 6ft Test



# 2.22.10

- Pond development





# 2.22.10

- Pond development





2.24.10

- Shroud Final



# 2.24.10

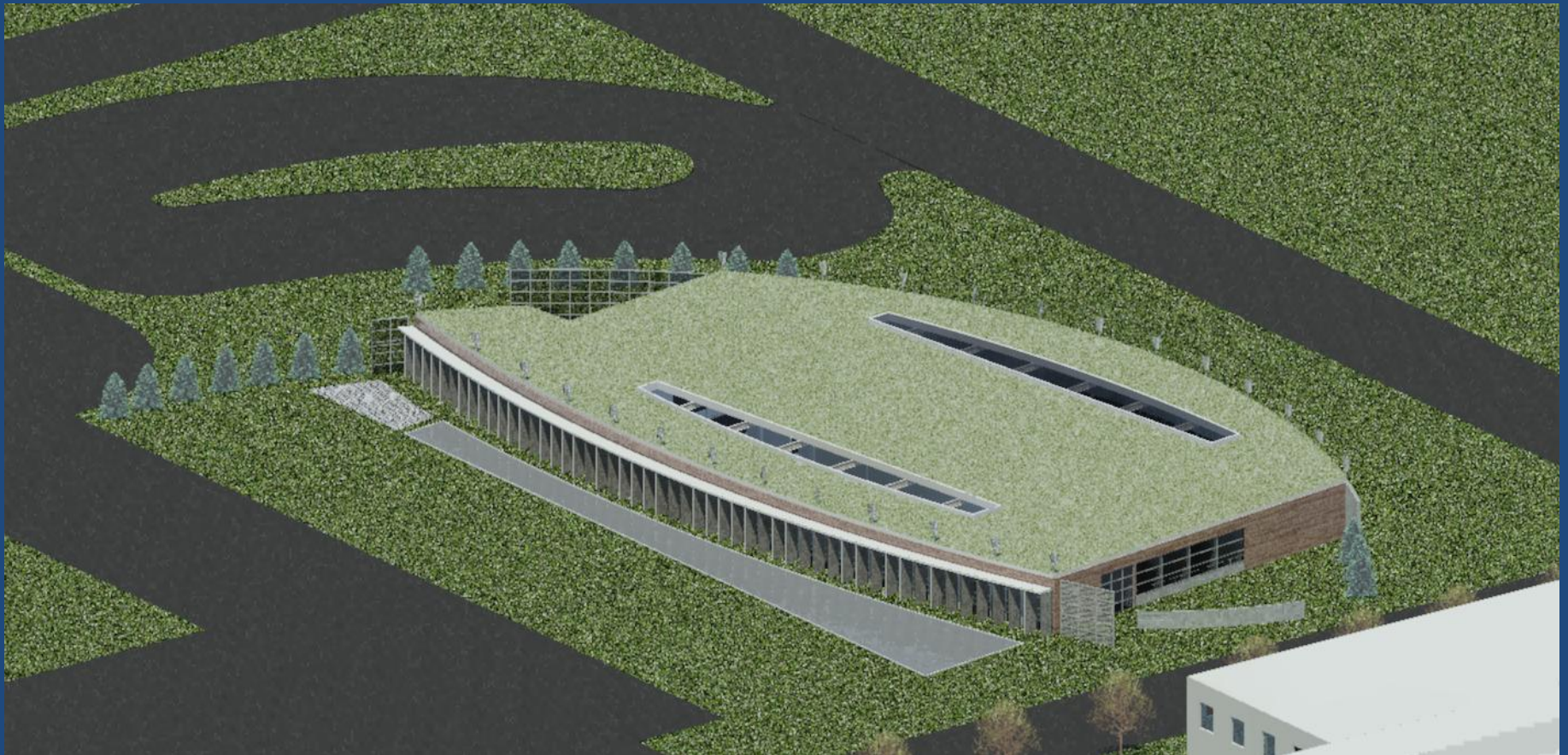
- Lab development with skylight





# 2.25.10

- Site development



# 2.25.10

- Material Studies





# 2.25.10

- Material Studies



# 2.25.10

- Material Studies





2.25.10

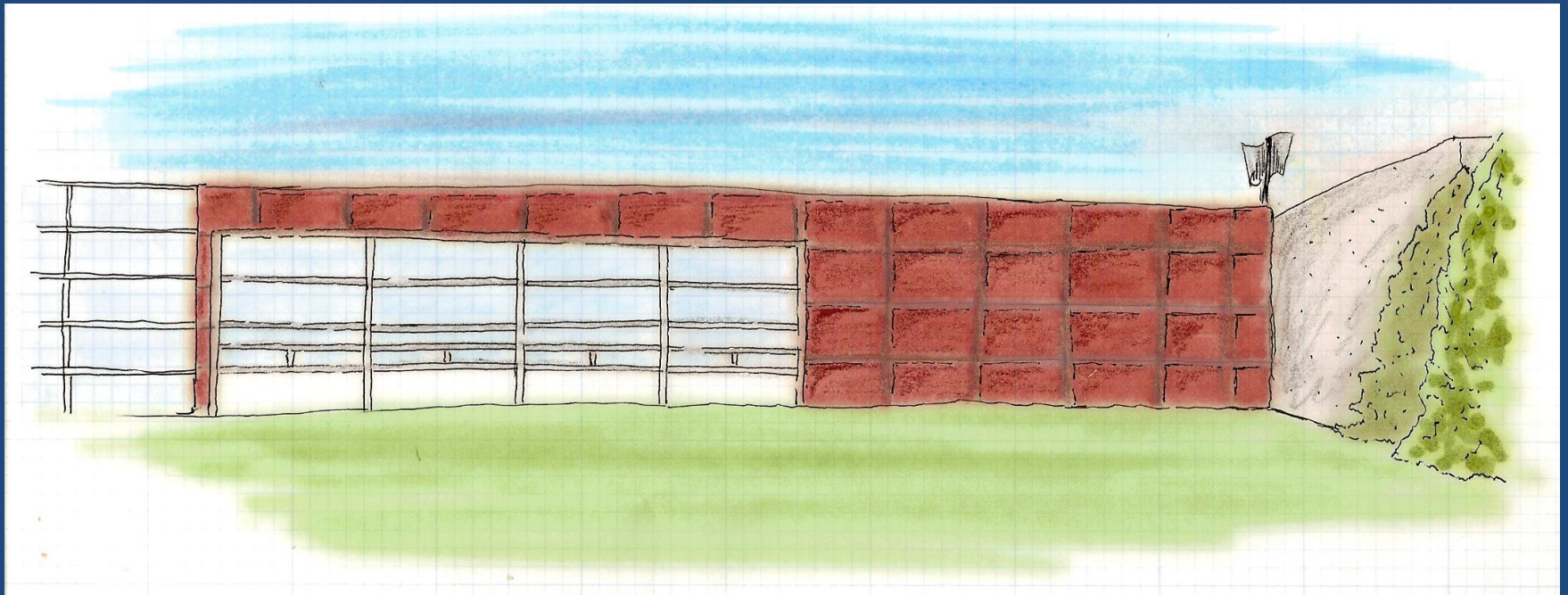
- Material Studies



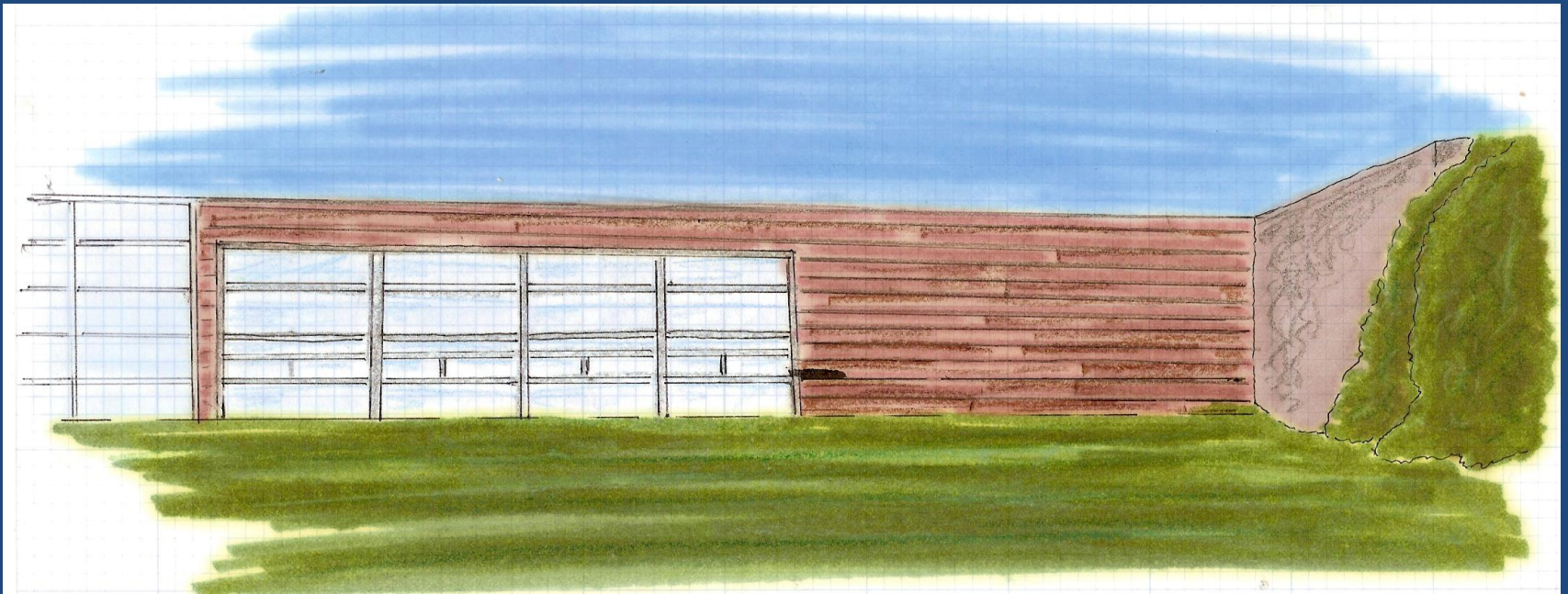


# 2.25.10

- Material Studies



2.25.10





# 2.25.10

- Material Studies



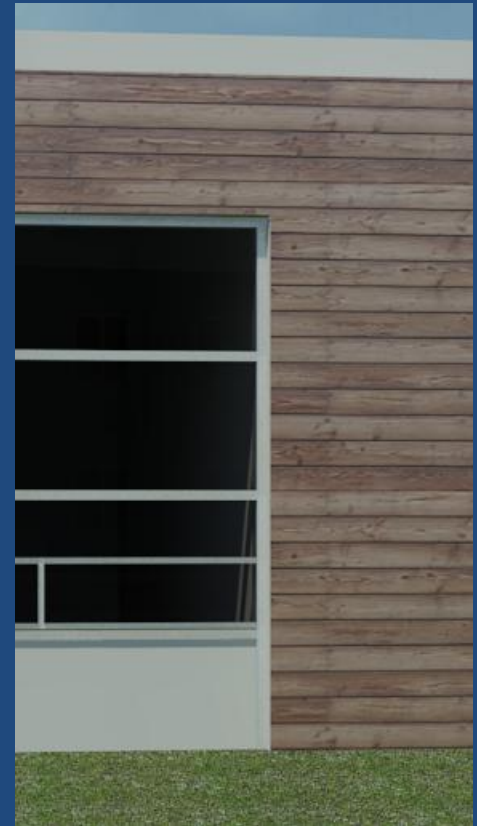
# 2.25.10

- Material Studies



# 2.25.10

- Material Studies





# 2.26.10

- Material Studies



# 2.26.10

- Material Studies





# 2.26.10

- Material Studies



# 2.26.10

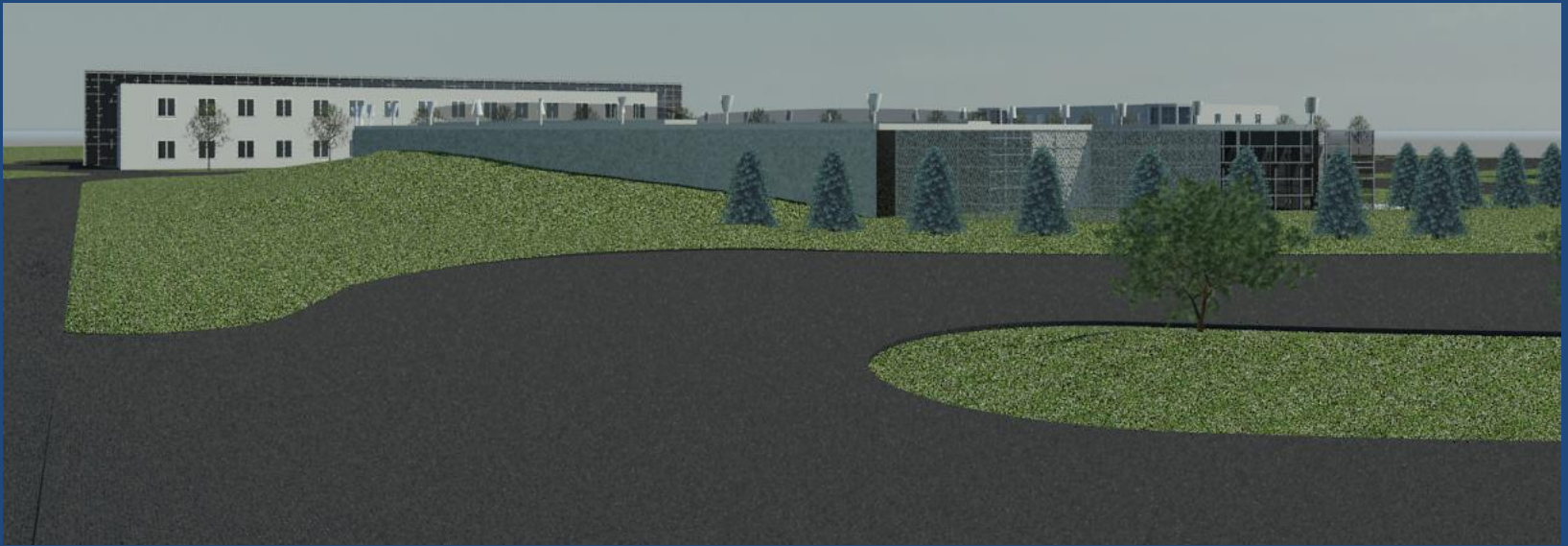
- Material Studies





# 3.2.10

- Parking Development





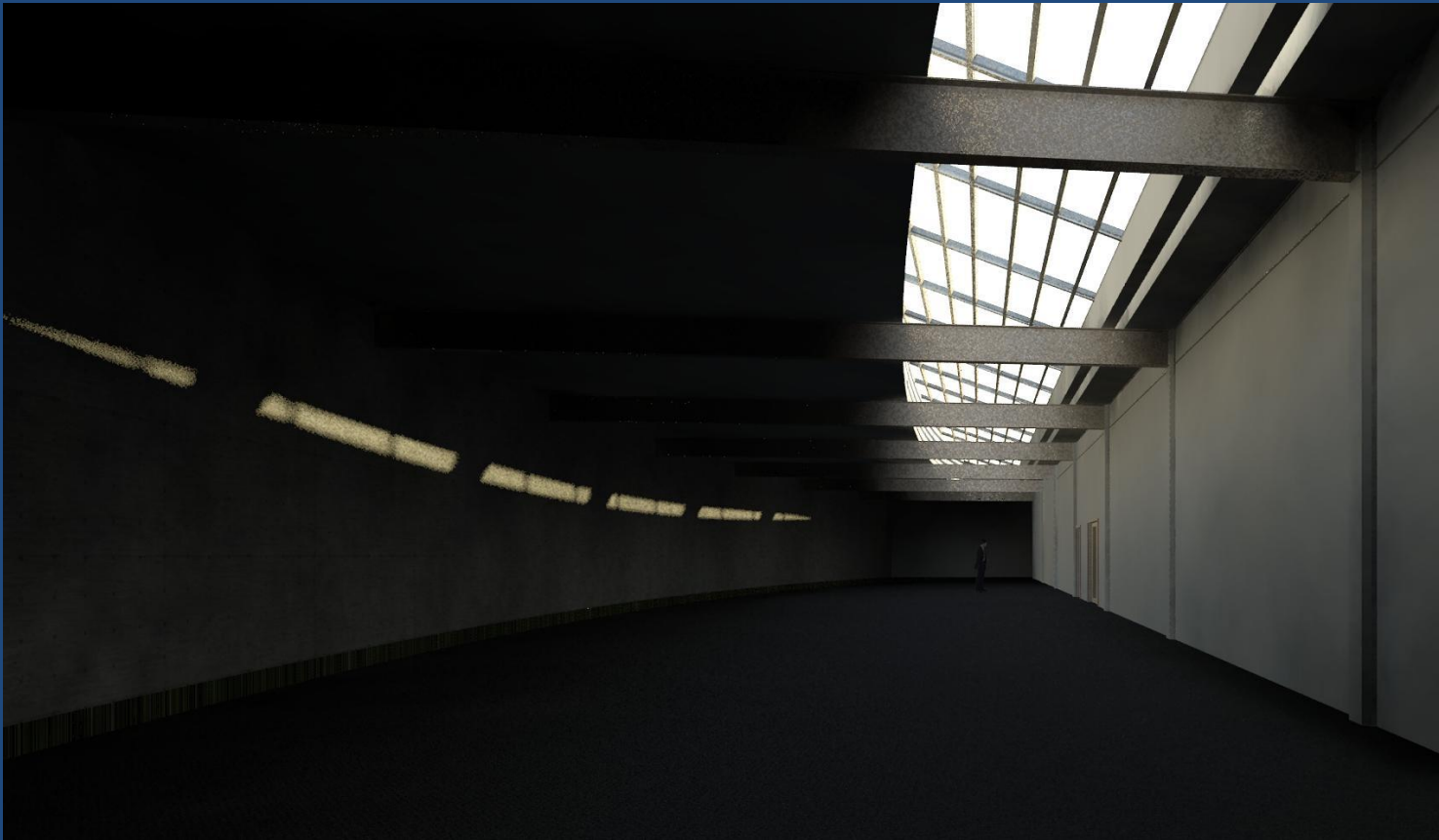
# 3.3.10

- Office Hall Development



# 3.3.10

- Lab Development



# 3.3.10

- Lab Development





# 3.8.10

- Office Hall Development



# 3.8.10

- Office Hall Development



# 3.9.10

- Section Development





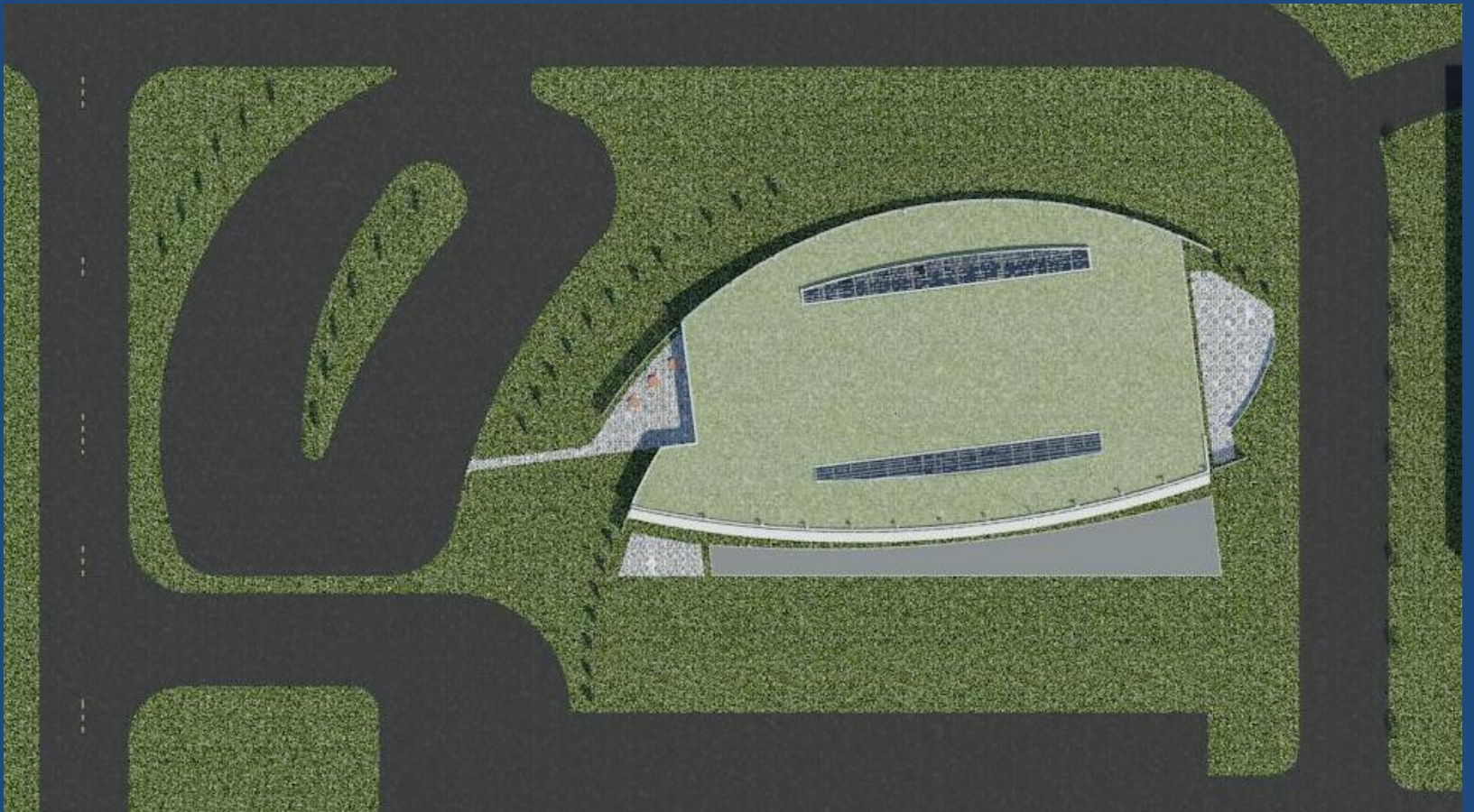
# 3.9.10

- Lab Development



# 3.9.10

- Site Development



# 3.15.10

- Conference room development





# 3.15.10

- Office Hall development



# 3.19.10

- Library Hall Development



# 3.19.10

- Library Hall Development





# 3.19.10

- Write Up Hall Development



# 3.19.10

- Central Hall Development



# 3.19.10

- Central Hall Development





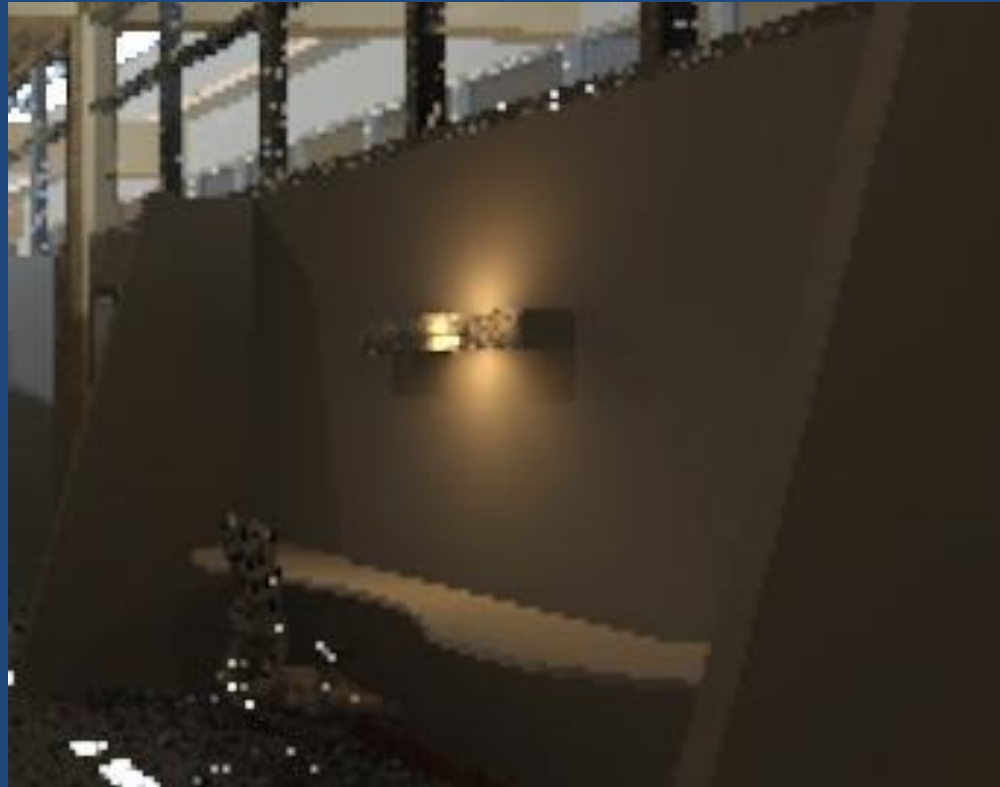
# 3.20.10

- Library Development



# 3.20.10

- Write Up Hall Development



# 3.22.10

- Lab development





# 3.24.10

- Office Hall Development



# 3.24.10

- Lab Development

