

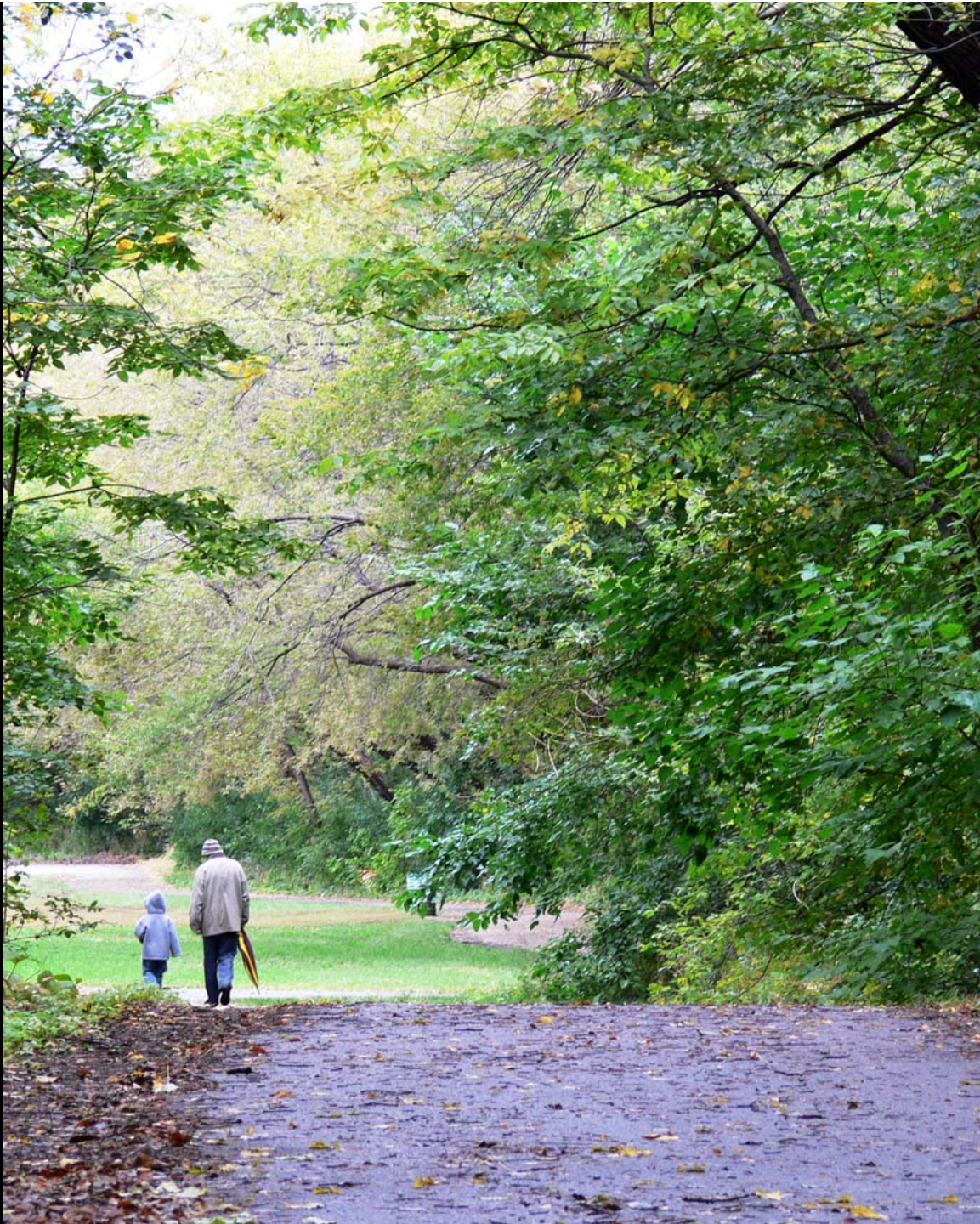


# Matilda's House

Design Thesis

by

Amanda R. Kohn



How does one receive healing and comfort,  
that is, receive consolation or relief from  
sadness, sorrow, pain, or worry and receive  
the strength to hope and continue living?

How can architecture respond to this?





Gift of Life Transplant  
House

Rochester, Minnesota

# Connections

- Each other
- Higher Power
- Built Environment
  - Nature

# Ronald McDonald Houses

Austin, Texas  
Transplant  
Friendly and  
LEED Platinum



Utrecht, Netherlands

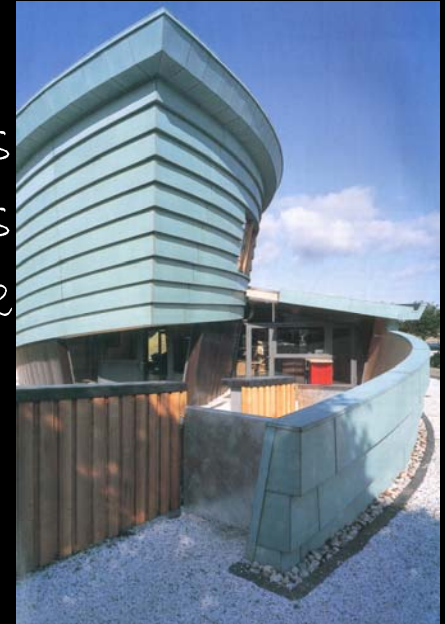




# Maggie's Centre



Maggie's  
Highlands  
Page/Park

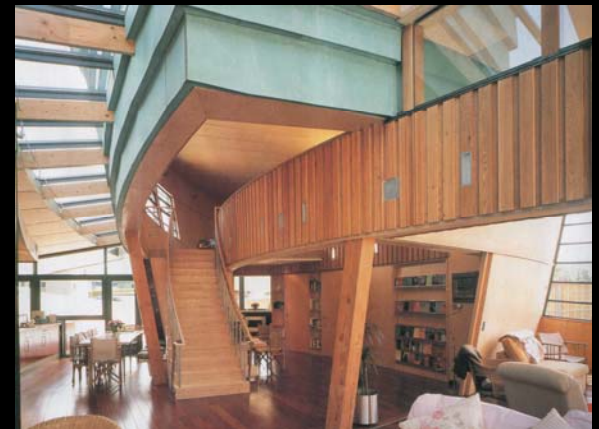


Maggie's London Rogers Stirk

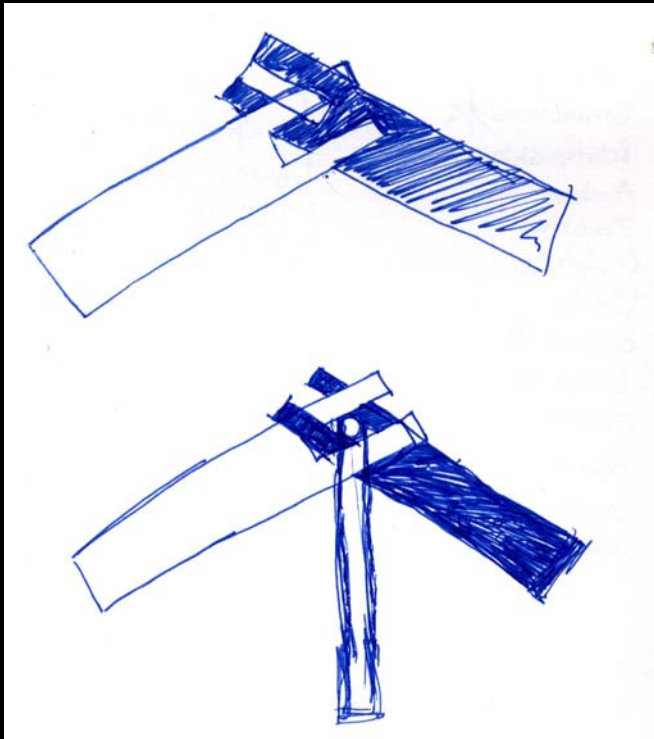
RIBA Stirling Award 2009



Maggie's  
Dundee  
Frank  
Gehry



Partí

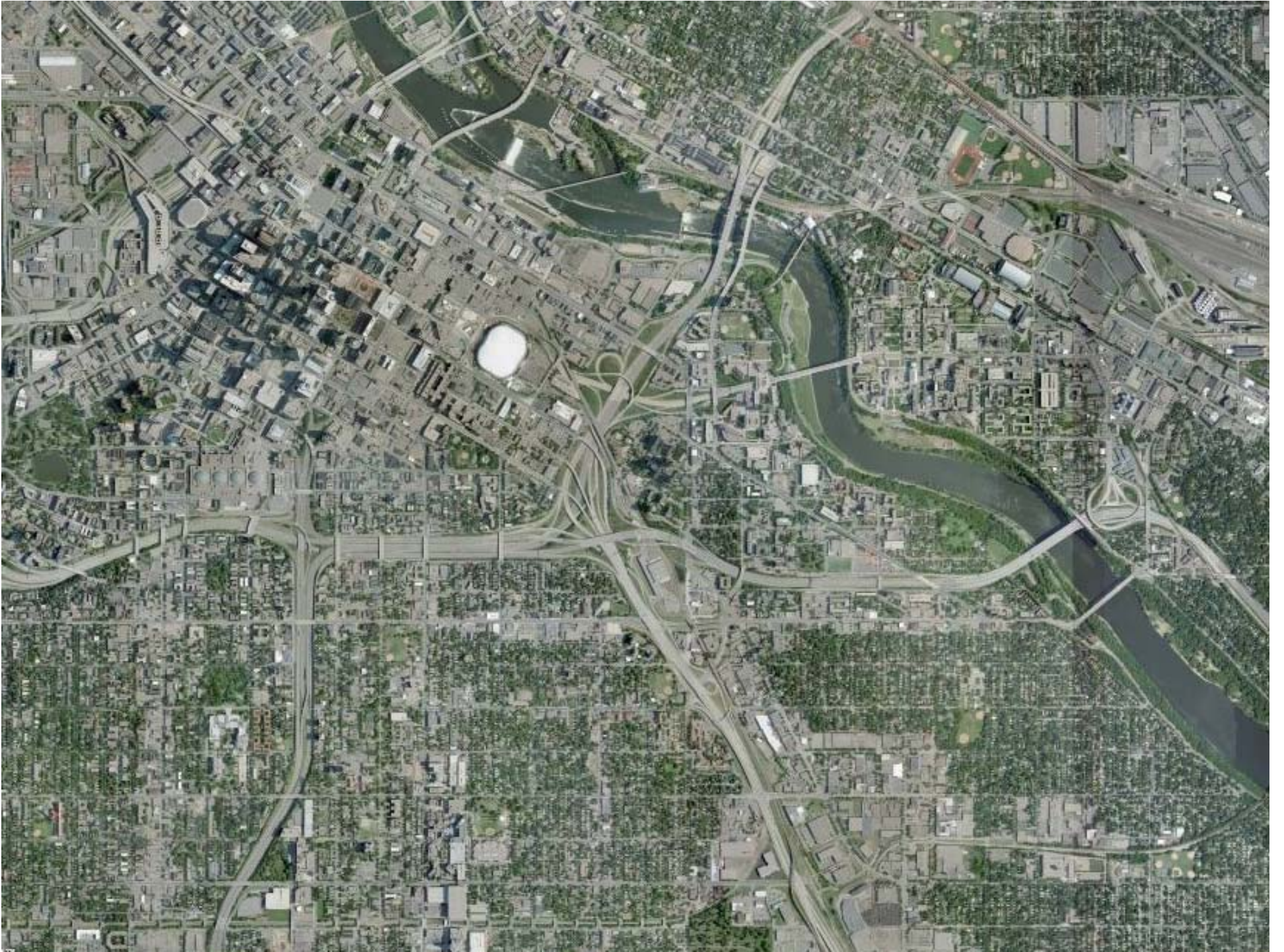


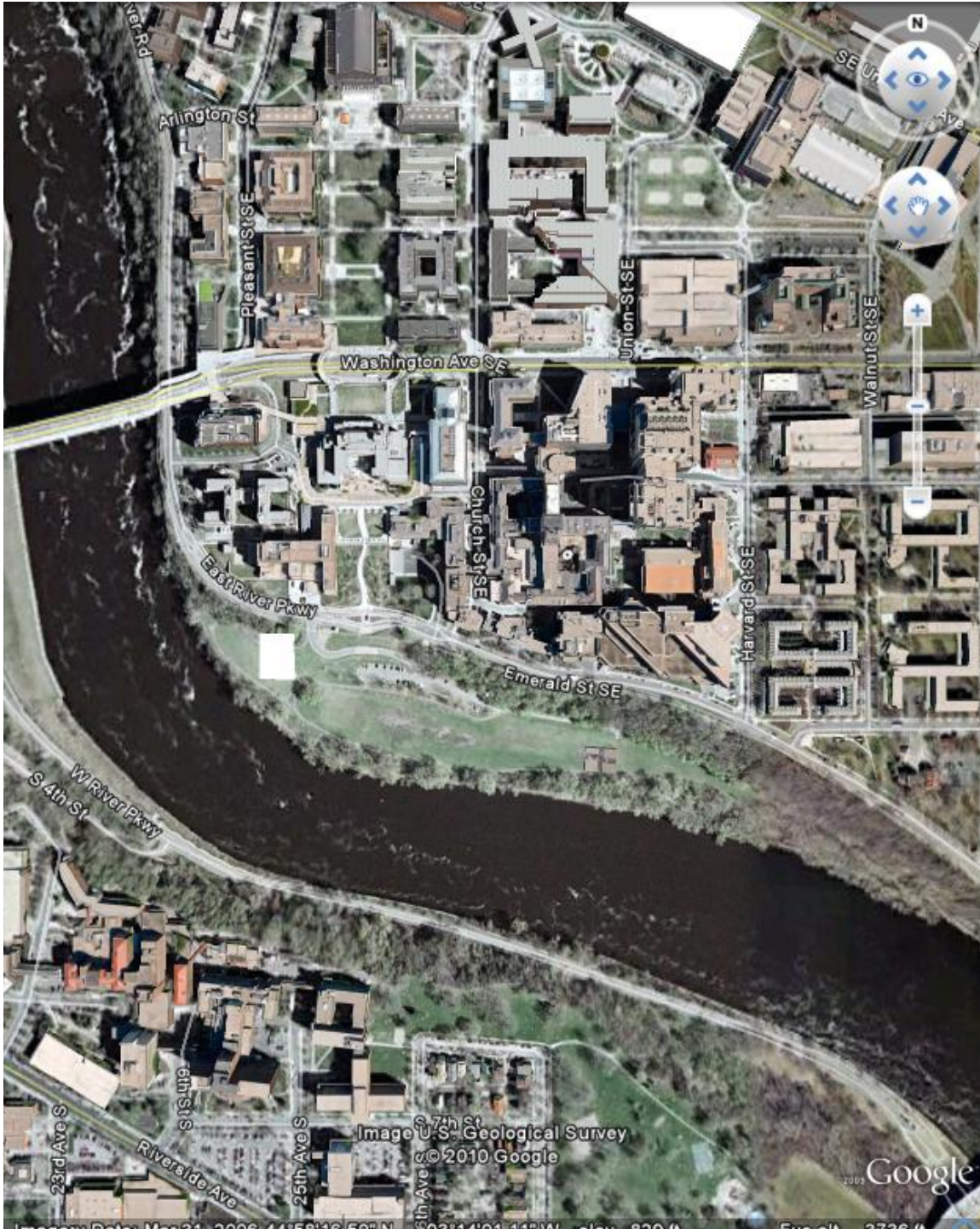
Connections

+

Balance

Even in the heat of  
hardship



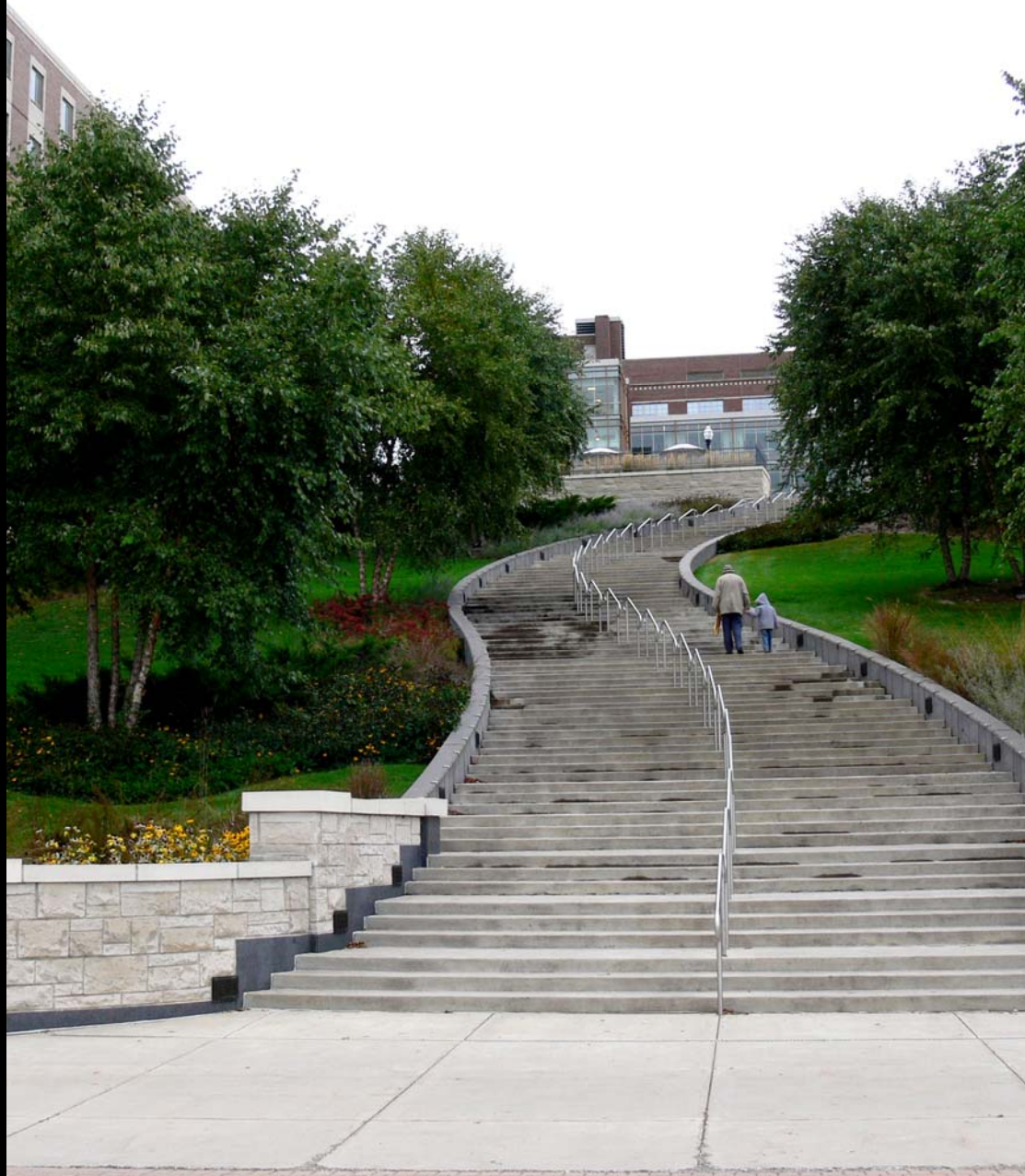


Site







































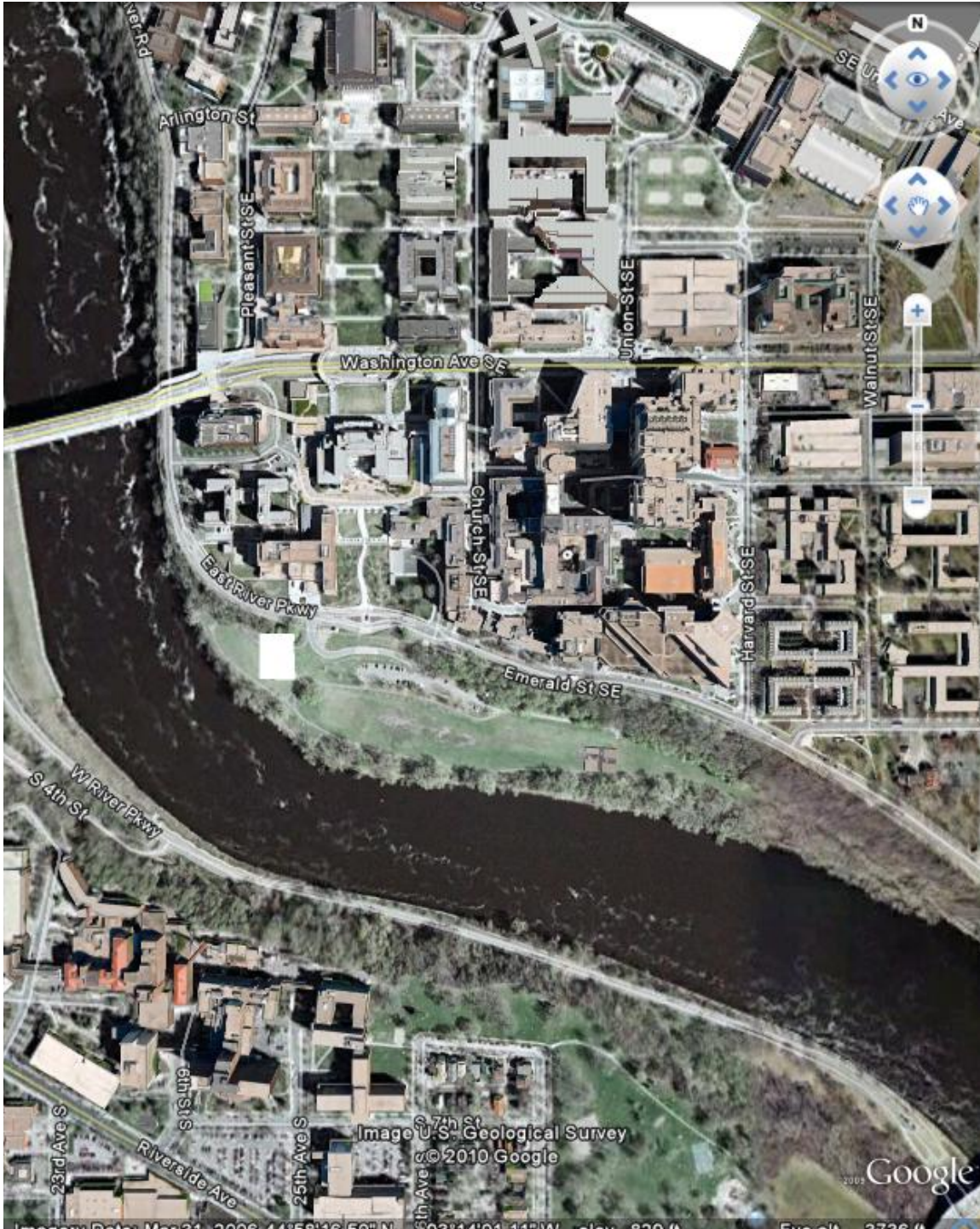










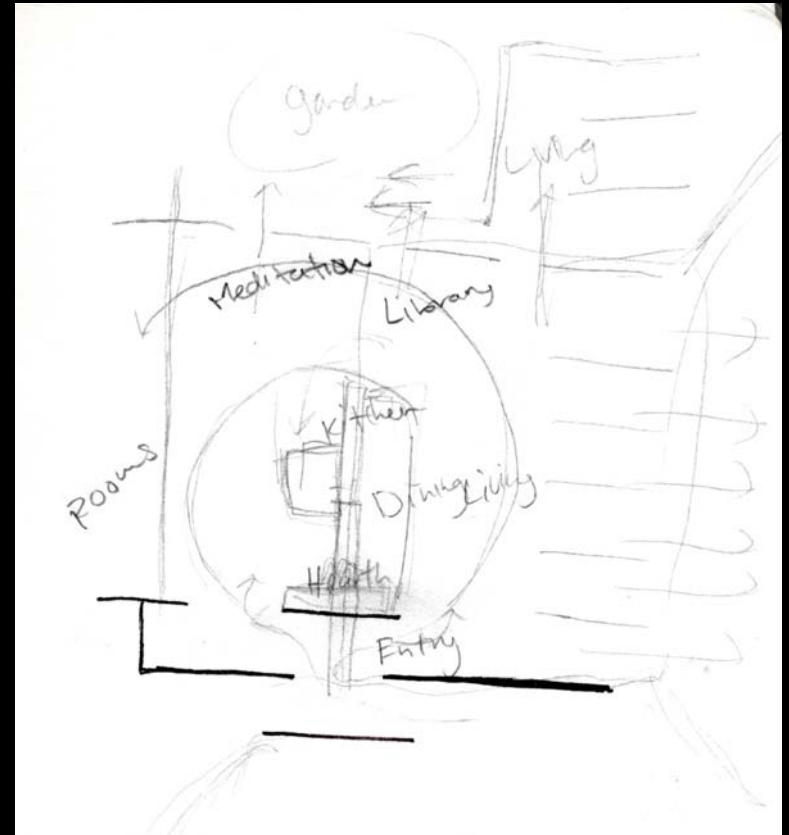
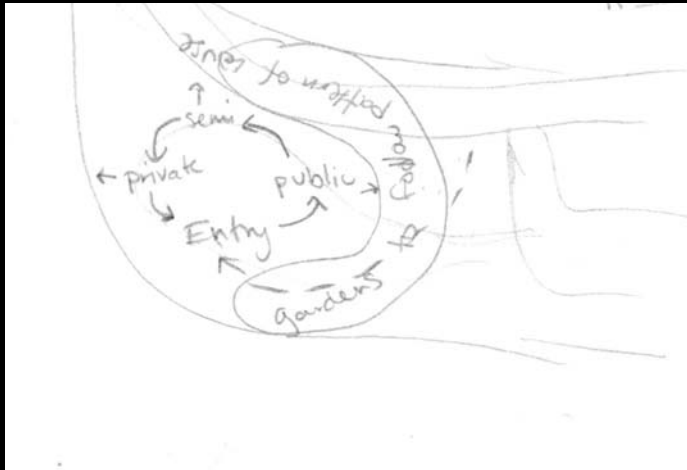
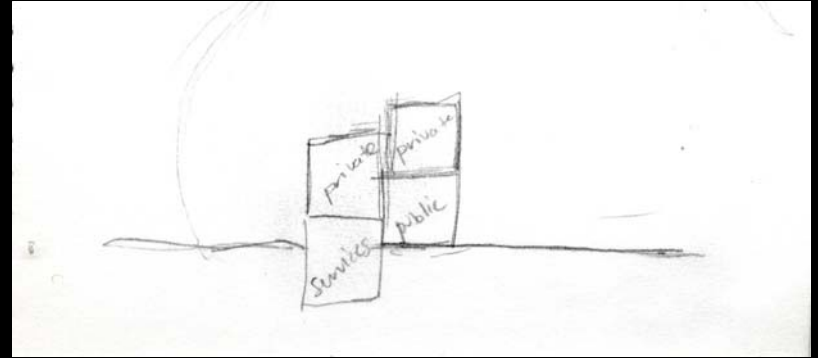
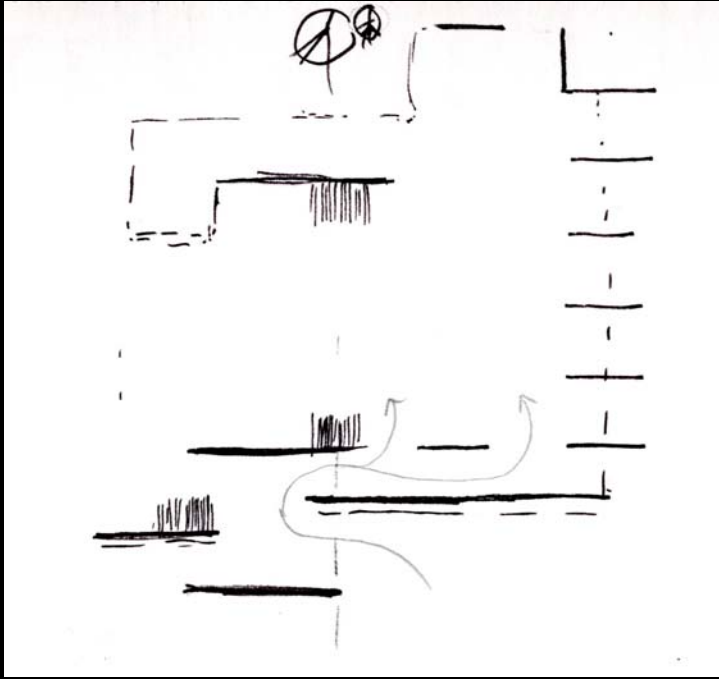


Site





Movement



# Feng Shuí

- Inseparably linked to our environment
- Encourages the connection between the built and the natural environments



# Feng Shuí

- Spiral Movement
- Watch Symmetry
- Watch use of  
high/vaulted ceilings
- Avoid Long Hallways





# Feng Shuí

- *Critical of Stair  
Placement*
- *Low, Clear, Prominent  
Entry*
- *Clear Movement and  
Direction Throughout*



# Feng Shuí

- Human Detail/Scale
- Use of Natural  
Lighting & Ventilation
- Avoid Irregular shapes  
and sharp corners

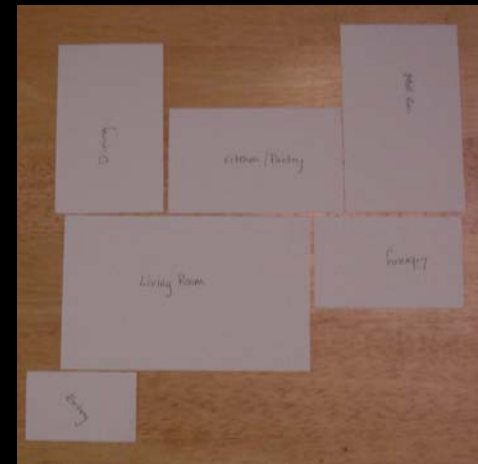
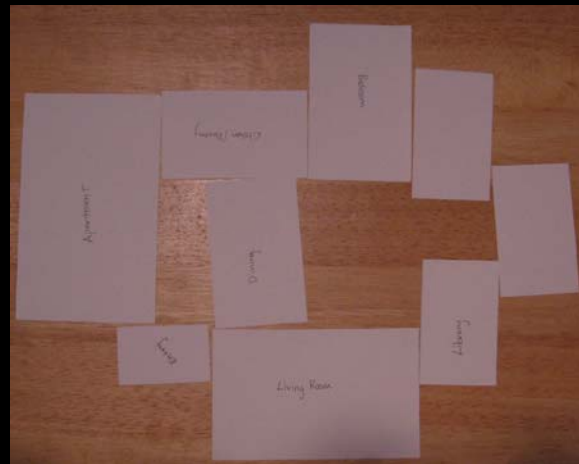
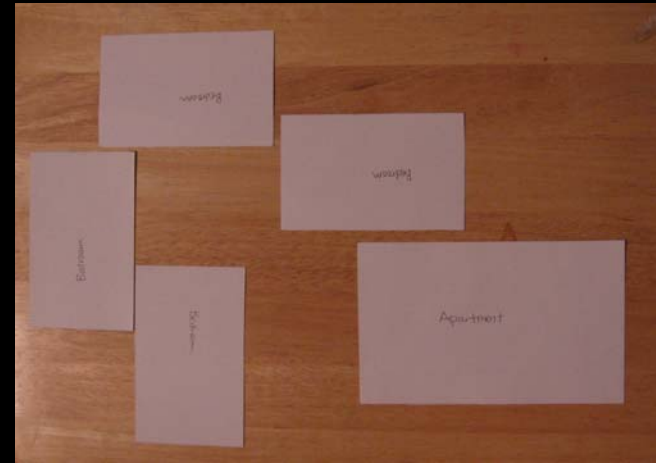
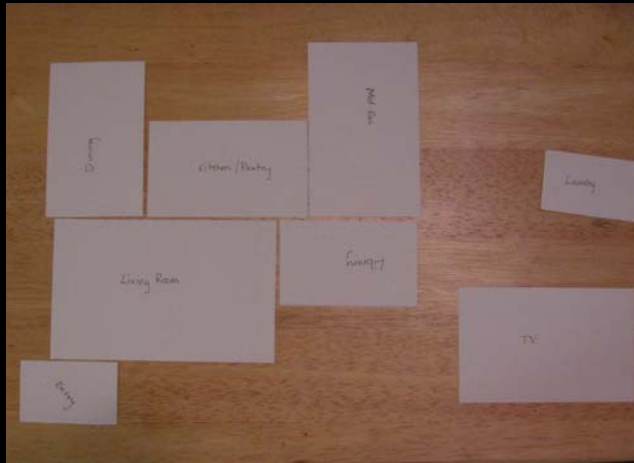


# Feng Shuí

- Strong, Clear Base or Foundation
- Lighter, smaller top
- Consider furniture placement and movement around

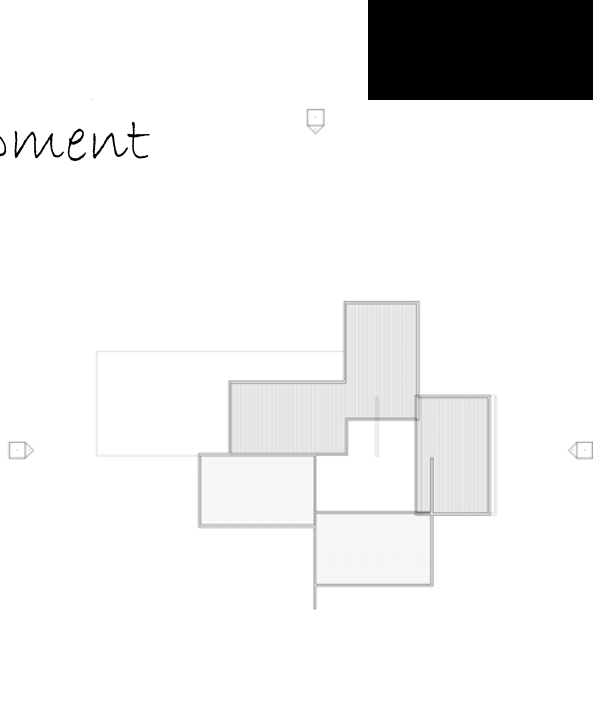
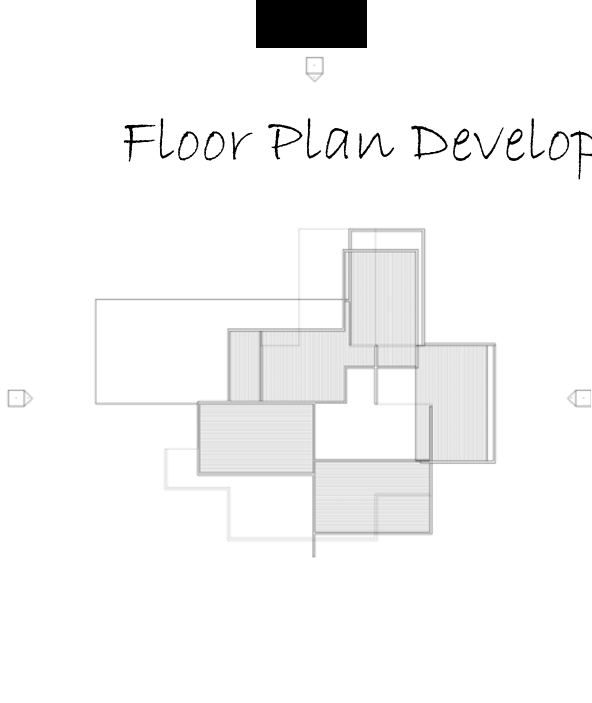
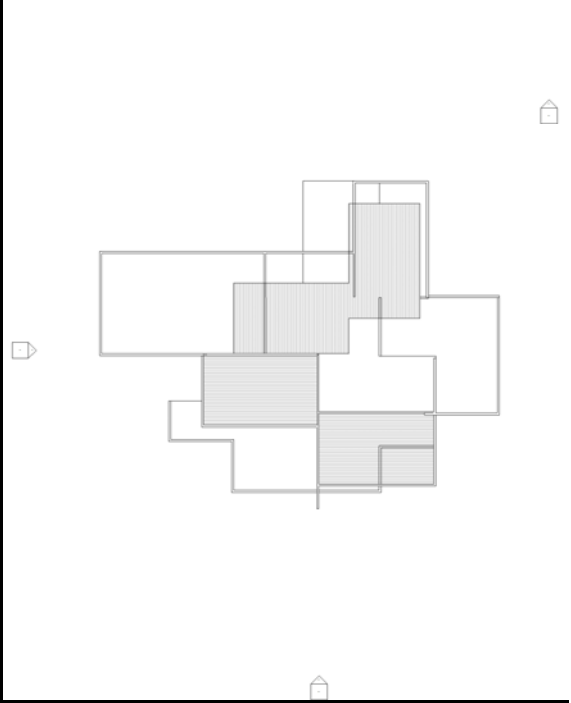
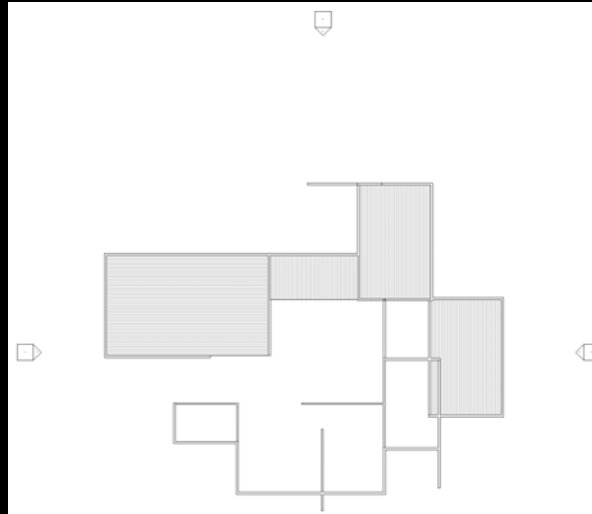
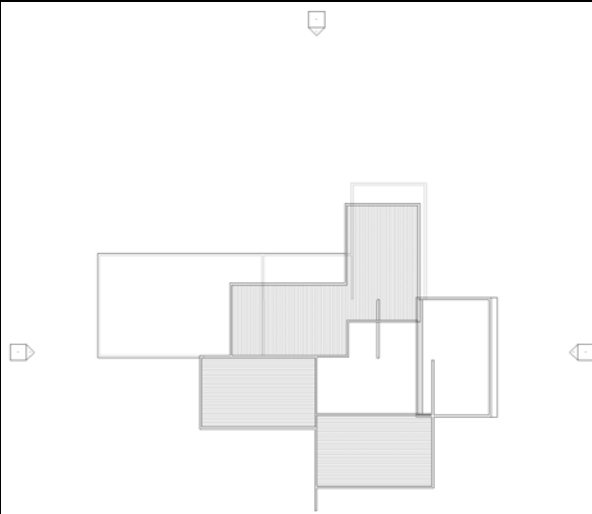


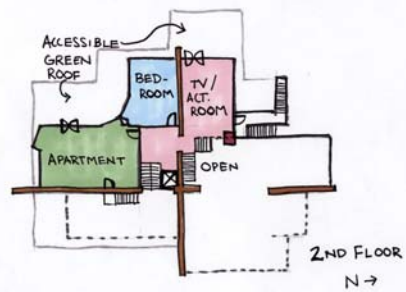
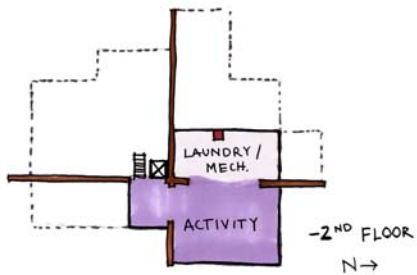
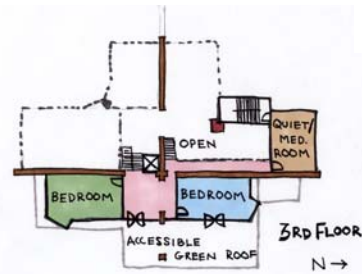
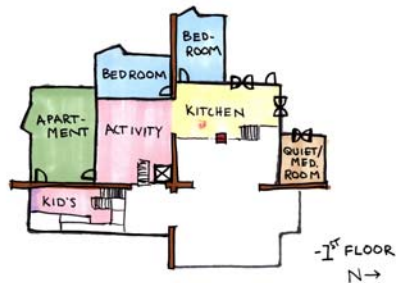
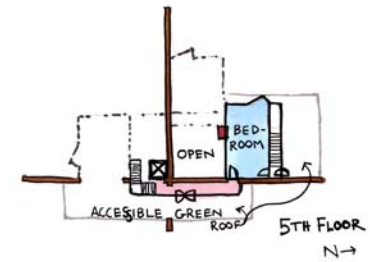
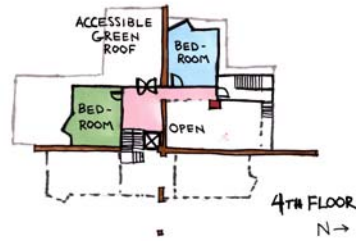
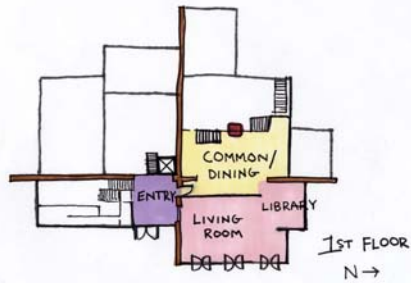
Layout and Development



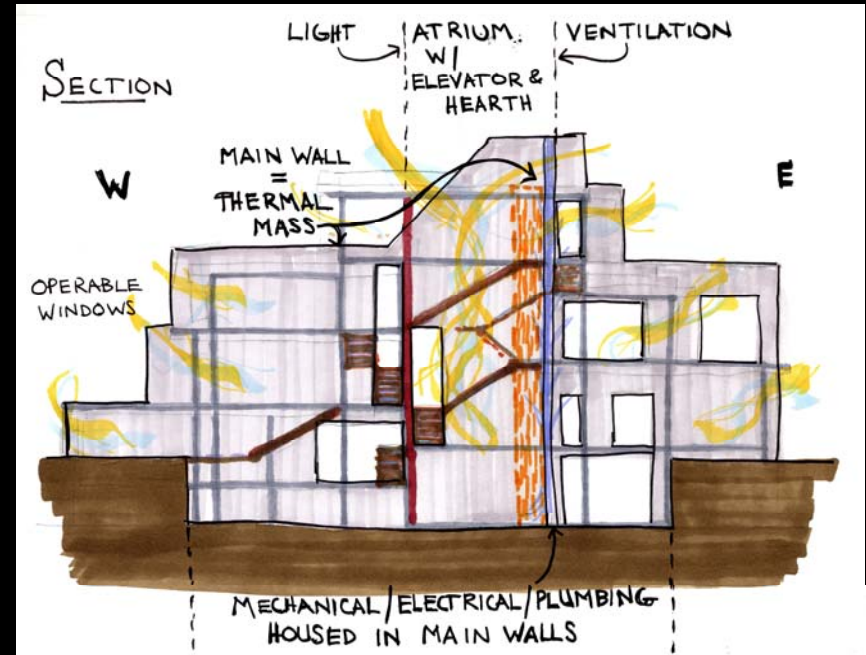
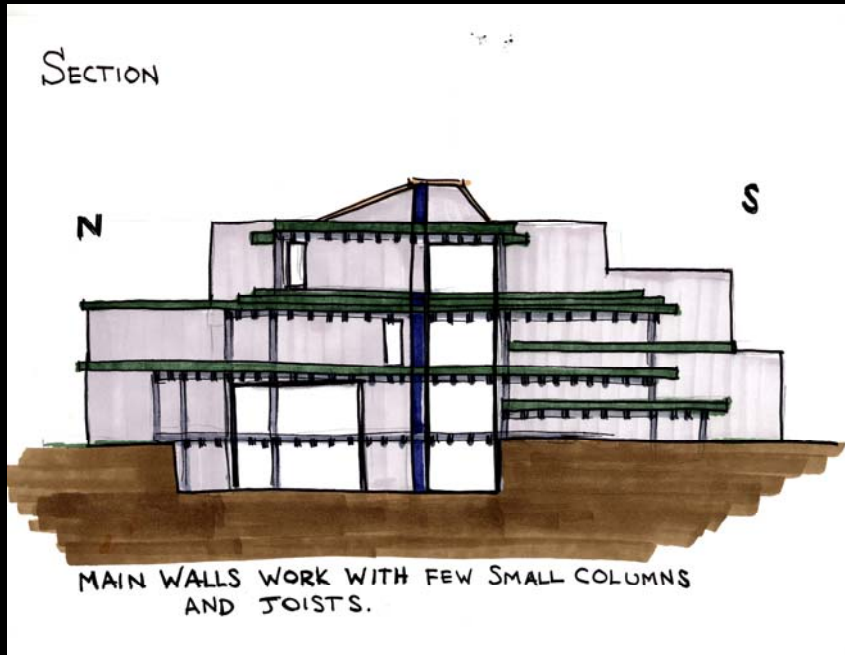
Space Layout Investigation

# Floor Plan Development





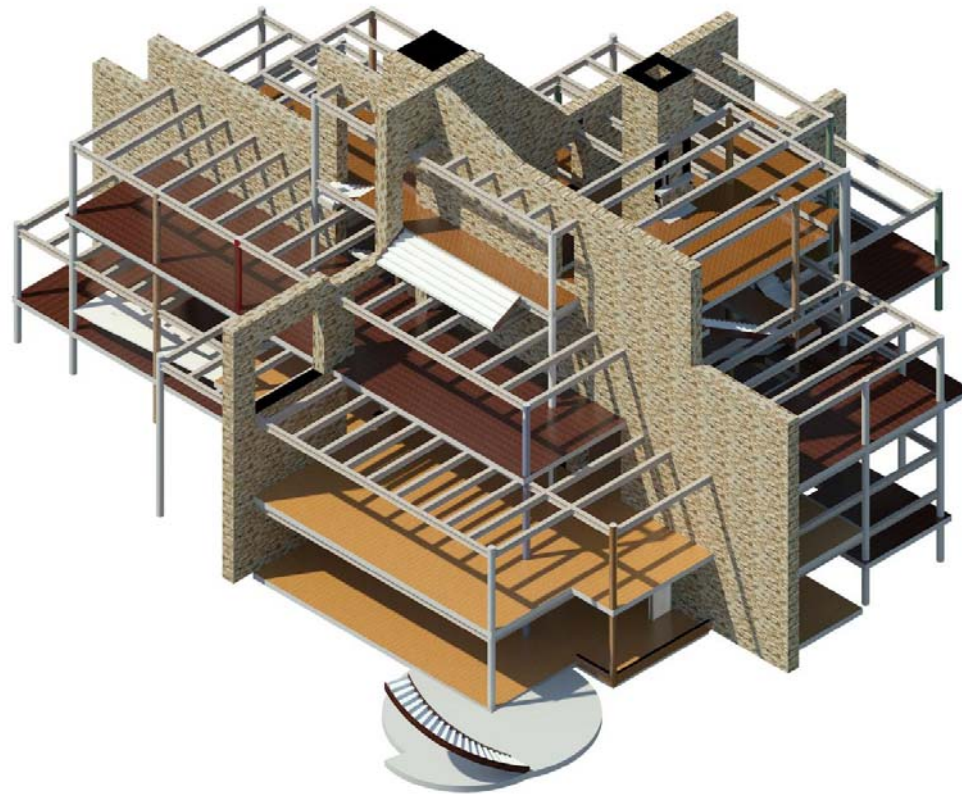
Midterm  
Floor  
Plans  
Illustrate  
Core  
Walls

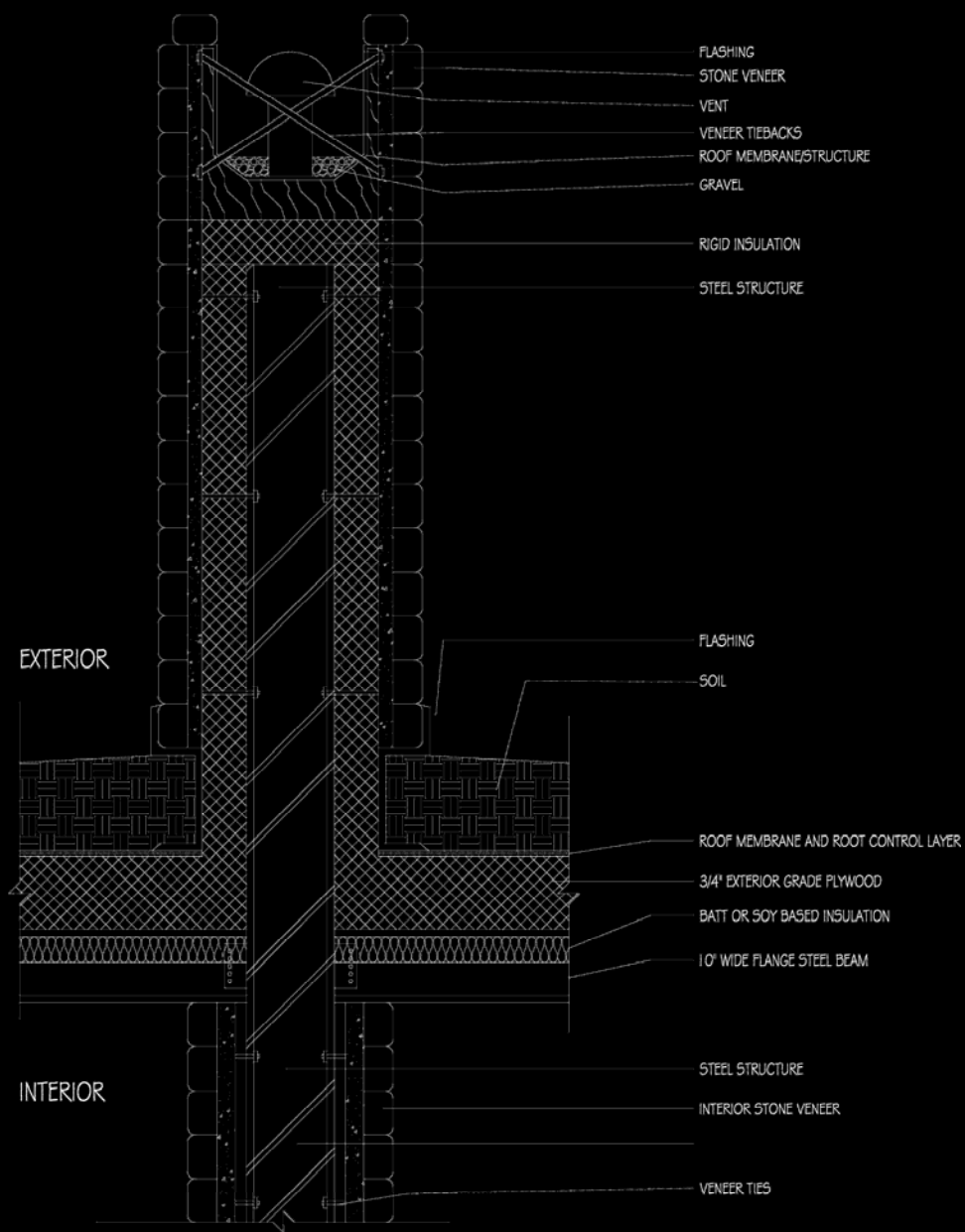


Midterm Core Wall Sections



Structural  
Exploration





FLASHING  
 STONE VENEER  
 VENT  
 VENEER TIEBACKS  
 ROOF MEMBRANE/STRUCTURE  
 GRAVEL

RIGID INSULATION  
 STEEL STRUCTURE

FLASHING  
 SOIL

ROOF MEMBRANE AND ROOT CONTROL LAYER  
 3/4" EXTERIOR GRADE PLYWOOD  
 BATT OR SOY BASED INSULATION  
 10' WIDE FLANGE STEEL BEAM

STEEL STRUCTURE  
 INTERIOR STONE VENEER  
 VENEER TIES

EXTERIOR

INTERIOR

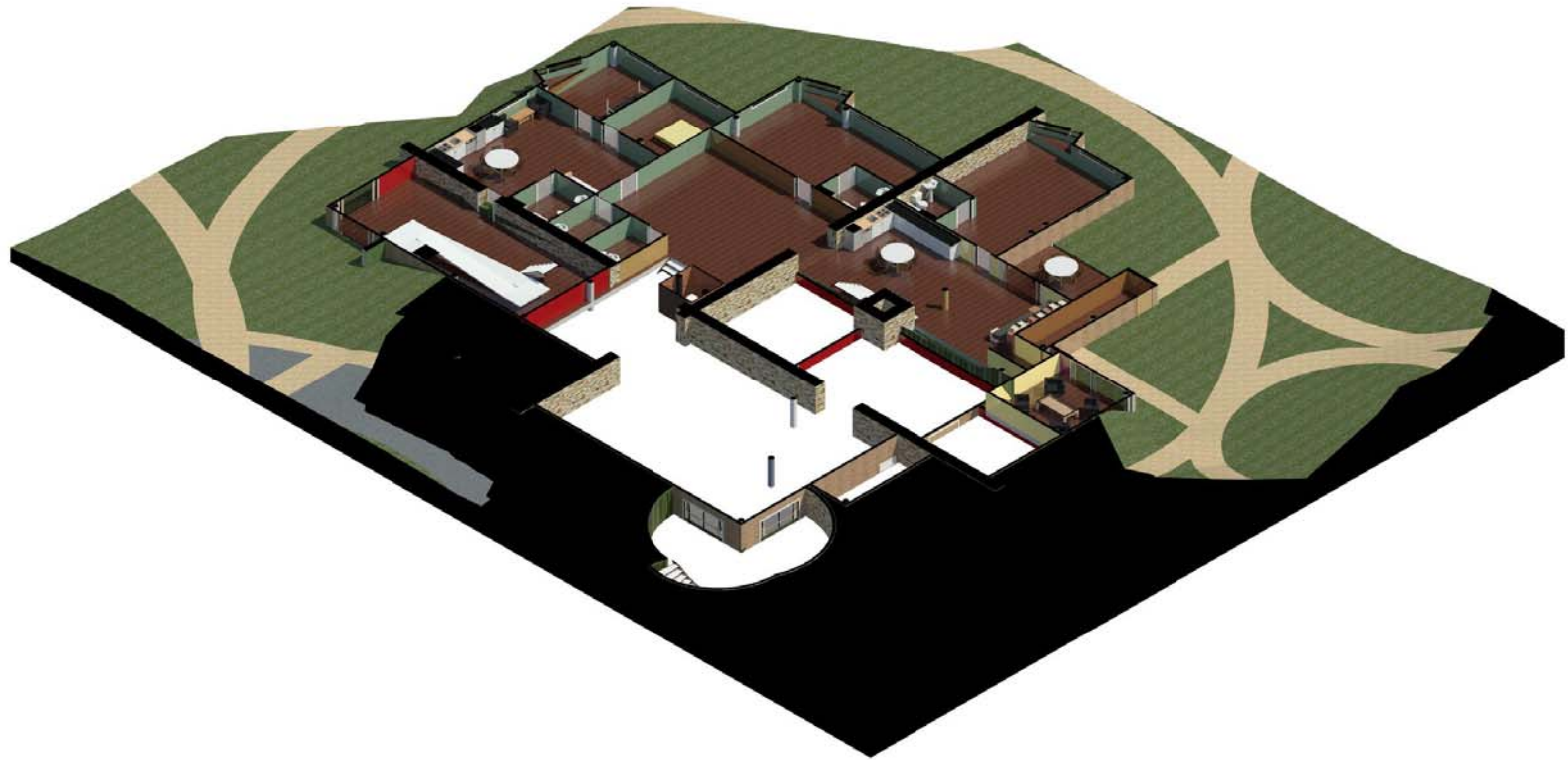
Core  
 Wall  
 Detail



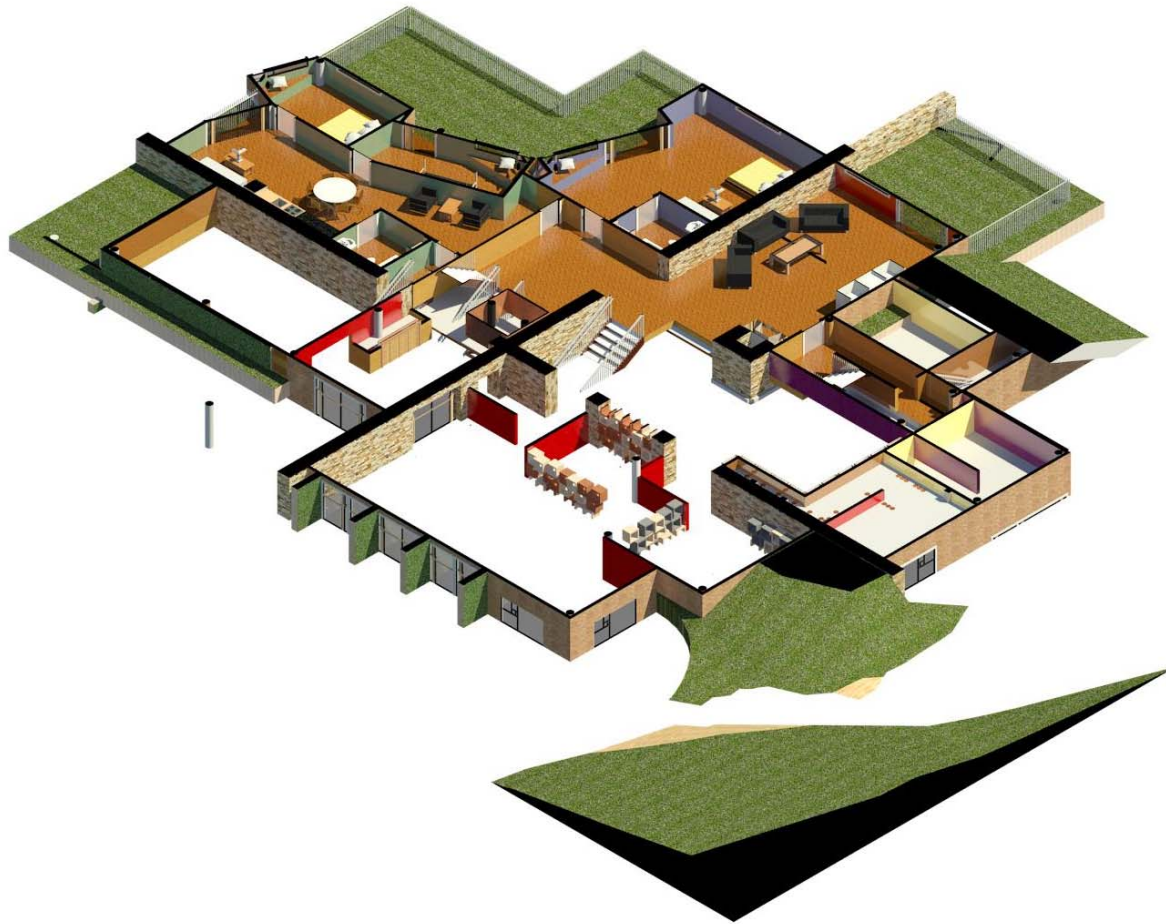
*Sections Revealing Core Walls*



FLOOR -1



# Floor 2



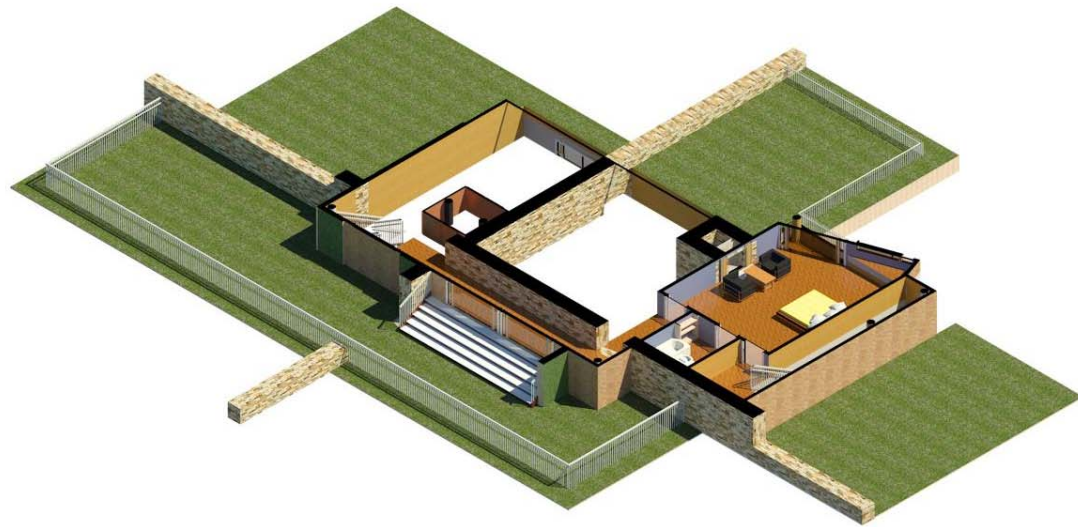
Floor 3



# Floor 4



# Floor 5





# Living Room



# Floor 1





# Floor 1



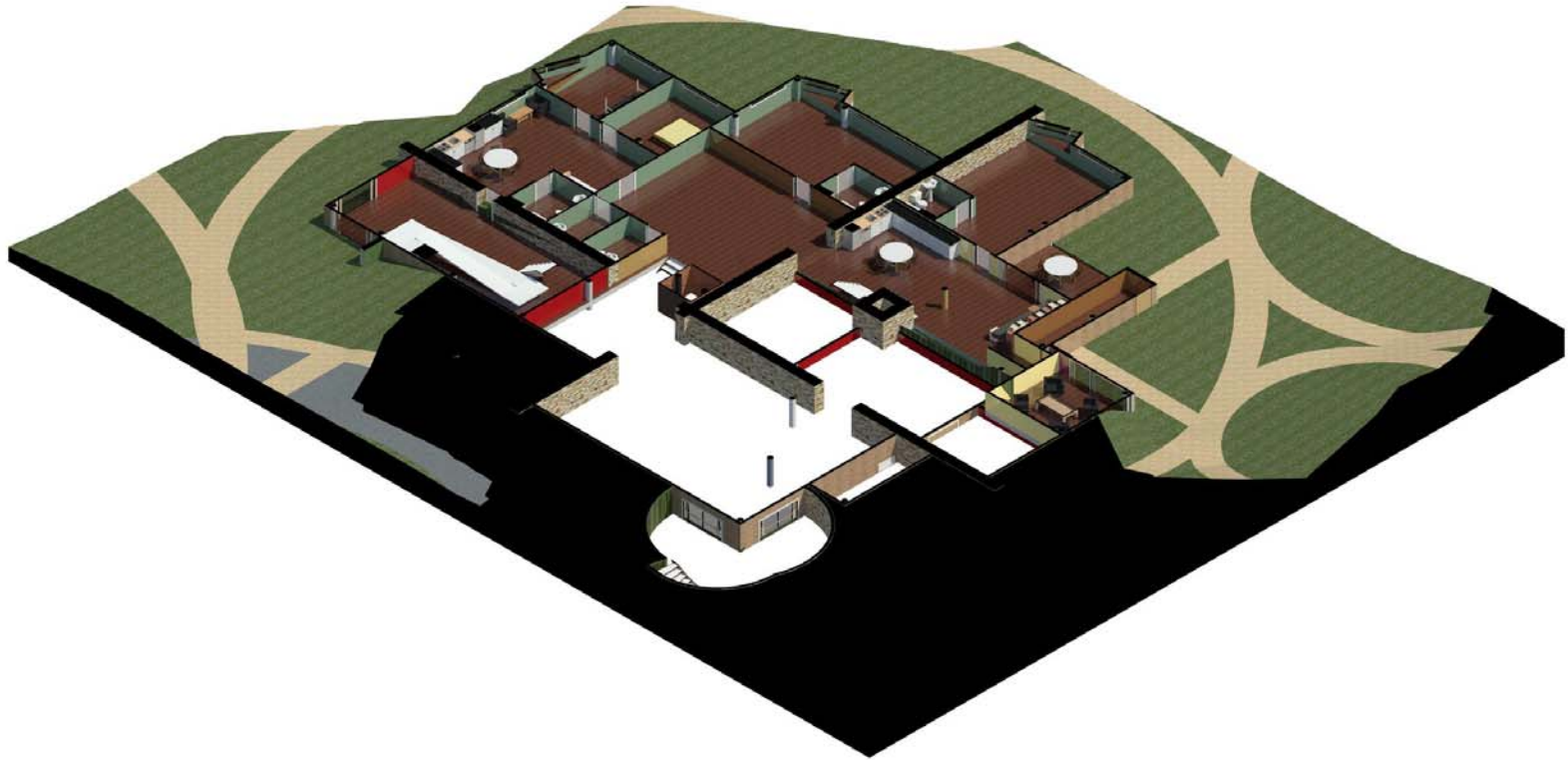
# Kitchen & Dining Room



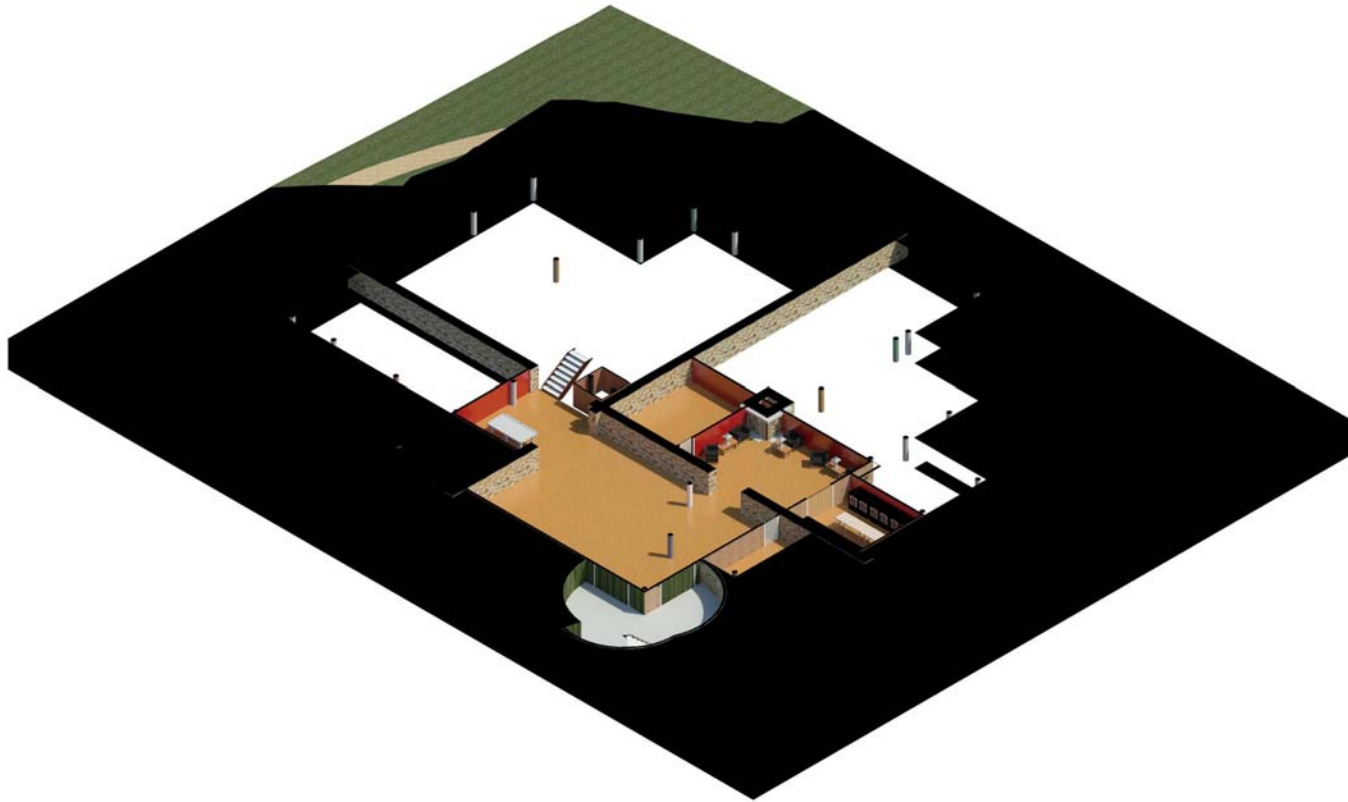
# Atrium Cut



Floor -1

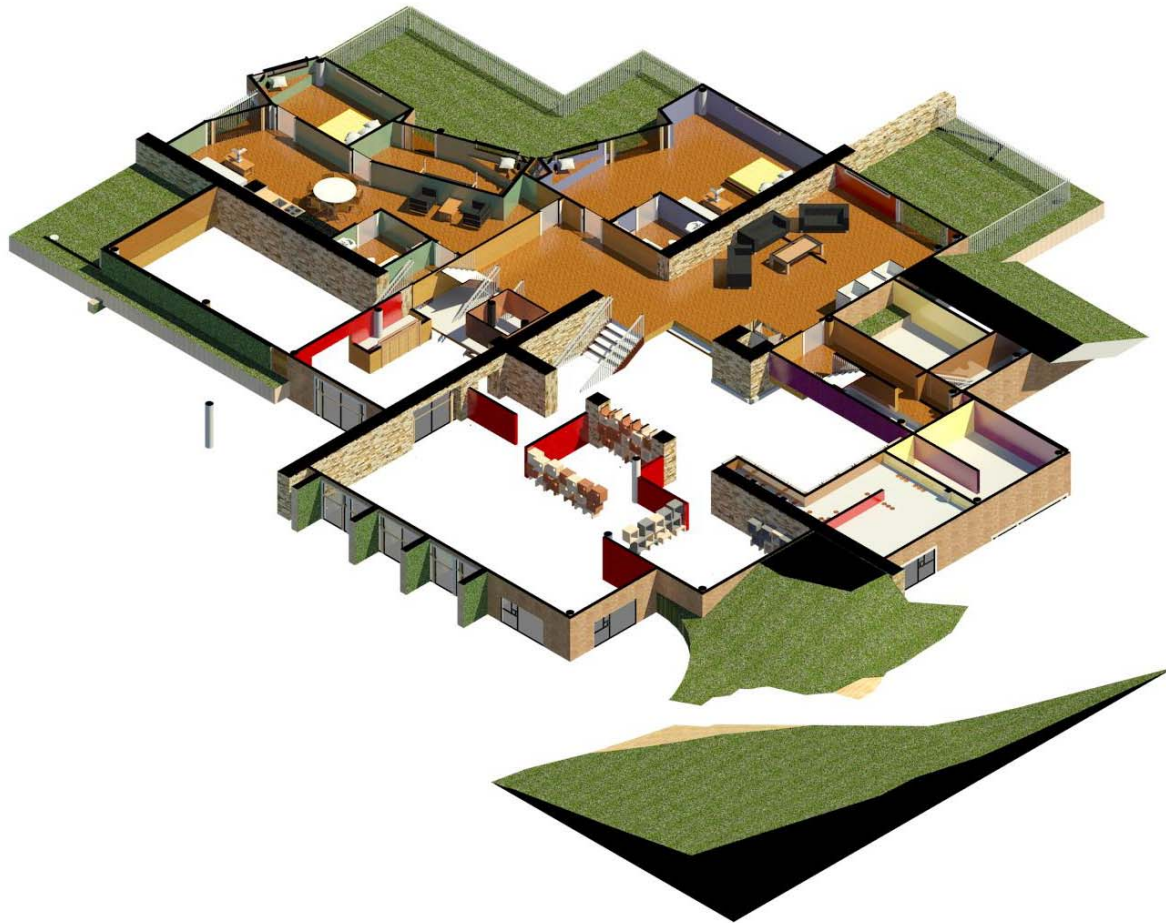


Floor -2





# Floor 2

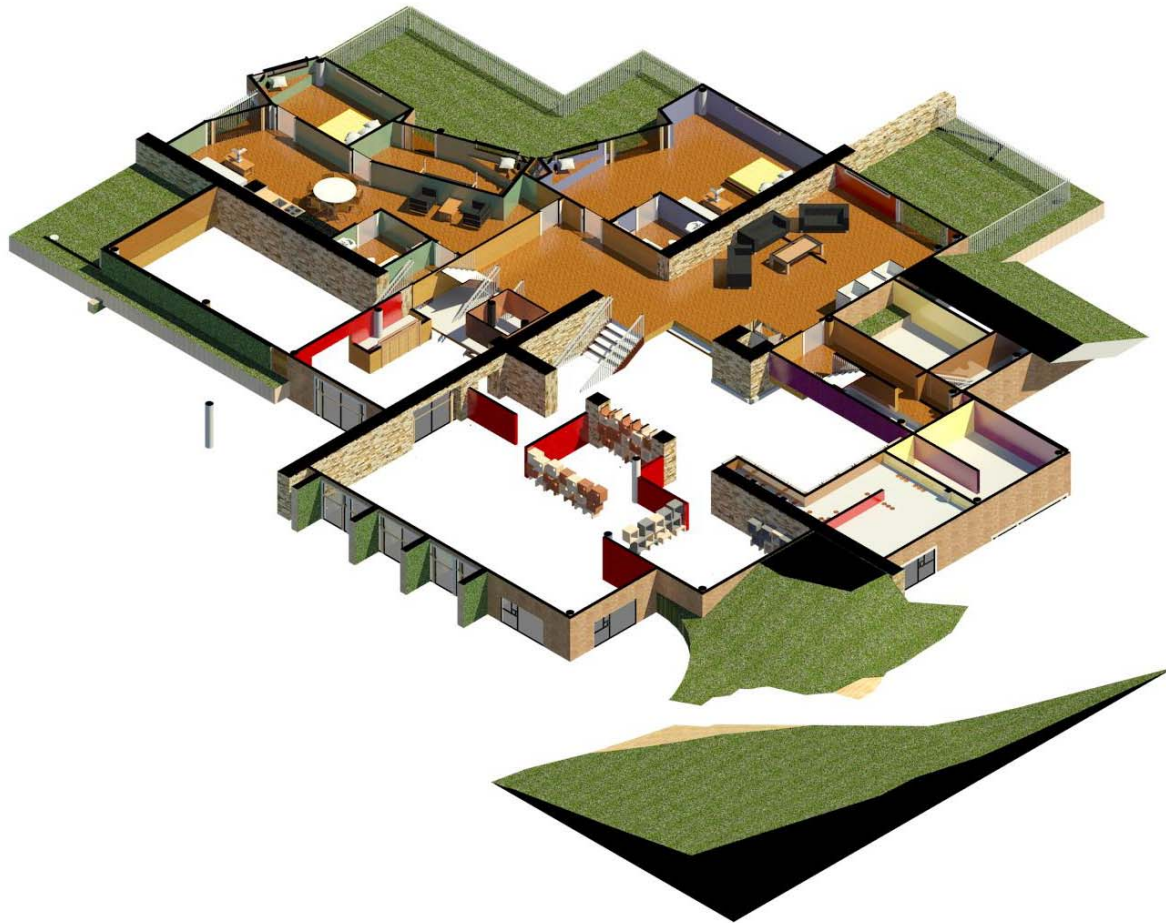




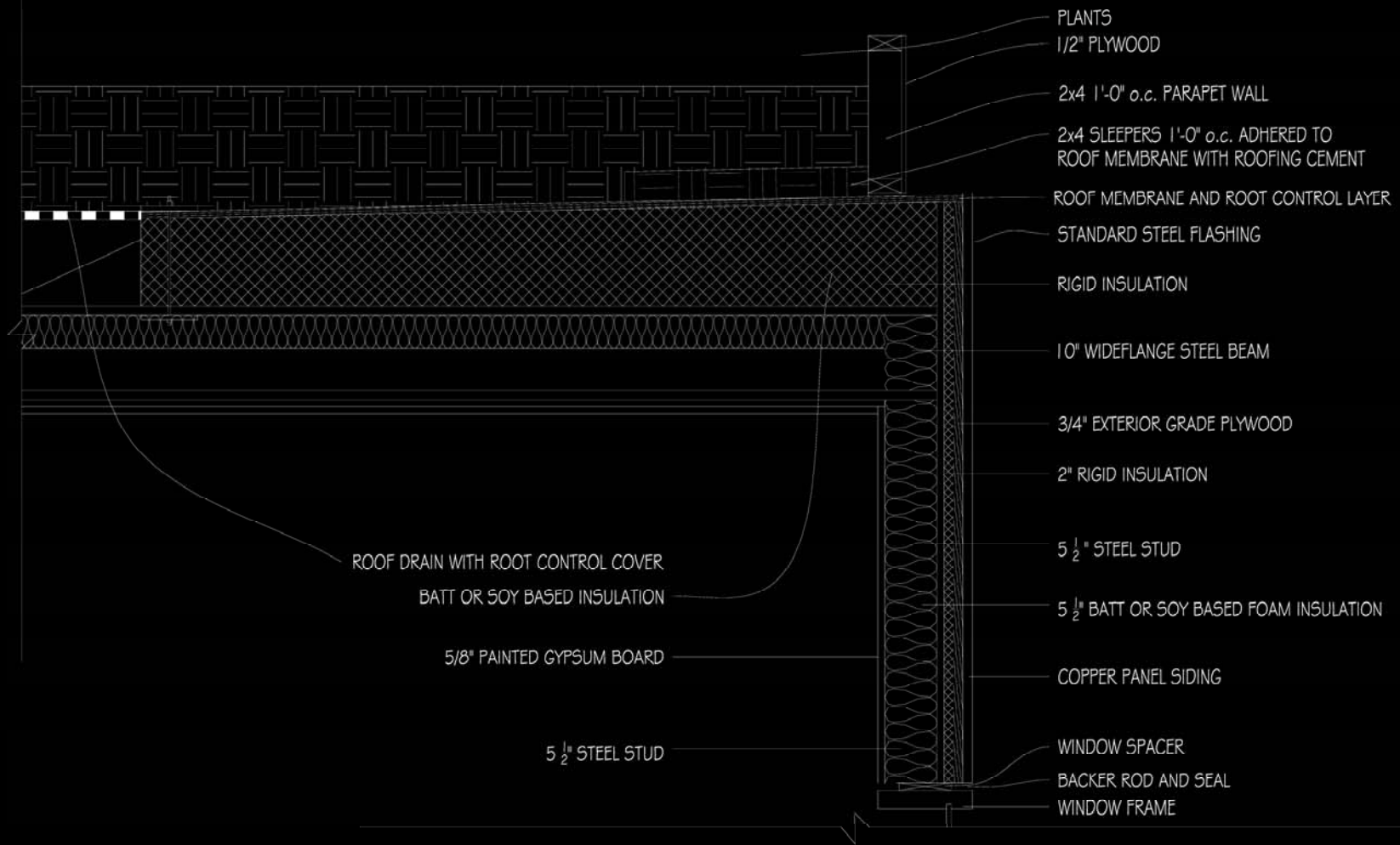
*Sections Revealing Core Walls*



# Floor 2



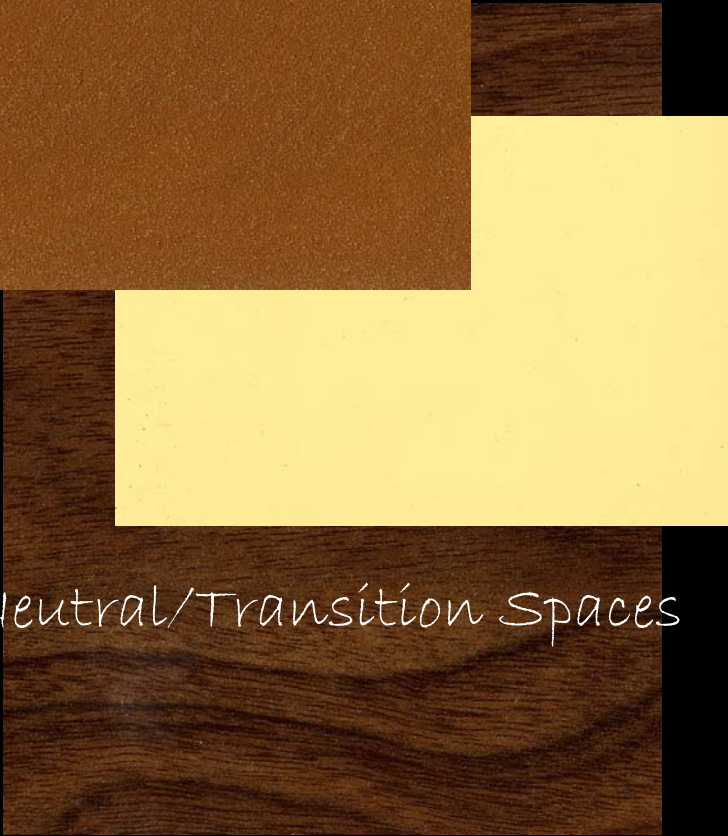
# Malcolm Wells Green Roof Detail



Materials and Details

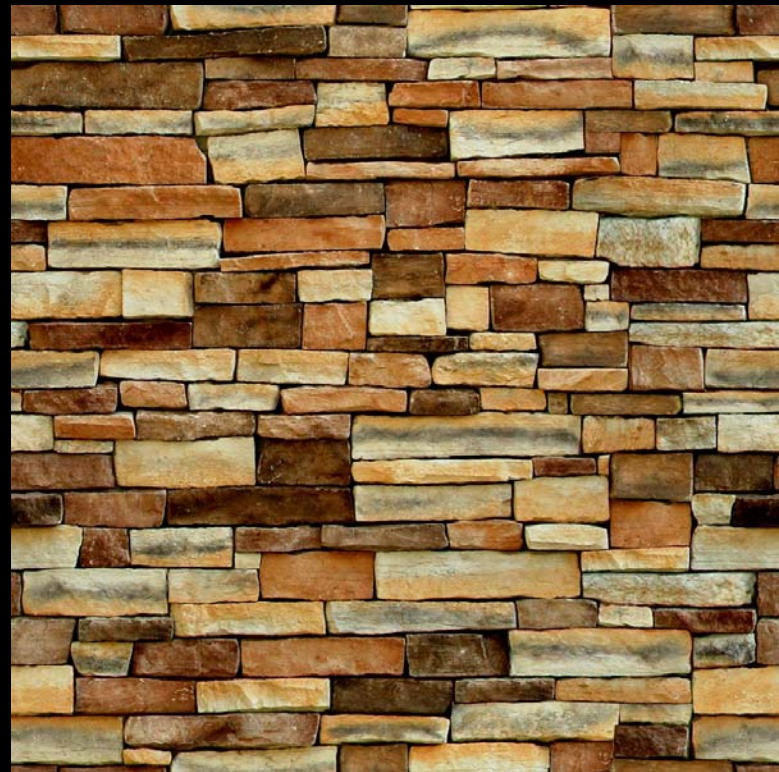


Exterior Copper Colored Panel



Neutral/Transition Spaces

Core Wall Stone

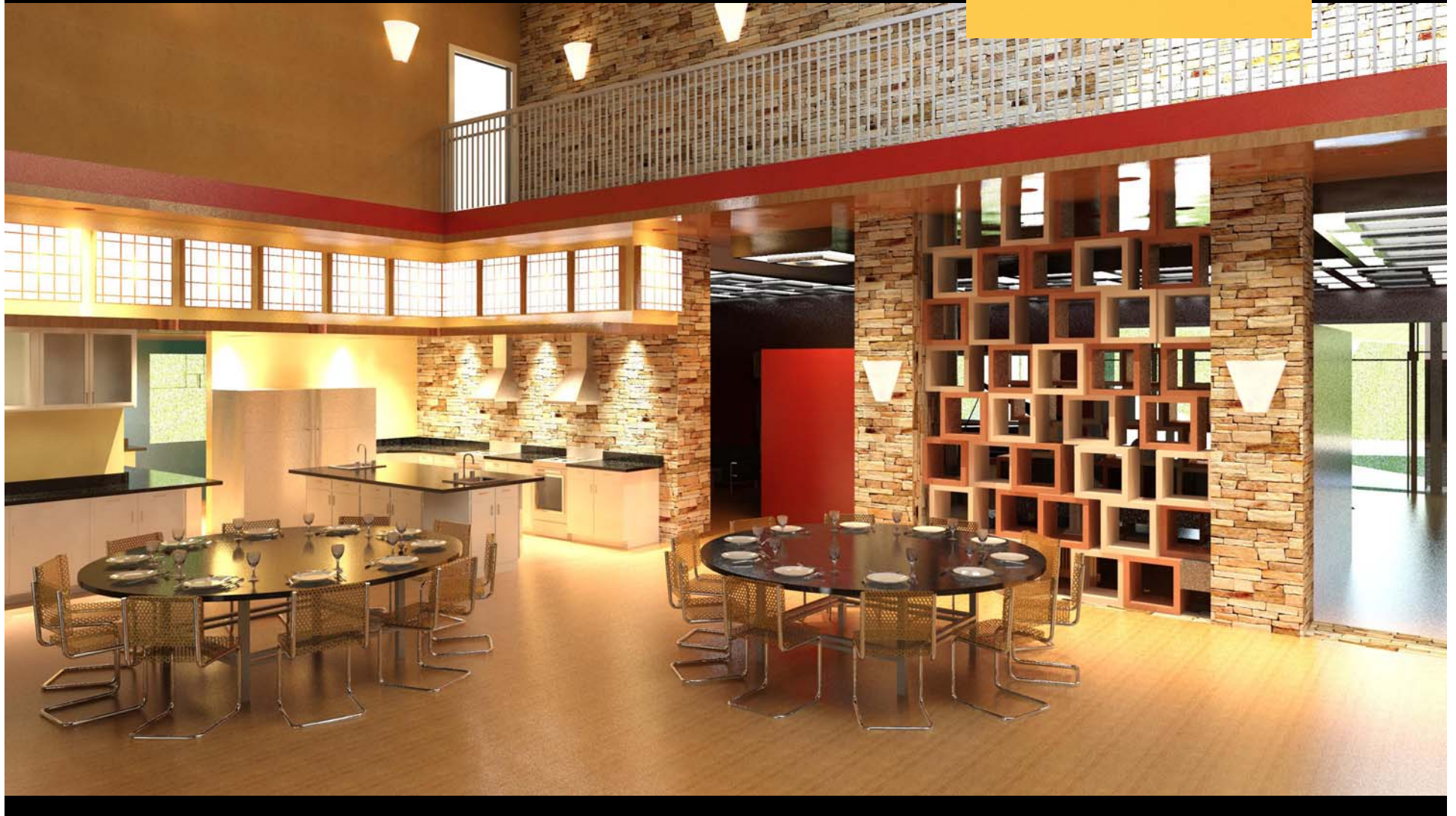




Living, Gathering,  
& Activity Spaces

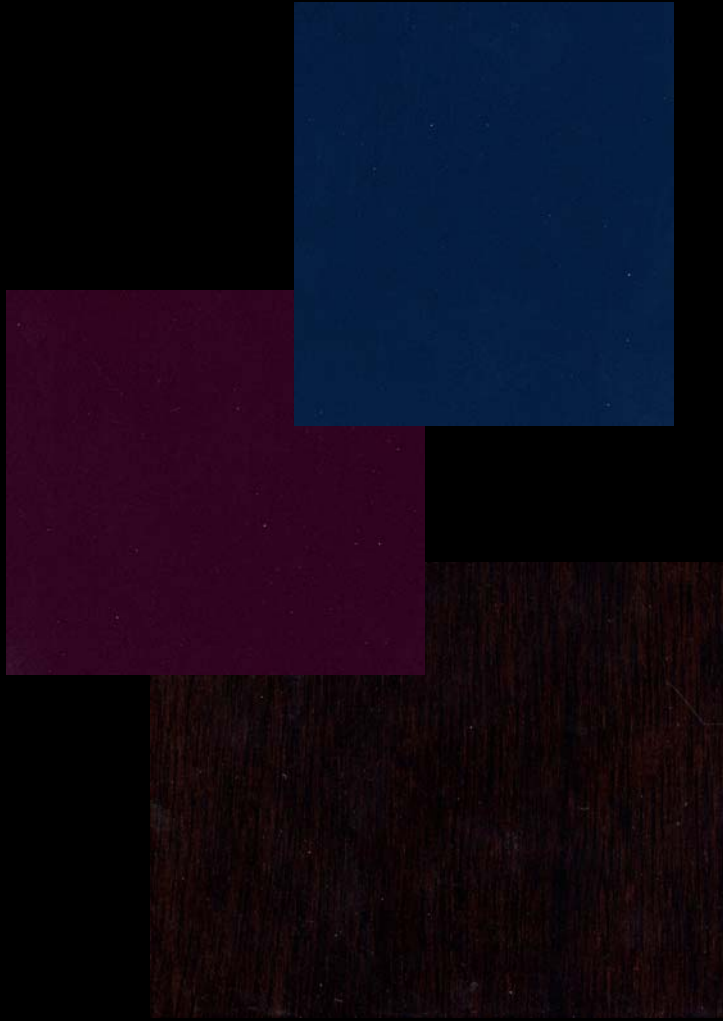


# Kitchen & Dining Spaces

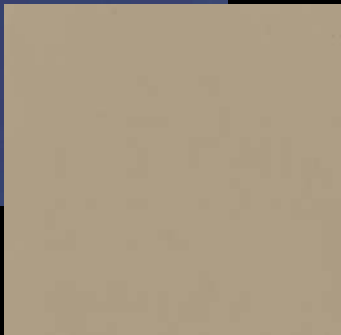




# Quiet & Meditation Spaces

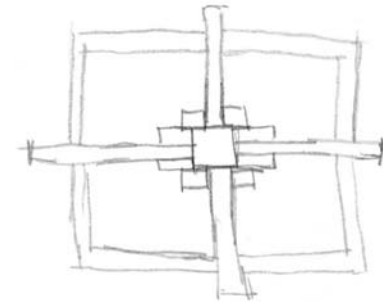
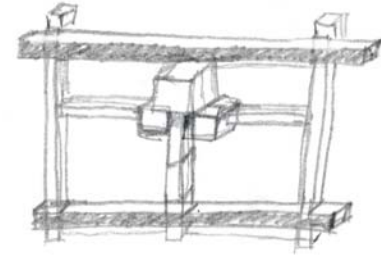
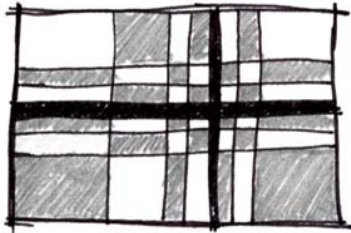
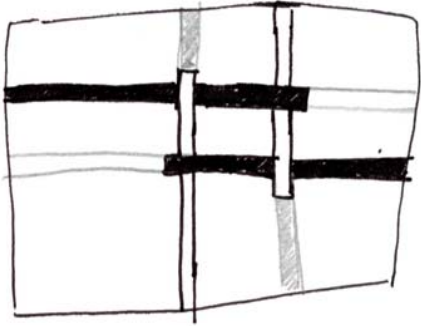


# Bedroom Spaces



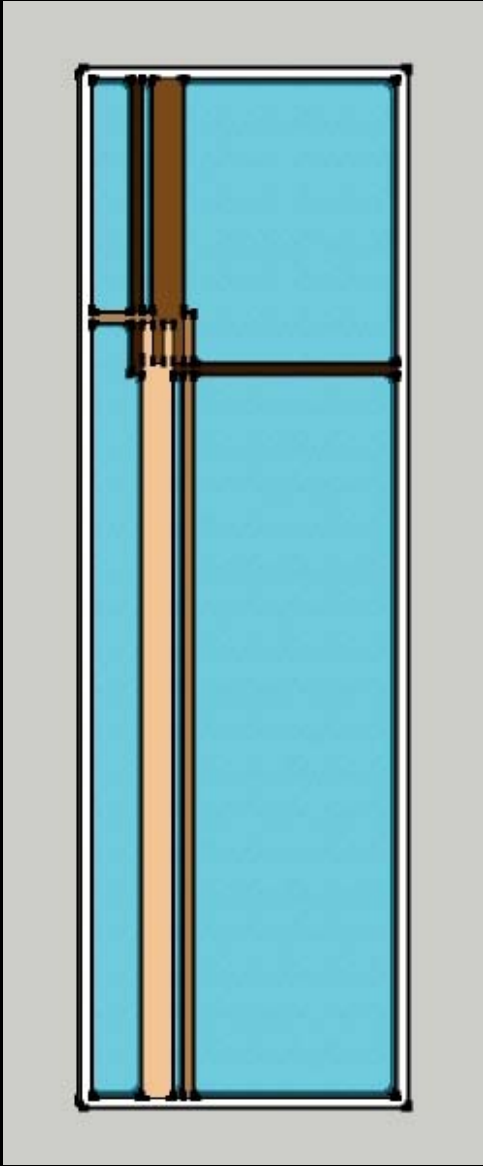
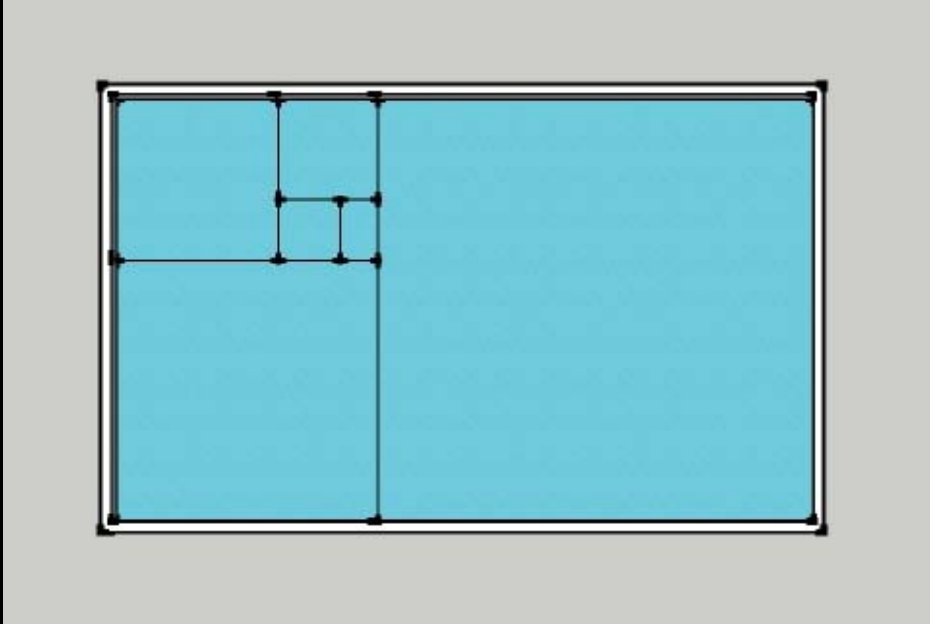


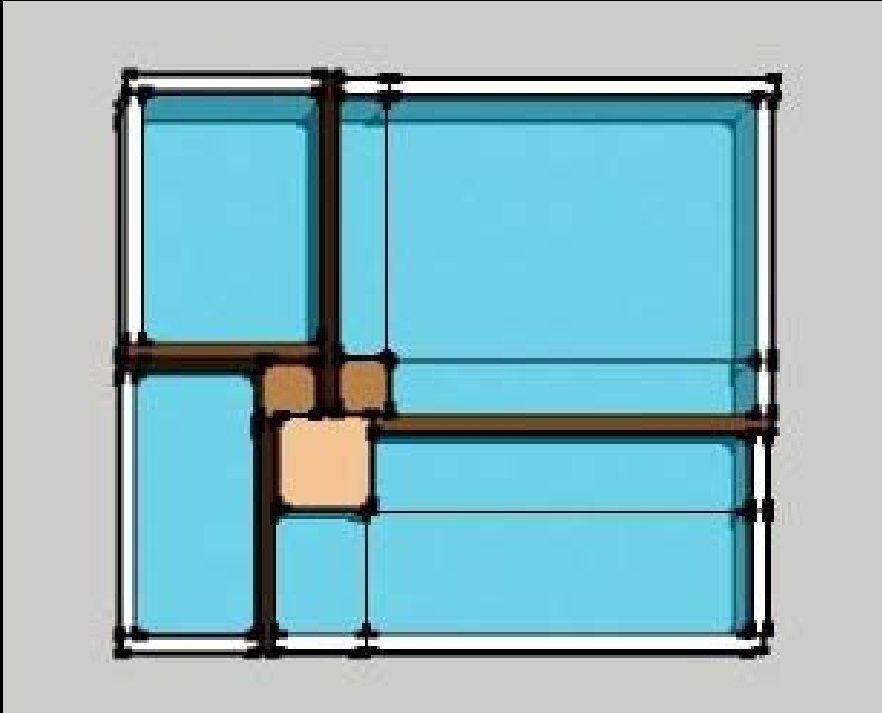
Window Placement  
And Design  
Explorations





EAST









# Matilda's House



