

# Downtown Development:

## A Lifestyle Approach

Located at the corner of Roberts Street & 2nd Ave. N. in Fargo, North Dakota; the Downtown Development is located next to the heart of the revival effort going on along Broadway.

One of the most attractive qualities of this site had to be its centralized location between the two downtown NDSU campuses. By being located in the heart of the city the site offered many opportunities to bring in features missing from the current downtown scene.

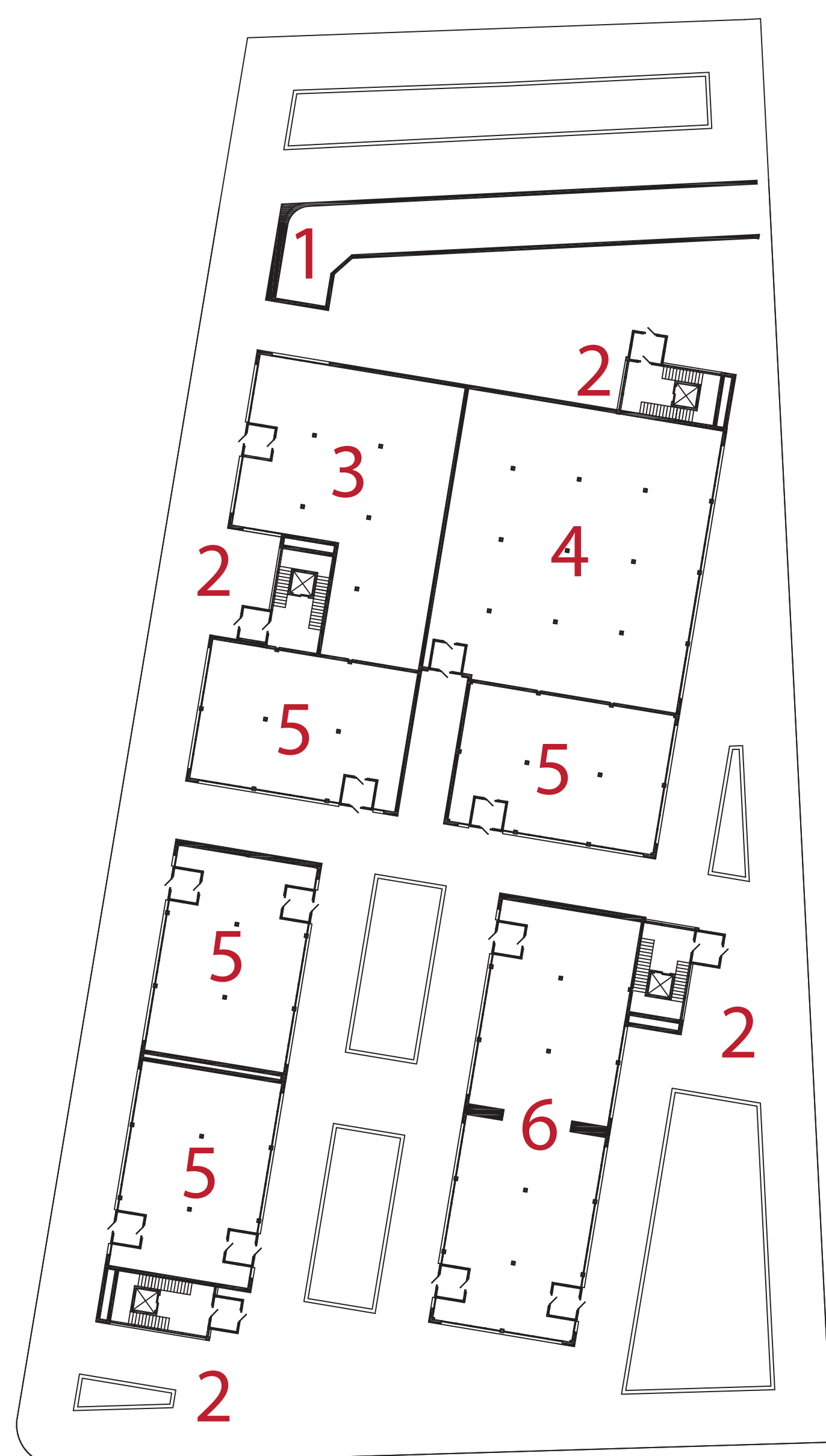
The site offered a new plot shape then the long and linear ones of the current Fargo landscape. This unique site really helped to shape the building and its structure.



Northwest Corner Perspective

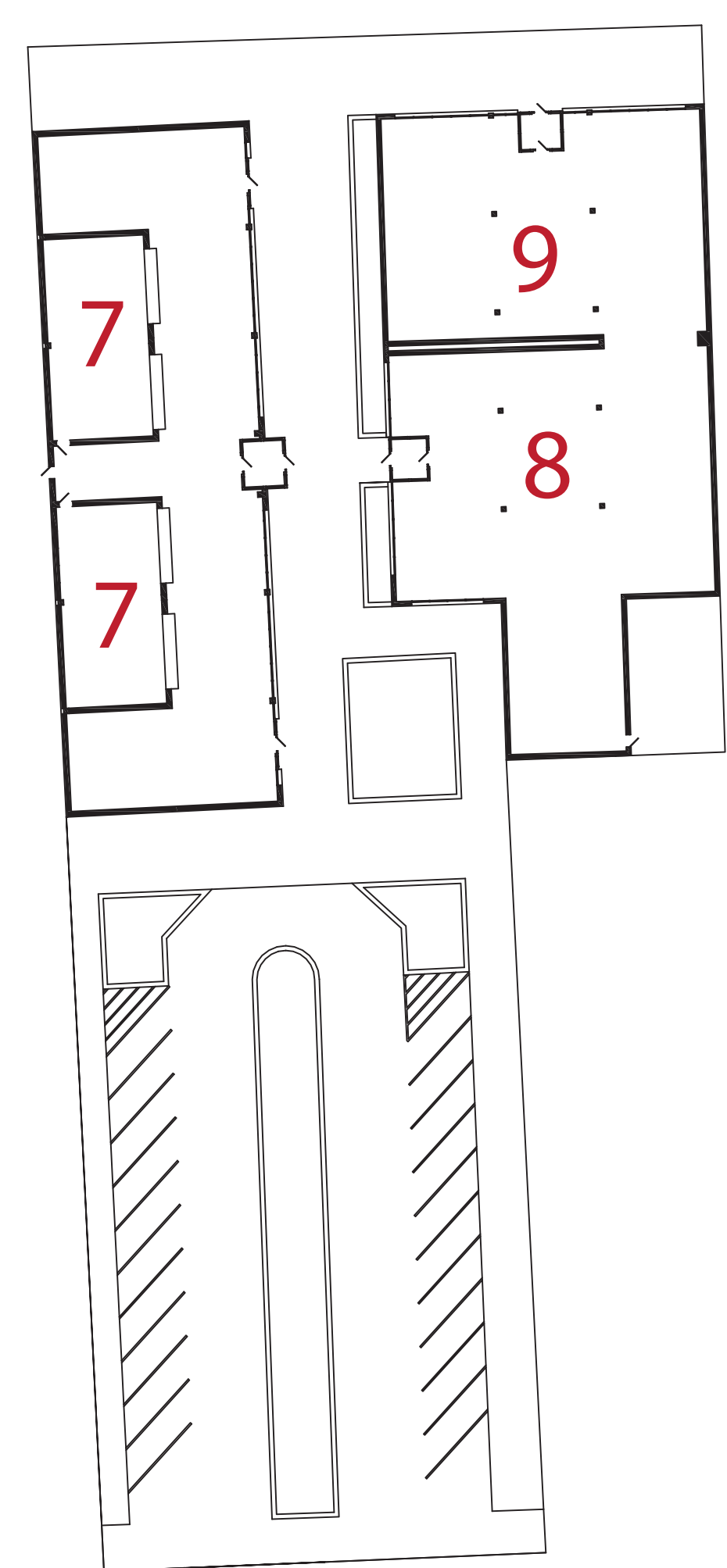


Isometric Rendering



Ground Floor Plan  
Scale: 1/32" = 1'-0"

- 1 Parking Entrance
- 2 Vertical Access
- 3 Daycare
- 4 Fitness Center
- 5 Various Retail
- 6 Supermarket
- 7 Food Court
- 8 Restaurant
- 9 Bar



Apartment Floor Plan  
Scale: 1/32" = 1'-0"

- 1 1 Bedroom Apartment
- 2 2 Bedroom Apartment
- 3 1 Bedroom Condo
- 4 2 Bedroom Condo
- 5 3 Bedroom Condo
- 6 Vertical Access

Courtyard Perspective

Balcony Perspective



Travis Michael Wilke

Professor: Regin Schwaen,  
Architecture 772 Design Thesis, Spring 2010  
Department of Architecture & Landscape Architecture  
North Dakota State University

Software Used: SketchUp, Maxwell, AutoCAD, 3ds Max



