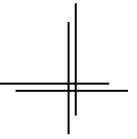


Ashland
Great Lakes & Industrial Mining Pier & Shipping Exhibits

Problem Statement

How does the configuration and organization of elements in a space influence the engagements of its participants?

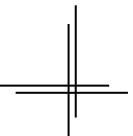


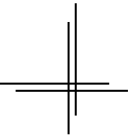
Theoretical Premise/Unifying Idea

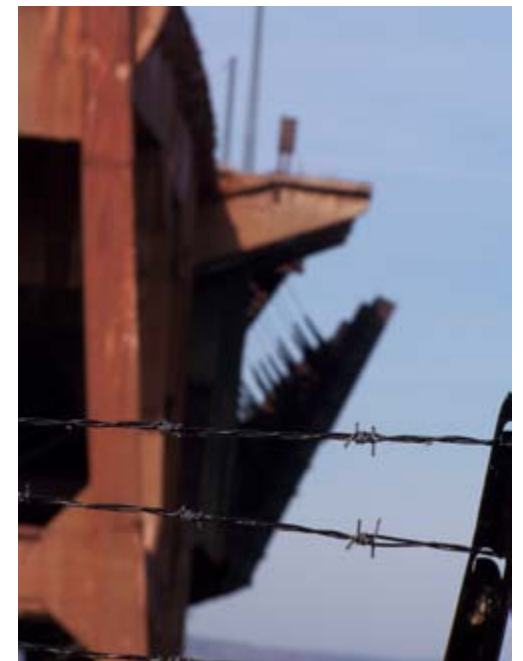
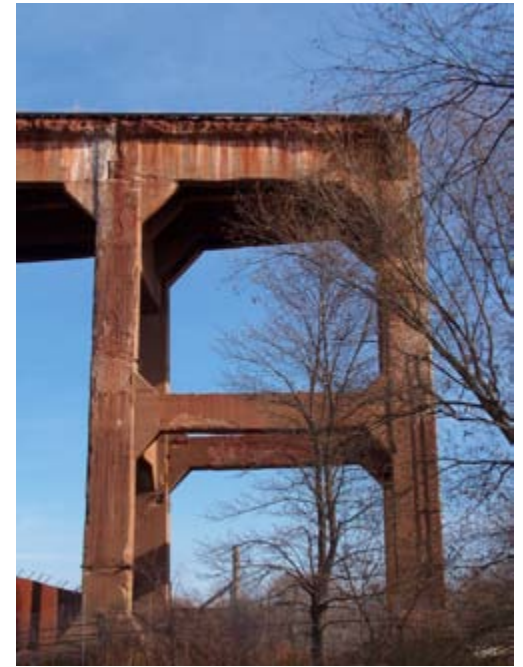
Design has a significant influence on one's actions. By using elements both designed and in nature we can engage and evoke responses in a foreseen manner.

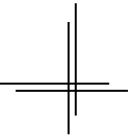
Justification

Instead of relying solely on the usage of signage and advice from others to navigate and perceive architecture, the use of visual cues, created from natural and built elements, will influence the actions and engagement of each visitor.











City of Ashland



City of Ashland

....Past



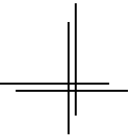
City of Ashland

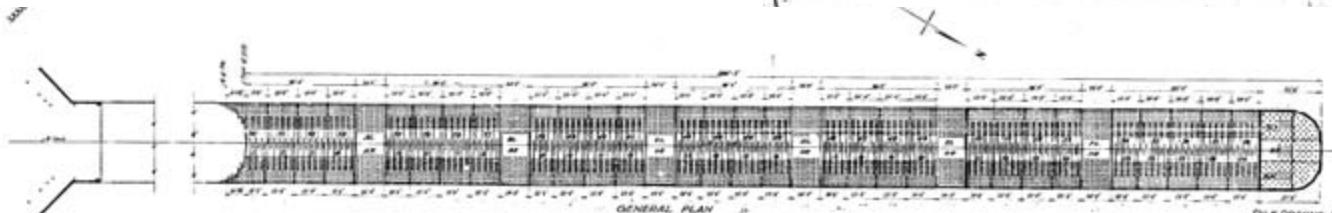
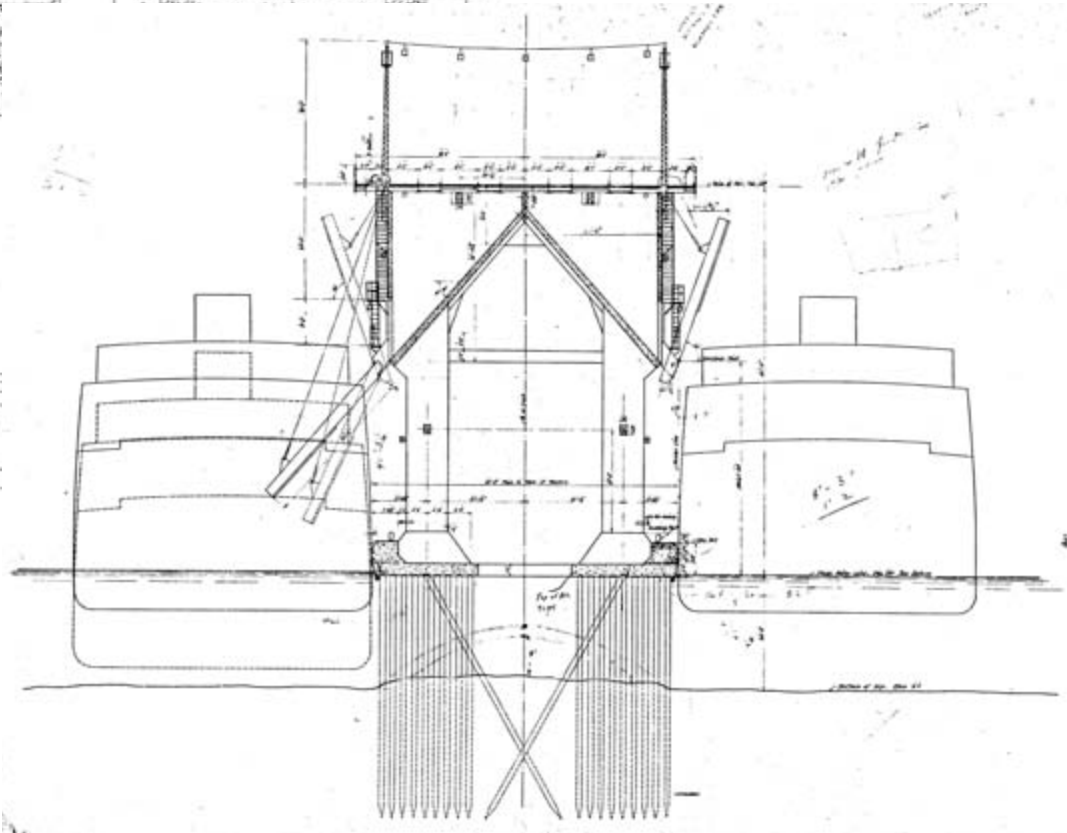
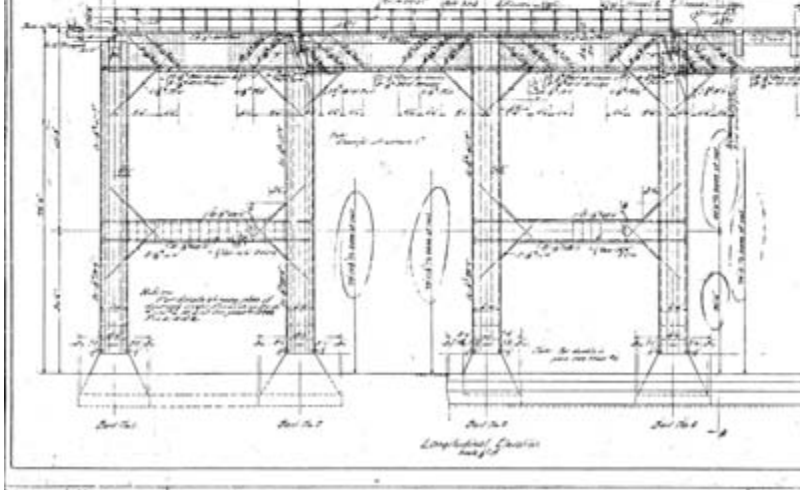
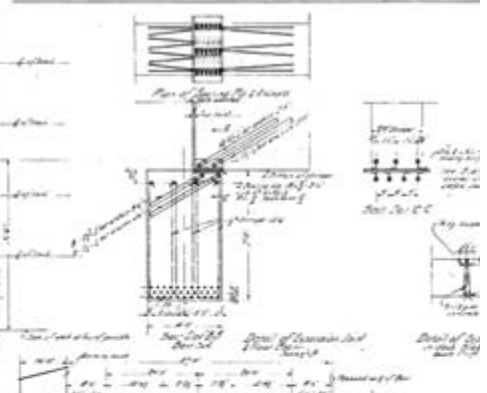
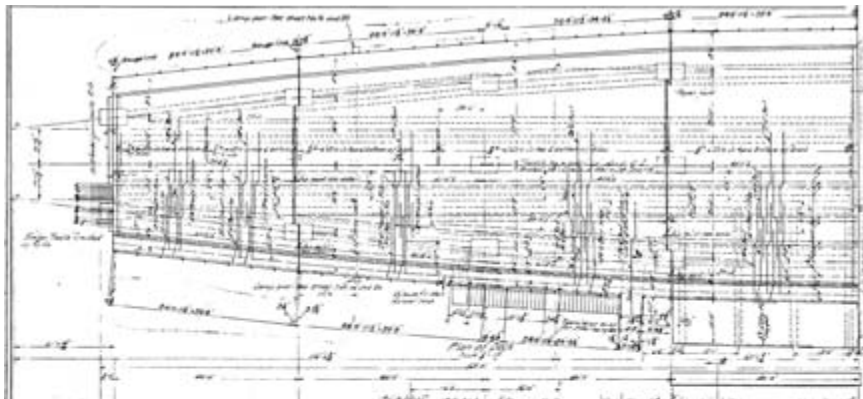


....Present



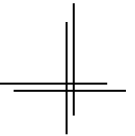
....Future

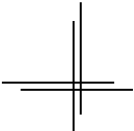
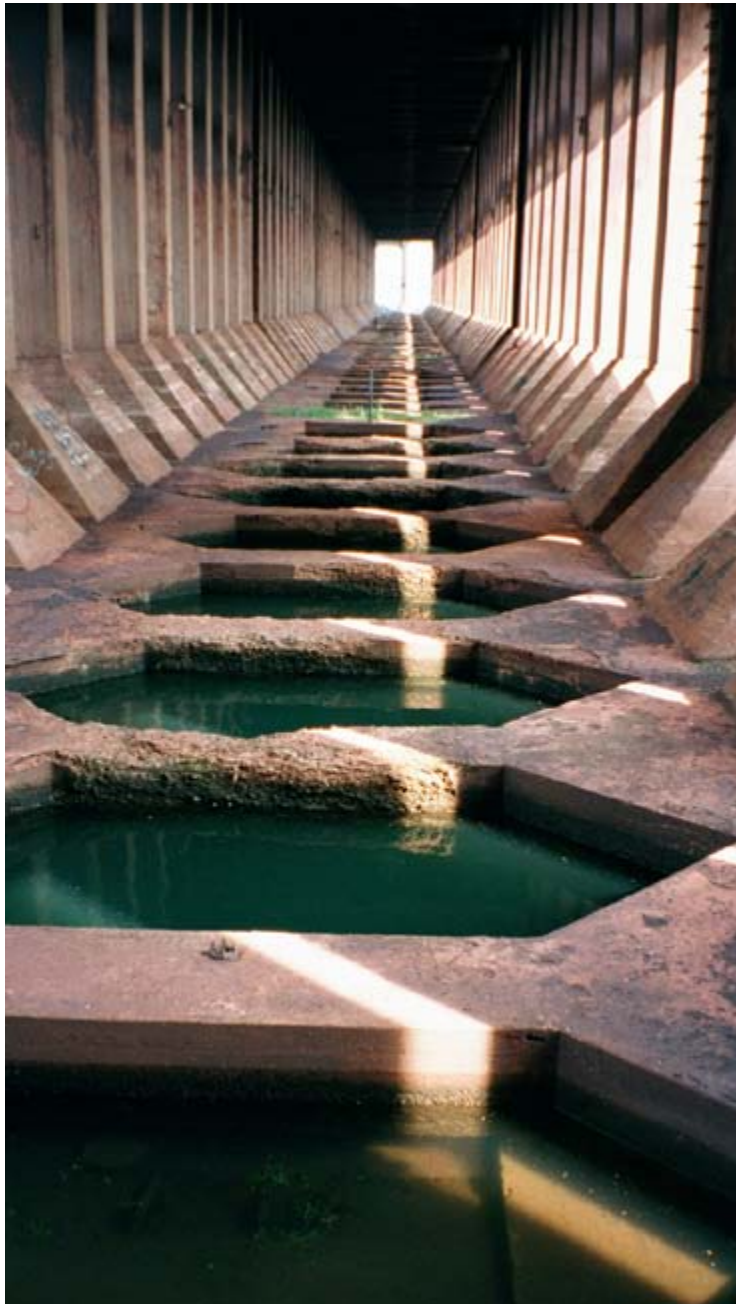


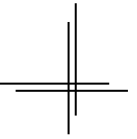


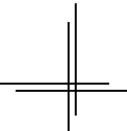
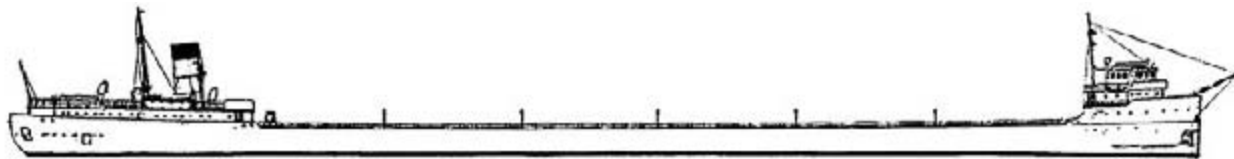
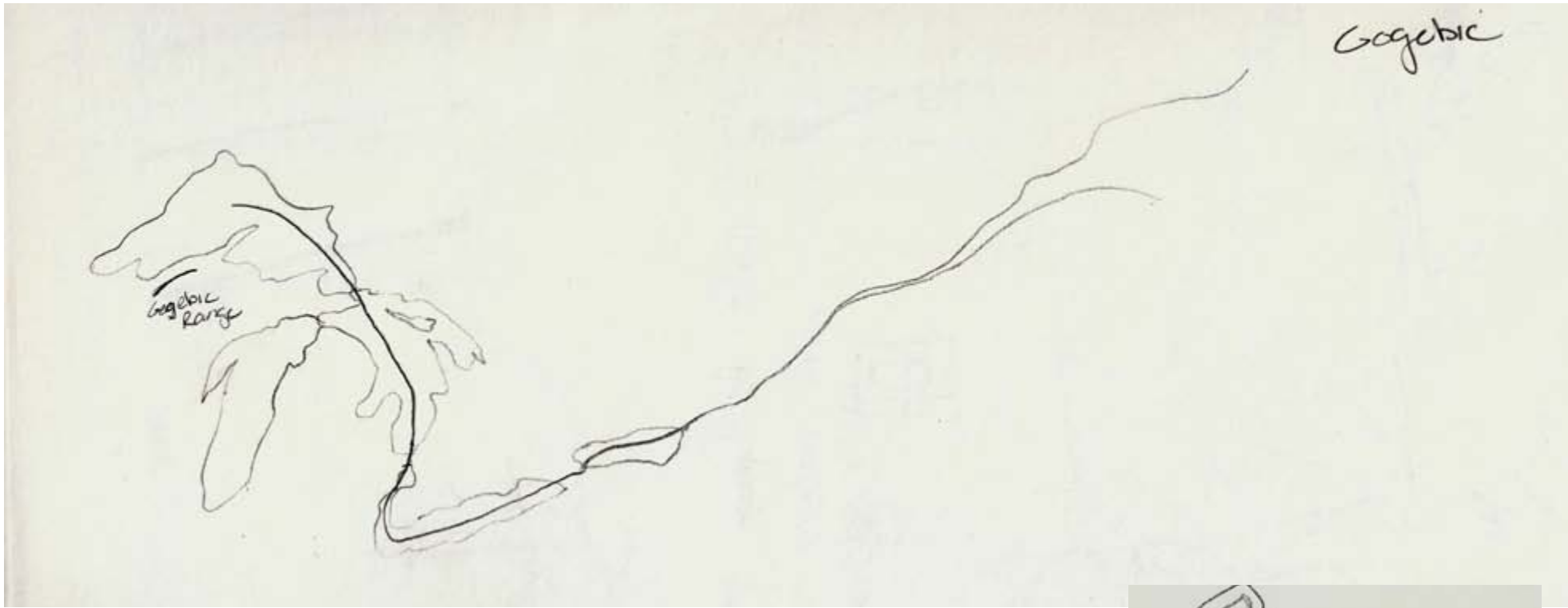
FILE DRYING DIAGRAM
EXTENSION TO ADHANG DRY DOCK

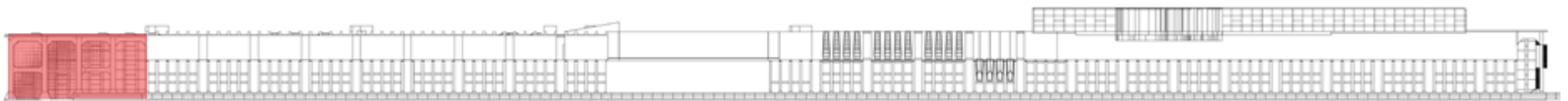
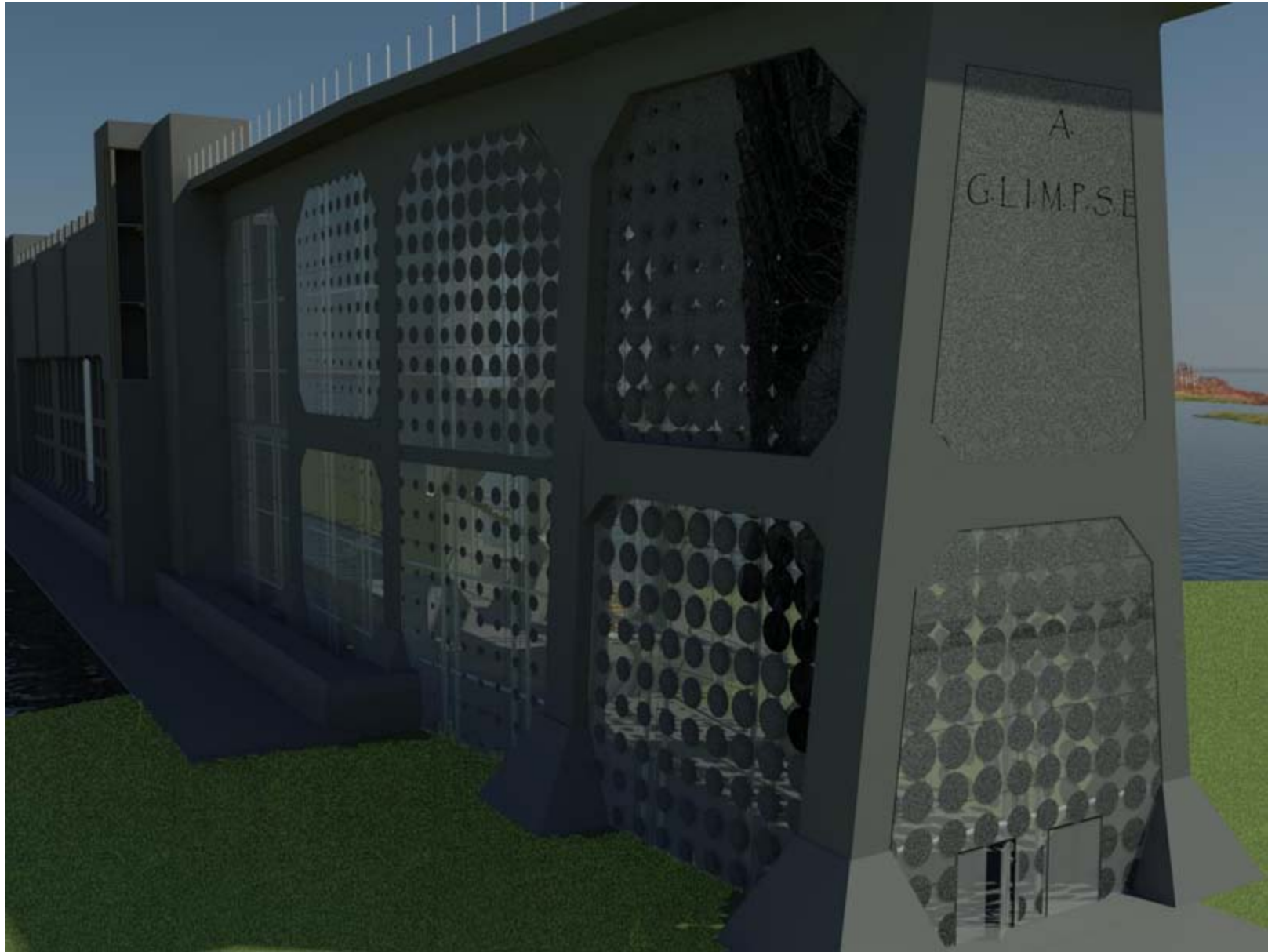


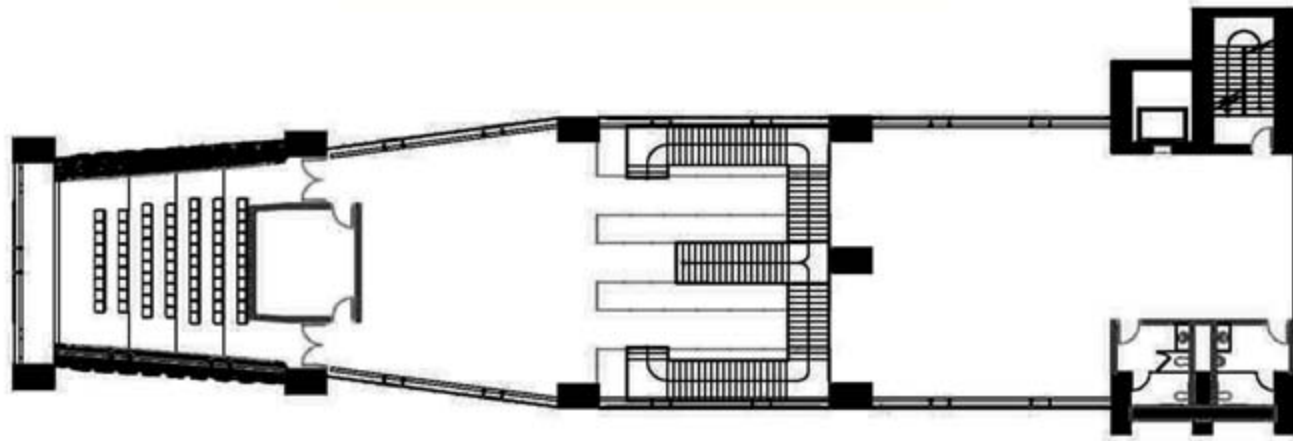




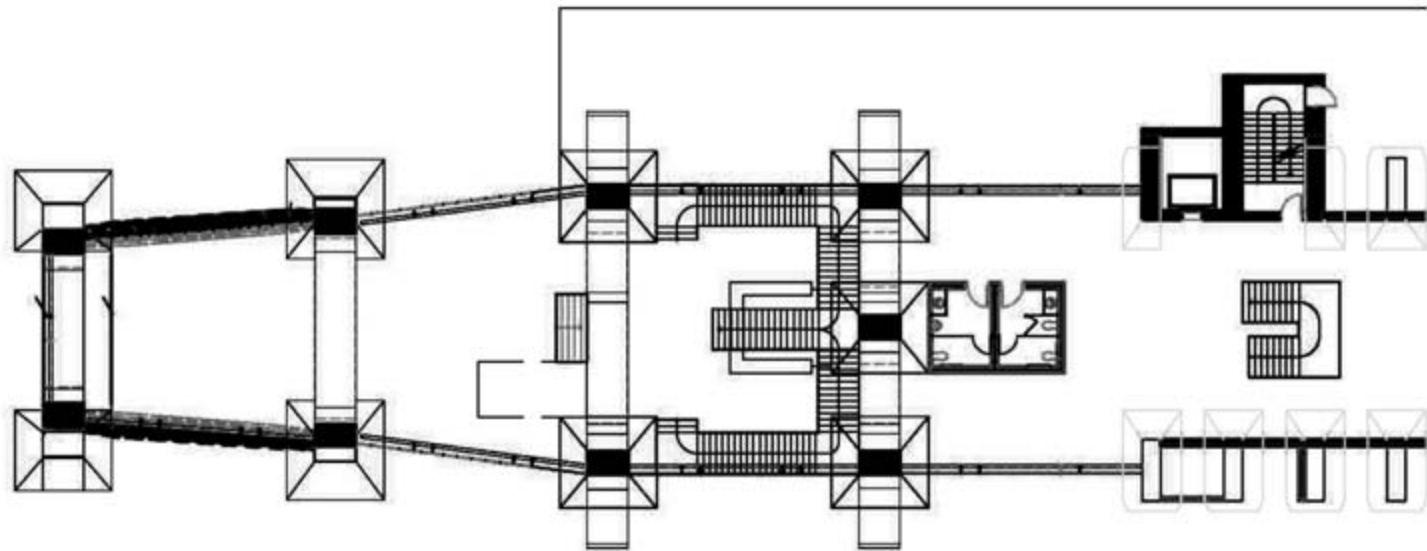




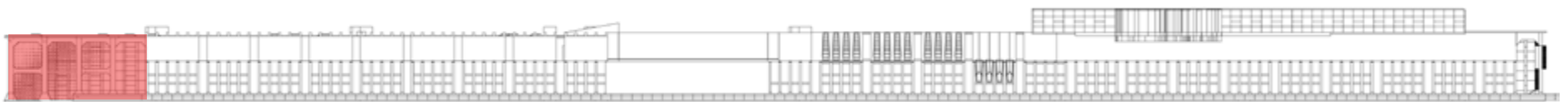


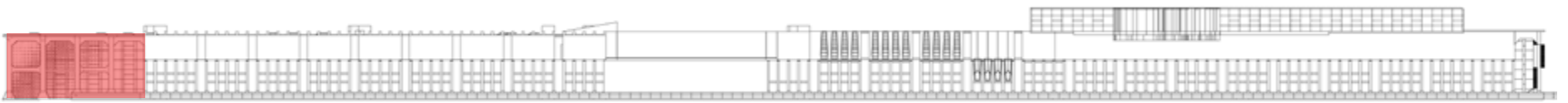
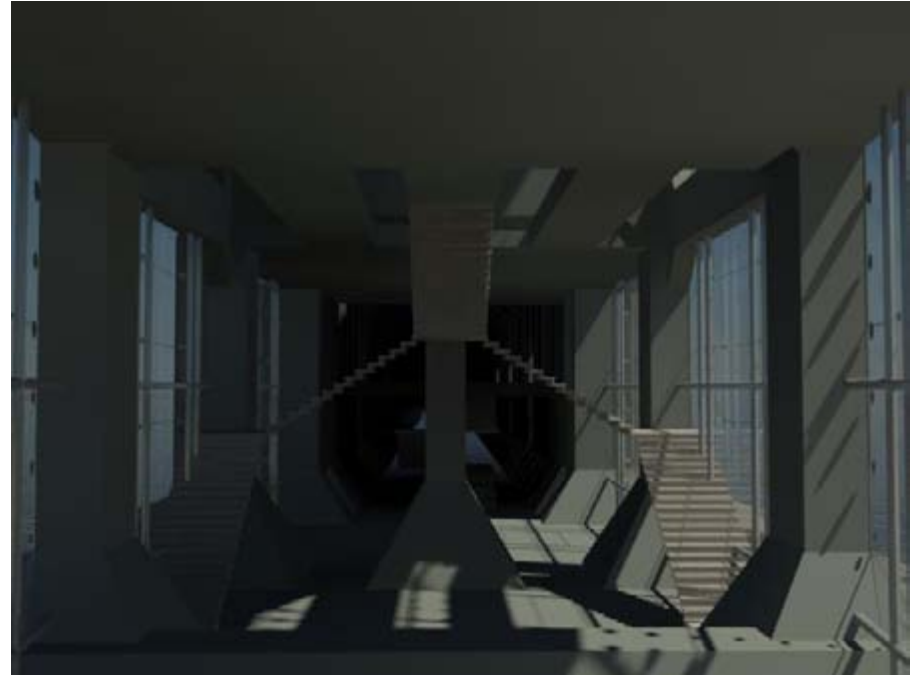
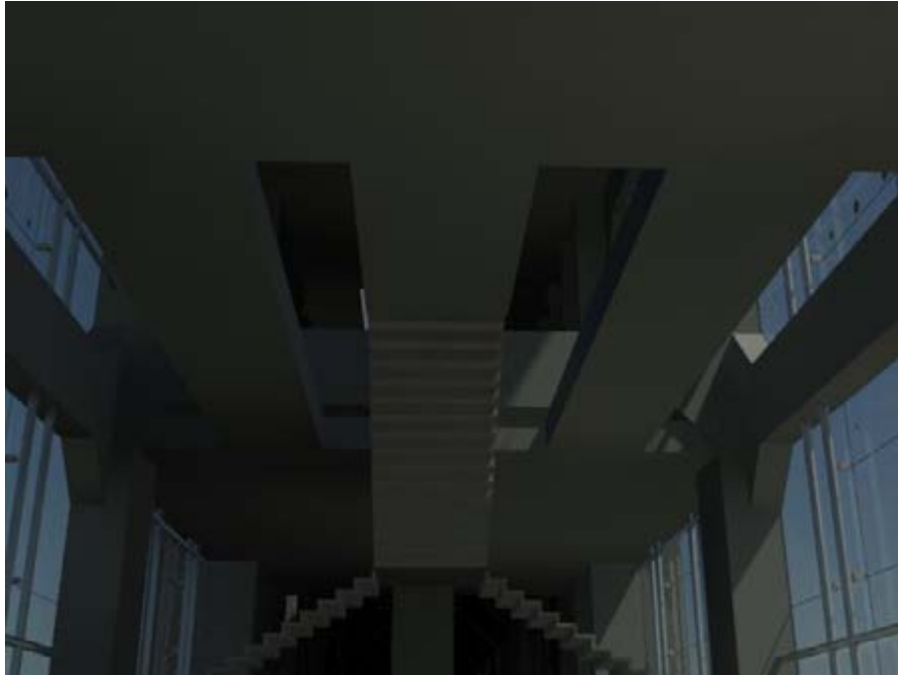


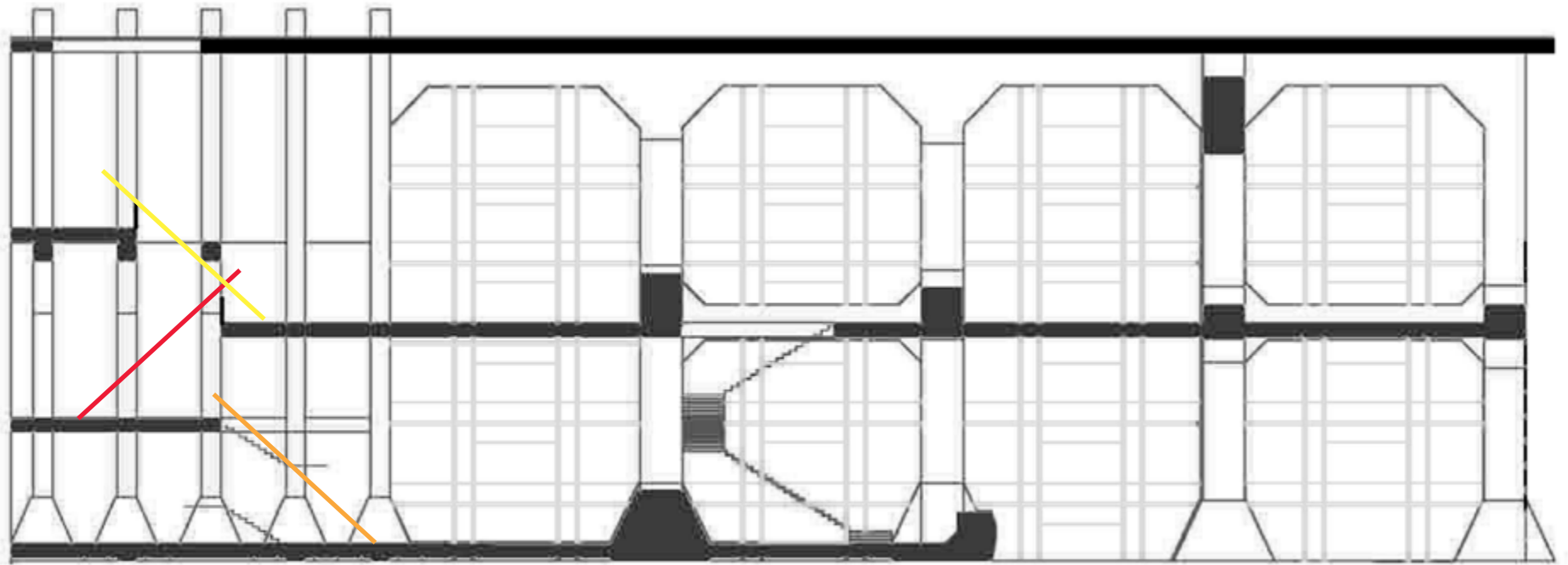
Level Two: Museum Theater & Gift Shop



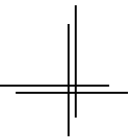
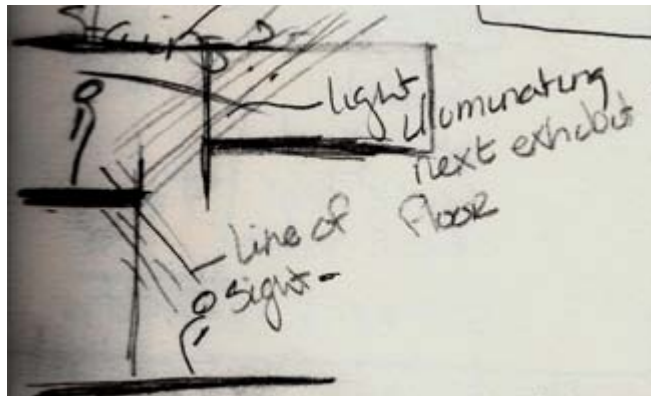
Level One: Lobby

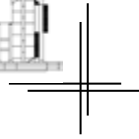
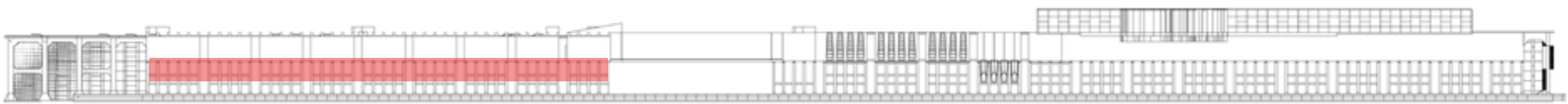


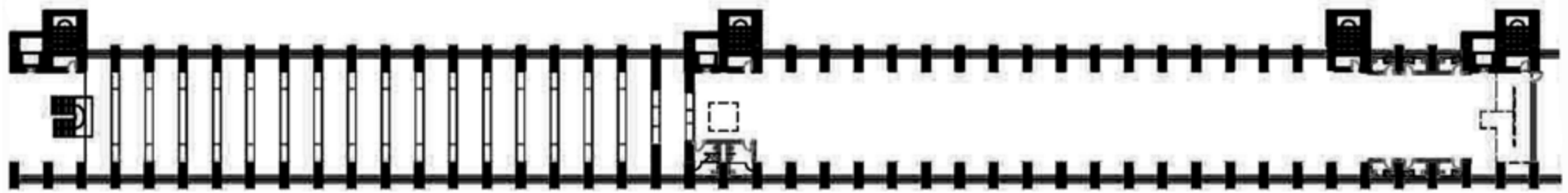




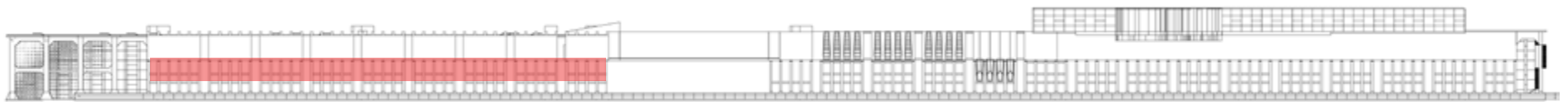
Lobby Section

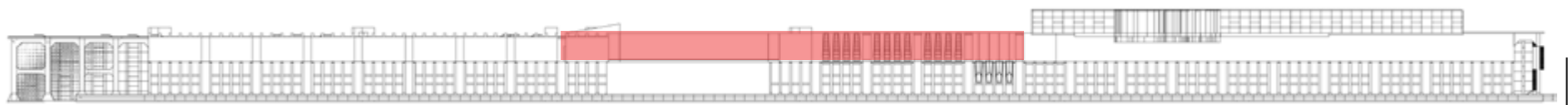
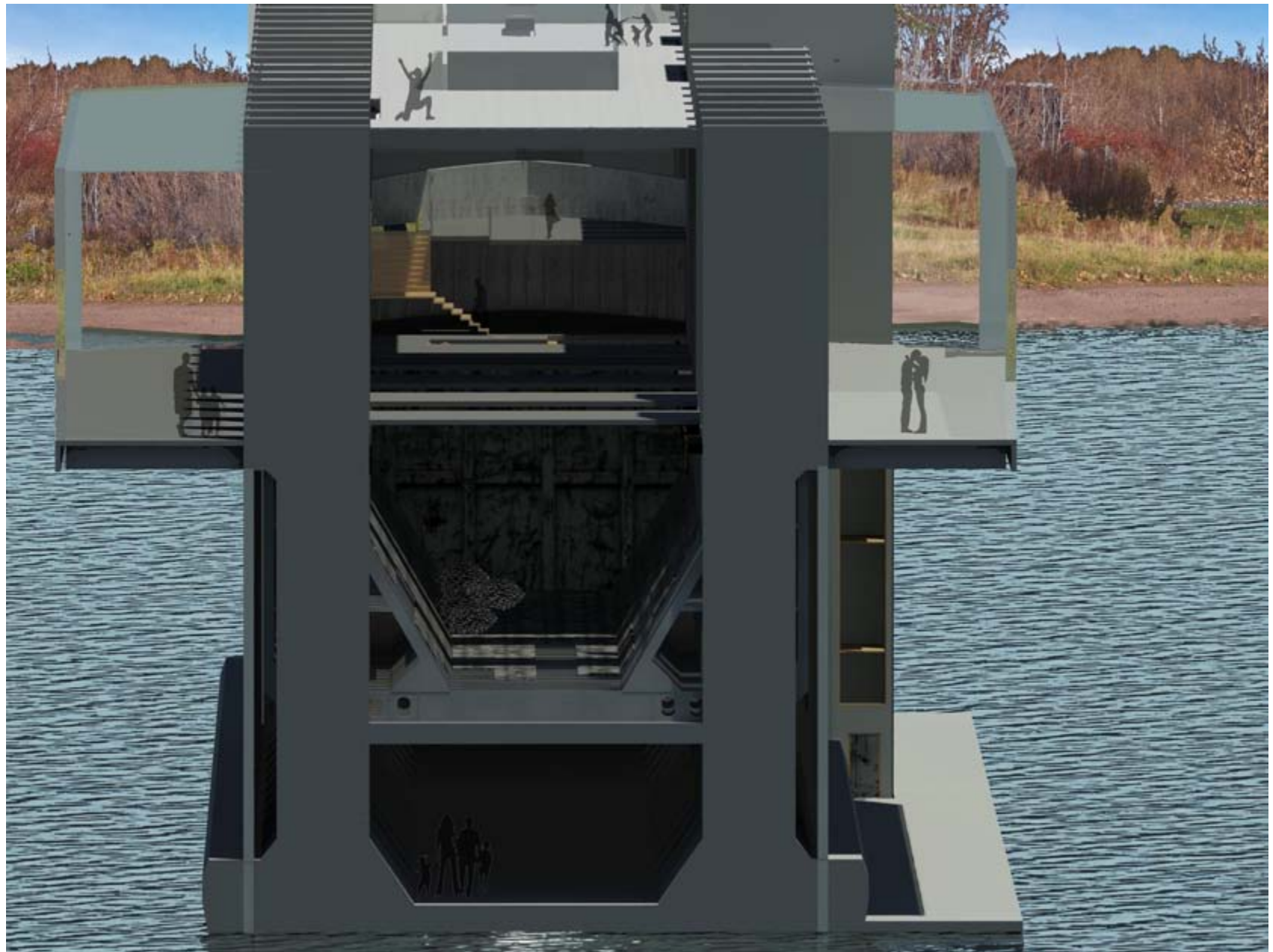


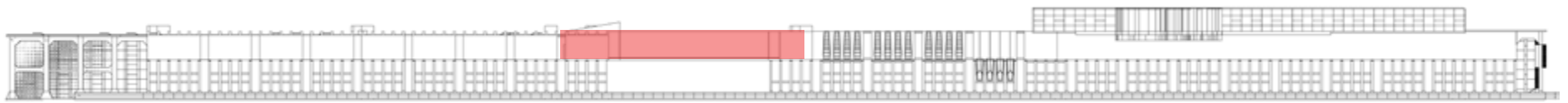


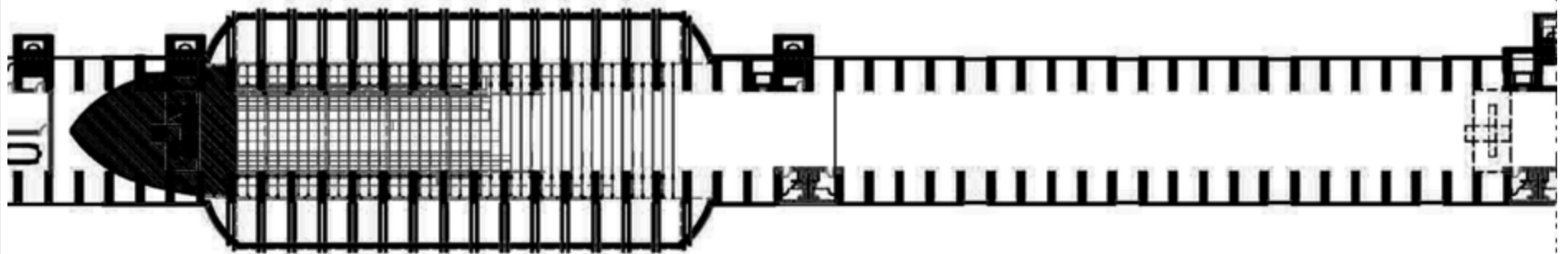


Level Two: Mining Exhibit

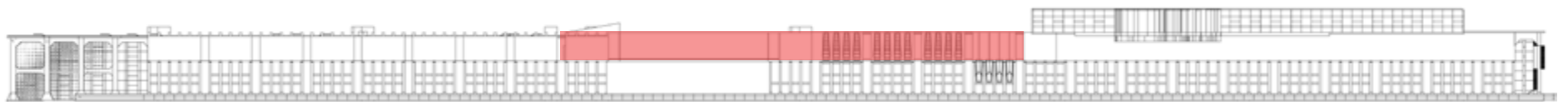


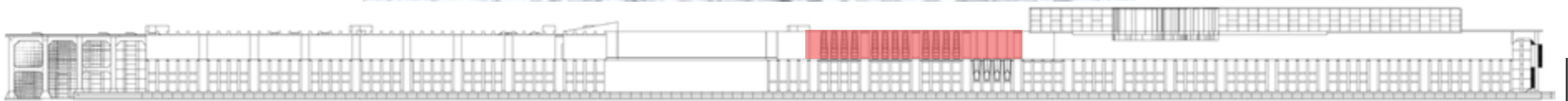
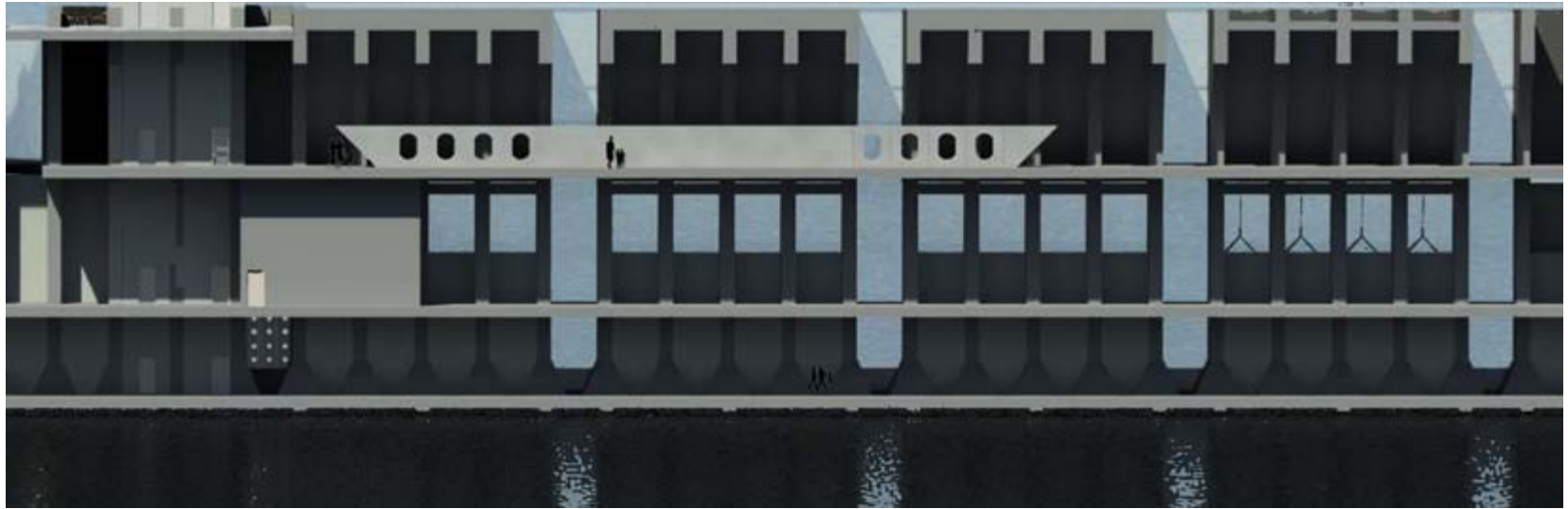


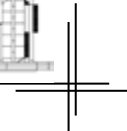
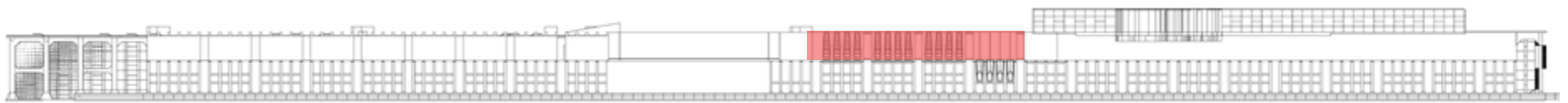
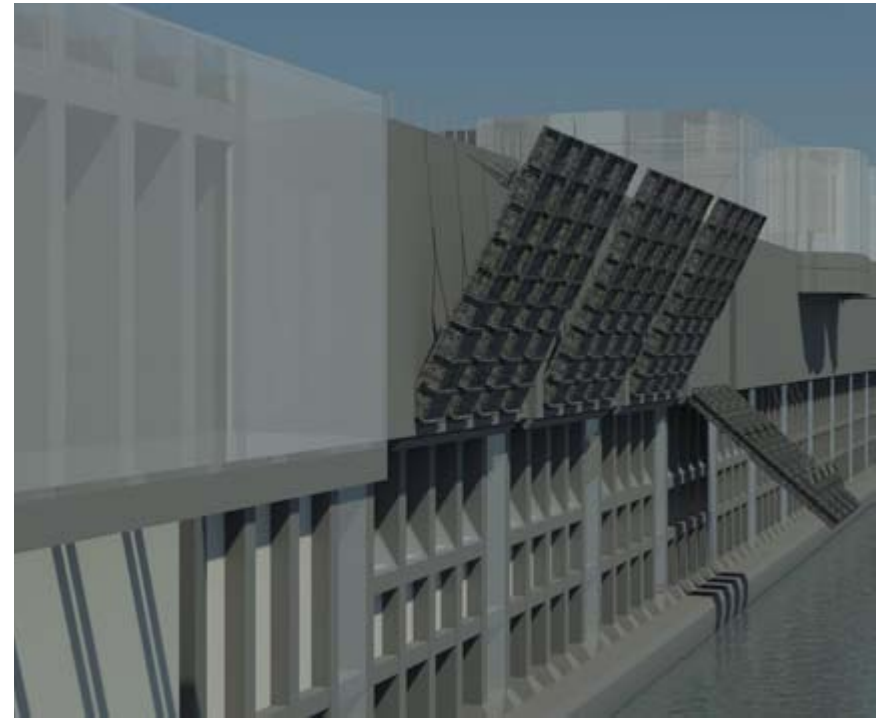
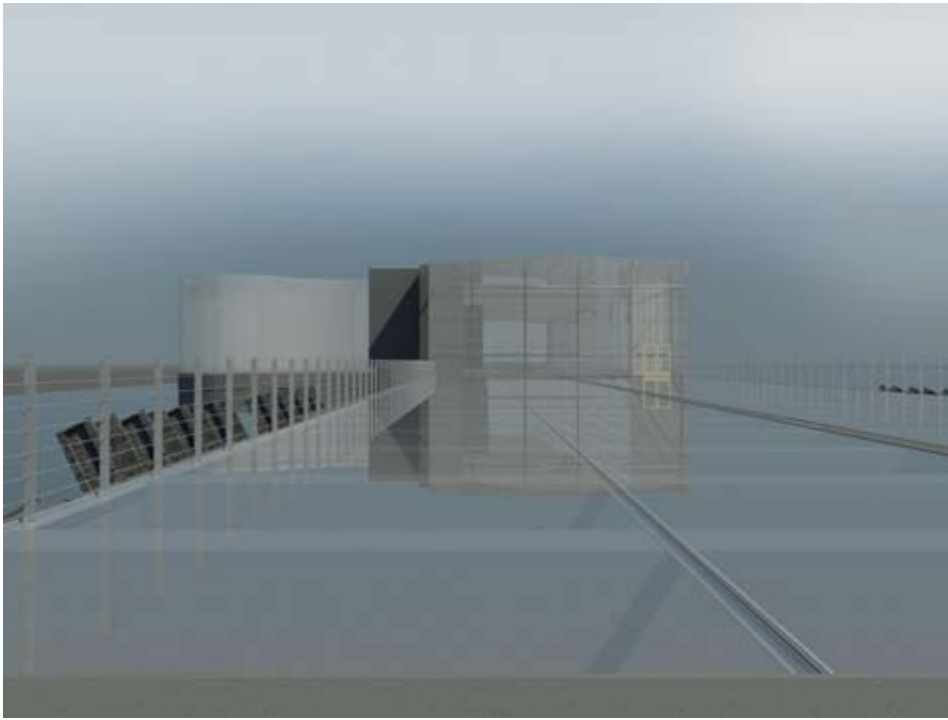


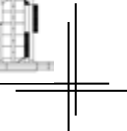
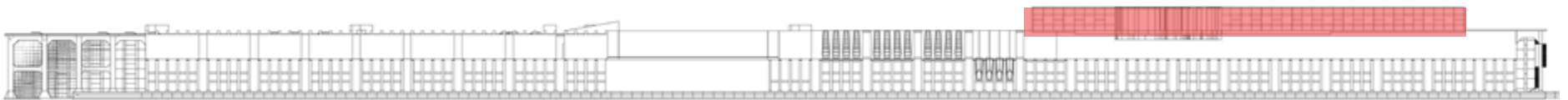
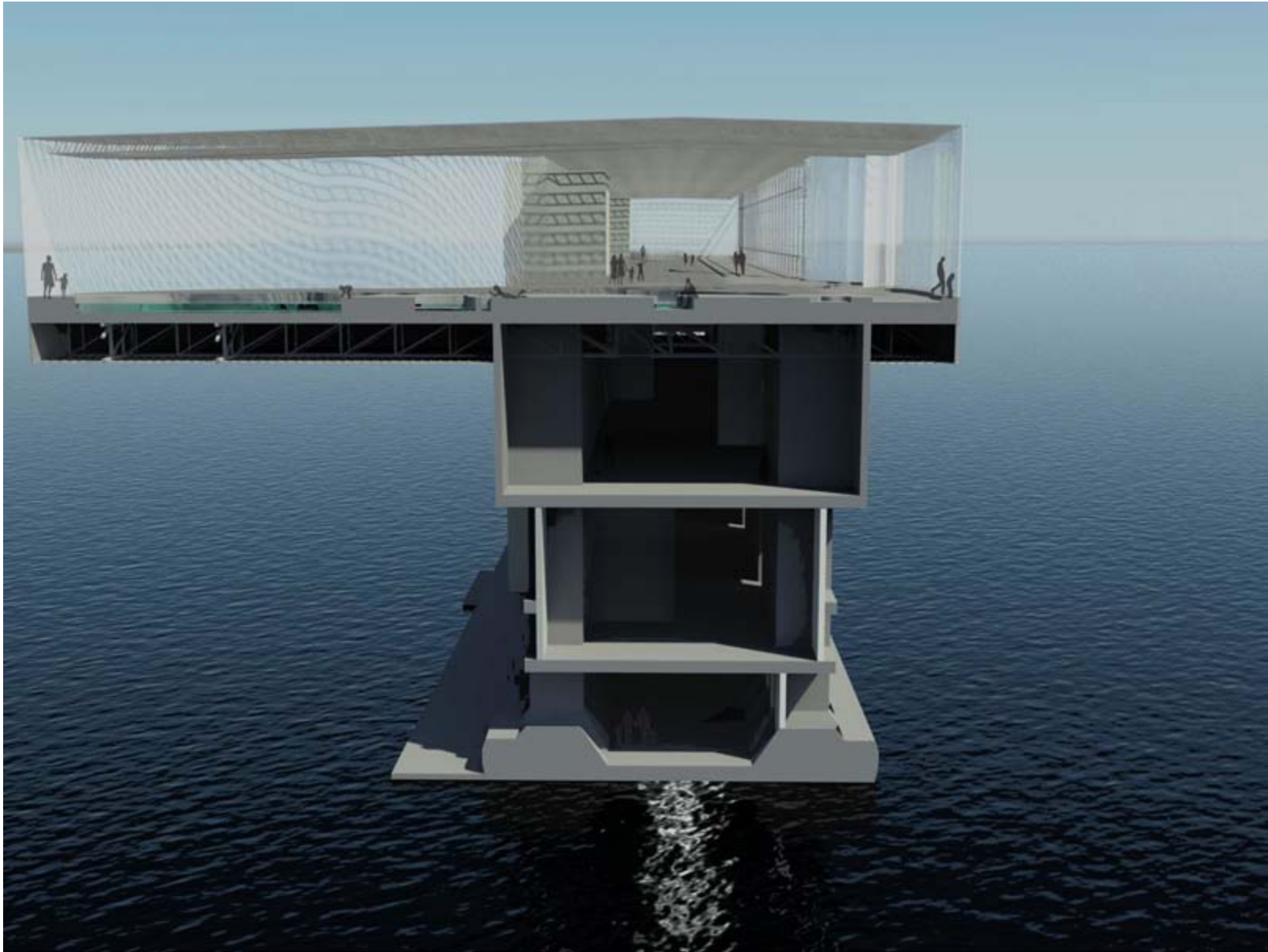


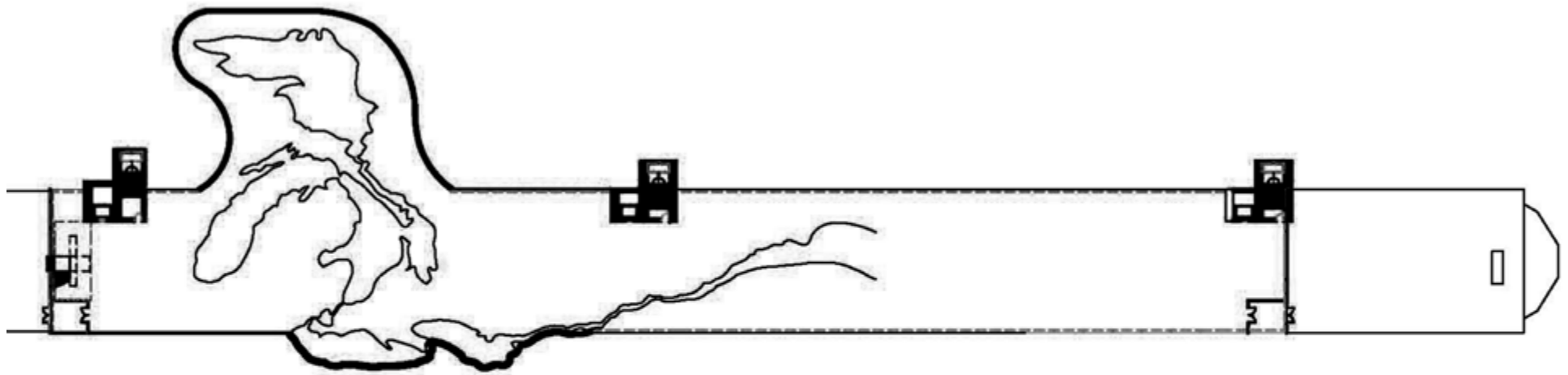
Level Three: Shipping Exhibit



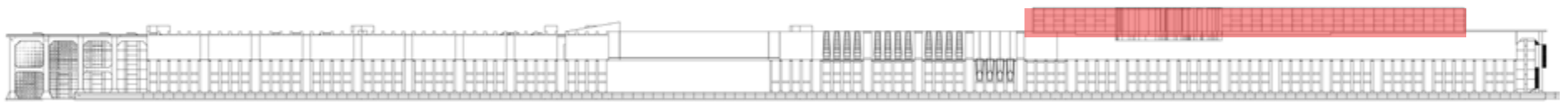


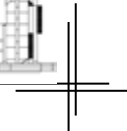
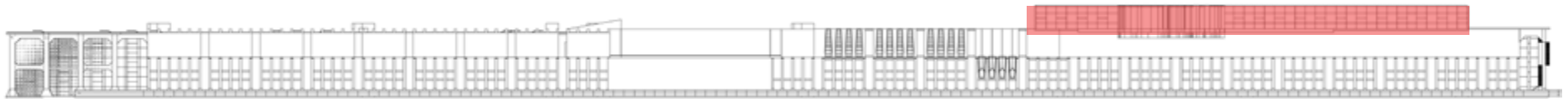


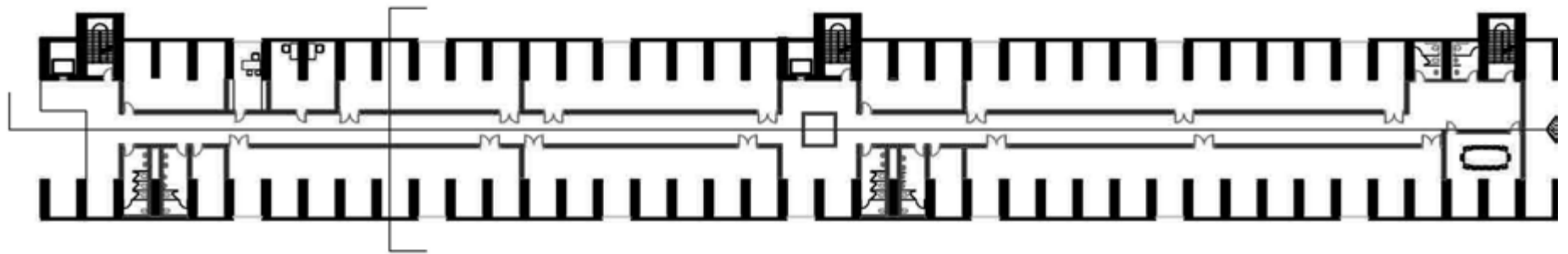




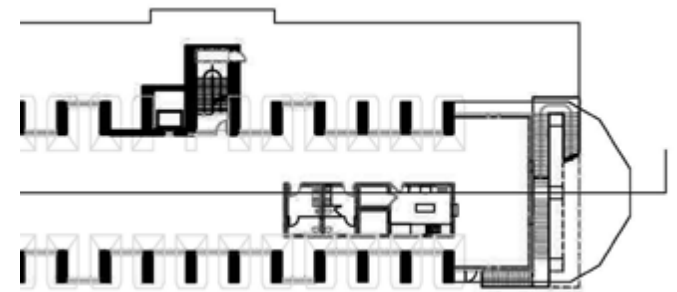
Level Four: Great Lake Exhibit







Level Three: Museum Offices, Lease Space



Level One: Kitchen/Cafe

